

**CIHM
Microfiche
Series
(Monographs)**

**ICMH
Collection de
microfiches
(monographies)**



Canadian Institute for Historical Microreproductions / Institut canadien de microreproductions historiques

© 1995

Technical and Bibliographic Notes / Notes technique et bibliographiques

The Institute has attempted to obtain the best original copy available for filming. Features of this copy which may be bibliographically unique, which may alter any of the images in the reproduction, or which may significantly change the usual method of filming are checked below.

L'Institut a microfilmé le meilleur exemplaire qu'il lui a été possible de se procurer. Les détails de cet exemplaire qui sont peut-être uniques du point de vue bibliographique, qui peuvent modifier une image reproduite, ou qui peuvent exiger une modifications dans la méthode normale de filmage sont indiqués ci-dessous.

- | | |
|---------------------------------------------------------------------------------------------------------------------------------------------------------------------------------------------------------------------------------------------------------------------------------------------------------------------------------------------------------------------------------------------------------------------------------------------------------------------------------------------------------------------------------------------------------------------------------------------------------------------------------------------------------------------------------------------------------------------------------------------------------------------------------------------------------------------------------------------------------------------------------------------------------------------------------------------------------------------------------------------------------------------------------------------------------------------------------------------------------------------------------------------------------------------------------------------------------------------------------------------------------------------------------------------------------------------------------------------------------------------------------------------------------------------------------------------------------------------------------------------------------------------------------------------------------------------------------------|----------------------------------------------------------------------------------------------------------------------------------------------------------------------------------------------------------------------------------------------------------------------------------------------------------------------------------------------------------------------------------------------------------------------------------------------------------------------------------------------------------------------------------------------------------------------------------------------------------------------------------------------------------------------------------------------------------------------------------------------------------------------------------------------------------------------------------------------------------------------------------------------------------------------------------------------------------------------------------------------------------------------------------------------------------------------------------------------------------------------------------------------------------------------------------------------------------------------------------------------------------------------------------------------------------------------------------------------------------------------------------------------------|
| <ul style="list-style-type: none"> <input checked="" type="checkbox"/> Coloured covers / Couverture de couleur <input type="checkbox"/> Covers damaged / Couverture endommagée <input type="checkbox"/> Covers restored and/or laminated / Couverture restaurée et/ou pelliculée <input type="checkbox"/> Cover title missing / Le titre de couverture manque <input type="checkbox"/> Coloured maps / Cartes géographiques en couleur <input checked="" type="checkbox"/> Coloured ink (i.e. other than blue or black) / Encre de couleur (i.e. autre que bleue ou noire) <input checked="" type="checkbox"/> Coloured plates and/or illustrations / Planches et/ou illustrations en couleur <input type="checkbox"/> Bound with other material / Relié avec d'autres documents <input type="checkbox"/> Only edition available / Seule édition disponible <input type="checkbox"/> Tight binding may cause shadows or distortion along interior margin / La reliure serrée peut causer de l'ombre ou de la distorsion le long de la marge intérieure. <input type="checkbox"/> Blank leaves added during restorations may appear within the text. Whenever possible, these have been omitted from filming / Il se peut que certaines pages blanches ajoutées lors d'une restauration apparaissent dans le texte, mais, lorsque cela était possible, ces pages n'ont pas été filmées. <input type="checkbox"/> Additional comments / Commentaires supplémentaires: | <ul style="list-style-type: none"> <input type="checkbox"/> Coloured pages / Pages de couleur <input type="checkbox"/> Pages damaged / Pages endommagées <input type="checkbox"/> Pages restored and/or laminated / Pages restaurées et/ou pelliculées <input checked="" type="checkbox"/> Pages discoloured, stained or foxed / Pages décolorées, tachetées ou piquées <input type="checkbox"/> Pages detached / Pages détachées <input checked="" type="checkbox"/> Showthrough / Transparence <input type="checkbox"/> Quality of print varies / Qualité inégale de l'impression <input type="checkbox"/> Includes supplementary material / Comprend du matériel supplémentaire <input type="checkbox"/> Pages wholly or partially obscured by errata slips, tissues, etc., have been refilmed to ensure the best possible image / Les pages totalement ou partiellement obscurcies par un feuillet d'errata, une pelure, etc., ont été filmées à nouveau de façon à obtenir la meilleure image possible. <input type="checkbox"/> Opposing pages with varying colouration or discolourations are filmed twice to ensure the best possible image / Les pages s'opposant ayant des colorations variables ou des décolorations sont filmées deux fois afin d'obtenir la meilleure image possible. |
|---------------------------------------------------------------------------------------------------------------------------------------------------------------------------------------------------------------------------------------------------------------------------------------------------------------------------------------------------------------------------------------------------------------------------------------------------------------------------------------------------------------------------------------------------------------------------------------------------------------------------------------------------------------------------------------------------------------------------------------------------------------------------------------------------------------------------------------------------------------------------------------------------------------------------------------------------------------------------------------------------------------------------------------------------------------------------------------------------------------------------------------------------------------------------------------------------------------------------------------------------------------------------------------------------------------------------------------------------------------------------------------------------------------------------------------------------------------------------------------------------------------------------------------------------------------------------------------|----------------------------------------------------------------------------------------------------------------------------------------------------------------------------------------------------------------------------------------------------------------------------------------------------------------------------------------------------------------------------------------------------------------------------------------------------------------------------------------------------------------------------------------------------------------------------------------------------------------------------------------------------------------------------------------------------------------------------------------------------------------------------------------------------------------------------------------------------------------------------------------------------------------------------------------------------------------------------------------------------------------------------------------------------------------------------------------------------------------------------------------------------------------------------------------------------------------------------------------------------------------------------------------------------------------------------------------------------------------------------------------------------|

This item is filmed at the reduction ratio checked below /
Ce document est filmé au taux de réduction indiqué ci-dessous.

	10X		14X		18X		22X		26X		30X	
	12X		16X		20X		24X		28X		32X	

(Note: The 24X box in the second row contains a checkmark.)

The copy filmed here has been reproduced thanks to the generosity of:

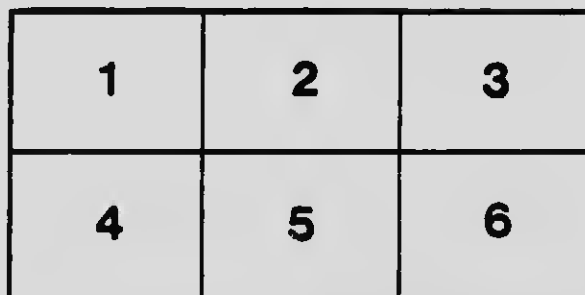
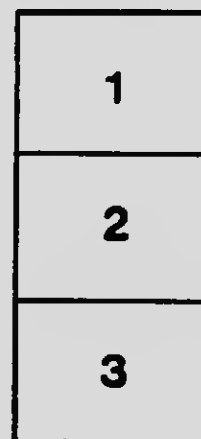
National Library of Canada

The images appearing here are the best quality possible considering the condition and legibility of the original copy and in keeping with the filming contract specifications.

Original copies in printed paper covers are filmed beginning with the front cover and ending on the last page with a printed or illustrated impression, or the back cover when appropriate. All other original copies are filmed beginning on the first page with a printed or illustrated impression, and ending on the last page with a printed or illustrated impression.

The last recorded frame on each microfiche sheet contains the symbol \rightarrow (meaning "CONTINUED"), or the symbol ∇ (meaning "END"), whichever applies.

Maps, plates, charts, etc., may be filmed at different reduction ratios. Those too large to be entirely included in one exposure are filmed beginning in the upper left hand corner, left to right and top to bottom, as many frames as required. The following diagrams illustrate the method:



L'exemplaire filmé fut reproduit grâce à la générosité de:

Bibliothèque nationale du Canada

Les images suivantes ont été reproduites avec le plus grand soin, compte tenu de la condition et de la netteté de l'exemplaire filmé, et en conformité avec les conditions du contrat de filmage.

Les exemplaires originaux dont la couverture en papier est imprimée sont filmés en commençant par le premier plat et en terminant soit par la dernière page qui comporte une empreinte d'impression ou d'illustration, soit par le second plat, selon le cas. Tous les autres exemplaires originaux sont filmés en commençant par la première page qui comporte une empreinte d'impression ou d'illustration et en terminant par la dernière page qui comporte une telle empreinte.

Un des symboles suivants apparaîtra sur la dernière image de chaque microfiche, selon le cas: le symbole \rightarrow signifie "À SUIVRE", le symbole ∇ signifie "FIN".

Les cartes, planches, tableaux, etc., peuvent être filmés à des taux de réduction différents. Lorsque le document est trop grand pour être reproduit en un seul cliché, il est filmé à partir de l'angle supérieur gauche, de gauche à droite, et de haut en bas, en prenant le nombre d'images nécessaire. Les diagrammes suivants illustrent la méthode.

MICROCOPY RESOLUTION TEST CHART

(ANSI and ISO TEST CHART No. 2)



4.5

3.0

3.6

4.5

5.6

7.1

9.0

11.2

14.0

17.5

22.5

28.0

36.0

45.0

56.2

70.0

88.0

110.0

138.0

175.0

225.0

288.0

360.0



APPLIED IMAGE Inc

1653 East Main Street
Rochester, New York 14609 USA
(716) 482 - 0300 - Phone
(716) 288 - 5989 - Fax

Myrliffe College



1908



Wycliffe College, looking from the West



The College from the East, showing the New Wing

WYCLIFFE COLLEGE

**Its Development and
:::: Its Opportunity**



"The Lord hath done great things for us whereof we are glad."—*Psalm 126* : 3.

"Behold I have set before thee an open door and no man can shut it."—*Rev. 3* : 8.



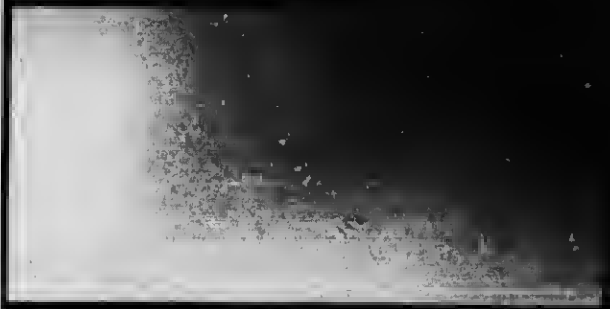
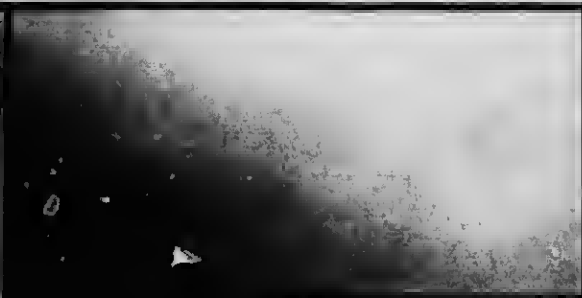
The College Chapel



The Convocation Hall

THE opening of the New Wing of Wycliffe College completes for the present a work which has had a very remarkable history during the past thirty years.

- 1877 In October, 1877, the late Principal, the Reverend Dr. Sheraton, met the first four or five students in the Infant Class Room of St. James' School house, and with the voluntary assistance of several well known Parochial Clergymen began his work, the work of the College.
- 1882 The first College Building was erected on the North side of College St. in proximity to the University of Toronto with which Institution from the first it was affiliated.
- 1885 This Building was enlarged by the erection of a Library and additional rooms for students.
- 1891 The work of the College was transferred to its new home on Hoskin Avenue where a spacious building, then supposed to answer all the purposes of the Institution, was erected.



The Library and Students' Reading Room

The New Dining Hall

1902 A Convocation Hall capable of seating six hundred people and in keeping with the Building was added. The addition also included a new and larger Library and a Residence for the housekeeper and servants.

1908 The evening of February 21st saw the completion of this Building, which, as it now stands, rounds off and completes the whole structure and gives suitable accommodation for a large work among students.

FOR three years past the Building had been entirely inadequate to the rapidly increasing number of students who desire to be trained for the Christian Ministry at Wycliffe.

In the autumn of 1906 the Council decided to erect the addition and in March of last year the work was commenced under the direction of Messrs. Gordon & Helliwell, Architects. R. Milliechamp, Esq., represented the College Council in the work.

The Ground Floor of the New Wing is taken up with a kitchen, store-rooms and servants' sitting room. The Main Floor consists of a spacious and well appointed Dining Hall, capable of seating about one hundred students, a serving pantry,



The First Building on
College Street

The Schoolhouse of St. James' Cathedral, Toronto, and the Room in which
the work of Wycliffe College was Commenced

Principal's office and a room for the use of the Teaching Staff. The Dining Hall is a specially pleasing piece of work and is in handsome collegiate style of architecture and finish. The interior of this room, including the leaded glass work in the windows, is the gift of Mr. R. A. A. Jones, of Guilford, England, a Canadian and a warm friend and supporter of the College. Two Coats of Arms in the North window, one of the Dominion of Canada and the other of Wycliffe College are also gifts of this kind and generous friend.

The Two Upper Flats of the New Wing supply the College with twenty-six additional rooms for students and provide for a total number of seventy-two students, each man having a room to himself.

The accommodation in the Basement of the Old Building, set free by moving the dining room and kitchen into the New Wing, has been utilized for a Laundry and small Gymnasium, with Shower Bath attached.

The Furnishings necessary for the New Building have all been generously donated by friends of the College. The funds needed for this work were very kindly collected by a Committee of Ladies representing a number of the parishes in the City of Toronto.



Mr. Stapleton Caldecott, the late Treasurer of Wycliffe College

The Formal Opening

Friday, February the 21st, was a red letter day to be thankfully remembered in the history of the College. Nearly one thousand persons were present on the occasion of the Opening of the New Wing.

The evening began with a Meeting in the Convocation Hall, which was opened by the singing of the Doxology and the offering of special thanksgiving by the Right Reverend Dr. Reeve, Assistant Bishop of Toronto.

It was fitting that on this historic occasion the name of the late Principal Sheraton should be prominently in the minds of the friends of the College. In his honoured memory were presented by the students three beautifully carved oak Convocation Chairs, and by the Graduates a very finely executed oil painting of Dr. Sheraton. The presentation of the former was made by the Rev. L. E. Davis, M.A., one of the present students, and the portrait was unveiled by the Rev. L. E. Skey, M.A., Rector of St. Anne's Church, Toronto, as representing his fellow Graduates. These appropriate gifts were accepted on behalf of the College by the President, Dr. N. W. Hoyles, K.C., and the Rev. Principal O'Meara.



Chief Justice Draper

Sir Daniel Wilson

Col. Sir Casimir Gzowski, A.D.C.

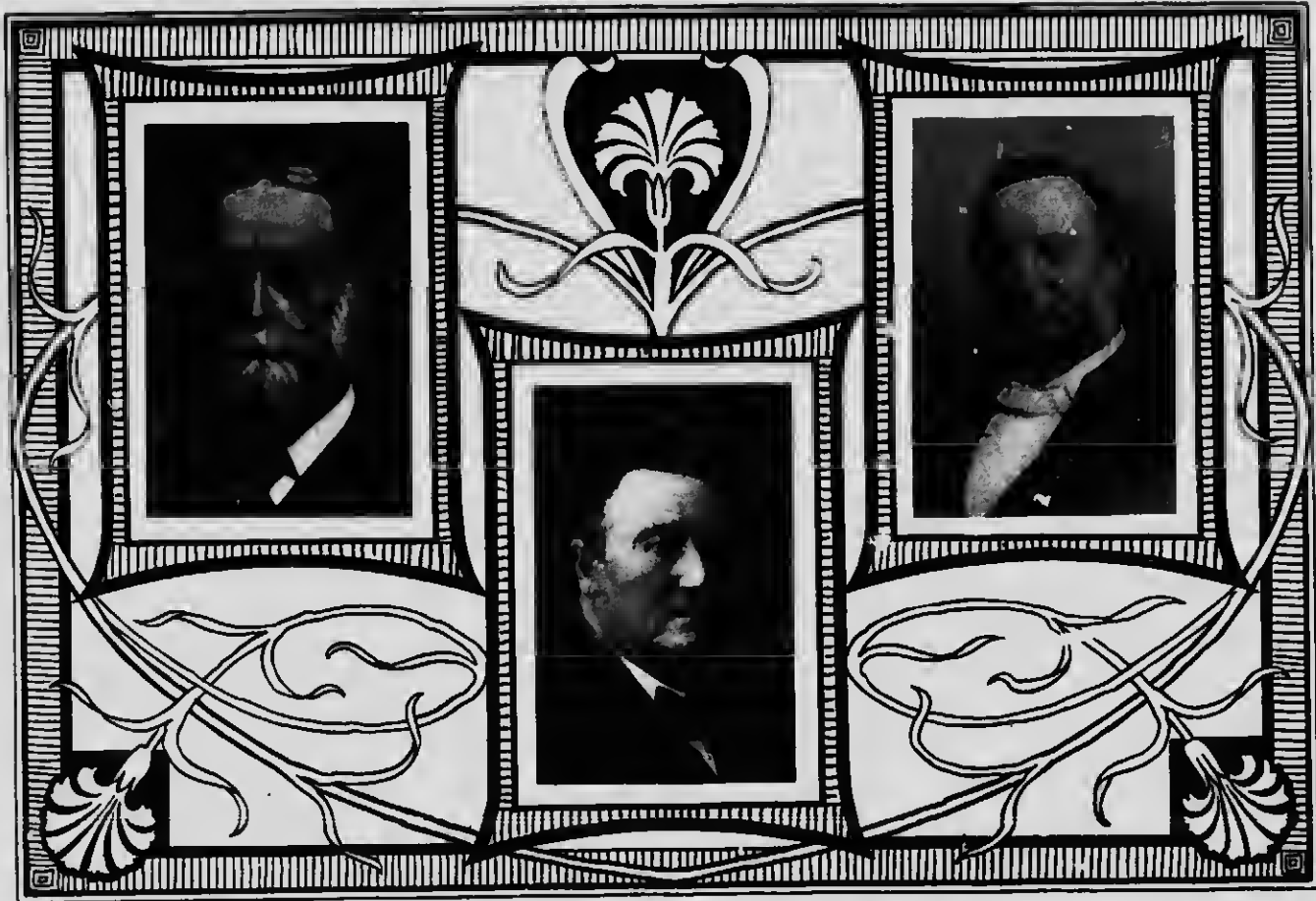
THREE VALUED LEADERS OF THE PAST

Warm words of congratulation and God speed followed from His Grace, The Archbishop and from the President of the University of Toronto.

A most pleasing feature, and that which brought the Meeting to a close, was the presentation of a case of silver to the Rev. Canon Cody, by the members of the Council and Trustees, as a slight token of the debt of gratitude owed to him by the College for his unselfish devotion during his many years of faithful service upon the Teaching Staff. Dr. Cody accepted the gift in appropriate words.

At the close of the Meeting in the Convocation Hall all adjourned to the new Dining Hall where, in a few words of prayer, His Grace the Archbishop of Toronto dedicated the New Wing to the Glory of God.

Refreshments were then partaken of and the rest of the evening was spent in a personal inspection of the New Building by the many guests. All were loud in their expression of the pleasure and satisfaction afforded by their visit to the enlarged and completed College structure.



Dr. N. W. Hoyles, K.C.

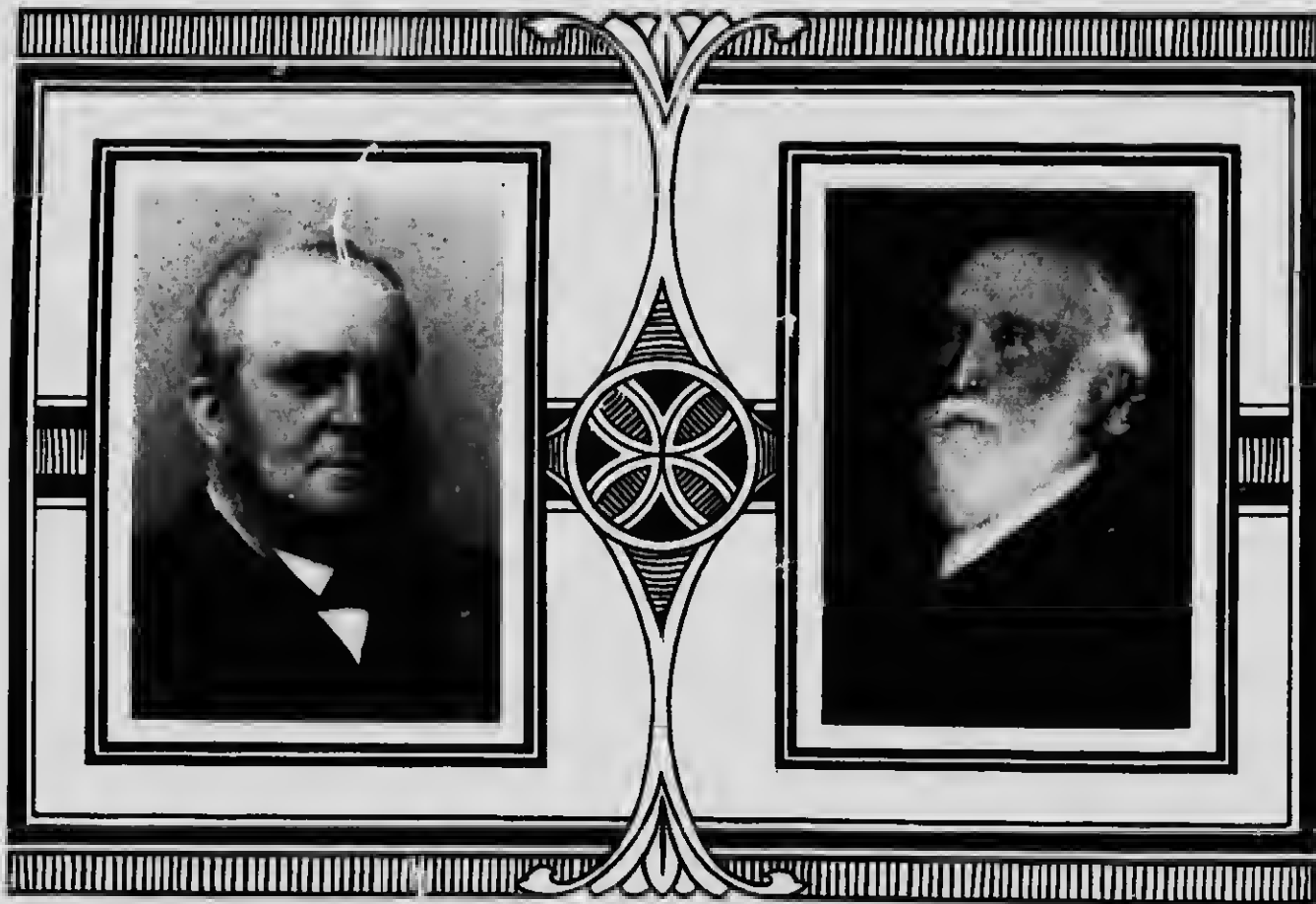
Hon. S. H. Blake, K.C.

Sir Charles Moss

THREE OF OUR PRESENT LEADERS

The Future

Thirty years have not diminished the need for Wycliffe. It may well be questioned whether it is not more wanted to-day than ever. The faithful laity of our Church rally round her as zealously as at first and love to hear of the pure Gospel taught within her walls and preached by those that have been sent forth as her representatives in all parts of the world. We thank God and take courage and pray for His continued blessing on the work.



Mr. J. Herbert Mason

Mr. A. H. Campbell

TWO GENEROUS FRIENDS OF WYCLIFFE COLLEGE AND MEMBERS OF THE COUNCIL FROM THE BEGINNING

A Few Interesting Facts and Figures

Graduates

The College has been the means of sending out to the work of the ministry 167 men. These are now laboring in the following fields :

Eastern Canada	95
Canadian North-West ..	35
The Foreign Field.....	14
Elsewhere	19

We have lost four of our graduates by death.

Students

We have at the present time 81 men in preparation for the Ministry.
These have come to us from the following Dioceses :

Toronto	22
Huron	17
Niagara	7
Saskatchewan	5
Fredericton	3
Nova Scotia	2
British Columbia	2
Ireland.....	2
England	19
Jamaica	1
Japan	1

The increase in this number is of interest and a cause for encouragement.

In the year 1903-4.....	41	students were in attendance.
“ “ 1904-5	47	“ “ “
“ “ 1905-6	56	“ “ “
“ “ 1906-7	70	“ “ “
“ “ 1907-8	81	“ “ “

Support

Our endowment now amounts to about \$150,000, but only yields one-third of our annual income.

The Maintenance Fund Subscriptions total approximately \$7,000 a year.

Both of these amounts must be very materially increased if the College is not to be seriously hampered for want of money.

Nearly 2,000 individuals are contributing more or less regularly to the funds of the College.

