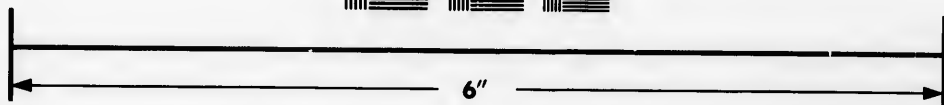
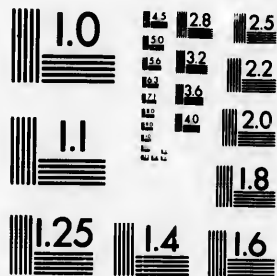


# IMAGE EVALUATION TEST TARGET (MT-3)



Photographic  
Sciences  
Corporation

23 WEST MAIN STREET  
WEBSTER, N.Y. 14580  
(716) 872-4503

1.8  
2.0  
2.2  
2.5  
2.8  
3.2  
3.6  
4.0  
4.5  
5.0

**CIHM/ICMH  
Microfiche  
Series.**

**CIHM/ICMH  
Collection de  
microfiches.**



Canadian Institute for Historical Microreproductions / Institut canadien de microreproductions historiques

01  
10

**© 1983**

Technical and Bibliographic Notes/Notes techniques et bibliographiques

The Institute has attempted to obtain the best original copy available for filming. Features of this copy which may be bibliographically unique, which may alter any of the images in the reproduction, or which may significantly change the usual method of filming, are checked below.

L'Institut a microfilmé le meilleur exemplaire qu'il lui a été possible de se procurer. Les détails de cet exemplaire qui sont peut-être uniques du point de vue bibliographique, qui peuvent modifier une image reproduite, ou qui peuvent exiger une modification dans la méthode normale de filmage sont indiqués ci-dessous.

- Coloured covers/  
Couverture de couleur
- Covers damaged/  
Couverture endommagée
- Covers restored and/or laminated/  
Couverture restaurée et/ou pelliculée
- Cover title missing/  
Le titre de couverture manque
- Coloured maps/  
Cartes géographiques en couleur
- Coloured ink (i.e. other than blue or black)/  
Encre de couleur (i.e. autre que bleue ou noire)
- Coloured plates and/or illustrations/  
Planches et/ou illustrations en couleur
- Bound with other material/  
Relié avec d'autres documents
- Tight binding may cause shadows or distortion  
along interior margin/  
La reliure serrée peut causer de l'ombre ou de la  
distortion le long de la marge intérieure
- Blank leaves added during restoration may  
appear within the text. Whenever possible, these  
have been omitted from filming/  
Il se peut que certaines pages blanches ajoutées  
lors d'une restauration apparaissent dans le texte,  
mais, lorsque cela était possible, ces pages n'ont  
pas été filmées.
- Additional comments:/  
Commentaires supplémentaires:

- Coloured pages/  
Pages de couleur
- Pages damaged/  
Pages endommagées
- Pages restored and/or laminated/  
Pages restaurées et/ou pelliculées
- Pages discoloured, stained or foxed/  
Pages décolorées, tachetées ou piquées
- Pages detached/  
Pages détachées
- Showthrough/  
Transparence
- Quality of print varies/  
Qualité inégale de l'impression
- Includes supplementary material/  
Comprend du matériel supplémentaire
- Only edition available/  
Seule édition disponible
- Pages wholly or partially obscured by errata  
slips, tissues, etc., have been refilmed to  
ensure the best possible image/  
Les pages totalement ou partiellement  
obscurcies par un feuillet d'errata, une pelure,  
etc., ont été filmées à nouveau de façon à  
obtenir la meilleure image possible.

This item is filmed at the reduction ratio checked below/  
Ce document est filmé au taux de réduction indiqué ci-dessous.

10X	14X	18X	22X	26X	30X
<input type="checkbox"/>	<input type="checkbox"/>	<input type="checkbox"/>	<input checked="" type="checkbox"/>	<input type="checkbox"/>	<input type="checkbox"/>
12X	16X	20X	24X	28X	32X

The copy filmed here has been reproduced thanks to the generosity of:

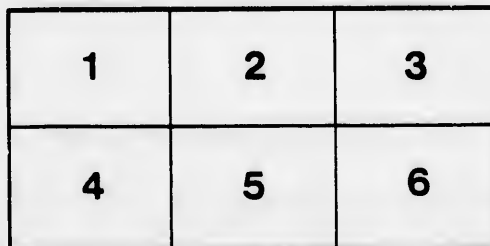
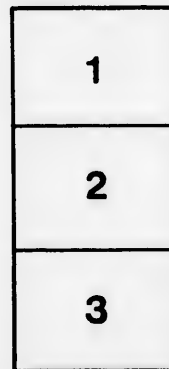
Glenbow-Alberta Institute  
Calgary

The images appearing here are the best quality possible considering the condition and legibility of the original copy and in keeping with the filming contract specifications.

Original copies in printed paper covers are filmed beginning with the front cover and ending on the last page with a printed or illustrated impression, or the back cover when appropriate. All other original copies are filmed beginning on the first page with a printed or illustrated impression, and ending on the last page with a printed or illustrated impression.

The last recorded frame on each microfiche shall contain the symbol  $\rightarrow$  (meaning "CONTINUED"), or the symbol  $\nabla$  (meaning "END"), whichever applies.

Maps, plates, charts, etc., may be filmed at different reduction ratios. Those too large to be entirely included in one exposure are filmed beginning in the upper left hand corner, left to right and top to bottom, as many frames as required. The following diagrams illustrate the method:



L'exemplaire filmé fut reproduit grâce à la générosité de:

Glenbow-Alberta Institute  
Calgary

Les images suivantes ont été reproduites avec le plus grand soin, compte tenu de la condition et de la netteté de l'exemplaire filmé, et en conformité avec les conditions du contrat de filmage.

Les exemplaires originaux dont la couverture en papier est imprimée sont filmés en commençant par le premier plat et en terminant soit par la dernière page qui comporte une empreinte d'impression ou d'illustration, soit par le second plat, selon le cas. Tous les autres exemplaires originaux sont filmés en commençant par la première page qui comporte une empreinte d'impression ou d'illustration et en terminant par la dernière page qui comporte une telle empreinte.

Un des symboles suivants apparaîtra sur la dernière image de chaque microfiche, selon le cas: le symbole  $\rightarrow$  signifie "A SUIVRE", le symbole  $\nabla$  signifie "FIN".

Les cartes, planches, tableaux, etc., peuvent être filmés à des taux de réduction différents. Lorsque le document est trop grand pour être reproduit en un seul cliché, il est filmé à partir de l'angle supérieur gauche, de gauche à droite, et de haut en bas, en prenant le nombre d'images nécessaire. Les diagrammes suivants illustrent la méthode.

Mr. Carbie,  
With compliments of  
William S. Vaux Jr.  
Bryn Mawr,  
Penn.

T. D. Kilpatrick

---

---

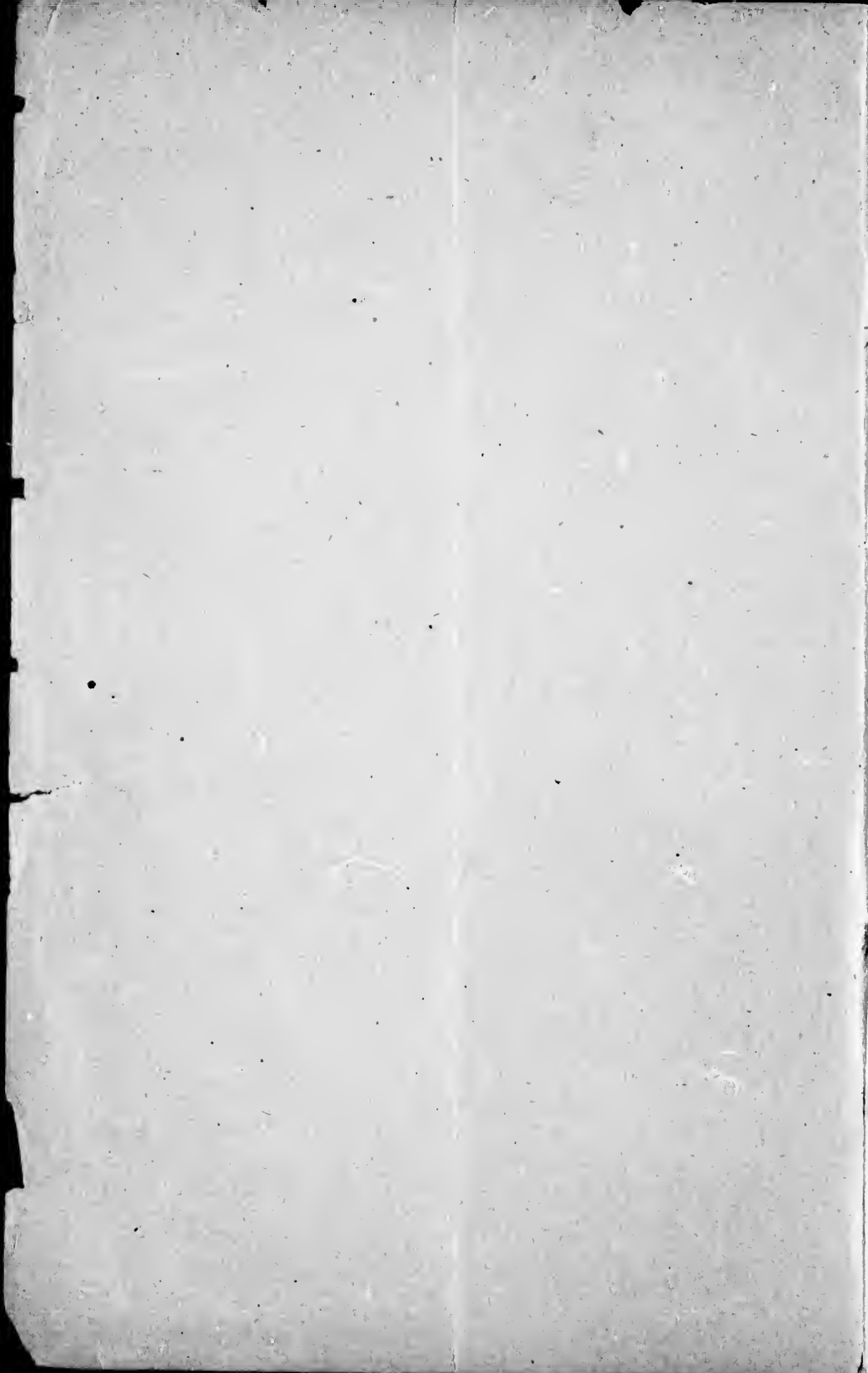
SOME OBSERVATIONS  
ON THE  
Illecellewaet and Asulkan Glaciers  
of British Columbia.

BY  
GEORGE AND WILLIAM S. VAUX, JR.

*From the Proceedings of  
The Academy of Natural Sciences of Philadelphia,  
February 7th, 1899.*

---

---



Pam  
551.312  
V385  
c.1

71.10.4/3



ILLECELLEWAET AND ASULKAN GLACIERS.

GLACIER HOUSE, BRITISH COLUMBIA.

JULY, 1898.



SOME OBSERVATIONS ON THE ILLECELLEWAET AND ASULKAN  
GLACIERS OF BRITISH COLUMBIA.

BY GEORGE AND WILLIAM S. VAUX, JR.

With but a very few exceptions it seems to be a rule at the present time that all glaciers are receding up the valleys into which they extend. Whether this will be a permanent recession, or whether a period will come during which an advance will take place, time alone will tell. That there has been a permanent recession the numerous moraines below the prominent glaciers bear ample witness, but they also show that there have been many advances between the periods of recession.

The glaciers of the Canadian Rockies offer many attractions to those interested in their action, both on account of the newness of the region in which they are located and their marked activity. The Canadian Pacific Railway, without which this region would be almost inaccessible, was first opened but a little over a dozen years ago, and before that time it was practically an unbroken wilderness. Among the most accessible glaciers from the line of the railway are those in the vicinity of the Glacier House, which is situated in the heart of the Selkirk range, at an elevation of 4,122 feet above sea level. With this point as a centre a score of glaciers may be reached. It seems to form a natural station for their observation.

The most accessible, and in some respects one of the most remarkable, is the Great or Illecellewaet Glacier, situated about one and one-half miles in a direct line from the station. The immense névé which feeds it, lies on the top of the range forming the divide, and from it several branches flow down into as many valleys. The Great Glacier is notable on two accounts: its freedom from dirt at its foot, and the remarkable rapidity of the ice fall. One of the first persons to make observations on this glacier was Dr. William S. Green, F.R.G.S., who in 1888 spent some time in surveying and exploring the region. He records that in twelve days the centre of the ice moved twenty feet, while at the side it moved only

seven feet. He also notes "that the snout of the glacier showed evidence of retreat, for there were two rows of boulders in front of it. The outer one, about sixty feet from the ice, seemed to have been dropped the previous year; the inner row during the present year."<sup>1</sup>

Since that time the glacier has been visited by a number of persons who have located the snout as respects certain marked rocks, or in some other way, but in many instances the record has become lost or uncertain so as to be of little value. At the present time the glacier is rapidly receding, and from an examination of the bare moraine and scrub below it, there seems to be evidence that this has been going on actively for a comparatively short period.

July 16, 1887—one year before Dr. Green—we first visited the glacier, and made a number of photographs of its foot (Pl. III). These photographs, after a lapse of over eleven years, make possible an exceedingly interesting comparison of the position of the ice. At the present time there is a broad space of loose boulders below the snout, utterly devoid of vegetation. In 1887 alder bushes grew within twenty feet of the ice. The slope of the ice was also very different from what it is now. There was then a great mass with steep sides extending over the present bare space, while now the ice slopes comparatively evenly till it dies away altogether in the stream. The fact that during eleven years the alder bushes have not advanced on the retreat of the ice, and that in 1887, when the photographs were taken, they were so close to it, would seem to indicate that at least for a score of years previous to 1887 the glacier had not extended materially further into the valley than it did at that time. Taking into consideration the border moraine marking the position of the ice in 1887, the alder bushes which then, as now, grew up to the lower side of the moraine, and which have increased but little in size during the eleven years, and the characteristic steepness of the slope of the ice, it would seem probable that a period of advance had occurred shortly before the year 1887. One very small moraine about 200 feet from the snout of 1898 showed an insignificant advance since that period, but apart from this the motion of the glacier appears to have been only of recession.

<sup>1</sup> Among the Selkirk Glaciers, by W. S. Green. Macmillan & Co., 1890, p. 219.

Photography seems to offer the most satisfactory means of permanently recording the position of the ice from year to year. On our visit, therefore, to the Great Glacier in 1898, a large rock was chosen on the south side of the trail, below the bridge, and some five hundred yards from the ice foot. The 1898 test view was taken from this position on the 19th of August (Pl. V). The small moraine in the lower right-hand corner is the one mentioned by Dr. Green, and shown in the pictures of 1887. The large rock marked "E" was then partly encased in the ice, as will be seen in the centre of the 1887 picture, and forms a most excellent point for identification (Pl. IV). In conjunction with the photograph a number of range rocks on the moraine were selected and marked for identification. The rocks "B" and "D" on the photograph were chosen because they were of unusual size, and were far enough from the ice to prevent any movement. A line drawn between them August 17, 1898, passed eighteen inches below the extreme snout of the glacier at "H." "B" is a large rock, with a triangular black mark on the north side. It was lettered with venetian red paint as follows:

$$\begin{array}{r|l} \text{'86-2I-III} & \blacktriangleright \\ \hline \text{VIII-17-'98} & \end{array}$$

"D" is a yellow rock which has been split in halves. It was marked on one piece, "Rock opposite lines with snout, VIII-17-'98," and on the side opposite with a vertical line and two arrows. The rock "G" was not marked, but may be easily identified by the photograph. Its highest point was fifty-nine feet to the nearest ice on August 17, 1898.

To locate the position of the snout, the rock "C," a long, rounded boulder, was chosen. It was marked "60' 0" to snout, VIII-17-'98," and with arrows.

During the warm weather of August the rate of recession was very rapid, and a few days made a marked change in the position of the ice. October 24, 1898, Mr. Hugh B. Walkem, of Vancouver, visited the glacier and compared the position of the ice with the rocks marked by us, sixty-eight days before. He found that the snout had receded forty-six feet in that interval, or eight and one-tenth inches per day.

As respects the annual rate of recession it is hard to obtain reli-

able data as a foundation. There are several rocks on the moraine which bear marks or dates as old as 1890, but most of them are so worn as to be almost illegible. We found one, however, near the border moraine above referred to which, if it had not been moved, indicated that in August, 1890, the snout was sixteen feet above a certain mark. The distance from that mark to the snout in August, 1898, was four hundred and fifty-two (452) feet, or an average annual recession of fifty-six (56) feet, during the period of eight years. There is reason to believe, however, that for a part of this period the glacier remained more nearly stationary, and in the remaining years made up for the deficiency by a much more rapid melting away.

The Asulkan Glacier being situated at the head of the valley of the same name and about four miles distant from the Glacier House is not nearly so easy of access for observation. Its névé is connected with that of the Illecellewaet over the ridge which separates them, so that while they flow into separate valleys they rise from practically the same source. We are not aware that any work has been done upon this glacier, as it is probably not visited by more than a score of persons in the course of the year. The rapidly descending stream from its foot, which is joined by another from the glaciers in the immense amphitheatre to the east, passes through a narrow cañon a quarter of a mile below the snout. In this cañon there appeared to be no sign of glacial action, which would indicate that the ice had extended below this point only before the formation of the cañon. A very large moraine flanking the glacier on the west also pointed to the fact that the ice had not receded materially in recent years.

The same methods were pursued here as in the case of the Illecellewaet Glacier. A very large rock, the top of which was smoothly glaciated, was chosen on the east side of the stream below the glacier, and the test picture was taken, August 23, 1898 (Pl. VI). While it records the general outline of the ice, it does not locate the snout, which seemed to be deeply buried in moraine. Apart from thus fixing the position of the ice on this date, it was impossible to draw any conclusions, as there are no previous records with which to make comparisons.



G. & W. S. VAUX, JR. ON GLACIERS OF BRITISH COLUMBIA.

ILLECELLEWAET GLACIER, 1887.

(ROCK "E" PLATES IV AND V IS SHOWN NEAR CENTRE OF PICTURE EMBEDDED IN ICE.)





G. & W. S. VAUX, JR. ON GLACIERS OF BRITISH COLUMBIA.  
ROCK "E" PARTLY COVERED BY ICE IN 1887  
(VERTICAL LINE SHOWS EDGE OF ICE.)

G. & W. S. VAUX, JR. ON GLACIERS OF BRITISH COLUMBIA.  
ILLEGELLEWAET GLACIER FROM TEST ROCK. 1898.





G. & W. S. VAUX, JR. ON GLACIERS OF BRITISH COLUMBIA.  
ILLELLEWAIET GLACIER FROM TEST ROCK. 1895.





G. & W. S. VAUX, JR. ON GLACIERS OF BRITISH COLUMBIA.  
ASULKAN GLACIER FROM TEST ROCK. 1876.

