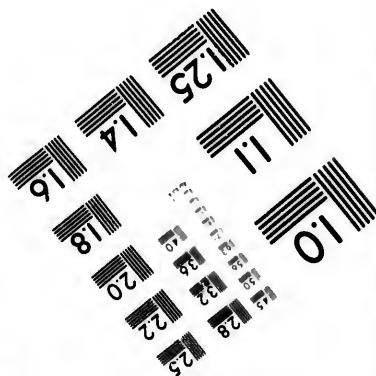
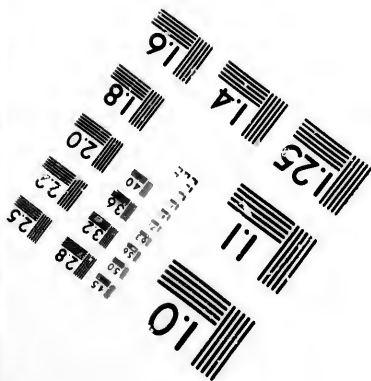
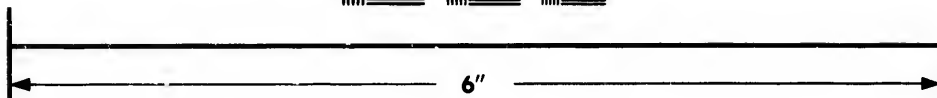
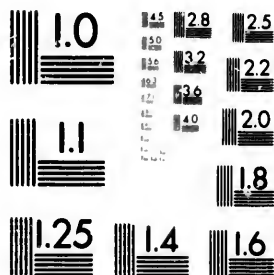


**IMAGE EVALUATION
TEST TARGET (MT-3)**



**Photographic
Sciences
Corporation**

23 WEST MAIN STREET
WEBSTER, N. Y. 14580
(716) 872-4503



**CIHM/ICMH
Microfiche
Series.**

**CIHM/ICMH
Collection de
microfiches.**



Canadian Institute for Historical Microreproductions

Institut canadien de microreproductions historiques

1980

Technical and Bibliographic Notes/Notes techniques et bibliographiques

The Institute has attempted to obtain the best original copy available for filming. Features of this copy which may be bibliographically unique, which may alter any of the images in the reproduction, or which may significantly change the usual method of filming, are checked below.

L'Institut a microfilmé le meilleur exemplaire qu'il lui a été possible de se procurer. Les détails de cet exemplaire qui sont peut-être uniques du point de vue bibliographique, qui peuvent modifier une image reproduite, ou qui peuvent exiger une modification dans la méthode normale de filmage sont indiqués ci-dessous.

- Coloured covers/
Couverture de couleur
- Covers damaged/
Couverture endommagée
- Covers restored and/or laminated/
Couverture restaurée et/ou pelliculée
- Cover title missing/
Le titre de couverture manque
- Coloured maps/
Cartes géographiques en couleur
- Coloured ink (i.e. other than blue or black)/
Encre de couleur (i.e. autre que bleue ou noire)
- Coloured plates and/or illustrations/
Planches et/ou illustrations en couleur
- Bound with other material/
Relié avec d'autres documents
- Tight binding may cause shadows or distortion
along interior margin/
La reliure serrée peut causer de l'ombre ou de la
distortion le long de la marge intérieure
- Blank leaves added during restoration may
appear within the text. Whenever possible, these
have been omitted from filming/
Il se peut que certaines pages blanches ajoutées
lors d'une restauration apparaissent dans le texte,
mais, lorsque cela était possible, ces pages n'ont
pas été filmées.
- Additional comments:/
Commentaires supplémentaires:

- Coloured pages/
Pages de couleur
- Pages damaged/
Pages endommagées
- Pages restored and/or laminated/
Pages restaurées et/ou pelliculées
- Pages discoloured, stained or foxed/
Pages décolorées, tachetées ou piquées
- Pages detached/
Pages détachées
- Showthrough/
Transparence
- Quality of print varies/
Qualité inégale de l'impression
- Includes supplementary material/
Comprend du matériel supplémentaire
- Only edition available/
Seule édition disponible
- Pages wholly or partially obscured by errata
slips, tissues, etc., have been refilmed to
ensure the best possible image/
Les pages totalement ou partiellement
obscurcies par un feuillet d'errata, une pelure,
etc., ont été filmées à nouveau de façon à
obtenir la meilleure image possible.

This item is filmed at the reduction ratio checked below/
Ce document est filmé au taux de réduction indiqué ci-dessous.

10X	14X	18X	22X	26X	30X
<input type="checkbox"/>	<input type="checkbox"/>	<input checked="" type="checkbox"/>	<input type="checkbox"/>	<input type="checkbox"/>	<input type="checkbox"/>
12X	16X	20X	24X	28X	32X

The copy filmed here has been reproduced thanks to the generosity of:

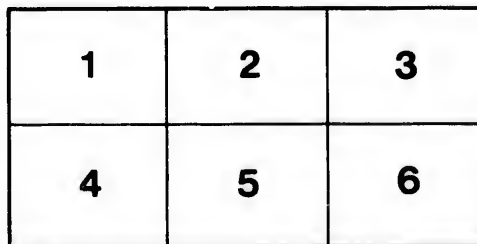
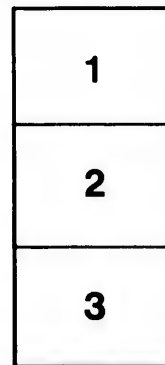
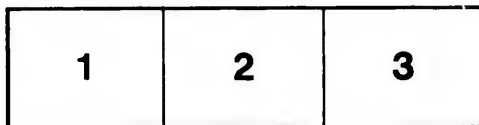
Ralph Pickard Bell Library
Mount Allison University

The images appearing here are the best quality possible considering the condition and legibility of the original copy and in keeping with the filming contract specifications.

Original copies in printed paper covers are filmed beginning with the front cover and ending on the last page with a printed or illustrated impression, or the back cover when appropriate. All other original copies are filmed beginning on the first page with a printed or illustrated impression, and ending on the last page with a printed or illustrated impression.

The last recorded frame on each microfiche shall contain the symbol \rightarrow (meaning "CONTINUED"), or the symbol ∇ (meaning "END"), whichever applies.

Maps, plates, charts, etc., may be filmed at different reduction ratios. Those too large to be entirely included in one exposure are filmed beginning in the upper left hand corner, left to right and top to bottom, as many frames as required. The following diagrams illustrate the method:



L'exemplaire filmé fut reproduit grâce à la générosité de:

Ralph Pickard Bell Library
Mount Allison University

Les images suivantes ont été reproduites avec le plus grand soin, compte tenu de la condition et de la netteté de l'exemplaire filmé, et en conformité avec les conditions du contrat de filmage.

Les exemplaires originaux dont la couverture en papier est imprimée sont filmés en commençant par le premier plat et en terminant soit par la dernière page qui comporte une empreinte d'impression ou d'illustration, soit par le second plat, selon le cas. Tous les autres exemplaires originaux sont filmés en commençant par la première page qui comporte une empreinte d'impression ou d'illustration et en terminant par la dernière page qui comporte une telle empreinte.

Un des symboles suivants apparaîtra sur la dernière image de chaque microfiche, selon le cas: le symbole \rightarrow signifie "A SUIVRE", le symbole ∇ signifie "FIN".

Les cartes, planches, tableaux, etc., peuvent être filmés à des taux de réduction différents. Lorsque le document est trop grand pour être reproduit en un seul cliché, il est filmé à partir de l'angle supérieur gauche, de gauche à droite, et de haut en bas, en prenant le nombre d'images nécessaire. Les diagrammes suivants illustrent la méthode.

ails
du
odifier
une
mage

rrata
to

pelure,
on à



INTERCOLONIAL

RAILWAY OF CANADA.



Pocket Time Table

JULY 18th, 1892.



GEO. TAYLOR,

GENERAL FREIGHT AGENT.

A. BUSBY,

GENERAL PASS'G AGENT.

D POTTINGER,

CHIEF SUPERINTENDENT.

4E
280
I5
1892
BEL

TRAINS OF THE INTERCOLONIAL RAILWAY ARE
 RUN BY EASTERN STANDARD TIME.

1892.

JANUARY.							MAY.							SEPTEMBER.						
S	M	T	W	T	F	S	S	M	T	W	T	F	S	S	M	T	W	T	F	S
..	1	2	1	2	3	4	5	6	7	1	2	3
3	4	5	6	7	8	9	8	9	10	11	12	13	14	4	5	6	7	8	9	10
10	11	12	13	14	15	16	15	16	17	18	19	20	21	11	12	13	14	15	16	17
17	18	19	20	21	22	23	22	23	24	25	26	27	28	18	19	20	21	22	23	24
24	25	26	27	28	29	30	29	30	31	25	26	27	28	29	30	..
31
FEBRUARY.							JUNE.							OCTOBER.						
S	M	T	W	T	F	S	S	M	T	W	T	F	S	S	M	T	W	T	F	S
..	1	2	3	4	5	6	1	2	3	4	1	2	3	
7	8	9	10	11	12	13	5	6	7	8	9	10	11	2	3	4	5	6	7	8
14	15	16	17	18	19	20	12	13	14	15	16	17	18	9	10	11	12	13	14	15
21	22	23	24	25	26	27	19	20	21	22	23	24	25	16	17	18	19	20	21	22
28	29	26	27	28	29	30	23	24	25	26	27	28	29
..	30	31
MARCH.							JULY.							NOVEMBER.						
S	M	T	W	T	F	S	S	M	T	W	T	F	S	S	M	T	W	T	F	S
..	..	1	2	3	4	5	1	2	1	2	3	4	5	
6	7	8	9	10	11	12	3	4	5	6	7	8	9	6	7	8	9	10	11	12
13	14	15	16	17	18	19	10	11	12	13	14	15	16	13	14	15	16	17	18	19
20	21	22	23	24	25	26	17	18	19	20	21	22	23	20	21	22	23	24	25	26
27	28	29	30	31	24	25	26	27	28	29	30	27	28	29	30
..	31
APRIL.							AUGUST.							DECEMBER.						
S	M	T	W	T	F	S	S	M	T	W	T	F	S	S	M	T	W	T	F	S
..	1	2	..	1	2	3	4	5	6	1	2	3
3	4	5	6	7	8	9	7	8	9	10	11	12	13	4	5	6	7	8	9	10
10	11	12	13	14	15	16	14	15	16	17	18	19	20	11	12	13	14	15	16	17
17	18	19	20	21	22	23	21	22	23	24	25	26	27	18	19	20	21	22	23	24
24	25	26	27	28	29	30	28	29	30	31	25	26	27	28	29	30	31
..

THROUGH EXPRESS TRAIN CARS ARE BRIL-
 LIANTLY LIGHTED BY ELECTRICITY.

AT STATIONS WHERE TRAIN TIME IS MARKED WITH A *. TRAINS
 STOP ONLY WHEN SIGNALLED OR WHEN THERE
 ARE PASSENGERS TO SET DOWN.

Department of Railways & Canals



CANADIAN GOVERNMENT RAILWAYS.

Intercolonial System,	1154 Miles.
Prince Edward Island System,	211 do
Total,	1365 do

COLLINGWOOD SCHREIBER,

*Chief Engineer and General Manager
Canadian Government Railways, Ottawa.*

INTERCOLONIAL SYSTEM.

General Officers Resident at Moncton, N. B.

D. POTTINGER,	<i>Chief Superintendent.</i>
P. S. ARCHIBALD,	<i>Chief Engineer.</i>
A. BUSBY,	<i>General Passenger Agent.</i>
GEO. TAYLOR,	<i>General Freight Agent.</i>
THOS. WILLIAMS,	<i>Chief Accountant and Treasurer.</i>
H. A. WHITNEY,	<i>Mechanical Superintendent.</i>
T. V. COOKE,	<i>General Storekeeper.</i>

IN CHARGE OF DISTRICTS.

J. J. WALLACE, Truro, N. S.,	<i>Superintendent Halifax and St. John District.</i>
JAS. E. PRICE, Campbellton, N.B.,	<i>Superintendent Moncton and Ste. Flavie District.</i>
A. R. McDONALD, Rivière du Loup, P.Q.,	<i>Superintendent Ste. Flavie and Quebec District.</i>
F. D. LAURIE, New Glasgow, N.S.,	<i>Superintendent Oxford and Sydney District.</i>

PRINCE EDWARD ISLAND SYSTEM.

General Officers Resident at Charlottetown.

JOSEPH UNSWORTH,	<i>Superintendent.</i>
W. T. HUGGAN,	<i>Accountant.</i>

GOING WEST.
Halifax to Truro, Pictou, Point du Chene & St. John.

Miles	STATIONS.	St. John Day Exp	Through Express.	Pictou Accom.	Freight.	Suburban Express.
0	Halifax D	6 45	18 40	16 00	12 30	17 30
1	Richmond	*16 03	12 40	17 30
4	Rockingham ..	6 55	*18 48	16 10	12 53	17 40
9	Bedford	7 08	*18 59	16 20	13 14	17 50
12	Rocky Lake	*7 15	*16 27
14	Windsor Junc	7 23	16 33
22	Wellington	7 39	16 50
23	Grand Lake	*7 44	*16 54
25	Oakfield	*7 46	*16 57
28	Enfield	7 54	*19 35	17 05
30	Elmedale	8 00	*19 40	17 12
37	Millford	8 15	*19 52	17 28
40	Shubenacadie ..	8 23	20 00	17 38
45	Stewiacke	8 33	*20 08	17 49
49	Alton	*8 44	*18 01
54	Brookfield	8 55	*20 25	18 14
58	Johnson	*9 04	20 32	*18 24
62	Truro (Din. { A	9 15	20 40	18 35
	R'm) .. { D	9 25	20 50
70	Belmont	9 42	*21 03
73	Debert	9 51	*21 10
75	East Mines	9 56
79	Londonderry	10 04	21 21
87	Folleigh	10 21
91	Wentworth	10 32	*21 45
96	Westchester	10 42	*21 54
97	Greenville	10 45	21 57
104	Thomson	11 01	22 10
108	Oxford Junction ..	11 11	22 19
111	River Philip	11 16
115	Salt Springs	11 25	*22 31
121	Spring Hill Junc..	11 45	22 50	6 40
127	Athol	11 59	*23 00	6 58
130	Maccan	12 07	*23 07	7 09
134	Nappan	12 15	*23 14	7 20
138	Amherst D... { A	12 25
	R... { D	12 45	23 23	7 34
144	Aulac	13 00	*23 35	7 54
148	Sackville	13 09	23 42	8 06
160	Dorchester	13 35	*4 04	8 43
162	Rockland	*13 41	8 52
165	College Bridge ..	*13 47	*24 15	9 01
167	Menramcook	13 52	24 19	9 07
173	Calhoun	*14 03	9 22
174	Meadow Brook	*14 06	St. John	9 30
179	Painsec Junc ... A	14 20	Accom.	9 45
0	Point du Chene .. D	13 40	6 50	9 10
2	Shediac	13 45	7 08	9 20
7	Dorchester Road ..	*13 57	*7 20	9 30
12	Painsec Junc ... A	14 10	7 35	9 45
179	Painsec Junc ... D	14 25	7 40	9 45
184	Humphreys	*14 30	*7 53	*10 01
186	Moncton D... { A	14 45	24 55	8 00	10 10
	R... { D	14 55	1 15	8 15
196	Boundary Creek ..	*15 14	*8 45
199	Salisbury	15 20	1 39	8 54
204	Pollet River	*15 31	*9 08
209	Petitcodiac	15 42	1 52	9 23
215	Anagance	15 54	*2 05	9 40
224	Penobscia	16 14	*2 23	Sussex	10 10
229	Plumwessop	*16 24	Express	*10 25
232	Sussex Din... { A
	Rm... { D	16 30	2 37	6 40	10 35
236	Apoahqui	16 43	2 44	6 50	10 49
243	Norton	17 00	2 56	7 06	11 10
248	Bloomfield	17 14	7 17	11 26
249	Passekeag	*17 19	*7 21	*11 31
253	Hampton	17 30	3 15	7 31	11 45
259	Nauwigwauk	17 45	*3 25	7 47	12 00	12 00
262	Model Farm	*17 53	*7 55	*12 37
263	Quispansis	17 58	8 00	*12 15	12 45
267	Rothsay	18 07	*3 40	8 07	12 25	13 18
268	Riverside	*18 10	*8 11	*12 29	*13 25
270	Terryburn	*18 15	*8 15	*12 34	*13 31
271	Brookville	*18 19	*8 19	*12 38	*13 36
272	Coldbrook	18 22	8 22	12 41	13 41
275	St. John	18 30	3 55	8 30	12 50	13 55

First-class Car to Bedford.

See Pictou Branch.

Sp. Hill and Moncton Accom.

Connects with Day Express St. John to Halifax.

First-class Car Hampton to St. John.

122795

Mount St. University HE 2804.I5.1842
 Library BELL

GOING EAST.

St. John to Point du Chene, Truro, Pictou & Halifax.

Miles.	STATIONS.	Hal'x Day Exp	Pt du Chene Acc.	Th'rh'g Exp.	Th'rh'g Exp.	Sussex Exp.	Freight	
0	St. John	D	7 00	10 30	13 00	22 10	16 35	17 35
3	Coldbrook		7 09	10 41		22 16	16 44	17 46
3	Brookville		*7 12	*10 45		*22 18	*16 47	*17 50
6	Torryburn		*7 15	*10 50		*22 21	*16 50	*17 55
8	Riverside		*7 19	*10 55		*22 24	*16 54	*18 01
9	Rothsay		7 23	11 00	13 18	22 27	16 58	18 07
12	Quispamsis		7 33	11 11		*22 33	17 06	18 19
14	Model Farm		*7 38	*11 17			*17 10	*18 25
17	Nauwigewauk		7 47	11 28		*22 42	17 18	18 36
22	Hampton		7 58	11 45	13 42	22 53	17 30	18 56
27	Pas skeag		*8 06	*12 00			*17 42	
28	Bloomfield		8 09	12 05		*23 03	17 46	
33	Norton		8 19	12 22		*23 12	17 58	
40	Apohaqui		8 31	12 45		*23 24	18 15	
44	Sussex	Dln. R'm		13 00			18 25	
44			8 40	13 15	14 22	23 32		
47	Plumweseep		*8 45	*13 26				
51	Penobscuis		8 53	13 40		23 47		
61	Anagance		9 13	14 10				
67	Petticodiac		9 23	14 28	15 03	24 15		
72	Pollet River		*9 33	*14 44				
76	Salisbury		9 43	15 45	15 20	24 34		
79	Boundary Creek		*9 50	*15 55				
89	Monoton	D	10 10	16 25	15 45	1 00		
89		R	10 20	16 45	15 50	1 20		
92	Humphreys		*10 26	*16 53				
97	Painsec Junc.	A	10 38	17 10	*16 06			
0	Painsec Junc.	D	10 45	17 15			14 30	
5	Dorchester Road		*11 00	*17 29			*14 45	
9	Shediac		11 13	17 43			15 05	
12	Pt. du Chene	A	11 20	17 50			15 15	
97	Painsec Junc.	D	10 43		*16 06			
102	Meadow Brook		*10 55		*16 17			
104	Calhouns		*11 00		*16 22			
119	Memramcook		11 11		16 33	*1 57		
111	College Bridge		*11 16		*16 37	*2 00		
113	Rockland		*11 23		*16 44			
116	Dorchester		11 30		16 50	2 11		
128	Sackville		11 56		17 16	2 33		
131	Aulac		12 05		*17 25			
137	Amherst	D	12 20					
142		R	12 40		17 40	2 53		
142	Nappan		12 50		*17 50	*3 01		
145	Maccan		12 59		*17 59	*3 08		
149	A'hol		13 07		*18 07	*3 15		
155	Spring Hill Junction		13 25		18 25	3 30		
161	Salt Springs		13 39		*18 37	*3 42		
165	River Philip		13 48					
167	Oxford Junction		13 53		*18 48	3 54		
171	Thomson		14 03		*18 56	*4 01		
170	Greenville		14 19		*19 09	*4 15		
180	Westchester		14 22					
185	Wentworth		14 32			*4 26		
189	Folleigh		14 42					
197	Londonderry		14 59		19 42	4 49		
200	East Mines		15 06					
203	Debert		15 11			*4 59		
206	Belmont		15 19		Hal'x Acc.	20 15	*5 06	
214	Truro	(Dln. R'm)	15 35		9 40	20 25	5 30	
218	Johnson		*16 06	*9 53	20 32	*5 40		
222	Brookfield		16 15	10 04		5 48		
226	Alton		*16 27	*10 18		*6 00		
231	Stewiacke		16 38	10 31		6 11		
235	Shubenacadie		16 49	10 44	*21 00	6 21		
239	Milford		16 58	10 55		6 30		
245	Elmsdale		17 12	11 13		6 45		
248	Enfield		17 19	11 20		6 51		
251	Oakfield		*17 26	*11 30		*6 59		
252	Grand Lake		*17 29	*11 34		*7 02		
254	Wellington		17 33	11 39		7 06		
262	Windsor Junc		17 49	12 00		7 23		
264	Rocky Lake		*17 55	*12 07		*7 30		
267	Bedford		18 01	12 15	*21 50	7 36		
271	Rockingham		18 11	12 28	*22 01	7 49		
274	Richmond			12 37				
275	Halifax	A	18 20	12 40	22 10	8 00		

First Class car
St. John to Hampton.

Connecting with Day
Express from Halifax.

Connects with Day Express
St. John to Halifax.

First-class Car
Hampton to St. John.

12 00
12 24
*12 37
12 45
13 18
*13 25
*13 31
*13 36
13 41
13 55

INTERCOLONIAL RAILWAY.

TRAINS TO AND FROM PICTOU.

Miles.	STATIONS.	Ex-press.	Pictou Accom.	Accom.	Accom.	Accom.	Freight.
0	Halifax D	6 45	16 00				
0	Truro D	9 30	18 40				6 45
5	Valley D	9 41	18 52				7 03
9	Union D	*9 50	*19 05				*7 20
13	Riverdale D	9 59	19 16				7 35
17	Campbell's D		19 30				
21	West River D	10 16	19 41				8 04
26	Landowne D	*10 26	*19 54				*8 26
29	Glengarry D	10 33	20 02				8 40
35	Hopewell D	10 47	20 18	6 40	17 30		9 08
37	Eureka Junction. D	*10 52	*20 25	*6 47	*17 36		*9 19
41	Stellarton A	11 00	20 35	6 55	17 45		9 35
0	Stellarton D	11 05	20 40	7 05			
3	Westville D	11 14	20 48	7 14			
8	Sylvester D	*11 28	*21 02	*7 28			
11	Lochbrook D	*11 36	*21 10	*7 36			
14	Brown's Point. ... D	11 41	21 15	7 41			
18	Pictou A	11 45	21 20	7 45			
41	Stellarton D		20 40	6 55	17 45	5 35	
43	New Glasgow. A		20 50	7 05	17 55	5 43	
0	New Glasgow. D			7 10	16 00	5 43	
1	Trenton A			7 14	16 04	5 47	
8	Pictou Landing. A			7 35	16 25		
0	Stellarton D	11 05	11 15		18 45		9 30
2	New Glasgow. A	11 15	11 25		18 55		10 00
43	New Glasgow. D	11 35					10 45
49	Woodburn D	*11 50					*11 10
53	West Merigomish. D	12 00					11 30
57	Merigomish D	12 08					11 44
62	Piedmont D	12 20					12 30
65	Avondale D	12 29					12 46
67	Barney's River. ... D	12 34					12 55
71	Marshy Hope. D	12 44					13 10
75	James River D	12 53					13 26
79	Brierly's Brook. ... D	*13 02					*13 43
85	Antigonish D	13 15					14 20
89	South River D	13 28					14 38
92	Taylor's Road. D	*13 33					*14 44
95	Pomquet D	13 40					14 55
97	Heatherton D	13 45					15 01
99	Bayfield Road. D	13 50					15 10
101	Afton D	13 55					15 15
105	Tracadie D	14 05					15 45
106	Girron D	*14 08					*15 51
109	Linwood D	*14 16					*16 05
113	Harbor au Bouche. D	14 25					16 20
117	Cape Porcupine. ... D	*14 35					*16 37
123	Mulgrave A	14 50					17 00
124	Pt. Tupper. D	15 35					9 30
125	Hawkesbury. D	*15 38					*9 34
128	Mines Road. D	*15 47					*9 45
131	MacIntyre's Lake. D	15 54					9 55
138	West Bay Road. ... D	16 10					10 20
141	River Denny's D	16 26					10 45
149	Orangedale D	16 43					11 14
160	McKinnon's H'b'r ... D	*17 06					*11 53
165	Iona D	17 17					12 12
166	Grand Narrows } A	17 23					12 18
	} D	17 43					12 45
175	Shenacadie D	*18 02					*13 37
184	Boldale D	*18 20					*13 58
195	George's River. ... D	*18 42					*14 43
199	Nor. Sydney Jct. A	18 52					15 00
0	Nor. Sydney Jct. D	18 54	20 25	6 55			15 05
5	North Sydney. ... A	19 04	20 40	7 10			15 20
199	Nor. Sydney Jct. D	19 27					15 48
203	Leitchs Creek. ... D	19 33					15 58
214	Sydney A	19 55					16 40

Tuesdays, Thursdays and Saturdays.

Monday's, Wednesday's, Friday's.

DAIRMOUTH BRANCH.—A Train will leave Dartmouth for Halifax Station at 6.15 o'clock, and Halifax for Dartmouth at 12.35 o'clock, or on arrival of Day Express from St. John.

INTERCOLONIAL RAILWAY.

MULGRAVE AND SYDNEY, C.B.

Miles	STATIONS.	Express.	Express.	Freight.	Accom.	Accom.	Frht.
0	Sydney Dep	9 55	5 00
11	Leitches Creek...	10 18	6 40
13	North Sydney Jc. A	10 23	6 50
0	North Sydney ... D	10 45	19 09	15 25	7 15
5	North Sydney Jc. A	10 55	19 24	15 40	7 30
13	North Sydney Jc. D	10 58	7 35
17	George's River...	*11 06	*7 50
28	Boisdale	*11 30	*8 37
37	Shenacadie	*11 50	*9 05
45	Grand Narrows } A	12 08	9 40
	} D	12 28	10 00
46	Iona	12 34	10 06
51	McKinnon's Harb.	*12 45	*10 26
52	Orangedale	13 08	11 04
61	River Deny's	13 25	11 38
70	West Bay Road...	13 40	12 05
77	MacIntyre's Lake	13 55	12 30
87	Mines Road	*14 01	*12 41
90	Hawkesbury	*14 08	*12 55
91	PointTupper. A	14 10	13 00
92	Mulgrave	14 55	5 00
98	Cape Porcupine...	*15 09	*5 20
102	Harbor au Bouche.	15 19	5 35
106	Linwood	*15 28	*5 47
110	Girroirs	*15 36	*6 00
111	Tracadie	15 40	6 04
115	Afton	15 50	6 19
116	Bayfield Road...	15 53	6 24
119	Heatherton	15 59	6 31
121	Pomquet	16 04	6 40
124	Taylor's Road...	*16 12	*6 50
126	South River	16 15	6 56
131	Antigonish	16 28	7 30
136	Brierly's Brook...	*16 41	*7 51
140	James River	16 51	8 08
144	Marshy Hope	17 00	8 24
148	Barney's River	17 10	8 40
150	Avondale	17 15	8 47
154	Piedmont	17 25	9 03
158	Merigomish	17 37	9 23
162	West Merigomish.	17 45	9 36
166	Woodburn	*17 55	*9 55
172	New Glasgow. A	18 10	Accom.	10 20
172	New Glasgow. D	18 25	6 45	20 20	11 25
174	Stellarton ... A	18 35	6 55	20 30	11 35
0	Pictou Landing. D	16 35	8 10
7	Trenton	5 47	16 56	8 31
8	New Glasgow ... A	5 51	17 00	8 35
172	New Glasgow. D	5 51	17 00	10 45
174	Stellarton ... A	6 00	17 10	10 55
0	Pictou	17 45	6 00	10 00
2	Brown's Point	17 50	6 06	10 08
3	Lochbroom	*17 55	*6 12	*10 14
6	Sylvester	*18 02	*6 20	*10 23
11	Westville	18 20	6 35	10 39
14	Stellarton ... A	18 30	6 45	10 50
174	Stellarton ... D	18 40	7 05	17 10	6 10	11 50
178	Eureka Junction...	*18 47	*7 15	*17 19	*6 21	*12 10
179	Hopewell	18 52	7 22	17 25	6 30	12 25
186	Glengarry	19 06	7 42	12 53
189	Lansdowne	*19 12	*7 50	*13 07
194	West River	19 22	8 04	13 28
198	Campbell's	19 30
202	Riversdale	19 38	8 28	14 03
205	Union	*19 46	*8 39	*14 19
210	Valley	19 55	8 52	14 39
214	Truro	20 05	9 05	15 00
276	Halifax	22 10	12 40	18 20

*Trains stop only when signalled or when there are passengers to set down.

INTERCOLONIAL RAILWAY.

GOING WEST.
Trains from Halifax and St John for Quebec and Montreal.

Mile.	STATIONS.	Through Express.	Accommodation.	
0	Halifax.....	D 18 40		
5	Rockingham.....	*18 48		
9	Hedford.....	*18 59		
29	Enfield.....	*19 35		
36	Milford.....	*19 52		
40	Shubenacadie.....	20 00		
54	Brookfield.....	*20 25		
62	Truro (Din. R'm.) } A D	20 40		
74	Debert.....	*21 10		
79	Londonderry.....	21 21		
91	Wentworth.....	*21 45		
97	Greenville.....	21 57		
104	Thomson.....	22 10		
108	Oxford Junct.	22 19		
122	Spring Hill Junction.....	22 50		
131	Maccan.....	*23 07		
134	Nappao ..	*23 14		
139	Amherst (Dining Room) } A D	23 23		
145	Aulac.....	*23 35		
148	Sackville.....	23 42		
160	Dorchester.....	24 04		
165	College Bridge.....	*24 15		
167	Memramcook.....	24 19		
186	Moncton (D. R.).....	A 24 55		
0	St. John.....	D 22 10	7 00	Freight.
89	Moncton.....	A 1 00	10 10	
186	Moncton.....	D 1 15	10 20	6 15
194	Berry's Mills.....	*1 27	10 40	6 42
205	Canaan.....	*1 45	11 14	7 26
214	Coal Branch.....		11 39	8 00
217	Adamsville.....		*11 49	*8 12
223	Harcourt.....	2 14	A 12 05 D 12 25	8 35 8 45
232	Kent Junction.....		12 50	9 15
243	Rogersville.....	*2 46	13 24	9 53
255	Barnaby River.....		14 00	10 35
258	Chatham Junct.	3 10	14 10	11 15
261	Derby Junct.....	3 15	14 19	11 25
264	Newcastle.....	3 25	14 45	12 15
274	Beaver Brook.....		15 12	12 49
285	Bartibogue.....		15 44	13 30
295	Red Pine.....		16 15	14 09
303	Gloucester Junct.		16 39	14 40
308	Bathurst.....	4 32	16 54	15 15
320	Petite Roche.....	*4 50	17 27	15 52
328	Belledune.....		17 50	16 20
337	Jacquet River.....	*5 19	18 16	16 53
347	New Mills.....	*5 35	18 45	17 28
352	Charlo.....	*5 44	19 02	17 46
358	Eel River.....	*5 54	19 19	18 05
362	Dalhousie junct.....	A 6 00	19 30	18 20
0	Dalhousie.....	D 5 30	19 10	
7	Dalhousie Jct.....	A 5 50	19 30	
362	Dalhousie Junction..	D 6 00	19 45	18 35
371	Campbellton.....	A 6 15	20 10	19 05

DALHOUSIE BRANCH.—Passengers to and from Dalhousie change cars at Dalhousie Junction. Local Train leaving Dalhousie at 5.30 o'clock connects with Through Express for Quebec and Accommodation from Campbellton for Moncton; at 19.10 with Through Express for St. John and Halifax and Accommodation for Campbellton.

Local Train leaving Dalhousie Junction for Dalhousie at 6.05 connects with Through Express from St. John and Halifax, and Accommodation from Campbellton; at 19.45 with Through Express from Quebec and Accommodation from Moncton.

Indiantown Branch.—A Train leaves Indiantown daily, at 9.30 o'clock, for Newcastle, returning leaves Newcastle for Indiantown at 15.00 o'clock. These trains connect with Accommodation trains for Moncton and Campbellton.

● 20 Minutes for dinner.

INTERCOLONIAL RAILWAY.

GOING EAST.

Trains from Quebec for Halifax and St. John.

Miles	STATIONS.	Through Express.	Ste. Flavie Express.	Accommodation.
0	Quebec		By Ferry	
0	Levis	8 30	14 20	18 05
2	St. Joseph			18 15
5	Harlaka Junc.	8 41	14 31	18 21
14	St. Charles Junc.	*9 00	14 50	18 50
20	St. Michel		*15 05	*19 13
24	St. Vallier		15 13	19 25
29	St. Francois		15 25	19 43
32	St. Pierre		15 33	19 55
37	St. Thomas	9 38	15 45	20 13
44	Cap St. Ignace		16 00	20 36
47	L'Anse a Gile		*16 07	*20 47
50	L'Islet	*10 00	16 15	21 00
54	Trois Saumons		*16 25	*21 15
59	St. Jean Port Joli		16 35	21 30
62	Elgin Road		*16 43	*21 44
66	St. Roch		16 53	21 57
74	Ste. Anne	10 38	17 10	22 24
80	Riviere Ouelle		17 24	22 46
84	St. Philippe de Neri		17 33	23 00
89	St. Paschal	11 04	17 46	23 20
95	Ste. Helene		17 59	23 39
98	St. Andre		*18 07	23 52
103	St. Alexandre		18 18	24 07
109	Old Lake Road		18 31	24 29
115	Riviere du Loup	{ A 11 45 D 11 55	18 45	24 50
120	Cacouna	12 10	18 55	7 15
122	St. Arsene	12 16	19 08	7 34
131	Isle Verte	12 38	19 13	7 40
135	St. Eloie		19 30	8 06
142	Trois Pistoles	{ D 13 05 R 13 25	19 40	8 23
151	St. Simon		19 55	8 45
160	St. Fabien		20 15	9 15
170	Bic	14 28	20 33	9 15
176	Sacre Coeur		20 54	9 49
180	Rilmouski	14 52	21 14	10 31
185	St. Anaclet and Father Point		*21 28	*10 52
190	Ste. Luce	15 14	21 37	11 05
198	Ste. Flavie	{ A 15 14 D 15 35	*21 47	11 20
203	St. Octave		21 58	11 35
207	Little Metis	*15 54	22 15	11 35
212	Bernier's		22 15	12 00
220	St. Moise		24 15	12 20
227	Sayabec		24 38	12 38
234	Cedar Hall	*16 50	24 54	12 52
242	Amqui		1 12	13 08
250	Salmon Lake		1 45	13 35
256	Causapsal	*17 35	2 15	14 00
262	Pleasant Beach		2 42	14 24
269	Assametquaghan		3 15	14 51
281	Mill Stream		3 46	15 17
290	Metapedia	18 43	4 10	15 38
294	Flat Lands		4 36	16 00
298	Moffatt's		5 05	16 24
303	Campbellton	{ A 19 15	5 50	17 02
			6 48	17 36
			7 00	17 48
			7 13	18 02
			7 30	18 20

Freight.

Trains leaving Montreal at 7.55 o'clock and Levis at 14.20 o'clock will run through to Little Metis on Saturdays, returning will leave Little Metis at 3.30 o'clock on Monday morning.

INTERCOLONIAL RAILWAY.

GOING EAST.

Trains from Quebec for Halifax and St. John.

Miles	STATIONS.	Through Express.	Freight.	Accom.
303	Campbellton B	19 25	8 00	5 20
312	Dalhousie Junct A	19 41	8 34	5 30
0	Belmonte Jet ... B	19 45	6 05
7	Dalhousie A	20 05	6 25
312	Dalhousie Junction, ... D	19 41	8 34	6 00
316	Eel River	*19 50	8 50	6 11
322	Charlo	*20 00	9 10	6 26
328	New Mills	*20 10	9 31	6 42
338	Jacquet River	*20 28	10 09	7 08
346	Belledune	10 41	7 31
355	Petite Roche	*21 00	11 11	7 53
366	Bathurst	21 20	12 05	8 24
371	Gloucester Junct	12 24	8 37
379	Red Pine	12 53	8 58
389	Barbigoque	13 30	9 25
401	Beaver Brook	14 11	9 55
410	Newcastle	22 45	15 15	10 35
414	Derby Junct.	22 51	15 28	10 44
416	Chatham Junction	22 56	15 55	10 51
420	Barnaby River	16 10	11 00
432	Rogersville	*23 25	16 56	11 31
443	Kent Junction	17 40	12 00
452	Harcourt	24 00	18 25	†12 25
457	Adamsville	*18 48	12 45
461	Coal Branch	19 00	*13 01
469	Canaan	*24 32	19 35	13 11
481	Berry's Mills	*24 53	20 20	13 36
488	Moncton (D. R.)	1 05	20 45	14 10
0	Moncton D	1 15	14 55
577	St. John	3 55	18 30
488	Moncton D	1 20
496	Painsec Junction
500	Meadow Brook
507	Memramcook	*1 57
509	College Bridge	*2 00
512	Rockland
515	Dorchester	2 11
526	Sackville	2 33
530	Aulac
536	Amherst (Din.) { A
	R'm) { D	2 53
541	Nappan	*3 01
544	Maccan	*3 08
548	Athol	*3 15
553	Spring Hill Junct.	3 30
560	Salt Springs	*3 42
566	Oxford Junct.	3 54
570	Thomson	*4 01
577	Greenville	*4 15
583	Wentworth	*4 26
595	Londonderry	4 49
601	Debert	*4 59
603	Belmont	*5 06
612	Truro (Din.) { A	5 20
	R'm) { D	5 30
634	Shubenacadie	6 21
660	Windsor Junct.	7 23
665	Bedford	7 36
670	Rockingham	7 49
674	Halifax	8 00

*Trains stop only when signalled or when there are passengers to set down.

† 20 minutes for dinner.

00

ht.

30

50

06

18

57

39

06

30

53

24

54

45

18

30

45

05

15

05

15

59

03

15

30

48

05

20

32

42

51

59

12

30

45

08

16

30

42

51

05

23

32

46

50

00

08

15

32

45

53

05

13

30

49

53

00

.....

iere du

No. 50

up via

es, via

INTERCOLONIAL RAILWAY.

TRAINS BETWEEN OXFORD JUNC. AND PICTOU.

READ Accom	DOWN Express	Miles.	STATIONS.	READ Express	UP Acc'm.
6 00	14 00	0	Dep...Oxford Junc...Arr.	11 00	18 35
6 08	14 06	3Oxford.....	10 55	18 25
6 32	14 26	11Conn's Mills.....	10 35	17 55
6 45	14 36	15	A....Pugwash Junc. D	10 25	17 40
7 00	14 50	21	A.....Pugwash.....A	10 08	17 15
7 25	15 06	15	D....Pugwash Junc. A	9 55	17 00
*7 37	*15 16	19Hendersons.....	*9 44	*16 45
7 47	15 24	23Wallace.....	9 36	16 34
*8 00	*15 34	27Ross Road.....	*9 26	*16 19
8 22	15 52	35Tatamagouche.....	9 07	15 52
8 51	16 08	42Denmark.....	8 51	15 16
9 08	16 21	47River John.....	8 38	14 59
9 32	16 40	55Meadowville.....	8 19	14 32
9 47	16 53	60Scotsburn.....	8 07	14 15
10 01	17 05	65Scotch Hill.....	7 55	13 59
10 08	17 10	67Brown's Point.....	7 50	13 50
10 15	17 15	69	Arr.....Pictou.....Dep	7 45	13 45

Trains will leave Pugwash at 7.05, 10.11, 14.53, 17.20 o'clock to make connection at Pugwash Junction with trains for Pictou and Oxford Junction.

Trains leaving Pictou at 7.45 o'clock, and Oxford Junction at 14.00 o'clock, make connection at Oxford Junction with Day Express Trains to and from Halifax and St. John.

Train leaving Pictou at 13.45 o'clock connects with Morning Express from Halifax, and with No. 9 Through Express at Oxford Junction.

CONDENSED THROUGH TIME TABLE.

Intercolonial Railway Points to Montreal, Ottawa and Toronto. (VIA ST. JOHN.)

Halifax.....	Dep.	18 40
Truro.....	"	20 50
Amherst.....	"	23 23
Moncton.....	"	1 15
St. John.....	Arr.	3 55
St. John.....	Dep.	4 25

ARRIVING AT

Montreal.....	20 20
Ottawa.....	1 25
Toronto.....	7 55

Toronto, Ottawa and Montreal to Intercolonial Railway Points. (VIA ST. JOHN.)

Toronto.....	Dep.	8 45
Ottawa.....	"	16 40
Montreal.....	"	20 40
St. John.....	Arr.	12 50
St. John.....	Dep.	13 00

ARRIVING AT

Moncton.....	15 45
Amherst.....	17 40
Truro.....	20 15
Halifax.....	22 10

INTERCOLONIAL RAILWAY.

CONDENSED THROUGH TIME TABLE.

Intercolonial Railway Points to Quebec,
Montreal, Ottawa and Toronto.

Sydney, C. B.....	Dep.	9 55
Mulgrave	"	14 55
Pictou	"	17 45
New Glasgow.....	"	18 25
Halifax.....	"	18 40
Truro (Dining Room).....	"	20 50
Amherst	"	23 23
St. John	"	22 10
Moncton (Lunch Room).....	"	1 15
Newcastle	"	3 25
Bathurst	"	4 32
Dalhousie	"	5 30
Campbellton	"	6 25
Ste. Flavie.....	"	9 40	4 15
Trois Pistoles (Dining Room).....	"	11 40	6 20
Riviere du Loup.....	"	12 40	7 30
Levis (Dining Room)	Arr.	16 00	12 00
Levis, Grand Trunk Railway	Dep.	16 25	12 25
Quebec, Canadian Pacific Railway.....	"	22 30	14 50

ARRIVING AT

Montreal, Grand Trunk Railway.....	22 00	19 30
" Canadian Pacific Railway.....	6 30	20 05
Ottawa, Canada Atlantic Railway.....	12 30	12 30
" Canadian Pacific Railway.....	1 25	1 25
Toronto, Grand Trunk Railway.....	7 15
" Canadian Pacific Railway.....	7 55

Toronto, Ottawa, Montreal and Quebec to Intercolonial Railway Points.

Toronto, Canadian Pacific Railway.....	Dep.	8 45
" Grand Trunk Railway.....	"	9 00	2 30
Ottawa, Canada Atlantic Railway	"	17 00	17 00
" Canadian Pacific Railway.....	"	16 40	16 40
Montreal, Grand Trunk Railway.....	"	23 15	7 55
" Canadian Pacific Railway.....	"	22 30	8 10
Levis, Grand Trunk Railway.....	Arr.	8 00	14 00
Quebec, Canadian Pacific Railway.....	"	6 30	13 15
Levis, Intercolonial Railway.....	Dep.	8 30	14 20

ARRIVING AT

Riviere du Loup	11 45	18 45
Trois Pistoles (Dining Room).....	13 05	19 55
Ste. Flavie.....	15 30	22 15
Campbellton	19 15
Dalhousie	20 05
Bathurst	21 20
Newcastle	22 45
Moncton (Lunch Room).....	1 00
Amherst	2 53
St. John.....	3 55
Truro (Dining Room).....	5 20
New Glasgow.....	11 15
Pictou	11 45
Halifax	8 00
Mulgrave.....	14 50
Sydney, C.B.....	19 55

Y.

ifax

9 55
 14 55
 16 28
 6 00
 6 45
 6 45
 9 25
 12 45
 14 55
 18 30
 20 30
 6 50
 12 30
 16 15
 18 25
 18 00
 23 00
 17 00
 16 41
 17 30
 23 00

INTERCOLONIAL RAILWAY.

NEW AND ELEGANT Buffet, Sleeping and Day Cars.

RUN ON THROUGH EXPRESS TRAINS BETWEEN
HALIFAX, ST. JOHN, QUEBEC & MONTREAL,
 Also, Between MONTREAL and STE. FLAVIE.

SLEEPING CARS leave Halifax and Montreal daily, (Sunday excepted) and run through between these points without change.

To accommodate through and local travel north of Montreal a Sleeping Car will leave St. John on through Express at 22.10 o'clock for Metapedia; returning leaving Metapedia at 18.45 o'clock for St. John. Through Passengers to and from Quebec and Montreal will be transferred to through cars from and to St. John at Metapedia.

Through Sleeping Cars will be run nightly, (Sundays excepted), between St. John and Halifax, on Express Trains leaving Halifax at 18.40 o'clock, and St. John at 22.10 o'clock

Through Parlor Car will be attached to trains leaving Montreal at 7.55 o'clock and St. Flavie at 4.15 o'clock, on Saturdays Parlor Car will run to Little Metis, returning from there Monday Mornings at 3.30 o'clock.

SLEEPING CAR PASSENGERS ON THROUGH TRAINS FROM HALIFAX AND QUEBEC CAN OCCUPY SLEEPERS AT ST. JOHN STATION UNTIL 7 O'CLOCK ON THE MORNING OF ARRIVAL.

Through Sleeping Cars run on Express Trains between Halifax, St. John and Montreal, leaving Halifax daily (except Sundays), and Montreal daily (except Saturdays), and run through between these points via St. John without change. West bound passengers leaving Halifax on Saturdays remain over at St. John till Monday morning.

NEW AND ELEGANT PARLOR CARS

RUN ON DAY EXPRESS TRAINS BETWEEN
SAINT JOHN and HALIFAX,
 and between Halifax and Mulgrave, and Pt. Tupper and Sydney, C. B.

Sleeping Car Tickets are on sale at the undermentioned Agencies and Offices of this Railway:

MONTREAL—By G. W. ROBINSON, 136½ St. James St., (Opposite St. Lawrence Hall), and at Pullman Ticket Office, Bonaventure Depot.

QUEBEC—By T. D. SHIPMAN, 32 St. Louis Street.

HALIFAX—By C. J. CARTER, 132 Hollis Street and at Railway Depot Ticket Office.

ST. JOHN—By GEO. PHILIPS, 97 Prince William Street, and Railway Depot Ticket Office.

Sleeping Car Tickets via St. John are on sale at the offices of the Canadian Pacific Railway at Halifax and Montreal.

QUEBEC AND LEVIS FERRY.

Steamers of the Ferry connect with Intercolonial Railway as follows:—

A.M.	A.M.
8.00 Mail to Halifax	5.30 Mixed from R. du Loup.
9.15 Accommodation to R. du Loup	P.M.
P.M.	12.15 Mail from Campbellton.
2.00 Mail to Campbellton	4.15 Mail from Halifax.
5.30 Accommodation to R. du Loup.	6.15 Accommodation from R. du Loup.

INTERCOLONIAL RAILWAY.

RAIL CONNECTIONS.

Trains leaving Halifax at 18.40 o'clock and St. John at 22 10 o'clock arrive at Levis, Quebec, at 16.00 o'clock and Montreal at 22.00 o'clock next day, and Ottawa at 12.30, Toronto at 7.15 following morning where close connections are made for all Western Canada and United States points.

Connection is also made at Quebec (by ferry) with Canadian Pacific Railway for Montreal, Ottawa, Toronto, and all C. P. Railway and U. S. Western Points.

Express Trains from Halifax and St. John for Levis (Quebec) and Montreal, Saturdays, will run to destination Sunday. Express leaving Montreal at 23.15 o'clock Saturdays, will remain over Sunday at Levis.

Train leaving Halifax at 18.40 o'clock arrives at St. John at 3.55 o'clock and runs through to Montreal, arriving there at 20.20 o'clock same evening. Ottawa 1 25 o'clock and Toronto 7.55 the following morning. West bound passengers leaving Halifax on Saturdays remain over at St. John till Monday morning.

Passengers for Pictou and the East will leave Halifax at 6.45 by through Express Train, and change cars at Truro.

Express Train from Pictou at 17.45 o'clock connects at Truro with Express for Halifax at 20.25 and with Express for St. John and Quebec at 20.50.

The 6.00 Accommodation Train from Pictou connects at Truro with Express Trains for St. John and Halifax.

Trains of the Kent Northern Railway connect at Kent Junction with Accommodation Trains leaving Campbellton at 5.25 and Moncton at 10.20

Trains of the Cumberland Railway Company connect at Spring Hill Junction, to and from Parrsboro, with Day Express Trains to and from Halifax and St. John.

Trains of the Salisbury and Harvey Railway connect at Salisbury station with Accommodation Train from Moncton at 8.15 and with Day Express from St. John at 7.05.

Trains of the Elgin and Havelock Branch Railway connect at Petiteodiac with Accommodation from Moncton at 8.15 for St. John and with No. 2 Day Express from St. John, also with Accommodation leaving St. John at 10.30.

At St. John Station with Trains of the Canadian Pacific Railway for Fredericton, Woodstock, Houlton, St. Andrews, St. Stephen, Montreal, Ottawa, Toronto, and all Western Canada and U. S. Points; also with "New England All-Rail Line" for Bangor, Portland, Boston and New York.

At Windsor Junction with Trains of the Windsor and Annapolis Railway for Windsor, Wolfville, Kentville, and all points in the Annapolis Valley.

At Sackville Day Express leaving St. John at 7.00 o'clock connects with N. B. and P. E. Island Railway for Cape Tormentine.

At Chatham Junction with Trains of the Canada Eastern Railway for Chatham and Fredericton.

At Maccan Trains of the Joggins Railway connect with Day Express Trains from St. John and Halifax.

At Hampton and Norton with Central Railway of New Brunswick.

At Riviere du Loup with Trains of the Temiscouata Railway.

At Gloucester Junction with the Caraquet Railway.

At Levis Day Express from Halifax connects with Trains of the Quebec Central Railway for Sherbrooke and Boston.

INTERCOLONIAL RAILWAY.

CONNECTIONS FOR PRINCE EDWARD ISLAND.

Day Express leaving Halifax at 6.45 o'clock connects at Truro at 11.30 with Local Express for Pictou, where connection is made daily (except Sundays) with Steamers of the Charlottetown Steam Navigation Co. for Charlottetown.

Day Express leaving St. John at 7.00 o'clock connects at Painsec Junction with train for Point du Chene, where connection is made daily, (Sunday excepted) with Steamers of the Charlottetown Steam Navigation Co., to and from Summerside and Charlottetown and all P. E. I. Railway points.

Connections are made at Painsec to and from Point du Chene and Shediac with Through Day Express Trains to and from St. John and Halifax.

There is no connection made at Painsec to or from Point du Chene with Night Express Trains.

CONNECTIONS FOR EASTERN NOVA SCOTIA & CAPE BRETON ISLAND.

Express Train leaving Halifax at 6.45 connects at Truro with Local Express for Pictou, Port Mulgrave and Sydney, C.B.

Steamers to and from Baddeck connect with Express Trains morning and evening at Grand Narrows.

Passengers leaving Sydney at 9.55 o'clock arrive in Halifax at 22.10 same evening, and in St. John 3.55 following morning, connecting at St. John with trains of the "All Rail Line," and with International Steamers for Boston and all points in Eastern United States, New York, &c.

At Mulgrave, (during navigation, weather permitting) with Stmr. "Rimouski," on Mondays and Fridays, for Arichat and Canso, on Wednesdays and Saturdays for Guysboro, and on Tuesdays and Thursdays for Port Hood.

At Antigonish, Stage from Sherbrooke connects daily with Express Trains to and from New Glasgow and Halifax.

At Heatherton, Stage from Guysboro connects daily with Express trains to and from New Glasgow and Halifax.

At Hastings, Stage connects daily to and from Port Hood and Mabou with Ferry Steamer, running between Mulgrave and Hastings.

≡ FIRST-CLASS * REFRESHMENT * ROOMS ≡

—AT—

Truro, Amherst, Moncton, St. John, Trois
Pistoles and Levis.

AND AMPLE TIME ALLOWED FOR MEALS.

Baggage Checked to all Points in Canada and
Principal Points in United States.

INTERCOLONIAL RAILWAY.

Connections with Richelieu & Ontario Nav. Co.'s Steamers.

At Levis, Steamer from Montreal connects with Trains for Riv. du Loup, Cacouna, Dalhousie, Halifax and St. John. Express Trains from Halifax and St. John connect by ferry at Quebec with steamer for Montreal.

Connections for Gaspé and other Baie des Chaleur points.

Passengers for Gaspé and other Baie des Chaleur points, from Quebec and the West, will leave Levis on Tuesdays and Fridays by Express Train at 8.30 o'clock.
Express Trains from Halifax at 18.40 Mondays and Thursdays, and from St. John on Tuesday and Friday mornings, at 7.00 o'clock, will make connection at Dalhousie for Gaspé.

Connections for the Magdalen Islands.

At Pictou with S.S. "Saint Olaf" on Mondays, for Magdalen Islands, (calling at Georgetown and Souris, P. E. I.) for Cheticamp, C.B., calling both going and returning, off Port Hood, Mabou Mouth and Margaree, every Wednesday after arrival of the last train from Halifax.

Steamboat Connections for Portland, Boston and New York.

At Halifax with Steamers "Halifax" and "Olivette" for Boston direct every Tuesday and Thursday at 8.00, and Saturday at 22.00 o'clock.

At St. John with steamers of the "International Steamship Co." leaving St. John on Mondays, Wednesdays, Thursdays and Saturdays for Eastport and Boston direct, and on Tuesdays and Fridays for Eastport and Portland, and via Boston and Maine R.R. from Portland for Boston. Connections at Boston for New York by Rail and Steamers.

Also on Tuesday afternoons with steamers of the Mallory Line for New York.

STAGE CONNECTIONS.

At Shubenscadie with Stages daily for Maitland, Gay's River and Musquodobit, and on Saturdays for Kennetcook and Noel.

At Hopewell with McDaniel's Stage Line for Springville, Bridgeville, St. Paul, Upper and Lower Caledonia, Smithfield and Meirose.

At Truro, daily, with stages for Clifton, Black Rock and Maitland, and tri-weekly for Earltown, and W. Branch River John.

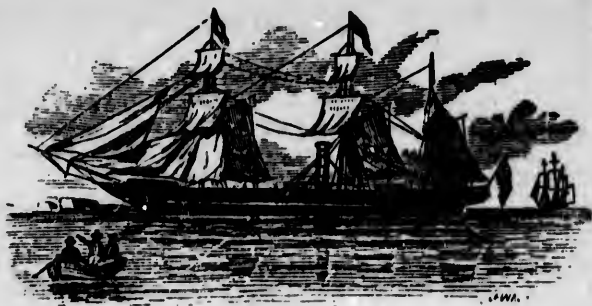
At Londonderry with stages for Acadia Iron Mines, Great Village, Economy and Five Islands.

At Shediac with Stages to and from Cocagne and Buctouche.

At Harcourt with Stages for Richibucto, Kingston and other places on North Shore.

At Newcastle with tri-weekly Stage for Red Bank, Whitneyville, Derby, Blissfield, Doaktown and Fredericton.

INTERCOLONIAL RAILWAY.



Steamship Connections.

Canadian European Mail & Passenger Route

Close connections are made at Rimouski (weekly) with **ROYAL MAIL STEAMERS** of the **ALLAN LINE** to and from Liverpool, making **THE SHORTEST OCEAN PASSAGE** between

AMERICA AND EUROPE.

Passengers from Nova Scotia, New Brunswick and P. E. Island for Great Britain or the Continent, taking Quebec Express, leaving St. John and Halifax, P. M. Saturdays, will join outward Mail Steamers at Rimouski, P. M., Sundays.

Passengers from Montreal or the West leaving Montreal by Mail Train, Sunday morning, will join outward Mail Steamer at Rimouski same evening.

Mail Train will leave Levis Station at 14.35 o'clock and stop at St. Thomas, Ste. Anne, St. Paschal, Riv. du Loup, Cacouna and Trois Pistoles, arriving at Rimouski at 20.00 o'clock.

Fast Special Trains leave Rimouski on arrival of inward Mail Steamers with Passengers and Mails for Quebec, Montreal, Ottawa, Toronto, Western Canada and United States; and when regular trains do not connect, for St. John and Halifax.

At Halifax (fortnightly) with **ALLAN LINE STEAMERS** to and from Newfoundland, Queenstown and Liverpool; with Furness Line for London; and with Str. St. Pierre for St. Pierre Miq.

At Halifax with Steamers for Bermuda, Jamaica, St. Thomas, St. Kitts, Antigua, Guadeloupe, Dominica, Martinique, St. Lucia, Barbadoes, Trinidad and Demerara.

The Intercolonial Railway is unequalled for comfort and safety in its Passenger Train equipment.

Through Express Trains are brilliantly lighted by Electricity and heated by Steam.

The Westinghouse Automatic Air Brake is on all Passenger Train Cars and Engines.

INTERCOLONIAL RAILWAY.

Summer Tourist Travel.

The INTERCOLONIAL traverses for TWO HUNDRED MILES the south shore of the MAJESTIC ST. LAWRENCE, thence through the famous lake, mountain and valley region of the METAPEDIA and RESTIGOUCHE RIVERS, unequalled for their

➤ MAGNIFICENT + SCENERY ➤

and along the beautiful and picturesque shores of the BAIE DES CHALEURS and GULF of ST. LAWRENCE, abounding in exhaustless Salmon and Trout streams.

ALL THE POPULAR SUMMER SEA-BATHING AND HEALTH-RESTORING RESORTS of Canada ARE ALONG THIS LINE.

NOTABLE AMONG WHICH ARE

Rivière du Loup, Cacouna, Bic, Metis, Campbellton, Dalhousie, Bathurst, Pugwash, Tatamagouche, St. John, Shediac, Halifax, Baddeck & Sydney, C.B.

THROUGH TICKETS

FOR

Quebec, Montreal, Ottawa, Toronto, Winnipeg, The Canadian North West and British Columbia,

Also to all Principal Points in the

United States, Prince Edward Island and Cape Breton,

CAN BE OBTAINED FROM

C. J. CARTEN, - - - - - 132 Hollis Street, Halifax, N.S.
GEORGE PHILPS, - - - - - 97 Prince William Street, St. John, N.B.
E. JOHNSON, - - - - - Chatham, N.B.
D. R. McDONALD, - - - - - 49 Dalhousie Street, Quebec.
T. D. SHIPMAN, - - - - - 32 St. Louis Street, Upper Town, Quebec.
GEO. W. ROBINSON, Eastern Freight and Passenger Agent, 136½ St. James Street (opposite St. Lawrence Hall), Montreal
N. WEATHERSTON, Western Freight and Passenger Agent, 93 York Street, Rossin House Block, Toronto.
E. KING, - - - - - 27 Spark Street, Ottawa.
GEO. SHEA, - - - - - St. John's Newfoundland.

AND AT THE UNDERMENTIONED STATIONS ;

Halifax, St. John, Windsor Junction, Shubenacadie, Truro, New Glasgow, Pictou, Londonderry, Spring Hill, Amherst, Sackville, Dorchester, Point DuChene, Shediac, Moncton, Sussex, Harcourt, Newcastle, Bathurst, Dalhousie, Campbellton, Little Metis, Ste. Flavie, Rimouski, Trois Pistoles, Riviere du Loup, Pugwash, Mulgrave, Sydney and North Sydney, C.B.

INTERCOLONIAL RAILWAY.

IN MAKING UP YOUR SUMMER TOUR BE SURE
YOU INCLUDE THE MAGNIFICENT

SEASIDE, + + SCENERY
RIVER, LAKE
AND MOUNTAIN

* OF THE *

INTERCOLONIAL

(.....) IN YOUR TRIP!

Don't fail to include the new and picturesque Rail Route
through Cape Breton Island,

Skirting the Beautiful Bras d'Or Lakes,

IN YOUR

SUMMER TOUR.

ROUND TRIP TOURISTS' TICKETS,

Summer Excursion 

≡ AND ≡

 Sea Bathing Tickets,

Good for passage between first of June and last of October,

FOR SALE AT

All Agencies and at Principal Stations of the Inter-
colonial, Grand Trunk and Canadian Pacific
Railways, and by City and Tourist
Agents in Canada and
United States.

Prince Edward Island Railway.

SUMMER TIME TABLE.

Accom.	Express.	Miles	STATIONS.	Express.	Accom.
P. M.	A. M.			P. M.	A. M.
3 00	6 00	0	D.....Charlottetown... A	6 25	1 00
3 20	6 14	5	.. Royalty Junction....	6 10	12 40
4 07	6 48	17North Wiltshire.....	5 36	11 57
4 21	6 58	20Hunter River.....	5 25	11 44
5 09	7 30	31Emerald Junction....	4 54	11 04
5 42	7 53	40Kensington.....	4 29	10 31
6 15	8 15	49	A { ...Summerside .. { D	4 05	10 00
6 30	8 30	49	D { .. { A	3 40	9 55
7 54	9 35	70Port Hill.....	2 37	8 16
9 04	10 30	89O'Leary.....	1 46	7 00
10 10	11 14	103Alberton.....	1 05	6 00
11 00	11 55	117	A.....Tignish.....D	12 25	5 00
				P. M.	A. M.
A. M.	P. M.				
6 30	5 50	0	D.....Charlottetown.... A	9 20	3 40
8 20	7 10	22	...Mt. Stewart Junction..	8 15	2 10
9 00	7 41	31 Morell	7 42	1 25
9 30	8 05	38St. Peter's	7 20	12 58
10 14	8 41	50Bear River.....	6 45	12 14
10 55	9 15	60	A.....Souris.....D	6 15	11 35
				A. M.	A. M.
A. M.	P. M.				
6 30	5 50	0	D.....Charlottetown.... A	9 20	3 40
8 25	7 10	22Mt. Stewart Junc ...	8 10	2 00
9 38	8 03	40 Cardigan.....	7 17	12 52
10 00	8 20	46	A.....Georgetown.....D	7 00	12 30
				A. M.	A. M.

TRAINS RUN ON EASTERN STANDARD TIME.

Tourists desirous of visiting the Western portion of the Island can leave Charlottetown at 6 a.m., arrive at Tignish 11.55 a.m., returning to Charlottetown same day, arriving 6.25 p.m.

Passengers for St. John, N.B., Montreal, Boston, New York, and other points North and West, leave Charlottetown at 6 a.m., and arrive Summerside at 8.15 a.m., connecting there with S. Nav. Co.'s Steamers for Pointe du Chene, thence via I. C. Railway.

Passengers leaving Charlottetown at 6 a.m., reach St. John, N.B., same evening, and Boston following afternoon.

From Charlottetown, S. Nav. Co.'s Steamers leave for Pictou daily. Passengers arrive Halifax at 18.20 o'clock same day.

Boating, deep sea and river fishing, driving through the delightful variety of wooded and richly cultivated country, with charming sea views, shooting on meadow and marsh, and bathing, both in the quiet waters of the harbor and in the white rolling surf on the sand hills, are among the recreations of P. E. Island summer resorts.

y.

ccom.

A. M.

1 00

2 40

1 57

1 44

1 04

0 31

0 00

9 55

3 16

7 00

5 00

5 00

A. M.

3 40

2 10

1 25

2 58

2 14

1 35

A. M.

3 40

2 00

2 52

2 30

A. M.

the
nish
ving

New
own
ting
ence

St.
n.
tou
day.
de-
with
and
the
ons

MEMORANDA.

A large rectangular area with a double-line border, containing 20 horizontal dotted lines for writing.

MEMORANDA.

A series of horizontal dotted lines for writing, contained within a rectangular border.

MEMORANDA.

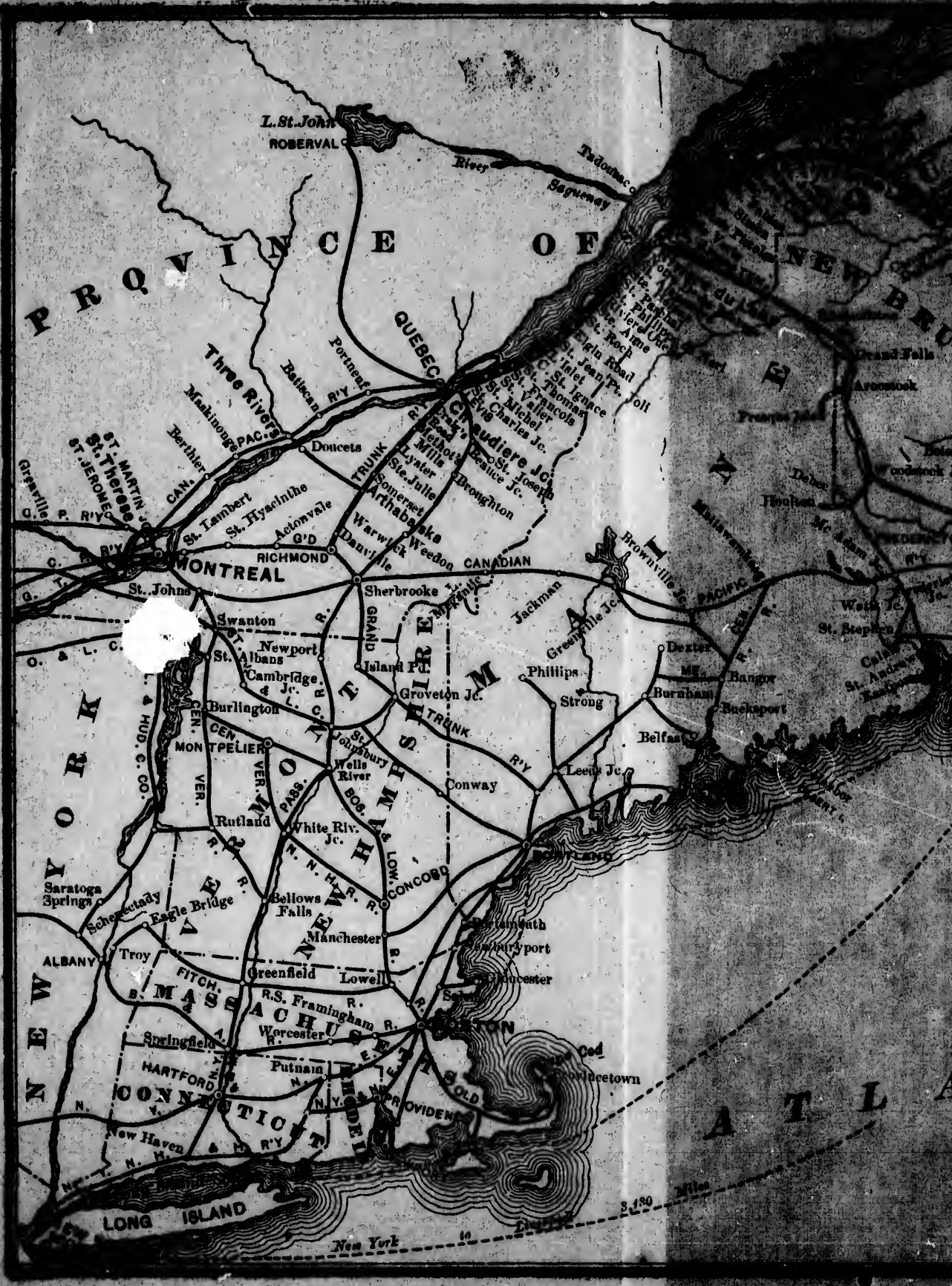
A series of horizontal dotted lines for writing, spanning the width of the page.

This image shows a blank page from a notebook. The page is white and features a series of horizontal lines for writing. At the top, there is a white rectangular tab. The main writing area is enclosed in a double-line border. Within this border, there are 18 horizontal lines. Each line consists of a solid top line, a dotted midline, and a solid bottom line, providing a guide for letter height and placement. The paper is mounted on a dark grey or black background, and the right edge shows the binding of the notebook.



**MAP OF THE
 COLONIAL RAILWAY
 AND ITS
 CONNECTIONS.**

Mount Allison
 University
 Library



PROVINCE OF QUEBEC

NEW YORK

NEW HAMPSHIRE

VERMONT

MASSACHUSETTS

CONNECTICUT

LONG ISLAND

L. St. John ROBERVAL

QUEBEC

MONTREAL

SHERRILL

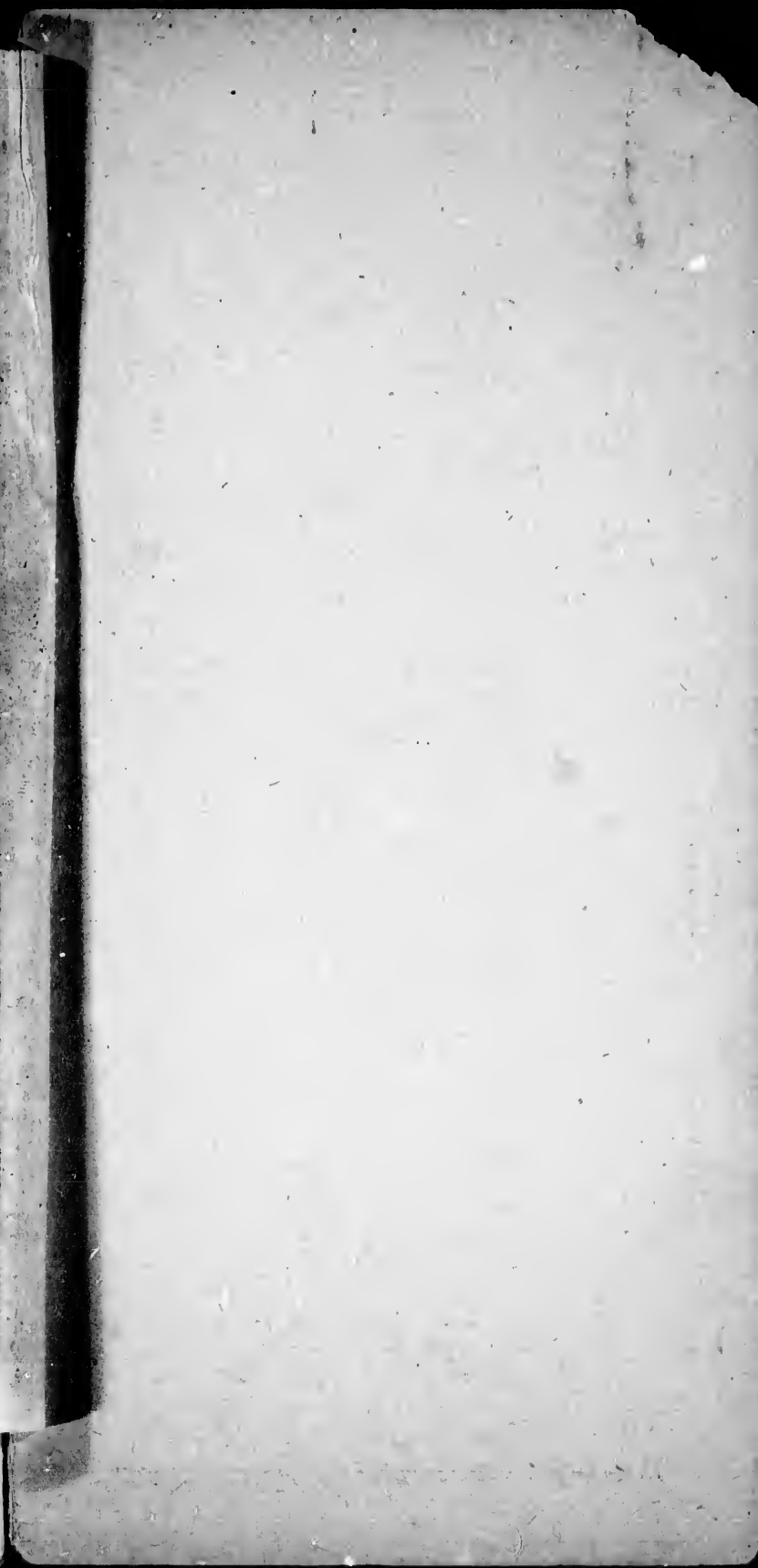
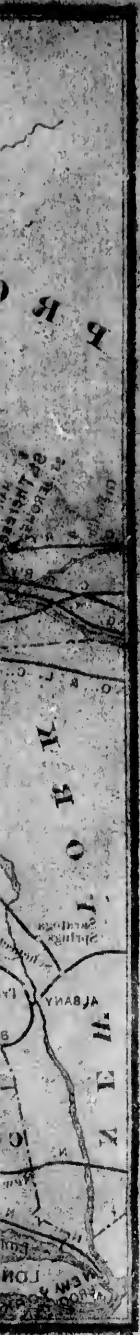
CONCORD

SPRINGFIELD

NEW HAVEN

New York

3,180 Miles



Intercolonial
Railway
of Canada

THE DIRECT ROUTE
TO THE
Famous Seaside Resorts
OF THE
LOWER ST. LAWRENCE
AND THE
MARITIME PROVINCES

PASSENGER
TIME TABLE

Summer of 1892.

Railway Office, Moncton, July 18th, 1892.

