

**CIHM  
Microfiche  
Series  
(Monographs)**

**ICMH  
Collection de  
microfiches  
(monographies)**



**Canadian Institute for Historical Microreproductions / Institut canadien de microreproductions historiques**

**© 1996**

## Technical and Bibliographic Notes / Notes technique et bibliographiques

The Institute has attempted to obtain the best original copy available for filming. Features of this copy which may be bibliographically unique, which may alter any of the images in the reproduction, or which may significantly change the usual method of filming are checked below.

- Coloured covers / Couverture de couleur
- Covers damaged / Couverture endommagée
- Covers restored and/or laminated / Couverture restaurée et/ou pelliculée
- Cover title missing / Le titre de couverture manque
- Coloured maps / Cartes géographiques en couleur
- Coloured ink (i.e. other than blue or black) / Encre de couleur (i.e. autre que bleue ou noire)
- Coloured plates and/or illustrations / Planches et/ou illustrations en couleur
- Bound with other material / Relié avec d'autres documents
- Only edition available / Seule édition disponible
- Tight binding may cause shadows or distortion along interior margin / La reliure serrée peut causer de l'ombre ou de la distorsion le long de la marge intérieure.
- Blank leaves added during restorations may appear within the text. Whenever possible, these have been omitted from filming / Il se peut que certaines pages blanches ajoutées lors d'une restauration apparaissent dans le texte, mais, lorsque cela était possible, ces pages n'ont pas été filmées.
- Additional comments / Commentaires supplémentaires:

L'Institut a microfilmé le meilleur exemplaire qu'il lui a été possible de se procurer. Les détails de cet exemplaire qui sont peut-être uniques du point de vue bibliographique, qui peuvent modifier une image reproduite, ou qui peuvent exiger une modifications dans la méthode normale de filmage sont indiqués ci-dessous.

- Coloured pages / Pages de couleur
- Pages damaged / Pages endommagées
- Pages restored and/or laminated / Pages restaurées et/ou pelliculées
- Pages discoloured, stained or foxed / Pages décolorées, tachetées ou piquées
- Pages detached / Pages détachées
- Showthrough / Transparence
- Quality of print varies / Qualité inégale de l'impression
- Includes supplementary material / Comprend du matériel supplémentaire
- Pages wholly or partially obscured by errata slips, tissues, etc., have been refilmed to ensure the best possible image / Les pages totalement ou partiellement obscurcies par un feuillet d'errata, une pelure, etc., ont été filmées à nouveau de façon à obtenir la meilleure image possible.
- Opposing pages with varying colouration or discolourations are filmed twice to ensure the best possible image / Les pages s'opposant ayant des colorations variables ou des décolorations sont filmées deux fois afin d'obtenir la meilleur image possible.

This item is filmed at the reduction ratio checked below /  
Ce document est filmé au taux de réduction indiqué ci-dessous.

10X	12X	14X	16X	18X	20X	22X	24X	26X	28X	30X	32X								

The copy filmed here has been reproduced thanks to the generosity of:

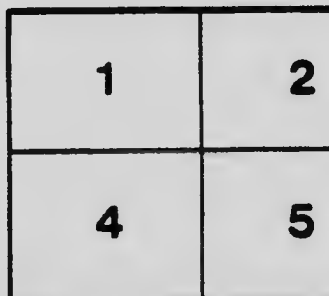
National Library of Canada

The images appearing here are the best quality possible considering the condition and legibility of the original copy and in keeping with the filming contract specifications.

Original copies in printed paper covers are filmed beginning with the front cover and ending on the last page with a printed or illustrated impression, or the back cover when appropriate. All other original copies are filmed beginning on the first page with a printed or illustrated impression, and ending on the last page with a printed or illustrated impression.

The last recorded frame on each microfiche shall contain the symbol  $\rightarrow$  (meaning "CONTINUED"), or the symbol  $\nabla$  (meaning "END"), whichever applies.

Maps, plates, charts, etc., may be filmed at different reduction ratios. Those too large to be entirely included in one exposure are filmed beginning in the upper left hand corner, left to right and top to bottom, as many frames as required. The following diagrams illustrate the method:



L'exemplaire filmé fut reproduit grâce à la générosité de:

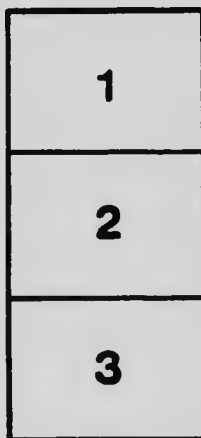
Bibliothèque nationale du Canada

Les images suivantes ont été reproduites avec le plus grand soin, compte tenu de la condition et de la netteté de l'exemplaire filmé, et en conformité avec les conditions du contrat de filmage.

Les exemplaires originaux dont la couverture en papier est imprimée sont filmés en commençant par le premier plat et en terminant soit par la dernière page qui comporte une empreinte d'impression ou d'illustration, soit par le second plat, selon le cas. Tous les autres exemplaires originaux sont filmés en commençant par le première page qui comporte une empreinte d'impression ou d'illustration et en terminant par la dernière page qui comporte une telle empreinte.

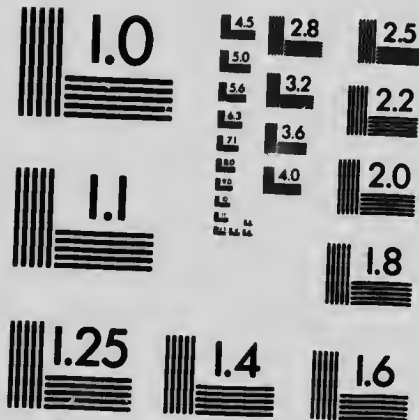
Un des symboles suivants apparaîtra sur la dernière image de chaque microfiche, selon le cas: le symbole  $\rightarrow$  signifie "A SUIVRE", le symbole  $\nabla$  signifie "FIN".

Les cartes, planches, tableaux, etc., peuvent être filmés à des taux de réduction différents. Lorsque le document est trop grand pour être reproduit en un seul cliché, il est filmé à partir de l'angle supérieur gauche, de gauche à droite, et de haut en bas, en prenant le nombre d'images nécessaire. Les diagrammes suivants illustrent la méthode.



# MICROCOPY RESOLUTION TEST CHART

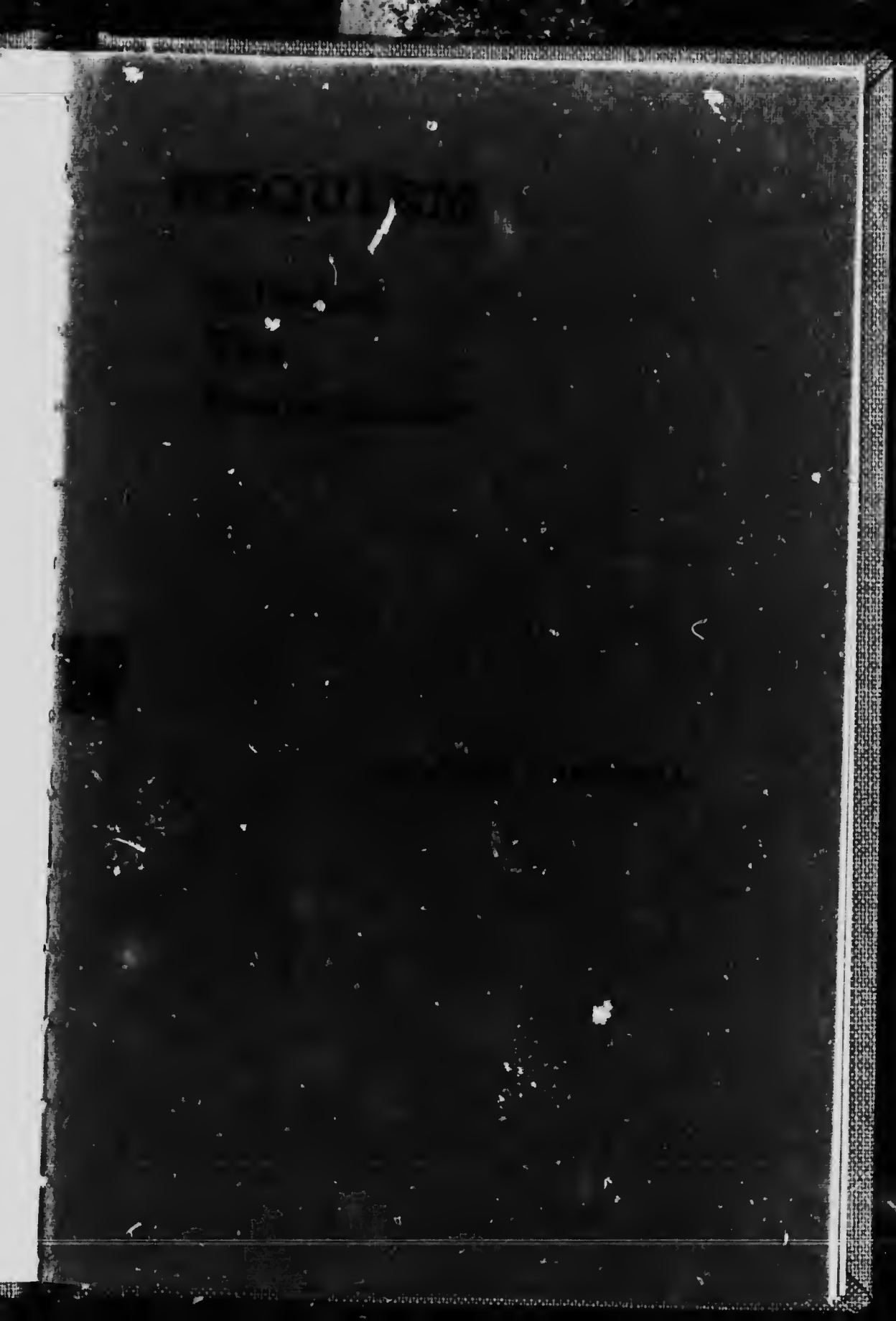
(ANSI and ISO TEST CHART No. 2)



**APPLIED IMAGE Inc**

1653 East Main Street  
Rochester, New York 14609 USA  
(716) 482 - 0300 - Phone  
(716) 288 - 5989 - Fax





146149

Edw

*Arce*

W



# REQUIEM.

Edward The Peacemaker.

Rev. M. Lammis Langford  
from his  
friends  
Wilfred Langford

WILFRED CAMPBELL.

## REQUIEM.

---

### Edward the Peacemaker.

With Earth's republics bowed in woe,  
And Europe's monarchs round his bier,  
And mighty pageant sad and slow,  
And solemn note of trumpet blown,  
And muttering drum and organ's moan,  
From duty, honour and renown,  
We lay our august Edward down.

Miles of millions down each street,  
Britannia's one huge heart-beat  
Of human grief; as rank on rank,  
In mighty marshalled mournful flow,  
Beside old Thames' storied bank,  
Where Earth's high kings in sorrow go;  
Passes the pageant of her woe.

Out round wide leagues of plangent surge,  
And looming coastlines huge and gray,  
Where Ocean moans eternal dirge,  
The moon and stars his torches dim;  
Great Edward's millions grieve and pray,  
And bow the head in woe for him,  
In those wide continents of his sway,  
O'er verges of the world's far rim.

## II.

Low lies his head this sad May morn,  
The saddest ever poet rhymed,  
Or brought the milkwhite to the thorn;  
Low lies his head, who monarch born  
To eminence he never climbed  
Through promises he ne'er fulfilled;  
Who never merited our scorn,  
Nor made him principles that chimed  
With what he deemed the public willed;  
Who never flattered men by lie,  
To hold in grasp a people's will;  
Nor flamed the torch of fancied ill,  
To voice the loud majority.

Who born to what he never sought,  
Ennobled all his kingly lot,  
Performed his duty in his place,  
True scion of his royal race,  
Took up in later life that crown  
From his great mother's brow laid down;  
And strove with patience, leal to all,  
To be a ruler in a day  
Of restless, democratic sway.

Who born to this; yet at his end  
Was loved more in spite of fault  
Than all earth's great 'neath heaven's vault  
Who from obscurity did ascend.  
Nor is there one 'mid earth's strong ones  
Would dare to cast a stone at him  
Who ever faced the foeman's guns,  
And at that fateful gateway grim,  
When his star sank in death's eclipse,  
Went out with "duty" on his lips.

### III.

His lowly subjects round his throne,  
Hold sorrow in their hearts and eyes  
For him the human and the wise,  
Who made their joys and woes his own ;  
Who with wide sympathy did span  
All fiercest gulfs of social hate,  
Till even foes of kingly state  
Revered the monarch in the man.  
In majesty we lay him down,  
With England's banner half-mast furled,  
'Mid all the sorrow of a world,  
In that great, ancient Royal town,  
Where England's splendid castle stands,  
Glory of all her storied lands,  
Moated by old Father Thames,  
Famed stream of thrones and diadems.

'Mid tolling slow of funeral bell,  
And far-off organ's mournful swell,  
And minute gun's low muttering ;  
This, England's latest, greatest King,  
Scion of a royal line,  
Half of earth and half divine,  
And heir of all its old renown,  
'Mid pageant sad we lay him down,  
In that dread chamber of the vast,  
To sleep with all her sceptred past,  
Those great of Britain's age of gold  
And all her splendid thrones of old,  
Who rest in death's felicity ;  
Wise Alfred ; Norman William ; he,  
Her Lion-heart of chivalry ;  
And those famed queens, still great in death,  
Victoria, Elizabeth !

Wilfred Campbell.



