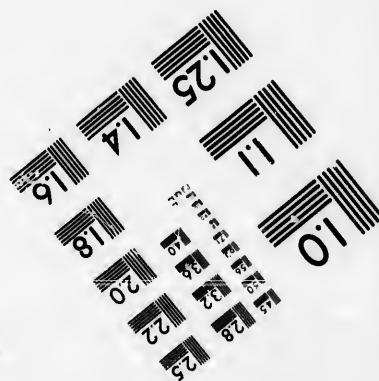
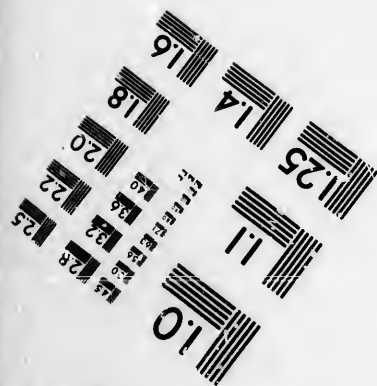
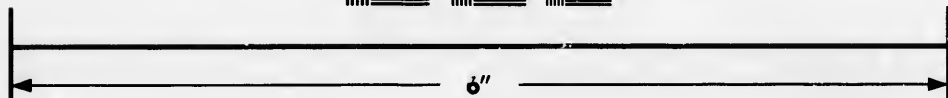
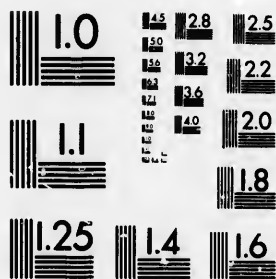


**IMAGE EVALUATION
TEST TARGET (MT-3)**



**Photographic
Sciences
Corporation**

23 WEST MAIN STREET
WEBSTER, N.Y. 14580
(716) 872-4503

**CIHM/ICMH
Microfiche
Series.**

**CIHM/ICMH
Collection de
microfiches.**



Canadian Institute for Historical Microreproductions / Institut canadien de microreproductions historiques

© 1985

Technical and Bibliographic Notes/Notes techniques et bibliographiques

The Institute has attempted to obtain the best original copy available for filming. Features of this copy which may be bibliographically unique, which may alter any of the images in the reproduction, or which may significantly change the usual method of filming, are checked below.

L'Institut a microfilmé le meilleur exemplaire qu'il lui a été possible de se procurer. Les détails de cet exemplaire qui sont peut-être uniques du point de vue bibliographique, qui peuvent modifier une image reproduite, ou qui peuvent exiger une modification dans la méthode normale de filmage sont indiqués ci-dessous.

- | | |
|--|--|
| <input type="checkbox"/> Coloured covers/
Couverture de couleur | <input type="checkbox"/> Coloured pages/
Pages de couleur |
| <input type="checkbox"/> Covers damaged/
Couverture endommagée | <input type="checkbox"/> Pages damaged/
Pages endommagées |
| <input type="checkbox"/> Covers restored and/or laminated/
Couverture restaurée et/ou pelliculée | <input type="checkbox"/> Pages restored and/or laminated/
Pages restaurées et/ou pelliculées |
| <input type="checkbox"/> Cover title missing/
Le titre de couverture manque | <input checked="" type="checkbox"/> Pages discoloured, stained or foxed/
Pages décolorées, tachetées ou piquées |
| <input type="checkbox"/> Coloured maps/
Cartes géographiques en couleur | <input type="checkbox"/> Pages detached/
Pages détachées |
| <input type="checkbox"/> Coloured ink (i.e. other than blue or black)/
Encre de couleur (i.e. autre que bleue ou noire) | <input checked="" type="checkbox"/> Showthrough/
Transparence |
| <input type="checkbox"/> Coloured plates and/or illustrations/
Planches et/ou illustrations en couleur | <input type="checkbox"/> Quality of print varies/
Qualité inégale de l'impression |
| <input checked="" type="checkbox"/> Bound with other material/
Relié avec d'autres documents | <input type="checkbox"/> Includes supplementary material/
Comprend du matériel supplémentaire |
| <input type="checkbox"/> Tight binding may cause shadows or distortion
along interior margin/
La reliure serrée peut causer de l'ombre ou de la
distorsion le long de la marge intérieure | <input type="checkbox"/> Only edition available/
Seule édition disponible |
| <input type="checkbox"/> Blank leaves added during restoration may
appear within the text. Whenever possible, these
have been omitted from filming/
Il se peut que certaines pages blanches ajoutées
lors d'une restauration apparaissent dans le texte,
mais, lorsque cela était possible, ces pages n'ont
pas été filmées. | <input type="checkbox"/> Pages wholly or partially obscured by errata
slips, tissues, etc., have been refilmed to
ensure the best possible image/
Les pages totalement ou partiellement
obscurcies par un feuillet d'errata, une pelure,
etc., ont été filmées à nouveau de façon à
obtenir la meilleure image possible. |
| <input checked="" type="checkbox"/> Additional comments:
Commentaires supplémentaires: | Pagination as follows : [2], [41]-47, [1], 45-47 p. |

This item is filmed at the reduction ratio checked below/
Ce document est filmé au taux de réduction indiqué ci-dessous.

10X	14X	18X	22X	26X	30X
<input type="checkbox"/>	<input type="checkbox"/>	<input type="checkbox"/>	<input checked="" type="checkbox"/>	<input type="checkbox"/>	<input type="checkbox"/>
12X	16X	20X	24X	28X	32X

The copy filmed here has been reproduced thanks to the generosity of:

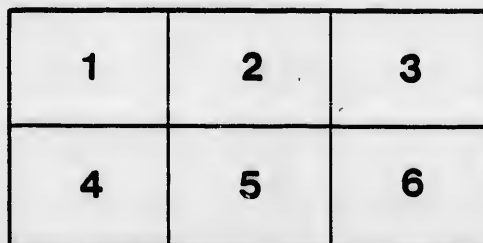
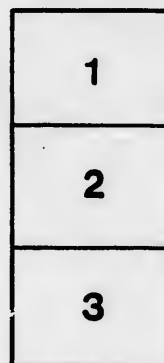
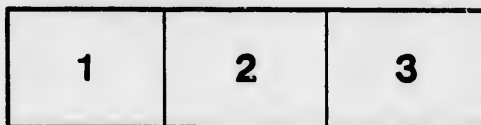
D. B. Weldon Library
University of Western Ontario
(Regional History Room)

The images appearing here are the best quality possible considering the condition and legibility of the original copy and in keeping with the filming contract specifications.

Original copies in printed paper covers are filmed beginning with the front cover and ending on the last page with a printed or illustrated impression, or the back cover when appropriate. All other original copies are filmed beginning on the first page with a printed or illustrated impression, and ending on the last page with a printed or illustrated impression.

The last recorded frame on each microfiche shell contain the symbol \rightarrow (meaning "CONTINUED"), or the symbol ∇ (meaning "END"), whichever applies.

Maps, plates, charts, etc., may be filmed at different reduction ratios. Those too large to be entirely included in one exposure are filmed beginning in the upper left hand corner, left to right and top to bottom, as many frames as required. The following diagrams illustrate the method:



L'exemplaire filmé fut reproduit grâce à la générosité de:

D. B. Weldon Library
University of Western Ontario
(Regional History Room)

Les images suivantes ont été reproduites avec le plus grand soin, compte tenu de la condition et de la netteté de l'exemplaire filmé, et en conformité avec les conditions du contrat de filmage.

Les exemplaires originaux dont la couverture en papier est imprimée sont filmés en commençant par le premier plat et en terminant soit par la dernière page qui comporte une empreinte d'impression ou d'illustration soit par la seconde plat, selon le cas. Tous les autres exemplaires originaux sont filmés en commençant par la première page qui comporte une empreinte d'impression ou d'illustration et en terminant par la dernière page qui comporte une telle empreinte.

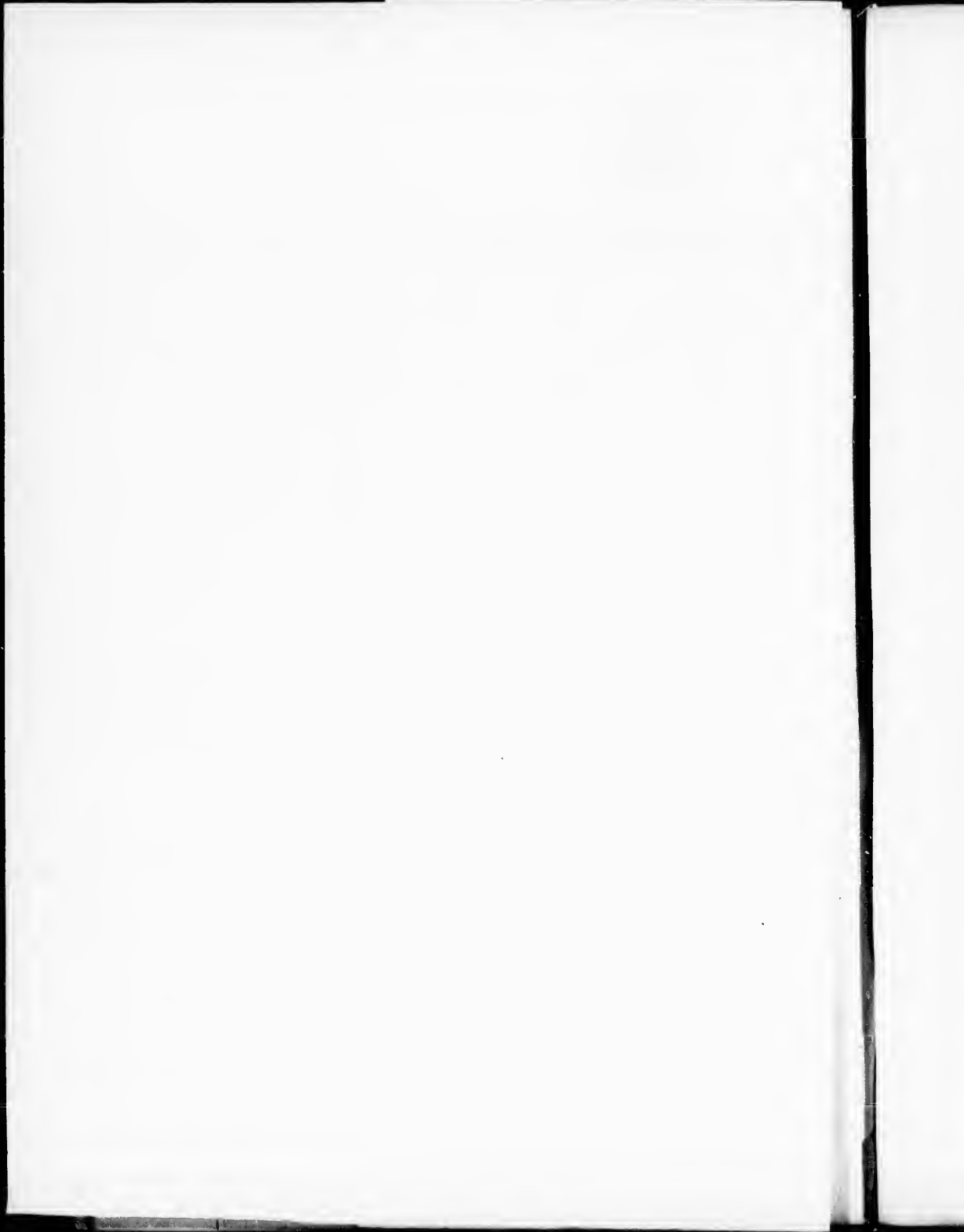
Un des symboles suivants apparaîtra sur la dernière image de chaque microfiche, selon le cas: le symbole \rightarrow signifie "A SUIVRE", le symbole ∇ signifie "FIN".

Les cartes, planches, tableaux, etc., peuvent être filmés à des taux de réduction différents. Lorsque le document est trop grand pour être reproduit en un seul cliché, il est filmé à partir de l'angle supérieur gauche, de gauche à droite, et de haut en bas, en prenant le nombre d'images nécessaire. Les diagrammes suivants illustrent la méthode.

errata
to

pelure,
n à

32X



BY-LAWS

PASSED IN THE

SEVENTH, EIGHTH, NINTH AND TENTH SESSIONS

OF THE

Municipal Council

OF THE

COUNTY OF ESSEX.

S. S. MACDONELL, WARDEN. - - - J. H. WILKINSON, CLERK.

SANDWICH, 1855.

To c

W
of d
the
desi
the
a M
Law
the
Mun
185
Con
B
Esse
Mun
decl
Cou

BY-LAWS.

NUMBER 16.

A BY-LAW

To enable the Municipal Council of the County of Essex, to raise by way of Loan, the sum of £8,000, through the consolidated Municipal Loan Fund of Upper Canada, to defray the expenses of building a Gaol and Court House in the Town of Sandwich, in and for the said County of Essex.

[Passed 20th March, 1855.]

WHEREAS it is necessary to raise the sum of £8,000, for the purpose of defraying the expenses of building a new Gaol and Court House, in the Town of Sandwich, for the County of Essex; And Whereas it is desirable to raise the same by way of Loan upon the authority of the Act 16th Victoria, chapter 22, entitled "An Act to establish a Municipal Loan Fund for Upper Canada," and whereas this By-Law has been approved by a majority of the Municipalities within the County of Essex, at meetings called and held in the respective Municipalities, within the County of Essex, on the 20th day of February, 1855, in conformity to the requirements of the said act to establish a Consolidated Municipal Loan Fund for Upper Canada;

Be it therefore enacted by the Municipal Council of the County of Essex, in council assembled, under and by virtue of the "Upper Canada Municipal Corporations Act of 1849," and it is hereby enacted and declared, That it shall and may be lawful for the Warden of the said County of Essex for the time being, and he is hereby authorized and

required, for and on behalf and in the name of this Council, to raise by way of loan, upon the credit of the said Consolidated Municipal Loan Fund for Upper Canada, a sum or sums not exceeding in the whole the sum of £8,000, of lawful money of this Province, for the term of 30 years.

And be it enacted, That the moneys to be borrowed under the authority of this By-Law, upon the credit of the said consolidated Municipal Loan Fund, shall be applied to defraying the expenses of the building the Gaol and Court House, in the Town of Sandwich, for the County of Essex, under the direction of the Municipal Council of the said county, and to no other purpose whatever.

And be it enacted, That the Debentures to be issued by the Receiver General of this Province, under the authority of this By-Law, shall be payable at the expiration of 30 years, after the passing of this By-Law.

And be it further enacted, That the principal and interest of the said loan shall be payable by all the Townships, Towns, and Villages in the County of Essex. And the County Treasurer shall in each year apportion the amount to be paid by each, according to the amount of property returned upon the Assessment Rolls of such Townships, Towns or Villages, respectively, for the financial year next preceding that for which the apportionment is to be made.

[The above By-Law was published, for one month, with the following notice.]

The above is a true copy of a proposed By-Law, that will be taken into consideration by the Municipal Council of the County of Essex, in the Council Chamber at the town of Sandwich, in the said county of Essex, on the 20th day of March, 1855, at the hour of 10 o'clock, A.M., at which time and place the Members of the Municipality are hereby required to attend for the purpose aforesaid.

The first publication of this By-Law, in the "Canada Oak" newspaper, published in the town of Sandwich aforesaid, was on the 26th day of January, 1855, and the following time and places have been appointed by the aforesaid Municipal Council for the several Municipalities comprising the County of Essex, for holding the meetings prescribed by

the C
whet

[O
And

Colch
Gosfi
Maid
Mald

Mers
Roch

J.

To p

WH
the
of th

A
men

the g
I.
colle

the Consolidated Municipal Loan Fund Act, for taking the vote as to whether the above sum shall be so raised or not.

[On the 20th day of February, 1855.]

Anderdon, at the School House, 2d Concession.

Colchester, at the Town Hall.

Gosfield, at the Town Hall.

Maidstone, at John Morins, 4th Con.

Malden, at the School House, 4th Concession.

Mersea, at the Union School House:

Rochester, at the School House, 2d Concession.

Sandwich, in the Grammar School in the Town of Sandwich.

Tilbury West, at the School House on Lot No. 13, Middle Road.

Amherstburg Town, at the Council Office.

Windsor Village, at the Brick School House.

J. H. WILKINSON,
County Clerk.

S. S. MACDONELL,
Warden.

NUMBER 17.

A B Y - L A W

To provide for the Current Expenses of the County of Essex, and for the payment of Grand and Petit Jurors for the year 1855.

[Passed 17th July, A.D., 1855.]

WHEREAS it is necessary to provide the sum of £2313 14s. 7d., to defray the Current Expenses of the County of Essex; according to the estimate of the Finance Committee.

And whereas it is expedient to provide the sum of £375 for the payment of Grand and Petit Jurors attending the Courts of Assize, Nisi Prius, the general Quarter Sessions of the Peace and the County Court;

I. Be it therefore enacted, &c, That there shall be raised, levied and collected the said sum of £2313 14s. 7d., upon the whole rateable pro-

perty in the County of Essex in addition to all other rates and assessments for and during the present year, for the general current expenses of the said County of Essex.

II. Be it enacted, That there shall also be raised, levied and collected the said sum of £375 for the purpose of creating a fund for the payment of the said Jurors attending the Courts of Assize, Nisi Prius, the general Quarter Sessions of the Peace and the County Court in and for the said County of Essex, upon the whole rateable property in the County of Essex in addition to all other rates and assessments imposed for County or township purposes.

III. Be it enacted, That the sum of five shillings per diem be paid to each and every Grand and Petit Juror for each day's attendance at any of the Courts, the Court of Assize, Nisi Prius, the General Quarter Sessions of the Peace and the County Court, and the further sum of 6d per mile for every mile necessarily travelled by such Jurors from his place of residence to the Court House of the said County, according to the pay list to be kept by the Sheriff of the said County.

IV. Be it enacted, That the Sheriff of the said County shall be entitled to receive the following sums and no more, for his services under this By-Law, namely, for every pay list the sum of 1s. 3d. and for checking the sums per diem the sum of 5s., and for certifying and returning the same to the Treasurer of the said County, the sum of 1s. 3d. each.

V. Be it enacted that all sums payable under the third and fourth sections of this By-Law shall be paid by the Treasurer of the said County upon the certified pay lists of the Sheriff.

VI. And be it enacted, That the burthen of the said several assessments above required to be raised, levied and collected, shall be portioned amongst and borne by the several municipalities, in the proportion or shares hereinafter named; and the several sums set opposite to the names of each municipality in the Schedule hereunto annexed, and forming part of this By-Law, shall be raised, levied and collected therein upon the whole rateable property in each respectively for the several rates for which they are designed, and shall be paid over into the hands of the County Treasurer on or before the 14th day of December, in the present

year,
By-L

Amb
And
Colc
Gosh
Maic
Malc
Mers
Rock
Sanc
Tilb
Win

year, and to be by him applied to the several purposes appointed by this By-Law.

MUNICIPALITIES.	Rate for the Current Expenses 1855.			Rate for the Pay- ment of Jurors 1855.		
	£	s.	d.	£	s.	d.
Amherstburg, Town	292	19	4	46	17	6
Anderdon	104	3	3	16	13	4
Colchester	207	7	1	33	3	6
Gosfield	220	13	0	40	2	1
Maidstone	139	19	6	22	7	11
Malden	182	5	9	29	3	4
Mersea	162	14	2	26	0	10
Rochester	75	16	11	12	3	8
Sandwich	553	7	8	88	9	9
Tilbury West	81	7	7	13	0	5
Windsor, Village	292	19	4	46	17	6
£	2,313	14	7	375	0	0

NUMBER 18.

A B Y - L A W

To provide for the Payment of Qualified Teachers and Local Superintendents of Schools for the Year 1855.

[Passed 17th July, A.D. 1855.]

WHEREAS it is necessary, in order to entitle the several Townships, in the County of Essex, to certain sums of money out of the Legislative school grant for the payment of legally qualified teachers, to assess the several Townships in sums equal at least to the sums apportioned after allowing for defalcations and expences for collection; and whereas it is necessary to provide for the salaries of Local Superintendents of Schools; and whereas it will require the sum of £417 7s. 9d. for the payment of qualified Teachers, and a farther sum of £54 for the payment of Local Superintendents of Schools;

I. Be it therefore enacted, by the Municipal Council of the County of Essex in Council assembled, under and by virtue of "The Upper Canada Municipal Corporations Act, 1849," That there be raised, levied and collected upon the rateable property in the several Townships, in the County of Essex, in addition to all other rates and assessments, for the payment of Qualified Teachers and Local Superintendents of Schools, the sum of £471 7s. 9d.; and that the sums set opposite to the names of each Township in the Schedule hereunto annexed and forming part of this By-law, shall be raised, levied and collected therein, in the same manner as all other county rates are now by law raised, levied and collected, and the sums for the payment of Qualified Teachers in the said schedule mentioned shall be paid into the hands of the County Treasurer, and the sums in the said schedule also mentioned for the payment of Local Superintendents shall be paid over into the hands of Sub-Trea-

sure
fore t

Refer
the
de

And
Colc
Gosf
Maid
Mald
Mers
Roch
Sand
Tilbu

surers of school moneys of the several Townships respectively, on or before the 14th day of December now next ensuing.

SCHEDULE

Referred to in the foregoing By-Law and forming part thereof, showing the proportions which each Township must bear of the Sum levied under this By-Law.

TOWNSHIPS.	Rate for Payment of Qualified Teachers, 1855.			Rate for Pay- ment of Local Superin- tendents of Schools, 1855.		
	£	s.	d.	£	s.	d.
Anderdon	28	1	8	2	0	0
Colchester	47	0	0	8	0	0
Gosfield	57	3	4	8	0	0
Maidstone	31	7	10	5	0	0
Malden	42	7	11	5	0	0
Mersea	37	7	4	5	0	0
Rochester	30	0	0	3	0	0
Sandwich	129	17	6	14	0	0
Tilbury West	17	3	2	4	0	0
£	417	7	9	44	0	0

year, &
By-La

Amh
Ande
Colch
Gosfi
Maid
Malde
Merse
Roch
Sand
Tilbu
Wind

year, and to be by him applied to the several purposes appointed by this By-Law.

MUNICIPALITIES.	Rate for the Current Expenses 1855.			Rate for the Pay- ment of Jurors 1855.		
	£	s.	d.	£	s.	d.
Amherstburg, Town	292	19	4	46	17	6
Anderdon	104	3	3	16	13	4
Colchester	207	7	1	33	3	6
Gosfield	220	13	0	40	2	1
Maidstone	139	19	6	22	7	11
Malden	182	5	9	29	3	4
Mersea	162	14	2	26	0	10
Rochester	75	16	11	12	3	8
Sandwich	553	7	8	88	9	9
Tilbury West	81	7	7	13	0	5
Windsor, Village	292	19	4	46	17	6
	£	2,313	14 7	375	0	0

NUMBER 18.

A B Y - L A W

To provide for the Payment of Qualified Teachers and Local Superintendents of Schools for the Year 1855.

[Passed 17th July, A.D. 1855.]

WHEREAS it is necessary, in order to entitle the several Townships, in the County of Essex, to certain sums of money out of the Legislative school grant for the payment of legally qualified teachers, to assess the several Townships in sums equal at least to the sums apportioned after allowing for defalcations and expences for collection; and whereas it is necessary to provide for the salaries of Local Superintendents of Schools; and whereas it will require the sum of £417 7s. 9d. for the payment of qualified Teachers, and a further sum of £54 for the payment of Local Superintendents of Schools;

I. Be it therefore enacted, by the Municipal Council of the County of Essex in Council assembled, under and by virtue of "The Upper Canada Municipal Corporations Act, 1849," That there be raised, levied and collected upon the rateable property in the several Townships, in the County of Essex, in addition to all other rates and assessments, for the payment of Qualified Teachers and Local Superintendents of Schools, the sum of £471 7s. 9d. ; and that the sums set opposite to the names of each Township in the Schedule hereunto annexed and forming part of this By-law, shall be raised, levied and collected therein, in the same manner as all other county rates are now by law raised, levied and collected, and the sums for the payment of Qualified Teachers in the said schedule mentioned shall be paid into the hands of the County Treasurer, and the sums in the said schedule also mentioned for the payment of Local Superintendents shall be paid over into the hands of Sub-Trea-

urers
fore t

Refer
the
der

Ande
Colche
Gosfie
Maidst
Malder
Mersea
Roches
Sandw
Tilbury

surers of school moneys of the several Townships respectively, on or before the 14th day of December now next ensuing.

SCHEDULE

Referred to in the foregoing By-Law and forming part thereof, showing the proportions which each Township must bear of the Sum levied under this By-Law.

TOWNSHIIPS.	Rate for Payment of Qualified Teachers, 1855.			Rate for Pay- ment of Local Superin- tendents of Schools, 1855.		
	£	s.	d.	£	s.	d.
Anderdon	28	1	8	2	0	0
Colchester	47	0	0	8	0	0
Gosfield	57	3	4	8	0	0
Maidstone	31	7	10	5	0	0
Malden	42	7	11	5	0	0
Mersea	37	7	4	5	0	0
Rochester	30	0	0	3	0	0
Sandwich	129	17	6	14	0	0
Tilbury West	17	3	2	4	0	0
£	417	7	9	44	0	0

Amounts of
County C

ate for
t Expen
1855.

	s.	d.
2	19	
4	3	
7	7	
0	13	
9	19	
2	5	
2	14	
5	16	
3	7	
1	7	
02	19	
<hr/>		
13	14	

TABLE,

SHOWING the Aggregate Amount of Rateable Property in the County of Essex, for the Years 1852, 1853 and 1855, together with the Aggregate Amount of Rateable Property in 1855 in the several Municipalities of the County, under B

MUNICIPALITIES.	Aggregate of Rateable Property as returned for 1852.	Aggregate of Rateable Property as equalized, 1852.	Aggregate of Rateable Property as returned for 1853.	Aggregate of Rateable Property as equalized, 1853.	Aggregate of Rateable Property as returned for 1855.	Aggregate of Rateable Property as equalized, 1855.
	£	£	£	£	£	£
Amherstburg, . . .	90,682	90,682	96,339	105,659	30,855	90,682
Anderdon, . . .	25,613	30,189	28,679	31,650	63,718	30,189
Colchester, . . .	58,919	58,919	59,117	59,117	76,697	58,919
Gosfield, . . .	64,590	64,590	69,461	69,461	42,987	64,590
Maidstone, . . .	25,601	25,601	27,461	35,000	55,574	25,601
Malden, . . .	47,030	47,030	50,420	60,000	50,394	47,030
Mersea, . . .	43,259	43,259	43,721	43,721	23,364	43,259
Rochester, . . .	21,543	21,543	23,292	30,000	144,789	21,543
Sandwich, . . .	154,549	154,549	164,886	200,000	18,296	154,549
Tilbury West, . . .	13,604	13,604	17,679	22,079	121,855	13,604
Windsor, . . .				36,735		
	545,390	549,966	490,445	693,422	628,529	545,390

TABLE,

1852, 1853 and 1855, together with the amounts of County Rates, School Rates, and Jury Rates to be levied for the Year
of the County, under By-Laws of the County Council.

Aggregate of Rateable Property as returned for 1855.	Aggregate of Rateable Property as equalized, 1855.	Rate for	Rate for	Rate for	Rate for	Rate for
		Current Expenses 1855.	Payment of Jurors 1855.	Qualified Teachers for 1855.	Local Superinten- dents, for 1855.	Payment of In- terest on Deben- tures for building Court House and Gaol, 1855.
£	£	£ s. d.	£ s. d.	£ s. d.	£ s. d.	£ s. d.
	90,000	292 19 4	46 17 6	25 1 8	2 0 0	82 0 8
30,855	32,000	104 3 3	16 13 4	47 0 0	8 0 0	29 3 4
63,718	63,700	207 7 1	33 3 6	57 3 4	8 0 0	58 1 3
76,697	77,000	220 13 0	40 2 1	31 7 10	5 0 0	70 3 8
42,987	43,000	139 19 6	22 7 11	42 7 11	5 0 0	39 3 10
55,574	56,000	182 5 9	29 3 4	37 6 4	5 0 0	51 0 10
50,394	50,000	162 14 2	26 0 10	30 0 0	3 0 0	45 11 6
23,364	23,300	75 16 11	12 3 8	129 17 6	14 0 0	21 4 9
144,789	170,000	553 7 8	88 9 9	17 3 2	4 0 0	154 19 0
18,296	25,000	81 7 7	13 0 5			22 15 9
121,855	90,000	292 19 4	46 17 6			82 0 8
				417 7 9	54 0 0	656 5 3
628,529	720,000	2313 14 7	375 0 0			

