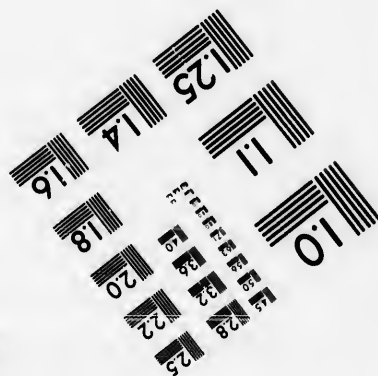
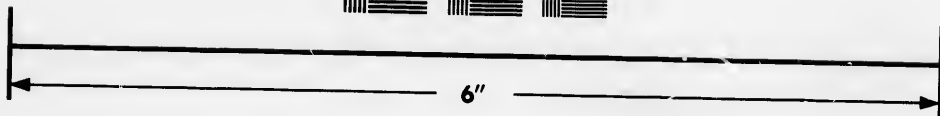
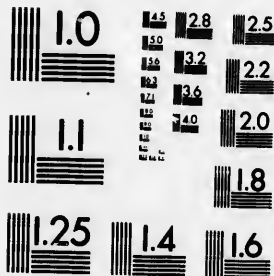


**IMAGE EVALUATION
TEST TARGET (MT-3)**



**Photographic
Sciences
Corporation**

23 WEST MAIN STREET
WEBSTER, N.Y. 14580
(716) 872-4503

**CIHM/ICMH
Microfiche
Series.**

**CIHM/ICMH
Collection de
microfiches.**



Canadian Institute for Historical Microreproductions / Institut canadien de microreproductions historiques

© 1986

Technical and Bibliographic Notes/Notes techniques et bibliographiques

The Institute has attempted to obtain the best original copy available for filming. Features of this copy which may be bibliographically unique, which may alter any of the images in the reproduction, or which may significantly change the usual method of filming, are checked below.

L'institut a microfilmé le meilleur exemplaire qu'il lui a été possible de se procurer. Les détails de cet exemplaire qui sont peut-être uniques du point de vue bibliographique, qui peuvent modifier une image reproduite, ou qui peuvent exiger une modification dans la méthode normale de filmage sont indiqués ci-dessous.

- Coloured covers/
Couverture de couleur
- Covers damaged/
Couverture endommagée
- Covers restored and/or laminated/
Couverture restaurée et/ou pelliculée
- Cover title missing/
Le titre de couverture manque
- Coloured maps/
Cartes géographiques en couleur
- Coloured ink (i.e. other than blue or black)/
Encre de couleur (i.e. autre que bleue ou noire)
- Coloured plates and/or illustrations/
Planches et/ou illustrations en couleur
- Bound with other material/
Relié avec d'autres documents
- Tight binding may cause shadows or distortion
along interior margin/
Le reliure serrée peut causer de l'ombre ou de la
distorsion le long de la marge intérieure
- Blank leaves added during restoration may
appear within the text. Whenever possible, these
have been omitted from filming/
Il se peut que certaines pages blanches ajoutées
lors d'une restauration apparaissent dans le texte,
mais, lorsque cela était possible, ces pages n'ont
pas été filmées.
- Additional comments:
Commentaires supplémentaires:

- Coloured pages/
Pages de couleur
- Pages damaged/
Pages endommagées
- Pages restored and/or laminated/
Pages restaurées et/ou pelliculées
- Pages discoloured, stained or foxed/
Pages décolorées, tachetées ou piquées
- Pages detached/
Pages détachées
- Showthrough/
Transparence
- Quality of print varies/
Qualité inégale de l'impression
- Includes supplementary material/
Comprend du matériel supplémentaire
- Only edition available/
Seule édition disponible
- Pages wholly or partially obscured by errata
slips, tissues, etc., have been refilmed to
ensure the best possible image/
Les pages totalement ou partiellement
obscurcies par un feuillet d'errata, une pelure,
etc., ont été filmées à nouveau de façon à
obtenir la meilleure image possible.

This item is filmed at the reduction ratio checked below/
Ce document est filmé au taux de réduction indiqué ci-dessous.

10X	12X	14X	16X	18X	20X	22X	24X	26X	28X	30X	32X
<input type="checkbox"/>	<input type="checkbox"/>	<input type="checkbox"/>	<input type="checkbox"/>	<input type="checkbox"/>	<input type="checkbox"/>	<input type="checkbox"/>	<input type="checkbox"/>	<input type="checkbox"/>	<input checked="" type="checkbox"/>	<input type="checkbox"/>	<input type="checkbox"/>

The copy filmed here has been reproduced thanks to the generosity of:

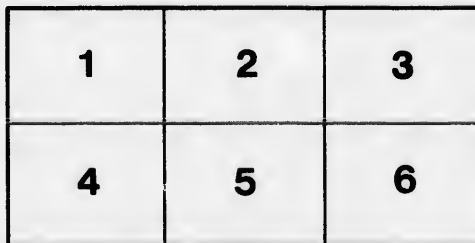
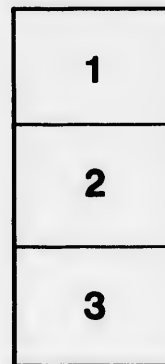
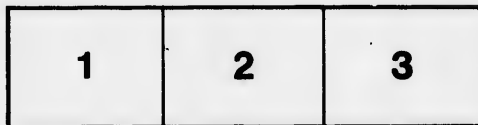
Library of the Public
Archives of Canada

The images appearing here are the best quality possible considering the condition and legibility of the original copy and in keeping with the filming contract specifications.

Original copies in printed paper covers are filmed beginning with the front cover and ending on the last page with a printed or illustrated impression, or the back cover when appropriate. All other original copies are filmed beginning on the first page with a printed or illustrated impression, and ending on the last page with a printed or illustrated impression.

The last recorded frame on each microfiche shall contain the symbol \rightarrow (meaning "CONTINUED"), or the symbol ∇ (meaning "END"), whichever applies.

Maps, pietas, charts, etc., may be filmed at different reduction ratios. Those too large to be entirely included in one exposure are filmed beginning in the upper left hand corner, left to right and top to bottom, as many frames as required. The following diagrams illustrate the method:



L'exemplaire filmé fut reproduit grâce à la générosité de:

La bibliothèque des Archives
publiques du Canada

Les images suivantes ont été reproduites avec le plus grand soin, compte tenu de la condition et de la netteté de l'exemplaire filmé, et en conformité avec les conditions du contrat de filmage.

Les exemplaires originaux dont la couverture en papier est imprimée sont filmés en commençant par le premier plat et en terminant soit par la dernière page qui comporte une empreinte d'impression ou d'illustration, soit par le second plat, selon le cas. Tous les autres exemplaires originaux sont filmés en commençant par la première page qui comporte une empreinte d'impression ou d'illustration et en terminant par la dernière page qui comporte une telle empreinte.

Un des symboles suivants apparaîtra sur la dernière image de chaque microfiche, selon le cas: le symbole \rightarrow signifie "A SUIVRE", le symbole ∇ signifie "FIN".

Les cartes, planches, tableaux, etc., peuvent être filmés à des taux de réduction différents. Lorsque le document est trop grand pour être reproduit en un seul cliché, il est filmé à partir de l'angle supérieur gauche, de gauche à droite, et de haut en bas, en prenant le nombre d'images nécessaire. Les diagrammes suivants illustrent la méthode.

re
détails
es du
modifier
er une
image

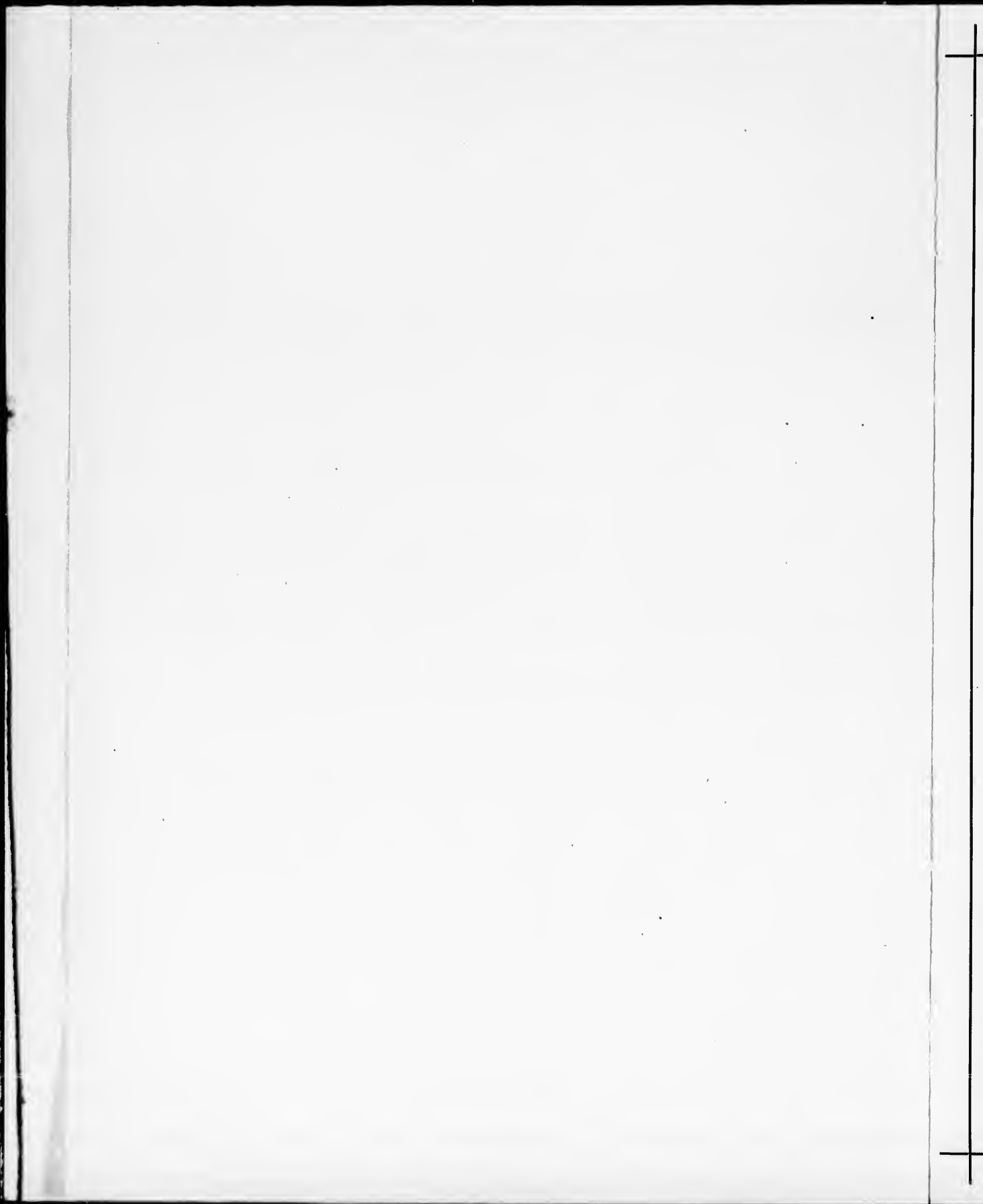
es

errata
to

pelure,
on à



32X



AIKENHEAD & CROMBIE'S

- HANDY BOOK -

- OF -

BUILDERS' HARDWARE

*In which will be found Illustrated and Described a portion of the Leading Goods
which we always keep in Stock.*

*We cordially invite Architects, Builders and intending buyers, to call and examine
our Bronze Hardware, at our Warehouse*

COR. KING AND YONGE STREETS

TORONTO



ADELAIDE

ST. EAST

ARE THE
POPULAR PRINTERS
OF CANADA

- INDEX -

A PAGE
Axle Pulleys - - - - - 36, 39

B
Bars, Shutter - - - - - 34
Bell Pulls - - - - - 17
Bolts, Barrel - - - - - 22
Bolts, Chain and Foot - - - - - 23
Bolts, Flush - - - - - 20
Butts, Loose Pin - - - - - 13, 14, 15
Butts, Loose Joint - - - - - 43
Butts, Shutter - - - - - 16

C
Catches, Cupboard - - - - - 24, 26
Catches, Transom - - - - - 26
Centers, Sash - - - - - 30
Chain Bolts - - - - - 23
Chain Door Fasteners - - - - - 21
Chain, Sash - - - - - 38
Coat and Hat Hooks - - - - - 27
Cupboard Catches - - - - - 24
Cupboard Turns - - - - - 26

D
Door Chain Fasteners - - - - - 21
Door Hangers - - - - - 35
Door Pulls - - - - - 28, 33
Door Springs, Norton - - - - - 37
Drawer Pulls - - - - - 28, 42

E
Escape, Fire - - - - - 52
Escutcheons - - - - - 12, 42

F
Fasteners, Chain Door - - - - - 21
Fasteners, Sash - - - - - 32, 33
Finger Plates - - - - - 24
Fire Escape - - - - - 52
Flaps, Shutter - - - - - 16
Flush Bolts - - - - - 20

H
Hangers, Door - - - - - 35
Handles, Door - - - - - 33
Handles, Drawer - - - - - 28

H PAGE
Handles, Store Door, with Lift Latch - - - - - 18
Handles, Store Door, with Mortise Lock - - - - - 19
Hinges, Butt - - - - - 13, 14, 15
Hinges, Shutter - - - - - 16
Hooks, Coat and Hat - - - - - 27

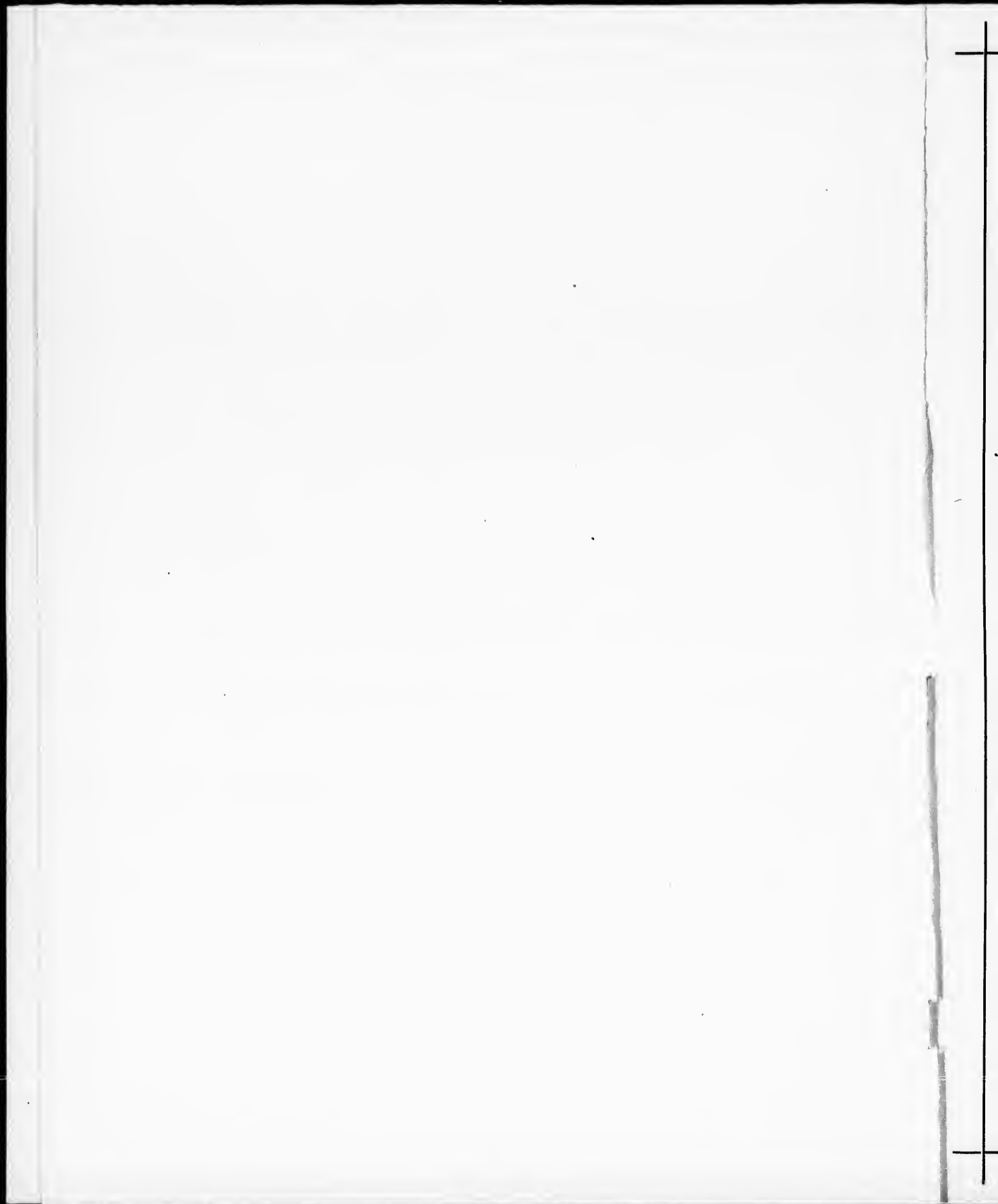
K
Knobs, Door - - - - - 11, 42
Knobs, Shutter - - - - - 34

L
Latches, Vestibule - - - - - 5
Latches, Lift, with Store Door Handles - - - - - 18
Lifts, Flush Sash - - - - - 29
Lifts, Hook Sash - - - - - 29
Lifts, Transom - - - - - 30, 31
Letter Plates - - - - - 25
Locks, Flush Sliding Door - - - - - 9, 41
Locks, Front and Vestibule - - - - - 4, 5, 41
Locks, Mortise Knob - - - - - 6, 7, 8, 41
Locks, Mortise Knob, Rabbeted - - - - - 8
Locks, Mortise, with Store Door Handles - - - - - 19
Locks, Sash - - - - - 32, 33

P
Plates, Finger - - - - - 24
Plates, Letter - - - - - 25
Pulleys, Axle - - - - - 36, 39
Pulls, Bell - - - - - 17
Pulls, Door - - - - - 28, 33
Pulls, Drawer - - - - - 28, 42

S
Sash Centers - - - - - 30
Sash Chain - - - - - 38
Sash Lifts - - - - - 29
Sash Locks - - - - - 32, 33
Springs, Door - - - - - 37
Stable Fittings - - - - - 44, 45, 46, 47, 48, 49, 50, 51
Store Door Handles - - - - - 19
Shutter Hinges and Flaps - - - - - 16

T
Transom Catches - - - - - 26
Transom Lifts - - - - - 30, 31



INTRODUCTION

WE have pleasure in presenting the following Catalogue of Builders' Hardware to the Architects and Builders of Canada, and would respectfully solicit their patronage.

After long years of experience in this business, and knowing the want which has been felt for a descriptive condensed book of the better class of Builders' Hardware, we have felt encouraged to issue this Illustrated Catalogue, the first of Bronze Hardware.

This Book will be found to contain good value Bronze Hardware at Moderate prices.

All the Bronze Hardware illustrated is made by "THE HOPKINS and DICKINSON MAN'FG CO., NEW YORK," whose goods are not only the most elegant in Design, but are made of the Best and Purest Bronze Metal.

We carry in stock all the Goods in this Book, and consequently can fill orders promptly.

Thanking our many friends for their support in the past, and soliciting their future orders,

We remain,

Very truly yours,

Aikenhead & Crombie.

Cor. King and Yonge Sts., Toronto.

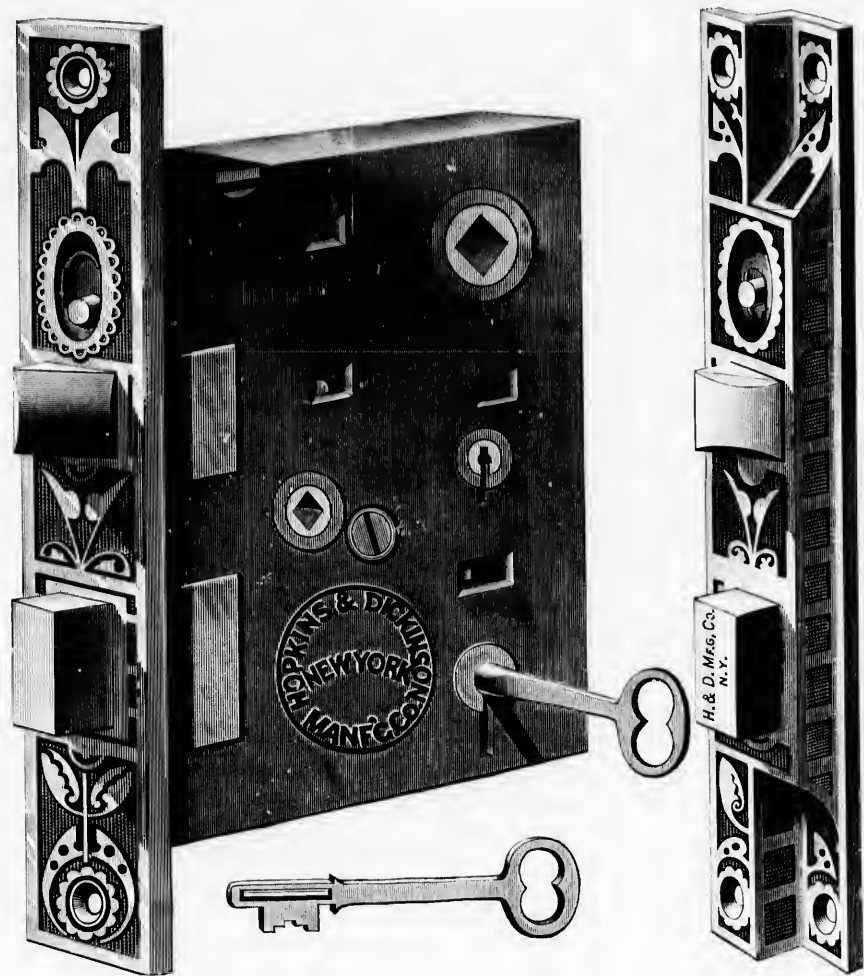
The following are a few of the very many Buildings we have supplied with Bronze Hardware:—

CUSTOM HOUSE
BANK OF MONTREAL
STANDARD BANK
OSGOODE HALL
QUEBEC BANK
DALTON McARTHUR'S
ROBT. SIMPSON'S
PII. JACOBI'S
HON. FRANK SMITH'S

JOS. CAWTHRAS
YONGE ST. ARCADE
ST. JOHN'S GROVE CHAPEL
A. W. GRASETT'S
WYLD, GRASETT & DARLING
JNO. HARVIE'S
J. C. FITCH'S
McMASTER HALL
DR. SPRAGGES

WM. ELLIOTT'S
THE CROCKER BLOCK
R. J. SCORES
W. E. CORNELL'S
E. R. CARPENTER, Collingwood
T. REID, Galt
T. C. SHURLY, Galt
E. D. TILSON, Tilsonburg
AND MANY OTHERS

- *Mortise Front Door* -
Locks and Vestibule Latches



Lock No. 249

Lock No. 252

- *For Description and Prices see Page 5* -

- *Fine Bronze* -

Mortise Front Door and Vestibule Locks

WITH PLATED NIGHT KEYS

- *Flat Fronts Reversible* -

No.	SIZE.	Thickness of Case.	DESCRIPTION.	Each. Complete
249	5 x 3 $\frac{3}{4}$	$\frac{5}{8}$	Front Door Lock with night work. Ornamental Bronze Front and Strike. Bronze Thumb Piece. Patent Night Keys. Plain Hub, $\frac{5}{16}$. 3 Tumblers on Latch Bolt. 1 Tumbler on Dead Bolt.	\$4 00
250	3 $\frac{5}{8}$ x 3 $\frac{3}{4}$	$\frac{5}{8}$	Vestibule Latch, to match above. Keys to pass, - - - - -	3 50
6249	5 x 3 $\frac{3}{4}$	$\frac{5}{8}$	Front Door Lock. Polished Bronze, similar to No. 249, - - - - -	4 50
6250	3 $\frac{5}{8}$ x 3 $\frac{3}{4}$	$\frac{5}{8}$	Vestibule Latch. Polished Bronze, similar to No. 250 - - - - -	4 00

Locks No. 249 and 250. Come complete with Knobs Nos. 471 x 470, and Escutcheons No. 2449, 2450, and No. 1349.
 Locks No. 6249 and 6250. Come complete with Knobs No. 5471 x 5470, and Escutcheons No. 1905, 1935, and No. 51349.

- *Mortise* -

Front Door Locks and Vestibule Latches

- *Rabbeted Fronts* -

No.	SIZE.	Thickness of Case.	DESCRIPTION.	Each. Complete
252	5 x 3 $\frac{3}{4}$	$\frac{5}{8}$	Front Door Lock with night work. Ornamental Bronze Front and Strike. Bronze Thumb Piece. Patent Night Keys. Plain Hub, $\frac{5}{16}$. 3 Tumblers on Latch Bolt. 1 Tumbler on Dead Bolt.	\$4 75
253	3 $\frac{5}{8}$ x 3 $\frac{3}{4}$	$\frac{5}{8}$	Vestibule Latch, to match above. Keys to pass, - - - - -	4 25
6252	5 x 3 $\frac{3}{4}$	$\frac{5}{8}$	Front Door Lock. Polished Bronze, similar to No. 252 - - - - -	5 00
6253	5 x 3 $\frac{3}{4}$	$\frac{5}{8}$	Vestibule Latch. Polished Bronze, similar to No. 253 - - - - -	4 50

Distance from front of Lock or Latch to centre of key-hole, outside or short measurement, 3 inches.

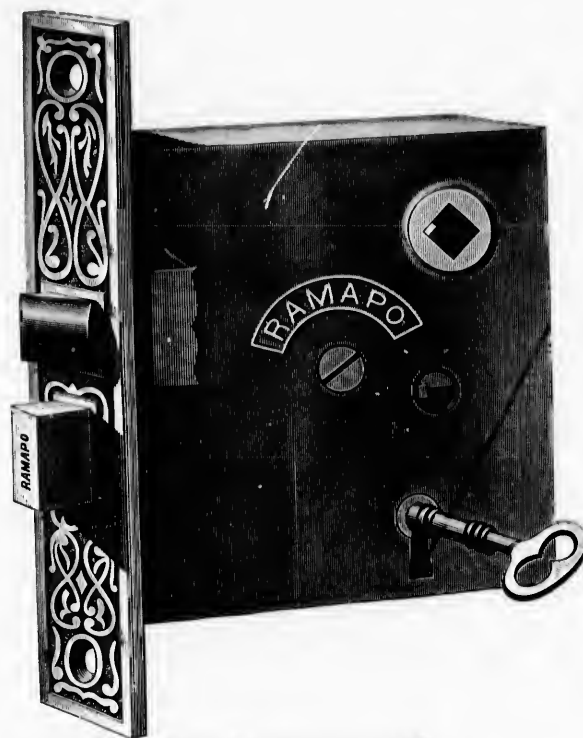
IN ORDERING, STATE HAND REQUIRED.

Locks No. 252 and 253. Come complete with Knobs No. 471 x 470, and Escutcheons No. 2449, 2450, and No. 1349.
 Locks No. 6252 and 6253. Come complete with Knobs No. 5471 x 5470, and Escutcheons No. 1905, 1935, and No. 51349.

- Mortise Knob Locks -

REVERSIBLE

- For Inside Doors -

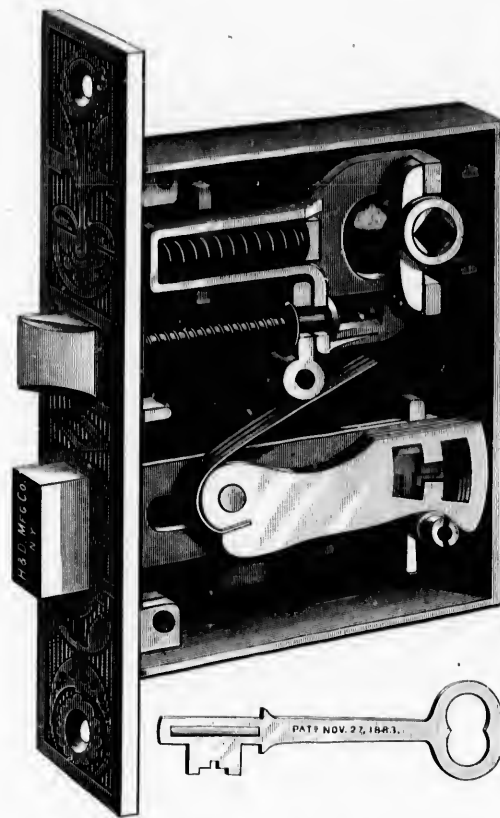


Mortise Lock No. 295

No.	Size.	Thickness of Case.	DESCRIPTION.	Per Dozen.
295	3½ x 3½	½	Ornamental Bronze Front and Strike. Iron Bolt and Latch, with Bronze Head. Reversible. Hub, ⅜ inch.	\$ 9 50
6295	3½ x 3½	½	Similar to No. 295. Polished Bronze Front and Strike, - - - -	10 00
296	4 x 3½	½	Ornamental Bronze Front and Strike. Iron Bolt and Latch, with Bronze Head. Reversible. Hub, ⅜ inch.	10 50
6296	4 x 3½	½	Similar to No. 296. Polished Bronze Front and Strike, - - - -	11 00

- *Extra Fine* -
 - *Mortise Knob Locks* -
 For Inside Doors

- WITH PATENT STEEL KEYS -



Mortise Lock No. 225

No.	SIZE.	Thickness of Case.	DESCRIPTION.	Per Dozen.
225	4 x 3 1/4	1/2"	Ornamental Bronze Front and Strike. 3 Tumblers- 1/2" Hub,	\$15 00
6225	4 x 3 1/4	1/2"	Similar to above. Polished Bronze Front and Strike,	15 75

- Extra Fine -
 - Mortise Knob Locks -



Mortise Lock No. 289

No.	SIZE.	Thickness of Case.	DESCRIPTION.	PRICE, EACH.
289	5 x 4	$\frac{7}{16}$	Ornamental Bronze Front and Strike. All Bronze and Brass inside works. Rabbeted	\$2 40
6289	5 x 4	$\frac{1}{2}$	Similar to No. 289. Polished Bronze Front and Strike,	2 50
286	4 x 3 $\frac{3}{4}$	$\frac{11}{16}$	Ornamental Bronze Front and Strike. All Bronze and Brass inside works. Flat Front,	2 10
6286	4 x 3 $\frac{3}{4}$	$\frac{11}{16}$	Similar to No. 286. Polished Bronze Front and Strike,	2 25

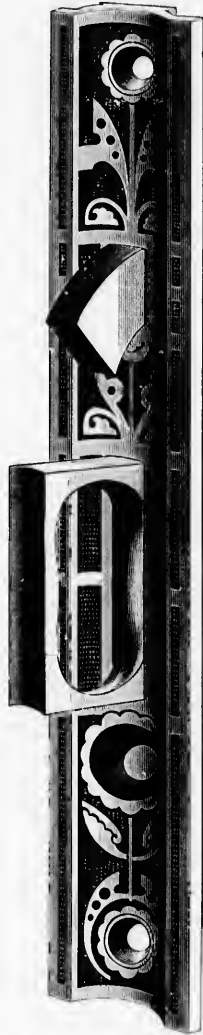
Any of our Bronze Escutcheons with single key hole can be used with this Lock.

IN ORDERING, STATE HAND REQUIRED.

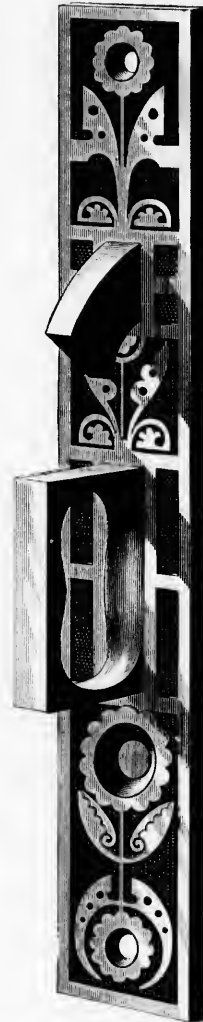
- Heavy -

Flush Sliding Door Locks

With Flush Escutcheons and Patent Extension Key



Front of Sliding Door Lock. No. 387



Front of Sliding Door Lock. No. 389

- For Description and Prices see Page 10 -

- Heavy -
Flush Sliding Door Locks

- With Flush Escutcheons -

- ASTRAGAL FRONTS -

- Complete for Double Doors -

No.	SIZE.	Depth to Centre of Keyhole.	Thickness of Case.	DESCRIPTION.	PER SET.
387	5½ x 4	2½	$\frac{5}{8}$	Ornamental Astragal Front. Bronze Spring Pull. Patent Hook Bolt. Patent Extension Key. Complete with Stop. 4 Bronze Flush Escutcheons, No. 449, - - - - -	\$4 50
5387	5½ x 4	2½	$\frac{5}{8}$	Similar to above. Polished Bronze. 4 Flush Escutcheons, No. 5499, - - - - -	4 75

- Flat Front Sliding Door Locks -

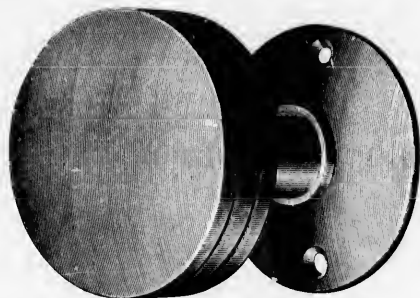
- Complete for Single Doors -

No.	SIZE.	Depth to Centre of Keyhole.	Thickness of Case.	DESCRIPTION.	PER SET.
391	5½ x 3½	2¼	$\frac{5}{8}$	Ornamental Flat Front and Strike. Bronze Spring Pull. Patent Hook Bolt. Patent Extension Key. Complete with Stop. 2 Bronze Flush Escutcheons, No. 449, - - - - -	\$2 75
5391	5½ x 3½	2¼	$\frac{5}{8}$	Similar to above. Polished Bronze. 4 Flush Escutcheons, No. 5499, - - - - -	3 00

Packed one Set in a Box, complete with Screws.

Flush Escutcheons Nos. 499 and 5499 are packed with above Locks, unless otherwise ordered.

ORNAMENTAL AND *Polished Bronze Door Knobs*

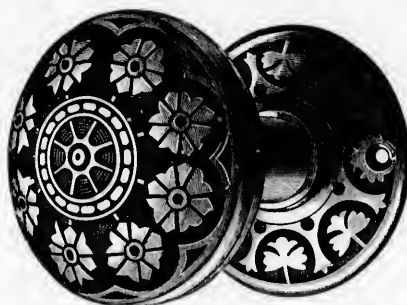


Knob No. 5470



Knob No. 470

No.	SIZE.	DESCRIPTION.	PER DOZ. PAIRS.
470	2 1/4	Ornamental Bronze with Round Roses,	\$13 00
471	2 1/2	Similar to 470,	17 00
5470	2 1/4	Polished Bronze, with Round Roses,	15 00
5471	2 1/2	Similar to 5470, Polished Bronze,	19 00



Knob No. 939 1-2

No.	SIZE.	DESCRIPTION.	PER DOZ. PAIRS.
935 1/2	2 1/2	Ornamental Bronze. Round Rose. 5/8 inch Spindle,	\$13 00
939 1/2	2 1/4	Ornamental Bronze. Round Rose. 5/8 inch Spindle,	8 50

Packed one-quarter dozen in a box, complete with Screws.

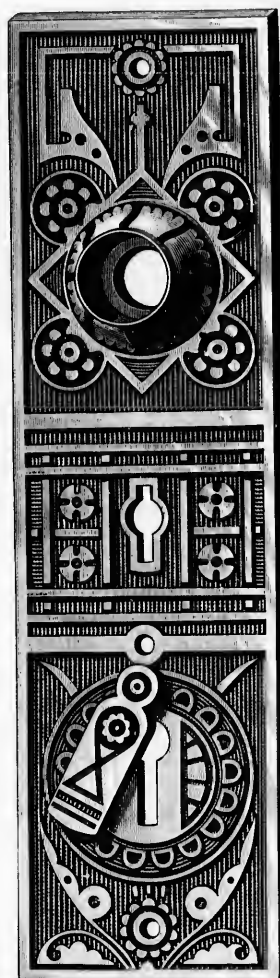
ORNAMENTAL AND
Polished Bronze Escutcheons



Flush Escutcheon. No. 499



Plate Escutcheon. No. 1349



**Escutcheon and Rose Combined
No. 2449**

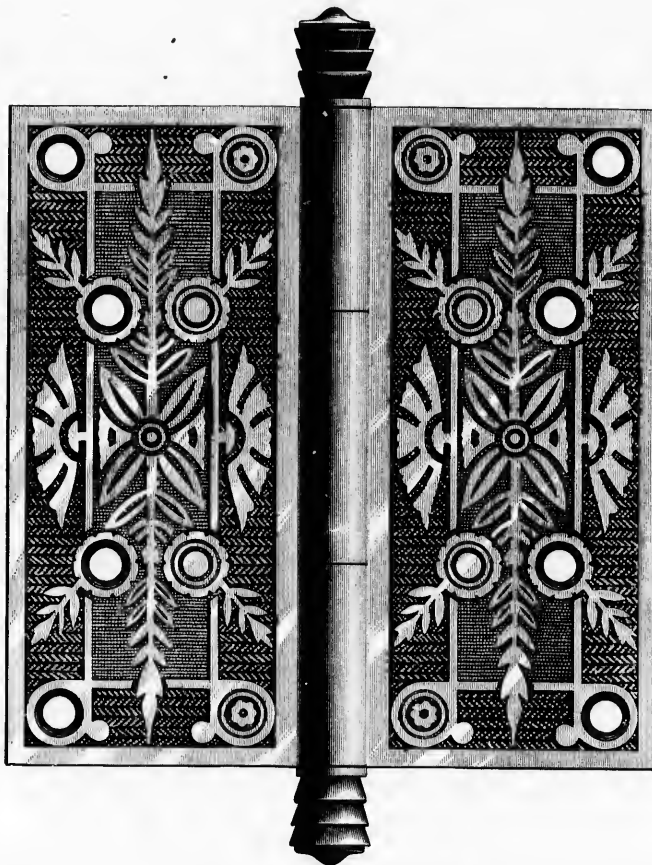
No.	SIZE.	DESCRIPTION.	PER DOZ.
1349	2 x 1 1/2	Ornamental Bronze Plate Escutcheon,	\$o 65
51349	2 x 1 1/2	Similar to No. 1349. Polished Bronze,	o 80 EACH.
2449	7 1/2 x 2	Ornamental Bronze. To fit our Front Door Locks,	o 75
1905	8 x 2	Similar to No. 2449. Polished Bronze,	o 95

- Ornamental Bronze Butts -

- Loose Pin -

FOUR STEEL BUSHINGS. TWO AT EACH JOINT. HEAVY.

All Bronze Butts of our manufacture are made from the same metal as our Knobs, Escutcheons, and other goods.



No. 129. Loose Pin Butt

For Price See Page 15.

- Polished -
- *Bronze Loose Pin Butts* -
- Double Bushed -

*EIGHT STEEL BUSHINGS. TWO AT EACH JOINT. EXTRA HEAVY.
FOR EITHER RIGHT OR LEFT HAND DOORS.*

All Bronze Butts of our manufacture are made from the same metal as our Knobs, Escutcheons and other goods.



No. 127. Loose Pin Butt

For Price See Page 15.

Ornamental and Polished
- Bronze Loose Pin Butts -

FOR EITHER RIGHT OR LEFT HAND DOORS.

No. 129

Ornamental Bronze Loose Pin. Four Steel Bushings. Two at Each Joint. Heavy.

See Cut Page 13.

SIZE.	PER PAIR.
3 x 3	\$1 25
3½ x 3½	1 45
4 x 4	1 95
4½ x 4½	2 20
5 x 5	2 50
6 x 6	3 75

No. 38

Polished Bronze. Double Steel Bushed. Four Steel Bushings. Two at each Joint. Heavy.

Same Butt as No. 127, with two joints instead of four.

SIZE.	PER PAIR.
3 x 3	\$1 30
3½ x 3½	1 50
4 x 4	2 00
4½ x 4½	2 30
5 x 5	2 60
6 x 6	4 10

No. 127

Polished Bronze Loose Pin. Double Bushed. Eight Steel Bushings. Two at Each Joint. Extra Heavy.

See Cut Page 14.

SIZE.	PER PAIR.
3½ x 3½	\$2 60
4 x 4	2 90
4½ x 4½	3 40
5 x 5	4 15
6 x 6	6 25

Ornamental and Polished Bronze
- Shutter Hinges and Flaps -

- FAST JOINT. HEAVY -



Shutter Flap, 1 1-8 x 1 3-4. No. 69

No. 69

ORNAMENTAL BRONZE FLAPS.

SIZE.	PER DOZ. PAIRS.
1 1/8 x 1 3/4	\$3 15
1 1/4 x 1 3/4	3 30

No. 103

POLISHED BRONZE FLAPS.

SIZE.	PER DOZ. PAIRS.
1 1/8 x 1 3/4	\$3 15
1 1/4 x 1 3/4	3 30



Shutter Hinge, 2 x 1 1-2. No. 67

No. 67

ORNAMENTAL BRONZE SHUTTER HINGES.

SIZE.	PER DOZ. PAIRS.
2 x 1 1/4	\$4 20
2 x 1 1/2	5 50
2 x 1 3/4	5 80

No. 102

POLISHED BRONZE SHUTTER HINGES.

SIZE.	PER DOZ. PAIRS.
2 x 1 1/4	\$4 30
2 x 1 1/2	4 50
2 x 1 3/4	4 80

POLISHED AND
Ornamental Bronze Bell Pulls



Bell Pull No. 1449



Lever Bell Pull No. 741

No.	SIZE OF PLATE,	DESCRIPTION.	PER DOZ.
1449	$4\frac{1}{8} \times 1\frac{7}{8}$	Ornamental Bronze,	\$11 00
51449	$4\frac{1}{8} \times 1\frac{7}{8}$	Similar to No. 1449. Polished Bronze,	13 00
741		Ornamental Lever Bell Pull,	2 10
5741		similar to No. 741. Polished Bronze,	2 50

Ornamental and Polished Bronze Store Door Handles

- WITH LIFT LATCH -



Store Door Handle and Lift Latch No. 575

No.	DESCRIPTION.	PER SET.
575	Ornamental Bronze, complete, with Lift Latch and Single Handle. For either Right or Left Hand Doors,	\$2 00
5575	Similar to No. 575. Polished Bronze,	2 35

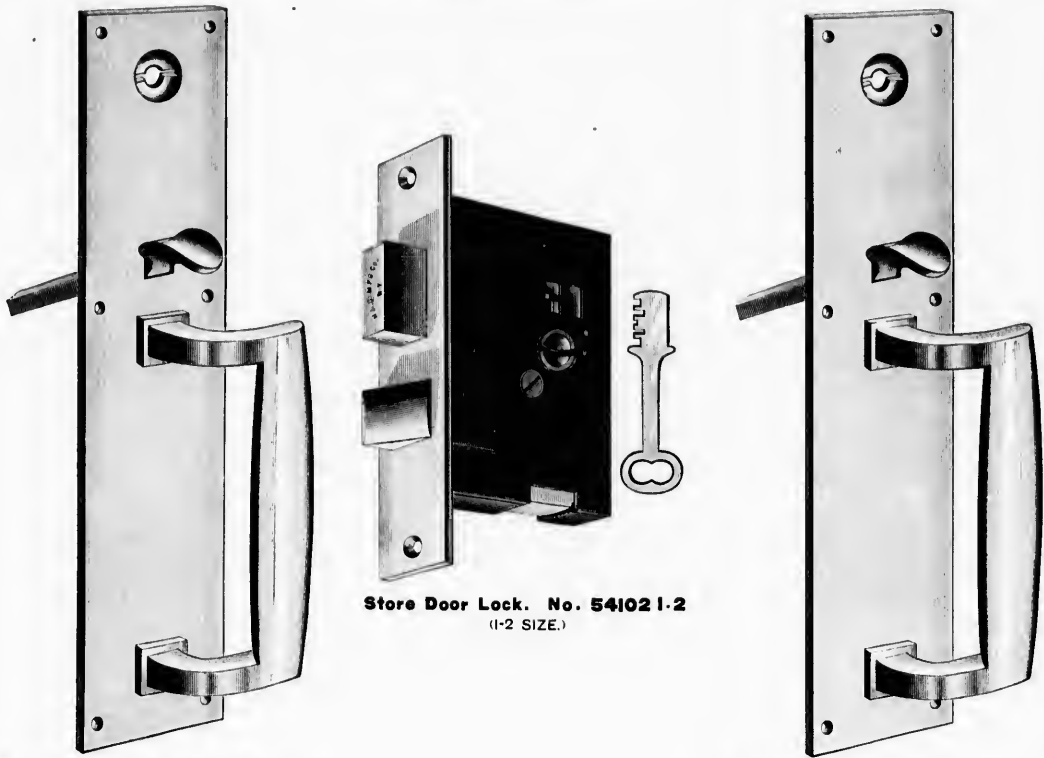
Packed complete with Screws.

Ornamental and Polished Bronze Store Door Handles

- Flat and Rabbeted Fronts -

PATENTED.

WITH FLAT STEEL KEYS



Store Door Handle. No. 54102 1-2
(1-2 SIZE.)

Store Door Lock. No. 54102 1-2
(1-2 SIZE.)

Store Door Handle. No. 54102 1-2
(1-2 SIZE.)

Distance from front of Lock to centre of keyhole, $1\frac{1}{4}$ inches, outside, or short measurement.

No.	Size of Lock.	Thickness of Case.	DESCRIPTION.	Per Set.
4104	$4\frac{1}{2} \times 2\frac{1}{2}$	$\frac{1}{4}$	Ornamental Bronze. Extra heavy. Three Tumblers. Complete with Double Handles. Flat Front,	\$5 75
4124	$4\frac{1}{2} \times 3\frac{1}{2}$	$\frac{1}{4}$	Similar to 4104. With Rabbeted Front,	6 75
54102 $\frac{1}{2}$	$4\frac{1}{2} \times 2\frac{1}{2}$	$\frac{1}{4}$	Square Plate. Polished Bronze. Extra Heavy. Three Tumblers. Complete with Double Handles. Flat Front,	7 00
54122 $\frac{1}{2}$	$4\frac{1}{2} \times 3\frac{1}{2}$	$\frac{1}{4}$	Similar to No. 54102 $\frac{1}{2}$. With Rabbeted Front,	8 50

Ornamental and Polished
- Bronze Sunk Flush Bolts -



No. 130. 9 inch.
Ornamental Bronze Flush Bolts

WITH SUNK THUMB PIECE.

Nos. 125 and 130. 1 1/8 in. Wide.

Length,	6 in.	8 in.	9 in.	12 in.	18 in.	24 in.	30 in.	36 in.	42 in.	48 in.
Price each	\$0 85	\$0 90	\$0 95	\$1 15	\$1 60	\$1 75	\$2 35	\$2 60	\$3 65	\$4 25

Heavy Bronze Flush Bolts

Nos. 5125 and 5130. 1 1/8 in. Wide.

SIMILAR TO ABOVE.

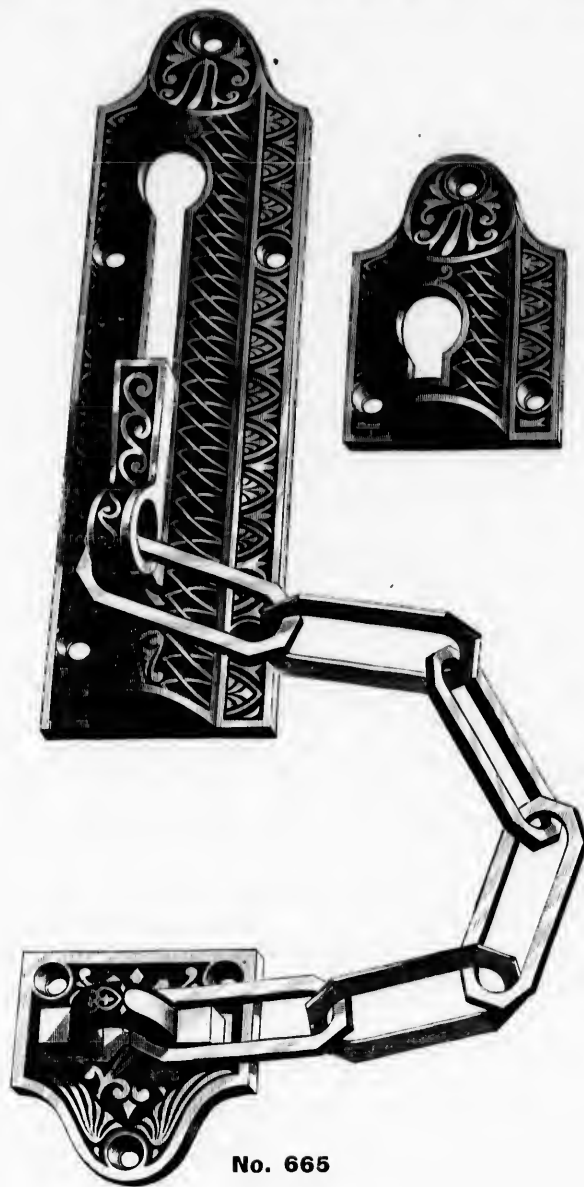
POLISHED BRONZE

Length,	6 in.	8 in.	9 in.	12 in.	18 in.	24 in.	30 in.	36 in.	42 in.	48 in.
Price each	\$0 95	\$1 05	\$1 15	\$1 35	\$1 70	\$2 40	\$3 00	\$3 30	\$3 85	\$4 50

The above are made in extra lengths to order. Packed complete with screws.

- Prices of Mortise Bolts on Application -

- Extra Heavy -
Bronze Chain Door Fasteners



No. 665

No.	Size.	DESCRIPTION.	Each.
665	6	Ornamental Bronze, with Solid Bronze Link Chain	\$1 90
666	5	Ornamental Bronze. Similar to No. 665.	1 35
667	4	Ornamental Bronze. Similar to No. 665.	1 10
5665	6	Polished Bronze. Similar to No. 665.	2 25
5666	5	Polished Bronze. Similar to No. 666.	1 45
5667	4	Polished Bronze. Similar to No. 667.	1 30

The above are made in extra lengths to order. Packed complete with screws.

Price each	\$0 95	\$1 05	\$1 15	\$1 35	\$1 70	\$2 40	\$3 00	\$3 85	\$5 50
------------	--------	--------	--------	--------	--------	--------	--------	--------	--------

ORNAMENTAL AND
Polished Bronze Barrel Bolts
 - EXTRA HEAVY -



Bolt No. 660

No.	Size.	DESCRIPTION.	PER DOZ.
660	3	Ornamental Bronze Case and Strike. Bronze Bolt,	\$6 50
660	4	Ornamental Bronze Case and Strike. Bronze Bolt,	7 50
660	5	Ornamental Bronze Case and Strike. Bronze Bolt,	8 50
660	6	Ornamental Bronze Case and Strike. Bronze Bolt,	10 00
5660	3	Similar to above. Polished Bronze,	7 80
5660	4	Similar to above. Polished Bronze,	9 00
5660	5	Similar to above. Polished Bronze,	10 25
5660	6	Similar to above. Polished Bronze,	12 50

olts

Ornamental and Polished
- Chain and Foot Bolts -



Chain Bolt. No. 146.
 (1-2 SIZE CUT.)



Foot Bolt. No. 196.
 (1-2 SIZE CUT.)

- CHAIN BOLTS -

No.	SIZE.	DESCRIPTION.	PER DOZ.
143	3	Ornamental Bronze,	\$7 25
144	4	Ornamental Bronze,	7 90
146	6	Ornamental Bronze	14 00
148	8	Ornamental Bronze,	15 90
5143	3	Polished Bronze,	9 00
5144	4	Polished Bronze,	9 50
5146	6	Polished Bronze,	16 00
5148	8	Polished Bronze,	18 25

- FOOT BOLTS -

No.	SIZE.	DESCRIPTION.	PER DOZ.
193	3	Ornamental Bronze,	\$7 25
194	4	Ornamental Bronze,	7 90
196	6	Ornamental Bronze,	14 00
198	8	Ornamental Bronze,	15 90
5193	3	Polished Bronze,	9 00
5194	4	Polished Bronze,	9 50
5196	6	Polished Bronze,	16 00
5198	8	Polished Bronze,	18 25

R Doz.

50
 50
 8 50
 0 00
 7 80
 9 00
 0 25
 2 50

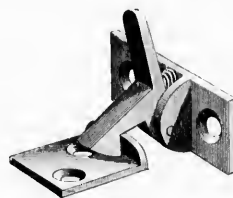
ORNAMENTAL AND
Polished Bronze Finger Plates



Finger Plate. No. 989.
(1-3 SIZE.)

No.	SIZE.	DESCRIPTION.	EACH.
989	12 x 3 $\frac{3}{4}$	Ornamental Bronze. Illustrated above,	\$2 10
987	12 x 3 $\frac{3}{4}$	Ornamental Bronze. Same as No. 989, without Ornamental Centre.	2 10
988	12 x 3 $\frac{3}{4}$	Ornamental Bronze. Same as No. 989, with word "Push."	2 10
5987	12 x 3 $\frac{3}{4}$	Polished Bronze. Same outline as No. 989,	1 60

Polished Bronze Inside Cupboard Catch

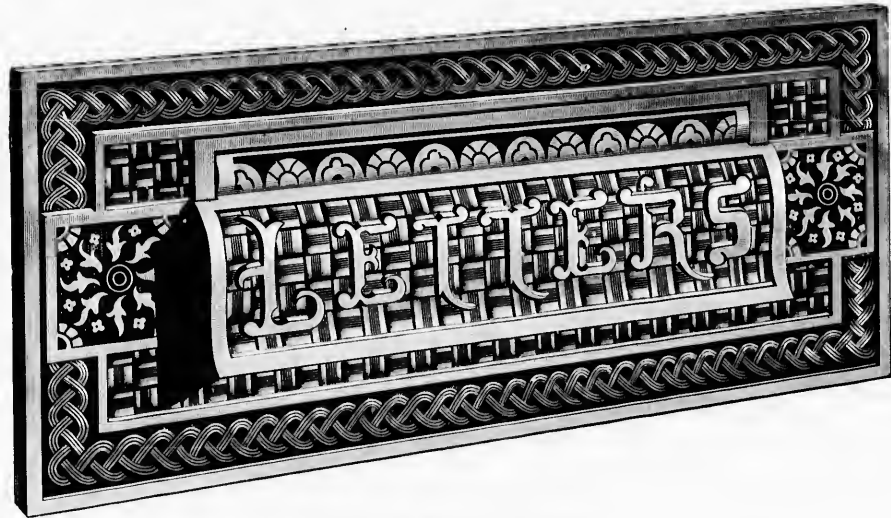


Inside Cupboard Catch. No. 679.

No.	DESCRIPTION.	PER DOZ.
679	Bronze Inside Cupboard Catch,	\$3 65

ates

ORNAMENTAL AND
Polished Bronze Letter Plates



Letter Plate No. 7840

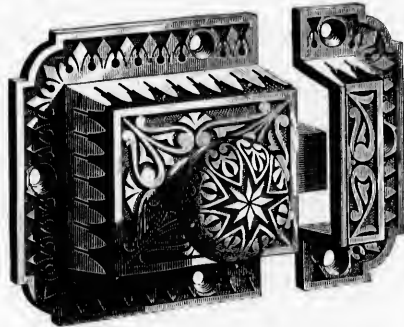
No.	Size of Plate.	Size of Opening.	DESCRIPTION.	EACH.
7840	3 1/4 x 7 1/4	1 1/2 x 4 1/2	Ornamental Bronze. Complete with Rods and Nuts, - - - - -	\$1 75



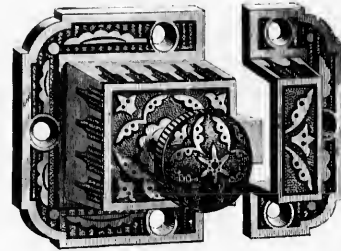
Letter Plate. No. 920

No.	Size of Plate.	Size of Opening.	DESCRIPTION.	EACH.
920	3 1/4 x 7 1/4	1 1/2 x 4 1/2	Ornamental Bronze. Complete with Rods and Nuts, - - - - -	\$0 90
925	3 x 7	1 1/2 x 4 1/4	Ornamental Bronze, with Screws, - - - - -	0 60
5920	3 1/4 x 7 1/4	1 1/2 x 4 1/2	Same as 920. Polished Bronze, - - - - -	1 50

Ornamental and Polished
- Bronze Cupboard Turns -



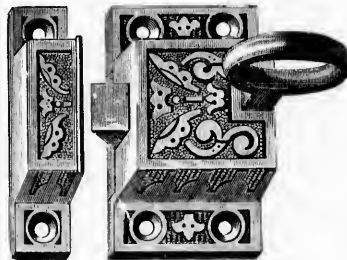
Cupboard Turn. No. 685



Cupboard Turn. No. 683

No.	DESCRIPTION.	PER DOZ.
685	Ornamental Bronze. Very Heavy,	\$7 25
684	Ornamental Bronze. Medium Size,	6 25
683	Ornamental Bronze,	5 75
5685	Similar to 685; Polished,	7 75
5684	Similar to 684,	6 75
5683	Similar to 683,	6 25

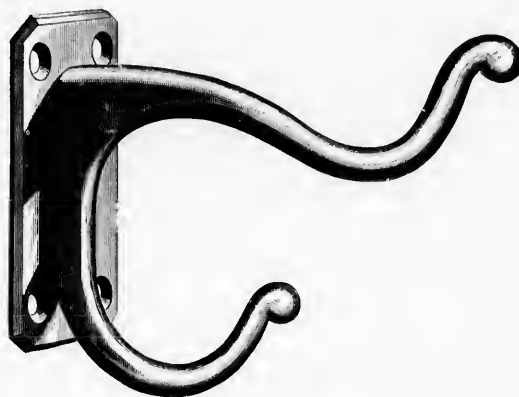
- ORNAMENTAL AND -
Polished Bronze Rim Transom Catches



Catch. No. 786

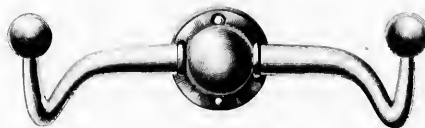
No.	DESCRIPTION.	PER DOZ.
786	Ornamental Bronze Rim Transom Catch, with Ring. Extra Heavy,	\$5 50
5786	Polished Bronze. Same as No. 786,	8 50

Polished Bronze
 - *Coat and Hat Hooks* -



Hook. No. 94

No.	DESCRIPTION.	PER DOZ.
94	Polished Bronze,	\$3 75



Cow Horn Hook. No. 116
 1-2 SIZE CUT

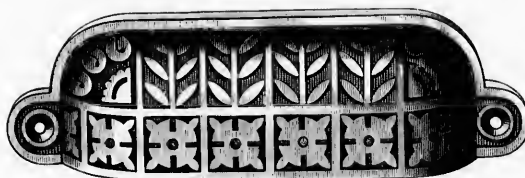
No.	DESCRIPTION.	PER DOZ.
116	Polished Bronze Coat and Hat Hook,	\$15 00

ORNAMENTAL AND
Polished Bronze Drawer Pulls



Drawer Pull. No. 852

No.	DESCRIPTION.	PER DOZ.
852	Ornamental Bronze, - - - - -	\$3 00
5852	Similar to above, Polished Bronze, - - - - -	3 25



Drawer Pull. No. 854

No.	DESCRIPTION.	PER DOZ.
854	Ornamental Bronze - - - - -	\$2 85
5854	Similar to No. 854, Polished Bronze, - - - - -	3 25

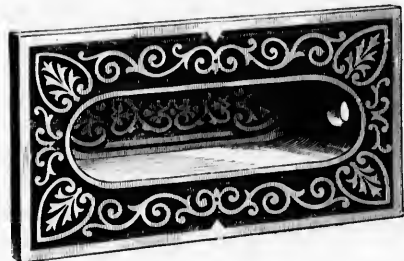


Pull. No. 1088 1-2

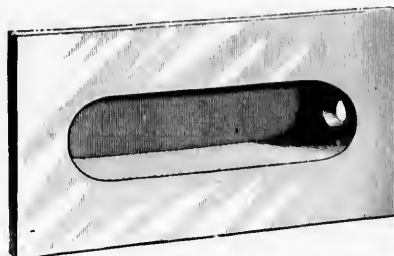
No.	DESCRIPTION.	PER DOZ.
1089 $\frac{1}{2}$	Bronze Drawer or Door Pull. 3 $\frac{3}{8}$ in., - - - - -	\$4 50
1088 $\frac{1}{2}$	" " " These are very much used for light doors, - - - - -	5 50

ulls

Ornamental and Polished
- Bronze Flush Sash Lifts -



Sash Lift. No. 800



Sash Lift. No. 1105

No.	DESCRIPTION.	PER DOZ.
800	Ornamental Bronze,	\$3 50
1105	Polished Bronze,	3 50

Doz.

00

25

R Doz.

85

25

Ornamental and Polished Bronze Hook Sash Lifts



Hook Sash Lift. No. 1116

No.	DESCRIPTION.	PER DOZ.
1116	Ornamental Bronze,	\$1 25
1103	Polished Bronze. Hook Lifts similar to No. 1116,	1 75

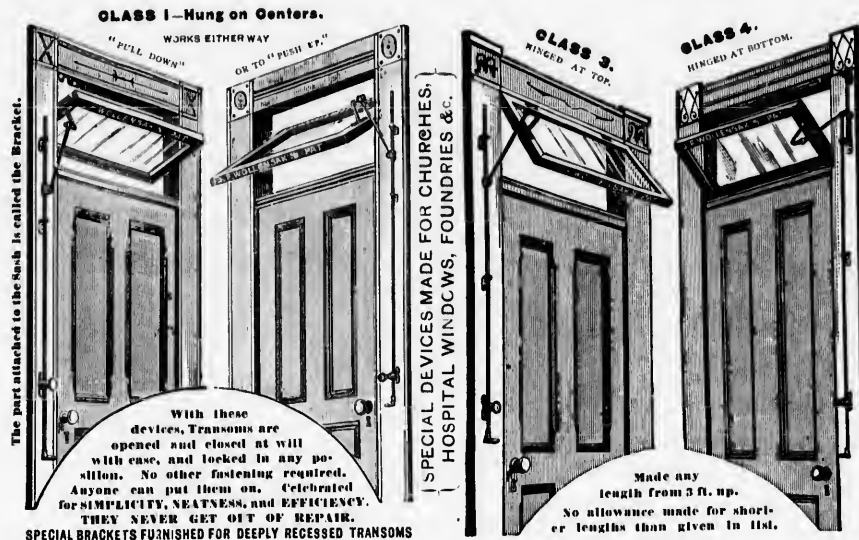
R Doz.

1 50

5 50

WOLLENSAK'S

- Patent Transom Lifters -



Classes 1 and 3 are the same device, used in three ways, as shown in cuts. All the lifters shown here are reversible from right to left side. Place the Lifter on side next to the door knob, and near the edge of the finish.

Special attention is called to the Spring on "CLASS 4" Lifters which receives the shock and prevents sash and glass from breaking, should the Transom be allowed to fall suddenly through carelessness. To ascertain the necessary length of Lifters, measure all Transoms where the upper part of the sash opens down, from a point on the sash where the bracket is screwed, to within five feet of the floor, and for all Transoms where the lower part of the sash swings up, to within four feet of the floor, take these measurements with the **SASH CLOSED**. Heavy Transoms when hinged at the bottom or top should have a Lifter on each side. When ordering **PARTS** always mention the size Lifters they are wanted for.

Size of Rod	1/4 For Light Dwelling Transoms		5/16 For Medium Size Office Transoms		3/8 For Store Transoms		1/2 For Heavy Store Transoms	
	Bronzed Iron Each.	Bronze Metal Each.	Bronzed Iron Each.	Bronze Metal Each.	Bronzed Iron Each.	Bronze Metal Each.	Bronzed Iron Each.	Bronze Metal Each.
3 feet	90	2 25	1 35	2 80				
4 "	1 05	2 55	1 50	3 15	2 00	4 10		
4 "	1 20	2 85	1 65	3 50	2 20	4 55	3 15	6 00
5 "			1 80	3 85	2 40	5 00	3 40	6 50
6 "	1 35	3 15	1 95	4 20	2 60	5 45	3 65	7 00
7 "	1 50	3 45	2 10	4 55	2 80	5 90	3 90	7 50
8 "					3 00	6 35	4 15	8 00
9 "					3 20	6 80	4 40	8 50
10 "								
Each Extra Foot	15	30	15	35	20	45	25	50

Brass and Nickel Plated same List as Bronze Metal.
Any Desired Length Made to Order.

Size of Rod	1/4 For Light Dwelling Transoms		5/16 For Medium Size Office Transoms		3/8 For Store Transoms		1/2 For Heavy Store Transoms	
	Bronzed Iron Each.	Bronze Metal Each.	Bronzed Iron Each.	Bronze Metal Each.	Bronzed Iron Each.	Bronze Metal Each.	Bronzed Iron Each.	Bronze Metal Each.
3 feet	1 20	2 65	1 65	3 25				
4 "	1 35	2 95	1 80	3 70	2 40	4 60		
4 "	1 50	3 25	1 95	4 05	2 60	5 05	3 55	6 55
5 "	1 65	3 55	2 10	4 40	2 80	5 50	3 80	7 15
6 "	1 80	3 85	2 25	4 75	3 00	5 95	4 05	7 65
7 "			2 40	5 10	3 20	6 40	4 30	8 15
8 "			2 60	5 45	3 40	6 85	4 55	8 65
9 "			2 80	5 80	3 60	7 30	4 80	9 15
10 "								
Each Extra Foot	15	30	15	35	20	45	25	50

Brass and Nickel Plated same List as Bronze Metal.
Any Desired Length Made to Order.

J. F. WOLLENSAK'S PATENT SURFACE SASH CENTERS

No.	DESCRIPTION.	SIZE OF PIN.	SIZE OF FACE.	PER DOZ. SET.
11	Bronze Metal, Ornamental,	1/4 in.	3/4 in.	8 25
11x3	Bronze Metal, Ornamental, Black Inlaid,	1/4 "	3/4 "	4 25
011	Bronzed Iron, Ornamental,	1/4 "	3/4 "	0 65
22	Bronze Metal, Ornamental,	1/4 "	3/4 "	5 55
22x3	Bronze Metal, Ornamental, Black Inlaid,	1/4 "	3/4 "	3 55
022	Bronzed Iron, Ornamental,	1/4 "	3/4 "	0 80
33	Bronze Metal, Ornamental,	1/4 "	3/4 "	8 40
33x3	Bronze Metal, Ornamental, Black Inlaid,	1/4 "	3/4 "	8 40
033	Bronzed Iron, Ornamental,	1/4 "	3/4 "	1 25
44	Bronze Metal, Ornamental,	1/4 "	3/4 "	12 25
44x3	Bronze Metal, Ornamental, Black Inlaid,	1/4 "	3/4 "	12 25
044	Bronzed Iron, Ornamental,	1/4 "	3/4 "	2 00
133	Bronze Metal, Plain,	1/4 "	3/4 "	8 50
144	Bronze Metal, Plain,	1/4 "	3/4 "	12 25
155	Bronze Metal, Plain,	1/4 "	3/4 "	16 50
0155	Bronzed Iron, Plain,	1/4 "	3/4 "	3 50
166	Bronze Metal, Plain,	1/4 "	3/4 "	29 75
0166	Bronzed Iron, Plain,	1/4 "	3/4 "	6 50

Nickel-Plated and Polished Brass same List as Bronze Metal.

PAYSON'S Universal Transom Lifter

EASILY APPLIED



BURGLAR PROOF

(To operate, pull handle towards you, then work up or down.)

- *Bronzed Iron* -

LIST NUMBER.	LENGTH OF ROD.	DIAMETER.	PRICE EACH.	FOR EACH EXTRA FT. OR FRACTION THEREOF, ADD
250	3 feet.	$\frac{1}{4}$	\$0 60	10 cts. per foot.
251	4 "	$\frac{1}{4}$	0 70	
261	4 "	$\frac{3}{16}$	1 10	15 cts. per foot.
262	5 "	$\frac{5}{16}$	1 25	
273	6 "	$\frac{3}{8}$	1 70	20 cts. per foot.
275	8 "	$\frac{3}{8}$	2 10	

Every Lifter can be used on Transoms hung at either top, bottom or center.

These Lifters can also be furnished in Polished Bronze.

PRICES ON APPLICATION

side. Place the
the Transom be
ens down, from a
four feet of the
ordering **PARTS**

Heavy
store
Transoms.
Bronze
Metal
Each.
6 55
7 15
7 65
8 15
8 65
9 15
50
Order

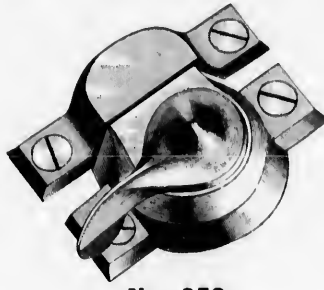
OF	PER DOZ.
in.	SET.
4	\$4 25
4	4 25
0	0 65
5	5 55
3	3 55
0	0 80
8	8 40
8	8 40
1	1 25
12	12 25
12	12 25
2	2 00
8	8 50
12	12 25
16	16 50
3	3 50
29	29 75
6	6 50

- Security Sash Locks -

- Burglar and Dust Proof



Nos. 203, 215, 223



No. 352



Nos. 487, 441

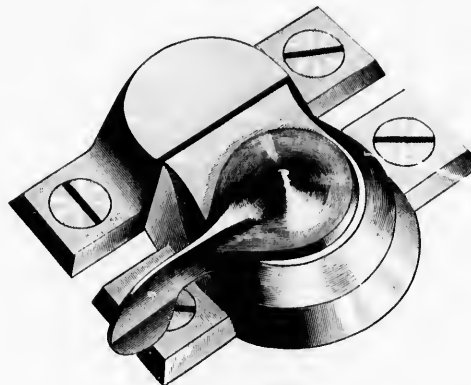
No.	DESCRIPTION.	PER DOZ.
203	Iron, Bronzed,	\$1 25
215	Iron, Bronzed with Bronze Metal Knob,	2 00
223	Real Bronze Metal, No. 3 Finish,	6 00
352	Ogee Tip, Real Bronze Metal, Polished,	6 25
487	Iron, Bronzed, with Nickel Plated Knob,	2 50
441	Iron, Bronzed, with Bronze Metal Knob,	2 50

A single turn of the handle forces the sash up and down; draws the meeting rails closely together; prevents the window from rattling; keeps out the dust and cold air, and locks the window securely.

All the movements are accomplished without the aid of springs, thus avoiding the possibility of getting out of order. Nothing more complete in a Sash Lock made.

Security Lock for Extra Heavy Sashes

- Polished Bronze -

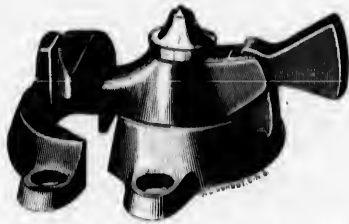


No. 500

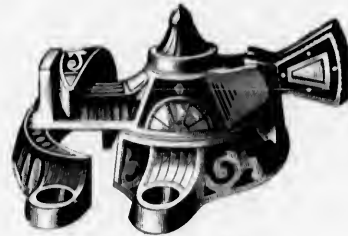
This size is designed for Public Buildings, and has no equal for forcing heavy sashes to their place, and locking them securely.

No.	DESCRIPTION.	PER DOZ.
500	Polished Bronze, very heavy,	\$16 50

- The Triumph Sash Lock -



Nos. 20, 21, 22, 23, 24, 39



Nos. 24 1/2, 25

No.	DESCRIPTION.	PER DOZ.
20	Plain Iron, Japanned, with Iron Rivet,	\$0 90
21	Plain Iron, Japanned, with Brass Rivet,	1 25
22	Plain Iron, Japanned, with Nickel-Plated Rivet and Drop,	1 75
23	Polished Bronze Metal, with Bronze Rivet and Drop,	5 50
24	Polished Bronze Metal. Nickel-Plated,	7 25
39	Iron Laquered, with Iron Rivet,	0 90
24 1/2	Ornamental Iron, Tucker Bronzed. Bronze Metal Rivet and Drop,	1 10
25	Ornamental Polished Iron, Tucker Bronzed. Solid Bronze Metal Rivet and Drop,	2 00

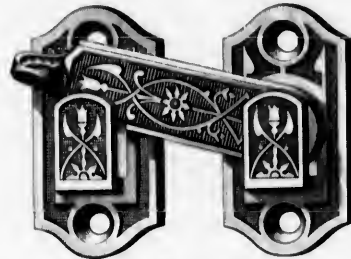
- Heavy Polished Bronze Door Pull -



1-2 SIZE CUT

No.	SIZE.	DESCRIPTION.	PER DOZ.
472	6 in.	Heavy Polished Bronze,	\$13 50

ORNAMENTAL AND
Polished Bronze Shutter Bars



Shutter Bar. No. 623

No.	SIZE.	DESCRIPTION.	PER DOZ.
623	2½	Ornamental Bronze. Reversible,	\$2 35
1008	2½	Polished Bronze. Similar to No. 623,	2 75

Ornamental and Polished Bronze Shutter Knobs



Shutter Knob. No. 1135



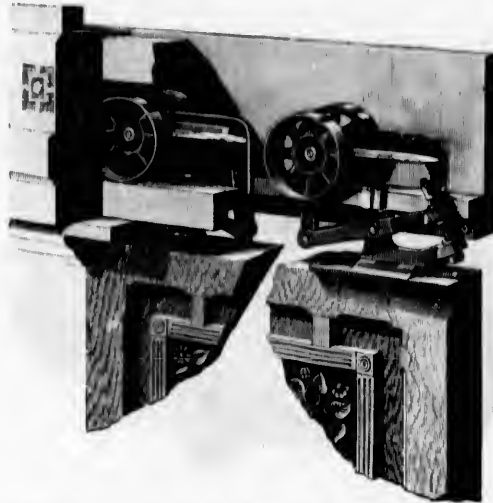
Shutter Knob. No. 1153

No.	SIZE.	DESCRIPTION.	PER DOZ.
1135	1	Ornamental Bronze,	\$1 00
1153	1	Polished Bronze.	1 25

ars

STEARNS'

Anti-Friction Door Hanger



Combines many of the valuable features of "The Warner Hanger," with the "Hatfield" principle of running the axle-pin in a slot. No flanged wheels—no cutting of carpets. No track on the floor, runs noiselessly.

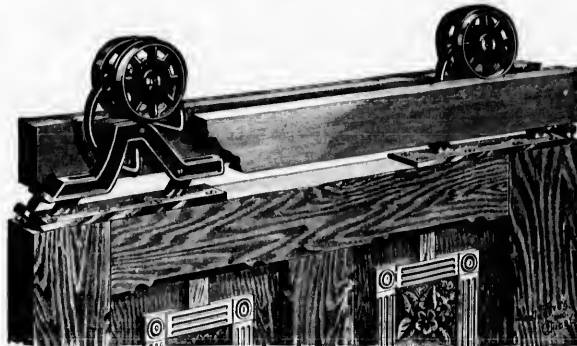
Four Hangers for Double Doors, 28 feet hard wood track.

Price, per set, \$6 25

- *The Standard* -

Flanged - Wheel Parlor Door Hanger

knobs



Made entirely of Malleable Iron and Steel. Wheels never shifting on rebound of door. Applicable to any door without cutting or mortising.

ABSOLUTELY ANTI - FRICTION

Price, per set, complete, \$6 00

Doz.
35
75

r Doz.
00
25

Ornamental and Polished Bronze Face
Anti-Friction Axle Pulleys



No.	SIZE.	DESCRIPTION.	PER DOZ.
11	2	Ornamental Bronze Front. Brass Wheel,	\$8 25
11	2½	Ornamental Bronze Front. Brass Wheel,	8 75
13	2	Polished Bronze Front. Brass Wheel,	8 25
13	2½	Polished Bronze Front. Brass Wheel,	8 75

This Pulley has Steel Axle, Turning on Steel Rollers.

We can also supply this Pulley with Square Groove, making it suitable for the "Giant" Metal Chain.

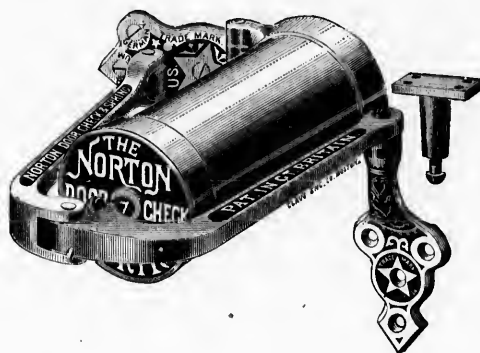
ys

- THE -

Norton Door Check and Spring

Slamming of Doors and Breaking of Glass Rendered Absolutely Impossible.

WE ARE SOLE AGENTS FOR THIS SPRING



Thousands of these are in constant use and giving satisfaction. They will close your doors *without slamming*, and hold them against a strong wind. Adapted to any doors. Be sure and get the "Norton."

There are imitations of this spring being offered here which are perfectly worthless.

The **Norton Door-Checks and Springs** are made in the following sizes, and can be attached to all kinds and styles of doors, gates and skylights.

No.	DESCRIPTION.	PRICE EACH
0	Suitable for doors not exceeding 4 feet in width by 3 inches in thickness,	\$10 00
1	Suitable for doors not exceeding 3½ feet in width by 2½ inches in thickness,	8 50
2	Suitable for doors not exceeding 2 feet 8 inches in width by 2 inches in thickness,	7 50
3	Suitable for doors not exceeding 2 feet 6 inches in width by 1½ inches in thickness,	6 50

Special Springs will be furnished when ordered for storm or other doors subject to very strong draft or high winds.

Chain.

Square Grooved Axle Pulleys

- For Giant Chain -



SPECIAL GROOVE PULLEY.



SIDE VIEW, SPECIAL GROOVE.

SIZE.	DESCRIPTION.	PER DOZ.
2	Square Grooved Pulleys for "Giant" Chain,	\$3 50
2½	Square Grooved Pulleys for "Giant" Chain,	4 00

The above represents our Special Grooved Sash Pulley. It is unquestionably the best article of the kind in the market. They run perfectly true, on large steel axles, are hand turned, and the grooves conform to the shape of the chain. The narrow part of the link runs in the centre groove, and the broader part is supported by the shoulders at the sides, as shown in cut. The Chain runs well over the ordinary pulley, but a first-class wheel in our experience is much the best.

SPECIAL PRICES ON APPLICATION

Basket Pattern Goods

The following pages contain Cuts of a few articles, showing the beauty of these newly designed and very elegant goods. They are made in a full line, prices of which will be furnished on application.

The following finishes are best adapted for use in goods of Basket Pattern.

“C” finish has a Light Brown background, and Polished surface.

“Y” has a Terra Cotta background and Polished surface.

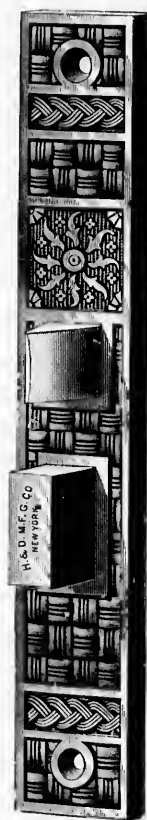
“Z” has a Sage Green background, and Polished surface.

Prices of all Basket Pattern Goods on Application.

- *Basket Pattern Locks* -



Front of Lock. No. 7242



Front of Lock. 7206



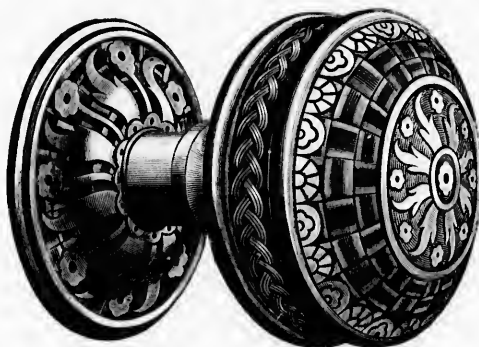
Front of Sliding Door Lock. No. 7354

- PRICES ON APPLICATION -

- *Basket Pattern Goods* -



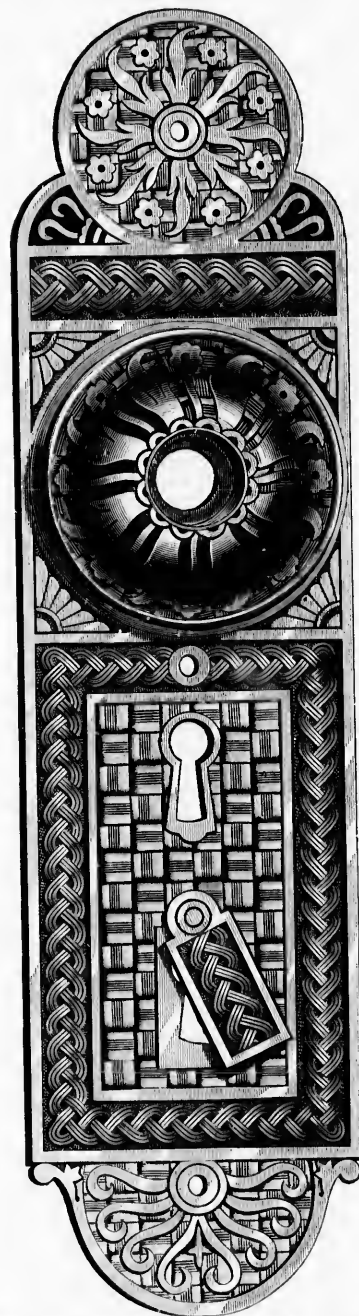
Plate Escutcheon. No. 7529



Door Knob. No. 7002



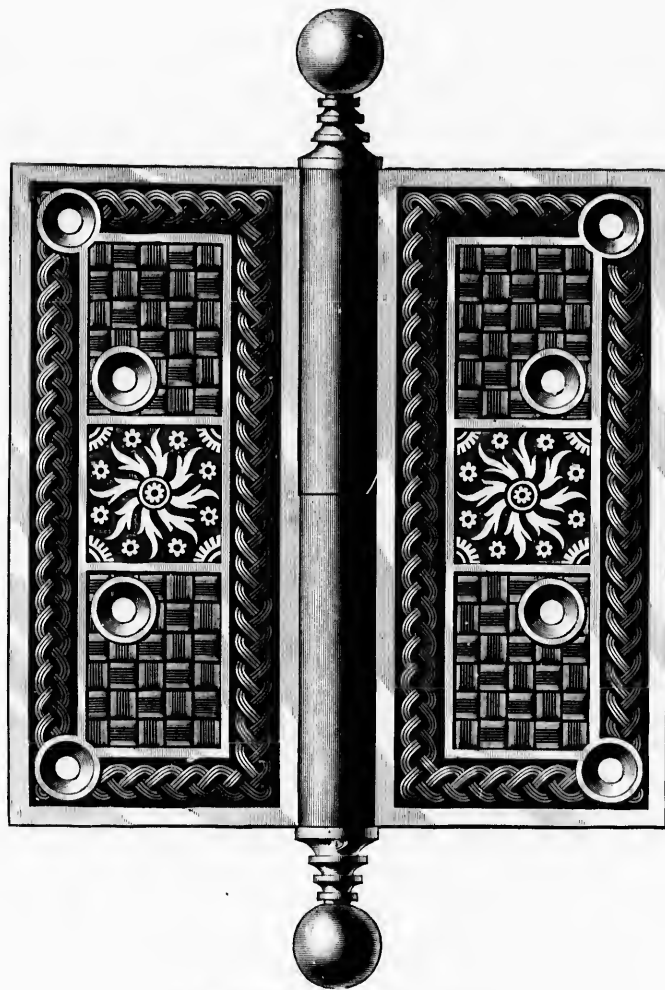
Drawer Pull. No. 7852



Escutcheon and Rose. No. 7942

- PRICES ON APPLICATION -

- *Basket Pattern Butt* -

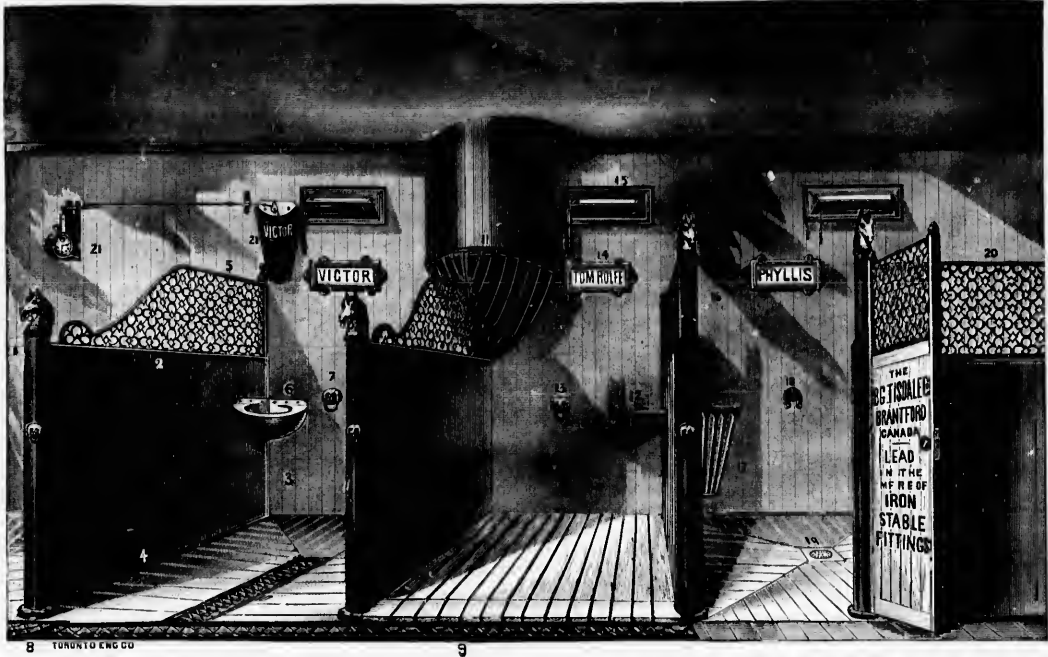


Basket Butt. No. 7009 $\frac{1}{2}$

- *PRICES ON APPLICATION* -

No. 7942

Iron Stable Fitting Department



The above Cut represents our **MODEL STABLE** built at very great expense on the right hand side of main drive on the **TORONTO EXHIBITION GROUNDS**. The building is handsome in every particular, the interior being finished in Ash.

We have much pleasure in calling attention to the many **IMPROVEMENTS** described in this Catalogue of **STABLE FITTINGS**. The prices have been carefully studied and will be found to be as low as is compatible with the best workmanship and materials.

We would respectfully urge intending purchasers, in order to satisfy themselves of the great advantages to be gained in a stable by using these **FITTINGS**, to personally visit and inspect our **MODEL STABLE** on the Exhibition Grounds, failing this call at our Warehouse where the goods are always kept.

Thorough **VENTILATION** and **DRAINAGE** have received special attention.

The "**MAGIC PATENT FEED BOX**" is a most desirable addition to every stable.

Mr. A. B. G. Tisdale, the manufacturer of these Fittings, is a practical horseman himself, and thoroughly acquainted with the requirements of a first-class stable.

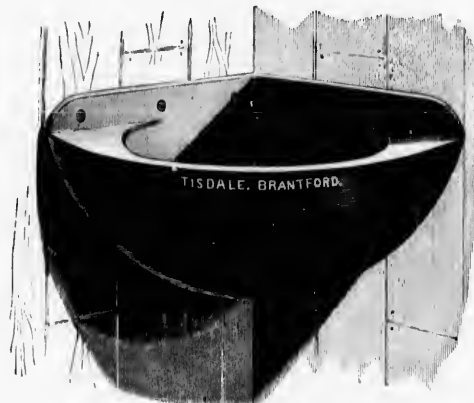
We shall be pleased to give estimates for the Iron Stable Fittings required either to **ARCHITECTS** or **BUILDERS**.

- Iron Stable Fittings -



Magic Patent Feed Box.

Price, Jap'd, each \$3 00



Corner Feed Box, with Extra Large Food Guard. No. 532

Price, Jap'd, each \$2 00



Clean-out Feed Box. No. 524
With Moveable Bottom.

Price, Jap'd, each \$3 25



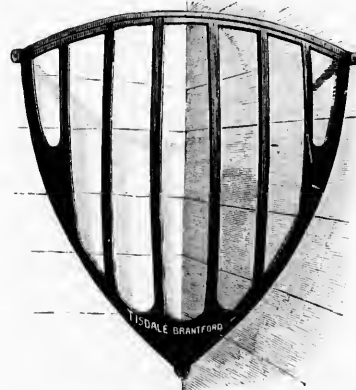
Oblong Feed Box. Size 22 in. long, 15 1-2 wide, 9 1-2 deep. No. 544

Price, Painted, each \$3 25



Lowdown Corner Hay Rack. No. 573

Price, Jap'd, each \$2 75



Corner Hay Rack. No. 568

Price, Painted, each \$2 50

drive on the
being finished

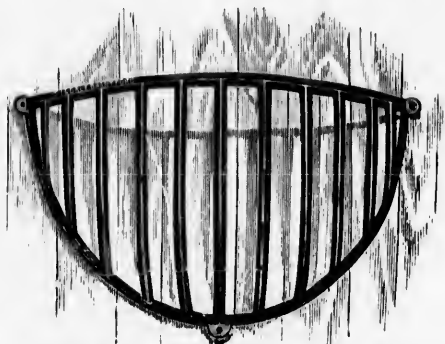
Catalogue of
little with the

gained in a
tion Grounds,

nted with the

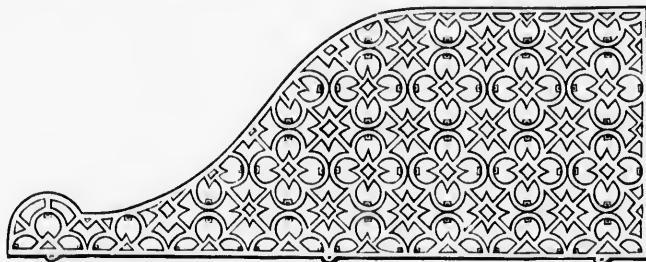
BUILDERS.

- Iron Stable Fittings -



Half Circle Hay Rack. No. 580

Price, Painted, each \$3 50

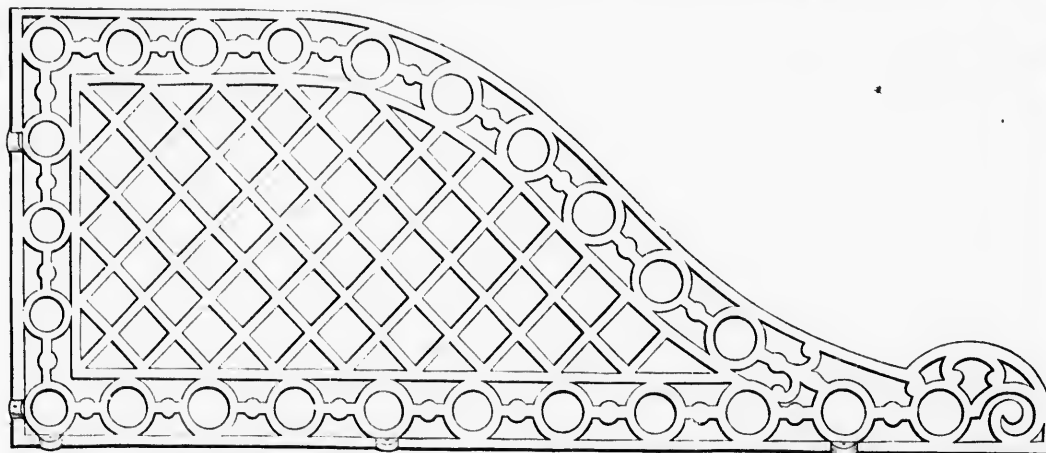


Open Stall Guard. 7 ft. long, 2 ft. 4 in. high. No. 597

Price, Painted, each \$5 00

Box Stall Guard to match above Pattern. No. 5100

Price, Painted, per foot \$1 25



Open Stall Guard. 5 ft. 10 in. long, 2 ft. 4 in. high. No. 598

Price, painted, each \$5 00

Box Stall Guard to match above Pattern. No. 5101

Price, Painted, per foot \$1 25

- Iron Stable Fittings -



Cap Rail and Floor Sill. No. 5158.

For Partitions Grooved to receive 2 in. dressed plank.

Price, painted, per ft., \$0 30.



Wall Strip. No. 5160

Grooved to receive 2 inch dressed plank.

Price, painted, \$2 25.



Horse Head Stall Post. No. 5172

With Nickel Plated Rings. Grooved to receive 2 in. plank.

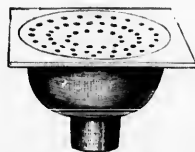
Price, Painted, complete with Rods, \$8 50.



Horse Head Box Stall Post. No. 5172 B

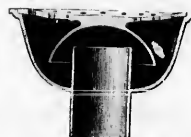
Grooved to receive 2 in. plank.

Price, Painted, complete with Rods, \$12 50.



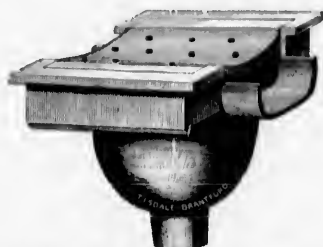
Ossespool with Bell Trap. No. 5242

Price Painted, each - - \$3 75



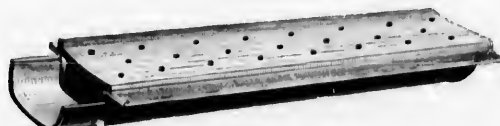
Sectional view of Bell Trap. No. 5242

- Iron Stable Fittings -



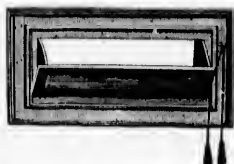
Heavy Cesspool. No. 5202
To connect with Gutter.

Price, Painted, each \$6 00



Heavy Stable Cutter and Cover. No. 5208

Price, Painted, per ft., \$1 55



Ventilator for Wall. No. 5273

Price, Jap'd, each . . . \$1 25



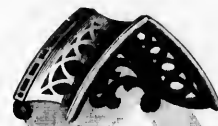
Hames Bracket. No. 5302

Price, Jap'd, each . . . \$0 75



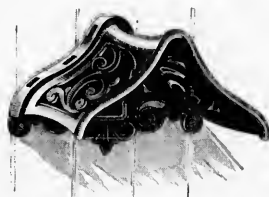
Bridle Bracket. No. 5318

Price, Jap'd, each . . . \$1 50



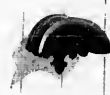
Collar Bracket. No. 5322

Price, Jap'd, each . . . \$1 25



Light Harness Saddle Bracket. No. 5323

Price, Jap'd, each . . . \$1 50



Crupper Bracket. No. 5321

Price, Jap'd, each . . . \$0 60

- Iron Stable Fittings -



Collar Bracket. No. 5320

Price, Jap'd, each . . . \$1 75



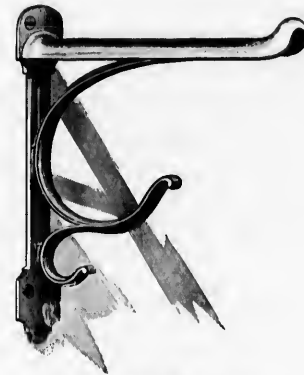
Lines Bracket. No. 5319

Price, Jap'd, each . . . \$1 65



**Riding Saddle and Bridle Bracket.
No. 5331**

Price, Jap'd, each . . . \$1 50



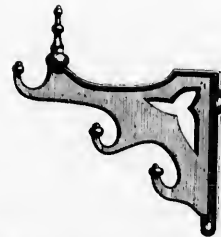
**Harness Bracket.
No. 5320**

Price, Jap'd, each . . . \$1 00



Gentleman's Saddle Bracket. No. 5335
Malleable Iron.

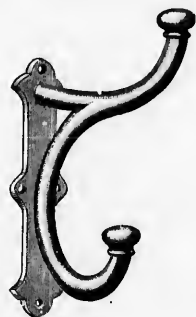
Price, Jap'd, each . . . \$1 75



**Oiling and Washing Bracket.
No. 5342**

Price, Jap'd, each . . . \$0 75

- Iron Stable Fittings -



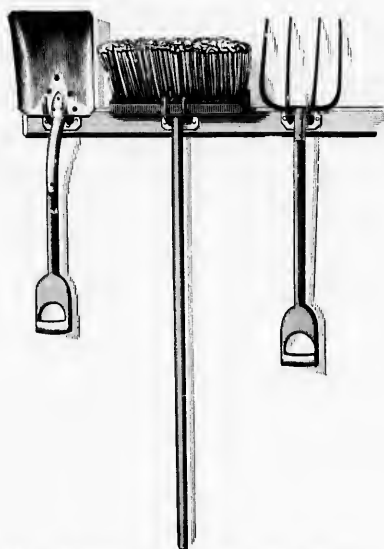
Harness Hook. No. 5362

Price, Jap'd, each - - - \$1 25



Harness Hook. No. 5357

Price, Jap'd, each - - - \$0 75



Implement Hooks. No. 5370

Price, Jap'd, each - - - \$0 50



Pole Bracket. No 5415

Price, Jap'd, per pair \$2 00



Broom Holder. No. 5410

Price, Jap'd, each - - - \$0 40



Blanket Bracket. No. 5423

Price, Jap'd, per pair - - - \$1 50

- Iron Stable Fittings -



Salt Dish. No. 5442

Price, Jap'd, each . . . \$1 00



Sponge Box. No. 5451

Price, Jap'd, each . . . \$1 50



Box Stall Hinge. No. 5537

Price, per pair \$4 00



Tie Plate. No. 5497

Price, Jap'd, each \$0 75



Tie Ring. No. 5489

Price, Jap'd, each \$0 40



Tie Ring. No. 5490

Price, Jap'd, each \$0 50

LEARY'S IRON FIRE ESCAPE

We would call special attention to this very essential addition to every building of two Stories and over.

It is a simply constructed Iron Ladder, perfectly safe, durable and inexpensive, easily attached to any building.

We will be pleased to give estimates for supplying this Fire Escape to any building either during erection or on one already erected.

There has been a large number of these FIRE ESCAPES placed on Toronto buildings lately, and are giving perfect satisfaction.

Send for Descriptive Circular and Price List.

We are Sole Agents for the Leary Fire Escape.

