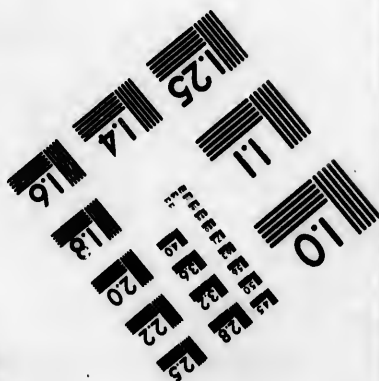
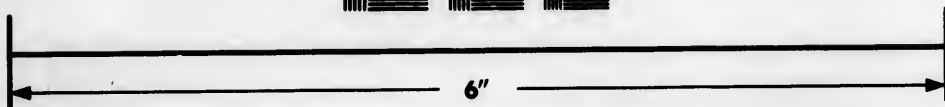
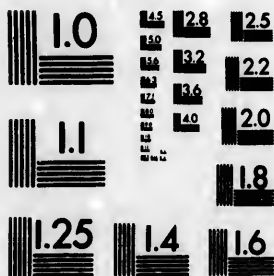


**IMAGE EVALUATION
TEST TARGET (MT-3)**



**Photographic
Sciences
Corporation**

23 WEST MAIN STREET
WEBSTER, N.Y. 14580
(716) 872-4503

LE 128
SER 122
LE 120
LE 118

**CIHM/ICMH
Microfiche
Series.**

**CIHM/ICMH
Collection de
microfiches.**



Canadian Institute for Historical Microreproductions / Institut canadien de microreproductions historiques

ii
01
SER

© 1984

Technical and Bibliographic Notes/Notes techniques et bibliographiques

The Institute has attempted to obtain the best original copy available for filming. Features of this copy which may be bibliographically unique, which may alter any of the images in the reproduction, or which may significantly change the usual method of filming, are checked below.

L'Institut a microfilmé le meilleur exemplaire qu'il lui a été possible de se procurer. Les détails de cet exemplaire qui sont peut-être uniques du point de vue bibliographique, qui peuvent modifier une image reproduite, ou qui peuvent exiger une modification dans la méthode normale de filmage sont indiqués ci-dessous.

- Coloured covers/
Couverture de couleur
- Covers damaged/
Couverture endommagée
- Covers restored and/or laminated/
Couverture restaurée et/ou pelliculée
- Cover title missing/
Le titre de couverture manque
- Coloured maps/
Cartes géographiques en couleur
- Coloured ink (i.e. other than blue or black)/
Encre de couleur (i.e. autre que bleue ou noire)
- Coloured plates and/or illustrations/
Planches et/ou illustrations en couleur
- Bound with other material/
Relié avec d'autres documents
- Tight binding may cause shadows or distortion
along interior margin/
La reliure serrée peut causer de l'ombre ou de la
distortion le long de la marge intérieure
- Blank leaves added during restoration may
appear within the text. Whenever possible, these
have been omitted from filming/
Il se peut que certaines pages blanches ajoutées
lors d'une restauration apparaissent dans le texte,
mais, lorsque cela était possible, ces pages n'ont
pas été filmées.
- Additional comments:/
Commentaires supplémentaires:

- Coloured pages/
Pages de couleur
- Pages damaged/
Pages endommagées
- Pages restored and/or laminated/
Pages restaurées et/ou pelliculées
- Pages discoloured, stained or foxed/
Pages décolorées, tachetées ou piquées
- Pages detached/
Pages détachées
- Showthrough/
Transparence
- Quality of print varies/
Qualité inégale de l'impression
- Includes supplementary material/
Comprend du matériel supplémentaire
- Only edition available/
Seule édition disponible
- Pages wholly or partially obscured by errata
slips, tissues, etc., have been refilmed to
ensure the best possible image/
Les pages totalement ou partiellement
obscurcies par un feuillet d'errata, une pelure,
etc., ont été filmées à nouveau de façon à
obtenir la meilleure image possible.

This item is filmed at the reduction ratio checked below/
Ce document est filmé au taux de réduction indiqué ci-dessous.

10X	12X	14X	16X	18X	20X	22X	24X	26X	28X	30X	32X
<input type="checkbox"/>	<input type="checkbox"/>	<input type="checkbox"/>	<input type="checkbox"/>	<input type="checkbox"/>	<input type="checkbox"/>	<input checked="" type="checkbox"/>	<input type="checkbox"/>	<input type="checkbox"/>	<input type="checkbox"/>	<input type="checkbox"/>	<input type="checkbox"/>

The copy filmed here has been reproduced thanks to the generosity of:

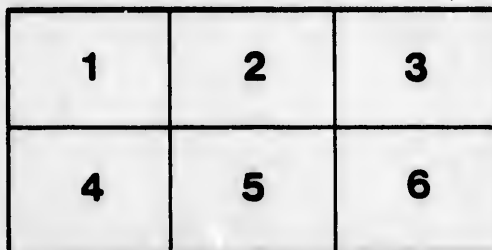
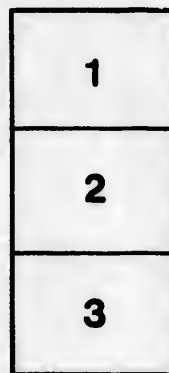
New Brunswick Museum
Saint John

The images appearing here are the best quality possible considering the condition and legibility of the original copy and in keeping with the filming contract specifications.

Original copies in printed paper covers are filmed beginning with the front cover and ending on the last page with a printed or illustrated impression, or the back cover when appropriate. All other original copies are filmed beginning on the first page with a printed or illustrated impression, and ending on the last page with a printed or illustrated impression.

The last recorded frame on each microfiche shall contain the symbol \rightarrow (meaning "CONTINUED"), or the symbol ∇ (meaning "END"), whichever applies.

Maps, plates, charts, etc., may be filmed at different reduction ratios. Those too large to be entirely included in one exposure are filmed beginning in the upper left hand corner, left to right and top to bottom, as many frames as required. The following diagrams illustrate the method:



L'exemplaire filmé fut reproduit grâce à la générosité de:

New Brunswick Museum
Saint John

Les images suivantes ont été reproduites avec le plus grand soin, compte tenu de la condition et de la netteté de l'exemplaire filmé, et en conformité avec les conditions du contrat de filmage.

Les exemplaires originaux dont la couverture en papier est imprimée sont filmés en commençant par le premier plat et en terminant soit par la dernière page qui comporte une empreinte d'impression ou d'illustration, soit par le second plat, selon le cas. Tous les autres exemplaires originaux sont filmés en commençant par la première page qui comporte une empreinte d'impression ou d'illustration et en terminant par la dernière page qui comporte une telle empreinte.

Un des symboles suivants apparaît sur la dernière image de chaque microfiche, selon le cas: le symbole \rightarrow signifie "A SUIVRE", le symbole ∇ signifie "FIN".

Les cartes, planches, tableaux, etc., peuvent être filmés à des taux de réduction différents. Lorsque le document est trop grand pour être reproduit en un seul cliché, il est filmé à partir de l'angle supérieur gauche, de gauche à droite, et de haut en bas, en prenant le nombre d'images nécessaire. Les diagrammes suivants illustrent la méthode.

1871
1872
1873
1874
1875
1876
1877
1878
1879
1880
1881
1882
1883
1884
1885
1886
1887
1888
1889
1890
1891
1892
1893
1894
1895
1896
1897
1898
1899
1900

GEOG

R.

LAURIE'S
CATALOGUE
OF
CHARTS.

AND OTHER

NAUTICAL WORKS.

GEOGRAPHICALLY AND ALPHABETICALLY ARRANGED.

LONDON:
PRINTED AND PUBLISHED BY AND FOR
R. H. LAURIE, 53, FLEET STREET.
1861.

THE CHARTER

OF THE

UNION

AND

THE

THE Charter
from actual
Government
which they

From the
of them, they
demands.

They are d
and no pains
to be substan

In order
their C
many

P R E F A C E.

THE Charts enumerated in the succeeding pages are, for the most part, composed from actual and minute Surveys, made either by the British nation, by foreign Governments, or by individuals of known reputation; and the Authorities upon which they lay claim to consideration are acknowledged on each.

From the constant care taken to avoid error, and to supply deficiency in the whole of them, they are believed to merit that confidence which the nature of such works demands.

They are diligently and promptly corrected from the latest attainable information, and no pains are spared in the collection of this from all quarters. They are believed to be substantially correct at the date of their issue.

In order to prevent mistakes, CORRESPONDENTS are requested to be particular in giving their Orders according to the PRESENT, instead of referring to any FORMER Catalogue; many NEW ARTICLES having been introduced which have not before appeared.

CONTENTS.

	PAGE
I. General Charts	1
II. Coasts of the British Islands	5—9
1. The Thames and Southern Coasts	5
2. Western Coasts	7
3. Eastern Coasts	11
III. The North Sea, and its Eastern Coasts	9
IV. The Baltic Sea, &c.	10
V. France, Spain, Portugal, and the Mediterranean	11
VI. West Coast of Africa, and Atlantic Islands	13
VII. The Eastern Coasts of North America.....	14
VIII. West Indies, Gulf of Mexico, Coast of Colombia, &c.	16
IX. Brazil, &c.	18
X. Indian Ocean	19
XI. Oriental Archipelago, and China Sea	21
XII. Australia, and Pacific Ocean.....	22
XIII. Nautical Directories	23
Miscellaneous Works.....	26
Alphabetical Index to Charts	32

1. A LA
Proj
gator
minat
time p
Wilke
 Beech
 Distar
 additi
 grand
 Mounted
 Mounted

 TH
 of Mo
 which
 World
 work
 also g
 without
 annex

2. The WO
 Chart.
 paper.
 Mounted o
 Mounted in

A Smaller
 paper, ve
 Mounted in

3. The NOR
 other Ph
 explanat
 Or each she
 On cloth, ro
 The geogra
 ment su
 attainabl
 It has been
 attention
 of which
 tical form

LAURIE'S CATALOGUE.

PAGE

..... 1

..... 5-9

..... 5

..... 7

..... 11

..... 9

..... 10

..... 11

..... 13

..... 14

..... 16

..... 18

..... 19

..... 21

..... 22

..... 23

..... 26

..... 32

1.—GENERAL CHARTS.

£ s. d.

- 1. A LARGE and ELEGANT CHART of the WORLD, on Mercator's Projection; with the Tracks of the more distinguished modern Navigators, &c., regulated throughout, according to the best scientific Determinations. By JOHN PURDY. With every Discovery to the present time; including those of Flinders, Krusenstern, Kotzebue, Humboldt, Wilkes, FitzRoy, Kellett, Belcher, Hall, Ross, Franklin, Parry, King, Beechey, Back, Simpson, Rae, Kane, Burton, &c. With a Table of Distances, by Sea, from London to all the principal places, and other additions. New Edition, 1861, by A. G. FINDLAY. On four sheets of grand eagle paper..... 2 2 0**
- Mounted on canvas with rollers, full coloured, and bound edges 2 18 0
- Mounted in the same manner, and varnished 3 3 0
- Size, when mounted, 4 ft. 5 in. high, by 6 ft. 4 in. wide.
- This Chart or Map (for it is both) presents a complete and general View of Modern Geography in its present state of improvement. The scale on which it is constructed is of equal magnitude with that of any Chart of the World which has preceded it; and it has been attempted to combine in the work a most accurate detail with the utmost clearness. A simple Scale is also given for the exact admeasurement of Distances, in every direction, without those inconvenient appendages which have sometimes been annexed to works of this description.**
- 2. The WORLD, on Mercator's Projection; reduced from the preceding Chart. New Edition, by A. G. FINDLAY. On one sheet of grand eagle paper. With a Table of Distances, &c., plain, 6s.; coloured 0 6 0**
- Mounted on canvas, with rollers, and varnished 0 15 0
- Mounted in a black frame, and varnished..... 1 0 0
- A Smaller Reduction of the same Chart, on half a sheet of elephant paper, very neatly engraved 0 2 0**
- Mounted in a case for the pocket 0 3 6
- 3. The NORTH ATLANTIC OCEAN, with the Winds, Currents, and other Phenomena. By A. G. FINDLAY, F.R.G.S. On four sheets, with explanatory Notes..... 0 18 0**
- Or each sheet separately 0 4 0
- On cloth, rollers, coloured and varnished 1 14 0
- The geographical features of this Chart are given from the exact Government surveys; the rocks, shoals, and other physical features from all attainable authorities.
- It has been constructed to supply a want which is indicated by the great attention paid of late years to marine meteorology; the accumulated results of which have not as yet been given to the mariner in an entire and practical form for his daily use.

To become acquainted with all that is now known of the influences which effect a ship's course in the North Atlantic, the following most elaborate Charts must be *critically* examined:—Major Rennell's Current Chart, 4 sheets; Maury's Track and Current Charts, 8 sheets; Ditto Thermal Chart, 8 sheets; Ditto Pilot or Wind Chart, 2 sheets; Ditto Trade Wind Chart, 1 sheet; Rain, &c., Chart, 1 sheet; the Magnetic Chart, 2 sheets; or in all, 26 large sheets, besides a great amount of information distributed through many other works.

All these authorities have been laboriously studied and arranged in this Chart, and their teaching rendered intelligible at one view.

Size, when mounted together, 5 ft. 5 in. by 4 ft. 4 in.; or, for greater convenience, it is mounted in two parts, North and South, 8s. each, (or with the Book, 9s.) Scale, 1 degree = $\frac{1}{2}$ of an inch.

[For MEMOIR and DIRECTIONS to accompany this Chart, price 14s., see No. 264 hereafter.]

- 2. A GENERAL CHART of the ATLANTIC OCEAN, according to the Observations, Surveys, and Determinations of the most eminent Navigators, British and Foreign; from a Combination of which the whole has been deduced, by the late JOHN PURDY. With particular Plans of the Roadstead of Angra, Terceira, Ponta Delgada, St. Michael's; of the Channel between Fayal and Pico, Santa Cruz to Funchal, &c. On four large sheets, in two parts, North and South 0 12 0
- 5. The Two Northern Sheets of the Atlantic, No. 4, above, comprehending the Navigation from the British Isles on one side, to the Chesapeake the other, including New York, &c. 0 6 0
- 6. The Two Southern Sheets of the same, exhibiting the Ocean from the parallel of the Chesapeake to the Straits of Gibraltar, Coast of Guinea, &c., including the West Indies and Mexican Sea 0 6 0
- Or each sheet may be had separately 0 3 0
- 7. The ATLANTIC, or WESTERN OCEAN, with Hudson's Bay and other adjacent Seas; including the Coasts of Europe, Africa, and America, from 65 degrees of North Latitude to the Equator. *Reduced chiefly from the larger Chart by JOHN PURDY. New Edition, by A. G. FINDLAY.* Engraved on two large sheets..... 0 8 0
- On cloth, rollers, coloured and varnished 1 0 0
- 8. The Eastern Sheet of the Reduced Atlantic, No. 7, above, comprizing the British Isles, France, Spain, Portugal, and Africa, to the Equator and the meridian of 42° West 0 4 0
- 9. The Western Sheet of the same, comprizing all the American Coasts and the West Indies, &c., from Latitude 65° North to the Equator 0 4 0
- 10. NORTHERN OCEAN.—*The Northern Ocean, Davis's Strait, Baffin's Bay, Lancaster Sound, &c.*, with the Navigation from Great Britain and Ireland to Spitzbergen and the White Sea, the Tracks of Captain Ross, in 1818, and Captain Parry, 1819, 1820, with the late Arctic Discoveries. Including particular *Charts of the White Sea and its Harbours*, from the Surveys of Admiral Von Dessen; of the Environs of the North Cape; Harbours of Spitzbergen; Isle of Jan Mayen; the Færoe Isles; Wild Isles and Reefs; Disco Island and Bays; Prince Regent's Bay, Port Manvers, &c. 0 12 0
- Memoir and Sailing Directions for the whole. (See No. 268 hereafter) .. 0 4 0

11. ETH
10°
West
Hole
Vides
Calla
with
four
[A

12. The
West
Orino
Island
pagos,

13. The T
from R
the Ca
wich L
Roadste

14. The N.
Western
particul
Juan Fe

15. The N.E.
to Rio J
Good Ho

16. The S.W.
Falkland
and Lima
for proced

17. The S.E.
the Sandv
Good Hop

18. The ETH
Coast of S
No. 11, an
Vidal, P. I
with enlarg
Two large

19. The East
can Coast,
the Bays of

20. The West
Coasts of S
the enlarge

21. The North
to the Rio
Plans of th
Roadstead
Icna, Saldan

GENERAL CHARTS.

11. **ETHIOPIA, or SOUTHERN ATLANTIC OCEAN**, from Latitude 10° N. to the Cape of Good Hope and Cape Horn, including the Western Coast of America to Panama; with particular Plans of St. Helena, the Bays of the Cape of Good Hope, the River Plata, Monte Video, Maldonado, the Port of Valdivia, those of Concepcion, Valparaiso, Callao, and Lima; Guayaquil, and Panama; the Galapagos Isles, &c.; with Views of Land, and other particulars. By JOHN PURDY, On four sheets joined together; or, in two parts, North and South..... 0 16 0
 [For DIRECTIONS to accompany the preceding Chart, see No. 265 hereafter.]
12. The Two Western Sheets of No. 11, preceding, embracing the Western, Southern, and Eastern Coast of South America, from the Rio Orinoco to Panama (round Cape Horn, including the South Shetland Islands), to Rio de la Plata, with enlarged Plans of Panama, Galapagos, Callao, Lima, Valparaiso, Concepcion, Rio Plata, &c. &c. 0 8 0
13. The Two Eastern Sheets of the same, embracing the Brazil Coast from Rio Janeiro to the Equator, the Coast of Africa from Guinea to the Cape of Good Hope, and the Seas South to South Georgia, Sandwich Land, &c.; with Plans of Table Bay, False Bay, the Island and Roadstead of St. Helena, &c. 0 8 0
14. The DIFFERENT SHEETS of the Chart may be had separately, as follow:—
14. The N.W. Sheet of the preceding Chart, No. 11, comprising the Western Coast of South America, from Panama to Valparaiso, with particular Plans of the Bay of Panama, Guayaquil, the Galapagos, Juan Fernandez, the Rio Plata, Monte Video, and Maldonado Bay..... 0 4 0
15. The N.E. Sheet of the Chart, No. 11, comprising the Coast of Brazil to Rio Janeiro, and the African Coasts from Sierra Leone to the Cape of Good Hope, with Plans of the Island and Roadstead of St. Helena 0 4 0
16. The S.W. Sheet of the same Chart, No. 11, comprising Patagonia, the Falkland Islands, and South Shetland; with particular Plans of Callao and Lima, Valparaiso, Concepcion, and Valdivia, and general maxims for proceeding to Chili..... 0 4 0
17. The S.E. Sheet of the same, No. 11, comprising South Georgia and the Sandwich Islands, with Plans of Table Bay and the False Bay of Good Hope..... 0 4 0
18. The ETHIOPIA, or SOUTHERN ATLANTIC OCEAN, and Western Coast of South America, reduced by I. PURDY, from the larger Chart, No. 11, and the recent Surveys of Captains F. W. Owen, A. T. E. Vidal, P. P. King, R. FitzRoy, and other officers of the British Navy; with enlarged Plans of Tierra del Fuego, the Strait of Le Maire, &c. Two large sheets 0 8 0
19. The Eastern Sheet of the preceding Chart, No. 18, including the African Coast, Plans of the Roadsteads of Ascension and St. Helena, and the Bays of Good Hope 0 4 0
20. The Western Sheet of the preceding Chart, No. 18, comprising the Coasts of South America, Falkland Island, and South Shetland, with the enlarged Plans of Tierra del Fuego, &c., before mentioned..... 0 4 0
21. The North and South ATLANTIC OCEANS, from the British Isles to the Rio Plata, Cape of Good Hope, and Algoa Bay; with enlarged Plans of the Harbours of Rio Janeiro, Bahia, Island of Ascension, Roadstead of Ascension, Island of St. Helena, Roadstead of St. Helena, Saldanha Bay, Table Bay, and False Bay 0 10 0

22. An entirely NEW CHART of the **INDIAN and PACIFIC OCEANS**, from the Cape of Good Hope to Cape Horn; with particular Plans of fifty-two of the principal Harbours, on an enlarged scale. Arranged on twelve sheets of double elephant paper; designed by the late Mr. JOHN PUDY, and constructed by A. G. FINDLAY, F.R.G.S. Dedicated to Admiral Sir F. BEAUFORT, F.R.S., &c. &c. A New Edition. Price of the whole..... 2 8 0

These Charts have recently undergone a complete revision, in connection with the Pacific Directory (No. 206), and every attainable source has been consulted in order to make them rigorously exact, in accordance with our present knowledge. In addition to the ordinary features of the Charts of the Pacific Ocean, its Currents and other phenomena will be found to be exhibited on a new system.

23. The **NORTH PACIFIC OCEAN**; being sheets III. IV. V. VI. of the above Chart..... 0 16 0

24. The **SOUTH PACIFIC OCEAN**; being sheets IX. X. XI. XII. of the above Chart..... 0 16 0

25. *The Northern Part of the INDIAN OCEAN, &c.*, from the Red Sea to Kamtschatka, New Guinea, &c., being sheets I. II. III. of the above 0 12 0

26. *The Southern Part of the INDIAN OCEAN, &c.*, from the Cape of Good Hope to Australia and Van Diemen's Land, &c., being sheets VII. VIII. IX. of the above 0 12 0

27. *The Southern Part of the PACIFIC OCEAN—A continuation from New Zealand to Cape Horn and La Plata*, with the Coasts of Chili and Peru; being sheets X. XI. XII. of No. 22 0 12 0

28. The continuation Northward: containing the N.W. Coast of North-west America, Mexico, California, to Japan, China, and the Eastern Archipelago; being sheets IV. V. VI. of No. 22 0 12 0

Each sheet of the above Chart (No. 22) may be had separately at 4s. each, and are described in the ensuing pages under the following numbers:—

209. Sheet I.—The North-eastern Coast of Africa, Arabia, Persia, &c..... 0 4 0

210. Sheet II.—The Coasts of India, Sumatra, Malaya, &c. 0 4 0

228. Sheet III.—The Coast of China, Japan Islands, and Oriental Archipelago .. 0 4 0

258. Sheet IV.—The Northern Pacific Ocean, with its Eastern Isles..... 0 4 0

259. Sheet V.—The Coasts of California, the Oregon Territory, &c..... 0 4 0

261. Sheet VI.—The Western Coasts of Central America 0 4 0

211. Sheet VII.—The Coast of South Africa 0 4 0

212. Sheet VIII.—The Southern Indian Ocean and Kerguelen Land 0 4 0

249. Sheet IX.—The whole Coast of Australia, Van Diemen's Land, &c..... 0 4 0

257. Sheet X.—New Zealand, and Oceanic Islands 0 4 0

260. Sheet XI.—Southern Pacific Ocean, with its Eastern Isles..... 0 4 0

262. Sheet XII.—The West Coast of South America, with its Isles 0 4 0

29. A
N
H
The
30. A T
an
Ca
The s
31. A T
wit
On ch
32. THA
lock
the C
and
Sout
and C
a Sai
33. The S
Ligh
Dow
34. The B
the C
Fran
35. The E
Geor
betw
with
Calai
sey, S
F.R.S
BULL
The sa
36. The E
J. PU
The sam
The sam
of Ch

COASTS OF THE BRITISH ISLANDS.

20. A TRACK CHART of the WORLD; comprehending the whole Navigation of the World for marking a Ship's tracks. On three sheets, lined with blue paper	0 10 0
The same Chart on cloth	0 12 6
20. A TRACK CHART from England and America, round Cape Horn, and including the whole of the Pacific, New Zealand, Australia, Canton, &c.	0 8 0
The same on cloth	0 10 6
21. A TRACK CHART from England to Australia, Canton, &c., lined with blue paper.....	0 4 0
On cloth.....	0 5 0

II.—COASTS OF THE BRITISH ISLANDS.

1.—THE THAMES AND SOUTHERN COASTS.

22. THAMES and MEDWAY, &c., from the Surveys of Admiral Bullock and Captain Washington, and the late Captain Hewett; with the Coast from Folkestone to Orfordness, and the Rivers to London and Rochester; with particular Plans, on enlarged scales, of the SOUTH CHANNELS, ISLE OF THANET, &c.; with the Gabbard Shoals, and Captain Hewett's soundings to the meridian of 2° 10' East. With a Sailing Directory	0 8 0
23. The South Channels of the Thames, from Sea Reach, and the Nore Light-vessel, to Folkestone, with a Plan of Ramsgate Harbour, the Downs, &c.; being the Southern sheet of the above	0 4 0
24. The RIVER THAMES, with the Strait of Dover, &c., showing the Coasts between Beachy Head and Harwich, and the Coasts of France and Belgium between Boulogne and Ostend	0 4 0
25. The ENGLISH CHANNEL, with the Bristol and part of the St. George's Channels. An entirely New Chart, comprising the Coasts between Lowestoff and the River Shannon, Dunkirk, and Brest; with enlarged Plans of the Downs, the Coast of France between Calais and Boulogne, Ushant, Newhaven, Beachy Head, and Pevensy, Shoreham, Portland, Brest, and Cherbourg. By A. G. FINDLAY, F.R.G.S. With Observations on the Tides, by Admiral FREDERICK BULLOCK, R.N., with Directions	0 12 0
The same Chart to Scilly, &c., without the Book of Directions ..	0 8 0
26. The ENGLISH CHANNEL, with Plans of Harbours, &c., by J. PURDY. On a reduced scale. With the Book of Directions.....	0 9 0
The same, without the Book of Directions.....	0 7 0
The same Chart to Scilly, &c., but without the Directions and Bank of Channel Soundings	0 6 0

Laurie's Nautical Catalogue.

£ s. d.

37. The **THREE CHANNELS**—the English, Bristol, and St. George's Channels; showing the Coasts of England and Wales from Hull round to Liverpool, and of Ireland from Dublin to Galway. With Directions 0 12 0
 The same, without the Book of Directions..... 0 10 0
38. The **STRAIT of DOVER**, from Beachy Head to Margate, and from Dieppe to Ostend, with Plans and Harbours 0 6 0
39. The **HARBOURS and ISLANDS of the English Channel, &c.** Being a Collection of Twenty-eight particular Charts, all from accurate Trigonometric Surveys, mostly on a large scale, and arranged on three sheets, uniformly with the general Chart before described, No. 35..... 0 14 0
- Each Sheet may be had separately, as follows:—*
40. **EASTERN HARBOURS of the English Channel**, containing 1. Dungeness to Rye Harbour, with the Shoals adjacent; 2. The Shoals, &c., off Beachy Head; 3. The Isle of Wight and its Environs; 4. Spithead, &c., on a very large scale; 5. The Needles Passage, on a similar large scale; 6. The Isle, Roads, and Race of Portland, with West Bay; 7. Environs of Calais; 8. Havre de Grace and Mouth of the Seine; 9. Harbour of Cherbourg; 10. Port of St. Malo 0 5 0
41. **CENTRAL HARBOURS and CHANNEL ISLANDS**, containing, 1. The Islands of Guernsey, Jersey, Alderney, &c.; 2. Bridport Harbour; 3. The Coast from Lyme Regis to Beer Head; 4. Torbay and Dartmouth; 5. Plymouth Sound, Hamoaze, &c.; 6. Fowey Harbour; 7. St. Austel's or Polkerris Bay; 8. Falmouth Harbour... 0 5 0
42. **WESTERN HARBOURS and Isles of the English Channel, &c.**, containing, 1. Falmouth and St. Ives to the Land's End and Scilly Islands, including Mount's Bay; 2. The Scilly Islands; 3. Harbour of, and Coast near Padstow; 4. Milford Haven; 5. Harbour of Waterford; 6. Harbour of Youghal; 7. Cork Harbour; 8. Harbour of Kinsale; 9. Crook Haven; 10. Bear Haven, in Bantry Bay 0 5 0
43. *The Southern Coasts of England*, from the Owers Light to Plymouth Sound, including the Isle of Wight, Southampton Water, with the Docks, &c., and numerous views of the sea-marks, on a large scale. By the late Mr. WILLIAM PRICE, Master, R.N. Corrected 0 10 6
- Or separately, as follows:—*
44. Coast of Dorsetshire and Devonshire, from St. Alban's Head to Sidmouth.... 0 4 0
45. The Coast of Devonshire, from Exmouth to Rame Head; containing Torbay, Start Bay, Plymouth Sound, and Bigbury Bay 0 4 0
46. Spithead, &c., from the East End of Hayling Island to Stokes Bay; with Bearings and Distances, trigonometrically surveyed by the late Mr. FRANCIS OWEN, M.R.N. 0 4 0
47. The **ISLE OF WIGHT**, with the adjacent Coast between Bognor and Murst Point, including the Owers, Selsea, Portsmouth, Southampton, &c., with separate Plans of Portsmouth Harbour, Southampton Docks, and the Needles Channel, from the recent Surveys by Captains SHERINGHAM, BULLOCK, and others..... 0 5 0

48. Fow
on ad
the
the
La

49. Scilly

50. GUE
from
Jer
Litt
Bo

51. GUE

52. JERS
Sur

53. The B
Capt
An
Dire

54. CHAR
&c.-
Robi
with
Goun
pool
Bay,
sheet

55. The B
the a

56. The Ir
above

57. The Co

58. Wales-
Head
a ver
dart,
origin

59. Milford

60. BRIST
the Is
Wexf
Cork,
of the

COASTS OF THE BRITISH ISLANDS.

	£	s.	d.
48. Fowey Harbour.—A Survey of the Harbour of Fowey, in Cornwall, on a very large scale; with descriptive Notes, showing the peculiar advantages of this excellent Harbour to shipping taken in a gale on the Coast, &c., by Mr. TREFFRY, of Fowey; with a general Chart of the Coast from Plymouth to St. Austel's Bay and appearance of the Land	0	4	0
49. Scilly Islands, with the Soundings and Sailing Marks. See No. 42...	0	5	0
50. GUERNSEY, JERSEY, &c.—A new Chart of the Coast of France, from Cape Levi to Brehat Islands, with the Islands of Guernsey, Jersey, Alderney, &c., including particular Charts of the Great and Little Russel, St. Aubin's Bay, Cherbourg, and St. Malo. With a Book of Directions	0	5	0
51. GUERNSEY, with Sark, Herm, and Jethou	0	2	0
52. JERSEY, with all the surrounding Dangers, according to the late Survey	0	2	0

2.—WESTERN COASTS

53. The BRISTOL CHANNEL, drawn from the Admiralty Surveys of Captains H. M. Denham and F. W. Beechey, R.N. By ISAAC PURDY. An entire new Chart, engraved on two large sheets, with a Book of Directions, describing all the Buoys, Lighthouses, &c.	0	8	0
54. CHART OF ST. GEORGE'S CHANNEL, with the Bristol Channel, &c.—Drawn from the Admiralty Surveys of Captains F. W. Beechey, Robinson, Sheringham, Frazer, Denham, Mudge, and Williams, R.N.; with eleven Plans of Harbours, &c., viz., Frith of Clyde, Greenock, Gourock Bay, Port Glasgow, Whitehaven, Lough Carlingford, Liverpool Bay, and Coast to the Strait of Menai, Lough Larne, Dublin Bay, Belfast Bay, and Holyhead Bay. By I. PURDY. On three sheets. With a Book of Sailing Directions	0	12	0
<i>Each Sheet may be had separately, as follows:—</i>			
55. The Bristol Channel and St. George's Channel, being Sheet I. of the above	0	4	0
56. The Irish Sea, between Liverpool and Dublin, being Sheet II. of the above	0	4	0
57. The Coasts of Scotland and Ireland, being Sheet III. of the above	0	4	0
58. Wales.—The Coast of Pembrokeshire, from Strumble Head to Lenney Head, including the Entrance of Milford Haven, the Smalls, &c., on a very large scale. From the Surveys of Messrs. Mackenzie, Huddart, and Morris, regulated by the Grand Trigonometric and other original Surveys. By Mr. J. OUTHETT	0	4	0
59. Milford Haven. See No. 42	0	5	0
60. BRISTOL to CORK, &c.—The Coasts of England and Wales, from the Isle of Portland to Aberystwith, with the Coast of Ireland from Wexford to Kinsale: including the Navigation between Bristol and Cork, &c. With particular Plans of Mount's Bay and Scilly; Views of the Land, &c.	0	8	0

61. St. GEORGE'S CHANNEL, and THE COAST ALL ROUND IRELAND, &c., with enlarged Plans of Dublin Bay, Belfast Bay, Liverpool, Waterford Harbour, Cork Harbour, and Valentia Harbour. With a new Book of Sailing Directions. A new Chart. By A. G. FINDLAY, F.R.G.S.....	0	10	0
<i>Or each sheet separately</i>	0	4	0
62. Northern Coasts of Ireland, from Dublin to Galway, including England, Scotland, &c., from Anglesey to Islay	0	4	0
63. Southern Coasts of Ireland, from Wicklow to the Shannon, including England, &c., from the Land's End to Bardsey	0	4	0
64. The WEST COAST of SCOTLAND, with the HEBRIDES, &c., with the Coasts of Scotland between Ayr, Glasgow, and Cape Wrath; that of the Coast of Ireland between Glenarm Bay and the Bloody Foreland, and the whole of the Hebrides or Western Islands, with enlarged Plans of the Sound of Mull, the Sound of Jura, and the Sound of Islay. Composed from the recent Admiralty Surveys, and other Documents, by A. G. FINDLAY. With a Book of Sailing Directions	0	8	0
66. The West Coast of Scotland, from the Firth of Clyde, Ailsa Craig, &c., to Ardnamuchan Point; including the North Coast of Ireland ...	0	4	0
67. The West Coast of Scotland, from the Isle of Skye to Cape Wrath; with the Western Islands of Lewis, Harris, &c.	0	4	0
65. The Harbour of Whithorn, on the western side of the entrance of Wigton Bay. Surveyed by Mr. J. Shepherd, of Whitehaven.....	0	3	0
3.—EASTERN COASTS.			
68. The NORTH SEA, upon a large scale (see No. 86)	0	8	0
69. The Southern Part of the North Sea. Two sheets of the Chart, No. 87, exhibiting the Eastern Coasts of England, from Beachy Head to Whitby, with the opposite Coasts of France and the Netherlands, from Cape Griznez to Emden	0	6	0
70. The Harbour and Environs of Harwich, with the Coasts of Essex and Suffolk, from the Western Spitway to Orford Haven, including the Wallet and King's Channel, from the Buoy of the Heaps; with appearances of the Marks, the Lighthouses, &c. Corrected from the Surveys of Captains Washington, Bullock, &c.....	0	4	
71. EASTERN COAST of ENGLAND.—A new Survey of the EASTERN COAST of ENGLAND, from Orfordness to Flamborough Head, with Plans, on enlarged scales, of Yarmouth Roads and the neighbouring Channels, Boston and Lynn Deeps, the River Humber, &c., with Views of the Land. On two sheets. With a Sailing Directory	0	8	
72. EASTERN COAST of ENGLAND, from Orfordness to the Tyne, with Plans of Yarmouth Roads, Lowestoff Roads, the River Humber, Sunderland, Seaham, Tees Bay and Hartlepool, and the Entrance to the Tyne. (<i>New.</i>) On three sheets. With Directions, by A. G. FINDLAY. F.R.G.S.....	0	12	

73. SOU
am
ber
Ha
Lo
F.

74. The
bor
thr
the
and
com
bor
Sea
Fai
tair
Har
Pet
Thu

75. The F
Ber

76. The F

77. The M
Wra

79. Hartle
prov

80. HOLY
and
Island
Office

84. Orkney,
Head
Rock

85. The Isla

III.—T

86. The NO
varied
the re
tions
Berge
Sailing
With

THE NORTH SEA, & ADJACENT

- | | £ | s. | d. |
|---|---|----|----|
| 73. SOUTH-EASTERN COAST OF ENGLAND, between Beachy Head and Flamborough Head, and the Coasts of France and Belgium, between Boulogne and Ostend; with enlarged Plans of Harwich Harbour, the River Humber to Hull, and the course of the Thames to London. A new Chart. With Directions, by A. G. FINDLAY, F.R.G.S. | 0 | 10 | 0 |
| Each sheet may be had separately, price 4s. | | | |
| 74. The EAST COAST of ENGLAND and SCOTLAND, from Flamborough Head to the Orkney Islands, and thence to Cape Wrath. On three sheets of atlas paper. In continuation of Nos. 71 and 73. From the Admiralty Surveys of Captains Hewett, Slater, Johnson, Otter, and Commander George Thomas. By I. PURDY. The first sheet contains enlarged Plans of Newcastle and the Tyne River, Scarborough Bay, Whitby Harbour, Blythe, Hartlepool, and Tees Bay, Seaham Harbour, Sunderland Port, Berwick Harbour, Holy Island, Farn Islands, &c., and Holy Island Harbour. The second sheet contains Leith Roads, Dundee Harbour, Arbroath Harbour, Montrose Harbour, Aberdeen Harbour, Banff and Macduff, Fraserburgh, and Peterhead. The third sheet contains the Frith of Inverness and Thurso Bay. With a Book of Sailing Directions, by A. G. FINDLAY | 0 | 10 | 6 |
| Each sheet of the above Chart may be had separately, viz. :— | | | |
| 75. The Eastern Coast of England, between Flamborough Head and Berwick | 0 | 4 | 0 |
| 76. The East Coast of Scotland, from Berwick and St. Abbs to Banff | 0 | 4 | 0 |
| 77. The North-East Coast of Scotland, from Moray Frith to Cape Wrath, including the Orkney Islands | 0 | 4 | 0 |
| 79. Hartlepool Bay and Town (Coast of Durham), from a recently improved Survey. | 0 | 3 | 0 |
| 80. HOLY ISLAND, &c.—A new Survey of the Coasts of Northumberland and Durham, from Sunderland Point to Berwick, including the Farn Islands, Holy Island, &c. By Captain E. J. JOHNSON, and other Officers of the Royal Navy | 0 | 5 | 0 |
| 84. Orkney, &c.—The North Coast of Scotland, from Cape Wrath to Duncansby Head, with Pentland Frith and the Orkney Islands, including the Nun Rock, &c. | 0 | 4 | 0 |
| 85. The Islands of Shetland, with a particular Chart of the Harbour of Lerwick | 0 | 5 | 0 |

III.—THE NORTH SEA, AND ITS EASTERN COASTS.

- | | | | |
|---|---|---|---|
| 86. The NORTH SEA, upon a large scale; constructed from a great variety of original and accurate Surveys; more particularly those of the respective Governments, adjusted by the best astronomic observations; with particular Plans of the Pentland Frith, the Channels to Bergen, and the Harbour of Christiansand; accompanied by a new Sailing Directory for all the Harbours, &c. By JOHN PURDY. With numerous Appearances of the Land, Lighthouses, &c. | 0 | 8 | 0 |
|---|---|---|---|

87. **The SOUTHERN PART of the NORTH SEA, &c.** Comprehending the Coasts of England from *Beachy Head to Whitby*; with those of France, Germany, &c., from *Cape Grines to the River Hever*; including Hamburg and Bremen; also, particular Plans of the Environs of Orfordness; the Hondt or Western Scheldt to Antwerp, Heligoland, &c. A clear and accurate Chart. See also No. 69. 0 8 0
88. **The COASTS and SANDBANKS of FRANCE, BELGIUM, and the NETHERLANDS,** from Dieppe to the Texel, including the Coast from Beachy Head to Margate, with enlarged Plans of the Harbours of Dieppe, Ostend, Calais, Folkestone, Boulogne, and Dunkerque, from the late Surveys of J. C. Ryk, Van Rhyn, Captain William Hewett, &c. 0 10 6
89. **The Coasts of France, Belgium, &c.,** from Boulogne to the Texel (part of the above Chart), with Plans of the Harbours) 0 9 0
90. **The COASTS of HOLLAND, GERMANY, and DENMARK,** from the Texel to the River Hever; including the River Ems to Emden, with the Elbe, the Weser, and the Eyder; including Husum, Friedrichstadt, Tonningen, Hamburg, and Bremen. Composed from the recent Surveys made by order of the Dutch and Danish Governments. With a new Sailing Directory 0 6 0
91. **The COASTS of NORWAY, from DRONTHEIM to the CATTEGAT.** In five sheets 1 5 0

Or separately, thus:—

92. **The Northern Coast of Norway,** from Halten Island to Christiansand, including the Leed or Channel of Drontheim. From the Trigonometric Survey made by order of the Danish Government..... 0 5 0
93. **The Western Coast of Norway,** from Christiansand to Stadthland, in continuation of the preceding Chart; with Appearances of the Land, &c. 0 5 0
94. **Continuation of the Coast of Norway,** from Stadthland to Blom Island. Same size as the preceding Charts 0 5 0
95. **Farther Continuation of the Coast of Norway,** from Blom Island to Stavanger; on the same scale, and uniform with the three preceding Charts..... 0 5 0
96. **Farther Continuation of the Coast of Norway, &c.,** from Stavanger to Christiania and the Cattegat, including the Skager-Rack or Sleere..... 0 5 0

IV.—THE BALTIC SEA, ETC.

97. **The CATTEGAT, the SOUND, and the BELTS;** compiled and drawn from the Trigonometric Surveys of Denmark, combined with the Nautical Surveys of the Chev. P. De Lövenorn, and with the Swedish Surveys of M. Gustaf Klint; including, also, several original Surveys made by Masters in the British Navy. With enlarged Plans of the Sound and Danish Grounds, Winga Sound, and other principal Harbours; illustrated by numerous Views, &c. With a Sailing Directory 0 12 0

98. The
St
ti

99. The
lan
of
Sa
No

100. The
wi
of

101. The
Ba
ho

V.—E

102. The
orde
cula
tical
3. M
the
of S
bour
of V
a ne

103. The
Seba
of T
Pua
the
Harb
tar, t
rame
of th

104. The
Medi
includ
posed
Royal
Austr
Beauf
Bérar
lined

- | | £ | s. | d. |
|--|---|----|----|
| 98. The SOUND and Danish Grounds, on a large scale; from the late Survey, with the Buoys and various marks as existing at the present time: to which is added a Plan of Elsinour. One large sheet..... | 0 | 5 | 0 |
| 99. The Baltic , with the Gulfs of Bothnia and Finland, in one very large Chart; with Plans of Harbours, Appearances of Land, Figures of the Lighthouses, &c. Engraved on eight sheets; with a Book of Sailing Directions. Recommended, for convenience, in two parts, North and South..... | 1 | 1 | 0 |
| 100. The BALTIC SEA , on two large sheets of double elephant paper, with numerous Plans of Harbours, Views of Land, &c. With a Book of Sailing Directions..... | 0 | 8 | 0 |
| 101. The GULF of FINLAND , uniform with the preceding Chart of the Baltic, including many particular Plans, Figures of the Lighthouses, &c., complete to the present time; with a Book of Directions..... | 0 | 8 | 0 |

V.—FRANCE, SPAIN, PORTUGAL, AND THE MEDITERRANEAN.

- | | | | |
|--|---|---|---|
| 102. The BAY of BISCAY , chiefly from Surveys made respectively by order of the Governments of France and Spain, with fourteen particular Charts of its Harbours, &c., by Mr. J. Outhett. The particular Charts are—1. The Bay of Brest, &c.; 2. Port L'Orient; 3. Mouth of the Loire, or River of Nantes; 4. Basque Roads, with the Gironde, or River of Bordeaux, &c.; 5. Port Passage; 6. Bay of St. Sebastian; 7. Bay of Bilbao; 8. Harbour of Santona; 9. Harbour of Santander; 10. Port of Rivadeo; 11. Port Vivero; 12. Inlet of Vares; 13. Harbour of Cedeira; 14. Harbour of Corunna. <i>With a new Sailing Directory for all the Harbours</i> | 0 | 8 | 0 |
| 103. The Coasts of SPAIN, PORTUGAL, and Barbary , from St. Sebastian to Cape Blanco, North; constructed from the Surveys, &c., of Tofiño and other distinguished Modern Navigators, by JOHN PUDY; and comprising also, on a large scale, particular Charts of the Inlets of <i>Ferrol, Coruna, and Retanzos</i> , the Inlet of the <i>Vigo</i> , the Harbours of <i>Lisbon, Porto, Setubal, and Cadiz</i> , the <i>Strait of Gibraltar</i> , the <i>Bay of Gibraltar</i> , the Harbour and Bar of <i>S. Lucar de Barameda</i> , the Port of <i>Seville</i> , &c.; on two sheets, with numerous Views of the principal Headlands, and a new Sailing Directory..... | 0 | 8 | 0 |

MEDITERRANEAN SEA.

- | | | | |
|---|---|----|---|
| 104. The MEDITERRANEAN SEA .—A new General Chart of the Mediterranean Sea and a portion of the Euxine or Black Sea, including the Bay of Biscay, Coasts of Spain, Portugal, &c., composed and reduced, chiefly, from the actual Surveys of officers in the Royal Navies of Great Britain, France, Spain, Portugal, Naples, and Austria; which include, among others, the distinguished names of Beaufort, W. H. Smyth, Tofiño, Zannoni, Campana-Visconti, Ganttier, Bérard, L'authout de Marigny, &c. Three large sheets, joined and lined in the usual manner, with a Book of Directions..... | 0 | 11 | 0 |
|---|---|----|---|

- | | £ | s. | d. |
|---|---|----|----|
| 105. Sheet I. of the preceding Chart, No. 104.— <i>The Coasts of France, Spain, Portugal, &c.</i> Contains particular Plans of the Strait of Gibraltar, the Bay of Gibraltar, Tangier, Bay of Oran, Bay of Algier, Harbour of Malaga, Cartagena, Alicante, Tarragona, Barcelona, and Environs of Marseille: | 0 | 5 | 0 |
| 106. Sheet II. of the preceding Chart, No. 104.— <i>Central Part of the Mediterranean, including the Adriatic, or Gulf of Venice.</i> Harbour Plans of Genoa, Livorno or Leghorn, Channels of Elba, Strait of Bonifacio, Bay of Naples, Palermo in Sicily, Trieste, Channel of Cofa, Bujeya or Bougia, Bona, Maltese Islands, Valetta in Malta, and Strait of Messina | 0 | 5 | 0 |
| 107. Sheet III. of the preceding Chart, No. 104.— <i>The Levantine or Eastern Portion,</i> with particular Plans of the Dardanelles, Bosphorus or Channel of Constantinople, Bay of Tunis, Harbour of Tripoli, Coast of Egypt and Abukeer Bay, Harbours of Alexandria, Ports of Canea and Candia..... | 0 | 5 | 0 |
| 108. The STRAIT OF GIBRALTAR, with its Tides, Currents, &c.; with Tide Tables, and Directions on the Chart, by IGNATIUS REINER | 0 | 4 | 0 |
| [For the GENERAL SAILING DIRECTORY of the MEDITERRANEAN and BLACK SEA, see hereafter.] | | | |
| 110. A Survey of Port Mahon, in the Island of Minorca, on a very large scale. By HENRY SMYTH, R.N., K.S.F., &c..... | 0 | 4 | 0 |
| 112. ARCHIPELAGO, &c.— <i>The Coasts of Greece and the Archipelago,</i> including the Ionian Islands, with particular Plans of Corfu Roads, Strait of Chios, Marmorice and Karagatch Harbours, Bathy, Port of Argostoli, Zante Bay, Gulf of Smyrna, Town and Ports of Rhodes, Makry, Skopea, and Tenedos. Drawn from the Surveys of Captains W. H. Smyth, R.N., F.R.S., Richard Copeland, R.N., and Captain Thomas Graves, R.N., F.R.G.S. By ISAAC PURDY | 0 | 10 | 6 |
| 113. EUXINE, or BLACK SEA.—A new Chart of the Euxine, or Black Sea, the Sea of Azov, and the Bosphorus or Channel of Constantinople, with twenty-eight Plans of the Harbours. Constructed on the authorities described in the new Directory for the Mediterranean and Black Seas, by JOHN PURDY. Two large sheets, with Directions ... | 0 | 10 | 6 |
| 114. The Harbour Plans are as follow:—1. The Approaches to the Danube, from the Sea to Galatz; 2. Bay of Odessa; 3. The N.W. part of the Black Sea to Kherson; 4. Ak Metchet, on the N.W. Coast of the Crimea; 5. Eupatoria, or Koslov; 6. Fidonisi, or Serpent's Isle; 7. Strait of Otchakov; 8. Road of Iniada; 9. Bay of Varna; 10. Sevastopol or Akhtiar; 11. Roads of Yalta and Ourzouf; 12. Road of Soudag; 13. Theodosia, and Road of Takli; 14. Bay of Bourgas; 15. Road of Knstundji; 16. Balaclava; 17. Road of Platana; 18. Bay of Soukhoum Kalé; 19. Road of Pehiate; 20. Bay of Tumnusse, or of Soujouk-Kalé; 21. Penderaklia; 22. Amastra (ant. Amastris); 23. Sinope, in Anatoli; 24. Trapizonte, or Trebisonde; 25. Koutlouzi, or Ghelendjik; 26. Road of Anapa; 27. Strait of Kertche, or Cimmerian Bosphorus; 28. Estuary, or Gulf of the River Don, with Marioupol and Taganrog. Price, separately | 0 | 6 | 0 |

VI.—V

15. The Two
from the
of Guin
part of

Or each s

16. The Ea
British
and the17. AFRICA
Blanco
cular C

18. The Cos

19. The Cos
ticular20. The Cos
cluding
of Sier
Benin

21. The Ent

22. The Riv

23. The Co
adjacen
Old Ca
Thoma
Bengu24. The Ri
Bay of
185625. The W
the Ca
Biafra
Bay, J
Congo
Walvi
Capt
By A

26. False

28. South
Bay;27. Simon's
HUDI

VI.—WEST COAST OF AFRICA AND ATLANTIC ISLANDS.

	£	s.	d.
15. The Two Southern Sheets of the Atlantic, exhibiting the Ocean from the parallel of the Chesapeake to the Straits of Gibraltar, Coast of Guinea, &c., including the West Indies and Mexican Sea, being part of No. 3, described on page 2	0	8	0
Or each sheet may be had separately	0	4	0
16. The Eastern Sheet of the Reduced Atlantic, comprising the British Isles; France; Spain, Portugal, and Africa, to the Equator and the meridian of 42° West, being part of No. 7, page 2.....	0	4	0
17. AFRICA.—The Coast of Africa, from the Strait of Gibraltar to Cape Blanco; including the Madeiras and Canary Islands; with a particular Chart of Mogodor Bay	0	6	0
18. The Coast of Africa, from Cape Blanco to Cape Verde	0	4	6
19. The Coast of Africa, from Cape Verde to Cape St. Anne; with particular Plans of the Roads of Bissao, and the Isles de Loé.....	0	6	0
20. The Coast of Africa, from Cape St. Anne to Cape Formosa; including chiefly the Windward and Gold Coasts; with particular Plans of Sierra Leon, Bassa Cove, Lagos and its Channels, Entrance of Benin River, &c. &c.	0	10	6
21. The Entrance of Sierra Leon River. By Captain E. THOMPSON, R.N.	0	2	0
22. The River Sherbro', with Yawry Bay, &c.	0	2	0
23. The Coast of Africa, from Cape Formosa to Cape Negro; with the adjacent Islands, and particular Plans of Bonny River, Entrance of Old Calabar, Bimbia, Cameroons River, Anna de Chaves Bay, on St. Thomas's Island, Yumba Bay, View of Ambriz Road, Loanda St. Paul, Benguela, &c.	0	8	0
24. The River Congo, on the Coast of Africa; from its Entrance to the Bay of Yumba. From a Survey by George Maxwell. <i>New Edition</i> , 1856	0	7	6
25. The WESTERN COAST of AFRICA, from the Bight of Biafra to the Cape of Good Hope; with enlarged Plans of part of the Bight of Biafra and Fernando Po, the Bonny and New Calabar Rivers, Corsico Bay, Rio del Rey and Old Calabar Rivers, the Entrance of the River Congo, St. Paul de Loando, Benguela Bay, Lobito Bay, Elephant Bay, Walvisch Bay, Angra Pequena, Saldanha Bay; from the Surveys of Captains W. Owen, A. Vidal, W. Allen, H. Matson, R.N., and others. By A. G. FINDLAY	0	7	6
26. False Bay, and the Cape of Good Hope. By Capt. HUDDART.....	0	6	0
26*. Southern Coast of Africa, from the Cape of Good Hope to Dalagoa Bay; including the Bank of Agulhas. With particular Plans.....	0	3	0
27. Simon's Bay, in the colony of Good Hope, as surveyed by Captain HUDDART	0	2	6

128. The **AZORES**, or **WESTERN ISLANDS**, from the Surveys of Captain A. VIDAL, R.N., with a particular Chart of *St. Michael's*, on an enlarged scale. With Views..... 0 5
129. The **AZORES**, **Madeiras**, and **Canary Islands**, with part of the Coasts of Portugal and Africa, from the Borlings to Cape Bojador, constructed by JOHN PURDY. With Plans of Harbours, Views, &c. 0 8
130. The **CANARY ISLANDS**, with **MADEIRA**, **Porto Santo**, &c. from the Surveys of Captain VIDAL, &c.; with enlarged Plans of the Island of *Madeira*; *Porto Sante*, *Great Salvage*, the *Road of Funchal*, and *Roadstead of Santa Crus (Teneriffe)*; with Views, &c., from the Surveys of Captain A. VIDAL and others 0 5
131. The **Cape Verde Islands**, regulated by numerous scientific Determinations, with Views and Directions on the Plate..... 0 4
132. A New large Survey of the **BERMUDAS**, or **BOMERS' ISLANDS**, with Plans of the Bar and Harbour of *St. George*, the *Narrows*, and *Murray Anchorage*, with a general Panoramic View of the Island, the Lighthouse on *Gibbs' Hill*, and a Description of the Islands, with Nautical Directions to accompany the Chart. By A. G. FINDLAY, F.R.G.S. 0 5
- The same, coloured as a Map, but without Directions..... 0 6
- Or with the Book of Directions 0 7

VII.—THE EASTERN COASTS OF NORTH AMERICA.

133. A Chart of the **ISLAND** and **BANKS** of **NEWFOUNDLAND**, and the Coasts between *BELLE ISLE* and *BOSTON*, *CAPE COD*, &c.; including the *Gulf* and *River of St. Lawrence*, *Nova Scotia*, and the *Bay of Fundy*, compiled from Recent Surveys of Captain H. W. BAYFIELD, R.N., and the Positions adjusted from numerous Observations. Constructed by JOHN PURDY, and drawn by A. G. FINDLAY. With a new Sailing Directory 0 12
134. The **Island of Newfoundland**; on one sheet. (Part of the above, No. 133.) 0 6
135. The **Island and Banks of Newfoundland**; with the adjacent Coasts. (Part of No. 133.) 0 7
136. **South-East Part of Newfoundland**, containing the *Bays of Placentia*, *St. Mary*, *Trepassy*, and *Conception* 0 3
137. **Captain Cook's Survey of the South Coast of Newfoundland**, On a large scale 0 6
138. **Captain Cook's Survey of the West Coast of Newfoundland**, On a large scale..... 0 6
139. The **Strait of Belle Isle**. On a large scale. Two sheets, with Directions on the Chart 0 5
140. **Eastern Coast of Labrador**, from the *Strait of Belle Isle* to *Cape Bluff* 0 3

11. South
12. GULF
Islands
servat
Hart
gan I
13. The B
comp
Three
14. Sheet
to the
the m
Orlan
Appro
15. Sheet
Island
Island
16. Sheet
Chart
Seven
17. St. Joh
Maste
18. Harbo
FRAN
Plate:
19. Trinity
20. NOVA
cludin
Plans
21. Breton
T. BA
22. Spanish
23. Halifax
24. A larg
in No
Harbo
moult
and N
25. A larg
COD
the I
New
Port
Hava
26. The C
&c.,

EASTERN COASTS OF NORTH AMERICA.

15.

	£	s.	d.
11. South Coast of Labrador, from Grand Point to Schectico	0	3	0
12. GULF of ST. LAWRENCE.— <i>The Gulf of St. Lawrence, and Breton Island, on a large scale, from Actual Surveys and Astronomic Observations. With Particular Plans of the Gut of Canso, Louisbourg Harbour, Sydney, or Spanish River, Ristigouche Harbour, the Mingan Isles, &c. Two sheets</i>	0	8	0
13. The RIVER of ST. LAWRENCE, from ANTICOSTI to MONTREAL, composed from the late Surveys of Capt. H. W. BAYFIELD, R.N. Three large sheets. With a Book of Directions	0	12	0
14. Sheet I. of the preceding Chart, No. 143. The River, from Montreal to the Pilgrims, containing enlarged Plans of it from Cape Goose to the middle of the Isle of Orleans; the Channels from the middle of Orleans Island to Quebec; the Harbour of Montreal; and the Approaches to Montreal, from Lake St. Peter to Repentigny	0	5	0
15. Sheet II. of the preceding Chart, No. 143. The River, from Hare Island to Cape de Monts; with an enlarged Plan of it from Green Island to Goose Cape	0	5	0
16. Sheet III. of the preceding Chart, No. 143. The River, from Cape Chatta to Mal Bay, and the Island Anticosti; with enlarged Plans of Seven Islands Bay, Gaspé and Mal Bay	0	5	0
17. St. John's Harbour, in Newfoundland. Surveyed by FRANCIS OWEN, Master R.N. With Directions on the Plate. 1799	0	3	0
18. Harbour of Great Placentia, in Newfoundland. Surveyed by FRANCIS OWEN. With Appearances of Land, and Directions on the Plate. 1801	0	3	0
19. Trinity Harbour, in Newfoundland. By FRANCIS OWEN. 1801....	0	2	0
20. NOVA SCOTIA.— <i>Nova Scotia, with a part of Breton Island; including the Bay of Fundy, and South Coast of New Brunswick; with Plans of the Harbours of Halifax, Shelbourne, Liverpool, &c.</i>	0	8	0
21. Breton Island, with the Gut of Canso, and Chedabucto Bay. By Mr. T. BACKHOUSE, Master R.N.	0	3	0
22. Spanish River, or Sydney Harbour, on ditto. By the same	0	3	0
23. Halifax Harbour, Nova Scotia. By Mr. T. BACKHOUSE, Master, R.N.	0	3	0
24. A large General Chart of the American Coast, from HALIFAX, in Nova Scotia, to PHILADELPHIA; with Plans of the following Harbours, viz., Halifax, St. John's New Brunswick, Portland, Portsmouth, Newbury-port, Annisquam, Boston, Newport or Rhode Island, and New York	0	10	0
25. A large General Chart, comprehending the Coasts from CAPE COD, in Massachusetts, to the HAVANA, in Cuba, and thence to the River Mississippi; with particular Plans of the Harbours of Newport in Rhode Island, New York, the Delaware, Charleston, Port Royal, St. Mary's Inlet, Nassau River, St. Augustin, the Havana, &c.	0	14	0
26. The Coast of the United States, from CAPE COD to SAVANNA, &c., being part of the Chart preceding, with the Harbours	0	10	6

157. The Coasts from PHILADELPHIA to the HAVANA, and River Mississippi; with the Harbours 0 12 £ s.
158. Survey of the Bay and Harbour of New York 0 1

VIII. WEST INDIES, GULF OF MEXICO, COAST OF COLOMBIA, ETC.

159. A New Chart of the WEST INDIES and the GULF OF MEXICO, constructed by A. G. FINDLAY, F.R.G.S., showing the Winds and Currents from Maury's Observations, with the following enlarged Plans:—Key West Harbour, Florida. Sta. Ana Harbour, Curaçao. Bocas de Dragos and Port Spain. Cartagena. Santa Marta. Cumana. Bridgetown, Barbadoes. Gulf of Mexico, with the three Passes of the Mississippi. Galveston. Mobile Bay. Port of Vera Cruz. The Isthmus of Panama and Darien. The whole printed on four sheets 0 14
- The two Western Sheets, containing the Gulf of Mexico and Panama, may be had separately, price 0 10
- If mounted on cloth, with rollers, and full coloured, as a Map 1 15
160. A New General Chart of the WEST INDIA ISLANDS, with the adjacent Coasts of the Southern Continent; including the Bay of Yucatan, or Honduras. Composed from a great variety of Surveys and Observations, particularly those made by the Spanish Surveyors. By JOHN PURDY 0 5
161. The WINDWARD and GULF PASSAGES; comprehending the Navigation of the West Indies, from Porto Rico Westward; and including, on a large scale, the Islands of Hayti or St. Domingo, Jamaica, Cuba, the Bahama Islands, the Strait and Stream of Florida, &c., with particular Charts of Port Royal and Kingston Harbours, Jamaica; of Guantanamo, in Cuba; of the Crooked Islands, Morant Keys, Roadsteads of New Providence, Views of the Land, &c. Compiled from the recent Admiralty Surveys. Accompanied by the New Sailing Directory. See No. 273 hereafter 0 12
162. The Caribbee and West India Islands, from Porto Rico to Trinidad inclusive; with the Coast of the Spanish Main thence to Guayra. Improved by various Emendations and Additions from the Chart constructed under the orders of the Spanish Government; comprising, also, particular Charts of the Virgin Islands, the Bocas of Trinidad, Chaguaramas Harbour in Trinidad, St. George, Grenada, and Twenty-seven other particular Charts of Harbours and Islands. By JOHN PURDY. Accompanied with a Book of Directions 0 12
163. The same Chart, without the Twenty-seven Plans, with the Book ... 0 8
Of the Harbours, either sheet may be had separately, as follows:—
164. Sheet I. of the Caribbean Harbours, which contains those of St. Juan, Aguadilla, Mayaguez, and Porto Guanica, of Porto Rico, St. Thomas's; West End of Normand's Island; Road Harbour, Tortola; North South of Virgin Gorda; St. Eustatius; St. John's; Falmouth, and English Harbours, Antigua; the Saintes; Fort Royal, Martinique; and St. George's, Grenada 0 4

165. Sheet
Luc
and
Esm
and

166. Turk

167. The 1
Pric
FAR
India

Colour

168. Surve
Editi

Colour

169. JAMA
the P

Or with
the I

170. The H
Mora
Island
Mont
be ha

171. Smalle

172. St. Don
Cuba,

173. The Is

174. The Is
Colour

175. Islands
4s.....

176. Island

177. Guadal

178. Domini

179. Island

180. _____

181. _____

182. _____

183. _____

184. _____

185. _____

186. _____

£ s.
and
..... 0 12
..... 0 1

KICO,

OF
g the
owing
rbour,
Santa
with
Port
whole
..... 0 14
nama,
..... 0 10
..... 1 15
with
Bay of
surveys
veyors.
..... 0 5
g the
, and
mingo,
am of
ngaton
lands,
Land,
panied
..... 0 12
Trini-
uayra.
rt con-
prising,
inidad,
wenty-
JOHN
..... 0 12
ook ... 0 8
es:—
Juan,
t. Tho-
ortola;
mouth,
Mar-
..... 0 4

	£	s.	d.
165. Sheet II. of the Caribbean Harbours, containing Port Castrica, St. Lucia; Man-of-War Bay and Rockley Bay, Tobago; Carriole Bay and Bridgetown, Barbadoes; on the Main, Porto Santo; Carupano; Esmeralda; Curama; Porto Mochima; Barcelona; Cornaros Road; and La Guayra	0	4	0
166. Turks Islands and Bank, with the Soundings.....	0	2	0
167. The Islands of St. Bartholomew, St. Martin, Anguilla, Dog, and Prickly Pear, &c., from the Surveys and Observations of Mr. S. FAHLBERG. Uniform with the undermentioned Plans of the West India Islands. Plain	0	8	0
Coloured	0	4	0
168. Survey of the Virgin Islands, uniform with the above, New Edition, by A. G. FINDLAY, plain	0	8	0
Coloured	0	4	0
169. JAMAICA.—A new General Chart of the ISLAND of JAMAICA, with the Pedro Bank and Kays, Morant Kays, &c.; on one sheet	0	5	0
Or with Fourteen Plans of the Harbours and principal Anchorages of the Island. Constructed by JOHN PURDY. Two large sheets.....	0	8	0
170. The Harbours, &c., are as follow:—Kingston and Port Royal, Port Morant, Anchorages in Morant Bay; those of Savanna la Mar, Green Island Harbour, Port Antonio, St. Anne's, Falmouth, Mosquito Cove, Montego Bay, Harbour of Luces, Bluefields, and Old Harbour, may be had separate	0	4	0
171. Smaller Map of the Island of Jamaica, with the Interior. Coloured...	0	4	0
172. St. Domingo, or Hispaniola; with the Passages from the East End of Cuba, &c., part of No. 161	0	5	0
173. The Island of Ruatan, or Rattan	0	8	0
174. The Island of St. Croix; from an actual Survey, by P. L. OXBORN. Coloured, 4s.	0	8	0
175. Islands of St. Christopher, or St. Kitt's, and Nevis. Coloured, 4s.....	0	8	0
176. Island of Antigua. Coloured, 4s.....	0	8	0
177. Guadaloupe. Coloured, 4s.	0	8	0
178. Dominica. Coloured, 4s.	0	8	0
179. Island of St. Lucia. Coloured, 4s.....	0	8	0
180. ——— Martinico, or Martinique. Coloured, 4s.....	0	8	0
181. ——— St. Vincent. Coloured, 4s.	0	8	0
182. ——— Tobago. Coloured, 4s.....	0	8	0
183. ——— Barbadoes. Coloured, 4s.	0	8	0
184. ——— Bequia. Coloured, 2s.	0	1	6
185. ——— Grenada. Coloured, 4s.	0	8	0
186. ——— Curacao. Coloured, 4s.	0	8	0

187. Island of Trinidad, from actual Surveys and Astronomical Observations, numerous Soundings, &c.; divided into the States, Roads, &c. &c. Coloured, 4s. Plain	2	0	0
188. New Chart of the MEXICAN SEA, or GULF of MEXICO, including the Strait of Florida; constructed by A. G. FINDLAY, P.R.G.S. With particular Plans of Vera Cruz, the Mouths of the Mississippi, Mobile, and Galveston Bay. See No. 169	0	5	0
189. The same Chart, with the Isthmus of Panama and Darien, on a large scale, see No. 169	0	10	0
190. Particular Chart of the important Anchorages of Anton Lizardo, in the Mexican Sea; from a Spanish Survey	0	1	0
[For the COLOMBIAN NAVIGATOR, containing the most complete Directions for all the West Indies, &c., see Nos. 269, 270, 271, hereafter.]			
191. The BAY of HONDURAS, including the Western part of Cuba, the Swan Islands, and Mosquitia; with particular Plans of the Harbour of Balize; Bay of Truxillo; Port Royal Harbour, Ruatan; Harbour of Bonacca; Western part of Cuba, the Rio Dulce, and Mugerac Harbour; N.E. Coast of Yucatan. Improved from the recent Surveys of Captains Richard Owen, R.N., and Bird Allen, &c. By JOHN PURDY	0	0	0
192. The Coast, from Great River, on the Mosquito Shore, to Carthagena	0	3	0
193. COLOMBIA.—The North-eastern Coast of Colombia, from Barcelona eastward; with the Islands Margarita, Trinidad, Tobago, Grenada, &c. Chiefly from the Survey of DON JOAQUIN F. FIDALGO, made by order of the Spanish Government; with particular Charts of Pampatar and the Lagoon of Obispo	0	5	0
194. The COAST and RIVERS of GUYANA, between the Corentyn and the Pomeroon; including the Berbice, Demerary, Essequibo, &c. Two Sheets	0	8	0
195. Guyana; from the Mouth of Rio Orinoco to Berbice; including the Rivers Pomeroon, Essequibo, Demerary, and Berbice.....	0	3	0
196. Guyana and Surinam; from River Berbice to Cape North, and the Marañon, or River of Amazons; containing the Colonies of Berbice and Surinam; with the French Colony of Cayenne; also a Sketch of the Island of Cayenne, and a Plan of the Town and Port	0	3	0
197. Surinam River; and the Coast approaching it, to Paramaribo; on a large scale, accompanied with Sailing Directions, Views of Land, &c.	0	3	0

IX. BRASIL, ETC.

(See Nos. 12, 13, 14, 15, 20, and 21.)

186. BRASIL.—A new General Chart of the Coasts of BRASIL, &c., from the River Pará to Buenos Ayres, with particular Plans of the Harbour; constructed chiefly from the Surveys of the Baron ROUSSIN and Capt. W. HEWETT, adjusted by the late Observations of Capt. P. P. KING, Capt. ROBERT FITZROY, and other officers of the British Royal Navy. Three large sheets, with Views of Land. With a new Directory, entitled, <i>The Brazilian Navigator</i> , No. 267	0	12	0
The Directions separate	0	4	0

199. The ... the part ham Para			
200. The ... the ... the ... Sant			
201. The ... from Bahia S. Pa			
202. The ... Joco origi HEW			
203. The ... SIT			
204. The ... Island Bahia Obser and a			
205. Harbe as sur vador preced			
206. The W THOM			
207. A larg from t By G descrip			
208. The IB Good I new CH			
209. The N SIA, & betwe Aden No. 22			

BRASIL, &c., AND INDIAN OCEAN.

19

	£	s.	d.
199. The Northern Sheet of the preceding Chart (No. 193), comprising the Coast of Brasil, from Para to Bahia and the Rio Ilheos, with particular Plans of Rio Para, the Mouths of the Maranhon, Maranham, Siara, the River Jaguarybe to Aracati, Rio Grande do Norte, Parahyba do Norte, and Fernando Noronha.....	0	4	0
200. The Central Sheet of the same Chart (No. 193), with the Coast from the Rio de Ilheos to Paranagua, and particular Plans of Pernambuco, the approaches thereto, Porto Mazayo, the Abrolhos, Bay of Espiritu Santo, Porto Frio, Marambaya, St. Sebastian, and Cape Santa Maria	0	4	0
201. The Southern Sheet of the same Chart (No. 193), with the Coast from Paranagua to Buenos Ayres, and particular Plans of Paranagua, Bahia, Rio Janeiro, Santa Catherina, Canoa, Santos, Rio Grande de S. Pedro, Maldonado, and Monte Video	0	4	0
202. The Northern Coast of Brasil, from Seara to the Island of St. Joco, or St. John, including the Port of Maranham, &c., with an original Survey of the Harbour of Maranham. By Captain WILLIAM HEWETT, R.N.	0	5	0
203. The Jaguarybe River (North Coast of Brasil), surveyed by Capt. STEPHEN WHETTEM, of the Ship <i>Severn</i>	0	2	0
204. The Eastern Coast of Brasil, from Seara to Santos, including the Island of Fernando Noronha, with the Harbours of Pernambuco, Bahia, or St. Salvador, Rio de Janeiro, &c. Adjusted from the Observations and Surveys of Captain HEWETT. With Views, &c., and a Book of Directions.....	0	5	0
205. Harbours of Brasil: viz. The Road and Harbour of Pernambuco, as surveyed by Captain HEWETT; the Harbour of Bahia, or St. Salvador; that of Rio de Janeiro, Rio Para, &c.; uniform with the preceding Charts	0	5	0
206. The Western Falkland Islands, from an actual Survey by Lieut. THOMAS EDGAR, R.N.	0	4	0
207. A large Chart of South Shetland, including Coronation Island, &c., from the Exploration of the Sloop <i>Dove</i> , in the years 1821 and 1822. By GEORGE POWELL, Commander of the same; with "Notes," descriptive of those Lands	0	6	0

X.—INDIAN OCEAN.

208. The INDIAN OCEAN and EASTERN SEAS, from the Cape of Good Hope to Canton, with New South Wales, New Zealand, &c. A new Chart, on five sheets. By A. G. FINDLAY, F.R.G.S.....	0	16	0
209. The NORTH-EASTERN COAST of AFRICA, ARABIA, PERSIA, &c.; with particular Plans of the South-west Coast of Arabia, between Mocha and Aden; including the Strait of Babel-mandeb, Aden Roads and Harbour, and Port of Bushire, being Sheet I. of No. 22.....	0	4	0

	£	s.	d.
210. The COASTS of INDIA, SUMATRA, MALAYA, &c.; with Plans of Bombay Harbour, Strait of Singapore, Strait of Sunda, Banca Strait, Gaspar Strait, Labonan Island, and Bruni River (N.E. Coast of Borneo), being Sheet II. of No. 22	0	4	0
211. The COAST of SOUTH AFRICA, from Ichaboe and the Cape of Good Hope to Comero Islands, Madagascar, Mauritius, &c.; with an enlarged Chart of the Cape and Bank of Agulhas, Simon's Bay, Algoa Bay, Mossei Bay, Plettenberg Bay, Knysna Harbour, &c., being Sheet VII. of No. 22.....	0	4	0
212. The SOUTHERN INDIAN OCEAN, and KERGUELEN LAND, &c.; with enlarged Plans of the N.E. Coast and Island of Kerguelen, Christmas Harbour, Port Palliser, Keeling Islands, and the Island of St. Paul, being Sheet VIII. of No. 22	0	4	0
213. Charts of the Currents in the Indian Seas, during the North-east and South-west Monsoons, by M. Le Vicomte Grenier. The pair	0	4	0
214. St. Augustine's and Tullea Bays, on the Western Coast of Madagascar. 1794	0	4	0
215. MAURITIUS, or the Isle of France, with the Isle of Bourbon or Re-Union, and particular Plans of the Harbours, &c. On one large sheet	0	5	0
216. Isle of Rodrigue, in the Indian Ocean. 1794	0	2	0
217. Colombo Harbour, on the Western Coast of Ceylon	0	3	0
218. Port de Galle, on the Western Coast of Ceylon	0	3	0
219. Port de Galle (reduced from the above), and Bay of Nilewelle, on the South Coast of Ceylon	0	3	0
220. Bay and Harbour of Trincomalay, corrected from the Observations of Capt. P. HEYWOOD, R.N., &c. 1795	0	5	0
221. BENGAL, &c.—Northern Part of the Bay of Bengal, between Point Palmyras and the Aracan Shore.....	0	6	0
222. Hoogly River, and the Roads of Balasore and Piply, from Point Palmyras to Lacam's Channel, with the Course of that River up to the Town of Hoogly; with an enlarged Plan of Calcutta. <i>New Edition</i>	0	7	6
223. Channel Creek, from George's Point to the parallel of 21° N. On a very large scale	0	7	6
224. Andoman and Nicobar Islands. 1818.....	0	4	0
225. Survey of Pulo Pinang, or Prince of Wales's Island, with the Strait between it and the Coast of Malacca, or the North and South Channels. On a very large scale. By Lieut. THOMAS EVANS, R.N. 1807	0	6	0
226. South Channel, from Prince of Wales's Island to the Sea. By Sir HOME POPHAM. 1798.....	0	4	0

XI
 227. Th
 S
 228. Th
 A
 II
 229. Ja
 230. No
 1
 231. Str
 232. Ga
 233. Str
 234. Ma
 235. Pu
 236. Th
 n
 237. Th
 th
 B
 be
 T
 R
 ca
 el
 238. M
 la
 th
 239. A
 C
 F
 240. Th
 ve
 sh
 M
 241. Th
 242. So
 in
 243. Th
 C
 G
 sh
 244. Bo
 245. Dh

XI.—ORIENTAL ARCHIPELAGO, AND CHINA SEA.

	£	s. d.
227. The COAST of INDIA, SUMATRA, MALAYA, &c. , being Sheet II. of No. 22	0	4 0
228. The COAST of CHINA, JAPAN ISLANDS, and ORIENTAL ARCHIPELAGO; with a Plan of Nagaski Harbour, being Sheet III. of No. 22.....	0	4 0
229. Javan Sea, including the Isle of Java, &c. 1836	0	6 0
230. North Coast of Java, exhibiting the Roads of Bantam and Batavia. 1794.	0	5 0
231. Strait of Banca; surveyed by Capt. LLOYD and Mr. BAMPTON. 1796	0	3 0
232. Gaspar Straits; surveyed by Captain Jos. HUDDART, F.R.S. 1840 ...	0	5 0
233. Straits of Bali, and Pondi, and Respondi. 1836	0	4 0
234. Macassar Strait, between the Islands of Borneo and Celebes. 1799 ...	0	6 0
235. Puio Timon Bay. 1794.....	0	3 0
236. The Chinese Sea, with its several Entrances; drawn from a great number of Draughts, Journals, and other Nautical Documents. 1810	0	6 0
237. The COAST of CHINA, from Canton to Nanking , drawn from the Surveys of Captains R. COLLINSON, H. KELLET, and Sir EDW. BELCHER, R.N. By J. PURDY. With enlarged Plans of the Harbours of Kelung, Yung Kiang, Woosung, Channels leading to Tinghae, with part of the Chusan Islands, Tinghae Harbour, The River Min, Chinchew Harbour, Amoy Harbour, Hong Kong, Pescadore Islands, and Formosa. Engraved on three sheets of double elephant paper	0	14 0
238. MACAO. — <i>A Chart of the Tyta and Harbour of Macao</i> , on a very large Scale. Principally from a Survey by Captain P. HEYWOOD, of the Royal Navy.....	0	4 0
239. A Survey of the River Tigris , from the Island of Lankeet to Canton; with copious Directions, &c. By Captain JOSEPH HUDDART, F.R.S. 1826.....	0	4 0
240. The PHILIPPINE ISLANDS, Palawan, &c. , from the latest Surveys; with a particular Plan of the Bay of Manila. By A. ARROWSMITH. <i>New Edition</i> , improved from the Spanish Charts of COELLO, MORATA, &c. By A. G. FINDLAY, F.R.G.S.	0	6 0
241. The Port of Subec; in the Isle of Luzon. 1794	0	3 0
242. Sorsogan Harbour, on the South Coast of Luzon; and Bongo Bay, in the Island of Mindanao. 1794	0	3 0
243. The Moluccas and BANDA SEA , showing the Eastern Passages to China. (Improved from the Dutch Chart, by Lieutenant F. A. A. GREGORY, and other Sources.) By Lieutenant H. MOOR, R.N. Two sheets	0	7 6
244. Booro Bay. Surveyed by Lieutenant MOOR. 1801.	0	4 0
245. Dhelli Harbour in Timor, by the same. 1801.	0	3 0

	£	s.	d.
246. Islands and Harbour of Banda, on a large scale, from the Surveys and Observations of Lieutenant G. W. CUMMING, R.N.; with Directions on the Plate	0	6	0
247. Boero, Gilolo, Ceram, and New Guinea, with the Passages eastward of Celebes, exhibiting all the different Channels from the meridian of 125½° E. With a Plan of Amboyna. By A. ARROWSMITH	0	6	0
248. NEW GUINEA, &c.—The Islands and Passages in the vicinity of Papua, or New Guinea, between the Sea of Banda and the eastern extremity of the Solomon Islands, with part of the <i>Arafoura Sea</i> , and the Routes of MM. Bougainville, D'Entrecasteaux, Kolf, Modera, and Dumont D'Urville, &c.....	0	10	6

XII.—AUSTRALIA AND PACIFIC OCEAN.

249. The WHOLE COAST OF AUSTRALIA, VAN DIEMEN'S LAND, &c.; with enlarged Plans of Bass's Strait, Port Phillip, Cockburn Sound, and Entrance of Swan River, King George Sound, Bays of South Australia, Port Jackson, and Entrance to the River Derwent, being Sheet IX. of No. 22	0	4	0
250. A New Chart of the SOUTH-EASTERN COASTS OF AUSTRALIA, between Moreton Bay and Investigator Group; with enlarged Plans of Port Stephens, Port Jackson, and Sydney, Broken Bay, Butany Bay, Port Phillip, Entrance of Port Phillip, Entrance of Western Port, Bateman Bay, and Spencer and St. Vincent's Gulfs. On two sheets of double elephant paper. By A. G. FINDLAY	0	10	6
251. AUSTRALIA, showing the most recent Discoveries	0	2	0
252. TASMANIA, or Van Diemen's Land, from recent Surveys	0	2	0
253. NEW ZEALAND, with Plans of Chatham Island, Port Nicholson, and the towns of Wellington and Nelson, and Port Otago.....	0	2	0
254. Plan of Chatham Island, Pitt's Island, Cornwallis Island, &c., to the eastward of New Zealand, 4to.	1	0	0
255. The Western Part of the PACIFIC OCEAN, comprised between the latitudes of 48° South and 17° North, and from 141° to 181° East Longitude, including the Islands of NEW ZEALAND, Feejees, Carolines, Solomon's Archipelago, New Hebrides, &c., and from the S.W. Cape of Australia to the Island of Tinian; with Plans of Storm Bay, Port Jackson, Bay of Islands, Lord Auckland's Group, Port Nicholson, &c. On three large sheets. New edition.....	0	12	0
256. Reduced General Chart of the Pacific Ocean, by A. ARROWSMITH. Comprising the latest Surveys. One large sheet. See also No. 30.....	0	4	0
257. NEW ZEALAND and OCEANIC ISLANDS, including the Feejee Islands, &c., being Sheet X. of No. 22	0	4	0

258. The inc IV.
259. The Fr
260. SOU Arc
261. The enl Ka the Por of C
262. The fro Por Sho
263. CAL bet Pla Fra AL
264. ATT acc pris tha pri incl of Lig the Atl a g ticu 5. Cor of Nat Cur and men

	£	s.	d.
258. The NORTHERN PACIFIC OCEAN , with its Eastern Islands, including the Sandwich Islands, Marshall Islands, &c., being Sheet IV. of No. 22	0	4	0
259. The COASTS of CALIFORNIA, the OREGON TERRITORY, &c. , with Plans of the Mouth of the Oregon River, Harbour of San Francisco, and Guaymas Harbour, being Sheet V. of No. 22	0	4	0
260. SOUTHERN PACIFIC OCEAN , with its Eastern Isles, the Low Archipelago, Society Islands, &c., being Sheet XI. of No. 22	0	4	0
261. The WESTERN COASTS of CENTRAL AMERICA, &c. , with enlarged Plans of the Sandwich Islands, and Harbours of Honoruru, Kairua Bay, Waiakia or Byron Bay, Hanalai Bay, continuation of the Columbia River, Acapulco Bay, Port Sacrificios, Port Guatulco, Port La Union; Realejo Harbour; Harbours, &c., on the N.W. Coast of Otaheite, the Bay of Panama, &c., being Sheet VI. of No. 22	0	4	0
262. The WEST COAST of SOUTH AMERICA , with its Islands, from Lima to La Plata; with enlarged Plans of Falkland Islands, Port Desire, Port San Carlos, Coquimbo Bay, and Callao Road, being Sheet XII. of No. 22.	0	4	0
263. CALIFORNIA and OREGON , a New Survey of the Coasts between Point Concepcion and De Fuca Strait, with enlarged Plans of De Fuca Strait and Puget Sound, &c., Columbia River, San Francisco Harbour, with Appearances of Land, and Directions. By ALEX. G. FINDLAY, F.R.G.S.....	0	6	0

XIII.—NAUTICAL BOOKS, ETC.

264. ATLANTIC OCEAN. — <i>Memoir, Descriptive and Explanatory, to accompany the Charts of the Northern Atlantic Ocean; and comprising Instructions, General and Particular, for the Navigation of that Sea.</i> Also, 1. Tables of the determined Positions of all its principal Points, &c., with the Authorities; illustrated by Notes: including Remarks on the Variation of the Compass; 2. A Description of Lighthouses and their Illumination, and a complete List of the Lighthouses on the Atlantic Coasts; 3. A copious Explanation of the Winds, Tides, Currents, &c., and of different Passages over the Atlantic and Equator, as controlled by these Phenomena; including a general Tide Table; 4. Descriptions of the Coasts and Islands, particularly of the Azores, Madeiras, Cape Verde, and Bermuda Islands; 5. A Description of Rocks, Shoals, and Vigias, By JOHN PURDY. Corrected and materially improved, by ALEX. G. FINDLAY, Fellow of the Royal Geographical Society. With an Appendix on General Nautical Practice: the Compass; Variation; Temperature of the Sea; Currents; Depth of the Sea; Meteorology; Marine Thermometer and Barometer; and the Subjects therewith connected: with numerous Diagrams and Illustrations. Eleventh Edition	0	14	0
---	---	----	---

☛ This New Edition has been completely revised, and much of it re-written, in order that the work should fully represent the present condition of Hydrographical knowledge.

265. **The New Sailing Directory for the ETHIOPIAN or SOUTHERN ATLANTIC OCEAN**, including the Coasts of Brasil, &c., to the Rio Plata; the Coast thence to Cape Horn, and the African Coast to the Cape of Good Hope, &c., including the Islands between the two Coasts, composed and arranged from a great variety of Documents, which include many original and valuable communications as enumerated in the work; and comprehending—1. Tables of the Position of Places, with explanatory Notes, and Notes on the Variations of the Compass, &c.; 2. General Observations on the Winds, Tides, Currents; the Animals and Phenomena of the Ocean; the Passages to and from Brasil, St. Helena, and the Cape of Good Hope; 3. Description of the Islands, &c.; 4. Description of, and Sailing Directions for, the Coasts of Brasil, La Plata, Patagonia, &c., from Pará to Cape Horn, inclusive; 5. Africa, from Cape Mount to the Cape of Good Hope, and thence to Algoa Bay; 6. The Cape Bank, or Bank of Agulhas, with its Current, &c; 7. The Passage from Brasil to the Cape of Good Hope to England, and from the Cape to North America. By JOHN PURDY. Revised and corrected by ALEX. G. FINDLAY, F.R.G.S. Fourth Edition. Octavo, boards £ 14 0
266. **A Directory for the Navigation of the PACIFIC OCEAN**; with Descriptions of its Coasts, Islands, &c.; from the Strait of Magalhaens to the Arctic Sea, and those of Asia and Australia; its Winds, Currents, and other Phenomena. In Two Parts. Part I: The Coasts of the Pacific Ocean. Part 2: The Islands, &c., of the Pacific Ocean. By ALEX. G. FINDLAY, F.R.G.S. In Two Volumes, royal 8vo., 1,500 pages, in cloth boards, with a Chart of the Currents, &c. \$ 0 0

From the Address to the Royal Geographical Society, by Sir Roderick Murchison, F.R.S., P.R.G.S.

"Mr. FINDLAY has completed his 'Directory of the Great South Sea,' a work likely to prove very important to navigators. It is divided into two large-sized volumes, in which authorities from all countries have been collected; and the introduction contains a condensed historical notice of all the principal Pacific navigators."—*Journal*, vol. xxii., 1852.

From the Nautical Magazine, 1852.

"At length the Great South Sea has a Directory, to which the seaman who is bound there can appeal for instruction and all the information to be obtained regarding it. The work is divided into two goodly-sized volumes, in which authorities from all countries are made to contribute their information. A condensed view of all the important Pacific navigators appears as a useful introduction, containing historical notices of much interest."

By the Chevalier Jacob Swart, Hydrographer to the Dutch Admiralty, Corresponding Member of the Royal Geographical Society of London, &c. &c.

"We have thus briefly described this treasure, and recommend its use and reference. Mr. FINDLAY, as composer of this work, will not only deserve the thanks of his countrymen, but also of the mariners of every nation, who traverse these oceans, the greatest in the globe, with their shipping. The publisher, Mr. R. H. LAURIE, claims great credit for the neat execution and handsome form of the volumes; and the author, Mr. FINDLAY, deserves all praise: they must feel assured that navigators will here possess a work that will rival the best ever published in England."—*Verhandelingen en Berigten*, &c., April, 1852, p. 438.

£ s. d.

267. The
Coast
inch
and
Map
Sele
Thin
Mon
Pedi
F.R.

268. NOR
acco
pris
thos
siti
by N
The
Win
&c.;
Dire
of G
Fish
Shet
On
the
Isan
the
&c.
Desc
PURI

269. The C
for t
COAS
being
Isan
Editi
New

270. The C
for t
MEX
St. D
of Yu
includ
Part
of An
by An

271. The C
for t
prehe
the V
Guyan
Gulf
of the
Spani

267. **The BRAZILIAN NAVIGATOR**; or, Sailing Directory for all the Coasts of Brazil, &c., from the River Pará to the Rio de la Plata; including General Instructions for the Routes, both from England and from North America, with Descriptions of, and Directions for, the Madeira, Canary, and Cape Verde Islands, Fernando Noronha, &c. Selected from the preceding volumes, Nos. 264, 265, by JOHN PURDY. Third Edition, improved from the Observations of M.M. Tardy de Montravel, C. H. P. H. de Kerhallet, Chiron du Brosset, and Du Périer, of the French Marine, and other Officers, by A. G. FINDLAY, F.R.G.S. 0 4 0
268. **NORTHERN OCEAN**.—*Memoir, Descriptive and Explanatory, to accompany the Chart of the Northern Ocean, &c., No. 10, and comprising Instructions, general and particular, for the Navigation of all those Seas. This Work contains,—1. Tables of the determined Positions of all the principal points, &c., with the authorities; illustrated by Notes; including Remarks on the Variation of the Compass; 2. The General Phenomena of the Northern Ocean; the Atmosphere, Winds, Ices, Colour of the Sea, and best Places for Fishing, Currents, &c.; 3. Particular Descriptions of the Coasts and Islands; with Directions for Sailing, &c. This Section includes the Eastern Coast of Great Britain; the Islands of Orkney; Islands of Shetland; the Fishing Banks of Scotland, particularly those about Orkney and Shetland; the Voyage from England to the White Sea, Archangel and Onega; the Voyage from England to Spitzbergen, including that of the Hon. Captain PHIPPS, 1773, and of Captain BUCHAN, 1818; Island of Jan Mayen; the Faeroerne, or Faroe Islands; Iceland; and the Voyage of Captain Ross with Lieut. Parry, around Baffin's Bay, &c. Also, Directions for Hudson's Straits and Hudson's Bay; 4. A Description of Rocks and Shoals in the Northern Ocean. By JOHN PURDY. Octavo, boards 0 4 6*
269. **The Colombian Navigator, Vol. I. A SAILING DIRECTORY for the BERMUDA ISLANDS, the EASTERN and SOUTHERN COASTS of the UNITED STATES, and the STATE of TEXAS; being Part II. of the Sailing Directories for the Eastern Coasts and Islands of America. Composed by the late JOHN PURDY. Second Edition, by A. G. FINDLAY, F.R.G.S. With a Surveyed Plan of New York Bay and Harbour 0 6 0**
270. **The Colombian Navigator, Vol. II. A SAILING DIRECTORY for the NORTHERN PART of the WEST INDIES and the MEXICAN SEA; comprising the Islands of Porto Rico, Hayti, or St. Domingo, Jamaica, Cuba, and the Bahama Islands, and the Coasts of Yucatan and Mexico; from Cape Catoche to the Rio del Norte; including the Description of the Florida, or Gulf Stream; being Part III. of the Sailing Directions for the Eastern Coasts and Islands of America. Composed by the late JOHN PURDY. Fourth Edition, by ALEX. G. FINDLAY, F.R.G.S. 0 7 0**
271. **The Colombian Navigator, Vol. III. A SAILING DIRECTORY for the AMERICAN COASTS and the WEST INDIES; comprehending the Colombian or Caribbean Sea in general; Porto Rico, the Virgin and Caribbee Islands, Trinidad, Coasts and Isles of Guyana, Venezuela, and New Granada, Mosquitia, or Mosquito Shore, Gulf and Bay of Honduras, &c. With Addenda on the Temperatures of the Air and Water in the West Indies; Preservation of Health; Spanish Words and Names, Spanish Pronunciation. In boards 0 7 0**

272. **The British American Navigator.—A SAILING DIRECTORY** for the ISLAND and BANKS of NEWFOUNDLAND, the Gulf and River of St. Lawrence, Briton Island, Nova Scotia, the Bay of Fundy, and the Coasts thence to the River Penobscot. Originally composed by JOHN PURDY, and completed by ALEX. G. FINDLAY, F.R.G.S. Second Edition 0 4
273. **RIVER of ST. LAWRENCE.—Sailing Directions** for the River of St. Lawrence, between Cape Gaspé and the River of St. John to Quebec and Montreal 0 1
274. **GULF of ST. LAWRENCE.—A New Directory** for the GULF of ST. LAWRENCE; to accompany the Chart by A. G. FINDLAY, F.R.G.S., is nearly ready 0 3
275. **WINDWARD and GULF PASSAGES.—The Sailing Directory** for the Windward and Gulf Passages, the Bahama Islands and Channels, the Islands of Hayti, Jamaica and Cuba, the Coasts of Florida, the Martyrs, &c., and the Florida, or Gulf Stream: to accompany the Chart. Composed from a variety of Documents and Surveys, by the late JOHN PURDY. Fourth Edition, revised and corrected from recent Authorities, by A. G. FINDLAY, F.R.G.S. 0 4
276. **The New SAILING DIRECTORY for the CARIBBEE or WEST INDIA ISLANDS**, from Porto Rico to Trinidad, inclusive; with the Colombian Coasts thence to La Guayra; including Descriptions of the different Islands, &c. 0 4
277. **The NEW SAILING DIRECTORY for the ENGLISH CHANNEL and Southern Coast of Ireland**; describing, in the most particular manner, all the Lighthouses, Lightvessels, and other remarkable Objects on the different Coasts, to the present time. Tenth Edition. By JOHN PURDY; improved and corrected by A. G. FINDLAY, F.R.G.S. 0 4
278. **A PILOTING DIRECTORY for the BRISTOL CHANNEL, ST. GEORGE'S CHANNEL, and all the Coasts of Ireland**; composed to accompany the several Charts of the same. The Sixth Edition, including the Pharology, or Description of all the Lighthouses, Light Vessels, and other remarkable Objects on the different Coasts to the present time, by A. G. FINDLAY, F.R.G.S. 0 4
- With the large general Chart, No. 61. 0 10
279. **SAILING DIRECTORY for the BRISTOL CHANNEL**, from Trevose Head and St. Bride's Bay, up to Bristol and Gloucester, with Descriptions of the Tides and Currents, composed from the Admiralty Surveys 0 2
280. **SAILING DIRECTORY for the St. GEORGE'S CHANNEL and the BRISTOL CHANNEL**: with Descriptions of the Coasts of England, Wales, and Scotland, between Trevose Head and the Skeryvore Lighthouse, and that of Ireland between Carnsore Point and the Giant's Causeway. Sixth Edition, by ALEX. G. FINDLAY, F.R.G.S. 0 3
281. **COAST of FRANCE.—Directions for the COAST of FRANCE**, from Cape Levi to Brehat Islands, with the Islands of Alderney, Guernsey, Jersey, &c., by A. G. FINDLAY, F.R.G.S. Fourth Edition 0 1

282. The
from
Har
PUR
LAY
With

283. A S
SE
to
the
imp
With

284. SAIL
the
Sea
Lev
PUR
of 8

285. SAIL
inol
to a

286. THE
ME
ston
to a
FIN

287. THE
EN
inol
the
Cha

The s

288. DIR
LA
ISL
Cha

289. SAIL
LA
Fra
the

290. THE
all
ever
hou

291. HOL
Hol
HE

292. THE
BE
Des
tim

282. **THE NEW SAILING DIRECTORY** for the **BAY of BISCAY**, from Ushant to Cape Finisterre; describing, most particularly, all the Harbours, Channels, Lighthouses, Tides, Currents, &c. &c. By JOHN PURDY. *Fourth Edition*; materially improved, by ALEX. G. FINDLAY, F.R.G.S. 0 2 0
 With the Chart..... 0 8 0
283. **A SAILING DIRECTORY** for the **W. and S.W. COASTS** of **SPAIN** and **PORTUGAL**, from Cape Ortegal to Cadiz, and thence to the eastward of Malaga; composed to accompany the Chart of these Coasts. By JOHN PURDY. The *Fourth Edition*; materially improved and corrected, by ALEX. G. FINDLAY, F.R.G.S. 0 2 0
 With the Chart.... 0 8 0
284. **SAILING DIRECTIONS** for the **STRAIT of GIBRALTAR** and the **MEDITERRANEAN SEA**; including the Adriatic Sea, the Sea of Marmora, the Euxine, or Black Sea, the Archipelago of the Levant, and the Coast of Africa. Originally composed by JOHN PURDY. New Edition, with many emendations, in one thick volume of 814 pages, by ALEX. G. FINDLAY, F.R.G.S. In boards 0 10 0
285. **SAILING DIRECTIONS** for the **EUXINE, or BLACK SEA**; including the Dardanelles, the Sea of Marmora, and the Bosphorus, to accompany the Chart, composed by ALEX. G. FINDLAY, F.R.G.S. 0 2 6
286. **THE NEW SAILING DIRECTORY** for the **THAMES** and **MEDWAY**, with the Navigation between Orfordness and Folkstone, and that of the several Harbours. Composed by JOHN PURDY, to accompany the Chart, No. 32. *Seventh Edition*, revised by A. G. FINDLAY, F.R.G.S. 0 2 0
287. **THE NEW SAILING DIRECTORY** for the **Eastern Coast of ENGLAND**, from ORFORDNESS to FLAMBOROUGH HEAD; including Lowestoff and Yarmouth Roads, Lynn and Boston Deepes, the River Humber, &c. Composed by the same, to accompany the Chart, No. 71. *Eighth Edition* 0 2 0
 The same continued to the River Tyne 0 2 6
288. **DIRECTIONS** for the **Eastern Coasts of ENGLAND** and **SCOTLAND**, from FLAMBOROUGH HEAD to the **ORKNEY ISLANDS**, and thence to **CAPE WRATH**, to accompany the Chart, No. 74. By ALEX. G. FINDLAY, F.R.G.S. 0 2 6
289. **SAILING DIRECTIONS** for the **South-Eastern Coasts of ENGLAND**, from Beachy Head to Flamborough Head; and the Coast of France and Belgium, between Boulogne and Ostend, to accompany the New Chart, by ALEX. G. FINDLAY, F.R.G.S. 0 2 6
290. **THE NEW SAILING DIRECTORY** for the **NORTH SEA**, with all its **HARBOURS**; containing the most particular Directions for every Coast, with the Correction of Buoyage, Beaconage, Lighthouses, &c., to the present time. To accompany the Chart, No. 86... 0 4 0
291. **HOLLAND, GERMANY, &c.—DIRECTIONS** for the **Coasts of Holland, Germany, and Denmark**, from the **TEXEL** to the **HEVER**, including the Rivers Ems, Elbe, and Weser 0 1 0
292. **THE DIRECTORY** for the **CATTEGAT, the SOUND, and the BELTS**, by Admiral the **CHEV. P. DE LÖVENORN, &c. &c.** With Descriptions of all the Lights and other Improvements to the present time 0 2 0

LARIE'S NAUTICAL CATALOGUE.

	£	s	d.
293. THE DIRECTORY for the BALTIC, or East Sea, adapted to the Chart Nos. 99 and 100, and comprising a General Description of that Sea, of its Coasts, Harbours, and Islands	0	2	0
294. THE DIRECTORY for the GULF of FINLAND; being a continuation of that for the Baltic Sea; and adapted to the Chart, No. 101	0	2	0
295. SAILING DIRECTIONS for the WEST COAST of SCOTLAND and the HEBRIDES or LEWIS ISLANDS, from Ayr and Glasgow to Cape Wrath and the North Coast of Ireland, to accompany the Chart, No. 64. By ALEX. G. FINDLAY, F.R.G.S.	0	1	6
296. LIGHTHOUSES of the WORLD.—A List and Description of the LIGHTHOUSES of the WORLD, giving their Position, Appearances, and the Character of their Lights. By A. G. FINDLAY, F.R.G.S. Handsomely bound in cloth. 1861.	0	3	6
<p>Supplements, containing the Additions and Changes in the Lighthouses, will be issued free on 1st June, 1862, 1863, & 1864.</p>			
297. Norie's Complete Epitome of Practical Navigation, containing all the necessary Instructions for keeping a Ship's Reckoning at Sea; with the most approved Methods of ascertaining the Latitude by Meridian, Single or Double Altitudes, and the Longitude by Chronometers or Lunar Observations; including a Journal of a Voyage from London to Madeira, and every other particular requisite to form the complete Navigator: the whole being rendered perfectly easy, and illustrated by several Engravings. To which is added a correct and extensive Set of Tables, preceded by a copious Explanation of each Table. Seventeenth Edition, considerably augmented and improved, and adapted to the New Nautical Almanac, published by order of the Lords Commissioners of the Admiralty, 1862. Bound in Sheep, lettered	0	16	0
298. Norie's Complete Set of Nautical Tables, containing all that are requisite, with the Nautical Almanac, in keeping a Ship's Reckoning at Sea, and in ascertaining the Latitude and Longitude by Celestial Observations; including an extensive Table of the Latitudes and Longitudes of the principal Ports, Harbours, Capes, &c., in the World; with several other new and improved Tables; to which is prefixed a copious Explanation of the Tables; likewise Astronomical Problems for finding the Latitude by Meridian Altitudes and Double Altitudes of the Sun, and the Longitude by Chronometers or Lunar Observations; the Rules being adapted to the New Nautical Almanac, published by order of the Lords Commissioners of the Admiralty. Thirteenth Edition, Royal 8vo, sewed	0	12	0
299. The same, half-bound	0	14	0
300. An EPITOME of NAVIGATION. Containing the rudiments of Navigation, and a full explanation of the Astronomical definitions; Latitude by meridian and double altitudes, Variation of the Compass by amplitude and azimuths; easy and improved methods of finding the Longitude by chronometers and lunar observations; directions for finding the principal Fixed Stars; the principles of Great Circle Sailing explained; the method of finding and correcting the Deviation of the Compass; also diagrams and directions to assist the Navigator in heaving-to and sailing from the centre of a rotatory storm, with remarks on the Barometer, &c. (In every case the simplest as well as the most approved rules are adopted. <i>New Edition (just out).</i> By Mrs. JANET TAYLOR	0	16	0

301. The
Sh
ta
a
W

302. Loc
An

303. The
ED

304. Loc
Br
St

305. SEA
ex
Ca

306. PL
an
int
ing
By

307. LOS
im

308. ST
go

309. SUT
ing
pla
Hy
&c
dis
Ma
by
ha
dic
of

310. Har
Fa
jes
W
" P

311. Law
tai
Fo
Ma
Sh

NAUTICAL BOOKS, &c.

889

301. **The PRACTICAL NAVIGATOR.**—Instructions for keeping a Ship's reckoning at Sea, and the best Method of determining Latitude and Longitude by Chronometer and Lunar Observations; with a Journal from Greenock to Teneriffe, and an Appendix. By WILLIAM BLACK. Half-bound, in calf. 1860 0 8 6
302. **Local Marine Board Examinations; A Manual,** by THOS. L. AINSLEY. 1860. Cloth, bound 0 3 6
303. **The Examiner in Seamanship.** By THOS. L. AINSLEY. Fourth Edition. 1867. 0 1 6
304. **Local Marine Board Examinations. Handbook for Officers of the British Mercantile Marine;** with Answers to the Questions on Steam. By Mrs. JANET TAYLOR. Twenty-first Edition. 1860 0 3 0
305. **SEAMANSHIP.**—The Seamanship required in the Ordinary and extra Examinations, arranged in Questions and Answers; Revised by Captain LIDDELL. Sixth Edition. 1860 0 1 0
306. **PLANISPHERE of the FIXED STARS,** of the first, second, third, and fourth magnitudes, accompanied by a Book of Directions, with introductory remarks on the Stellar or Planetary Systems; containing also various illustrative and explanatory problems on Astronomy. By Mrs. JANET TAYLOR 0 7 6
307. **LOSSES AT SEA,** their Causes, and Means of Prevention, and other important subjects. By Capt. J. H. RIDLEY 0 3 6
308. **STEVENS on STOWAGE.**—The Stowage of Ships and their Cargoes, Freights, Charter Parties, &c. Second Edition. 0 7 6
309. **SURVEYING.**—*An Introduction to the Practice of Nautical Surveying;* and the Construction of Sea Charts; illustrated by Thirty-four plates. Translated from the French of *C. F. Beautemps Beaupré,* Hydrographer of the French Marine, Member of the Legion of Honour, &c., by Captain R. COPELAND, of the Royal Navy. With an Appendix, containing *Mr. Dalrymple's Essay on the most commodious Methods of Marine Surveying;* and the Description of Observations by which the Longitudes of Places on the Coasts of Australia, &c., have been settled; by Captain MATTHEW FLINDERS, R.N., &c. Dedicated, by permission, to the Right Hon. the Lords Commissioners of the Admiralty. In Two Volumes, Quarto, boards 1 0 0
310. **Hand-Book of the Law of Storms,** being a Digest of the principal Facts of Revolving Storms, for the use of Commanders in her Majesty's Navy and the Mercantile Marine; Illustrated with numerous Woodcuts. By WILLIAM RADCLIFFE BIRT, Esq., author of the "Hurricane Guide, &c. &c. Demy 8vo., cloth 0 5 0
311. **Laws of Shipping and Insurance,** with a copious Appendix, containing the existing Statutes, Custom-house and Pilots Regulations, Forms of Deeds and Writs, and adapted to the present Mercantile Marine Law. By JAMES LEES, Esq., author of "A Manual for Shipwasters." Seventh Edition. Crown 8vo., cloth 0 10 6

312. **Manual for Shipmasters**, in a Series of Letters addressed to them on their Qualifications, Duties, Powers, Responsibilities, &c., arising from the different situations in which they may be placed during the course of a voyage. A New Edition, greatly enlarged and improved, and adapted to the present state of the British Mercantile Marine Law. By JAMES LEES, Esq., author of "The Laws of Shipping and Insurance," &c. Crown 8vo., cloth 0 6 0
313. **Practical Digest of the Merchant Shipping Act, 1854, 17 & 18 Vict., c. 104**, "An Act to amend and consolidate the Laws relating to Merchant Shipping," methodically arranged; with a full Table of Contents; and a Table of the Repealed Acts. By JAMES LEES, author of "The Laws of Shipping and Insurance;" "The Manual for Shipmasters," &c. Crown 8vo., sewed 0 2 6
314. **Laws of the Customs, with the Tariff, or Customs Table and Customs Forms**; with an Appendix containing the Customs Acts, and the Rules and Orders of the Commissioners of Customs. By JAMES LEES, author of "The Laws of Shipping," &c. Crown 8vo., cloth 0 6 0
315. **Seamen's Friend**, containing a Treatise on Practical Seamanship, with Plates; a Dictionary of Nautical Terms; the Laws relating to the Practical Duties of Master and Seamen. By R. H. DANA. A New Edition, edited and adapted to the British Mercantile Service by JAMES LEES, author of "Laws of Shipping and Insurance." Crown 8vo., cloth 0 5 9
316. **Freighter's Guide and Corn-Merchant's Assistant**; with Tables of First and Second Class Goods, on a Decimal Scale; also, of the Lumber Trade, accompanied by Rules, Examples, and Demonstrations. With a new Set of Tables of proportionate Rates of Freight, by Inspection, forming, at once, a Ready Reckoner and Pocket Companion; together with an extensive Miscellany of compendious Rules on the various and most intricate subjects connected with the Trade. By GEORGE HARRISON. Fourth Edition. Foolscap 8vo., cloth 0 5 0
317. **Treatise on Marine and Naval Architecture, or Theory and Practice blended in Ship Building**. By J. W. GRIFFITHS, Marine and Naval Architect. *Illustrated with upwards of Fifty Plates.* Royal 4to., cloth 1 11 6
318. **THE PHYSICAL GEOGRAPHY of the SEA**. By M. F. MAURY, LL.D. New Edition, with Addenda and numerous Illustrative Charts and Woodcuts. Crown 8vo., cloth 0 6 0
319. **PLANISPHERES of the FIXED STARS and CONSTELLATIONS** of the Northern and Southern Hemispheres; constructed on the Plane of the Equator, divided into Degrees, &c., for the use of Persons requiring the Elements of Astronomic Knowledge. On circles of 26 inches diameter. The pair, plain 0 8 0
Coloured 0 16 0
320. **A new and beautiful Sheet of the MARITIME FLAGS of all NATIONS**, with many particular Flags of Corporate Bodies, &c. On large Atlas Paper, 33 inches by 25½. Coloured 0 7 6
Or in leaves, as a Book, with an Index 0 8 0

321. D
322. W
323. A
324. A
325. A
326. A
327. A
328. F
329. A
330. T
331. T
332. T
333. A
334. T

NAUTICAL BOOKS, &c.

331. Dampier's Flag Signals, for Hand and Sea purposes; a simple and very efficient System. On a sheet.....	1 0
332. Walker's New Universal and Perpetual Tide Table; with a List of the Times that make High Water, at Full and Change, at the different Ports on the Coasts of Europe, America, &c. New Edition	0 5 0
333. A Drawing-Book of Heads and Sterns of Ships. On Eight Monochrome Plates. Royal Quarto.....	0 5 0
334. A Second Part of Ditto. On Eight Plates.....	0 5 0
335. A Third Part of Ditto; consisting of finished Ships, viz., Frigates, East Indiamen, &c. Eight Plates.....	0 5 0
336. A Fourth Part of Ditto; containing Six Prints of Exceeding Cutters.....	0 4 0
337. A Fifth Part of Ditto. Four Plates.....	0 2 0
338. Four Aquatinta Prints of Shipping, by HILL. Oval, with Square Corners; viz., 1. A Fresh Breeze; 2. A Brisk Gale; 3. A Calm; 4. At Anchor. Plain.....	0 4 0
Coloured.....	0 6 0
339. A small Book of Ornaments for Ship Carvers. On Nine Plates.....	0 1 6
340. The Union Flag. Quarto, Coloured.....	0 1 0
341. The Royal Standard. Quarto, Coloured.....	0 1 0
342. The Royal Arms, since the accession of Queen Victoria. Quarto, Coloured.....	0 1 0
343. A Table of the Equation of Time; showing the Number of Minutes and Seconds in every Day of the Year.....	0 1 0
344. The Mariner's Compass. A small Plate, coloured.....	0 0 0

INDEX

259	Africa, Western Coast of	13	259	Calif.	259
277	" from Gibraltar to Cape Verde	13	130	Canada	130
216	" Cape Verde to Cape St. Anne	13	131	Cape	131
219	" Cape St. Anne to Cape Formosa	13	162	Carib	162
220	" Cape Formosa to Cape Negro	13	192	Carth	192
220	" Southern Coast of	13	97	Catta	97
211	" South	20	247	Ceram	247
209	" North East Coast of, and Arabia, Persia, &c.	19	217	Ceylon	217
184	America, Coast of, from Halifax to Philadelphia	16	218	" "	218
187	" " Philadelphia to Havana	16	237	China	237
188	" " Cape Cod to Havana	16	221	" "	221
261	" Central, West Coasts of	23	236	China	236
262	" South, West Coast of	24	155	Cod,	155
167	Anguilla, &c., Islands	17	193	Color	193
176	Antigua Island	17	217	Color	217
209	Arabia, Persia, &c.	19	124	Cong	124
212	Archipelago	12	60	Cork	60
3	Atlantic Ocean, North	1	186	Cura	186
11	" " South, or Ethiopic	3	90	Denn	90
3	" " General Chart of	2	178	Dom	178
4, 6	" " Separate sheets of ditto	2	38	Dove	38
7	" " or Western Ocean	2	208	East	208
21	Atlantic Ocean, North and South	3	71	Eng	71
205	Atlantic Ocean, South, or Ethiopic, new Sailing Directory for	24	72	" "	72
204	" " Memoir of	25	73	" "	73
251	Australia	22	74	" "	74
250	" South-East Coasts	22	43	" "	43
249	" Van Diemen's Land, &c.	22	35	Eng	35
138	Azores, or Western Islands	14	36	" "	36
139	" Madras, and Canary Islands, &c.	14	39	" "	39
233	Ball, Pondi, and Respondi, Straits	21	40	" "	40
99	Baltic Sea	11	41	" "	41
100	" with Gulf of Bothnia and Finland	11	42	" "	42
231	Banco, Strait of	21	37	Eng	37
243	Banda Sea, and the Moluccas	21	11	Eth	11
246	Banda Islands and Harbours, large scale	22	265	" "	265
183	Barbadoes	17	113	Eux	113
103	Barbary, Spain, and Portugal	11	206	Fal	206
68	" Belgium, France and Netherlands	10	126	Fal	126
89	" Belgium and France, from Boulogne to the Texel	10	101	Fin	101
139	Belle Isle, Strait of	14	48	Fov	48
221	Bengal, North part of Bay of	20	89	Frr	89
192	Bermudas, or Somer's Islands	14	88	Frr	88
102	Biscay, Bay of	11	215	Frr	215
113	Black Sea, or Euxine	12	218	Ga	218
247	" " " " 28 Plans of	12	232	Ga	232
244	Booro, Gillolo, Ceram, and New Guinea	22	90	Ge	90
100	Bothnia and Finland, Gulf of, and Baltic Sea	11	108	Gil	108
198	Brasil, New Chart of	18	247	Gi	247
202	" " " " North Coast of	19	126	Go	126
204	" " " " East Coast of	19	148	Gr	148
206	" " " " Harbours of	19	192	Gr	192
			185	Gr	185

INDEX

37

No.	PAGE
27 Bristol, English, and St. George's Channels	6
63 Bristol Channel	7
60 Bristol to Cork	7
266 California and Oregon	23
130 Canary Islands, Madeira, &c.	14
131 Cape Verde Islands.....	14
162 Caribbee and West India Islands.....	16
192 Carthagera to Great River	16
97 Cattegat, &c.	10
247 Ceram, Gillolo, and New Guinea	22
217 Ceylon, Colombo Harbour.....	20
218 " Port de Galle.....	20
237 China, Coast of	21
221 " Japan Islands, and Oriental Archipelago	21
236 Chinese Sea.....	21
166 Cod, Cape, to Havanna	15
193 Colombia, North-East Coast	18
217 Colombo Harbour, Ceylon.....	20
124 Congo River	13
60 Cork to Bristol	7
186 Curaçao Island	17
90 Denmark, Holland, and Germany	10
178 Dominica.....	17
38 Dover, The Strait of	6
208 Eastern Seas, and Indian Ocean	19
71 England, East Coast of, from Orfordness to Flamborough Head.....	8
72 " " " Orfordness to the Tyne	8
73 " " South-Eastern Coast of.....	9
74 " " and Scotland, East Coast of	9
43 " " South Coasts of	6
35 English Channel.....	5
36 " " with Plans of Harbours.....	5
22 " " to Scilly, &c.	5
39 " " Harbour and Islands of.....	6
40 " " Eastern Harbours of	6
41 " " Central Harbours and Channel Islands	6
42 " " Western Harbours and Islands	6
37 English, Bristol, and St. George's Channels	6
11 Ethiopic, or South Atlantic Ocean	3
265 " " " " New Sailing Directory for	24
113 Euxine, or Black Sea.....	12
208 Falkland Islands, The Western	19
126 False Bay, and Cape of Good Hope.....	13
101 Finland, Gulf of	11
48 Fowey Harbour	7
89 France and Belgium, from Boulogne to the Texel	10
88 France, Belgium, and Netherlands	10
215 France, Isle of, or Mauritius.....	20
218 Galle, Port de, Ceylon	20
232 Gaspar Straits.....	21
90 Germany, Holland, and Denmark	10
108 Gibraltar, Strait of.....	12
247 Gillolo, Ceram, and New Guinea	22
126 Good Hope, Cape of, and False Bay	13
148 Great Placentia, Harbour of, Newfoundland	15
192 Great River to Carthagera	16
185 Grenada Island	17

	PAGE
177 Guadalupe	17
50 Guernsey, Jersey, &c.	7
51 Guernsey, with Sark, Herm, Jethou	7
161 Gulf and Windward Passages	16
194 Guyana, between the Corentyn and Pomaroon	18
195 " from the Orinoco to Berbice	18
196 " and Surinam	18
153 Halifax Harbour, Nova Scotia	15
70 Harwich, Harbour and Environs of	8
64 Hebrides, and West Coast of Scotland	8
172 Hispaniola	17
90 Holland, Germany, and Denmark	10
80 Holy Island	9
191 Honduras Bay	18
222 Hoogly River	20
210 India, Sumatra, Malaya, &c.	20
22 Indian and Pacific Oceans	4
208 " Ocean, and Eastern Seas	18
212 " " Southern, and Kerguelen Land	20
61 Ireland, All Round, and St. George's Channel	8
62 " Northern Coasts of	8
63 " Southern Coasts of	8
203 Jaguarybe River, Brasil	19
169 Jamaica	17
171 " smaller Map	17
228 Japan Islands, China, &c.	21
229 Javan Sea, with Java Island, &c.	21
50 Jersey, Guernsey, &c.	7
212 Kerguelen Land, and Southern Indian Ocean	20
140 Labrador, East Coast of	14
141 " South Coast of	15
238 Macao	21
234 Macassar Strait	21
214 Madagascar, St. Augustine's and Tullea Bays	20
130 Madeira, Canary Islands, &c.	14
110 Mahon, Port, Minorca, large Scale	12
210 Malaga, Sumatra, India, &c.	20
180 Martinico, or Martinique	17
215 Mauritius, or Isle of France	20
104 Mediterranean Sea	11
32 Medway and Thames	5
159 Mexico, Gulf of, and West Indies	16
188 " " or Mexican Sea	18
189 " " with Isthmus of Panama and Darien, large scale	18
69 Milford Haven	7
243 Moluccas, and Banda Sea	21
88 Netherlands, France, and Belgium	10
175 Nevis and St. Christopher Islands	17
158 New York	16
248 New Guinea, &c.	23
253 New Zealand, Map of	22
257 New Zealand	22
133 Newfoundland	14
136 " South-East part of	14
137 " South Coast, Captain Cook's Survey	14
138 " West Coast, " "	14
147 " St. John's Harbour	15

146 New	149
224 Nico	86 Nort
87 " "	87 " "
68 Nort	69 " "
10 Nort	91 Norw
160 Nov	257 Ocea
263 Oreg	228 Ori
84 Orkn	22 PAC
25-28	238 Paci
260	255 "
256	266 "
209 Pers	240 Phil
233 Pond	218 Port
110 Port	103 Port
167 Pric	225 Pulo
256 Pulo	216 Rodr
173 Ruat	49 Seill
64 Scot	66
67	122 Sher
85 Shet	121 Sierr
127 Simo	132 Som
242 Sorsc	98 Soun
11 South	226 Sout
207 Sout	103 Spai
152 Span	214 St. A
167 St. B	175 St. C
174 St. C	172 St. D
61 St. G	54
37 St. G	

INDEX

PAGE.		PAGE
17	146 Newfoundland, Harbour of Great Placentia	161
7	149 " Trinity Harbour	15
7	224 Nicobar and Andaman Islands	20
16	66 North Sea, on large scale	9
18	67 " " Southern Part of	10
18	68 North Sea	8
18	69 " " Southern Part of	8
15	10 Northern Ocean	2
8	91 Norway, Coasts of	10
8	160 Nova Scotia	15
17	257 Oceanic Islands, and New Zealand	22
10	263 Oregon and California	28
9	228 Oriental Archipelago, &c.	21
18	84 Orkneys, &c.	9
20	22 PACIFIC AND INDIAN OCEANS	4
20	25-28 " " " " Sheets of Ditto	4
18	258 Pacific Ocean, North	23
20	260 " " South	23
8	255 " " Western part	22
8	256 " " Reduced general Chart	22
8	266 " " Directory for	24
19	209 Persia, Arabia, &c.	19
17	240 Philippine Islands	21
17	233 Pondi, Bali, &c., Straits	21
21	216 Port de Galle, Ceylon	20
21	110 Port Mahon, Minorea, large scale	12
7	103 Portugal, Spain, and Barbary	11
20	187 Prickly Pear, &c., Islands	17
14	225 Pulo Pinang, or Prince of Wales's Island	20
15	236 Pulo Timon Bay	21
21	216 Rodrigue Island	20
21	179 Ruatan Island	17
20	49 Scilly Islands	7
14	64 Scotland, West Coast of, and Hebrides	8
12	66 " " " from the Clyde to Ardnamurchan Point	8
20	67 " " " from Skye to Cape Wrath	8
17	122 Sherbro' River, with Yawry Bay, &c.	13
20	85 Shetland Islands, &c.	9
11	121 Sierra Leone River, Entrance of	13
5	127 Simon's Bay, Cape of Good Hope	13
16	132 Somers' Islands, or Bermudas	14
18	242 Sorsogan Harbour, Luzon Island	21
18	98 Sound and Danish Grounds	11
7	11 South Atlantic, or Ethiopic Ocean	3
21	226 South Channel	20
10	207 South Shetland, with Coronation Island, &c.	19
17	103 Spain, Portugal, and Barbary	11
16	152 Spanish River, Breton Island	15
22	214 St. Augustine's and Tullea Bays, Madagascar	20
22	167 St. Bartholomew, St. Martin, &c., Islands	17
22	175 St. Christopher, or St. Kitt's, and Nevis Islands	17
14	174 St. Croix Island	17
14	172 St. Domingo, or Hispaniola	17
14	61 St. George's Channel, and All Round Ireland	8
14	54 " " " " with Bristol Channel, &c.	7
15	37 St. George's, English, and Bristol Channels	6

NO.	PAGE
147	St. John's Harbour, Newfoundland..... 15
175	St. Kitt's and Nevis Islands 17
142	St. Lawrence, Gulf of..... 15
143	" " " River of 15
179	St. Lucia Island 17
167	St. Martin, St. Bartholomew, &c., Islands 17
161	St. Vincent Island 17
241	Subec Port, Lupon Island 21
210	Sumatra, India, Malaga, &c..... 20
197	Surinam River..... 18
152	Sydney Harbour, Breton Island 15
262	Tasmania, or Van Diemen's Land 22
34	Thames, with Strait of Dover, &c. 5
32	" " and Medway 5
33	" " South Channels of 5
37	Three Channels, English, Bristol, St. George's 6
239	Tigris River..... 21
182	Tobago Island 17
29	Track Chart of the World..... 5
31	" " from England to Australia, Canton, &c. 5
30	" " " " Round Cape Horn 5
220	Trincomalay 20
187	Trinidad Island 18
149	Trinity Harbour, Newfoundland 15
214	Tullea and St. Augustine's Bays, Madagascar 20
166	Turks' Islands and Bank 17
156	United States, Coast of, from Cape Cod to Savanna 15
249	Van Diemen's Land, Australia, &c. 22
131	Verde, Cape, Islands 14
168	Virgin Islands..... 17
58	Wales 7
160	West India Islands..... 16
162	" " " and Caribbee Islands..... 16
164	" " " " Harbour Plans, on 2 sheets 16, 17
159	West Indies and Gulf of Mexico 16
128	Western Islands, or Azores 14
129	" " " Madeiras, Canary Isles, &c. 14
65	Whithorn, Harbour of 8
47	Wight, Isle of..... 6
161	Windward and Gulf Passages 16
1	World, Large Chart of, on Mercator's projection 1
2	" " " " reduced 1
29	" " " " Track Chart of 5
122	Yawry Bay, Sherbro' River, &c. 13

