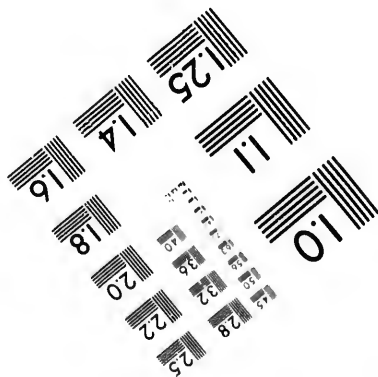
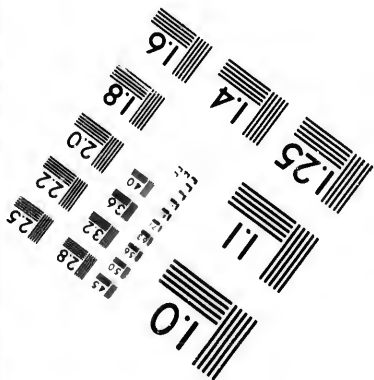
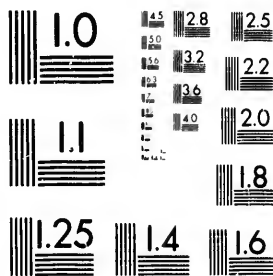


**IMAGE EVALUATION
TEST TARGET (MT-3)**



28
22
22
20

**CIHM/ICMH
Microfiche
Series.**

**CIHM/ICMH
Collection de
microfiches.**

10



Canadian Institute for Historical Microreproductions

Institut canadien de microreproductions historiques

1980

Technical and Bibliographic Notes/Notes techniques et bibliographiques

The Institute has attempted to obtain the best original copy available for filming. Features of this copy which may be bibliographically unique, which may alter any of the images in the reproduction, or which may significantly change the usual method of filming, are checked below.

L'Institut a microfilmé le meilleur exemplaire qu'il lui a été possible de se procurer. Les détails de cet exemplaire qui sont peut-être uniques du point de vue bibliographique, qui peuvent modifier une image reproduite, ou qui peuvent exiger une modification dans la méthode normale de filmage sont indiqués ci-dessous.

- Coloured covers/
Couverture de couleur
- Covers damaged/
Couverture endommagée
- Covers restored and/or laminated/
Couverture restaurée et/ou pelliculée
- Cover title missing/
Le titre de couverture manque
- Coloured maps/
Cartes géographiques en couleur
- Coloured ink (i.e. other than blue or black)/
Encre de couleur (i.e. autre que bleue ou noire)
- Coloured plates and/or illustrations/
Planches et/ou illustrations en couleur
- Bound with other material/
Relié avec d'autres documents
- Tight binding may cause shadows or distortion
along interior margin/
La reliure serrée peut causer de l'ombre ou de la
distortion le long de la marge intérieure
- Blank leaves added during restoration may
appear within the text. Whenever possible, these
have been omitted from filming/
Il se peut que certaines pages blanches ajoutées
lors d'une restauration apparaissent dans le texte,
mais, lorsque cela était possible, ces pages n'ont
pas été filmées.
- Additional comments:/
Commentaires supplémentaires:

- Coloured pages/
Pages de couleur
- Pages damaged/
Pages endommagées
- Pages restored and/or laminated/
Pages restaurées et/ou pelliculées
- Pages discoloured, stained or foxed/
Pages décolorées, tachetées ou piquées
- Pages detached/
Pages détachées
- Showthrough/
Transparence
- Quality of print varies/
Qualité inégale de l'impression
- Includes supplementary material/
Comprend du matériel supplémentaire
- Only edition available/
Seule édition disponible
- Pages wholly or partially obscured by errata
slips, tissues, etc., have been refilmed to
ensure the best possible image/
Les pages totalement ou partiellement
obscurcies par un feuillet d'errata, une pelure,
etc., ont été filmées à nouveau de façon à
obtenir la meilleure image possible.

This item is filmed at the reduction ratio checked below/
Ce document est filmé au taux de réduction indiqué ci-dessous.

10X	12X	14X	16X	18X	20X	22X	24X	26X	28X	30X	32X
				✓							

The copy filmed here has been reproduced thanks to the generosity of:

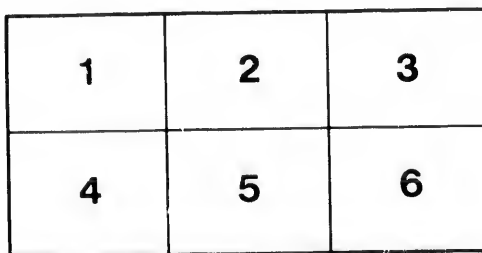
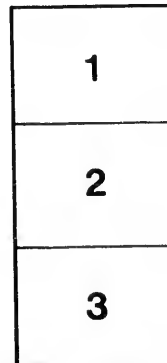
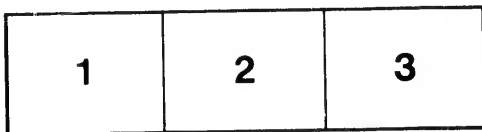
Saint John Regional Library

The images appearing here are the best quality possible considering the condition and legibility of the original copy and in keeping with the filming contract specifications.

Original copies in printed paper covers are filmed beginning with the front cover and ending on the last page with a printed or illustrated impression, or the back cover when appropriate. All other original copies are filmed beginning on the first page with a printed or illustrated impression, and ending on the last page with a printed or illustrated impression.

The last recorded frame on each microfiche shall contain the symbol \rightarrow (meaning "CONTINUED"), or the symbol ∇ (meaning "END"), whichever applies.

Maps, plates, charts, etc., may be filmed at different reduction ratios. Those too large to be entirely included in one exposure are filmed beginning in the upper left hand corner, left to right and top to bottom, as many frames as required. The following diagrams illustrate the method:



L'exemplaire filmé fut reproduit grâce à la générosité de:

Saint John Regional Library

Les images suivantes ont été reproduites avec le plus grand soin, compte tenu de la condition et de la netteté de l'exemplaire filmé, et en conformité avec les conditions du contrat de filmage.

Les exemplaires originaux dont la couverture en papier est imprimée sont filmés en commençant par le premier plat et en terminant soit par la dernière page qui comporte une empreinte d'impression ou d'illustration, soit par le second plat, selon le cas. Tous les autres exemplaires originaux sont filmés en commençant par la première page qui comporte une empreinte d'impression ou d'illustration et en terminant par la dernière page qui comporte une telle empreinte.

Un des symboles suivants apparaîtra sur la dernière image de chaque microfiche, selon le cas: le symbole \rightarrow signifie "A SUIVRE", le symbole ∇ signifie "FIN".

Les cartes, planches, tableaux, etc., peuvent être filmés à des taux de réduction différents. Lorsque le document est trop grand pour être reproduit en un seul cliché, il est filmé à partir de l'angle supérieur gauche, de gauche à droite, et de haut en bas, en prenant le nombre d'images nécessaire. Les diagrammes suivants illustrent la méthode.

trata
o

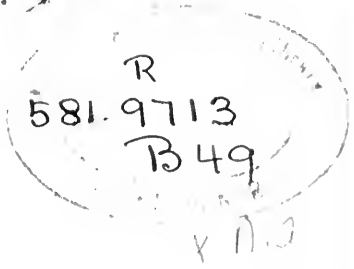
elure,
n à



OFFICE OF THE SECRETARY OF THE ARMY

J. P. Leitch

Stack room.



TRANSACTIONS

OF THE

Ottawa Natural History Society.

List of Plants collected by Mr. B. Billings in the vicinity of the City of Ottawa, during the Summer of 1866.

RANUNCULACEÆ.

- Hepatica triloba, Chaix..... April 20.
- " acutiloba, D.C..... do
- Caltha palustris, L..... May 1.
- Thalictrum dioicum, L..... May 16.
- Ranunculus abortivus, L..... do
- Coptis trifolia, Salisb..... do
- Actæa spicata, L., var. alba. Michx..... do
- Aquilegia Canadensis, L..... do
- Anemone Pennsylvanica, L..... June 5.
- Ranunculus recurvatus, Poir..... do
- " acris, L..... do
- Anemone Virginiana, L..... June 22.
- Thalictrum Cornuti, L..... do
- Ranunculus Pennsylvanicus July 14.
- " Flammula, var. reptans, L..... July 21.
- Clematis Virginiana, L..... August.

MENISPERMACEÆ.

- Menispermum Canadense, L..... July 1.

BERBERIDACEÆ.

Caulophyllum thalictroides, Michx.....May 1.

NYMPHÆACEÆ.

Nuphar advena, Ait.....June 15.

“ *Kalmiana*, Pursh.....July 28.

Nymphaea odorata, Ait.....July 31.

SARRACENIACEÆ.

Sarracenia purpurea, L.....June 15.

PAPAVERACEÆ.

Sanguinaria Canadensis, L.....April 25.

FUMARIACEÆ.

Dicentra Canadensis, D.C.....April 25.

“ *Cucullaria*, D.C.....May 7.

Corydalis aurea, Willd.....June 5.

Adlumia cirrhosa, Raf.....July 1.

CRUCIFERÆ.

Dentaria laciniata, Muhl.....May 1.

Capsella bursa-pastoris, Mœnch..... do

Turritis stricta, Graham.....May 16.

Cardamine hirsuta, L.....June 22.

Dentaria diphylla, L..... do

Lepidium Virginicum, L.....June 5.

Nasturtium palustre, D.C.....June 22.

Sinapis arvensis, L..... do

Sisymbrium officinale, Scop.....July 14.

Nasturtium officinale, R. Br..... August.

Erysimum chiranthoides, L..... do

VIOLACEÆ.

Viola blanda, Willd.....May 1.

“ *cucullata*, Ait.....May 16.

VIOLACEÆ.—(Continued.)

1.	<i>Viola Muhlenbergii</i> , Torr.....	May 16.
	“ <i>Canadensis</i> , L.....	do
	“ <i>pubescens</i> , Ait	do

DROSERACEÆ.

31.	<i>Drosera rotundifolia</i> , L.....	July 31.
-----	--------------------------------------	----------

HYPERICACEÆ.

15.	<i>Hypericum perforatum</i> , L.....	July 14.
	“ <i>ellipticum</i> , Hook.....	July 21.
	“ <i>mutilum</i> , L.....	do
25.	<i>Elodea Virginica</i> , Nutt.....	July 31.

CARYOPHYLLACEÆ.

25.	<i>Cerastium viscosum</i> , L.....	May 1.
.7	<i>Arenaria serpyllifolia</i> , L.....	June 5.
5.	<i>Stellaria longifolia</i> , Muhl.....	do
1.	<i>Silene Antirrhina</i> , L.....	June 15.
	“ <i>noctiflora</i> , L.....	June 22.
	<i>Mœhringia lateriflora</i> , L.....	do
1.	<i>Silene inflata</i> , Smith.....	July 14.
	“ <i>armeria</i> , L.....	July 28.
16.	<i>Saponaria officinalis</i> , L.....	July 31.
22.		

PORTULACACEÆ.

5.	<i>Claytonia Caroliniana</i> , Michx.....	May 1.
22.	<i>Portulaca oleracea</i> , L.....	July 31.

MALVACEÆ.

14.	<i>Malva rotundifolia</i> , L	July 31.
-----	-------------------------------------	----------

TILIACEÆ.

	<i>Tilia Americana</i> , L.....	July 28.
--	---------------------------------	----------

OXALIDACEÆ.

1.	<i>Oxalis stricta</i> , L	June 15.
16.		

GERANIACEÆ.

Geranium Carolinianum, L..... June 5

BALSAMINACEÆ.

Impatiens fulva, Nutt July 28.

ANACARDIACÆ.

Rhus toxicodendron, L June 15.

“ typhina, L..... July 14.

VITACEÆ.

Vitis cordifolia, Michx..... June 15.

CELASTRACEÆ.

Celastrus scandens, L..... June 22.

SAPINDACEÆ.

Acer rubrum, L..... April 20.

Staphylea trifolia, L..... June 5.

Acer spicatum, Lam..... do

POLYGALACEÆ.

Polygala Senega, L..... June 5.

“ paucifolia, Willd..... June 10.

LEGUMINOSÆ.

Trifolium repens, L..... June 5.

Medicago lupulina, L..... do

Trifolium pratense, L..... June 15.

Lathyrus palustris, L..... do

Vicia sativa, L..... July 1.

Melilotus alba, Lam..... July 28.

Astragalus Canadensis, L..... do

“ Cooperi, Gray..... do

Desmodium Canadense, D.C..... do

Apios tuberosa, Moench..... August.

Amphicarpæa monoica, Nutt..... do

ROSACEÆ.

5	Rubus strigosus, Michx.....	June 15.
	“ occidentalis, L.....	do
	“ villosus, Ait.....	do
28.	“ odoratus, L.....	do
	Potentilla Norvegica, L.....	June 22.
	Spiræa opulifolia, L.....	July 1.
15.	Geum album, Gmelin.....	do
14.	“ strictum, Ait.....	do
	Potentilla Anserina, L.....	do
	Spiræa salicifolia, L.....	July 15.
15.	Fragaria Virginiana, Ehrhart.....	May 1.
	“ vesca, L.....	do
22.	Prunus Americana, Marsh.....	May 16.
	Prunus Pennsylvanica, L.....	do
	Waldsteinia fragarioides, Tratt.....	do
20.	Rubus triflorus, Richardson.....	do
5.	Amelanchier Canadensis, Torr & Gray.....	do
o	Prunus Virginiana, L.....	May 22.
	“ serotina, Ehrhart.....	do
5.	Cratægus tomentosa, L.....	June 5.
10.	Rosa blanda, Ait.....	June 15.
	Spiræa tomentosa, L.....	July 28.
5.	Agrimonia Eupatoria, L.....	do

ONAGRACEÆ.

15.	Circæa alpina, L.....	July 1.
o	Ænothera biennis, L.....	July 14.
1.	“ pumila, L.....	do
28.	Epilobium angustifolium, L.....	do
o	“ coloratum, Muhl.....	do
o	“ palustre var. lineare, L.....	July 28.
o	Circæa lutetiana, L.....	do
ust.	Myriophyllum spicatum, L.....	do

GROSSULACEÆ.

Ribes Cynosbati, L.....	May 16
“ lacustre, Poir.....	do
“ prostratum, L’Her.....	do
“ floridum, L.....	May 22.

CRASSULACEÆ.

Penthorum sedoides, L.....	July 28.
----------------------------	----------

SAXIFRAGACEÆ.

Mitella diphylla, L.....	May 16.
Tiarella cordifolia, L.....	do
Chrysosplenium Americanum, Schwein.....	do
Saxifraga Virginiensis, Michx.....	May 22.
Mitella nuda, L.....	June 5.

UMBELLIFERÆ.

Sanicula Marilandica, L.....	June 15.
Osmorrhiza brevistylis, D.C.....	do
Pastinaca sativa, L.....	June 22.
Cryptotaonia Canadensis, D.C.....	July 1.
Cicuta maculata, L.....	July 28.
Sium lineare, Michx.....	do

ARALIACEÆ.

Aralia trifolia.....	May 16.
“ nudicaulis, L.....	June 15.
“ racemosa, L.....	August.

CORNACEÆ.

Cornus Canadensis, L.....	June 5.
“ stolonifera, Michx.....	do
“ alternifolia, L.....	June 15.
“ circinata, L’Her.....	July 7.

CAPRIFOLIACEÆ.

Lonicera ciliata, Muhl.....	May 16.
Sambucus pubens, Michx.....	do

CAPRIFOLIACEÆ.—(Continued.)

16	Viburnum lantanoides, Michx.....	May 16.
	Linnæa borealis, Gronov.....	June 5.
	Triosteum perfoliatum, L.....	June 15.
22.	Viburnum opulus, L.....	do
	" lentago, L.....	do
28.	Diervilla trifida, Mœnch.....	June 22.
	Viburnum acerifolium, L.....	do
16.	Symphoricarpus racemosus, Michx.....	July 1.
	Sambucus Canadensis, L.....	July 14.

RUBIACEÆ.

22.	Galium triflorum, Michx.....	June 15.
5.	" trifidum, L.....	June 22.
	" asprellum, Michx.....	July 28.
15.	Cephalanthus occidentalis, L.....	August.

COMPOSITÆ.

22.	Taraxacum dens-leonis, Desf.....	May 1.
1.	Antennaria plantaginifolia.....	May 16.
28.	Erigeron Philadelphicum.....	June 15.
	Leucanthemum vulgare, Lam.....	do
	Achillea millefolium, L.....	June 30.
16.	Senecio aureus, L.....	do
15.	Erigeron annuum, Pers.....	July 1.
t.	" strigosum, Muhl.....	do
	Maruta cotula, D.C.....	do
5.	Antennaria margaritacea, R. Br.....	July 14.
	Cirsium arvense, Scop.....	do
15.	Rudbeckia hirta, L.....	July 21.
7.	Eupatorium purpureum, L.....	July 28.
	Erigeron Canadense, L.....	do
	Gnaphalium uliginosum, L.....	do
16.	Cirsium lanceolatum, Scop.....	do
	Lactuca elongata, Muhl.....	do

(COMPOSITÆ.—*Continued.*)

Eupatorium perfoliatum, L.....	July 31.
Aster ptarmicoides, Torr & Gray.....	do
Bidens Beckii, Pursh.....	do
Lappa major, Gærnt.....	do
Eupatorium ageratoides, L.....	August.
Aster macrophyllus, L.....	do
“ cordifolius, L.....	do
“ miser, L.....	do
“ simplex, Willd.....	do
“ puniceus, L.....	do
Solidago squarrosa, Muhl.....	do
“ bicolor, L.....	do
“ altissima, L.....	do
“ Canadensis, L.....	do
“ gigantea, Ait.....	do
“ lanceolata, L.....	do
Bidens frondosa, L.....	do
Helenium autumnale, L.....	do
Nabalus albus, Hook.....	August.
“ altissimus, Hook.....	do

LOBELIACEÆ.

Lobelia inflata, L.....	July 28.
“ cardinalis, L.....	July 31.
“ Kalmii, L.....	do

CAMPANULACEÆ.

Campanula rotundifolia, L.....	June 22.
“ aparinoides, Pursh.....	July 28.

ERICACEÆ.

Chiogenes hispidula, Torr & G.....	May 16.
Ledum latifolium, Ait.....	May 22.
Vaccinium macrocarpon, Ait.....	June 15.
Pyrola rotundifolia, L.....	June 22.

ERICACEÆ.—*Continued.*

Pirola secunda.....July 1.
 Kalmia angustifolia, L.....July 14.

PLANTAGINACEÆ.

Plantago major, L.....July 14.

PRIMULACEÆ.

Trientalis Americana, PurshMay 22.
 Naumburgia thyrsoiflora, Reichenb..... do
 Lysimachia stricta, AitJuly 14.
 " ciliata, L..... do

LENTIBULACEÆ.

Utricularia vulgaris, L.....July 21.

OROBANCHACEÆ.

Epiphegus Virginiana, Bart.....August.

SCROPHULARIACEÆ.

Veronica serpyllifolia, L.....May 16.
 " peregrina, L.....June 5.
 " scutellata, L.....June 22.
 Verbascum thapsus, L.....July 14.
 Mimulus ringens, L..... do
 Ilysanthes gratioides, Benth.....July 28.
 Gratiola Virginiana, L.....July 31.
 Chelone glabra, L..... August.
 Pedicularis Canadensis, L..... May 22.
 Pentstemon pubescens, Solander..... July.

VERBENACEÆ.

Verbena hastata, L..... July 14.
 Phryma leptostachya, L..... August.

LABIATÆ.

Scutellaria parvula, Michx.....June 5
 Brunella vulgaris, L.....June 22.
 Leonurus cardiaca, L.....July 1.

LABIATÆ.—*Continued.*

Mentha Canadensis, L.....	July 14.
Nepeta Cataria, L.....	do
Stachys palustris, L.....	do
Scutellaria galericulata, L.....	July 21.
“ lateriflora, L.....	do
Lycopus Europæus, L.....	July 28.
Galopsis Tetrahit, L.....	do
Calamintha clinopodium, Benth.....	August.

BORRAGINACEÆ.

Cynoglossum officinale, L.....	June 5.
Lithospermum officinale, L.....	June 22.
Echinopspermum Lappula, L.....	do

CONVOLVULACEÆ.

Calystegia sepium, R. Br.....	July 14.
-------------------------------	----------

SOLANACEÆ.

Hyoseyamus niger, L.....	July 7.
Solanum nigrum, L.....	July 21.
Datura stramonium, L.....	July 28.

GENTIANACEÆ.

Menyanthes trifoliata, L.....	May 22.
Gentiana Andrewsii, Griseb.....	Sept.

APOCYNACEÆ.

Apocynum androsæmifolium, L.....	June 22.
“ cannabinum, L.....	July 7.

ASCLEPIADACEÆ.

Asclepias Cornuti, Decaisne.....	July 14.
“ incarnata, L.....	do

OLEACEÆ.

Fraxinus Americana, L.....	May 22.
“ sambucifolia, Lam.....	do
“ pubescens, Lam.....	do

ARISTOLOCHIACEÆ.

Asarum Canadense, L.....May 22.

CHENOPODIACEÆ.

Blitum capitatum, L.....June 22.

Cheopodium album, L.....July 14.

“ hybridum, L do.

AMARANTACEÆ.

Amarantus retroflexus, L.....July 21.

POLYGONACEÆ.

Rumex verticillatus, L.....June 22 to 30.

“ crispus, L..... do

Polygonum aviculare, L.....July 7.

“ persicaria, L.....July 14.

“ nodosum var. incarnatum, Pers.....July 23.

“ Pennsylvanicum, L..... do

“ amphibium, L..... August.

“ hydropiper, L..... do

“ acre, H. B. K..... do

“ arifolium, L..... do

“ sagittatum, L..... do

“ cilinode, Michx..... do

THYMELEACEÆ.

Dirca palustris, L.....April 26.

ELÆAGNACEÆ.

Shepherdia Canadensis, Nutt.....April 26.

SANTALACEÆ.

Comandra umbellata, Nutt.....June 5.

EUPHORBIACEÆ.

Euphorbia Helioscopia, L.....July 21.

“ maculata, L.....July 31.

Acalypha Virginica, L..... do

URTICACEÆ.

<i>Ulmus Americana</i> , L.....	April 26.
“ <i>fulva</i> , Michx	April 26.
“ <i>racemosa</i> , Thomas.....	April 26.
<i>Laportea Canadensis</i> , Gaudich.....	July 21.
<i>Urtica gracilis</i> , Ait.....	July 28.
<i>Cannabis sativa</i> , L.....	do
<i>Pilea pumila</i> , Gray.....	July 31.
<i>Bœhmeria cylindrica</i> , Willd.....	do

JUGLANDACEÆ.

<i>Juglans cinerea</i> , L.....	May 22.
---------------------------------	---------

CUPULIFERÆ.

<i>Corylus rostrata</i> , Ait.....	April 20.
<i>Quercus macrocarpa</i> , Michx	May 16.
“ <i>rubra</i> , L.....	do
<i>Carpinus Americana</i> , Michx.....	do
<i>Ostrya Virginica</i> , Willd.....	do

BETULACEÆ.

<i>Alnus incana</i> , Willd.....	April 20.
<i>Betula papyracea</i> , Ait.....	May 1.
“ <i>excelsa</i> , Ait.....	May 22.

SALICACEÆ.

<i>Salix discolor</i> , Muhl.....	April 20.
<i>Populus tremuloides</i> , Michx.....	April 20.
“ <i>grandidentata</i> , Michx.....	do
“ <i>balsamifera</i> , L.....	do
<i>Salix cordata</i> , Muhl.....	May 16.
“ <i>rostrata</i> , Rich.....	June 22.
“ <i>lucida</i> , Muhl.....	do

CONIFERÆ.

<i>Taxus boreata</i> , L, var. <i>Canadensis</i>	April 20.
<i>Thuja occidentalis</i> , L.....	May 16.
<i>Juniperus communis</i> , L.....	do

ARACEÆ.

il 26.	<i>Arisæma triphyllum</i> , Torr.....	May 22.
il 26.	<i>Acorus calamus</i> , L.....	June 15.
il 26.	<i>Calla palustris</i>	June 22.

TYPHACEÆ.

do	<i>Typha latifolia</i> , L.....	July 21.
----	---------------------------------	----------

NAIADACEÆ.

do	<i>Potamogeton pectinatus</i> , L.....	July 21.
	“ <i>hybridus</i> , Michx.....	do
22.	“ <i>perfoliatus</i> , L.....	do
	“ <i>compressus</i> , L.....	July 31.

ALISMACEÆ.

il 20.	<i>Sagittaria variabilis</i> , Engelm.....	July 14.
do	<i>Alisma plantago</i> , L., var <i>Americanum</i>	July 28.

ORCHIDACEÆ.

do	<i>Orchis spectabilis</i> , L.....	June 5.
il 20.	<i>Cypripedium pubescens</i> , Willd.....	June 15.
1.	<i>Platanthera hyperborea</i> , Lindley.....	June 22.
22.	“ <i>dilatata</i> , do	do
	<i>Cypripedium spectabile</i> , Swartz.....	do
il 20.	<i>Platanthera psycodes</i> , Gray.....	July 14.
il 20.	<i>Calopogon pulchellus</i> , R. Br.....	do

IRIDACEÆ.

do	<i>Iris versicolor</i> , L.....	June 15.
do	<i>Sisyrinchium Bermudiana</i> , L.....	June 22.

SMILACEÆ.

do	<i>Trillium erectum</i> , L.....	May 1.
	“ <i>grandiflorum</i> , Salisb.....	May 1!
	“ <i>erythrocarpum</i> , Michx.....	May 16.
il 20.	<i>Medeola Virginica</i> , L.....	June 15.
16.	<i>Smilax herbacea</i> , L.....	June 22.

LILIACEÆ.

<i>Erythronium Americanum</i> , Smith....	May 5.
<i>Polygonatum biflorum</i> , Ell.....	May 22.
<i>Smilacina bifolia</i> , Ker.....	do
“ <i>stellata</i> , Desf.....	do
“ <i>racemosa</i> , Desf.....	June 5.
<i>Clintonia borealis</i> , Raf.....	do
<i>Smilacina trifolia</i> , Desf.....	June 15.
<i>Lilium Philadelphicum</i> , L.....	July 14.

MELANTHIACEÆ.

<i>Uvularia grandiflora</i> , Smith.....	May 16.
“ <i>sessilifolia</i> , L.....	do
<i>Streptopus roseus</i> , Michx.....	do

JUNCACEÆ.

<i>Juncus effusus</i> , L.....	June 15.
“ <i>tenuis</i> , Willd.....	June 22.
“ <i>nodosus</i> , L.....	July 14.
“ <i>filiformis</i> , L.....	do
“ <i>bufonius</i> , L.....	do

PONTEDERIACEÆ.

<i>Pontederia cordata</i> , L.....	July 31.
------------------------------------	----------

CYPERACEÆ.

<i>Cyperus inflexus</i> , Muhl.....	July 31.
<i>Dulichium spathaceum</i> , Pers.....	July 28.
<i>Eleocharis palustris</i> , R. Brown.....	June 22.
“ <i>acicularis</i> , R. Br.....	do
<i>Scirpus lacustris</i> , R. Br.....	July 7.
“ <i>sylvaticus</i> , L.....	July 21.
<i>Eriophorum gracile</i> , Koch.....	June 22.
“ <i>polystachyon</i> , L.....	June 15.
“ <i>Virginicum</i> , L.....	July 28.
<i>Carex pedunculata</i> , Muhl.....	April 20.
“ <i>plantaginca</i> , Lam.....	do

CYPERACEÆ.—(Continued.)

<i>Carex eburnea</i> , Boott.....	April 20.
“ <i>Novæ-Angliæ</i> , Schw.....	May 16.
“ <i>polytrichoides</i> , Muhl.....	June 5.
“ <i>stipata</i> , Muhl	do
“ <i>tenella</i> , Schk.....	do
“ <i>stellulata</i> , Good.....	do
“ <i>canescens</i> , L.....	do
“ <i>striata</i> , Lam.....	do
“ <i>aurca</i> , Nutt.....	do
“ <i>teretiuscula</i> , Good.....	June 15.
“ <i>scoparia</i> , Schk	do
“ <i>lagopodioides</i> , Schk.....	do
“ <i>laxiflora</i> , Lam.....	do
“ <i>aretata</i> , Boott.....	do
“ <i>gracillima</i> , Schw.....	do
“ <i>Pseudo-Cyperus</i> , L	do
“ <i>intumescens</i> , Rudge.....	do
“ <i>festucacea</i> , Schk	June 22.
“ <i>crinita</i> , Lam.....	do
“ <i>retrorsa</i> , Schw.....	do
“ <i>squarrosa</i> , L.....	do
“ <i>cylindrica</i> , Schw.....	do
“ <i>hystericina</i> , Willd.....	July 7.
“ <i>vulpinoidea</i> , Michx.....	July 14.
“ <i>lupulina</i> , Muhl.....	do
“ <i>monile</i> , Tuckerman.....	do
“ <i>sychnocephala</i> , Carey.....	July 28.

GRAMINEÆ.

<i>Poa annua</i> , L	May 1.
“ <i>pratensis</i> , L.....	June 5.
“ <i>compressa</i> , L.....	July 7.
“ <i>scrotina</i> , Ehrhart.....	July 14.

GRAMINEÆ.—(*Continued.*)

<i>Oryzopsis asperifolia</i> , Michx.....	May 16.
<i>Alopecurus aristulatus</i> , Michx.....	June 15.
<i>Glyceria nervata</i> , Trin.....	June 22.
“ <i>fruitans</i> , R. Br.....	do
“ <i>aquatica</i> , Smith.....	July 7.
“ <i>Canadensis</i> , Trin.....	July 21.
<i>Agrostis alba</i> , L.....	July 7.
“ <i>scabra</i> , Willd.....	July 31.
<i>Phleum pratense</i> , L.....	July 14.
<i>Phalaris arundinacea</i> , L.....	do
“ <i>Canariensis</i> , L.....	July 21.
<i>Panicum dichotomum</i> , L.....	do
“ <i>crus-galli</i> , L.....	do
<i>Brachyelytrum aristatum</i> , Beauv.....	July 28.
<i>Bromus secalinus</i> , L.....	do
<i>Setaria glauca</i> , Beauv.....	do
<i>Spartina cynosuroides</i> , Willd.....	July 31.
<i>Sporobolus heterolepis</i> , Gray..	do

NOTE.—The following plants, not included in the foregoing list, were collected in the summer of 1867 in the same locality :

CRUCIFERÆ.

Cardamine pratensis, L.....May.

COMPOSITÆ.

Bidens cernua, L.....August.

ERICACEÆ.

Kalmia glauca, Ait.....June.

Moneses uniflora, Salisb.....August

Chimaphila umbellata, Nutt.....July.

AQUIFOLIACEÆ.

Ilex verticillata, Gray.....June.

ORCHIDACEÆ.

Platanthera Hookeri, Lindl.....do

