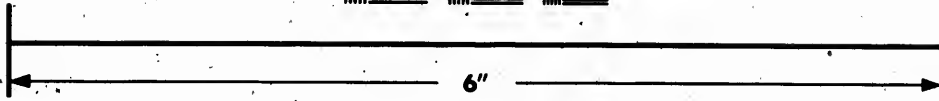
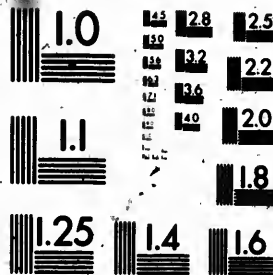
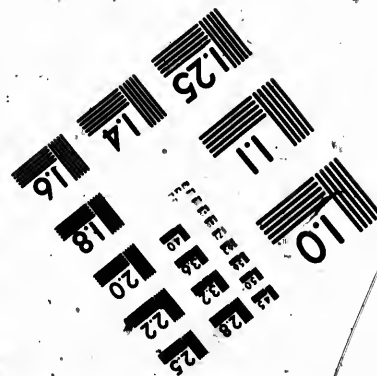
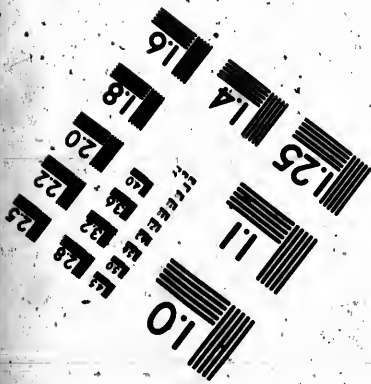


**IMAGE EVALUATION
TEST TARGET (MT-3)**



Canadian Institute



**Photographic
Sciences
Corporation**

23 WEST MAIN STREET
WEBSTER, N.Y. 14580
(716) 872-4503



**CIHM
Microfiche
Series
(Monographs)**

**ICMH
Collection de
microfiches
(monographies)**



Canadian Institute for Historical Microreproductions / Institut canadien de microreproductions historiques

© 1991

Technical and Bibliographic Notes / Notes techniques et bibliographiques

The Institute has attempted to obtain the best original copy available for filming. Features of this copy which may be bibliographically unique, which may alter any of the images in the reproduction, or which may significantly change the usual method of filming, are checked below.

L'Institut a microfilmé le meilleur exemplaire qu'il lui a été possible de se procurer. Les détails de cet exemplaire qui sont peut-être uniques du point de vue bibliographique, qui peuvent modifier une image reproduite, ou qui peuvent exiger une modification dans la méthode normale de filmage sont indiqués ci-dessous.

- Coloured covers/
Couverture de couleur
- Covers damaged/
Couverture endommagée
- Covers restored and/or laminated/
Couverture restaurée et/ou pelliculée
- Cover title missing/
Le titre de couverture manque
- Coloured maps/
Cartes géographiques en couleur
- Coloured ink (i.e. other than blue or black)/
Encre de couleur (i.e. autre que bleue ou noire)
- Coloured plates and/or illustrations/
Planches et/ou illustrations en couleur
- Bound with other material/
Rlié avec d'autres documents
- Tight binding may cause shadows or distortion along interior margin/
La reliure serrée peut causer de l'ombre ou de la distorsion le long de la marge intérieure
- Blank leaves added during restoration may appear within the text. Whenever possible, these have been omitted from filming/
Il se peut que certaines pages blanches ajoutées lors d'une restauration apparaissent dans le texte, mais, lorsque cela était possible, ces pages n'ont pas été filmées.

- Coloured pages/
Pages de couleur
- Pages damaged/
Pages endommagées
- Pages restored and/or laminated/
Pages restaurées et/ou pelliculées
- Pages discoloured, stained or foxed/
Pages décolorées, tachetées ou piquées
- Pages detached/
Pages détachées
- Showthrough/
Transparences
- Quality of print varies/
Qualité inégale de l'impression
- Continuous pagination/
Pagination continue
- Includes index(es)/
Comprend un (des) index

Title on header taken from: /
Le titre de l'en-tête provient:

- Title page of issue/
Page de titre de la livraison
- Caption of issue/
Titre de départ de la livraison
- Masthead/
Générique (périodiques) de la livraison

Additional comments: /
Commentaires supplémentaires:

This item is filmed at the reduction ratio checked below /
Ce document est filmé au taux de réduction indiqué ci-dessous:

10X	12X	14X	16X	18X	20X	22X	24X	26X	28X	30X	32X
<input type="checkbox"/>	<input type="checkbox"/>	<input type="checkbox"/>	<input type="checkbox"/>	<input type="checkbox"/>	<input type="checkbox"/>	<input type="checkbox"/>	<input type="checkbox"/>	<input checked="" type="checkbox"/>	<input type="checkbox"/>	<input type="checkbox"/>	<input type="checkbox"/>

The copy filmed here has been reproduced thanks to the generosity of:

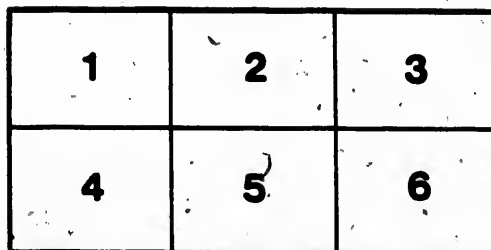
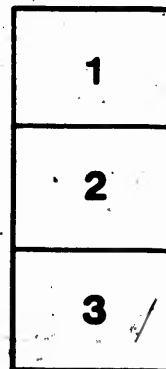
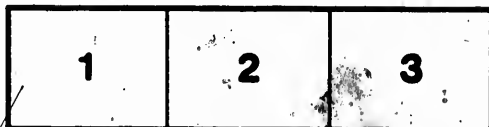
Library of the National
Archives of Canada

The images appearing here are the best quality possible considering the condition and legibility of the original copy and in keeping with the filming contract specifications.

Original copies in printed paper covers are filmed beginning with the front cover and ending on the last page with a printed or illustrated impression, or the back cover when appropriate. All other original copies are filmed beginning on the first page with a printed or illustrated impression, and ending on the last page with a printed or illustrated impression.

The last recorded frame on each microfiche shall contain the symbol \rightarrow (meaning "CONTINUED"), or the symbol ∇ (meaning "END"), whichever applies.

Maps, plates, charts, etc., may be filmed at different reduction ratios. Those too large to be entirely included in one exposure are filmed beginning in the upper left hand corner, left to right and top to bottom, as many frames as required. The following diagrams illustrate the method:



L'exemplaire filmé fut reproduit grâce à la générosité de:

La bibliothèque des Archives
nationales du Canada

Les images suivantes ont été reproduites avec le plus grand soin, compte tenu de la condition et de la netteté de l'exemplaire filmé, et en conformité avec les conditions du contrat de filmage.

Les exemplaires originaux dont la couverture en papier est imprimée sont filmés en commençant par le premier plat et en terminant soit par la dernière page qui comporte une empreinte d'impression ou d'illustration, soit par le second plat, selon le cas. Tous les autres exemplaires originaux sont filmés en commençant par la première page qui comporte une empreinte d'impression ou d'illustration et en terminant par la dernière page qui comporte une telle empreinte.

Un des symboles suivants apparaîtra sur la dernière image de chaque microfiche, selon le cas: le symbole \rightarrow signifie "A SUIVRE", le symbole ∇ signifie "FIN".

Les cartes, planches, tableaux, etc., peuvent être filmés à des taux de réduction différents. Lorsque le document est trop grand pour être reproduit en un seul cliché, il est filmé à partir de l'angle supérieur gauche, de gauche à droite, et de haut en bas, en prenant le nombre d'images nécessaire. Les diagrammes suivants illustrent la méthode.

Modern Building Fronts

...ESTABLISHED 1861...

Manufactured
from

GALVANIZED
STEEL.



No. 727. This design illustrates a 50-foot Front with Octagon Cut-off Corner, also showing treatment of Side.

MANUFACTURED ONLY

THE PEDLAR METAL ROOFING CO.

Head Office and Works

OSHAWA, ONT.

TO Architects, Contractors... AND The Building Public.

In this Catalogue we have submitted modern designs, in which we have embodied all practical improvements, with the special object in view of adding to the former commendable qualities of our House Fronts, at the same time reducing their cost considerably, and feel confident that a careful perusal of our Catalogue by Architects, Contractors, and Parties contemplating the construction or remodeling of buildings will be of invaluable service to them in perfecting and cheapening their designs, thereby combining durability and elegance of appearance with economy in price. Our Goods are distributed throughout the country, and if parties contemplating building desire to ascertain the special merits of our Fronts, they can write our customers in their vicinity (address of which we will furnish), from whom they can obtain the required information, and we are well-hand convinced that it will, in every instance, be highly commending our work. Our Fronts are especially designed to apply to old or new brick, stone, plastered or wooden buildings. **Shipped from our factory complete in every particular.**

TERMS: 30 Days. We are sometimes troubled with orders from those who are not engaged in mercantile affairs, or so recently commenced that they are not reported by the Commercial Agencies - R. O. Den A Co or The Bradstreet Co. While such buyers often prove to be most thoroughly responsible, yet our rule is, in executing orders from customers not favorably rated by the Commercial Agencies, or not furnishing satisfactory references, to make shipments to our own order, and to send Sight Draft with Bill of Lading attached thereto, through Bank or Express for collection. An itemized Invoice for all the goods, in such cases, is mailed direct to the consumer, together with a letter of advice, stating the total amount of our Draft, and the name of the Bank through which we have drawn. The Bill of Lading is full evidence of shipment of materials in good order, and we guarantee them to be first class and as represented in Invoice and Bill of Lading.

To make this method even more satisfactory, we authorize the Bank to hold our Draft until arrival of goods, when our customers request them to do so. We will be pleased to have our customers inform us, when ordering, to what Bank they prefer Draft sent for collection. Prices are for goods FOB Oshawa. We do not charge for boxes. Liberal discount to the trade. Prices are subject to change without further notice.

You should bear in mind that, in order to have satisfactory information in regard to these goods, you must give us satisfactory information as to your wants. Enable us to properly fill an order or to estimate on a Front, we must have accurate information and measures.

MANUFACTURED ONLY BY

The Pedlar Metal Roofing Co.

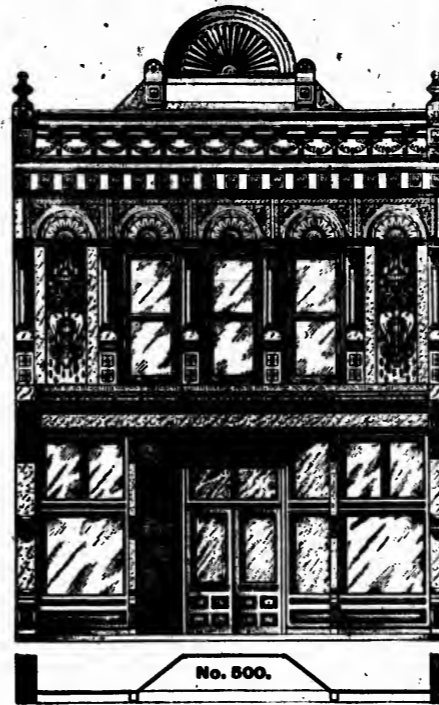
Head Office and Works, OSHAWA, ONT.

Printed at
Office of
The Pedlar Metal
Roofing Co.
Oshawa

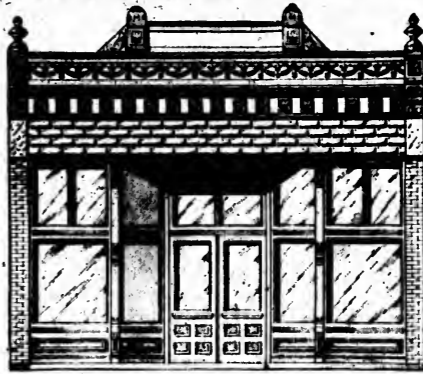
SEND FOR DISCOUNTS.

Galvanized Iron Fronts, as manufactured by us, are no longer an experiment; their reputation is firmly established.

Wherever they have been introduced, their merits are so prominent and manifold that they have taken prominent rank among Modern House Fronts, especially as their comparatively low price brings them within the reach of every one contemplating building.



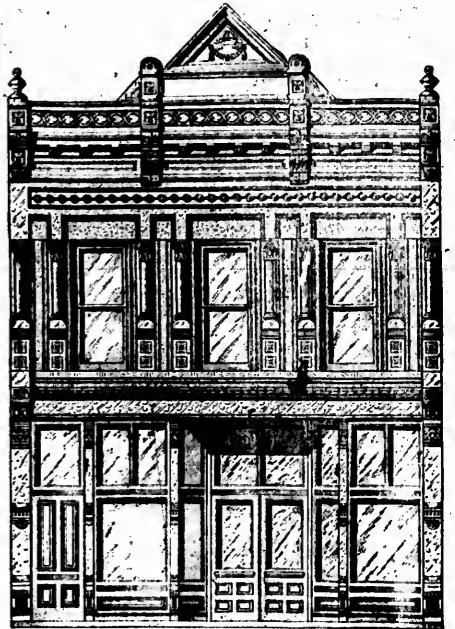
No. 500.
25 feet wide. Price, \$331.00.



No. 501.
20 feet wide. Price, \$161.00.
25 feet wide. Price, \$180.00.
30 feet wide. Price, \$205.00.



No. 502.
25 feet wide. Price, \$207.00.



No. 503.
25 feet wide. Price, \$347.00.

Above Fronts consist of the following articles: Cast Iron Sill Course; Steel Columns; all Show Sash, Transoms, Doors, Store Door Posts, Transom Bars, and Second Story Sash and Frames, of White Pine Lumber; all Glass of Double Strength; and Galvanized Iron Work above First Story Columns.

Parties desiring prices on Special Designs or Arrangements will please send us plans and specifications, which will be returned same day of receipt, by express.

All Fronts illustrated in this catalogue can be changed to suit any height or width of building.

Our Designs can be furnished at least 20 per cent. cheaper than Special Designs.

DIRECTIONS FOR ORDERING GALVANIZED IRON FRONTS.

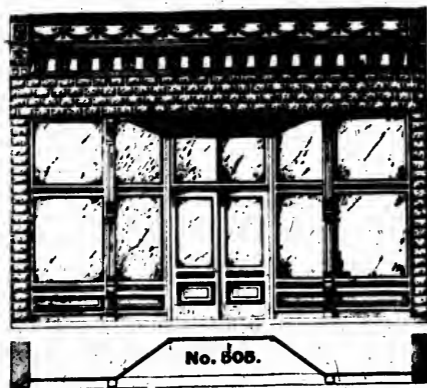
Send sketch of ground plan as shown below, giving as near as possible width and location of Columns, Doors and Show Windows; also distance between partitions, if any.

Give correct measurement of width of building from out to out; height of stories in the clear; also height between Ceiling and Roof; figure Joists in second floor, ceiling and roof, and prove these figures when added, with total height of building from Sill Course to Roof. If party walls are used show same.



25 feet wide. Price, \$321.00.

SEND FOR DISCOUNTS.



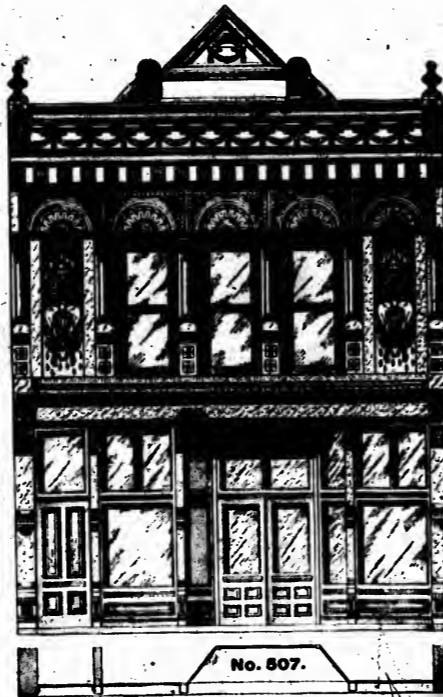
25 feet wide. Price, \$176.00.



20 feet wide. Price, \$195.00.
25 feet wide. Price, \$212.00.
30 feet wide. Price, \$237.00.

We contract to furnish Fronts complete, as shown in the several illustrations, excluding Hardware, Sash Weights and Cords, Inside Casings, Wood Backing and Wood Lintel, which material is provided by the owner or contractor of building.

Our Fronts are susceptible to a high class of artistic finish in imitation of cut stone by proper application of paint and sand.



25 feet wide. Price, \$342.00.

A FEW WORDS IN CONNECTION WITH OUR MILL WORK.

All of our Mill Work, without exception, is made from best selected white pine, kiln dried, and measures in finished state 1 3/4 in. thick. All Mouldings are worked solid on frames; Panels are all raised; Tenons well glued, and Second Story Sash pinned and glued; Show Sash, Store Doors and Transoms are fitted with loose beads for fastening in glass—proper play is allowed for glass. We claim, without fear of contradiction, to have the best designed and constructed Mill Work that can be used for store front purposes.

SEND FOR DISCOUNTS.

This sheet represents three of our original and handsome House Fronts, and gives a fair idea of their bold and artistic appearance; also shows how designs can be made to suit the varied requirements of number of stories, heights of stores, side entrance and without same, inter-change of round and taper columns, also number and arrangement of windows. Send sketch, state your requirements, and we will promptly submit drawings and net prices.

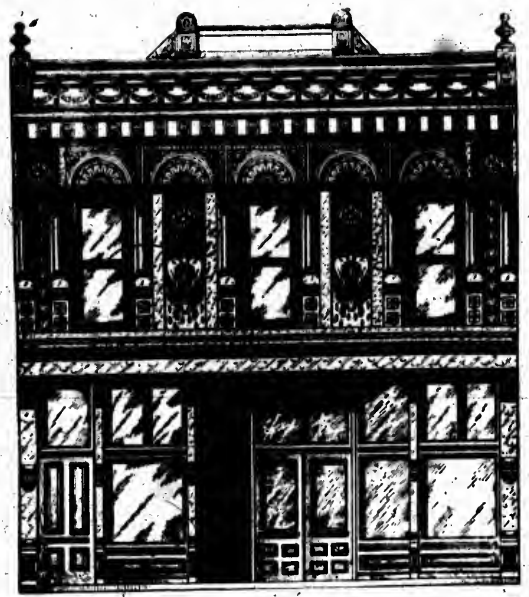


20 feet wide. Price, 302.00. 22 feet wide. Price, \$308.00.
25 feet wide. Price, \$325.00.

22 feet wide. Price, \$371.00.
25 feet wide. Price, \$390.00.

25 feet wide. Price, \$356.00.

Above Fronts consist of the following articles: Cast Iron Sill Course; Steel Columns; all Show Sash, Transoms, Doors, Store Door Doors, Transom Bars, and Second Story Sash and Frames, of White Pine Lumber; all Glass of Double Strength; and Galvanized Iron Work above First Story Columns.



No. 514.

30 feet wide, 2-story. Price, \$385.00.
 30 feet wide, 3-story. Price, \$461.00.

These Fronts consist of the following articles: Cast Iron Sill Course; Steel Columns; all Show Sash, Transoms, Doors, Store-Door Posts, Transom Bars, and Second Story Sash and Frames, of White Pine Lumber; all Glass of Double Strength; and Galvanized Iron above First Story Columns.



FIG. NO. 488.

The above cut is an exact reproduction of a photograph of one of our 8-foot sections of Ornamental Work, the picture being taken from an unpainted sheet of Galvanized Iron as it leaves the hands of our workman, and will give a good idea of the beauty and symmetrical forms of our ornamentation.



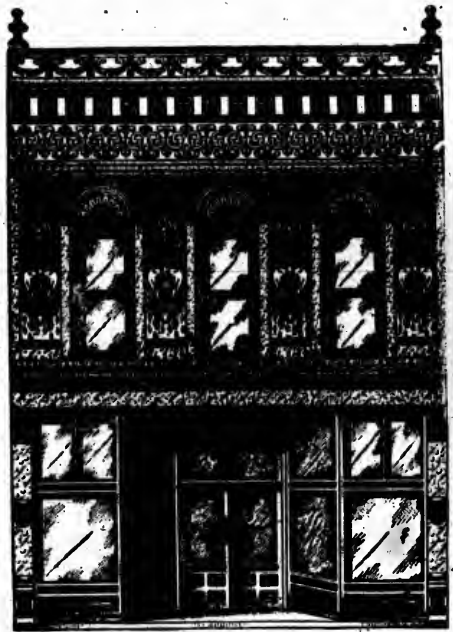
No. 515.

40 feet wide. Price, \$488.00. 44 feet wide. Price, \$507.00. 50 feet wide. Price, \$533.00.



PANEL NO. 485.

SEND FOR DISCOUNTS.



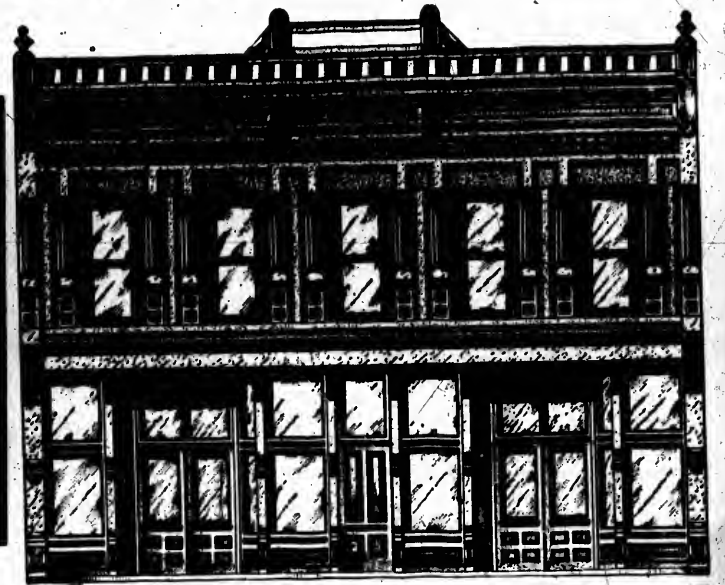
No. 516.

25 feet front. Price, \$269.00.

Above Fronts consist of the following articles: Cast Iron Sill Course; Steel Columns; all Show Sash, Transoms, Doors, Store-Door Posts, Transom Bars, and Second Story Sash and Frames, of White Pine Lumber; all Glass of Double Strength; and Galvanized Iron work above First Story Columns.



PANEL NO. 487.



No. 517.

40 feet wide. Price, \$545.00.
 44 feet wide. Price, \$566.00.

SEND FOR DISCOUNTS.



No. 710. \$1.50.



No. 711. 80c.



No. 712. 60c.

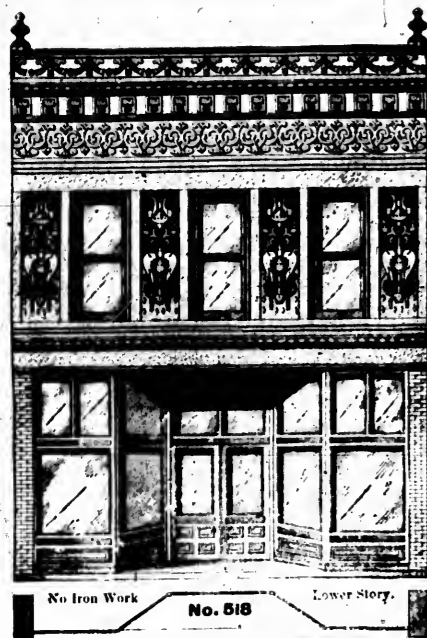


No. 713. 75c.



No. 714. \$1.20.

DESIGNS OF SOME OF OUR URNS.



No Iron Work No. 518 Lower Story.

22 feet wide. Price, \$194.00.
25 feet wide. Price, \$203.00.

We contract to furnish Fronts complete, as shown in the several illustrations, excluding Hardware, Sash Weights and Cords, Inside Casings, Wood Backing and Wood Lintel, which material is provided by the owner or Contractor of building.

Our Fronts are susceptible to a high class of artistic finish in imitation of cut stone by proper application of paint and sand.



No. 519.

50 feet wide, 2-story. Price, \$618.00.
50 feet wide, 3-story. Price, \$753.00.

WHEN MAKING ENQUIRIES, ASK FOR DISCOUNTS.

If you are a builder it will pay you to use our Fronts; you can save money for the owner and give satisfaction. If you erect one of our Fronts in your own or adjoining cities, you may depend others will follow. They are as easy to put up as a stud partition. We send full drawings and details with every Front. Can be used on frame or brick buildings, flat or pitch roofs.

Note—We manufacture and supply the entire Front complete, from sill to roof. Keeping as we do a heavy stock, we are able to furnish any Front of one to four stories high, and any length, at a very short notice.

ADVANTAGES OF OUR FRONTS.—Strong, bold and of artistic designs; simple and easy to erect, and no matter how cheap a building you wish to erect, you can have a Front that will do credit to any position you may erect same in your city.



No. 520.

40 feet wide. Price, \$480.00.
44 feet wide. Price, \$491.00.
50 feet wide. Price, \$528.00.



No. 521.

30 feet wide, 2-story. Price, \$363.00.
30 feet wide, 3-story. Price, \$450.00.

Above Fronts consist of the following articles: Cast Iron Sill Course; Steel Columns; all Show Sash, Transoms, Doors, Store Door Posts, Transom Bars, and Second Story Sash and Frames, of White Pine Lumber; all Glass of Double Strength; and Galvanized Iron Work above First Story Column.

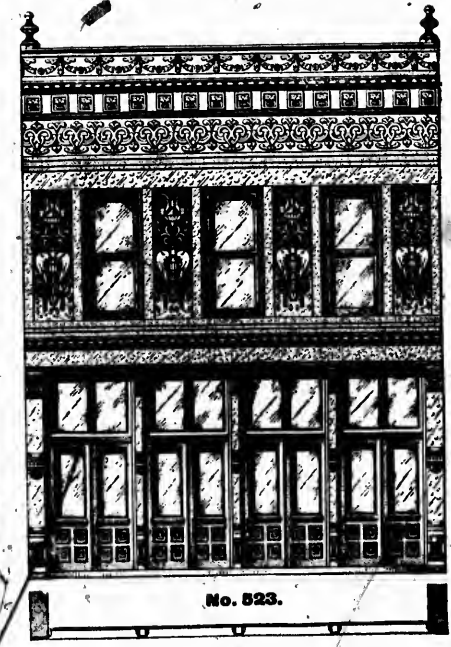


No. 522.

No Iron Work Lower Story.

50 feet wide, 3-story. Price, \$535.00.

50 feet wide, 2-story. Price, \$421.00.



No. 523.

25 feet wide. \$300.00.

The continued increase of our trade has compelled us to increase our capacity correspondingly. We have added largely to our buildings, occupying at present 75,000 square feet of floor space. Our works are provided with steam power of ample capacity throughout, and equipped with the most modern and powerful machinery for every portion of the work; not only have we adopted for the purpose the most serviceable inventions of modern times, but wherever these have fallen short to meet the requirements of our specialties, we have had, regardless of expense, machines constructed to effectually answer our purposes, and provided as we are with every possible labor-saving device suggested by ingenuity and the requirements of our trade, we are enabled to produce our work of quality and with promptness equalled by none. With increased facilities, a large and complete stock of all materials and ornaments pertaining to our productions and specialties on hand, we can safely enter upon the present season with the full assurance and promise to our customers, that their orders, however large, will be filled with the same accuracy and promptness for which we have established such firm reputation, and which to maintain shall as heretofore be our principal aim and consideration.



No. 524.

25 feet wide. Price, \$276.00.
30 feet wide. Price, \$310.00.

The detail and artificial finish accomplished in our Modern House Fronts is far superior to that obtainable in Cut Stone or Cast Iron, while in cost it is less than one-fifth of either, and as the durability of Galvanized Iron is unquestioned, the great merits of our Fronts as to expediency of construction, architectural beauty, economy and utility, are such recommendations as to entitle them to preference wherever brought into competition with any other Front.



No. 525.

60 feet wide, 3-story. Price, \$730.00.
60 feet wide, 2-story. Price, \$614.00.

SEND FOR DISCOUNTS.



75 feet wide, 2-story. Price, \$ 922.00.
 75 feet wide, 3-story. Price, \$1137.00.

60 feet wide, 2-story. Price, \$ 841.00.
 60 feet wide, 3-story. Price, \$1033.00.

The increased demand for our complete Modern House Fronts, and their general introduction throughout the country, fully demonstrates their true merits and commendable qualities. While others may try to produce imitations of our Modern House Fronts, none can approach us in point of architectural beauty, expediency and perfection of construction or durability; and as to price, our facilities for manufacturing, the low rates of freight due to our patent construction and close nesting in consequence, and the purchase of all materials pertaining to our complete House Fronts in large quantities and for cash, enable us to distance all competition. Our designs are all original; we adopt modern ideas as soon as presented and where practical. We personally supervise every distinct branch of our business, and devote our undivided attention to same. Every department is in charge of a competent superintendent, especially selected and fit for that particular branch. It is our aim to have our complete House Fronts introduced into every town and city in Canada, and to that effect solicit the correspondence of owners, contractors and builders, assuring them prompt attention and faithful and careful execution of any and all orders entrusted to our care.

SEND FOR DISCOUNTS.

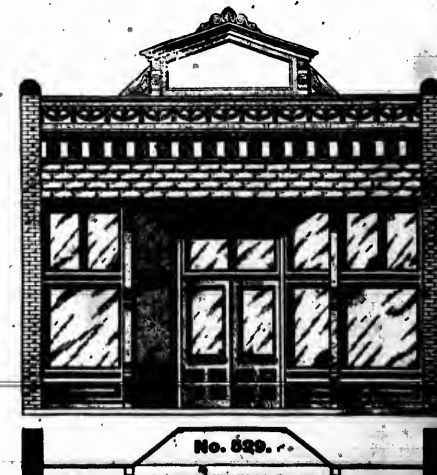


40 feet wide. Price, \$552.00.
 44 feet wide. Price, \$571.00.
 50 feet wide. Price, \$610.00.

Above Fronts consist of the following articles: Cast Iron Sill Course; Steel Columns; all Show Sash, Transoms, Doors, Store Door Posts, Transom Bars, and Second Story Sash and Frames, of White Pine Lumber; all Glass of Double Strength; and Galvanized Iron above First Story Columns.



20 feet wide. Price, \$234.00.
 22 feet wide. Price, \$243.00.
 25 feet wide. Price, \$263.00.



20 feet wide. Price, \$162.00.
 25 feet wide. Price, \$178.00.
 30 feet wide. Price, \$204.00.



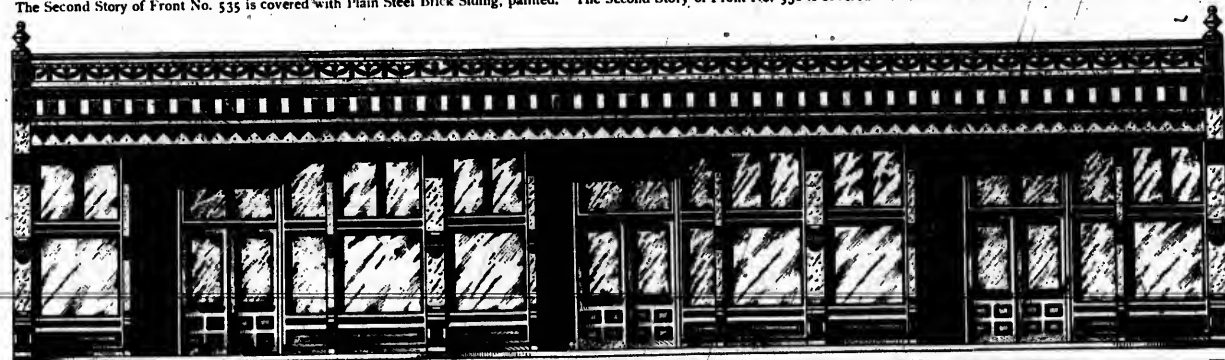
Corner Front. No Iron Work Lower Story. No Iron Work Lower Story. No Iron Work Lower Story. No Iron Work Lower Story.

No. 530. 25 feet front, with 7 feet return. Price, \$440.00.
 No. 531. 25 feet wide. Price, \$202.00.
 No. 532. 25 feet wide. Price, \$327.00.
 No. 533. 25 feet wide. Price, \$192.00.
 No. 534. 25 feet wide. Price, \$312.00.
 No. 535. 25 feet wide. Price, \$141.00.

The small cuts shown on upper parts of pages 14 and 15 represent a frontage of 300 feet covered with Fronts Nos. 530, 532, 534, 537, 539, 541 and 542 consist of the following articles: Cast Iron Sill Course; Steel Columns; all Show Sash, Transoms, Doors, Store Door Posts, Transom Bars, and Second Story Sash, and Frames, of White Pine Lumber; all Glass of Double Strength; and Galvanized Iron Work above First Story Columns.

Fronts Nos. 531, 533, 535, 538 and 540 consist of the following articles: All Show Sash, Transoms, Doors, Store Door Posts, Transom Bars, and Second Story Sash and Frames, of White Pine Lumber; all Glass of Double Strength; and Galvanized Iron Work above First Story Columns.

The Second Story of Front No. 535 is covered with Plain Steel Brick Siding, painted. The Second Story of Front No. 538 is covered with Rock Face Stone Siding, Galvanized Sheet Steel.



No. 536. 60 feet wide. Price, \$530.00.
 75 feet wide. Price, \$581.00.
 90 feet wide. Price, \$708.00.

Fronts marked "No Iron Work in Lower Story" have no First Story Columns or Cast Iron Sill Course figured in the prices quoted throughout this Catalogue.



No Iron Work Lower Story. No Iron Work Lower Story. Corner Front.

No. 537. 25 feet wide. Price, \$353.00.
 No. 538. 25 feet wide. Price, \$155.00.
 No. 539. 25 feet front. Price, \$320.00.
 No. 540. 25 feet wide. Price, \$191.00.
 No. 541. 25 feet wide. Price, \$305.00.
 No. 542. 25 feet front, with 7 feet return. Price, \$441.00.

12 of our Fronts, each 25 feet wide, and will give a fair idea to intending customers on which to base their selection. Transom Bars, and Second Story Sash, and Frames, of White Pine Lumber; all Glass of Double Strength; and Galvanized Iron Work above First Story Columns.



No. 543. 44 feet wide. Price, \$375.00.
 40 feet wide. Price, \$360.00.
 50 feet wide. Price, \$394.00.

Fronts marked "No Iron Work in Lower Story" have no First Story Columns or Cast Iron Sill Course figured in the prices quoted throughout this Catalogue.



No. 544. 30 feet wide. Price, \$194.00.
 25 feet wide. Price, \$212.00.
 30 feet wide. Price, \$239.00.



No. 545.

100 feet wide. Price, \$766.00.

SEND FOR DISCOUNTS.

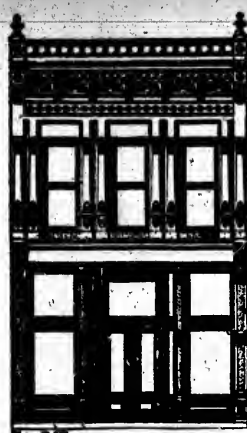


No. 546.

100 feet wide. Price, \$933.00.

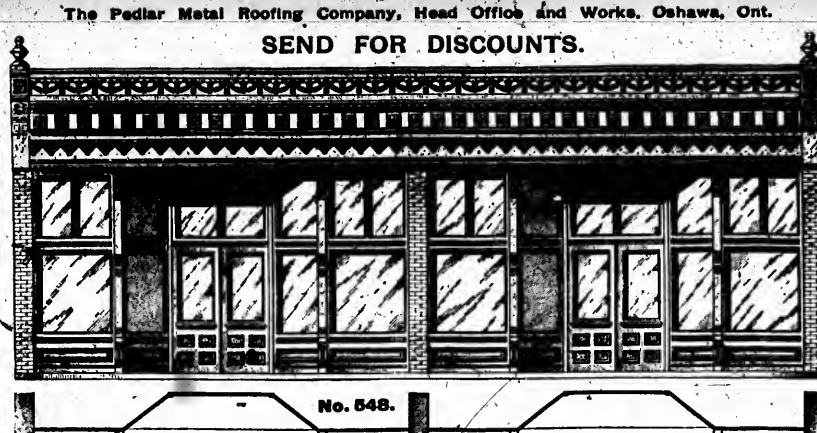
Above Fronts consist of the following articles: Cast Iron Sill Course; Steel Columns; all Show Sash, Transoms, Doors, Store Door Posts, Transom Bars, and Second Story Sash and Frames, of White Pine Lumber; all Glass of Double Strength; and Galvanized Iron Work above First Story Columns.

SEND FOR DISCOUNTS.



No. 547.

22 feet wide. Price, \$299.00.

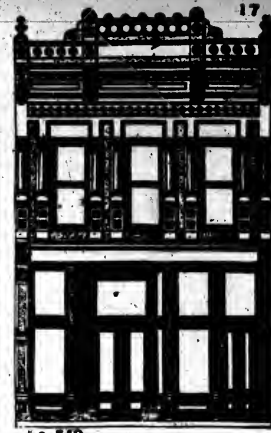


No. 548.

40 feet wide. Price, 316.00.

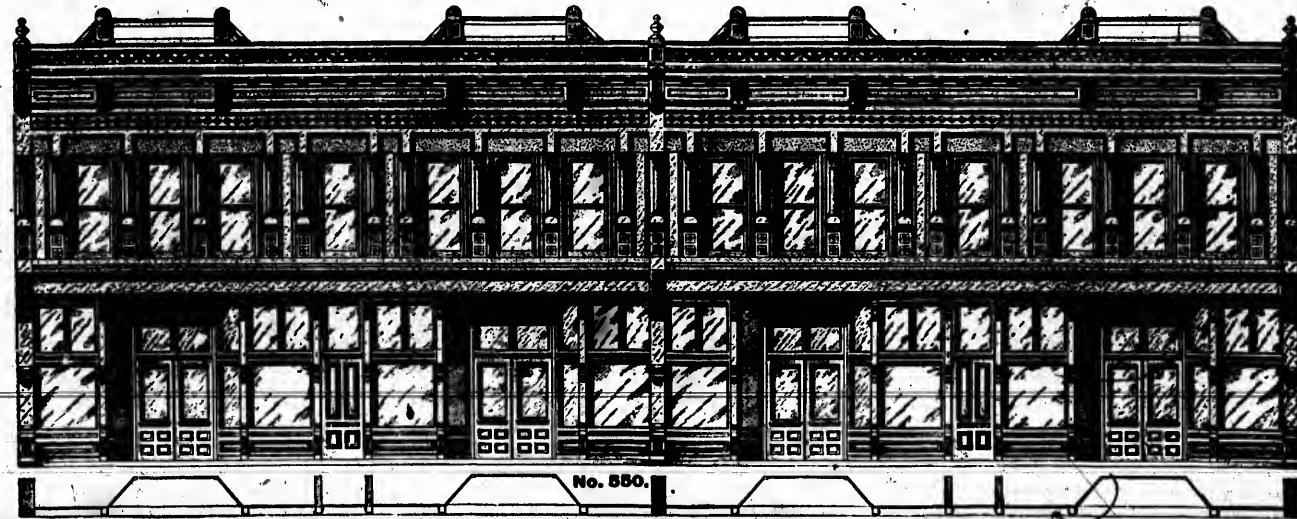
44 feet wide. Price, \$330.00.

50 feet wide. Price, \$350.00.



No. 549.

24 feet wide. Price, \$340.00.



No. 550.

100 feet wide. Price, \$1201.00.



No Iron Work Lower Story. No. 551. 20 feet wide. Price, \$188.00. 25 feet wide. Price, \$202.00. 30 feet wide. Price, \$212.00.



No. 552. No Iron Work Lower Story. 20 feet wide. Price, \$136.00. 25 feet wide. Price, \$149.00. 30 feet wide. Price, \$173.00.

This page represents Three Fronts, the buildings of which are Frame.

Having had so many enquiries in the past, asking us if our Fronts can be used on a frame building, we have in this issue of our Catalogue devoted a special page illustrating same; and at the same time state that ALL of our Fronts are applicable to any building (either new or old), of any material or any construction, with flat, low or high-pitched roof, any width or height. In many cases customers prefer, in corner Fronts as shown on page 1, to have lower story on sides brick and upper stories frame, with our Galvanized Iron Finish. This makes a fine building; in fact makes side look equal to front at a less cost than common brick work. For old frame buildings, the outsides of which are in a dilapidated state while the inside is in a fair condition, the substitution of one of our Fronts, and covering the sides with galvanized sheet steel, rock face stone or brick siding, will make a building of handsome appearance at a very small cost. Send us sketch of your old or new building, with your selection of any design shown in this Catalogue; we will at once submit drawing, free of cost, with net prices and items of work estimated on.

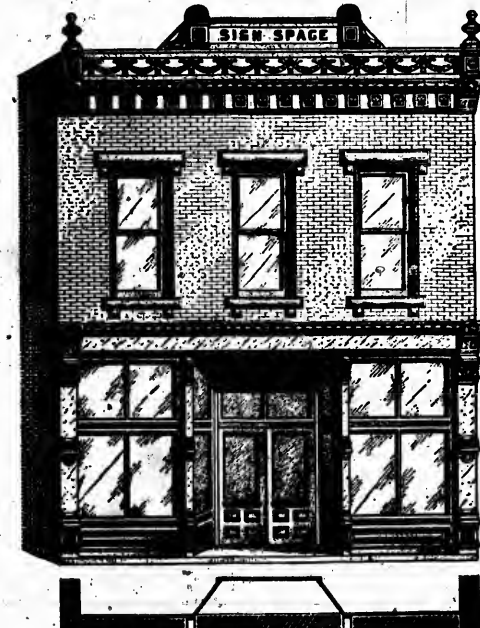


No Iron Work Lower Story. No. 553. 22 feet wide. Price, \$205.00. 25 feet wide. Price, \$210.00. 30 feet wide. Price, \$249.00.

NOTE. We make a large variety of Siding and Roofings that are not shown in this Catalogue, which are designed for use on a cheaper class of building. Prices and illustrations of which we will gladly send you.

Get our ROOFING and CEILING CATALOGUE... Yours for the asking.

Our patent steel columns for brick buildings, as illustrated below, are of handsome design, constructed of best plate steel, and have been practically and thoroughly tested as to strength. Their construction and material is sufficient guarantee against breakage or damage in transportation, and their weight fit comparison with cast iron columns. Freight more than one-half. Our columns are manufactured 6 in., 8 in., 10 in., 12 in. and 16 in. diam. We manufacture both box and angle columns. The ornamental columns are of modern design, made of best gray iron castings, highly finished, completely and accurately fitted to the columns before shipment, and so constructed as to be put on when building is finished. All 6 in. intermediate columns are provided with 2 in. wood backing for the securing of inside Sills. We keep a large stock of columns on hand and can fill orders promptly.



- BRICK FRONT WITH PATENT STEEL COLUMNS AND GALVANIZED IRON TRIMMINGS. No. 512. Mill Cornice, 14 inches wide, 4 inch Rise. Price, per ft., \$ 1.50-8 in. wide, 60c. No. 513. Metal Sill, 12 inch wide, 12 inch high, 12 inch long. Price, per ft., 1.00. No. 514. Two 12 inch Angle Steel Columns, 12 ft. long, 12 inch deep. Price, each, 20.00-8 in. deep, 18c. No. 515. Two 6 inch Box Steel Columns, 12 ft. long, 12 inch deep. Price, each, 20.00-8 in. deep, 18c. No. 516. Lintel Cornice, 20 inches high, complete, with cover. Price, per ft., .20. No. 517. Window Caps, galvanized iron. Price, each, .10. No. 518. Window Sills, galvanized iron. Price, per ft., .10. No. 519. Main Cornice, 24 inches high. Price, per ft., .60. No. 520. Balustrade Course, 24 inches high. Price, per ft., .60. No. 521. Pediment. Price, per ft., .60.

For brick fronts we are prepared to furnish the iron mill cornice, our steel columns, metal window caps and sills, lintel and main cornice, with pediment and urns. Our cornices are shipped in 8 feet sections, closely packed, lashed down and reeved, and fully crated with woodwork to avoid damage or breakage in transportation.

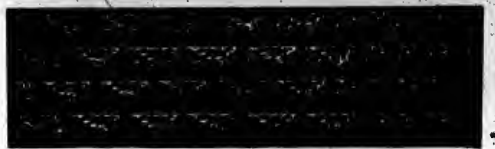
STEEL COLUMNS FOR BRICK BUILDINGS.

- No. 522. 6 in. Angle Column, 12 in. deep; 12 ft. high. Price each, 12.00. No. 523. 8 in. Angle Column, 12 in. deep; 12 ft. high. Price each, 18.00. No. 524. 10 in. Angle Column, 12 in. deep; 12 ft. high. Price each, 24.00. No. 525. 12 in. Angle Column, 12 in. deep; 12 ft. high. Price each, 30.00. No. 526. 14 in. Angle Column, 12 in. deep; 12 ft. high. Price each, 36.00. No. 527. 16 in. Angle Column, 12 in. deep; 12 ft. high. Price each, 42.00. No. 528. 6 in. Box Column, 9 in. deep; 12 ft. high. Price each, 12.00. No. 529. 8 in. Box Column, 9 in. deep; 12 ft. high. Price each, 18.00. No. 530. 10 in. Box Column, 9 in. deep; 12 ft. high. Price each, 24.00. No. 531. 12 in. Box Column, 9 in. deep; 12 ft. high. Price each, 30.00. No. 532. 14 in. Box Column, 9 in. deep; 12 ft. high. Price each, 36.00. No. 533. 16 in. Box Column, 9 in. deep; 12 ft. high. Price each, 42.00.



Perspective Views of Nos. 626 and 627.

- No. 534. 12 in. Angle Column, 12 in. deep; 12 ft. high. Price each, 30.00. No. 535. 14 in. Angle Column, 12 in. deep; 12 ft. high. Price each, 36.00. No. 536. 16 in. Angle Column, 12 in. deep; 12 ft. high. Price each, 42.00. No. 537. 18 in. Angle Column, 12 in. deep; 12 ft. high. Price each, 48.00. No. 538. 20 in. Angle Column, 12 in. deep; 12 ft. high. Price each, 54.00.



No. 539. Rock Face Stone Siding. Sheets 24x36 inches. Galvanized Sheet Steel, or Black Iron painted. Write for price per square. State amount required.



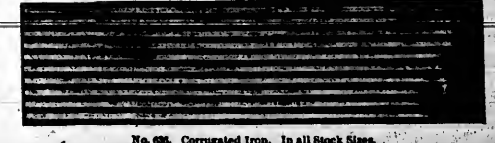
No. 540. Rock Face Diaper Work. Sheets 24x36 inches. Galvanized Sheet Steel, or Black Iron painted. Write for price per square. State amount required.



No. 541. Rock Face Steel Brick Siding. Sheets 24x36 inches. Galvanized Sheet Steel, or Black Iron painted. Write for price per square. State amount required.

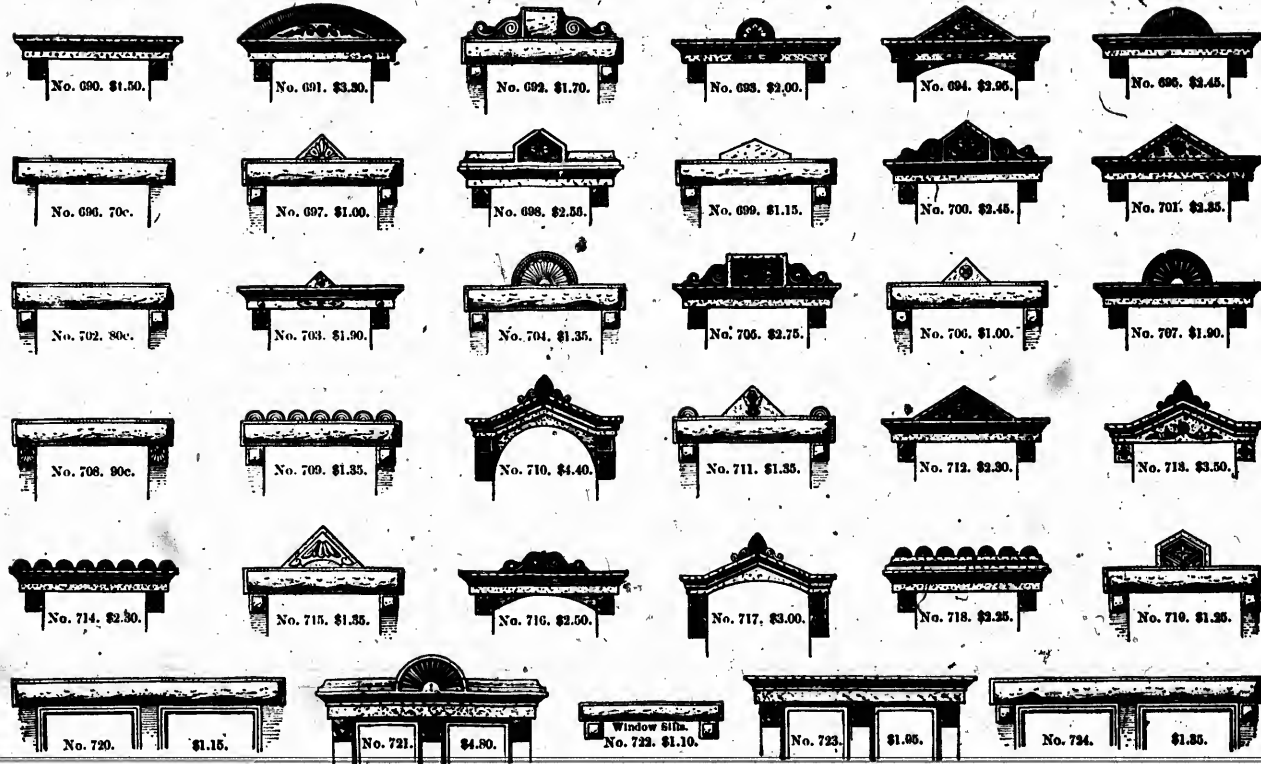


No. 542. Plain Steel Brick Siding. Sheets 24x36 inches. Galvanized Sheet Steel, or Black Iron painted. Write for price per square. State amount required.



No. 543. Corrugated Iron. In all Stock Sizes. Write for price per square. State amount required.

SEND FOR DISCOUNTS.



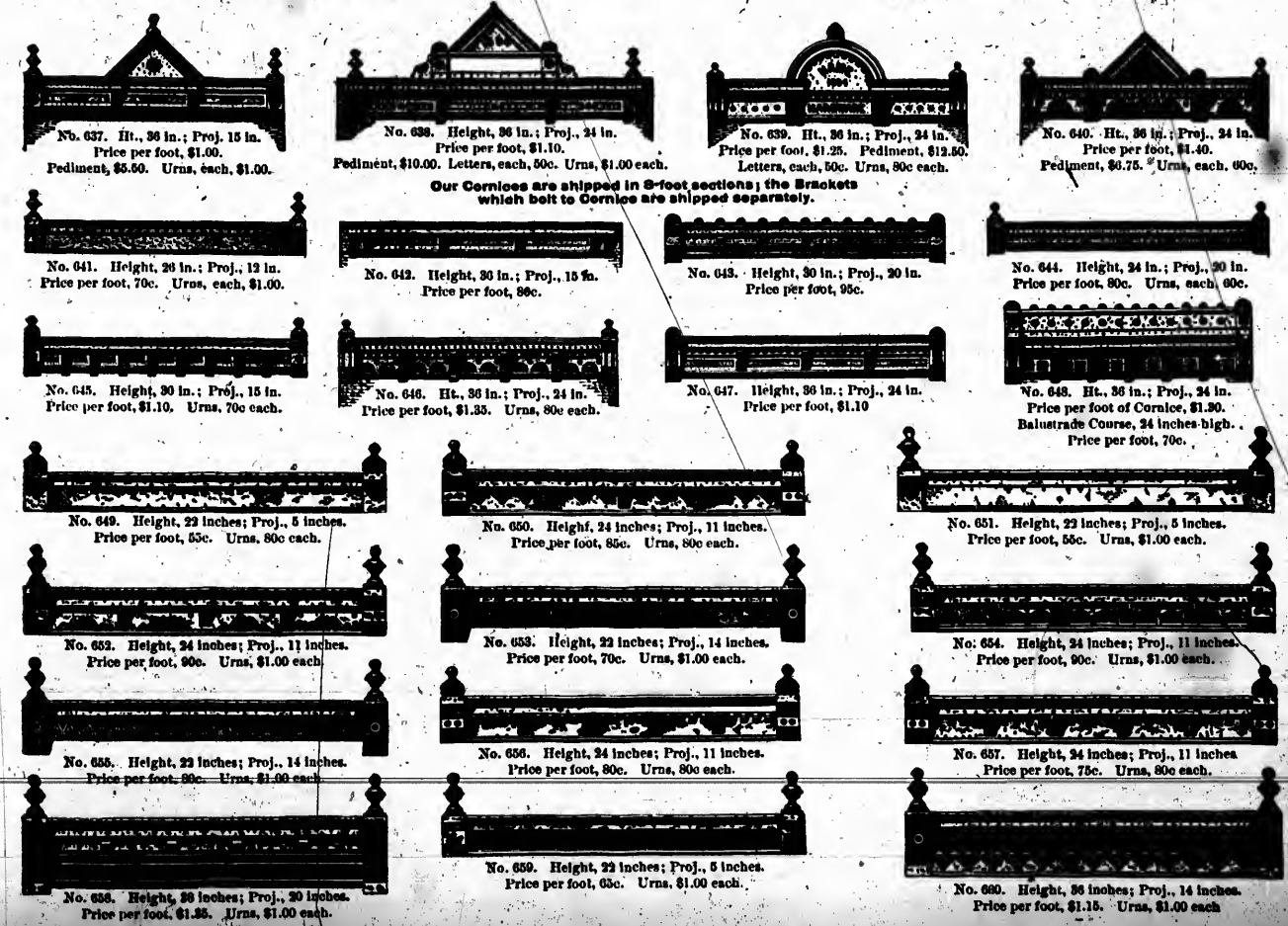
The above prices for window and door caps are for openings from 30 to 40 inches in width between brick work. Other sizes will be charged extra. The square head window and door caps illustrated above can be changed to segment head caps at an expense of 75 cents additional each.

DIRECTIONS FOR ORDERING WINDOW AND DOOR CAPS.

Orders should specify if caps are wanted for square, segment or circular head openings. For segment or circular head openings give radius. Always state width of opening between brick work in inches, and give the distance that the frame is recessed from face of wall. State if caps are to be built in brick work, or put on building already erected, as a difference in construction of cap is necessary.

SEND FOR DISCOUNTS.

SEND FOR DISCOUNTS.



Our Cornices are shipped in 8-foot sections; the Brackets which bolt to Cornice are shipped separately.

SEND FOR DISCOUNTS.



No. 661. Height, 43 inches; Proj., 22 inches. Price per foot, \$1.30. Urns, \$1.00 each.



No. 662. Height, 36 inches; Proj., 24 inches. Price per foot, \$1.26. Pediment, \$6.00. Urns, 80c each. Letters, 50c each.



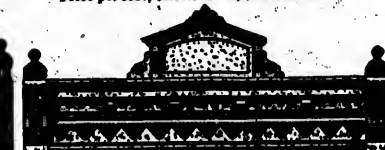
No. 663. Height, 43 inches; Proj., 23 inches. Price per foot, \$1.25. Urns, \$1.00 each.



No. 664. Height, 42 inches; Proj., 15 inches. Price per foot, \$1.35. Urns, 80c each. Pediment, \$6.75.



No. 665. Height, 42 inches; Proj., 36 inches. Price per foot, \$1.45. Urns, 80c each.



No. 666. Height, 43 inches; Proj., 20 inches. Price per foot, \$1.30. Urns, 80c each. Pediment, \$6.00. Letters, 50c each.



No. 667. Height, 30 inches; Proj., 11 inches. Price per foot, 85c. Urns, 80c each. Pediment, \$6.60. Letters, 50c each.



No. 668. Height, 36 inches; Proj., 24 inches. Price per foot, \$1.30. Urns, 80c each.



No. 669. Height, 42 inches; Proj., 15 inches. Price per foot, \$1.45. Urns, 80c each.



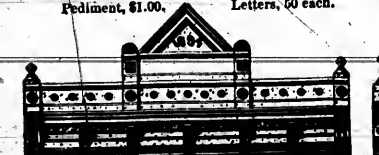
No. 670. Height, 42 inches; Proj., 15 inches. Price per foot, \$1.25. Urns, \$1.00 each. Pediment, \$1.00. Letters, 50c each.



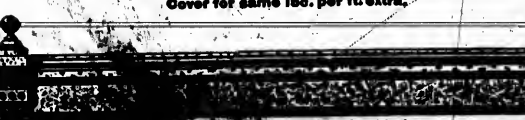
No. 671. Height, 26 inches; Proj., 12 inches. Price per foot, 70c. Urns, 60c each.



No. 672. Height, 30 inches; Proj., 15 inches. Price per foot, \$1.20. Urns, 80c each. Pediment, \$13.00.



No. 673. Height, 43 in.; Proj., 24 in. Price per foot, \$1.30. Urns, 60c each. Balustrade, 10c per foot. Pediment, \$6.00. Letters, 50c each.



No. 674. Height, 36 inches; Proj., 13 inches. Price per foot, 85c. Urns, 80c each. This cornice can be used for Lintel Cornices; Cover for same 15c. per ft. extra.



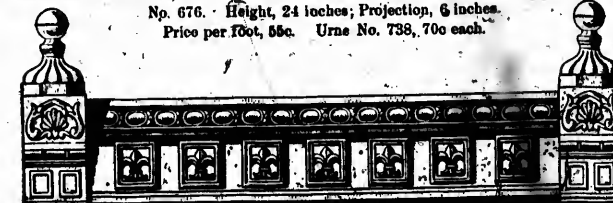
No. 675. Height, 30 in.; Proj., 15 in. Price per foot, 85c. Urns, \$1.00 each. Balustrade, 70c per foot. Pediment, \$13.00. Letters, 50c each.

SEND FOR DISCOUNTS.

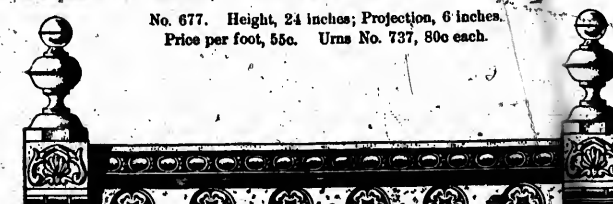
8-FOOT SECTIONS OF SIX OF OUR CHEAP CORNICES. Reduced to Half-Inch Scale.



No. 676. Height, 24 inches; Projection, 6 inches. Price per foot, 55c. Urns No. 738, 70c each.



No. 677. Height, 24 inches; Projection, 6 inches. Price per foot, 55c. Urns No. 737, 80c each.



No. 678. Height, 24 inches; Projection, 6 inches. Price per foot, 55c. Urns No. 736, \$1.00 each.

The above Cornices can be made any projection up to 12 inches, with slight decrease in height. If used for Lintel Cornices the height will be 30 inches, price 55c per foot, including Cover.

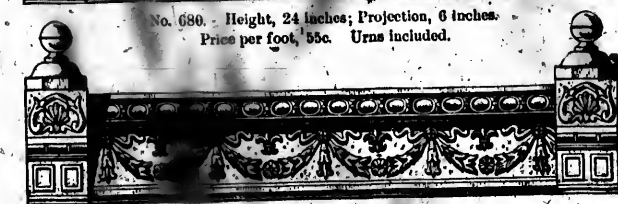


No. 679. Height, 28 inches; Projection, 12 inches. Price per foot, 95c. Urns, 80c each.

SEND FOR DISCOUNTS.

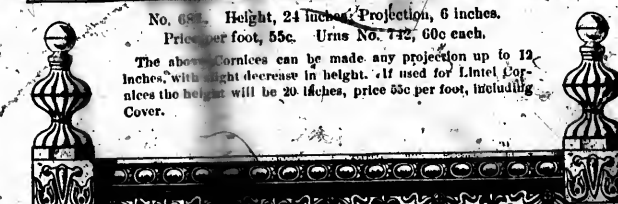


No. 680. Height, 24 inches; Projection, 6 inches. Price per foot, 55c. Urns included.



No. 681. Height, 24 inches; Projection, 6 inches. Price per foot, 55c. Urns No. 732, 60c each.

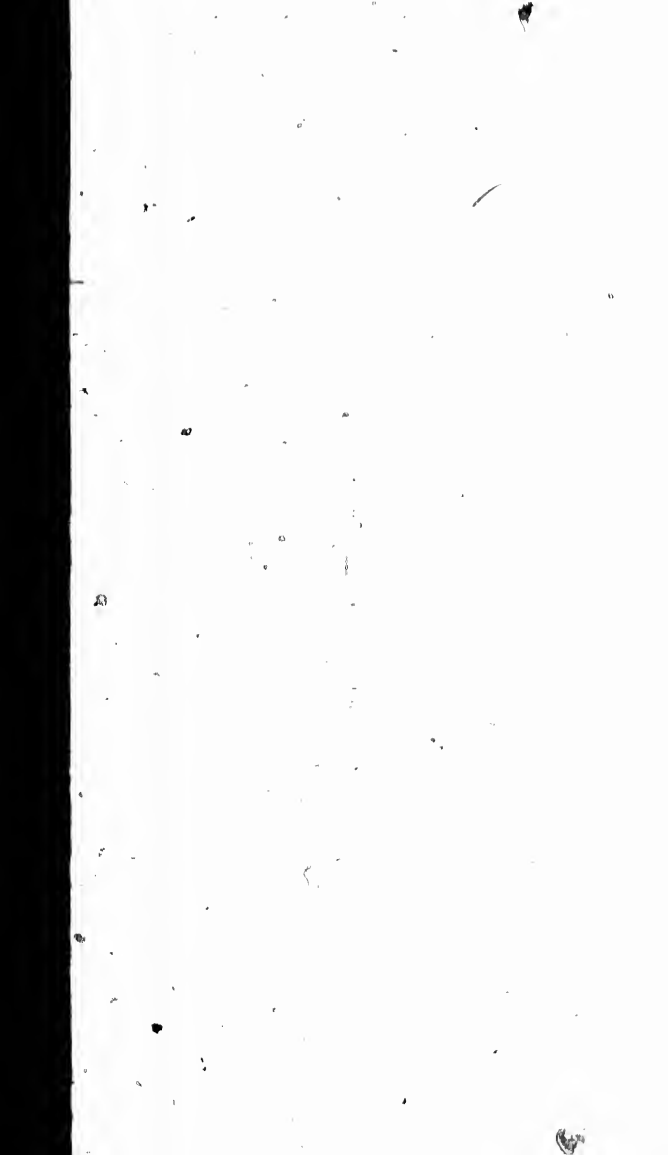
The above Cornices can be made any projection up to 12 inches, with slight decrease in height. If used for Lintel Cornices the height will be 30 inches, price 55c per foot, including Cover.



No. 682. Height, 42 inches; Projection, 15 inches. Price per foot, \$1.65. Urns No. 739, \$1.40 each.



No. 683. Height, 36 inches; Projection, 24 inches. Price per foot, \$1.10. Urns, \$1.00 each.

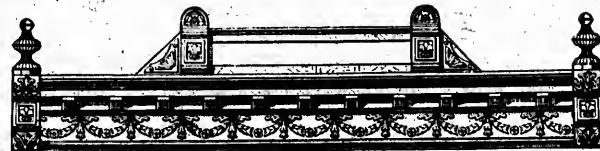


SEND FOR DISCOUNTS.

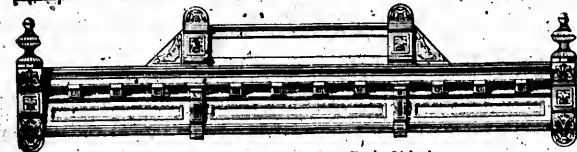
No. 684. Height, 42 inches. Proj., 24 inches. Price per foot, \$1.35.



Pediment, \$9.00. Urns, each, \$1.00. Letters, 50c each.



No. 685. Height, 36 inches; Proj., 24 inches. Price per foot, \$1.15. Urns, \$1.00 each. Pediment, \$8.10. Letters, 50c each.



No. 686. Height, 36 inches; Proj., 24 inches. Price per foot, \$1.15. Urns, \$1.00 each. Pediment, \$8.10.



No. 687. Height, 36 inches; Proj., 24 inches. Price per foot, \$1.20. Urns, 60c. Pediment, \$8.60. Letters, 50c each.

SEND FOR DISCOUNTS.



No. 688. Height, 42 inches; Proj., 26 inches. Price per foot, \$1.35. Urns, \$1.00 each.

Our Cornices are shipped in 8-foot sections; the brackets which bolt to Cornice are shipped separately.

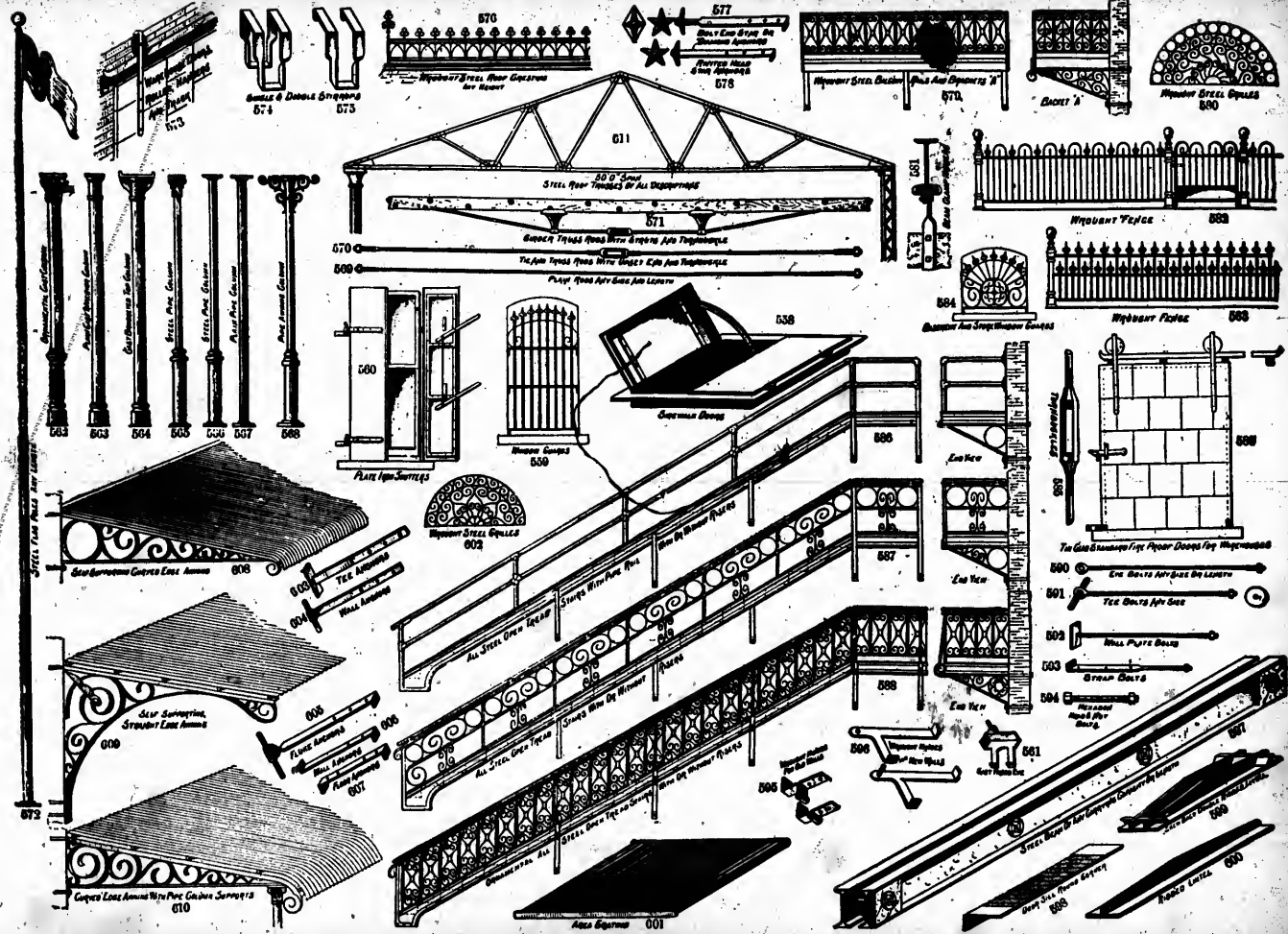


No. 689. Height, 36 inches; Proj., 24 inches. Price per foot, \$1.25. Urns, 80c each.

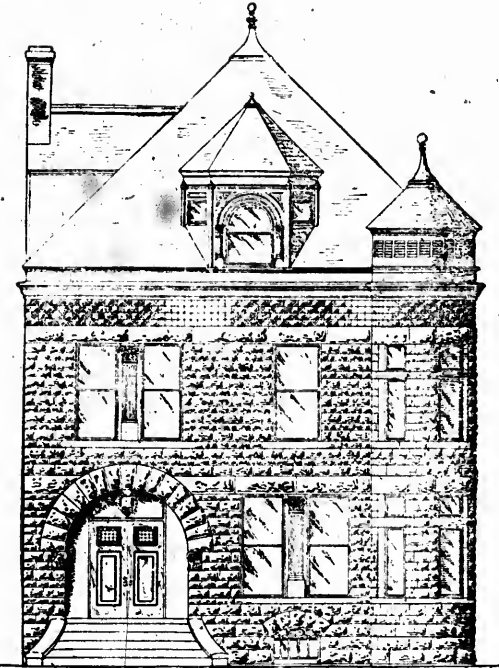
DIRECTIONS FOR ORDERING.

In ordering Cornices, always give total length from out to out. Cornices have no covering on top, they are to be covered with same material as roof. We furnish covering for Lintel Cornices, when ordered, at 15 cents per foot extra.

Our Cornices are thoroughly fire-proof. The brackets and modillions are bolted to the Cornice, and the mouldings are run through solid. Our Cornices are fully complete, including wood lockouts for joints every eight feet apart, and are so constructed that they can be put up by any mechanic without difficulty. The cost of putting up our Cornices, owing to their simple construction, is a mere trifle.



570 571 572 573 574 575 576 577 578 579 580 581 582 583 584 585 586 587 588 589 590 591 592 593 594 595 596 597 598 599 600 601 602 603 604 605 606 607 608 609 610



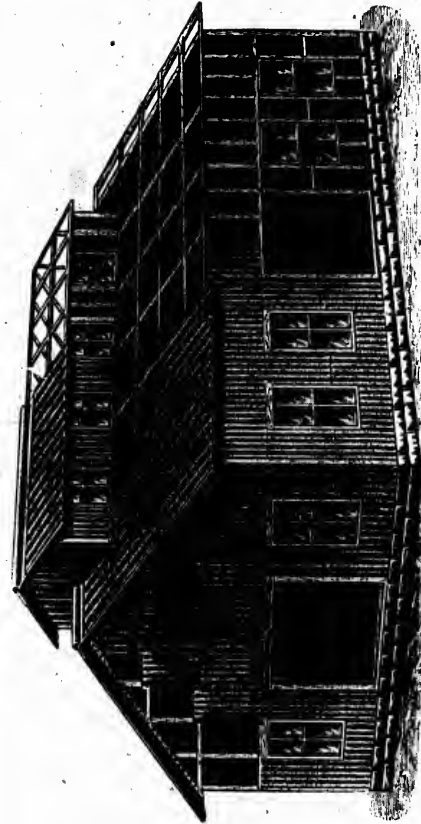
NO. 494.

Cut shows Modern House covered with our Rock Faced Siding Plates.



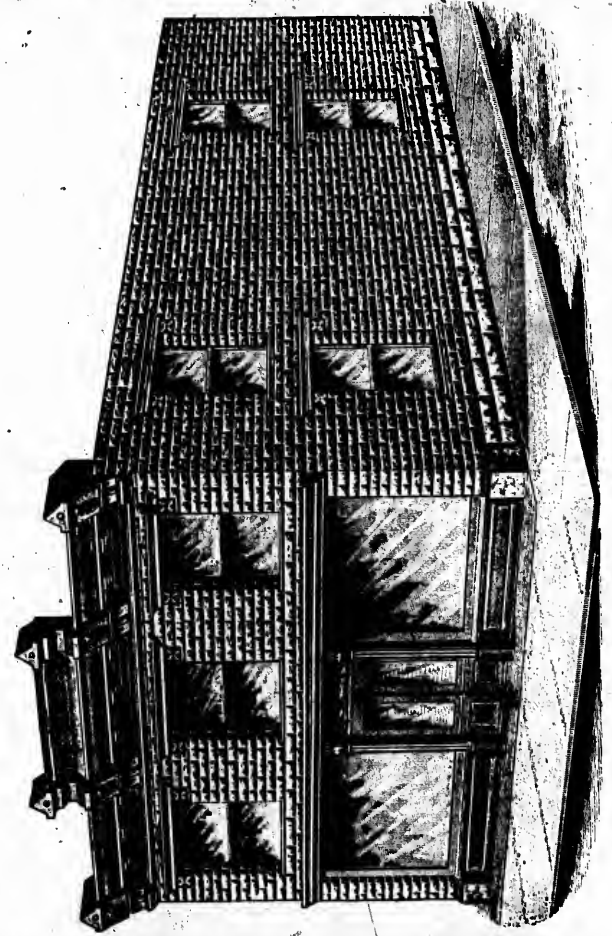
NO. 493.

Cut shows manner of applying our Siding Plates to Brick, Stone, or Plastered Walls.



NO. 498.

Cut shows Fire-proof Store House, Frame construction covered with Corrugated Iron. Estimates given on receipt of size of building required.



NO. 495.

Cut shows Fire-proof Store. Estimates given on receipt of size of building required.

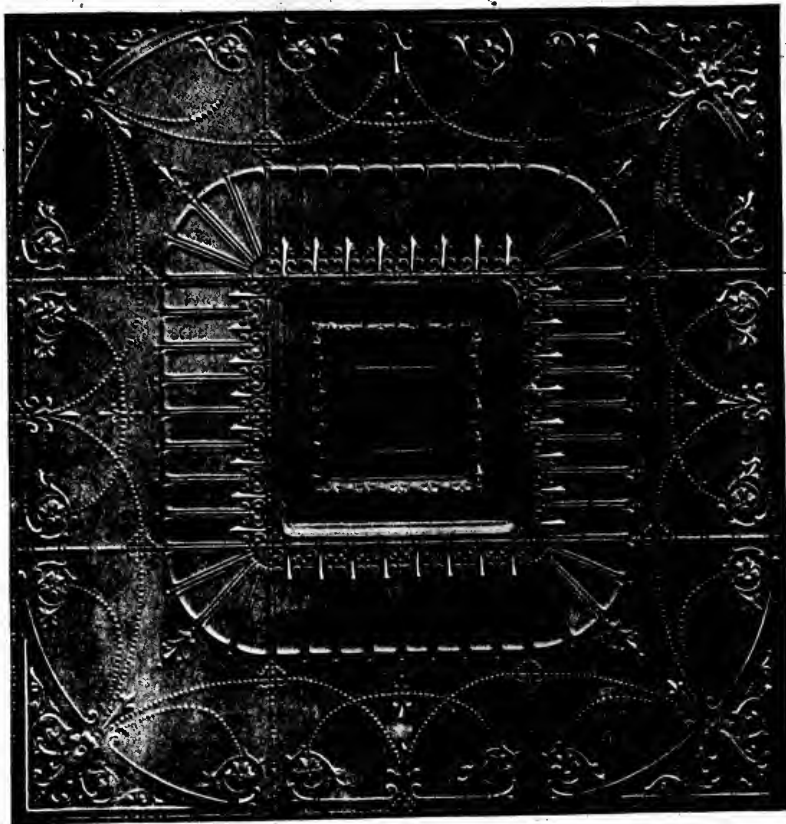
Get our Ceiling Catalogue, illustrating our Art Metal Interior Decorations. It is a Work of Art.

Embossed

SHEET

STEEL

CEILINGS



PANEL NO. 10. 72 x 72 INCHES.



We make a very complete line of these goods, which are suitable for use in theatres, halls, churches, hotels, stores, private houses, etc.

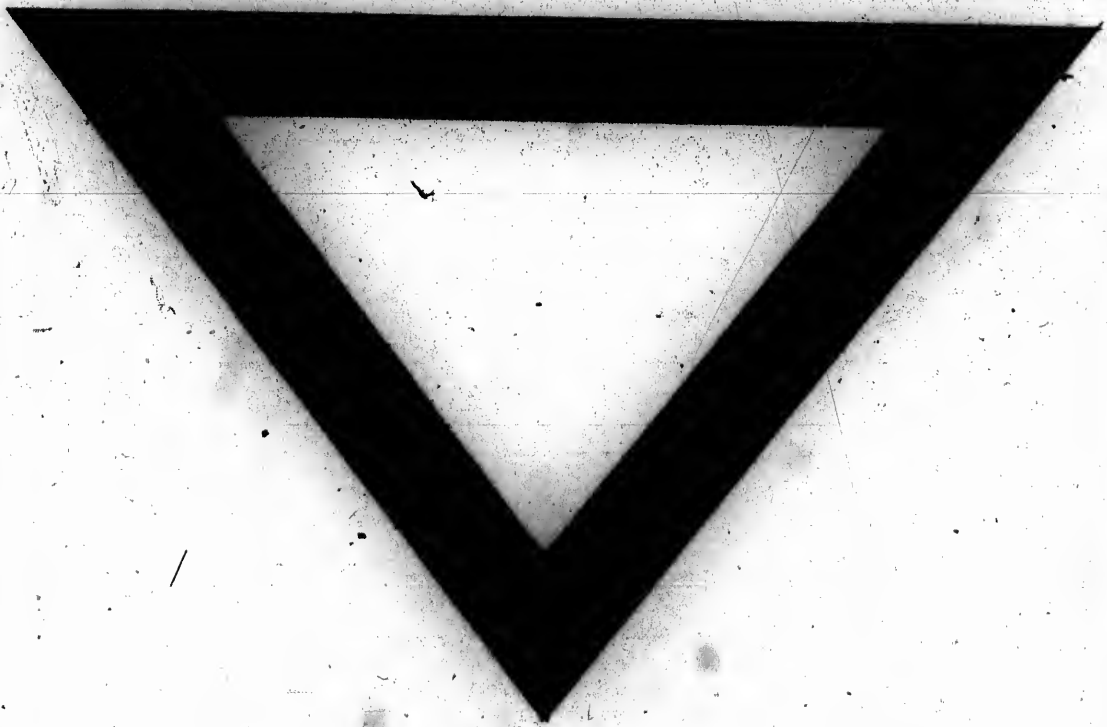
Get our Ceiling Catalogue. It is a work of Art.....

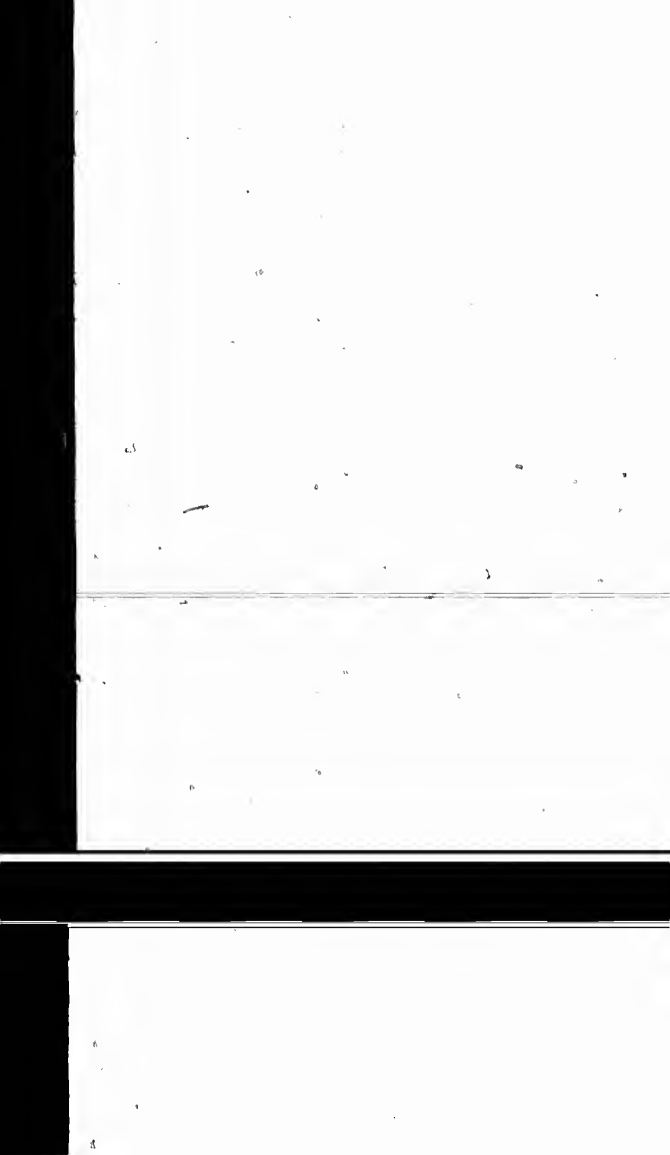


The Pedlar Metal Roofing Co.

Head Office and Works,

Oshawa, Ont.







Faint, illegible text on the top page of the document.

Faint, illegible text on the middle page of the document.



Faint, illegible text on the bottom page of the document.

