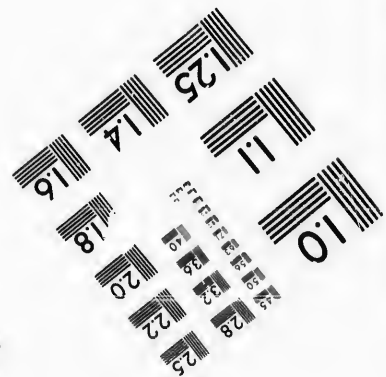
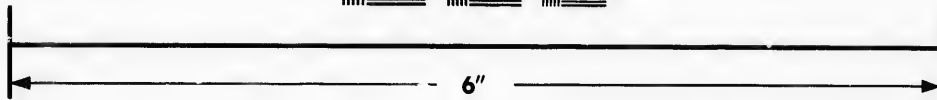
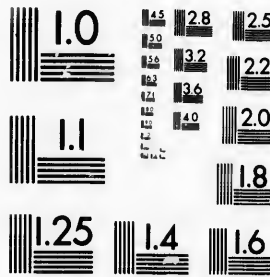


**IMAGE EVALUATION
TEST TARGET (MT-3)**



**Photographic
Sciences
Corporation**

23 WEST MAIN STREET
WEBSTER, N.Y. 14580
(716) 872-4503

4.5 2.8 2.5
3.0 3.2 2.2
3.6 2.0
1.8

**CIHM/ICMH
Microfiche
Series.**

**CIHM/ICMH
Collection de
microfiches.**



Canadian Institute for Historical Microreproductions / Institut canadien de microreproductions historiques

10
01

© 1986

Technical and Bibliographic Notes/Notes techniques et bibliographiques

The Institute has attempted to obtain the best original copy available for filming. Features of this copy which may be bibliographically unique, which may alter any of the images in the reproduction, or which may significantly change the usual method of filming, are checked below.

L'Institut a microfilmé le meilleur exemplaire qu'il lui a été possible de se procurer. Les détails de cet exemplaire qui sont peut-être uniques du point de vue bibliographique, qui peuvent modifier une image reproduite, ou qui peuvent exiger une modification dans la méthode normale de filmage sont indiqués ci-dessous.

- | | |
|--|--|
| <input type="checkbox"/> Coloured covers/
Couverture de couleur | <input type="checkbox"/> Coloured pages/
Pages de couleur |
| <input type="checkbox"/> Covers damaged/
Couverture endommagée | <input type="checkbox"/> Pages damaged/
Pages endommagées |
| <input type="checkbox"/> Covers restored and/or laminated/
Couverture restaurée et/ou pelliculée | <input type="checkbox"/> Pages restored and/or laminated/
Pages restaurées et/ou pelliculées |
| <input type="checkbox"/> Cover title missing/
Le titre de couverture manque | <input checked="" type="checkbox"/> Pages discoloured, stained or foxed/
Pages décolorées, tachetées ou piquées |
| <input type="checkbox"/> Coloured maps/
Cartes géographiques en couleur | <input type="checkbox"/> Pages detached/
Pages détachées |
| <input type="checkbox"/> Coloured ink (i.e. other than blue or black)/
Encre de couleur (i.e. autre que bleue ou noire) | <input checked="" type="checkbox"/> Showthrough/
Transparence |
| <input type="checkbox"/> Coloured plates and/or illustrations/
Planches et/ou illustrations en couleur | <input type="checkbox"/> Quality of print varies/
Qualité inégale de l'impression |
| <input type="checkbox"/> Bound with other material/
Relié avec d'autres documents | <input type="checkbox"/> Includes supplementary material/
Comprend du matériel supplémentaire |
| <input type="checkbox"/> Tight binding may cause shadows or distortion
along interior margin/
La reliure serrée peut causer de l'ombre ou de la
distorsion le long de la marge intérieure | <input type="checkbox"/> Only edition available/
Seule édition disponible |
| <input type="checkbox"/> Blank leaves added during restoration may
appear within the text. Whenever possible, these
have been omitted from filming/
Il se peut que certaines pages blanches ajoutées
lors d'une restauration apparaissent dans le texte,
mais, lorsque cela était possible, ces pages n'ont
pas été filmées. | <input type="checkbox"/> Pages wholly or partially obscured by errata
slips, tissues, etc., have been refilmed to
ensure the best possible image/
Les pages totalement ou partiellement
obscurcies par un feuillet d'errata, une pelure,
etc., ont été filmées à nouveau de façon à
obtenir la meilleure image possible. |
- Additional comments:/ [Printed ephemera] [4] p.
Commentaires supplémentaires:

This item is filmed at the reduction ratio checked below/
Ce document est filmé au taux de réduction indiqué ci-dessous.

10X	12X	14X	16X	18X	20X	22X	24X	26X	28X	30X	32X
						/					

The copy filmed here has been reproduced thanks to the generosity of:

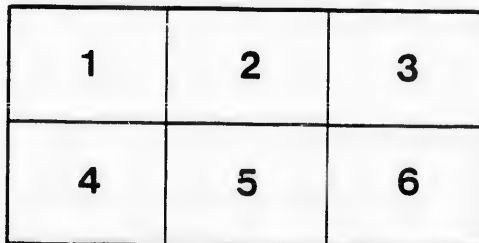
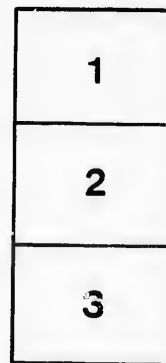
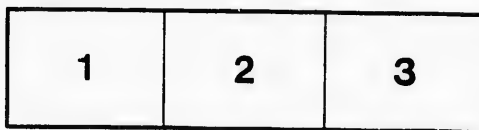
D. B. Weldon Library
University of Western Ontario
(Regional History Room)

The images appearing here are the best quality possible considering the condition and legibility of the original copy and in keeping with the filming contract specifications.

Original copies in printed paper covers are filmed beginning with the front cover and ending on the last page with a printed or illustrated impression, or the back cover when appropriate. All other original copies are filmed beginning on the first page with a printed or illustrated impression, and ending on the last page with a printed or illustrated impression.

The last recorded frame on each microfiche shall contain the symbol \rightarrow (meaning "CONTINUED"), or the symbol ∇ (meaning "END"), whichever applies.

Maps, plates, charts, etc., may be filmed at different reduction ratios. Those too large to be entirely included in one exposure are filmed beginning in the upper left hand corner, left to right and top to bottom, as many frames as required. The following diagrams illustrate the method:



L'exemplaire filmé fut reproduit grâce à la générosité de:

D. B. Weldon Library
University of Western Ontario
(Regional History Room)

Les images suivantes ont été reproduites avec le plus grand soin, compte tenu de la condition et de la netteté de l'exemplaire filmé, et en conformité avec les conditions du contrat de filmage.

Les exemplaires originaux dont la couverture en papier est imprimée sont filmés en commençant par le premier plat et en terminant soit par la dernière page qui comporte une empreinte d'impression ou d'illustration, soit par le second plat, selon le cas. Tous les autres exemplaires originaux sont filmés en commençant par la première page qui comporte une empreinte d'impression ou d'illustration et en terminant par la dernière page qui comporte une telle empreinte.

Un des symboles suivants apparaîtra sur la dernière image de chaque microfiche, selon le cas: le symbole \rightarrow signifie "A SUIVRE", le symbole ∇ signifie "FIN".

Les cartes, planches, tableaux, etc., peuvent être filmés à des taux de réduction différents. Lorsque le document est trop grand pour être reproduit en un seul cliché, il est filmé à partir de l'angle supérieur gauche, de gauche à droite, et de haut en bas, en prenant le nombre d'images nécessaire. Les diagrammes suivants illustrent la méthode.

Election Law

INVALUABLE FOR COUNTY JUDGES, MUNICIPAL COUNCILLORS AND
CLERKS, MEMBERS OF THE ONTARIO LEGISLATURE, CANDI-
DATES AND ELECTION OFFICERS AND AGENTS.

WILL BE PUBLISHED EARLY IN AUGUST. Probable Price, \$3.00.

A MANUAL

ON THE LAW AFFECTING THE

ELECTORAL FRANCHISE AND VOTERS' LISTS

FOR

LEGISLATIVE AND MUNICIPAL ELECTIONS IN ONTARIO,

WITH

NOTES OF DECISIONS

ON THE

QUALIFICATION AND REGISTRATION OF VOTERS UNDER THE
IMPERIAL AND PROVINCIAL FRANCHISE AND
ELECTION ACTS.

CONTAINING THE

VOTERS' LIST ACT (R.S.O. c. 9), *THE VOTERS' LIST FINALTY ACT, 1878* (41 Vic. c. 21),
THE VOTERS' LIST AMENDMENT ACT, 1879 (42 Vic. c. 3), *THE VOTERS' LIST*
AMENDMENT ACT, 1885 (48 Vic. c. 3), *THE FRANCHISE CLAUSES OF THE*
ELECTION ACT (R.S.O. c. 10), AND OF *THE FRANCHISE AND*
REPRESENTATION ACT, 1885 (48 Vic. c. 2).

WITH AN APPENDIX,

CONTAINING THE OPINIONS OF THE JUDGES OF THE COURT OF APPEAL ON
CASES SUBMITTED BY COUNTY JUDGES UNDER THE VOTERS' LISTS
ACTS; ALSO, PRACTICAL SUGGESTIONS FOR THE REVISION
OF VOTERS' LISTS, AND A SCHEDULE OF FORMS
FOR PROCEEDINGS UNDER THE ACTS.

BY

THOMAS HODGINS, Q.C.,

EDITOR OF "HODGINS' ELECTION CASES," "CANADIAN FRANCHISE ACT," ETC.

SECOND EDITION.

CARSWELL & CO.,

26 & 28 ADELAIDE STREET EAST, TORONTO.

FORM OF ORDER.

MESSRS. CARSWELL & CO.,

26 & 28 ADELAIDE ST. EAST, TORONTO.

which send me cop of Hodgins' Manual on Voters' Lists. Enclosed please find \$ for

Name,

Post Office

Date,

PREFACE.

The recent changes in the laws affecting the Electoral Franchise in Ontario,—by which the right of suffrage for Legislative Elections has been extended to nearly all male persons of full age,—have rendered necessary the publication of a second edition of the Editor's "Manual on Voters' Lists."

But while the Franchise for Legislative Elections has been generally approaching "Manhood Suffrage," the Municipal Franchise has remained at the qualifications fixed in 1873 (36 Vic. cap. 48) supplemented by the addition, in 1874, of Income Voters (37 Vic. cap. 3) and, in 1877, of Farmers' Sons (40 Vic. cap. 9.)

The titles of the two classes of Voters—for Legislative and Municipal Elections,—are not uniform, as may be seen by an examination of the annexed table. And the statutory directions given to Municipal Clerks in preparing the Voters' Lists have been framed more in harmony with the rules governing the Legislative, rather than the Municipal, Franchise. (See notes pp. 10-15.)

The registration of Voters for Legislative and Municipal Elections being inseparable, and being required to be incorporated in the one Voters' List, the notes appended to this Edition have been written with the view of assisting Municipal Clerks and others engaged in the preparation and revision of Voters' Lists, in the labor of harmonizing the divergent titles and qualifications prescribed for each Franchise.

T. H.

LEGISLATIVE ELECTORS.

Persons assessed as—	Residence in Electoral District.	Assessed Value.
(1) <i>Owners</i> ,..... (2) <i>Tenants</i> (3) <i>Occupants</i> (4) <i>Indians</i> — Subject to the same qualifica- tions and restric- tions as other persons, and who are— (a) Enfranchised... (b) Not resident with other In- dians (c) Not participat- ing in annuities*	Residents at final revision of the As- sessment Roll, and at the Election.	Cities and Towns \$200; Villages and Townships, \$100.
(5) <i>Income</i> (6) <i>Wage-earners</i> (7) <i>Householders</i> †— sole tenants or oc- cupants of dwell- ing-houses..... (8) <i>Landholders' sons</i> — (a) Sons of owner Father owner Mother owner (b) Sons of tenant Father tenant Mother tenant	Residents continu- ously since final revision of the As- sessment Roll, and at the Election. Residence in father's dwelling for 12 months prior to Assessor's return of the Assessment Roll, and at the Election.	\$250 taxable. \$250 not taxable. No value. Father's farm of 20 acres, no value. Father's other real property, as owner or tenant: cities and towns, \$200; villages & townships, \$100.

MUNICIPAL ELECTORS.

Persons assessed as—	Residence in Municipality.	Assessed Value.
(1) <i>Freeholders</i> (or Own- ers)..... (2) <i>Householders</i> (or Oc- cupants) (3) <i>Tenants</i> (4) <i>Income</i> (5) <i>Farmers' Sons</i> (a) Sons of owners of farm..... Father owner Mother owner	Residents and Non- residents..... Residents for one month before the Election Residents continu- ously since final revision of the As- sessment Roll..... Residents with father on farm owned by him for 12 months prior to Assess- or's return of the Assessment Roll	{ Cities, \$400. Towns, \$300. Villages, \$200. Townships \$100. } \$400. Father's farm assessed at value sufficient to give father and each son a vote at above ratio of qualification.

* This applies where there is no Voters' List.

† This is additional to the qualification of a Householder as an "Occupant."

