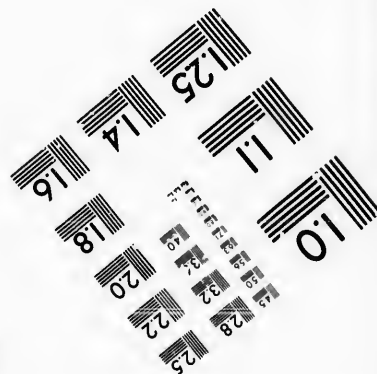
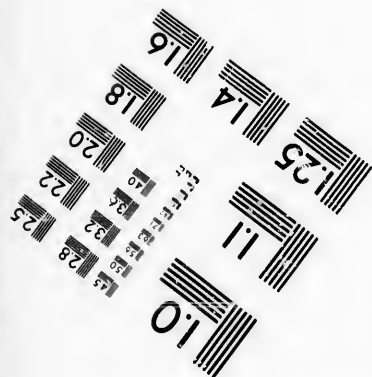
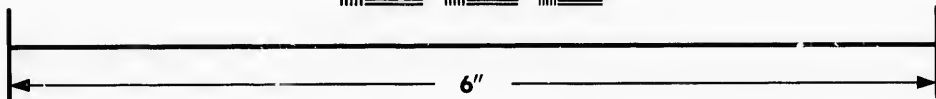
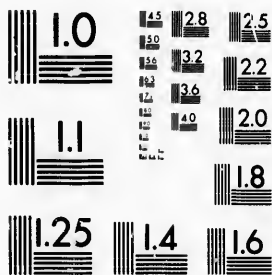


**IMAGE EVALUATION  
TEST TARGET (MT-3)**



**Photographic  
Sciences  
Corporation**

23 WEST MAIN STREET  
WEBSTER, N.Y. 14580  
(716) 872-4503

14  
16  
18  
20  
22  
25  
28  
32  
36

**CIHM/ICMH  
Microfiche  
Series.**

**CIHM/ICMH  
Collection de  
microfiches.**



**Canadian Institute for Historical Microreproductions / Institut canadien de microreproductions historiques**

01  
05  
57

**© 1987**

Technical and Bibliographic Notes/Notes techniques et bibliographiques

The Institute has attempted to obtain the best original copy available for filming. Features of this copy which may be bibliographically unique, which may alter any of the images in the reproduction, or which may significantly change the usual method of filming, are checked below.

L'Institut a microfilmé le meilleur exemplaire qu'il lui a été possible de se procurer. Les détails de cet exemplaire qui sont peut-être uniques du point de vue bibliographique, qui peuvent modifier une image reproduite, ou qui peuvent exiger une modification dans la méthode normale de filmage sont indiqués ci-dessous.

- Coloured covers/  
Couverture de couleur
- Covers damaged/  
Couverture endommagée
- Covers restored and/or laminated/  
Couverture restaurée et/ou pelliculée
- Cover title missing/  
Le titre de couverture manque
- Coloured maps/  
Cartes géographiques en couleur
- Coloured ink (i.e. other than blue or black)/  
Encre de couleur (i.e. autre que bleue ou noire)
- Coloured plates and/or illustrations/  
Planches et/ou illustrations en couleur
- Bound with other material/  
Relié avec d'autres documents
- Tight binding may cause shadows or distortion along interior margin/  
La reliure serrée peut causer de l'ombre ou de la distorsion le long de la marge intérieure
- Blank leaves added during restoration may appear within the text. Whenever possible, these have been omitted from filming/  
Il se peut que certaines pages blanches ajoutées lors d'une restauration apparaissent dans le texte, mais, lorsque cela était possible, ces pages n'ont pas été filmées.
- Additional comments:/  
Commentaires supplémentaires:

- Coloured pages/  
Pages de couleur
- Pages damaged/  
Pages endommagées
- Pages restored and/or laminated/  
Pages restaurées et/ou pelliculées
- Pages discoloured, stained or foxed/  
Pages décolorées, tachetées ou piquées
- Pages detached/  
Pages détachées
- Showthrough/  
Transparence
- Quality of print varies/  
Qualité inégale de l'impression
- Includes supplementary material/  
Comprend du matériel supplémentaire
- Only edition available/  
Seule édition disponible
- Pages wholly or partially obscured by errata slips, tissues, etc., have been refilmed to ensure the best possible image/  
Les pages totalement ou partiellement obscurcies par un feuillet d'errata, une pelure, etc., ont été filmées à nouveau de façon à obtenir la meilleure image possible.

This item is filmed at the reduction ratio checked below/  
Ce document est filmé au taux de réduction indiqué ci-dessous.

10X	12X	14X	16X	18X	20X	22X	24X	26X	28X	30X	32X
						✓					

The copy filmed here has been reproduced thanks to the generosity of:

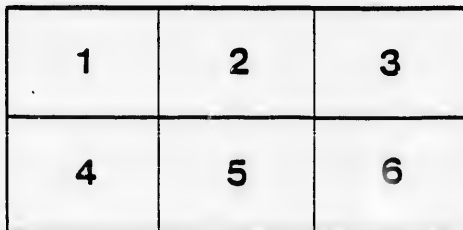
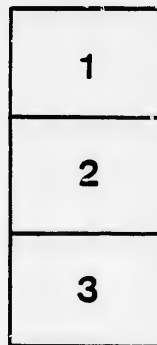
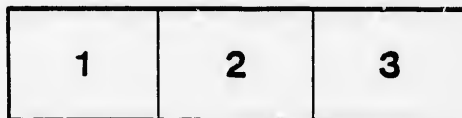
Library,  
Geological Survey of Canada

The images appearing here are the best quality possible considering the condition and legibility of the original copy and in keeping with the filming contract specifications.

Original copies in printed paper covers are filmed beginning with the front cover and ending on the last page with a printed or illustrated impression, or the back cover when appropriate. All other original copies are filmed beginning on the first page with a printed or illustrated impression, and ending on the last page with a printed or illustrated impression.

The last recorded frame on each microfiche shall contain the symbol  $\rightarrow$  (meaning "CONTINUED"), or the symbol  $\nabla$  (meaning "END"), whichever applies.

Maps, plates, charts, etc., may be filmed at different reduction ratios. Those too large to be entirely included in one exposure are filmed beginning in the upper left hand corner, left to right and top to bottom, as many frames as required. The following diagrams illustrate the method:



L'exemplaire filmé fut reproduit grâce à la générosité de:

Bibliothèque,  
Commission Géologique du Canada

Les images suivantes ont été reproduites avec le plus grand soin, compte tenu de la condition et de la netteté de l'exemplaire filmé, et en conformité avec les conditions du contrat de filmage.

Les exemplaires originaux dont la couverture en papier est imprimée sont filmés en commençant par le premier plat et en terminant soit par la dernière page qui comporte une empreinte d'impression ou d'illustration, soit par le second plat, selon le cas. Tous les autres exemplaires originaux sont filmés en commençant par la première page qui comporte une empreinte d'impression ou d'illustration et en terminant par la dernière page qui comporte une telle empreinte.

Un des symboles suivants apparaîtra sur la dernière image de chaque microfiche, selon le cas: le symbole  $\rightarrow$  signifie "A SUIVRE", le symbole  $\nabla$  signifie "FIN".

Les cartes, planches, tableaux, etc., peuvent être filmés à des taux de réduction différents. Lorsque le document est trop grand pour être reproduit en un seul cliché, il est filmé à partir de l'angle supérieur gauche, de gauche à droite, et de haut en bas, en prenant le nombre d'images nécessaires. Les diagrammes suivants illustrent la méthode.

tails  
du  
modifier  
une  
image

rrata  
o

elure,  
à

32X

OE819

V51

aves.

MOLLUSCA

DREDGED AND COLLECTED

BY

T. A. VERKRUZEN,

IN 1876,

IN THE NEIGHBOURHOOD OF ST. JOHN'S,  
NEWFOUNDLAND,

Including a few Species obtained from the Bay of Fundy.

ST. JOHN'S, N. F. :

J. C. WITHERS, QUEEN'S PRINTER.

1877.

*IN*

**Inc**

# MOLLUSCA

DREDGED AND COLLECTED

BY

T. A. VERKRUZEN,

IN 1876,

*IN THE NEIGHBOURHOOD OF ST. JOHN'S,  
NEWFOUNDLAND,*

**Including a few Species obtained from the Bay of Fundy.**

---

ST. JOHN'S, N. F. :  
J. C. WITHERS, QUEEN'S PRINTER.  
1877.

*In*

N.

I.

2.

3.

4.

5.

6.

7.



# MOLLUSCA

DREDGED AND COLLECTED

BY

T. A. VERKRUZEN,

IN 1876,

IN THE NEIGHBOURHOOD OF ST. JOHN'S, Nfld.,  
*Including a few Species obtained from the Bay of Fundy.*

N. B.—In detailing the same, I have followed the arrangement of  
GOULD in his Invertebra of Massachusetts.

---

1. *Solen Americanus*, Gould—Harbour of St. John's.  
1 dead Specimen in  
good preservation.
2. *Solecurtus gibbus*, Spengler—Harbour of St. John's.  
A few young indivi-  
duals.
3. *Glycimeris siligua*, Lam.—Narrows. 4 dead speci-  
mens in fair condition.
4. *Mya arenaria*, Linné—Harbour. Young, common ;  
old ones, rarer.
5. *Mya truncata*, L.—Harbour. Young, common ;  
old ones, rarer.
6. *Thracia truncata*, Brown, (*myopsis*, Beck)—  
Narrows. 5 young and 1 old  
dead specimens.
7. *Montacuta Dawsoni*, Jeffr.—Harbour. Locally  
pretty plentiful.

8. *Saxicava rugosa*, L.—Harbour and outer Bays; not scarce.
9. “ “ *var.*—Harbour and outer Bays; not scarce.
10. *Macra solidissima*, Chem. *v. ovalis*, Gould—Narrows. 1 young specimen.
11. *Tellina calcaria*, Chm. (*Macoma proxima*, Gray)—Harbour. Common.
12. *Axinus* (*Cryptodon*) *Gouldii*—Harbour. Rather scarce.
13. *Astarte compressa*, Mont.—Narrows. 2 fine live specimens; rare.
14. “ *castanea*, say—Narrows. 1 valve; and 1 live specimen from the Bank. 22.
15. “ *crebricostata*, Forbes—Narrows. 1 young spec. and 4 valves.
16. *Cyprina islandica*, L.—Bank. Various large valves. 23.
17. *Cardium islandicum*, L.—Harbour. Rather scarce. 24.
18. “ *fasciatum*, Mont.—Narrows. 3 dead specimens. 25.
19. “ (*aphrodite*) *gronlandicum*, Chm.—Harbour and Narrows, rather scarce, also from the Bank. 26.
20. “ “ (*aphrodite*) *gronlandicum*, *var. album*, V.—1 specimen from the Bank. The valves of this handsome variety are of a pale drab and semitransparent, whilst those of the type are variously and prettily marbled. 27.
21. *Cardita borealis*, *conr. var. St. Johnensis*, Verkr.—Harbour and Narrows, not common. This variety is distinct from the typical form by a broader and more equilateral shape; 28.  
30.  
31.  
32.  
33.

it is not inflected at the lunule below the umbones, and which the latter do not project, as it is more or less the case with the typus; it is finally much smaller, the largest dead adult valves being scarcely half the size of a typical *cardita borealis* from neighboring Southern seas. I am inclined to consider it a good species and would retain the name: *Cardita St. Johnensis*, Verkr.

22. *Cardita borealis*, var.—Narrows, rare. This var. has the shape of the type but not the wrinkles on its strong radiating ribs, but is smooth and of a lighter colour.
23. *Mysilus edulis*, L.—Harbour, common.
24. *Modiola modiolus*, L.—Harbour and outer sea, not scarce.
25. *Modiolaria laevigata*, Gray—Narrows, 1 valve.
26. *Crenella decussata*, Montagu— “ scarce.
27. *Crenella glandula*, Totten— “ and Cuckold Cove, scarce.
28. “ *fabia*, Moll—Narrows, scarce.
29. *Pecten islandicus*, Moll—Narrows and great Bank, abundant.
30. “ *tennicostatus*, Mi. & Ad.—Narrows, 1 valve, and fine specimens from the Bay of Fundy.
31. *Lima elliptica*, Jeffr.—Narrows, 1 valve.
32. “ *subauriculata*, Mont.—Narrows, 1 valve.
33. *Anomia ephippium*, L.—Narrows and outer Bays, sparingly and small.

34. *Anomia ephippium*, *V. acculeata*, *gme.*—Narrows,  
Valves. 4
35. *Utriculus Gouldii*, *Couth.*—Harbour, scarce. 4
36. *Chiton ruber*, *L.*—Narrows and outer sea, plen-  
tiful. 4
37. “ *marmorens*, *Fabr.*—Narrows and outer sea,  
plentiful. 4
38. “ “ *var. pusulosus*, *Verkr.*—Narrows ;  
scarce. This variety does  
not show the rectangular  
ribs on the shields, which  
are peculiar to the type, or  
sometimes very faintly only,  
but it is covered over with  
minute pustules, not visible  
to the naked eye. 4
39. “ “ *var. St. Johnensis*, *Verkr.*—This  
elegant variety is of a brilliant  
green color, especially when  
alive, and in sculpture inclines  
rather to the preceding variety  
more than to the type, I obtain-  
ed but few specimens. 5
40. *Chiton albus* *Mont.*—Narrows and outer sea, pret-  
ty abundant. 5
41. *Tectura testudinalis*, *Mull.*—Small in the Narrows ;  
larger at Petty Har-  
bour. 5
42. *Lepeta caeca*, *Mull.*—Narrows and outer bays,  
scarce. 5
43. *Pilidium rubellum*, *Fabr.* (*Tectura rubella*)—Nar-  
rows and outer bays, rather  
scarce ; small. 6
44. *Puncturella (cemoria) noachina*, *L.*—Narrows, &c.,  
scarce. 6
45. *Molleria costulata*, *Moll.*—Harbour, middling  
scarce. 6

46. *Molleria costulata*, Moll.—Harbour, middling scarce.
47. *Margarita cinerea*, Couth.—Narrows and outer sea, scarce.
48. “ *greenlandica*, Mull. (*undulata*, son.)—Narrows and outer sea, abundant.
49. “ *helicina*, Fabr.—Harbour and Narrows, middling plentiful.
50. “ *argentata*, Gould—Harbour and Narrows, not scarce.
51. *Skenea planorbis*, Fabr.—Harbour and Conception Bay, rather abundant.
52. *Rissoa striata*, Adms. var. *ardira*—Quidi Vidi Cove, dead, plentiful.
53. “ *arenaria*, Mi. and Adms.—Harbour, pretty abundant.
54. “ *globulus*, fide, Jeffreys—Harbour, scarce.
55. *Lacuna divaricata*, Fabr.—Harbour, in deep water plentiful.
56. “ “ *var. quadrifasciata*—Harbour, in deep water plentiful.
57. “ “ *var. pellucida*—Petty Harbour, rather scarce; almost transparent.
58. “ “ *var.*—A small dark *litoral* variety, Conception Bay.
59. *Litorina rudis*, Maton—Conception Bay, rather plentiful.
60. “ *obtusata*, L. (? v. *palliata*, say)—Conception Bay and Petty Harbour. Do not seem to differ from the European specimens of *obtusata*.
61. *Scalaria gronlandica*, Chm.—1 large dead well preserved specimen in

Cuckold Cove, and  
one fragment, Nar-  
rows.

62. *Acirsa Eschrichti*, Holboll—1 young spe., Narrows.
63. *Turrtella acicula*, Stimps—Harbour, several dead specimens.
64. *Menesiho striatula*, Couth—Narrows, 1 dead specimen.
65. *Velutina laevigata*, L.—Narrows, scarce.
66. *Natica affinis*, Gml, (clausa, Sow)—Narrows, scarce.
67. " (*amauropsis*) *islandica*, Gmel.—Outer bay, 1 dead specimen.
68. " *inmaculata*, Totten—Narrows, 1 dead specimen.
69. *Bela turricula*, Mont.—Harbour, 2 small specimens, rather stunted.
70. " " *var. rosea*, say—Harbour, not scarce, fair size.
71. " *Trevelyana Turl.* (*v. rosea*)—Harbour, 1 good specimen, tinted.
72. " " *var. Smithii*, Jeffr.—Harbour, not scarce, peculiarly interesting.
73. " *violacea*, Mi. and Ad.—Harbour, plentiful.
74. " *harpularia*, Couth—Harbour, 1 dead specimen.
75. " *pyramidalis*, Moll—Harbour, 1 fine live specimen.
76. " *Pingeli*, Moll—Harbour, 1 young specimen.
77. *Purpura lapillus*, L.—Plain and striped. Harbour and C., plentiful.
78. *Trichotropis borealis*, Sow. *var. St. Johnensis*, Verkr.—Harbour and Narrows. This fine variety is distinguished from the European type by a larger

size and stronger texture, *strong* bright yellow brown Epidermis, a more projecting outer lip, and is frequently coloured within of a lively brownish yellow. It may be called the handsomest Shell of St. John's Harbour.

79. *Buccinum undatum*, L.—Harbour and outer Bays, not abundant, a close approach to the European form of the North Sea; also the handsome American typus with golden throat from the Bay of Fundy.
80. " " *var. A.*—Bank, (probably *Bucc. Donovanii*, Gray), 2 specimens.
81. " " *var. B.*—Bank.
82. " " *var. C.*— "
83. " " *var. D.*— "
84. " " ? *nov. spe.*—Bank, (? *perhaps B. sericatum*, Hancock.)

These three are similar to each other, yet not alike; they differ much from the European and American type; having but one specimen of each, I withhold an opinion until more are obtained.

85. *Fusus* (*Neptunea*) ? *spe.*—Bank.  
 86. “ *decemcostatus*—Bank, 1 live but unfortunately broken specimen. Verte. A close approach to the European form of the North Sea.
87. *Fusus lyratus*, Martyn.  
 88. *Natica heros*, Say.  
 89. “ *triseriata*, Say.  
 90. *Yoldia myalis*, Couth.  
 91. *Maetra solidissima*, Chem. v.  
 92. *Venus* ? *notata*, Say.

} These last six species only from the Bay of Fundy, Nova Scotia.

Besides the above Mollusca, I obtained an interesting variety of Crustacea, Tunicata, Ectinodermata, Actinozoa, Boltenia, Annelida, &c., in a great measure from the Bank, and some, especially the Crustacea, also from St. John's Harbour, the Narrows and outer Sea. These are still under investigation, not being my speciality.

Frankfurt, <sup>a</sup>/M., May, 1877.

T. A. VERKRUZEN.





46. *Molleria costulata*, Moll. var. *glabra*, Verkr.—  
Harbour. scarce. Instead of the  
strong ribs of growth of the type,  
this var. is quite smooth; inter-  
mediates have faint ribs.

