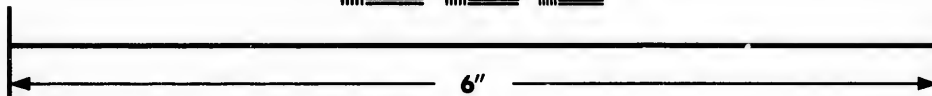
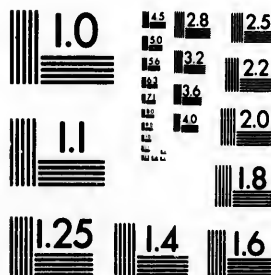


IMAGE EVALUATION TEST TARGET (MT-3)



Photographic Sciences Corporation

**23 WEST MAIN STREET
WEBSTER, N.Y. 14580
(716) 872-4503**

**CIHM/ICMH
Microfiche
Series.**

**CIHM/ICMH
Collection de
microfiches.**



Canadian Institute for Historical Microreproductions / Institut canadien de microreproductions historiques

© 1985

Technical and Bibliographic Notes/Notes techniques et bibliographiques

The Institute has attempted to obtain the best original copy available for filming. Features of this copy which may be bibliographically unique, which may alter any of the images in the reproduction, or which may significantly change the usual method of filming, are checked below.

L'Institut a microfilmé le meilleur exemplaire qu'il lui a été possible de se procurer. Les détails de cet exemplaire qui sont peut-être uniques du point de vue bibliographique, qui peuvent modifier une image reproduite, ou qui peuvent exiger une modification dans la méthode normale de filmage sont indiqués ci-dessous.

- ☒ Coloured covers/
Couverture de couleur
- ☐ Covers damaged/
Couverture endommagée
- ☐ Covers restored and/or laminated/
Couverture restaurée et/ou pelliculée
- ☐ Cover title missing/
Le titre de couverture manque
- ☐ Coloured maps/
Cartes géographiques en couleur
- ☐ Coloured ink (i.e. other than blue or black)/
Encre de couleur (i.e. autre que bleue ou noire)
- ☐ Coloured plates and/or illustrations/
Planches et/ou illustrations en couleur
- ☐ Bound with other material/
Relié avec d'autres documents
- ☐ Tight binding may cause shadows or distortion
along interior margin/
La reliure serrée peut causer de l'ombre ou de la
distortion le long de la marge intérieure
- ☐ Blank leaves added during restoration may
appear within the text. Whenever possible, these
have been omitted from filming/
Il se peut que certaines pages blanches ajoutées
lors d'une restauration apparaissent dans le texte,
mais, lorsque cela était possible, ces pages n'ont
pas été filmées.
- ☐ Additional comments:/
Commentaires supplémentaires:

- ☐ Coloured pages/
Pages de couleur
- ☐ Pages damaged/
Pages endommagées
- ☐ Pages restored and/or laminated/
Pages restaurées et/ou pelliculées
- ☒ Pages discoloured, stained or foxed/
Pages décolorées, tachetées ou piquées
- ☐ Pages detached/
Pages détachées
- ☒ Showthrough/
Transparence
- ☐ Quality of print varies/
Qualité inégale de l'impression
- ☐ Includes supplementary material/
Comprend du matériel supplémentaire
- ☐ Only edition available/
Seule édition disponible
- ☐ Pages wholly or partially obscured by errata
slips, tissues, etc., have been refilmed to
ensure the best possible image/
Les pages totalement ou partiellement
obscurcies par un feuillet d'errata, une pelure,
etc., ont été filmées à nouveau de façon à
obtenir la meilleure image possible.

This item is filmed at the reduction ratio checked below/
Ce document est filmé au taux de réduction indiqué ci-dessous.

10X	14X	18X	22X	26X	30X
<input type="checkbox"/>	<input checked="" type="checkbox"/>	<input type="checkbox"/>	<input type="checkbox"/>	<input type="checkbox"/>	<input type="checkbox"/>
12X	16X	20X	24X	28X	32X

The cop
to the g

The im
possible
of the c
filming

Origina
beginni
the last
sion, or
other o
first pa
sion, an
or illust

The las
shall co
TINUED
whiche

Maps,
differen
entirely
beginni
right a
require
methoo

The copy filmed here has been reproduced thanks to the generosity of:

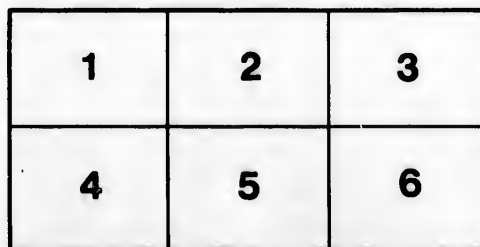
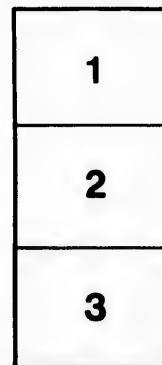
Metropolitan Toronto Library
Canadian History Department

The images appearing here are the best quality possible considering the condition and legibility of the original copy and in keeping with the filming contract specifications.

Original copies in printed paper covers are filmed beginning with the front cover and ending on the last page with a printed or illustrated impression, or the back cover when appropriate. All other original copies are filmed beginning on the first page with a printed or illustrated impression, and ending on the last page with a printed or illustrated impression.

The last recorded frame on each microfiche shall contain the symbol → (meaning "CONTINUED"), or the symbol ∇ (meaning "END"), whichever applies.

Maps, plates, charts, etc., may be filmed at different reduction ratios. Those too large to be entirely included in one exposure are filmed beginning in the upper left hand corner, left to right and top to bottom, as many frames as required. The following diagrams illustrate the method:



L'exemplaire filmé fut reproduit grâce à la générosité de:

Metropolitan Toronto Library
Canadian History Department

Les images suivantes ont été reproduites avec le plus grand soin, compte tenu de la condition et de la netteté de l'exemplaire filmé, et en conformité avec les conditions du contrat de filmage.

Les exemplaires originaux dont la couverture en papier est imprimée sont filmés en commençant par le premier plat et en terminant soit par la dernière page qui comporte une empreinte d'impression ou d'illustration, soit par le second plat, selon le cas. Tous les autres exemplaires originaux sont filmés en commençant par la première page qui comporte une empreinte d'impression ou d'illustration et en terminant par la dernière page qui comporte une telle empreinte.

Un des symboles suivants apparaîtra sur la dernière image de chaque microfiche, selon le cas: le symbole → signifie "A SUIVRE", le symbole ∇ signifie "FIN".

Les cartes, planches, tableaux, etc., peuvent être filmés à des taux de réduction différents. Lorsque le document est trop grand pour être reproduit en un seul cliché, il est filmé à partir de l'angle supérieur gauche, de gauche à droite, et de haut en bas, en prenant le nombre d'images nécessaire. Les diagrammes suivants illustrent la méthode.

aire
détails
ues du
t modifier
ger une
e filmage

uées

ire

oy errata
ed to

ent
ne pelure,
çon à

THE
AMERICAN HOUSE
Crabeller's Guide



FOR
RIVER ST. LAWRENCE,
AND THE CITIES OF
Montreal, Quebec & Ottawa.

MONTREAL:

PRINTED BY DANIEL ROSE, 431 NOTRE DAME ST.
1868.



J. T HENDERSON, GENTLEMEN'S HABERDASHER

SHIRT AND COLLAR

MANUFACTURER,

HOSIER, GLOVER, &c.,

No. 415 Notre Dame Street,

(CORNER ST. PETER,)

MONTREAL.

White Dress Shirts,
Regetta Shirts,
Fancy Flannel Shirts,
Night Shirts,
Shirt Collars, Cuffs,
and Dickies,
Plain and Fancy Silk
Scarfs,
Blk Silk & Fancy Ties
Silk and Cambric
Handkerchiefs,
&c. &c. &c.

Gent's Underclothing,
Shirts, Drawers,
Hose and Half Hose, in
Silk, Wool, Merino,
Cotton, &c.
Gloves of all descrip-
tions,
Braces, Kid Mitts,
Collar Studs,
Scarf Pins, &c.
Umbrellas, Walking
Canes, &c., &c.

SHIRTS MADE TO ORDER.

H
288

FRE

D

BEG
of
now r
erected
one of
City co

12

followi

12

Organ
Lace
Haben

Ale
Duche



N,
HER

c.,
street,

othing,
ers,
Hose, in
Merino,

descrip-


ttts,

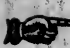
alking
tc,

DER,

H. & H. MERRILL,
288 & 290 Notre Dame Street,
IMPORTERS OF
FRENCH & ENGLISH
FANCY AND STAPLE
DRY GOODS,

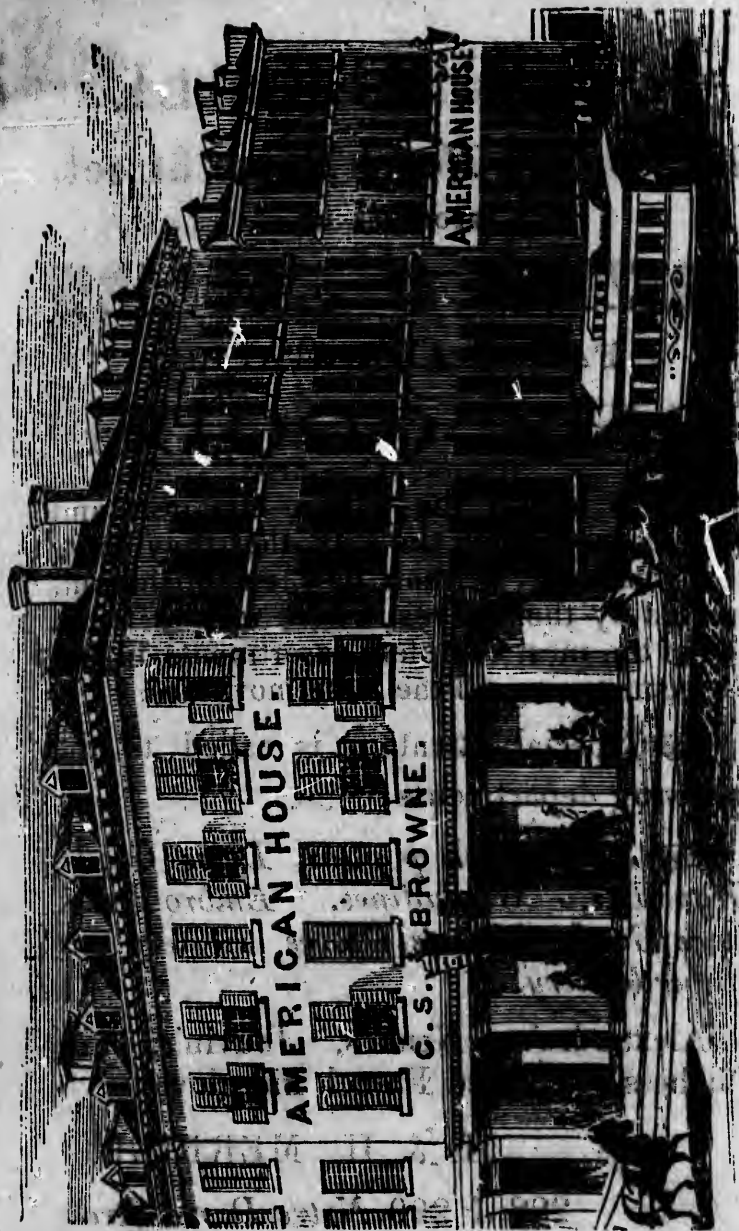
BEG to inform the public, strangers and others visiting the City, that they have now removed to their new establishment, erected by themselves, where will be found one of the most complete assortments in the City comprising all the latest novelties.

 Special attention is called to the following departments:

 *Silks, Irish poplins, Dress Goods, Organdies, Grenadines, Embroideries, Lace Goods, Shawls, Gloves, Hosiery and Haberdashery.*

Alexandre's, Nemo's, Jouvin's, and Duchess celebrated French kid gloves.

H. & H. MERRILL,
288 & 290 Notre Dame Street.



BR 917.14 A51

C.

This
ed by
dious
Hotel
repair

The
is a c
doors
Jame
street
ed, w
town,
travel

In ma
great
and b
impr

Hotel
Hot
priet
comm
tion.
Depo
buse

Brea
Din
Tea

American House, MONTREAL.

C. S. BROWNE, - - - PROPRIETOR.

This well known Hotel having been enlarged by the addition of that large and commodious house heretofore known as the Exchange Hotel. The whole has undergone thorough repairs and been newly furnished.

The house fronts on St. Joseph Street, which is a continuation of Notre Dame and is but 4 doors from McGill Street, is near Great St. James, St. Paul, and all the principal business streets of the city. Being very *centrally located*, with regard to all places of interest about town, it cannot fail to commend itself to parties travelling either on business or for pleasure. In making the repairs, the proprietor has taken great pains to provide *every comfort for his guests*, and has fitted the house up with all the modern improvements and requirements for a *first class Hotel*, including gas in every room in the house, Hot and Cold Baths, etc., etc. And the proprietor feels that he can offer to his guests accommodations that cannot fail to give satisfaction. Porters always in attendance at the Depot and Steamboat Landings with omnibuses to the house.

HOURS FOR MEALS.

Breakfast from	7.30 to 9.50 o'clock.
Dinner	"	1.00 " 2.30 "
Tea	"	6.00 " 7.30 "

BANCROFT & CO'S LIVERY STABLES.

We beg respectfully to announce to the public, that we have newly fitted up the finest Livery in Montreal, consisting of:

Covered Bicks, Double Carriages,
Family Carryalls, Open and Top Buggies,
Chaises, Dog Carts, &c.

Weddings, Parties & Funerals
attended at reasonable rates.

SADDLE HORSES at short notice.

Strangers visiting the City wishing a drive, will find it for their interest to give us a call.

Office, 93 Great St. James Street,
Stables, 593 LaGauchetiere Street.

E. I. BANCROFT,
J. T. MOREY,
Proprietors.

RAPIDS OF THE ST. LAWRENCE,
AND PLACES OF INTEREST, WITH DISTANCES FROM
OGDENSBURGH TO MONTREAL.

Chimney Island, four miles below Prescott or Ogdensburgh.

The Galop rapids, six miles below Prescott, are easily passed by steamboats although they prevent the navigation of the St. Lawrence by sailing vessels.



S
CA

ENG
AI

Silve

A

Whi

CO'S
ES.

to the pub-
the finest
g of:

riages,
Buggies,

minerals

ce.
g a drive,
us a call.

FT,

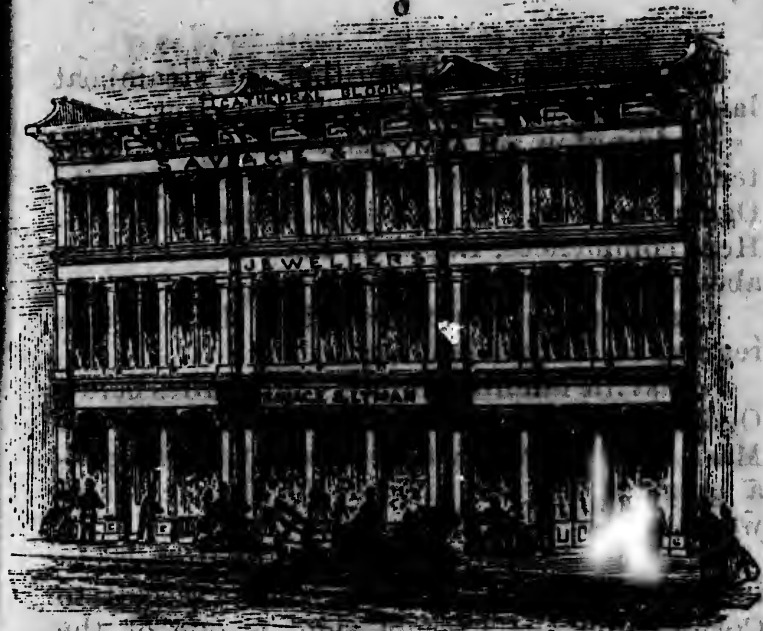
prietors.

ENCE,

IS FROM

Prescott

Prescott,
gh they
ence by



SAVAGE & LYMAN,
CATHEDRAL BLOCK,
271 Notre Dame Street,

Have for sale a large and select stock of fine
ENGLISH AND SWISS GOLD WATCHES,
Also, Fine Gold Jewellery of the latest
European Styles,

MANTLE CLOCKS,
Silver and Electroplated Ware, Papier Mache
Ware, Tourists, Field and Opera Glasses,
Ladies' and Gentlemen's Dressing Cases
and Bags, and

A VARIETY OF FANCY GOODS.
ALSO, MILITARY GOODS,
Whitworth, Hay, Kerr & Enfield Rifles. To the Inspec-
tion of which they respectfully invite Tourists.

Iriquois, eight miles further is a steamboat landing on the Canada side of the river.

Waddington, on the American shore eighteen miles below Ogdensburgh, lies opposite Ogden's Island. Which is passed to the right. Here commences, Rapid du Plat, and extends about two and a half miles.

Morrisburg, seven miles below Matilda, is a regular steamboat landing.

Louisville landing, twenty-eight miles below Ogdensburgh is where passengers leave for Massena Springs, six miles distant by stage—a great resort for invalids during the warm weather.

The Long Sault Rapid, extending from Dickinson's Landing, forty miles below Prescott, to Cornwall on the Canada side, is one of the longest and most important rapids of the St. Lawrence.

The Cornwall Canal commences about ninety miles above Montreal. It extends to Cornwall eleven and a half miles, overcoming forty-eight feet descent in the St. Lawrence.

Cornwall, one hundred and twenty miles from Kingston, and eighty miles above Montreal, situated near the foot of the Cornwall or St. Lawrence Canal. This is a regular steamboat landing for American and British steamers.

St. Regis, four miles below on the American side of the river, is an Indian village; part of its inhabitants living in the U. States and part in Canada, being divided by the 45th parallel in N. latitude.

Lake St. Francis is a magnificent expansion of

PROWSE BROTHERS,
128 GREAT ST. JAMES STREET,
MONTREAL.



Manufacturers of and Dealers in
Japanned, Polished and Plain
TIN WARE,

HOT AIR FURNACES, BATHS,

Refrigerators, Cooking, Hall
and Parlour Stoves,

IRON BEDSTEADS.

Workers in Tin, Galvanized Iron and
Copper Roofs, &c.

the St. Lawrence above Coteau du Lac, extending thirty-six miles. It is studded with picturesque Islands. The Indian village of St. Regis, and an Island owned by the natives, lie near its Upper termination.

Lancaster, eighteen miles below Cornwall.

At Coteau du Lac, 50 miles (by water) above Montreal, commences a rapid of the same name extending about two miles.

Seven miles below this commences the Cedar Rapid, which extends about three miles. Then comes the Coteau, Cedar, Split Rock and Cascade Rapids, which terminate at the Head of Lake St. Louis, where the dark waters of the Ottawa by one of its mouths, join the St. Lawrence. These rapids in eleven miles have a descent of 82½ feet.

Beauharnois is at the foot of the Cascade Rapids, at the termination of the Beauharnois Canal, twelve miles in length.

Caughnawaga, opposite Lachine, is an Indian village numbering several hundred inhabitants.

Lachine, eight miles by land (double that distance by water,) above Montreal, situated on Lake St. Louis, where enter the black waters of the Ottawa River, St. Lawrence presenting a greenish hue.

The Lachine Rapids, a few miles above Montreal are the last rapids of importance that occur on the St. Lawrence. They are now considered the the most dangerous and difficult of navigation. They are obviated by the Lachine canal, 8½ miles in length, overcoming a descent of 44½ feet.



OWEN M'GARVEY,

Manufacturer and wholesale and Retail
Dealer in

EVERY STYLE OF PLAIN AND FANCY

FURNITURE;

NOS. 7, 9 & 11 ST. JOSEPH ST.,

Second Door from McGill,

(Op. American House,)

MONTREAL.

*Orders from all parts of the Province
carefully executed and delivered according
to instructions, free of charge.*

And now the traveller comes to the last wonder of the present age, namely, the Victoria Bridge, spanning the noble St. Lawrence River, two miles long, the longest and largest Bridge in the world, after which the delighted traveller comes in full view of the city of Montreal, the most prominent object being the two towers of the church of Notre Dame.

CITY OF MONTREAL.

The City of Montreal is the largest and most populous city in British North America. It was founded by M. de Maissonneuve, in 1642, on the site of an Indian village named Hochelaga, and dedicated to the Virgin Mary as its patroness and its protector, and for a long period bore the name of *Ville Marie*. It is laid in the form of a parallelogram, and contains some two hundred streets, with a population of over 125,000.

The traveller, in approaching the city from the river, is struck with the peculiar beauty of the large cut stone buildings which front the majestic river St. Lawrence on whose banks they are reared, resembling in their solid masonry and elegance the buildings of European cities.

The Island of Montreal is, in fact, most properly regarded as the garden of Canada. The city being at the head of ship navigation her local advantages are unsurpassed.

PLACES OF INTEREST.

Among the many substantial and elegant edifices in the city of recent completion, may be mentioned.

ANGLO-CANADIAN HOUSE,

218 MCGILL STREET,

MONTREAL,

TURGEON & BROTHER,

Merchant Tailors.

Always on hand an assortment of

Cloth, Tweed, Casimir,

READY-MADE CLOTHING,

HATS, TIES, &C.

The New Court House, on Notre Dame street, and directly opposite to Nelson's Monument, is of elegant cut stone in the Grecian Ionic style. The ground plan is 300 by 125 ft.; height 76 ft.

The Post Office, on Great St. James street, opposite St. Lawrence Hall, is a beautiful cut stone building.

The Merchants' Exchange, situated on St. Sacramento Street.

The Mechanics' Institute, a very fine building situated on Great St. James street of cut stone, three stories high, built in the Italian style. The Lecture Room is tastefully finished.

The Mercantile Library Association, Bonaventure Street.

The Bank of Montreal, Place d'Armes, St. James St., opposite the Cathedral, an elegant cut stone building of the Corinthian order.

The City Bank, next to the above, in the Grecian style of cut stone, and worthy of note.

The bank of British North America, Great St. James street, next to the Post-Office, is a handsome building of cut stone, and built in the composite style of architecture.

Molson's Bank, Great St. James street, is a handsome structure, built of Ohio sandstone.

The Bonsecours Market on St. Paul and Water streets, is a magnificent edifice in the Grecian and Doric style: cost about \$300,000; has a front of three stories on Water street, and two stories on St. Paul. The Upper part of the building is occupied by the various officers of the city. The City Council Room is fitted up in the most elegant style. In the east wing of the building is a large Hall or Concert Room.

P. D. BROWNE,

Banking & Exchange.

OFFICE:

NO. 18 GREAT ST. JAMES ST.,

Two Doors above the POST OFFICE,

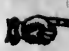
(Opposite the People's Bank,)

GREENBACKS, DRAFTS ON U. STATES,

Silver and all uncurrent Money

BOUGHT & SOLD

AT MOST LIBERAL PRICES.

 **Cash advanced on negotiable security.**

The McGill College.—This is an institution of very high repute. It was founded by the Hon. James McGill, who bequeathed a valuable estate and £10,000 for its endowment. The buildings for the faculty of Arts, are delightfully situated at the base of the mountain, and commands an extensive view.

The Museum of the Natural History Society of Montreal is situated on University Avenue, corner Cathcart street.

The New City Water Works.—These works tap the St. Lawrence at the Lachine Rapids, some six miles above the city, they cost the city when completed \$1,000,000. The two receiving reservoirs for supplying the city are about 200 feet above the level of the river, and hold twenty millions of gallons.

The Jail.—This is a substantial stone building surrounded by a high wall and is worthy of a visit.

The General Hospital, on Dorchester street, is a fine cut stone building, and is one of the many prominent institutions of the city.

The Protestant Orphan Asylum, situated in Catherine street, is a well conducted charity, sustained by the benevolence of private individuals.

The Ladies' Benevolent Institution, for the relief of widows and half orphans, is a large three storey building in Berthelet street. It is managed solely by a committee of ladies.

The Theatre Royal, Cote Street, is a fine brick building and capable of accomodating about 1500 persons.

ALEX. SHANNON & CO.

GROCCERS,

Wine & Spirit Merchants,

102 & 104 M^CGILL STREET,

MONTREAL.

Have constantly on hand a well assorted
stock of Teas, Coffees, Sugars, Spices,
Mustards, Provisions, Ham, Fish,
Salt, &c. Port, Sherry, Madeira
and other Wines, H. Wines,
Brandy, Gin, Scotch Whis-
key, Jamaica Rum, Syrups
&c., &c., &c.

*Country Merchants are invited to call and examine
their Stock before purchasing elsewhere.
Terms Liberal.*

St. Patirck's Hall, Victoria Square, erected by the Irish citizens of Montreal.

The wharves of the city are unsurpassed by any on the American Continent. They are built of wood and meeting with the locks and cut stone wharves of the Lachine Canal, they present for several miles a display of continuous wharfage which has few parallels. Unlike the levees of the Ohio and Mississippi, no unsightly warehouses disfigure the river side. A broad terrace faced with grey limestone the parapets of which are surmounted with a substantial iron railing, divides the city from the river throughout its whole extent.

The remaining public buildings worthy of notice are, the Old Government House, Notre Dame street, now occupied as the Normal School; the Barracks; the Custom House, St. Paul street; the Bon Pasteur Nunnery and Hotel Dieu Hospital, Sherbrooke St.; Church of the Gesu, Bleury street.

Mount Royal Cemetery is situated on the east side of the mountain, about two miles from the city. Judgement and taste have been displayed in the selection and management of the grounds: it is much visited by strangers.

The Champ de Mars.—This is a favourite promenade for citizens and strangers, being the general parade and review ground of the military, and is frequently enlivened during the summer evenings by music from the fine bands of the regiments.

Viger Square, near the Champ de Mars, is beautifully laid out into a Garden, with conservatory, fountains, &c.

T. W. BOYD.
GUN, PISTOL,
AND
FISHING TACKLE

MANUFACTURER,
No. 3 STEPHENS' BLOCK,
NOTRE DAME ST., late 225,

MONTREAL.

*All Orders executed with Promptness and
 at Low Prices.*

Place d'Armes, is a handsome Square between Notre Dame and Great St. James streets, opposite the French Cathedral. It is surrounded by a neat iron railing, and tastefully laid out and planted with shade trees; in the centre of the square is a fountain.

The Victoria Bridge.—The cost of this gigantic structure was originally estimated at £1,450,000, but this sum has since been reduced and the present calculation of its cost is about £1,250,000. In its erection 250,000 tons of stone, and 7500 tons of iron have been used. The iron superstructure is supported on 24 piers and 2 abutments. The centre span being 330 feet; there are 12 spans each side of the centre 242 feet each. The length of the abutments is 242 feet each. The extreme length, including abutments is 7000 feet. The height above summer water level in the central opening is 60 feet, descending to either end at the rate of 1 in 130. The contents of the masonry is 3,000,000 of cubic feet. The weight of iron in the tubes is 8000 tons. The following are the dimensions of tube through which the trains pass in the middle span, viz.: 22 feet high, 16 feet wide; at the extreme ends, 19 feet high and 16 feet wide. The total length from river bank to river bank is 10,284 feet, or about 50 yards less than two English miles.

The Lachine Canal is among the public works particularly worthy of note and of which the city may well feel proud. The

JOHN



CR

28

STR

dress

ENC

and in

CURR

is on v

J. H. F.

B. H. F.

(ESTABLISHED IN 1834.)

JOHN HENDERSON & CO.,**Hatters & Furriers,****CRYSTAL BLOCK,****283. NOTRE DAME STREET,****MONTREAL.**

STRANGERS visiting Montreal, will please
note that they may find at the above ad-
dress the **LATEST STYLES OF**

ENGLISH, FRENCH AND AMERICAN**HATS.**

Guests at this Hotel are invited to call
and inspect our stock of **FURS** and **INDIAN**
CURIOSITIES, of which a choice assortment
is on view all the year round.

JOHN HENDERSON & CO.*Crystal Block,***J. H. BOTTEBELL. 283 Notre Dame Street,****B. H. BOTTEBELL.**

head of water on this Canal has been rendered available for the Creation of water power, which has been applied most successfully to the movement of very extensive machinery over a large extent of ground. Among the works here are foundries, engine and boiler works, ship yard and marine works, saw mills, sash blind and door factories, flour mills, cotton mills, edge tool factories, &c.

As a place of beauty and pleasure, the ride from the City around Mount Royal will attract the traveler at all times. The distance is nine miles, commanding one of the finest views of beautiful landscape to be found in North America; and in returning, entering the city a view of the St. Lawrence and of Montreal, both comprehensive and extended, that well repays time and expense.

Next to the drive around the mountain is that on the Machine road, leading to the village of that name, nine miles from the city. The road is directly along the banks of the river, presenting scenery of unsurpassed beauty and grandeur. It is a lovely drive. If the proper hour is selected, a view may be had of the descent of the steamer over the rapids.

Another favorite drive in the immediate vicinity is to Longue Pointe, being in an opposite direction from the last and down along the banks of the river.

W. F. LEWIS & CO.,

IMPORTERS AND GENERAL

WINE AND SPIRIT

MERCHANTS,

ST. PETER STREET,

MONTREAL.

It would be useless to undertake an enumeration of all the places of interest in and about Montreal, for we believe that there are but few places on the American Continent where can be found so much of interest to the traveller, whether in pursuit of health or pleasure, as in this city.

Railroad and Steamboat Offices.

Grand Trunk Railway Offices, for Quebec, Portland Toronto, &c., in Place d'Armes.

Depot—Bonaventure Street.

Upper Canada Line of Steamers—78 Gt. St. James st.

Ottawa City Steamboat Office—Mercantile Library Building, Bonaventure Street. Passengers go via Lachine Railroad, Bonaventure Depot.

Quebec Steamboat Office, 29 Commissioners Street.

All Stages and Omnibusses to and from the Cars and Steamers, call at the American House.

Parties of Pleasure or on business who desire carriages will be accommodated by leaving their orders at the office of the American House.

Currency.

Canada £ \$4; Canada Shilling, 20 cents; Canada Sixpence, 10 cts.; British Sixpence, 12½ cts.; British Shilling, 25 cents

Fare per Hour.

Coaches or Four Wheeled Cabs, or corresponding winter vehicles, drawn by two horses, for the first hour \$1. For each subsequent hour 75 cents, and *pro rata* for intermediate quarters of an hour.

Cabs, two or four wheeled, or corresponding winter vehicles, drawn by one horse. For one or two persons, for the first hour 50 cents, and for each subsequent hour 40 cts. For 3 or 4 persons, for the first hour 75 cts., each subsequent hour 50 cts., and *pro rata* for intermediate quarters of an hour.

Usual charges for two horse carriages to go around the Mountain distance 9 miles. \$4 for 1 or 4 persons.

For Cab, \$1.50 for 2 or 3 persons; for 4 persons, \$2.

Established, 1838.

BANK

C O M

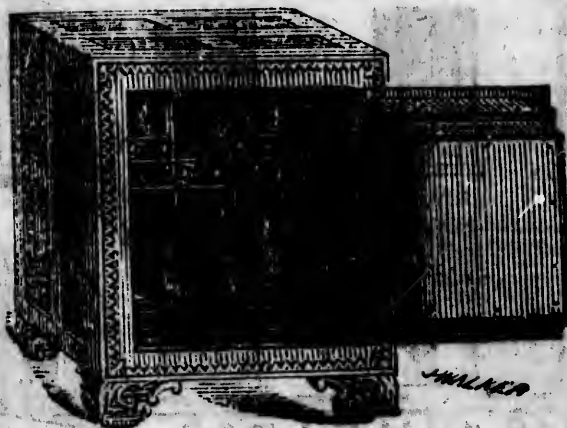
MAN

139, 14

Agents for
OFFICE

KERSHAW & EDWARDS,
 MANUFACTURERS OF
KERSHAW'S CELEBRATED
FIRE AND BURGLAR PROOF
SAFES.

Established, 1838.



Established, 1838.

BANK VAULTS AND DOORS,
 Vault Doors, Shutters,
COMBINATION LOCKS,
 And all kinds of

Fire and Thief Proof Safes.

—ooo—
MANUFACTORIES AND WAREROOMS:

BOSTON, UNITED STATES.

139, 141 & 143 St. Francois Xavier St.,

MONTREAL.

*Agents for the Province for the SERMON, STUDY and
 OFFICE LAMP, See American House Reading Rooms.*

68 & 152 MCGILL STREET, MONTREAL.



Country Orders executed with Despatch.

Wholesale Clothing and Outfitting Establishment.

ED

PH

14

M

Por

EDWIN R. TURNER, PHOTOGRAPHER,

(FROM NOTMAN'S,)

149 Great St. James Street,

OPPOSITE THE OTTAWA HOTEL,

MONTREAL.

Portraits copied and enlarged to any size.

A choice assortment of City Views

Wholesale Clothing and Outfitting Establishment,

O'HEIR'S
WHOLESALE
CLOTHING
&
OUTFITTING
WAREHOUSE
68.


atch.

GEORGE HORNE,

Wholesale and Retail

STATIONER,**Account Book Manufacturer,****PRINT SELLER AND PICTURE FRAME MAKER***52 & 54 St. François Xavier Street,***MONTREAL.**

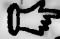
Always on hand, a large stock of Miscellaneous and Fancy Stationery, Twines, Mouldings for Picture Frames, Office requisites &c.

 National School Books, Wholesale only at Publisher's prices.

CITY OF QUEBEC.

Quebec by its historic fame and its unequalled Scenery, is no ordinary or common-place city, for though like other large communities it carries on trade, commerce, and manufactures; cultivates arts, science, and literature; abounds in charities, and professes special regard to the amenities of social life, it claims particular attention as being a strikingly unique old place, the stronghold of Canada, and, in fact the key of the Province. Viewed from any one of its approaches, it impresses the stranger with the conviction of strength and permanency. The reader of American history on entering its gates, or wandering over its squares, ramparts and battle-fields, puts himself at once in communion with the illustrious

**FIRST C****WI**

This
Thous
resort
and p

&c., &
Ne
Am
and
Train
every

E,
E R,
urer,
E MAKER
Street,

Miscel-
s, Mould-
sites &c.
Wholesale

unequal-
on-place
munities
manufac-
terature;
ecial re-
t claims
gly uni-
da, and,
ved from
sses the
gth and
a history
over its
ts him-
lustrious



FIRST CLASS GOODS ADAPTED TO RETAIL.

WILSON HOUSE, **BROCKVILLE, C.W.**

This House owing to its contiguity to the Thousand Islands, makes it an agreeable resort and Headquarters for Fishing, Shooting and pleasure parties visiting them.

☞ Comfortable Boats, Guides, Tackle, &c., &c., available at all times.

New Billiard Tables in the House.

American and Royal Mail Steamers up and down stop daily at Brockville; and Trains by G.T. and B. & O. Railways arrive every morning and evening.

R. G. HARVEY *Proprietor,*

dead. The achievements of daring mariners, the labours of self-sacrificing missionaries of the cross, the conflicts of military heroes, who fell and died in the assault and defence of the city, are here re-read with ten-fold interest. To the lover of nature in her sublime and most rugged, as in her gentle and peaceful forms, will find in and around it a succession of sublime and beautiful objects. The man of science too may be equally gratified, for here the great forces of nature and her operations may be studied with advantage. Quebec can never be a tame or insipid place, and with moderate opportunities for advancement, it must become one of the greatest cities of the new world in respect of learning, arts, commerce and manufactures.

The city of Quebec was founded by SAMUEL CHAMPLAIN, 1608. In 1622 the population was reduced to fifty souls.

In 1629, SIR DAVID KEITH, in the employ of the British Crown, sailed up the St. Lawrence and made the conquest of Quebec. The treaty of St. Germain concluded soon after, restored to France Quebec and her other American possessions.

In June, 1759, the English army under Gen. WOLFE landed upon the Island of Orleans. On the 12th September took place the celebrated battle of the Plains of Abraham, which resulted in the death of Wolfe, and the defeat of the French army. A force of 5,000 English troops under Gen. Murray were left to garrison the fort.

The city is very interesting to a stranger, it is the only walled city in Canada, and one

JO

CH

Paris

13

Have

10

Order

mariners,
ionaries of
ry heroes,
and defence
k ten-fold
re in her
gentle and
around it
il objects.
ally grati-
re and her
advantage.
pid place,
advance-
atest cities
ning, arts,

by SAMUEL
lation was
employ of
Lawrence
The treaty
restored
American

nder Gen.
ans. On
celebrated
ch result-
eat of the
sh troops
n the fort
stranger,
and one

JOHN PATTON & CO.

IMPORTERS OF

CHINA, GLASS,

AND

EARTHENWARE.

Barian Ware and French Porcelain,

135 Great St. James Street,

(Opposite Ottawa Hotel),

MONTREAL:

Have always on hand a good assortment of
the above goods.

Prices low and terms reasonable.

Orders for the Country safely packed and
promptly executed.

feels on passing the gateways and being shut in by the ponderous gates, as though he were entering some sort of prison. There are five of these gates.

Cape Diamond upon which the citadel stands is three hundred and forty-five feet in height, and derives its name from the quantity of crystal mixed with the granite below its surface. The fortress includes the whole space on the cape.

Above the spot where General Montgomery was killed is now the inclined plane, running to the top of the bank; it is five hundred feet long, and is used by the Government to convey stores and other articles of great weight to the fortress. Strangers are allowed to enter this fortress by procuring tickets from the proper authorities.

A ride to the plains of Abraham is one of the most interesting visits about this celebrated city; a rock is there pointed out as the spot where General Wolfe expired. There are four martello towers, forty feet in height, standing upon the plain, about half a mile in advance of the other fortifications.

Seven miles below Quebec is the fall of Montmorenci. The road is very pleasant, passing through the French village of Beauport. Those who expect to see a second Niagara will be very much disappointed. The stream descends in silvery threads, over a precipice two hundred and forty feet in height and in connection with the surrounding scenery is, extremely picturesque and beautiful, but inspires none of the awe felt at Niagara.

Life

Invest

This is
in that
applied
holder
JOYME
TIME
Addition

LARGE

**A prov
amon**

Without
yond t
original
for the

Canada

David T
George
Alexan
The Ho
Thos. K
Peter B

Medi

Inspect

Life Association of Scotland.

Invested Funds upwards of One Million Pounds Sterling.

This Institution differs from other Life Offices in that the **BONUSES FROM PROFITS** are applied on a special system for the policy-holders **PERSONAL BENEFIT** and **ENJOYMENT DURING HIS OWN LIFE-TIME**, with the option of **Large Bonus Additions to the Sum Assured.**

The Policy-holder thus obtains a

LARGE REDUCTION OF PRESENT OUTLAY,

OR

A provision for old Age of a most important amount in one Cash Payment, or a Life Annuity,

Without any expense or outlay whatever beyond the ordinary Assurance Premium for the original Sum Assured, which remains intact for the Policy-holder's heirs, or other purposes.

Canada.-Montreal,-Place d'Armes.

DIRECTORS.

David Torrance, Esq., (D. Torrance & Co.)

George Moffatt, Esq., [Gillespie, Moffatt & Co.]

Alexander Morris, Esq., M.P., Barrister.

The Hon. G. E. Cartier, M.P., Minister of Militia.

Thos. Kirby, Esq., Banker.

Peter Redpath, Esq., [J. Redpath & Son.]

Medical Officer,—R. Palmer Howard, Esq., M.D.

Secretary,—P. WARDLAW.

Inspector of Agencies,—JAMES B. M. CHIPMAN.

The French Catholic Church is a spacious stone building, and the interior is decorated with some fine paintings. Since the destruction of the convent at Charlestown, Mass., Americans are not allowed entrance to the Ursuline Convent. It is the more to be regretted from the fact that the grave of Montcalm is in their chapel.

Castle St. Louis, probably the first public building in Quebec, the corner stone of which was laid by Champlain on the 6th of May, 1624, was destroyed by fire on the 23rd of January, 1834. By the orders of Lord Durham, the site of this castle was cleared of the ruins that covered it, levelled and covered with wood and an iron railing placed on the edge of the precipice, making a very delightful promenade. The view from it commands the lower town, the St. Lawrence as far down as the Island of Orleans, the harbor with its ships, and Point Levi on the opposite side of the river.

COMMERCIAL HOTEL, CORNWALL, C.W.

Omnibus to and from all Boats and Trains.

H. S. HEPBURN,

Proprietor.

800

AI

17 &

H

\$25

Lad

BOO

Partie
and Str
well to
everythi

Very

Wholes

BOOTS! BOOTS! BOOTS!

ALEX. DOUGLAS,

417 & 419 NOTRE DAME STREET,

Has on hand and in process of
Manufacture, over

\$25,000 WORTH OF

Ladies, Gents and Children's

BOOTS & SHOES.

Parties in want of a GOOD ARTICLE
and Strangers visiting the City, would do
well to give me a call, as they will find
everything in stock of the

**Very best Material and Work-
manship.**

Wholesale Orders punctually attended to.

OTTAWA.

The City of Ottawa is situated on the river of the same name nearly 90 miles above the confluence with the St. Lawrence. The Rideau Canal, divides the City into the Upper and Lower towns, and admits of uninterrupted internal communication between Kingston on Lake Ontario and the Ottawa River. It is well laid out with wide streets and has been selected by the Queen for the permanent seat of the Canadian Legislature. The scenery in the vicinity is not to be surpassed by any City in America. Besides the Rideau Canal, Ottawa is connected by the Ottawa and Prescott Railroad which taps the Grand Trunk at Prescott and also a line of steamers run daily up and down the river during the summer months.

The Russel House is situated in Centre Town, in direct juxtaposition with the Sapper's Bridge, the Rideau Canal, Parliament Buildings, Post Office, Custom House, City Hall and News Room. Five minutes drive takes the Tourist to Suspension Bridge from which and the adjoining Mills, different views may be obtained of the celebrated Chaudiere Falls second only to those of Niagara in imposing grandeur.

The Parliament and Department buildings, Government Timber Slides, Table Rock, Suspension Bridge, &c., are objects well worthy a visit.

CA

36

PICTU

IN

M

W. SCOTT,
CARVER & GILDER,

363 Notre Dame Street,

MONTREAL.

EVERY DESCRIPTION OF
PICTURE FRAMES AND MIRRORS

**MADE TO ORDER
 IN THE NEWEST STYLES,**

AND AT
MODERATE RATES.

LINTON & COOPER,

Manufacturers and Wholesale Dealers in

BOOTS & SHOES

524, 526 & 528

ST. PAUL STREET,

MONTREAL.


GREENE & SONS,

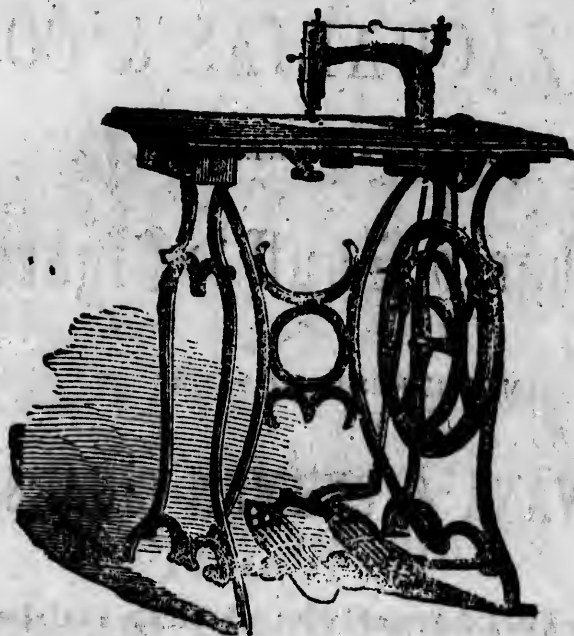
HAT AND FUR

MANUFACTURERS,

517, 519, 521 St. Paul Street,

MONTREAL.

 **WHOLESALE ONLY.**



THE ORIGINAL
"W E E D S"
 LOCK STITCH SHUTTLE
 SEWING MACHINES

For Family and Manufacturing.

G. H. KENDALL, Gen. Agent.

Office: 65 St. Sulpice Street,
 MONTREAL.

M. ZACHARIAS & CO.,

MANUFACTURERS OF

Tobacco, Snuff & Cigars,

IMPORTERS & DEALERS IN

HAVANA & GERMAN CIGARS,

**Meerschaum, Briar, India rubber
and Fancy Clay Pipes,**

SNUFF BOXES.

INDIA RUBBER POUCHES, &c.,

217 & 219 NOTRE DAME ST.,

CORNER ST. GABRIEL ST.,

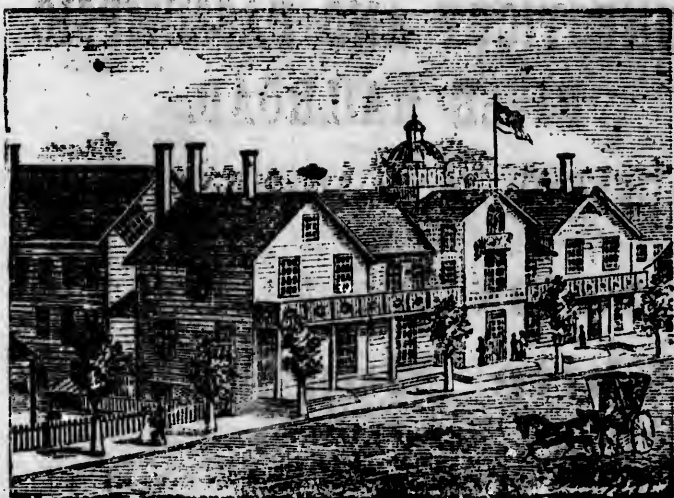
MONTREAL.



W

Carr





**WATERLOO HOTEL,
WATERLOO, C. E.**

E. S. REYNOLDS,

Proprietor.

Carriages always in attendance at the
trains free of charge. Also

A GOOD LIVERY STABLE

Attached under the superintendence of

MR. H. BACON,

Formerly of Stanbridge, P.Q.

CONNECTICUT AND PASSUMPSIC RIVER RAILROAD.

SHORTEST AND BEST ROUTE
FROM

MONTREAL TO

White Mountains,

VIA

LAKE MEMPHREMAGOG, NEWPORT,
WATERLOO AND ST. JOHNS,
Over the S. S. & C. R. R.

Cars leave Newport every morning connecting at Wells River, with trains by White Mountains Railroad for Littleton, from thence by Stage to Profile House, Franconia Mountains and Crawford House, White Mountains.

THEATRE ROYAL,

COTE STREET.

LESSEE - - MR. J. W. BUCKLAND.

Open every night with a Splendid Company
and Popular Stars.

MEMPHREMACOG HOUSE, NEWPORT, VERMONT.

BUCK & PENDAR. - PROPRIETORS.

This House, which ranks among the first-class Hotels in New England, is situated at the head of

Lake Memphremagog,

Where the Water and Mountain Scenery cannot be surpassed.

LAKE MEMPHREMAGOG.

The favorite SUMMER ROUTE from
*Montreal to the White Mountains, Boston,
 New York, and all points South is
 Via Lake Memphremagog.*

The Lake Memphremagog Navigation Co.'s
 splendid new Steamer

"LADY OF THE LAKE,"

Capt. W. D. Handyside, built expressly for the passenger service on this Lake, makes two trips daily during the season of Summer Travel, and connects with the Connecticut and Passumpsic River Railroad at Newport for White Mountains, Boston, New York, and all points South; also by Stages for the Grand Trunk Railway at Sherbrooke, and the Stanstead, Shefford & Chambly Railway at Waterloo for Montreal, Quebec, and all points north.

Through Tickets from Montreal to Lake Memphremagog, White Mountains, Boston and New York, will be issued during the season of 1868.

W. F. RAMSAY,

Magog.

Agent. L. M. N. Co.

VICTORIA SPRING COMPANY, FRELIGHSBURG, P.Q.

PRESIDENT—J. CHAMBERLIN, M.D.,
(President College Physicians and
Surgeons, Quebec,) Frelighsburg.

VICE PRESIDENT—J. S. BRIGHAM, M.D.,
and M.L.A., Philipsburg.

SECY.-TREAS.—E. H. GOFF, Esq.,
Frelighsburg.

DIRECTORS—O. B. Kemp, Esq., Frelighsburg.
Wm. M. Pattison, Esq. do
N. A. Smith, M.D., do
S. R. Whitman, Esq. do
C. S. Browne, Esq., Montreal.
N. S. Whitney, Esq., do

This Celebrated Spring

is rapidly gaining in Public estimation, and
the efficacy of its water in the

**Cure of Cancer, Scrofula, Skin
Diseases & many other disorders**

Has already won for it an unrivalled
reputation.

JAMES BAYLIS,

Importer of

Carpets, Druggets,

DOOR MATS, HEARTH RUGS, &c.

AND

FLOOR OIL CLOTHS,

IN EVERY WIDTH AND STYLE.

Offers to his Friends and the Public, advantages in the purchase of the above, unsurpassed by any other house in the Province.

—o—

MONTREAL:

No. 74 Great St. James Street,

Three Doors East of the Ottawa Hotel.

TORONTO:

No. 3 King Street, East,

South side of King, Two Doors East of
Yonge Street,

T
NIAGA
Lake O

NIAG
FALL

Toronto
Kingston
Brockville
Prescott
Montreal
Richmond
Quebec
Gorham
Portland
Boston

NIAGA
BEC

NIAG
FALL

Toronto
Kingston
Prescott
Montreal
Quebec

NIAGA
V

NI
FA

Lewis
Ogden
Rou
Plat
Bur
Tico
Wh
San
Sar

TABLES OF DISTANCES.

NIAGARA FALLS TO BOSTON.—*Via Quebec, by Lake Ontario and River St. Lawrence and Grand Trunk Railway.*

NIAGARA FALLS TO	Inter mediate.	Total.	BOSTON.	Inter mediate.	Total.
Toronto.....	84	84	Portland.	111	111
Kingston.....	160	244	Gorham, Mt. W	91	202
Brockville....	48	292	Quebec.	221	423
Prescott & Og.	12	301	Richmond	96	519
Montreal:	112	416	Montreal	72	591
Richmond	72	488	Prescott & Ogd.	142	703
Quebec	96	584	Brockville	12	715
Gorham, Mt. W	221	805	Kingston.....	48	763
Portland.....	91	896	Toronto	160	923
Boston.	111	1007	Niagara Falls.	84	1007

NIAGARA FALLS TO MONTREAL AND QUEBEC.—*Via Lake Ontario and River St. Lawrence.*

NIAGARA FALLS TO	Inter mediate.	Total.	QUEBEC TO	Inter mediate.	Total.
Toronto.....	84	84	Montreal	180	180
Kingston	160	244	Prescott	140	320
Prescott	70	314	Kingston	70	390
Montreal.	140	454	Toronto.	160	550
Quebec	180	634	Niagara Falls.	84	634

NIAGARA FALLS TO SARATOGA SPRINGS.—
Via Lake Ontario and River St. Lawrence, Northern Railroads and Lake Champlain.

NIAGARA FALLS TO	Inter mediate.	Total.	SARATOGA TO	Inter mediate.	Total.
Lewiston.	6	6	Sandy Hill....	10	10
Ogdensburgh..	298	304	Whitehall	15	25
Rouse's Point.	118	422	Ticonderoga ..	23	48
Plattsburgh ..	20	442	Burlington....	40	88
Burlington....	18	460	Plattsburg ...	18	106
Ticonderoga ..	40	500	Rouse's Point.	20	126
Whitehall	23	523	Ogdensburgh..	118	244
Sandy Hill....	15	538	Lewiston.....	293	542
Saratoga Sp ..	10	548	Niagara Falls.	6	548


J. A. RAFTER,
MERCHANT TAILOR,
Gentlemen's Haberdasher,

AND IMPORTER OF

CLOTHS, TWEEDS, CASSIMERES,
FANCY & STAPLE DRY GOODS.

A full stock of Gentlemen's
READY-MADE SUITS
Always on hand.

*(In the Merchant Tailoring Department
Special Cutters are engaged for
American Customers.)*

 **ORDERED SUITS WILL BE
COMPLETED WITHIN 12 HOURS
WHEN REQUIRED.**

THE MART,
31 ST. LAWRENCE STREET.

