

SPAM 9760

NEW WESTMINSTER

British Columbia
CANADA



A SALMON CANAL

THE METROPOLIS OF THE FAMOUS FRASER VALLEY



PROVINCIAL EXHIBITION AND LACROSSE GROUNDS





CATHEDRALS
and CHURCHES



THE LUMBERING INDUSTRY



COURT HOUSE



COLUMBIA ST. EAST.



DOMINION TRUST CO. BLDG



QUEENS PARK



CITY MARKET



LORD KELVIN
SCHOOL



COLUMBIA ST. WEST.



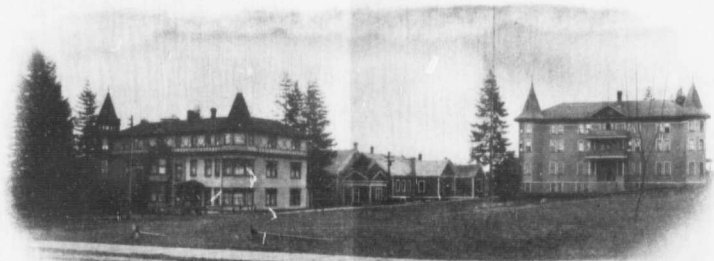
ROYAL COLUMBIAN
HOSPITAL



DISTRICT EXHIBIT IN BOARD OF TRADE.



HIGH SCHOOL.



COLUMBIAN COLLEGE

NEW WESTMINSTER, B. C.

ON THE FRASER RIVER

Founded half a century ago, the city was completely destroyed by fire in September, 1898. To-day it rises a City Beautiful, tier above tier, on a southern slope, overlooking the magnificent Fresh-water Harbor, formed by the beautiful Fraser River, which here divides into two branches, some twelve miles from the salt water of the Pacific Ocean.

Nature has provided a site of wondrous beauty, and from almost any point of view are to be seen tree-clad heights, mountain peaks, the silvery sheen of the mighty river, and the glaciers of Mount Baker some eighty miles distant. The picture as viewed from the plateau of the hill-slope on which the city is built, shows a City of Homes—not mere streets of houses—each standing amidst gardens of flowers, where cherry, pear, and apples are interspersed with lilac, laburnum, rhododendrons, magnificent roses, and other flowering trees and shrubs in endless variety, from April to December. Parks, churches, magnificent public schools and colleges, Government Buildings, five fire-halls and seventy varied industries are included within the range of vision.

NEW WESTMINSTER AND AGRICULTURE.

Far famed as is the Okanagan Valley, that of the Fraser is destined to eclipse that great fruit-growing district. Nowhere else in Canada are larger crops of roots, vegetables, hay, oats, or fruits obtainable; and this without the numerous difficulties of irrigation. New Westminster, with its weekly market, is the agricultural centre for a district approximately 100 miles long by 30 broad, whence is brought farm produce, large and small fruits, grain, poultry, cattle, horses, butter, eggs, and vegetables of a size and quality that can scarcely be equalled elsewhere.

The supply, however, is insufficient to meet the demands of the two cities of Westminster and Vancouver—the land is there but needs settlers and cultivation.

The climate is excellent, the sun is bright, rain is sufficient, and the winter lasts only about as many weeks as it continues for months in the Interior and Eastern Canada. The land throughout the entire valley is rich in humus, and, therefore, produces the richest hay grasses, the largest potatoes, the sleekest cattle, and the most delicious fruits; these ripen in the open, and the farm buildings bespeak both comfort and prosperity.

NEW WESTMINSTER INDUSTRIES.

Few cities of 16,000 people can compare with this—the Royal City—for industrial development. Here is the largest lumber mill in the world, the greatest machine works, and the only railway car-building shops in Western Canada; also one of the largest cold-storage plants, giant lumber mills, sash and door factories, shingle mills, and numerous other plants for manufacturing the timber floated from the surrounding districts. Iron-works, shipyards, boiler-works, steel and wood pipe industries, box factories, and similar establishments give employment to hundreds of men; whilst the thirty-nine fish canneries on the Fraser, during the Salmon season add largely to the wage-earning opportunities of the citizens. There are many other industries such as cigar factories, mineral water works, paper mill, tannery, brewery, a very large distillery, oatmeal mill, wire factory, etc., in addition to numerous wholesale and retail establishments, importing, or manufacturing all the necessaries and luxuries of modern civilization.

Industrial development demands railway facilities; the Canadian Pacific provides this from the Atlantic; the Great Northern from all parts of the United States; and the 170 miles of the British Columbia Electric Railway radiate in every direction.

NEW WESTMINSTER—FEATURES

The city owns the water and electric-light systems, also the river-frontage. All civic works, particularly its sanitation, are of the most approved character.

The streets are broad and clean; the main thoroughfares, especially, are unexcelled for brilliancy of lighting.

Educational facilities of the highest order exist.

There are seven banks—Montreal, Commerce, Royal, Northern Crown, Merchants, Toronto, Vancouver.

Twenty fraternal societies have lodges here.

The tourist, artist, or sportsman can find no better centre, or accommodation.

New Westminister is the only Fresh Water Port on the Canadian Pacific Coast.

Port Mann (4000 acres), the new Pacific terminal of the Canadian Northern railway is one and one-half miles Southeast.

The Canadian Pacific Railway yards (new), are six miles east.

Two of Canada's largest steel works will be erected close to the city this year.

No other city possesses greater Opportunities or Prospects.

Come and see New Westminister!

STAMP
HERE.

WITH THE COMPLIMENTS OF

C. H. STUART WADE

PUBLICITY COMMISSIONER

CITY HALL

NEW WESTMINSTER, BRITISH COLUMBIA