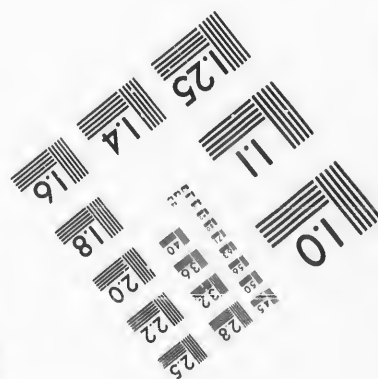
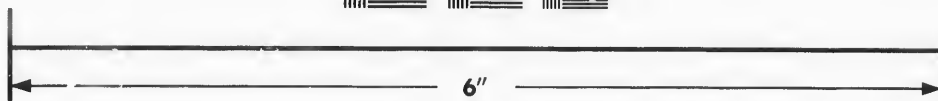
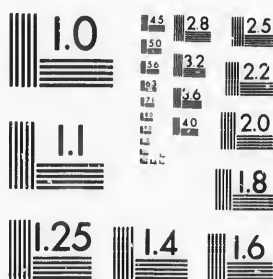


IMAGE EVALUATION TEST TARGET (MT-3)



Photographic
Sciences
Corporation

23 WEST MAIN STREET
WEBSTER, N.Y. 14580
(716) 872-4503

**CIHM/ICMH
Microfiche
Series.**

**CIHM/ICMH
Collection de
microfiches.**



Canadian Institute for Historical Microreproductions / Institut canadien de microreproductions historiques

© 1987

Technical and Bibliographic Notes/Notes techniques et bibliographiques

The Institute has attempted to obtain the best original copy available for filming. Features of this copy which may be bibliographically unique, which may alter any of the images in the reproduction, or which may significantly change the usual method of filming, are checked below.

- ☐ Coloured covers/
Couverture de couleur
- ☐ Covers damaged/
Couverture endommagée
- ☐ Covers restored and/or laminated/
Couverture restaurée et/ou pelliculée
- ☐ Cover title missing/
Le titre de couverture manque
- ☐ Coloured maps/
Cartes géographiques en couleur
- ☐ Coloured ink (i.e. other than blue or black)/
Encre de couleur (i.e. autre que bleue ou noire)
- ☐ Coloured plates and/or illustrations/
Planches et/ou illustrations en couleur
- ☐ Bound with other material/
Relié avec d'autres documents
- ☐ Tight binding may cause shadows or distortion
along interior margin/
La reliure serrée peut causer de l'ombre ou de la
distorsion le long de la marge intérieure
- ☐ Blank leaves added during restoration may
appear within the text. Whenever possible, these
have been omitted from filming/
Il se peut que certaines pages blanches ajoutées
lors d'une restauration apparaissent dans le texte,
mais, lorsque cela était possible, ces pages n'ont
pas été filmées.
- ☐ Additional comments:/
Commentaires supplémentaires:

L'Institut a microfilmé le meilleur exemplaire qu'il lui a été possible de se procurer. Les détails de cet exemplaire qui sont peut-être uniques du point de vue bibliographique, qui peuvent modifier une image reproduite, ou qui peuvent exiger une modification dans la méthode normale de filmage sont indiqués ci-dessous.

- ☐ Coloured pages/
Pages de couleur
- ☐ Pages damaged/
Pages endommagées
- ☐ Pages restored and/or laminated/
Pages restaurées et/ou pelliculées
- ☒ Pages discoloured, stained or foxed/
Pages décolorées, tachetées ou piquées
- ☒ Pages detached/
Pages détachées
- ☒ Showthrough/
Transparence
- ☐ Quality of print varies/
Qualité inégale de l'impression
- ☐ Includes supplementary material/
Comprend du matériel supplémentaire
- ☐ Only edition available/
Seule édition disponible
- ☐ Pages wholly or partially obscured by errata
slips, tissues, etc., have been refilmed to
ensure the best possible image/
Les pages totalement ou partiellement
obscurcies par un feuillet d'errata, une pelure,
etc., ont été filmées à nouveau de façon à
obtenir la meilleure image possible.

This item is filmed at the reduction ratio checked below/
Ce document est filmé au taux de réduction indiqué ci-dessous.

10X	12X	14X	16X	18X	20X	22X	24X	26X	28X	30X	32X
						✓					

The copy filmed here has been reproduced thanks to the generosity of:

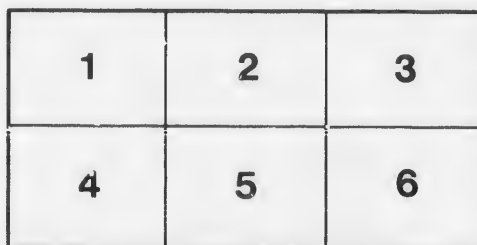
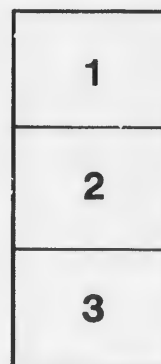
The Nova Scotia
Legislative Library

The images appearing here are the best quality possible considering the condition and legibility of the original copy and in keeping with the filming contract specifications.

Original copies in printed paper covers are filmed beginning with the front cover and ending on the last page with a printed or illustrated impression, or the back cover when appropriate. All other original copies are filmed beginning on the first page with a printed or illustrated impression, and ending on the last page with a printed or illustrated impression.

The last recorded frame on each microfiche shall contain the symbol ➡ (meaning "CONTINUED"), or the symbol ▼ (meaning "END"), whichever applies.

Maps, plates, charts, etc., may be filmed at different reduction ratios. Those too large to be entirely included in one exposure are filmed beginning in the upper left hand corner, left to right and top to bottom, as many frames as required. The following diagrams illustrate the method:



L'exemplaire filmé fut reproduit grâce à la générosité de:

The Nova Scotia
Legislative Library

Les images suivantes ont été reproduites avec le plus grand soin, compte tenu de la condition et de la netteté de l'exemplaire filmé, et en conformité avec les conditions du contrat de filmage.

Les exemplaires originaux dont la couverture en papier est imprimée sont filmés en commençant par le premier plat et en terminant soit par la dernière page qui comporte une empreinte d'impression ou d'illustration, soit par le second plat, selon le cas. Tous les autres exemplaires originaux sont filmés en commençant par la première page qui comporte une empreinte d'impression ou d'illustration et en terminant par la dernière page qui comporte une telle empreinte.

Un des symboles suivants apparaîtra sur la dernière image de chaque microfiche, selon le cas: le symbole ➡ signifie "A SUIVRE", le symbole ▼ signifie "FIN".

Les cartes, planches, tableaux, etc., peuvent être filmés à des taux de réduction différents. Lorsque le document est trop grand pour être reproduit en un seul cliché, il est filmé à partir de l'angle supérieur gauche, de gauche à droite, et de haut en bas, en prenant le nombre d'images nécessaire. Les diagrammes suivants illustrent la méthode.

RULES

OF THE

HALIFAX MECHANICS' INSTITUTE.



PRINTED AT THE NOVASCOTIAN OFFICE.

1832.

NS

374.2

++

2788

RULES.



1. That the attention of the Institute shall be directed to the accumulation of models and specimens,—the introduction of such mechanical improvements as have been discovered in other countries,—the diffusion of the knowledge of such as shall be invented here—and the procuring Lectures on scientific or other subjects.
2. That the Officers of the Institute, be a President, two Vice-Presidents, Treasurer, Secretary, Curator of Models, and a Committee of nine persons.
3. That the Society shall meet one evening in every week during the Session.
4. That two shillings and six pence shall be paid by the Members quarterly, which members must be Shareholders or Subscribers of the Mechanics' Library Association.
5. That the Officers of the Institute be ex-officio members of the Committee—the Chair to be taken according to precedence of office.
6. That the Curator may procure models and plans for Lecturers at his discretion, which shall be paid for from the funds of the Institute ; such expense not to exceed one Pound for any one Lecture, except a further expenditure be first sanctioned by a vote of the Committee. Models and plans so procured shall be the property of the Institute.
7. That at weekly meetings the Chair shall be taken at eight o'clock, the door shall be closed at 10 minutes past eight, and continue closed, at the discretion of the presiding member, until the termination of the Lecture.

8. That at the conclusion of a Lecture, questions may be asked, or further information imparted, respecting the subject of the evening.

9. That discussions shall be adjourned at 10 o'clock, except the Chairman see reason to continue them.

10. That discussions are not intended to introduce criticisms on Lectures, but as means of obtaining or imparting information in an amicable manner.

11. That it shall be incumbent on the Chairman to preserve order, and to confine discussions to the subject of the Lecture.

12. That at the conclusion of discussions on Lectures, other matters relative to the Institute may be introduced, by making a written proposition to the Chairman; such matters not to be decided on before the next weekly meeting following their introduction.

13. That no Lecture shall be delivered, without its subject having been submitted to the Committee three weeks previously; except in cases of exigence, when the President or other Officers may decide agreeably to the other rules of the Institute.

14. That all approach to discussions on party or domestic politics, or on controverted religious topics, shall be altogether prohibited; and that it shall be incumbent on the Chairman to exclude those subjects, and that his prerogative shall not authorize him in any way to suspend the provisions of this rule.

15. That every person delivering his sentiments—except in a Lecture—shall address the Chairman.

16. That if a person conduct himself disorderly during a meeting, the Chairman may cause him to be expelled from the room, or may refer the case to the Committee, who shall have power to suspend or abolish the privileges of the offending party, as the case may require.

17. That the Chair, at weekly meetings, shall be taken by the President, or, according to the precedence of other officers.

18. That each member shall have the privilege of admitting one other person, a non-resident, each lecture night. Persons who have not, at the time of admission, resided on the Peninsula of Halifax three months successively, shall be deemed non-residents. Members procuring admission, under this rule, for any beside non-residents, shall be subject to censure, and shall forfeit this privilege for six months.

19. That the Chairman shall invite visitors to take part in discussions.

20. That a Lecturer for the evening may introduce six friends to the Lecture room.

21. That the Lectures of the Institute shall be open to the members of the House of Assembly.

22. That all members who join in the first half of a quarter, shall be charged from the commencement of the same; those who join during the last half, to commence with next following quarter.

23. That a donation of £5, shall constitute the donor an Honorary Member of the Institute—of which sum, £2 shall belong to the Mechanics' Library Association, to constitute the donor an honorary member of the same.

24. That each member may hold a transferable ticket for junior members of his family, for which he shall pay 5s. annually; these tickets to admit one person each, to Lectures.

25. That regular members only shall have a vote in the Institute.

26. That on first and last evenings of a Session, each member may introduce two persons to the lecture room.

27. That an annual meeting shall be held on the last Wednesday in December, for the election of Officers and Committee; Election shall be by ballot.

