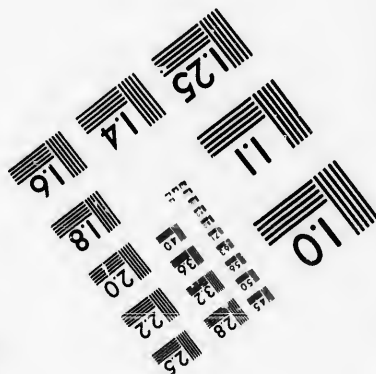
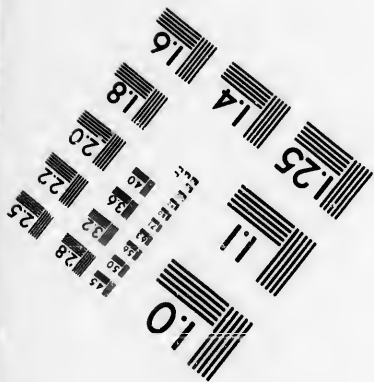
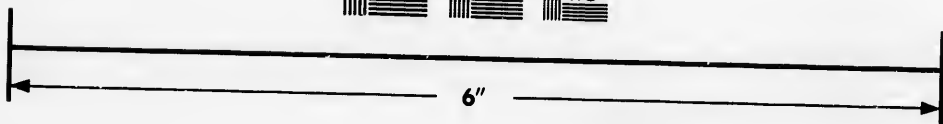
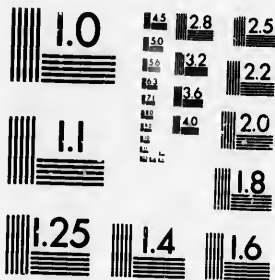


**IMAGE EVALUATION
TEST TARGET (MT-3)**



**Photographic
Sciences
Corporation**

23 WEST MAIN STREET
WEBSTER, N.Y. 14580
(716) 872-4503



**CIHM/ICMH
Microfiche
Series.**

**CIHM/ICMH
Collection de
microfiches.**



Canadian Institute for Historical Microreproductions / Institut canadien de microreproductions historiques



© 1986

Technical and Bibliographic Notes/Notes techniques et bibliographiques

The Institute has attempted to obtain the best original copy available for filming. Features of this copy which may be bibliographically unique, which may alter any of the images in the reproduction, or which may significantly change the usual method of filming, are checked below.

L'Institut a microfilmé le meilleur exemplaire qu'il lui a été possible de se procurer. Les détails de cet exemplaire qui sont peut-être uniques du point de vue bibliographique, qui peuvent modifier une image reproduite, ou qui peuvent exiger une modification dans la méthode normale de filmage sont indiqués ci-dessous.

- | | |
|--|--|
| <input type="checkbox"/> Coloured covers/
Couverture de couleur | <input checked="" type="checkbox"/> Coloured pages/
Pages de couleur |
| <input type="checkbox"/> Covers damaged/
Couverture endommagée | <input type="checkbox"/> Pages damaged/
Pages endommagées |
| <input type="checkbox"/> Covers restored and/or laminated/
Couverture restaurée et/ou pelliculée | <input type="checkbox"/> Pages restored and/or laminated/
Pages restaurées et/ou pelliculées |
| <input type="checkbox"/> Cover title missing/
Le titre de couverture manque | <input checked="" type="checkbox"/> Pages discoloured, stained or foxed/
Pages décolorées, tachetées ou piquées |
| <input type="checkbox"/> Coloured maps/
Cartes géographiques en couleur | <input type="checkbox"/> Pages detached/
Pages détachées |
| <input type="checkbox"/> Coloured ink (i.e. other than blue or black)/
Encre de couleur (i.e. autre que bleue ou noire) | <input checked="" type="checkbox"/> Showthrough/
Transparence |
| <input checked="" type="checkbox"/> Coloured plates and/or illustrations/
Planches et/ou illustrations en couleur | <input type="checkbox"/> Quality of print varies/
Qualité inégale de l'impression |
| <input type="checkbox"/> Bound with other material/
Relié avec d'autres documents | <input type="checkbox"/> Includes supplementary material/
Comprend du matériel supplémentaire |
| <input type="checkbox"/> Tight binding may cause shadows or distortion
along interior margin/
La reliure serrée peut causer de l'ombre ou de la
distorsion le long de la marge intérieure | <input type="checkbox"/> Only edition available/
Seule édition disponible |
| <input type="checkbox"/> Blank leaves added during restoration may
appear within the text. Whenever possible, these
have been omitted from filming/
Il se peut que certaines pages blanches ajoutées
lors d'une restauration apparaissent dans le texte,
mais, lorsque cela était possible, ces pages n'ont
pas été filmées. | <input type="checkbox"/> Pages wholly or partially obscured by errata
slips, tissues, etc., have been refilmed to
ensure the best possible image/
Les pages totalement ou partiellement
obscurcies par un feuillet d'errata, une pelure,
etc., ont été filmées à nouveau de façon à
obtenir la meilleure image possible. |
| <input type="checkbox"/> Additional comments:
Commentaires supplémentaires: | |

This item is filmed at the reduction ratio checked below/
Ce document est filmé au taux de réduction indiqué ci-dessous.

10X	12X	14X	16X	18X	20X	22X	24X	26X	28X	30X	32X
								✓			

The copy filmed here has been reproduced thanks to the generosity of:

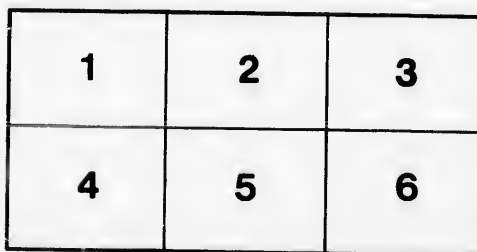
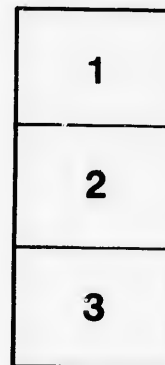
Douglas Library
Queen's University

The images appearing here are the best quality possible considering the condition and legibility of the original copy and in keeping with the filming contract specifications.

Original copies in printed paper covers are filmed beginning with the front cover and ending on the last page with a printed or illustrated impression, or the back cover when appropriate. All other original copies are filmed beginning on the first page with a printed or illustrated impression, and ending on the last page with a printed or illustrated impression.

The last recorded frame on each microfiche shall contain the symbol \rightarrow (meaning "CONTINUED"), or the symbol ∇ (meaning "END"), whichever applies.

Maps, plates, charts, etc., may be filmed at different reduction ratios. Those too large to be entirely included in one exposure are filmed beginning in the upper left hand corner, left to right and top to bottom, as many frames as required. The following diagrams illustrate the method:



L'exemplaire filmé fut reproduit grâce à la générosité de:

Douglas Library
Queen's University

Les images suivantes ont été reproduites avec le plus grand soin, compte tenu de la condition et de la netteté de l'exemplaire filmé, et en conformité avec les conditions du contrat de filmage.

Les exemplaires originaux dont la couverture en papier est imprimée sont filmés en commençant par le premier plat et en terminant soit par la dernière page qui comporte une empreinte d'impression ou d'illustration, soit par le second plat, selon le cas. Tous les autres exemplaires originaux sont filmés en commençant par la première page qui comporte une empreinte d'impression ou d'illustration et en terminant par la dernière page qui comporte une telle empreinte.

Un des symboles suivants apparaîtra sur la dernière image de chaque microfiche, selon le cas: le symbole \rightarrow signifie "A SUIVRE", la symbole ∇ signifie "FIN".

Les cartes, planches, tableaux, etc., peuvent être filmés à des taux de réduction différents. Lorsque le document est trop grand pour être reproduit en un seul cliché, il est filmé à partir de l'angle supérieur gauche, de gauche à droite, et de haut en bas, en prenant le nombre d'images nécessaire. Les diagrammes suivants illustrent la méthode.

not in C.A.

3-

A GENEALOGY
OF THE
Rolph Family
IN CANADA.

FROM
ONTARIAN FAMILIES,

BY
EDWARD MARION CHADWICK.

Toronto:
ROLPH, SMITH & Co.,
1898.

The EDITH *and* LORNE PIERCE
COLLECTION *of* CANADIANA



Queen's University at Kingston

A GENEALOGY
OF THE
Rolph Family
IN CANADA.

FROM
ONTARIAN FAMILIES,

BY
EDWARD MARION CHADWICK.

Toronto:
ROLPH, SMITH & Co.,
1898.

LP
CS90
R64C4

ROLPH.

THE family of Rolph or Rolf has continued from an early period in the neighbourhood of A'mondbury and Thornbury, Co. Gloucester, Eng.

John Rolph, b. 1671, d. 26th Jan. 1757, of Almondsbury, and his wife Elizabeth, b. 1685, d. 15th June 1746, had issue (besides a dau. Elizabeth, bpt. 25th Dec. 1725) a son

George, bpt. 23rd May 1727, d. 30th Aug. 1792; solicitor in Thornbury; m. 1stly, 16th Oct. 1750, Susannah, d. 28th Sept. 1765, aged 41, dau. of Thomas Cox and Elizabeth, his wife; and 2ndly, 31st May 1767, Sarah Clarke, d. Feb. 1823, aged 90; and had issue, viz.:

Of the first marriage:

- 1.—John, b. 11th Sept. 1751, d. 13th Sept. 1760.
- 2.—George, b. 11th Jan. 1757, of whom below.
- 1.—Betty, or Betsy, b. 12th Dec. 1752, d. 17th June 1839, unm.
- 2.—Sarah, b. 24th Dec. 1754, d. 16th March 1828, unm.
- 3.—Susannah, b. 12th Sept. 1759, d. at an advanced age.
- 4.—Amelia, b. 31st Aug. 1762, d. Dec. 1822.
- 5.—Hester, b. 18th May 1765, d. 10th March 1839; m. to Rev. Joseph Hughes.

And of the second marriage:

- 3.—Thomas, b. 29th April 1768, who came to Canada, and of whom below.
- 4.—John, b. 14th Nov. 1771, d. 22nd March, 1772.
- 6.—Ann, b. 21st Jan. 1770, d. 23rd March 1848, m. to Thomas-Wright Lawford, of Elberton, Co. Gloucester.
- 7.—Mary, bpt. 23rd Oct. 1774, d. 15th Oct. 1861, unm.
George, above named, b. 11th Jan. 1757, d. 30th Oct. 1815, m. 1st Jan. 1786, Sarah De la Roche, d. Dec. 1813, aged 46, of Alveston, Co. Gloucester, previously of Jamaica, and had issue, viz.:
- 1.—George, b. 26th June 1789, d. 14th April 1793.
- 2.—William, b. 30th Aug. 1791, of whom below.
- 3.—George, b. 7th May 1793, d. 21st Oct. 1793.

4.—George, b. 8th Oct. 1800, d. April 1841; was Mayor of Thornbury at the time of his death.

1.—Annis, b. 25th July 1794, d. 22nd Jan. 1848, m. 1st May 1816, to Adrian Stokes, of Stanshawe's Court, Yate, Co. Gloucester.

2.—Susannah, b. 20th Dec. 1796, d. Feb. 1797.

3.—Susannah, b. 6th Aug. 1799, d. June 1866, unm.

William, above named, b. 30th Aug. 1791, d. Oct. 1850; m. 1stly, 17th June 1817, Frances Mair, d. Feb. 1833, aged 38, of Iron Acton, Co. Gloucester; and 2ndly, Caroline Maningford, d. Aug. 1870, of Clifton; and had issue, of the first marriage only, viz.:

1.—William-Mair, bpt. 16th March 1818, d. 17th June 1818.

2.—John-Mair, b. 16th April 1820, d. 18th March 1898, a noted Traveller and Entomologist, of Munich, Bavaria; m. in Germany, and had issue, viz.: Mair-Frederick, b. 9th Sept. 1844, m. in Germany, and has one son, William-Mair; William-Henry, b. 26th Aug. 1848, *d.*, of Berlin, Germany, Doctor of Philology, Scientist and Author; Lucy-Adelheid.

3.—William, bpt. 23rd July 1821, d. Nov. 1821.

1.—Julia-Fanny, b. 9th Feb. 1819, m. 13th March 1841, to John White, d. 18th March 1877, Lieut. 20th Madras N.I., afterwards Col. in Staff Corps and Major-General Madras Army, son of Ccl. White, 1st Dragoon Guards.

2.—Emily-Howard, b. 4th July 1823, d. 15th Aug. 1894, m. to Walter Coleridge, d. 5th Jan. 1864, Lieut., afterwards Major, 20th Madras N.I., and had issue, viz.: 1.—Julia-Frances-Shapland, m. to Henry-Ferdinand Oakes, Capt., afterwards Lieut.-Col., 7th Fusiliers, son of Orbell Oakes, Capt. R.N., and had issue, viz.: Amy-Coleridge, m. 5th June 1895, to Durrant-Henry Cooper, son of George Cooper of Kensington, Co. Middlesex; Mabel, m. 14th Oct. 1897, to Frederick-Gillies Payne, son of Sir Salisbury Payne, Bart.; Frances-Edith (Effie). 2.—Josephine-Emily-Sarah, m. to Edward-Coleridge Roberts, Surgeon, of Terlake, Exeter. 3.—Amy-Rolph, d. 6th April 1876. 4.—Frances-Elizabeth-Senior, m. to John-S. Davidge, Surgeon-Major, R.A., now Deputy Surgeon-General, and has issue: Guy-Mortimer-Coleridge; Gladys; Muriel-Annis-Elinor. 5.—

Edith-Mary-Hutchinson, m. to Charles-John Cole, son of Henry-Tilliard Cole, Q.C., of Plymouth, and has issue: Coleridge-Henry-Tilliard; John-Trevor; and another.

Thomas Rolph, above named, b. 29th April 1768, d. 24th March 1814, Surgeon, of Grovesend, near Thornbury; came to Canada about or after 1807, and settled in Charlotteville, Co. Norfolk, in 1810; m. 25th Feb. 1788, Frances Petty, d. Aug. 1829, of St. Mary's, Rotherhithe, Co. Surrey, and had issue, viz.:

1a.—John Romaine, b. 26th July 1789, d. Dec. 1789.

2a.—(Hon.) John, b. 4th March 1793, d. 19th Oct. 1870. Came to Canada in 1812, and settled in Malahide in the Talbot Dist. in 1813. Served in 1812 as Paymaster of Militia in the London District. Returned to England and became a Barrister-at-Law of the Inner Temple, and also M.D., and returning to Canada was called to the Bar at Osgoode Hall in 1821, after which he practised both professions simultaneously. Was a Bencher of the Law Society. Was M. L. A., and in 1835 was a member of the Executive Council. In 1834 he established a School of Medicine in Toronto, subsequently incorporated. He was one of the prominent persons concerned in the Rebellion of 1837, his part in which is matter of general history; he nevertheless was subsequently again M. L. A., and held office in the Administration of Sir Francis Hincks in 1851. M. 30th Oct. 1834, Grace, dau. of George-Henry Haines, of Leicester, Eng., and had issue, viz.:

1b.—George-Widmer, b. 1840, d. inf.

2b.—John-Widmer, b. 1843, Capt. 10th Royal Regt. Act. Mil., M.D., Surgeon Toronto Field Battery, and afterwards N. W. Mounted Police; went to the South Seas, and was Acting Surgeon to the Rajah of Sarawak, and is now Residency Surgeon to the Sultan of Pahang; m. Anne-Racey Murray (see Racey) and has had issue, viz.: Widmer-Murray, d. inf.; Grace-Caroline-Darling, d. unm.

3b.—Thomas-Taylor of Toronto, Major retired from 10th Royal Grenadiers, Barrister-at-Law; m. 2nd July 1879, Elizabeth-Janet, dau. of David-B-Ogden Ford of Brockville, and has issue: John-Hamilton; Nina-Lawrence; Grace-Kearney; Barbara-Frances-Petty.

- 1*b*.—Sarah-Frances, m. to Lyster Hayward, *d.*, son of Alfred Hayward of Port Hope, formerly of Buckingham, Eng., and has had issue, one dau., Marie-Louise.
- 3*a*.—George, b. 7th April 1794, d. 25th July 1875; served in 1812 as Lieut. Norfolk Militia, and was present at the taking of Detroit (medal) and other engagements; Barrister-at-Law, 1821, Bencher of the Law Society, 1835; was Clerk of the Peace for Gore District, and Registrar Surrogate Court; M.L.A.; m. 2nd Aug. 1836, Georgianna, dau. of Capt. Clement, and had issue, viz.:
- 1*b*.—John-Clement, b. 8th Jan. 1838, d. 13th April 1843.
- 2*b*.—Thomas-Lawford, b. 13 Feb. 1840, d. 5th Sept. 1876, solicitor in London, Eng., m. Edith, dau. of Thomas-Charles Renshaw, Q.C. (Lincoln's Inn).
- 3*b*.—William-Mogg, b. 11th July 1842; entered the 17th Regt., now Leicestershire Regt., 1861, and served until he attained the command of the Regt., Col. 1894, subsequently retired, and now holds a staff appointment; m. 10th Sept. 1874, Emily-Stratford, dau. of George-Smyttan Duff and Louisa-Emily Rodney, his wife, and has issue: William-Lawford, b. 27th June 1875; George-William, b. 21st April 1878; Charles-Colwyn, b. 13th May 1888; Louisa-Emily.
- 1*b*.—Ann, m. 31st July 1873, to Allen-Holford Walker, M.D., of Toronto, son of Edward-Allen Walker of Rotherham, Co. York, Eng.
- 2*b*.—Mary-Jenner, d. 20th Nov. 1871, m. 5th Aug. 1869, to Alfred Pope, Solicitor, J.P., sometime Mayor of Dorchester, Co. Dorset, Eng., and has issue, one son, Alfred Rolph, b. 3rd Aug. 1871.
- 3*b*.—Georgianna-Clement of Toronto.
- 4*b*.—Sophia-Elizabeth, m. 10th Oct. 1876, to Charles O'Reilly, M.D., of Toronto, son of Gerald O'Reilly of Hamilton, Co. Wentworth, and grandson of Gerald O'Reilly of Ballinlough, Co. Meath, Ire., and has issue, Brefney-Rolph.
- 4*a*.—Romaine, b. 7th May 1795, d. 22nd Jan. 1868, in Holy Orders, Deacon 10th Oct. 1819, Priest 21st Oct. 1821; was first missionary at Sandwich, Co. Essex, Rector of Amherst-

fred
ng.,

l in
the
nts ;
35 ;
trar
na,

76,
as-

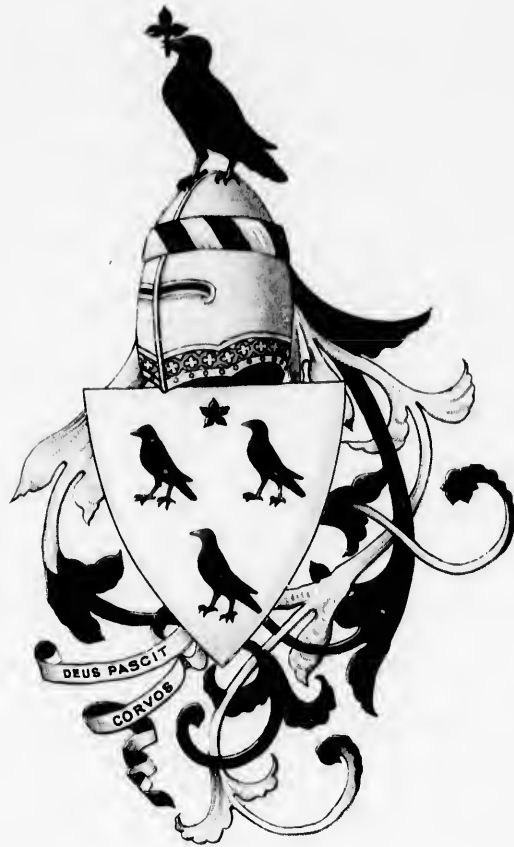
7th
ved
94,
nt-
of
his
ine
es-

er,
of

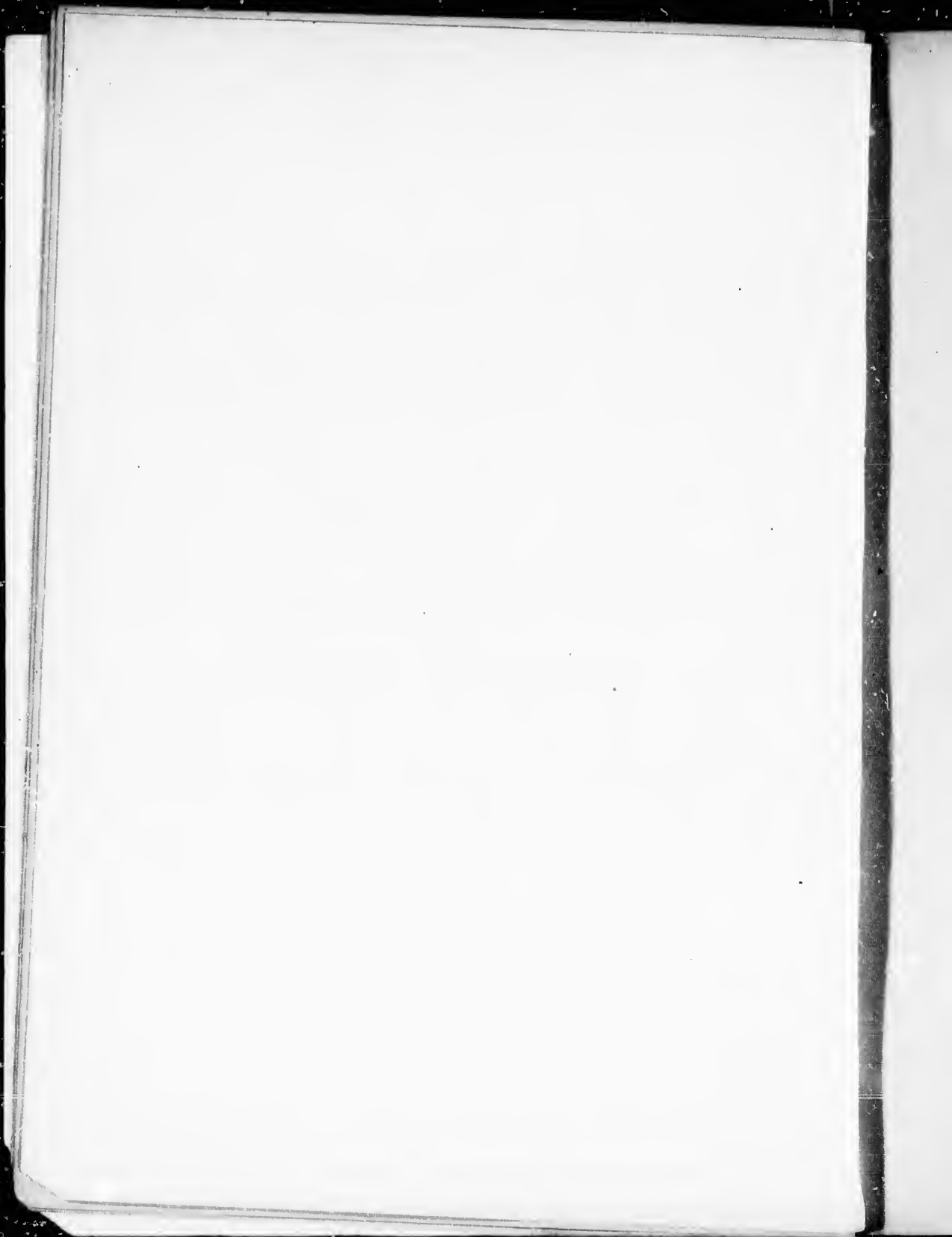
9,
of
ne

es
of
d
as

y
is
t-



Rolph.



- burgh, and afterwards of Queenston, Co. Lincoln; m. 22nd April 1823, Margaret Stanton, and had issue (besides others *d.*) a dau. Helen m. to Edward-Hugh Massey-Baker, in Holy Orders.
- 5a.—Thomas, b. 16th Sept. 1803, d. 14th March 1887, in Holy Orders, Deacon 1829, Priest 1831, Vicar of Chisledon, Co. Wilts, m. 3rd July 1866, Caroline (widow of John Chubb) dau. of Clement Tudway, in Holy Orders, previously Capt. 16th Light Dragoons.
- 1a.—Mary-Ann, b. 17th July 1790, m. to Archibald Taylor, Capt., afterwards Major, 38th Staffordshire Regt., and had issue, Archibald, Capt. 66th Regt.; Sarah, m. to Edward Tuthill; Frances, m. to Charles Tuthill.
- 2a.—Frances, b. 18th March 1792, d. 1814, m. to Hamilton, Lieut.-Col. in the Army.
- 3a.—Elizabeth, b. 24th June 1796, d. 17th March 1835, unm.
- 4a.—Emma, b. 8th July 1797, d. 8th Feb. 1838, m. 14th Dec. 1833, to William Salmon, b. 18th June 1802, d. 8th Feb. 1868, County Judge Co. Norfolk, son of George Salmon, Col. in the Army, and had issue, William Thomas, b. 2nd May 1836, d. 3rd Feb. 1863, M.D.
- 5a.—Amelia, b. 15th June 1798, d. May 1799.
- 6a.—Sarah, b. 7th May 1799, d. 10th July 1829, m. to Rev. George Ryerson (see Ryerson).
- 7a.—Amelia, b. 10th April 1800, d. 24th Aug. 1849, unm.
- 8a.—Hester, b. 1st July 1801, *d.*, m. 21st July 1825, to David Robertson, in Holy Orders, sometime Chaplain to the Forces at Quebec.
- 9a.—Harriet, b. 30th June 1802, d. young.
- 10a.—Louisa, b. 12th July 1805, *d.*
- 11a.—Maria, b. 22nd Aug. 1806, *d.*, m. to James Durand.
- 12a.—Helen, b. 19th Aug. 1807, *d.*, m. 26th April 1836, to George-Hamilton Park, son of Capt. Park, who served in 1812.

ARMS: *Arg.*, three ravens *ppr.*, and in chief a cinquefoil *gu.*
 Crest: A raven *ppr.* holding in his beak a trefoil slipped, *vert.*
 Motto: Deus pascit corvos.

