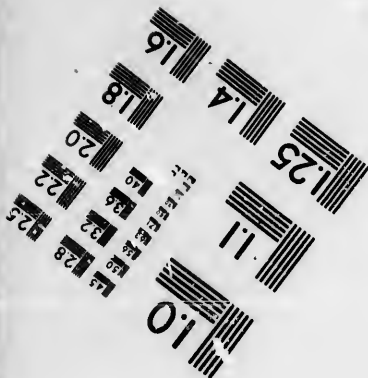
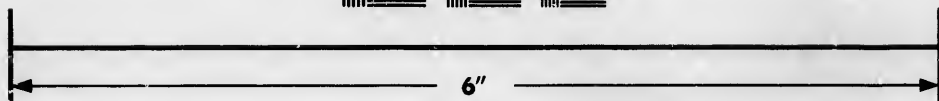
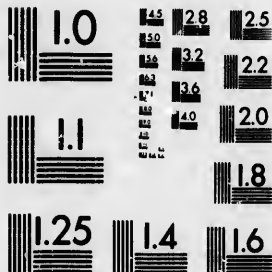


**IMAGE EVALUATION
TEST TARGET (MT-3)**



**Photographic
Sciences
Corporation**

23 WEST MAIN STREET
WEBSTER, N.Y. 14580
(716) 872-4503

**CIHM/ICMH
Microfiche
Series.**

**CIHM/ICMH
Collection de
microfiches.**



Canadian Institute for Historical Microreproductions / Institut canadien de microreproductions historiques

© 1986

Technical and Bibliographic Notes/Notes techniques et bibliographiques

The Institute has attempted to obtain the best original copy available for filming. Features of this copy which may be bibliographically unique, which may alter any of the images in the reproduction, or which may significantly change the usual method of filming, are checked below.

L'Institut a microfilmé le meilleur exemplaire qu'il lui a été possible de se procurer. Les détails de cet exemplaire qui sont peut-être uniques du point de vue bibliographique, qui peuvent modifier une image reproduite, ou qui peuvent exiger une modification dans la méthode normale de filmage sont indiqués ci-dessous.

- | | |
|--|--|
| <input checked="" type="checkbox"/> Coloured covers/
Couverture de couleur | <input type="checkbox"/> Coloured pages/
Pages de couleur |
| <input type="checkbox"/> Covers damaged/
Couverture endommagée | <input type="checkbox"/> Pages damaged/
Pages endommagées |
| <input type="checkbox"/> Covers restored and/or laminated/
Couverture restaurée et/ou pelliculée | <input type="checkbox"/> Pages restored and/or laminated/
Pages restaurées et/ou pelliculées |
| <input type="checkbox"/> Cover title missing/
Le titre de couverture manque | <input checked="" type="checkbox"/> Pages discoloured, stained or foxed/
Pages décolorées, tachetées ou piquées |
| <input type="checkbox"/> Coloured maps/
Cartes géographiques en couleur | <input type="checkbox"/> Pages detached/
Pages détachées |
| <input type="checkbox"/> Coloured ink (i.e. other than blue or black)/
Encre de couleur (i.e. autre que bleue ou noire) | <input checked="" type="checkbox"/> Showthrough/
Transparence |
| <input type="checkbox"/> Coloured plates and/or illustrations/
Planches et/ou illustrations en couleur | <input type="checkbox"/> Quality of print varies/
Qualité inégale de l'impression |
| <input type="checkbox"/> Bound with other material/
Rallié avec d'autres documents | <input type="checkbox"/> Includes supplementary material/
Comprend du matériel supplémentaire |
| <input type="checkbox"/> Tight binding may cause shadows or distortion
along interior margin/
La reliure serrée peut causer de l'ombre ou de la
distorsion le long de la marge intérieure | <input type="checkbox"/> Only edition available/
Seule édition disponible |
| <input type="checkbox"/> Blank leaves added during restoration may
appear within the text. Whenever possible, these
have been omitted from filming/
Il se peut que certaines pages blanches ajoutées
lors d'une restauration apparaissent dans le texte,
mais, lorsque cela était possible, ces pages n'ont
pas été filmées. | <input type="checkbox"/> Pages wholly or partially obscured by errata
slips, tissues, etc., have been refilmed to
ensure the best possible image/
Les pages totalement ou partiellement
obscurcies par un feuillet d'errata, une pelure,
etc., ont été filmées à nouveau de façon à
obtenir la meilleure image possible. |
| <input type="checkbox"/> Additional comments:
Commentaires supplémentaires: | |

This item is filmed at the reduction ratio checked below/
Ce document est filmé au taux de réduction indiqué ci-dessous.

10X	12X	14X	16X	18X	20X	22X	24X	26X	28X	30X	32X
				/							

The copy filmed here has been reproduced thanks to the generosity of:

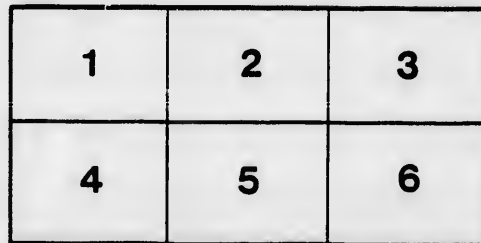
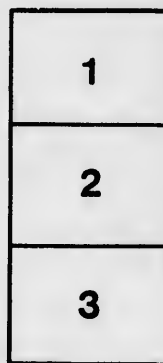
New Brunswick Museum
Saint John

The images appearing here are the best quality possible considering the condition and legibility of the original copy and in keeping with the filming contract specifications.

Original copies in printed paper covers are filmed beginning with the front cover and ending on the last page with a printed or illustrated impression, or the back cover when appropriate. All other original copies are filmed beginning on the first page with a printed or illustrated impression, and ending on the last page with a printed or illustrated impression.

The last recorded frame on each microfiche shall contain the symbol \rightarrow (meaning "CONTINUED"), or the symbol ∇ (meaning "END"), whichever applies.

Maps, plates, charts, etc., may be filmed at different reduction ratios. Those too large to be entirely included in one exposure are filmed beginning in the upper left hand corner, left to right and top to bottom, as many frames as required. The following diagrams illustrate the method:



L'exemplaire filmé fut reproduit grâce à la générosité de:

New Brunswick Museum
Saint John

Les images suivantes ont été reproduites avec le plus grand soin, compte tenu de la condition et de la netteté de l'exemplaire filmé, et en conformité avec les conditions du contrat de filmage.

Les exemplaires originaux dont la couverture en papier est imprimée sont filmés en commençant par le premier plat et en terminant soit par la dernière page qui comporte une empreinte d'impression ou d'illustration, soit par le second plat, selon le cas. Tous les autres exemplaires originaux sont filmés en commençant par la première page qui comporte une empreinte d'impression ou d'illustration et en terminant par la dernière page qui comporte une telle empreinte.

Un des symboles suivants apparaît sur la dernière image de chaque microfiche, selon le cas: le symbole \rightarrow signifie "A SUIVRE", le symbole ∇ signifie "FIN".

Les cartes, planches, tableaux, etc., peuvent être filmés à des taux de réduction différents. Lorsque le document est trop grand pour être reproduit en un seul cliché, il est filmé à partir de l'angle supérieur gauche, de gauche à droite, et de haut en bas, en prenant le nombre d'images nécessaire. Les diagrammes suivants illustrent la méthode.

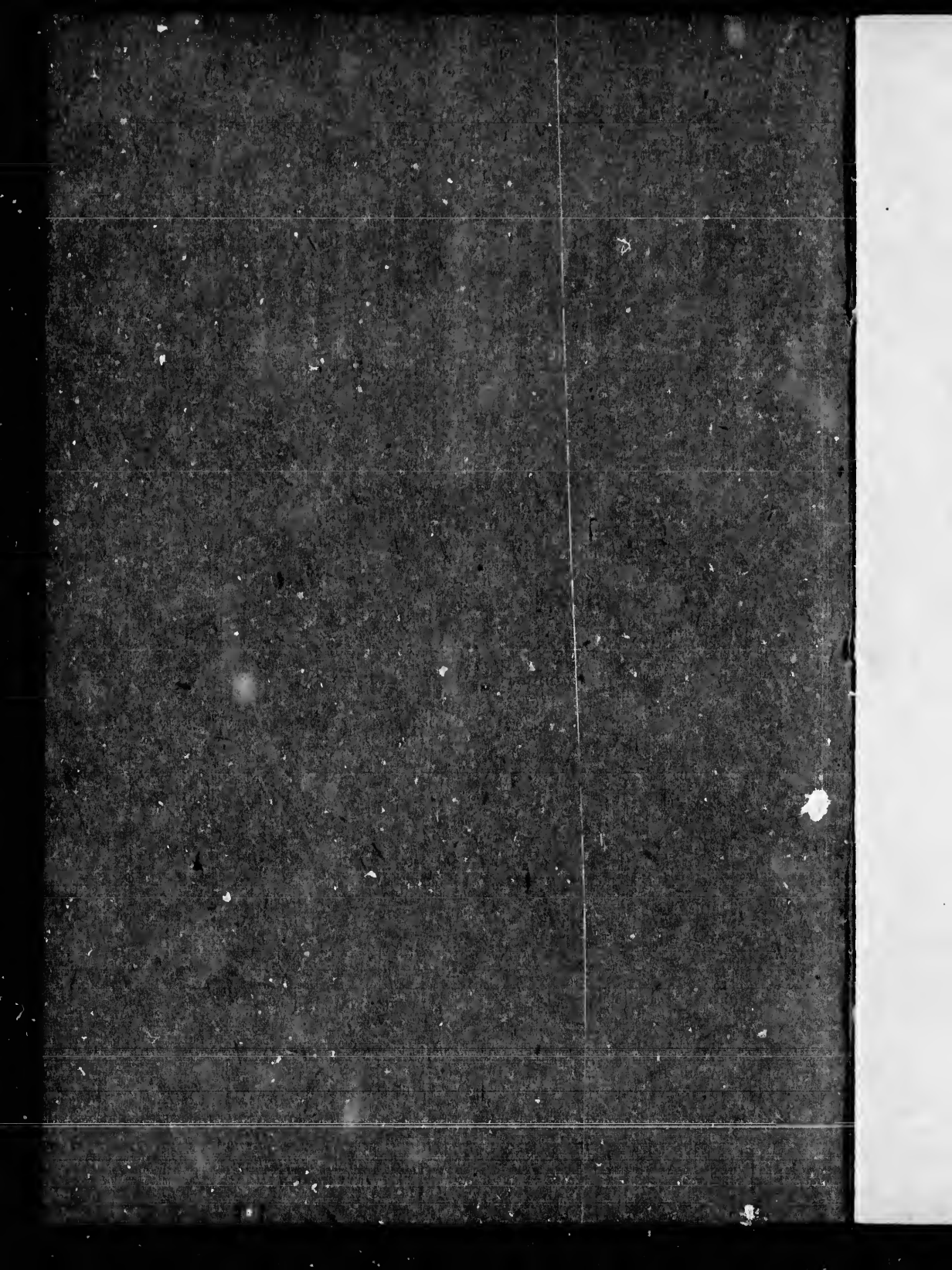
arrata
to

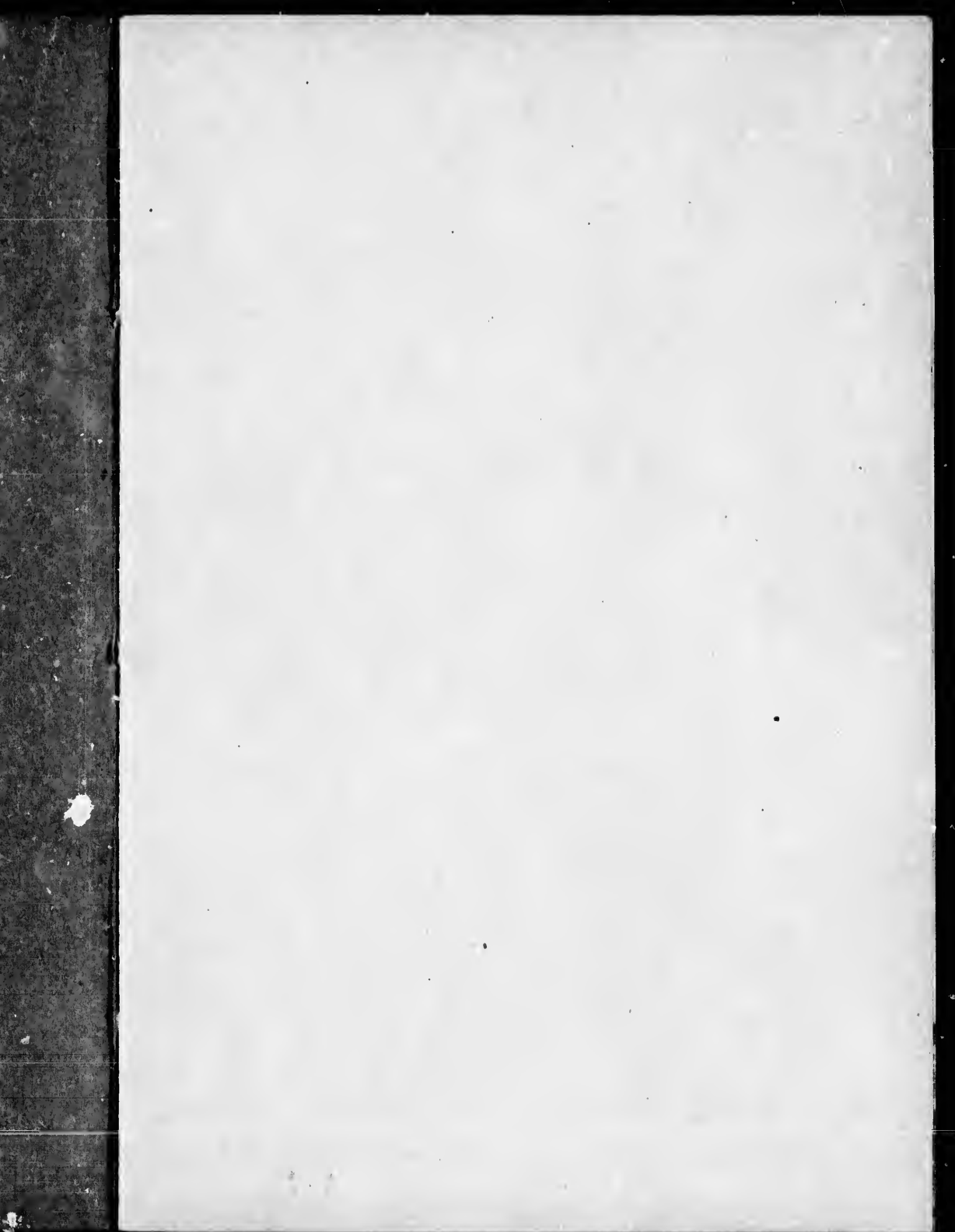
pelure,
n à

Evangelical Church Society
OF
New Brunswick.

St. John, N. B.

1895.







267.62
LVA

Evangelical Church Society

OF NEW BRUNSWICK.

PRESIDENT.

SIR S. LEONARD TILLEY, C.B., K.C.M.G.

VICE-PRESIDENTS.

REV. JOHN DE SOYRES. REV. GEO. E. LLOYD.
REV. W. H. SAMPSON. REV. R. P. MCKIM.
JAMES R. RUEL. R. W. CROOKSHANK.
JAMES F. ROBERTSON.

TREASURER.

R. B. EMERSON.

SECRETARIES.

Clerical: REV. A. D. DEWDNEY.
Lay: WALTER SCOTT.

AUDITORS.

H. A. DRURY. JOSEPH COURT.

S. 84
A864

The Council.

SIR S. L. TILLEY, *Chairman.*

Rev. JOHN de SOYRES.	Rev. GEO. E. LLOYD.
Rev. W. H. SAMPSON.	Rev. R. P. McKIM.
Rev. A. D. DEWDNEY.	JAMES R. RUEL.
JAMES. F. ROBERTSON.	R. W. CROOKSHANK.
R. B. EMERSON.	WALTER SCOTT.
H. A. DRURY.	JOSEPH COURT.
S. SCHOFIELD.	A. H. HANINGTON.
RICHARD FARMER.	GEO. E. FAIRWEATHER.
S. S. HALL.	E. C. JONES.
W. J. CORNFIELD.	JOHN HOLDEN.
F. W. DANIEL.	W. P. COURT.
S. L. BRITAIN.	F. O. ALLISON.
THOS. McAVITY.	WM. HAMLYN.
S. G. KILPATRICK.	JOHN C. KEE.
E. C. MORAN.	N. W. BRENAN.
CHARLES PIDGEON.	HAROLD PERLEY.

ADDITIONAL MEMBERS.

ALL CLERICAL MEMBERS OF THE SOCIETY
AND

The Presidents, or other authorized Delegates, of all
Branch Societies.

Executive Committee.

S. SCHOFIELD, *Chairman.*

Sir S. L. TILLEY.	Rev. JOHN de SOYRES.
Rev. GEO. E. LLOYD.	Rev. W. H. SAMPSON.
Rev. A. D. DEWDNEY.	Rev. R. P. McKIM.
JAMES F. ROBERTSON.	JAMES R. RUEL.
R. W. CROOKSHANK.	A. H. HANINGTON.
R. B. EMERSON.	WALTER SCOTT.

GEO. E. FAIRWEATHER, *Secretary.*

Finance Committee.

H. A. DRURY, *Chairman.*

R. B. EMERSON.	JAMES F. ROBERTSON.
S. S. HALL.	R. W. CROOKSHANK.
E. C. JONES.	W. P. COURT.
THOS. McAVITY.	WALTER SCOTT.

JOSEPH COURT.

FRED. W. DANIEL, *Secretary.*

Correspondence Committee.

Rev. GEO. E. LLOYD, *Chairman.*

Rev. JOHN de SOYRES.	A. H. HANINGTON.
S. SCHOFIELD.	GEO. E. FAIRWEATHER.
WALTER SCOTT.	

Rev. A. D. DEWDNEY, *Secretary.*

**Book Depository
and
Publication Committee.**

Rev. JOHN DE SOYRES, *Chairman.*

Rev. W. H. SAMPSON.

Rev. GEO. E. LLOYD.

Rev. A. D. DEWDNEY.

JAMES R. RUEL.

R. B. EMERSON.

A. H. HANINGTON.

W. J. CORNFIELD.

S. G. KILPATRICK.

Rev. R. P. McKIM, *Secretary.*

Branch Society Committee.

Rev. W. H. SAMPSON, *Chairman.*

Rev. GEO. E. LLOYD.

Rev. A. D. DEWDNEY.

R. B. EMERSON.

WALTER SCOTT.

RICHARD FARMER.

H. A. DRURY.

JOHN C. KEE.

F. O. ALLISON, *Secretary.*

DECLARATION OF PRINCIPLES.

WE, THE CLERGY AND LAITY in the Diocese of Fredericton, faithful to the Evangelical principles of our Protestant and Reformed Church of England, being Members of this Society, hereby make the following solemn declaration:

We declare our Church to be, and desire that it shall continue, faithful to the Primitive, Apostolic, and Scriptural principles affirmed at the Reformation.

And we are determined, by the help of God, to hold and maintain the Doctrine, Sacraments, and Discipline of Christ as the Lord hath commanded in His Holy Word, and as the Church of England hath received and set forth the same in The Book of Common Prayer and Administration of the Sacraments, and other Rites and Ceremonies of the Church, according to the use of the Church of England; and in the Thirty-Nine Articles of Religion: and to transmit the same unimpaired to posterity.

OBJECTS.

- 1.— To maintain the Reformation principles and doctrines of the Church of England.
- 2.— To preserve the simplicity of her public worship, and the purity of her teaching, as derived from Holy Scriptures, and set forth in the Liturgy and Articles of the Book of Common Prayer.
- 3.— For mutual counsel and concerted action in all matters affecting the well-being of the Church.

CONSTITUTION.

NAME.

THE Society shall be called the EVANGELICAL CHURCH
SOCIETY OF NEW BRUNSWICK.

MEMBERSHIP.

The privileges of membership shall be open to all who are in sympathy with the declared principles and objects of the Society, and who contribute at least One Dollar per annum to the funds, which shall qualify them to vote at all Meetings of the Society.

OFFICERS.

The Officers of the Society shall consist of a President, one or more Vice-Presidents, a Treasurer, a Clerical and a Lay Secretary, and two Auditors, all of whom shall be elected, by nomination and ballot, at the Annual Meeting of the Society, and shall perform the duties usually incidental to such offices. In the event of the resignation or death of any Officer, his place shall be filled, until the next Annual Meeting, by whoever may be appointed by the Council.

THE COUNCIL.

The general control and management of the business and funds of the Society shall be vested in a Council, which shall consist of the Officers, the Clerical Members, the Presidents or other authorized Delegates of all Branch Societies, and twenty Lay Members of the Society, who shall be elected, by nomination and ballot, at the Annual Meeting.

COMMITTEES.

The following Committees shall be appointed each year by the Council, from their own Members, at their first Meeting after election: viz., an Executive Committee; a Finance Committee; a Correspondence Committee; a Book Depository and Publication Committee, and a Branch Society Committee. The Council may also appoint such other Committees, from the Members of the Society, as may appear necessary from time to time. They shall also have authority to fix and alter the number of Members on each Committee which they appoint, and to specify their duties and powers. No business shall, however, be transacted by any Committee unless at least a majority of the Members are present.

SOCIETY MEETINGS.

The Regular Annual Meeting of the Society shall be held at whatever place and time during the month of October in each year shall be fixed by the Council, which body shall make whatever arrangements they may consider advisable regarding the Meeting. At least two weeks' notice of the Meeting shall be published by the Lay Secretary, in whatever manner the Council may determine.

Special Meetings of the Society may be called, by order of the Council, to be held at such times and places as they may direct. Previous notice of all such Meetings, stating the objects, shall be published at least three weeks, in whatever manner the Council may determine.

COUNCIL MEETINGS.

The Council shall hold Regular Quarterly Meetings in St. John, at such places and dates as may be arranged from time to time, and also Special Meetings whenever necessary: of all which Meetings due notice shall be given

by the Lay Secretary to each Member. Seven Members of the Council, of whom four must be Laymen, shall, in all cases, form a quorum for the transaction of business.

BRANCH SOCIETIES.

Branch Societies may be established at any places in the Province by arrangement with the Council, which body shall have power to issue the necessary authority for the formation and guidance of all such Branches. All funds collected by Branches shall be remitted to the Treasurer of the Society, after payment of the necessary local expenses.

CHANGES IN CONSTITUTION.

Alterations in the Constitution may be made at any Meeting of the Society by the vote of at least two-thirds of the Members present, provided that one month's previous notice in writing of the proposed changes has been fyled with the President and Secretaries, or any two of them, who shall give immediate notice to all Members of the Council.

s
l

a
y
e
s
f

y
f
s
d
.
e

