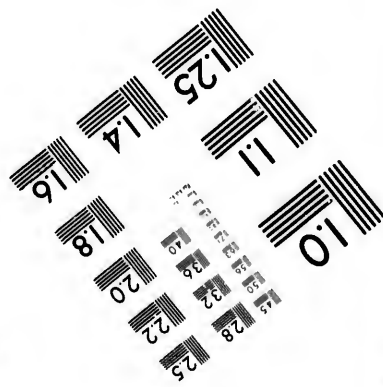
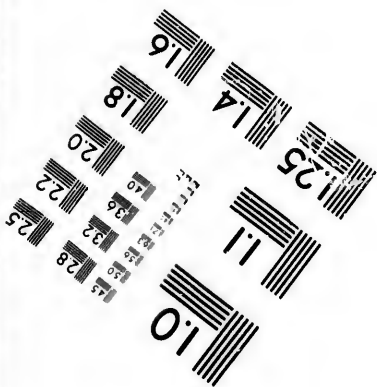
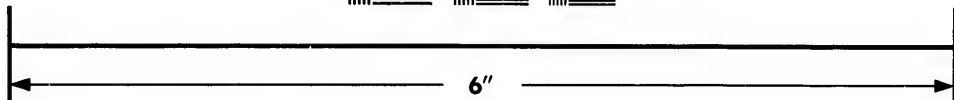
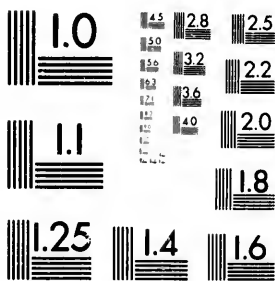


**IMAGE EVALUATION  
TEST TARGET (MT-3)**



**Photographic  
Sciences  
Corporation**

23 WEST MAIN STREET  
WEBSTER, N.Y. 14580  
(716) 872-4503

14  
16  
18  
20  
22  
25  
28  
32  
36  
40

**CIHM/ICMH  
Microfiche  
Series.**

**CIHM/ICMH  
Collection de  
microfiches.**



Canadian Institute for Historical Microreproductions / Institut canadien de microreproductions historiques

10

**© 1981**

Technical and Bibliographic Notes/Notes techniques et bibliographiques

The Institute has attempted to obtain the best original copy available for filming. Features of this copy which may be bibliographically unique, which may alter any of the images in the reproduction, or which may significantly change the usual method of filming, are checked below.

L'Institut a microfilmé le meilleur exemplaire qu'il lui a été possible de se procurer. Les détails de cet exemplaire qui sont peut-être uniques d'un point de vue bibliographique, qui peuvent modifier une image reproduite, ou qui peuvent exiger une modification dans la méthode normale de filmage sont indiqués ci-dessous.

- Coloured covers/  
Couverture de couleur
- Covers damaged/  
Couverture endommagée
- Covers restored and/or laminated/  
Couverture restaurée et/ou pelliculée
- Cover title missing/  
Le titre de couverture manque
- Coloured maps/  
Cartes géographiques en couleur
- Coloured ink (i.e. other than blue or black)/  
Encre de couleur (i.e. autre que bleue ou noire)
- Coloured plates and/or illustrations/  
Planches et/ou illustrations en couleur
- Bound with other material/  
Relié avec d'autres documents
- Tight binding may cause shadows or distortion along interior margin/  
La reliure serrée peut causer de l'ombre ou de la distortion le long de la marge intérieure
- Blank leaves added during restoration may appear within the text. Whenever possible, these have been omitted from filming/  
Il se peut que certaines pages blanches ajoutées lors d'une restauration apparaissent dans le texte, mais, lorsque cela était possible, ces pages n'ont pas été filmées.
- Additional comments:/  
Commentaires supplémentaires:

- Coloured pages/  
Pages de couleur
- Pages damaged/  
Pages endommagées
- Pages restored and/or laminated/  
Pages restaurées et/ou pelliculées
- Pages discoloured, stained or foxed/  
Pages décolorées, tachetées ou piquées
- Pages detached/  
Pages détachées
- Showthrough/  
Transparence
- Quality of print varies/  
Qualité inégale de l'impression
- Includes supplementary material/  
Comprend du matériel supplémentaire
- Only edition available/  
Seule édition disponible
- Pages wholly or partially obscured by errata slips, tissues, etc., have been refilmed to ensure the best possible image/  
Les pages totalement ou partiellement obscurcies par un feuillet d'errata, une pelure, etc., ont été filmées à nouveau de façon à obtenir la meilleure image possible.

The Provincial Archives of British Columbia has two copies of this item. The map mentioned in the title is missing from both copies.

This item is filmed at the reduction ratio checked below/  
Ce document est filmé au taux de réduction indiqué ci-dessous.

10X	12X	14X	16X	18X	20X	22X	24X	26X	28X	30X	32X
						✓					

The copy filmed here has been reproduced thanks to the generosity of:

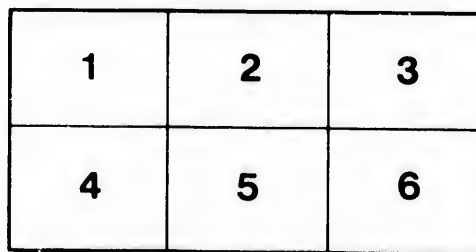
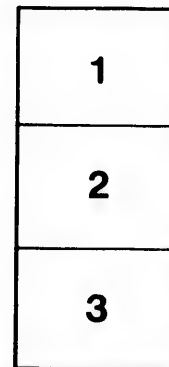
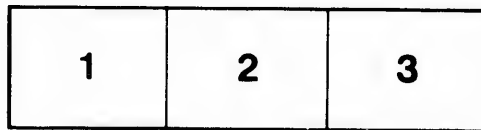
Library Division  
Provincial Archives of British Columbia

The images appearing here are the best quality possible considering the condition and legibility of the original copy and in keeping with the filming contract specifications.

Original copies in printed paper covers are filmed beginning with the front cover and ending on the last page with a printed or illustrated impression, or the back cover when appropriate. All other original copies are filmed beginning on the first page with a printed or illustrated impression, and ending on the last page with a printed or illustrated impression.

The last recorded frame on each microfiche shall contain the symbol  $\rightarrow$  (meaning "CONTINUED"), or the symbol  $\nabla$  (meaning "END"), whichever applies.

Maps, plates, charts, etc., may be filmed at different reduction ratios. Those too large to be entirely included in one exposure are filmed beginning in the upper left hand corner, left to right and top to bottom, as many frames as required. The following diagrams illustrate the method:



L'exemplaire filmé fut reproduit grâce à la générosité de:

Library Division  
Provincial Archives of British Columbia

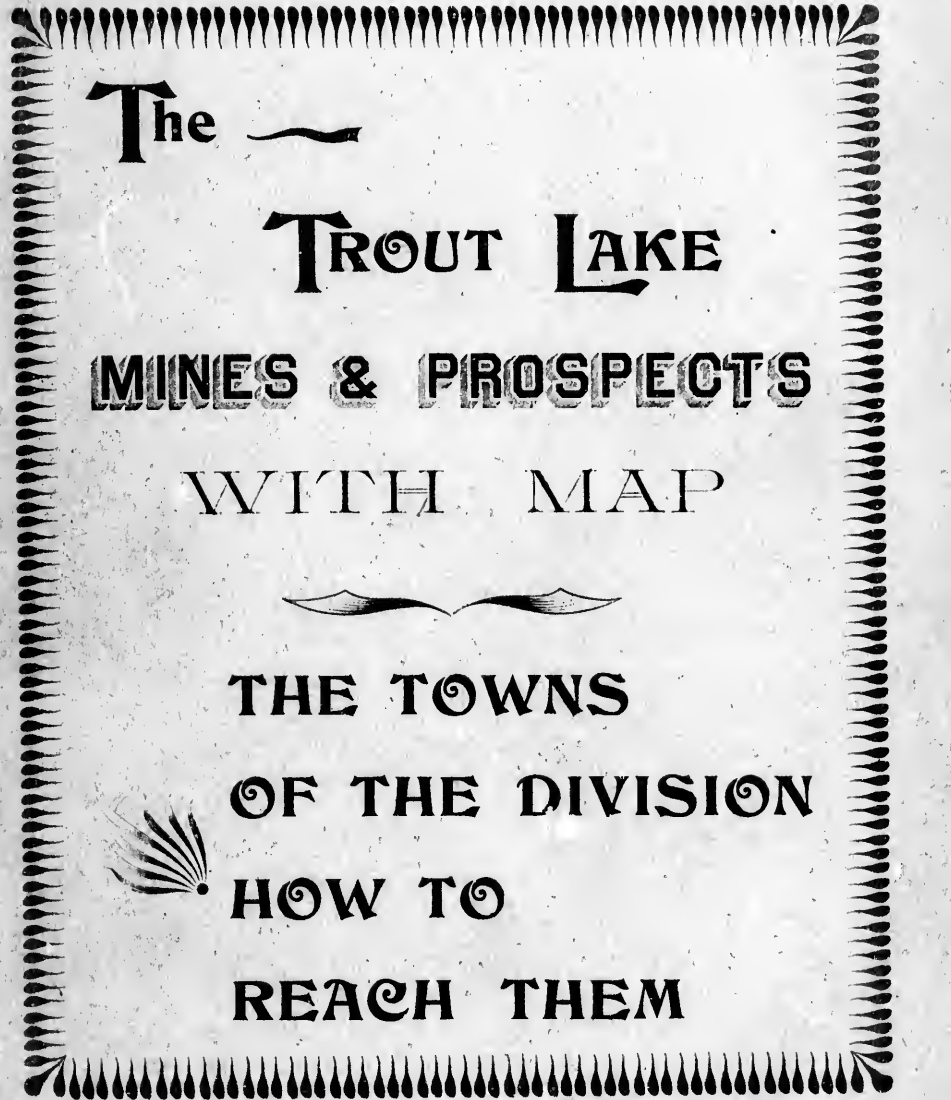
Les images suivantes ont été reproduites avec le plus grand soin, compte tenu de la condition et de la netteté de l'exemplaire filmé, et en conformité avec les conditions du contrat de filmage.

Les exemplaires originaux dont la couverture en papier est imprimée sont filmés en commençant par le premier plat et en terminant soit par la dernière page qui comporte une empreinte d'impression ou d'illustration, soit par le second plat, selon le cas. Tous les autres exemplaires originaux sont filmés en commençant par la première page qui comporte une empreinte d'impression ou d'illustration et en terminant par la dernière page qui comporte une telle empreinte.

Un des symboles suivants apparaîtra sur la dernière image de chaque microfiche, selon le cas: le symbole  $\rightarrow$  signifie "A SUIVRE", le symbole  $\nabla$  signifie "FIN".

Les cartes, planches, tableaux, etc., peuvent être filmés à des taux de réduction différents. Lorsque le document est trop grand pour être reproduit en un seul cliché, il est filmé à partir de l'angle supérieur gauche, de gauche à droite, et de haut en bas, en prenant le nombre d'images nécessaire. Les diagrammes suivants illustrent la méthode.





The ~

TROUT LAKE

**MINES & PROSPECTS**

WITH MAP



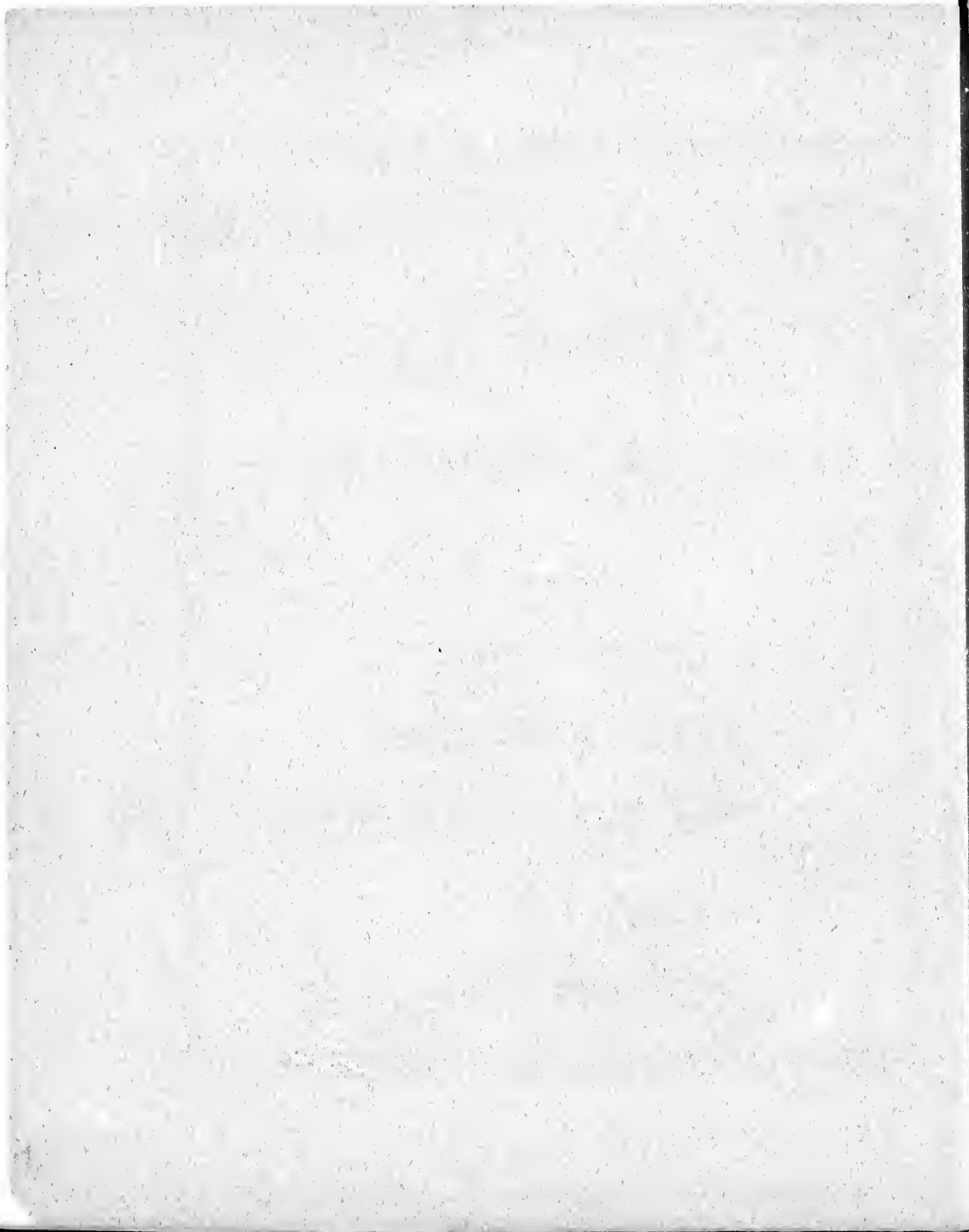
**THE TOWNS**

**OF THE DIVISION**



**HOW TO**

**REACH THEM**



A REVIEW OF  
**The Mineral Development**

 OF THE

 **Trout Lake District  
With Map.**



A DESCRIPTION OF THE  
**Mining and Distributing Centres**

 OF **Trout Lake City**



**Ferguson  
Thomsons Landing  
Ten Mile City  
and Comaplix.**

WEST KOOTENAY, BRITISH COLUMBIA.



## INTRODUCTORY.

Before proceeding with a description of the mining properties and towns of the Trout Lake and Lardeau districts, the Trades Committee of Trout Lake, under whose supervision this pamphlet is being printed, would like to say a few words in explanation of the objects of this work, also to add a few words of advice to outside parties who contemplate either coming into the district to live or invest their money in its mining properties.

The Trout Lake district is no poor man's proposition. What is meant by this is, that to a man lacking the means of purchasing mining properties, and after purchase, working them successfully, this country can possess few attractions. And the object of this pamphlet is not to encourage, at this juncture, the poor man to come here, but to present to the moneyed man the advantages which the rich silver-lead properties of this district possess for a lucrative investment of his surplus capital. This description of the advantages which the several towns of the Trout Lake District possess, is not made for the purpose of inducing an indiscriminate rush to those towns, but to show by a description of their possibilities the advantages they possess for furthering the successful and economic operation of neighboring mining properties.

It will be generally admitted by every fair-minded man, that before any of these towns can support an influx of the laboring and business classes, more than they already possess, the district will have to increase its list of shipping mines. This can best be done by laying the value of the mines and prospects of these sections before the investing public, and induce it to expend a portion of its money in the work of development.

It must not be inferred from the foregoing that it is meant to discourage the prospector from extending his attention to this district—by no means. There is plenty of country to be gone over, and almost every section of it will bear closer prospecting. After the prospector must come the capitalist, who in turn will pave the way, by creating the demand for labor, for the poorer man. And until such time has arrived it would not be wise for a man of small means to come here, for he would exhaust his slender resources long before the means of recuperation would present itself.

In conclusion it might be said that the map and description of prospects and mines included in this pamphlet are thoroughly reliable and will be vouched for by the members of the Trades committee.

### TROUT LAKE CITY.

**F**EW towns are possessed of greater promise or of finer natural advantages than Trout Lake City. This thriving town from its location in the mining division of Trout Lake is bound to be the headquarters for the various companies which will, in the future, operate the rich gold and silver mines which have been discovered in the district during the past four or five years. It is located at the northern extremity of Trout Lake and will command the supply trade of all the country bounding its shores, and which recent exploration has demonstrated to be second to none in British Columbia as regards the richness of its ore bodies. It is connected by trail and wagon road with all the principal mines of the district. Then, too, Lardeau creek empties into the lake on the eastern side of the town, and a large share of the trade resulting from the operation of the mines which are dotted here and there on the mountains on either side of the valley will find its way to the merchants of Trout Lake City.

It is further expected that before many months a line of railroad will be constructed from the head of Kootenay Lake to Trout Lake City, and from thence to Arrowhead, with branch lines up the north and south forks of Lardeau creek to the rich mining properties of that neighborhood. And in this event all the ore from these mines would have to pass through Trout Lake City, making of this town a railroad centre and the chief distributing point for the district.

Already the initial step has been taken towards solving the problem of transportation and it will be only a few weeks until a steamer is in the course of construction to operate on the lake and carry supplies to the several points thereon nearest, and connected by trail with the scene of mining operations.

To reach Trout Lake City from the main line of the C. P. R., cars will have to be changed at the head of Kootenay Lake and the train running to Arrowhead boarded. Arrowhead is some 28 miles distant from Revelstoke and is situated at the upper end of Arrow lake. From this point a short trip by water lands the traveller at Thomsons Landing, from whence a stage line runs to Trout Lake City. The whole journey occupying a little over six hours and interesting throughout for the beauty and grandeur of the mountain scenery through which the route passes. At all points along the path of journey the very best of accommodation is available, and when Trout Lake City is reached, the choice of four hotels, each equipped in first-class style, is presented to the traveller, and no matter which one of these he selects for his temporary home, his comfort will be carefully looked after.

After having finally settled himself to his satisfaction he will find on inspection that the town is possessed of four stores in addition to the hotels mentioned, a sawmill, a post-office, a telephone service with outside points, a schoolhouse, a meat market, a printing office, barber shop, blacksmith shop, three livery stables, government buildings, drugstore and assay office. If he decides on settling in the district, he will find, that as the townsite of Trout Lake City has been crown granted, he will be able to procure a clear title to any lots which he may chance to purchase. If he is fond of sport and would fish or shoot, he will find the lake, and the creeks emptying into it abundantly stocked with the speckled beauties, and the mountain slopes surrounding the lake present the very best opportunities for the use of the rifle. Game of every description abounds, and among the different varieties may be mentioned: Caribou, mountain goat, bear, wolves, cougar, lynx, grouse and duck; in fact to the practised sportsman this part of the district presents innumerable advantages for the indulgence of his favorite pastime.

If he has come in with the intention of investing in mining properties, or for purposes of exploration, he will find that this point is the very best one he could select as his headquarters. It is centrally situated and from here he can operate in every direction. His position at this point commands the whole lower lake section and the Lardo-Duncan country. It is within two hours ride of the north and south forks of Lardeau creek, and is the terminus of the stage line from Thomsons landing. Last summer some wonderfully rich proper-

300035

ties were located within a very short distance of Trout Lake City, and just as soon as the season is sufficiently advanced they will be worked, and it is confidently expected by their owners that before snow flies next fall, they will be shipping ore. These properties are situated on Humphries, Glacier, Five Mile, Canyon, and Haley creeks. Taking all things into consideration, then, it will not be an exaggeration, in view of the exceeding richness of Trout Lake ores, and the remarkable progress that has been made during the past year, that Trout Lake City will develop into one of the largest and liveliest towns in West Kootenay.

### FERGUSON.

**T**O reach the above town from the main line the directions are the same as those for reaching Trout Lake City, only, when the forks of the road, about a mile from Trout Lake City, is reached the left branch is taken. After a ride of four miles you will arrive at what is believed by many to be the coming Butte of British Columbia. From its position at the junction of the North Fork and Lardeau creek, Ferguson is bound to command a large patronage from the mines now being operated a few miles from its centre. At a distance of a little over seven miles the Silver Cup is in full operation and the product of the mine passes through the town on its way to the Landing. Then, further on up the south fork, there are several good properties, extensively developed, which will next fall, be shipping their products and employing large forces of men. Among these properties may be mentioned such well-known names as the Silver Cup, Bad Shot, Black Prince, Silver Chief and Lade Group.

The town is possessed of all the necessaries for completely outfitting any prospectors who may decide on making this point their headquarters. It has four good hotels, three general stores, two livery stables, a good sawmill, and is the headquarters for a large transportation company. The mail arrives here semi-weekly, and next summer the service will be increased to three times a week.

No matter how large the demand for building material may be, Ferguson can supply it, for it has one of the most completely equipped sawmills in the district. A large supply of good lumber is on hand, and it is expected that before many days the mill will commence sawing, so as to provide, in case of emergencies, lumber sufficient to supply demands even larger than those expected at the present time.

This town is most advantageously located, not only as regards its natural advantages, but from the fact that it is in the very heart of the mines located on the Lardeau river and its tributaries. Everything goes to indicate that the coming season will be one of exceptional activity in mining circles, and the citizens and business men of the town are making the most complete preparations to accommodate the rush of people expected in there when the season is sufficiently advanced. It is also expected that a greater increase in the sales of mining properties this season will result from the development operations which have taken place during last fall and winter, and if such expectations culminate in realities, then Ferguson will occupy an enviable position among the mining towns of West Kootenay.

### THOMSONS LANDING.

**T**HOMSONS LANDING is situated at the head of navigation on the North-east Arm of Upper Arrow Lake, and it is at this point that transshipment of freight and baggage, for Trout Lake City, Ferguson and Ten Mile City takes place. This town is a most important one, from the fact that in addition to its being at the head of navigation on the Arm, and therefore the point at which all freight is transferred for shipment to the interior of the district, and from the fact that all the ore from the mines on Lardeau creek and Trout Lake will be hauled there prior to shipment, it is also important because it will to a great extent be the centre of supply for the Fish Creek district. Up Fish Creek many

valuable prospects have been discovered, and as the result of late development operations have exceeded the expectations of persons holding property in this district, it goes without saying that this creek will receive a considerable share of attention from the many moneyed men who are expected in to look over properties in this and neighboring districts during the coming season.

Thomsons Landing is possessed of a couple of completely equipped hotels, and it is pretty safe to say that nowhere in the country will the comfort of travellers be more sedulously looked after than at either one of these hotels. It is the headquarters for the stage line and a strong transportation company, and has a general store, post-office, and blacksmith shop. Mail can be sent out and received daily, and a telephone service connects this place with the interior and outside points. It is an excellent place from which to prosecute inquiries into the value of either Fish Creek or Trout Lake ore bodies.

### TEN MILE CITY.

**A**BOUT six miles above Ferguson and near the head of the South Fork of Lardean Creek is Ten Mile City. This place, although it is as yet in embryo, is likely to prove quite as lively a point as there is in the Trout Lake district, from the fact that several rich prospects, the hope of that section, are situated on the mountains surrounding this little town. At present it is possessed of but one store, one hotel and a livery stable. But as the properties before mentioned will be vigorously developed this coming season, it is confidently expected by many fully competent to judge, that Ten Mile City will keep pace with the section of the country with which its interests are immediately identified. It will be connected by wagon road with the main road to Thomsons Landing as soon as the season is sufficiently advanced to permit of the work being done.

### COMAPLIX.

**S**ITUATED on the northern side of the Arm, almost opposite and three miles distant from Thomsons Landing, is the flourishing little town of Comaplix. This town is the centre of extensive lumbering and mining interests. The Kootenay Lumber Company has a large mill there, which does an immense trade, not only with the districts contiguous to it, but with towns on the main line of the C. P. R. It is an important point, too, for it is a convenient base of supply for the mines of the Fish creek country. The trunk trail which taps this district has its terminus here. Besides, a large number of the claim-holders make this town their headquarters. There is every facility for supplying either the mine operator or the prospector, as the town possesses a very large general store. It has a post-office and mail can be obtained daily. Its one hotel is neatly appointed and most commodious, and a telegraphic service connects it with all outside points. All these considerations, then, make it a most advantageous point from which to operate among the valuable properties of which it is the principal point of supply.

### EIGHT MILE CAMP.

**P**OS situated eight miles from Trout Lake City and four miles from Ferguson, on the South Fork of Lardean creek. It is reached from the head of navigation by the main wagon road. It is at this point where the trail to the Silver Cup branches off. It is three miles distant from this rich property and is the headquarters for the rawhidlers. Large, flat tracts of land is the chief feature of this camp which will speedily be used for various purposes. It has a good millsite, with ample water power for all purposes and should in a short time become a centre of considerable importance.

## THE MINES AND PROSPECTS.



**SILVER CUP GROUP**—This group of properties consists of seven claims, viz., four full sized claims and three fractional claims. The full sized claims are the Silver Cup, Sunshine, Excelsior and Mountain, the fractional claims being the Silver Cup Fractional, Excelsior Fractional, and the Mountain Fractional Mineral Claims. The claims are situated on Silver Cup Mountain, near Eight Mile on the south fork of the Lardeau river, which is a distance of about four and one-half miles from Ferguson. From Ferguson to Eight Mile there is a very good wagon road, and the trail from the latter point to the properties is an excellent one. The method of transportation in winter is sawhiding on the trail and sleighing over the main road, whilst in summer pack mules are generally utilized on the trail, and wagons on the main road.

These properties are owned by the Sunshine Limited, a Company whose head office is in London England, with a British Columbia office at Revelstoke. The Sunshine Limited is a subsidiary company of the Lilloet, Fraser River and Cariboo Gold Fields, Limited, of London, England, with British Columbia office at Revelstoke, and which has large interests in the Trout Lake District. The principal developments are on the Silver Cup mine, which has been shown to be a property of very great value. This development consists of a cross-cut tunnel 415 feet long, which connects when in a distance of 350 feet, with the lower part of an incline shaft 183 feet deep, sunk on what is known as the Silver Cup Vein, above the tunnel. From the point of intersection, drifts have been run on this vein about N.W. and S.E. 66 feet and 211 feet, respectively, considerable bodies of high grade ore have been developed. Before cutting the Silver Cup Vein the crosscut tunnel encountered, when in a distance of about 300 feet, another vein, which has been designated the Big Vein. This new vein was unknown at the time of sinking the main shaft, but has turned out to be of very great value. Drifts have been run about N.W. and S.E. on such vein at this level, for distances of 33 feet and 73 feet, respectively, have been driven, showing up a large body of ore. Besides these workings crosscutting has been done from the main shaft and from the drifts. From such developments and surface indications, it is apparent that at least two other veins exist on the property. It has been clearly proven that the ore improves in depth, especially as regards its gold contents. A plan of development is under consideration by the management, and it is the intention to get considerably below the present workings.

THE SUNSHINE claim is situated immediately below the Silver Cup. Here, about 300 feet vertically below the Silver Cup mine, a drift has been run in for about 279 feet on what seems to be a continuation of the Silver Cup Vein. Two bodies of ore have been encountered, of the same character as that of the Silver Cup mine, and there is every indication to show that with further development this property will be proven to be of considerable value. Up to the present time little work has been done on the other claims of this Group, but owing to their situation and surface indications, there is reason to believe they will prove of large value. The ore of this Group consists of argentiferous galena with grey copper of a high grade in silver. Wherever this grey copper can be seen with the naked eye, a high value is assured. Specimens of this mineral have shown from 900 to 1,500 ounces of silver to the ton. The galena is fine grained and also carries high values. In both veins, but especially in the Big Vein, iron pyrites is also found, which carries high values in gold. The presence of this gold has been all the more marked in the deeper workings of the Silver Cup. Pending certain economies in the transportation of the ore, which are now being effected, the management have limited the output of the mine to 150 tons per month. During the winter about 500 tons of ore have been shipped to smelters in the United States.

some to Argentine, some to Everett and the balance to San Francisco. About 350 further tons are now in course of shipment. The average value of the ore is about \$135.00 per ton, large quantities of which are now ready for stopping. It is confidently expected that when further depth has been attained this property will be shown to be one of the most valuable in the Province, and from all indications it must be said this expectation is quite justified.

**ALPHA GROUP**—This group of claims is situated some seven miles from Trout Lake City, in a northerly direction, and some ten miles northwesterly from the Sunshine Group. The Group belongs to the Lillooet, Fraser River and Cariboo Gold Fields, Limited, referred to under the description of the claims forming the Silver Cup group, and it is to the energy and enterprise of such a Company in assisting to open up the properties of the District, that the measure of success already achieved is largely due.

The Alpha Group comprises the following, viz., the Broadview, Old Sonoma, Phillipsburg, and Alpha claims, and also the Cutter, Clipper, Colonial, Confederation, and Skiff Fractional claims. The development work on these claims have been confined principally to the Broadview and Old Sonoma properties. Starting from the main shaft sunk to a depth of about 118 feet on a galena outcrop on a galena outcrop on the highest point on the Broadview claim, the workings consist, to the north of the shaft, of four tunnels, below one another, driven on the vein. These tunnels are respectively 50, 100, 200 and 300 feet vertically below the mouth of the main shaft, and the longest tunnel being in a distance of 190 feet. South of the shaft the vein is similarly developed by two tunnels on the Old Sonoma claim, called respectively 50 foot tunnel south and 100 foot tunnel south. At a depth of 50 feet in the main shaft, a drift has been run to the north to connect with the 50 foot tunnel north.

The material through which the shaft was sunk varies considerably in character. The first 20 feet were sunk in galena ore, after which a more or less barren zone was passed through until a depth of 60 feet was attained, from which point to a depth of about 90 feet the material was a quartz impregnated with masses of iron oxides, well mineralized and carrying fair values. From the 90 foot level to the bottom of the shaft the character of the iron pyritic combination passed through changed and grey copper, and was largely impregnated with this material giving high values in silver and lead, and some value in gold and copper. The development work in the various tunnels has encountered very considerable bodies of ore, a good proportion of which contains grey copper. The 50 foot tunnel south and the 300 foot tunnel north showing up best in this respect. So far the work done on this Group has been of an exploratory nature, but it has served to show that the properties are of considerable value, and it is most probable that systematic development is only required to prove them to be of very great value. Such work is now in contemplation and will probably be commenced in the course of a few weeks.

**GREAT NORTHERN GROUP**—This Group is situated on the Great Northern Mountain on the south side, and about two miles from the north fork of Lardean creek at an elevation of 5,950 ft. It is reached by a good pack trail from Trout Lake a distance of six miles and five from Ferguson, and is very advantageously situated, free from snowslides, well watered and an abundance of timber on the ground.

The group consists of the Silver Queen, True Fissure, Great Northern, Hillside, Broadview, Old Sonoma, Phillipsburg, Alpha, Northern Light, Northland, St. Elmo, Yankee and Copper Chief.

The vein is a true one lying between slate hanging and serpentine foot walls, with an average width of about sixty feet, the strike is northwesterly dipping to the northeast and can be distinctly traced, by the cropping at least four miles. The vein is quartz with calcite, spathic and magnetic iron, grey and yellow copper and galena. On the hanging wall

there is a solid ore body from 14 inches to 5 feet thick, the central portion is quartz and slate, while the footwall has not been cut as yet.

Development is confined to five claims: **BROADVIEW**—This claim, the property of the Lilloet, Fraser River & Gold Fields Co. has several hundred feet of tunnel and shaft, there are about 800 tons of ore on the dump with an average value of \$30 in silver, gold and lead. There is another promising but undeveloped vein on this property.

**OLD SOXOMA**—This claim adjoins the Broadview on the east and is owned by the same Company. It has a shaft 30 feet deep and one tunnel 64 feet in length. Some very good ore has been taken out of this claim carrying grey copper assaying over 100 ounces in silver and from \$12 to \$15 in gold.

**GREAT NORTHERN AND HILLSIDE**—These claims owned by a Montana Company are developed by three tunnels 164, 83, and 30 feet respectively. There is about 200 tons of ore on the dump, besides what has been shipped, which runs from \$20 to \$260 per ton, with an average value of \$55 per ton in silver, gold and copper. At present they are under bond to an English syndicate.

**TRAE FISSURE**—This claim was staked by Charles Holden, T. Downs, and P. Walker in 1891, and is still owned by them. There is an immense body of ore in sight, and when reduction works are established it will be one of the chief standbys of the camp. One tunnel 84 feet in length and an open cut 20x30 feet comprises the work done. While there is some very high grade ore on the Fissure, still the great bulk is medium and low grade, which to be profitable would have to be treated in the vicinity.

**SILVER QUEEN**—Owned by John Staubert, under bond to Vancouver parties, is an extension of the Fissure to the north. There is one tunnel and two open cuts on this claim. There is a good showing of ore all it needs is development to make it one of the leading producers of the district.

**ST. ELMO AND YANKEE**—These claims lie to the west and above the Trae Fissure and Silver Queen. Ben Ramey and T. Downing are the owners. There is a 20 foot tunnel cutting an 18 inch lead samples of which assayed as high as 210 ounces of silver and 6 dwt. gold. It is the intention of the owners to thoroughly prospect this ground during the coming summer.

**ABBOTT AND WAGNER GROUPS**—The Abbott mine has a very fine showing at an elevation of 6,500 feet. On the Abbott claim a tunnel has been driven 323 feet to intersect at a depth of 400 ft. The main ledge is being exposed higher up and in width is from 12 to 15 feet trending N. W. and S. E., with four feet of clean galena, carrying carbonates and grey copper. The remainder of the ledge is concentrating. Results give over \$100 in silver and 75 per cent in lead. This ledge is traceable through the Heckla, Abbott, King William and Union. The vein occurs in a contact of lime and slate. The general formation of the country is a fine, soft brown slate. A belt of limestone, a mile in width, intrudes through the slate and is continuous right along the country for miles. This intrusion is the very foundation of the country. On the King William, in a direct line with the Abbott, the lode outcrops 50 feet high, and is 20 feet wide, the ledge being a fine laminated quartz, carrying grey copper and galena. The country being bare of undergrowth and timber the outcrop is so distinct that it can be seen for miles with the naked eye ranging as true and as straight as a die. Four hundred feet lower down on the King William an outcrop of quartz three feet wide is exposed and cut by a creek. About one foot of this is solid galena, carrying high values. A tunnel has been driven, cutting the vein at 10 feet. This is a true fissure, cutting the slate at right angles northeast and southwest. When this junctions with the main lode the possibilities are great. On the Abbott claim 400 feet higher up another parallel vein is exposed in the lime belt, which is regular and well defined right through the country 10 feet wide, half of which is solid galena. One hundred feet higher another ledge is exposed from six inches to a foot in width of galena impregnated with grey

ore  
Wa  
Lar  
the  
On  
car  
tra  
mai  
soli  
dri  
con  
bee  
bee  
ing

Mo  
Dev  
nin  
The  
lead  
sho  
whi  
ded  
with  
abo  
wel  
wid  
resu  
80 o  
29 p  
assa  
ame

of B  
plac

13  
vein  
min  
Lak  
ides  
400  
gave  
econ  
min  
the

is ru



ore. These lodes are all strong passing through the four claims of the Abbott group into the Wagner group, viz., Lucile, Francis Jewel, Emma Fraction, Queen Mary, Princess Marie, Lardeau Fraction, Lardeau McCartney Fraction, Duncan and Ella. All these claims are on the same line. A tunnel has been driven on the Francis Jewel, cutting the lode at 40 feet. On the Queen Mary and Princess Marie open cuts expose the continuation of the ledge, carrying identical values. On the Lardeau the solid galena is exposed on the surface and traceable right through the Hecla into the Duncan. In all there are four claims on the main ledge. The outcrop on the Duncan is composed of iron, rose quartz, and seams of solid galena standing out of the ground 50 feet and being 50 feet wide. A tunnel has been driven 100 feet and a crosscut towards the dip has been completed 45 feet, cutting the same continuous body of ore 60 feet from the mouth of the tunnel. A good working winze has been sunk following down the vein an angle of 55 degrees. At this depth a crosscut has been driven 10 feet towards the hanging wall. A fine body of ore has been met with, carrying the same mineral of solid galena and grey copper.

**HOLY MOSES GROUP.**—This property consists of four claims named the Holy Moses. W. & K., Pilot Knob, and Bald Knobber, and is owned by the Lardeau Mining and Development Co. of Revelstoke, B. C. It is situated on the well-known Horne ledge about nine miles from Ferguson. There is good communication by wagon road from this point to Thomsons Landing and there is a good trail over the last nine miles to the property. The lead is known as a contact vein lying between lime and talcose schist both being dykes and showing for a distance of over ten miles. There are also two other parallel ledges one of which measures from 30 to 40 feet in width. A considerable sum of money has been expended on the property and a tunnel run in on the property for a distance of about 50 feet, with a crosscut at the end, exposing twenty feet of a ledge heavily mineralized, this ledge is about 35 feet wide at the surface with heavy iron capping, the main drive being in quartz well mineralized and showing several stringers of clean galena from  $\frac{1}{2}$  inch to 8 inches in width. The crosscut runs almost entirely in carbonates. Several assays have been made resulting as follows: Silver, 79.5 ounces, 50 per cent lead, and  $5\frac{1}{4}$  per cent copper—silver 80 ounces—silver 129.7 ounces, 68.9 per cent lead and 2.9 per cent copper—silver 67.6 ounces 29 per cent lead and 4.7 per cent copper. The last mentioned was taken from a general assay of the carbonates. These properties are well supplied with timber and water and are amongst the most promising in the Lardeau district.

The Company owning the above properties is registered at Victoria B. C. under the laws of British Columbia, the date of registration being August 26th, 1896. No stock has been placed upon the market, the original owners being the sole shareholders.

**THE OTTAWA.**—This property is situated on the south fork of Lardeau creek, about  $1\frac{1}{2}$  miles from the famous Silver Cup mine in a southeasterly direction. It is a contact vein of lime and slate and yields very high assays, in fact outside the best ore of the Reco mine in the Sloean and the Arlington and Meteor mines on Springer creek, lower Sloean Lake, there is no higher grade of ore found in the Kootenay than the chlorides and bromides found on the Ottawa. An average assay from samples taken from this property gave 400 ounces silver, 10 per cent copper, and 45 per cent lead per ton, and picked specimens gave results of from 1,200 to 5,000 ounces of silver to the ton. It is favorably located for economical working, has good ground for mine buildings and has an abundance of good mining timber, and on account of its position facing the sun the snow goes off very early in the spring. This claim is owned by Henry Schultz and Jack McGregor.

**MOUNTAIN VIEW and BLUE JAY.**—Are located at the head of Silver Tip creek and is reached by way of the North Fork of Lardeau creek. A wagon road extends for a couple



of miles up this stream and after reaching it a trail leads up to the property by way of the Big Five claim. The ledge is about 15 feet in width and contains from 6 to 12 inches of clean ore the balance being good concentrates. Returns from assays taken on the clean ore and concentrates mixed give \$57 to the ton in silver. The lead is very strong and extends plainly in sight for over 1800 feet and ore has been knocked from it at intervals for the entire distance. The property is owned by Messrs. J. and P. Comerford. Considerable work is being done on this property and so far the operations have been very satisfactory.

**BRUCE.**—This claim is situated about  $\frac{3}{4}$  of a mile N.E. from Ferguson and is approached by a trail leading from that town. The ledge on this property is about 40 feet wide and carries galena and carbonates. Samples of the carbonates have been assayed and gave returns of \$22 in gold. The Bruce adjoins the Oriental and is on the Great Northern lead. It is owned by Arthur Cunningham.

**COPPER QUEEN GROUP.**—This group comprises 3 claims, the Copper Queen, Silver Cup No. 2, and the Montana, and is situated on the mountain side about four miles down the lake from Trout Lake city. The lead on these claims is very well defined and has been worked considerably. Assays from the product of the operations give \$40 and 7 ounces silver.

**AMERICAN.**—This property is situated at the head of Haskins creek a tributary emptying into Haley creek about two miles from its mouth. The lead, about 14 inches in width, lies in a formation of gray slate, and carries a galena ore which assays from 60 to 80 ounces of silver and 80 per cent lead. All the work done, and it is considerable, shows the vein to be continuous also that the quantity and quality of the ore remains unchanged. A good trail commences about  $1\frac{1}{2}$  miles from the foot of Trout Lake and leads up the mountain, about four miles, to the claim.

**THE ALICE.**—This group lies about 4 miles north of Trout Lake and 2 miles from the Silver Cup mine, and is reached from 8 miles down the lake by a trail leading to the property. The ore is a quartz gangue carrying galena and gold and lies in a formation of black slate and porphyry, which can be traced clear across the claims. The ledge is about 5 feet in width and has been worked extensively giving returns of 23 ounces silver and \$53 gold. The ore shipped was taken out by way of Trout Lake City to Thomsons Landing.

**BLACK DIAMOND.**—Is located between the south fork of Lardean creek and Haley creek, and is reached by a trail starting from the foot of Trout Lake and extending a distance of 5 miles to the property. The lead contains a body of clean ore ranging from 12 to 18 inches in thickness, the character of which is a mixture of galena, iron and copper, lying between walls of lime and slate. Assay values average 87 ounces silver, \$16 gold, 42 per cent lead and  $3\frac{1}{2}$  per cent copper. The work done on this claim consists of an open cut of 20 feet and a tunnel of 8 showing the vein at a depth of 25 feet to be increasing in value. The Copper Leaf an adjoining property is staked on a parallel lead which shows about 12 inches of a yellow copper ore lying in a slate formation. Very little work has been done on this claim, but what has resulted in returns, from samples taken from the workings, of \$63.82 copper value, 18 ounces silver,  $7\frac{1}{2}$  per cent lead and \$2.60 gold.

**CELTIC.**—This claim is situated on the Horn lead on the north fork of Lardeau creek about 8 miles from Ferguson. Three known veins or ledges cross the claim, on two of which

any way of the  
12 inches of  
the clean ore  
and extends  
ervals for the  
Considerable  
satisfactory.

is approach-  
feet wide and  
ved and gave  
orthern lead.

opper Queen,  
out four miles  
ined and has  
and 7 ounces

a tributary  
t 14 inches in  
from 60 to 80  
le, shows the  
nchanged. A  
up the main-

miles from the  
so the prop-er-  
ation of black  
s about 5 feet  
and \$53 gold.  
g.

ek and Haley  
ing a distance  
from 12 to 18  
copper, lying  
6 gold, 42 per  
n open cut of  
sing in value.  
ows about 12  
been done on  
workings, of

ardean creek  
two of which

assessment work is done, showing the vein on the southeast contact, one foot wide at the outcrop, to be 3 feet wide when opened with two inches of clean ore. On the northwest contact the vein is large, on which two shafts have been sunk, one 18 feet deep 6x8, the other 13 feet deep 4x7, exposing only the hanging wall. Assays from this vein has given \$3 gold 62 ounces silver and 75 per cent lead. This claim is free from slides, well watered and timbered with trail through it to the Duncan. Owner, Archie McDonald, Trout Lake.

**PRODIGAL GROUP.**—The Trout Lake district so noted for its variety of ores, gold, silver, lead copper, antimony, cobalt, bismuth, and asbestos, is also rich in molybdenum. This valuable mineral is chiefly found on the Trout creek slope, a tributary of Trout lake  $2\frac{1}{2}$  miles from Trout Lake City. The strata in which the molybdenum is found consists of hornblendic gneiss and micaceous rocks. Through these strata from northwest to southeast and dipping southwest, runs five distinct veins, these veins vary in width from nine inches to eighteen inches. The contents of the vein are molybdenite, molybdic ochre, and small quantities of copper pyrites, gold and silver with a gangue of quartz and a little felspar. The ore can be traced for considerable length, and in places masses of the ore can be found broken away from the vein and exposed in the slide rock. On these veins two claims are located, viz., the Prodigal and molybdenum. On the latter prospective work has been done showing as before stated five veins well defined and well mineralized. The assays made, so far, demonstrate the presence of gold and silver, showing from a strong trace, at the surface, to \$12 in gold and 8 to 12 ounces in silver. The vein is ten feet wide with good wall and capable of a large output. On the slope where the vein crosses, the hill rises abruptly for 1000 feet which gives the owners a good chance to easily and cheaply develop the property. The claims are conveniently situated and free from snow slides,  $1\frac{1}{2}$  miles from the main wagon road and one mile from the surveyed railway line. They are, also, well timbered and watered. Owners, A. McDonald, and T. R. Davey.

**DAVEY GROUP.**—Comprises three full claims and two fractions of claims, viz.: Davey, Coon, Diamond Jubilee, Davey Fraction and Acme Fraction. Situated on the south fork of Lordean creek at the Eight Mile or Silver Cup bridge, 4 miles from Ferguson. On the claims three veins are exposed. The southeast or No. 1 is 8 feet wide, composed of quartz, pyrites, copper and galena. The centre of this vein carries a streak of talcose slate (locally known as graphite) friable quartz, pyrites, copper and a little galena,  $2\frac{1}{2}$  feet wide with two distinct walls which has given fair assays in gold. The centre or No. 2 vein is three feet wide showing mineral, and is 60 feet from No. 1 vein. No. 3 vein is 2 feet wide at the outcrop, also shows mineral and is 50 feet from No. 2 vein. Assays give \$10 gold, 50 ounces silver and a small percentage of lead and copper. The main wagon road leads to the claims. Camps and other necessary buildings erected, with good site for mill, and motive power for all purposes. Owners, James Snell, T. R. Davey, and Frank Trainor, Trout Lake.

**MOLLY PACK LEDGE.**—This vein has been staked continuously for over two miles on Gainer creek and Golden Gulch creek, a tributary of the former. The trend of this vein is the same as many others in the district, viz., northwest and southeast and dips about 50 degrees to the west. Some of the prominent claims on this lead are: The Moonbeam, Red Rover, Green Hill, Floback, Beauregard, and Molly Mack. A large amount of work has been done on these claims and the owners have been justified in their expectations by uncovering from four to six feet of clean ore. These claims are within three miles of a good wagon road, and are reached at present by an A. 1 pack trail.

**HORN LEDGE.**—This ledge is situated at the headwaters of the north fork of the Leadean river, and there are upwards of twenty claims staked on it. Of the following good claims very little is read or heard, viz., The Boss Jenny Lind, Ski, Rob Roy, Highland Chief, Centre Star, Yankee Girl, Iron Horse, Canadian Girl, Celtic and others. The trend of this

vein is northwest and southeast, and dips about 55 degrees to the west. The vein shows a big iron capping carrying galena and wherever any work has been done and the capping removed, large bodies of ore are exposed. Assays made of ore from different claims give from 60 to 130 ounces silver, upwards of 60 per cent lead, and \$4 gold. The vein varies from two to five feet in width. It appears on the slope of the Little Duncan and a group of three claims staked on it are known as the Holy Moses group. Thence across Gainer creek, the head of the south fork of Lardeau creek, then over the summit and across the headwaters of Haley creek, and down the west side of Lake creek, in all a distance of about twenty miles. What is needed to bring the above mentioned claims into the front rank as producers is the investment of a small amount of capital in the construction of "works" to treat the ore, at the mouth of either Gainer creek, Surprise creek, Pass creek or the main north fork of the Lardeau river. That portion of this district nature has generously supplied with water, and water-power, also a boundless supply of fine timber.

**LADE GROUP**—Is situated on Gainer creek. It was the first discovery of free gold made in the district. Located last year by the Lade Bros. It comprises 4 claims viz., the Olive Mabel, Foundation, Little Fred and Goldenville, on all of which considerable work has been done. On the Olive Mabel, however, a great deal of extra work is now being done, and it was also from this claim that the shipment, which netted the owners \$220 to the ton was made. A tunnel is now being run to tap the lead at a depth.

**GEOLOGICAL FEATURES**.—On the north side of the properties worked is a large area of limestone, lying on the south are a series of foliated rocks consisting of argellites, slaty and schistose distinctly micaceous in places. Throughout the argellite quartz veins, bands and seams are much in evidence, some having a northwest and southeast trend, whilst the greater number are running diagonally across the formation until they junction with the lime. In the latter or cross veins the native gold and tellurides are met with, varying in width from one to twelve or more inches and exceedingly rich in places. Looking at these veins and seams from a miner's point of view the natural conclusion is that they are shoots or feeders to a main or true fissure vein which requires time and money to demonstrate. At the present capital is needed to carry out a system of exploratory work. The first would be to follow the larger ore seams to the true vein. When this is reached the mines could be at once systematically laid out quickly opened, and development pushed ahead, so that large bodies of ore could be easily handled and economically marketed. Returns from work already done speaks volumes for the future of the Lade Group as a gold producer and it will be at no distant day when this property will be contributing its golden share to the stores of the world's wealth.

**KLONDIKE**.—This property is situated at the head of Humphries creek about three miles from Trout Lake City, and comprises 4 claims. They are among last summer's new strikes and have as fine a showing as any property in the district. Considerable work has been done, mostly stripping, and has exposed from 6 to 12 inches of gray copper ore heavily impregnated with bromides and black sulphurets and giving 600 ounces silver and 15 per cent copper to the ton. A better idea of the value of the ore can be had from the results of a mill test which gave 145 ounces silver, \$8 gold, 3 per cent copper and 2½ per cent lead. A good trail leads up to the property which is owned by Messrs. Nat Lay, Sydney Graham and Bert Fowler.

**The EMPIRE**.—Is situated on the headwaters of Cariboo creek and adjoins the Wagner group on the southeast. Its formation, which is a contact of lime and slate, is traceable for over 40 miles and upon which are located such well known properties as the Black Prince, Bad Shot, Big Five and C.P.R. groups. The ore is silver and lead, copper and gold, assay values of which go \$125 per ton. The vein is from five to ten feet wide showing from one to four feet of clean ore, the balance of the vein being of high concentrating quality. At pres-

ent this group is reached by pack train from Dawson City the terminus of the Duncan and Lardo railway, which will be constructed in the near future. From Dawson City to the Empire group, the distance of which is only 3 miles, the nature of the country is such that a good wagon road can be constructed at medium cost to connect this group with the proposed railway. The group at present is 6 miles from steamboat navigation on the Duncan.

**The ETHEL.**—Is one of the best propositions discovered in the Trout Lake district. It was located last year by Messrs. Bird, Moore, Moyer and Lauthers and was bonded to the Commercial Mining and Development Co., this fall for \$40,000. This property is situated about three miles from Trout Lake City, with which town it is connected by trail, and has crossing it in a contact of lime and slate, a vein 8 feet in width which contains very close upon 4 feet of solid ore. The ore is of the dry variety and its great richness is due chiefly to the quantities of black sulphurets, bromides and gray copper which it contains. It also carries a fair percentage of copper besides a reasonably good gold value. Two tunnels have been driven on this prospect; No. 1 which is in ten feet and from which, already, 250 sacks of ore has been shipped, and No. 2 which is in 30 feet, in the face of which the ore is commencing to come in, this tunnel is 150 feet below No. 1. From the first shipment of 50 sacks a gross return of \$70 per ton was received, this comparatively small figure was due to the fact that no attempt was made to sort the ore, good, bad and indifferent being thrown in together. The result of the last shipment of 6 tons is not yet known, but as more care was taken in preparing the shipment, it is expected that the returns will be proportionately large. However, a fair idea can be formed from the numerous assays taken, and competent judges place the average value at 200 ounces silver, \$5 to \$8 gold and 5 per cent copper. The maximum figure, obtained from a picked specimen, was 3,822 ounces silver, and the minimum, from the granulated refuse of the vein, was 28 ounces.

**SILVER BELT.**—This property is owned by Messrs. Dobie and Johnstone and is situated on Gainer creek. Recent development operations has exposed a vein 4 feet in thickness and containing several stringers of ore varying from two to ten inches wide. The lead is very strong and can be traced clear across the divide. The work done consists of an open cut of 14 feet and a tunnel of 10 on the lead, and from the face of the working some very nice samples were taken which assayed 120 ounces silver, \$5 gold, 55 per cent lead and 2 per cent copper. A good trail leads to the property which is well watered and timbered.

**BLACK EAGLE and SUNSET.**—These two claims are situated on Seven Mile creek about 3 miles above Ferguson and are owned by a Vancouver company. The price paid for them was \$10,000. A great deal of work has been done on them consisting of over 80 feet of shafting and tunnelling, and has resulted in showing up a vein of about 4 feet in thickness carrying a paystreak of 6 inches of a very good grade of ore, averaging 60 ounces silver, 60 per cent lead and \$10 gold. This property is only a short distance from the main trunk road with which it is connected by trail.

**BAD SHOT.**—This property is conceded to be one of the best properties in the district and has been developed extensively. It is located on the great lime dyke which traverses the centre of the division for a distance of over 40 miles. The work done consists of an incline tunnel of 80 feet on the vein, then going some distance away a crosscut was driven tapping the lead, and after some back drifting was connected with the incline tunnel. At the angle formed by the crosscut tunnel and drift a winze was sunk to a depth of 50 feet and drifts run right and left from the bottom, making in all about 500 feet of work done. This work has shown up a considerable chute of high grade ore of about 30 inches in thick-

ness, composed of about 6 inches of clean ore and 2 feet of concentrates, an average assay of which gave 254 ounces silver, and 75 per cent lead. A considerable amount of ore is now lying on the dump, which has been taken out during the course of development operations. A very good trail leads up to the property from Ten Mile City about 3 miles distant. The owners of this property are Fred Campbell, Fred Johnston and Wm. Johnston.

**MABEL GROUP.**—This property is situated at the head of Eight Mile, one of the creeks emptying into Trout lake on the northeast side, and has a showing equal to anything in the country. It consists of the following claims: The Mabel, Virginia, Rainy Lake and Norah Lee. On the Virginia two leads cross each other at right angles, each of which contain a fine grade of ore. The new strike, made this summer, cuts the formation and the work done on it exposes some 4 feet of ore, the character of which is both fine and coarse cube galena carrying also a considerable quantity of copper, besides a 6-inch streak of carbonates. The assay value of the ore of this vein was silver, 96 ounces; gold, \$10; copper, 7 per cent; lead, 82 per cent.

On the other lead considerable work has been done but owing to the broken up nature of the vein very little progress has been made beyond getting some very fine specimens of ore of ore of a coarse cube galena, assays of which have run upwards of 84 ounces silver, a large percentage of lead and a fair value in gold.

Adjoining the Virginia is the Mabel. This property shows up a streak of some six inches of galena ore and carbonates, on which several feet of work has been done, showing the vein to still possess the high grade quality of its product. Assays give \$18.60 gold 64 ounces silver, and 60 per cent lead. Adjoining the Mabel on the southeast are the Norah Lee and Rainy Lake and Golden Gate, all showing the Virginia lead, which crosses these claims, wherever exposed, to be continuous and containing more or less ore.

A parallel lead to the Golden Gate is the Hidden Treasure which has exposed a very strong lead of gold ore. A shaft has been sunk for 11 feet and from the vein at the bottom, which is about 4 feet wide, specimens have been taken which average \$20 in gold and 10 ounces in silver. The owners of the above are, Messrs. E. M. Morgan, Levatt Hamilton Munro and Irwin.

Other claims on the Virginia lead are the Silver Cord and I.X.L. This last named property has a showing of 28 inches of clean galena ore exposed on the hanging wall and from 6 to 8 inches of carbonates on the footwall. A tunnel of 9 feet has been driven and the character of the ore appears to be improving. Owners are Messrs. McCord and Johnson.

**COLUMBIA and LOTTON Groups.**—These two groups comprise a total of ten claims, and the ore throughout averages 171 ounces silver and 75 per cent lead. Considerable work has been done on the Lotton and consists of an incline shaft sunk to a depth of 82 feet. The results were highly satisfactory and some very fine samples of ore containing galena Iron and yellow copper were obtained. A crosscut will be driven from the bottom of the shaft and the width and richness of the vein determined. Owing to the vein having straightened up it was left at a considerable distance from the bottom of the shaft and it is expected when the crosscut is completed that a chute of fine ore will be encountered.

On the Columbia an incline shaft has been sunk to a depth of 56 feet and shows up very well. The pay ore has a thickness of 6 feet in a ledge 25 feet wide, and carries a high grade of galena ore. These claims are situated on Canyon creek and are reached by means of a good trail commencing about two miles from the foot of Trout Lake.

**PEDRO Group.**—This property is situated up Canyon creek and comprises three claims, the Pedro, Black Jack and Solo. It contains two veins and as a result of development, a body of exceedingly high grade ore has been exposed which gave returns on being subjected to a test, of 2106 ounces silver, \$5 gold and 17 per cent copper, making a total

verage assay of  
t of ore is now  
nt operations.  
distant. The

file, one of the  
ual to anything  
ainy Lake and  
of which con-  
ation and the  
ine and course  
streak of car-  
\$10; copper, 7

ken up nature  
e specimens of  
ounces silver, a

ak of some six  
done, showing  
\$18.60 gold 64  
are the Norah  
h crosses these

exposed a very  
at the bottom,  
in gold and 10  
evatt Hamilton

his last named  
nging wall and  
driven and the  
l and Johnson.

a total of ten  
lead. Consider-  
o a depth of 82  
ore containing  
om the bottom  
he vein having  
shaft and it is  
ntered.

shows up very  
es a high grade  
l by means of a

omprises three  
ult of develop-  
burns on being  
making a total

value as silver stood then, of \$1221.76 per ton. Then there were other assays, one from the upper and the other from the lower vein which gave returns from the former, 2021.44 ounces silver, and the latter, 1233.74 ounces silver per ton. These samples were not tested for gold or copper so it is not known what the values in these minerals would have been. Both of these veins are strong and well defined, being traceable for a considerable distance. The upper vein is from 2½ to 3 feet wide and the lower about 2 feet containing a galena ore heavily impregnated with gray copper. A good pack trail leads up to these properties. Owners, Sundin Bros. and A Lindgren.

**BANNOCKBURN Group**—Comprising seven claims as follows, Bannockburn, Silver Reef, Silver Bottom, Buckoye, Fossil, Evergreen and Iron Mask, is situated on the opposite side of the lime dyke from the Abbott and is about one mile distant from the Wagner. It was one of the earliest locations in that section of the district, but on account of the great difficulty, until recently, of getting at it it has been to a certain extent overlooked. Three leads of considerable size cross the claims and they have been exposed in many places for the purpose of testing the ore. The lead on the Bannockburn contains from two to five feet of clean ore and this showing has been exposed for over 700 feet. Assays give 50 ounces silver, 65 per cent lead, and \$11 gold. The Fossil has pay ore for a thickness of four feet and is developed by means of a tunnel 20 feet long run on the lead. Assays give 96 ounces silver, and 14 per cent copper. The work done on the Buckeye consists of stripping the lead for over 200 feet, thus exposing 14 inches of clean ore assays from which give a total value of \$137. The Iron Mask has no work done on it as yet, and, so, little is known of it beyond ascertaining that the lead has a width of 100 feet, the croppings of which went \$5.50 in gold. The claims cited above are located on different leads and are representative of each vein. These properties can be reached either by way of Ferguson, Trout Lake City or the Duncan river.

**HORN NO. 2.**—Some very rich claims are located on this lead, which have come very prominently to the front during the early part of this fall. Among those which are entitled to special notice are the Westfall group of 4 claims, the Horn No. 2 and the Black Diamond group of three claims. The first two groups are situated northwest from and adjoining the Bad Shot mine, and have crossing them a very rich vein of ore averaging 18 inches in width. The ore is galena and gray copper and runs 300 ounces silver to the ton, and on the footwall is 12 inches of carbonates which also gives a good assay. On the Black Diamond, a further extension of the foregoing claims, the ore body is a foot and a half wide and contains an ore which runs from 600 to 1000 ounces in silver to the ton. The Black Diamond No. 2, one of the claims in this group, is under bond for a large figure. Considerable work will be done on it this fall. These groups can all be reached by trail from the south fork of Lardeau creek.

**J. C. Group.**—Near the head of Lake creek is located the J. C. group of claims owned by Jno. Chisholm et al. The ledge on this property is a large one and contains a vein of over 5 feet of fine concentrating ore. Considerable work has been done on these claims and has gone to show that the vein is continuous and with values remaining about the same. Assays, 50 to 60 ounces silver and 74 per cent lead.

**EVERGREEN.**—This claim is situated on the northeast arm of Arrow lake and from its present appearance is likely to develop into a very good property. It has a lead of about 3 feet wide which has been stripped for thirty feet, showing a very fair body of concentrating ore. Assays give returns of 75 ounces silver and \$19 in gold.

**THE MOHAWK.**—This group of claims is situated on a creek of the same name, a branch of Fish creek, a stream emptying its waters into the northeast arm of Arrow lake. It has three leads traversing its entire length, all within a distance of 400 feet and as the result of recent development operations, shows up remarkably well. It is in the same mineral belt as the Great Northern and from sample assays a return of 93 ounces silver 65 per cent lead and \$14 gold has been obtained. Owner, Ben Ramey, Thomsons Landing.

**THE BEATRICE.**—Another Mohawk creek property and owned by F. Fulmer and Bonchie Bros., was bonded during the summer to Messrs. McCulloch and Beer of Nelson for \$150,000. The terms of the bond allows of a considerable time before the payment falls due. It has a remarkably fine showing of galena ore running very high in silver.





name, a branch  
ow lake. It ha  
as the result of  
mineral belt as  
cent lead and

er and Bouehie  
son for \$150,000  
due. It has a

## SUPPLEMENT.

April, 1899.

Since the pamphlet was issued three of the following claims have become shippers, viz., the Beatrice, Nettie L. and St. Elmo:

**ST. ELMO**—One of the most promising properties in the camp is the St. Elmo. This claim together with the Yankee makes up the St. Elmo group, which adjoins the Great Northern to the northeast. During the greater part of the winter two men have been engaged doing development work and taking out ore. They made a shipment in January of five tons and the returns gave the satisfactory result of 113 ounces silver, \$3.80 gold and \$17.09 lead, making a total value per ton of \$85.18. The work done on this property up to the present consists of a tunnel on the vein 47 feet in length and an open cut of 30 feet. At the end of this open cut another tunnel has been commenced to crosscut the vein at a depth of 125 feet, and it is expected when this is completed a very fine body of ore will be available for shipping purposes. The width of the ore body from which the five-ton shipment was made is about 18 inches and as far as present indications go gives promise of increasing in bulk as the work progresses. The owner of this property is Hugh McPherson, Trout Lake City.

**THE NETTIE L.**—This property situated about  $1\frac{1}{2}$  miles from Ferguson is owned by the Great Western Mines Ltd., headquarters Revelstoke, B. C. It is developed up to the present by a crosscut of over 175 feet and a drift, running north and south, of 80 feet also a winze of some 21 feet. In running the crosscut and when in about one hundred feet, two leads were encountered which did not appear on the surface, each containing a considerable quantity of mineral. The first of these blind leads was 8 feet and the second 5 feet thick, and the latter of these carries a two-foot streak of a fair grade of ore. After leaving these veins and continuing the crosscut for the main ledge, nothing was encountered until in over 160 feet when a body of magnetic iron 7 feet in thickness was encountered and run through. Lying next to this was  $2\frac{1}{2}$  feet of carbonates, then a layer of steel galena 2 inches thick and finally the latest strike of 18 inches of solid galena and gray copper.

A little to the right of the point where the drift cuts the crosscut tunnel a winze was commenced and is now down 21 feet. The ore streak here varies from 8 to 18 inches in thickness. Work is being pushed ahead on both the north and south drifts, the former is in about 50 and the latter about 30 feet. The north drift has been driven alongside the ore body which is now being taken down and sacked ready for shipment. A carload will be sent to the smelter during the forepart of May. The ore in the south drift lies in three stringers in the face of the tunnel, on the hanging wall the streak is 18 inches in thickness, about midway there is six inches of gray copper and on the footwall about four inches. It is the intention of the manager to continue the winze down to a depth of about 75 feet. After proving the vein to this depth it is proposed to drive a crosscut of about 400 feet to tap the chute at a depth of over 300 feet. Some eleven assays were taken on the ore, the ledge filling and the wall-rock resulting as follows: No. 1 sample, containing native silver, run 201.28 ozs.; No. 2, zinc, 931.74 ozs.; and No. 3, gray copper, 3,170 ozs. silver to the ton. The ledge filling and wall rock, from which eight assays were made, gave an average of 57 ounces in silver to the ton.

**THE BEATRICE.**—About this property very little was known last year, since then, however, it has developed into one of the richest mines in the Lardeau. It is situated on the summit of the divide between Mohawk creek and Goat creek and is owned by Beer Bros. of Nelson. The work done consists, principally, of a shaft 30 feet deep, and two crosscut tunnels of 45 and 140 feet respectively. In the shaft the vein is 9 feet wide of solid ore from which over 2,000 sacks of ore was taken. The lower tunnel which is 140 feet long cuts the vein at a depth of 70 feet. Drifting on the vein—which here shows up a width of 30 inches of solid ore—as the shaft is approached it is widening out and it is expected that when the drift is directly underneath, the vein will show the same width as that contained in the shaft. A 70-ton shipment will be made as soon as navigation opens up the returns from which, according to tests made, will be about \$125 to the ton in silver and lead.



**THE SILVER QUEEN.**—This property has one of the largest showings of any claim in the camp. For over thirty-five feet ore is to be met with in more or less quantities. In the crosscut tunnel which is now driven over 195 feet, the first ore to be met with comes in at about 45 feet from the present face of the tunnel. The streak is about eight inches wide and runs 188 ounces to the ton in silver. A space of about ten feet is passed composed of ledge matter heavily impregnated with iron and with small quantities of galena showing up here and there, then a body of two feet of solid zinc ore and lying next to it ten feet of a fine white quartz with masses of galena interspersed. At times when cutting this part of the vein, after a shot, the whole face of the tunnel would be one mass of glittering ore giving the impression that a huge body of galena had been encountered, this would pass in the next shift only to occur again. It is the impression at the mine that this section of the vein will, when a greater depth is gained, pass into a solid mass of ore. The galena contained in the quartz is very brittle and crumbles away under pressure of the fingers into perfect cubes, from the most minute particle to the size of a pea. Next to this body lies about ten inches of mixed iron and galena ore, iron predominating. After passing through this streak eighteen inches good, of steel galena was encountered, this was the latest strike. The steel galena has been left behind some fifteen feet or more and the men are working through a ledge matter heavily impregnated with iron and galena, from the appearance of which it was thought that another body of ore was at no great distance. This property, a couple of months ago, was bonded by Jas. Dixon representing Vancouver parties. The amount of the bond was \$25,000.

Regarding this pamphlet it may be said that there are a large number of claims staked, many of them with fine surface showings, which have not been mentioned on these pages. The properties herein mentioned comprise groups; with very few exceptions, and thus represent something over 150 claims. Last year there were over 400 claims recorded in Trout Lake, but as these have had little development work done on them, it was thought wiser to postpone mention of them until a later date.

It is worth while mentioning still farther two properties, the Bannockburn and Silver Cup, which have been dealt with at length elsewhere in this book. The former of these properties, the Bannockburn, was sold only a couple of months ago, to Kaslo parties for \$20,000 cash, and it is the intention of the purchasers to place it on a shipping basis as soon as possible. The latter, Trout Lake's banner mine, has been undergoing a very thorough course of development which has resulted, besides the clean ore taken out, of placing 1,000 tons of concentrating ore on the dump besides several thousands lying in the mine, awaiting better transportation facilities, the value of which runs from \$27 to \$30 per ton in silver. A few weeks ago 6 carloads of ore were transported to the Landing for shipment, making a total of over 850 tons which have left this mine for the smelter. Running with a full working force the Cup could ship 200 tons of ore per month.

Another thing which is of importance is the fact that the steamer has been built and will make regular trips between Trout Lake City and Selkirk during the present season. It is a large boat and will handle admirably the freight or supplies which will be required by persons going into the Lardo and Duncan sections either to prospect or develop their claims.

We should also mention the Old Gold and Primrose properties, as recent developments warrant us in doing so. The development on the Old Gold is being pushed with additional force of men this spring. The main or working tunnel is now in over 200 feet and in addition to this there will be another tunnel started on the lead at a lower level. There is considerable ore on the dump and the recent smelter test gives values of \$132.80 per ton from ore on the dump taken from under four feet of snow. This is certainly a very promising property and will soon be a regular shipper.

The Primrose property lies south and east of the Old Gold and on a separate lead and is being developed with excellent results. The lead is a strong one and carries high values, assays giving from \$600 to \$725 in silver and from 11 to 23 per cent copper. A working tunnel is being driven on this property which is now in nearly 200 feet. There is considerable ore in sight and the property should soon become a shipper.

of any claim in  
titles. In the  
th comes in at  
ches wide and  
posed of ledge  
owing up here  
n feet of a fine  
his part of the  
ore giving the  
ass in the next  
f the vein will,  
ntained in the  
perfect cubes,  
out ten inches  
is streak eight-  
like. The steel  
king through a  
f which it was  
ty, a couple of  
amount of the

claims staked,  
n these pages,  
and thus ren-  
rded in Trout  
ought wiser to

rn and Silver  
rmer of these  
lo parties for  
basis as soon  
very thorough  
placing 1,000  
me, awaiting  
ton in silver.  
ent, making a  
h a full work-

been built and  
nt season. It  
e required by  
their claims.  
evelopments  
h additional  
and in addi-  
here is cou-  
er ton from  
y promiaing

lead and is  
igh values,  
orking tun-  
onsiderable



---

**"TOPIC" PRINT**  
**Trout Lake City, B. C.**  
**A. D. 1898**

---



