

# AMBELLFORD ONT.

The Electric  
Power Centre of  
Central Ontario



LPF5012  
1912  
CA2

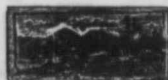
1207583

HARVARD  
UNIVERSITY  
LIBRARY

# CAMPBELLFORD CANADA



THE GREAT CHEAP POWER TOWN  
ILLUSTRATED BY  
THE PUBLICITY AND INDUSTRIAL  
BUREAU



MANUFACTURERS  
CAPITALISTS, FINANCIERS,  
AND EVERYBODY INTERESTED

☞ will be furnished with further and more specific information promptly and  
gratuitously upon request. Address:

THE MAYOR, THE CHAIRMAN OF THE BOARD OF TRADE,  
or THE PUBLICITY COMMISSIONER,  
Town of Campbellford.

CAMPBELLFORD:  
The Despatch Electric Presses.

1912

0123456  
789101112  
131415

## Campbellford To Manufacturers :

GENTLEMEN,—

¶ We beg to introduce to your notice this Pamphlet, descriptive of the Town of Campbellford, Ontario, Canada, and its great resources of electrical power and free sites for manufacturing purposes.



HEALEY FALLS.

¶ If you contemplate establishing a branch of your business in Canada, we respectfully call your attention to the inducements offered by THE TOWN OF CAMPBELLFORD.

Yours very truly,

THE COUNCIL AND BOARD OF TRADE  
of the Town of Campbellford.

CAMPBELLFORD  
ONTARIO  
CANADA

## Campbellford, the Second Niagara of Canada,

POPULATION 3,233.

¶ The town is situated on the Trent River (the second largest river in the Province of Ontario). Township of Seymour, County of Northumberland East, Province of Ontario, Canada, twenty-two miles from Lake Ontario, on the line of the Grand Trunk Railway.



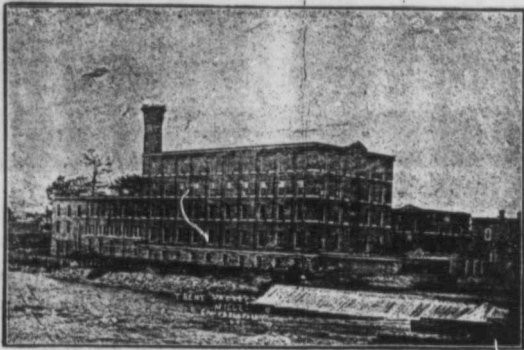
FRONT STREET, CAMPBELLFORD.

The River Trent passes through the Town, as does also the Trent Valley Canal System, which will be completed in 1914, and will connect the waters of Lake Huron and Georgian Bay, Lake Superior and the Great Northwest with Lake Ontario, thence through the St. Lawrence River to the Atlantic seaboard.

000000  
000000  
000000

## Our Manufacturing Industries.

1. The Trent Valley Woollen Mills, employing 300 hands.
2. The Weston Shoe Factory, employing 125 hands.
3. The Northumberland Paper and Electric Company, and
4. The Northumberland Pulp Company, employing 200 hands.
5. The Dickson Bridge Works Company, employing 40 hands.
6. The Hungarian Flour Mills, employing 12 hands.
7. Printing Establishments and two Weekly Papers.
8. # There are also two large Sash, Door and Building Mills.

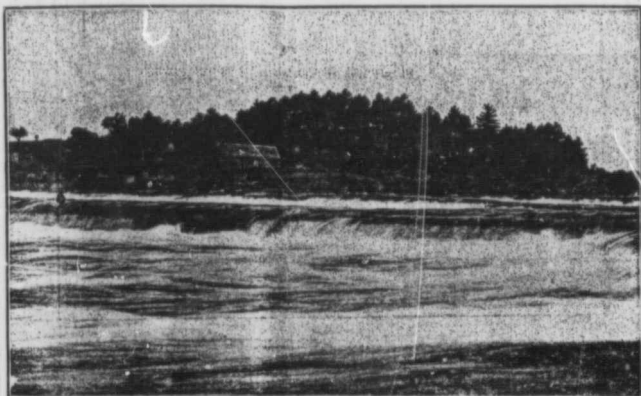


THE TRENT VALLEY WOOLLEN MILLS.

¶ A large force of men are employed at the two Power Plants now in operation and a much larger force will be employed when the other three large Power Houses are completed.

¶ Abundance of skilled labor can be secured here for almost any kind of industry at reasonable prices.

## Our Magnificent Water Power.



### MIDDLE FALLS.

¶ The Trent River, with its innumerable Falls and Rapids, is capable of supplying 50,000 Electrical Horse Power within a distance of five miles on each side of the Town.

Healey Falls, five miles above, has a drop of 76 feet.

Middle Falls, three miles above, has a drop of 25 feet.

Stephens' Dam, one mile above, has a drop of 23 feet.

Town Dam, at Railway Bridge, has a drop of 48 feet.

Haig's Dam, No. 9, one mile below, has a drop of 24 feet.

Maple Island Dam, three miles below, has a drop of 36 feet.

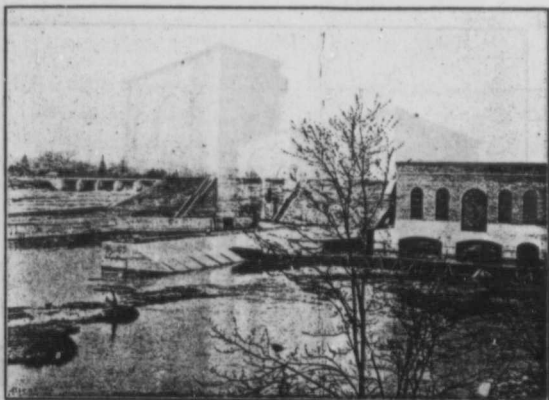
Total drop - - - - - 232 feet.

¶ Only a small portion of this Great Energy is now being used.

The Seymour Power Company, 5,000 h.p.,

The Municipal Plant, - 2,500 h.p.,

leaving about 40,000 h.p. to dispose of.



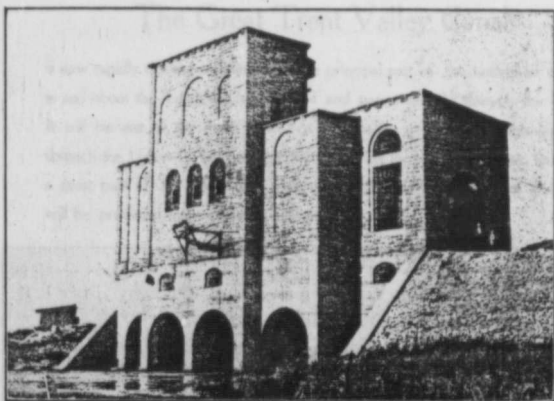
## Campbellford's Municipal Power Plant.

¶ The Town of Campbellford owns a Power Plant costing over \$150,000 to date. It is capable of developing 5,000 h. p. Use is now being made of only about 2,000 h. p. for Town lighting and Municipal purposes.

¶ The Town offers to any manufacturing industry that will establish a business here, either large or small, special terms, such as free sites, railway sidings to factories, etc., and the lowest charge for electric energy per horse power in America. We own and control this Power, and in order to attract manufacturers here, we are willing to give them all the Power they require on terms that will be satisfactory to them.

¶ Direct communication with Railway and Trent Valley Canal.

¶ Fixed assessment and cheap labor are further inducements to locate here.



## The Seymour Power House.

¶ The Seymour Power Company have erected a fine Power Plant, one-half mile from the Town, at a cost of \$250,000. They are also erecting another at Healey Falls that will cost half a million dollars. The Northumberland Paper and Electric Company are also erecting one just outside the town limits.

¶ The Town or Municipal Plant is furnishing the citizens with first-class electric light at the following rates :

For each 8-candle power lamp, \$1 per year.

For each 16-candle power lamp, \$2 per year.

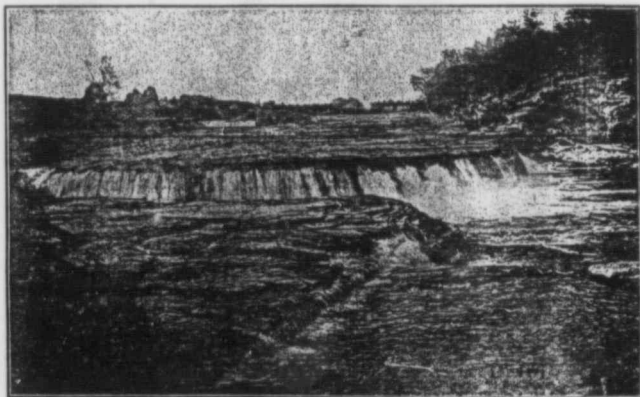
¶ Special rates will be given manufacturers for both light and water.

¶ The Fire Protection is first-class, under a good system of water supply from the centre of the Town.



## The Great Trent Valley Canal

is now rapidly nearing completion. The principal part of the unfinished work is in and about the Town of Campbellford and passes directly through the Town. It will be one of the great highways of Canada, giving direct communications through the Upper Lakes from the Northwest to the Atlantic Ocean, furnishing a great part of the transportation of the 400,000,000 bushels of grain that will be produced there inside of eight years.



RANNEY FALLS.

¶ There are at present about 1,500 men engaged at Campbellford on Public Works. More will soon be added.

¶ Property values have increased rapidly during the past year.

¶ The people of Campbellford are unanimous in their desire to make this a Great Manufacturing Town and to make use of the great natural resources possessed by them.

## Public Buildings and Churches.

¶ The Churches are all fine edifices with large congregations.



No. 1, Roman Catholic. No. 2, Baptist. No. 3, Methodist.  
No. 4, Presbyterian. No. 5, Anglican.

¶ The Town has two Banks:—The Bank of British North America and The Standard Bank of Canada.

¶ The Carnegie Free Public Library, erected this year, is a handsome structure and an ornament to the Town.

¶ The Government are about constructing a Post Office and Customs Building which will cost \$30,000 when completed.

## Our Superior High and Public Schools.



CAMPBELLFORD HIGH SCHOOL.



CAMPBELLFORD PUBLIC SCHOOL.

The Town High and Public Schools are second to none in the Province. They were erected on a commanding eminence and are situated in the centre of Town. A staff of 15 skilled and competent teachers preside with an attendance of 700 pupils.



## Agriculture, Dairy, Etc.

¶ Campbellford is situated in the centre of, and surrounded by, one of the finest agricultural districts in Canada. Our farmers are prosperous and of late years have given their attention to mixed farming, such as the raising of cattle, hogs and horses, and the making of butter and cheese. The latter is on a very large scale. There are within a radius of eight or ten miles 25 large cheese factories, owned and controlled by farmers. Their products, sold every week during the season in Campbellford, bring the highest prices.

¶ This County ranks with the first for fruit growing and is famous for its Northern Spy Apples. Nearly every farmer possesses a good orchard.

¶ All kinds of grain, large and small fruit and vegetables, are grown here in abundance.



## Ideal Place for Tourists and Sportsmen.



IDEAL CAMPING GROUNDS.



A SINGLE CATCH.

¶ The River Trent is an Ideal Sporting Ground. Its Bays and wide stretches of River in the immediate vicinity of Campbellford teem with Game Fish, Wild Duck, etc.

¶ Beautiful wooded points and Islands are to be found all along the River, which make beautiful Camping Grounds.

¶ The Game Fish caught in season are Maskinonge, Black and Yellow Bass, Sturgeon, Pickerel and many other varieties of fine fish. All of these can be caught near Campbellford, many of them within the Town limits.

¶ A number of Maskinonge ranging from 8 to 15 and 33 pounds were caught last season within three and five miles of the Town.

¶ Motor Boats, Row Boats, Canoes, Tents, and all kinds of Fishermen's Supplies as well as Competent Guides, can be procured here on short notice.

¶ The Maskinonge and Black Bass season opens on June 16th and continues all Summer and Fall.