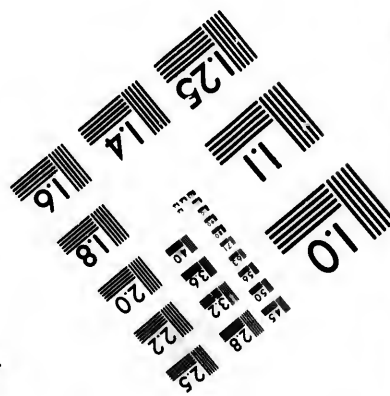
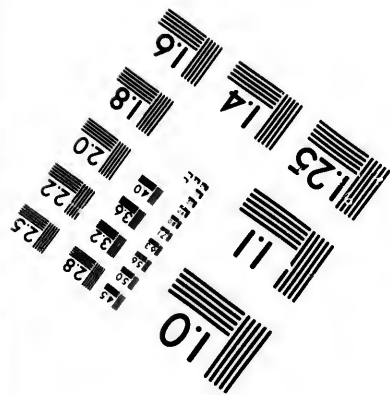
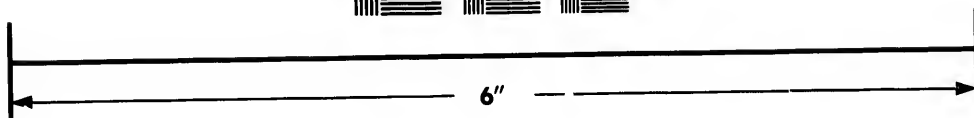
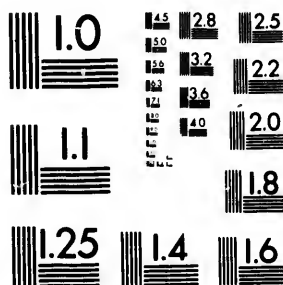


**IMAGE EVALUATION  
TEST TARGET (MT-3)**



**Photographic  
Sciences  
Corporation**

23 WEST MAIN STREET  
WEBSTER, N.Y. 14580  
(716) 872-4503

28  
22  
25  
22  
20

**CIHM/ICMH  
Microfiche  
Series.**

**CIHM/ICMH  
Collection de  
microfiches.**



**Canadian Institute for Historical Microreproductions / Institut canadien de microreproductions historiques**

10

**© 1983**

Technical and Bibliographic Notes/Notes techniques et bibliographiques

The Institute has attempted to obtain the best original copy available for filming. Features of this copy which may be bibliographically unique, which may alter any of the images in the reproduction, or which may significantly change the usual method of filming, are checked below.

L'Institut a microfilmé le meilleur exemplaire qu'il lui a été possible de se procurer. Les détails de cet exemplaire qui sont peut-être uniques du point de vue bibliographique, qui peuvent modifier une image reproduite, ou qui peuvent exiger une modification dans la méthode normale de filmage sont indiqués ci-dessous.

- |  |  |
|--|--|
| <input checked="" type="checkbox"/> Coloured covers/<br>Couverture de couleur  | <input type="checkbox"/> Coloured pages/<br>Pages de couleur   |
| <input checked="" type="checkbox"/> Covers damaged/<br>Couverture endommagée   | <input type="checkbox"/> Pages damaged/<br>Pages endommagées   |
| <input checked="" type="checkbox"/> Covers restored and/or laminated/<br>Couverture restaurée et/ou pelliculée   | <input type="checkbox"/> Pages restored and/or laminated/<br>Pages restaurées et/ou pelliculées  |
| <input type="checkbox"/> Cover title missing/<br>Le titre de couverture manque   | <input type="checkbox"/> Pages discoloured, stained or foxed/<br>Pages décolorées, tachetées ou piquées  |
| <input type="checkbox"/> Coloured maps/<br>Cartes géographiques en couleur   | <input type="checkbox"/> Pages detached/<br>Pages détachées  |
| <input type="checkbox"/> Coloured ink (i.e. other than blue or black)/<br>Encre de couleur (i.e. autre que bleue ou noire)   | <input type="checkbox"/> Showthrough/<br>Transparence  |
| <input type="checkbox"/> Coloured plates and/or illustrations/<br>Planches et/ou illustrations en couleur  | <input type="checkbox"/> Quality of print varies/<br>Qualité inégale de l'impression   |
| <input type="checkbox"/> Bound with other material/<br>Relié avec d'autres documents   | <input type="checkbox"/> Includes supplementary material/<br>Comprend du matériel supplémentaire   |
| <input type="checkbox"/> Tight binding may cause shadows or distortion<br>along interior margin/<br>La reliure serrée peut causer de l'ombre ou de la<br>distortion le long de la marge intérieure   | <input type="checkbox"/> Only edition available/<br>Seule édition disponible   |
| <input type="checkbox"/> Blank leaves added during restoration may<br>appear within the text. Whenever possible, these<br>have been omitted from filming/<br>Il se peut que certaines pages blanches ajoutées<br>lors d'une restauration apparaissent dans le texte,<br>mais, lorsque cela était possible, ces pages n'ont<br>pas été filmées. | <input type="checkbox"/> Pages wholly or partially obscured by errata<br>slips, tissues, etc., have been refilmed to<br>ensure the best possible image/<br>Les pages totalement ou partiellement<br>obscurcies par un feuillet d'errata, une pelure,<br>etc., ont été filmées à nouveau de façon à<br>obtenir la meilleure image possible. |
| <input type="checkbox"/> Additional comments:/<br>Commentaires supplémentaires:  |  |

This item is filmed at the reduction ratio checked below/  
Ce document est filmé au taux de réduction indiqué ci-dessous.

10X	14X	18X	22X	26X	30X
<input type="checkbox"/>	<input type="checkbox"/>	<input type="checkbox"/>	<input type="checkbox"/>	<input checked="" type="checkbox"/>	<input type="checkbox"/>
	12X	16X	20X	24X	28X
					32X

The copy filmed here has been reproduced thanks to the generosity of:

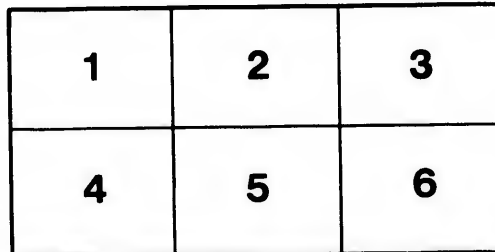
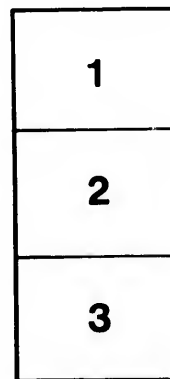
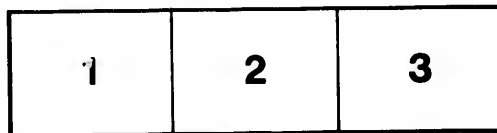
Library of Congress  
Photoduplication Service

The images appearing here are the best quality possible considering the condition and legibility of the original copy and in keeping with the filming contract specifications.

Original copies in printed paper covers are filmed beginning with the front cover and ending on the last page with a printed or illustrated impression, or the back cover when appropriate. All other original copies are filmed beginning on the first page with a printed or illustrated impression, and ending on the last page with a printed or illustrated impression.

The last recorded frame on each microfiche shall contain the symbol  $\rightarrow$  (meaning "CONTINUED"), or the symbol  $\nabla$  (meaning "END"), whichever applies.

Maps, plates, charts, etc., may be filmed at different reduction ratios. Those too large to be entirely included in one exposure are filmed beginning in the upper left hand corner, left to right and top to bottom, as many frames as required. The following diagrams illustrate the method:



L'exemplaire filmé fut reproduit grâce à la générosité de:

Library of Congress  
Photoduplication Service

Les images suivantes ont été reproduites avec le plus grand soin, compte tenu de la condition et de la netteté de l'exemplaire filmé, et en conformité avec les conditions du contrat de filmage.

Les exemplaires originaux dont la couverture en papier est imprimée sont filmés en commençant par le premier plat et en terminant soit par la dernière page qui comporte une empreinte d'impression ou d'illustration, soit par le second plat, selon le cas. Tous les autres exemplaires originaux sont filmés en commençant par la première page qui comporte une empreinte d'impression ou d'illustration et en terminant par la dernière page qui comporte une telle empreinte.

Un des symboles suivants apparaîtra sur la dernière image de chaque microfiche, selon le cas: le symbole  $\rightarrow$  signifie "A SUIVRE", le symbole  $\nabla$  signifie "FIN".

Les cartes, planches, tableaux, etc., peuvent être filmés à des taux de réduction différents. Lorsque le document est trop grand pour être reproduit en un seul cliché, il est filmé à partir de l'angle supérieur gauche, de gauche à droite, et de haut en bas, en prenant le nombre d'images nécessaire. Les diagrammes suivants illustrent la méthode.

errata  
to

pelure,  
on à



32X

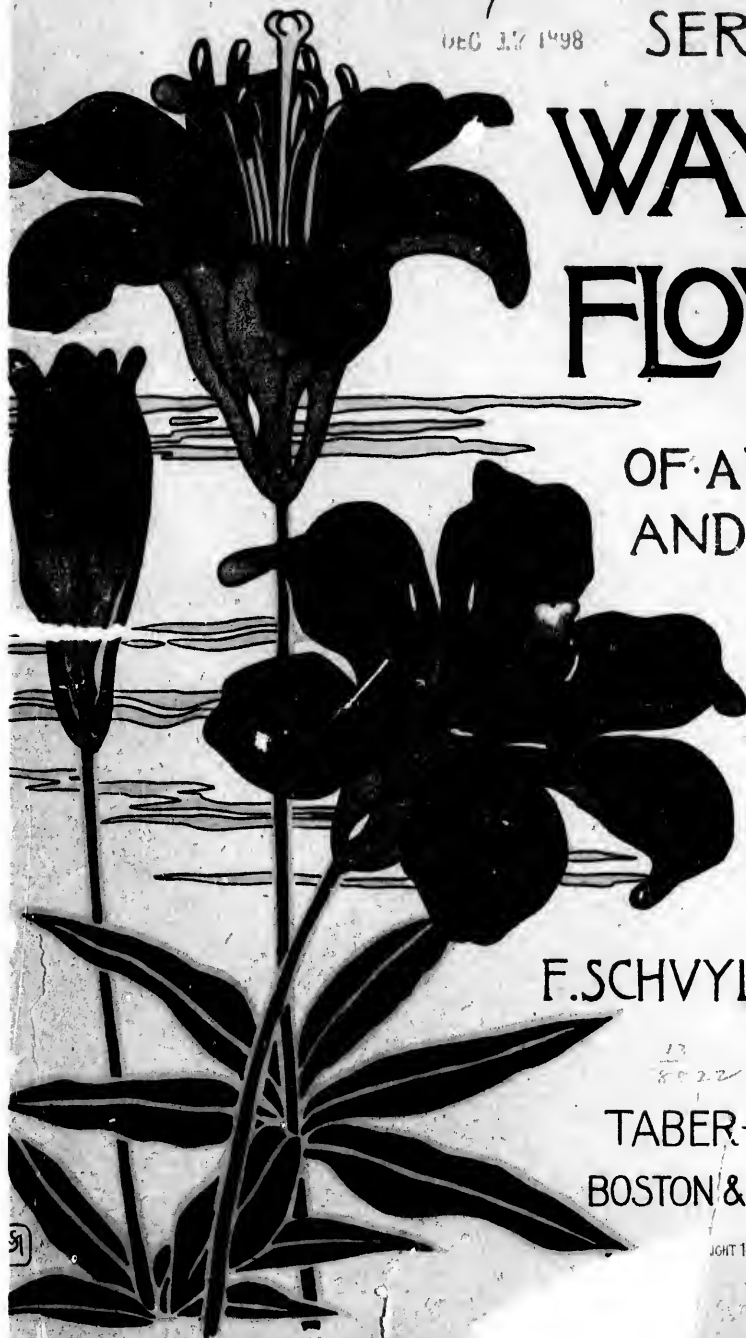


G.K. 112  
1742

G.K.

DEC 17 1998

SERIES · I ·



# WAYSIDE FLOWERS

1742  
402

OF · APRIL · MAY ·  
AND · EARLY · JUNE

WITH LIFE  
SIZE PEN AND  
INK STUDIES  
FROM NATURE

BY

F. SCHVYLER MATHEWS

17  
8022

TABER-PRANG ART CO  
BOSTON & SPRINGFIELD, MASS.

RIGHT 1998 BY TABER-PRANG ART CO. BOSTON, U.S.A.

91

SECOND COPY,  
1899.



*Chapin*



WAYSIDE

FLOWERS

SERIES I. BEING A DESCRIPTION OF AMERICAN  
WILD FLOWERS THAT BLOOM IN  
APRIL, MAY, AND EARLY JUNE ❀ ❀

<sup>author's</sup>  
BY F. SCHUYLER MATHEWS ❀ ❀ ❀  
ILLUSTRATED WITH PEN AND INK  
DRAWINGS FROM NATURE BY THE  
AUTHOR ❀ ❀ ❀ ❀ ❀ ❀ ❀ ❀ ❀ ❀

TABER-PRANG ART CO  
-BOSTON & SPRINGFIELD, MASS.



38764

COPYRIGHT 1899 BY TABER PRANG ART CO. BOSTON, U.S.A.

QK112  
M72

45673  
July 13.99.

# WAYSIDE FLOWERS.

## PREFACE, SERIES I.



THE division of a popular work on wild flowers into four sections, which are designated by special seasons, is a practical and simple method of sorting out the flowers according to the way of Nature, without troubling one with the complex system of the botanist. It is a useful sort of classification, because, to one who chafes at the delay necessarily attending the search for a flower's family name among the records in a manual of botany, the advantage of having a picture of the flower directly connected with the time of its appearance, it must be acknowledged, is immeasurably great.

For those, however, who prefer to find a flower properly placed among its family relations, I have provided a classified index, which includes some very important definitions and a nomenclature according to Dr. Asa Gray. Each of the four series is a complete book in itself, that is, as far as it goes; and with "Gray's Manual" in hand it will be found that the series cover a well-trodden path through the garden of Nature, which will materially aid one in pursuing investigations beyond the limitations of the wayside.

Although I have drawn many of the commoner flowers, I have not neglected those interesting ones which are less common; here and there I have introduced an unfamiliar character with the hope of stim-

ulating an interest in a search for those rarer flowers which frequently nestle beside characters thoroughly well known.

It is not possible for anyone to make a choice of one hundred familiar wild flowers, which might correspond with our preconceived ideas of what is most representative. What is common to one person is uncommon to another; and with about four hundred flowers to choose from, it is not likely that the selections of any two persons would bear a close resemblance. My choice, therefore, has been largely directed toward the proper recognition of the most interesting flower families, and the members of these families have posed for their pictures in the most natural attitudes.

Each flower or leaf is drawn *just as it grew*, without the slightest deference to a standard type, or a general average, or anything else of the kind. A thoroughbred Yankee is not lacking in distinctive qualities; it is not necessary that he should look like "Uncle Sam." An Iris is an Iris, yet there are no two exactly alike; we do not want to be forever furnished with representative Irises; we want a chance to see the differences.

A careful study of the wild flowers brings one to a realization of the fact that Nature's handiwork is infinite; she is not content with senseless duplications.

F. SCHUYLER MATHEWS.

Series 1.



Liverwort, Hepatica.  
*Hepatica triloba.*

Mayflower, Trailing Arbutus



Mayflower, Trailing Arbutus

**Liverwort, Hepatica.**

*Hepatica triloba.*

Family . . . RANUNCULACEÆ, Crowfoot.  
Color . . . Lilac-white, or pale purple.  
Blooms . . . April, early May.  
Environment. Woods, and woody pasture-land.  
Height . . . 3 ins. to 4 ins.  
Habitat . . . Common. Me. to Minn. and Mo., and northward.

Character: Leaves thin, hairy, leathery, almost evergreen, appearing later than the flowers; one of the earliest spring flowers.

**Mayflower, Trailing Arbutus.**

*Epigaea repens.*

Family . . . ERICACEÆ. Heath.  
Color . . . White, waxy, pink-tinged, lighter or deeper.  
Blooms . . . April-May.  
Environment. Woodland openings, rocky soil, hill-sides.  
Height . . . 3 ins. to 4 ins.  
Habitat . . . Me. to Minn., south to Fla. and Ky.

Character: Very fragrant. Thick-leaved, rusty stemmed, trailing over the ground; flowers immediately succeeding snow.

Series 1.



Marsh Marigold (wrongly called Cowslip).  
*Caltha palustris.*

Dutchman's Breeches.  
*Dicentra Cucullaria.*



**Marsh Marigold** (wrongly called Cowslip).

*Caltha palustris.*

- Family . . . RANUNCULACEÆ, Crowfoot.  
Color . . . Golden, shining yellow.  
Blooms . . . April-May.  
Environment, In wet meadows, beside brooks, on  
marshy ground.  
Height . . . 8 ins. to 1 ft., rarely 2 ft.  
Habitat . . . Common northward.

Character: A thick-leaved stocky plant, with a  
buttercuplike flower.

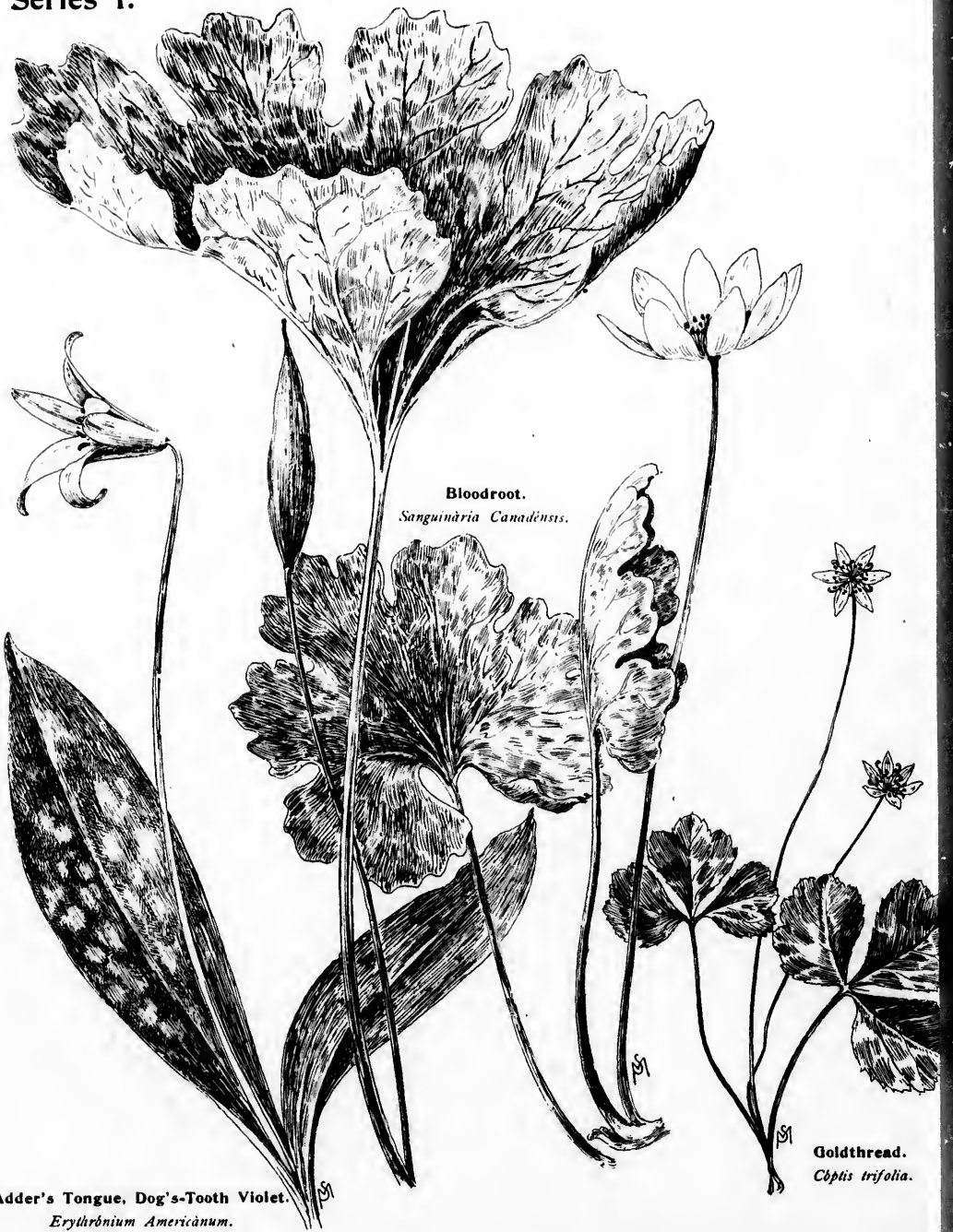
**Dutchman's Breeches.**

*Dicentra Cucullaria.*

- Family . . . FUMARIACEÆ. Fumitory.  
Color . . . White, cream-yellow tipped.  
Blooms . . . April-May.  
Environment, Rich woods, shaded rocky slopes.  
Height . . . 7 ins. to 10 ins.  
Habitat . . . New York westward, common.

Character: Delicate, slender, ornamental leaved;  
flower with two spurs.

Series 1.



Bloodroot.  
*Sanguinaria Canadensis.*

Adder's Tongue. Dog's-Tooth Violet.  
*Erythronium Americanum.*

Goldthread.  
*Coptis trifolia.*

**Adder's Tongue, Dog's-Tooth Violet.**

*Erythronium Americanum.*

Family . . . LILIACEÆ. Lily.  
Color . . . Light and deeper dull yellow.  
Blooms . . . April-May.  
Environment, Rich ground, borders of moist wood-  
lands.  
Height . . . 5 ins. to 7 ins.  
Habitat . . . Me. to Fla., west to Minn. and Ark.

Character: Leaves often mottled with purple,  
or green-white.

**Bloodroot.**

*Sanguinaria Canadensis.*

Family . . . PAPAVERACEÆ. Poppy.  
Color . . . White, yellow anthers.  
Blooms . . . April-May.  
Environment, Open, rich woods, borders of meadows,  
roadsides.  
Height . . . 8 ins. to 10 ins.  
Habitat . . . Common.

Character: Stems with acrid, orange juice.  
Flower opens before the leaves reach maturity;  
the latter early curl over the buds which later  
outgrow the leaves.

**Goldthread.**

*Coptis trifolia.*

Family . . . RANUNCULACEÆ, Crowfoot.  
Color . . . White.  
Blooms . . . May.  
Environment, Bogs, and moist woodlands.  
Height . . . 3 ins. to 5 ins.  
Habitat . . . Common northward, south along the  
mts. to Md., west to Iowa.

Character: Bright, shiny, evergreen, dark-green  
leaf; rootlets bright yellow.



Goldthread.  
*Coptis trifolia.*



Series 1.



False Solomon's Seal.  
*Smilacena stellata.*



Star Flower.  
*Trientalis Americana.*



**False Solomon's Seal.**

*Smilacena stellata.*

Family . . . LILIACEÆ, Lily.  
Color . . . White.  
Blooms . . . May, early June.  
Environment, Moist banks, edges of copses, borders  
of damp woods.  
Height . . . 8 ins. to 1 ft.  
Habitat . . . Me. to N. J., west to East Kan. and  
Minn., and westward.

Character: Pale, smooth, bluish green leaves;  
berries blackish.

**Star Flower.**

*Trientalis Americana.*

Family . . . PRIMULACEÆ, Primrose.  
Color . . . White.  
Blooms . . . May.  
Environment, Damp, cold woods.  
Height . . . 3 ins. to 5 ins.  
Habitat . . . Me. to Minn., south to northern Ind.,  
and mts. of Va.

Character: Leaf light green, thin; flower star-  
pointed.

Series 1.



Painted Trillium.  
*Trillium erythrocarpum.*

Wake-Robin, Birthroot.  
*Trillium erectum.*



**Painted Trillium.**

*Trillium erythrocarpum.*

Family . . . LILIACEÆ, Lily.  
Color . . . White, petal angularly marked with  
crimson.  
Blooms . . . April-May.  
Environment, Cold damp woods, and bogs.  
Height . . . 9 ins. to 1 ft.  
Habitat . . . Me. to Ga., west to Wisc. and Mo.

Character: Leaves taper-pointed; flower and  
leaves wavy.

**Wake-Robin, Birthroot.**

*Trillium erectum.*

Family . . . LILIACEÆ, Lily.  
Color . . . Dull brownish red, often pinkish or  
whitish.  
Blooms . . . April-May.  
Environment, Rich woods.  
Height . . . 7 ins. to 10 ins.  
Habitat . . . Me. to N. C., west to Minn. and Mo.

Character: Flowers variable in color, ill-scented;  
leaves broadly round, pointed.

Series 1.

Rue Anemone.  
*Anemonella thalictroides.*



Wood Anemone, Wind-flower.  
*Anemone quinquefolia.* Dr. Robinson.  
*Anemone nemorosa.*



Twin Flower.  
*Linnaea borealis.*



**Rue Anemone.**

*Anemonella thalictroides.*

Family . . . RANUNCULACEÆ, Crowfoot.  
 Color . . . White, rarely pink-tinged.  
 Blooms . . . April-May.  
 Environment, Woodlands.  
 Height . . . 3 ins. to 5 ins.  
 Habitat . . . Common northward.

Character: 5 to 10 white sepals, several flowers,  
 blooms in company with *A. nemorosa*.

**Wood Anemone, Wind-flower.**

*Anemone quinquefolia.* Dr. Robinson.  
*Anemone nemorosa.*

Family . . . RANUNCULACEÆ, Crowfoot.  
 Color . . . White, rarely outer surface of sepals  
 purplish.  
 Blooms . . . April-May.  
 Environment, Woodlands, margins of woods.  
 Height . . . 4 ins. to 10 ins.  
 Habitat . . . Common northward.

Character: 4 to 7 white sepals, bearing a single  
 short-stemmed flower; plant-stem perfectly  
 simple.

**Twin Flower.**

*Linnæa borealis.*

Family . . . CAPRIFOLIACEÆ, Honeysuckle.  
 Color . . . Pink of a crimson tone delicately  
 graded to white.  
 Blooms . . . Late May-early June.  
 Environment, Moist, mossy woodlands.  
 Height . . . 3 ins. to 4 ins.  
 Habitat . . . Me. to N. J. and mts. of Md., west  
 to Minn., and extreme north.

Character: Delicately fragrant nodding flower;  
 a vine.



Series 1.



Bellwort.  
*Oxalis sessilifolia.*

Yellow Wood-Sorrel.  
*Oxalis corniculata* var. *stricta.*



rel.  
*stricta*.

**Bellwort.**

*Oakesia sessilifolia.*

- Family . . . LILIACEÆ, Lily.  
Color . . . Yellowish, or cream color, sometimes slightly greenish.  
Blooms . . . April-May.  
Environment, Low woods, margins of woodlands.  
Height . . . 8 ins. to 1 ft.  
Habitat . . . Me. to Fla., west to Minn., Neb. and Ark.

Character: Inconspicuous flower hanging beneath the leaves.

**Yellow Wood-Sorrel.**

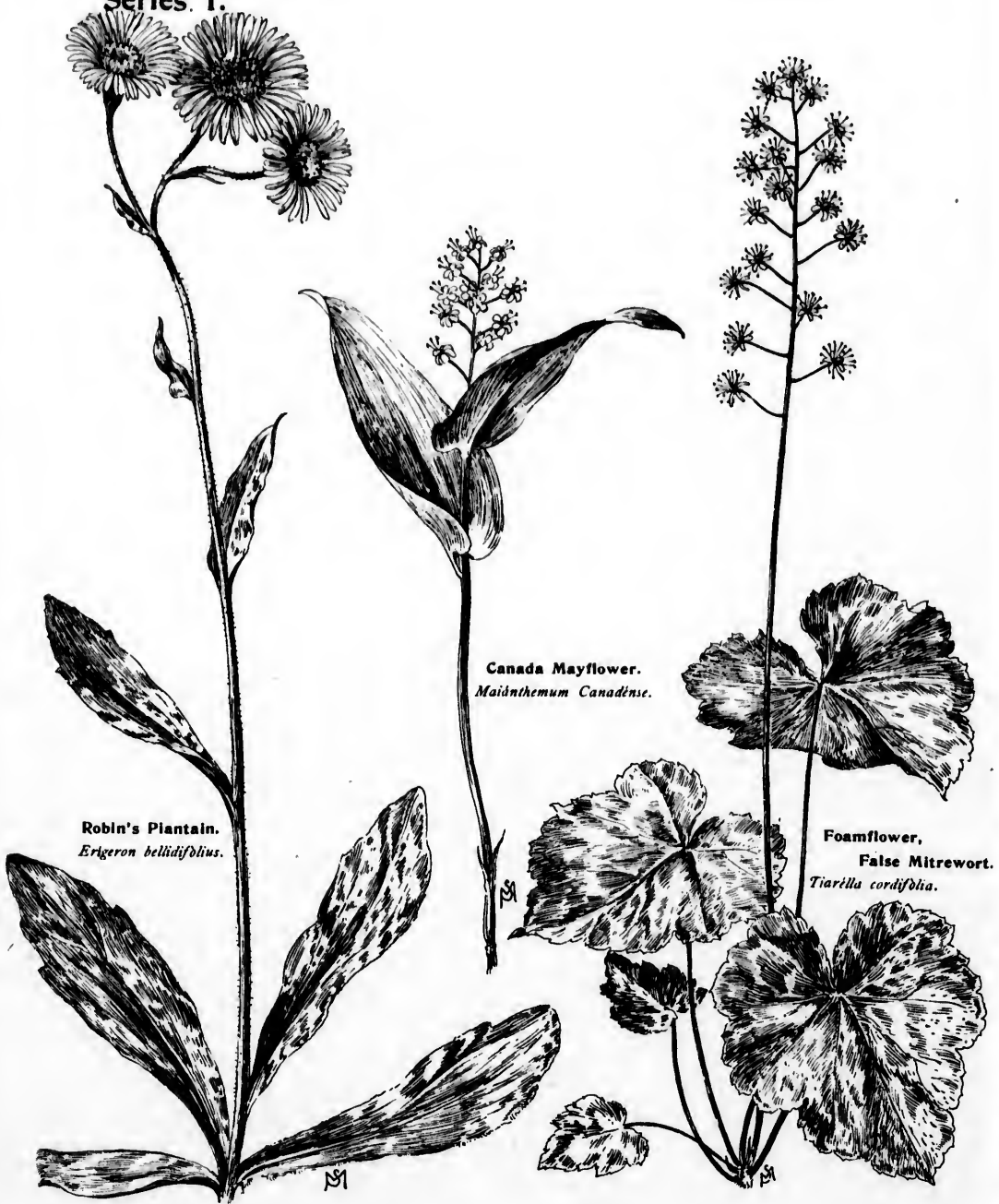
*Oxalis corniculata* var. *stricta*.

- Family . . . GERANIACEÆ, Geranium.  
Color . . . Yellow, of a golden tone; not bright, but light.  
Blooms . . . May, continues sparingly until September.  
Environment, Roadsides, borders of fields, and woodlands.  
Height . . . 3 ins. to 5 ins.  
Habitat . . . Common.

Character: Variable, low, drooping trifoliate leaves.



Series 1.



Robin's Plantain.  
*Erigeron bellidifolius.*

Canada Mayflower.  
*Maidenium Canadense.*

Foamflower,  
False Mitrewort.  
*Tiarilla cordifolia.*

F  
C  
B  
E  
H  
H

**Canada Mayflower.**

*Maidenium Canadense.*

Family . . . LILIACEÆ, Lily.  
Color . . . White.  
Blooms . . . May and early June.  
Environment, Moist woods.  
Height . . . 3 ins. to 5 ins.  
Habitat . . . Me. to N. C., west to Minn. and  
Iowa.

Character: Fine flowers; inconspicuous, shiny  
leafage.

**Robin's Plantain.**

*Erigeron bellidifolius.*

Family . . . COMPOSITÆ, Composite.  
Color . . . Lighter or deeper pale violet, yellow  
center.  
Blooms . . . May, early June.  
Environment, Copses, moist banks, roadsides, bor-  
ders of fields.  
Height . . . 10 ins. to 18 ins.  
Habitat . . . Common.

Character: Asterlike, stout-stemmed.

**Foamflower, False Mitrewort.**

*Tiarella cordifolia.*

Family . . . SAXIFRAGACEÆ, Saxifrage.  
Color . . . White.  
Blooms . . . April-May, sometimes early June.  
Environment, Rich woods, and moist, shady dells.  
Height . . . 6 ins. to 8 ins.  
Habitat . . . Me. to Minn. and Ind., and south  
through the mts.

Character: A hairy surfaced, maplelike, mottled  
green leaf.



flower,  
False Mitrewort.  
*a cordifolia.*



Series 1.



Solomon's Seal.  
*Polygonatum biflorum.*

Fringed Polygala, Flowering Wintergreen.  
*Polygala paucifolia.*



### Solomon's Seal.

*Polygonatum biflorum.*

Family . . . LILIACEÆ, Lily.  
Color . . . Greenish-white.  
Blooms . . . May, early June.  
Environment, Wooded hillsides, shady roadsides.  
Height . . . 10 ins. to 18 ins., rarely 3 ft.  
Habitat . . . Me. to Fla., west to Minn., Eastern  
Kan. and Tex.

Character: Root pitted like a seal print, hence the name: Solomon's Seal. Mostly two flowers at base of each leaflet; berries in autumn, first green, then blue-black like grapes.

### Fringed Polygala, Flowering Wintergreen.

*Polygala paucifolia.*

Family . . . POLYGALACEÆ, Milkwort.  
Color . . . Magenta, rarely white, often a crimson-pink, near magenta.  
Blooms . . . May, early June.  
Environment, Woods, woody roadsides.  
Height . . . 3 ins. to 4 ins.  
Habitat . . . Me. to Minn. and Ill., and southward along Alleghany Mts.

Character: Trailing, vinelike; the subterranean shoots bear concealed fertile flowers.

Series 1.



Jack-in-the-Pulpit, Indian Turnip.  
*Arisæma triphyllum.*

Wood Sorrel.  
*Oxalis Acetosella.*



Wood Sorrel.  
*Oxalis Acetosella.*

**Jack-in-the-Pulpit, Indian Turnip.**

*Arisæma triphyllum.*

- Family . . . ARACEÆ, Arum.  
Color . . . Pale green, heavily striped with shiny  
madder brown.  
Blooms . . . April, early June.  
Environment, Rich woods, beside brooks.  
Height . . . 1 ft. to 18 ins.  
Habitat . . . Me. to Fla., west to Minn. and  
Eastern Kan.

Character: Leaves taller than flower, hiding it;  
fruit at first green, finally scarlet.

**Wood Sorrel.**

*Oxalis Acetosella.*

- Family . . . GERANIACEÆ, Geranium.  
Color . . . White, crimson-pink veins.  
Blooms . . . Late May, early June, sometimes  
early July.  
Environment, Deep, cold woods.  
Height . . . 2 ins. to 5 ins.  
Habitat . . . Me. to Penn., Lake Superior and  
northward; southward in the Alle-  
ghany Mts.

Series 1.



Blue Flag, Larger.  
*Iris versicolor.*

**Blue Flag, Larger.**

*Iris versicolor.*

- Family . . IRIDACEÆ, Iris.  
Color . . . Lighter or deeper violet, striped purple,  
white and yellow.  
Blooms . . May, early June, sometimes through-  
out June.  
Environment, Beside streams, ponds, and in swamps.  
Height . . . 1 ft. to 2 ft.  
Habitat . . Me. to Fla., west to Minn. and Ark.  
Character: Stem angled on one side; leaves  
sword-shaped.



Series 1.



Wild Parsnip.  
*Thalictrum flavum.*

Wild Geranium, Cranesbill.  
*Geranium maculatum.*



Geranium. Cranesbill.  
*Geranium maculatum.*

#### Wild Parsnip.

*Zizia aurea.*

- Family . . . UMBELLIFERÆ, Parsley.  
Color . . . A not very bright golden yellow.  
Blooms . . . May-June.  
Environment, Roadsides, meadows, and meadow  
copses.  
Height . . . 18 ins. to 2 ft., rarely 3 ft.  
Habitat . . . Atlantic states, west to Minn., and  
Tex.

Character: Smooth, lined stem; aromatic odor  
when bruised.

#### Wild Geranium, Cranesbill.

*Geranium maculatum.*

- Family . . . GERANIACEÆ, Geranium.  
Color . . . Pale magenta-purple.  
Blooms . . . May-June, sometimes early July.  
Environment, Open woods, roadsides, fields.  
Height . . . 1 ft. to 2 ft.  
Habitat . . . Common.

Character: Stem erect and hairy.

## SYSTEMATICAL INDEX.

- RANUNCULACEÆ, Crowfoot.**  
 Herbs with numerous stamens, and usually more than one pistil, all the parts of the flower distinct, and inserted on the receptacle. Calyx often colored like a corolla, when the latter is wanting.  
 Thimble-weed, *Anemone Virginiana* . . . . . 11-21  
 Wood Anemone, Wind-flower. *Anemone quinquefolia*. *Anemone nemorosa* . . . . . 1-13  
 Liverwort, Hepatica, *Hepatica triloba* . . . . . 1-3  
 Rue Anemone, *Anemonella thalictroides* . . . . . 1-13  
 Marsh Marigold, *Callis palustris* 1-5  
 Goldthread, *Coptis trifolia* . . . . . 1-7  
 Columbine, *Aquilegia Canadensis* 11-5
- PAPAVERACEÆ, Poppy.**  
 Herbs with regular flowers, calyx mostly of two sepals which fall when the blossom opens, petals twice or 3-5 times as many, numerous free stamens. Juice usually milky or colored and narcotic.  
 Bloodroot, *Sanguinaria Canadensis* . . . . . 1-7
- FUMARIACEÆ, Fumitory.**  
 Delicate and smooth herbs. Sepals 2, scale-like; 4 larger irregular and closed petals, the two outer with spreading tips, and 1 or both spurred or saccate at base, the 2 inner and smaller united by their tips, which inclose the anthers of the 6 stamens in 2 sets along with the stigma. Compound leaves.  
 Dutchman's Breeches, *Dicentra Cucullaria* . . . . . 1-5
- CARYOPHYLLACEÆ, Pink.**  
 Herbs with regular flowers with not over 10 stamens, 2-5 styles or sessile stigmas, mostly separate to the base. Calyx persistent. Petals sometimes minute or wanting. Opposite entire leaves.  
 Long-leaved Stitchwort, *Stellaria longifolia* . . . . . 11-5
- HYPERICACEÆ, St. John's-wort.**  
 Perfect flowers with many or few stamens (usually in 3 or 5 clusters) inserted on the receptacle. Leaves opposite, entire, simple.  
 Upright-leaved St. John's-wort, *Hypericum adpressum* . . . . . 1V-7  
 Common St. John's-wort, *Hypericum perforatum* . . . . . 1V-7
- GERANIACEÆ, Geranium.**  
 Herbs with regular flowers on the plan of 5, stamens 10, herbage scented. Leaves simple, variously lobed or even dissected. (In *Oxalis* leaves compound, of 3 orbiculate leaflets, and flowers usually open only in sunshine.)  
 Wild Geranium, Cranesbill, *Geranium maculatum* . . . . . 1-25  
 Herb Robert, *Geranium Robertianum* . . . . . 1V-9
- Wood Sorrel, *Oxalis Acetosella* 1-21**  
 Yellow Wood-Sorrel, *Oxalis corniculata* var. *stricta* . . . . . 1-15  
 Jewelweed, Touch-me-not, *Impatiens pallida* . . . . . 111-19
- POLYGALACEÆ, Milkwort.**  
 Herbs with very irregular flowers. Calyx persistent of 5 sepals; 3 of them small, viz.: 2 on the lower, and 1 on the upper side of the blossom, and 1 on each side called wings, which are larger, colored and would be taken for petals. Within these on the lower side, are 3 petals united into 1 body, the middle one keel-shaped and often bearing a crest. Stamens 6 or 8 concealed in the hooded middle petal. Leaves simple, entire, alternate or whorled.  
 Fringed Polygala, Flowering Wintergreen, *Polygala paucifolia* . . . . . 1-19  
 Milkwort, *Polygala polygama* . . . . . 111-11  
 Milkwort, *Polygala cruciata* . . . . . 1V-5
- LEGUMINOSÆ, Pulse.**  
 Flowers (always on the plan of 5, and stamens not exceeding 10) truly papilionaceous, i.e. butterflylike or having a standard, keel and wings. Sepals united more or less into a tube or cup. Leaves compound and alternate.  
 Wild Indigo, *Baptisia tinctoria* 1V-3
- ROSACEÆ, Rose.**  
 Plants with regular flowers, numerous (rarely few) distinct stamens inserted on the calyx, and 1 or many pistils, which are quite distinct. Calyx of 5 or rarely 3, 4 or 8 sepals, united at the base. Petals as many as the sepals, and inserted with the stamens on the edge of a disk that lines the calyx tube. Leaves alternate and stipulate.  
 Meadowsweet, *Spiraea salicifolia* 11-19  
 Hardhack, Steeple-bush, *Spiraea tomentosa* . . . . . 11-19  
 Purple Flowering-Raspberry, *Rubus odoratus* . . . . . 11-17  
 Wild Swamp Rose, *Rosa Carolina* . . . . . 111-7
- SAXIFRAGACEÆ, Saxifrage.**  
 Flowers mostly perfect with as many or twice as many stamens, and fewer styles or stigmas than there are petals or sepals. Stamens and petals generally borne on the calyx.  
 Foamflower, False Mitrewort, *Tiarella cordifolia* . . . . . 1-17
- DROSERACEÆ, Sundew.**  
 Bog herbs, with regular five-petaled flowers, and bristly fringed leaves in a tuft at the root. Insectivorous plants.  
 Long-leaved Sundew, *Drosera intermedia* var. *Americana* . . . . . 111-25
- MELASTOMACEÆ, Melastoma.**  
 Plants with opposite simple 3-7 ribbed leaves, no stipules, as many
- or twice as many stamens as petals, both inserted in the throat of the calyx, anthers of peculiar shape opening by a small hole at the apex  
 Meadow Beauty, Deergrass, *Rhexia Virginica* . . . . . 111-19
- ONAGRACEÆ, Evening Primrose.**  
 Herbs or shrubs with showy perfect and symmetrical flowers in fours (rarely in two to sixes) throughout. The calyx tube bearing the petals, and as many or twice as many stamens. Styles always united into one.  
 Fireweed, *Epilobium angustifolium* . . . . . 111-15  
 Hairy Willow-herb, *Epilobium hirsutum* . . . . . 111-15  
 Evening Primrose, *Oenothera biennis* . . . . . 1V-7
- UMBELLIFERÆ, Parsley.**  
 Herbs with small flowers in compound umbels calyx with 5 minute teeth or none, 5 petals, 5 stamens and 2 styles. Stems usually hollow. Leaves alternate, more commonly compound.  
 Wild Parsnip, *Zizia aurea* . . . . . 1-25
- CAPRIFOLIACEÆ, Honeysuckle.**  
 Shrubs, or rarely herbs; stamens as many as the lobes of the corolla and borne on its tube. Leaves opposite without stipules.  
 Twin Flower, *Linnaea borealis* 1-13
- RUBIACEÆ, Madder.**  
 Shrubs or rarely herbs, stamens as many as the lobes of the corolla and borne on its tube. Entire opposite leaves with stipules between them, or else (as in *Galium*) the leaves whorled without stipules.  
 Bluets, Quaker Ladies, *Houstonia carnea* . . . . . 11-3  
 Bedstraw, *Galium asprellum* . . . . . 111-11
- COMPOSITÆ, Composite.**  
 The largest family of flowering plants. Corollas either tubular (or funnel-formed and lobed) or strap-shaped, sometimes both kinds in the same head; when the marginal strap-shaped corollas form what are called ray flowers, those of the central part of the head are called disk flowers. There are almost always five stamens, and the anthers are united in a common tube through which the style passes.  
 White Snake-root, *Eupatorium agreratoides* . . . . . 111-21  
 Golden Aster, *Chrysopsis falcata* 111-7  
 Lance-leaved Golden-rod, *Solidago lanceolata* . . . . . 1V-19  
 Blue-stemmed Golden-rod, *Solidago casta* . . . . . 1V-21  
 White Golden-rod, *Solidago bicolor* . . . . . 1V-17  
 Smooth Golden-rod, *Solidago serotina* . . . . . 1V-13  
 Gray Golden-rod, *Solidago nemoralis* . . . . . 1V-15

SYSTEMATICAL INDEX.

Series. Pp.  
 Heart-leaved Aster, *Aster cordifolius* . . . IV-23  
 Purple-stemmed Aster, *Aster puniceus* . . . IV-17  
 Rough-leaved Aster, *Aster radula* . . . IV-23  
 Willow-leaved Blue Aster, *Aster Novae-Belgiae* . . . IV-13  
 White Heathlike Aster, *Aster arifolius* . . . IV-21  
 Panicked White Aster, *Aster paniculatus* . . . IV-15  
 Robin's Plantain, *Erigeron bellidifolius* . . . I-17  
 Dalry Fleabane, *Erigeron strigosus* . . . III-13  
 Black-eyed Susan, *Rudbeckia hirta* . . . III-19  
 Wild Sunflower, *Helianthus giganteus* . . . III-25  
 Beggar-ticks, *Bidens frondosa* . . . IV-11  
 Larger Bur-Marigold, *Bidens chrysanthemoides* . . . IV-11  
 Fall Dandelion, *Lactodon autumnalis* . . . IV-25

LOBELIACEAE, Lobelia.  
 Plants with milky, acrid juice, alternate, simple leaves, and scattered, racemed or panicle flowers. The corolla irregularly 5 lobed and mostly split down, on the upper side; the 5 stamens united into a tube commonly by their filaments and always by their anthers; style only one.  
 Cardinal Flower, *Lobelia cardinalis* . . . III-17  
 Indian Tobacco, *Lobelia inflata* . . . II-15

CAMPANULACEAE, Campanula.  
 Herbs with milky juice, and scattered flowers, with regular 5-lobed (blue or white) corolla, and 5 stamens borne on the summit of the calyx tube. Style 1; stigmas several. Stamens separate. Leaves alternate.  
 Harebell, Bluebell, *Campanula rotundifolia* . . . IV-5

ERICACEAE, Heath.  
 A large family of shrubs, herbs, and small trees. Flowers almost all regular with as many or twice as many stamens as there are petals or lobes of the corolla. The heath and heather belong to this family and are distinguished by needlelike evergreen leaves, and 4-lobed corollas.  
 Mayflower, Trailing Arbutus, *Epigaea repens* . . . I-3  
 Shio Leaf, *Pyrola elliptica* . . . II-7  
 Bell Heather, *Erica cinerea* . . . III-11  
 Indian Pipe, *Monotropa uniflora* . . . II-25

PLUMBAGINACEAE, Leadwort.  
 Known by the regular flowers with 5-lobed palated calyx, 5 stamens opposite as many petals and almost separate from them, and 5 styles.  
 Sea Lavender, Marsh Rosemary, *Statice Limonium var. Caroliniana* . . . III-23

PRIMUMACEAE, Primrose.  
 Herbs with regular perfect flowers, the stamens borne on the corolla and

Series. Pp.  
 as many as its divisions and opposite them; one style and stigma.  
 Star Flower, *Trientalis Americana* . . . I-9  
 Four-leaved Looseswife, *Lysimachia quadrifolia* . . . II-13  
 Common Looseswife, *Lysimachia stricta* . . . II-13

APOCYNACEAE, Dogbane.  
 Herbaceous or woody plants, with milky juice, opposite (sometimes whorled) simple and entire leaves, without stipules, and regular flowers. Calyx, corolla, and stamens in fives, but the stigmas and often the styles united into one.  
 Spreading Dogbane, *Apocynum androsaemifolium* . . . II-15

ASCLEPIADACEAE, Milkweed.  
 Plants with milky juice opposite (sometimes whorled) simple and entire leaves without stipules, and regular monopetalous flowers with five parts to the calyx, corolla and stamens. Anthers connected with the stigma. The short filaments bearing curious appendages behind the anthers forming what is called a crown.  
 Swamp Milkweed, *Asclepias incarnata* . . . III-13  
 Common Milkweed, *Asclepias Cornuti* . . . III-9

GENTIANACEAE, Gentian.  
 Herbs with regular flowers, having stamens as many as the lobes of the corolla and alternate with them. Leaves opposite, simple, entire and sessile.  
 Centaury, Erythraea, *Erythraea spicata* . . . III-20  
 Sea Pink, *Sabbatia stellaris* . . . III-5  
 Slender Sabbatia, *Sabbatia gracilis* . . . III-5  
 American Centaury, *Sabbatia chloroides* . . . III-5  
 Fringed Gentian, *Gentiana crinita* . . . IV-19  
 Closed Gentian, Bottle Gentian, *Gentiana Andreuxii* . . . IV-19

SCROPHULARIACEAE, Figwort.  
 Known by the 2-lipped or at least more or less irregular monopetalous corolla, 2 or 4 stamens, single style entire or 2-lobed stigma. A few have the corolla almost regular, and one or two have 5 stamens either complete or incomplete.  
 Turtlehead, *Chelone glabra* . . . III-19  
 Purple Gerardia, *Gerardia purpurea* . . . III-21

LABIATÆ, Mint.  
 Herbs with aromatic herbage, square stems, opposite simple leaves, 2-lipped corolla, the upper lip divided into 2 lobes, the lower into 3. 2 or 4 stamens inserted on the corolla tube, 2-lobed stigma. Flowers from the axils of the leaves or bracts, in clusters or spikes.  
 Self-Heal, *Brunella vulgaris* . . . III-11

ORCHIDACEAE, Orchis.  
 Perennial herbs more or less dependent upon insects for fertilization.

Series. Pp.  
 The six-parted perianth composed of three outer divisions answering to sepals, and the three inner (which alternate with the outer divisions) answering to petals; one of these which is larger and different from the others is called the lip or labellum. There are one or two stamens which are connected with the style; the pollen is mostly coherent in masses.  
 Calopogon, Bearded Orchis, *Calopogon pulchellus* . . . II-11  
 Snake's Mouth, *Pogonia ophioglossoides* . . . II-11  
 Ladies' Tresses, *Spiranthes cernua* . . . IV-21  
 Rattlesnake Plantain, *Goodyera pubescens* . . . III-3  
 Greenish-White Orchis, *Habenaria tridentata* . . . II-9  
 Smaller Green Orchis, *Habenaria Hookeri* . . . II-9  
 Ragged Fringed Orchis, *Habenaria lacera* . . . II-9  
 Smaller Purple-Fringed Orchis, *Habenaria psycodes* . . . II-11  
 Showy Lady's Slipper, *Cypripedium spectabile* . . . II-21  
 Moccasin-flower, Lady's Slipper, *Cypripedium acaule* . . . II-7

IRIDACEAE, Iris.  
 Flowers perfect and showy, from a spathe of two or more leaves or bracts; divisions of the perianth in two sets (answering to sepals and petals). Style 1, or rarely 3-cleft; stigmas 3 opposite the 3 stamens and the outer divisions of the perianth. Anthers face outward.  
 Blue Flag, Larger, *Iris versicolor* . . . I-23  
 Blue-eyed Grass, *Scyrrinchium angustifolium* . . . II-3

LILIACEAE, Lily.  
 Large family with regular symmetrical flowers, usually with perianth of 6 parts, and as many stamens standing in front of the divisions. Chiefly herbs with entire leaves.  
 Solomon's Seal, *Polygonatum biflorum* . . . I-19  
 False Solomon's Seal, *Smilacina stellata* . . . I-9  
 Canada Mayflower, *Maianthemum Canadense* . . . I-17  
 Bellwort, *Oakesia sessilifolia* . . . I-15  
 Adder's Tongue, Dog's-Tooth Violet, *Erythronium Americanum* . . . I-7  
 Wood Lily, Wild Red Lily, *Lilium Philadelphicum* . . . II-25  
 Canada Meadow Lily, *Lilium Canadense* . . . II-23  
 Wake-Robin, Birthroot, *Trillium erectum* . . . I-11  
 Painted Trillium, *Trillium erythrocarum* . . . I-11

ARACEAE, Arum.  
 Herbs with pungent watery juice, small perfect or imperfect flowers in a fleshy head or spike called a spadix, usually furnished with the colored enveloping bract called a spathe.  
 Jack-in-the-Pulpit, Indian Turnip, *Arisaema triphyllum* . . . I-21

## ALPHABETICAL INDEX

CF THE FOUR SERIES OF WAVSIDE FLOWERS.

	Series Pp.		Series Pp.		Series Pp.
Adder's Tongue . . . . .	I-7	Dandelion, Fall . . . . .	IV-25	Indigo, Wild . . . . .	IV-3
Anemone nemorosa . . . . .	I-13	Deergrass . . . . .	III-17	Iris versicolor . . . . .	I-23
Anemone quinquefolia . . . . .	I-13	Dicentra Cucullaria . . . . .	I-5	Jack-in-the-Pulpit . . . . .	I-21
Anemone Virginiana . . . . .	II-21	Dogbane, Spreading . . . . .	II-15	Jewelweed . . . . .	III-19
Anemone, Wood . . . . .	I-13	<i>Drosera intermedia</i> var.		Ladies' Tresses . . . . .	IV-21
<i>Anemone thalictroides</i> . . . . .	I-13	Americana . . . . .	III-25	Lady's Slipper . . . . .	II-7
<i>Apocynum androsaemifolium</i> . . . . .	II-15	Dutchman's Breeches . . . . .	I-5	Lady's Slipper, Showy . . . . .	II-21
<i>Aquilegia Canadensis</i> . . . . .	II-5	<i>Epigaea repens</i> . . . . .	I-3	<i>Leontodon autumnalis</i> . . . . .	IV-25
Arbutus, Trailing . . . . .	I-3	<i>Epilobium angustifolium</i> . . . . .	III-15	<i>Lilium Canadense</i> . . . . .	II-23
<i>Arizama triphyllum</i> . . . . .	I-21	<i>Epilobium hirsutum</i> . . . . .	III-15	<i>Lilium Philadelphicum</i> . . . . .	II-25
<i>Asclepias Cornuti</i> . . . . .	III-9	<i>Erica tinctoria</i> . . . . .	III-11	Lily, Canada Meadow . . . . .	II-23
<i>Asclepias incarnata</i> . . . . .	III-13	<i>Erigeron bellidifolius</i> . . . . .	I-17	Lily, Wild Red . . . . .	II-25
<i>Aster cordifolius</i> . . . . .	IV-23	<i>Erigeron strigosus</i> . . . . .	III-13	Lily, Wood . . . . .	II-25
<i>Aster ericoides</i> . . . . .	IV-21	<i>Erythraea spicata</i> . . . . .	III-23	<i>Linnaea borealis</i> . . . . .	I-13
<i>Aster Golden</i> . . . . .	III-7	<i>Erythronium Americanum</i> . . . . .	I-7	Liverwort . . . . .	I-3
<i>Aster, Heart-leaved</i> . . . . .	IV-23	<i>Eupatorium ageratoides</i> . . . . .	III-21	<i>Lobelia cardinalis</i> . . . . .	III-17
<i>Aster Novi-Belgii</i> . . . . .	IV-13	Evening Primrose . . . . .	IV-7	<i>Lobelia inflata</i> . . . . .	II-15
<i>Aster, Panicle White</i> . . . . .	IV-15	Fireweed . . . . .	III-15	Loosestrife, Common . . . . .	II-13
<i>Aster paniculatus</i> . . . . .	IV-15	Flowering Wintergreen . . . . .	I-19	Loosestrife, Four-leaved . . . . .	II-13
<i>Aster puniceus</i> . . . . .	IV-17	Foamflower . . . . .	I-17	<i>Lysimachia quadrifolia</i> . . . . .	II-13
<i>Aster, Purple-stemmed</i> . . . . .	IV-17	<i>Galium asprellum</i> . . . . .	III-11	<i>Lysimachia stricta</i> . . . . .	II-13
<i>Aster radula</i> . . . . .	IV-23	Gentian, Bottle . . . . .	IV-19	<i>Maianthemum Canadense</i> . . . . .	I-17
<i>Aster, Rough-leaved</i> . . . . .	IV-23	Gentian, Closed . . . . .	IV-19	Marsh Marigold . . . . .	I-5
<i>Aster, White Heatlike</i> . . . . .	IV-21	Gentian, Fringed . . . . .	IV-25	Marsh Rosemary . . . . .	III-23
<i>Aster, Willow-leaved Blue</i> . . . . .	IV-13	<i>Gentiana Andreinii</i> . . . . .	IV-19	Mayflower . . . . .	I-3
<i>Baptisia tinctoria</i> . . . . .	IV-3	<i>Gentiana trinita</i> . . . . .	IV-25	Meadow Beauty . . . . .	III-17
Bedstraw . . . . .	III-11	<i>Geranium maculatum</i> . . . . .	I-25	Meadowsweet . . . . .	II-19
Beggar-ticks . . . . .	IV-11	<i>Geranium Robertianum</i> . . . . .	IV-9	Milkweed, Common . . . . .	III-9
Bellwort . . . . .	I-15	Geranium, Wild . . . . .	I-25	Milkweed, Swamp . . . . .	III-13
<i>Bidens chrysanthemoides</i> . . . . .	IV-11	Gerardia, Purple . . . . .	III-21	Milkwort . . . . .	III-11, and IV-5
<i>Bidens frondosa</i> . . . . .	IV-11	<i>Gerardia purpurea</i> . . . . .	III-21	Mitrewort, False . . . . .	I-17
Birthroot . . . . .	I-11	Golden-rod, Blue-stemmed . . . . .	IV-21	Moccasin Flower . . . . .	II-7
Black-eyed Susan . . . . .	III-3	Golden-rod, Gray . . . . .	IV-15	<i>Monotropa uniflora</i> . . . . .	II-25
Bloodroot . . . . .	I-7	Golden-rod, Lance-leaved . . . . .	IV-19	<i>Oaketa strillifolia</i> . . . . .	I-15
Bluebell . . . . .	IV-5	Golden-rod, Smooth . . . . .	IV-13	<i>Oenothera biennis</i> . . . . .	IV-7
Blue-eyed Grass . . . . .	II-3	Golden-rod, White . . . . .	IV-17	Orchid, Bearded . . . . .	II-11
Blue Flag, Larger . . . . .	I-23	Goldthread . . . . .	I-7	Orchid, Greenish-White . . . . .	II-9
Bluets . . . . .	II-3	<i>Goodyera pubescens</i> . . . . .	III-3	Orchid, Ragged Fringed . . . . .	II-9
<i>Brunella vulgaris</i> . . . . .	III-11	<i>Habenaria Hookeri</i> . . . . .	II-9	Orchid, Smaller Green . . . . .	II-9
Bur-Marigold, Larger . . . . .	IV-11	<i>Habenaria lacera</i> . . . . .	II-9	Orchid, Smaller Purple-Fringed . . . . .	II-11
<i>Calopogon pulchellus</i> . . . . .	II-11	<i>Habenaria psycodes</i> . . . . .	II-11	<i>Oxalis acetosella</i> . . . . .	I-21
<i>Calla palustris</i> . . . . .	I-5	<i>Habenaria tridentata</i> . . . . .	II-9	<i>Oxalis corniculata</i> var. <i>stricta</i> . . . . .	I-15
<i>Campanula rotundifolia</i> . . . . .	IV-5	Hardback . . . . .	II-19	Parasit, Wild . . . . .	I-25
Canada Mayflower . . . . .	I-17	Harebell . . . . .	IV-5	<i>Pogonia ophioglossoides</i> . . . . .	II-11
Cardinal Flower . . . . .	III-17	Heather, Bell . . . . .	III-11	<i>Polygala cruciata</i> . . . . .	IV-5
Centaur, American . . . . .	III-5	<i>Helianthus giganteus</i> . . . . .	III-25	<i>Polygala, Fringed</i> . . . . .	I-19
<i>Chelone glabra</i> . . . . .	III-19	<i>Hepatica triloba</i> . . . . .	I-3	<i>Polygala paucifolia</i> . . . . .	I-19
<i>Chrysopsis falcata</i> . . . . .	III-7	Herb Robert . . . . .	IV-9	<i>Polygala polygama</i> . . . . .	III-11
Clover, Yellow or Hop . . . . .	III-23	<i>Houstonia carulea</i> . . . . .	II-3	<i>Polygonatum biflorum</i> . . . . .	I-19
Columbine . . . . .	II-5	<i>Hypericum adpressum</i> . . . . .	IV-7	Purple Flowering-Raspberry . . . . .	II-17
<i>Coptis trifolia</i> . . . . .	I-7	<i>Hypericum perforatum</i> . . . . .	IV-7	<i>Pyrola elliptica</i> . . . . .	II-7
Cranebill . . . . .	I-25	<i>Impatiens pallida</i> . . . . .	III-19	Quaker Ladies . . . . .	II-3
<i>Cypripedium acule</i> . . . . .	II-7	Indian Pipe . . . . .	II-25	Rattlesnake Plantain . . . . .	III-3
<i>Cypripedium spectabile</i> . . . . .	II-21	Indian Tobacco . . . . .	II-15	<i>Rhexia Virginica</i> . . . . .	III-17
Daisy Fleabane . . . . .	III-13	Indian Turnip . . . . .	I-21	Robio's Plantain . . . . .	I-17
				<i>Rosa Carolina</i> . . . . .	III-7
				Rose, Wild Swamp . . . . .	III-7
				<i>Rubus odoratus</i> . . . . .	II-17
				<i>Rudbeckia hirta</i> . . . . .	III-3
				Rue Anemone . . . . .	I-13
				<i>Sabbatia chloroides</i> . . . . .	III-5
				<i>Sabbatia gracilis</i> . . . . .	III-5
				<i>Sabbatia, Slender</i> . . . . .	III-5
				<i>Sabbatia stellaris</i> . . . . .	III-5
				<i>Sanguinaria Canadensis</i> . . . . .	I-7
				Sea Lavender . . . . .	III-23
				Sea Pink . . . . .	III-5
				Self-Heal . . . . .	III-11
				Shin Leaf . . . . .	II-7
				<i>Styrinchium angustifolium</i> . . . . .	II-3
				<i>Smilacina stellata</i> . . . . .	I-9
				Snake-root, White . . . . .	III-21
				Snake's Mouth . . . . .	II-11
				<i>Solidago bicolor</i> . . . . .	IV-17
				<i>Solidago casia</i> . . . . .	IV-21
				<i>Solidago lancoleta</i> . . . . .	IV-19
				<i>Solidago nemoralis</i> . . . . .	IV-15
				<i>Solidago serotina</i> . . . . .	IV-13
				Solomon's Seal . . . . .	I-19
				Solomon's Seal, False . . . . .	I-9
				<i>Spiraea salicifolia</i> . . . . .	II-19
				<i>Spiraea tomentosa</i> . . . . .	II-19
				<i>Spiranthes cernua</i> . . . . .	IV-21
				Star Flower . . . . .	I-9
				<i>Statice Limonium</i> var. <i>Caro-</i>	
				<i>lineana</i> . . . . .	III-23
				Steeple-bush . . . . .	II-19
				<i>Stellaria longifolia</i> . . . . .	II-5
				Stitchwort, Long-leaved . . . . .	II-5
				St. John's-wort, Common . . . . .	IV-7
				St. John's-wort, Upright-iv'd . . . . .	IV-7
				Squand, Long-leaved . . . . .	III-25
				Sunflower, Wild . . . . .	III-25
				Thimble-weed . . . . .	II-21
				<i>Tiarella cordifolia</i> . . . . .	I-17
				Touch-me-not . . . . .	III-19
				<i>Trientalis Americana</i> . . . . .	I-9
				<i>Trifolium agrarium</i> . . . . .	III-23
				<i>Trillium erectum</i> . . . . .	I-11
				<i>Trillium erythrocarpum</i> . . . . .	I-11
				Trillium, Painted . . . . .	I-11
				Turtlehead . . . . .	III-19
				Twin Flower . . . . .	I-13
				Violet, Dog's-Tooth . . . . .	I-7
				Wake-Robin . . . . .	I-11
				Willow-herb, Hairy . . . . .	III-15
				Wind-flower . . . . .	I-13
				Wood-Sorrel, White . . . . .	I-21
				Wood-Sorrel Yellow . . . . .	I-15
				<i>Zizia aurea</i> . . . . .	I-25

	Series	Pp.
	III-	7
ramp	III-	7
s	II-	17
to	III-	3
	I-	13
wides	III-	5
itis	III-	5
ler	III-	5
ris	III-	5
Canadensis	I-	7
	III-	23
	III-	5
	III-	11
	II-	7
angustifolium	II-	3
lata	I-	9
hite	III-	21
	II-	11
r	IV-	17
	IV-	21
lata	IV-	19
ralis	IV-	15
na	IV-	13
	I-	19
l, False	I-	9
olia	II-	19
osa	II-	19
nua	IV-	21
	I-	9
um var. Caro-		
	III-	23
	II-	19
folia	II-	5
ag-leaved	II-	5
, Common	IV-	7
, Upright-lv'd	IV-	7
-leaved	III-	25
d	III-	25
	II-	21
folia	I-	17
	III-	19
ericana	I-	9
arium	III-	23
um	I-	11
Arocarpum	I-	11
ed	I-	11
	III-	19
	I-	13
Tooth	I-	7
	I-	11
Hairy	III-	15
	I-	13
White	I-	21
Yellow	I-	15
	I-	25

