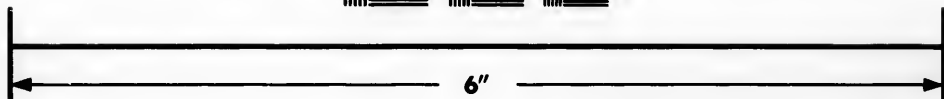
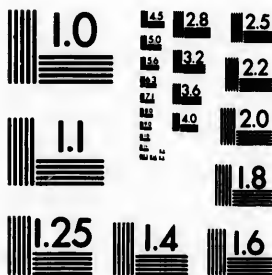


**IMAGE EVALUATION  
TEST TARGET (MT-3)**



**Photographic  
Sciences  
Corporation**

23 WEST MAIN STREET  
WEBSTER, N.Y. 14580  
(716) 872-4503

0  
16  
18  
20  
22  
25  
28  
32  
36

**CIHM/ICMH  
Microfiche  
Series.**

**CIHM/ICMH  
Collection de  
microfiches.**



**Canadian Institute for Historical Microreproductions / Institut canadien de microreproductions historiques**

10  
11  
12  
13  
14  
15

**© 1983**

Technical and Bibliographic Notes/Notes techniques et bibliographiques

The Institute has attempted to obtain the best original copy available for filming. Features of this copy which may be bibliographically unique, which may alter any of the images in the reproduction, or which may significantly change the usual method of filming, are checked below.

L'Institut a microfilmé le meilleur exemplaire qu'il lui a été possible de se procurer. Les détails de cet exemplaire qui sont peut-être uniques du point de vue bibliographique, qui peuvent modifier une image reproduite, ou qui peuvent exiger une modification dans la méthode normale de filmage sont indiqués ci-dessous.

- Coloured covers/  
Couverture de couleur
- Covers damaged/  
Couverture endommagée
- Covers restored and/or laminated/  
Couverture restaurée et/ou pelliculée
- Cover title missing/  
Le titre de couverture manque
- Coloured maps/  
Cartes géographiques en couleur
- Coloured ink (i.e. other than blue or black)/  
Encre de couleur (i.e. autre que bleue ou noire)
- Coloured plates and/or illustrations/  
Planches et/ou illustrations en couleur
- Bound with other material/  
Relié avec d'autres documents
- Tight binding may cause shadows or distortion along interior margin/  
La reliure serrée peut causer de l'ombre ou de la distorsion le long de la marge intérieure
- Blank leaves added during restoration may appear within the text. Whenever possible, these have been omitted from filming/  
Il se peut que certaines pages blanches ajoutées lors d'une restauration apparaissent dans le texte, mais, lorsque cela était possible, ces pages n'ont pas été filmées.
- Additional comments:/  
Commentaires supplémentaires:

- Coloured pages/  
Pages de couleur
- Pages damaged/  
Pages endommagées
- Pages restored and/or laminated/  
Pages restaurées et/ou pelliculées
- Pages discoloured, stained or foxed/  
Pages décolorées, tachetées ou piquées
- Pages detached/  
Pages détachées
- Showthrough/  
Transparence
- Quality of print varies/  
Qualité inégale de l'impression
- Includes supplementary material/  
Comprend du matériel supplémentaire
- Only edition available/  
Seule édition disponible
- Pages wholly or partially obscured by errata slips, tissues, etc., have been refilmed to ensure the best possible image/  
Les pages totalement ou partiellement obscurcies par un feuillet d'errata, une pelure, etc., ont été filmées à nouveau de façon à obtenir la meilleure image possible.

This item is filmed at the reduction ratio checked below/  
Ce document est filmé au taux de réduction indiqué ci-dessous.

10X	12X	14X	16X	18X	20X	22X	24X	26X	28X	30X	32X
						✓					

The copy filmed here has been reproduced thanks to the generosity of:

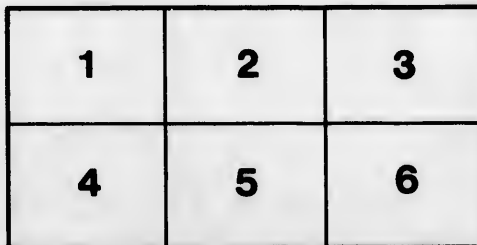
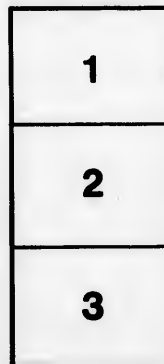
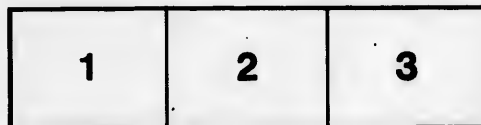
Library of the Public  
Archives of Canada

The images appearing here are the best quality possible considering the condition and legibility of the original copy and in keeping with the filming contract specifications.

Original copies in printed paper covers are filmed beginning with the front cover and ending on the last page with a printed or illustrated impression, or the back cover when appropriate. All other original copies are filmed beginning on the first page with a printed or illustrated impression, and ending on the last page with a printed or illustrated impression.

The last recorded frame on each microfiche shall contain the symbol  $\rightarrow$  (meaning "CONTINUED"), or the symbol  $\nabla$  (meaning "END"), whichever applies.

Maps, plates, charts, etc., may be filmed at different reduction ratios. Those too large to be entirely included in one exposure are filmed beginning in the upper left hand corner, left to right and top to bottom, as many frames as required. The following diagrams illustrate the method:



L'exemplaire filmé fut reproduit grâce à la générosité de:

La bibliothèque des Archives  
publiques du Canada

Les images suivantes ont été reproduites avec le plus grand soin, compte tenu de la condition et de la netteté de l'exemplaire filmé, et en conformité avec les conditions du contrat de filmage.

Les exemplaires originaux dont la couverture en papier est imprimée sont filmés en commençant par le premier plat et en terminant soit par la dernière page qui comporte une empreinte d'impression ou d'illustration, soit par le second plat, selon le cas. Tous les autres exemplaires originaux sont filmés en commençant par la première page qui comporte une empreinte d'impression ou d'illustration et en terminant par la dernière page qui comporte une telle empreinte.

Un des symboles suivants apparaîtra sur la dernière image de chaque microfiche, selon le cas: le symbole  $\rightarrow$  signifie "A SUIVRE", le symbole  $\nabla$  signifie "FIN".

Les cartes, planches, tableaux, etc., peuvent être filmés à des taux de réduction différents. Lorsque le document est trop grand pour être reproduit en un seul cliché, il est filmé à partir de l'angle supérieur gauche, de gauche à droite, et de haut en bas, en prenant le nombre d'images nécessaire. Les diagrammes suivants illustrent la méthode.

A

[BEING T

Astr

*DERIV*

A Po  
COMPRISI

Sold by

The Newfoundland  
ALMANAC,  
FOR THE YEAR OF OUR LORD  
1867,

[BEING THE LATTER PART OF THE THIRTIETH AND THE BEGINNING  
OF THE THIRTY-FIRST YEAR OF THE REIGN OF  
HER MAJESTY QUEEN VICTORIA]

CONTAINING

Astronomical, Statistical, Commercial, Local

—AND—

GENERAL INFORMATION,  
DERIVED FROM THE MOST AUTHENTIC SOURCES.

—ALSO,—

A Post Office Directory for Newfoundland,  
COMPRISING AN ALPHABETICAL LIST OF THE TOWNS, VILLAGES AND  
SETTLEMENTS IN THE COLONY, WITH THE POST  
TOWNS AND WAY OFFICES.

---

COMPILED, PRINTED AND PUBLISHED BY

JOSEPH WOODS,

Sold by THOMAS MCCONNAN, 212 Water Street, St John's.

---

ST. JOHN'S, NEWFOUNDLAND :

MDCCLXVI.

RARE  
AY  
420  
N49N4  
1867

The  
NEW  
hope  
inaccu  
or exp  
trusts

The  
worthy  
for the  
contain  
work.  
ed for t

The  
public  
been re  
equally  
support  
signed  
efforts  
their a

St. Joh

## TO THE PUBLIC.

---

The Compiler has much pleasure in laying before the Public the NEWFOUNDLAND ALMANAC FOR THE YEAR 1867, and indulges the hope that due consideration will be made for such imperfections or inaccuracies as may be found in its pages. He has spared no labor or expense to make it a popular and useful book of reference, and trusts it will be found quite equal if not superior to its predecessors.

The Compiler is again indebted to JAMES CAMPBELL, Esq., the worthy and talented Principal of the St. John's Nautical Academy, for the astronomical calculations and other scientific information contained in the introductory and Calendar pages of the present work. To the Heads of Departments, and others, he is also indebted for their kindness in furnishing all necessary information.

The Compiler would express his acknowledgments to the general public for the very favorable manner in which the ALMANAC has been received hitherto, and flatters himself that *that* for 1867 will be equally favored, and command if possible a still larger share of public support. To the advertising patrons of the ALMANAC the undersigned is indebted for their continued favors, and hopes that the efforts made to give their notices an attractive form will meet with their approval.

JOSEPH WOODS.

St. John's, Dec., 1866.



## Contents.

---

Advertisements	72
Atlantic Telegraph Company	72
Anglo-American Telegraph Company	79
Abstract from Newfoundland Census of 1857	80
Appendix	26
Board of Works Department	27
Boards of Road Commissioners (Outports)	52
Board of Health	51
Banks—Savings' Bank	64
Union Bank of Newfoundland	64
Commercial Bank of Newfoundland	63
Barristers and Attornies Supreme Court	53
Barristers and Attornies, Northern District	76
Benevolent Institutions, Charitable Societies, &c.	8
Calendar, Chronological Eras, &c.	8
Calendar Pages—Moon's Phases, Sun's Rising and Setting at St. John's every day in the year, Sun's Declination, Equation of Time, High Water at St. John's every Morning and Afternoon, Moon's Rising, Memoranda	9-20
Colonial Secretary's Office	25
Court Houses and Keepers	29
Commissioners for Erection of Public Wharf (Catalina)	30
Commissioners for Erection of Breakwaters	30
Commissioners for Consolidation of Statute Laws of the Colony	33
Commissioners of Poor	51
Commissioners for Reduction of Public Debt	51
Commissioners of Wrecked Property	51
Commissioners of Pilots and Rates of Pilotage	52
Commissioners of Affidavits, &c., in S. and C. Courts	54
Colonial and Continental Church Society	57
Chamber of Commerce, (St. John's)	64
Catholic Institute	71
Difference of Time at various places on the Globe as com- pared with St. John's	8
Departmental Officers of the Government	24
District Surgeons	30
Eclipses for the year 1867	6
Executive Council	23
Educational Institutions, Protestant and Roman Catholic Education Boards, &c., &c.	56
Ecclesiastical Department, &c., &c.	61
Fixed and Moveable Festivals, Anniversaries, &c.	8

Financ  
 Foreign  
 Govern  
 for  
 Gaols a  
 House  
 Her Ma  
 Health  
 Inspect  
 Insuran  
 Judicial  
 Att  
 Jus  
 Joint S  
 Legi-lat  
 Light H  
 Medical  
 Military  
 Masonic  
 Newfoun  
 Newfoun  
 Naval E  
 Notaries  
 Newspap  
 New Yor  
 Planetar  
 Post Offi  
 Post  
 Queen's  
 Royal Fa  
 Revenue  
 Revenue  
 Surveyor  
 Superint  
 St. John's  
 St. John's  
 St. John's  
 St. John's  
 St. John's  
 St. John's  
 St. John's  
 St. John's  
 Ships Ow  
 Sterling  
 Cour  
 Treasury  
 Table of  
 Table she  
 1842  
 Value of  
 Wesleyan

	Financial Secretary's Department	26
	Foreign Consuls	64
	Governor, Commander-in-Chief and Vice-Admiral of Newfoundland	23
	Gaols and Gaolers	29
	House of Assembly	24
	Her Majesty's Chief Officers of State	22
	Health Wardens (St. John's)	52
	Inspectors of Weights and Measures	56
	Insurance Companies—Fire, Life, and Marine	73
72	Judicial Department, comprising Lists of Barristers and	
72	Attornies of Supreme Court, Stipendiary Magistrates,	
79	Justices of the Peace, &c., &c.	53
80	Joint Stock Companies, Public Societies, &c.	75
26	Legislative Council	23
27	Light Houses and Ligh's	30
52	Medial Officer for Sick Seamen (Port of St. John's)	52
51	Military Establishment	65
64	Masonic Lodges	71
64	Newfoundland Wesleyan Academy	58
53	Newfoundland Church Society	61
53	Newfoundland Rifle Volunteers	66
76	Naval Establishment	67
8	Notaries Public	64
	Newspapers published in the Colony	70
	New York, Newfoundland and London Telegraph Company	72
	Planetary Notice—Solar System	7
9-20	Post Office Department, including Postal Routes, Rates of	
25	Postage, and Post Office Directory for Newfoundland	34-51
29	Queen's Printer	70
30	Royal Family of England	21
30	Revenue Establishment, &c., &c.	25
33	Revenue and Expenditure, from 1856 to 1865	67
51	Surveyor General's Department	26
51	Superintendent of Mercantile Marine	26
51	St. John's Hospital	30
52	St. John's Poor House	30
54	St. John's Lunatic Asylum	30
57	Stipendiary Magistrates	54
64	St. John's Academy	56
71	St. John's Athenæum	71
	St. John's and Newfoundland Bible Society	71
8	Ships Owned and Registered in Newfoundland	67
24	Sterling Value of Imports and Exports from and to each	
30	Country in 1865.	73
6	Treasury Department	26
23	Table of Customs Duties	68
	Table shewing Quantity and Value of Fish Exported from	
	1842 to 1865	67
56	Value of Imports and Exports from 1853 to 1865	67
61	Wesleyan School and Agency Society	58
8		

## Eclipses, 1867.

In the year 1867 there will be *four Eclipses, two of the SUN, and two of the MOON.*

The first, March the 6th—*an annular Eclipse of the Sun.*—This Eclipse will be invisible in Newfoundland, for no part of it will be seen in the Western Continent. It will be visible in Europe, in the greater part of Asia and Africa, and North Atlantic Ocean.

The Second, March the 20th—*a partial Eclipse of the Moon.*—The first part of this Eclipse will be visible in Newfoundland, as the First contact with Penumbra, will be at 2h. 31m. 32s. a.m.

The first contact with Shadow ..... at 3h. 45m. 11s. a.m.

The Middle of Eclipse ..... at 5h. 18m. 0s. a.m.

[Mean time at St. John's, N.F.]

At this time the Moon will be setting, so that the latter part of Eclipse cannot be seen in the Island.

The third, August 29th—*a total Eclipse of the Sun.* This Eclipse may be said to be invisible in the Northern Hemisphere, as the Northern line of simple contact reaches only to Latitude 3.37 N. It will be visible in South America, in part of South Pacific Ocean, in all the South Atlantic, and at the Cape of Good Hope.

The fourth, September 13th—*a partial Eclipse of the Moon.* This Eclipse will be visible in Newfoundland, and above our horizon during the whole time of its continuance. If there shall be a clear sky, this will be an interesting phenomenon to such as are desirous of making observations on it. The Moon will be rising just at the time her eastern edge will be entering the Earth's Penumbra:—

Moon's first contact with Penumbra .... 6h. 12m. 35s. p.m.

First contact with Shadow ..... 7h. 26m. 41s. p.m.

Middle of Eclipse ..... 8h. 55m. 29s. p.m.

Last contact with Shadow ..... 10h. 24m. 17s. p.m.

Last contact with Penumbra ..... 11h. 38m. 23s. p.m.

[Mean time at St. John's, N.F.]

NOTE.—The Tide Tables (in the Calendar pages) may be rendered applicable to various other places on the coast, by simply adding or subtracting as the case may be, the difference between the times of High Water on the Full and Change of the Moon at St. John's, and the time of the full tide at any other harbor; for example, to find the time of High Water at any of the principal harbors of Conception Bay, add 45 minutes to the time at which it will be High Water at St. John's; for Placentia Bay, add 2 hours; for St. Peters, 1h. 50m.; for Ferrolle, on the French Shore, 4 hours, &c.—See table LVII. of Norie's Epitome.

The 1  
are pri  
EARTH  
the prim  
because  
called su

Distan  
Mercury,  
Venus, 6  
Earth, 95  
Mars, 142  
Jupiter, 4  
Saturn, 8  
Uranus, 1  
Mercury  
telescope,  
above the  
Morning  
after the S  
consequen  
the Sun th  
Mars will  
year. Jup  
Morning S  
year.

True Latitu  
Longitude

PLANETARY NOTICE—SOLAR SYSTEM.

The Planets of the Solar System are 29 in number. Of them, 11 are *primary*, and 18 *secondary*, or Moons. Of these Moons, our EARTH has one, *Jupiter* four, *Saturn* seven, and *Uranus* six. Of the primary planets, two are called *inferior*, viz., *Mercury* and *Venus* because they are nearer the *Sun* than the *Earth*; the others are called *superior*, because farther from the *Sun* than the *Earth*.

<i>Distance from the Sun.</i>	<i>Magnitude—diameters in miles.</i>	<i>Len. of year.</i>
Mercury, 37 millions of miles	3,140	3 months.
Venus, 68 millions of miles	7,700	7½ ditto
Earth, 95 millions of miles	7,912	1 year
Mars, 142 millions of miles	4,200	2 ditto
Jupiter, 485 millions of miles	89,000	12 ditto
Saturn, 890 millions of miles	79,000	29 ditto
Uranus, 1800 millions of miles	35,000	84 ditto

Mercury is too near the Sun to be seen from the Earth without a telescope, but Venus, Mars, and Jupiter can always be seen when above the horizon if the weather be clear, and are commonly called Morning or Evening Stars according as they rise or set before or after the Sun. This year Venus will rise and set before the Sun, and consequently will be a Morning Star till October the 4th, and after the Sun the remainder of the year, and thus will be an Evening Star. Mars will be an Evening Star from January 12th to the end of the year. Jupiter will be an Evening Star till February the 8th, then Morning Star till August 26th, then Evening Star the rest of the year.

St. John's.

True Latitude of Church Hill .....	47.34 North.
Longitude (West of Greenwich) .....	52.42 West.

CALENDAR.

Golden Number .....	6	Dominical Letter .....	F.
Epac .....	25	Roman Indiction .....	10
Solar Cycle .....	28	Julian Period .....	6580

FIXED AED MOVEABLE FESTIVALS, ANNIVERSARIES, &c.

Epiphany	January 6	Rogation Sunday	May 26
Septuagesima Sunday	Feb. 17	Ascension Day	do 30
St. David	March 1	Pontecost	June 9
Shrove Sunday	do 3	Trinity Sunday	do 16
Ash Wednesday	do 6	Corpus Christi	do 20
First Sunday in Lent	do 10	Accession Queen Victoria	do 20
St. Patrick	do 17	Proclamation	do 21
Annunciation—Lady Day	do 25	St. John Baptist	do 24
Palm Sunday	April 14	St. Michael	Sept. 29
Good Friday	do 19	Birth Prince of Wales	Nov. 9
Easter Sunday	do 21	St. Andrew	do 30
St. George	do 23	First Sunday in Advent	Dec. 1
Low Sunday	do 28	St. Thomas	do 21
Birth of Queen Victoria	May 24	Christmas Day	do 25

The Year 5628 of the Jewish Era commences on September 30, 1867.

Ramadan (Month of Abstinence observed by the Turks) commences on January 7, and December 27, 1867.

The Year 1284 of the Mohammedan Era commences on May 5, 1867.

A TABLE

Shewing the difference of Time at various places on the Globe, as compared with St. John's, Newfoundland.

When it is Noon at St. John's it is

West. Longitude.	{	18 minutes past 11	o'clock A. M.	at Charlottetown, P.E.I.		
		17 do 11	do	Halifax.		
		13 do 11	do	St. John, N.B.		
		50 do 10	do	Portland, Me.		
		47 do 10	do	Boston, Mass.		
		46 do 10	do	Quebec.		
		34 do 10	do	New York.		
		30 do 10	do	Philadelphia.		
		23 do 10	do	Washington.		
		21 do 7	do	St. Francisco, California.		
		14 do 7	do	St. Juan, Vancouver's Island.		
		East. Long.	{	30 do 3	P. M.	Greenwich.
				20 do 4	do	Rome.
				26 do 5	do	Constantinople.
52 do 5	do			Jerusalem.		
50 do 8	do			Madras, E.I.		
8 do 11	do	Canton.				

NEW M  
FIRST  
FULL M  
LAST Q

Day of W.	Day of M.	
T	1	h
W	2	7
Th	3	7
F	4	7
S	5	7
Su	6	7
M	7	7
T	8	7
W	9	7
Th	10	7
F	11	7
S	12	7
Su	13	7
M	14	7
T	15	7
W	16	7
Th	17	7
F	18	7
S	19	7
Su	20	7
M	21	7
T	22	7
W	23	7
Th	24	7
F	25	7
S	26	7
Su	27	7
M	28	7
T	29	7
W	30	7
Th	31	7

JANUARY  
mans from  
day of the y  
prayers to f  
year. Janus  
and looking  
ing forward

January, 1867.

MOON'S PHASES.

NEW MOON ..... 5th day, 8h, 59m, Evening  
 FIRST QUARTER ..... 13th day, 1h, 3m, Evening  
 FULL MOON ..... 20th day, 4h, 5m, Morning  
 LAST QUARTER ..... 27th day, 11h, 19m, Morning

Day of W.	Day of M.	Sun		G. app. time.		High		Moon's Rising. Me- moranda, &c.
		rises	sets	Sun's	Equa	Water at	St. John's.	
		at		Decli-	of			
		St. John's.		nation.	time.			
		h.	m.	o	m. a.	p. m.	a. m.	
F	1	7 55	4 13	S 23 2	3 44	4 57	4 24	Moon rises 40 min:
do	2	7 54	4 14	22 57	4 12	5 58	5 29	past 3, morning.
do	3	7 54	4 15	22 52	4 40	6 44	6 22	Moon rises 29 min.
do	4	7 54	4 10	22 46	5 8	7 27	7 15	past 6, morning.
do	5	7 54	4 17	22 39	5 35	8 4	7 45	
do	6	7 54	4 19	22 32	6 2	8 40	8 21	Epiphany.
do	7	7 53	4 20	22 25	6 28	9 12	8 55	
do	8	7 53	4 21	22 17	6 54	9 45	9 29	
do	9	7 53	4 22	22 9	7 19	10 21	10 3	R. Catholic Cathed- ral opened, 1850.
do	10	7 52	4 24	22 0	7 44	10 57	10 38	
do	11	7 52	4 25	21 51	8 8	11 36	11 17	
do	12	7 51	4 26	21 42	8 31		11 57	1 — First Colonial Legislature met, 1833.
do	13	7 51	4 27	21 32	8 54	0 43	0 19	
do	14	7 50	4 29	21 21	9 17	1 38	1 8	
do	15	7 50	4 30	21 11	9 38	2 48	2 11	
do	16	7 49	4 31	20 59	9 59	4 5	3 26	28—Colonial Build- ing opened, 1850.
do	17	7 48	4 33	20 48	10 19	5 21	4 45	
do	18	7 47	4 34	20 36	10 39	6 26	5 55	
do	19	7 46	4 36	20 24	10 57	7 23	6 54	
do	20	7 45	4 37	20 11	11 15	8 12	7 48	Moon rises 52 min. past 5, evening.
do	21	7 44	4 38	19 58	11 32	9 1	8 38	Moon rises 11 min. past 8, evening.
do	22	7 44	4 40	19 44	11 49	9 46	9 25	Moon rises 27 min. past 10, evening.
do	23	7 43	4 42	19 30	12 4	10 28	10 7	
do	24	7 42	4 43	19 16	12 19	11 8	10 48	
do	25	7 41	4 45	19 2	12 33	11 49	11 29	
do	26	7 40	4 46	18 47	12 47	0 9		
do	27	7 38	4 48	18 31	12 59	0 53	0 31	Moon rises 29 min. past 0, morning.
do	28	7 37	4 49	18 16	13 11	1 41	1 16	Moon rises 27 min. past 2, morning.
do	29	7 36	4 51	18 0	13 22	2 46	2 10	
do	30	7 35	4 52	17 44	13 32	4 0	3 22	
do	31	7 33	4 54	S 17 27	13 42	5 14	4 37	

JANUARY—January (Latin *Januarius*) was so called by the Romans from Janus, one of their superior deities, to whom the first day of the year was sacred, and through whom they offered their prayers to the gods; hence the name is used to signify gate of the year. Janus was represented with two faces; one old and wrinkled, and looking backward; the other face young and smiling, and looking forward.

**February, 1867.**

MOON'S PHASES.

NEW MOON.....	4th day,	2h, 45m,	Evening
FIRST QUARTER.....	11th day,	10h, 9m,	Evening
FULL MOON.....	18th day,	4h, 10m,	Evening
LAST QUARTER.....	26th day,	8h, 1m,	Morning

Day of W.	Day of M.	Sun		G. app. time.		High		Moon's Rising, Me- moranda, &c.
		rises at St John's.	Sun sets	Sun's Decli- nation.	Equa. of time. add.	Water at St. John's.		
		h. m.	h. m.	o	m. s.	p. m.	a. m.	
F	1	7 32	4 55	S 17 10	13 50	6 16	5 48	Moon rises 4 min. past 5, morning.
S	2	7 31	4 57	16 53	13 58	7 2	6 41	
Su.	3	7 29	4 59	16 36	14 5	7 43	7 23	
M	4	7 28	5 0	16 18	14 11	8 20	8 1	2—Candlemas Day.
T	5	7 27	5 2	16 0	14 16	8 56	8 38	
W	6	7 25	5 3	15 42	14 21	9 30	9 12	Fish. Conven. laid be- fore Legis., 1857.
Th.	7	7 24	5 5	15 23	14 24	10 2	9 45	
F	8	7 22	5 7	15 4	14 27	10 39	10 21	
S	9	7 20	5 8	14 45	14 29	11 15	10 57	
Su.	10	7 19	5 10	14 26	14 30	11 57	11 35	Q. Victoria mar. 1840
M	11	7 17	5 11	14 6	14 31	0 19		
T	12	7 16	5 13	13 46	14 30	1 11	0 43	17 — B. I. Society founded, 1806.
W	13	7 14	5 15	13 26	14 29	2 16	1 41	
Th.	14	7 13	5 16	13 6	14 27	3 39	2 58	Valentine's Day.
F	15	7 11	5 18	12 46	14 25	5 6	4 21	
S	16	7 9	5 19	12 25	14 21	6 17	5 44	[day.
Su.	17	7 7	5 21	12 4	14 17	7 13	6 47	Septuagesima Sun-
M	18	7 6	5 22	11 43	14 12	8 3	7 40	Moon rises 48 min. past 5, evening.
T	19	7 4	5 24	11 22	14 6	8 47	8 25	
W	20	7 3	5 25	11 0	14 0	9 27	9 8	Moon rises 6 min. past 8, evening.
Th.	21	7 2	5 26	10 39	13 53	10 6	9 46	
F	22	7 0	5 27	10 17	13 46	10 40	10 24	Moon rises 16 min. past 10, evening.
S	23	6 59	5 29	9 55	13 38	11 17	11 0	
Su.	24	6 57	5 30	9 33	13 29	11 51	11 35	
M	25	6 55	5 32	9 11	13 20	0 10		Moon rises 15 min. past 0, morning.
T	26	6 52	5 34	8 49	13 10	0 52	0 31	
W	27	6 51	5 35	8 26	12 59	1 46	1 16	Moon rises 9 min. past 2, morning.
Th.	28	6 49	5 37	S 8 3	12 48	2 44	2 20	

FEBRUARY—February (Latin, *Februarius*) received its name from Februalia, a feast of sacrifices and purifications held by the Romans in this month, in the vain hope of being cleansed from the sins of the whole year. It corresponds to ADAR (Ezra vi. 15), the sixth civil, and twelfth sacred month of the Jews. By the Saxons it was called *Sproutkele*, as cabbages begin to sprout now; and also *Sal-monath*, the month when pancakes were offered to Sol, or the Sun.

Day of W.	Day of M.	h.
F	1	6
S	2	6
Su.	3	6
M	4	6
T	5	6
W	6	6
Th.	7	6
F	8	6
S	9	6
Su.	10	6
M	11	6
T	12	6
W	13	6
Th.	14	6
F	15	6
S	16	6
Su.	17	6
M	18	6
T	19	6
W	20	6
Th.	21	6
F	22	6
S	23	6
Su.	24	6
M	25	5
T	26	5
W	27	5
Th.	28	5
F	29	5
S	30	5
Su.	31	5

March.—  
in honor of  
went out  
(Neh. ii. 1)  
the sacred  
wonath, th

**March, 1867.**

MOON'S PHASES.

NEW MOON.....	6th day,	6h, 7m,	Morning
FIRST QUARTER.....	13th day,	5h, 16m,	Morning
FULL MOON.....	20th day,	5h, 24m,	Morning
LAST QUARTER.....	28th day,	5h, 16m,	Morning

Day of W.	Day of M.	Sun		G. app. time.		High		Moon's Rising, Me- moranda, &c.				
		rises at St. John's.	Sets at St. John's.	Sun's Decli- nation.	Equa- of time. add.	Water at St. John's.	St. John's.					
		h.	m.	h.	m.	o	m	s.	p.	m.	a.	m.
F	1	6 45	5 39	S	7 41	12 37	4 18	3 59				
S	2	6 44	5 41		7 18	12 25	5 36	5 0				
Su.	3	6 42	5 42		6 55	12 12	6 34	6 8				
M	4	6 40	5 44		6 32	11 59	7 16	6 56				
T	5	6 38	5 45		6 9	11 46	7 56	7 37				
W	6	6 36	5 47		5 46	11 32	8 32	8 13				
Th.	7	6 34	5 48		5 23	11 18	9 4	8 48				
F	8	6 32	5 50		4 59	11 3	9 40	9 22				
S	9	6 30	6 51		4 36	10 48	10 18	9 59				
Su.	10	6 28	5 53		4 12	10 33	10 56	10 37				
M	11	6 26	5 54		3 49	10 17	11 39	11 17				
T	12	6 24	5 56		3 25	10 1	0 2					
W	13	6 22	5 57		3 2	9 45	0 54	0 27				
Th.	14	6 20	5 58		2 38	9 28	1 58	1 23				
F	15	6 18	5 59		2 14	9 11	3 27	2 41				
S	16	6 16	6 1		1 51	8 54	4 55	4 11				
Su.	17	6 14	6 3		1 27	8 36	6 7	5 35				
M	18	6 12	6 4		1 3	8 19	6 59	6 33				
T	19	6 10	6 6		0 40	8 1	7 47	7 24				
W	20	6 8	6 7	S	0 16	7 43	8 28	8 8				
Th.	21	6 6	6 8	N	0 8	7 25	9 3	8 45				
F	22	6 4	6 10		0 32	7 6	9 38	9 21				
S	23	6 2	6 11		0 55	6 48	10 13	9 56				
Su.	24	6 0	6 13		1 19	6 29	10 46	10 30				
M	25	5 58	6 14		1 42	6 11	11 19	11 3				
T	26	5 56	6 16		2 6	5 53	11 56	11 36				
W	27	5 54	6 17		2 30	5 34	0 15					
Th.	28	5 52	6 18		2 53	5 16	1 1	0 37				
F	29	5 50	6 19		3 16	4 57	2 7	1 30				
S	30	5 48	6 21		3 40	4 39	3 29	2 48				
Su.	31	5 46	6 23	N	4 3	4 21	4 48	4 8				

**March.**—March (Latin, *Martius*) was so called by the Romans in honor of Mars, their god of war. In this month the Gothic tribes went out on warlike expeditions. It answers to NISAN, or ABIB (Neh. ii. 1; Deut. xvi. 1), the seventh of the civil, and the first of the sacred year of the Jews. By the Saxons it was named *Hlyd-wonath*, the loud or windy month.

Evening  
Evening  
Evening  
Morning

Rising, Me-  
da, &c.

es 4 min.  
morning.

emas Day.

ven. laid be-  
Legis., 1857.

ria mar. 1840

. I. Society  
ed, 1806.  
e's Day.

[day.  
esima Sun-  
ises 48 min.  
s, evening.  
ises 6 min.  
s, evening.  
ises 16 min.  
O, evening.

ises 15 min.  
morning.  
ises 9 min.  
2, morning.

its name from  
d by the Ro-  
ased from the  
ra vi. 15), the  
By the Saxons  
now; and also  
to Sol, or the



**April, 1867.**

MOON'S PHASES.

NEW MOON .....	4th day, 6h, 33m, Evening
FIRST QUARTER .....	11th day, 11h, 38m, Morning
FULL MOON .....	18th day, 7h, 65m, Evening
LAST QUARTER .....	27th day, 10h, 30m, Evening

Day of W.	Day of M.	Sun		G. app. time.		High		Moon's Rising, Memoranda, &c.
		rises at St. John's.	Sun sets at St. John's.	Sun's Declination.	Equa. of time.	Water at St. John's.		
		h. m.	h. m.	o	m. s.	p. m.	a. m.	
M	1	5 44	6 24	N 4 26	4 2	5 55	5 23	Moon rises 8 min. past 4, morning.
T	2	5 42	6 25	4 49	3 44	6 41	6 20	
W	3	5 40	6 27	5 12	3 26	7 22	7 2	
Th.	4	5 38	6 28	5 35	3 9	8 0	7 42	
F	5	5 36	6 30	5 58	2 51	8 37	8 17	
S	6	5 34	6 31	6 21	2 33	9 15	8 56	21—Easter Sunday.
Su.	7	5 32	6 32	6 43	2 16	9 56	9 35	
M	8	5 31	6 33	7 6	1 59	10 37	10 17	23—St. George.
T	9	5 28	6 35	7 28	1 42	11 23	11 0	
W	10	5 26	6 36	7 51	1 26	11 47	10 44	28—Low Sunday.
Th.	11	5 24	6 38	8 13	1 9	0 44	0 12	
F	12	5 22	6 39	8 35	0 53	1 52	1 16	
S	13	5 20	6 41	8 57	0 38	3 17	2 35	Catholic Eman. 1829.
Su.	14	5 18	6 42	9 18	0 22	4 41	3 59	Palm Sunday.
M	15	5 16	6 44	9 40	0 7	5 50	5 18	
T	16	5 15	6 45	10 1	0 8	6 42	6 18	19—Good Friday.
W	17	5 13	6 46	10 23	0 23	7 25	7 5	
Th.	18	5 11	6 48	10 44	0 37	8 1	7 44	Moon rises 48 min. past 6, evening.
F	19	5 9	6 49	11 5	0 50	8 37	8 20	
S	20	5 7	6 50	11 25	1 4	9 11	8 55	Moon rises 50 min. past 8, evening.
Su.	21	5 5	6 52	11 46	1 17	9 45	6 29	
M	22	5 4	6 53	12 6	1 29	10 17	10 2	Moon rises 42 min. past 10, evening.
T	23	5 2	6 54	12 26	1 41	10 51	10 33	
W	24	5 0	6 56	12 46	1 52	11 27	11 7	
Th.	25	4 58	6 57	13 6	2 4	11 47	11 17	Moon rises 17 min. past 0, morning.
F	26	4 56	6 59	13 25	2 14	0 32	0 9	
S	27	4 55	7 0	13 45	2 28	1 27	0 58	Moon rises 32 min. past 1, morning.
Su.	28	4 53	7 2	14 4	2 34	2 42	2 3	
M	29	4 51	7 3	14 23	2 43	3 57	3 19	Moon rises 41 min. past 2, morning.
T	30	4 50	7 4	N 14 41	2 51	5 7	4 34	

Equation of time to be added to apparent time to the 15th, and to be subtracted the remainder of the month:

APRIL.—April (Latin *Aprilis*) is so call-d from *aperire*, 'to open' in allusion to the opening of young buds of trees and flowers, and the general development of vegetation at this season.

NEW M  
FIRST  
FULL M  
LAST Q

Day of W.	Day of M.
W	1
Th.	2
F	3
S	4
Su.	5
M	6
T	7
W	8
Th.	9
F	10
S	11
Su.	12
M	13
T	14
W	15
Th.	16
F	17
S	18
Su.	19
M	20
T	21
W	22
Th.	23
F	24
S	25
Su.	26
M	27
T	28
W	29
Th.	30
F	31

MAY.—  
most beau  
of Mercur  
month was  
the sacred

**May, 1867.**

MOON'S PHASES.

NEW MOON .....	4th day, 4h, 10m, Morning
FIRST QUARTER.....	10th day, 6h, 34m, Evening
FULL MOON .....	18th day, 10h, 22m, Morning
LAST QUARTER .....	26th day, 1h, 52m, Evening

Day of W.	Day of M.	Sun		G. app. time.		High		Moon's Rising, Memoranda, &c.
		rises at St. John's.	Sun sets at St. John's.	Sun's Declination.	Equa of time. subt.	Water at St. John's.		
		h. m.	h. m.	o	m. s.	p. m.	a. m.	
W	1	4 48	7 6	N 14 59	2 59	6 2	5 37	S.S. Philip and James
Th.	2	4 47	7 7	15 18	3 6	6 51	6 25	
F	3	4 45	7 8	15 35	3 13	7 29	7 9	
S	4	4 43	7 10	15 53	3 19	8 11	7 50	
SU.	5	4 42	7 11	16 10	3 25	8 53	8 32	Napoleon died, 1821
M	6	4 40	7 12	16 27	3 30	9 37	9 15	
T	7	4 39	7 14	16 44	3 35	10 23	9 59	20—Fou. stone Catho.
W	8	4 38	7 15	17 1	3 39	11 13	10 47	Cathe. laid, 1841.
Th.	9	4 36	7 16	17 17	3 42		11 38	
F	10	4 35	7 18	17 33	3 45	0 36	0 4	26!— Rogation Sun-
S	11	4 33	7 19	17 48	3 47	1 41	1 8	day.
SU.	12	4 32	7 20	18 4	3 49	2 57	2 19	
M	13	4 31	7 21	18 19	3 51	4 10	3 35	
T	14	4 29	7 23	18 34	3 51	5 20	4 48	
W	15	4 28	7 24	18 48	3 51	6 12	5 47	
Th.	16	4 27	7 25	19 2	3 51	6 57	6 33	Moon rises 42 min.
F	17	4 26	7 27	19 16	3 50	7 37	7 19	past 5, evening.
S	18	4 24	7 28	19 29	3 48	8 13	7 56	Moon rises 40 min.
SU.	19	4 23	7 29	19 43	3 46	8 48	8 30	past 7, evening.
M	20	4 22	7 30	19 55	3 44	9 22	9 6	Moon rises 27 min.
T	21	4 21	7 31	20 8	3 41	9 55	9 39	past 9, evening.
W	22	4 20	7 32	20 20	3 37	10 29	10 11	Moon rises 54 min.
Th.	23	4 19	7 33	20 32	3 32	11 5	10 46	past 10, evening.
F	24	4 18	7 34	20 43	3 28	11 44	11 23	Q Victoria born 1819.
S	25	4 17	7 35	20 54	3 22	0 7		Moon rises 7 min.
SU.	26	4 16	7 36	21 5	3 16	0 55	0 30	past 0, morning.
M	27	4 15	7 38	21 15	3 10	1 55	1 25	Moon rises 8 min.
T	28	4 14	7 40	21 25	3 3	3 9	2 31	past 1, mornng.
W	29	4 13	7 41	21 35	2 56	4 13	3 42	Moon rises 4 min.
Th.	30	4 13	7 41	21 44	2 48	5 16	4 45	past 2, morning.
F	31	4 12	7 42	N 21 53	3 40	6 9	5 43	30—Ascension Day.

MAY.—May (Latin *Maius*) is so denominated from Maia, the most beautiful of the constellation Pleiades, and the fabled mother of Mercury, one of the false deities. The corresponding Jewish month was SIVAN (Esth. viii. 9), the ninth of the civil, and third of the sacred year.

**June, 1867.**

MOON'S PHASES.

NEW MOON..... 2d day, 11h, 42m, Morning  
 FIRST QUARTER.... 9th day, 3h, 6m, Morning  
 FULL MOON..... 17th day, 1h, 24m, Evening  
 LAST QUARTER ..... 25th day, 1h, 57m. Evening

Day of W.	Day of M.	Sun		G. app. time.		High		Moon's Rising, Me- moranda, &c.
		rises	sets	Sun's Declination.	Equa of time.	Water at St. John's.		
		h. m.	h. m.	o	m. s.	p. m.	a. m.	
S	1	4 12	7 43	N 22	1 2 31	6 59	6 34	
Su.	2	4 12	7 44	22	9 2 22	7 48	7 24	16—Trinity Sunday.
M	3	4 11	7 45	22	17 2 12	8 36	8 12	
T	4	4 10	7 45	22	25 2 2	9 24	8 59	20—Corpus Christi.
W	5	4 10	7 46	22	31 1 52	10 13	9 49	
Th.	6	4 10	7 47	22	38 1 42	11 5	10 38	20—Accession Queen Victoria.
F	7	4 9	7 48	22	44 1 31	11 55	11 31	21—Proclamation.
S	8	4 9	7 48	22	50 1 20	0 23		Pentecost. — Great
Su.	9	4 9	7 49	22	55 1 8	1 20	0 51	Fire, 1846.
M	10	4 8	7 50	23	0 0 57	2 28	1 54	St Barnabas.
T	11	4 8	7 51	23	5 0 45	3 36	3 3	
W	12	4 8	7 51	23	9 0 33	4 37	4 5	24—St. John Baptist.
Th.	13	4 7	7 52	23	13 0 20	5 38	5 8	29—St. Peter.
F	14	4 7	7 52	23	16 0 8	6 30	6 6	Mag. Charta sig. 1215
S	15	4 6	7 53	23	19 0 4	7 14	6 52	Moon rises 24 min.
Su.	16	4 6	7 53	23	21 0 17	7 53	7 34	past 7, evening.
M	17	4 6	7 54	23	23 0 30	8 30	8 10	Moon rises 57 min.
T	18	4 5	7 54	23	25 0 43	9 3	8 47	past 8, evening.
W	19	4 6	7 55	23	26 0 55	9 38	9 20	Moon rises 10 min:
Th.	20	4 7	7 55	23	27 1 8	10 11	9 54	past 10, evening.
F	21	4 7	7 55	23	28 1 21	10 47	10 28	Moon rises 11 min.
S	22	4 8	7 56	23	28 1 34	11 26	11 6	past 11, evening.
Su.	23	4 8	7 56	23	27 1 47		11 45	Midsummer.
M	24	4 9	7 56	23	26 1 59	0 28	0 6	Moon rises 6 min.
T	25	4 9	7 56	23	25 2 13	1 22	0 53	past 0, morning.
W	26	4 10	7 56	23	23 2 25	2 23	1 51	Moon rises 9 min.
Th.	27	4 10	7 56	23	21 2 38	3 30	2 58	past 1, morning.
F	28	4 10	7 56	23	19 2 50	4 36	4 2	past 1, morning.
S	29	4 11	7 56	23	16 3 3	5 39	5 7	Moon rises 27 min.
Su.	30	4 11	7 56	N 23	13 3 15	6 39	6 10	past 2, morning.

Equation of time to be subtracted from apparent time to the 14th and to be added the remainder of the month.

JUNE.—June, Latin (*Junius*), was so named from Juno, one of the fabled goddesses of the Romans. It answers to the Jewish TAMMUZ, the tenth of their civil, and fourth of their sacred year.

**July, 1867.**

**MOON'S PHASES.**

NEW MOON.....	1st day, 6h, 17m, Evening
FIRST QUARTER.....	8th day, 2h, 0m, Evening
FULL MOON.....	16th day, 4h, 25m, Evening
LAST QUARTER.....	24th day, 11h, 1m, Morning
NEW MOON.....	31st day, 1h, 13m, Morning

Day of W.	Day of M.	Sun		G. app. time.		High Water at St. John's.		Moon's Rising, Memoranda, &c.
		rises at St. John's.	Sun sets at St. John's.	Sun's Declination.	Equa of time. add.	p. m.	a. m.	
M	1	4 12	7 55	N 23 9	3 27	7 30	7 5	Sir R. Peel died, 1850
T	2	4 13	7 55	23 5	3 38	8 23	7 55	
W	3	4 13	7 54	23 1	3 50	9 14	8 48	Am. Ind., 1776.
Th.	4	4 14	7 54	22 56	4 1	10 2	9 38	
F	5	4 15	7 54	22 50	4 12	10 51	10 27	23—Prince Wales arrived at St. John's, 1860.
S	6	4 15	7 53	22 45	4 22	11 39	11 14	
Su.	7	4 16	7 53	22 39	4 32	0 3		27—Second Atlantic Cable laid, 1866.
M	8	4 17	7 53	22 32	4 42	0 52	0 28	
T	9	4 18	7 52	22 25	4 51	1 47	1 19	25—St. James.
W	10	4 19	7 51	22 18	4 59	2 51	2 18	
Th.	11	4 19	7 51	22 10	5 8	3 54	3 22	St. Swithin.
F	12	4 21	7 50	22 2	5 16	5 0	4 26	
S	13	4 21	7 50	21 54	5 23	6 2	5 33	Moon rises 42 min. past 7, evening.
Su.	14	4 22	7 49	21 45	5 30	6 49	6 27	
M	15	4 23	7 48	21 36	5 37	7 32	7 9	Moon rises 45 min. past 8, evening.
T	16	4 24	7 47	21 27	5 43	8 9	7 51	
W	17	4 25	7 46	21 17	5 48	8 45	8 28	Moon rises 44 min. past 9, evening.
Th.	18	4 26	7 45	21 6	5 53	9 18	9 1	
F	19	4 27	7 44	20 56	5 58	9 51	9 34	Moon rises 40 min. past 10, evening.
S	20	4 28	7 43	20 45	6 2	10 26	10 9	
Su.	21	4 29	7 42	20 34	6 5	11 2	10 44	Moon rises 51 min. past 11, evening.
M	22	4 30	7 41	20 22	6 8	11 40	11 21	
T	23	4 32	7 40	20 10	6 10	0 2		Moon rises 19 min. past 0, morning.
W	24	4 33	7 39	19 58	6 12	0 49	0 24	
Th.	25	4 34	7 38	19 45	6 13	1 44	1 14	Moon rises 0 min. past 2, morning.
F	26	4 35	7 37	19 32	6 14	2 53	2 17	
S	27	4 36	7 36	19 19	6 14	4 5	3 29	Ig. Loyola died, 1556
Su.	28	4 37	7 35	19 5	6 13	5 20	4 43	
M	29	4 38	7 34	18 51	6 12	6 24	5 53	
T	30	4 39	7 32	18 37	6 10	7 21	6 54	
W	31	4 41	7 31	N 18 22	6 8	8 14	7 48	

**JULY.**—July (Latin, *Julius*), was originally called Quintilus, being the fifth month of the Roman calendar. Marc Antony designated it Julius, in honor of Caius Julius Cæsar, dictator of Rome, who was born in it, and who reformed the calendar. It answers to AB, the eleventh month of the Jewish civil year, and the fifth of their sacred year.

**August, 1867.**

MOON'S PHASES.

FIRST QUARTER..... 7th day, 3h. 38m, Morning  
 FULL MOON..... 15th day, 7h, 6m, Morning  
 LAST QUARTER..... 22d day, 5h, 51m, Evening  
 NEW MOON..... 29th day, 9h, 34m, Morning

Day of W.	M.	Sun rises	Sun sets	G. app. time.		High Water at St. John's	Moon's Rising, Memoranda, &c.
				Sun's Declination.	Equa of time. add.		
Th.	1	4 42	7 29	N 18 7	6 5	9 1 8 38	Slavery abol. in British dominions, 1834.
F	2	4 44	7 28	17 52	6 1	9 46 9 24	
S	3	4 45	7 27	17 37	5 57	10 29 10 8	[Cable laid, 1858. First Atlantic Tel. 26—Birth Prince Consort, 1819.
Su.	4	4 46	7 25	17 21	5 22	11 10 10 50	
M	5	4 48	7 24	17 5	5 47	11 55 11 31	
T	6	4 49	7 22	16 49	5 41	0 16	
W	7	4 50	7 21	16 32	5 34	1 3 0 41	
Th.	8	4 51	7 19	16 15	5 27	1 57 1 28	
F	9	4 53	7 18	15 58	5 19	3 6 2 30	
S	10	4 54	7 16	15 41	5 11	4 17 3 41	
Su.	11	4 55	7 15	15 23	5 2	5 25 4 55	
M	12	4 57	7 13	15 5	4 52	6 25 6 0	
T	13	4 58	7 11	14 47	4 42	7 8 6 48	Moon rises 12 min. past 6, evening.
W	14	4 59	7 9	14 29	4 31	7 49 7 29	Moon rises 19 min. past 7, evening.
Th.	15	5 1	7 8	14 10	4 20	8 25 8 9	Moon rises 15 min. past 8, evening.
F	16	5 2	7 6	13 52	4 8	8 56 8 40	Moon rises 13 min. past 9, evening.
S	17	5 3	7 4	13 33	3 56	9 30 9 14	Moon rises 19 min. past 10 evening.
Su.	18	5 5	7 3	13 13	3 43	10 3 9 46	Moon rises 49 min. past 11, evening.
M	19	5 6	7 1	12 54	3 30	10 38 10 20	Moon rises 45 min. past 0, morning.
T	20	5 7	6 59	12 34	3 16	11 17 10 58	Moon rises 0 min. past 3, morning.
W	21	5 9	6 57	12 14	3 2	11 57 11 35	21—Foundation Stone Wes. Church laid, 1856
Th.	22	5 10	6 55	11 54	2 47	0 20	
F	23	5 11	6 54	11 34	2 32	1 15 0 44	
S	24	5 13	6 52	11 14	2 16	2 23 1 47	
Su.	25	5 14	6 50	10 53	2 0	3 46 3 4	
M	26	5 15	6 48	10 32	1 44	5 7 4 26	
T	27	5 17	6 46	10 12	1 27	6 14 5 42	
W	28	5 18	6 44	9 50	1 10	7 12 6 43	
Th.	29	5 19	6 42	9 29	0 53	7 58 7 36	
F	30	5 21	6 40	9 8	0 35	8 43 8 23	
S	31	5 22	6 38	N 8 46	0 17	9 25 9 3	

AUGUST—August was originally called by the Romans *Sextilis*, or the sixth month, which was afterwards, by the æneæ changed to *Augustus*, in honor of the Emperor. It corresponds to the Jewish *ELUL* (Neh. vi. 15), their twelfth civil, or sixth sacred month.

FIRST FULL LAST NEW

Day of W. Day of M.

Su. 1  
 M. 2  
 T. 3  
 W. 4  
 Th. 5  
 F. 6  
 S. 7  
 Su. 8  
 M. 9  
 T. 10  
 W. 11  
 Th. 12  
 F. 13  
 S. 14  
 Su. 15  
 M. 16  
 T. 17  
 W. 18  
 Th. 19  
 F. 20  
 S. 21  
 Su. 22  
 M. 23  
 T. 24  
 W. 25  
 Th. 26  
 F. 27  
 S. 28  
 Su. 29  
 M. 30

SEPTEMBER  
 enth month  
*tema*, sign  
 signifies  
 month.

September, 1867.

MOON'S PHASES.

FIRST QUARTER..... 5th day, 8h, 0m, Evening  
 FULL MOON..... 13th day, 9h, 2m, Evening  
 LAST QUARTER..... 20th day, 11h, 38m, Evening  
 NEW MOON..... 27th day, 8h, 11m, Evening

Day of W.	Day of M.	Sun		G. app. time.		High		Moon's Rising, Me- moranda, &c.
		rises at St. John's.	sets at St. John's.	Sun's Decli- nation.	Equa. of time. subt.	Water at St. John's.	Water at St. John's.	
		h. m.	h. m.	o	m. s.	p. m.	a. m.	
Su.	1	5 23	6 36	N 8 25	0 2	9 45	9 28	
M	2	5 25	6 35	8 3	0 20	10 24	10 6	Atlantic Cable of 1865
T	3	5 26	6 33	7 41	0 39	11 2	10 43	grapled and secured
W	4	5 27	6 31	7 19	0 59	11 39	11 20 8	— Great Eastern ar.
Th.	5	5 29	6 28	6 57	1 18	0 2		at Heart's Content
F	6	5 30	6 26	6 34	1 38	0 41	0 21	with 1865 Cable.
S	7	5 31	6 24	6 12	1 58	1 37	1 6	21 — Protestant Ca-
Su.	8	5 33	6 23	5 49	2 19	2 48	2 9	thedral cons. 1850.
M	9	5 34	6 21	5 27	2 39	4 8	3 28	Catholic Cathedral
T	10	5 35	6 18	5 4	2 59	5 24	4 48	cons. 1855.
W	11	5 37	6 16	4 41	3 21	6 21	5 55	
Th.	12	5 38	6 14	4 18	3 42	7 3	6 42	
F	13	5 39	6 12	3 55	4 3	7 40	7 22	Moon rises 18 min.
S	14	5 41	6 10	3 32	4 24	8 14	7 56	past 6, evening.
Su.	15	5 42	6 8	3 9	4 45	8 45	8 29	Moon rises 15 min.
M	16	5 43	6 6	2 46	5 6	9 20	9 4	past 7, evening.
T	17	5 45	6 4	2 23	5 27	9 57	9 38	Moon rises 21 min.
W	18	5 46	6 2	2 0	5 49	10 33	10 14	past 8, evening.
Th.	19	5 47	6 0	1 36	6 10	11 12	10 52	Moon rises 48 min.
F	20	5 49	5 58	1 13	6 31	11 56	11 34	past 9, evening.
S	21	5 50	5 56	0 50	6 52	0 24		Moon rises 38 min.
Su.	22	5 51	5 54	0 26	7 13	1 28	0 53	past 11, evening.
M	23	5 52	5 53	N 0 3	7 34	2 52	2 8	Moon rises 49 min.
T	24	5 54	5 50	S 0 20	7 54	4 19	3 36	past 0, morning.
W	25	5 56	5 48	0 44	8 15	5 34	5 1	Moon rises 7 min.
Th.	26	5 57	5 46	1 7	8 35	6 33	6 4	past 3, morning.
F	27	5 58	5 44	1 31	8 56	7 22	6 58	
S	28	6 0	5 42	1 54	9 16	8 3	7 42	
Su.	29	6 1	5 40	2 17	9 35	8 41	8 22	St. Michael.
M	30	6 2	5 38	S 2 41	9 55	9 20	9 1	

SEPTEMBER—September, now the ninth, was anciently the seventh month, as is indicated by its name, which is derived from *septema*, signifying "seven;" *ember*, or *imber*, is from the Latin, and signifies "showers," as frequently the rainy season begins this month.

**October, 1867.**

**MOON'S PHASES.**

FIRST QUARTER.....	5th day,	2h, 47m,	Evening
FULL MOON.....	13th day,	9h, 53m,	Morning
LAST QUARTER.....	20th day,	5h, 46m,	Morning
NEW MOON.....	27th day,	9h, 32m,	Morning

Day of W.	Day of M.	Sun		G. app. time.		High		Moon's Rising, Me- moranda, &c.	
		rises	Sun sets at St. John's.	Sun's Declination.	Equa. of time. subt.	Water at St. John's.			
		h.	m.	h.	m.	o	m. s.	p. m a. m.	
T	1	6	4	5	36	S 3	4 10 14	9 54 9 37	First Steamer on River Hudson, 1807.
W	2	6	5	5	33	3	27 10 33	10 29 10 12	
Th.	3	6	6	5	31	3	51 10 52	11 4 10 47	
F	4	6	8	5	29	4	14 11 10	11 41 11 23	
S	5	6	9	5	27	4	37 11 28	0 4	
Su.	6	6	11	5	25	5	0 11 46	0 53 0 26	
M	7	6	12	5	23	5	23 12 3	1 59 1 25	1st Telegraphic Message from Cape Breton, 1856.
T	8	6	14	5	22	5	46 12 20	3 22 2 41	
W	9	6	15	5	20	6	9 12 37	4 42 4 3	
Th.	10	6	17	5	18	6	32 12 53	5 43 5 14	
F	11	6	18	5	16	6	55 13 8	6 28 6 8	Steam. com. estab. in Con. Bay, 1852.
S	12	6	20	5	14	7	17 13 24	7 7 6 48	
Su.	13	6	21	5	12	7	40 13 38	7 41 7 25	Moon rises 45 min. past 5, evening.
M	14	6	22	5	10	8	3 13 52	8 16 8 0	
T	15	6	24	5	8	8	25 14 6	8 54 8 34	Moon rises 2 min. past 7, evening.
W	16	6	25	5	6	8	47 14 19	9 33 9 14	
Th.	17	6	27	5	4	9	9 14 32	10 12 9 53	Moon rises 33 min. past 8, evening.
F	18	6	28	5	2	9	31 14 43	10 55 10 33	
S	19	6	30	5	0	9	53 14 56	11 45 11 19	Moon rises 37 min. past 10, evening.
Su.	20	6	31	4	58	10	15 15 5	0 13	
M	21	6	33	4	57	10	36 15 15	1 17 0 42	
T	22	6	34	4	55	10	58 15 24	2 42 1 57	Moon rises 55 min. past 0, morning.
W	23	6	36	4	53	11	19 15 33	4 7 3 26	
Th.	24	6	37	4	51	11	40 15 41	5 20 4 46	Moon rises 16 min. past 3, morning.
F	25	6	39	4	50	12	1 15 48	6 14 5 48	
S	26	6	40	4	48	12	21 15 54	7 1 6 39	Moon rises 30 min. past 5, morning.
Su.	27	6	42	4	46	12	42 16 0	7 41 7 23	
M	28	6	43	4	45	13	2 16 5	8 17 8 0	
T	29	6	45	4	43	13	22 16 9	8 53 8 35	
W	30	6	46	4	41	13	42 16 13	9 28 9 11	
Th.	31	6	48	4	40	S 14	2 16 15	10 1 9 45	Hallow Eve.

OCTOBER.—October derives its name from the Latin word *octo*, "eight," indicating the place it held in the Roman calendar, and *imber*, or "shower." To the Jews it was known as BUL, signifying decay, as in the fall of the leaf (1 Kings, vi. 38), or MARCHESVAN, as it was called after the captivity.

**November, 1867.**

**MOON'S PHASES.**

FIRST QUARTER ..... 4th day, 10h, 57m, Morning  
 FULL MOON..... 11th day, 9h, 38m, Morning  
 LAST QUARTER..... 18th day, 1h, 35m, Evening  
 NEW MOON..... 26th day, 1h, 40m, Morning

Day of W.	Day of M.	Sun		G. app. time.		High		Moon's Rising, Me- moranda, &c.
		rises at St. John's.	Sun sets at St. John's.	Sun's Decli- nation.	Equa of time. subt.	Water at St. John's.		
		h. m.	h. m.	o	m. s.	p. m.	a. m.	
F	1	6 49	4 38	S 14 21	16 17	10 35	10 18	All Saints.
S	2	6 51	4 36	14 40	16 18	11 12	10 54	
Su.	3	6 53	4 35	14 59	16 19	11 53	11 31	Free St. Andrew's Church opened, 1850
M	4	6 54	4 33	15 18	16 18	0 16		
T	5	6 56	4 32	15 37	16 17	1 13	0 42	
W	6	6 57	4 30	15 55	16 15	2 27	1 48	29—St. John's Wes- leyan Church op- ened, 1857.
Th.	7	6 59	4 29	16 13	16 12	3 44	3 7	
F	8	7 0	4 27	16 30	16 8	4 56	4 21	
S	9	7 2	4 26	16 48	16 4	5 49	5 24	
Su.	10	7 3	4 25	17 5	15 58	6 32	6 12	Nfld. and New York Telegraph opened, 1856.
M	11	7 5	4 24	17 22	15 52	7 13	6 53	
T	12	7 6	4 22	17 38	15 45	7 52	7 32	
W	13	7 8	4 21	17 55	15 37	8 31	8 11	Moon rises 24 min. past 6, evening.
Th.	14	7 10	4 20	18 10	15 28	9 14	8 53	Moon rises 25 min. past 8, evening.
F	15	7 11	4 19	18 26	15 19	9 58	9 37	Moon rises 45 min. past 10, evening.
S	16	7 12	4 18	18 41	15 8	10 44	10 21	
Su.	17	7 14	4 16	18 56	14 57	11 37	11 10	
M	18	7 15	4 15	19 11	14 45	0 5		
T	19	7 17	4 14	19 25	14 31	1 8	0 35	
W	20	7 18	4 13	19 39	14 18	2 22	1 42	Moon rises 5 min. past 1, morning.
Th.	21	7 20	4 12	19 52	14 3	3 42	3 4	Moon rises 18 min. past 3, morning.
F	22	7 21	4 11	20 6	13 47	4 52	4 18	
S	23	7 23	4 11	20 18	13 31	5 51	5 25	
Su.	24	7 24	4 10	20 31	13 14	6 38	6 16	
M	25	7 26	4 9	20 43	12 56	7 21	7 0	
T	26	7 27	4 8	20 55	12 37	8 0	7 41	
W	27	7 28	4 7	21 6	12 18	8 35	8 17	
Th.	28	7 30	4 7	21 17	11 57	9 10	8 52	
F	29	7 31	4 6	21 27	11 37	9 42	9 26	
S	30	7 32	4 6	S 21 37	11 15	10 15	9 58	St. Andrew

NOVEMBER.—November is so named from the Latin *novem* "nine," it being the ninth month of the Roman calendar. It corresponds to the Jewish *CHISLEV* (Neh. i. 1), which signifies *chilled*, the third month of their civil, and ninth of their sacred year.



**December, 1867.**

**MOON'S PHASES.**

FIRST QUARTER..... 4th day, 6h, 50m, Morning  
 FULL MOON..... 11th day, 8h, 39m, Morning  
 LAST QUARTER..... 18th day, 0h, 3m, Morning  
 NEW MOON ..... 25th day, 8h, 8m, Evening

Day of W.	Day of M.	Sun		G. app. time.		High		Moon's Rising, Me- moranda, &c.
		rises	Sun sets	Sun's Decli- nation.	Equa of time.	Water at St. John's.		
		at St. John's.						
SU.	1	7 33	4 5	S 21 47	10 53	10 51	10 33	
M	2	7 35	4 5	21 56	10 30	11 30	11 10	
T	3	7 36	4 4	22 5	10 7	11 50	11 0	
W	4	7 37	4 4	22 13	9 43	0 37	0 12	St. Andrew's Kirk opened, 1843.
Th.	5	7 38	4 3	22 21	9 18	1 32	1 3	
F	6	7 39	4 3	22 29	8 53	2 43	2 7	
S	7	7 40	4 3	22 36	8 27	3 55	3 19	
SU.	8	7 42	4 3	22 43	8 1	4 56	4 25	Sons of Tem. organi- zed in Nfld., 1850.
M	9	7 43	4 3	22 49	7 35	5 53	5 26	
T	10	7 44	4 3	22 55	7 8	6 40	6 17	
W	11	7 44	4 3	23 0	6 40	7 27	7 5	
Th.	12	7 45	4 3	23 5	6 12	8 15	7 51	Moon rises 7 min.
F	13	7 46	4 3	23 9	5 44	9 1	8 37	past 6, evening.
S	14	7 47	4 3	23 13	5 16	9 50	9 25	Moon rises 30 min.
SU.	15	7 48	4 3	23 17	4 47	10 38	10 14	past 8, evening.
M	16	7 49	4 3	23 20	4 18	11 31	11 5	Moon rises 55 min.
T	17	7 49	4 4	23 22	3 49	11 56	11 56	past 10, evening.
W	18	7 50	4 4	23 24	3 19	0 50	0 23	Moon rises 2 min.
Th.	19	7 51	4 4	23 26	2 49	1 51	1 20	past 0, morning.
F	20	7 51	4 5	23 27	2 19	3 1	2 26	Moon rises 17 min.
S	21	7 52	4 5	23 27	1 50	4 12	3 36	past 2, morning.
SU.	22	7 52	4 6	23 28	1 19	5 17	4 47	Moon rises 26 min:
M	23	7 53	4 6	23 27	0 49	6 14	5 47	past 4, morning.
T	24	7 53	4 7	23 27	0 19	6 57	6 35	
W	25	7 53	4 7	23 25	0 11	7 40	7 21	CHRISTMAS DAY.
Th.	26	7 54	4 8	23 24	0 41	8 18	7 59	St. Stephen.
F	27	7 54	4 9	23 21	1 11	8 53	8 36	St. John.
S	28	7 54	4 9	23 19	1 40	9 27	9 11	Innocents' Day.
SU.	29	7 54	4 10	23 16	2 10	10 1	9 44	
M	30	7 55	4 11	23 12	2 39	10 33	10 16	
T	31	7 55	4 12	S23 8	3 8	11 9	10 50	

Equation of time to be subtracted from apparent time to the 24 h,  
and to be added the remainder of the month.

DECEMBER.—December derives its name from the Latin *decem*,  
"ten;" as, in the Roman year, instituted by Romulus, beginning  
with March, it was the tenth month.

AL  
Unit  
and  
King  
the 2  
the t  
1837  
the  
Palac  
ness  
Princ  
14th  
Vic  
1840;  
High  
Alb  
Nov.  
exand  
Alio  
at Ost  
of Her  
Alf  
Hel  
July,  
Holete  
Lou  
Art  
Leo  
Bea



### The Royal Family.

**ALEXANDRINA VICTORIA**, by the Grace of God, of the United Kingdom of Great Britain and Ireland, Queen, only daughter and heir of the late Prince Edward, Duke of Kent, fourth son of King George III. Her Majesty was born at Kensington Palace, on the 24th May 1819; baptized on the 24th of June 1819; ascended the throne on the demise of her uncle, King William IV., 20th June 1837; proclaimed 21st June 1837; and crowned at Westminster, on the 28th June 1838. Her Majesty was married at St. James's Palace, on the 10th Feb. 1840, to her cousin, his late Royal Highness Francis-Albert-Augustus-Charles-Emmanuel, Duke of Saxe, Prince of Coburg and Gotha, who died at Windsor Castle, on the 14th Dec. 1861. Children :—

Victoria-Adelaide-Mary-Louisa, *Princess Royal*, born 21st Nov. 1840; married 25th Jan. 1858, at the Chapel Royal, to His Royal Highness Prince Frederick-William-Nicholas-Charles of Prussia.

Albert-Edward, *Prince of Wales and Earl of Dublin*, born 9th Nov. 1841; married 10th March 1863, at Windsor, to Princess Alexandra, daughter of Prince Christian, of Denmark.

Alice-Maud-Mary, born 25th April 1843; married 1st July 1862; at Osborne, to His Royal Highness Prince Frederick-William-Louis of Hesse-Darmstadt.

Alfred-Earnest-Albert, born 6th August 1844.

Helena-Augusta-Victoria, born 25th May 1846; married 5th July, 1866, to His Royal Highness Prince Christian, of Schleswig Holstein Sonderburg Augustenburg.

Louisa-Caroline-Alberta, born 18th March 1848.

Arthur-William-Patrik-Albert, born 1st May 1850.

Leopold-George-Duncan-Albert, born 7th April 1853.

Beatrice-Mary-Victoria-Feodore, born 14th April 1857.

## Her Majesty's Chief Officers of State.

### THE CABINET.

- First Lord of Treasury*—The Earl of Derby, K.G.  
*Lord High Chancellor*—Lord Chelmsford.  
*Lord President of the Council*—Duke of Buckingham.  
*Lord Privy Seal*—Earl of Malmesbury, G. C. B.  
*Chancellor of the Exchequer*—Right Hon. B. Disraeli.  
*Secretary of State for Home Department*—Right Hon. S. H. Walpole.  
*Secretary of State for Foreign Affairs*—Lord Stanley.  
*Secretary of State for the Colonies*—Earl of Carnarvon:  
*Secretary of State for War*—General Peel.  
*Secretary of State for India*—Lord Cranborne.  
*First Lord of the Admiralty*—Right Hon. Sir John Pakington, G. C. B.  
*President of the Board of Trade*—Sir S. Northcote.  
*Chancellor of the Duchy of Lancaster*—Earl of Devon.  
*President of the Poor Law Board*—Mr. Gathorne Hardy.  
*Chief Commissioner of Works*—Lord J. Manners.

### NOT OF THE CABINET.

- Post Master General*—Duke of Montrose.  
*Under Secretary for Home Department*—Lord Belmore.  
*Under Secretary for Foreign Affairs*—Mr. E. Egerton.  
*Under Secretary for Colonies*—Mr. Adderley.  
*Under Secretary for War*—Lord Longford.  
*Under Secretary for India*—Sir J. Fergusson.  
*Attorney-General*—Sir H. Cairns.  
*Solicitor-General*—Mr. Bovil.  
*Judge Advocate General*—Mr. Mowbray.

### IRELAND.

- Lord Lieutenant*—Marquis of Abercorn.  
*Chief Secretary*—Lord Naas.  
*Lord Chancellor*—Mr. Brewster.  
*Attorney-General*—Mr. George.  
*Solicitor-General*—

### SCOTLAND.

- Lord Advocate*—Mr. Patton.  
*Solicitor-General*—Mr. S. Gordon.

JA

ED  
MaTh  
Th  
Th  
Th  
Th  
Th  
ThTh  
Th  
Th  
Th  
Th  
Th  
Th  
Th  
Th  
Th  
ThM  
ing  
tive  
U  
D  
A  
Am



## COLONY OF NEWFOUNDLAND.

*Governor, Commander-in-Chief and Vice Admiral,*

**HIS EXCELLENCY ANTHONY MUSGRAVE, ESQUIRE.**

*Private Secretary,*

**JAMES SHERIFF MUSGRAVE, Esquire.**

*Colonial Aides de-Camp.*

**EDWARD L. JARVIS, Esquire, and**

**Major CHARLES MESHAM, D. A. G. Volunteers.**

---

### The Executive Council.

The Honorable Laurence O'Brien—*President.*  
 The Honorable Frederick B. T. Carter, *Premier.*  
 The Honorable Nicholas Stabb.  
 The Honorable John Bemister.  
 The Honorable Ambrose Shea.  
 The Honorable John Kent.  
 The Honorable John Hayward.  
*Clerk of the Council*—Hon. John Bemister.

---

### The Legislative Council.

The Honorable Laurence O'Brien, *President.*  
 The Honorable Edward Morris,  
 The Honorable Nicholas Stabb,  
 The Honorable Robert J. Pinsent, Q. C.  
 The Honorable Robert Kent,  
 The Honorable James S. Clift,  
 The Honorable Richard O'Dwyer,  
 The Honorable Edward White,  
 The Honorable Peter G. Tessier,  
 The Honorable James Cormack,  
 The Honorable James O. Fraser,  
 The Honorable John Winter.  
 The Honorable Edward D. Shea.

*Master-in-Chancery and Clerk*—Hon. George H. Emerson, holding by her Majesty's patent, the rank and precedence of an Executive Councillor.

*Usher of the Black Rod*—William F. Rennie.

*Door Keeper*—James Walsh.

*Assistant Door Keepers and Messengers*—James Corcoran and Ambrose Ronayne.

## The House of Assembly.

[Elected November, 1865.]

*Speaker*—WILLIAM VALLANCE WHITEWAY, Esquire.

*District of St. John's East*—John Kavanagh, Esquire, Hon. John Kent, and Robert John Parsons, Esquire.

*District of St. John's West*—Thomas Talbot, Henry Renouf, and Peter Brennan, Esquires.

*District of Harbor Grace*—Hon. John Hayward, and William S. Green, Esquire.

*District of Carbonear*—John Rorke, Esquire.

*District of Harbor Maine*—George J. Hogsett, and Charles Farey, Esquires.

*District of Port-de-Grave*—John Leamon, Esquire.

*District of Bay-de-Verds*—Hon. John Bemister.

*District of Trinity*—Stephen Rendell, Frederick J. Wyatt, and Esquires.

*District of Bonavista*—John H. Warren, John T. Oakley, and John T. Burton, Esquires.

*District of Twillingate and Fogo*—Thomas Knight, and William V. Whiteway, Esquires.

*District of Ferryland*—Thomas Glen, and Michael Kearney, Esquires.

*District of Placentia and St. Mary's*—Hon. Ambrose Shea, Pierce M. Barron, and Thomas O'Rielly, Esquires.

*District of Burin*.—Edward Evans, Esquire, and Hon. Frederick B. T. Carter.

*District of Fortune Bay*—Thomas R. Bennett, Esquire.

*District of Burgeo and La Poile*.—Daniel Woodley Frowse, Esq.

*Clerk*—John Stuart.

*Clerk Assistant*—Richard Holden.

*Solicitor*—Thomas J. Kough.

*Sergeant at Arms*—Hugh J. Furneaux.

*Doorkeeper*—William Dalton.

*Messengers*—John Kennedy and Peter Higgins.

*Under Doorkeepers*—Philip Brown and Peter Doyle.

*Fireman*—John Higgins.

*Librarian*—Mrs. Feehan.

## Public Officers (Departmental.)

*Attorney General*—Hon. Frederick B. T. Carter.

*Colonial Secretary*—Hon. John Bemister.

*Receiver General*—Hon. John Kent.

*Solicitor General*—Hon. John Hayward.

*Surveyor General*—John H. Warren, Esquire.

*Financial Secretary*—Hon. Edward D. Shea.

---

### Colonial Secretary's Office.

Colonial Secretary—Hon. John Bemister.  
 First Clerk—Joseph Crowdy.  
 Second Clerk—John W. Withers.  
 Office Keeper and Messenger—James Dunphy.

---

### Revenue Department.

#### BOARD OF REVENUE.

President—Hon. John Kent, Receiver General; Hon. Laurence O'Brien, Hon. Nicholas Stabb, Hon. R. Kent, Ewen Stabb, Esq., Robert Grieve, Esq.

#### REVENUE ESTABLISHMENT.

Receiver General—Hon. J. Kent. Assistant Collector—John Canning, Esq. Landing and Tide Surveyor—James S. Hayward. Landing Waiters—Edward L. Moore, Thomas E. Gaden. First Clerk and Warehouse Keeper—William D. Outney. Second Clerk—James Winter. Third Clerk—William Gill. Fourth Clerk and Locker—William Reddin. Lockers—Richard Mesgher and David Connors.

Authorised Broker—Joseph R. Mullings.

#### OUTPORT SUB-COLLECTORS.

Fogo, John G. Lucas. Greenspond, William Lang. Trinity, Robert Bayly. Carbonear, John McCarthy. Harbor Grace, Henry T. Moore; Clerk and Landing Waiter, John F. Burrows. Brigus, John C. Nuttall. Burin, Thomas Winter. Lamaline, Henry Bennig. Harbor Breton, Thomas Birkett. Gaultois, Richard Bradshaw. LaPoile, Thomas Read. Twillingate, Joseph J. Pearce. Oderin, Richard McGrath.

#### PREVENTIVE OFFICERS.

Green Bay (North Side) Patrick Power. Bonavista and Catalina, John Miffen. Bay Bulls, Martin Williams. Ferryland, Luke Brown. St. Mary's, James Murphy. Little Placentia, Thomas Freeman. Channel (Port-aux-Basque), John Hooper. St. Lawrence, Hugh Vavasar. English Harbor, (Fortune Bay,) Albert Stirling. Bay Roberts, George W. Hierlihy. Pushthrough, (Fortune Bay,) Henry Camp. Hants Harbor, James L. Mews. Burgeo, Francis A. Parsons. Great Placentia, William G. Bradshaw. Grand Bank and Fortune (Fortune Bay) Joseph J. Haddock.

#### CUSTOMS DEPARTMENT.

Comptroller of Customs and Registrar of Shipping for Newfoundland and its Dependencies—Hon. J. Kent. Surveyors of Shipping—Edward L. Moore, St. John's. Henry T. Moore, Harbor Grace. Robert Bayly, Trinity. Albert Stirling, English Harbor. David Candow, jr., Cape Bonavista to Salvage. William Lang, Salvage to Cape Freels.

## TREASURY DEPARTMENT.

Receiver General—Hon. J. Kent. Clerk—Geo. F. Hayward.

LABRADOR—*Collection of Duties under Act 26 Vic., Cap 1 and 2.*

Collector. James Winter. (Sub-Collectors appointed by Collector, subject to control of Governor in Council, under Act 26 Vic., Cap. 2, Sec. 10.)

Superintendent of Mercantile Marine—Robert Carter.

## Surveyor General's Department.

Surveyor General—John H. Warren, Esq.; Deputy Surveyor—~~Edward M. J. Dolan, C.E.~~ ; Chainman—Richard Ryan.

*H. Warren*

## DEPUTY SURVEYORS IN OUTPORTS.

*Northern District*—William Swansborough, Carbonear. Patrick Brien, Brigus. Benjamin Sweetland, Trinity. ———, Greenspond. ———, King's Cove. Charles E. Thompson, Bonavista. G. W. R. Hierihy, Bay Roberts. William Christian, Bay de Verds. James Peyton and Thomas Peyton, Twillingate. Robert Strathie, Bonavista West. George Carter, Harbor Main.

*Southern District*—Thomas Mockler, Bay Bulls. Michael Kelly, Cape Broyle. John W. English, St. Mary's and Placentia. Henry Camp and Albert Stirling, Fortune Bay. James Harney, Burin. Josiah J. Blackburn, Grand Bank. Duncan J. Byles, Placentia.

## Financial Secretary's Office.

Financial Secretary—Hon. Edward D. Shea.

Clerk—Richard Howley.

## Board of Works Department,

Having the management and superintendence of Government House, Colonial Building, Court Houses, Gaols, Custom Houses, Hospitals, Lunatic Asylum, and all other Buildings and Property belonging to the Colony; Light Houses, Buoys, and Beacons erected or to be erected within the Colony and its dependencies; supervision of Commissioners of Roads, Highways, Bridges, &c., &c.

## BOARD OF WORKS.

Chairman—~~John T. Nevill~~, Esquire; Hon. J. Bemister, John Kavanagh, William Boyd, Thomas S. Dwyer.

*Robert Alsop*

Secretary—John Stuart. Superintendent of Public Works and Buildings—John T. Nevill. Road Surveyors and Inspectors—Thomas Byrne and John Maher.

## OUTPORT BOARDS OF ROAD COMMISSIONERS.

*Brigus to Port de Grave, both places inclusive*—John Leamon, James Tarahin, Rev. E. O'Keefe, John Wilcox, Philip Bennett, Thomas Butler, John Bartlett, James N. Leamon, James Wilcox.

*Port de Grave, Northern side of Northern Gut Bridge*—Doctor Brown, Thomas Butler, — Kenny, John Butler, (Sand,) John M. Maddock, John Andrews, Isaac Richards, Thomas Corbin.

*Indian Pond, exclusive, to Turk's Gut, inclusive*—John Kennedy, jr., (Holyrood) Rev. K. Walsh, Charles Furey, Richard Walsh (Harbor Main) John M'Gill, (Salmon Cove) James Wade, (Cat's Cove) James Hearn, (Colliers.).

*Indian Pond to Topsail, both places inclusive*—George Carter, Patrick Daily, John Nugent, John Haddon, William Tilly.

*Bay Roberts*—W. S. Green, Richard Cormack, Isaac Bartlett, John McStravic Robert Daw.

*Upper Island Cove, Bishop's Cove, and Bryant's Cove*—James Crane, Joseph Drover, jr., James Drover, (Island Cove) John Barrett, Israel Gosse, (Bishop's Cove) Thomas Stephenson, (Bryant's Cove.)

*Carbonear*—John Rorke, John McCarthy, Michael Bolger, Michael Gould, John F. Apsey, Nicholas Nicholle, Benjamin T. Gould, Moses Wishear.

*Bay-de-Verde (Upper Division) from Fresh Water to Northern Bay, exclusive*—Rev. John Waterhouse, Wm. Joice, Wm. Butt, Maurice Walsh.

*Bay-de-Verde (Lower Division) from Northern Bay (inclusive) to Grates Cove*—John Lewis, Rev. Bernard Duffy, Rev. Oliver Rouse, and Josiah Garland.

*Trinity (North Side) to Ragged Harbor*—Benjamin Sweetland, Robert Bayly, Alexander W. Bremner, Gilbert H. Cole, Patrick Murphy.

*Trinity (South Side) from Grates Cove to Hant's Harbor*—James L. Mews, John Sheehan, Thomas Cooper, Jabez Tilley, William Meadows, William March.

*New Harbor*—Charles Newhook, William Miller, Joseph Pretty, Edgar March, — Smith, (Chance Cove.)

*Hant's Harbor to the Head of the Bay*—Rev. George Gardner, Reuben Bemister, Michael Howley, William Sooley, and Elias Warren.

*Ragged Harbor to Bird Island*—Alexander Bremner, William Ashford, William Walsh, Robert Tilley, John Cameron, John Jaynes, Benjamin Snelgrove, James Murphy.

*Bonavista*—John G. Skelton, James Smit, Peter Ward, John Lawrence, Patrick Kough, William Brown, David Candow.

*King's Cove.*—Michael Murphy, George Brown, James Brown, sr.

*Keels and Tickle Cove*—James Eagan, (Keels) Andrew Mulleney, William Penny, John Skiffington.



*Salvage*—E. Kelligrew, Thomas Oldford, Henry Wills, (Salvage) James Bendon, James Pike, (Flat Island)

*Greenspond*—George Skelton, M.D., James L. Noonan, John T. Oakley, William Lang, Michael Curran, William Tough, (Pinchard's Island,) and Darius Blandford.

*Twillingate*—John Peyton, Joseph J. Pearce, Charles Edmond, Joseph Minty, Thomas Manuel.

*Fogo*—Hay Findlater, M.D., Richard Power, Thomas Humphrey, John Banks, and Walter Williams.

*Tilton Harbor*—Rev. James Brown, William Burke, John Brine, John Dwyer, William Greene.

*Moreton's Harbor and Tizzard's Harbor*.—William Osmond, John Forward, (Tizzard's Harbor,) Henry Knight, John Taylor, John Cantwell, (Moreton's Harbor).

*Burnt Island, Exploits*—Edward Dowton, Thomas Butt, William Sevin, Andrew Pearce, Josiah Manuel, James Windsor.

*Fortune Bay*—James Hamilton, Michael Bryan, Michael Byrne, Matthias Glaveen, Patrick Carroll, William Carroll, (Indian Cove) James Lyver, (Waldron's Cove.)

*Jackett's Arm to Head of Green Bay*—John Knight, J. Campbell, John Rowsell, John Wills.

*Shoe Cove to Nipper's Harbor*.—James Gray, John Stark, William Noble, John Walshman.

*Leading Tickle*—James Alcock, Edward Butler, William Rowsell.

*Ferryland and Fermews*—Rev. James Murphy, Edmund Hanrahan, William Carter, (Ferryland) Richard Cashin, (Cape Broyle), William Johnston, (Renews.)

*Bay Bulls to the Goulds*—Martin Williams, Martin Driscoll, Thomas Mockler, Cornelius O'Brien, Dr. McKie, and Very Rev. P. Cleary.

*Placentia and St. Mary's*—Francis L. Bradshaw, Rev. Edward Condon, Thomas Freeman, and Thomas Keites.

*Sound Island (Placentia Bay)*—James Hollett, Philip Brown.

*St. Mary's*—James Murphy, John Walsh, John Whelan, John Grace, James Walsh, Patrick Walsh, James Whelan.

*Burin*—Francis Berteau, Owen Pine, George Bishop, Michael Gorman, Patrick Morris, John O'Neil, Thomas Winter.

*Lamaline*—Robert Bonnell, John Pitman, John Collins, George Cak\*, George But\*, George H. Evans.

*Grand Bank*—Edward Evans, Jonathan Snook, George Lake, William Burfitt, Dr. J. Haddock.

*Harbor Breton*—Samuel Howe, Clement Mallett, Thomas Birkett, Philip Hubert, James Hardy.

*BeKoram*—Rev. John Marshall, John Cluetz, John Grandy, Thomas Ross, John Rowhey.

*Garnish*—George T. R. Snelgrove, Samuel Banfield, Joseph Grandy, Thomas Grandy, Stephen Grandy.

*St. Lawrence*—Robert Pike, William Fitzpatrick, Richard Quirk, James Reeves.

*English Harbor*—T. R. Bennett, — Hall, — Fiander, T. Evans, Albert Stirling, William Burke.

*Gaultois*—Rev. E. Colley, John Lee, Richard Bradshaw, H. Shephard, William T. Gallop.

*Rose Blanche and Harbor LeCou*—Philip Sorsoliel, John Hanhan, Meshech Parsons, Thomas Ridout, *cr.*, George Thomas.

*Burgeo*—Rev. John Cunningham, William Anderson, Stephen Vatcher, Walter Ford, George Hunt, M.D., John Jordan.

*La Poile*—Thomas Read, Philip Clements, William Thomas, Frederic Cox, Philip Grouchy, Rev. G. S. Chamberlain, John Anderson.

*Channel (Port-aux-Basque)*—Rev. W. W. LeGallais, Rev. Isaac Howie, John Gilman, John Bragg, William Gilman, John G. Brook.

## GAOLS.

*St. John's (Penitentiary)*—Keeper, William M'Gill, (Acting); Turnkey, Samuel Shaw; Surgeon, Charles Crowdy, M.D.

*Harbor Grace*—Gaoler, David, Rogers; Surgeon, William Allan, M.D.

*Trinity*—Gaoler, Charles Granger.

*Ferryland*—Gaoler, Francis Geary.

*Placentia*—Gaoler, Samuel Collins.

*Burin*—Gaoler, John Murphy.

*Bonavista*—Gaoler, Michael Fennell.

*Twillingate and Fogo*—Gaoler, James Rice.

*Harbor Breton*—Gaoler, John Garvey.

*Brigus and Port-de-Grave*—Gaoler, Thomas Butler.

*Greenspond*—Gaoler, John Bridle.

## COURT HOUSES.

*St. John's*—Keeper, John R. Jeans.

*Harbor Grace*—Keeper, David Rogers.

*Ferryland*—Keeper, Francis Geary.

## ST. JOHN'S HOSPITAL.

Medical Attendant—Thomas McKen, M. D.; Matron—Miss Cowan; Keeper—John Prowse.

## ST. JOHN'S POOR HOUSE.

Medical Attendant—Thomas McKen, M.D.; Keeper—John Downey; Assistant Keeper— — — —.

## LUNATIC ASYLUM (ST. JOHN'S.)

Resident Physician—Henry H. Stabb, M.D.

## DISTRICT SURGEONS.

*St. John's* (Eastern Ward)—Charles Crowdy, M.D.; Charles H. Renouf, M.D. (Western Ward)—Frederick Bunting, M.D., James N. Fraser, M.D.

*Conception Bay*—William Allan, M.D.

## COLONIAL BUILDING AND GROUNDS.

Keeper—Mrs. Born.

## COMMISSIONERS FOR ERECTION OF PUBLIC WILARF.

*Catalina*—William Walsh, James Murphy, John Diamond, John Jeynes.

## COMMISSIONERS FOR ERECTION OF BREAKWATERS.

*Fortune*—George Lake, sr., Elias Major, John Lake, John Spence, sr., Thomas Rogers, sr., John Forsey, sr., and Edward Bennett.

*Grand Bank*—Robert Forsey, William Burfitt, Henry Hickman, Wilson Lovell, Henry Nicholle, George Tibbo, George Forsey.

*Twillingate*—John Peyton, John W. Owen, John M. Hurse.

*Great Burin*—Owen Pine, James Inkpen, and Henry Hollett.

## Light Houses.

*Fort Amherst Light at the entrance of St. John's*.—A Light was first established at this station in 1813; in 1850 a new House, Lantern and Apparatus were erected. The light burns at an elevation of 114 feet, is produced by a treble argand burner placed in the focus of an annular lens of the fourth order, and in favorable weather can be seen 16 nautical miles. When Cape Spear is enveloped in fog a heavy piece of ordnance is also discharged at this Fort every hour during day light, to assist vessels in making the harbor. It is situated in lat. 47.33.54 N., and long. 52.40.18 W. John Sheppard, Keeper; Austin Sheppard, Assistant.

*Cape Spear Light*.—This Light was first exhibited on the 1st September, 1835; it is produced by seven argand burners and silvered reflectors burning at an elevation of 264 feet—it revolves, shewing a bright Light, every minute, and in favourable weather can be seen 26 nautical miles. It is situated in 47.31.11 N. lat., and 52.36.59 W. longitude. James Cantwell, Keeper; Dennis Cantwell, Assistant.

*Harbor Grace Island Light*.—First exhibited on the 21st November, 1836; it is a fixed Light, has fifteen argand burners and reflectors, showing a steady bright light from N. to S. W. and by W. seaward, elevated above the level of the sea 151 feet, and can be seen in fair weather in rounding Cape St. Francis or crossing Conception Bay, on the intervening space between N. and S. W. and by W. 20 nau-

tic  
in l  
Ch  
C  
W.  
wh  
refl  
fav  
Lig  
Roc  
Ke  
C  
Gov  
ary  
thir  
abo  
in l  
be s  
Assi  
H  
Sep  
Har  
Gra  
that  
mile  
boun  
bear  
on t  
low  
lat.  
level  
naut.  
G  
Bay  
white  
favou  
nauti  
open  
with  
when  
the N  
steer  
Patri  
Ca  
to su  
roun  
above  
weath  
red a  
has b

tical miles; on the land side the light is more feeble. It is situated in lat. 47.42 45 N., and long. 53.8.15. Samuel Austin, Keeper; Charles Snow, Assistant.

*Cape Bonavista Light.*—Situated in lat. 48.41.56 N., long. 53 5.20 W.; is a Revolving Light, showing alternately every 90 seconds a white and red Light. It is produced by sixteen argand burners and reflectors, burns at an elevation above the sea of 150 feet, and in favorable weather can be seen 18 nautical miles. By keeping this Light open with Cape Largent, it will carry you clear of the Flower Rocks; first exhibited 11th September, 1843. Jeremiah White, Keeper; Nicholas White, Assistant.

*Cape Pine Light.*—This tower is of iron, built by the Imperial Government in 1849-50, and first put in requisition on the 1st January, 1851. It is a fixed White Light, and shews a brisk flash every thirty seconds—has 12 argand burners and reflectors—elevated above the level of the sea 314 feet—situated in lat. 46 37.4 N., and in long. 53 31 45 W. In a favourable state of the atmosphere it can be seen 26 nautical miles. ———— Keeper; Thomas Doran, Assistant.

*Harbor Grace Beach Beacon and Light.*—First exhibited 11th September 1850; stands on the Point of Beach at the entrance of Harbor Grace. It is a double Light, as a distinction from Harbor Grace Island Light, one being placed above the other, preserving that appearance for six miles; exceeding this distance up to ten miles the two lights appear blended into one. In sailing into Harbour Grace with a fair or leading wind, bring the Beach Beacon to bear W. or W. by S., and by keeping the Light or building a little on the starboard bow it will carry you clear of the Bar, on which at low water there is not more than 8 feet of water. It is situated in lat. 47 41.28 N., and in long. 53 12.33 W.; elevation above the sea level 40 feet; in clear weather it may be seen at a distance of 11 nautical miles. George Brown, Keeper.

*Green Island Light, at the entrance of Catalina Harbor, Trinity Bay.*—Situated in lat. 48 30 16 N., long. 53.2 40 W. This is a fixed white Light, burns at an elevation of 92 feet above high water, and in favourable weather will be seen from E.N.E., seaward, to S.W., 15 nautical miles. Vessels bound Northward by keeping this Light open with the North Head of Catalina until Bonavista Light opens with Cape LeJean, will give the Flowers Rocks an ample berth—or when coming from the Northward and bound for Catalina, by giving the N. Head a moderate berth, you will clear the Brondies Rocks by steering for Green Island Light. It was first exhibited in 1857. Patrick Houlahan, Keeper; William Houlahan, Assistant.

*Cape Race Light.*—Exhibits a Revolving white Light, from sunset to sunrise. The Light will be visible to seaward from N.E. by E. round by the S.E. and S. to W. The Light is elevated 180 feet above the mean water level of the sea, and may be seen in clear weather 19 nautical miles from a ship's deck. The tower is striped red and white vertically. It stands close to the old Beacon, which has been cut down. The Light house is in lat. 46 39.30 N., long.

53.4.30 W., and was first exhibited in 1856. William Hally, Keeper; George Hewett, Assistant.

*Dodding Head, Great Burin Island Light.*—This Light was put in requisition on the 3rd August, 1858, and is exhibited every night from sunset to sunrise. It is revolving, cato-dioptic of the second order, producing a brilliant white Light every minute, with intermediate flashes at intervals of twenty seconds, burning at an elevation of 430 feet above the level of the sea, and in favorable weather can be seen 29 miles—situated in 47.0.26 North Latitude, 55.8.43 West Longitude. Austin Oke, Keeper; John Churchwell, Assistant.

*Offer Wadham Island Light.*—Was first exhibited on the 4th October, 1858, and is lighted every night from sunset to sunrise. The Light is a steady, fixed lens-light, burning on a circular Brick Tower 100 feet above the level of the sea, and can be seen in a favourable state of the atmosphere 15 nautical miles. Situated in Latitude 49.36.0 North—Longitude 53.45.6 West. Charles Power, Keeper; Peter Woods, Assistant.

*Baccalieu Island Light.*—This Light is exhibited every night from the going away of daylight in the evening to the return of daylight in the morning. The Light House is situated on the Northern end of the Island—Latitude 48.8.51 North, Longitude 52.47.50 West,—the tower is of brick, the keeper's dwelling a square building detached from the tower, painted white with the roof red.

The Light is a cato-dioptic first class Holophotal revolving white Light, showing a flash every twenty seconds. It is elevated 445 feet above high water, and can be seen in clear weather 30 nautical miles, and a lesser distance according to the state of the atmosphere. When the Southern end of the Island bears N.N.E., the Light will not be visible when nearer the Island than eight miles. It was first exhibited in 1858. James Ryan, Keeper; John Ryan, Assistant.

*Cape St. Mary's Light.*—Was put in requisition on the 20th September, 1860; it is a revolving cato-dioptic Light of the first order, producing alternately every minute a brilliant red and a white Light, burning at an elevation of 300 feet above the level of the sea, and will be seen in a favourable state of the atmosphere 26 nautical miles from a vessel's deck; situated in 46.49.30 N. lat., 54.11.34 West long. The tower is of brick, and on each side of which stands the dwellings of the Keeper and Assistant, the sides of which are painted white, roofs red. John Reiley, Keeper; William J. Collins, Assistant.

*St. John's.*—Two red lights are exhibited every night from sunset until sunrise, intended as leading marks for vessels entering the Narrows. The lower light on the roof of the Custom House—the other 400 yards in the rear, on a white post, within a few yards of the N.E. angle of the Congregational Church, and 180 feet above the level of the sea. These Lights will be readily distinguished from other lights in the town; and keeping them in a line bearing N. W.  $\frac{1}{4}$  W. will lead in the largest vessel clear of all danger. To

serve as leading marks also during the day, the pediment of the Custom House has been painted white; this is to be kept in line with the upper lantern, also painted white. Exhibited 1st September 1863.

*Brunel Island Light, Mercer's Head, Fortune Bay.*—First exhibited 27th June, 1863. It is a powerful, flashing white Light, and attains its greatest brilliancy every ten seconds. It burns at an elevation of 408 feet above the level of the sea, and in clear weather may be seen at a distance of 35 miles, and be visible in every direction from North round East and South, to W.N.W. Mercer's Head is a bold headland, and situated in long. 55.59.30 W., and lat. 47.16 N. Martin Sparrow, Keeper; James Gaulton, Assistant.

*Galantry Head, Island of St. Peter's.*—The Fixed Light on Galantry Head, (Island of St. Peter's,) since the 10th August, 1862, has been replaced by a Flash Light, with intervals of twenty seconds, and by one red flash after two white flashes; situated in lat. 46.45.30 N., long. 58.27.0 W. elevation above high water 64 metres. Distance at which the Light is visible 18 miles. The Light is hidden at the Northward by the highland of St. Peter's.

*Light at the South entrance St. Peter's.*—Since 1st October, 1862, the entrance of the harbor of St. Peter's, called South Channel, has been marked by two small Fixed Lights, one of which is a white Light illuminating three fourths of the horizon, and placed on the Battery—and the other a red Light, on the plain at the North of the town. The white Light has an elevation of 11 metres, and is visible 6 miles. The red Light is elevated 19 metres, visible 3 miles distance. The line connecting these two lights indicates the Middle Channel.

The position of the red Light has also been so determined that as soon as it is seen on the left of Cape Eagle, vessels coming from Columbiar in beating into the N. E. entrance will have nothing to fear from the shoals of Cape Rouge.

Robert Oke, General Inspector of Light Houses.

*Light Dues*—One Shilling per ton on all vessels entering any port or harbor of the Colony, except coasting, sealing, or fishing vessels; but not to be levied more than once in any one year. Sealing and coasting vessels—Sixpence per ton on registered vessels of 40 tons and upwards; Fifteen Shillings per annum on all vessels less than 40 tons.

The 19th of Victoria, Cap. 5, Sec. 5, enacts—"That no greater sum than £25 sterling shall be in any year levied for Light Dues on any steamer or vessel entering any port of this Colony; and no Steamer plying between Europe and any port of North America, and entering any port of this Colony as a port of Call, shall be liable to pay any Light Dues or other port charges except pilotage."

### Commissioners for Consolidation of Statute Laws of the Colony.

The Hon. the Attorney General, George J. Hogsett, William V. Whiteway, Hon. Robert J. Pinsent, and Daniel W. Prowse.

## Post Office Department.

Post Master General—John Delaney, Esquire.

Chief Clerk and Accountant—James Healy.

Superintendent Money Order Office—James Healy.

Second Clerk and Assorter—John Freeman.

Third Clerk and Assorter—James Furlong.

Assistants—E. Soloman and George R. Lilly.

Letter Carrier and Messenger—George Gaden:

Office hours, from 9 o'clock, a.m., to 4 p.m., Sundays excepted.

### POST MASTERS.

Harbor Grace, Andrew Drysdale; Carbonear, Nicholas Nicholle; Brigus, Sarah Stentaford, (Post Mistress); Trinity, Anne Cross, (Post Mistress); Bonavista, John Lawrence; Greenapond, William Lang; Fogo, James Fitzgerald; Twillingate, Joseph J. Pearce; Bay Bulls, Martin Williams; Ferryland, John Motry; Placentia, Mary Morris, (Post Mistress); Burin, Thomas Winter; Harbor Breton, Thomas Birkett; Burgeo, Francis A. Parsons; Little Placentia, Alexander Burke; New Perlican, Francis Howell; LaPoile, Thomas Reed.

### WAY OFFICERS.

Port-de-Grave, Matthew O'Rielly; Bay Roberts, James Fitzgerald; Blackhead, William Butt; King's Cove, Michael Murphy; Old Perlican, William Christian; Portugal Cove, Mrs. Dooley, (Way Mistress); St. Mary's, James Murphy; Oderin, James Murphy; Paradise, John Power; Salmonier, John Hurley; Harbor Maine, Mrs. Brick, (Way Mistress); Hermitage, M. Francoe; Catalina, John Jeans; Garnish, George Snelgrove; Bay-de-Verde, Elias Picco; Lamaline, James Pitman; Grand Bank, Jonathan Hickman; Fortune, Dr. Haddock; Channel, John Hooper; Holyrood, John Veitch; Topsail, James Moyse; Hant's Harbor, Thomas Smith; Cat's Cove, T. O'Brien; Island Cove, John Crane; Trepassey, E. Devereux; English Harbor, Albert Stirling.

### POSTAL ROUTES.

Summer—Between St. John's and Portugal Cove, every day, except Sunday and Friday, by waggon.

Between Portugal Cove, Brigus, Harbor Grace, and Carbonear, by steamer, tri-weekly; Bay Roberts, weekly.

Overland, by waggon, for Carbonear, via Topsail, Kelligrews, Holyrood, Harbor Maine, Brigus, Port-de-Grave, Bay Roberts, Spaniards', Bay, and Harbor Grace, four hours after the arrival of the Steamer from Halifax.

Winter—Overland Mondays and Thursdays, between St. John's and Carbonear, calling at all the intermediate places.

Between Carbonear and Grates Cove (calling at Heart's Content, New Perlican, Hant's Harbor, and Old Perlican,) weekly, by messenger.

Between Carbonear and Bay-de-Verds, weekly, by messenger, calling at intermediate places.

Between New Perlican and Trinity, weekly, by boat.

Between Trinity and Bonavista, and between Trinity and King's Cove, weekly, by messenger.

Between Bonavista and Greenspond, fortnightly, by boat, touching at King's Cove or Tickle Cove.

Between St. John's, Fogo and Twillingate, monthly, by steamer, or on such other days as the Post Master General may appoint.

Between St. John's and Ferryland, weekly, by waggon, during summer months, and fortnightly in winter.

\*Between Ferryland and Trepassey, fortnightly in summer, and monthly in winter, by messenger.

Between St. John's and Placentia, by waggon, at 4 o'clock, p.m., on the Tuesday after the arrival of Halifax steamer.

\*Between Placentia and St. John's, by waggon, in one hour after the arrival of the Packet Boat from Burin.

\*Between Salmonier and St. Mary's, by messenger.

\*Between Great and Little Placentia, by messenger.

\*Between Little Placentia, LaManche, Sound Island, Harbor Buffet, Red Island, Merasheen and Burgeo, by boat.

\*Between Great Placentia and Burin, by boat, touching at Paradise and Oderin.

\*Between Burin and Garnish, by messenger.

\*Between Garnish, Grand Bank, Fortune and Lamaline, by messenger.

\*Between Garnish and Harbor Breton, calling at English Harbor, by boat.

\*Between Harbor Breton, Burgeo and LaPoile, by boat.

Besides the above-mentioned routes, intermediate Mails are made up and dispatched by Steamer *Ariel*.

Routes marked thus \* are fortnightly during summer, and monthly during winter months.

Newspapers posted in this country, when addressed to any place in Nova Scotia, Canada, P. E. Island, Bermuda, the United States or elsewhere, must be prepaid, by Mail, otherwise they cannot be forwarded, except deposited in the Government Agent's Bag as merchandise.

All Correspondence addressed to the United States, must be prepaid, or it cannot be forwarded.

#### INLAND POSTAGE.

For Letters—Under  $\frac{1}{2}$  oz..... 5 cents.

Under 1 oz..... 10 cents.

5 cents for every additional  $\frac{1}{2}$  ounce.

For book packets, pamphlets, magazines and periodicals, not exceeding three pounds in weight, transmitted by post within the Island, are charged five cents for every quarter pound of their weight.



The Pillar Letter Boxes are cleared at 9 a.m. and 2 p.m. for town delivery, every day, (Sundays excepted,) and also, two hours before closing the mail by the Halifax Steamer. Newspapers dropped in the Pillar Letter Boxes will not be delivered.

PARCEL POST.

Parcels closed at the ends and sides may be posted at any Post Office in Newfoundland for conveyance to any other Post Office (not Way Office) in the Island, at a rate of postage subject to the following conditions:—

- 1.—No letter or letters shall be concealed.
- 2.—The parcel shall not contain any explosive substance, glass, liquid, or other matter likely to injure the ordinary contents of the mail, under penalty of the forfeiture of the parcel.
- 3.—The weight of the parcel shall not exceed 3 lbs, nor the size exceed one foot in length or breadth, or six inches in thickness.
- 4.—Parcels must be prepaid at the following rates:—  

If weighing less than 1 lb. . . . .	20 cents.
Over 1 lb. and not exceeding 2 lb. . . . .	40 cents.
Over 2 lb. and not exceeding 3 lb. . . . .	60 cents.
- 5.—The parcel may be registered on payment of a fee of five cents in addition to the postage.
- 6.—If the name and address of the sender be written on the parcel, it will, if delivery should fail from any cause, be returned unopened to the sender on payment of an additional rate of 20 cents for the return conveyance.
- 7.—The parcel should have the words "by Parcel Post," plainly written over the address. It should be well and strongly put up, and be legibly addressed to the Post Office address of the intended receiver, including the name of the district in which the Post Office is situated. The following is an example of the mode of address recommended:—

BY PARCEL POST.

To——  
 ——Post Office  
 District of——

Sent by——  
 ——District of

PROHIBITARY CLAUSES.

No written communication shall be enclosed in any circular, periodical, pamphlet, book, book parcel, or parcel for the Parcel Post; and no communication shall be written upon any circular, periodical, pamphlet, book, book package, or parcel.

No letter, or any writing, or any marks to serve the purpose of a letter, shall be written upon or enclosed in any newspaper posted to pass as a newspaper.

Books, pamphlets and magazines, for Great Britain, are charged the following rates—the postage in all cases must be prepaid:—

tion  
 Ta  
 A  
 dur  
 tow  
 Gra  
 34  
 A  
 Bou  
 Po,  
 Hes  
 New  
 Tas  
 A  
 ple,  
 1/2 oz.  
 Be  
 1/2 oz.  
 Bo  
 Amer  
 La  
 (East  
 Cor  
 lene,  
 Tunis  
 Gre  
 Den  
 Ind  
 Hel  
 Lau  
 Pol  
 Uni  
 Can  
 Tab  
 United  
 Can  
 Breton  
 N. S.,  
 cents p  
 Outpo

For a packet not exceeding 4 ozs.....	6 cents.
not exceeding 8 ozs .....	12 cents.
over 8 ozs. and not exceeding 1 lb.	24 cents.

And so on, adding 12 cents for every additional 8 ozs., or fraction thereof.

*Table of Postage Rates on Letters posted in Newfoundland for the following countries via England, viz:—*

Africa, Ascension, Borneo, Brazil, Buenos Ayres, Belize, (Honduras), Ceylon, China, Costa Rica, Cuba, Cape of Good Hope, Graytown, Guatemala, Hayti, Labuan, Mexico, Montevideo, Natal, New Granada, Panang, Porto Rico, St. Helena, Surinam, Singapore, 34 cents per  $\frac{1}{2}$  oz.

Aden, Austria, Australia, Baden, Bavaria, Belgrade, Bremen, Bourbon, (Isle of,) Brunswick, Egypt, Falkland Islands, Fernando Po, Frankfort, Gambia, Gibraltar, Gold Coast, Hamburg, Hanover, Hesse, Liberia, Lubeck, Mauritius, Mecklenburg, New South Wales, New Zealand, Oldenburg, Prussia, Saxony, Sierra, Leone, Sweden, Tasmania, per  $\frac{1}{2}$  oz. 22 cents.

Azores, Canary Islands, Italy, (except Papal States) Malta, Naples, Portugal, Sardinia, Sicily, Smyrna, Spain, Switzerland, per  $\frac{1}{2}$  oz. 22 cents.

Belgium, France, Algeria, Madeira, Cape-de-Verde, Holland, per  $\frac{1}{2}$  oz. 16 cents.

Bolivia, Chili, Ecuador, Peru, and places on the West Coast of America, per  $\frac{1}{2}$  oz. 58 cents.

Lanarao, Seres, Teheame, Tenedos via England, South America (East and West Coast of) via Bermuda, per  $\frac{1}{2}$  oz. 32 cents.

Constantinople, Dardanelles, Galataz, Gallipoli, Moldavia, Mytilene, Rhodes, Samsonn, Salonica, Scutari, Syria, Trebizond, Tulcha, Tunis, Varna, per  $\frac{1}{2}$  oz. 20 cents.

Greece and Papal States, per  $\frac{1}{2}$  oz. 28 cents.

Denmark per  $\frac{1}{2}$  oz. 18 cents.

India and the Ionian Islands, per  $\frac{1}{2}$  oz. 30 cents.

Helligoland and Norway 26 cents per  $\frac{1}{2}$  oz.

Launberg, per  $\frac{1}{2}$  oz. 24 cents.

Poland and Russia, per  $\frac{1}{2}$  oz. 30 cents.

United Kingdom, 12 cents, single rate.

Canada, 13 cents, single rate.

*Table of Rates of Postage on Letters for the British Provinces, United States, and West Indies, viz:—*

Canada, New Brunswick, Nova Scotia, (except Halifax), Cape Breton, (except Sydney), 13 cents per  $\frac{1}{2}$  oz.; P. E. Island, Halifax, N. S., Sydney, C. B., United States, West Indies, via Bermuda, 10 cents per  $\frac{1}{2}$  oz. posted at St. John's, 13 cents per  $\frac{1}{2}$  oz. posted at Outports.

Vancouver's Island, British Columbia, South America, (East and West Coast of) via Bermuda, 34 cents per  $\frac{1}{2}$  oz.

*Rule of Rating Letters by British Packet.*

For the United States, British Provinces and Possessions, to be charged with a single rate of Postage, if not exceeding the weight of  $\frac{1}{2}$  an oz.; double rate if exceeding  $\frac{1}{2}$  but not over 1 oz.; quadruple rate if exceeding 1 but not over 2 ozs.; and so on charging 2 rates for every oz., or fractional part of an oz., over the first oz.

The United Kingdom and West Indies, under  $\frac{1}{2}$  oz. one rate; 1 oz. two rates;  $1\frac{1}{2}$  oz. three rates; and so on adding one rate for every  $\frac{1}{2}$  oz.

Letters posted in Newfoundland for delivery at any place within the Island, are charged 5 cents for every  $\frac{1}{2}$  oz.

By the Act 28 Vic., Cap 2, all letters sent from this Colony, and all local letters deposited in any Post Office in the Colony for delivery or transmission within it, shall be prepaid by Stamps, or otherwise such letters shall be chargeable with double postage to the receiver.

Parties desirous of vending Newfoundland postage stamps, will be allowed a commission of five per cent. Stamps, in all cases, to be paid for in advance.

**MONEY ORDER BRANCH.**

James Healy, Superintendent.

Office hours from 9 a.m. to 4 p.m.

Money Orders are now interchanged with the United Kingdom, Nova Scotia, P. E. Island and Canada, at the following rates of Commission:—

*Scale for United Kingdom*—Orders up to £2 stg., 1s. stg.; from £2, up to £5, 2s.; from £5 up to £7, 3s.; from £7 up to £10, 4s.

*Scale for the Provinces*—Orders up to £5, 1s.; from £5 to £10 2s. No single Order can be granted for more than £10. No halfpence to be introduced in the orders.

**SYSTEM.**

1—Money Orders are made out in forms supplied for the use of the Money Order Offices.

2—Persons applying for Money Orders are recommended to use printed "Application Forms" printed for that purpose.

3—Place of payment of a Money Order may be changed in accordance with instructions provided therefor.

4—Alteration of payee's name may be effected, by issue of a new order and payment of commission thereon.

5—Applicants for Money Orders are expected to observe due care in the examination of the same, relative to filling and stamping; defect in Orders, when presented for payment, may cause difficulty and delay, for which the paying Office is not to be held accountable.

6—Postmasters should be particularly careful to obtain from the person who presents a Money Order, whether the rightful owner or not, full information as to the Christian name, surname and address, of the party who originally obtained it, unless such party be a firm, when the name of the firm will suffice. *The only exception to this rule is*—When an Order is presented through a Bank, in which case it will suffice that the order, being properly signed, be also crossed with the Banker's name.

7—As, however, *after once paying a Money Order, by whomsoever presented, the Office will not be liable to any further claim*, the public are strictly cautioned,—

1st—To take all means to prevent the loss of the Money Order.

2nd—To be careful, on taking out an Order, to state correctly the Christian as well as the surname of the person in whose favor it is to be drawn.

3rd—To see that the name of the person taking out the Money Order is correctly known to the person in whose favor it is drawn.

8—Payment of a Money Order must be obtained before the end of the sixth calendar month after that in which it was issued, otherwise a new order will be necessary, for which a second commission will be charged; and if the order be not paid before the twelfth calendar month after that in which it was issued, all claims to the money will be lost.

Neglect of the foregoing instructions will risk the loss of the money, besides leading to delay and trouble in obtaining payment.

The Money Order Offices in Newfoundland, at present, are: General Post Office, St. John's; Post Offices at Bay Bulls, Bonaville, Brigus, Burgeo, Burin, Carbonear, Ferryland, Fogo, Greenspond, Harbor Breton, Harbor Grace, Placentia, Trepassay, Trinity, Twillingate.

9—Postmasters should recommend the use of Money Orders for the transmission of money, in preference to such transmission otherwise.

## Post Office Directory for Newfoundland.

POST TOWNS—Those marked thus \* are Money Order Offices.

Name of Office.	District.	Name of Postmaster.
*Brigus	Port de Grave	Mrs. Stensford
*Bonavista	Bonavista	John Lawrence
*Burin	Burin	Thomas Winter
*Burgeo	Burgeo and LaPoile	Francis A. Parsons
*Bay Bulls	Ferryland	Martin Williams
*Carbonear	Carbonear	Nicholas Nicholl
*Fogo	Fogo and Twillingate	James Fitzgerald
Ferryland	Ferryland	John Morry
*Greenspond	Bonavista	William Lang
*Harbor Grace	Harbor Grace	Andrew Drysdale
*Harbor Breton	Fortune Bay	Thomas Birkett
Little Placentia	Placentia and St. Mary's	Alexander Burke
*Placentia	Placentia and St. Mary's	Miss Morris
*Twillingate	Fogo and Twillingate	Joseph J. Pearce
*Trinity	Trinity	Anne Cross
New Perlican	Trinity	Francis Howell
La Poile	Burgeo and La Poile	Thomas Read

## WAY OFFICES.

Name of Office.	District.	Way Office Keeper
Bay Roberts	Port de Grave	James Fitzgerald
Blackhead	Bay de Verds	William Butt
Bay-de-Verds	Bay de Verds	Elias Picco
Catalina	Trinity	John Jeans
Cats Cove	Harbor Main	Timothy O'Brien
Channel	Burgeo and La Poile	John Hooper
Fortune	Burin	Dr. Haddock
Grand Bank	Burin	Jonathan Hickman
Harbor Main	Harbor Main	Mrs. Brick
Hermitage	Fortune Bay	M. Frances
Hant's Harbor	Trinity	Thomas Smith
Holyrood	Harbor Main	John Veitch
Island Cove	Harbor Grace	John Crane
King's Cove	Bonavista	Michael Murphy
Lamaline	Burin	James Pitman
Oderin	Placentia and St. Mary's	James Murphy
Old Perlican	Trinity	William Christian
Paradise	Placentia and St. Mary's	John Power
Port de Grave	Port de Grave	Matthew O'Kielly
Portugal Cove	St. John's East	Margaret Dooley
Salmonier	St. Mary's and Placentia	John Hurley
St. Mary's	Placentia and St. Mary's	James Murphy
Topsail	Harbor Main	James Moyse
Garnish	Burin	George Snelgrove
Trepassy	St. Mary's	Ellen Devereaux
La Manche	Placentia and St. Mary's	
English Harbor	Fortune Bay	Albert Stirling

**Alphabetical List of Towns, Villages, and Settlements.**

Names of Places	Districts.	Post Towns.
Adam's Cove	Bay de Verds	Carbonear
Amherst Cove, (Upper)	Bonavista	Trinity
Amherst Cove, (Lower)	Bonavista	do
Apsey Cove	Fogo	Fogo
Aqua Forte	Ferryland	Ferryland
Admiral's Beach	St. Mary's and Placentia	St. Mary's
Angel's Cove	do do	Placentia
Arnold's Cove	do do	Little Placentia
Amos Cove	do do	Great Placentia
Belle Isle	St. John's East	Portugal Cove
Balline	do	do
Broad Cove	do	do
Blackhead	St. John's West	St. John's
Broad Cove	Harbor Main	Harbor Main
Bacon Cove	do	do
Burnt Head, (Cupids)	Brigus	Brigus
Broad Cove	do	do
Bull Cove	do	do
Blow-me-Down	do	do
Bareneed	do	do
Bigus	do	do
Bryant's Cove	Harbor Grace	Harbor Grace
Bishop's Cove	do	do
Beachy Cove	do	do
Blow-me-down	Bay de Verds	Carbonear
Broad Cove, (No: S.)	do	do
Blackhead	do	do
Bay de Verds	do	do
Boney Brook	do	do
Bird Island Cove	Trinity	Trinity
Bichey Cove	do	Bonavista
Barrow Harbor	do	Trinity
Back Harbor	Fogo and Twillingate	Twillingate
Broom Close	Trinity	Trinity
Bloody Bay	do	do
Bonavista	Bonavista	Bonavista
Bragg's Island	do	do
Burnt Island	do	do
Batterton's Island	do	do
Bayly's Cove	do	do
Bermoth Island	do	Greenspond
Bloody Arm	Fogo	Fogo
Beaver Cove	do	do
Bard Islands	do	do
Blackhead Cove	Twillingate	do
Black Island	do	do
Burnt Bay	do	do
Birchy Bay	do	do

Names of Places.	Districts.	Post Towns.
Bet's Cove	Fogo	Fogo
Bay Bulls	Ferryland	Bay Bulls
Burnt Cove	do	do
Balline	do	do
Brigus	do	Ferryland
Biscay Bay	Placentia and St. Mary's	Trepassey
Barisnay	St. Mary's	St. Mary's
Beckford C. Shore	Placentia and St. Mary's	Placentia
Branch	Placentia	do
Bordeaux	do	Little Placentia
Black River	do	do
Barren Island	do	do
Britt's Hole	do	do
Burgeo	do	do
Bona	do	Great Placentia
Burnt Islands	do	do
Bare Harbor	do	do
Beau Bois	do	do
Burin	Burin	Burin
Brunet Island	Fortune Bay	Harbor Breton
Bay de East	do	English Harbor
Bay de North	do	do
Bock Side Cove	Trinity	Trinity
British Harbor	do	do
Black Duck Cove	do	do
Boun's Dear Harbor	do	do
Broad Cove	do	do
Barrow	Fortune Bay	English Harbor
Belloram	do	do
Blue Pine	do	do
Bay L'Argent	do	do
Rail Bay	do	do
Banburg's Cove	do	do
Boxy	do	Harbor Breton
Blanchett	do	do
Bay de l'eau	do	do
Brimball's Head	do	do
Bonne Bay	do	do
Brimball's Store House	La Poile	Burgeo
Burgeo (Upper)	do	do
Burgeo (Lower)	do	do
Brazils	do	La Poile
Baker's Tickle	do	do
Burnt Islands	do	do
Brent's Cove	do	do
Bede Cove	do	do
Bear Cove	do	do
Cape Spear	St. John's East	St. John's
Chamberlain	Harbor Main	St. John's
Chapel's Cove	do	Harbor Main
Cat's Cove	do	Brigus

Names of Places.	Districts.	Post Towns.
Colliers	Harbor Main	Brigus
Cupids	Brigus	do
Caplin Cove	do	do
Clark's Beach	do	do
Centre Harbor	Harbor Grace	Harbor Grace
Coosh	do	do
Coley's Point	do	do
Cartonear	Carbonear	Carbonear
Cloun's Cove	Bay de Verds	do
Caplin Cove	do	do
Chapel Arm	Trinity	Harbor Grace
Chance Cove	do	do
Cat Cove	do	do
Cuckold's Cove	do	Trinity
Catalina	do	do
Careless Harbor	do	do
Cast's Cove	do	do
Cottreil's Island	Bonavista	do
Cobbler's Island	do	Bonavista
Cape Island	do	dc
Cape Freels	do	do
Cat Harbor	Fogo	Fogo
Can Island	do	do
Cape Fogo	do	do
Change Islands	Twillingate	Twillingate
Caplin Cove	Fogo	Fogo
Caplin Bay	Ferryland	Ferryland
Cape Broyle	do	do
Cape Race	St. Mary's and Placentia	Trepassey
Cape Pine	do do	do
Colinet	do do	St. Mary's
Cape Dog	do do	do
Cuslett	do do	Great Placentia
Clattice Harbor	do do	do
Corbin	Burin	Burin
Conn	Fortune Bay	English Harbor
Cinque Serf	do	do
Corbon	do	do
Con Harbor	do	Harbor Breton
Corbon	do	do
Coomb's Cove	do	do
Connaigre Bay	do	do
Cul de Sac	do	do
Cape La Have	do	do
Coppett	do	do
Cotteau	do	do
Channel	Burgeo and La Poile	La Poile
Dock-port de Grace	Brigus	Brigus
Dock-Point	Harbor Grace	Harbor Grace
Daniel's Cove	Trinity	Carbonear
Dildo Cove	do	Harbor Grace



Names of Places.	Districts.	Post Towns.
Deer Island	Bonavista	Bonavista
Dead Man's Bay	Fogo and Twillingate	Fogo
Doing Cove	do do	Greenspond
Dog Bay	do do	Twillingate
Distress	Placentia and St. Mary's	Placentia
Dog Harbor	do do	Little Placentia
Davis's Cove	do do	do
Dureill	Burin	Burin
Dawson's Cove	Fortune Bay	Harbor Breton
Despair Bay	do	do
Doctor's Harbor	do	English Harbor
Dragon Bay	Burgeo and La Poile	Burgeo
Deer Island	do do	do
English Harbor	Trinity	Trinity
Exploits Burnt Island	Fogo and Twillingate	Twillingate
English Harbor	Fortune Bay	Harbor Breton
English Harbor, near } Belloram }	do	do
Eastern Point	Burgeo and La Poile	La Poile
Flat Rock, (Torbay)	St. John's, East	St. John's
Freshwater	do do	do
Fox Trap	Harbor Main	do Topsail
Freshwater	Bay de Verds	Carbonear
Fox Harbor	Trinity	Trinity
Friday's Cove	do	do
Fool's Island	do	do
Freshwater Bay	Bonavista	do
Flat Island	do	do
Flower Island	do	Bonavista
Fair Island	do	Greenspond
Fogo Har. and Islands	Fogo and Twillingate	Fogo
Fortune Harbor	do do	Twillingate
Flurry's Bite	do do	do
Ferryland	Ferryland	Ferryland
Fermeuse	do	do
Fox Harbor	Placentia and St. Mary's	Little Placentia
First Beach & Freshwtr	do do	Great Placentia
Flat Island	Burin	Burin
Fox Cove	do	do
Fortune	do	do
Forn	Fortune Bay	Harbor Breton
Furby's Cove	do	do
Fox Island Harbor	do	do
Francois	Burgeo and Poile	La Poile
Frenchman's Cove	do do	do
Gullies (Upper)	Harbor Main	Topsail
Gullies (Lower)	do	do
Gaslers	do	do
Gullies and Goulds	Brigus	Brigus
Grate's Cove	Bay de Verds	Carbonear
Green's Harbor	Trinity	do

Names of Places.	Districts.	Post Towns.
Goosberry Cove	Trinity	Harbor Grace
Ganny Cove	do	do
Green Bay	do	Trinity
Green Island Cove	do	do
Gooseberry Island	Bonavista	Bonavista
Greenspond and Tickle	do	Greenspond
Grant's Island	do	do
Gander Bay	Fogo and Twillingate	Fogo
Grapes Cove	do do	do
Goulds (Bay Bulls)	St. John's, West	St. John's
Gaskier	St. Mary's and Placentin	St. Mary's
Gull Cove	Placentia and St. Mary's	Placentia
Golden Bay	do do	do
Gooseberry	do do	do
Grandy's Point	do do	do
Gallow's Harbor	do do	Great Placentia
Gold's Cove	Burin	Burin
Grand Bank	do	do
Grand Beach	do	do
Garnish	Fortune Bay	do
Grand John	do	Harbor Breton
Grant's Cove	do	do
Great Harbor	do	do
Grole	do	do
Gripe Island	do	do
Gaultois	do	do
Great Jervois	do	do
Grandy's Brook	do	Burgeo
Gana	Burgeo and La Poile	La Poile
Horse Cove	Conception Bay	Portugal Cove
Holyrood, Nor. & Sou.	Harbor Main	St. John's
Harbor Main	do	Harbor Ma'
Hall's Town	Port de Grave	Brigus
Hibb's Hole	do	do
Harbor Grace	Harbor Grace	Harbor Grace
Hant's Harbor	Trinity	Carbonear
Heart's Desire	do	Harbor Grace
Heart's Delight	do	do
Heart's Content	do	Carbonear
Heart's Ease	do	Harbor Grace
Hare Bay	Fogo and Twillingate	Fogo
Harbor Island	do do	do
Herring Neck	do do	Twillingate
Hall's Bay	do do	do
Holyrood, Rood-pond	St. Mary's and Placentia	St. Mary's
Harry Cove	do do	do
Harbor Buffett	do do	Little Placentia
Hay Stack	do do	do
Harbor Mills	Fortune Bay	Harbor Breton
Hare Harbor	do	do
Harbor Breton	do	do

Names of Places.	Districts.	Post Towns.
Hermitage Cove	Fortune Bay	Harbor Breton
Harry's Cove	do	do
Harbor Gully	do	do
Hatter's Point	Burgeo and La Poile	Burgeo
Harbor Le Cou	do	La Poile
Hiscock's Point	do	do
Island Cove	Harbor Grace	Harbor Grace
Island Cove, (Lower)	Bay de Verds	Carbonear
Island Cove	Trinity	Harbor Grace
Ireland's Eye	do	do
Indian Arm	Bonavista	Bonavista
Indian Bay	do	do
Indian Islands	Fogo and Twillingate	Fogo
Indian Cove	do do	Twillingate
Isle of Valen	Placentia and St. Mary's	Great Placentia
Isle of Glue	Fortune Bay	English Harbor
Isle of Mort	Burgeo and La Poile	La Poile
Juniper Stump	Port de Grave	Brigus
Juggler's Cove	Harbor Grace	Harbor Grace
Job's Cove	Bay de Verds	Carbonear
Joe Batt's Arm	Fogo and Twillingate	Fogo
Jackson's Arm	do do	do
John's Pond	St. Mary's and Placentia	St. Mary's
Jigging Hole	Trinity	Trinity
Jean de Bay	Burin	Burin
Jack Fountain	Fortune Bay	Harbor Breton
Jessey Harbor	do	do
Kelligrews	Conception Bay	St. John's, Top'l
Kerley's Harbor	Trinity	Trinity
Knight's Cove	do	do
King's Cove	do	King's Cove
Keel's	do	do
King's Cove	Fogo and Twillingate	Fogo
King's Harbor	Burgeo and La Poile	La Poile
Logy Bay	St. John's East	St. John's
Long Pond	Harbor Main	do Topsail
Lance Cove	do	do do
Long Beach	Port de Grave	Brigus
Lower Small Point	Bay de Verds	Carbonear
Low Point	do	do
Lance Cove	Trinity	do
Lower Amherst Cove	Bonavista	Bonavista
Lion's Den	Fogo and Twillingate	Fogo
Loom Bay	do do	Twillingate
Leading Ticks	do do	do
Little Bay Island	do do	do
Little Island	St. Mary's	St. Mary's
Little Salmonier	do	do
Lear's Cove	Placentia and St. Mary's	Great Placentia
Little Placentia	do do	Little Placentia
La Manche	do do	do

Names of Places.	Districts.	Poet Towns.
Little Harbor	Placentia and St. Mary's	Little Placentia
Little Bay	Burin	Burin
Lawn	do	do
Lamaline	do	Lamaline
Longue de Serf	Fortune Bay	Harbor Breton
Lobster Cove	do	do
Lolly Cove	do	English Harbor
Little Bay	do	do
Little Bay	Fogo and Twillingate	Twillingate
Lambell's Passage	Fortune Bay	Harbor Breton
Little River	do	do
Little Bay—La Poile	Burgeo and La Poile	La Poile
La Poile	do do	do
La Plante	do do	do
Maddox Cove	St. John's West	St. John's
Middle Bight	Harbor Main	Topssail
Manuels	do	do
Middle Arm	do	Harbor Main
Middle Cove	St. John's East	St. John's
Mercer's Cove	Harbor Grace	Harbor Grace
Mosquito	Carbonear	Carbonear
Marshall's Folly	Bay de Verds	do
Mulley's Cove	do	do
Muddy Hole	Fogo and Twillingate	Fogo
Merriott's Harbor	do do	Twillingate
Moreton's Harbor	do do	do
Mause Point	do do	do
Mobie	Ferryland	Bay Bulls
Mosquito Island	St. Mary's and Placentia	St. Mary's
Mall Bay	do do	do
Mother Ixx's	do do	do
Middle House	do do	St. John's
Muzzle Pond	do do	St. Mary's
Marguise	do do	Little Placentia
Mussel Harbor	do do	do
Merashcen	do do	do
Mahoney's Cove	do do	Great Placentia
Murphy's Cove	do do	do
Mortier Bay	Burin	Burin
Molyers and Barrisway	do	do
Mose Ambrose	Fortune Bay	Harbor Breton
Miller's Passage	do	do
Mosquito	Burgeo and La Poile	Burgeo
Moon's Face	do do	La Poile
Margaree	do do	do
Northern Gut	Port de Grave	Brigus
New Perlican	Trinity	Carbonear
New Harbor	do	Harbor Grace
New Bonaventure	do	Trinity
Norman's Cove	do	do

Names of Places.	Districts.	Post Towns.
New Harbor	Trinity	Trinity
Newell's Island	do	do
Newman's Cove	Bonavista	Bonavista
Noggin Cove	Fogo and Twillingate	Fogo
New Bay	do do	Twillingate
Nimrod	do do	do
Nipper's Harbor	do do	do
North-Harbor	St. Mary's and Placentia	St. Mary's
North Harbor	do do	Little Placentia
New Harbor	Fortune Bay	Harbor Breton
New Harbor	do	Burgeo
Outer Cove	St. John's East	St. John's
Otterbury	Bay de Verds	Carbonear
Ochre Pit Cove	do	do
Old Perlican	Trinity	do
Old Shop	do	Harbor Grace
Old Bonaventure	do	Trinity
Open Hall	Bonavista	do
Oliver's Cove	Placentia and St. Mary's	Placentia
Oderin	do do	do
Old Man's Bay	Burgeo and La Poile	Burgeo
Pouch Cove	St. John's East	St. John's
Portugal Cove	St. John's East	do Por'l Cove
Petty Harbor	do West	do
Port de Grave	Port de Grave	Brigus
Perry's Cove	Bay de Verds	Carbonear
Plate Cove	Bonavista	Trinity
Pouch Cove	do	Bonavista
Pool's Island	do	do
Pinchard's Island	do	do
Pig Island	do	do
Pond Head	do	Greenspond
Portugal Cove	St. Mary's and Placentia	Trepassey
Point La Haye	do do	St. Mary's
Patrick's Cove	do do	Great Placentia
Point Verd	do do	do
Placentia (Great)	Placentia and St. Mary's	do
Placentia (Little)	do do	Little Placentia
Point Mall	do do	do
Presque	do do	Great Placentia
Paradise (Great)	do do	do
Paradise (Little)	do do	do
Paradise Sound	do do	do
Petit Fort	do do	do
Pickaree	Fortune Bay	Harbor Breton
Petites	Burgeo and La Poile	La Poile
Quidi Vidi	St. John's East	St. John's
Rip Rap	Port de Grave	Brigus
Red Cliff Cove	Bay de Verds	Carbonear
Random Sound	Trinity	Trinity
Rider's Harbor	do	do

Names of Places.	Districts.	Post Towns.
Ragged Harbor	Fogo and Twillingate	Fogo
Ragged Harbor	Trinity	Trinity
Red Cliff Island	Bonavista	do
Round Harbor	Fogo and Twillingate	Fogo
Renews	Ferryland	Ferryland
Rams Islands	Placentia and St. Mary's	Little Placentia
Red Island	do do	do
Ragged Islands	do do	do
Rushoon Harbor	do do	do
Red Harbor	Burin	Burin
Rund's Cove	Trinity	Carbonear
Rock Harbor	Burin	Burin
Rencontre	Fortune Bay	Harbor Breton
Round Cove	do	do
Raymond Island	do	do
Round Harbor	do	do
Richard's Harbor	Burgeo and La Poile	do
Rencontre	do do	do
Ramao	do do	Burgeo
Red Island	do do	do
Rock Haroor, West	do do	do
Rotto	do do	La Poile
Rose Blanche	do do	do
Seal's Cove	Harbor Main	St. John's, Top'l
Salmon Cove	do	Harbor Main
Salmon Cove (S. Gut.)	Port de Grave	Brigus
Ship Cove	do	do
Sandy Cove	do	do
Spaniard's Bay	Harbor Grace	Harbor Grace
Salmon Cove Head	Bay de Verds	Carbonear
Spout Cove	do	do
Scilly's Cove	Trinity	do
Seal Cove	do	do
Shoal Harbor	do	Trinity
Sill down	do	do
Selby's Cove	do	do
Spaniard's Bay	do	do
Ship Cove	do	do
Salmon Cove	do	do
Spillard's Cove	do	do
Stock's Cove	Bonavista	do
Sandy Cove	do	do
Salvage	do	do
Shoe Cove	do	Bonavista
Swain's Island	do	Trinity
Ship Island	do	do
Seldom-come-by	Fogo and Twillingate	Fogo
Shoal Bay	do do	do
Stocking Harbor	do do	do
Snook's Arm	do do	Twillingate
Shoe Cove	do do	do

Names of Places.	Districts.	Port Towns.
St. Shots	Placentia and St. Mary's	Trepassey
St. John's	St. John's	St. John's
Ship Cove	Placentia and St. Mary's	Great Placentia
St. Lawrence (Great)	Burin	Burin
St. Lawrence (Little)	do	do
Spencer's Cove	Placentia and St. Mary's	Little Placentia
Seeveley's Cove	do do	do
Southern Harbor	do do	do
Sandy Harbor	do do	Great Placentia
St. Kyran's	do do	do
South East Bite	do do	do
Spanish Room	Burin	Burin
Sagona Island	Fortune Bay	Harbor Breton
Stones Cove	do	do
St. Jacques	do	do
S. W. Bainsway	do	do
Sam Hitches	do	do
Southern Harbor	do	English Harbor
Swoir Cove	Burgeo and La Poile	Burgeo
Seal Island Harbor	do do	La Poile
Topsail	Harbor Main	S. John's, Topal.
Turk's Gut	Port de Grave	Brigus
Turk's Cove	Trinity	Carbonear
Tickle Harbor	do	Harbor Grace
Trinity	do	Trinity
Trouty	do	do
Thoroughfare	do	do
Tilton Harbor	Fogo and Twillingate	Fogo
Three Arms	do do	do
Twillingate	do do	Twillingate
Tory Town	do do	do
Tizzard's Harbor	do do	do
Tilt Cove	do do	do
Triton Islands	do do	do
Torbay	St. John's, East	St. John's
Trepassey	St. Mary's and Placentia	Placentia
Tack's Beach	do do	Little Placentia
Toselo	do do	Great Placentia
The Brook	Fortune Bay	English Harbor
Turnip Cove	do	do
The Reach	do	do
Upper Small Point	Bay de Verds	Carbonear
Upper Amherst Cove	Bonavista	Bonavista
Virgin's Cove	Placentia and St. Mary's	Little Placentia
Vers Island	Bonavista	Bonavista
Victoria Town	do	do
Vitter's Cove	Trinity	Trinity
White Monday Hill	Harbor Grace	Harbor Grace
Western Bay	Bay de Verds	Carbonear
White Point	Trinity	Trinity
Whitless Bay	do	do

N  
W  
W  
W  
W  
W  
W  
W  
W  
W

G  
M  
H  
a  
N  
D  
b  
C  
T  
o'  
b

C

J  
I

C  
H

P  
G  
B  
M  
C  
T  
F  
B  
J

Names of Places.	Districts.	Post Towns.
Warren's Harbor	Bonavista	Bonavista
West'n Arm Rocky Bay	Fogo and Twillingate	Fogo
Western Head	do do	Twillingate
Wild Cove (Sel. Com By)	do do	Fogo
Ward's Harbor	do do	do
Waldron's Cove	do do	do
Witless Bay	Ferryland	Bay Bulls
Woody Island	Placentia and St. Mary's	Little Placentia
Wreck Island	Burgeo and La Poile	Burgeo
Western Point	do do	La Poile

### Savings' Bank.

**Governors**—Five members of the House of Assembly and three Members of the Legislative Council, viz:—The Hon. the Speaker, Hon. Attorney General, Hon. Ambrose Shea, Hon. John Bemister, and John Leamon, Esq., of the House of Assembly; the Honbles. Nicholas Stabb, Robert Kent, and James S. Clift, of the Council.

**Directors**—Hon. N. Stabb, Hon. F. B. T. Carter, and Hon. Ambrose Shea.

**Cashier**—Hon. Edward Morris.

The Bank is open every Monday between the hours of 12 and 2 o'clock, for Depositors' business; and on Wednesdays for discount business, from 11 to 2 o'clock.

BRANCH BANK, HARBOR GRACE.

Cashier and Clerk—Joseph Peters.

### Poor Commissioners.

Joseph Shea, Esq. M.D., (Stipendiary,) Hon. John Bemister.—Inspector, ———.

### Commissioners for Reduction of Public Debt.

Hon. Laurence O'Brien, and the Hon. Receiver General.

### Commissioners of Wrecked Property.

Placentia and St. Mary's, George Simms, Jr. District of Burin, George Bishop. Channel, John Hooper. La Poile, Thomas Read Burgeo, Francis Parsons. Placentia, James E. Croucher. St. Mary's, James Murphy. Ferryland, Martin Williams and W. W. Carter. Bay de Verds, John Lewis. Trinity South, James L. Mews. Trinity North, Ronald Brenner. Greenspond, John T. Oakley. Fogo, James Fitzgerald. Twillingate, Thomas Peyton. Fortune Bay, Thomas Birkett. Conception Bay, G. W. R. Hierlihy. St. John's, John B. Bulley. Labrador, Robert H. Ellis.



### Commissioners of Pilots.

Chairman—John B. Bulley, Esq.; Hon. Laurence O'Brien, Hon. Nicholas Stabb, Robert Grieve, Hon. Ambrose Shea.

#### Table of Rates of Pilotage of Vessels in and out of the Harbor of St. John's.

	Currency.
Vessels under 80 tons new measurement.	£2 0 0
Vessels from 80 to 100 tons new measurement	2 10 0
Vessels from 100 to 120 tons new measurement	2 15 0
Vessels from 120 to 160 tons new measurement	3 0 0
Vessels from 160 to 200 tons new measurement	3 5 0
Vessels from 200 to 240 tons new measurement	3 10 0
Vessels from 240 to 280 tons new measurement	3 15 0
Vessels from 280 to 300 tons new measurement	4 0 0
Vessels from 300 to 350 tons new measurement	5 0 0
Vessels from 350 to 400 tons new measurement	6 0 0
Vessels from 400 to 500 tons new measurement	7 0 0
Vessels from 500 to 600 tons new measurement	8 0 0
Vessels from 600 to 700 tons new measurement	9 0 0
Vessels from 700 to 800 tons new measurement	10 0 0
Over that size—for every 100 to ns additional	0 10 0
And on no one vessel is the pilotage to exceed	12 0 0

All coasting vessels which may take pilots to pay one half of the above rates of pilotage, in proportion to their tonnage.

The above scale of pilotage, shall be payable on the register tonnage of all such vessels, as ascertained before going out of the harbor.

	Currency.
Her Majesty's Ships under sixth-rate	£3 10 0
Do. do of fourth, fifth, and sixth-rate	6 10 0
Do. do of first, second, and third-rate	8 10 0

All merchant or mail steamers to pay 6d. for each horse power, and on no one ship to exceed twelve pounds currency, to be ascertained either by ship's register, or if necessary, by captain's affidavit.

### Board of Health.

*Health Officers.*—Henry Shea, M.D., St. John's. William Allan, M. D., Harbor Grace. Richard Berny, M.D., Carbonear. Francis Moran, M.D., Burin. Arthur Drevar, M.D., Fortune Bay. William Stirling, M.D., Twillingate. Hay Findlater, M.D., Fogo. Robert White, M.D., Trinity.

*Health Wardens for Town and District of St. John's.*—Dr. Shea, Chairman; Robert R. W. Lilly, Secretary; Hon. P. G. Tessier, Hon. James S. Clift, Hon. Robert Kent, and Stephen Rendell, F. J. Wyatt, Robert Grieve, Robert Thorburn, John Bowring, Joseph J. Little, John Casey, J. J. Rogerson, Thomas R. Smith.

*Medical Officer to Board of Trade for Sick Seamen, Port of St John's.*—William C. Simms, M.D.

## Judicial Department.

*Supreme Court.*—Chief Justice—Honorable Hugh W. Hoyles. Assistant Judges—Honorable Philip Francis Little and Bryan Robinson. Attorney General—Honorable Frederick B. T. Carter. Solicitor General—Honorable John Hayward. Queen's Counsel—Hon. George H. Emerson, Hon. Frederick B. T. Carter, Hon. John Hayward, William V. Whiteway, and Hon. R. J. Pinsent. Chief Clerk and Registrar Supreme and Central Circuit Courts—Matthew W. Walbank. Chief Clerk and Registrar Northern Circuit Court—Lewis W. Emerson. Chief Clerk and Registrar Southern Circuit Court—George Simms. Crier of the Supreme Court and Tipstaff—William Howlin.

*Barristers and Attorneys of the Supreme Court at St. John's, according to seniority, exclusive of the Attorney Generals and Queen's Counsel.*—John S. Stevens, Robert R. W. Lilly, George J. Hogsett, Thomas J. Kough, Matthew W. Walbank, Archibald Emerson, Charles H. Simms, Augustus O. Hayward, Daniel W. Prowse, Joseph J. Little, William L. O'Donnell, Michael J. O'Mara, Prescott Emerson, Robert J. Kent, Henry T. B. Wood, Robert J. Parsons, Jr., William O. Wood.

*Attornies at Law*—Robert R. Holden, John Joseph Delaney.

*Students admitted Members of the Law Society*—James M. Winter, Alexander J. W. McNielly, John H. Boone.

*Barristers and Attorneys, Northern District*—Hon. John Hayward, Henry C. Watts, Harbor Grace; Henry A. Clift, Twillingate.

*Law Society Benchers*—W. V. Whiteway, Treasurer; Hon. R. J. Pinsent, Secretary; Solicitor General, Matthew W. Walbank, Thomas J. Kough.

*Sheriffs*—Central District, John V. Nugent. Northern District, Garland C. Gaden. Southern District, John Stephenson.

*Masters-in-Chancery*—Hon. George H. Emerson, Thomas J. Kough, Hon. Robert J. Pinsent, William V. Whiteway, M. W. Walbank.

*Vice-Admiralty Court*—Judge, the Chief Justice for the time being; Registrar, P. W. Carter. Marshal, James Bayly. Surrogates, Robert R. W. Lilly, D. W. Prowse and Henry T. B. Wood, St. John's. Lewis W. Emerson, Harbor Grace.

### TERMS OF COURTS.

*Central Circuit Court*—Spring Term commences 20th April, and to continue three weeks. Autumn Term, 20th October, and to continue three weeks, with power to the presiding Judge to prolong the term from day to day, not exceeding six days in all.

*Sessions after Term*—The second Monday in February, March and July, and to continue for a period not exceeding six days.

*Supreme Court*—Spring Term commences 20th May, to continue three weeks. Autumn Term, 20th November, and to continue three weeks, with power to the Judges to prolong the term from day to day, not exceeding six days in all.

*Sessions after Term*—The first Monday in February, March, April, and July, and to continue for a period not exceeding six days.

*Commissioners for Issuing Mesne and Final Process and Subpœnas returnable into the Supreme and Circuit Courts, for taking Affidavits, and Recognizance of Bail in any Suit depending in said Courts*

*Central District*—Matthew W. Walbank and Henry T. B. Wood, St. John's.

*Northern District*—Lewis W. Emerson, John Fitzgerald, Harbor Grace. Israel McNeil, Carbonear. John C. Nuttall, John Wilcox, Brigus. John Lewis, Lower Island Cove. George W. R. Hierlithy, Bay Roberts. William Holden, Harbor Maine. James L. Mews, Hant's Harbor. William Christian, Old Perlican. Michael Howley, New Perlican. Benjamin Sweetland and Robert Bayly, Trinity. Alexander Bremner, Catalina. John Lawrence, Bonavista. John T. Oakley, William Lang, Greenspond. James Fitzgerald, Fogo. John Peyton, Twillingate. Charles Newhook, New Harbor. Michael Murphy, King's Cove. John M. Maddock, Port-de-Grave. John Ryall, Heart's Content.

*Southern District*—Luke Brown, Ferryland. Francis L. Bradshaw, Placentia. Thomas E. Collett, Harbor Buffett. John Hooper, Port-aux-Basque. William Pitman, Lamaline. Josiah Blackburn, Grand Bank. Francis A. Parsons, Burgeo. Thomas Read, La Poile. James Murphy, St. Mary's. George Simms, Trepassey. Thomas Birkett, Harbor Breton. James Moran, Edward Morris, Burin. Nelson Bailie, Oderin. Joseph J. Haddock, Fortune, (Fortune Bay).

#### STIPENDIARY MAGISTRATES.

St. John's—Peter W. Carter and Thomas Bennett.

Conception Bay—Joseph Peters, Harbor Grace. Israel McNeil, Carbonear. John Wilcox, Brigus.

Trinity Bay—Benjamin Sweetland, Trinity. James L. Mews, Old Perlican.

Bonavista—David Candow.

Twillingate—John Peyton.

Ferryland—Edmund Hanrahan, Ferryland. Martin Williams, Bay Bull.

Placentia and St. Mary's—Francis L. Bradshaw, Placentia. James Murphy, St. Mary's.

Burin—James Moran, M.D., Burin. Josiah Blackburn, Grand Bank.

Fortune Bay—Thomas Birkett, Harbor Breton.

La Poile—Thomas Read.

#### JUSTICES OF THE PEACE.

*For the Island of Newfoundland*—The Judges of the Supreme Court, the Members of the Executive Council, and Peter W. Carter, Thomas Bennett, Charles Fox Bennett, Hon. John Kent, Hon. Ambrose Shea, Thomas Glen, Edmund Hanrahan, Edward D. Shea, James J. Rogerson, Henry J. Kerr.

*Central District*—Stephen Rendell, Hon. John Winter, Hon. James Cormack, John O'Mara, Joseph Peters.

*Northern District*—Benjamin Sweetland, John Peyton, John T. Oakley, John Tilly, James L. Mews, Robert Ollerhead, Alexander Bremner, John G. Skelton, Thomas Hutchings, John Munn, William H. Ridley, David Candow, William S. Green, John Rorke. James L. Prendergast, John Wilcox, James Keeping. Charles Newhook, John Leamon, Philip Levesconte, James Fitzgerald, Joseph Peters, Lewis W. Emerson, Richard Berney, M.D., Israel McNeil, John Lewis, Reuben Bemister, George Skelton, John McCarthy, Michael Howley, Michael Murphy, James Saint, Peter Ward, James A'cock, William Stirling, Joseph J. Pearce, Charles Edmonds, Nathan Norman, William Lang, William Holden, Richard Cormack, Hay Findlater, John Sheehan, William P. Taylor, Gilbert H. Cole, John W. Owen, George W. R. Hierlihy, James N. Leamon, Edward T. Pike, James N. Noonan, Alexander W. Bremner, George C. Rutherford, Patrick Nowlan, James Tarahan, John M. Maddock, Benjamin T. H. Gould, Michael Dwyer, William J. S. Donnelly, James Burden, Arthur Drevar, M.D., Moses Wilshear, James Winser.

*Southern District*—John L. McKie, Francis L. Bradshaw, Thomas E. Gaden, Josiah Blackburn, George Simms, James Murphy, Thomas Reed, Thomas Renouf, Edward Evans, Thomas E. Collett, Francis Berteau, Robert H. Dawe, John Walsh, John O'Neill, Owen Marshall, Richard Marshall, Luke Brown, Clement Mallett, Samuel Howe, William F. Gallop, Patrick Furlong, Thomas Winter, Philip Sorsoliel, Martin Williams, John W. English, Thomas Birkett, John Jordan, Richard McGrath, John Hooper, Charles Furey, Thomas R. Bennett.

*St. George's Bay*—Horatio H. Forrest, Edwin Alexander.

*Labrador*—Nathan Norman, Thomas R. Crockwell, Donald A. Smith, William B. Bendall, Sampson Daw, Thomas G. Larmour, George Goodridge.

LABRADOR COURT—Under Act 26 Vic., Cap. 2.

Judge—Benjamin Sweetland, J. P., Esq.

Bailiff—Jonas Purchase

*R. J. Puseant*

CLERKS OF THE PEACE.

St. John's,—(for Central District)—Robert R. W. Lilly. Harbour Grace—John Fennell. Carbonear—John Mackay. Brigus—John C. Nuttall. Trinity—Robert Bayly. Bonavista—John Lawrence. Twillingate—Aaron A. Pearce. Burin—Edward Morris. Harbour Breton—Samuel Howe.

CORONERS.

St. John's—Joseph Shea, M.D. Harbour Grace, Joseph Peters. Bay de Verds, John Lewis. Trinity, Benjamin Sweetland. Greenspond, Dr. Skelton. Ferryland, John Stephenson. Bay Bulls, Martin Williams. Trinity Bay (South Side), Michael Howley. Bonavista, John Lawrence. Harbor Main, ——. District of Twillingate and Fogo, James Fitzgerald. Harbor Breton, Dr. Drevar. Hermitage Bay, William G. Gallop. Burgeo and La Poile, Dr. Brown.

## POLICE.

General Superintendent of Police Constabulary for Newfoundland—Timothy Mitchell. St. John's—Sergeants, James Kenna and John Nicol.

Harbor Grace—High Constable, Luke Fallon.  
Carbonear—High Constable, Peter McBaie.

## INSPECTORS OF WEIGHTS AND MEASURES.

Thomas S. Dwyer, St. John's. William Meagher, Harbor Grace. Peter McBaie, Carbonear. Nicholas Jeynes, Brigus. John Miffen, Ragged Harbor to Spiller's Cove inclusive, (District of Trinity.) William Harding, District of Burin. Henry Camp, from Pass Island to Cape Le Hune, District of Burgeo. John Lawrence, Bonavista South. Charles Calpin, Bay Roberts. William D. Cross, North Side of Trinity Bay. John G. Lucas, Fogo.

## Educational Institutions.

## ST. JOHN'S ACADEMY.

Directors—Church of England Board—Right Rev. the Lord Bishop, Thomas Bennett, Robert Carter, Hon. the Chief Justice, Hon. Judge Robinson. Head Master—Rev. Joseph F. Phelps; Second Master—Elias Marett.

Roman Catholic Board—Right Rev. Dr. Mullock, Hon. John Kent, Hon. Laurence O'Brien, Hon. Judge Little, Hon. James Cormack. Masters—Rev. M. Walsh, Rev. Dr. Howley, T. Talbot, M. Fenlon, E. Bennett.

General Protestant Board—Walter Grieve, Thomas McMurdo, John B. Bulley, Hon. James O. Fraser, Hon. P. G. Tessier, William Boyd. Master—Adam Scott.

## NEWFOUNDLAND WESLEYAN ACADEMY.

Directors—Rev. John S. Peach, James J. Rogerson. Hon. Nicholas Stabb, Hon. John Bemister, Joseph Woods. Head Master—Alexander Simpson Reid, M.A. Assistant Teachers—Samuel A. Chesley, John C. Moores.

## GRAMMAR SCHOOL.

Directors—Harbour Grace—John Munn, T. Harrison Ridley, Hon. John Hayward, Hugh W. Trspnell, John Ryan, D. Greene, W. J. S. Donnelly. Master—John I. Roddick.

## COMMERCIAL SCHOOLS.

Carbonear.—Commissioners, Rev. W. J. Hoyles, W. Hawker, and John Pearce, Church of England School. Right Rev. Dr. Dalton, Rev. J. O'Connor, and Richard McCarthy, Roman Catholic School. Rev. J. S. Peach, Israel McNeil, Benjamin T. H. Gould, J. F. Apsey, and William Penny, Wesleyan School.

Brigus—Commissioners, James N. Leamon, John C. Nuttall, Thomas Kelly, Rev. R. H. Taylor, James Tarahan. Teacher, William Greene.

ley  
Ro  
E  
ma  
C  
Ste  
E  
ren  
K  
Tea  
K  
Luk  
B  
thol  
T  
Owe  
Duc  
M  
S  
B  
H  
H  
B  
S  
G  
COLO  
P  
His  
of Y  
Most  
consi  
Bish  
land)  
Co  
John  
Treas  
Marri  
Pinse  
Clift,  
Sch  
Rober  
pil Te  
Schoo  
Petty  
Brigu

Bay Roberts—Commissioners, Rev. Martin Blackmore, the Wesleyan Minister for the time being, William S. Green, Isaac Bartlett, Robert Dawe. Teacher, ———.

Broad Cove—Commissioners, Rev. John Waterhouse, Rev. Thomas Fox, John Lewis, William Butt, jr. Teacher, Joseph Thistle.

Old Perlican—Commissioners, Rev. James A. Duke, Jabez Tilley, Stephen K. March. Teacher, William Christian.

Bonavista—Commissioners, Peter Ward, James Saint, John Lawrence. Teacher, Samuel Rowsell.

King's Cove—Commissioners, Rev. M. Scanlan, Michael Murphy. Teacher, William Hartery.

Ferryland—Commissioners, Rev. James Murphy, Robert Carter, Luke Brown, Michael Devereux. Teacher, Patrick Flannery.

Burin—Episcopal Branch, James Bristow, Teacher; Roman Catholic, Michael O'Donnell, Teacher; Wesleyan, ——— Bird, Teacher.

Twillingate—Commissioners, Rev. Thomas Boone, John W. Owens, John Roberts, William Leithbridge. Teacher, John E. Duder.

Muddy Hole—Teacher, John Wheeler.

Seldom-Come-Bye—Teacher, John Pike.

Bay de Verds—Teacher, Patrick Fox.

Harbor Grace—(River Head)—Teacher, Michael Scully.

Harbor Main—Teacher, Cornelius Kennedy.

Bay Bulls—Teacher, Terrence Morrissey.

St. Mary's—Teacher, Patrick Walsh.

Great Placentia—Teacher, Francis Curtis.

COLONIAL AND CONTINENTAL CHURCH SOCIETY—[Incorporated 1862.]

Patron—Her Most Gracious Majesty the Queen. Vice Patrons—His Grace the Archbishop of Canterbury, His Grace the Archbishop of York, His Grace the Archbishop of Armagh. President—The Most Hon. the Marquis of Cholmondeley, and 76 Vice-Presidents, consisting of Peers of the United Kingdom, English and Colonial Bishops, Colonial Governors, (including the Governor of Newfoundland) Members of Parliament, &c., &c.

Corresponding Committee in Newfoundland—President, Hon. John Winter, M.D.; Vice-President, Hon. Frederick B. T. Carter; Treasurer, E. L. Jarvis; Inspector and Organizing Master, J. W. Marriott; Secretary, James Bayly; Rev. T. M. Wood, Hon. R. J. Pinsent, Hon. J. S. Clift, John Bowring, D. W. Prowse, Theodore Clift, Archibald Emerson. Bankers, Union Bank.

School Teachers—St. John's, (Central School) Mr. Marriott and Robert Lawrence, Boys; Miss Connell, Girls; Training Pupil Teachers of the Society, Misses Saunders and Mullings; Infants' School, Miss Anderson. Belloram, Rev. J. and Mrs. Marshall. Petty Harbor, Mr. and Mrs. Bishop. Portugal Cove, Mr. Ward. Brigus, Mr. and Mrs. Mills. Port-de-Grave, Mr. and Mrs. Glad-

dock and Miss Andrews. Spaniards Bay, Mr. and Mrs. Earle. Bishop's Cove, Miss Burke. Harbor Grace, Mr. and Mrs. Gardner. Heart's Content, Miss Winter (temporary). Trinity, Mr. Collis and Miss Lockyer. Bonavista, Mr. and Mrs. Lawrence. Salvage, Mr. and Mrs. Kelligrews. Greenspond, Mr. and Mrs. H. Lind. Swain's Island, Mr. Edward Bishop. Twillingate, Mr. Crosby. Fogo, Mrs. Plomer.

WESLEYAN SCHOOL AND AGENCY SOCIETY.

Committee—Rev. J. S. Peach, Chairman and Treasurer; Rev. J. Dove, Secretary; the Ministers of the Newfoundland District, and John Munn, James J. Rogerson, John Bulley, sr., Joseph Woods, Israel McNeil, James N. Leamon.

Teachers—Pouch Cove, Joseph Baggs. Carbonear, James Had-don. Cupids, Francois Skeans. Port de Grave, John A. Brown. Broad Cove, Joseph Thistle. Old Perlican, William Christian, Catalina, Miss Sne'grove. Flat Island, Joseph R. Parsons. Sound Island, Charles Downs. Green's Harbor, Simeon Read. Garia, Joseph Troke. Western Point, Henry Garland.

PRESBYTERIAN (ST. ANDREW'S) SCHOOL, ST. JOHN'S.

Committee—John Boyd, Secretary; Gilbert Browning, John B. McLea, Alexander McKay, Andrew Thompson. Teacher—Robert Scott, M.A.

BOARDS UNDER EDUCATION ACT.

St. John's—Ven. Archdeacon Kelly, Rev. John Prince, Rev. Moses Harvey, Rev. G. M. Johnson, Rev. Thomas M. Wood, Rev. D. McRae, Hon. Nicholas Stabb, William H. Mare, Hon. James S. Clift, Hon. John Winter, M.D., W. V. Whiteway.

Harbor Grace—Rev. Bertram Jones, Rev. John S. Phinney, Rev. Alexander Ross, T. Harrison Ridley, Hon. John Hayward, Rev. William Meek, (Island Cove), and Johnstone F. Burrows.

Carbonear—Rev. John S. Peach, Rev. William J. Hoyles, and John Rorke, Edward Pike, James Forward, jr., Israel McNeil, and Benjamin Gould.

Bay Roberts—Rev. Martin Blackmore, the Wesleyan Minister for the time being, William S. Green, Isaac Bartlett, Robert Dawe.

Port de Grave—Rev. James C. Harvey, Dr. Brown, J. M. Maddock, John Andrews, Thomas Corbin.

Brigus—Rev. William E. Shenstone, Rev. Robert H. Taylor, and Christopher Norman, James Wilcox, Jonathan Percey, John Bartlett, James N. Leamon.

Bay-de-Verds—Rev. John Waterhouse, Rev. Oliver Rouse, Rev. T. Fox, and John Lewis.

Trinity Bay North—Rev. Benjamin Smith, Rev. George Forsey, and Benjamin Sweetland, Robert Bayly, Alexander Bremner, jr., and Gilbert H. Cole.

Trinity Bay West—Rev. George Gardner, and Robert Ollerhead, James Moore, Robert Rockwood, Heart's Content; Charles New-

hoo  
Ben  
T  
Joh  
T  
and  
Till  
B  
Geo  
Edw  
B  
and  
Dav  
B  
Hall  
Can  
F  
Find  
(Bar  
Tw  
Peyt  
Darr  
Mc  
ford,  
John  
Fe  
Jame  
liam  
Pla  
Georg  
Jame  
Bu  
teau,  
Lar  
Jame  
Gra  
Jame  
Fox  
Marsh  
Gallo  
Bur  
Hunt,  
La  
Thom  
and P  
Cha  
John  
Pro

hook, New Harbor; James Wiseman, Heart's Delight; Reuben Bemister, New Perlican; Elias Warren, Joseph Harnum.

Trinity Bay South—Rev. James A. Duke, Rev. O. Rouse, Rev. John M. Pike, and James Mews, Jabez Tilley, H. T. Crawford.

Trinity Bay East—Rev. William Netten, Rev. Charles Comben, and Alexander Bremner, William Norman, John Daymond, Robert Tilley, jr., and Benjamin Snelgrove.

Bonavista Bay North—Rev. W. J. Milner, and John T. Oakley, George Skelton, M.D., James Noonan, Darius Blandford, Charles Edwards.

Bonavista Bay South—Rev. A. E. C. Bayly, Rev. James Dove, and James Saint, John G. Skelton, William Brown, Stephen Abbott David Candow.

Bonavista Bay West—Rev. William Kirby, John Shears, Open Hall; and Samuel Coffin, William Hancock, jr., and David Candow, jr.

Fogo—Rev. A. M. Oakley, Rev. Charles Ladner, and Hay Findlater, Peter Carter, Henry Simons, James Rolls, — Williams, (Bar'd Island Harbor).

Twillingate—Rev. Thomas Boone, Rev. John Goodison, and John Peyton, Charles Edmonds, William Lethbridge, and Rev. Josiah Darrell, Herring Neck.

Moreton's Harbor—Rev. George Hooper, Rev. Henry L. Cranford, and Josiah Manuel, Exploits; Mark Osmond, Samuel Britt, John Taylor.

Ferryland—Rev. John M. Noel, Robert Carter, James H. Carter, James Carter, John Morry, Peter Winser, Daniel H. Winser, William T. S. Carter.

Placentia—Rev. John Kingwell, James Butler, Thomas E. Collett, George H. Bennett, Thomas Collins, (Oderin), James Hollett, and James Chalmers.

Burin—Rev. Thomas Harris, Rev. William Rozier, Francis Ber-teau, Owen Pine, Richard Willie, George Goddard, and Wm. Paul.

Lamaline—Rev. A. E. Gabriel, George H. Evans, George Cake, James Pitman, George Bust, and Thomas Laskey.

Grand Bank—Rev. S. T. Teed, Edward Evans, Josiah Blackburn, James Hickman, and Jonathan Snook.

Fortune Bay—Rev. William K. White, Rev. E. Colley, Rev. John Marshall, Samuel Howe, Arthur Drevar, Clement Mallett, W. J. Gallop, Thomas R. Bennett.

Burgeo—Rev. John Cunningham, Rev. Edward Colley, George Hunt, M.D., William Scott, Stephen Vatcher.

La Poile—Rev. George S. Chamberlain, Rev. Joseph Pascoe, Thomas Read, William Thomas, Thomas Anderson, Philip Sorsoliel, and Philip Gruchy.

Channel—Rev. W. W. LeGallais, Rev. Isaac Howie, John Gillam John Pike, William Gillam, John LeBrook, and Edward Genge.

Protestant Inspector of Schools—John Haddon.



## ROMAN CATHOLIC SCHOOLS.

St. John's—Orphan Asylum, (Boys). Teachers—Michael O'Donnell, Francis Grace; Industrial Department, Bartholomew Connors.

St. Patrick's, River Head—Teacher—John Dalton.

Harbor Grace—St. Patrick's Free School, (Boys). Teacher—Hamilton.

## BOARDS UNDER EDUCATION ACT.

St. John's—Right Rev. John T. Mullock, D.D.; Hon. John Kent, Hon. Laurence O'Brien, Richard Howley, Hon. James Cormack, Hon. Robert Kent, and Edward St. John.

Harbor Grace, Carbonear, Bay-de-Verds. and Trinity South and West—Right Rev. Dr. Dalton, John McCarthy, Patrick Devereux, James L. Prendergast, Michael Bolger, W. J. S. Donnelly, and Thomas Greene.

Brigus—Rev. E. O'Keefe, Patrick Nowlan, and Richard Cormack.

Harbor Maine—Very Rev. Kyrán Walsh, V.G., and William Holden, Richard Woodford, Charles Furey, and William Woodford.

Trinity Bay North—Right Rev. Dr. Dalton, Rev. J. Scanlan, and John Murphy, P. Murphy, Robert Lawler.

Bonavista Bay South—Right Rev. Dr. Dalton, Rev. M. Scanlan, and William Hartery, James Connors, Michael Murphy, John Ryan, and John Murphy.

Fogo—Right Rev. Dr. Dalton, Rev. James Brown, and J. Fitzgerald, Miles Burke, (Joe Bat's Arm.) William Green, Daniel Bryan, (Tilton Harbor.)

Ferryland—Rev. James Murphy, Rev. William Forristal, and Henry O'Neil, Philip Jackman, Nicholas Power, Richard Cashin, Gerald Jackman.

Bay Bulls—Rev. P. Cleary, and Martin Williams, Martin Driscoll, Michael Driscoll, J. Blackler, Michael Carey, (Witless Bay) and Thomas Gatherall (Balline).

Great Placentia—Rev. E. Condon, F. L. Bradshaw, Maurice Power, Thomas Kielley, John Sinnott, Francis Mooney, Samuel Collins.

Little Placentia—Rev. Pelagius Nowlan, and Thomas Freeman, Alexander Burke, John Rielley, and Thomas Keits.

Placentia West—Rev. James Walsh, and Thomas Sullivan, Timothy Connors, Daniel Ryan, and Dennis Ryan.

St. Mary's—Rev. John Ryan, Rev. J. Ryan, and J. Walsh, John Grace, William Burke, Michael Fagan, James Murphy, and John Whelan.

Trepassey—Rev. John Ryan, and James Waddleton, John Tobin, James Devereux, John Neill, jr., and John Hewett.

Burin—Rev. John Cullen, Patrick Morris, Richard Marshall, John Power, Matthew Marshall, Edward Morris, and William Fitzpatrick.

Fortune Bay—Rev. E. Brennan, Rev. John Cullen, and P. Burke, W. Burke, P. Burke, jr., T. Kinshella, and T. Hearne.

Roman Catholic Inspector of Schools—Michael J. Kelly.

## Ecclesiastical Department.

### CHURCH OF ENGLAND.

The Right Rev. EDWARD FIELD, D.D., Lord Bishop of Newfoundland. Venerable James B. Kelly, M.A., Archdeacon of Newfoundland and Labrador, and Ecclesiastical Commissary.

Deanery of Avalon—Ven. Archdeacon Kelly, M.A., Cathedral; Rev. G. M. Johnson, Cathedral; Rev. T. M. Wood, Rural Dean, St. Thomas', St. John's; Rev. C. S. Medley, B.A., St. Mary's, St. John's. Rev. R. M. Johnson, St. John's Outharbors. Rev. Benjamin Fleet, Foxtrap. Rev. ———, Topsail. Rev. ———, Portugal Cove.

Deanery of Conception Bay—Rev. M. Blackmore, (Rural Dean) Rev. W. C. Shears, Bay Roberts. Rev. Jamea C. Harvey, Port-de-Grave. Rev. W. J. Hoyles, Carbonear. Rev. Bertram Jones, Harbor Grace. Rev. Oliver Rouse, Bay de Verd. Rev. R. H. Taylor, Brigus. Rev. William F. Meek, Island Cove.

Deanery of Trinity Bay—Rev. H. Petley, M.A., New Harbor: Rev. George Gardner, Heart's Content. Rev. William Netten, Catalina. Rev. Benjamin Smith, (Rural Dean) Trinity.

Deanery of Bonavista Bay—Rev. A. E. C. Bayly (Rural Dean) Bonavista. Rev. W. Kirby, King's Cove. Rev. C. R. West, Salvage. Rev. W. J. Milner, Greenspond. Rev. John G. Cragg, Pinchard's Island.

Deanery of Notre Dame Bay—Rev. Thomas Boone, (Rural Dean) Twillingate. Rev. Josiah Darrell, Herring Neck. Rev. A. M. Oakley, Fogo. Rev. George H. Hooper, Moreton's Harbor. Rev. R. Temple, White Bay.

Deanery of Placentia Bay—Rev. William Rozier, Burin. Rev. J. Kingwell, Harbor Buffett. Rev. A. E. Gabriel, Lamaline.

Deanery of Fortune Bay—Rev. George S. Chamberlain, LaPoile. Rev. Henry Lind, St. George's Bay. Rev. Edward Colley, Hermitage Bay. Rev. John Cunningham, Burgeo. Rev. W. W. LeGalais, Channel. Rev. John Marshall, Belloram. Rev. William K. White, (Rural Dean) Harbor Breton. Rev. Ulric Rule, Bay of Islands.

Labrador—Rev. R. Dobie, Fortune. Rev. George Hutchinson, B. A., Battle Harbor:

Theological Institution—Principal, Ven. Archdeacon Kelly, M.A. Students—Epiphanius Wilson, Theophilus Netten, Henry M. Skinner, John Lockward, Walter Smith, Christopher Meek, John Bishop.

Newfoundland Church Society—Patron—His Excellency the Governor. President—The Right Rev. the Lord Bishop. Vice-Presidents—The Ven. the Archdeacon, the Revds. the Rural Deans. Treasurer—William H. Mare. Secretary—Rev. G. M. Johnson. Committee—John Tunbridge, J. C. Withers, W. V. Whiteway, Q. C., Hon. F. B. T. Carter, Q. C., C. Crowdy, M. D., G. T. Rendell, Hon. the Chief Justice, H. LeMessurier, Hon. John Winter, M. D., J. H. Warren, H. K. Dickinson, Hon. Judge Robinson, T. Bennett, J. P., G. J. Hayward.

---

 ROMAN CATHOLIC CHURCH.
 

---

Diocese of St. John's—The Right Rev. JOHN THOMAS MULLOCK, D.D., Lord Bishop of St. John's.

Very Rev. P. Cleary, Dean.

Very Rev. K. Walsh, Vicar-General.

Very Rev. A. Belanger, Vicar-General.

St. John's Cathedral—Right Rev. J. T. Mullock, D.D., Rev. Jeremiah O'Donnell, Rev. John Vereker, Rev. David O'Donnell.

St. Patrick's (River Head)—Rev. J. Scott.

St. John's College—Rev. Michael Walsh, Rev. Dr. Howley.

Portugal Cove—Rev. Thomas O'Connor.

Torbay—Rev. Edward Troy.

Harbor Maine—Very Rev. Kyran Walsh, V.G., Rev. P. O'Donnell.

Witless Bay—Very Rev. Dean Cleary, Rev. J. Conway.

Ferryland—Rev. James Murphy.

Fermeuse—Rev. William Forristal.

St. Mary's—Rev. John Ryan, and Rev. J. Ryan, jr.

Trepassey—Rev. T. Hennebury.

Placentia—Rev. E. Condon.

Little Placentia—Rev. Pelagius Nowlan.

Oliver's Cove, St. Kyran's—Rev. James Walsh, Rev. Thomas McGrath.

Burin—Rev. R. O'Donnell, Rev. John Cullen, Rev. M. Berny.

Harbor Breton—Rev. Robert Brennan.

St. Lawrence—Rev. Richard Dunphy.

Brigus—Rev. E. O'Keefe.

St. George's Bay—Very Rev. Alexander Belanger, V.G.

French Shore—Served annually by Priests from France.

College of St. Bonaventure, St. John's—Rev. M. Walsh, Principal and Professor. Rev. Dr. Howley, Director; Thomas Talbot, Professor of Classics and Belles Letters; M. Fenlon, Professor of Science; E. Bennett, Professor of Music.

Convents in the Diocese of St. John's, 14—St. John's, 4; Brigus, 1; Harbor Main, 1; St. Mary's, 1; Witless Bay, 1; Ferryland, 1; Fermeuse, 1; Burin, 1; Placentia, 1; Torbay, 1; Petty Harbor, 1.

St. Michael's Female Orphanage, Belvedere—Orphans, between 60 and 70.

One House of Mercy, Belvedere, for girls out of place.

St. Clare's Boarding School, under care of Sisters of Mercy Convent.

## DIOCESE OF HARBOR GRACE.

The Right Rev. JOHN DALTON, D.D., Lord Bishop of Harbor Grace. Rev. John Walsh, Very Rev. H. Carfagnini.

Bay-de-Verds—Rev. B. Duffy.

King's Cove—Rev. Matthew Scanlan.

Carbonear—Rev. John O'Connor.  
 Fogo—Rev. J. Brown.  
 Bonavista—Rev. J. Cumming.  
 Convents—Harbor Grace, 1 ; Carbonear, 1.

CONGREGATIONAL CHURCH.

The Rev. JAMES HOWELL, Queen's Road Chapel, St. John's.

WESLEYAN METHODIST CHURCH.

The Rev. JOHN S. PEACH, Chairman of the District. The Rev. James Dove, Financial Secretary.

St. John's—Rev. John Prince, Rev. Alfred W. Turner, Rev. Joseph Guetz.

Harbor Grace—Rev. John S. Phinney.

Carbonear—Rev. John S. Peach, Rev. Joseph Todhunter.

Brigus—Rev. William E. Shenstone.

Bay Roberts—Rev. John Reay.

Blackhead—Rev. John Waterhouse.

Island Cove—Rev. Thomas Fox.

Old Perlican—Rev. James A. Duke.

Hants Harbor—Rev. John M. Pike.

Trinity—Rev. George Forsey.

Bonavista—Rev. James Dove.

Catalina—Rev. Charles Combén.

Twillingate—Rev. John Goodison.

Burin—Rev. Thomas Harris.

Grand Bank—Rev. S. T. Teed.

*Missions of Conference.*

Labrador—Supplied during Summer by the Rev. J. Todhunter.

Petites—Rev. Joseph Pascoe.

Channel— — — —

Exploits, Burnt Island—Rev. Henry L. Cranford.

Fogo—Rev. Charles Ladner.

Greenpond—Rev. Isaac Howie.

Harbor Breton—Rev. Thomas Allen.

CHURCH OF SCOTLAND.

The Rev. DONALD McRAE, St. Andrew's Church, St. John's.

FREE PRESBYTERIAN CHURCH.

The Rev. MOSES HARVEY, St. John's.

The Rev. Alexander Ross, Harbor Grace.

LAYMEN LICENSED TO CELEBRATE MARRIAGE.

Charles Harris, Gooseberry Island. George Goodridge, Labrador

---

## Banks.

### UNION BANK OF NEWFOUNDLAND.

Directors—Hon. L. O'Brien, Robert Grieve, Robert Alexander, Robert Thorburn, A. W. Harvey.

John W. Smith, Manager. Randal Greene, Accountant and Teller. Charles S. Pinsent and Alfred G. Smith, Clerks. Hon. R. J. Pinsent, Q.C., Standing Counsel and Solicitor.

Discount Days—Mondays and Thursdays, from 12½ o'clock.

Hours of Business—From 10 a.m., to 3 p.m.

### COMMERCIAL BANK OF NEWFOUNDLAND.

Directors—Stephen Rendell, John Bowring, John B. McLea, Frederick J. Wyatt, James Goodfellow.

Robert Brown, Manager. Henry Cooke, Teller. John W. Hayward, Clerk. William B. Dryer, Clerk and Messenger. Hon. F. B. T. Carter, Q.C., Standing Counsel and Solicitor.

Discount Days—Tuesdays and Fridays, from 12½ to 1½ o'clock.

Hours of Business—From 10 a.m., to 3 p.m.

---

## Chamber of Commerce, St. John's.

Hon. James S. Clift, President; Hon. P. G. Tessier and John Bowring, Vice-Presidents; Henry K. Dickinson, Secretary and Treasurer; Stephen Rendell, Robert Grieve, Augustus W. Harvey, Robert Alexander, Frederick J. Wyatt, Robert Thorburn, John B. McLea, Thomas W. Stabb, Edwin Duder.

Manager of Commercial Rooms—John B. Bulley.

---

## Notaries Public.

St. John's—Hon. George H. Emerson, Robert Prowse, George F. Bown, Hon. Frederick B. T. Carter, Robert R. W. Lilly, Hon. Edward Morris, George J. Hogsett, William H. Marc, Matthew W. Walbank, Thomas J. Kough, William V. Whiteway, Hon. Nicholas Stabb, Matthew H. Warren, Hon. Robert J. Pinsent, D. W. Prowse, Richard B. Holden, Samuel G. Archibald, John B. Bulley, Augustus O. Hayward, Henry K. Dickinson.

Harbor Grace—Hon. John Hayward, Andrew Drysdale, Henry A. Clift, Lewis W. Emerson. Carbonear—Henry C. Watts, Israel McNeil. Twillingate—John Peyton. Brigus—William S. Mills. Bay Roberts, George W. R. Hierlihy. Burin—Francis Berteau. Ferryland—John Stephenson.

---

## Foreign Consulates.

Portugal—Charles F. Bennett, Consul General for Newfoundland. Vice-Consuls—Thomas R. Smith, St. John's; John Munn, Harbor Grace; William Junott, Burin; Charles Edmonds, Twillingate and Fogo; T. Howe, Harbor Breton and Gaultois.

Spain—Don Hipolito de Uriarte, Consul of Newfoundland. Vice-Consuls—Charles F. Ansell, St. John's; T. Harrison Ridley, Harbor Grace. Consular Agents—John Peyton, Twillingate; James L. Noonan, Greenspond; Dr. Hay Findlater, Fogo; Gilbert Humphrey Cole, Trinity; Philip Sorsollel, Rose Blanche; Philip Hubert, Harbor Breton; Philip J. Gruchy, La Poile; Charles Middleton Burgeo; William Gallop, Gaultois.

Prussia—Robert Prowse, Consul for St. John's; D. W. Prowse, Consular Agent.

Hamburgh—Robert Prowse, Consul; D. W. Prowse, Consular Agent.

France—J. C. Toussaint, Vice-Consul for Newfoundland.

Denmark—Hon. John Kent, Consul for Newfoundland.

Italy—James Bayly, Consular Agent for Newfoundland.

United States of America—Thomas N. Molloy, Vice-Consul for Newfoundland.

Sweden and Norway—Robert H. Prowse, Vice-Consul for Newfoundland.

### Military Establishment.

HEAD QUARTERS, }  
St. John's, Newfoundland. }

*General Staff*—Commanding the Troops—Colonel Fitz William Walker, Royal Canadian Rifles. Fort Adjutant—Lieutenant W. Gillmor, Royal Canadian Rifles. Acting Garrison Chaplains—Rev. T. M. Wood, Church of England; Rev. J. O'Donnell, Roman Catholic; Rev. D. McRae, Presbyterian. Garrison Sergeant-Major and Military Clerk, 3d Class, Philip Molloy.

*Royal Engineer Department*—Commanding Royal Engineer, Brevet-Lieut.-Colonel C. B. P., N. H. Nugent. Clerk of Works, R. Lear, 2nd Class. Clerk (temporary) L. Hammer. Office Messenger, Pensioner G. Clarke.

*Commissariat Department*—Assistant Commissary General, H. Moore. Commissariat Issuer, Sergeant Collins, R.C.R. Clerk, (temporary) C. F. Witell. Office Messenger, an Orderly from the Garrison.

*Military Store and Barrack Departments*—Assistant Superintendent of Stores and Acting Barrack Master, J. Tunbridge. Deputy Assistant Superintendent of Stores, N. Hammer. Barrack Sergeants, H. Hawkins, P. O'Connor. Storehouse man, F. Scott. Warder, W. Hammond. Wharfinger (Queen's Wharf) Pensioner W. Francis. Office Messenger, Pensioner A. Devanna.

*Royal Artillery, 8th Battery, 10th Brigade*—Brevet Major C. Wright, Commanding. Lieutenants, G. J. Gillies, D. N. Taylor. Assistant Surgeon, A. K. Rickards (in medical charge of Troops). District Clerk, G. Scarlet.

*Detachment Royal Canadian Rifles*—Bt.-Col. F. Walker, Commanding. Capts., A. B. Mitchell, J. T. J. Cobham: Lieuts., W. Gill-

mor, W. Cavanagh. Ensigns, W. E. Harness, A. J. Arnott. Assistant Surgeon, S. Robertson, M.D. Acting Pay Master, W. Cavanagh. Corps of Armourers, Sergeant F. W. Kilpatrick. Army Hospital Corps, Sergeant J. Parker.

*Garrison Library*—In the Military Store Yard. Librarian, a non-commissioned Officer of the Garrison.

*Posts and Works*—St. John's, (North Side)—Forts Townsend and William. Signal Hill—(including Barracks at these posts) Storehouses, Magazine, and Armoury; Queen's, Waldegrave, Chain Rock and Quidi Vidi Batteries; Military Hospital; Engineer House, Office, Workshops and Yard; Commissariat House, Office, Fuel Yard and Bakery; Military Store Houses, Offices and Yard, Queen's Wharf; Departmental Depots; Rifle Range at Neagle's Hill, South Side, - Fort Amherst and Magazine. Fort Frederic dismantled.

A Gun is fired from the Queen's Battery as follows:—

At 12 o'clock noon, throughout the year. From the 1st May to the 30th September inclusive, at 9 p.m. From the 1st October to the 30th April inclusive, at 8.30 p.m.

A Fog Gun is fired from Fort Amherst every hour, from Sun rise to Sun set, during foggy weather. Likewise, two Guns for Vessels when in distress at Sea.

When Practice is carried on by the Royal Artillery, a flag is hoisted as a signal at Fort Amherst.

The Blee-house, at Signal Hill, is the Station from which all vessels entering the port of St. John's are signalled.

## Newfoundland Rifle Volunteers.

*Commander-in-Chief*—His Excellency ANTHONY MUSGRAVE, ESQUIRE, &c., &c.

*Deputy-Adjutant-General*—Major Charles Mesham, late 62d Regiment.

ST. JOHN'S VOLUNTEER BATTALION—4 COMPANIES.

*Major*—Henry Renouf.

*Captains*—(No. 2 Company) W. Walbank. (No. 1) H. J. Stabb. (No. 4) R. J. Parsons. (No. 3) T. W. Stabb.

*Lieutenants*—No. 2 Company) Thomas R. Smith. (No. 1) E. M. J. Delaney. (No. 4) Henry Dryer. (No. 3) Nicholas S. Stabb.

*Ensigns*—(No. 2 Company) John B. McLea, Commanding Artillery Section. (No. 1) C. S. Piusent, Artillery Section. (No. 4) W. O. Wood. (No. 3) C. Bowring. (No. 1) T. Brown. (No. 2.) W. Thorburn.

*Adjutant*—Captain Robert Dicks.

*Surgeon*—James Fraser, M.D.

HARBOR GRACE COMPANY.

*Captain*—Hon. John Hayward: *Lieutenant*—Henry Moore. *Ensign* Robert Munn.

Cn  
Stati

O,

1856  
1857  
1858  
1859  
1860

1856  
1857  
1858  
1859  
1860

Shew

Yrs  
1842  
1843  
1844  
1845  
1846  
1847  
1848  
1849  
1850  
1851  
1852  
1853

Sh

Naval.

Commander-in-Chief on the West India and North American Station--Vice-Admiral Sir James Hope, K.C.B.

Revenue and Expenditure

Of the Government of Newfoundland, from 1856 to 1865.

	Revenue.		Expenditure.			Revenue.		Expenditure.	
1856	118,831	15 8	105,845	16 5	1861	90,013	10 7	126,753	5 9
1857	149,324	9 11	116,743	13 0	1862	116,929	17 1	138,058	17 6
1858	141,128	4 3	173,955	8 9	1863	113,034	1 9	115,225	4 6
1859	124,799	2 6	114,599	1 2	1864	125,158	19 0	125,159	6 0
1860	133,608	1 7	120,728	4 2	1865	130,417	10 6	156,454	9 3

Value of Imports and Exports,

From the Years 1855 to 1865.

	Imports.		Exports.			Imports.		Exports.	
1856	£1,271,604		£1,338,797		1861	£1,152,857		£1,092,551	
1857	1,413,432		1,651,171		1862	1,017,082		1,171,723	
1858	1,172,862		1,318,836		1863	1,077,272		1,233,353	
1859	1,324,136		1,357,113		1864	1,067,062		1,111,330	
1860	1,251,128		1,271,712		1865	1,104,078		1,144,368	

Table

Shewing the Quantity and Value of Fish (dried) exported from Newfoundland for the Years 1842 to 1865, inclusive.

Yrs.	Qtls.	Value.	Yrs.	Qtls.	Value.
1842	1,007,980	561,950	1854	774,118	517,818
1843	936,202	532,194	1855	1,107,388	680,283
1844	852,162	482,480	1856	1,268,334	789,124
1845	1,500,333	536,994	1857	1,392,322	1,006,129
1846	879,005		1858	1,038,089	765,101
1847	847,973	489,910	1859	1,105,793	894,966
1848	920,363	491,924	1860	1,133,544	846,238
1849	1,175,167	588,728	1861	1,021,720	668,263
1850	1,089,182	532,969	1862	1,074,289	752,002
1851	1,017,674	493,014	1863	811,777	671,275
1852	973,731	463,741	1864	849,339	798,610
1853	922,718	561,100	1865	801,349	706,352

Ship's Owned and Registered in Newfoundland.

Number of Vessels	.....	.....	1,486
Tonnage	.....	.....	87,033



### Table of Customs Duties,

*According to Revenue Act passed 23d March, 1866.*

Ale, Porter, Cider, and Perry, the gallon	\$0 08
Apples, the barrel	0 30
Bacon and Hams, Smoked Beef and Sausages, the cwt.	1 00
Beef and Pigs' Heads, salted and cured, the barrel of 200 lbs	0 50
Biscuit or Bread, the cwt.	0 06
Butter, the cwt.	0 70
Cheese, the cwt.	1 25
Chocolate and Cocoa, the lb.	0 02
Cigars, the M.	2 64
Coffee, the lb.	0 02
Coals, imported or brought into the Port of St. John's the ton	0 25
Confectionary, the cwt.	3 30
Feathers and Feather Beds, the lb.	0 02
Fish—salted, dried and pickled, being of Foreign catch and cure, for every cwt. imported	1 32
Flour, the barrel	0 36
Fruit—dried, the lb.	0 02
“ Other descriptions, except Apples, the \$100	5 00
Lumber, the M.	0 60
Molasses, the gallon	0 05
Oatmeal and Indian Meal, the barrel	0 12
Pork, the barrel of 200 lbs.	0 70
Salt, the ton	0 12
Shingles, the M.	0 20
Shooks and Staves—manufactured and dressed, the \$100	11 00
Spirits, viz. :—Brandy or other Spirits, not herein de- fined or enumerated, and not exceeding the strength of proof by Sykes's Hydrometer, and so in propor- tion for any greater strength than the strength of proof, the gallon	1 20
All other Spirits, of greater strength than forty-three over proof, shall be deemed to be undefined Spirits, and subject to duty accordingly.	
Gin and Rum, not exceeding the strength of proof by Syke's Hydrometer, and so in proportion for any greater strength than the strength of proof, the gal.	0 60
Whiskey, not exceeding the strength of proof by Sykes's Hydrometer, and so in proportion for any greater strength than the strength of proof, the gallon	0 80
Cordials, Shrub and other Spirits, being sweetened or mixed so that the degree of strength cannot be as- certained as aforesaid, the gallon	0 50
Sugar—Loaf and Refined, the cwt.	3 20
“ Unrefined, the cwt.	1 98
“ Bastard, the cwt.	2 40
Tea—Souchong, Congou and Bohea, the lb.	0 08
“ All other sorts, the lb.	0 10
Tobacco—Manufactured and Leaf, the lb.	0 07

Tobacco Stems, the cwt.	\$0 50
Timber, the ton	0 30
Vinegar, the gallon	0 06
Wines, viz.,—Port, Madeira, Hock, Burgundy and Champagne, the gallon	1 00
Sheriy, 12½ per cent <i>ad valorem</i> , and, the gallon	0 72
Spanish Red, Sicilian, Figueira Red, Lisbon Common, Manzanilla, Malaga, Cape and Claret, the gallon	0 24
All other Wines, 12½ per cent. <i>ad valorem</i> , and, the gal.	0 60
Anchor and Chain Cables, Copper and Composition Metal for ships, viz.: Bar, Bolt, and Sheathing Nails; Iron, viz.: Bar, Bolt, Sheathing and Sheer, Wrought Nails; Cordage and Hemp Cables; Oakum; Canvass; Corks and Corkwood; Fishing Tackle; Pitch, Tar, Rosin, Raw Turpentine; Staves undressed; Masts and Spars; Barley, Oats, Rice, Indian Corn, Pease, Bran, Medicines, the \$100	5 50
Goods, Wares and Merchandise, not otherwise enumerated, described or charged with Duty in this Act, and not otherwise exempt, the \$100	11 00
Packages in which Dry Goods are imported, the \$100	11 00

LOCAL DISTILLATION.

Rum, not exceeding the strength of proof by Sykes's Hydrometer, and so in proportion for any greater strength than the strength of proof, the gallon	0 40
Brandy, Gin, or other Spirits, not herein defined or enumerated, and not exceeding the strength of proof by Sykes's Hydrometer, and so in proportion for any greater strength than the strength of proof, the gallon	0 48

TABLE OF EXEMPTIONS.

Printing Presses, Printing Paper, (Royal and Demy) Types, and all other Printing Materials
Printed Books, Pamphlets, Maps and Charts
Coin and Bullion, Hemp, Flax, Tow
Plants, Trees and Shrubs
Limestone
Specimens illustrative of Natural History
Works of Art, viz.: Engravings, Paintings and Statuary, not intended for sale
Articles imported for Religious purposes, and not intended for sale
Manures of all kinds
Arms, Clothing and Provisions for Her Majesty's Land and Sea Forces
Passengers' Baggage, Household Furniture, and Working Tools and Implements, used and in the use of persons arriving in the Island
Refuse Rice, Seeds for Agricultural purposes
Vegetables of all sorts
Hides, or pieces of Hides, not tanned, curried or dressed
Animals of all kinds

Coals, (except when imported or brought into St. John's)  
 Poultry and Fresh Meats  
 Articles of every description, imported for the use of the Governor  
 Donations of Clothing, specially imported for distribution, gratuitously, by any Charitable Society  
 Cotton Yarn  
 Pig Iron, Coke  
 Bark for Tanning Leather  
 Sulphuric Acid, when used for the manufacture of Manure  
 Materials for Sheathing the bottoms of Vessels, such as Zinc, Copper, and Composition Metal, together with Nails, Paper or Felt, which may be used under the same, shall be free and exempt from duty when imported in the Vessel on which they are intended to be used, and entered as Ship's Stores; such Sheathing and Materials to be so used before the Ship again leaves port, or the same shall be entered for duty in the ordinary way  
 Fish, British caught and cured.  
 Twines, to be used for manufacturing Nets in this Colony  
 Dye Stuffs

It shall not be lawful for any importer of Fish, salted, dried or pickled, not exempted from duty by any of the provisions of this Act, to Warehouse the same in any of the Ports of this Colony or its Dependencies, without the payment of the Duty hereinbefore imposed; and the provisions of any Act of this Colony with regard to the Warehousing of Goods on the first entry thereof, or to the allowance of drawbacks upon exportation, shall not, in either case, apply, or be construed to apply, to such Fish.

All Yachts sailing under Warrant of the Lords of the Admiralty, or belonging to the Royal Yacht Club, shall be exempted, on view of the said Warrant, from payment of all Local Duties whatsoever.

---



---

QUEEN'S PRINTER.

John Collier Withers, Esquire.

NEWSPAPERS PUBLISHED IN THE COLONY.

*Courier*—Published every Wednesday and Saturday morning.

*Daily News*—Published every morning, Sundays excepted.

*Morning Chronicle*—Published every morning, Sundays and Holidays excepted.

*Newfoundlander*—Published every Monday and Thursday morning.

*Newfoundland Express*—Published every Tuesday, Thursday and Saturday morning.

*Public Ledger*—Published every Tuesday and Friday morning.

*Patriot*—Published every Tuesday afternoon.

*Royal Gazette*—Published every Tuesday.

*Standard* (Harbor Grace)—Published every Wednesday morning.

*Times*—Published every Wednesday and Saturday morning.

*Telegraph*—Published every Wednesday morning.

*Weekly Express*—Published every Tuesday evening.

---

**ST. JOHN'S AND NEWFOUNDLAND AUXILIARY BIBLE SOCIETY.**


---

His Excellency the Governor, Patron. Hon. Nicholas Stabb, President. Stephen Rendell, William Boyd, James N. Fraser, M.D., James Pitts, Hon. John Winter, Vice-Presidents. Robert Brown, Treasurer. Rev. Moses Harvey and John B. Bulley, Secretaries. Committee—Rev. John Prince Rev. Donald McRae, Rev. James Howell, Rev. A. W. Turner, Hon. P. G. Tesler, Hon. J. O. Fraser, Hon. J. Bemister, N. Mudge, James Bayly, E. L. Jarvis, Alexander Whiteford, Joseph Woods, James Scaton, John Woods, Richard Neyle, Gilbert Browning, Richard Brace, James Baird, Robert Grieve, J. B. McLew, Thomas R. Job, David Watson, J. Goodfellow, T. W. Stabb, John Baird.

---

**MASONIC.**

Hon. James S. Clift, D.P.G. Master.

*St. John's Lodge, No. 579, R.E.*—Charles Wright, W.M. J. J. Bennett, S.W. Alfred Pike, J.W. G. Litch, Treasurer. E. B. Moore, Secretary. F. J. Vailance, S.D. R. H. Baden, J.D. H. T. B. Wood and M. Monroe, Stewards. F. Long, I.G. W. Smith, Tyler. Meetings on the first Friday in every month, at Masonic Hall, British Square.

*Avalon Lodge, No. 776, R.E.*—W. V. Whiteway, W.M. J. F. Chisholm, S.W. George Rendell, J.W. George Bulcock, Treasurer. James Stott, Secretary. Alexander Grant, S.D. Thomas Wright, J.D. Charles Ellis and John Fitzgerald, Stewards. J. H. Ebsary, I.G. W. Smith, Tyler. Meetings on the first Tuesday in every month, at Masonic Hall, British Square.

*Tasker Lodge, No. 454, R.S.*—P.M. John Mortimer, W.M. W. T. Parsons, S.W. Thomas McKenzie, J.W. Thos. A. Winsor, Treasurer. W. A. Murett, Secretary. Geo. Dicks, S.D. Adam Martin, J.D. Thos. Gillispie and W. J. McKenzie, Stewards. Alex. Smith, I.G. Wm. Smith, Tyler. Regular Meetings on the first Thursday in every month, at Mason Hall, British Square.

---

**ST. JOHN'S ATHENÆUM.**

Hon. Nicholas Stabb, President. Hon. R. J. Pinsent, and Hon. R. Kent, Vice-Presidents. E. L. Moore, F. J. Wyatt, Curators. D. W. Prowse, Secretary. Committee—James Fox, C. T. Ryland, D. Schater, James Baird, John Bowring, George Lush, William Boyd, John Mechan, John T. Burton. Charles Barnes, Librarian and Superintendent of Rooms.

---

**CATHOLIC INSTITUTE.**

Right Rev. Dr. Mulock, Patron. Rev. R. Howley, D.D., President. R. J. Kent, Esq., Vice-President. R. Rufus, Secretary. William Walsh, Treasurer. Council—Joseph J. Little, John Duffy, Randall Green, Michael J. O'Mara, William Doughtney, Philip Cleary, Michael Farrell, Thomas N. Molloy, Patrick Hogan, John Kitchin.

---

**THE ATLANTIC TELEGRAPH COMPANY.**

[Incorporated by Act of Parliament, 1857.]

*Directors*—The Right Hon. James Stuart Wortley, Chairman. Curtis M. Lampson, Vice Chairman. G. P. Bidden, C.E., Francis Le Breton, Edward Cropper. Sir Edward Cunard, Bart., Samuel Gurney, M.P., Captain A. T. Hamilton, George Peabody, John Pender, M.P., W. H. Stephenson.

*Consulting Scientific Committee*—William Fairbairn, F.R.S., Manchester; Captain Douglas Galton, R.E., F.R.S., London; Professor William Thomson, F.R.S., Glasgow; Professor C. Wheatstone, F.R.S., London; Joseph Whitworth, F.R.S., Manchester.

Offices, 12 St. Helen's Place, Bishopgate Street Within, London.

George Seward, Secretary and General Superintendent. Cromwell F. Varley, Electrician. Freshfields and Newman, Solicitors. H. W. Blackburn, Auditor. The Bank of England, and Messrs. Glyn, Mills & Co., Bankers, London.

---

**THE ANGLO-AMERICAN TELEGRAPH COMPANY.**

(LIMITED.)

[Incorporated under the Companies' Act, 1862, which limits the liability of each Shareholder to the amount of the Shares subscribed by him.]

Capital—£600,000 in 60,000 shares of £10 each.

Under arrangements with the Atlantic Telegraph Company, this Company will be entitled to receive £125,000 per annum out of the earnings from the working of the Atlantic Telegraph Company's lines, and they will also be entitled to receive £25,000 per annum from the New York, Newfoundland and London Telegraph Company, out of the earnings of that Company for through Messages. The agreements between the Companies provide for other contingent advantages.

*Directors*—George Peabody, Edward Cropper, Capt. A. T. Hamilton, Richard Atwood Glass, Daniel Gooch, M.P., Henry Bewley, Francis A. Bevan, J. R. McClean, C.E., Charles E. Stewart.

Barclay, Bevan, Tritton, Twells & Co., 54 Lombard Street, E.C., Bankers. J. C. Deane, Secretary. Brooking & Co., St. John's, Newfoundland, Agents.

---

**NEW YORK, NEWFOUNDLAND AND LONDON TELEGRAPH COMPANY.**

*Directors in New York*—Peter Cooper, Moses Taylor, Cyrus W. Field, Marshal O. Roberts, Wilson G. Hunt.

Peter Cooper, President. Cyrus W. Field, Vice President. Moses Taylor, Treasurer. Edward Kavanagh, Secretary. David D. Field, Counsel. Alexander M. McKay, General Superintendent and Local Manager, St. John's.

### Total Value

*In Sterling, of the Imports and Exports of the Colony of Newfoundland, from and to each Country, in the Year 1865.*

Countries.	Imports therefrom.	Exports thereto.
United Kingdom	£408,109	£338,695
Jersey	21,305	4,982
Canada	86,816	23,818
Nova Scotia	90,760	12,794
New Brunswick	1,932	1,141
Prince Edward Island	14,354	1,305
British West Indies	28,081	69,190
Malta		2,126
Hamburg	50,754	23,573
Spain	5,628	163,427
Portugal	8,812	189,055
Italy		21,162
Sicily	1,244	4,783
Ionian Isles		3,730
United States	348,303	109,837
Foreign West Indies	34,626	24,375
Brazil		169,510
St. Peters	3,754	335
Total.....	£1,104,078	£1,144,368

### Fire, Life and Marine Insurance Companies.

Phoenix Fire Insurance Company of London—Established 1782.  
Agents for Newfoundland, W. & G. Rendell, St. John's.

Pelican Life Insurance Company of London—Established 1797.  
Agents for Newfoundland, W. & G. Rendell, St. John's.

Agents for Lloyds—Brooking & Co., St. John's. Radley & Sons,  
Harbor Grace. Philip DeQuetteville & Brothers, Labrador. John  
P. Frecker, St. Pierre.

Standard Life Assurance Company—Registered and Empowered  
under Act of Parliament. Annual Income, over £650,000. Accumulated and Invested Funds, £3,500,000. St. John's Branch, Hon. L. O'Brien, W. H. Mate, A. W. Harvey, Directors; Agent and Secretary, Frederick J. Wyatt.

Alliance British and Foreign Life and Fire Assurance Company,  
London. Capital, £5,000,000 sterling. Brooking & Co, Agents  
for Newfoundland.

The Royal Insurance Company, for Fire, Life and Annuities.—  
Royal Insurance Buildings, Liverpool; and 29 Lombard Street,

London. Capital, £2,000,000 sterling. Job, Brothers & Co., Agents Newfoundland Branch.

Liverpool, London and Globe Fire and Life Insurance Company—Established 1836. Capital, £2,000,000 sterling. Invested Fund, £3,212,344. Income, £1,144,000. Bowring, Brothers, Agents for Newfoundland.

Britannia Life Assurance Office, London—St. John's Branch, D. W. Prowse, Agent.

Queen Insurance Company of Liverpool and London, for Fire and Life. Capital, £2,000,000 sterling. General Agent for Newfoundland, D. W. Prowse. Sub-Agent for Conception Bay, Hon. John Hayward.

International Life Assurance Society, of London. Capital, £500,000 sterling, in addition to about £100,000 currency, of reserved profits. Directors—Charles F. Bennett, Ewen Stabb, Hon. Ambrose Shea. Hon. N. Stabb, General Agent for Newfoundland.

Imperial Fire Insurance Company of London—Established 1803. Capital subscribed and invested, £1,600,000. Agents for Newfoundland, J. & W. Stewart.

Star Life Assurance Society, Chief Office, 48, Moorgate Street, London. St. John's—W. C. Simms, M.D., Medical Referee. Agent for Newfoundland, Joseph Woods.

Baltimore Underwriters, Boston Underwriters, Twelve Offices.—Boards of Underwriters of the Cities of New York and Philadelphia.—American Lloyds. Attorney and Agent for Newfoundland, W. H. Newman. Represented by C. T. Ryland.

Liverpool Underwriters' Association—Ridley & Sons, Harbour Grace, Agents.

Life Association of Scotland. Local Directors—H. K. Dickinson, Hon. James Cormack, Robert Grieve. Dr. W. C. Simms, Medical Officer. E. L. Jarvis, Secretary and Agent.

Maritime Insurance Company of Liverpool. Capital, £1,000,000, sterling. Local Directors, John Bowring, Robert Grieve, W. H. Ridley. Agent, E. L. Jarvis.

The Lancashire Insurance Company, (Fire and Life,)—Capital, £2,000,000 sterling. Agent for St. John's, Newfoundland, E. L. Jarvis.

Northern Assurance Company of London. Established in 1836. Capital, £2,000,000 sterling; accumulated Funds, upwards of £700,000; annual Revenue, over £230,000. Agent for Newfoundland, Augustus O. Hayward.

North British and Mercantile Insurance Company—Established 1809. Incorporated by Royal Charter and Special Acts of Parliament. Agent for Newfoundland, Hon. Ambrose Shea.

Canada Life Assurance Company—Established 1847. Capital \$1,000,000. Dr. J. N. Fraser, Medical Adviser. Agent at St. John's, Newfoundland, James Bayly.

Commercial Union Assurance Society, 19, Cornhill, London. Marine Branch, - 5, Royal Exchange Avenue. Capital, £2,500,000. Agent, St. John's, Ewen Stabb.

Mutual Life Assurance—Scottish Provident Institution, instituted 1837. Medical Officer, J. N. Fraser, M.D. Agent for Newfoundland, Hon. J. O. Fraser.

Albert Medical & Family Endowment Life Assurance Company with which is combined the Kent Mutual Assurance Society, London. Established 1838. Bankers, Commercial Bank of Newfoundland.

Mutual Marine Insurance Club of Conception Bay—John Fitzgerald, Secretary, and Treasurer.

Mutual Insurance Society of Brigus, Conception Bay—Jonathan Percy, Treasurer and Secretary.

---

### Joint Stock Companies, Public Societies, &c.

---

St. John's Gas Light Company—Directors, Stephen Rendell, President; Hon. R. O'Dwyer, J. Bowring, Vice Presidents; J. B. Wood, Hon. Laurence O'Brien, David Selater, Robert H. Prowse, W. F. Rennie, Secretary.

Harbor Grace Gas Company—Directors, John Mann, T. H. Ridley, W. J. S. Donnelly, Thomas Higgins, P. Devereux, Robert Walsh, G. C. Rutherford.

General Water Company, St. John's.—Incorporated 1859. Directors—Hon. Ambrose Shea, President; Hon. Laurence O'Brien, and Ewen Stabb, (Government Directors). Hon. F. B. T. Carter, Q.C., Solicitor Pierre M. Barron, Secretary. John T. Nevill, Assessor of Property Robert J. Pinsent, Collector of Rates and Assessments.

Harbor Grace Water Company—Directors, Thomas H. Ridley, President; W. J. S. Donnelly, Treasurer; John Mann, Hon. J. Hayward, Daniel Green, G. C. Rutherford, Nathaniel Davis, C. Waits, Secretary and Collector.

Agricultural Society—His Excellency the Governor, Patron.—Hon. R. J. Pinsent, President. Stephen Rendell, Rev. Mr. Phelps, Hon. Judge Robinson, James J. Rogerson, Vice Presidents. Joseph Crowdy, Treasurer. W. F. Rennie, Secretary.

St. John's Floral and Horticultural Society—President, Thomas Bennett. Vice Presidents, Hon. R. J. Pinsent, James J. Rogerson. Treasurer and Secretary, Henry C. B. Thomas.



Harbor Grace Agricultural and Horticultural Society—Henry T. Moore, President. J. J. Roddick and R. Walsh, Vice Presidents. G. C. Rutherford, Treasurer. Caudius Watts, Secretary.

Newfoundland Fishermen's Society—Charles Power, President. William Coady, Vice President. Patrick Ryan, Assistant Vice President. James McLaughlan, Treasurer. Thomas Duff, Second Treasurer. Thomas Jackman, Third Treasurer. Laurence Barron, Secretary. Thomas Mullins, Assistant Secretary. Physician, Thomas McKen, M.D.

Fishermen's Society, Heart's Content—Rev. G. Gardner, President. James Piercy and James Moore, Vice Presidents. S. A. Earle, Secretary. R. Rockwood, Assistant Secretary. James H. Moore, Treasurer. J. Hopkins, jr., Assistant Treasurer. John Ryall, Medical Adviser.

Floating Dry Dock Company—S. Rendell, President. L. Teasler, P. Fechan, J. Goodfellow, J. McLoughlan, R. Grieve, John Bowring, Directors.

Vail's Joint Stock Company for Ship Biscuit Baking—S. Rendell, President; J. Bowring, R. Thorburn, E. Duder, A. W. Harvey, Directors. William Wheatley, Manager.

St John's Steamtug Company—Robert Alexander, John Bowring, Thomas H. Walters, James Goodfellow, Robert Grieve, Stephen Rendell, Augustus W. Harvey. T. H. Walters, Manager.

St. John's Phoenix Volunteer Fire Company—Francis Boggin, First Director. William Muldowney, Second Director. Patrick Reardon, Treasurer. Philip Hally, Secretary.

Cathedral Fire Brigade—William McGrath, First Director. Thos. Brine, Second Director. William Row, Treasurer. George Thomas, Secretary.

Harbor Grace Volunteer Fire Company—Michael Hartery, First Director. John Strathie, Second Director. Patrick Walsh, Treasurer. H. J. Fitzgerald, Secretary. S. Braker, Superintendent of Engine. William Tapp, Foreman of Levers.

Manufactories, Mills, &c., St. John's—2 Saw Mills, 1 Bone Mill, 1 Gas Manufactory, 2 Iron Foundries, 2 Distilleries, 1 Brewery, 1 Water Works, 4 Bakeries (by Machinery), 1 Patent Slip, 1 Floating Dock, 1 Oil Manufactory, 1 Fish Manure Manufactory, 1 Tannery, 1 Rope Walk. Brigus—1 Corn Mill. Harbor Grace—1 Corn Mill, 1 Gas Manufactory, 1 Water Works, 1 Patent Slip. Exploits Bay—2 Saw Mills. Middle Arm of Green Bay—1 Saw Mill. Exploits (Burnt Island)—2 Saw Mills. Hall's Bay—2 Saw Mills. Trinity Bay—5 Saw Mills.

## Benevolent and Charitable Societies.

**Benevolent Irish Society**—Founded 1806. The Right Rev. Dr. Mullock, Patron. Hon. L. O'Brien, Vice Patron. Hon. Edward Morris, President. John Casey, Vice President. Thomas S. Dwyer, First Assistant. Michael J. O'Mara, Second Assistant. Richard Howley, Treasurer. Robert J. Kent, Secretary. William Doughty, Chairman Orphan Asylum. Michael Rice, Chairman of Charity. John Rawlins, Chairman of Review and Correspondence. Henry V. Born, Secretary Orphan Asylum School.

**Church of England Asylum for Widows and Orphans**—His Excellency the Governor, Patron. The Right Rev. Dr. Feild, Visitor and President. The Ven. Archdeacon Kelly, M.A., and Rev. T. M. Wood, Vice Presidents. The Right Rev. the Visitor and President (*ex officio*), Henry K. Dickinson, Hon. John Winter, M.D., Trustees. Hon. James S. Clift, Treasurer. Rev. G. M. Johnson, Honorary Secretary. Charles Crowdy, M.D., Physician. Committee—John Bowring, John Tunbridge, Rev. C. Medley, Edwin Duder, Philip Hutchins, J. H. Warren, A. W. Harvey, Hon. Judge Robinson, Hon. the Chief Justice, William H. Mare.

**St. John's Industrial Society**—Miss Musgrave, Patroness. Mrs. Jarvis, President. Mrs. Hayward, Treasurer. Mrs. M. Harvey, Secretary. Committee—Mrs. Hoyles, Mrs. Mudge, Mrs. McMurdo, Mrs. Muir, Mrs. J. B. Wood, Mrs. LeMessurier, Mrs. Goodridge, Mrs. Holden, Mrs. Stabb, Mrs. Lash, Mrs. J. Prowse, Miss McLea, Mrs. Goodfellow, Miss Carter, Mrs. Walbank, Mrs. Boyd, Miss G. Robinson, Miss Moore.

**Religious Tract and Book Society**—Hon. P. G. Tessier, President. R. Brown, Treasurer. J. W. Marriott, Secretary. Committee,—Rev. M. Harvey, Rev. D. McRae, Rev. John Prince, Rev. James Howell, Hon. Chief Justice Hoyles, J. B. Bulley, S. Rendell, J. Seaton, W. Boyd, J. Bayly, Hon. J. Bemister, A. Goodridge, A. Whiteford, James Howe.

**St. George's Society**—John Bowring, President. Augustus O. Hayward and Joseph Crowdy, Vice-Presidents. Henry F. Wood, Treasurer. J. C. Withers, Secretary. Committee of Charity—The above named officers, *ex officio*, and the Revs. T. M. Wood, G. M. Johnson, and Charles Medley; Hon. James S. Clift, Thomas R. Smith, John C. Withers, Charles R. Ayre, George F. Bown, George T. Rendell, and Henry K. Dickinson. Physician—Dr. H. Stabb.

**St. Andrew's Society**—Robert Grieve, President. John B. McLea, Vice-President. James Baird, Treasurer. R. Stott, M.A., Secretary. Committee of Charity—Charles Rankin, Robert Blackwood, and Gilbert Browning. Medical Advisers, Drs. McKen and Fraser.

**Newfoundland British Society**—Samuel Carnell, President. Thomas Withycombe, Vice-President. Henry W. Seymour, Treasurer. William H. Charles, Secretary.

British Society of Conception Bay—George C. Rutherford, President. G. Howell, Vice-President. James Hippeley, Treasurer. C. W. Ross, Secretary.

Society of St. Vincent de Paul—Thomas S. Døyer, President. James Furlong, Vice-President. Edward Power, Assistant Vice-President. W. Kitchin, Treasurer. William Doughty, Secretary.

Grand Division of Sons of Temperance—J. G. Hadlock, G.W.P. Hon. J. Bemister, G.W.V. E. Bruce, G. Scribe. James Murray, G. Treasurer. John Lang, G. Chaplain. E. M. Archibald, G. Con. J. N. Carter, G. Sen.

Deputy Grand Worthy Patriarchs in the Outports:—Edward Genge, Port aux-Basque, Division No. 33. George Robinson, Petites, Division No. 39. — Scott, Grand Bank, Division No. 9. Dr. Robert White, Trinity, Division No. 8. John Weare, Olive Branch Division (Borin) No. 1. C. Hallett, Bay of Hope Division (Borin) No. 12. William Harding, Star of the East Division (Borin) No. 7. John Duder, North Star Division, Twinkl gate, No. 15. Edward Colton, for Green's Pond Division, No. 14. David Rogers, Harbor Grace Division, No. 10.

Free St. Andrew's Total Abstinence Association—President, Rev. M. Harvey.

Total Abstinence and Benefit Society—John Darmody, President. Robert Smith, Vice-President. John Kavanagh, First Assistant. Stephen Condy, Second Assistant. Charles Kickham, First Treasurer. Philip Hally, Second Treasurer. Patrick Reardon, Secretary. H. Shea, M.D., Medical Adviser.

Mechanics' Society—John Maher, President. John Power, Vice-President. William L. Mallowney, First Assistant. Richard Hanley, Second Assistant. William McGrath, First Treasurer. John Mockler, Second Treasurer. William Kelly, Third Treasurer. John Trelegan, Secretary. Henry Shea, M.D., Physician.

Shipwrights' Benefit Society—Garrett Dooley, President. Thos. Soper, 1st Vice-President. Joseph Raines, 2nd Vice-President. Edward Knight Treasurer. Jeremiah Hickey, Secretary.

Dorcas Society, St. John's—Mrs. Finlay, President. Mrs. Bemister, Treasurer. Mrs. Christopher Brown, Secretary. Mrs. E. Smith, Mrs. C. Brown, Mrs. J. J. Rogerson, Mrs. Reid, Collectors. Mrs. Bemister, Mrs. J. W. Smith, Mrs. C. Brown, Dispensers.

Benevolent Irish Society, Conception Bay—Founded in 1814.—The Right Rev. Dr. Dalton, Patron. John Fitzgerald, President. Patrick Devereux, Vice-President. Patrick Walsh, First Assistant. Maurice Connell, Second Assistant. Robert Walsh, Treasurer. James Dolger, Secretary. John Byrne, Chairman of Charity. Richard Walsh, Chairman of Review and Correspondence.

Trinity Benefit Club—Instituted 1838.—Patrick Murphy, President. Dr. White, Vice-President. W. D. Cross, Treasurer. James Collis, Secretary.

ABSTRACT FROM NEWFOUNDLAND CENSUS, OF 1857.

The  
perin  
and 1  
the f  
given  
both i  
testan

ABSTRACT FROM NEWFOUNDLAND CENSUS, OF 1857.

Names of Districts.	Number of Inhabitants.	No. of Males	No. of Females	No. of Various, Religious Denominations.						
				Church of England.	Catholics	Wesleyans	Rick of Scitland.	Free Kirk	Congregationalists.	Other Denominations
St. John's, East	17352	8757	3595	3493	11867	1305	208	256	225	7
St. John's, West	13124	6701	6423	2162	10033	579	82	169	92	
Harbor-Maine (Conception Bay)	5386	2789	2597	1160	4153	71	2			
Port-de-Grace ditto	6489	3349	3140	2726	1637	2112	1		13	
Harbor Grace ditto	10067	5285	4782	5490	3390	1112	2	73		
Carbonear ditto	5233	2675	2558	791	2582	1859	1	1		
Bay-de-Verds ditto	6221	3274	2947	446	1583	4191	1	1		
Trinity Bay	10736	5618	5118	6016	1253	3460	4	2	2	1
Bonavista	8850	4705	4145	5714	2030	1083	9	14		
Twillingate and Fogo	9717	5167	4550	6232	1442	2036		7		
Ferryland	5228	2776	2452	127	5093	8				
Piacentia and St. Mary's	8334	4434	3900	966	1756	208	4			
Burin	5529	3005	2524	1356	2354	1810	1		1	7
Fortune Bay	3492	1994	1499	2787	647	30				29
Burgeo and LaPoile	3545	1961	1584	3172	89	282	2			
Totals .....	119304	62490	56814	42638	55309	20144	302	529	347	44
French Shore	3334	1778	1556	1647	1586	85		16		

The Census of the Labrador was cursorily taken by the late Superintendent of Fisheries (James L. Prendergast, Esquire.) in 1856 and 1857, but it is not sufficiently correct or full to form a part of the foregoing Returns. The number of permanent residents, as given by that gentleman, from L'Anse Sablon to Sandwich Bay both inclusive, including Belle Isle, is 1650, of whom 1331 are Protestants and 319 Catholics.

---

### Appendix.

The following notifications and appointments have been made since the foregoing sheets went to press :—

*Member returned to the House of Assembly for Trinity Bay—*  
Robert Alsop, Esquire.

Robert Alsop, Esq., to be Chairman of the Board of Works, in the room of John Casey, Esq.

Charles Mesham, Esq., to be Private Secretary to His Excellency the Governor, in the room of James Musgrave, Esq.

John Tuff and Robert Biggs, to be members of the Road Board for the Upper Division of Bay de Verds District.

Thomas Greening, John Oldford, and Thomas Strathie, to be a Road Board for Musgrave Town, Bonavista Bay.

John Prince, James Eagan, jr. and Joseph Brown, to be a Road Board from Open Hall to Indian Arm, Bonavista Bay.

Martin Williams, Thomas Mockler, and Cornelius Bryan, to be a Road Board for Bay Bulls.

Very Rev. Dean Cleary, James Murphy, Michael Driscoll, James Carey, Samuel Driscoll, and Thomas Gatherall, to be a Road Board from Witless Bay to Baleen.

Rev. W. Forrestal, Patrick Leary, William Johnson (Renewse) John Connell, Henry O'Neill, (Fernewse), to be a Road Board for Renewse and Fernewse.

Rev. James Murphy, John White, William Carter (Ferryland), Michael Power, Robert Morey (Cap'n Bay) Henry Winsor, Edward Condon, (Aqualforte) to be a Road Board for Ferryland, Cap'n Bay, and Aqualforte.

Thomas Carew, Martin Cashin, — Green, (South Side Cape Broyle), Nicholas Power, Thomas Badcock, (Brigus) to be a Road Board for Cape Broyle and Brigus.

Joseph G. Haddock, to be Surveyor of Shipping at Grand Bank and Fortune.

Rev. Thomas Hennebury to be a member of the Roman Catholic Board of Education.

Frederick Shears, Open Hall, and Nicholas Cheevers, Plate Cove, to be members of the Road Board from Open Hall to Indian Arm, via Plate Cove; and Mr. James Rolls, Bald Island, to be a member of the Road Board at Fogo, in the room of Mr. Walter Williams.

---

e since

Bay—

orks, in

ellency

Board

o be a

a Road

to be a

James

Board

newse)

ard for

yland),

Edward

n Bay,

le Cape

a Road

l Bank

Catholic

e Cove,

n Arm,

member

ams.

