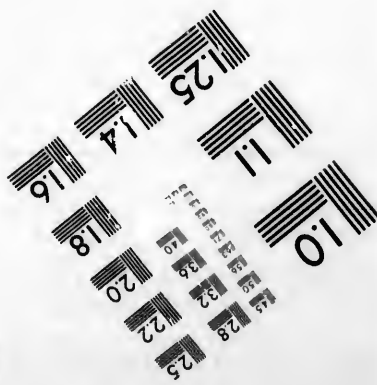
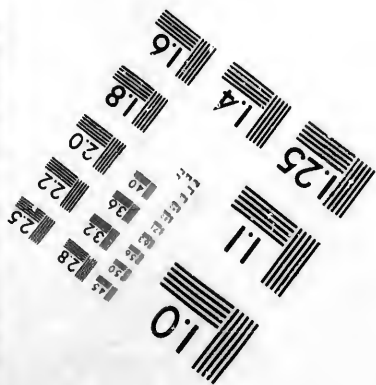
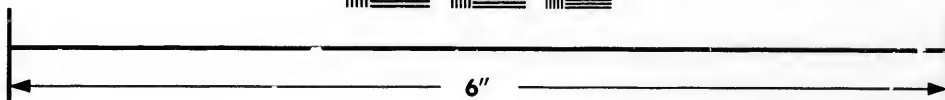
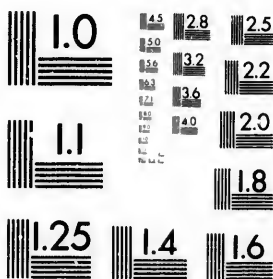


**IMAGE EVALUATION
TEST TARGET (MT-3)**



**Photographic
Sciences
Corporation**

23 WEST MAIN STREET
WEBSTER, N. Y. 14580
(716) 872-4503

14 28
18 32
22 25
20
18

**CIHM/ICMH
Microfiche
Series.**

**CIHM/ICMH
Collection de
microfiches.**



Canadian Institute for Historical Microreproductions / Institut canadien de microreproductions historiques

10

© 1981

Technical and Bibliographic Notes/Notes techniques et bibliographiques

The Institute has attempted to obtain the best original copy available for filming. Features of this copy which may be bibliographically unique, which may alter any of the images in the reproduction, or which may significantly change the usual method of filming, are checked below.

L'Institut a microfilmé le meilleur exemplaire qu'il lui a été possible de se procurer. Les détails de cet exemplaire qui sont peut-être uniques du point de vue bibliographique, qui peuvent modifier une image reproduite, ou qui peuvent exiger une modification dans la méthode normale de filmage sont indiqués ci-dessous.

- Coloured covers/
Couverture de couleur
- Covers damaged/
Couverture endommagée
- Covers restored and/or laminated/
Couverture restaurée et/ou pelliculée
- Cover title missing/
Le titre de couverture manque
- Coloured maps/
Cartes géographiques en couleur
- Coloured ink (i.e. other than blue or black)/
Encre de couleur (i.e. autre que bleue ou noire)
- Coloured plates and/or illustrations/
Planches et/ou illustrations en couleur
- Bound with other material/
Relié avec d'autres documents
- Tight binding may cause shadows or distortion
along interior margin/
La reliure serrée peut causer de l'ombre ou de la
distortion le long de la marge intérieure
- Blank leaves added during restoration may
appear within the text. Whenever possible, these
have been omitted from filming/
Il se peut que certaines pages blanches ajoutées
lors d'une restauration apparaissent dans le texte,
mais, lorsque cela était possible, ces pages n'ont
pas été filmées.
- Additional comments:/
Commentaires supplémentaires:

- Coloured pages/
Pages de couleur
- Pages damaged/
Pages endommagées
- Pages restored and/or laminated/
Pages restaurées et/ou pelliculées
- Pages discoloured, stained or foxed/
Pages décolorées, tachetées ou piquées
- Pages detached/
Pages détachées
- Showthrough/
Transparence
- Quality of print varies/
Qualité inégale de l'impression
- Includes supplementary material/
Comprend du matériel supplémentaire
- Only edition available/
Seule édition disponible
- Pages wholly or partially obscured by errata
slips, tissues, etc., have been refilmed to
ensure the best possible image/
Les pages totalement ou partiellement
obscurcies par un feuillet d'errata, une pelure,
etc., ont été filmées à nouveau de façon à
obtenir la meilleure image possible.

This item is filmed at the reduction ratio checked below/
Ce document est filmé au taux de réduction indiqué ci-dessous.

10X	12X	14X	16X	18X	20X	22X	24X	26X	28X	30X	32X
<input type="checkbox"/>	<input type="checkbox"/>	<input type="checkbox"/>	<input type="checkbox"/>	<input type="checkbox"/>	<input type="checkbox"/>	<input checked="" type="checkbox"/>	<input type="checkbox"/>	<input type="checkbox"/>	<input type="checkbox"/>	<input type="checkbox"/>	<input type="checkbox"/>

The copy filmed here has been reproduced thanks to the generosity of:

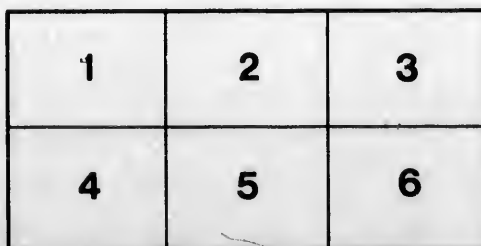
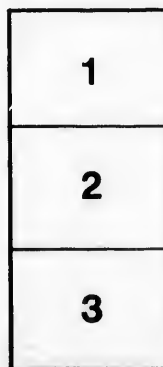
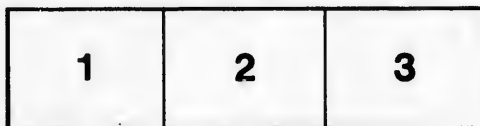
Douglas Library
Queen's University

The images appearing here are the best quality possible considering the condition and legibility of the original copy and in keeping with the filming contract specifications.

Original copies in printed paper covers are filmed beginning with the front cover and ending on the last page with a printed or illustrated impression, or the back cover when appropriate. All other original copies are filmed beginning on the first page with a printed or illustrated impression, and ending on the last page with a printed or illustrated impression.

The last recorded frame on each microfiche shall contain the symbol \rightarrow (meaning "CONTINUED"), or the symbol ∇ (meaning "END"), whichever applies.

Maps, plates, charts, etc., may be filmed at different reduction ratios. Those too large to be entirely included in one exposure are filmed beginning in the upper left hand corner, left to right and top to bottom, as many frames as required. The following diagrams illustrate the method:



L'exemplaire filmé fut reproduit grâce à la générosité de:

Douglas Library
Queen's University

Les images suivantes ont été reproduites avec le plus grand soin, compte tenu de la condition et de la netteté de l'exemplaire filmé, et en conformité avec les conditions du contrat de filmage.

Les exemplaires originaux dont la couverture en papier est imprimée sont filmés en commençant par le premier plat et en terminant soit par la dernière page qui comporte une empreinte d'impression ou d'illustration, soit par le second plat, selon le cas. Tous les autres exemplaires originaux sont filmés en commençant par la première page qui comporte une empreinte d'impression ou d'illustration et en terminant par la dernière page qui comporte une telle empreinte.

Un des symboles suivants apparaîtra sur la dernière image de chaque microfiche, selon le cas: le symbole \rightarrow signifie "A SUIVRE", le symbole ∇ signifie "FIN".

Les cartes, planches, tableaux, etc., peuvent être filmés à des taux de réduction différents. Lorsque le document est trop grand pour être reproduit en un seul cliché, il est filmé à partir de l'angle supérieur gauche, de gauche à droite, et de haut en bas, en prenant le nombre d'images nécessaire. Les diagrammes suivants illustrent la méthode.

Ontario Society of Artists



Applied Art Exhibition
CATALOGUE 1900

Held in the Art Galleries
165 King Street West, Toronto

MAIL JOB PRINT, TORONTO

LP
A502
1900
579

The Alexander & Cable Lithographing Co., Limited

ENGRAVERS, DESIGNERS, LITHOGRAPHERS
ARTISTIC MEMORIAL BRASS TABLETS

Mail Building, Toronto

The Art Metropole

The Complete Art Store

131-135 Yonge Street, Toronto

Central Ontario School of Art and Industrial Design

Classes re-open October 1st

165 King Street West

P. W. Ellis & Co.

Wholesale and
Manufacturing

Jewellers

31-35 Wellington Street East

The MAIL Job Printing Co., Limited

ARTISTIC PRINTING

110 Bay Street

C. H. Acton Bond

Sandford Fleming Smith

BOND & SMITH

ARCHITECTS

Telephone 1973

Temple Building, Toronto

Ontario Society of Artists



Applied Art Exhibition

CATALOGUE 1900

Held in the Art Galleries
165 King Street West, Toronto

LP
F0012 1900 059

ONTARIO SOCIETY OF ARTISTS

APPLIED ART EXHIBITION 1900

President, G. A. REID. C. M. MANLY, Vice-Pres. and Treas.
Secretary, R. F. GAGEN.

COMMITTEE OF ARRANGEMENT

R. Y. Ellis	A. H. Howard	Miss Muntz
Frank Darling	Miss L. B. Tully	Misc. S. S. Tully
W. A. Langton	G. A. Reid	R. F. Gagen
R. McCausland	C. M. Manly	G. Hahn
W. H. Elliott	Mrs. M. H. Reid	F. S. Challenger
	W. D. Blatchly	

CATALOGUE
OF THE
Applied Art Exhibition

ALEXANDER & CABLE

1. Memorial Brass Tablet, executed for G. Sterling Ryerson, M.D. Designed by Wm. W. Alexander.
2. Reproduction of Memorial Brasses on reduced scale. Designed by A. H. Howard and Wm. W. Alexander.
3. Brass Door Plate. Designed and made by Wm. W. Alexander.
4. Brass Device, Burgee for Bow of a Canoe. Designed and made by Wm. W. Alexander.

ARCHER (Ethel)

5. Spinning Chair.
6. One of two Panels for Music Cabinet.
7. Moorish Table.

ANGSTROM (A.)

8. New Palace Steamer for the Richelieu & Ontario Nav. Co. Manufactured by Bertram Engine Works.
Main Deck Plan.
Saloon "
Gallery "
Longitudinal Section.

BAILEY & OBAN

9. Panels for steamer Toronto.
(a) Cartoons, by J. D. Kelly.
(b) " " F. S. Challenger.
(c) " " "
Architects, Bond & Smith.
10. Soffit, for Beam, Union Bank, Toronto.
Architects, Bond & Smith.
11. Capital, for Thos. Long, Esq., Residence, Toronto.
Architect, E. J. Lennox.

BAILEY & OBAN—*Continued.*

12. Balcony, Fragment of, for Mr. Geo. S. McConkey's Restaurant, Toronto. Architect, E. J. Lennox.
13. Terminus, Female Head for Canadian Bank of Commerce, Toronto. Architects, Darling & Pearson.
14. Tablet, Fragment for Armories, Toronto. Architect, C. D. Lennox.
15. Ceiling, Ornament for Mr. Geo. S. McConkey's Restaurant. Architect, E. J. Lennox.
16. Frieze, Festoon for Mr. Geo. S. McConkey's Restaurant. Architect, E. J. Lennox.

BRIGGS (William)

17. Collection of Leather Bindings.
18. " " Cloth "
19. Samples of Cloth Covers.

BLUMHARDT (Arthur)

20. Magazine Cover.

BOND & SMITH

21. Lady's Escritoire.
UNION BANK, TORONTO.
22. Original Sketch for front.
23. Working Drawing for front.
24. Photo of completed front.
25. Photo of completed interior.
26. Plaster Ornament (Union Bank). Modelled by Bailey & Oban.
27. Design for some of the furniture on Str. Toronto.
Manufactured by Chas. Rogers & Sons Co.
28. Sketch for a fence.
ST. CLEMENT'S CHURCH, TORONTO.
29. Front Elevation.
30. Side Elevation.
31. Transverse Section.
32. Houses in Peterboro, Front Elevation.
(a) Working Drawings.
(a) Club House.
33. (b) Sketch for proposed Church.
(c) " " Entrance Hall Str. Toronto.

BROWN BROS.

- Book Covers.

CHAS. ROGERS & SONS CO.

34. Mantel, Designed by Bond & Smith, Decorated by
G. A. Reid

COWEN (M. Louise)

35. Vase (red roses).
36. Vase (violets).
37. Pitcher (yellow roses).
38. Lamp.
39. Vase (yellow roses).
40. 11 Specimen Plates (part of dinner set).

GRIP PRINTING & PUBLISHING CO.

41. Catalogue Covers. Designed by J. E. R. MacDonald.
42. Booklet Cover. Designed by Carl G. Beal.
43. Menu Cover. Designed by F. Kyle.
44. Catalogue Cover. Designer, Edgar McGuire.
45. Christmas Card. Designer, Arthur Goode.
46. Card Design. Designer, A. A. Brown.
47. Advertising Design. Designer, Norman Price.

GREEN JR. (T. Garland)

48. Book Place.

HOWARD (A. H.)

49. Decorated Album containing address.
50. Case for same.
51. Decorated Address in book form.
52. Collection of Sketch Designs for Stationary Boxes, etc.
53. Collection of Proofs from designs for covers, etc.
54. Collections of Tracings of designs for addresses.
55. Proof of Small Poster.
56. Design for Title Page.
57. Design for Title Page.
58. Design for Tail Piece.
59. Design for Border.

HAHN (Gustav)

60. Bookbinding, embossed leather. Executed by Mrs G. Hahn
61. Picture Frame, " " " "

HEAVEN (Ethel)

- Fire Screen.

HAHN (Gustav)—Continued.

62. Card Case, embossed leather. Executed by Mrs. G. Hahn
 63. Ticket Case, " " " "
 64. Penwiper, " " " "

INTERIOR DECORATIONS. Executed by the Elliott & Son Co.

65. Ceiling Decoration }
 66. Panel for Ceiling } Relief, Staff.
 67. Panel for Ceiling }
 68. Decorations, Ceiling and Wall. Sketch.
 69. Decoration, Ceiling and Wall. Sketch.
 70. Decorations for Chimney Breast }
 71. Decorations for Interior } Sketches.
 72. Decorations for Proscenium }
 73. Decorations.

HARRISON (Justina A.)

74. Case of Dresden and other China.

HOWSON (A. Juliet)

75. China Tea Service, 4 pieces (tray, teapot, sugar bowl
 and milk jug).
 76. Vase (daffodils).
 77. Vase (dandelions).
 78. Plate (yellow roses).
 79. Plate (red currants).
 80. Plate (raspberries).

HYNES (Wm. J.)

81. Section of base of Pilaster, St. George's Cathedral.
 82. Section of Frieze, " "
 83. Capital, " "
 84. Half Shaft. Loretto Abbey Chapel.
 85. Greek Cap. Toronto General Trusts Co. Bld'g.
 86. Caryatide Figure.
 87. Spandril.
 88. Ceiling Spandrils.
 89. Model for Terra Cotta Panel.

JONES (Samuel Molyneux)

- 90. Sketch in water colors of a panel of angels in the Metropolitan Methodist Church, subject: "Musical Praise of the Heavenly Host." McCausland & Son.
- 91. Photos of three Windows. Designed and executed for McCausland & Son.

KELLY (J. D.)

- 92. Wall Paper. Poster. Manufactured by Watson Poster Co., Montreal.

LANGTON (W. A.)

- 93. Pedestal for Bust.
- 94. Architectural Drawings, 87 Bedford Rd., Toronto.
- 95. " " Store in Berlin.

LIVING (M.)

- 96. Ingrain Design (a).
- 97. Ingrain Design (b).
- 98. Carpet from design (a).
- 99. Carpet from design (b). Manufactured by Toronto Carpet Manufacturing Co.
- 100. Ingrain Design. Designed by S. B. Johnson.
- 101. Ingrain Design. Designed by S. B. Johnson and M. Living.
- 102. Two Axminster Designs. Designed by Archie Crabtree.
- 103. Book Cover for "Artist." Designed by Archie Crabtree.
- 104. Book Cover. Designed by Arthur Guertin.
- 105. Lace Collar. Designed by Sydney B. Johnson. Made by Edna Johnson.
- 106. Lace Cover for Tea-Cosy. Designed by Marion Living. Made by Mary E. Living.
- 107. Lace d'Oyley. Designed by Marion Living. Made by Lidie Living.

MACDONALD (James E. H.)

- 108. Three Designs for Book Plates.

MCCORMACK & CO.

- 109. "Steady" from picture by T. Blinks. Carved by W. N. McCormack.

McCORMACK & CO.—*Continued.*

- 110. Two Panels for Cabinet, Flower Studies. Designed and carved by W. N. McCormack.
- 111. Frieze for Door-way. Designed by W. N. McCormack. Carved by Arthur Dinsmore assisted by W. N. McCormack.
- 112. Wall Bracket. Designed by W. N. McCormack. Carved by Geo. Baiden assisted by W. N. McCormack.
- 113. Panel. Carved and designed by W. N. McCormack.

MORANG (G. M.)

- 114. Cover Designs by Harriet Ford, Rex Stovel and G. A. Reid.

MAIL JOB PRINTING CO.

- 115. Grcup of Covers, Booklets, etc.

MARTIN (A. A.)

- 116. Design for Constitution and By-laws of the Maulstick Club.

McCAUSLAND (Robt.)

- 117. Sketch for Stained Glass.
- 118. Working Cartoons for Stained Glass Windows.

MANLY (C. M.)

- 119. Two Posters.

REID BROS. M'FG. Co

- 120. Upright Grand Piano. Designed and decorated by G. A. Reid.

REID (Mary H.)

- 121. Mirror.

REID (G. A.)

- 122. Groups of Studies for Mural Decorations.
- 123. Sketch and Cartoon for decoration in Onteora Church, Catskill Mountains, with Photograph.
- 124. Group of Decorative Illustrations and Cover Designs, and Photos of City Hall Decorations.

MESSRS. REID, CRUIKSHANK, GRIER AND CHALLENGER

125. Studies for Mural Decorations proposed for the Council Chamber, Toronto City Hall.

STAPLES (O. P.)

126. Decoration for the front of a Piano.

SMITH (Eden)

127. Drawing of House.
128. Sheet of Photos of Houses.

TULLY (L. Beresford)

129. Seat and Back of Chair in Embossed Leather (laquered).

TORONTO ENGRAVING CO.

130. Group of Designs.
131. Three Color Chromo Engravings. Designed by F. H. Brigden.

TORONTO CARPET M'FG. CO.

132. Axminster Carpet. } Designed by Leslie Jones.
133. Axminster Carpet. }
134. Large Whole Carpet Rug and small ones to match.
135. Collection of Samples of Carpets. Designs by M. Living.

VICKERS (Henrietta M.)

136. A Prayer for Peace.
137. Design for Decorative Panel.

WICKSON (A. Frank)

138. Pen and Ink Drawing.
139. Pen and Ink Drawing.
140. Colored Elevation with plans of Houses.

WHITE-FRASER (M.)

141. Carved Writing Cabinet.
142. "Renaissance."

METALLIC ROOFING CO.

143. Stamped Metal.

THE MASON & RISCH PIANOS
both in tonal excellence and chasteness of design are known as
"THE INSTRUMENTS OF THE CULTURED"

The Mason & Risch Piano Co., Limited
32 King Street West, TORONTO

THE TORONTO LITHOGRAPHING CO., Limited

Make a specialty of

Fine Color Work

Posters, Book Covers, Show Cards, Calendars, Fine Labels, etc.
Advertising Novelties, all descriptions *Map Work in all its branches*
King and Bathurst Streets, TORONTO

E. J. LENNOX

Architect

S.-E. Cor. King and Yonge Sts.

William J. Hynes

Contractor and Plasterer

Relief Decorations in Stucco, Fibrous Plaster, Cements, etc.

Telephone 1609

16 Gould Street, Toronto

H. J. Matthews

95 Yonge Street

Gilder and Picture Dealer

THE REID BROS. MANUF'G CO.

Manufacturers of
High Grade **Pianos**

257 King Street West

TORONTO

Toronto Engraving Co.

*Designers and Engravers
by all modern methods.*

92 Bay Street

If you wish to help yourselves you must help others.
Encourage Canadian manufactures by buying Canadian-made articles.

Toronto Carpet Manufacturing Co.,

LIMITED

Robt. McCausland Stained Glass Co.

Memorial Windows

Decorative Glass for Dwellings

87 King Street West

THE ELLIOTT & SON CO., Limited

Wall Papers, Hardwood Floors
Interior Decorations

79 King Street West

TORONTO

THE GRIP
PRINTING AND
PUBLISHING CO
LIMITED



TORONTO
CANADA

F. HARRIS CO LTD
44
KING ST.
EAST
TORONTO.

Models
for
WOOD, STONE
AND METAL

BAILEY OBEN



A. H. HOWARD
73 TEMPLE BLDG
DESIGNER



PRESENTATION
ADDRESSES
DESIGNED AND
ENGROSSED

