

Technical and Bibliographic Notes / Notes techniques et bibliographiques

The Institute has attempted to obtain the best original copy available for filming. Features of this copy which may be bibliographically unique, which may alter any of the images in the reproduction, or which may significantly change the usual method of filming, are checked below.

L'Institut a microfilmé le meilleur exemplaire qu'il lui a été possible de se procurer. Les détails de cet exemplaire qui sont peut-être uniques du point de vue bibliographique, qui peuvent modifier une image reproduite, ou qui peuvent exiger une modification dans la méthode normale de filmage sont indiqués ci-dessous.

Coloured covers/
Couverture de couleur

Covers damaged/
Couverture endommagée

Covers restored and/or laminated/
Couverture restaurée et/ou pelliculée

Cover title missing/
Le titre de couverture manque

Coloured maps/
Cartes géographiques en couleur

Coloured ink (i.e. other than blue or black)/
Encre de couleur (i.e. autre que bleue ou noire)

Coloured plates and/or illustrations/
Planches et/ou illustrations en couleur

Bound with other material/
Relié avec d'autres documents

Tight binding may cause shadows or distortion along interior margin/
La reliure serrée peut causer de l'ombre ou de la distorsion le long de la marge intérieure

Blank leaves added during restoration may appear within the text. Whenever possible, these have been omitted from filming/
Il se peut que certaines pages blanches ajoutées lors d'une restauration apparaissent dans le texte, mais, lorsque cela était possible, ces pages n'ont pas été filmées.

Coloured pages/
Pages de couleur

Pages damaged/
Pages endommagées

Pages restored and/or laminated/
Pages restaurées et/ou pelliculées

Pages discoloured, stained or foxed/
Pages décolorées, tachetées ou piquées

Pages detached/
Pages détachées

Showthrough/
Transparence

Quality of print varies/
Qualité inégale de l'impression

Continuous pagination/
Pagination continue

Includes index(es)/
Comprend un (des) index

Title on header taken from:/
Le titre de l'en-tête provient:

Title page of issue/
Page de titre de la livraison

Caption of issue/
Titre de départ de la livraison

Masthead/
Générique (périodiques) de la livraison

Additional comments:/
Commentaires supplémentaires: Some pages are cut off.

This item is filmed at the reduction ratio checked below/
Ce document est filmé au taux de réduction indiqué ci-dessous.

10X	14X	18X	22X	26X	30X
<input type="checkbox"/>	<input type="checkbox"/>	<input type="checkbox"/>	<input type="checkbox"/>	<input type="checkbox"/>	<input checked="" type="checkbox"/>
12X	16X	20X	24X	28X	32X

CANADA LUMBERMAN

WEEKLY EDITION

The Lumberman Monthly Edition, 28 pages } \$1.00 PER YEAR { The Lumberman Weekly Edition, every Wednesday

THIS PAPER REACHES REGULARLY THE PRINCIPAL LUMBER MANUFACTURERS AND DEALERS THROUGHOUT CANADA, AND WHOLESALE BUYERS IN GREAT BRITAIN, THE UNITED STATES, AND OTHER FOREIGN MARKETS.

VOL. IX.

TORONTO, CANADA, MARCH 18, 1903

No. 7

CANADA LUMBERMAN

PUBLISHED BY

The G. H. Mortimer Publishing Co'v
of Toronto, Limited

Confederation Life Building - TORONTO.

Branch Offices:

IMPERIAL BUILDING MONTREAL.

25 GREAT ST. HELEN'S, LONDON, E. C.

The Weekly Lumberman - Published every Wednesday, contains reliable and up-to-date reports of market conditions and tendencies in the principal manufacturing districts and leading domestic and foreign wholesale markets. A weekly medium of information and communication between Canadian timber and lumber manufacturers and exporters and the purchasers of timber products at home and abroad.

The Monthly Lumberman - A 32-page journal, discussing fully and impartially subjects pertinent to the lumber and wood-working industries. Contains interviews with prominent members of the trade, character sketches and portraits of leading lumbermen, etc. Its special articles on technical and mechanical subjects are especially valuable.

WANTED AND FOR SALE

Advertisements will be inserted in this department at the rate of 15 cents per line each insertion. When four or more consecutive insertions are ordered a discount of 25 per cent. will be allowed. This notice shows the width of the line and is set in Nonpareil type; 12 lines make one inch. Advertisements must be received not later than 4 o'clock p. m. on Tuesday to insure insertion in the current week's issue.

PERLED CEDAR POLES FOR SALE, 25 to 60 ft., 7" tops, now ready for shipment. P. O. Box 213, Almonte, Ont.

WANTED - 150,000 FEET OF 1 IN. SOFT Elm, log run, mill culls out, any lengths and any widths; would buy it either green or dry. Quote f. o. b. nearest station. Address, H. NOUVOUIN, 712 St. James Street, Montreal, Quebec.

WANTED AT ONCE - SAWYER FOR MEDIUM MILL, must be temperate, steady, able to file and care for saws and do general repairing around mill when necessary. Give reference, experience and wages expected. W. B. McLEMAN & Co., Box 172, North Bay.

FOR SALE

1 Standard Gauge Locomotive 35 tons.
1 Narrow Gauge Locomotive 22 tons.
1 Narrow Gauge Locomotive 17 tons.
30 Narrow Gauge Logging Cars.
75 tons Relaying Steel Rails 30 lbs. per yard.
75 tons Relaying Iron Rails 40 lbs. per yard.
300 tons Relaying Steel Rails 45 lbs. per yard.
30 tons Relaying Steel Rails 36 lbs. per yard.
Available for immediate shipment.

JOHN J. GARTSHORE,
83 Front St. W., Toronto.

WANTED

Young, hustling, vigorous English and French speaking Woods Superintendent. Must thoroughly understand economic timber and pulpwood logging and capable of handling workmen to advantage. High-class wages to high-class man. Don't apply if not entirely qualified. Address Box 114, CANADA LUMBERMAN.

FOR SALE

VENEERS - SINGLE PLY OR GLUED UP stock. INTERNATIONAL LUMBER CO., LIMITED, Sault Ste. Marie, Ontario, Canada.

FOR SALE

THE FOLLOWING PROPERTY, CONSISTING of 33 square miles, well timbered, saw mill, pulp mill, 25 tons daily, and Electric plant netting an annual revenue of over \$6,000. Good reasons for selling. For particulars address AUGER & SON, Quebec, Canada.

WANTED

FIVE PORTABLE SAW MILLS TO CUT BY the thousand, in Chapman Township, Barry Sound District. A large quantity of tanbark on trees for sale, to be peeled the coming summer. Apply to C. QUERRONGESSER, Burk's Falls, Ont.

WANTED - IMMEDIATELY, THREE CARS 4 1/2 Black Ash, "common and better"; two cars 4 1/2 Maple, "common and better"; three cars 4 1/2 Birch, "common and better"; one car 5 1/2 Maple "common" or "mill run," all dry. For particulars apply to the KNECHTEL FURNITURE Co., Limited, Hanover.

WANTED - WE ARE ALWAYS OPEN TO contract for all kinds of hardwood lumber. Please state price F. O. B. your nearest station, quantity and quality of the different kinds you will have to sell during 1903. We also require a large amount of Dimension stuff, particulars of which will be furnished on application, by the KNECHTEL FURNITURE Co., of Hanover, Ont.

LIMIT FOR SALE

A TOWNSHIP WITH GOOD RED AND White Pine. About 50,000 Logs now cut and a portion hauled. Mill on the ground. Best shipping facilities. Location on C. P. R. main line. PINE LUMBER COMPANY, Cartier, Ont.

FOR SALE

15,000,000 feet White Pine Lumber. 5,000,000 White Pine Lath.
A large portion of same is Cork Pine.
About 5,000,000 feet lumber already sawn and on sticks.
About 500,000 Laths already manufactured.
Mill now running. Location Sault Ste. Marie, Ontario.
22 feet water at loading dock.
For full information apply to the

INTERNATIONAL LUMBER CO.,
Limited,
Sault Ste. Marie, Ontario, Canada.

PLANING MILL MACHINERY FOR SALE

No. 6 Band re-saw with 4" diston 19 gauge saw, in use less than a year.
No. 1 Shaper iron frame. Invoice to me Oct. 30th, 1901 (McGregor, Gourley make.)
No. 8 Planer and matcher with drop heads, in use two years.
Pedestal buzz planer and countershaft, in use two years.
Bracket band saw, in use two years.
Pedestal tennon machine, in use two years.
Combination rip and cross-cut saw table, in use one year.
8" 3 sided sticker, all overhauled (Cowan & Co. make.)
Power mortiser with drilling attachment. (Fay-Egan make, sent out by A. R. Williams.)
Surfacer, 24" knife, revolving bed (McGregor, Gourley make.)
Post boring machine with tilting table, by Cowan & Co.
Jig saw, by A. R. Williams Co.
About 60 ft. 2" cold rolled steel shafting and numerous split pulleys all about as good as new.
Address

H. J. MERRITT,
Blenheim, Ont.

WANTED - TEN THOUSAND CORDS Hard and Soft Wood; also same quantity of Slabs, SIMCOE WOOD AND LUMBER CO., 52 Yonge Street Arcade, Toronto.

FOR SALE

400,000 FEET WHITE PINE LUMBER 1", 1 1/2", 2", well seasoned log run, a bargain, on line C. O. Railway, tenders solicited. Address ELI T. LAMB, Port Stewart, Ont.

HAVE YOU ANY STOCK WHICH YOU wish to sell? If so, make the fact known to probable buyers by placing an advertisement in the Wanted and For Sale Department. Address, CANADA LUMBERMAN, Toronto.

WANTED - A MILL RUN OFF FROM THREE to five millions of white pine to be cut to order. We are open to buy any kind of white pine lumber. Will contract for ten million white pine lath. Please write us, CANADA LUMBERMAN N.Y.O., North Tonawanda, N.Y.

LUMBER WANTED

FOR EXPORT DURING THE SEASON OF 1903, 40 to 50 carloads of 1" Soft Elm Lumber suitable for coffin boards stock. Will pay spot cash at any station in Canada. For prices and specifications address J. S. FINDLAY, Owen Sound.

WANTED

ABOUT 1,500,000 PIRCHES CYLINDER Sawm White Staves, 20 1/2", 19 1/2", 18 1/2", 17", 14 1/2", 13 1/2", 12 1/2" and 16" long and 3", 3 1/2" and 2" wide and 7/16" thick.
75 per cent. in 3" wide.
Address Box 77, CANADA LUMBERMAN.

WANTED BY A LUMBER FIRM.

A FIRST-CLASS ENGINE OF 150 H. P., or two engines of 75 H. P. each and a first-class boiler of 750 H. P. Mention prices for cash and when they can be delivered. Address: P. O. Box 619, Montreal.

HARDWOOD LUMBER WANTED.

3-inch Common and Better Soft Elm.
2-inch 1's and 2's Soft Elm.
Also all grades Ash, Basswood, Birch and Elm. Send us list of any hardwood lumber you have for sale.
BRIGGS & COOPER Co., Limited,
Saginaw, Mich.

FOR SALE

Large Tract of Timber in Central Ontario

THE PROPERTY OF
The Canadian Land and Immigration Company of Haliburton, (Limited.)

This company has a large tract of well timbered land about 175 miles north-east of Toronto. There are large quantities of Cedar, Hemlock, Spruce, Pals, 3, Basswood, Cherry, Birch, Maple, also considerable Pine, Elm and Ash on this tract. It is well served by two railroads, one of which is about to be extended through the centre of the property. The Company are prepared to sell this timber in blocks ranging from 5,000 to 10,000 acres, or more if desired.

There are several good mill sites on the property. This would be a good opportunity for parties who are at present cut out and looking for a new location.
Maps and plans and further particulars can be had by applying to

W. H. LOCKHEART GORDON,
Managing Director,
157 Bay Street, Toronto.

WANTED - A BURNER FOR SAW-MILL, about 24 ft. in diameter, by 40 ft. high, must be in good condition. Apply P. O. Box 23, Hamilton.

FOR SALE - LARGE QUANTITY BIRCH and Hemlock; can be cut to order at short notice. CLARIDOR & HILLOCK, South River, Ont.

WANTED.

QUANTITY OF 10 x 10 BHD OR WHITE Pine, and White Oak 4x8 and 8x8, 10 feet long. A. BRUCE, 2 Toronto Street, Toronto.

FOR SALE

SAW MILL, LATH MILL, PLANING MILL, main line C. P. R., near Sudbury, Ont. Particulars on application to CHARLES MCCREA, Harrister, Sudbury, Ont.

FOR SALE.

3 Cars 1 1/4, 1 1/2 and 2 inch good White Pine.
3 Cars 2 and 3 inch Oak suitable for wagon works.
3 Cars 1 inch White Oak.
All been cut from 6 to 15 months.
S. S. NOOTE, Dunsville, Ont.

LIMITS FOR SALE CHEAP

59 SQUARE MILES ON THE BONNECHERE River for \$10,000. Inspection invited at once. Also Mill and Water if desired with the limits at 4th Chute. JOHN KNIGHT, Newfrew P.O., Ont.

FOR SALE.

TWO PRESCOTT BAND MILLS, ONE RIGHT hand and one left hand, both in good condition; two second hand carriages, one right and one left hand; also the following shingle machinery: One Perkins shingle machine; one Boss shingle machine, jointers, edgers and packing boxes, one drag cut off saw, one slabber. Address HOLLAND & GRAVES, Buffalo, N.Y.

CURRENT TRADE CONDITIONS.

ONTARIO.

It would be difficult to conceive of conditions more favorable to the lumber trade than those which now exist. Lumber, whether white pine, hardwood or hemlock, practically sells itself. Dealers are booking large orders in advance of production and anticipate a steady trade throughout the year. In some instances orders for dry stock have been turned down on account of the scarcity in the supply of certain grades and sizes. There is no change to report in prices, for the reason that manufacturers as a whole are not taking advantage of every opportunity to boost values. Individual advances have been made on some lines, but the general policy seems to be to keep prices near the present basis and thus prevent, if possible, a curtailment in consumption. The outlook for building operations is favorable. In Toronto and Hamilton a number of large buildings are projected. In some quarters fear is expressed that labor difficulties may interfere with building to a slight extent, but on the other hand there seems to be a disposition on the part of employers to meet all reasonable demands. Considering the large percentage of the white pine lumber production of this province

which has already been contracted for by United States buyers, it seems certain that the demand this season will be large enough to consume all available stock. In sympathy with the United States market, lath prices are no more than holding firm. Shingles are exhibiting the usual strength incident to the approach of the spring season.

QUEBEC AND NEW BRUNSWICK.

The strength of the spruce market is due largely to the active demand for lumber for shipment to the Eastern States. Spruce has to some extent replaced white pine, and it is anticipated that more than the usual quantity will this year find a market in the United States. By some it is predicted that prices will advance sharply before the new cut is in shipping condition. European trade is still somewhat uncertain. Shippers are indisposed to pay the high prices asked by manufacturers until they are more certain that prices in the British market will be maintained. Some purchases of South American specifications have recently been made at good figures. Present indications point to an early resumption of sawing operations. With a continuance of favorable weather conditions logs will be in the brooks and driving operations started by the first of April.

MANITOBA AND BRITISH COLUMBIA.

Remarkable activity characterizes the lumber industry of Western Canada. The prediction is made that the mills will not be able to supply the demand, but it does not seem probable that a dearth of lumber will be experienced. The large number of new mills that have been erected in British Columbia would seem to be sufficient to supply the increased demand arising from settlement in Manitoba and the Territories. Some fear is expressed that building operations will be hampered by labor difficulties, the carpenters of Winnipeg having already submitted an ultimatum to the contractors notifying them of a demand for an increased scale of wages.

UNITED STATES.

A heavy demand from Chicago for low grade white pine boards has developed. Buying in the Minneapolis district has reduced the supply to such a point that box manufacturers fear a famine in dry stock suitable for their purposes. Reports from manufacturers indicate that they are short of almost everything except No. 1 and No. 2 boards. This somewhat unexpected demand for the lower grades has created additional confidence in market conditions and brought about a buying movement on the part of dealers. Inquiries for stock to be shipped upon the opening of navigation have increased in lumber, notwithstanding that prices are about two dollars higher than at the opening of navigation one year ago. It is claimed that prices at eastern wholesale centres are still low when compared with the figures asked by manufacturers. A Buffalo dealer gives the following prices at which he sells inch white pine: Uppers, \$80; selects, \$70; fine common, \$58; No. 1 cuts, \$42; dressing, \$38; 12-inch No. 1 barn, \$32; No. 2 barn, \$27;

No. 3 barn, \$23; 12-inch box, \$20. These prices are said to represent no more than a fair margin of profit.

The hardwood market is in a very satisfactory condition. Inch quartered white oak has sold at unprecedented prices. Basswood leads in point of strength and scarcity, followed closely by elm. Maple is in moderate supply only, thick sizes being quite scarce.

Lath is slightly weaker and off-rings are more plentiful. In the Saginaw Valley No. 1 pine lath are held at \$3.75 and No. 2 at \$3.25. In Chicago quotations are \$3.50 for No. 1, \$3 for No. 1 Norway, and \$3.15 to \$3.25 for No. 1 mixed.

GREAT BRITAIN.

The deadlock between the shippers and the British importers still exists. Much less than the usual quantity of stock has been contracted for. It is considered only a question of a short time before sellers and buyers will come together, although it is difficult to judge as to which side will give way. The conditions seem to favor the shippers, and particularly in respect to the Canadian supply, which will be unusually light on account of the large demand at home and in the United States. There is no change to report in white pine deals. A considerable quantity of red pine deals, 3x9, 4x9 and 3x11, have been placed for shipment from Montreal. The spruce market is steady. The stock of spruce deals in the Surrey Commercial Docks, London, is under half a million pieces. Agents of Canadian exporters are holding out for £9 15s c.i.f. London for 3x9 second quality spruce, £9 5s for third quality and £8 15s for fourth quality. It is reported that in one or two instances these prices have been shaded slightly, but this has been due to the inferior quality of the stock offered. At recent public sales second quality 3x9 spruce brought £10 5s, third quality £9 15s and second quality 3x7 £8.

STOCKS AND PRICES.

The Brompton Pulp & Paper Company took out about 12,000,000 feet of logs this season for their pulp mill at Brompton Falls, Que.

At Thomson Station, N. S., lumbering operations this season are unusually brisk. About 3,000,000 feet of lumber is now ready for shipment.

White pine shingles are held in the Saginaw Valley at \$4.35 for XXXX and \$3.25 for clear butts. White cedar 18-inch XXXX are quoted at \$4 and butts at \$2.75.

The Ontario Power Company, of Niagara Falls, Ont., is using California redwood for the construction of its pen-lock. It is estimated that 6,000,000 feet will be required.

Considerable logging has been done this winter on the Salmon river in British Columbia, and some 3,000,000 feet of logs are now awaiting high water for transportation to the Columbia River Lumber Company's mill at Kwall.

Reports from the lumber camps in the Riding and Duck Mountains of Manitoba are to the effect that the past winter was

the most favorable for years for getting out logs. The number of men engaged in the camps was double that of other years, and the output of logs will be the largest in the history of the district.

O. E. Elsmore, of Bay City, Mich., has recently been in the Sudbury district and reports that the following quantities of logs have been banked on the north shore in Spanish River waters: Saginaw Lumber & Salt Company, 28,000,000 feet; N. N. Wright & Co., 30,000,000 ft.; Victoria Harbor Lumber Co., 10,000,000 ft.; Turner Lumber Co., 8,000,000 ft.; Spanish River Lumber Co., 12,000,000 ft.; Edmund Hall, 15,000,000 ft.; Holland & Graves, 25,000,000 ft.; Cleveland & Sarnia Saw Mills Co., 20,000,000 ft.; Moulthrop Lumber Company, 8,000,000 ft.

The Edward Hines Lumber Company, of Chicago, last week closed negotiations at Marinette, Wis., for the purchase of 80,000,000 feet of lumber, represented by two transactions. The first purchase consisted of the cut of the two mills of the N. Ludington Company, aggregating 50,000,000 feet of white pine lumber, 15,000,000 shingles, and 20,000,000 laths, the purchase price being approximately \$1,000,000. The second purchase was the cut of the Marinette mill of the H. Wilbeck Company comprising 30,000,000 feet of white pine lumber. These purchases comprise practically two-thirds of the combined output of the Marinette and Menominee mills.

Under date of February 28th Messrs. Clairmonte, Man & Company say of the Barbadoes market: We note two arrivals with lumber during the fortnight, a schooner from Annapolis, N.S., with 173,000 feet white pine, spruce and hemlock, and a schooner from Bellevue Cove, N.S., with 160,000 feet spruce. The cargo of the former was sold to arrive at \$26 for first and \$21 for second quality white pine, and \$23 and \$20 for spruce. The cargo of the latter brought \$22.50 for first and \$19.50 for second quality spruce, and \$8.00 long hemlock shingles brought \$2.40. Our yards are still barely supplied, as during our crop season, just commenced, there is always a good demand. There has been no arrival of shingles since October. Last sales were made at \$4.89 to \$5.04 for Gaspé Long Cedar and are now worth more. Cedar Laying are selling at \$1.82 and Spruce Laying at \$1.65 to \$1.70.

LUMBERING OPERATIONS IN NEW BRUNSWICK.

R. A. Estey, of Fredericton, has completed his season's operations on the Tobique river, also a successful season's work on the Rockaway, Madawaska county. Mr. Estey's season's cut will be about 7,000,000 feet.

Herbert Hay, of the firm of W. A. & J. H. Hay, of Millville, has just completed operations on the Baccaguimac river, where he cut 1,500,000 for A. H. Sawyer, of Hartland.

Josiah Hallett, of Millville, has finished his season's operations on the Nashwaak, where he cut 2,000,000 for the Alexander Gibson Company.

Hilyard Bros., of St. John, have taken out about 6,000,000 feet.

J. J. Hale, Donald Flower & Sons, and other large lumber operators on the Tobique are already hauling supplies into their camps for next season and are experiencing considerable difficulty on account of the heavy condition of the roads. The Burns Company, of Bathurst, are hauling supplies through from the Tobique to the Bathurst river.

H. M. Craig, of Perth Centre, who has been operating for the Tobique Manufacturing Company, on Sisson Brook, cut 2,000,000 feet this winter.

TRADE OPENINGS.

The following where among the enquiries relating to Canadian trade received at the Canadian Government Office in London during the week ending 14th February, 1903. The names of the parties may be obtained from the publishers of this journal.

A London importer wishes to get into touch with a Canadian shipper of wood chimney pieces, etc.

BIRCH SQUARES AND SEATS.

A large buyer of Birch chair seats and of Birch squares is open to contract with a mill for their output. Also open for Broom Handles and Dowels in large quantities. Write in first instance to "Finance," care of CANADA LUMBERMAN.

THE CLEVELAND-SARNIA SAW MILLS CO., LIMITED SARNIA, ONT.

Manufacturers and
Wholesale Dealers in

**Band-Sawed Timber
and Lumber
White Pine Lath**
Daily capacity 250,000 feet

Special bills cut to order in

**WHITE PINE
RED PINE
HEMLOCK
and FIR**

CORRESPONDENCE SOLICITED

Orillia Planing Mills

and Sash and Door Factory
Near G. T. R. Station.

PLANING, MATCHING AND RE-SAWING

Done in any quantity. We guarantee satisfaction. Write for prices. Address,
S. POMEROY, Box 428, Orillia.

Bulmer McLennan & Co.

EVERYTHING IN
LUMBER AND TIMBER

Rough or Dressed Wholesale and Retail
Office and Yard:

571 Dorchester St., Montreal, P. Q.
Telephone Main 348 Correspondence Solicited

Quebec
Montreal
Ottawa
Three Rivers

DOBELL, BECKETT & CO.,
TIMBER, DEAL and LUMBER EXPORTERS.

London, Eng. **RICHARD R. DOBELL & CO.,**
110 Cannon Street, E. C.

QUEBEC.

LONDON.

ENG.

H. R. GOODAY & CO.,
SPRUCE AND RED PINE EXPORTERS

AGENT..

FOY, MORGAN & CO.,
104 and 106 Bishopsgate St. W., E. C.

THE HEMLOCK SITUATION.

Western manufacturers of hemlock, according to the American Lumberman, are reporting flattering conditions prevailing in the various departments of their industry and from all accounts the coming season promises to be one of the most active that the manufacturers have ever enjoyed. Dry stocks are exceedingly low and broken in assortment. Shippers are greatly bothered by the scarcity of cars, which, while annoying, should in a measure conduce to the strengthening of market values. The volume of sales is steadily increasing as the season advances, although operations are at a standstill in some sections owing to the bad condition of the country roads.

A manufacturer who has made a careful survey of the situation confidently predicts that there will be a substantial increase in the quantity of hemlock sold during 1903, which he thinks will be greater than for any year previous to this, estimating the expected increase at from 25 to 35 per cent. over previous seasons. He gives as a reason for this that stocks are already in favorable demand, that norway piece stuff is scarce and will continue so, and that the spread in prices is greater in comparison with other woods used for construction purposes than it has ever been since accurate data on the subject have been secured. Occasionally it is noted that some of those who are selling hemlock on a commission basis are able to find a soft spot here and there, but no particular attention is paid to this by the larger manufacturers, as they are able to dispose of their stocks without difficulty to the country trade at list prices, and the surplus, when any exists, is well cared for in Chicago and the larger markets. More hemlock is going into the country trade this spring than had been counted on and but for the temporarily low prices that are being made on yellow pine dimension hemlock would doubtless find no difficulty in reaching territory that heretofore has been regarded as a natural absorbent of the southern stock. Even as it is, hemlock distribution is steadily expanding through the western and middle states, and its position for future development is regarded as entirely satisfactory by hemlock manufacturers in all sections.

FIRES.

The saw mill of Higgins Bros. at Metcalfe, Ont., was destroyed by fire on March 9th. The loss is \$3,000, with no insurance.

The shingle dry kiln of the Royal City Mills at New Westminster, B. C., was burned recently, together with a quantity of shingles.

TELEGRAPH POLES WANTED

We buy all lengths. Write us for prices and you will see that by cutting your Cedar into Poles it will net you more than you can get out of it in any other way.

J. B. FARWELL & SON
Successors to McCaffrey & Farwell.
Orillia, Ont. Oswego, N. Y.

CANADIAN NORTHERN RAILWAY CO.

The route via Chicago, St. Paul and Canadian Northern Railway is the way you should travel when going to Winnipeg and other Manitoba points. Finest Pullman Sleepers, Cafe, Reclining Chair and Library Cars. Choice of lines between Chicago and St. Paul. Tickets can be obtained from all Railway Agents.

Folder and Pocket Map of the Canadian Northern Railway will be sent upon application to R. H. BELL, Trav. Freight & Pass. Agent, Room 202 Merchants Bank Bldg., Montreal, Que. WM. PHILLIPS, General Eastern Agent, 32 King Street East, Toronto. GEO. H. SHAW, Traffic Manager, Winnipeg, Man.

SCRIBNER'S LUMBER AND LOG BOOK

A handy book for Lumbermen. Gives Correct Measurements of Scantlings, Boards and Planks; Cubical Contents of Square and Round Timber; Doyle's Rules, and much other practical information.

Address: **PRICE 35 CENTS.**
The Canada Lumberman
TORONTO, ONT.

PINE LUMBER **Get our Prices** HARDWOOD LUMBER

THE ORILLIA EXPORT LUMBER CO.

High Grade Pine, Rough or Dressed

British Columbia Red Cedar Shingles a specialty

LATH **ORILLIA, ONT.** SHINGLES

KNIGHT BROTHERS CO. KILN-DRIED BIRCH FLOORING

HEMLOCK SOFT & ROCK ELM, BASSWOOD, BIRCH, WHITE PINE, PLAIN SAWN MAPLE, BLACK ASH, CEDAR, PINE.

WHOLESALE Hemlock Hardware

OWEN SOUND, ONT.

"We are now cutting two million Hemlock, 22 to 24 feet long, and we solicit your business under special conditions"

Write for particulars.

THE IMPERIAL LUMBER CO. LIMITED
RED AND WHITE PINE DEALS

MASON, GORDON & CO.
WHOLESALE TIMBER
Montreal, Quebec

Eastern Agents The B.C. Mills, Timber & Trading Co., Vancouver, B.C.
DOUGLAS FIR Timber in any size or length supplied
WRITE FOR PARTICULARS AND QUOTATIONS.

For Sale

Cascapedia and Skimenac Rivers. Saw Mill, Timber Limits and Water Power. Price reasonable

H. M. SIMPSON,
39 Canada Life Building,
189 St. James Street - MONTREAL

FOR SALE.

A number of very valuable pine and other timber limits on the north shore of Lake Huron and elsewhere for sale. Also limits bought and sold on commission and estimates given. For particulars, apply to

P. McDERMOTT,
Box 177, South River, Ont.

J. D. SHIER LUMBER CO., LIMITED,
BRACEBRIDGE, ONT.

MANUFACTURERS OF
LUMBER, LATH AND SHINGLES

Pine, Hardwood and Hemlock Floorings and Ceilings. Sash and Doors, Wood Turnings, etc. All Dressed Lumber Kiln Dried if desired. End Matched Flooring a Specialty. Planing Mill in connection.

CACHE BAY LUMBER INDUSTRIES.

Geo. Gordon & Co.,

Manufacturers of RED and WHITE PINE

Band - Gang **LUMBER**
Circular **AND LATH**

CACHE BAY, Ont. 26 miles West North Bay, C. P. R.

CACHE BAY PLANING MILL CO.

... MANUFACTURERS OF ...

CROSS ARMS
MOULDINGS
CEILING
FLOORING
WAINSCOTING
SHEETING

And all kinds of Dressed Pine Lumber.

THE ONTARIO LUMBER CO. LIMITED

MANUFACTURERS OF
WHITE PINE LUMBER, LATH AND SHINGLES.

Mills: North Bay, C.P.R. and G.T.R. Delivery.

35 and 36 Home Life Building
MILLS: French River, Georgian Bay. Water Shipment Only.

Veneers, Hardwoods, Ash, Elm, Birch, Basswood—Clothboards—Cheese Box Bands and Rims.

THE PATENT CLOTHBOARD CO., of Ferry Sound, Limited, Ferry Sound, Ont.

AUGER & SON - Quebec
PULP WOOD AND TIES

Bought at Any Station.

Also Dimension Timber, Sawed to Sizes, Telegraph Poles and Lumber.—Write Us.

KNIGHT BROTHERS CO. Send for Catalogue & Samples by Mail

F. MCGIBBON & SONS, PENETANGUISHENE ONT.
Manufacturers of Pine, Hemlock and Hardwood Lumber, and dealers in Cordwood Hemlock Bills cut on short notice.

A. F. BURY AUSTIN
WHOLESALE LUMBER and TIMBER
CANADA PINE

Room 507, Merchants Bank of Canada Building - MONTREAL, CANADA
SPECIALTIES: Railway Bridge Timber and all kinds of Hardwoods; Ship Decking, Norway and White Pine, Dimension Timber, Railway Car Bldg., Car Flooring, Telegraph Poles, Railway Ties, Oak and Whiteoak, Plank and Rough Lumber, British Columbia Pine, Southern Pine, etc.; Best Flooring, house work, and better.

Sole Eastern Agent for The North Pacific Lumber Company, Limited, Barnet, B. C.
Douglas Fir Timber in any size or length up to 90 feet long. Timber Planers face up to 24 inch x 30 inch Dry Kilns of large capacity. Rough and Dressed Lumber, Douglas, Fir and Cedar.
WRITE FOR PARTICULARS AND QUOTATIONS.

TIMBER LIMIT TRANSACTIONS.

It is announced that the Rat Portage Lumber Company has purchased the timber limits and saw mill of W. L. Tait at Vancouver, B.C., the consideration being \$100,000.

H. M. Whitney, of Boston, and B. F. Pearson and H. J. Crowe, of Halifax, N. S., are organizing a lumber company to be capitalized a \$2,000,000. The field of operation will be Newfoundland, where timber limits and saw mills have been purchased.

THE GLASGOW MARKET.

From Edmiston & Mitchell's monthly timber circular we extract the following: Business during the month of February has been fairly active at firm prices, and the few shipments of pine and spruce deals which came to hand via St. John and Portland were for the most part promptly disposed of from the ships' side. The position of the market as regards pine is very strong, and a fair amount of business has been done in contracting for delivery during the coming season, but in spruce there has not been the same activity, buyers not responding as readily to shippers' prices as in the case of pine. Sidings continue scarce, and are in active demand, and the same remark applies to broad 1st quality pine deals.

In American hardwoods a steady business has been passing, and values of poplar and quartered oak lumber continue

firm, a remark which equally applies to good walnut and oak logs.

Deliveries from stock have been well maintained during the month, and everything denotes general activity in the trade.

The Clyde shipbuilding returns show that 29 vessels aggregating about 42,000 tons were launched, compared with 16 vessels, of about 41,000 tons, in February, 1902. In new work it is gratifying to state that several vessels have been placed within the past few weeks, and, now that the threatened strike has been averted, the prospects of this important industry are more satisfactory.

In housebuilding there is also considerable activity in the city and neighborhood.

WHITE OR YELLOW PINE.—Business during the month has been fairly active, and quite a number of big parcels have changed hands during the month. We hear of 80 logs 1st class waney, about 2300 feet per page, having been sold to a shipbuilder at 4s. 3d. per cubic foot; about 400 loads 2nd class waney, about 1200 feet per page, at 2s. 7d. per cubic foot; and 3-400 loads 1st class square, 40-foot average cube, at 2s. 7d. to 2s. 8d. per cubic foot. The stock of waney in first hands is low, but there is an ample supply of square wood.

RED PINE.—There have been no sales to report, as stock in first hands is exhausted. An early consignment of good-sized wood would meet with a ready sale.

OAK.—There has been very little en-

quiry during the month, and no transactions of importance. Stock is ample, and is moving off slowly.

ELM.—There have been a number of enquiries during the month, and several lines of 1st class rock have been placed at prices round about 3s 1d to 3s 2d per cubic foot. We hear also of a parcel or two of soft elm having been cleared at 1s 3d per cubic foot.

BIRCH.—Quebec—There has been no import so far this year of either logs or planks, but it is reported that there are some logs due shortly via Portland, which have been sold to arrive. The position of the market is firm, and values about 19d for 15-inch up to 2s for 17 to 18-inch average. There is little or no demand for small wood, but several enquiries for 16-inch average. Lower Port—There is no stock of logs on hand and the nominal value is round about 17d to 18d for 15-inch average. Planks—Stocks are heavy and prices are unaltered at about 11d per foot for ordinary Halifax planks.

ASHT.—There is nothing of importance to report, the only movement being an occasional retail transaction in logs and lumber. Prices are round about 1s 6d for 12½ inch up to 2s for 14½-inch average.

DEALS, ETC.—Business during the month has been of a fairly active character and deliveries from the public yards are well maintained. First pine deals and sidings are much enquired for, and those arriving per liners are keenly com-

peted for by buyers. Current values are as under:—Broad First Pine Deals, £32 to £34; 21-inch, £29 to £31; ends and non-dimensions, £22 to £24. Second Pine Deals—11-inch and up, £19 to £21 10s; ends and non-dimensions, £13 to £14 10s. Third Pine Deals—11-inch and up, £13 to £14 10s; ends and non-dimensions, £10 to £11. Red Pine Deals—9 and 11-inch, £11 10s to £12 10s; narrow, £8 10s to £9 10s. First Pine Sidings—9 and 10-inch, £24 to £25; 11 to 12-inch, £26 to £28; 13 to 14 inch, £29 to £31. Spruce Deals—9-inch and up, £8 15s to £9 10s; 7 and 8 inch, £7 5s to £8 5s. Lower Port Pine and Spruce—7 and 8 inch, £7 to £7 15s; 9-inch and up, £8 5s to £8 15s.

CANADIAN LUMBER SHIPMENTS.

From Chemainus, B. C.: Barque Ancona, for Cape Town, 1,950,802 feet rough lumber, value \$21,692, by Victoria Lumber & Manufacturing Company.

From St. John, N.B.: Steamer St. John City, for London, 7,920 bundles box shooks, by A. Gravel Lumber Company; 285,487 feet deals, by W. Malcolm Mackay; 47 cases veneer, 8,075 feet birch plank, 2,080 bundles shooks, by William Thomson & Company. Schooner Sarah C. Smith, for New York, 1,085,000 laths, by Stetson, Cutler & Company. Schooner H. A. Holder, for Boston, 100,971 feet boards, 22,357 feet plank, by A. Cushing & Company. Schooner Lotus, for Boston, 68,370 feet boards, 42,703 feet plank, 33,896 feet scantling, by A. Cushing & Company. Schooner Annie Bliss, for Vineyard Haven, 1,652,800 laths, by Stetson, Cutler & Company.

UNITED STATES MANUFACTURERS AND WHOLESALERS

Bradley, Miller & Co., West Bay City, Mich.

WE BUY WHITE PINE AND NORWAY LUMBER LATH AND SHINGLES



WHITE PINE

Special Timber Bills, Red Cedar Shingles, Yellow Pine
We are in the market to buy from a car-load to the season's cut of any mill. We are also large buyers of White Pine Lath.

RIB RIVER LUMBER CO.

Yards and Main Office, TOLEDO, OHIO

WE MAKE A SPECIALTY OF
MAPLE FLOORING

—AND—
WHITE CEDAR SHINGLES

We would be pleased to receive your enquiries for our SPECIAL PRICES.



Owen T. Jenks Co.

WHOLESALE LUMBER
Cleveland, - - Ohio.

Mills at Oway, Mich.

THE ROBERT H. JENKS LUMBER CO.

CLEVELAND, OHIO

MANUFACTURERS AND WHOLESALERS OF

YELLOW PINE, POPLAR, HEMLOCK AND HARDWOODS

Yellow Pine Timbers a Specialty

WE ARE IN THE MARKET

FOR

Basswood 1, 1½ and 2 in.

Birch 1, 1½, 2, 2½ and 3 in.

Rock Elm 1½, 2, 2½ and 3 in.

Black and White Ash 1, 1½, 2, 2½ and 3 in.

Will buy any of above kinds of Lumber on National Rules of Inspection, and will take shipping Call, Common and 1st and 2nd Clear. **TERMS NET CASH.** Quote price either f.o.b. Milwaukee or Rail of Vessel or f.o.b. cars at shipping point; if latter give rate to Milwaukee.

Quinnesec Log & Lumber Co.,

105 GRAND AVENUE

MILWAUKEE, WIS.

ONE DOLLAR

Will Pay your Subscription to the Weekly and Monthly CANADA LUMBERMAN for

ONE YEAR

MIXER & CO.

BUFFALO, N. Y.

We are in the market for 16 inch XXXX and XX White Pine Shingles for early shipment, or will contract.

H. D. WIGGIN BOSTON, MASS.
89 STATE ST

will inspect at mill and PAY CASH for

LOG RUN

Elm, Ash, Bass and other Hardwoods
CORRESPONDENCE SOLICITED.

A Gard in the Canada Lumberman seems like extending the hand of reciprocity.

If it should lead to an acquaintance enabling us to buy or sell lumber, we will be satisfied.

We are in the business of handling
**WHITE AND YELLOW PINE
HEMLOCK, LATH AND SHINGLES.**
MANN, WATSON & CO. Muskegon, Mich.

SPOT CASH PAID

for thick Maple 2½", 3" and 4", 1sts and 2nds, and No. 1 Common.
Also Birch, Elm, Basswood and Butternut.
Write us to-day.

TAYLOR & CRATE
249 Elk Street
BUFFALO, N. Y.
Mention Canada Lumberman.

Eddy Bros. & Co., Limited.

Saw Mills, Blind River, Ont.
Head Office, Bay City, Mich.

WHITE PINE and NORWAY LUMBER.

MERSON, SCHUETTE, PARKER & CO.
Saginaw, Mich.

**WHITE PINE LUMBER, BOXES,
SASH, DOORS AND BLINDS. . .**

SAGINAW LUMBER & SALT CO.

MANUFACTURERS OF

LUMBER AND SALT

Mills at Sandwich, Ont.

- FRANK A. CUTTING -

BUYER OF



Hemlock Bark

And the only Dealer who can furnish Cutting Patent Bark Cars for Shippers.

Merchants Bldg., 79 Summer St., BOSTON, MASS.

CANADIAN MANUFACTURERS and WHOLESALERS

PEMBROKE LUMBER CO., Pembroke, Ont.

Our unsold stock consists of Dimension Piece Stuff in Pine, White Pine Ship Decking, and about two million of 1", 1 1/4", 1 1/2" and 2" White and Red Pine Lumber. We handle everything in Pine from Match Blocks to Ship Spars.

JOHN HARRISON & SONS COMPANY, LIMITED

Manufacturers of Railway Ties and Timber, Pine, Hemlock, Cedar and Hardwood Lumber, Sash, Doors, Flooring and Siding. Highest grade of planing mill work. Maple flooring kiln dried, end matched, hollow backed, bored and polished.

HEAD OFFICE, SAW AND PLANING MILLS, OWEN SOUND, ONT.

The Pearce Company

Limited

MARMORA - - ONTARIO

WRITE US FOR PRICES ON HEMLOCK BILL STUFF.

When in the market for Pine or Hardwood

Lumber

Write or telephone us

THE OLIVER LUMBER CO., OF TORONTO, LIMITED

84 Canada Life Building, Toronto. - Tel. Main 858.

RHODES, CURRY & CO., Limited

LUMBER MERCHANTS.

Yards at Amherst, Little Forks, Sydney and Halifax.

BUILDING MATERIAL of all kinds carried in stock. We are buyers of Ontario Basswood, Elm and Pine.

Amherst, N.S.

Sawn and Hewn Spruce, Hemlock, Pine and Birch Timber, Spruce and Pine Boards and Plank, Birch and Ash Boards and Plank, Flooring, Shingles, etc.

JAMES J. MURPHY, Bank of Commerce Building QUEBEC

BOOTH & SHANNON, BISCOTASING, ONT.

MANUFACTURERS OF

PINE LUMBER, LATH AND SHINGLES

Have in stock for immediate shipment a quantity of Norway Pine Log Run.

Dear Sirs:

18 Toronto Street, March 18, 1903.

Owing to continued shortage of car supply, we would advise you to order early what lumber you require for spring trade.

Yours truly,

R. LAIDLAW LUMBER CO.

JAS. PLAYFAIR & CO.

Manufacturers and Wholesale Dealers

LUMBER • LATH • SHINGLES

Contractors for Railway Supplies BILL TIMBER a Specialty . . .

MIDLAND, ONT

A. & P. WHITE

Manufacturers of and Dealers in.....

Sawn and Planed Lumber, Dimension Timber, Joisting, Car Sills, Car Flooring, Shingles and Lath.

PEMBROKE ONT.

A quantity of 6x8, 6x6, 6x4, 6x2, 8x10 and 10x12x18 ft. and up White Pine Dimension Timber, for sale

Robert Watt, Warton, Ont.

Manufacturer and Wholesale Dealer in lumber of all kinds, Pine Lath, Cedar Shingles and Cedar Posts, Dressed Pine and Hardwood Flooring. Cedar and Hemlock Bill Stuff cut to order. Shipment by rail or water. Special lots for sale - 1 car of 4x4, 1 car of 3x6, 1 car of 3x4, Maple, Beech and Birch hearts suitable for machinery skids and car stakes. 1/2 car of 5/4 cull birch, 1 car of 4/4 cull birch, 1 car of 4/4 cull Maple, 1 car of 3x2 inch, and 2 cars of 4 foot Lath, Pine, Cedar and Hemlock mixed (the percentage of Hemlock and Cedar is small), 1 car of 10 and 12 foot Cedar Posts 2 inches and up at the top end, three thousand feet of 5x8, 6x6, 6x4, 8x10, 10x10, and 12x12 Cedar from 12 to 18 feet long, 4 cars of 4/4 Hemlock Siding No. 1, 2 cars of 4/4 Hemlock Siding No. 2, 4 cars 6/4 and 4 cars 8/4 Cull Maple, and 2 cars 6/4 Cull Beech, and 1 car 2x6-12 Hemlock.

MAITLAND, RIXON & CO. OWEN SOUND, ONTARIO.

Manufacturers and Dealers

LUMBER, LATH, TIES, POLES, SHINGLES, ETC.

Make a Specialty of Long Pine, Cedar and Hemlock Bill Stuff.

WILLIAMSON & MORRISON

Mills at L'Orignal, Ont.

LUMBER

HEAD OFFICE: 30 St. John Street, MONTREAL, P.Q.

WHOLESALE

Turner Lumber Co., Limited

MANUFACTURERS

LUMBER and LATH

Shipments by Rail or Water.

Midland, Ont.

Cable Address: GILMOUR, TRENTON

MAIN OFFICES: TRENTON, ONTARIO

A B C CODES: LUMBERMAN'S ZEBRA

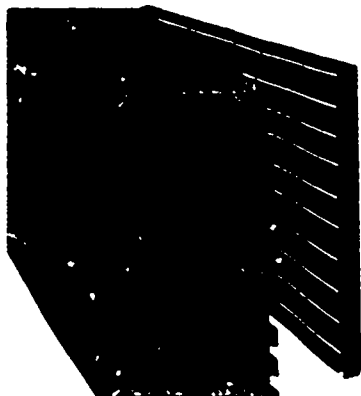
ESTABLISHED 1820

ESTABLISHED 1820

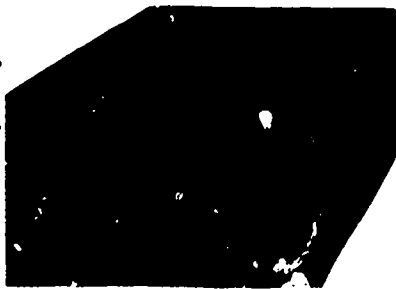
GILMOUR & CO., LTD.

TRENTON, CANADA

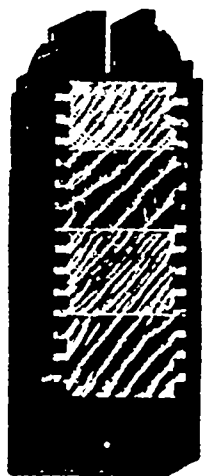
BRANCH OFFICES IN: London, Eng. New York Chicago Glasgow Capetown, S. Africa Sydney, Australia



SECTION SHOWING PROCESS



SECTION PATENT LUMBER



STILE SECTION

Saw Mills, Patent Lumber, Door, Sash, Box and Veneer Factories

Capacity of Mills and Factories 25,000,000 feet per year

OUTPUT: 300,000 DOORS Per Year.

Manufacturers of—SASH, DOOR and BOX FACTORY GOODS, LATH, SHINGLES, RAILROAD TIES, TELEGRAPH POLES and POSTS, JOINERY, FINE INTERIOR FINISH, HARDWOOD FLOORING, Etc. EGG CASES, EGG FILLERS. Write or Wire for Samples and Price Lists.

Responsible Agents Wanted in all Parts of the World

ORDERS PROMPTLY FILLED

GILMOUR & COMPANY, LIMITED

TRENTON, CANADA

THE BOSTON MARKET.

Spruce lumber at Boston is firm with little change in prices, though higher prices are being asked on 9-inch frames. Some of the spruce mills have shut down, and there is less competition for trade. A good spring business is looked for. Prices are steady and unchanged: Ten and 12-inch dimensions, \$21; 9-inch and under, \$18.50 to \$19; 10 and 12-inch random lengths, 10 feet and up, \$20.50; 2x3, 2x4, 2x5, 2x6, 2x7, and 3x4, 10 feet and up, \$17 to \$17.50; all other randoms, 9-inch and under, 10 feet and up, \$18 to \$18.50; 5-inch and up, merchantable boards, \$17; matched boards, \$18 to \$20; out spruce boards, \$13 to \$14; bundle furring, \$17.

Hemlock lumber is in fair demand, with prices firm and unchanged: Boards, 12, 14 and 16 feet stock, \$14.50 to \$15 for good eastern; Pennsylvania, No. 1, \$18.50 to \$19.50; No. 2, \$15 to \$16.50.

There is still a firm market for western pine, with a good demand: Uppers, 1 to 2 inch \$84 to \$87; 2 1/2 to 3 in. \$92 to \$97; 4-in. \$96 to \$100; se-

lects, 1 in. \$-; 1 1/4 to 1 1/2 in. \$76 to \$78; 2-in. \$78; 2 1/2 to 3 in. \$84; 4 in. \$86; fine common, 1-in. \$67; 1 1/4 to 1 1/2 in. \$69; 2-in. \$72; 2 1/2 to 3 in. \$80; 4-in. \$82; barn boards, \$23 to \$33; coffin boards, \$28 to \$32.

Hardwood lumber is very firm, especially for quartered oak and white-wood. The supply is not large and the demand is good. Prices are firmly held at: Quartered oak, \$75 to \$83; plain oak, \$45 to \$47; common and rejects, \$20 to \$25; red oak, plain, \$43; whitewood, \$51 to \$57; sap and common, \$38 to \$45; brown ash, \$41 to \$44; white ash, \$43 to \$46; maple, \$33 to \$37; end-dried white maple, \$46; birch, \$27 to \$30; birch, 75 per cent. red, \$45 to \$50; elm, \$45 to \$50.

Shingles are steady, without change in price: Extra cedar at \$3.35 to \$3.45; clear, \$2.85 to \$2.95; second clear, \$2.30 to \$2.40; extra No. 1, \$1.75 to \$1.80; British Columbia red cedar, 16-inch, five butts to 2 inches, \$3.50 to \$3.60; 18-inch, five butts to 2 inches, \$4.25; five butts to 2 1/2 inches, \$4.50.

There is a firm market for spruce

clapboards, with a light demand. Stocks are very small: Extra, \$42; clear, \$40; second clear, \$37 to \$39; extra No. 1, \$30 to \$33.

Laths are quiet: One and five-eighths inch, \$3.15 to \$3.25; 1 1/2-inch, \$3.00 to \$3.10.

WANTED

MESSRS. JOSEPH OWEN & SONS, Ltd., of Liverpool, Eng., are open to treat for regular supplies of large quantities of HARDWOOD LUMBER, and will be glad to hear from holders who have to offer WHITE ASH, WHITE OAK, SCALY BARK and SECOND GROWTH HICKORY, POPLAR and WALNUT, in logs, planks and boards, also prime fresh BIRCH LOGS of large dimensions. Cable address, "Owen, Liverpool." A.B.C. code used

WANTED

1", 2 1/4", 1 3/4" Spruce Boards, averaging 6" to 7" wide.

JAMES W. SOUTHERN & SON
MANCHESTER, ENGLAND

Cable Address: LION 4, Manchester. A.B.C. code

FELBER, JUCKER & CO.
Lumber Importers

MANCHESTER ENGLAND

Invite offers from Lumbermen for . . . Spruce Deals and Battens, Spruce and Pine Flooring, Boards, Sashes, Mouldings, Dowels, Broom Handles, Chair Stock, Seats, etc. or any Woods suitable for English Market. Telegraphic Address: FELBER MANCHESTER.

ARTHUR RUSKIN FORTH
Lumber
1000 Broadway, New York
Telephone 1000

Cedar Cove Mill,
Vancouver, B.C.

E. H. HEAPS & CO.

Ruskin Mill,
Ruskin, B. C.

MANUFACTURERS OF

Lumber, Lath, Shingles, Doors, Mouldings, Etc.

SPECIALTIES :

AA1 HIGH GRADE CEDAR SHINGLES.

edar Bevelled Siding, Cedar Door and Sash Stock, cut to size, Cedar Finish, Base, Casing, Newels, Balusters, etc. Douglas Fir Timber up to 85 feet in length.



WOODS & SPICER
Limited
(Successors to Spicer Shingle Mill Co.)

MANUFACTURERS OF

**Red . .
Cedar
Shingles**

VANCOUVER, B. C.

**THE
HASTINGS SHINGLE
MANUFACTURING CO.,
LIMITED.**

Head Office : - VANCOUVER, B. C.

MILLS :

Shingle,	-	Whatcom, Wash.
"	-	Sumas, Wash.
"	-	Carroll Siding, Wash.
"	-	Nooksack, Wash.
" No 1	-	Vancouver, B. C.
" No 2	-	Vancouver, B. C.
Saw Mill	-	Vancouver, B. C.
Planing Mill	-	Vancouver, B. C.

BRITISH WOOD BROKERS AND IMPORTERS

FARNWORTH & JARDINE

Wood Brokers and Measure's

Cable Address "Farnworth," Liverpool. 2 Dale St., 71 Regent Road, BOOTLE, LIVERPOOL, ENG.

WRIGHT, GRAHAM & CO. Wood Brokers

Royal Bank Place, GLASGOW, SCOTLAND Cable Address: "Brakridge," Glasgow
Codes Used: Watkin's, Scott's, A.B.C. Lumberman's, Zebra; Private.

Agents for the sale of CANADIAN WHITE PINE AND SPRUCE, cut to all sizes—and all kinds of Hardwoods in Log, Lumber and Dimension Stock. Shipments to any of the principal ports in the United Kingdom or elsewhere handled to the best advantage.

Cable Address: SINGLETONS, Glasgow. A B C, A1 and Lieber's Codes.

SINGLETON, DUNN & CO. WOOD BROKERS
27 Union Street - GLASGOW

F. A. Lightbody & Co. WOOD BROKERS

3 Gordon Street - GLASGOW, SCOTLAND
Cable Address: "TENEBRIS," GLASGOW. Codes: A. B. C., A1, "Zebra" and Private.
Agents for CANADIAN WHITE PINE AND SPRUCE; Hardwoods in Log, Etc. Shipments handled to the best advantage to all ports in the United Kingdom. Correspondence Solicited.

CABLE: "ENERGETIC," LIVERPOOL

VERNON TRAVERS & GO. TIMBER BROKERS AND AGENTS

Contracts made between Shippers and Importers
1 Rumford Court, Rumford Place, LIVERPOOL

DEPTS: HARKING, LIVERPOOL, NEWCASTLE-ON-TYNE, HULL AND BRISTOL

JONAS SMITH & CO.

Telegraphic Address: MOULDING, LONDON ♦ 92 to 98 Belvedere Road, LAMBETH, S. E.
Moulding and Joinery Manufacturers, Etc. IMPORTERS OF . . . Pine Doors, Mouldings
Timber Merchants and Importers.

C. LEARY & CO. Wood Agents and Brokers

4 Lombard Court, Gracechurch Street, LONDON, E.C., ENGLAND.

MORGAN, GELLIBRAND & CO. WOOD AGENTS..

Established 1868.
Call Office: GERRARD in London. 20 Bishopsgate St. Within, LONDON, E.C.

LOUIS BAMBERGER, 2 Broad Street, LONDON, E. C.
IMPORTER OF ———— Telegraphic Address "Bellywood, London."
Pine, Spruce and all Canadian Wood Goods

Are Open to Contract for Glue-1 p BASSWOOD KEYBOARDS

ALFRED DOBELL & COMPANY WOOD AGENTS AND BROKERS

Liverpool, London, Chamber. LIVERPOOL, ENGLAND.

SMITH & TYRER - 14 Canada Dock, LIVERPOOL
.. WOOD AGENTS ..

Cable Address—"Walmer," Liverpool.
Halifax, N.S., Office—SMITH, TYRER & CO., Metropole Bldg., Hollis St., Halifax, N.S.

Edmiston & Mitchells TIMBER BROKERS

Cable Address: "EDMISTON" Glasgow. 33 Renfield Street, GLASGOW

GANT & KEMP TIMBER BROKERS
52 St. Enoch Square, GLASGOW

Cable Address: "TECTONA" Glasgow.
A1 and A B C Codes used.

CHURCHILL & SIM TIMBER BROKERS

Cable Address: "CHURCHILL" London. 29 Clements Lane, London, E. C.
Cable Address: "INVIGORATE" Liverpool. Albert Buildings, 11 Princess Row, Liverpool, Eng.

ZEBRA CODE A. B. C. CODE DIRECTORY CODE

GELLIBRAND, HEYWOOD & CO. Wood Agents and Brokers

Cable Address: "GELLIBRAND, CARDIFF," Western Mail Chambers, CARDIFF

Cable Address: "SPRUCE, BRISTOL."

ARTHUR BEACHAM WOOD BROKER
Surveyor, Arbitrator and Valuer.

OFFICES: 73 Que Square, Bristol. ♦ Avonmouth Dock and Bristol

BRYCE, JUNOR & WHITE, TIMBER BROKERS AND AGENTS,
CABLE ADDRESSES: Triguéal. Talleman. Moccasin.
BRISTOL. 26 Baldwin St. GLASGOW. 60 St. Enoch Sq. LONDON. 21 Basinghall St.

WILLIAM SUTCLIFFE, SONS & COMPANY Limited, of LIVERPOOL, ENGLAND
are open to represent a Canadian Firm not already represented in the District.

Cable Address:—"Comparison" Liverpool. "Western Union", "Zebra" and "Premier" Codes.

A. KENNEDY 48 West Regent Street - GLASGOW, SCOTLAND
BUYER OF BOX SHOOKS, SPRUCE AND PINE DEALS
Invites correspondence from Manufacturers for shipment per regular liners.
Cables "BIRCH," Glasgow. Directory, A B C and Zebra Telegraphic Codes.

Telegrams: "Burke, Belfast." Codes: A. B. C., Zebra Universal, Watkin's, Scott's & Private Codes
JOHN BURKE & CO. Wood Brokers and Merchants
Formerly H. ANDREWS & Co., (Established 1855)
BELFAST IRELAND.

Agents for Canadian white pine and spruce, cut to all sizes, and for all kinds of hardwoods in log, lumber and dimension stock. Shipments handled to the best advantage at all ports in Ireland. Correspondence solicited.

Consular Offices of Austro-Hungary, France, Italy, Portugal and Uruguay.

THOMPSON, BLOIS & KJELGREN ALL KINDS OF LUMBER AND LOGS

41 Corporation Street, MANCHESTER
17 Gracechurch St., LONDON, E.C. Brook, HAMBURG

CANADA ATLANTIC RAILWAY

Operating Ottawa & New York Lumber Line, Ottawa & Boston Lumber Line, Canada Atlantic Transit Company.

H. B. Mussen, Contracting Agent; M. A. Oyer, Foreign Freight Agent.

Shortest and quickest route from Ottawa, Montreal, Toronto, St. John's, etc. to New York, Boston, Philadelphia, etc.



THE NEW LINE

Through the Spruce Forests of the Laurentian Mountains—between Quebec and Hawkesbury. Water-Powers, Timber Limits and Electric Power for Sale. Ideal Pulp-Mill Sites.

J. G. SCOTT, Gen. Mgr.

QUEBEC

GUY TOMBS, G. F. & P. A.

DIRECTORY OF ADVERTISERS

- AXES: Campbell Bros., St. John, N. B.; Dundas Axe Works, Dundas, Ont.; Warneck & Co., Jas., Galt, Ont.
BELTING: Canadas Oak Belting Co., Brockville, Ont.; Durham Rubber Co., Bowmanville, Ont.
BABBITT METAL: J. T. Wieg, Detroit, Mich.; Syracuse Smelting Works, Montreal, Que.
DRY KILNS: A. H. Andrews Co., Chicago, Ill.; American Blower Co., Detroit, Mich.

- FILES AND RASP: Spence & Co., R. Hamilton.
LUMBERMEN'S SUPPLIES: Bekardt, E. P. & Co., Toronto; Gartsberg, John, Toronto.
LAFICANS: Palmer, John, Fredericton, N. B.; Sherry, J. P., Moncton, N. B.
LUMBERING TOOLS: Champion Tool & Handle Works, Evert, Mich.; Morley Bros., Saginaw, Mich.
MACHINERY: Bartlett & Snow Co., Cleveland, Ohio; Buffalo Tool and Machine Co., Buffalo, N. Y.

- Owen Saw and Iron Works Co., Owen Sound, Ont.; P. Payette & Co., Pennington, Ont.
OILS: Commercial Oil Co., Hamilton, Ont.; Queen City Oil Co., Toronto.
PULLEYS: Dodge Mfg. Co., Toronto, Ont.; Reeves Pulley Co., Toronto.
PULP AND PAPER MILL MACHINERY: The Jones Machine Co., Sherbrooke, Que.; The Waterous Co., Brantford.
PAPER AND PULP MILL ENGINEERS: Drewson Company, New York; Wallace, Joe H., C.E., Ottawa.
SAW MANUFACTURERS: Atkins & Co., E. C., Indianapolis, Ind.; Baine, E. H., Saw Co., Toronto, Ont.

- WAGONS: Adams Wagon Co., Stratford, Ont.; Massey-Harris Co., Toronto.
WIRE ROPE: Dominion Wire Rope Company, Montreal; Greening Wire Co., Hamilton, Ont.
MISCELLANEOUS: Alexander Engraving Co., Ottawa; Can. Office and School Furniture Co., Preston, Ont.

CURRENT LUMBER PRICES--WHOLESALE

Table with columns for 'TOKONTO, ONT.' and 'CAR OR CARGO LOTS'. Lists prices for various lumber types like 2x4, 2x6, 2x8, etc.

Table with columns for 'HARDWOODS--PER M. NET CAR LOTS'. Lists prices for ash, elm, maple, oak, etc.

Table with columns for 'OTTAWA, ONT.'. Lists prices for pine, spruce, fir, etc.

Table with columns for 'QUEBEC, QUE.' and 'ALBANY, N.Y.'. Lists prices for white pine, spruce, etc.

Table with columns for 'BAY CITY AND SAGINAW, MICH.'. Lists prices for various lumber types and shingles.

Table with columns for 'BUFFALO AND TONAWANDA, N.Y.'. Lists prices for white pine, spruce, etc.

Table with columns for 'SHINGLES' and 'WHITE PINE'. Lists prices for different grades of shingles and white pine.

Table with columns for 'UPPER AND SELECTS'. Lists prices for various grades of lumber.

Table with columns for 'WHITE ASH' and 'BLACK AND BROWN ASH'. Lists prices for different grades of ash lumber.