

THE
CARL S. MEACHAM

STREET AND
STREET CAR
DIRECTORY

OF
VANCOUVER, B. C.

1910

P. O. BOX 1328

PHONE 1733

E. G. BLACKWELL

Montreal Steel Works, Ltd.

Montreal Locomotive Works, Ltd.

Pecks Rolling Mills

American Steam Pump Co.

Dominion Wrought Iron Wheel
Company

Willamette Iron & Steel Works

Pedlar Metal Roofing Co.

Wm. Harland & Son

Office, 319 Fender Street

Warehouse, 821 Powell St.

VANCOUVER, B. C.

Cecil de C. S. Hoseason.

H. V. Claridge.

HOSEASON & CLARIDGE

PHONE 5478

**Real Estate
and Insurance.**

436 Richards Street

VANCOUVER, B. C.

Pemberton & Son

REAL ESTATE, INSURANCE

LOANS

J. D. Bell, Manager

Phone 1076

326 Homer Street

VANCOUVER, B. C.

Do not miss 5/1/58

SPAM
9076

STREET AND STREET CAR DIRECTORY

OF

Vancouver, British Columbia

Containing a complete Alphabetical List of All Streets,
Official Names, Location and Numbering System,
arranged so that a person can find any de-
sired number with the least possible
delay, either by walking, driving
or street car, and numerous
other Items of General
Information.



COMPILED AND PUBLISHED

BY

CARL S. MEACHAM

1910

COPYRIGHTED 1910 BY CARL S. MEACHAM

(All rights reserved)

PRICE 50 CENTS

MAIL JOB PRESSES, 167 PENDER STREET

Telephone Exchange 1155.

ROSS & HOWARD IRON Works Co., Ltd.

ESTABLISHED 1892.

**ENGINEERS IRON AND BRASS
FOUNDERS, BLACKSMITHS, PAT-
TERNMAKERS, BOILERMAKERS.**

Works—Woodland Drive. VANCOUVER, B. C.

British Columbia Market Company, Limited



**WHOLESALE AND RETAIL BUTCHERS,
COLD STORAGE MERCHANTS.**

Main Office—15 Alexander St., Vancouver, B. C.
VANCOUVER AND VICTORIA, B. C.

ROYAL NURSERIES & FLORAL COMPANY, Ltd.

Be sure and obtain our catalogues and prices before purchasing your Seeds, Ornamental Trees and Shrubs, Fruit Trees, Berry Bushes, Bedding Plants, Fertilizers and Insecticides, Cut Flowers, Design Work, Wreaths, etc. Visitors always welcome to Store and Greenhouses. (Sunday excepted.)

Store, 786 Granville Street. Nurseries and Greenhouses, Royal, B. C., B. C. E. Ry. (Lulu Island Branch).

James Brooks

Accountant, Auditor, Business Salesman,
Real Estate.

20 Years' Experience.

Manager The Anglo-Canadian Industrial and Investment Corporation, Limited, The B. C. Colonization Co. Reliable Investments.

Merchants Bank Bldg. Cor. Carrall and Hastings.

VANCOUVER, B. C.

J. MENZIES, D. McLEOD, C. H. CARNWATH,
President. Vice-President. Secretary.

FALSE CREEK LUMBER COMPANY, Limited

Manufacturers of PACIFIC COAST FIR, CEDAR
and SPRUCE LUMBER.

Phone 1900

Corner Oak Street and Sixth Avenue.

VANCOUVER, B. C.

MARRIOTT & FELLOWS

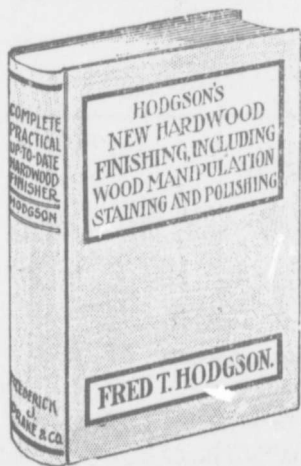
DEALERS IN

**City Realty, Suburban Properties,
Agricultural and Fruit Lands. Tim-
ber and Mines. Financial Agents
Fire Insurance Notary Public**

If this little book does not supply
all the information you may desire
about Vancouver and British Columbia,
come in and let us tell you the rest.

314 Hastings St. W. Vancouver, B.C.
PHONE 1077.

TECHNICAL BOOKS



WE SELL

**Hodgson's
TECHNICAL
BOOKS**

25

**per cent.
off published
prices**

**DAVID SPENCER
LIMITED**

**CLASSIFIED BUSINESS DIRECTORY
AND
INDEX TO ADVERTISEMENTS.**

ACCOUNTANTS.

Brooks, James	3
---------------------	---

ARCHITECTS.

Donellan, James J.	103
Jones, Claude P.	18

ASSIGNEES.

Over-land Financiers, Limited, The	20
------------------------------------------	----

AUTOMOBILES.

French, A. S. Automobile Co.	8
Walker, Archie	64
West End Garage Co.	70

BLACKSMITHING.

Munro, N. A.	88
Steel & Muir, 2410 Westminster Road, Phone L1226.	

BLUE PRINTING.

B. C. Drafting and Blue Printing Co.	84
-------------------------------------------	----

BOOTS AND SHOES.

Brummitt, W. B.	10
McAllister, John	30
Stark's West End Shoe Store	26

BOOT AND SHOE (REPAIRING).

Musgrave Shoe Repairing Factory	72
---------------------------------------	----

BRICK MANUFACTURERS.

Pacific Pressed Brick Co.	100
--------------------------------	-----

BROKERS (STOCK).

Kealy, A. E.	32
-------------------	----

BUILDERS.

Darion & Williams	58
-------------------------	----

BUILDERS' SUPPLIES.

Blackwell, E. G.	Front Cover
Shover, C. E. & Co.	84

BUSINESS SALESMEN.

Brooks, James	3
---------------------	---

BUTCHERS' SUPPLIES.

Vancouver Scale and Butcher Supply Co. ..	12
-------------------------------------------	----

BUTCHERS (WHOLESALE AND RETAIL).

Burns, P. & Co.	64
----------------------	----

CHIROPODISTS.

Jackson, Jno., 305 Loo Bldg.	
------------------------------	--

W. J. McLEAN ANGUS McLEAN R. E. CRANE

McLean Bros.

REAL ESTATE

Phone L5043.

606 Westminster Avenue.

VANCOUVER, B. C.

Phone 897.

Free Bus.

Steam Heated Throughout.

HOTEL BLACKBURN

A. E. BLACKBURN, Prop.

Rates per day—American plan \$1.50 to \$2.00;
European plan, rooms only, 75c upwards.

318 Westminster Avenue.

Vancouver, B. C.

J. B. TAYLOR, Prop.

Phone 4826.

Hamlet Cafe

FURNISHED ROOMS IN CONNECTION.
OPEN FROM 6 A. M. TO 8 P. M.
SHORT ORDERS AT ALL HOURS.

21 MEALS \$4.50.

REGULAR MEALS 25c.

152 Cordova St. W

VANCOUVER, B. C.

CIGARS AND TOBACCOS.

Alhambra Cigar Store	60
Simon, D., 122 Hastings Street E.	

CLOTHING.

Brummitt, V. B.	10
Hunter, D.	46

CONFECTIONERY

Empress Confectionery Co.	24
Purdy, R. C.	26

CONTRACTORS (BUILDING).

Hepburn, W., 405 Crown Building, Phone 2076.	
Over-land Financiers, Limited, The	20
Tinney, W.	74

CROCKERY MERCHANTS.

Brown, J. E.	24
-------------------	----

DANCING SCHOOLS.

O'Brien, Prof., O'Brien Hall, corner Hastings and Homer Streets, Phone 652.	
--------------------------------------------------------------------------------	--

DEPARTMENT STORES.

Spencer, David	4
----------------------	---

DRAFTING.

B. C. Drafting and Blue Printing Co.	84
-------------------------------------------	----

DRUGS.

Cedar Cottage Pharmacy	80
------------------------------	----

DYERS AND CLEANERS.

Bon Ton Dye Works, The	88
Clothes Reform, The	16
Columbia Dye Works, 533 Richards Street, Phone 4004.	
Stark's Renovatory	38

EMPLOYMENT BUREAUS.

Elite Employment Bureau, 313 Cambie Street, Phone 1823.	
Pacific Coast Employment Agency	78

ENGINEERS (CIVIL).

Stewart, Athol, 518 Hastings St. W., Room 2.	
----------------------------------------------	--

ENGINEERS (ELECTRICAL).

Faraday Electrical Co., The .. Inside Back Cover	
Hoffmeister, R.	80
Isdale, John S.	30
Tuohey & Turpin	28

ENGINEERS (MECHANICAL).

Tuohey & Turpin	28
-----------------------	----

ELECTRICAL SUPPLIES.

Campbell & Campbell, 816 Richards Street, Phone 1908.	
----------------------------------------------------------	--

Phone 1195

Residence Phone 2334.

Cable: "French," Vancouver, B. C.
A. B. C., 5th Edition.

A. S. French Automobile Co.

Sole Agent for B. C. for

2, 4, and 6 CYLINDER NAPIER CARS

From 10 to 90 h. p.

Full line of cars and accessories always in stock.

Write for 1910 Catalogue.

Office and Salesrooms:

Alexander Street

VANCOUVER, B. C.

Talk With

REITH

About

REAL ESTATE

**For Reith is the
man to talk to**

Phone 4636

253 Hastings Street E.

Midway Electical Co.	38
Price, Edward	92
Sharp & Co.	60
Sims & Cruickshank	36

EXPRESS AND DRAYAGE.

Electric Express Co.	44
---------------------------	----

FISH DEALERS.

Pacific Coast Fish Curing Co.	48
Vancouver Oyster & Fish Co.	102
Western Fish & Poultry Store, The	78

FLORISTS.

Brown Bro's. Co., Ltd.	74
Royal Nurseries & Floral Co., Ltd.	3

FUNERAL DIRECTORS.

Center & Hanna, Limited	102
Greene & Simpson	86
Harron Bros.	69

FURNITURE DEALERS.

Ballard, F. L., 1024 Westminster Avenue, Phone 2137.	
Huggett, Alf.	40

FURRIERS.

San Francisco Fur Co.	69
----------------------------	----

GAS APPLIANCES.

Burnside Gas Appliance Co., Ltd.	24
Vancouver Gas Co., Ltd.	82

GASOLINE ENGINES.

Le Page, A. W. Gasoline Engine & Supply Co.	50
-----------------------------------------------------	----

GENERAL MERCHANDISE.

Charlton, E. P. & Co.	104
----------------------------	-----

GROCCERS.

A. & C. Grocery, The	102
Atkins, J. H.	103
City Grocery	32
Clark, W., 328 Carrall Street, Phone 668.	
Filion, F.	38
Foran, J. S.	18
Ideal Grocery	90
Kosher Meat Market	50
McDowell, F. F.	86
Timmins & Mitchell	92

HAIR DRESSERS.

Elite Hair Store, corner Pender and Homer Streets, Phone 763.	
------------------------------------------------------------------	--

Fine Clothing



Stanfield's
Underwear

Penman's
Underwear

Barrington and
Stetson Hats

Slater's Shoes
Bell's Shoes

FOR LADIES AND MEN

Chippewa Cruisers
Shoes

TRUNKS and VALISES

W. B. BRUMMITT

18-20 Cordova St. W.

TERMINAL TEA ROOMS—PAGE 42.

Vancouver Street Directory.

11

HARDWARE.

Cunningham-Sanderson, Limited	70
Henry & Humphrey	72
Manitoba Hardware Co.	46
McBride & Co., corner Tenth and Westminster Avenues, Phone 2853.	
Ralph, Morris & Ella	98

HOTELS.

Atlantic Hotel	40
Hotel Blackburn	6
Hotel Iroquois	92
Hotel Manitoba	34
Hotel Rainier	96
Hotel Windsor	69

HOUSE FURNISHERS.

Metropolitan Furnishing Co.	66
----------------------------------	----

INSURANCE.

Hoseason & Claridge	Inside Front Cover
---------------------------	--------------------

INSURANCE (FIRE).

Bell-Irving, H. & Co.	58
Wilson, John W.	30

IRON WORKS.

Albion Iron Works	68
Mainland Iron Works	16
Ross & Howard Iron Works Co., Ltd.	2
Terminal City Iron Works	54
Vulcan Iron Works	80

JAPANESE GOODS.

Furuya, M. & Co.	48
-----------------------	----

JEWELLERS.

Birks, Henry & Sons	62
---------------------------	----

LOANS.

Pemberton & Son.	Inside Front Cover
--------------------------	--------------------

LUMBER MANUFACTURERS.

Anglo-American Lumber Co., Ltd., The	52
B. C. Mills Timber & Trading Co.	76
Canadian Cedar Lumber Co.	22
False Creek Lumber Co.	3
Heaps, E. H. & Co.	56
Pacific Coast Lumber Mills, Ltd., The	54

MACHINERY.

Blackwell, E. G.	Front Cover
Brown, A. G. & Co.	78
Letson & Burpee	28

MACHINISTS.

Chappell Bros.	66
---------------------	----

MAPS.

B. C. Drafting & Blue Printing Co.	84
-----------------------------------------	----

100 Hastings St.

Cor. Columbia Ave.

FONGOUN'S

Fine Tailoring

Cleaning, Repairing, Etc.
Only Fine Work Solicited

Fit Guaranteed.

Phone 2116.

Orders Filled From Vancouver.

Vancouver Scale and Butchers' Supply Co.

LIMITED

BUTCHERS' BLOCKS, HAND-MADE
Butchers' Knives and Tools,
Electric Coffee Mills, Meat Choppers
and Slicers, Cheese Cutters, Sausage,
Flour, Spices, Etc.

Western Agents: Stimpson Automatic Springless
Computing Scales.

515 Hamilton Street.

VANCOUVER, B. C.

MEAT MARKETS.

B. C. Market Co.	2
Brookes' Meat Market, 1974 Powell Street, Phone 5254.	
Kosher Meat Market	50

MEN'S FURNISHINGS.

Beach, M. A.	32
Bishop & Chambers	68
Brummitt, W. B.	10
Chapman, Edward	50
Hunter, D.	46
McAllister, John	30

MILLINERS.

Beresford, Madame J. W.	84
------------------------------	----

MOTOR BOATS.

Hoffar Motor Boat Co., The	36
----------------------------------	----

OPTICIANS.

Grimmett, G. W.	102
----------------------	-----

PATENT MEDICINES.

India Medicine Co., The	56
-------------------------------	----

PHOTOGRAPHERS.

Martel Studio	24
---------------------	----

PHOTO SUPPLIES.

Chandler Photo Supply Co.	30
--------------------------------	----

PICTURE FRAMING.

Wright, J.	16
-----------------	----

PIPE MANUFACTURERS.

Pacific Coast Pipe Co., Ltd.	58
-----------------------------------	----

PLUMBERS.

Fowler & Cook	88
Murray Bros.	48

PRINTERS.

Mail Publishing Co., The	76
Thomson Stationery Co., Ltd.	82
White & Bindon	86

REAL ESTATE.

Berry & Monroe	103
Brooks, James	3
Burley, W. H. & Co.	69
Barret, G. A. & Co.	Back Cover
Comeau & Warden	38
Cowan, D. R.	90
Cruise, A. W. & Co., 445 Homer Street, Phone 1562.	
Eardley, B. A. & Co.	90
Forrest, Dave	56
Grey, C.	50

M. Langtry

**Up-to-Date
MERCHANT**

TAILOR

**Largest Stock of
Imported Goods
in Vancouver**

**Suits Made to
Order \$20 Up**

**Satisfaction or
Money Refunded**

**Largest Tailor Store
in Canada**

322 HASTINGS ST., W.

Dominion Trust Building

VANCOUVER

REAL ESTATE (Continued).

Grey & McKeown, 317 Cambie Street, Phone 6130.	
Hoseason & Claridge	Inside Front Cover
Lefurgey & Co., Ltd.	48
Marriott & Fellows	4
McEwen & Co.	60
McLean Bros.	6
McLean & Oliphant	28
McNair, N.	42
Morden & Thornton, 446 Homer Street, Phone 815.	
Murray & Simpson	30
National Finance Co.	53
O'Donovan, F. T.	74
Osborne Bros.	Inside Back Cover
Pemberton & Son	Inside Front Cover
Railway Realty Co.	58
Reith, Wm. S.	8
Ross & McConaghy	28
Steele, Chas. Realty Co.	60
Thompson, S. A.	94
Victor Brokerage & Trust Co., The	103
Watkins, Manning & Thompson	68
Western Canada Trust Co., Ltd.	32
Yorston & Cochenour	100

REAL ESTATE (BROKERS).


Arthur, H.	84
Hori & Kojima, 251 Powell Street, Phone L3161.	
Ward, R. G.	46

RESTAURANTS.

Benge Cafe	66
Club Cafe	98
Cove Dining Room, 1927 Powell Street.	
Hamlet Cafe	6
Oregon Coffee House, The	72
Horse Shoe Coffee House	74
Princess Cafe	103
Saddle Rock Cafe, 245 Carrall St., Phone 5924	
Seymour Cafe	22
Wonder Coffee House, 224 Carrall St., Phone 2501.	

ROOMING HOUSES.

Avondale Rooms, 820 Pender Street.	
Benge Rooms	66

WE		IF
DO		YOU
NOT		DON'T
USE		FIND
GASOLINE		US PHONE 4689

THE CLOTHES REFORM

Steam and Dry Cleaning

253 Hastings St. E - VANCOUVER, B. C.

Mainland Iron Works

FOWLER BROS., Proprietors

ENGINEERS & MACHINISTS

Manufacturers of Marine, Sawmill & Mining Machinery

309 Alexander St., Cor. Gore Ave.

Phone 3738

VANCOUVER, B. C.

PHONE 4744

J. WRIGHT

Picture Framing, Stationery
Toys, Etc.

626 Westminster Ave.

VANCOUVER, B. C.

ROOMING HOUSES (Continued).

Kirk, Mrs.	88
Santa Rosa, The	24

SASH AND DOOR FACTORIES.

Fairview Manufacturing Co.	98
---------------------------------	----

STATIONERS.

Granville Stationery Co.	94
Honig's Stationery	50
Stuart, D. W.	74
Thomson Stationery Co., Ltd.	82
White & Bindon	86
Wright, J.	16

STENOGRAPHERS.

Typewriting Bureau, The	80
-------------------------------	----

SHEET METAL WORKS.

Douglas & Co.	84
--------------------	----

TAILORS.

Daoust, J. E.	60
Fongoun, L. & Co.	12
New York Tailoring Co.	18
Langtry, M.	14
Pantorium Tailors, 313 Cambie Street, Phone 1823.	
Stuart, A.	44
Wo Chang	88

TAILORS (LADIES')

Cooper, M. B.	102
Stuart, A.	44

TEA ROOMS.

Terminal Tea Rooms	42
Ye Mecca Tea Rooms	26

TOYS.

Wright, J.	16
-----------------	----

WALL PAPER AND PAINTS.

Cross & Heustis, 437 Homer Street, Phone 3981.	
------------------------------------------------	--

WINE AND SPIRIT MERCHANTS.

Urquhart, H. A.	92
----------------------	----

WOOD CARVERS.

Gibson, George S.	38
------------------------	----

Lowest Rates.

Satisfaction Guaranteed.

New York Tailoring

COMPANY

Ladies' and Gents' Suits made to order
Cleaning, Pressing and Repairing

Customers waited upon at their residence.

518 HOWE STREET, Corner of Pender Street.
VANCOUVER, B. C.

Claude P. Jones

A. R. A. I. C.

A preliminary design submitted
for any public or private building

429 Pender St. West

Phone 5024 and make appointment.

J. S. FORMAN

WHOLESALE AND RETAIL

GROCER

Phone 101

220 Granville Street

The following is a complete list of Fire Alarm Boxes at present installed throughout the city.

- 3—Beach Ave. and Granville St.
- 4—C. P. R. Shops, Drake St.
- 5—Drake and Granville Sts.
- 6—Smithe and Granville Sts.
- 7—Helmcken and Richards Sts.
- 8—North end of Cambie St. Bridge.
- 9—Cambie and Georgia Sts.
- 10—Homer and Robson Sts.
- 12—Dunsmuir and Granville Sts.
- 13—Dunsmuir and Homer Sts.
- 14—Seymour and Pender Sts.
- 15—Homer and Pender Sts.
- 16—Hastings and Granville Sts.
- 17—Hastings and Richards Sts.
- 18—Seymour and Cordova Sts.
- 19—C. P. R. Wharf.
- 20—Hudson's Bay Store, Georgia and Granville Sts.
- 21—Cordova and Water Sts.
- 22—W. H. Malkin's warehouse, Water St.
- 23—Water and Abbott Sts.
- 24—Hastings and Abbott Sts.
- 22—W. H. Malkin's warehouse, Water St.
- 26—Carrall and Water Sts.
- 27—Columbia Ave. and Cordova St.
- 28—Columbia Ave. and Pender St.
- 29—Pender and Beattie Sts.
- 30—Hamilton and Hastings Sts.
- 31—Hastings and Carrall Sts.
- 32—Royal City Mills, Carrall St.
- 33—Hudson's Bay Store, Water St.
- 34—City Hall, Westminster Ave.
- 35—Barnard St. and Westminster Ave.
- 36—Powell St. and Westminster Ave.
- 37—Hastings Saw Mill, Dunley Ave.
- 42—Carl Ave. and Cordova St.
- 43—Barnard St. and Jackson Ave.
- 46—Powell St. and Heatley Ave.
- 52—Keefer St. and Gore Ave.
- 53—Hastings and Jackson Ave.
- 54—Barnard St. and Hawkes Ave.
- 44—Brackman & Kerr, Wharf.
- 56—
- 61—Dufferin St. and Westminster Ave.
- 62—Sixth and Westminster Aves.
- 63—Keefer St. and Jackson Ave.
- 64—Seventh Ave. and Carolina St.
- 65—Tenth Ave. and George St.
- 67—Westminster Ave. and Park Lane.
- 68—Carl Ave. and Grove St.
- 71—Sugar Refinery, Powell St.
- 72—Campbell Ave. and Keefer St.
- 73—Heatley Ave. and Pender Stt.
- 119—C. P. R. Wharf, No. 1 Shed.
- 121—Heaps' Saw Mill, Powell St.
- 122—Hastings Shingle Mill, No. 2.
- 123—Hastings Shingle Mill, No. 1.
- 124—P. Burns' Abattoir, Woodland Drive.
- 125—Powell St. and Woodland Drive.
- 126—Keefer St. and Victoria Drive.
- 127—Hastings St. and Salisbury Drive.
- 128—Templeton Drive and Oxford St.
- 131—Venables St. and Clark Drive.
- 132—Venables St. and Park Drive.

THE
Over-land Financiers
Limited

Elmer R. Sly, President

Loans,
Fire Insurance
Financial Brokers
Builders of Houses
On Monthly Payment Basis
Executors
Administrators
Assignees
Real Estate
Etc.

Phone 6318

336 Hastings Street West

VANCOUVER, B. C.

- 134—First Ave. and Park Drive.
135—William St. and Victoria Drive.
141—Charles St. and Park Drive.
142—William St. and Cotton Drive.
143—Park Drive and Napier St.
151—Third Ave and Victoria Drive.
212—Thirteenth Ave. and Bridge St.
213—Eleventh Ave. and Manitoba St.
214—Lansdowne and Manitoba Sts.
215—Thirteenth and Westminster Aves.
216—Sixth Ave. and Birch St.
221—Broadway and Spruce St.
222—Sixth Ave. and Oak St.
224—Vancouver General Hospital, Heather St.
225—Vancouver Lumber Company, Bridge St.
226—Vancouver Engineering Works.
227—Dufferin and Columbia Sts.
228—Sixth Ave. and Columbia St.
229—
231—Fifth Ave. and Yukon St.
232—Eighth Ave. and Manitoba St.
233—Broadway and Ash St.
241—Seventh Ave. and Granville St.
242—Broadway and Laurel St.
243—Second Ave. and Granville St.
251—Fourteenth Ave. and Manitoba St.
253—Tenth Ave. and Westminster Road.
261—Prince Edward and Dufferin Sts.
262—Prince Edward St. and Eighth Ave.
263—Prince Edward St. and Thirteenth Ave.
264—Twelfth Ave. and Carolina St.
312—Haro and Denman Sts.
313—Pacific Coast Mills, Georgia St.
314—Pender and Georgia Sts.
315—Beach Ave. and Denman St.
316—Burnaby and Nicola Sts.
317—Chilco and Barclay St.
318—Gilford and Georgia Sts.
319—Bidwell and Comox Sts.
321—Bute and Burnaby Sts.
322—Bute and Barclay Sts.
323—Nelson and Thurlow Sts.
324—Nelson and Hornby Sts.
325—Burrard and Georgia Sts.
326—Bute and Georgia Sts.
327—Jervis and Robson Sts.
328—Haro and Broughton Sts.
329—Jervis and Comox Sts.
331—Pacific and Burrard Sts.
332—Howe and Georgia Sts.
335—Howe and Davie Sts.
336—Burrard and Pendrill Sts.
341—Pender and Thurlow Sts.
342—Howe and Pender Sts.
343—Hornby and Hastings Sts.
345—Robson and Thurlow Sts.
412—Third Ave. and Cedar Sts.
413—Third Ave. and Arbutus St.
414—York and Yew Sts.
415—Sixth Ave. and Pine St.
421—Second Ave. and Balsam St.
425—Cornwall and Balsam Sts.
431—Seventh Ave. and Maple St.
512—Park Drive and Eleventh Ave.
541—Clark Drive and Twelfth Ave.



SEYMOUR CAFE

THE BEST

25 Cent

MEAL IN THE CITY

SPECIAL ORDERS

PREPARED BY

THE BEST CHEF IN THE WEST

QUICK SERVICE
PRICES REASONABLE

Every Courtesy Shown Customers

551 Seymour St.

Centre of Business Vancouver

Phone B-334

Canadian Cedar
Lumber Co.

Cor. Salisbury and Stewart St.

VANCOUVER, B. C.

KEY TO STREET CAR LINES.

- (G) Green Lights and Signs. ✓
- (G&W) Green and White Lights and Signs.
- (R) Red Lights and Signs.
- (RB) Red Ball Lights and Signs.
- (R&W) Red and White Lights and Signs.
- (W) White Lights and Signs.
- (Y) Yellow Lights and Signs.

In all instances the letter or letters in parenthesis, as (G&W), following the street number desired, indicate the car or cars running the nearest to that number. Following the description of the street they indicate the cars crossing that street, if any, and on which street they cross, or the cars that parallel the street, if any, and how many blocks away and in what direction. Where ditto marks appear in parenthesis, as ("), following the number desired, take the same car as that specified for the last previous number.

TO LOCATE ANY STREET IN THE ABSENCE OF STREET SIGNS

First determine whether the street extends east and west, or north and south. Then ascertain the number on the nearest house, also of the nearest house on the first cross street. Suppose, in the first instance, the street extends east and west, and the number is 1718, and the cross street north and south and the number is 524. Refer to any street in the directory extending east and west, and if you are on the east side of the city you will find that Park Drive starts the 1700 block, and for the streets extending north and south Pender Street East starts the 500 block. Consequently you are on the corner of Park Drive and Pender Street East.

The Burnside Gas Appliance Co.

Gas Ranges Gas Appliances

Phone 3704.

1037 Granville Street.

VANCOUVER, B. C.

Nowadays
It's**BROWN'S**

For Kitchen Hardware, China, Crockery,
Glassware, School Supplies,
Souvenirs, Novelties.

J. E. BROWN

1210 Granville Street.

Opposite Lester Hall.

Artistic Photographers

Macfadyen Studio

544 Granville St.

Phone 902.

Martel Studio

122 Hastings St. W

Phone 3228.

"Santa Rosa"

FURNISHED ROOMS

Under Careful Management.

CENTRAL, CLEAN, COSY.

: : Terms Moderate. : :

Phone 2012. A. D. THOMSON, Prop.

108 HASTINGS ST. W.

The Empress Confectionery

Fresh Home Made Candies of All Kinds. Dairy
Cream Chocolates and Cream Caramels,
etc., a specialty.

Pure Ice Cream

Tea Room

974 Granville Street.

VANCOUVER, B. C.

STREET AND STREET CAR DIRECTORY

Abbott St. — Extends from C. P. R. Tracks south to Pender St. W. 7th east of Granville. (G-Y) cross on Cordova. (G.&W-R-R &W-W) cross on Hastings W.
 100 C.P.R. Tracks (G-G &W-R-R&W-W-Y)
 200 Water (")
 300 Cordova W. (")
 400 Hastings W. (")
 — Pender W. (")

Alberni St. — Extends from Burrard St. northwest to city Boundary. 1st north of Robson. (R-Y) parallel 1 block south, from 1000 to 1800.

1000 Burrard (R-Y)
 1100 Thurlow (")
 1200 Bute (")
 1300 Jervis (")
 1400 Broughton (")
 1500 Nicola (")
 1600 Cardero (")
 1700 Bidwell (")
 1800 Denman (")
 1900 Gilford (")
 — Chilco (")

Albert St. — Extends from Boundary Av. east to City Boundary. 1st north of Hastings E. (G) parallels 1 block north from 1100 to 1600. (RB) parallels 1 block south.

1100 Boundary (G-RB)
 1200 Vernon (")
 1300 Clark (")
 1500 McLean (")
 1600 Woodland (")
 1700 Park (RB)
 1800 Salisbury (")
 1900 Victoria (")
 2000 Semlin (")
 2100 Lakewood (")
 2200 Templeton (")
 2300 Garden (")

Alberta St. — Extends from Front St. south to City Boundary 5th west of Westminster S. (R-W) parallels 5 blocks east from 1700 to 2500 (Y) parallels 5 blocks east from 1700 to 3100 (W) crosses on

Broadway W.
 1800 Front (R-W-Y)
 1900 Lorne (")
 2000 Lansdowne (")
 2100 5th Av. W. (")
 2200 6th Av. W. (")
 2300 7th Av. W. (")
 2400 8th Av. W. (")
 2500 Broadway W. (")
 2600 10th Av. W. (")
 2700 11th Av. W. (")
 2800 12th Av. W. (")
 2900 13th Av. W. (")
 3000 14th Av. W. (")
 3100 15th Av. W. (")

Alder St.—Extends from False Creek south to 15th Av. W. 3rd east of Granville S. (W) crosses on Broadway W.

2200 6th Av. W. (W)
 2300 7th Av. W. (")
 2400 8th Av. W. (")
 2500 Broadway W. (")
 2600 10th Av. W. (")
 2700 11th Av. W. (")
 2800 12th Av. W. (")
 2900 13th Av. W. (")
 3000 14th Av. W. (")
 — 15th Av. W. (")

Alexander St.—Extends from Carrall St. easterly to Hawks Av. 3rd north of Hastings E. (G) parallels 1 block south.

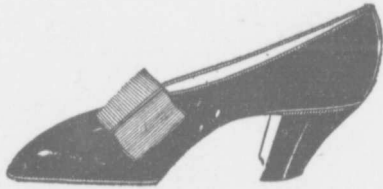
1 Carrall (G)
 100 Columbia (")
 200 Westminster (")
 300 Gore (")
 400 Dunlevy (")
 500 Jackson (")
 600 Carl (")
 700 Heatley (")
 — Hawks (")

Alma Road — Extends from English Bay, south to 16th Av. W. 23rd west of Granville S. (R&W) crosses on 4th Av. W.

1600 Victoria (")
 1700 1st Av. W. (")
 1800 2nd Av. W. (")
 1900 3rd Av. W. (")
 2000 4th Av. W. (")
 2100 5th Av. W. (")
 2200 6th Av. W. (")
 2300 7th Av. W. (")
 2400 8th Av. W. (")

Largest and Finest Assortment of Footwear in
Canada at

Stark's West End Shoe Store
51 and 623 Hastings Street West.



Sole Agent for Nettleton, Slater and Gold Brand
for Men. Edwin C. Burt, Sorosis and Stark's
Special for Ladies, also the finest assortment of
Children's Footwear to be found.

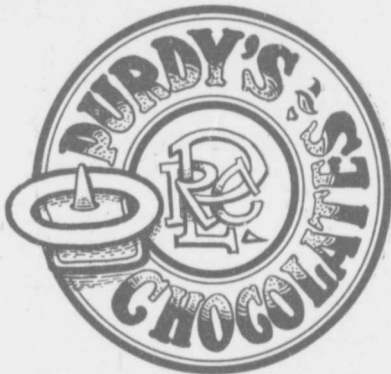
EDWARD STARK

Largest Retailers of Shoes in Canada.

HOME-MADE CANDIES

I
C
E

C
R
E
A
M



S
O
F
T

D
R
I
N
K
S

R. C. PURDY

438 Granville St.

704 Robson St.

- 2500 Broadway W. (")
- 2600 10th Av. W. (")
- 2700 11th Av. W. (")
- 2800 12th Av. W. (")
- 2900 13th Av. W. (")
- 3000 14th Av. W. (")
- 3100 15th Av. W. (")
- 3200 16th Av. W. (")

Arbutus St.—Extends from McNicholl Av. south to 16th Av. W. 6th west of Granville S. (G&W) crosses between Creelman & Cornwall Sts. (R&W) crosses on 4th Av. W.

- 1100 McNicholl (G&W)
- 1200 Whyte (")
- 1300 Creelman (")
- 1500 Cornwall (")
- 1600 York (")
- 1700 1st Av. W. (R&W)
- 1800 2nd Av. W. (")
- 1900 3rd Av. W. (")
- 2000 4th Av. W. (")
- 2100 5th Av. W. (")
- 2200 6th Av. W. (")
- 2300 7th Av. W. (")
- 2400 8th Av. W. (")
- 2500 Broadway W. (")
- 2600 10th Av. W. (")
- 2700 11th Av. W. (")
- 2800 12th Av. W. (")
- 2900 13th Av. W. (")
- 3000 14th Av. W. (")
- 3100 15th Av. W. (")
- 16th Av. W. (")

Ash St.—Extends from 6th Av. W. south to 16th Av. W. 8th west of Westminster S. (W) crosses on Broadway W.

- 2200 6th Av. W. (W)
- 2300 7th Av. W. (")
- 2400 8th Av. W. (")
- 2500 Broadway W. (")
- 2600 10th Av. W. (")
- 2700 11th Av. W. (")
- 2800 12th Av. W. (")
- 2900 13th Av. W. (")
- 14th Av. W. (")
- 3100 15th Av. W. (")
- 16th Av. W. (")

Balaclava Road—Extends from English Bay south to 16th Av. W. 17th west of Granville S. (R&W) crosses on 4th Av. W.

- 1700 1st Av. W. (R&W)
- 1800 2nd Av. W. (")
- 1900 3rd Av. W. (")
- 2000 4th Av. W. (")
- 2100 5th Av. W. (")

- 2200 6th Av. W. (")
- 2300 7th Av. W. (")
- 2400 8th Av. W. (")
- 2500 Broadway W. (")
- 2600 10th Av. W. (")
- 2700 11th Av. W. (")
- 2800 12th Av. W. (")
- 2900 13th Av. W. (")
- 3000 14th Av. W. (")
- 3100 15th Av. W. (")
- 3200 16th Av. W. (")

Balsom St.—Extends from Pt. Grey Road south to 10th Av. W. 9th west of Granville S. (G&W) crosses on Victoria. (R&W) crosses on 4th Av. W.

- 1400 Pt. Gray (G&W)
- 1500 Cornwall (")
- 1600 York (")
- 1700 1st Av. W. (R&W)
- 1800 2nd Av. W. (")
- 1900 3rd Av. W. (")
- 2000 4th Av. W. (")
- 2100 5th Av. W. (")
- 2200 6th Av. W. (")
- 2300 7th Av. W. (")
- 2400 8th Av. W. (")
- 2500 Broadway W. (")
- 10th Av. W. (")

Barclay St.—Extends from Burradd St. northwest to City Boundary. 2nd south of Robson. (R-Y) parallel 2 blocks north, from 700 to 1800 & crosses on Denman.

- 1000 Burrard (R-Y)
- 1100 Thurlow (")
- 1200 Bute (")
- 1300 Jervis (")
- 1400 Broughton (")
- 1500 Nicola (")
- 1600 Cardero (")
- 1700 Bidwell (")
- 1800 Denman (")
- 1900 Gifford (")

(G & W-R & W-R-W) cross on Granville. (R-Y) parallel from 700 to 1800.

- 700 Granville (G&W-R&W-R-W)
- 800 Howe (")
- 900 Hornby (")
- 1000 Burrard (")
- 1100 Thurlow (R-Y)
- 1200 Bute (")
- 1300 Jervis (")
- 1400 Broughton (")
- 1500 Nicola (")
- 1600 Cardero (")
- 1700 Bidwell (")

Tuohey & Turpin

WE DO

ALL KINDS OF MACHINE WORK

Automobile and Launch work a Specialty. Give us a trial on your next machine or electrical job. Piston rings, valves, etc. on short notice.

Storage Batteries Recharged, Repaired and Repasted.

Complete Electric Light Plants Installed.

Foot of Bidwell and Georgia Sts. Phone 5144

Ross & McConaghy

REAL ESTATE, LOANS AND INSURANCE

RENTS COLLECTED.

Phone
5294.

618 Robson Street,
VANCOUVER, B. C.

Letson & Burpee, Ltd.

Manufacturers of

GASOLINE ENGINES, CANNING AND
SHINGLE MILL MACHINERY,
FOUNDERS, MACHINISTS, PATTERN
MAKERS AND BLACKSMITHS.

Phone 491

142-198 Alexander Street

D. J. McLEAN.

W. J. OLIPHANT.

McLEAN & OLIPHANT

Real Estate and Farm Lands

Phone
3470.

500 Pender Street,
VANCOUVER, B. C.

1800 Denman (")
1900 Gilford (")
2000 Chilco (")
— Park Road (")

Beatty St.—Extends from Pender St. W. south-west to False Creek. 6th east of Granville. (G-G&W-R-R&W-W-Y) cross Cambie on Hastings W. 1 block west & 1 north.

500 Pender W. (G-G&W-R-R&W-W-Y)
600 Dunsmuir (")
700 Georgia (")
800 Robson (")
— Smithe (")

Bidwell St.—Extends from Burrard Inlet south-west to English Bay. 10th west of Granville. (G) crosses on Georgia. (R-Y) cross on Robson & Davie.

700 Burrard Inlet (G)
— Alberni (R-Y)
800 Robson (")
— Haro (")
900 Lane (")
— Barclay (")
1000 Nelson (")
— Comox (")
1100 Lane (")
— Pendrell (")
1200 Davie (")
— Burnaby (")
— Harwood (")
1300 Lane (")
— Beach (")

Birch St.—Extends from False Creek south to 15th Av. W. 2nd east

2000 Chilco (")
— Park Road (")
200 Powell (G)
300 Cordova E. (G-RB)
400 Hastings E. (RB-R&W)
500 Pender E. (")
600 Keefer (G&W)
700 Harris (")
800 Barnard (")
900 Venables (R&W)
1000 Parker (")
1100 Napier (")
1200 William (")
1300 Crab Tree Lane (")

Boundary St.—South side. Name changed to Trafalgar Road, which see.

Bridge St.—Extends from False Creek south to City Boundary. 7th west of Westminster S. (W) crosses on Broadway W.

2000 Front (W)
2100 5th Av. W. (")
2200 6th Av. W. (")
2300 7th Av. W. (")
2400 8th Av. W. (")
2500 Broadway W. (")
2600 10th Av. W. (")
2700 11th Av. W. (")
2800 12th Av. W. (")
2900 13th Av. W. (")
3000 14th Av. W. (")
3100 15th Av. W. (")

Broadway East—Extends from Ontario St. east to City Boundary. (R-W-Y) cross on Westminster & (R) on Broadway E. 200 to 700. (G&W) cross on Park.

1 Ontario (R-W-Y)
100 Quebec (")
200 Westminster (")
— Westminster Rd. (")
300 Scotia (")
— Sophia (")
— Brunswick (")
400 Prince Edward (")
— Victoria St. (R)
500 St. George (")
600 Carolina (")
700 Scott (")
800 Burns (")
900 St. Catherines (")
1000 Dock (")
1100 Glen (R&W)
1200 Keith (")
1300 Clark (")
1400 McLean (")
1500 Woodland (")
1700 Park (")
1900 Victoria (")
2000 Semlin (")
2100 Lakewood (")
2200 Templeton (")
2300 Garden (")

Broadway West—Extends from Ontario St. west to City Boundary. (W) on Broadway W. from 1 to 1500. (R&W) parallels 5 blocks north from 1500 to 3700.

1 Ontario (W)
100 Manitoba (")
200 Columbia S. (")
300 Alberta (")

JOHN W. WILSON

Fire Insurance

☛ Losses settled with the utmost Promptness and Liberality.

Phone 5626.

Room 4, Winch Building.

THOS. H. SIMPSON.

DONALD MURRAY,
Notary Public.

Murray & Simpson

Real Estate

516 Richards Street.

Phone 4584.

JOHN S. ISDALE

Electrical Engineer and Instrument Maker

☛ Electric Light and Power Plant. Scientific Instruments for Engineering and Electrical Purposes. Surveying Instruments made, bought and carried in stock. All work guaranteed.

Phone 5256.

436 Richards St., City.

John McAllister

BOOTS, SHOES and Gents' Furnishings

See my lines first, get my prices; then you'll buy from me.

2415 Westminster Ave, Mount Pleasant.

CHANDLER PHOTO SUPPLY CO

Wellington Plates, Films, Bromide and S. C. P. Papers. Lumiere Plates and Films. Photo Mounts and Supplies.

Phone 979.

565 Hamilton Street.

400 Yukon (")
 500 Bridge (")
 600 Ash (")
 700 Heather (")
 800 Willow (")
 900 Laural (")
 1000 Oak (")
 1100 Spruce (")
 1200 Alder (")
 1300 Birch (")
 1400 Hemlock (")
 1500 Granville (")
 1600 Fir (")
 1700 Pine (")
 1800 Cedar (")
 1900 Cypress (R&W)
 2000 Maple (")
 2100 Arbutus (")
 2200 Yew (")
 2300 Vine (")
 2400 Balsam (")
 2500 Larch (")
 2600 Trafalgar (")
 2700 Stephens (")
 2800 McDonald (")
 2900 Mackenzie (")
 3000 Bayswater (")
 3100 Balaclava (")
 3200 Trutch (")
 3300 Blenheim (")
 3400 Waterloo (")
 3500 Collingwood (")
 3600 Dunbar (")
 3700 Alma (")

Barnard St. — Extends from False Creek east to City Boundary. 4th south of Hastings E. (R-W-Y) cross on Westminster. (R&W) cross on Campbell & parallels 1 block south from 900 to 1700. (G&W) parallels 1 block north from 200 to 1200, thence 3 blocks north to 1900.

100 False Creek (G&W-R-W-Y)
 200 Westminster (")
 300 Gore (")
 400 Dunlevy (G&W)
 500 Jackson (")
 600 Carl (")
 700 Heatley (")
 800 Hawks (")
 900 Campbell (G&W-R&W)
 1000 Raymur (")
 1100 Boundary (")
 1200 Vernon (")
 1300 Clark (")
 1500 McLean (")
 1600 Woodland (")
 1700 Park (")

1800 Salsbury (")
 1900 Victoria (")
 2000 Semlin (")
 2100 Lakewood (")
 2200 Templeton (")
 2300 Garden (")

Bay View St.—Extends from Hawks Av. east to False Creek. 6th south of Hastings E. (R&W) 1 block north. 800 Hawks (R&W)
 900 Campbell (")

Dayswater St.—Extends from Pt. Gray Road south to Broadway W. 15th west of Granville S. (R&W) crosses on 4th Av. W.

1700 Pt. Gray (R&W)
 1900 3rd Av. W. (")
 2000 4th Av. W. (")
 2100 5th Av. W. (")
 2200 6th Av. W. (")
 2300 7th Av. W. (")
 2400 8th Av. W. (")

— Broadway W. (")

Beach Av.—Extends from Granville St. north-westerly along the shore of English Bay to City Boundary of Granville S. (W) crosses on Broadway W.

2200 6th Av. W. (W)
 2300 7th Av. W. (")
 2400 8th Av. W. (")
 2500 Broadway W. (")
 2600 10th Av. W. (")
 2700 11th Av. W. (")
 2800 12th Av. W. (")
 2900 13th Av. W. (")
 3000 14th Av. W. (")
 — 15th Av. W. (")

Bismarck St.—Extends from Odlum St. east to City Boundary. 10th south of Hastings E. (R&W) crosses on Park.

1400 Odlum (R&W)
 — McLean (")
 1500 Woodland (")
 1600 Cotton (")
 1700 Park (")
 1800 Salsbury (")
 1900 Victoria (")
 2000 Semlin (")
 2100 Lakewood (")
 2200 Templeton (")
 2300 Garden (")

Blenheim Road—Extends from Pt. Gray Road south to 16th Av. W.

M. A. BEACH

Dealer in

**MEN'S FURNISHINGS
BOOTS AND SHOES**

The Best Goods at Lowest Prices.

536-538 Westminster Ave. VANCOUVER, B. C.

Phone 5090.

Room 7, 319 Pender Street.

**Western Canada Trust Co.
Limited**EXECUTORS, TRUSTEES, RECEIVERS
LIQUIDATORS, REAL ESTATE
BROKERS, ETC.

VANCOUVER, B. C.

Phone 286.

A. R. GRIFFIN, Prop.

CITY GROCERY

Dealers in

FANCY GROCERIES, FRUITS AND
VEGETABLES.

712 Davie Street,

VANCOUVER, B. C.

A. E. KEALY

STOCK

OIL AND PHOSPHATE LANDS IN WYOMING.

BROKER

:216 Crown Building.

PENDER STREET.

19th west of Granville S. (R&W) crosses on 4th Av. W.

1600 Pt. Gray (R&W)

1700 1st Av. W. (")

1800 2nd Av. W. (")

1900 3rd Av. W. (")

2000 4th Av. W. (")

2100 5th Av. W. (")

2200 6th Av. W. (")

2300 7th Av. W. (")

2400 8th Av. W. (")

2500 Broadway W. (")

2600 10th Av. W. (")

2700 11th Av. W. (")

2800 12th Av. W. (")

2900 13th Av. W. (")

3000 14th Av. W. (")

3100 15th Av. W. (")

3200 16th Av. W. (")

Boundary Av.—Extends from Powell St. south to False Creek. 9th east of Westminster. (G) crosses on Powell. (RB) crosses on Hastings E. (G&W) cross on Harris (R&W) cross on Venables.

Broughton St.—Extends from Burrard Inlet south-west to English Bay. 7th west of Granville. (G) crosses on Pender W. (R-Y) cross on Robson & Davie.

600 Pender W. (G)

700 Georgia (")

— Alberni (R-Y)

800 Robson (")

— Haro (")

900 Lane (")

— Barclay (")

1000 Nelson (")

— Comax (")

1100 Lane (")

— Pendrell (")

1200 Davie (")

— Burnaby (")

1300 Lane (")

— Harwood (")

1400 Beach (")

Brunswick St.—Extends from 5th Av. E. south to Broadway E. 3rd east of Westminster S. (R) crosses on Broadway E. (W) on Broadway E. to 3 blocks west. (Y) parallels 3 blocks west.

2100 5th Av. E. (R-Y)

2200 6th Av. E. (")

2300 7th Av. E. (R-W-Y)

2400 8th Av. E. (")

— Broadway E. (")

Burnaby St.—Extends from Burrard St. north-west to English Bay. 1st south of Davie. (R-Y) parallel 1 block north.

1000 Burrard (R-Y)

1100 Thurlow (")

1200 Bute (")

1300 Jervis (")

1400 Broughton (")

1500 Nicola (")

1600 Cardero (")

1700 Bidwell (")

— Beach (")

Burns St.—Extends from False Creek south to City Boundary. 9th east of Westminster S. (R) on Broadway E. to 1 block west.

2200 6th Av. E. (R)

2300 7th Av. E. (")

2400 8th Av. E. (")

2500 Broadway E. (")

2600 10th Av. E. (")

2700 11th Av. E. (")

2800 12th Av. E. (")

2900 13th Av. E. (")

3000 14th Av. E. (")

Burrard St.—Extends from C. P. R. Tracks south to False Creek. 3rd west of Granville. (G) crosses on Pender W. (R-Y) cross on Robson & Davie. (R&W-W) parallel 3 blocks east.

300 C. P. R. Tracks (G)

400 Hastings W. (")

— Seaton (")

500 Pender W. (")

— Eveleigh (")

600 Dunsmuir (")

— Melville (")

700 Georgia (R-Y)

— Alberni (")

800 Robson (")

— Haro (")

900 Smithe (")

— Barclay (")

1000 Nelson (G&W-R-R &W-W)

— Comox (")

1100 Helmcken (R-Y)

— Pendrell (")

1200 Davie (")

— Burnaby (")

1300 Drake (")

**Hot and Cold Water in Every Room
50 Rooms with Bath**



**New Hotel, Opened October, 1909
STRICTLY FIRST-CLASS**

HOTEL MANITOBA



**European Plan 75c Per Day and Up
American Plan \$2.00 Per Day and Up**

Centrally Located

50 Cordova Street

Vancouver, B.C.

— Harwood ("")
1400 Pacific (G&W-R-R
&W-W)

1500 Beach ("")
Bute St.—Extends from
Burrard Inlet south-
west to English Bay.
5th west of Granville.
(G) crosses on Pender
W. (R-Y) cross on
Robson & Davie.

300 Burrard Inlet (G)

— Seaton ("")
600 Pender W. ("")

— Melville ("")
700 Georgia (R-Y)

— Alberni ("")
800 Robson ("")

— Haro ("")
900 Lane ("")

— Barclay ("")
1000 Nelson ("")

— Comox ("")
1100 Lane ("")

— Pendrell ("")
1200 Davie ("")

— Burnaby ("")
1300 Lane ("")

— Harwood ("")
1400 Pacific ("")

— Beach ("")

Cambie St. — Extends
from C. P. R. Tracks
south-west to Smithe
St. 5th east of Gran-
ville. (G-G&W-R-R&W-
W-Y) cross on Hast-
ings W.

100 C. P. R. Tracks (G-
G&W-R-R&W-W-
Y)

200 Water ("")

300 Cordova ("")

400 Hastings W. ("")

500 Pender W. ("")

600 Dunsmuir ("")

700 Georgia ("")

800 Robson ("")

— Smithe ("")

Cambridge St.—Extends
from Powell St. east
to City Boundary. 6th
north of Hastings E.
(G) crosses on Powell.

2100 Powell (G)

2200 Templeton ("")

2300 Garden ("")

Campbell Av.—Extends
from Powell St. south
to Bay View St. 7th
east of Westminster.
(G) crosses on Powell.
(RB) cross on Hast-
ings E. (R&W) on
Campbell from 400 to

900. (G&W) cross on
Harris.

200 Powell (G)

300 Cordova (G-RB-R&
W)

400 Hastings E. (RB-
R&W)

500 Pender E. ("")

600 Keefer (G&W)

700 Harris ("")

800 Barnard ("")

900 Prior ("")

— Bay View ("")

Campbell St.—South side.
Name changed to Al-
ma Road, which see.

Cardero St. — Extends
from Burrard Inlet
south-west to English
Bay. 9th west of Gran-
ville. (G) crosses on
Georgia. (R-Y) cross
on Robson & Davie.

700 Burrard Inlet (G)

— Alberni (R-Y)

800 Robson ("")

— Haro ("")

900 Lane ("")

— Barclay ("")

1000 Nelson ("")

— Comox ("")

1100 Lane ("")

— Pendrell ("")

1200 Davie ("")

— Burnaby ("")

1300 Lane ("")

— Harwood ("")

1400 Beach ("")

Carl Av.—Extends from
Railway St. south to
Grove St. 4th east of
Westminster (W)
crosses on Powell. (R
B-R&W) cross on Hast-
ings E. (G&W) cross
on Harris.

1 Railway (G)

100 Alexander ("")

200 Powell ("")

300 Cordova (G-RB-R&
W)

400 Hastings E. (RB-R
&W)

500 Pender E. ("")

600 Keefer (G&W)

700 Harris ("")

800 Barnard ("")

900 Prior ("")

— Grove ("")

Carnarvon St.—Extends
from 10th Av. W.
south to 16th Av. W.
16th west of Granville
S. (R&W) crosses on
4th Av. W. 6 blocks

Have Afternoon Tea at

LIGHT
LUNCHES



SMOKING
ROOM

709 DUNSMUIR STREET.
First Floor Northwest corner of Granville Street.

The Hoffar Motor Boat Co.

DESIGNERS. BUILDERS

High Grade Motor Boats

YACHT AND MOTOR BOAT BROKERS.

Agents: ROBERTS MOTORS.

Phone 2717.

Factory and Marine Ways—1933 GEORGIA ST.

WIRING CHANDELIERS FITTINGS

Sims & Cruickshank



ELECTRICIANS

**Estimates Given on all
kinds of Electrical Work**

269 Hastings Street East.
Opp. Empress Theater..

Phone 5348
VANCOUVER, B. C.

north.

2600 10th Av. W. (R&W)
 2700 11th Av. W. (")
 2800 12th Av. W. (")
 2900 13th Av. W. (")
 3000 14th Av. W. (")
 3100 15th Av. W. (")
 3200 16th Av. W. (")

Carolina St. — Extends from False Creek south to 14th Av. E. 7th east of Westminster S. (R) crosses on Broadway E.

2100 5th Av. E. (R)

2200 6th Av. E. (")

2300 7th Av. E. (")

2400 8th Av. E. (")

2500 Broadway E. (")

2600 10th Av. E. (")

2700 11th Av. E. (")

2800 12th Av. E. (")

2900 13th Av. E. (")

— 14th Av. E. (")

Carrall St. — Extends from C. P. R. Tracks south to False Creek. 8th east of Granville. (G-Y) cross on Cordova. (G&W-R-R&W-W) cross on Hastings.

100 C. P. R. Tracks (G-G&W-R-RB-R&W-W-Y)

— Water (")

200 Powell (")

300 Cordova (")

400 Hastings (")

500 Pender (")

Cedar St. — Extends from 1st Av. W. south to 13th Av. W. 3rd west of Granville S. (R&W) crosses on 4th Av. W. (W) parallels 3 blocks east from 1800 to 250).

1700 1st Av. W. (R&W-W)

1800 2nd Av. W. (")

1900 3rd Av. W. (")

2000 4th Av. W. (")

2100 5th Av. W. (")

2200 6th Av. W. (")

2300 7th Av. W. (")

2400 8th Av. W. (W)

2500 Broadway W. (")

2600 10th Av. W. (")

2700 11th Av. W. (")

2800 12th Av. W. (")

— 13th Av. W. (")

Charles St. — Extends from False Creek east to Garden Drive. 9th

south of Hastings E. (R&W) crosses on Park.

1100 False Creek (R&W)

1200 Vernon (")

1300 Clark (")

1400 Odium (")

— McLean (")

1500 Woodland (")

1600 Cotton (")

1700 Park (")

1800 Salsbury (")

1900 Victoria (")

2100 Lakewood (")

2200 Templeton (")

— Gardan (")

Chestnut St. — Extends from English Bay south to 1st Av. W. between Cedar & Cypress. (G&W) crosses on Short.

900 English Bay (G&W)

1000 Ogden (")

1100 McNicoll (")

1200 Whyte (")

1300 Creelman (")

1400 Short (")

1500 Cornwall (")

1600 York (")

— 1st Av. W. (")

Chilco St. — Extends from Georgia St. south-west to English Bay. 13th west of Granville. (G) crosses on Georgia. (R-Y) parallel 2 blocks east.

700 Georgia (G)

— Alberni (")

800 Robson (")

— Haro (R-Y)

900 Lane (")

— Barclay (")

1000 Nelson (")

— Comox (")

1100 Lane (")

— Pendrell (")

— Beach (")

Clark Drive — Extends from C. P. R. Tracks south to City Boundary. 11th east of Westminster. (G) crosses on Powell. (RB) crosses on Hastings E. (G & W) crosses on Harris. (R & W) crosses on Harris. (R&W) parallels 5 blocks east from 900 to 1500. 4 blocks east from 1600 to 3000.

P. O. Box 222.

Phone 122.

F. FILION

Importer and Dealer in Wholesale and Retail

Groceries and ProvisionsFamilies waited upon for orders. Goods delivered in any
Part of the City. Fine Teas a Specialty.

204 CARRALL ST.

VANCOUVER, B. C.

Phone 4899

Altering a Specialty

Stark's Renovatory

EXPERT TAILORS AND CLEANERS

821 Davie St.

Vancouver, B. C.

COMEAU & WARDEN

REAL ESTATE BROKERS

Phone 4592.

571 Hamilton Street.

VANCOUVER, B. C.

George S. GibsonARCHITECTURAL WOOD CARVER,
DESIGNER AND MODELLER, ETC.

RESIDENCE PHONE L4549.

556 Seymour St. Vancouver

W. R. WEBB.

Phone 3839

S. W. SMITH.

MIDWAY ELECTRIC CO.Electric Chandeliers, Bells, Fittings,
etc. Motors Installed and Repaired.
House Wiring a Specialty.

808 WEST BROADWAY,

VANCOUVER, B. C.

100 C. P. R. Tracks (G)
 200 Powell (")
 300 Albert (G-RB)
 400 Hastings E. (RB)
 500 Pender (")
 600 Keefer (G&W)
 700 Harris (")
 800 Barnard (R&W-G&W)
 900 Venables (R&W)
 1000 Parker (")
 1100 Napier (")
 1200 William (")
 1300 Charles (")
 1500 Grant (")
 1600 Graveley (")
 1700 1st Av. E. (")
 1800 2nd Av. E. (")
 1900 3rd Av. E. (")
 2000 4th Av. E. (")
 2100 5th Av. E. (")
 2200 6th Av. E. (")
 2300 7th Av. E. (")
 2400 8th Av. E. (")
 2500 Broadway E. (")
 2600 10th Av. E. (")
 2700 11th Av. E. (")
 2800 12th Av. E. (")
 2900 13th Av. E. (")
 3000 14th Av. E. (")

Collingwood St.—Extends from Pt. Gray Road south to 16th Av. W. 21st west of Granville S. (R&W) crosses on 4th Av. W.

1600 Pt. Gray (R&W)
 1700 1st Av. W. (")
 1800 2nd Av. W. (")
 1900 3rd Av. W. (")
 2000 4th Av. W. (")
 2100 5th Av. W. (")
 2200 6th Av. W. (")
 2300 7th Av. W. (")
 2400 8th Av. W. (")
 2500 Broadway W. (")
 2600 10th Av. W. (")
 2700 11th Av. W. (")
 2800 12th Av. W. (")
 2900 13th Av. W. (")
 3000 14th Av. W. (")
 3100 15th Av. W. (")
 3200 16th Av. W. (")

Columbia Av.—Extends from Alexander St. south to Pender St. E. 1st west of Westminster. (G-Y) cross on Powell. (G&W-R-R&W-W) cross on Hastings E.
 100 Alexander (G-G&W-R-R&W-W-Y)
 200 Powell (")
 300 Cordova E. (")

400 Hastings E. (G&W-R-R&W-W)
 — Pender E. (")

Columbia St.—Extends from Front St. south to City Boundary. 4th west of Westminster S. (R-W) parallels 4 blocks east from 1700 to 2500. (Y) parallels 4 blocks east from 1700 to 3100. (W) crosses on Broadway W.

1700 Front (R-W-Y)
 1800 Dufferin (")
 1900 Lorne (")
 2000 Lansdowne (")
 2100 5th Av. W. (")
 2200 6th Av. W. (")
 2300 7th Av. W. (")
 2400 8th Av. W. (")
 2500 Broadway W. (")
 2600 10th Av. W. (")
 2700 11th Av. W. (")
 2800 12th Av. W. (Y)
 2900 13th Av. W. (")
 3000 14th Av. W. (")
 3100 15th Av. W. (")

Comox St.—Extends from Burrard St. north-west to City Boundary. 2nd north of Davie. (R-Y) parallel 2 blocks south, from 1000 to 1800 and crosses on Denman.

1000 Burrard (R-Y)
 1100 Thurlow (")
 1200 Bute (")
 1300 Jervis (")
 1400 Broughton (")
 1500 Nicola (")
 1600 Cardero (")
 1700 Bidwell (")
 1800 Denman (")
 1900 Gilford (")
 2000 Chilco (")
 — Park Road (")

Cordova St. East—Extends from Carrall St. east to Vernon Drive. 1st north of Hastings E. (RB) parallels 1 block south.

1 Carrall (G)
 100 Columbia (")
 200 Westminster (")
 300 Gore (")
 400 Dunlevy (")
 500 Jackson (")
 600 Carl (")
 700 Heatley (")
 800 Hawks (")
 900 Campbell (")
 1000 Raymur (")

Phone 705.

P. O. Box 476

75 Newly Furnished Rooms, Steam Heated and
Done Up in First Class Style.

ATLANTIC HOTEL

First Class Restaurant Open Day and Night.
Billiard Room in Connection.

Watson & Marchese

PROPRIETORS

73-79 Cordova Street W. VANCOUVER, B. C.

ALFRED HUGGETT

“THE ARTIST CRAFTSMAN”

OF

824 PENDER ST., - - WEST

(Two Blocks from Granville Street)

Co-operates with his patrons in making the “Home Beautiful,” and gives the benefit of his wide experience in the decorative and furnishing business to prospective clients (free of charge).

Agent for Waring & Gillow, Limited,
London, England, Decorators and
Furnishers to the King.

1100 Boundary ("")
 — Vernon ("")

Cordova St. West—Extends from Carrall St. north-west to Granville St. 1st north of Hastings. W. (G-Y) on Cordova from 1 to 200. (G-G & W-R-R & W-W-Y) parallel 1 block south, from 200 to 699.

1 Carrall (G-Y)
 100 Abbott ("")
 200 Cambie ("")
 400 Homer (G-G&W-R-R&W-W-Y)
 500 Richards ("")
 600 Seymour ("")
 — Granville ("")

Cornwall St. North—Extends from Chestnut St. west to Trafalgar Road. 10th north of Broadway W. (G&W) parallels 1 block north.

1800 Chestnut (G&W)
 1900 Cypress ("")
 — Walnut ("")
 2000 Maple ("")
 — Laburnum ("")
 2100 Arbutus ("")
 2200 Yew ("")
 2300 Vine ("")
 2400 Balsam ("")
 2500 Larch ("")
 — Trafalgar ("")

Cornwall St. West.—South side. Name changed to Blenheim Road, which see.

Cotton Drive—Extends from Venables St. south to 3rd Av. E. 14th east of Westminster, between Woodland Drive & Park Drive. (R&W) crosses on Venables and parallels 1 block east.

900 Venables (R&W)
 1000 Parker ("")
 1100 Napier ("")
 1200 William ("")
 1300 Charles ("")
 1400 Bismarck ("")
 1500 Grant ("")
 1600 Graveley ("")
 1700 1st Av. E. ("")
 1800 2nd Av. E. ("")
 — 3rd Av. E. ("")

Crab Tree Lane—Extends from and is a continuation of Raymour Av.

south-east to Boundary Ave. 8th east of Westminster. (G&W) crosses Raymour at Venables.

1300 Raymour (G&W)
 — Boundary ("")

Creelman Av.—Extends from Chestnut St. west to Arbutus St. 12th north of Broadway W. (G&W) parallels 1 block south.

1800 Chestnut (G&W)
 1900 Cypress ("")
 — Walnut ("")
 2000 Maple ("")
 — Laburnum ("")
 — Arbutus ("")

Cypress St.—Extends from English Bay south to 13th Av. W. 4th west of Granville S. (G&W) crosses on Short St. (R&W) crosses on 4th Av. W. (W) parallels 4 blocks east, from 1800 to 2500.

900 English Bay (G&W)
 1000 Ogden ("")
 1100 McNicholl ("")
 1200 Whyte ("")
 1300 Creelman ("")
 1400 Short ("")
 1500 Cornwall ("")
 1600 York ("")
 1700 1st Av. W. ("")
 1800 2nd Av. W. (R&W-W)
 1900 3rd Av. W. ("")
 2000 4th Av. W. ("")
 2100 5th Av. W. ("")
 2200 6th Av. W. ("")
 2300 7th Av. W. ("")
 2400 8th Av. W. ("")
 2500 Broadway W. ("")
 2600 10th Av. W. ("")
 2700 11th Av. W. ("")
 2800 12th Av. W. (R&W)
 — 13th Av. W. ("")

Davie St.—Extends from Homer St. north-west to Denman St. (G&W-R&W-W) cross on Granville. (R-Y) on Davie from 700 to 1800.

400 Homer (G&W-R&W-W-R)
 500 Richards ("")
 600 Seymour ("")

Terminal Tea Rooms

AND

ICE CREAM PARLOR

Entrance to Stanley Park

CONFECTIONERY, FRUITS
TOBACCOS AND CIGARS

Take a bag of peanuts with you to feed
the animals

Phone L-2115

F. T. COPP, Prop.

1997 Georgia St.

M c N A I R

Real Estate Office

N. McNAIR, Manager

We make a Specialty of Houses,
Lots, Acreage
and Timber Lands.
Collecting of Rents, Etc.

Parties Listing with us shall have
a Square Deal and Courteous
Treatment

620 Westminster Ave.

Phone 5815

- 700 Granville (")
- 800 Howe (")
- 900 Hornby (")
- 1000 Burrard (")
- 1100 Thurlow (R-Y)
- 1200 Bute (")
- 1300 Jervis (")
- 1400 Broughton (")
- 1500 Nicola (")
- 1600 Cardero (")
- 1700 Bidwell (")
- Denman (")

Denman St. — Extends from Burrard Inlet south-west to Beach Av. 11th west of Granville. (G) crosses on Georgia. (R-Y) on Denman from 800 to 1200.

- 700 Georgia (G)
- Alberni (")
- 800 Robson (")
- Haro (R-Y)
- 900 Lane (")
- Barclay (")
- 1000 Nelson (")
- Comox (")
- 1100 Lane (")
- Pendrell (")
- 1200 Davie (")
- Beach (")

Dock St.—Extends from 7th Av. E. south to 13th Av. E. 11th east of Westminster S. (R) on Broadway E. to 3 blocks west.

- 2300 7th Av. E. (R)
- 2400 8th Av. E. (")
- 2500 Broadway E. (")
- 2600 10th Av. E. (")
- 2700 11th Av. E. (")
- 2800 12th Av. E. (")
- 13th Av. E. (")

Drake St.—Extends from Homer St. north-west to Burrard St. 1st south of Davie. (G&W-R&W-W) cross on Granville.

- 400 Homer (G&W-R&W-W)
- 500 Richards (")
- 600 Seymour (")
- 700 Granville (")
- 800 Howe (")
- 900 Hornby (")
- Burrard (")

Dufferin St. East—Extends from Ontario St. easterly to Prince Edward St. 7th north of Broadway E. (R-W-Y) cross on Westminster

- 1 Ontario (R-W-Y)
- 100 Quebec (")
- 200 Westminster (")
- 300 Lorne (")
- 400 Lansdowne (")
- Prince Edward (")

Dufferin St. West—Extends from Ontario St. westerly to Bridge St. 7th north of Broadway W. (R-W-Y) cross on Westminster 2 blocks east.

- 1 Ontario (R-W-Y)
- 100 Manitoba (")
- 200 Columbia S. (")
- 300 Alberta (")
- 400 Yukon (")
- Bridge (")

Dunbar St. — Extends from English Bay, south to 16th Av. W. 22nd west of Granville. (R&W) crosses on 4th Av. W.

1500 English Bay (R&W)

- 1600 Pt. Gray (")
- 1700 1st Av. W. (")
- 1800 2nd Av. W. (")
- 1900 3rd Av. W. (")
- 2000 4th Av. W. (")
- 2100 5th Av. W. (")
- 2200 6th Av. W. (")
- 2300 7th Av. W. (")
- 2400 8th Av. W. (")
- 2500 Broadway W. (")
- 2600 10th Av. W. (")
- 2700 11th Av. W. (")
- 2800 12th Av. W. (")
- 2900 13th Av. W. (")
- 3000 14th Av. W. (")
- 3100 15th Av. W. (")
- 3200 16th Av. W. (")

Dundas St. — Extends from Powell St. east to City Boundary. 4th north of Hastings E. (G) crosses on Powell.

- 2000 Powell (G)
- 2100 Lakewood (")
- 2200 Templeton (")
- 2300 Garden (")

Dunlevy Av. — Extends from Railway St. south to Prior St. 2nd east of Westminster. (G) crosses on Powell. (RB-R&W) cross on Hastings E. (G&W) crosses on Harris. (R-W-Y) parallel 2 blocks west.

- 1 Railway (G)
- 100 Alexander (")



A. STUART

LADIES' TAILOR

Habit and Breeches Maker

FIRST CLASS WORK ONLY.

551 GEORGIA STREET.

PHONE 5085

(New Masonic Temple Block)

C. A. IRVINE

PHONE 1041

T. HARWOOD

Electric Express Co.

EXPRESS AND DRAY

ALL KINDS OF CARTAGE WORK

FURNITURE MOVING A SPECIALTY

43 Cordova Street

East

200 Powell ("")
 300 Cordova (RB-R&W-G)
 400 Hastings E. ("")
 500 Pender E. (G&W-R-RB-R&W-Y)
 600 Keefer (G&W-R-W-Y)
 700 Harris ("")
 800 Barnard ("")
 — Prior ("")

Dunsmuir St.—Extends from half block south-east of Beatty St. north-west to Burrard St. 2nd north of Robson. (G&W-R-R&W-W-Y) cross on Granville.

6—STREETS Cl
 100 Beatty (G&W-R-R&W-W-Y)
 200 Cambie ("")
 300 Hamilton ("")
 400 Homer ("")
 500 Richards ("")
 600 Seymour ("")
 700 Granville ("")
 800 Howe ("")
 900 Hornby ("")
 — Burrard ("")

Dupont St.—Name changed to Pender St. E., which see.

Eaton St.—Extends from Powell St. east to City Boundary. 7th north of Hastings E. (G) crosses on Powell.

2100 Powell (G)
 2200 Templeton ("")
 2300 Garden ("")

Eveleigh St.—Extends from Burrard St. north-west to Thurlow St. 4th north of Robson. (G) parallels 1 block north.

1000 Burrard (G)
 — Thurlow ("")

Fir St.—Extends from 1st Av. W. south to 13th Av. W. 1st west of Granville S. (R&W) crosses on 4th Av. W. (W) parallels 1 block east, to 2500.

1700 1st Av. W. (R&W-W)
 1800 2nd Av. W. ("")
 1900 3rd Av. W. ("")
 2000 4th Av. W. ("")
 2100 5th Av. W. ("")

2200 6th Av. W. ("")
 2300 7th Av. W. (W)
 2400 8th Av. W. ("")
 2500 Broadway W. ("")
 2600 10th Av. W. ("")
 2700 11th Av. W. ("")
 2800 12th Av. W. ("")
 — 13th Av. W. ("")

Front St. East—Extends from Ontario St. east to Prince Edward St. 8th north of Broadway E. (R-W-Y) cross on Westminster.

1 Ontario (R-W-Y)
 100 Quebec ("")
 200 Westminster ("")
 300 Lorne ("")
 400 Lansdowne ("")
 — Prince Edward ("")

Front St. West—Extends from Ontario St. west to Bridge St. 8th north of Broadway W. (R-W-Y) cross on Westminster 2 blocks east.

1 Ontario (R-W-Y)
 100 Manitoba ("")
 200 Columbia St. ("")
 300 Alberta ("")
 400 Yukon ("")
 — Bridge ("")

Garden Drive—Extends from Trinity St. south to City Boundary. 20th east of Westminster. (G) parallels Garden Drive N. from 1 to 499. (RB) crosses Garden Drive S. on Hastings E. (R&W) parallels 6 blocks west from 900 to 3000.

Garden Drive N.

1 Dundas (G)
 100 Oxford ("")
 200 Cambridge ("")
 300 Eaton ("")
 400 McGill ("")
 — Trinity.

Garden Drive S.

1 Dundas (G)
 100 Triumph ("")
 200 Pandora ("")
 300 Albert (G-RB)
 400 Hastings E. (RB)
 500 Pender E. ("")
 600 Keefer ("")
 700 Harris ("")
 800 Barnard (R&W)
 900 Venables ("")
 1000 Parker ("")
 1100 Napier ("")

Telephone B 3945**1407 Park Drive****THE MANITOBA HARDWARE CO.**

Dealers in
**PAINTS, OILS, GRANITEWARE,
 TINWARE, STOVES AND
 RANGES.**

Builders' Supplies a Specialty.

D. NESBITT, Proprietor. VANCOUVER, B. C.

CITY AGENT FOR

Railway Passengers Assurance Company

COVERS EVERY ACCIDENT AND ILLNESS.
 RATES ON APPLICATION.

R. G. WARD.

Phone 5832.

222 Winch Building
 Vancouver, B. C.

Hunter's

ONE OF THE LEADING CLOTHING
 AND FURNISHING HOUSES IN VAN-
 COUVER.

WE ARE HEADQUARTERS FOR OUT-
 FITTING PROSPECTORS, MINERS,
 LUMBER CRUISERS AND LOGGERS.

Phone 1371.

74 Cordova Street West
 VANCOUVER, B. C.

1200 William (")
 1300 Charles (")
 1400 Bismarck (")
 1500 Grant (")
 1600 Graveley (")
 1700 1st Av. E. (")
 1800 2nd Av. E. (")
 1900 3rd Av. E. (")
 2000 4th Av. E. (")
 2100 5th Av. E. (")
 2200 6th Av. E. (")
 2300 7th Av. E. (")
 2400 8th Av. E. (")
 2500 Broadway E. (")
 2600 10th Av. E. (")
 2700 11th Av. E. (")
 2800 12th Av. E. (")
 3000 14th Av. E. (")
 — 15th Av. E. (")

George St.—Extends from Venables St. south to False Creek. 10th east of Westminster. (R&W) crosses on Venables.

900 Venables (R&W)

1000 Parker (")

1100 Napier (")

1200 William (")

Georgia St.—Extends from Beatty St. north-west to City Boundary. To 900 1st north of Robson, thence 2nd north. (G&W-R-R&W-W-Y) cross on Granville. (G) parallels 2 blocks north from 700 to 1300, thence 1 block. (R-Y) parallels 2 blocks south from 700 to 1800.

100 Beatty (G-G&W-R-R&W-W-Y)

200 Cambie (")

300 Hamilton (")

400 Homer (")

500 Richards (")

600 Seymour (")

700 Granville (")

800 Howe (")

900 Hornby (")

1000 Burrard (G-R-Y)

1100 Thurlow (")

1200 Bute (")

1300 Jervis (")

1400 Broughton (")

1500 Nicola (")

1600 Cardero (")

1700 Bidwell (")

1800 Denman (")

1900 Gilford (")

— Chilco (G)

Gilford St.—Extends from Burrard Inlet

south-west to Beach Av. 12th west of Granville. (G) crosses on Georgia. (R-Y) parallel 1 block east.

700 Georgia (G)

— Alberni (")

800 Robson (")

— Haro (R-Y)

900 Lane (")

— Barclay (")

1000 Nelson (")

— Comox (")

1100 Lane (")

— Pendrell (")

— Beach (")

Glen Drive—Extends from False Creek south to City Boundary. 11th east of Westminster S. (R) on Broadway E. to 4 blocks west. (R&W) parallels 6 blocks east. 2200 6th Av. E. (R&W)
 2300 7th Av. E. (R-R&W)

2400 8th Av. E. (")

2500 Broadway E. (")

2600 10th Av. E. (")

2700 11th Av. E. (")

2800 12th Av. E. (")

2900 13th Av. E. (")

3000 14th Av. E. (")

Gore Av.—Extends from C. P. R. Tracks south to False Creek. 1st east of Westminster. (G) crosses on Powell. (RB-R&W) cross on Hastings E. (G&W) cross on Harris. (R-W-Y) parallel 1 block west.

1 C. P. R. Track (G)

— Railway (")

100 Alexander (")

200 Powell (")

300 Cordova (RB-R&W-G)

400 Hastings E. (")

500 Pender E. (G&W-R-RB-R&W-W-Y)

600 Keefer (G&W-R-W-Y)

700 Harris (")

800 Barnard (")

900 Prior (")

Grant St.—Extends from False Creek east to Garden Drive. 11th south of Hastings E. (R&W) crosses on Park.

1200 False Creek (R&W)

Phone
2036.

721 WESTMINSTER
AVENUE.

Murray Bros.

Plumbing and Heating

Estimates Furnished. All Work Guaranteed.
Only First Class Mechanics Employed.

Pacific Coast Fish Curing Co.

WHOLESALE FISH MERCHANTS.

Dealers and Shippers in All Kinds of Cured and
Smoked Fish.

Phone 4307. Office and Works: 920 Park Lane.

LeFurgey & Co., Ltd.

REAL ESTATE, CITY, SUBURBAN AND
FARM LANDS.

Call, Phone or Write

Phone 2064. 328 Hastings Street.
VANCOUVER, B. C

Telephone 1811

M. Furuya Co.

Japanese
Goods

46 Hastings St. West

- 1300 Clark (")
 1400 Odium (")
 — McLean (")
 1500 Woodland (")
 1600 Cotton (")
 1700 Park (")
 1800 Salsbury (")
 1900 Victoria (")
 2000 Semlin (")
 2100 Lakewood (")
 2200 Templeton (")
 — Garden (")
- Granville St.**— Extends from Cordova St. W. south-west to False Creek, thence south to 15th Av. W.
- 300 Cordova W. (G-G&W-R-R&W-W-Y)
 400 Hastings W. (")
 500 Pender W. (")
 800 Dunsmuir (G&W-R-R&W-W-Y)
 700 Georgia (")
 800 Robson (")
 900 Smithe (G&W-R-R&W-W)
- 1000 Nelson (")
 1100 Helmcken (")
 1200 Davie (")
 1300 Drake (G&W-R&W-W)
 1400 Pacific (")
 — Beach (")
 — False Creek (")
- 1800 2nd Av. W. (R&W-W)
 1900 3rd Av. W. (")
 2000 4th Av. W. (")
 2100 5th Av. W. (")
 2200 6th Av. W. (W)
 2300 7th Av. W. (")
 2400 8th Av. W. (")
 2500 Broadway W. (")
 2600 10th Av. W. (")
 2700 11th Av. W. (")
 2800 12th Av. W. (")
 2900 13th Av. W. (")
 3000 14th Av. W. (")
 — 15th Av. W. (")
- Graveley St.**— Extends from Clark Drive east to City Boundary. 12th south of Hastings E. (R&W) crosses on Park.
- 1300 Clark (R&W)
 1400 McLean (")
 1500 Woodland (")
 1600 Cotton (")
 1700 Park (")
 1800 Salsbury (")
 1900 Victoria (")

- 2000 Semlin (")
 — Lakewood (")
 2300 Garden (")
- Grove Crescent**—Is a continuation of Jackson and Heatley Av's. and extends from one to the other in crescent form. 5th south of Hastings E. (G&W) parallels 3 blocks north.
- 500 Jackson (G&W)
 600 Grove St. W. (")
 800 Grove St. E. (")
- Grove St.**—Extends from Grove Crescent West, east to Grove Crescent East. 6th south of Hastings E. (G&W) parallels 3 blocks north.
- 500 Grove Crescent W. (G&W)
 600 Carl (")
 — Grove Crescent E.
- Hamilton St.**— Extends from Hastings St. W. south-west to Smithe St. 4th east of Granville. (G-G&W-R-R&W-W-Y) cross on Hastings W. (G&W-R-R&W-W-Y) parallel 4 blocks west.
- 400 Hastings W. (G-G&W-R-R&W-W-Y)
 500 Pender W. (")
 600 Dunsmuir (")
 700 Georgia (")
 800 Robson (")
 — Smithe (G-G&W-R-R&W-W)
- Haro St.**—Extends from Burrard St. north-west to City Boundary. 1st south of Robson. (R-Y) parallel 1 block north, from 700 to 1800 and crosses on Denman.
- 1000 Burrard (R-Y)
 1100 Thurlow (")
 1200 Bute (")
 1300 Jervis (")
 1400 Broughton (")
 1500 Nicola (")
 1600 Cardero (")
 1700 Bidwell (")
 1800 Denman (")
 1900 Gilford (")
 2000 Chilco (")
 — Park Road (")

A. W. LePage Gasoline Engine & Supply Co.

Call and inspect our stock of Ralaco, Campbell
and Rochester Engines 2 and 4 cycle.

MARINE WAYS.

1773 Georgia St.

Phone 3224.

VANCOUVER, B. C.

EDWARD CHAPMAN

British Importer of Men's Furnishings, Hats and
Hosiery.

Davis Chambers.

613 Hastings St. W.,

Phone 1167.

VANCOUVER, B. C.

Headquarters for

Souvenirs, Novelties, Curios, Etc.

Honig's Stationery Co.

133 Hastings Street E.

VANCOUVER, B. C.

C. GRAY

REAL ESTATE, TIMBER AND MINES.

533 Pender Street.

VANCOUVER, B. C.

Phone L4073.

L. HAUSMAN, Prop.

KOSHER MEAT MARKET

Groceries and Provisions

AT COMPETITIVE PRICES

135 Cordova Street E.

VANCOUVER, B. C.

Harris St.—Extends from False Creek east to City Boundary. 3rd south of Hastings E. (R-W-Y) cross on Westminster. (G&W) on Harris from 200 to 1200, thence parallels 1 block north to 1900.
 100 False Creek (G&W-R-W-Y)
 200 Westminster (")
 300 Gore (")
 400 Dunlevy (G&W)
 500 Jackson (")
 600 Carl (")
 700 Heatley (")
 800 Hawks (")
 900 Campbell (")
 1000 Raymur (")
 1100 Boundary (")
 1200 Vernon (")
 1300 Clark (")
 1500 McLean (")
 1600 Woodland (")
 1700 Park (")
 1800 Salsbury (")
 1900 Victoria (")
 2000 Semlin (")
 2100 Lakewood (")
 2200 Templeton (")
 2300 Garden (")

Harwood St.—Extends from Burrard St. northwest to Bidwell St. 2nd south of Davie. (R-Y) parallel 2 blocks north.

1000 Burrard (R-Y)
 1100 Thurlow (")
 1200 Bute (")
 1300 Jervi: (")
 1400 Broughton (")
 1500 Nicola (")
 1600 Cardero (")
 — Bidwell (")

Hastings St. East—Extends from Carrall St. east to City Boundary. (G&W-R-W) on Hastings from 1 to 200. (R&W) from 1 to 900. (RB) from 1 to 2399.

1 Carrall (G&W-R-RB-R&W-W)

100 Columbia (")
 200 Westminster (")
 300 Gore (")
 400 Dunlevy (RB-R&W)
 500 Jackson (")
 600 Carl (")
 700 Heatley (")
 800 Hawks (")
 900 Campbell (")

1000 Raymour (")
 1100 Boundary (RB)
 1200 Vernon (")
 1300 Clark (")
 1500 McLean (")
 1600 Woodland (")
 1700 Park (")
 1800 Salsbury (")
 1900 Victoria (")
 2000 Semlin (")
 2100 Lakewood (")
 2200 Templeton (")
 2300 Garden (")

Hastings St. West—Extends from Carrall St. northwest to Burrard St. (G-G&W-R-R&W-W-Y) on Hastings W. to 700, thence (G) parallel 1 block south.

1 Carrall (G-G&W-R-RB-R&W-W-Y)

100 Abbott (")
 200 Cambie (G-G&W-R-R&W-W-Y)
 300 Hamilton (")
 400 Homer (")
 500 Richards (")
 600 Seymour (")
 700 Granville (")
 800 Howe (")
 900 Hornby (G)
 — Burrard (")

Hawks Av.—Extends from Alexander St. south to False Creek. 6th east of Westminster. (G) crosses on Powell. (RB-R&W) cross on Hastings E. (G&W) cross on Harris. (R&W) parallels 1 block east, from 400 to 900.

100 Alexander (G)
 200 Powell (")
 300 Cordova (G-RB-R&W)
 400 Hastings E. (RB-R&W)
 500 Pender E. (")
 600 Keefer (G&W)
 700 Harris (")
 800 Barnard (")
 900 Prior (")
 1000 Bay View (")

Heather St.—Extends from 6th Av. W. south to City Boundary. 9th west of Westminster S. (W) crosses on Broadway W.
 2200 6th Av. W. (W)
 2300 7th Av. W. (")
 2400 8th Av. W. (")

PHONE 2517

The Anglo American Lumber Company

LIMITED

MANUFACTURERS OF

FIR, SPRUCE AND
CEDAR LUMBER,
LATH, SHINGLES,
DOORS, MOULDINGS,
TURNINGS, Etc.

Specialties :

FIR DOORS

Steamed Fir Finish

Railway and Salisbury Drive

VANCOUVER, B. C.

CAPITAL \$1,000,000

**NATIONAL
FINANCE
COMPANY**

LIMITED

— FOR —

**REAL ESTATE
LOANS
INSURANCE**

**Cor. Pender and
Homer Sts.**

H. J. LITTLER

J. MASON

T. W. LITTLER

TERMINAL CITY IRON WORKS

IRON AND BRASS FOUNDERS

Engineers, Machinists, General Machinery
Repairs

PHONE 2884

135 POWELL STREET. VANCOUVER, B. C.

==== THE =====

PACIFIC COAST LUMBER MILLS

LIMITED

VANCOUVER, B. C.

=====

MANUFACTURERS
OF ALL KINDS OF

Rough and Dressed Lumber

“Best Brand” Shingles

Uniform High Grades & Prompt Delivery

1605 Georgia St. Phone 704

2500 Broadway W. ("")
 2600 10th Av. W. ("")
 2700 11th Av. W. ("")
 2800 12th Av. W. ("")
 2900 13th Av. W. ("")
 3000 14th Av. W. ("")
 3100 15th Av. W. ("")
 — 16th Av. W. ("")

Heatley Av. — Extends from Alexander St. south to Prior St. 5th east of Westminster (G) crosses on Powell. (RB-R&W) cross on Hastings E. (G&W) cross on Harris.

100 Alexander (G)
 200 Powell ("")
 300 Cordova (G-RB-R&W)
 400 Hastings E. (RB-R&W)
 500 Pender E. ("")
 600 Keefer (G&W)
 700 Harris ("")
 800 Barnard ("")
 — Prior ("")

Helmcken St. — Extends from Homer St. north-west to Burrard St. 1st north of Davie. (G&W-R&W-R-W) cross on Granville. (R-Y) parallel 1 block south.

400 Homer (G&W-R&W-R-W)
 500 Richards ("")
 600 Seymour ("")
 700 Granville ("")
 800 Howe ("")
 900 Hornby ("")
 — Burrard ("")

Hemlock St. — Extends from False Creek south to 15th Av. W. 1st east of Granville S (W) parallels 1 block west to 2500 and crosses on Broadway W.

2100 5th Av. W. (W)
 2200 6th Av. W. ("")
 2300 7th Av. W. ("")
 2400 8th Av. W. ("")
 2500 Broadway W. ("")
 2600 10th Av. W. ("")
 2700 11th Av. W. ("")
 2800 12th Av. W. ("")
 2900 13th Av. W. ("")
 3000 14th Av. W. ("")
 — 15th Av. W. ("")

Homer St. — Extends from Cordova St. W. south-west to Drake St. 3rd

east of Granville. (G-G&W - R - R&W - W - Y) cross on Hastings W. (G&W - R - R&W - W - Y) parallel 3 blocks west.
 300 Cordova W. (G-G&W-R-R&W-W-Y)
 400 Hastings W. ("")
 500 Pender W. ("")
 600 Dunsmuir ("")
 700 Georgia ("")
 800 Robson (G&W-R-R&W-W-Y)
 900 Smithe (G&W-R-R&W-W)
 1000 Nelson ("")
 1100 Helmcken ("")
 1200 Davie ("")
 1300 Drake (G&W-R&W-W)
 — Pacific ("")

Hornby St. — Extends from Hastings St. W. south-west to Beach Av. 2nd west of Granville. (G) crosses on Pender W. (R-Y) cross on Robson & Davie. (G&W-R&W-W) parallel 2 blocks east.

400 Hastings W. (G)
 500 Pender W. ("")
 600 Dunsmuir ("")
 700 Georgia (G&W-R&W-R-W-Y)
 800 Robson ("")
 900 Smithe ("")
 1000 Nelson ("")
 1100 Helmcken ("")
 1200 Davie ("")
 1300 Drake ("")
 1400 Pacific (G&W - R&W-W)
 — Beach ("")

Howe St. — Extends from C. P. R. Tracks south-west to Beach Av. 1st west of Granville. (G) crosses on Pender E. (R-Y) cross on Robson & Davie. (G&W-R&W-W) parallel 1 block east.

300 C. P. R. Tracks (G)
 400 Hastings W. ("")
 500 Pender W. ("")
 600 Dunsmuir (G&W-R-R&W-W-Y)
 700 Georgia ("")
 800 Robson ("")
 900 Smithe ("")
 1000 Nel on (G&W-R&W-W)

E. H. HEAPS & CO., Ltd.

MANUFACTURERS OF

Lumber, Lath, Shingles and Doors
and all descriptions of
Inside and Outside Finish

Phones 441 Local Office
292 Head Office

Head Office: Cor. Victoria Drive & Powell St.

EAST END PROPERTY A SPECIALTY

DAVE FORREST
REAL ESTATE

Phone 6111.

1812 Powell St.

VANCOUVER, B. C.

Indian Medicine Corporation

Incorporated in State of Washington, U.S.A.

**FAMOUS HINDU
Rheumatism Oil**

Sold in Australia, United States, India and Canada
GUARANTEE---Money returned if relief not given

SOLD BY ALL DRUGGISTS

- 1100 Helmcken (")
- 1200 Davie (")
- 1300 Drake (")
- 1400 Pacific (")
- Beach (")

Jackson Av. — Extends from Railway St. south to Prior St. 3rd east of Westminster. (G) crosses on Powell. (R B-R&W) cross on Hastings E. (G&W) cross on Harris.

- 1 Railway (G)
- 100 Alexander (")
- 200 Powell (")
- 300 Cordova (G-RB-R &W)
- 400 Hastings E. (")
- 500 Pender E. (")
- 600 Keefer (G&W)
- 700 Harris (")
- 800 Barnard (")
- Prior (")

Jervis St.—Extends from Burrard Inlet southwest to English Bay. 6th west of Granville. (G) crosses on Pender W. (R-Y) cross on Robson & Davie.

- 600 Pender W. (G)
- 700 Georgia (")
- Alberni (R-Y)
- 800 Robson (")
- Haro (")
- 900 Lane (")
- Barclay (")
- 1000 Nelson (")
- Comox (")
- 1100 Lane (")
- Pendrell (")
- 1200 Davie (")
- Burnaby (")
- 1300 Lane (")
- Harwood (")
- 1400 Pacific (")
- Beach (")

Keefer St.—Extends from False Creek east to City Boundary. 2nd south of Hastings E. (G&W-R-W-Y) cross on Westminster. (G&W) parallels 1 block south from 200 to 1200 on Keefer from 1200 to 1900, thence (RB) parallels 2 blocks north to 2399.

- 100 False Creek (G&W-R-W-Y)
- 200 Westminster (")
- 300 Gore (")
- 400 Dunlevy (G&W)

- 500 Jack.cn (")
- 600 Carl (")
- 700 Heatley (")
- 800 Hawks (")
- 900 Campbell (")
- 1000 Raymour (")
- 1100 Boundary (")
- 1200 Vernon (")
- 1300 Clark (")
- 1500 McLean (")
- 1600 Woodland (")
- 1700 Park (")
- 1800 Salsbury (")
- 1900 Victoria (")
- 2000 Semlin (")
- 2100 Lakewood (")
- 2200 Templeton (RB)
- 2300 Garden (")

Keith Drive — Extends from Graveley St. south to Broadway E. 12th east of Westminster S. (R) on Broadway E. to 5 blocks west. (R&W) parallels 5 blocks east.

- 1600 Graveley (R&W)
- 1700 1st Av. E. (")
- 1800 2nd Av. E. (")
- 2100 5th Av. E. (")
- 2200 6th Av. E. (")
- 2300 7th Av. E. (")
- 2400 8th Av. E. (")
- Broadway E. (R-R &W)

Laburnum St.—Extends from Creelman Av. south to Cornwall St. between Maple & Arbutus Sts. (G & W) crosses.

- 1300 Creelman (G&W)
- Cornwall (")

Lakewood Drive — Extends from Oxford St. south to City Boundary. 18th east of Westminster. (G) parallels Lakewood Drive N. from 1 to 99. (RB) crosses Lakewood Drive S. on Hastings E. (G&W) on Keefer stops 2 blocks west. (R & W) parallels 4 blocks west, from 900 to 3000.

Lakewood Drive N.
1 Dundas (G)
— Oxford (")

- Lakewood Drive S.**
- 1 Dundas (G)
 - 100 Triumph (")
 - 200 Pandora (")
 - 300 Albert (G-RB)

Phone 1494.

P. O. Box 563.

Pacific Coast Pipe Co., Ltd.

Office and Factory:

1551 Granville Street.

VANCOUVER, B. C.

MACHINE BANDED WOODEN STAVE, PRESSURE AND CONDUIT PIPE FOR WATER WORKS SYSTEMS, FIRE PROTECTION, IRRIGATION, ETC.

Telephone 5328.

Home Phone R2661.

Railway Realty Co.

Insurance & Loans

Corner Eleventh Avenue and Park Drive,
VANCOUVER, B. C.

J. DAIRON.

M. C. WILLIAMS.

Dairon & Williams

HIGH GRADE MANTELS TILE AND GRATES.

Ceramic and Mosaic Wall and Floor Tiles
a Specialty.

Office and Sample Rooms:

331 Pender Street,

Phone 4730.

VANCOUVER, B. C.

H. Bell-Irving & Co., Ltd.

Insurance, Fire and
Marine
Real Estate

LOANS SECURED.

Insurance Dept.—450 Cordova St. W.

Phone 261.

- 400 Hastings E. (RB)
 500 Pender E. (")
 600 Keefer (G&W)
 700 Harris (")
 800 Barnard (")
 900 Venables (R&W)
 1000 Parker (")
 1100 Napier (")
 1200 William (")
 1300 Charles (")
 1400 Bismarck (")
 1500 Grant (")
 1600 Graveley (")
 1700 1st Av. E. (")
 1800 2nd Av. E. (")
 1900 3rd Av. E. (")
 2000 4th Av. E. (")
 2100 5th Av. E. (")
 2200 6th Av. E. (")
 2300 7th Av. E. (")
 2400 8th Av. E. (")
 2500 Broadway E. (")
 2600 16th Av. E. (")
 2700 11th Av. E. (")
 2800 12th Av. E. (")
 2900 13th Av. E. (")
- Lansdowne Av. East—**
 Extends from Ontario St. easterly to Front St. 5th north of Broadway E. (R-W-Y) cross on Westminster.
 1 Ontario (R-W-Y)
 100 Québec (")
 200 Westminster (")
 300 Scotia (")
 400 Dufferin (")
 500 Front (")
- Lansdowne Av. West—**
 Extends from Ontario St. west to Dufferin St. 5th north of Broadway W. (R-W-Y) cross on Westminster 2 blocks east.
 1 Ontario (R-W-Y)
 100 Manitoba (")
 200 Columbia S. (")
 300 Alberta (")
 — Dufferin (")
- Lansdowne St.—** South side. Name changed to Waterloo Road, which see.
- Larch St.—** Extends from Pt. Gray Road south to 10th Av. W. 10th west of Granville S. (G&W) crosses at English Bay. (R & W) crosses on 4th Av. W.
 1400 Pt. Gray (G&W)
 1500 Cornwall (")
- 1600 York (")
 1700 1st Av. W. (R&W)
 1800 2nd Av. W. (")
 1900 3rd Av. W. (")
 2000 4th Av. W. (")
 2100 5th Av. W. (")
 2200 6th Av. W. (")
 2300 7th Av. W. (")
 2400 8th Av. W. (")
 2500 Broadway W. (")
 — 10th Av. W. (")
- Laurel St.—** Extends from False Creek south to 16th Av. W. 11th west of Westminster S. (W) crosses on Broadway W.
 2200 6th Av. W. (W)
 2300 7th Av. W. (")
 2400 8th Av. W. (")
 2500 Broadway W. (")
 2600 10th Av. W. (")
 — 11th Av. W. (")
 2800 12th Av. W. (")
 2900 13th Av. W. (")
 3000 14th Av. W. (")
 3100 15th Av. W. (")
 — 16th Av. W. (")
- Lily St.—** Extends from Napier St. south to William St. Between Victoria & Semlin Drives. (R&W) parallels 3 blocks west.
 1100 Napier (R&W)
 — William (")
- Lorne St. East—** Extends from Ontario St. easterly to Front St. 6th north of Broadway E. (R-W-Y) cross on Westminster.
 1 Ontario (R-W-Y)
 100 Québec (")
 200 Westminster (")
 300 Dufferin (")
 — Front (")
- Lorne St. West—** Extends from Ontario St. west to Dufferin St. 6th north of Broadway W. (R-W-Y) cross on Westminster 2 blocks east.
 1 Ontario (R-W-Y)
 100 Manitoba (")
 200 Columbia S. (")
 300 Alberta (")
 — Dufferin (")
- Macdonald St.—** Extends from Pt. Gray Road south to 16th Av. W. 13th west of Granville

Agencies Throughout Western Canada.

CHAS. STEELE REALTY CO.

REAL ESTATE AND FINANCIAL BROKERS

Telephone 2588

334 Pender Street W. VANCOUVER, B. C.

Electric Chandeliers, Irons, Heaters, Lamps and
Supplies Always in Stock.

SHARP & CO.

ELECTRICIANS.

House Wiring and Fitting a Specialty.

Phone 5184. 1126 Park Drive.

Vancouver, B. C.

J. E. DAOUST

LADIES' AND GENTS'

TAILORING

2302 Granville St. VANCOUVER, B. C.

Phone 980.

P. O. Box 76.

McEWEN & COMPANY

HOUSE SPECIALISTS.

REAL ESTATE AND TIMBER LANDS.

532 PENDER ST. W.

Alhambra Cigar Store

A. L. HENRY, Proprietor.

CIGARS, PIPES and TOBACCOS

207 Carrall Street.

S. (R&W) crosses on
4th Av. W.

- 1600 Pt. Gray (R&W)
- 1700 1st Av. W. (")
- 1800 2nd Av. W. (")
- 1900 3rd Av. W. (")
- 2000 4th Av. W. (")
- 2100 5th Av. W. (")
- 2200 6th Av. W. (")
- 2300 7th Av. W. (")
- 2400 8th Av. W. (")
- 2500 Broadway W. (")
- 2600 10th Av. W. (")
- 2700 11th Av. W. (")
- 2800 12th Av. W. (Y)
- 2900 13th Av. W. (")
- 3000 14th Av. W. (")
- 3100 15th Av. W. (")
- 3200 16th Av. W. (")

Mackenzie St.—Extends from Broadway W. south to 16th Av. W. 14th west of Granville S. (R&W) on 4th Av. W. 5 blocks north.

- 2500 Broadway W. (R&W)
- 2600 10th Av. W. (")
- 2700 11th Av. W. (")
- 2800 12th Av. W. (Y)
- 2900 13th Av. W. (")
- 3000 14th Av. W. (")
- 3100 15th Av. W. (")
- 3200 16th Av. W. (")

Manitoba St.—Extends from Front St. south to City Boundary. 3rd west of Westminster S. (R-W) parallels 3 blocks east, from 1700 to 2500. (Y) parallels 3 blocks east from 1700 to 3100. (W) crosses on Broadway W.

- 1700 Front (R-W-Y)
- 1800 Dufferin (")
- 1900 Lorne (")
- 2000 Lansdowne (")
- 2100 5th Av. W. (")
- 2200 6th Av. W. (")
- 2300 7th Av. W. (")
- 2400 8th Av. W. (")
- 2500 Broadway W. (")
- 2600 10th Av. W. (")
- 2700 11th Av. W. (")
- 2800 12th Av. W. (")
- 2900 13th Av. W. (")
- 3000 14th Av. W. (")
- 3100 15th Av. W. (")

Maple St.—Extends from English Bay south to 13th Av. W. 5th west of Granville S. (G&W) crosses between Creelman & Cornwall

Sts. (R&W) crosses on
4th Av. W.

- 900 English Bay (G&W)
- 1000 Ogden (")
- 1100 McNicholl (")
- 1200 Whyte (")
- 1300 Creelman (")
- 1500 Cornwall (")
- 1600 York (")
- 1700 1st Av. W. (R&W)
- 1800 2nd Av. W. (")
- 1900 3rd Av. W. (")
- 2000 4th Av. W. (")
- 2100 5th Av. W. (")
- 2200 6th Av. W. (")
- 2300 7th Av. W. (")
- 2400 8th Av. W. (")
- 2500 Broadway W. (")
- 2600 10th Av. W. (")
- 2700 11th Av. W. (")
- 2800 12th Av. W. (")
- 13th Av. W. (")

McGill St.—Extends from Powell St. east to City Boundary. 8th north of Hastings E. (G) crosses on Powell.

- 2200 Powell (G)
- 2300 Garden (")

McGuigan St.—Extends from Park Drive east to Victoria Drive. 6th north of Broadway E. (R & W) crosses on Park.

- 1700 Park (R&W)
- Victoria (")

McLean Drive—Extends from C. P. R. Tracks south to Broadway E. 12th east of Westminster. (G) crosses on Powell. (RB) crosses on Hastings E. (G&W) crosses on Keefer. (R&W) crosses on Venables, and parallels 3 blocks east, from 900 to 3000.

- 100 C. P. R. Tracks (G)
- 200 Powell (")
- 300 Albert (G-RB)
- 400 Hastings E. (RB)
- 500 Pender E. (")
- 600 Keefer (G&W)
- 700 Harris (")
- 800 Barnard (R&W)
- 900 Venables (")
- 1000 Parker (")
- 1100 Napier (")
- 1200 William (")
- 1300 Charles (")
- 1400 Bismarck (")
- 1500 Grant (")
- 1600 Graveley (")

Diamonds
Enter Canada
Duty Free

We are the Largest Importers
and the Largest Jewellery
Firm on Canadian Soil.

TOURISTS AND VISITORS

are always welcome to our big
Vancouver store.

=====
HENRY BIRKS & SONS, LIMITED

—
**DIAMOND MERCHANTS
AND JEWELERS**

GEO. E. TROREY, Managing Director.
COR. HASTINGS AND GRANVILLE STREETS.
All Cars Stop at Birks'

1700 1st Av. E. ("")
 1800 2nd Av. E. ("")
 1900 3rd Av. E. ("")
 2000 4th Av. E. ("")
 2100 5th Av. E. ("")
 2200 6th Av. E. ("")
 2300 7th Av. E. ("")
 2400 8th Av. E. ("")
 — Broadway E. ("")

McNicoll Av.—Extends from Chestnut St. west to English Bay. 14th north of Broadway W. (G&W) parallels 3 blocks south.
 1800 Chestnut (G&W)
 1900 Cypress ("")
 2000 Maple ("")
 2100 Arbutus ("")

McSpadden St.—Extends from Park Drive east to Victoria Drive. 5th north of Broadway E. (R&W) crosses on Park.

1700 Park (R&W)
 — Victoria ("")

Melville St.—Extends from Burrard St north-west to Pender St. 3rd north of Robson. (G) parallels 1000 2 blocks north, thence 1 block.

1000 Burrard (G)
 1100 Thurlow ("")
 1200 Bute ("")
 1300 Jervis ("")
 — Pender ("")

Napier St.—Extends from Boundary St. east to City Boundary. 7th south of Hastings E. (R&W) parallels 2 blocks north from 1100 to 1700 and crosses on Park.

1100 Boundary (R&W)
 — George ("")
 1200 Vernon ("")
 1300 Clark ("")
 1400 Odlum ("")
 — McLean ("")
 1500 Woodland ("")
 1600 Cotton ("")
 1700 Park ("")
 1800 Salsbury ("")
 1900 Victoria ("")
 — Lily ("")
 2000 Semlin ("")
 — Rose ("")
 2100 Lakewood ("")
 2200 Templeton ("")
 2300 Garden ("")

Nelson St.—Extends from Homer St. north-west to City Boundary. 700 to 999. 2nd north of Davie, thence 3rd north. (G&W-R&W-R-W) cross on Granville. (R-Y) parallel from 700 to 1800.

400 Homer (G&W-R-R &W-W)
 500 Richards ("")
 600 Seymour ("")
 700 Granville ("")
 800 Howe ("")
 900 Hornby ("")
 1000 Burrard ("")
 1100 Thurlow (R-Y)
 1200 Bute ("")
 1300 Jervis ("")
 1400 Broughton ("")
 1500 Nicola ("")
 1600 Cardero ("")
 1700 Bidwell ("")
 1800 Denman ("")
 1900 Gilford ("")
 2000 Chilco ("")
 — Park Road ("")

Nicola St.—Extends from Burrard Inlet south-west to English Bay. 8th west of Granville. (G) crosses on Pender W. (R-Y) cross on Pender W.

600 Burrard Inlet (G)
 700 Georgia ("")
 — Alberni (R-Y)
 800 Robson ("")
 — Haro ("")
 900 Lane ("")
 — Barclay ("")
 1000 Nelson ("")
 — Comox ("")
 1100 Lane ("")
 — Pendrell ("")
 1200 Davie ("")
 — Burnaby ("")
 1300 Lane ("")
 — Harwood ("")
 1400 Beach ("")

Ninth Av.—Name changed to Broadway, which see.

Oak St.—Extends from False Creek south to 15th Av. W. 5th east of Granville S. (W) crosses on Broadway W.

2200 6th Av. W. (W)
 2300 7th Av. W. ("")
 2400 8th Av. W. ("")
 2500 Broadway W. ("")

THE BIG RED

"SEEING VANCOUVER" AUTO

Leaves the office, opposite the new
lost Office, three times daily on a
trip through Stanley Park and the
city, including Vancouver's famous
Chinatown.

Fare \$1.00

ARCHIE WALKER, Proprietor.

Call and inspect our stock of

INDIAN CURIOS, BASKETS, SOUVENIRS,
POST CARDS, ETC.

716 Hastings Street W.

Phone 4597.

Autos for Hire

Opposite New Post Office.

P. Burns Co. Ltd.

WHOLESALE AND RETAIL

**Meat Merchants, Pork PACKERS,
and Live Stock Dealers**

Solicit your patronage for their different meats.

General Office:

18 Hastings Street W.

Phones Nos.

56 and 3317

- 2600 10th Av. W. (")
- 2700 11th Av. W. (")
- 2800 12th Av. W. (")
- 2900 13th Av. W. (")
- 3000 14th Av. W. (")
- 15th Av. W. (")

Ogden Av.—Extends from Chestnut St. westerly to Maple St. 15th north of Broadway W. (G&W) parallels 4 blocks south.

- 1800 Chestnut (G&W)
- 1900 Cypress (")
- Maple (")

Odium Drive— Extends from Venables St. south to Grant St. 12th east of Westminster. Between Clark & McLean Drives. (R&W) crosses on Venables.

- 900 Venables (R&W)
- 1000 Parker (")
- 1100 Napier (")
- 1200 Williams (")
- 1300 Charles (")
- 1400 Bismarck (")
- Grant (")

Ontario St. — Extends from Front St. south to City Boundary. 2nd west of Westminster S. (R-W) parallels 2 blocks east, from 1700 to 2500. (Y) parallels 2 blocks east from 1700 to 3100. (W) crosses on Broadway.

- 1700 Front (R-W-Y)
- 1800 Dufferin (")
- 1900 Lorne (")
- 2000 Lansdowne (")
- 2100 5th Av. (")
- 2200 6th Av. (")
- 2300 7th Av. (")
- 2400 8th Av. (")
- 2500 Broadway (")
- 2600 10th Av. (")
- 2700 11th Av. (")
- 2800 12th Av. (Y)
- 2900 13th Av. (")
- 3000 14th Av. (")
- 3100 15th Av. (")

Oxford St.—Extends from Powell St. east to City Boundary. 5th north of Hastings E. (G) crosses on Powell.

- 2000 Powell (G)
- 2100 Lakewood (")
- 2200 Templeton (")
- 2300 Garden (")

Pacific St.—Extends from Richards St. north-

west to Jervis St. From 500 to 999, 2nd south of Davie, thence 3rd south. (G&W-R&W-W) cross on Granville. (R-Y) parallel from 700 to 1200.

- 500 Richards (G&W-R & W-R-W)
- 600 Seymour (")
- 700 Granville (")
- 800 Howe (")
- 900 Hornby (")
- 1000 Burrard (")
- 1100 Thurlow (R-Y)
- 1200 Bute (")
- Jervis (")

Pandora St. — Extends from Woodland Drive east to City Boundary. 2nd north of Hastings E. (G) parallels 1 block north from 1600 to 1800, thence 2 blocks north to 2000 only. (RB) parallels 2 blocks south.

- 1600 Woodland (G-RB)
- 1700 Park (")
- 1800 Salisbury (")
- 1900 Victoria (")
- 2000 Semlin (")
- 2100 Lakewood (RB)
- 2200 Templeton (")
- 2300 Garden (")

Park Drive — Extends from Burrard Inlet south to City Boundary. 14th east of Westminster. (G) crosses on Powell. (R B) crosses on Hastings E. (G&W) crosses on Keefer. (R&W) on Park Drive from 900 to 3000.

- 1 Burrard Inlet (G)
- 100 Powell (")
- 200 Pandora (")
- 300 Albert (G-RB)
- 400 Hastings E. (RB)
- 500 Pender E. (")
- 600 Keefer (G&W)
- 700 Harris (")
- 800 Barnard (R&W)
- 900 Venables (")
- 1000 Parker (")
- 1100 Napier (")
- 1200 William (")
- 1300 Charles (")
- 1400 Bismarck (")
- 1500 Grant (")
- 1600 Graveley (")
- 1700 1st Av. E. (")
- 1800 2nd Av. E. (")

Hot and Cold Water.

Steam Heated.

European or American Plan.

BENGE ROOMS

J. W. PATTISON, Proprietor.

914 Pender St. West

First Class Cafe in Connection.

Phone 3431.

214-216 PENDER ST. E.

Metropolitan Furniture Co.

Cheapest House in the City for

FURNITURE, STOVES, Etc., Etc.Furniture on the Instalment System
at Right Prices.

Phone L4261

CHAPPELL BROS.**ENGINEERS and MACHINISTS**

Foot of Denman Street.

VANCOUVER, B. C.

Special attention given to repairs of
hulls and machinery. Launches built.
All work guaranteed and prices
reasonable.A Large Stock of Motor Fittings and Supplies
Always on Hand.

1900 3rd Av. E. ("")
 2000 4th Av. E. ("")
 2100 5th Av. E. ("")
 2200 6th Av. E. ("")
 2300 7th Av. E. ("")
 2400 8th Av. E. ("")
 2500 Broadway E. ("")
 2600 10th Av. E. ("")
 2700 11th Av. E. ("")
 2800 12th Av. E. ("")
 2900 13th Av. E. ("")
 3000 14th Av. E. ("")
 — 15th Av. E. ("")

Park Road — Extends
 from the intersection
 of Robson & Chilco
 Sts. south-westerly to
 English Bay. 14th west
 of Granville. (R-Y)
 parallel 3 blocks east.

— 800 Robson (R-Y)
 — Haro ("")
 E. 900 Lane ("")
 — Barclay ("")
 1000 Nelson ("")
 D. — Comox ("")
 1100 Lane ("")
 — Pendrell ("")
 — Beach ("")

Parker St.—Extends from
 False Creek east to
 City Boundary. 6th
 south of Hastings E.
 (R&W) parallels 1
 block north from 950
 to 1700 & crosses on
 Park.

— 950 False Creek (R&W)
 1000 Raymour ("")
 1100 Boundary ("")
 — George ("")
 1200 Vernon ("")
 1300 Clark ("")
 1400 Odlum ("")
 — McLean ("")
 1500 Woodland ("")
 1600 Cotton ("")
 1700 Park ("")
 1800 Salsbury ("")
 C. 1900 Victoria ("")
 2000 Semlin ("")
 2100 Lakewood ("")
 2200 Templeton ("")
 2300 Garden ("")

Pender St. East — Ex-
 tends from Carrall St.
 east to City Bound-
 ary. 1st south of Hast-
 ings E. (G&W-R-W-Y)
 cross on Westminster.
 (R & W) parallels 1
 block north from 1 to
 900. (RB) parallels 1

block north from 1 to
 2399.

1 Carrall (G&W-R-R
 B-R&W-W-Y)
 100 Columbia ("")
 200 Westminster ("")
 300 Gore ("")
 400 Dunlevy (RB-R&W)
 500 Jackson ("")
 600 Carl ("")
 700 Heatley ("")
 800 Hawks ("")
 900 Campbell ("")
 1000 Raymur ("")
 1100 Boundary (RB)
 1200 Vernon ("")
 1300 Clark ("")
 1500 McLean ("")
 1600 Woodland ("")
 1700 Park ("")
 1800 Salsbury ("")
 1900 Victoria ("")
 2000 Semlin ("")
 2100 Lakewood ("")
 2200 Templeton ("")
 2300 Garden ("")

Pender St. West—Ex-
 tends from Carrall St.
 north-west to Georgia
 St. 1st south of Hast-
 ings. (G&W-R-R&W-
 W-Y) cross on Gran-
 ville. (G&W-R-R&W-
 W) parallel 1 block
 north, from 1 to 700.
 (G) on Pender W. from
 700 to 1499.

1 Carrall (G&W-R-R
 B-R&W-W-Y)
 100 Abbott ("")
 200 Cambie (G&W-R-R
 &W-W-Y)
 300 Hamilton ("")
 400 Homer ("")
 500 Richards ("")
 600 Seymour ("")
 700 Granville ("")
 800 Howe ("")
 900 Hornby (G)
 1000 Burrard ("")
 1100 Thurlow ("")
 1200 Bute ("")
 1300 Jervis ("")
 1400 Broughton ("")
 1500 Nicola ("")
 — Georgia ("")

Pendrell St. — Extends
 from Burrard St. north-
 west to City Boundary.
 1st north of Davie. (R-
 Y) parallel 1 block
 south, from 1000 to
 1800.

Phone 316.

P. O. Box 859

Albion Iron Works Company, Ltd.

MARINE ENGINEERS, IRON AND BRASS
FOUNDERS AND BOILER MAKERS.

Repair work a Specialty

Saw Mill and Logging Machinery

Plans and Specifications Carefully Prepared.
Works:

225 Alexander Street . . VANCOUVER, B. C.

C. W. WATKINS, Notary Public.

G. H. MANNING.

C. C. THOMPSON

Watkins, Manning & Thompson

Real Estate, Insurance and Loans

Phone R4038

622 Robson Street.

VANCOUVER, B. C.

The Newest in Men's High Grade Clothing, Hats
and Furnishings always found at

BISHOP & CHAMBERS

Furnishers to Men

408 Westminster Ave.
(Next to Royal Bank)

Phone 492.
VANCOUVER, B. C.

European Plan - - - 75c. per day and up

Modern in every respect. Electric Light, Tele-
phones, Hot and Cold Water in every room
Steam Heat. Bar Unexcelled.

WINDSOR HOTEL

J. B. Simpson, Prop.

Phone 5165

748 GRANVILLE ST. VANCOUVER, B. C.
(OPPOSITE VANCOUVER OPERA HOUSE)

919 Granville St.

Phone 6141

San Francisco Fur Co.

E. A. ROBERTS

FASHIONABLE FURRIERS

MANUFACTURERS
OF

Seal Skin Garments and Fine Furs

Furs Stored

Repairing, Re-dyeing and Remodelling at Lowest Prices
All Work guaranteed satisfactory



Phone 2915

Insurance, Loans

W. H. BURLEY & CO.

REAL ESTATE BROKERS

Room 25, Bank of Hamilton Building

300 Hastings St. W

VANCOUVER, B. C.

CUNNINGHAM-SANDERSON LIMITED

BUILDERS' AND HOUSEHOLDERS' HARD-
WARE, PLUMBING AND HEATING.

Agents for

Torrid Zone Furnaces
Souvenir Stoves and Ranges
and
MAPLE LEAF PAINTS AND VARNISHES.

Phone 1267

823 Granville St

WEST END GARAGE COMPANY, LTD

Limited

British Columbia Agents for

McLaughlin-Buick, Chalmers
Detroit, Pope-Hartford
and Hudson Cars

Examine our lines before buying your new car
We have something new that will surprise you
Prices from \$900 to \$8,000.

West End Garage Co., Limited
424 Granville Street, VANCOUVER

Branch

B. C. AUTO COMPANY, LIMITED
1218 Wharf Street, VICTORIA, B. C.

- 1000 Burrard (R-Y)
- 1100 Thurlow (")
- 1200 Bute (")
- 1300 Jervis (")
- 1400 Broughton (")
- 1500 Nicola (")
- 1600 Cardero (")
- 1700 Bidwell (")
- 1800 Denman (")
- 1900 Gilford (")
- 2000 Chilco (")

— Park Road (")
Pine St.—Extends from 1st Av. W. south to 13th Av. W. 2nd west of Granville S. (R&W) crosses on 4th Av. W. (W) parallels 2 blocks east to 2500.

- 1700 1st Av. W. (R&W-W)
- 1800 2nd Av. W. (")
- 1900 3rd Av. W. (")
- 2000 4th Av. W. (")
- 2100 5th Av. W. (")
- 2200 6th Av. W. (")
- 2300 7th Av. W. (W)
- 2400 8th Av. W. (")
- 2500 Broadway W. (")
- 2600 10th Av. W. (")
- 2700 11th Av. W. (")
- 2800 12th Av. W. (")
- 13th Av. W. (")

Point Gray Road—Extends from Balsom St. westerly along the shore of English Bay to the City Boundary. (G&W) parallels from 2400 to 2600. (R&W) parallels from 3 to 5 blocks south.

- 2400 Balsom (G&W)
- 2500 Larch (")
- 2600 Trafalgar (")
- 2700 Stephens (")
- 2800 McDonald (R&W)
- 3000 Bayswater (")
- 3100 Balaclava (")
- 3200 Trutch (")
- 3300 Blenheim (")
- 3400 Waterloo (")
- 3500 Collingwood (")
- 3600 Dunbar (")
- 3700 Alma (")

Powell St.—Extends from Carrall St. east to Semlin Drive. 2nd north of Hastings E. (G) on Powell.
 1 Carrall (G)
 100 Columbia (")
 200 Westminster (")
 300 Gore (")
 400 Dunlevy (")

- 500 Jackson (")
- 600 Carl (")
- 700 Heatley (")
- 800 Hawks (")
- 900 Campbell (")
- 1000 Raymur (")
- 1100 Boundary (")
- 1200 Vernon (")
- 1300 Clark (")
- 1500 McLean (")
- 1600 Woodland (")
- 1700 Park (")
- 1800 Salsbury (")
- 1900 Victoria (")
- Semlin (")

Powell St. North—Extends from Dundas St. northerly to City Boundary. 4th north of Hastings E. (G) on Powell N.
 1 Dundas (G)
 100 Oxford (")
 200 Cambridge (")
 300 Eaton (")
 400 McGill (")
 500 Trinity (")

Prince Edward St.—Extends from False Creek south to City Boundary. 4th east of Westminster S. (R) crosses on Broadway E. (W) on Broadway E. to 4 blocks west. (Y) parallels 4 blocks west.

- 2000 Front (R-Y)
- Dufferin (")
- 2100 5th Av. E. (")
- 2200 6th Av. E. (")
- 2300 7th Av. E. (")
- 2400 8th Av. E. (R-W-Y)
- 2500 Broadway (")
- 2600 10th Av. E. (")
- 2700 11th Av. E. (")
- 2800 12th Av. E. (Y)
- Westminster Road (")
- 2900 13th Av. E. (")
- 3000 14th Av. E. (")
- 3100 15th Av. E. (")
- 16th Av. E. (")

Princess St.—Name changed to Pender St. East, which see.

Prior St.—Extends from False Creek east to half block east of Campbell Av. 5th south of Hastings E. (R-W-Y) cross on Westminster. (G&W) parallels 2 blocks north.

HENRY & HUMPHREY

HARDWARE, STOVES, TINWARE, ALL KINDS
OF SHEET METAL AND FURNACE WORK

Agents:

GURNEY-TILDEN STOVES AND RANGES.
SHERWIN-WILLIAMS PAINTS OILS AND
VARNISHES.

Phone 1732 Granville St. and Seventh Ave
VANCOUVER, B. C.

Meals 15 cents up.

Meal Tickets \$3.00.

Oregon Coffee House Co.

Newly Furnished and
Up-to-Date

1547 WESTMINSTER AVENUE.
(Near City Hall) VANCOUVER, B. C.

Phone Inquiry

Musgrave Shoe Repair Factory

MUSGRAVE BROS. Props.

REPAIRING OF ALL KINDS DONE
ON SHORT NOTICE

Quick Work and Satisfaction Our Motto.

210 Barnard St., near Westminster Ave.
VANCOUVER, B. C.

- 100 False Creek (G&W-R-W-Y)
 200 Westminster (")
 300 Gore (")
 400 Dunlevy (G&W)
 500 Jackson (")
 600 Carl (")
 700 Heatley (")
 800 Hawks (")
 900 Campbell (")
- Quebec St.**—Extends from Front St. south to 16th Av. E. 1st west of Westminster S. (R-W) parallels 1 block east from 1700 to 2500. (Y) parallels 1 block east from 1700 to 3100. (W) crosses on Broadway E.
- 1700 Front (R-W-Y)
 1800 Dufferin (")
 1900 Lorne (")
 2000 Lansdowne (")
 2100 5th Av. E. (")
 2200 6th Av. E. (")
 2300 7th Av. E. (")
 2400 8th Av. E. (")
 2500 Broadway E. (")
 2600 10th Av. E. (")
 2700 11th Av. E. (")
 2800 12th Av. E. (Y)
 2900 13th Av. E. (")
 3000 14th Av. E. (")
 3100 15th Av. E. (")
 — 16th Av. E. (")
- Railway St.**—Extends from Gore Av. easterly to Carl Av. 4th north of Hastings E. (G) parallels 2 blocks south.
- 300 Gore (G)
 400 Dunlevy (")
 500 Jackson (")
 — Carl (")
- Raymur Av.**—Extends from Powell St. south to Crab Tree Lane. 8th east of Westminster. (G) crosses on Powell. (RB) cross on Hastings E. (G&W) cross on Harris. (R&W) parallels 1 block west from 400 to 900.
- 200 Powell (G)
 300 Cordova E. (G-RB)
 400 Hastings E. (RB-R&W)
 500 Pender E. (")
 600 Keefer (G&W)
 700 Harris (")
- 800 Barnard (")
 900 Venables (")
 1000 Parker (")
 1200 William (")
- Richards St.**—South side. Name changed to Balclava Road, which see.
- Richards St.**—Extends from Cordova St. W. south-west to Pacific St. 2nd east of Granville. (G) crosses on Hastings W. (G&W-R-R&W-W-Y) parallel 2 blocks west.
- 300 Cordova (G-G&W-R-R&W-W-Y)
 400 Hastings W. (")
 500 Pender W. (")
 600 Dunsmuir (")
 700 Georgia (G&W-R-R&W-W-Y)
 800 Robson (")
 900 Smithe (G&W-R-R&W-W)
 1000 Nelson (")
 1100 Helmcken (")
 1200 Davie (")
 1300 Drake (G&W-R&W-W)
 — Pacific (")
- Robson St.**—Extends from Beatty St. north-west to City Boundary. (G & W-R-R & W-W-Y) cross on Granville. (R-Y) on Robson from 700 to 1800.
- 100 Beatty (G&W-R-R&W-W-Y).
 200 Cambie (")
 300 Hamilton (")
 400 Homer (")
 500 Richards (")
 600 Seymour (")
 700 Granville (")
 800 Howe (")
 900 Hornby (")
 1000 Burrard (R-Y)
 1100 Thurlow (")
 1200 Bute (")
 1300 Jervis (")
 1400 Broughton (")
 1500 Nicola (")
 1600 Cardero (")
 1700 Bidwell (")
 1800 Denman (")
 1900 Gilford (")
 2000 Chilco (")
 — Park Drive (")
- Rose St.**—Extends from Napier St. south to

Brown Bros. & Co., Limited

FLORISTS

Cut Flowers. Funeral Emblems a Specialty.

59 Hastings Street East
Phone 988

1160 Georgia Street
Phone 109

Greenhouses:

21st Street and Westminster Ave. . . Phone L3131

F. T. O'DONOVAN

REAL ESTATE, MORTGAGES, SURETY
BONDS.

Phone 559.

447-449 Pender Street.

VANCOUVER, B. C.

Phone 5726.

F. O. Box 536.

W. TINNEY

BUILDER AND CONTRACTOR.

221 Winch Building.

VANCOUVER, B. C.

D. W. STUART

STATIONERY, NOTIONS, PICTURE POST
CARDS, SCHOOL SUPPLIES.

1848 PARK DRIVE

Horse Shoe Coffee House

Our Dinners
a Specialty



Short Orders
at All Hours

971 Westminster Ave.

William St. Between
Semlin & Lakewood
Drives. (R&W) paral-
lels 5 blocks west.
1100 Napier (R&W)
— William (")

Salsbury Drive—Extends
from Burrard Inlet
south to 1st Av. E.
15th east of Westmin-
ster. (G) crosses on
Powell. (RB) crosses
on Hastings E. (G&
W) crosses on Keefer
R & W) parallels 1
block west, from 900
to 3000.

Salsbury Drive N.

1 Wilson (G)

— Stewart (")

Salsbury Drive S.

1 Wilson (G)

100 Powell (")

— Triumph (")

200 Pandora (")

300 Albert (G-RB)

400 Hastings E. (RF)

500 Pender E. (")

600 Keefer (G&W)

700 Harris (")

800 Barnard (R&W)

900 Venables (R&W)

1000 Parker (")

1100 Napier (")

1200 William (")

1300 Charles (")

1400 Bismarck (")

1500 Grant (")

1600 Graveley (")

— 1st Av. E. (")

Scotia St.—Extends from

Lansdowne Av. E.

south to Broadway E.

1st east of Westmin-

ster S. (R) crosses on

Broadway E. (R-W-Y)

parallels 1 block west.

2000 Lansdowne E. (R-

W-Y)

2100 5th Av. E. (")

2200 6th Av. E. (")

2300 7th Av. E. (")

2400 8th Av. E. (")

— Broadway E. (")

Scott St.—Extends from

False Creek south to

City Boundary. 8th

east of Westminster

S. (R) crosses on

Broadway E.

2100 5th Av. E. (R)

2200 6th Av. E. (")

2300 7th Av. E. (")

2400 8th Av. E. (")

2500 Broadway E. (")

2600 10th Av. E. (")

2700 11th Av. E. (")

2800 12th Av. E. (")

2900 13th Av. E. (")

3000 14th Av. E. (")

Seaton St.— Extends

from Burrard St.

northwest to C. P. R.

Track, and is a con-

tinuation of Hastings

W. (G) parallels 1

block south.

1000 Burrard (G)

1100 Thurlow (")

1200 Bute (")

Semlin Drive— Extends

from Powell St. south

to 12th Av. E. 17th

east of Westminster.

(G) crosses on Powell.

(RB) crosses on Hast-

ings E. (G&W) on

Keefer stops 1 block

west. (R&W) paral-

lels 3 blocks west.

1 Dundas (G)

100 Triumph (")

200 Pandora (")

300 Albert (G-RB)

400 Hastings E. (RB)

500 Pender E. (")

600 Keefer (G&W)

700 Harris (")

800 Barnard (")

900 Venables (R&W)

1000 Parker (")

1100 Napier (")

1200 William (")

1400 Bismarck (")

1500 Grant (")

1600 Graveley (")

1700 1st Av. E. (")

1800 2nd Av. E. (")

1900 3rd Av. E. (")

2000 4th Av. E. (")

2100 5th Av. E. (")

2200 6th Av. E. (")

2300 7th Av. E. (")

2400 8th Av. E. (")

2500 Broadway E. (")

2600 10th Av. E. (")

2700 11th Av. E. (")

— 12th Av. E. (")

Seymour St.— Extends

from Cordova St. W.

Chestnut St. west to

Cypress St. 11th north

of Broadway W. (G&

southwest to Pacific

St. 1st east of Gran-

ville. (G) crosses on

Hastings W. (G&W-

R-R&W-W-Y) parallel

1 block west.

300 Cordova (G-G&W-

B. C. MILLS, TIMBER & TRADING COMPANY

Vancouver, B. C.

Manufacturers and Dealers in

ALL KINDS OF LUMBER DOORS, WINDOWS, ETC.

Hastings Saw Mill Stanley Avenue.

Royal City Planing Mills Carrall Street.



“HAVE
YOU
READ

THE MAIL?”

Vancouver's Only Independent Paper

Office: 167 Pender St. W
VANCOUVER, B. C.

R-R&W-W-Y)
 400 Hastings W. (")
 500 Pender W. (")
 600 Dunsmuir (G&W-
 R-R-&W-W-Y)
 700 Georgia (")
 800 Robson (")
 900 Smithe (G&W-R-R
 &W-W)
 1000 Nelson (")
 1100 Helmcken (")
 1200 Davie (")
 1300 Drake (G&W-R&W-
 W)
 — Pacific (")

Shore St.—Extends from
 False Creek east to
 Westminster Av. 3rd
 south of Hastings E.
 G&W-R-W-Y) cross on
 Westminster.

100 False Creek. (G&
 W-R-W-Y)
 — Westminster.

Short St.—Extends from
 W) on Short.

1800 Chestnut (G&W)
 — Cypress (")

Smithe St. — Extends
 from Beatty St. north-
 west to Burrard St.
 1st south of Robson.
 G&W-R-R&W-W) cross
 on Granville.

100 Beatty (G&W-R-R
 &W-W)

200 Cambie (")
 300 Hamilton (")
 400 Homer (")
 500 Richards (")
 600 Seymour (")
 700 Granville (")
 800 Howe (")
 900 Hornby ("

— Burrard (")

Sophia St. — Extends
 from Broadway E.
 south to City Bound-
 ary. 1st east of West-
 minster S. (R) crosses
 on Broadway E. (W)
 on Broadway E. to 1
 block west. (Y) par-
 allels 1 block west.

2500 Broadway E. (R-
 W-Y)

2600 10th Av. E. (")
 2700 11th Av. E. (")
 2800 12th Av. E. (Y)
 2900 13th Av. E. (")
 3000 14th Av. E. (")
 3100 15th Av. E. ("

— 16th Av. E. (")

Spruce St. — Extends
 from False Creek
 south to 15th Av. W.
 4th east of Granville
 S. (W) crosses on
 Broadway W.

2200 6th Av. W. (W)

2300 7th Av. W. (")

2400 8th Av. W. (")

2500 Broadway W. (")

2600 10th Av. W. (")

2700 11th Av. W. (")

2800 12th Av. W. (")

2900 13th Av. W. (")

3000 14th Av. W. ("

— 15th Av. W. (")

St. Catherines — Extends
 from False Creek
 south to City Bound-
 ary. 10th east of
 Westminster S. (R)
 on Broadway to 2
 blocks west.

2200 6th Av. E. (R)

2300 7th Av. E. (")

2400 8th Av. E. (")

2500 Broadway E. (")

2600 10th Av. E. (")

2700 11th Av. E. (")

2800 12th Av. E. (")

2900 13th Av. E. (")

3000 14th Av. E. (")

Stephens St. — Extends
 from Pt. Gray Road
 south to 16th Av. W.
 12th west of Granville
 S. (R&W) crosses on
 4th Av. W.

1500 Pt. Gray (R&W)

1600 York (")

1700 1st Av. W. (")

1800 2nd Av. W. (")

1900 3rd Av. W. (")

2000 4th Av. W. (")

2100 5th Av. W. (")

2200 6th Av. W. (")

2300 7th Av. W. (")

2400 8th Av. W. (")

2500 Broadway W. (")

2600 10th Av. W. (")

2700 11th Av. W. (")

2800 12th Av. W. (")

2900 13th Av. W. (")

3000 14th Av. W. (")

3100 15th Av. W. (")

3200 16th Av. W. (")

Stewart St. — Extends
 from Salsbury Drive
 east to Victoria Drive.
 6th north of Hastings
 E. (G) parallels 2
 blocks south.

1800 Salsbury (G)

PACIFIC COAST EMPLOYMENT AGENCY

LABOR CONTRACTORS

Loggers, Miners, Railroad and Tradesmen
or Help of Every Description Supplied
Entirely Free of Charge to Employers.

Phone 5744.

101 POWELL STREET. VANCOUVER, B. C.

A. G. Brown & Co.

Dealer in

Farm Implements	Road Making Machinery
Contractors' Equipment	Wagons and Carriages

1048 Westminster Ave. VANCOUVER, B. C.

The Western Fish and Poultry Store

“The Store of Quality”

Importers and Dealers.

FISH, POULTRY AND GAME, LOBSTERS,
CRABS AND OYSTERS.

736 PENDER ST., Corner Pender and Howe Sts.
Phone 3837. VANCOUVER, B.C.

— Victoria (")
St. George St.—Extends from False Creek south to Westminster Road. 6th east of Westminster S. (R) crosses on Broadway E. (W) on Broadway E. to 6 blocks west. (Y) parallels 6 blocks west.
 2100 5th Av. E. (R-W-Y)
 2200 6th Av. E. (")
 2300 7th Av. E. (")
 2400 8th Av. E. (")
 2500 Broadway E. (R)
 2600 10th Av. E. (")
 2700 11th Av. E. (")
 2800 12th Av. E. (R-Y)
 2900 13th Av. E. (")
 — Westminster Road (")

Templeton Drive — Extends from Eaton St. south to 14th Av. E. 19th east of Westminster. (G) parallels Templeton Drive N. from 1 to 299. (RB) crosses Templeton Drive S. on Hastings E. (G&W) on Keefer stops 3 blocks west. (R&W) parallels 5 blocks west, from 903 to 3000.

Templeton Drive N.

1 Dundas (G)
 100 Oxford (")
 200 Cambridge (")
 — Eaton (")

Templeton Drive S.

1 Dundas (G)
 100 Triumph (")
 200 Pandora (")
 300 Albert (G-RB)
 400 Hastings E. (RB)
 500 Pender E. (")
 600 Keefer (G&W)
 700 Harris (")
 800 Barnard (")
 900 Venables (R&W)
 1000 Parker (")
 1100 Napier (")
 1200 William (")
 1300 Charles (")
 1400 Bismarck (")
 1500 Grant (")
 1700 1st Av. E. (")
 1800 2nd Av. E. (")
 1900 3rd Av. E. (")
 2000 4th Av. E. (")
 2100 5th Av. E. (")
 — 6th Av. E. (")

2500 Broadway E. (")
 2600 10th Av. E. (")
 2700 11th Av. E. (")
 2800 12th Av. E. (")
 2900 13th Av. E. (")
 — 14th Av. E. (")

Thurlow St.—Extends from Burrard Inlet southwest to False Creek. 4th west of Granville. (G) crosses on Pender W. (R-Y) cross on Robson and Davie.

300 Burrard Inlet (G)
 — Seaton (")
 500 Pender W. (")
 — Eveleigh (")
 600 Lane (")
 — Melville (")
 700 Georgia (R-Y)
 — Alberni (")
 800 Robson (")
 — Haro (")
 900 Lane (")
 — Barclay (")
 1000 Nelson (")
 — Comox (")
 1100 Lane (")
 — Pendrill (")
 1200 Davie (")
 — Burnaby (")
 1300 Lane (")
 — Harwood (")
 1400 Pacific (")
 — Beach (")

Trafalgar Rd.—Extends from English Bay south to 16th Av. W. 11th west of Granville S. (G&W) crosses at English Bay. (R&W) Crosses on 4th Av. W.

1400 Pt. Gray (G&W)
 1500 Cornwall (")
 1600 York (")
 1700 1st Av. W. (R&W)
 1800 2nd Av. W. (")
 1900 3rd Av. W. (")
 2000 4th Av. W. (")
 2100 5th Av. W. (")
 2200 6th Av. W. (")
 2300 7th Av. W. (")
 2400 8th Av. W. (")
 2500 Broadway W. (")
 2600 10th Av. W. (")
 2700 11th Av. W. (")
 2800 12th Av. W. (")
 2900 13th Av. W. (")
 3000 14th Av. W. (")
 3100 15th Av. W. (")
 3200 16th Av. W. (")

Trinity St. — Extends from Powell St. east to City Boundary. 9th

R. HOFFMEISTER

Electrical Engineer & Contractor

Manufacturing, Installation and Repairing
—of all kinds of Electrical Machinery—
Telephone 455

1271 Granville Street

Vancouver, B. C.

Vulcan Iron Works

J. McLAREN, Proprietor.

ENGINEERS AND MACHINISTS

Manufacturers of

MARINE AND SAWMILL MACHINERY

Sole Manufacturer of the J. R. W.
Law Carriage Set Works.

140 Alexander St. PHONE
5664

VANCOUVER, B. C.

Typewriting Bureau

MISS MANSFIELD

A Staff of Experts for all
Classes of Stenographic Work.
Legal work a Specialty : :

Head Office: 633 Hastings St., Phone 2256.

Branch Office: 719 Pender St., Phone L1649.

Phone 159

Night Bell

Cedar Cottage Pharmacy

Endeavors to give Satisfaction to All.
Prescriptions Carefully Dispensed.

STATIONERY, CAMERAS AND SUPPLIES,
PURE DRUGS, DRUG SUNDRIES.

Try our lending library

G. S. METCALFE Prop.

north of Hastings E.
(G) crosses on Powell.

2200 Powell (G)
2300 Garden (")

Triumph St. — Extends
from Salsbury Drive
east to City Boundary.
3rd north of Hastings
E. (G) parallels 1
block north, from 1830
to 2000.

1800 Salsbury (G)

1900 Victoria (")

2000 Semlin (")

2100 Lakewood (")

2200 Templeton (")

2300 Garden (")

Trutch St. — Extends
from 1st Av. W. south
to 16th Av. W. 18th
west of Granville S.
(R&W) crosses on 4th
Av. W.

1700 1st Av. W. (R&W)

1800 2nd Av. W. (")

1900 3rd Av. W. (")

2000 4th Av. W. (")

2100 5th Av. W. (")

2200 6th Av. W. (")

2300 7th Av. W. (")

2400 8th Av. W. (")

2500 Broadway W. (")

2600 10th Av. W. (")

2700 11th Av. W. (")

2800 12th Av. W. (")

2900 13th Av. W. (")

3000 14th Av. W. (")

3100 15th Av. W. (")

3200 16th Av. W. (")

Turner St. — Extends
from Victoria Drive
east to City Boundary.
3rd south of Hastings
E. (G&W) on Keefer
to Victoria only. (RB)
parallels 3 blocks
north.

1900 Victoria (G&W)

200 Semlin (")

2100 Lakewood (")

2200 Templeton (RB)

2300 Garden (")

Venables St. — Extends
from Campbell Av.
east to City Boundary.
5th south of Hastings
E. (R&W) on Venables
from 900 to 1700.

900 Campbell (R&W)

1000 Raymur (")

1100 Boundary (")

1200 Vernon (")

1300 Clark (")

1400 Odium (")

— McLean (")

1500 Woodland (")

1600 Cotton (")

1700 Park (")

1800 Salsbury (")

1900 Victoria (")

2000 Semlin (")

2100 Lakewood (")

22000 Templeton (")

2300 Garden (")

Vernon Drive — Extends
from C. P. R. Tracks
south to False Creek,
11th east of Westmin-
ster. (G) crosses on
Powell, (RB) crosses
on Hastings E. (G&W)
crosses on Harris. (R&
W) crosses on Ven-
ables.

100 C.P.R. Tracks (G)

200 Powell (")

300 Albert (")

— Cordova E. (G-R
B)

400 Hastings E. (RB)

500 Pender (RB-G&W)

600 Keefer (G&W)

800 Barnard (R&W-G&
W)

900 Venables (R&W)

1000 Parker (")

1100 Napier (")

1200 William (")

1300 Chales (")

Victoria Drive — Extends
from Burrard Inlet
south to City Bound-
ary. 16th east of
Westminster. (G)
Crosses on Powell, (RB)
crosses on Hastings E.
(G&W) crosses on
Keefer. (R&W) paral-
lels 2 blocks west from
900 to 1700, 1 block
west from 1800 to 3000

Victoria Drive N.

1 Dundas (G)

100 Wilson (")

— Stewart (")

Victoria Drive S.

1 Dundas (G)

100 Triumph (")

200 Pandora (")

300 Albert (G-RB)

400 Hastings E. (RB)

500 Pender E. (")

600 Keefer (G&W)

700 Harris (")

800 Barnard (")

900 Venables (R&W)

COOK, HEAT and LIGHT
WITH
G A S

For Information and Prices
 ———— SEE ————

Vancouver Gas Co., Ltd.

435 Carrall St.

779 Granville St.

Phone 5000

FOR

Maps, Blue Prints, Guide Books
Printing, Bookbinding
Stationery and Office Furniture

Rubber Stamps,
Souvenir Goods

GO TO THE

GASKELL, ODLUM & STABLER STORES

Address: Thomson Stationery Co., Limited

325 Hastings Street

Gaskell, Odlum & Stabler, Ltd.

683, 685 Granville Street

- 1000 Parker (")
- 1100 Napier (")
- 1200 William (")
- 1300 Charles (")
- 1400 Bismarck (")
- 1500 Grant (")
- 1600 Graveley (")
- 1700 1st Ave. E. (")
- 1800 2nd Av. E. (")
- 1900 3rd Av. E. (")
- 2000 4th Av. E. (")
- 2100 5th Av. E. (")
- 2200 6th Av. E. (")
- 2300 7th Av. E. (")
- 2400 8th Av. E. (")
- 2500 Broadway E. (")
- 2600 10th Av. E. (")
- 2700 11th Av. E. (")
- 2800 12th Av. E. (")
- 2900 13th Av. E. (")
- 3000 14th Av. E. (")
- 15th Av. E. (")

Victoria St. West—South side. Name changed to Point Gray Road, which sec.

Victoria St.— Extends from 5th Ave. E., south to Westminster Road. 5th east of Westminster S. (R) crosses on Broadway E. (W) on Broadway E., to 5 blocks west. (Y) parallels 5 blocks west.

- 2100 5th Av. E. (R-Y)
- 2200 6th Av. E. (")
- 2300 7th Av. E. (")
- 2400 8th Av. E. (R-W-Y)
- 2500 Broadway E. (")
- 2600 10th Av. E. (")
- 2700 11th Av. E. (")
- 2800 12th Av. E. (R-Y)
- Westminster Rd (")

Vine St.—Extends from Cornwall St. South to 10th Av. 8th west of Granville St. (G&W) crosses at English Bay. (R&W) crosses on 4th Ave. W.

- 1500 Cornwall (G&W)
- 1600 York (")
- 1700 1st Ave. W. (R&W)
- 1800 2nd Av. W. (")
- 1900 3rd Av. W. (")
- 2000 4th Av. W. (")
- 2100 5th Av. W. (")
- 2200 6th Av. W. (")
- 2300 7th Av. W. (")
- 2400 8th Av. W. (")
- 2500 Broadway W. (")
- 10th Av. W. (")

Walnut St. — Extends from Creelman Av.

south to Cornwall St. between Cypress & Maple Sts. (G&W) cross.

- 1300 Creelman (G&W)
- Cornwall (")

Water St—Extends from Carrall St. north-west to Cordova St. W. 2nd north of Hastings (G-Y) parallel 1 block south.

- 1 Carrall (G-Y)
- 100 Abbott (")
- 200 Cambie (")
- Rirchards (")

Waterloo Road—Extends from English Bay, south to 16th Av. W. 20th west of Granville S. (R&W) crossess on 4th Av. W.

- 1600 Pt. Gray (R&W)
- 1700 1st Av. W. (")
- 1800 2nd Av. W. (")
- 1900 3rd Av. W. (")
- 2000 4th Av. W. (")
- 2100 5th Av. W. (")
- 2200 6th Av. W. (")
- 2300 7th Av. W. (")
- 2400 8th Av. W. (")
- 2500 Broadway W. (")
- 2600 10th Av. W. (")
- 2700 11th Av. W. (")
- 2800 12th Av. W. (")
- 2900 13th Av. W. (")
- 3000 14th Av. W. (")
- 3100 15th Av. W. (")
- 3200 16th Av. W. (")

Westminster Av. — Extends from Alexander St. south to False Creek, thence south to City Boundary. (G) crosses on Powell, (R-B-R & W-) cross on Hastings E. (G&W) on Westminster to 700 (R&W) to 2500. (Y) to 3100.

- 100 Alexander (G-Y)
- 200 Powell (")
- 300 Cordova (G-G&W-R RB-R&W-W-Y)
- 400 Hastings E. (G&W-R-RB-R&W-W)
- 500 Pender E. (")
- 600 Keefer (G&W-R-W-Y)
- 700 Harris (")
- 800 Barnard (")
- 900 Prior (R-W-Y)
- False Creek (")
- 1700 Front (")
- 1800 Dufferin (")
- 1900 Lorne (")

C. E. Shover & Co.

Dealers in

BUILDING MATERIALS

Office and Wharf: 959 Westminster Avenue.
Phone 1365. VANCOUVER B. C.

Telephone Connection. 1725 Park Drive.
(Near Second Ave.)

MADAM J. W. BERESFORD

(Formerly With Miss E. Hoyer,
Fifth Avenue, New York.)

FRENCH MILLINERY AND MODISTE
DE CHAPEAU FRANCAISE.

B. C. Drafting & Blue-Printing Co.

Latest Timber, Mineral and Subdivision Maps.
Every Description of Drafting Work
Executed. Timber and Mineral Maps
Filed for Clients' Reference. : : :

Phone 2769. Cor. Granville and Hastings Streets.
14 Williams Building. VANCOUVER, B. C.

J. A. DOUGLAS. Phone 4346.

DOUGLAS & CO.

Skylights, Cornice Work, Roofing, Eavetroughing
and Furnace Work a Specialty.

2208 Westminster Ave.. Cor. 6th Ave.

Room 224, Winch Building. Phone 5800.

H. ARTHUR

REAL ESTATE BROKER.

CHINESE OWNED PROPERTY A SPECIALTY.

2000 Lansdowne ("")
 2100 5th Av. ("")
 2200 6th Av. ("")
 2300 7th Av. ("")
 2400 8th Av. ("")
 2500 Broadway E. ("")
 2600 10th Ave. E. ("")
 2700 11th Av. E. (Y)
 2800 12th Av. E. ("")
 2900 13th Av. E. ("")
 3000 14th Av. E. ("")
 3100 15th Av. E. ("")
 — 16th Av. E. ("")

Westminster Road—Extends from intersection of Westminster Av. & 7th Av. E. southeast to City Boundary (R) crosses on Broadway E. (W) on Broadway E. to 1 block west.

2300 7th Av. E. (R-W-Y)
 2400 8th Av. E. ("")
 2500 Broadway E. ("")
 2600 10th Av. E. (R-W)
 2700 11th Av. E. ("")
 2800 12th Av. E. ("")
 2900 13th Av. E. ("")
 3000 14th Av. E. ("")
 — 15th Av. E. ("")

Whyte Av. — Extends from Chestnut St. west to Arbutus St. 13th north of Broadway W. (G&W) parallels 2 blocks south.

1800 Chestnut (G&W)
 1900 Cypress ("")
 2000 Maple ("")
 — Arbutus ("")

William St. — Extends from Boundary St. east to Garden Drive. 8th south of Hastings E. (R&W) parallels 3 blocks north from 1100 to 1700 & crosses on Park.

1100 Boundary (R&W)
 — George ("")
 1200 Vernon ("")
 1300 Clark ("")
 1400 Odium ("")
 — McLean ("")
 1500 Woodland ("")
 1600 Cotton ("")
 1700 Park ("")
 1800 Salsbury ("")
 1900 Victoria ("")
 — Lily ("")
 2000 Semlin ("")
 — Rose ("")
 2100 Lakewood ("")

2200 Templeton ("")
 — Garden ("")

Willow St. — Extends from False Creek south to 16th Av. W. 10th west of Westminster S. (W) crosses on Broadway W.

2200 6th Av. W. (W)
 2300 7th Av. W. ("")
 2400 8th Av. W. ("")
 2500 Broadway W. ("")
 2600 10th Av. W. ("")
 — 11th Av. W. ("")
 2800 12th Av. W. ("")
 2900 13th Av. W. ("")
 3000 14th Av. W. ("")
 3100 15th Av. W. ("")
 — 16th Av. W. ("")

Wilson St.—Extends from half block west of Park Drv. easterly to Burrard Inlet. 5th north of Hastings E. (G) parallels 1 block south.

1700 Park (G)
 1800 Salsbury ("")
 1900 Victoria ("")

Woodland Drive — Extends from C. P. R. Tracks south to City Boundary. 13th east of Westminster. (G) crosses on Powell (RB) crosses on Hastings E. (G&W) crosses on Keefer. (R&W) crosses on Venables & parallels 2 blocks east from 900 to 3000.

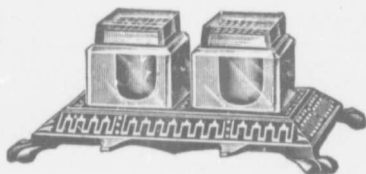
100 C. P. R. Tracks (G)
 200 Powell ("")
 — Pandora ("")
 300 Albert (G-RB)
 400 Hastings E. (RB)
 500 Pender E. ("")
 600 Keefer (G&W)
 700 Harris ("")
 800 Barnard (R&W)
 900 Venables ("")
 1000 Parker ("")
 1100 Napier ("")
 1200 William ("")
 1300 Charles ("")
 1400 Bismarck ("")
 1500 Grant ("")
 1600 Graveley ("")
 1700 1st Av. E. ("")
 1800 2nd Av. E. ("")
 1900 3rd Av. E. ("")
 2000 4th Av. E. ("")
 2100 5th Av. E. ("")

AGENTS FOR
BROWN-MORSE CO. EUGENE DIETZGEN & CO.

Office Filing Devices
Card Index & Vertical Files

Mathematical Instruments and
Draughtsmer's Materials

TELEPHONE 1632



WHITE & BINDON LTD.

STATIONERS & PRINTERS

113 Hastings St. W.

VANCOUVER, B. C.

T. F. McDOWELL

successor to

McDowell & Kinnis

POULTRY SPECIALIST & GROCER

Phones: 4330-4231

704 Granville St.

F. A. Greene

Telephone 340

G. R. Simpson

GREENE & SIMPSON

FUNERAL DIRECTORS & EMBALMERS

Private Mortuary and Chapel

305 Pender St. W.

VANCOUVER, B. C.

2200 6th Av. E. (")
 2300 7th Av. E. (")
 2400 8th Av. E. (")
 2500 Broadway E. (")
 2600 10th Av. E. (")
 2700 11th Av. E. (")
 2800 12th Av. E. (")
 2900 13th Av. E. (")
 3000 14th Av. E. (")
 — 15th Av. E. (")

Yew St.—Extends from English Bay, south to 16th Av. W. 7th west of Granville S. (G&W) crosses at English Bay (R&W) crosses on 4th Av. west.

1400 English Bay (G&W)
 1500 Cornwall (")
 1600 York (")
 1700 1st Av. W. (R&W)
 1800 2nd Av. W. (")
 1900 3rd Av. W. (")
 2000 4th Av. W. (")
 2100 5th Av. W. (")
 2200 6th Av. W. (")
 2300 7th Av. W. (")
 2400 8th Av. W. (")
 2500 Broadway W. (")
 2600 10th Av. W. (")
 1700 11th Av. W. (")
 2800 12th Av. W. (")
 2900 13th Av. W. (")
 3000 14th Av. W. (")
 3100 15th Av. W. (")
 — 16th Av. W. (")

York St.—Extends from Chestnut St. west to Trafalgar Road. 9th north of Broadway W. (G&W) parallels 2 blocks north.

1800 Chestnut (G&W)
 1900 Cypress (")
 2000 Maple (")
 2100 Arbutus (")
 2200 Yew (")
 2300 Vine (")
 2400 Balsam (")
 2500 Larch (")
 — Trafalgar (")

Yukon St.—Extends from Front St. south to City Boundary. 6th west of Westminster S. (W) crosses on Broadway W.

1900 Front (W)
 2000 Lansdowne (")
 2100 5th Av. W. (")
 2200 6th Av. W. (")
 2300 7th Av. W. (")
 2400 8th Av. W. (")
 2500 Broadway W. (")
 2600 10th Av. W. (")

2700 11th Av. W. (")
 2800 12th Av. W. (")
 2900 13th Av. W. (")
 3000 14th Av. W. (")
 3100 15th Av. W. (")

1st Av. East.—Extends from Clark Drive east to City Boundary. 8th north of Broadway. (R&W) crosses on Park.

1300 Clark (R&W)
 1400 McLean (")
 1500 Woodland (")
 1600 Cotton (")
 1700 Park (")
 1800 Salisbury (")
 1900 Victoria (")
 2000 Semlin (")
 2100 Lakewood (")
 2200 Templeton (")
 2300 Garden (")

1st Av. West.—Extends from False Creek west to City Boundary. 8th north of Broadway W. (R&W) parallels 3 blocks south.

1500 False Creek (R&W)
 1600 Fir (")
 1700 Pine (")
 1800 Cedar (")
 — Chestnut (")
 1900 Cypress (")
 2000 Maple (")
 2100 Arbutus (")
 2200 Yew (")
 2300 Vine (")
 2400 Balsam (")
 2500 Larch (")
 2600 Trafalgar (")
 2700 Stephens (")
 2800 McDonald (")
 3000 Bayswater (")
 3100 Balaclava (")
 3200 Trutch (")
 3300 Blenheim (")
 3400 Waterloo (")
 3500 Collingwood (")
 3600 Dunbar (")
 3700 Alma (")

2nd Av. East.—Extends from Keith Drive east to Garden Drive. 7th north of Broadway. (R&W) crosses on Park.

*1200 Keith (R&W)
 1300 Clark (")
 1400 McLean (")
 1500 Woodland (")
 1600 Cotton (")
 1700 Park (")
 1900 Victoria (")
 2000 Semlin (")

Fowler & Cook

PLUMBING, HEATING AND GAS FITTING.

224 Harris Street.

Phone L2486.

Near Westminster Ave.

VANCOUVER, B. C.

The Bon Ton Steam Dye Works

JOS. SCHILLER, Prop.

Ladies' Suits, Remodelling a Specialty.

Suits Cleaned, Pressed and Repaired.

943 Davie Street.

VANCOUVER, B. C.

N. A. MUNRO

GENERAL BLACKSMITH AND
HORSESHOEING.

TRY OUR WORK.

162 Keefer Street. If not there Phone 5771.

Wo Chong

MERCHANT TAILOR.

First Class Work and Fit Guaranteed. Full Stock
of Fine Woollen Goods on Hand.

30 Hastings St. E.

VANCOUVER, B. C.

If you are looking for Board and Rooms try

MRS. KIRK'S

Rates \$5 and \$6 a week. Home Cooking.

533 Seymour Street.

VANCOUVER, B. C.

2100 Lakewood ("")
 2200 Templeton ("")
 — Garden ("")

2nd Av. West.—Extends from Granville St. west to City Boundary. 7th north of Broadway W. (W) crosses on Granville. (R&W) parallels 2 blocks south.

1500 Granville (R&W-W)
 1600 Fir ("")
 1700 Pine ("")
 1800 Cedar (R&W)
 1900 Cypress ("")
 2000 Maple ("")
 2100 Arbutus ("")
 2200 Yew ("")
 2300 Vine ("")
 2400 Balsam ("")
 2500 Larch ("")
 2600 Trafalgar ("")
 2700 Stephens ("")
 — McDonald ("")
 3100 Balaclava ("")
 3200 Trutch ("")
 3300 Blenheim ("")
 3400 Waterloo ("")
 3500 Collingwood ("")
 3600 Dunbar ("")
 3700 Alma ("")

3rd Av. East.—Extends from Clark Drive east to City Boundary. 6th north of Broadway. (R&W) crosses on Park.

1300 Clark (R&W)
 1400 McLean ("")
 1500 Woodland ("")
 1600 Cotton ("")
 1700 Park ("")
 1900 Victoria ("")
 2000 Semlin ("")
 2100 Lakewood ("")
 2200 Templeton ("")
 2300 Garden ("")

3rd Av. West.—Extends from Granville St. west to City Boundary. 6th north of Broadway W. (R&W-W) cross on Granville. (R&W) parallels 1 block south.

1500 Granville (R&W-W)
 1600 Fir ("")
 1700 Pine ("")
 1800 Cedar (R&W)
 1900 Cypress ("")
 2000 Maple ("")
 2100 Arbutus ("")
 2200 Yew ("")
 2300 Vine ("")

2400 Balsam ("")
 2500 Larch ("")
 2600 Trafalgar ("")
 2700 Stephens ("")
 2800 MacDonald ("")
 3000 Bayswater ("")
 3100 Balaclava ("")
 3200 Trutch ("")
 3300 Blenheim ("")
 3400 Waterloo ("")
 3500 Collingwood ("")
 3600 Dunbar ("")
 3700 Alma ("")

4th Av. East.—Extends from Clark Drive east to City Boundary. 5th north of Broadway E. (R&W) crosses on Park.

1300 Clark (R&W)
 1400 McLean ("")
 1500 Woodland ("")
 1700 Park ("")
 1900 Victoria ("")
 2000 Semlin ("")
 2100 Lakewood ("")
 2200 Templeton ("")
 2300 Garden ("")

4th Av. West.—Extends from half block east of Granville St. west to City Boundary 5th north of Broadway W. (W) crosses on Granville. (R&W) on 4th Av.

1400 ——— (R&W-W)
 1500 Granville ("")
 1600 Fir ("")
 1700 Pine (R&W)
 1800 Cedar ("")
 1900 Cypress ("")
 2000 Maple ("")
 2100 Arbutus ("")
 2200 Yew ("")
 2300 Vine ("")
 2400 Balsam ("")
 2500 Larch ("")
 2600 Trafalgar ("")
 2700 Stephens ("")
 2800 McDonald ("")
 3000 Bayswater ("")
 3100 Balaclava ("")
 3200 Trutch ("")
 3300 Blenheim ("")
 3400 Waterloo ("")
 3500 Collingwood ("")
 3600 Dunbar ("")
 3700 Alma ("")

5th Av. East.—Extends from Ontario St. east to City Boundary. 4th

IDEAL GROCERY

LIMITED

High Class Groceries
Provisions and Fruits

428 GRANVILLE STREET

P O. Box 383

Phones ³⁴⁴
4571

P. O. Box 1431

B. A. EARDLEY

COMPANY

REAL ESTATE, INSURANCE
AND FINANCIAL BROKERS,
TIMBER LANDS, MINES,
INVESTMENTS.

413 GRANVILLE STREET

VANCOUVER, B. C.

north of Broadway E. (R-W-Y) cross on Westminster. (R&W) cross on Park.

- 1 Ontario (R-W-Y)
- 100 Quebec (")
- 200 Westminster (")
- 300 Scotia (")
- Brunswick (")
- 400 Prince Edward (")
- Victoria St. (")
- 500 St. George (")
- 600 Carolina (")
- 1100 Glen (R&W)
- 1200 Keith (")
- 1300 Clark (")
- 1400 McLean (")
- 1500 Woodland (")
- Park (")
- 1900 Victoria (")
- 2000 Semlin (")
- 2100 Lakewood (")
- 2200 Templeton (")
- 2300 Garden (")

5th Av. West.—Extends from Ontario St. west to City Boundary. 4th north of Broadway W. (W) crosses on Granville & parallels 4 blocks south from 1 to 1500 only. (R&W) parallels 1 block north from 1500 to 3700.

- 1 Ontario (W)
- 100 Manitoba (")
- 200 Columbia S. (")
- 300 Alberta (")
- 400 Yukon (")
- Bridge (")
- 1400 Hemlock (R&W-W)
- 1500 Granville (")
- 1600 Fir (")
- 1700 Pine (R&W)
- 1800 Cedar (")
- 1900 Cypress (")
- 2000 Maple (")
- 2100 Arbutus (")
- 2200 Yew (")
- 2300 Vine (")
- 2400 Balsam (")
- 2500 Larch (")
- 2600 Trafalgar (")
- 2700 Stephens (")
- 2800 McDonald (")
- Bayswater (")
- 3100 Balaclava (")
- 3200 Trutch (")
- 3300 Blenheim (")
- 3400 Waterloo (")
- 3500 Collingwood (")
- 3600 Dunbar (")
- 3700 Alma (")

6th Av. East.—Extends from Ontario St. east

to City Boundary. 3rd north of Broadway E. (R-W-Y) cross on Westminster. (R&W) crosses on Park. (R) parallels 3 blocks south from 1 to 700.

- 1 Ontario (R-W-Y)
- 100 Quebec (")
- 200 Westminster (")
- 300 Scotia (")
- Brunswick (")
- 400 Prince Edward (")
- Victoria St. (")
- 500 St. George (R)
- 600 Carolina (")
- 700 Scott (")
- 800 Burns (")
- 900 St. Catherines (")
- 1100 Glen (R&W)
- 1200 Keith (")
- 1300 Clark (")
- 1400 McLean (")
- 1500 Woodland (")
- 1700 Park (")
- 1900 Victoria (")
- 2000 Semlin (")
- 2100 Lakewood (")
- 2200 Templeton (")
- 2300 Garden (")

6th Av. West.—Extends from Ontario St. west to City Boundary. 3rd north of Broadway W. (W) crosses on Granville & parallels 3 blocks south from 1 to 1500. (R&W) parallels 2 blocks north from 1500 to 3700.

- 1 Ontario (W)
- 100 Manitoba (")
- 200 Columbia S. (W)
- 300 Alberta (")
- 400 Yukon (")
- 500 Bridge (")
- 600 Ash (")
- 700 Heather (")
- 800 Willow (")
- 900 Laurel (")
- 1000 Oak (")
- 1100 Spruce (")
- 1200 Alder (")
- 1300 Birch (")
- 1400 Hemlock (")
- 1500 Granville (")
- 1600 Fir (")
- 1700 Pine (R&W)
- 1800 Cedar (")
- 1900 Cypress (")
- 2000 Maple (")
- 2100 Arbutus (")
- 2200 Yew (")
- 2300 Vine (")

Phone 5399.

We Sell Everything Electrical.

EDWARD PRICE ELECTRICAL SUPPLIES

House Wiring, Time Switches, Annunciators, House Fittings
Telephones, Incandescent Lamps, Flat Irons

Motors and Gasoline Engine Supplies

949 Park Drive, cor. Parker St., VANCOUVER.

D. R. COWAN

NOTARY PUBLIC.

West End Real Estate Broker.

South Vancouver Lots a Specialty.

1007 Davie Street.

VANCOUVER, B. C.

Phone 835.

S. ALBERT, Prop.

Hotel Iroquois

Elegantly Furnished Rooms. Dining Room in
Connection. Everything New and Up-to-Date.

A SPECIALTY OF GOOD OLD SCOTCH

21-23 Cordova St., W. Vancouver, B.C.

H. A. Urquhart

**Wine and Spirit Merchant
Choice Cigars**

Phone 3896.

Corner Powell Street and Westminster Avenue.

TIMMINS & MITCHELL

THE GROCERS THAT KNOW HOW.

**FANCY AND STAPLE GROCERIES
AND PROVISIONS, ETC.**

Try our Coffee—"The coffee that made the
Carlton famous."

Phone 5621.

Corner Cambie and Cordova.

2400 Balsam (")
 2500 Larch (")
 2600 Trafalgar (")
 2700 Stephens (")
 2800 McDonald (")
 3000 Bayswater (")
 3100 Balaclava (")
 3200 Trutch (")
 3300 Bleinheim (")
 3400 Waterloo (")
 3500 Collingwood (")
 3600 Dunbar (")
 3700 Alma (")

7th Av. East.—Extends from Ontario St. east to Garden Drive. 2nd north of Broadway east. (R-W-Y) cross on Westminster. (R&W) crosses on Park. (R) parallels 2 blocks south from 1 to 700.

1 Ontario (R-W-Y)
 100 Quebec (")
 200 Westminster (")
 300 Scotia (")
 — Brunswick (")
 400 Prince Edward (")
 — Victoria St. (R)
 500 St. George (")
 600 Carolina (")
 700 Scott (")
 800 Burns (")
 900 St. Catharines (")
 1000 Dock (")
 1100 Glen (R&W)
 1200 Keith (")
 1300 Clark (")
 1400 McLean (")
 1500 Woodland (")
 1700 Park (")
 1900 Victoria (")
 2000 Semlin (")
 2100 Lakewood (")
 2200 Templeton (")
 — Garden (")

7th Av. West.—Extends from Ontario St. west to City Boundary. 2nd north of Broadway W. (W) crosses on Granville & parallels 2 blocks south from 1 to 1500. (R&W) parallels 3 blocks north from 1500 to 3700.

1 Ontario (W)
 100 Manitoba (")
 200 Columbia S. (")
 300 Alberta (")
 400 Yukon (")
 500 Bridge (")

600 Ash (")
 700 Heather (")
 800 Willow (")
 900 Laurel (")
 1000 Oak (")
 1100 Spruce (")
 1200 Alder (")
 1300 Birch (")
 1400 Hemlock (")
 1500 Granville (")
 1600 Fir (")
 1700 Pine (R&W)
 1800 Cedar (")
 1900 Cypress (")
 2000 Maple (")
 2100 Arbutus (")
 2200 Yew (")
 2300 Vine (")
 2400 Balsam (")
 2500 Larch (")
 2600 Trafalgar (")
 2700 Stephens (")
 — McDonald (")
 3000 Bayswater (")
 3100 Balaclava (")
 3200 Trutch (")
 3300 Bleinheim (")
 3400 Waterloo (")
 3500 Collingwood (")
 3600 Dunbar (")
 3700 Alma (")

8th Av. East.—Extends from Ontario St. east to Garden Drive. 1st north of Broadway E. (R-W-Y) cross on Westminster. (R&W) crosses on Park. (R) parallels 1 block south from 1 to 700.

1 Ontario (R-W-Y)
 100 Quebec (")
 200 Westminster (")
 — Westminster Road (")
 300 Scotia (")
 — Brunswick (")
 400 Prince Edward (")
 — Victoria St. (R)
 500 St. George (")
 600 Carolina (")
 700 Scott (")
 800 Burns (")
 900 St. Catherines (")
 1000 Dock (")
 1100 Glen (R&W)
 1200 Keith (")
 1300 Clark (")
 1400 McLean (")
 1500 Woodland (")
 1700 Park (")
 1900 Victoria (")

The Granville Stationery Co.

(Successors to Retail Store of the Bailey Bros., Company, Limited)

BOOKSELLERS

STATIONERS

See our line of 25c PINS and BROOCHES.
Largest assortment of Souvenirs and Postcards in
British Columbia

ARTIST MATERIALS AND PICTURE
FRAMING, CAMERAS AND
PHOTOGRAPHIC SUPPLIES.

540 Granville Street

Vancouver, B.C.

S. A. THOMPSON

REAL ESTATE

**AND FINANCIAL
BROKER**

AGENT FOR

MELVILLE TOWNSITE

411 Dominion Trust Building

PHONE 4561.

- 2000 Semlin (“)
- 2100 Lakewood (“)
- 2200 Templeton (“)
- Garden (“)

8th Av. West.—Extends from Ontario St. west to City Boundary. 1st north of Broadway W. (W) crosses on Granville & parallels 1 block south from 1 to 1500. (R&W) parallels 4 blocks north from 1500 to 3700.

- 1 Ontario (W)
 - 100 Manitoba (“)
 - 200 Columbia S. (“)
 - 300 Alberta (“)
 - 400 Yukon (“)
 - 500 Bridge (“)
 - 600 Ash (“)
 - 700 Heather (“)
 - 800 Willow (“)
 - 900 Laural (“)
 - 1000 Oak (“)
 - 1100 Spruce (“)
 - 1200 Alder (“)
 - 1300 Birch (“)
 - 1400 Hemlock (“)
 - 1500 Granville (“)
 - 1600 Fir (“)
 - 1700 Pine (R&W)
 - 1800 Cedar (“)
 - 1900 Cypress (“)
 - 2000 Maple (“)
 - 2100 Arbutus (“)
 - 2200 Yew (“)
 - 2300 Vine (“)
 - 2400 Balsam (“)
 - 2500 Larch (“)
 - 2600 Trafalgar (“)
 - 2700 Stephens (“)
 - 2800 McDonald (“)
 - 3000 Bayswater (“)
 - 3100 Balaclava (“)
 - 3200 Trutch (“)
 - 3300 Bleinheim (“)
 - 3400 Waterloo (“)
 - 3500 Collingwood (“)
 - 3600 Dunbar (“)
 - 3700 Alma (“)
- 10th Av. East.**—Extends from Ontario St. east to Garden Drive. 1st south of Broadway E. (Y) crosses on Westminster. (G&W) cross on Park. (R) parallels 1 block north from 200 to 700.
- 1 Ontario (R-W-Y)
 - 100 Quebec (“)
 - 200 Westminster (“)

- Westminster Road (“)
- 300 Sophia (“)
- 400 Prince Edward (R)
- Victoria St. (“)
- 500 St. George (“)
- 600 Carolina (“)
- 700 Scott (“)
- 800 Burns (“)
- 900 St. Catherines (“)
- 1000 Dock (“)
- 1100 Glen (G&W)
- 1200 Keith (“)
- 1300 Clark (“)
- 1500 Woodland (“)
- 1700 Park (“)
- 1900 Victoria (“)
- 2000 Semlin (“)
- 2100 Lakewood (“)
- 2200 Templeton (“)
- Garden (“)

10th Av. West.—Extends from Ontario St. west to City Boundary. 1st south of Broadway W. (W) parallels 1 block north from 1 to 1500. (R&W) parallels 6 blocks north from 1500 to 3700.

- 1 Ontario (W)
- 100 Manitoba (“)
- 200 Columbia S. (“)
- 300 Alberta (“)
- 400 Yukon (“)
- 500 Bridge (“)
- 600 Ash (“)
- 700 Heather (“)
- 800 Willow (“)
- 900 Laurel (“)
- 1000 Oak (“)
- 1100 Spruce (“)
- 1200 Alder (“)
- 1300 Birch (“)
- 1400 Hemlock (“)
- 1500 Granville (“)
- 1600 Fir (“)
- 1700 Pine (“)
- 1800 Cedar (“)
- 1900 Cypress (“)
- 2000 Maple (“)
- 2100 Arbutus (“)
- 2200 Yew (“)
- 2600 Trafalgar (R&W)
- 2700 Stephens (“)
- 2800 McDonald (“)
- 2900 Mackenzie (“)
- 3000 Carnarvon (“)
- 3100 Balaclava (“)
- 3200 Trutch (“)
- 33000 Blenheim (“)
- 3400 Waterloo (“)

WHEN IN VANCOUVER
STOP AT THE
Hotel Rainier
Cor. Carrall and Cordova Streets

A NEW, modern hostelry, centrally located near trains, ferry service, theatres and business heart of the city. Every room is large and airy, supplied with a quantity of bright, golden sunlight, thoroughly warmed and luxuriously furnished. Unsurpassed accommodation is offered at reasonable rates.

Visit the famous

RAINIER CAFE

Most beautifully decorated and richly furnished cafe in Western Canada. Entirely remodelled this year at an expense of \$20,000. Seats 175 people. Expert white chefs, varied menu and perfect service. Concert orchestra renders a superb programme at dinner and every evening.

In the Rainier Hotel Block, on the
Corner of Carrall and Cordova
Streets.

3500 Collingwood (")
 3600 Dunbar (")
 3700 Alma (")
11th Av. East.—Extends from Ontario St. east to Garden Drive. 2nd south of Broadway E. (Y) crosses on Westminster. (G & W) crosses on Park. (R) parallels 2 blocks north from 200 to 700.
 1 Ontario (Y)
 100 Quebec (")
 200 Westminster (")
 300 Sophia (")
 — Westminister Road (")
 400 Prince Edward (R)
 — Victoria St. (")
 500 St. George (")
 600 Carolina (")
 700 Scott (")
 800 Burns (")
 900 St. Catherines (")
 1000 Dock (")
 1100 Glen (G&W)
 1300 Clark (")
 1500 Woodland (")
 1700 Park (")
 1900 Victoria (")
 2000 Semlin (")
 2100 Lakewood (")
 2200 Templeton (")
 — Garden (")
11th Av. West.—Extends from Ontario St. west to City Boundary. 2nd south of Broadway W. (W) parallels 2 blocks north from 1 to 1500. (R&W) parallels 7 blocks north from 1500 to 3700.
 1 Ontario (W)
 100 Manitoba (")
 200 Columbia S. (")
 300 Alberta (")
 — Yukon (")
 500 Ash (")
 — Heather (")
 1000 Oak (")
 1100 Spruce (")
 1200 Alder (")
 1300 Birch (")
 1400 Hemlock (")
 1500 Granville (")
 1600 Fir (")
 1700 Pine (")
 1800 Cedar (")
 1900 Cypress (")
 2000 Maple (")

2100 Arbutus (R&W)
 2200 Yew (")
 2600 Trafalgar (")
 2700 Stephens (")
 2800 McDonald (")
 2900 Mackenzie (")
 3000 Carnarvon (")
 3100 Balaclava (")
 3200 Trutch (")
 3300 Blenheim (")
 3400 Waterloo (")
 3500 Collingwood (")
 3600 Dunbar (")
 3700 Alma (")
12th Av. East.—Extends from Ontario St. east to City Boundary. 3rd south of Broadway E. (Y) crosses on Westminster. (G & W) crosses on Park. (R) parallels 3 blocks north from 200 to 700.
 1 Ontario (Y)
 100 Quebec (")
 200 Westminster (")
 300 Sophia (")
 — Westminister Road (")
 400 Prince Edward (R)
 — Victoria St. (")
 500 St. George (")
 600 Carolina (")
 700 Scott (")
 800 Burns (")
 900 St. Catherines (")
 1000 Dock (")
 1100 Glen (G&W)
 1300 Clark (")
 1500 Woodland (")
 1700 Park (")
 1900 Victoria (")
 2000 Semlin (")
 2100 Lakewood (")
 2200 Templeton (")
 2300 Garden (")
12th St. West.—Extends from Ontario St. west to the City Boundary. 3rd south of Broadway W. (W) parallels 3 blocks north from 1 to 1500 (R&W) parallels 8 blocks north from 1500 to 3700.
 1 Ontario (W)
 100 Manitoba (")
 200 Columbia S. (")
 300 Alberta (")
 400 Yukon (")
 500 Bridge (")
 600 Ash (")

Club Cafe

Open from 6 a.m. to 8 p.m.
Good Meals and Quick Service

167 CORDOVA ST. W.

Daniel Collins, Prop.

Boxes for Ladies

All White Help

126 Hastings St. West.

Phone 276

RALPH, MORRIS & ELLA

Limited

HARDWARE

EVERYTHING FOR THE KITCHEN
 Manufacturers of Sheet Metal
 Goods of Every Description, Bakers'
 Portable Ovens, German Silver Hotel
 Bars, Gasoline Boat Tanks, Etc. Mill
 Blower Systems.

Sole agents for McClary's Kootenay Ranges, Caloric Gas Ranges
 Sunshine Furnaces, Cleveland and Rambler Bicycles.

Telephone 2718.

2054-2058 Sixth Ave.

Fairview Manufacturing Co.

Sash and Door Manufacturers

Doors Windows, Mouldings, Finishings, Mantels.
 Store and Office Fixtures, Planing, Band
 Sawing, Turning, Detail Work.

VANCOUVER, B. C.

700 Heather (")
 800 Willow (")
 900 Laurel (")
 1000 Oak (")
 11000 Spruce (")
 1200 Alder (")
 1300 Birch (")
 1400 Hemlock (")
 1500 Granville (")
 1600 Fir (")
 1700 Pine (")
 1800 Cedar (")
 1900 Cypress (")
 2000 Maple (R&W)
 2100 Arbutus (")
 2200 Yew (")
 2600 Trafalgar (")
 2700 Stephens (")
 2800 McDonald (")
 2900 Mackenzie (")
 3000 Carnarvon (")
 3100 Balaclava (")
 3200 Trutch (")
 3300 Blenheim (")
 3400 Waterloo (")
 3500 Collingwood (")
 3600 Dunbar (")
 3700 Alma (")

13th Av. East.—Extends from Ontario St. east to Templeton Drive. 4th south of Broadway E. (Y) crosses on Westminster. (G&W) crosses on Park.

1 Ontario (Y)
 100 Quebec (")
 200 Westminster (")
 300 Sophia (")
 — Prince Edward (")
 500 St. George (")
 600 Carolina (")
 700 Scott (")
 800 Burns (")
 900 St. Catherines (")
 1000 Dock (")
 1100 Glen (G&W)
 1300 Clark (")
 1500 Woodland (")
 1700 Park (")
 — Victoria (")
 2100 Lakewood (")
 — Templeton (")

13th Av. West.—Extends from Ontario St. west to City Boundary. 4th south of Broadway W. (W) parallels 4 blocks north from 1 to 1500. (R&W) parallels 9 blocks north from 1500 to 3700.

1 Ontario (W)
 100 Manitoba (")
 200 Columbia S. (")
 300 Alberta (")
 400 Yukon (")
 500 Bridge (")
 600 Ash (")
 700 Heather (")
 800 Willow (")
 900 Laurel (")
 1000 Oak (")
 1100 Spruce (")
 1200 Alder (")
 1300 Birch (")
 1400 Hemlock (")
 1500 Granville (")
 2100 Arbutus (R&W)
 2200 Yew (")
 2600 Trafalgar (")
 2700 Stephens (")
 2800 McDonald (")
 2900 Mackenzie (")
 3000 Carnarvon (")
 3100 Balaclava (")
 3200 Trutch (")
 3300 Blenheim (")
 3400 Waterloo (")
 3500 Collingwood (")
 3600 Dunbar (")
 3700 Alma (")

14th Av. East.—Extends from Ontario St. east to Carden Drive. 5th south of Broadway E. (Y) crosses on Westminster. (G&W) crosses on Park.

1 Ontario (Y)
 100 Quebec (")
 200 Westminster (")
 300 Sophia (")
 — Prince Edward (")
 500 St. George (")
 600 Carolina (")
 700 Scott (")
 800 Burns (")
 900 St. Catherines (")
 — Dock (")
 1100 Glen (G&W)
 1300 Clark (")
 1500 Woodland (")
 1700 Park (")
 — Victoria (")
 — Lakewood (")
 2200 Templeton (")
 — Garden (")

14th Av. West.—Extends from Ontario St. west to City Boundary. 5th south of Broadway W. (W) parallels 5 blocks north from 1 to 1500.

If you are going to build, of course you want the best brick obtainable.

Your neighbor is going to use the Steger System Silica Brick. He knows this brick has been adopted by the U. S. Government.

THERE'S A REASON

Pacific Pressed Brick Co., Ltd.

Suite 113 and 114 Riggs-Selman Building,
Phone 5264. 319 PENDER ST.

Vancouver, British Columbia

**As a medium for Investment, Van-
couver Real Estate has no
equal on earth**

Our judgment is at your service.
Your profits mean our commissions.

A good collection of properties always on hand.

References and bona-fides for clients acting at
a distance.

Yorston & Cochenour

1016 Westminster Ave.
GIVE US A CALL.

VANCOUVER, B. C.
Phone 4824.

- (R&W) parallels 10 blocks north from 1500 to 3700.
 1 Ontario (W)
 100 Manitoba (")
 200 Columbia S. (")
 300 Alberta (")
 400 Yukon (")
 500 Bridge (")
 600 Ash (")
 700 Heather (")
 800 Willow (")
 900 Laurel (")
 1000 Oak (")
 1100 Spruce (")
 1200 Alder (")
 1300 Birch (")
 1400 Hemlock (")
 1500 Granville (")
 2100 Arbutus (")
 2200 Yew (")
 2600 Trafalga (R&W)
 2700 Stephens (")
 2800 McDonald (")
 2900 Mackenzie (")
 3000 Carnarvon (")
 3100 Balaclava (")
 3200 Trutch (")
 3300 Blenheim (")
 3400 Waterloo (")
 3500 Collingwood (")
 3600 Dunbar (")
 3700 Alma (")
15th Av. East.—Extends from Ontario St. east to Prince Edward St., thence from Park Drive east to City Boundary. 6th south of Broadway E. (Y) crosses on Westminster. (G&W) crosses on Park.
 1 Ontario (Y)
 100 Quebec (")
 200 Westminster (")
 300 Sophia (")
 — Prince Edward (")
 1700 Park (G&W)
 1900 Victoria (")
 2100 Lakewood (")
 2300 Garden (")
15th Av. West.—Extends from Ontario St. west to City Boundary. 6th south of Broadway W. (W) parallels 6 blocks north from 1 to 1500. (R&W) parallels 11 blocks north from 1500 to 3700.
 1 Ontario (W)
 100 Manitoba (")
 200 Columbia S. (")

- 300 Alberta (")
 400 Yukon (")
 — Bridge (")
 700 Heather (")
 800 Willow (")
 900 Laurel (")
 1000 Oak (")
 1100 Spruce (")
 1200 Alder (")
 1300 Birch (")
 1400 Hemlock (")
 1500 Granville (")
 2100 Arbutus (")
 2200 Yew (")
 2600 Trafalga (R&W)
 2700 Stephens (")
 2800 McDonald (")
 2900 Mackenzie (")
 3000 Carnarvon (")
 3100 Balaclava (")
 3200 Trutch (")
 3300 Blenheim (")
 3400 Waterloo (")
 3500 Collingwood (")
 3600 Dunbar (")
 3700 Alma (")
16th Av. East.—Extends from Ontario St. east to Prince Edward St. 7th south of Broadway E. (Y) crosses on Westminster.
 1 Ontario (Y)
 100 Quebec (")
 200 Westminster (")
 300 Sophia (")
 — Prince Edward (")
16th Av. West.—Extends from Bridge St. west to City Boundary. 7th south of Broadway W. (W) parallels 7 blocks north from 500 to 1500 (R&W) parallels 12 blocks north from 1500 to 3700.
 500 Bridge (W)
 600 Ash (")
 700 Heather (")
 900 Laurel (")
 2100 Arbutus (")
 2200 Yew (")
 2600 Trafalgar (R&W)
 2700 Stephens (")
 2800 McDonald (")
 2900 Mackenzie (")
 3000 Carnarvon (")
 3100 Balaclava (")
 3200 Trutch (")
 3300 Blenheim (")
 3400 Waterloo (")
 3500 Collingwood (")
 3600 Dunbar (")
 3700 Alma (")

YOU CAN'T BEAT—

GRIMMETT

GRADUATE OPTICIAN

793 GRANVILLE STREET

FOR OPTICAL WORK.

Physicians, Ministers, Teachers and Professional Men of all kinds are on his books. The Best of Work and Prompt Service

He has Fitted the Most Exacting of Patients

PHONES 401 and 2869.

The A. & C. Grocery Company

FRUIT SPECIALISTS

637 GRANVILLE STREET.

CENTER & HANNA

Limited

Funeral Directors and Embalmers

56 Hastings Street W
VANCOUVER, B. C.

Vancouver Oyster & Fish Co.

Wholesale and Retail Dealers in

Fresh Fish, Oysters and Game

PHONE 873.

GRANVILLE STREET.

M. B. COOPER

**Tailor to the
Ladies**

822 GRANVILLE ST.

VANCOUVER, B. C.

Phone 2781. Cor. Georgia and Hamilton Streets.

J. H. ATKINS

Dealer in Fresh Meats and Choice Groceries,
Butter and Eggs. Game and Poultry in Season.

Phone 3418. Suite 2, Fairfield Bldg.

THE VICTOR BROKERAGE AND TRUST CO.

REAL ESTATE, LOANS, INSURANCE.

445 Granville Street. VANCOUVER, B. C.

PRINCESS CAFE

Breakfast - - 7 to 10 a.m.

Lunch - - 11:30 a.m. to 2 p.m.

Dinner - - 5:30 to 7:30 p.m.

Short Orders at All Hours.

BREEN & WHITE, Props.

JAMES J. DONNELAN **ARCHITECT**

Rooms 205-206,
319 Pender Street.

VANCOUVER, B. C.

W. E. BERRY. Phone 4840. J. W. MONROE.

BERRY & MONROE

REAL ESTATE BROKERS.

Conveyancing, Loans Negotiated, Rents Collected.
2607 Westminster Avenue, corner Tenth Avenue.

VANCOUVER, B. C.

NOTHING OVER 15c.

E. P. CHARLTON & CO., Ltd.

339 Hastings St. W.

VANCOUVER.

Souvenir View

Post Cards

6 for 5c.

Souvenir China

15c.

Souvenir Pins

15c.

E. P. CHARLTON & CO., Ltd.

339 Hastings St., W.

VANCOUVER, B. C.

WE OPERATE STORES THROUGHOUT CANADA AND UNITED STATES.

VANCOUVER'S POPULAR STORE.

5c, 10c and 15c STORE.

THE FARADAY
Electrical Co.

**CONSULTING
ELECTRICAL
ENGINEERS**

SEE US FOR LIGHT, HEAT AND POWER

709 Dunsmuir Street

Cor. Granville Street



**Large and Small Tracts
OF TIMBER**

WE HAVE SEEN THEM
COME AND SEE US.

Special attention given to semi-business
properties

216 Winch Building

Vancouver, B.C.

Phone L1996

HAVE YOU?

Heard of

**The Imperial Car,
Ship Building and
Dry Dock Corp.**

If not, let us tell you
through our large thirty-
page Prospectus.

It is the one safe and
largest industrial proposition
in British Columbia, and its
**BONDS ARE GUARANTEED
FOR FIFTEEN YEARS BY
THE MUNICIPALITY IN
WHICH ITS WORKS ARE
LOCATED.**

The Company own 300
acres of land—8 mile and a
half of waterfront. They
will employ 2000 skilled me-
chanics.

Write for prospectus to-
day.

G. A. Barrett & Co.

282 Hastings Street, East
VANCOUVER, B.C.