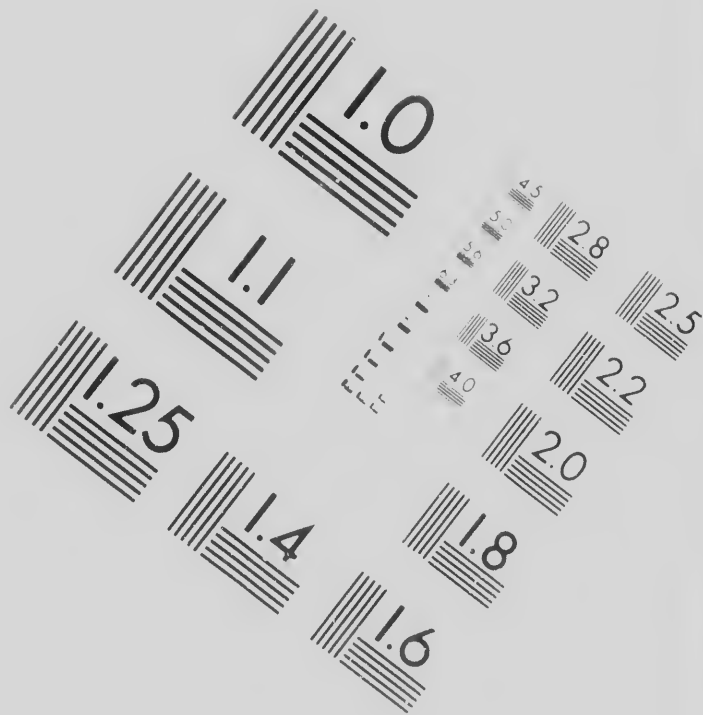


IMAC
TEST



**IMAGE EVALUATION
TEST TARGET (MT-3)**



**CIHM/ICMH
Microfiche
Series.**

**CIHM/ICMH
Collection de
microfiches.**



Technical and Bibliographic Notes/Notes techniques

The Institute has attempted to obtain the best original copy available for filming. Features of this copy which may be bibliographically unique, which may alter any of the images in the reproduction, or which may significantly change the usual method of filming, are checked below.

- | | | |
|--------------------------|---|--------------------------|
| <input type="checkbox"/> | Coloured covers/
Couverture de couleur | <input type="checkbox"/> |
| <input type="checkbox"/> | Covers damaged/
Couverture endommagée | <input type="checkbox"/> |
| <input type="checkbox"/> | Covers restored and/or laminated/
Couverture restaurée et/ou pelliculée | <input type="checkbox"/> |
| <input type="checkbox"/> | Cover title missing/
Le titre de couverture manque | <input type="checkbox"/> |
| <input type="checkbox"/> | Coloured maps/
Cartes géographiques en couleur | <input type="checkbox"/> |
| <input type="checkbox"/> | Coloured ink (i.e. other than blue or black)/
Encre de couleur (i.e. autre que bleue ou noire) | <input type="checkbox"/> |
| <input type="checkbox"/> | Coloured plates and/or illustrations/
Planches et/ou illustrations en couleur | <input type="checkbox"/> |
| <input type="checkbox"/> | Bound with other material/
Relié avec d'autres documents | <input type="checkbox"/> |

L'I
qu
de
po
un
me
so

es techniques et bibliographiques

L'Institut a microfilmé le meilleur exemplaire qu'il lui a été possible de se procurer. Les détails de cet exemplaire qui sont peut-être uniques du point de vue bibliographique, qui peuvent modifier une image reproduite, ou qui peuvent exiger une modification dans la méthode normale de filmage sont indiqués ci-dessous.

- Coloured pages/
Pages de couleur
- Pages damaged/
Pages endommagées
- Pages restored and/or laminated/
Pages restaurées et/ou pelliculées
- Pages discoloured, stained or foxed/
Pages décolorées, tachetées ou piquées
- Pages detached/
Pages détachées
- Showthrough/
Transparence
- Quality of print varies/
Qualité inégale de l'impression
- Includes supplementary material/
Comprend du matériel supplémentaire

The copy filmed here has
to the generosity of:

Library of
Photodupli

The images appearing here
possible considering the c
of the original copy and in
filming contract specificat

Original copies in printed
beginning with the front o
the last page with a printe
sion, or the back cover wh
other original copies are f
first page with a printed o
sion, and ending on the la
or illustrated impression.

Maps, plates, charts, etc.,
different reduction ratios.
entirely included in one ex
beginning in the upper left
right and top to bottom.

has been reproduced thanks

y of Congress
duplication Service

g here are the best quality
the condition and legibility
nd in keeping with the
fications.

ated paper covers are filmed
ont cover and ending on
rinted or illustrated impres-
er when appropriate. All
are filmed beginning on the
ted or illustrated impres-
he last page with a printed
on.

etc., may be filmed at
tios. Those too large to be
ne exposure are filmed
r left hand corner, left to
m. as many frames as

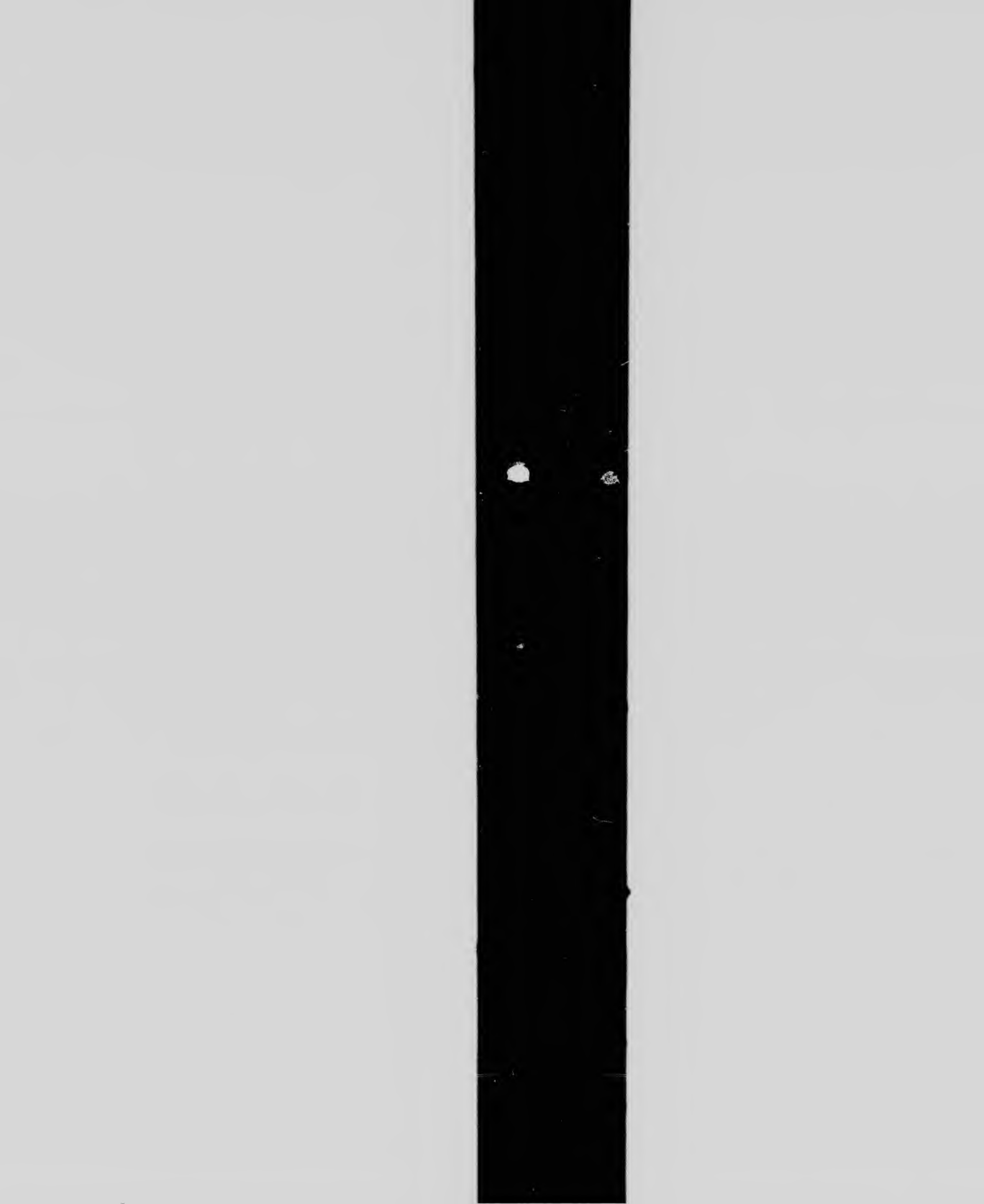
L'exemplaire filmé fut reproduit grâce à la
générosité de:

Library of Congress
Photoduplication Service

Les images suivantes ont été reproduites avec le
plus grand soin, compte tenu de la condition et
de la netteté de l'exemplaire filmé, et en
conformité avec les conditions du contrat de
filmage.

Les exemplaires originaux dont la couverture en
papier est imprimée sont filmés en commençant
par le premier plat et en terminant soit par la
dernière page qui comporte une empreinte
d'impression ou d'illustration, soit par le second
plat, selon le cas. Tous les autres exemplaires
originaux sont filmés en commençant par la
première page qui comporte une empreinte
d'impression ou d'illustration et en terminant par
la dernière page qui comporte une telle
empreinte.

Les cartes, planches, tableaux, etc., peuvent être
filmés à des taux de réduction différents.
Lorsque le document est trop grand pour être
reproduit en un seul cliché, il est filmé à partir
de l'angle supérieur gauche, de gauche à droite



T

a
Pa
to

Ro
the
lands

tende
them

T

uel J
nectio

W

day o
passe
tion o
their

coun
that t

of the
in the

an am
by th

wealth
ning a

ward o
line to

faid w
grees a

The Committee to whom was referred

a Motion of the Delegates of the State of Connecticut, relative to a CESSION of Part of that State's Claim to WESTERN TERRITORY,----beg leave to Report the following Resolution :---

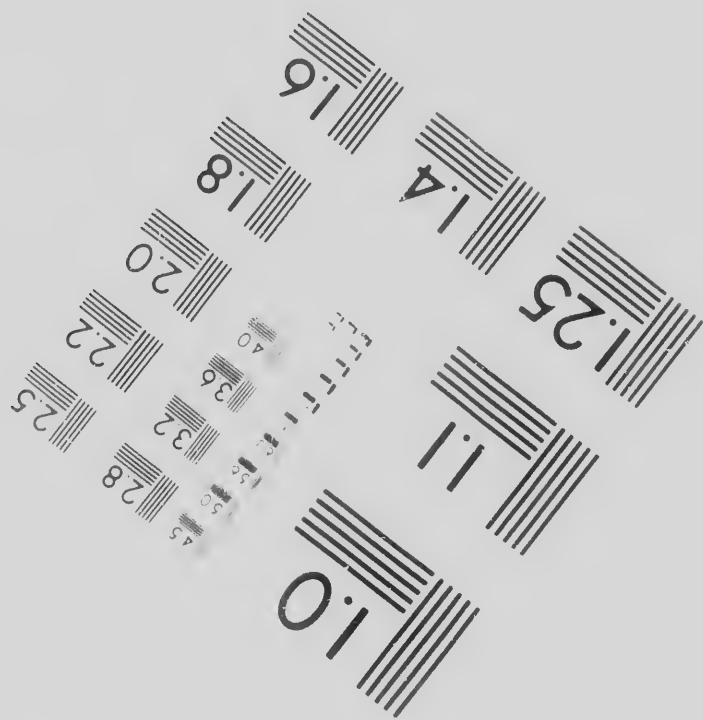
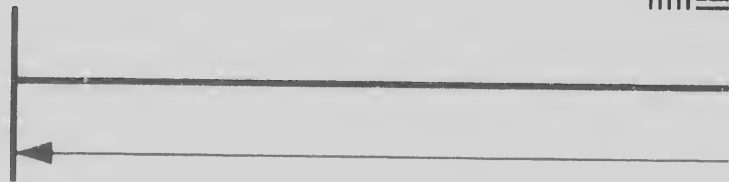
Resolved, That Congress in behalf of the United States, are ready to accept all the right, title, interest and claim of the state of Connecticut, to certain western lands described in the form of a deed of cession, in the following words, to wit,

(here insert)

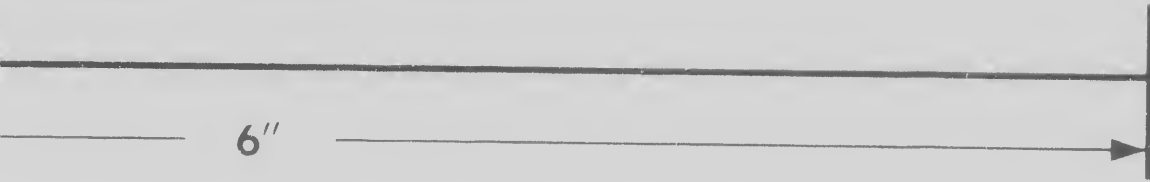
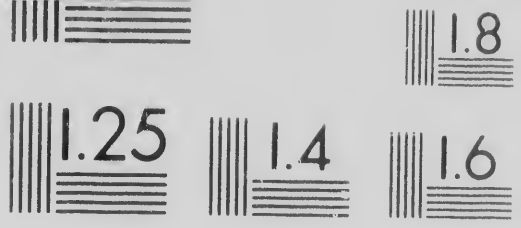
tendered to Congress by the delegates of said state, in pursuance of full powers given them for that purpose, whenever the said delegates shall execute the said deed.

TO ALL WHO SHALL SEE THESE PRESENTS, we William Samuel Johnson and Stephen M. Mitchell, the underwritten delegates for the state of Connecticut, in the Congress of the United States of America, send greeting :

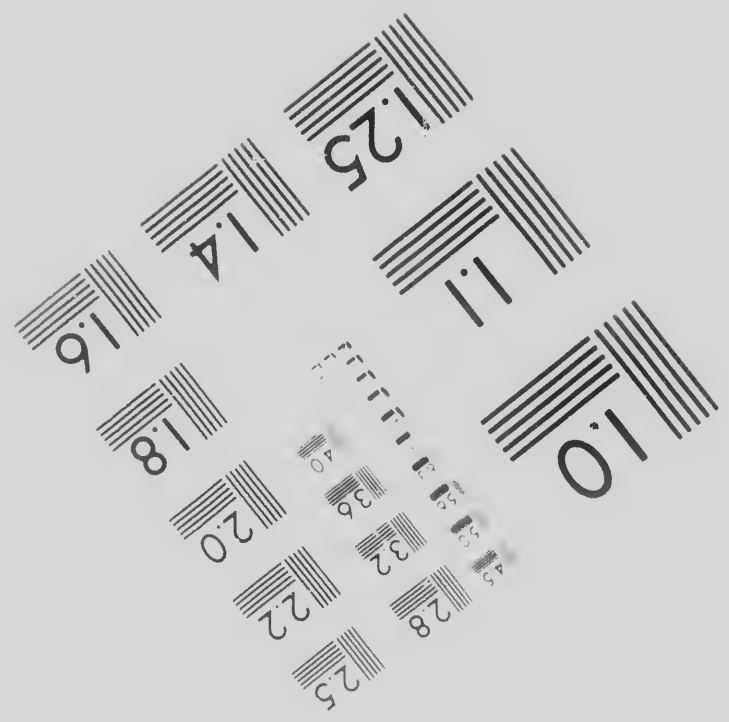
WHEREAS the general assembly of the state of Connecticut, on the second Thursday of October, in the year of our Lord, one thousand seven hundred and eighty-five, passed an act, entitled, " an act empowering the delegates of this state, to make cession of the unlocated lands in the western part of the state, to the United States, for their common benefit" in the words following, viz. " Be it enacted by the governor, Council and representatives in general court assembled, and by the authority of the same, that the delegates of this state, or any two of them who shall be attending the Congress of the United States, be, and they are hereby directed, authorized and fully empowered, in the name and behalf of this state, to make and execute under their hands and seals, an ample deed of release and cession of territory, and land belonging to and claimed by this state, situate and being westward of the western boundary line of the commonwealth of Pennsylvania, as now claimed by said commonwealth; that is to say, beginning at the forty first degree of north latitude, one hundred and twenty miles westward of the afore mentioned western boundary line of Pennsylvania, and from thence a line to be drawn northerly parrallel to, and one hundred and twenty miles westward of said west line of Pennsylvania, and to continue northerly until it comes to forty two degrees and two minutes north latitude. All the lands and territory, with the rights, pri-



Photogr
Scien
Corpor



Canada



ographic
ences
oration

23 WEST MAIN STREET
WEBSTER, N.Y. 14580
(716) 872-4503





Canadian Institute for Historical Microreproductions / Institut canadien de microreproductions historiques

© 1986

toriques

S

Bound with other material/
Relié avec d'autres documents

Tight binding may cause shadows or distortion
along interior margin/
La reliure serrée peut causer de l'ombre ou de la
distorsion le long de la marge intérieure

Blank leaves added during restoration may
appear within the text. Whenever possible, these
have been omitted from filming/
Il se peut que certaines pages blanches ajoutées
lors d'une restauration apparaissent dans le texte,
mais, lorsque cela était possible, ces pages n'ont
pas été filmées.

Additional comments: / CIHM no. 60383
Commentaires supplémentaires.

This item is filmed at the reduction ratio checked below /
Ce document est filmé au taux de réduction indiqué ci-dessous.

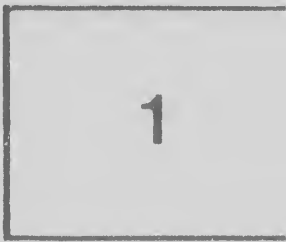
10X				14X				18X					22X
			X										
		12X			16X				20X				

Includes supplementary material/
Comprend du matériel supplémentaire

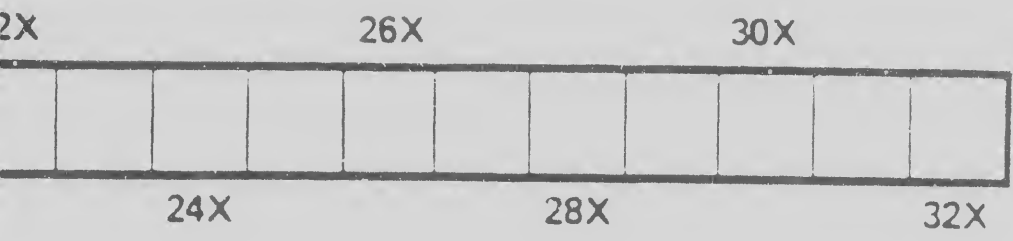
Only edition available/
Seule édition disponible

Pages wholly or partially obscured by errata
slips, tissues, etc., have been refilmed to
ensure the best possible image/
Les pages totalement ou partiellement
obscurcies par un feuillet d'errata, une pelure,
etc., ont été filmées à nouveau de façon à
obtenir la meilleure image possible.

different reduction ratios.
entirely included in one ex
beginning in the upper left
right and top to bottom, a
required. The following di
method:

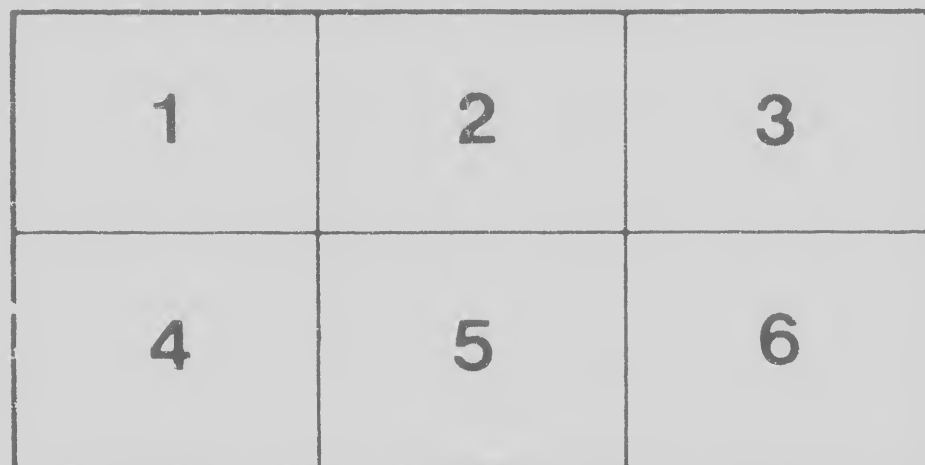
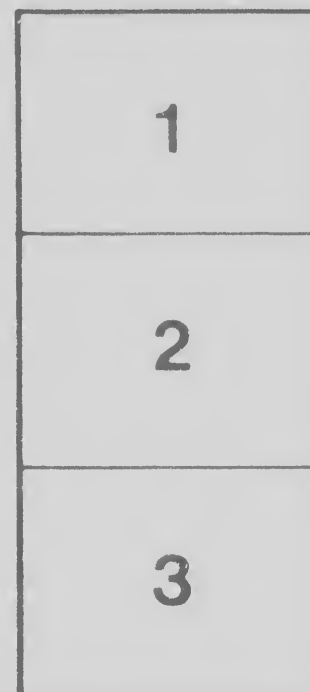
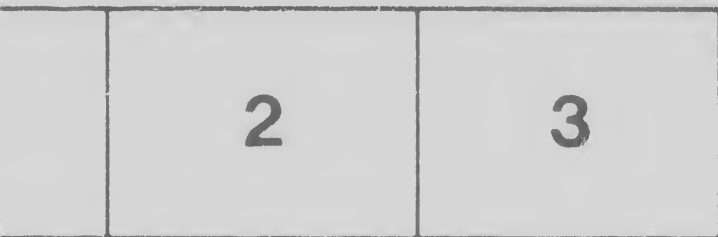


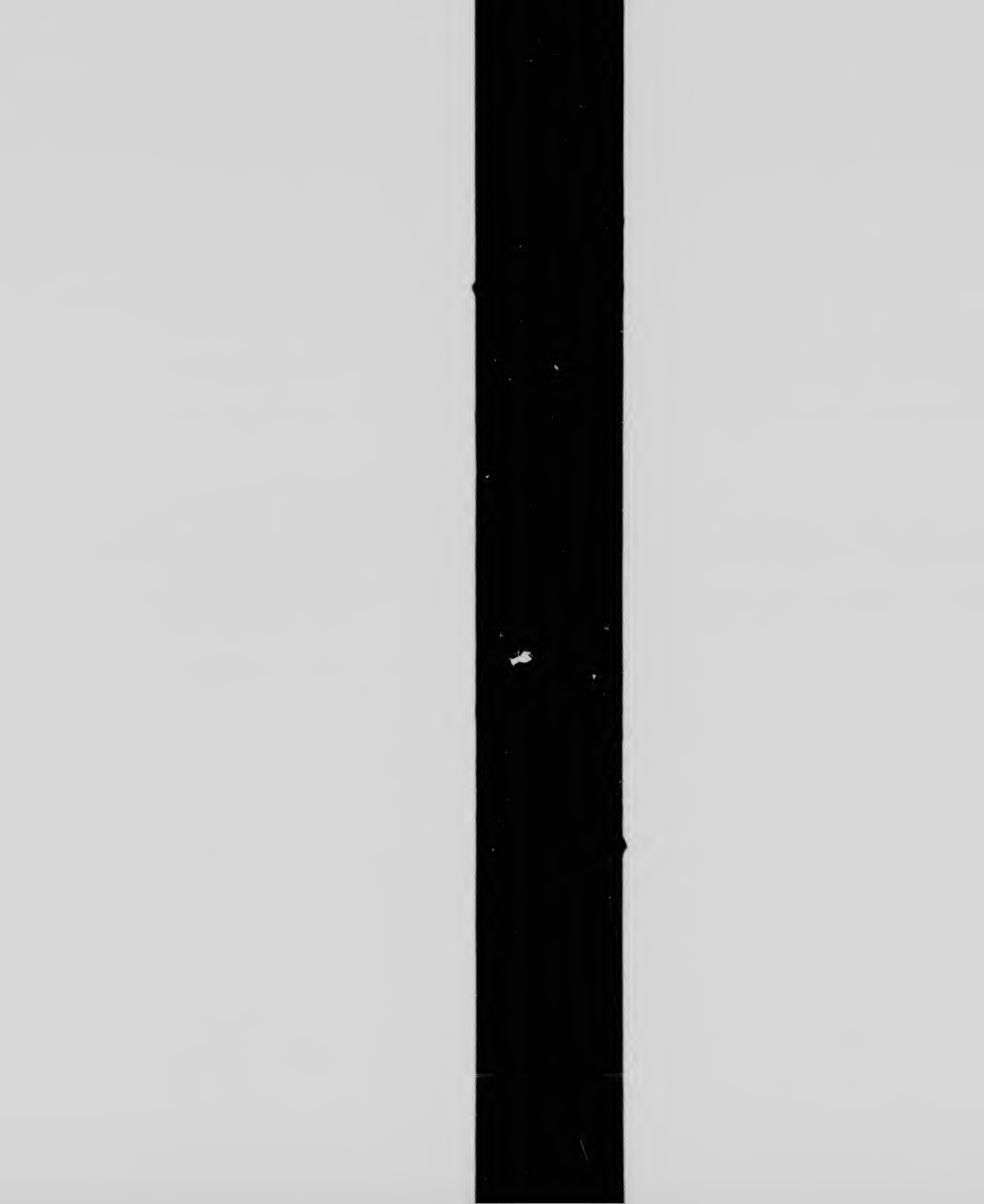
us.



...os. Those too large to be
...e exposure are filmed
...r left hand corner, left to
...m, as many frames as
...g diagrams illustrate the

filmes à des taux de réduction différents.
Lorsque le document est trop grand pour être
reproduit en un seul cliché, il est filmé à partir
de l'angle supérieur gauche, de gauche à droite,
et de haut en bas, en prenant le nombre
d'images nécessaire. Les diagrammes suivants
illustrent la méthode.





one to
said w
grees a
vilege
ed line
United

And
assemb
Thurs
five, v
of Con
said st
vembe
appoin

NO
Stephe
the faic
name a
assign,
benefit
ritory
westwa
latitude
commo
thence
ward o
forty-t
the pov
necticu
rica, fo
lands a
lying a

IN
our seal
sand fe
America

