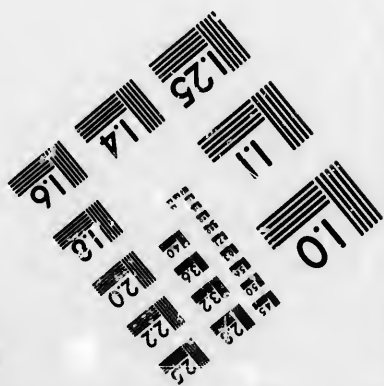
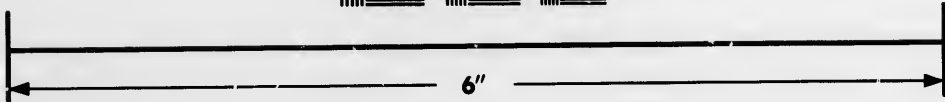
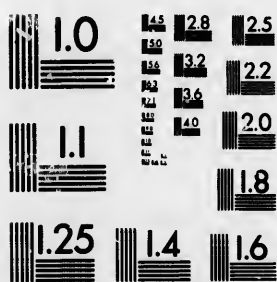


**IMAGE EVALUATION
TEST TARGET (MT-3)**



**Photographic
Sciences
Corporation**

23 WEST MAIN STREET
WEBSTER, N.Y. 14580
(716) 872-4503

13 128
12 125
11 22
10 20
9 18

**CIHM/ICMH
Microfiche
Series.**

**CIHM/ICMH
Collection de
microfiches.**



Canadian Institute for Historical Microreproductions / Institut canadien de microreproductions historiques

11
10
9
8
7
6
5
4
3
2
1

© 1987

Technical and Bibliographic Notes/Notas techniques et bibliographiques

The Institute has attempted to obtain the best original copy available for filming. Features of this copy which may be bibliographically unique, which may alter any of the images in the reproduction, or which may significantly change the usual method of filming, are checked below.

L'Institut a microfilmé le meilleur exemplaire qu'il lui a été possible de se procurer. Les détails de cet exemplaire qui sont peut-être uniques du point de vue bibliographique, qui peuvent modifier une image reproduite, ou qui peuvent exiger une modification dans la méthode normale de filmage sont indiqués ci-dessous.

- Coloured covers/
Couverture de couleur
- Covers damaged/
Couverture endommagée
- Covers restored and/or laminated/
Couverture restaurée et/ou pelliculée
- Cover title missing/
Le titre de couverture manque
- Coloured maps/
Cartes géographiques en couleur
- Coloured ink (i.e. other than blue or black)/
Encre de couleur (i.e. autre que bleue ou noire)
- Coloured plates and/or illustrations/
Planches et/ou illustrations en couleur
- Bound with other material/
Relié avec d'autres documents
- Tight binding may cause shadows or distortion along interior margin/
La reliure serrée peut causer de l'ombre ou de la distorsion le long de la marge intérieure
- Blank leaves added during restoration may appear within the text. Whenever possible, these have been omitted from filming/
Il se peut que certaines pages blanches ajoutées lors d'une restauration apparaissent dans le texte, mais, lorsque cela était possible, ces pages n'ont pas été filmées.
- Additional comments:/
Commentaires supplémentaires:
[Printed ephemera] 1 sheet, [4] p.

- Coloured pages/
Pages de couleur
- Pages damaged/
Pages endommagées
- Pages restored and/or laminated/
Pages restaurées et/ou pelliculées
- Pages discoloured, stained or foxed/
Pages décolorées, tachetées ou piquées
- Pages detached/
Pages détachées
- Showthrough/
Transparence
- Quality of print varies/
Qualité inégale de l'impression
- Includes supplementary material/
Comprend du matériel supplémentaire
- Only edition available/
Seule édition disponible
- Pages wholly or partially obscured by errata slips, tissues, etc., have been refilmed to ensure the best possible image/
Les pages totalement ou partiellement obscurcies par un feuillet d'errata, une pelure, etc., ont été filmées à nouveau de façon à obtenir la meilleure image possible.

This item is filmed at the reduction ratio checked below/
Ce document est filmé au taux de réduction indiqué ci-dessous.

| | | | | | |
|--------------------------|--------------------------|--------------------------|-------------------------------------|--------------------------|--------------------------|
| 10X | 14X | 18X | 22X | 26X | 30X |
| <input type="checkbox"/> | <input type="checkbox"/> | <input type="checkbox"/> | <input checked="" type="checkbox"/> | <input type="checkbox"/> | <input type="checkbox"/> |
| 12X | 16X | 20X | 24X | 28X | 32X |

The copy filmed here has been reproduced thanks to the generosity of:

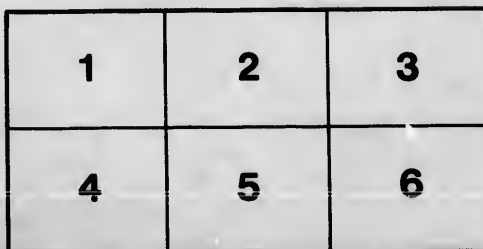
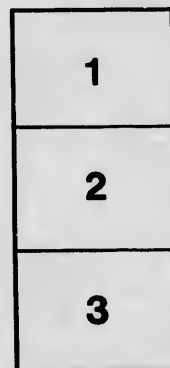
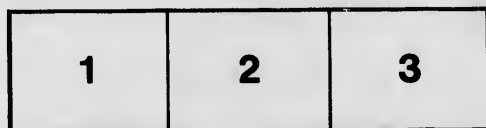
Metropolitan Toronto Library
Canadian History Department

The images appearing here are the best quality possible considering the condition and legibility of the original copy and in keeping with the filming contract specifications.

Original copies in printed paper covers are filmed beginning with the front cover and ending on the last page with a printed or illustrated impression, or the back cover when appropriate. All other original copies are filmed beginning on the first page with a printed or illustrated impression, and ending on the last page with a printed or illustrated impression.

The last recorded frame on each microfiche shall contain the symbol \rightarrow (meaning "CONTINUED"), or the symbol ∇ (meaning "END"), whichever applies.

Maps, plates, charts, etc., may be filmed at different reduction ratios. Those too large to be entirely included in one exposure are filmed beginning in the upper left hand corner, left to right and top to bottom, as many frames as required. The following diagrams illustrate the method:



L'exemplaire filmé fut reproduit grâce à la générosité de:

Metropolitan Toronto Library
Canadian History Department

Les images suivantes ont été reproduites avec le plus grand soin, compte tenu de la condition et de la netteté de l'exemplaire filmé, et en conformité avec les conditions du contrat de filmage.

Les exemplaires originaux dont la couverture en papier est imprimée sont filmés en commençant par le premier plat et en terminant soit par la dernière page qui comporte une empreinte d'impression ou d'illustration, soit par le second plat, selon le cas. Tous les autres exemplaires originaux sont filmés en commençant par la première page qui comporte une empreinte d'impression ou d'illustration et en terminant par la dernière page qui comporte une telle empreinte.

Un des symboles suivants apparaîtra sur la dernière image de chaque microfiche, selon le cas: le symbole \rightarrow signifie "A SUIVRE", le symbole ∇ signifie "FIN".

Les cartes, planches, tableaux, etc., peuvent être filmés à des taux de réduction différents. Lorsque le document est trop grand pour être reproduit en un seul cliché, il est filmé à partir de l'angle supérieur gauche, de gauche à droite, et de haut en bas, en prenant le nombre d'images nécessaire. Les diagrammes suivants illustrent la méthode.

ails
du
modifier
une
page

rata
o

elure,
à

32X

GOD SAVE THE QUEEN.



*Dedicated to the School Children of Toronto in Commemoration of the Diamond Jubilee of
Her Majesty Queen Victoria, June 22nd, 1897.*

1837 DIAMOND JUBILEE. 1897

FESTIVAL CHORUS OF THE TORONTO SCHOOL CHILDREN,
EXHIBITION PARK, JUNE 22ND, 1897.

Programme

DIAMOND JUBILEE CELEBRATION

June 22nd, 1897

SYNOPSIS OF THE DAY'S EVENTS.

- 9 a.m.—Assembly of the Military, etc., in Queen's Park.
10 a.m.—Procession starts from Queen's Park.
10 a.m.—Start of Yacht Race from south side of the Island.
12 noon.—Firing of the Royal Salute at Exhibition Park.
12.30 p.m.—Adjournment for lunch.
1.30 p.m.—School Children's Concert in the Grand Stand.
2 p.m.—General Athletic Sports in front of Grand Stand.
2 p.m.—Skiff Races.
2 p.m.—Children's Jubilee Games, west of Grand Stand and south of Main Building.
2.30 to 5 p.m.—Bands will play in different parts of Grounds.
5 p.m.—Gymnastic Competitions.
7.30 to 9.30 p.m.—Band Concerts in different parts of the city.
8 p.m.—Concert in Metropolitan Church.
9 p.m.—Firework Displays and Bonfires in numerous parks.
9 p.m.—Illumination of Yachts on the Bay.

Route of Procession.

The route of the procession will be from Queen's Park, via College and Carlton, Jarvis Street, King, Simcoe, Queen, Strachan Avenue, King and Dufferin Streets to Exhibition Grounds.

Upon arrival at the Exhibition Park the royal salute will be fired by the military, and adjournment will then be made for lunch.

Addresses.

Short addresses will be delivered from the Grand Stand, during the concert by the school children, by His Honor the Lieutenant-Governor and His Worship the Mayor.

School Children's Concert.

At 1.30 p.m., accompanied by the Band of the Royal Grenadiers, 4,000 children of the Public and Separate Schools will sing the following songs from the Grand Stand in Exhibition Park:

- "God Save the Queen."
"The Maple Leaf."
"Rule Britannia."
"Victoria is Our Queen."
"God Preserve Our Native Land."
"May God Preserve Thee, Canada."

Children's Jubilee Games.

These Games will be confined to the children of the Public and Separate Schools, and will commence at 2.30 p.m.

FEATURES OF THE DAY.

The Military.

- Lieut.-Col Otter and staff,
Governor-General's Body Guards,
9th Field Battery,
No. 2 Company Royal Regiment Canadian Infantry,
Band of Royal Grenadiers,
Royal Grenadiers,
Band of 48th Highlanders,
43rd Highlanders,
Band of Queen's Own Rifles,
Queen's Own Rifles.

Boys' Brigades.

- 12th Battalion Band,
Public School Drill Corps,
Industrial School Band,
Boys' Brigade of Canada,
Church Boys' Brigade,
Sunnyside Band.

Fire Department.

One hundred and fifty men of the Toronto Fire Brigade, with apparatus.

Labor Organizations.

The representatives of the various trades and labor organizations, with banners and illustrative tableau.

Fraternal and Benevolent Societies.

- Sons of Temperance
Sons of Ireland Protestant Association.
Knights of St. John and Malta.
Royal Arcanum.
Metropolitan Band.
Orange Societies.
Ancient Order of United Workmen.
German Benevolent Society.
Ancient Order of Foresters.
Bagpipes.
Scottish Societies.
Canadian Order of Foresters.
Stayner B. d.
Independent Order of Foresters.
Irish Protestant Benevolent Association.
Victoria Fife and Drum Band.
Grand United Order of Oddfellows.
Select Knights of Canada
Italian Benevolent Society.
Independent Order of Oddfellows (Manchester Unity).
Irish Catholic Benevolent Union Band.
Catholic Societies, including M. B. U., I. C. B. U.,
Emerald Benevolent Association, and
Knights of St. John.
Independent Order of Good Templars.
Royal Templars of Temperance.
Young Hebrew Association.
Maple Leaf Band.
Canadian Order of Oddfellows.
Catholic Order of Foresters.
Knights of the Macabees.
Woodmen of the World.
Luba's Band.
Independent Order of Oddfellows.
Civic Employees' Benevolent Union.
Foreign Consuls.
York Pioneers.
Free Library Board.
Technical School Board.
High School Board.
Separate School Board.
Public School Board.
City Council.
77th Battalion Band (Dundas).
Sons of England and St. George's Society.
Daughters and Maids of England Benevolent Society.

At 2 p.m. athletic sports will be held in front of the Grand Stand at Exhibition Park.

GOD SAVE THE QUEEN.

Three Words



A feature which is so essential in a bicycle is the leading characteristic of the "SUN." Experience has shown that the "Sun" excels in strength.



Is the word to describe the symmetry of form and the artistic finish of the "SUN." There is no more beautiful wheel.



Qualities are pre-eminent in the high grade "SUN." You need not be afraid to have it geared high. The bearings are perfect.

A \$100 Wheel for \$85

SUN BICYCLE.....

G. T. PENDRITH & CO.

73-81 Adelaide St. West

"LAKESIDE"

- - (our own make) \$65

Only second to the SUN

Better than most imported wheels



NEW CIVIC BUILDING.

