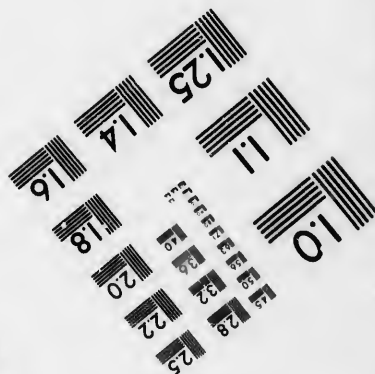
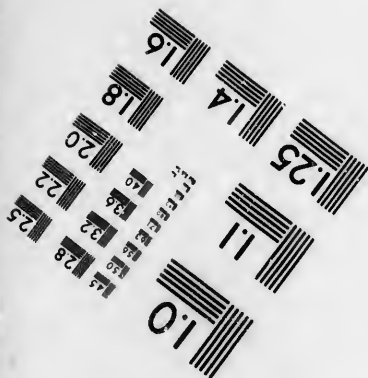
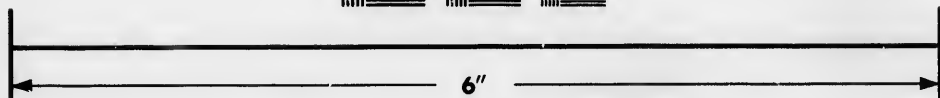
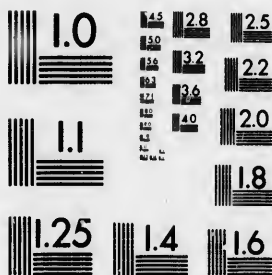


**IMAGE EVALUATION
TEST TARGET (MT-3)**



**Photographic
Sciences
Corporation**

23 WEST MAIN STREET
WEBSTER, N.Y. 14580
(716) 872-4503

18
20
22
25
32
36
45

**CIHM/ICMH
Microfiche
Series.**

**CIHM/ICMH
Collection de
microfiches.**



Canadian Institute for Historical Microreproductions / Institut canadien de microreproductions historiques

01
57

© 1986

Technical and Bibliographic Notes/Notes techniques et bibliographiques

The Institute has attempted to obtain the best original copy available for filming. Features of this copy which may be bibliographically unique, which may alter any of the images in the reproduction, or which may significantly change the usual method of filming, are checked below.

L'Institut a microfilmé le meilleur exemplaire qu'il lui a été possible de se procurer. Les détails de cet exemplaire qui sont peut-être uniques du point de vue bibliographique, qui peuvent modifier une image reproduite, ou qui peuvent exiger une modification dans la méthode normale de filmage sont indiqués ci-dessous.

- | | |
|--|--|
| <input type="checkbox"/> Coloured covers/
Couverture de couleur | <input type="checkbox"/> Coloured pages/
Pages de couleur |
| <input type="checkbox"/> Covers damaged/
Couverture endommagée | <input checked="" type="checkbox"/> Pages damaged/
Pages endommagées |
| <input type="checkbox"/> Covers restored and/or laminated/
Couverture restaurée et/ou pelliculée | <input type="checkbox"/> Pages restored and/or laminated/
Pages restaurées et/ou pelliculées |
| <input type="checkbox"/> Cover title missing/
Le titre de couverture manque | <input checked="" type="checkbox"/> Pages discoloured, stained or foxed/
Pages décolorées, tachetées ou piquées |
| <input type="checkbox"/> Coloured maps/
Cartes géographiques en couleur | <input type="checkbox"/> Pages detached/
Pages détachées |
| <input type="checkbox"/> Coloured ink (i.e. other than blue or black)/
Encre de couleur (i.e. autre que bleue ou noire) | <input type="checkbox"/> Showthrough/
Transparence |
| <input type="checkbox"/> Coloured plates and/or illustrations/
Planches et/ou illustrations en couleur | <input checked="" type="checkbox"/> Quality of print varies/
Qualité inégale de l'impression |
| <input type="checkbox"/> Bound with other material/
Relié avec d'autres documents | <input type="checkbox"/> Includes supplementary material/
Comprend du matériel supplémentaire |
| <input type="checkbox"/> Tight binding may cause shadows or distortion
along interior margin/
La reliure serrée peut causer de l'ombre ou de la
distorsion le long de la marge intérieure | <input type="checkbox"/> Only edition available/
Seule édition disponible |
| <input type="checkbox"/> Blank leaves added during restoration may
appear within the text. Whenever possible, these
have been omitted from filming/
Il se peut que certaines pages blanches ajoutées
lors d'une restauration apparaissent dans le texte,
mais, lorsque cela était possible, ces pages n'ont
pas été filmées. | <input type="checkbox"/> Pages wholly or partially obscured by errata
slips, tissues, etc., have been refilmed to
ensure the best possible image/
Les pages totalement ou partiellement
obscurcies par un feuillet d'errata, une pelure,
etc., ont été filmées à nouveau de façon à
obtenir la meilleure image possible. |
| <input checked="" type="checkbox"/> Additional comments:/
Commentaires supplémentaires: | [Printed ephemera] 1 sheet (verso blank) |

This item is filmed at the reduction ratio checked below/
Ce document est filmé au taux de réduction indiqué ci-dessous.

10X	14X	18X	22X	26X	30X
<input type="checkbox"/>	<input type="checkbox"/>	<input type="checkbox"/>	<input checked="" type="checkbox"/>	<input type="checkbox"/>	<input type="checkbox"/>
12X	16X	20X	24X	28X	32X

The copy filmed here has been reproduced thanks to the generosity of:

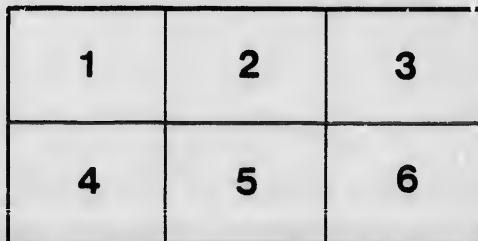
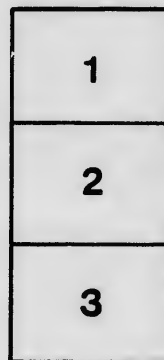
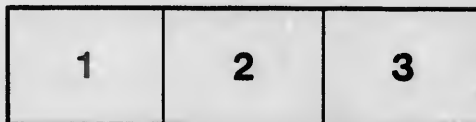
Manuscript Division
Public Archives of Canada

The images appearing here are the best quality possible considering the condition and legibility of the original copy and in keeping with the filming contract specifications.

Original copies in printed paper covers are filmed beginning with the front cover and ending on the last page with a printed or illustrated impression, or the back cover when appropriate. All other original copies are filmed beginning on the first page with a printed or illustrated impression, and ending on the last page with a printed or illustrated impression.

The last recorded frame on each microfiche shall contain the symbol \rightarrow (meaning "CONTINUED"), or the symbol ∇ (meaning "END"), whichever applies.

Maps, plates, charts, etc., may be filmed at different reduction ratios. Those too large to be entirely included in one exposure are filmed beginning in the upper left hand corner, left to right and top to bottom, as many frames as required. The following diagrams illustrate the method:



L'exemplaire filmé fut reproduit grâce à la générosité de:

Division des manuscrits
Archives publiques du Canada

Les images suivantes ont été reproduites avec le plus grand soin, compte tenu de la condition et de la netteté de l'exemplaire filmé, et en conformité avec les conditions du contrat de filmage.

Les exemplaires originaux dont la couverture en papier est imprimée sont filmés en commençant par le premier plat et en terminant soit par la dernière page qui comporte une empreinte d'impression ou d'illustration, soit par le second plat, selon le cas. Tous les autres exemplaires originaux sont filmés en commençant par la première page qui comporte une empreinte d'impression ou d'illustration et en terminant par la dernière page qui comporte une telle empreinte.

Un des symboles suivants apparaîtra sur la dernière image de chaque microfiche, selon le cas: le symbole \rightarrow signifie "A SUIVRE", le symbole ∇ signifie "FIN".

Les cartes, planches, tableaux, etc., peuvent être filmés à des taux de réduction différents. Lorsque le document est trop grand pour être reproduit en un seul cliché, il est filmé à partir de l'angle supérieur gauche, de gauche à droite, et de haut en bas, en prenant le nombre d'images nécessaire. Les diagrammes suivants illustrent la méthode.

re
détails
es du
modifier
er ure
ilmage

es

errata
to

pelure,
n à

32X



Agricultural

AT A MEETING
OF THE CORPORATION OF THE COUNTY OF
Agricultural

Held in the Court-Hall, at New-Carlisle, on
pursuant to notice

THE HONORABLE J. G. THOMPSON, P.
IT WAS ORDERED

THAT A

Cattle Show

BE HELD

IN NEW-CARLISLE

On the First Tuesday

AND A SIMILAR ONE

IN NEW-RICHMOND

On the Second Tuesday

For the under-mentioned

AT EACH PLACE,—

CATTLE.

Best imported Bull, 20s.
Best ditto reared in the Country, 30s. Second best, 20s.
Best yearling Bull, 15s. Second best, 10s.
Best Calf, 10s.
Best Cow, 4 years old, 20s. Second best, 15s.
Best ditto, 3 years old, 20s. Second best, 15s.
Best ditto, 2 years old, 20s. Second best, 15s.
Best Heifer under 3 years old, 15s. Second best, 10s.
Best ditto yearlings, 15s. Second best, 10s.
Best Calf, 10s. Second best, 7s. 6d.
Best fatted Ox, 20s. Second best, 15s.

FARM

Best Iron
Best Cultivator
Best Fanning
Best Straw

Best Butter
Best Cheese

Best Wool



Cultural Notice.

A MEETING OF THE COUNTY OF BONAVENTURE Cultural Society,

at New-Carlisle, on Wednesday the 21st instant,
pursuant to notice,

THOMPSON, PRESIDENT, IN THE CHAIR;

IT WAS ORDERED,

THAT A

Show and Fair

BE HELD

NEW-CARLISLE,

Tuesday in October next,

AND A SIMILAR ONE

NEW-RICHMOND,

Tuesday in October next,

for the following mentioned Prizes,

AT EACH PLACE,—VIZ

F A R M I N G I M P L E M E N T S.

Best Iron Plough, 20s. Best Wooden ditto, 15s.
Best Cultivator or Drill Harrow, 15s. Second best, 10s.
Best Fanning Mill, 20s. Second best, 15s.
Best Straw Cutter, 10s. Second best, 5s.

D A I R Y,

Best Butter, 28lbs. 15s. Second best, 10s. Third best, 5s.
Best Cheese, 28lbs. 10s. Second best, 7s. *6d.* Third best, 5s.

M A N U F A C T U R E S.

Best Woollen Cloth, 20 yards, 20s. Second best, 10s.

st, 20s.

10s.

Best Iron Plough, 20s. Best Wooden ditto, 15s.
Best Cultivator or Drill Harrow, 15s. Second best, 10s.

est, 20s.

Best Cultivator or Drill Harrow, 15s. Second best, 10s.
Best Fanning Mill, 23s. Second best, 15s.
Best Straw Cutter, 10s. Second best, 5s.

D A I R Y,

Best Butter, 28lbs. 15s. Second best, 10s. Third best, 5s.
Best Cheese, 28lbs. 10s. Second best, 7s. 6d. Third best, 5s.

M A N U F A C T U R E S,

Best Woollen Cloth, 20 yards, 20s. Second best, 10s.
Best Flannel, 20 yards, 15s. Second best, 10s.
Best Woollen Socks, six pairs, 7s. 6d. Second best, 5s.
Best Straw Hat or Bonnet, 10s. Second best, 5s.
Best Maple Sugar, 66lbs. 15s. Second best, 10s.
Best Hard Soap, 28lbs. 7s. 6d. Second best, 5s.
Best Flax dressed, 28lbs. 10s. Second best, 7s. 6d.
Best Hemp dressed, 28lbs. 10s. Second best, 7s. 6d.

V E G E T A B L E S.

Best Potatoes, two barrels, 10s. Second best, 5s.
Best Parsnips, one barrel, 10s. Second best, 5s.
Best Carrots, one barrel, 10s. Second best, 5s.
Best Onions, one barrel, 10s. Second best, 5s.
Best Beets, one barrel, 10s. Second best, 5s.
Best Mangel-Wurzel, one barrel, 10s. Second best, 5s.

PLOUGHING MATCH,

Prizes; First, 30s.—Second, 25s.—Third, 20s.
Horses to be their own drivers; Horses to be owned by Members; Ploughmen to be Members, or the usual Ploughmen of Members.

RAISED IN NEW-CARLISLE,

Second Tuesday in February next,
UNDER MENTIONED PRIZES.
S E E D S.

Best Turnip Seed, 3lbs. 10s. Second, 7s. 6d.
Best Timothy, two bushels, 20s. Second, 15s. Third, 10s.
Best Red Clover, one bushel, 40s. Second, 30s.
Best Indian Corn, one bushel, 10s. Second, 5s.
Best Flax seed, one bushel, 15s. Second, 10s. Third, 5s.

L I M E

The largest quantity used as manure on Land, not less than 200 bushels, 30s. Next, 20s.

BYE LAWS AND REGULATIONS.

17.—When Shows of the same kind, or Ploughing Matches are held at different places in the County in one year, they shall be considered as one and the same.
18.—No Prize shall be awarded to any Article unless considered by the Society.
19.—Prizes for Agricultural Produce, must be offered to the Members of the Society, to dispose of the same, and the same shall be equal in quality to the sample exhibited by the Corporation; and a certificate will be given to the exhibitor, that they are in possession of the same.
20.—No Animal intended for exhibition, shall be entered with the Show, unless it be on the ground at or before 12 at noon on the day of the Show; otherwise not to be allowed to compete.
21.—When a Prize shall be offered for any imported Animal, the same shall be adjudged superior to any Animal raised in the County.

MEMBERS ARE REQUESTED TO PAY IMMEDIATELY.

BY ORDER,

R. W. FITTON,
SECRETARY.

