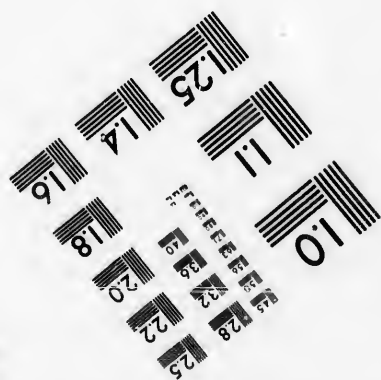
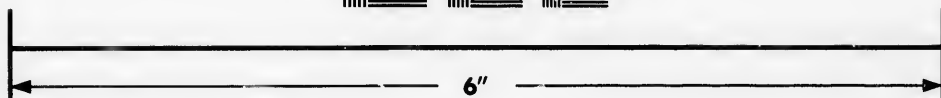
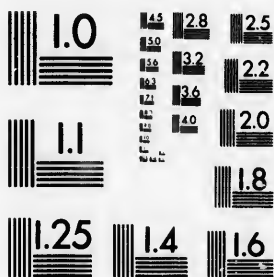


**IMAGE EVALUATION
TEST TARGET (MT-3)**



**Photographic
Sciences
Corporation**

23 WEST MAIN STREET
WEBSTER, N.Y. 14580
(716) 872-4503



Technical and Bibliographic Notes/Notes techniques et bibliographiques

The Institute has attempted to obtain the best original copy available for filming. Features of this copy which may be bibliographically unique, which may alter any of the images in the reproduction, or which may significantly change the usual method of filming, are checked below.

L'Institut a microfilmé le meilleur exemplaire qu'il lui a été possible de se procurer. Les détails de cet exemplaire qui sont peut-être uniques du point de vue bibliographique, qui peuvent modifier une image reproduite, ou qui peuvent exiger une modification dans la méthode normale de filmage sont indiqués ci-dessous.

- Coloured covers/
Couverture de couleur
- Covers damaged/
Couverture endommagée
- Covers restored and/or laminated/
Couverture restaurée et/ou pelliculée
- Cover title missing/
Le titre de couverture manque
- Coloured maps/
Cartes géographiques en couleur
- Coloured ink (i.e. other than blue or black)/
Encre de couleur (i.e. autre que bleue ou noire)
- Coloured plates and/or illustrations/
Planches et/ou illustrations en couleur
- Bound with other material/
Relié avec d'autres documents
- Tight binding may cause shadows or distortion along interior margin/
Le livre serré peut causer de l'ombre ou de la distorsion le long de la marge intérieure
- Blank leaves added during restoration may appear within the text. Whenever possible, these have been omitted from filming/
Il se peut que certaines pages blanches ajoutées lors d'une restauration apparaissent dans le texte, mais, lorsque cela était possible, ces pages n'ont pas été filmées.
- Additional comments: [Printed ephemera] [6] p.
Commentaires supplémentaires:

- Coloured pages/
Pages de couleur
- Pages damaged/
Pages endommagées
- Pages restored and/or laminated/
Pages restaurées et/ou pelliculées
- Pages discoloured, stained or foxed/
Pages décolorées, tachetées ou piquées
- Pages detached/
Pages détachées
- Showthrough/
Transparence
- Quality of print varies/
Qualité inégale de l'impression
- Includes supplementary material/
Comprend du matériel supplémentaire
- Only edition available/
Seule édition disponible
- Pages wholly or partially obscured by errata slips, tissues, etc., have been refilmed to ensure the best possible image/
Les pages totalement ou partiellement obscurcies par un feuillet d'errata, une pelure, etc., ont été filmées à nouveau de façon à obtenir la meilleure image possible.

This item is filmed at the reduction ratio checked below/
Ce document est filmé au taux de réduction indiqué ci-dessous.

10X	14X	18X	22X	26X	30X
<input type="checkbox"/>	<input checked="" type="checkbox"/>	<input type="checkbox"/>	<input type="checkbox"/>	<input type="checkbox"/>	<input type="checkbox"/>
12X	16X	20X	24X	28X	32X

The copy filmed here has been reproduced thanks to the generosity of:

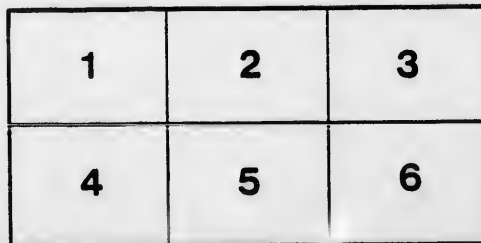
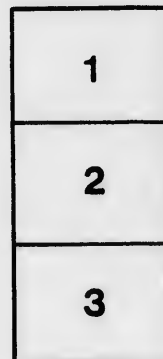
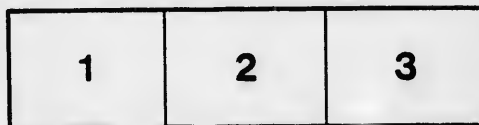
D. B. Weldon Library
University of Western Ontario
(Regional History Room)

The images appearing here are the best quality possible considering the condition and legibility of the original copy and in keeping with the filming contract specifications.

Original copies in printed paper covers are filmed beginning with the front cover and ending on the last page with a printed or illustrated impression, or the back cover when appropriate. All other original copies are filmed beginning on the first page with a printed or illustrated impression, and ending on the last page with a printed or illustrated impression.

The last recorded frame on each microfiche shall contain the symbol \rightarrow (meaning "CONTINUED"), or the symbol ∇ (meaning "END"), whichever applies.

Maps, plates, charts, etc., may be filmed at different reduction ratios. Those too large to be entirely included in one exposure are filmed beginning in the upper left hand corner, left to right and top to bottom, as many frames as required. The following diagrams illustrate the method:



L'exemplaire filmé fut reproduit grâce à la générosité de:

D. B. Weldon Library
University of Western Ontario
(Regional History Room)

Les images suivantes ont été reproduites avec le plus grand soin, compte tenu de la condition et de la netteté de l'exemplaire filmé, et en conformité avec les conditions du contrat de filmage.

Les exemplaires originaux dont la couverture en papier est imprimée sont filmés en commençant par le premier plat et en terminant soit par la dernière page qui comporte une empreinte d'impression ou d'illustration, soit par la seconde plat, selon le cas. Tous les autres exemplaires originaux sont filmés en commençant par la première page qui comporte une empreinte d'impression ou d'illustration et en terminant par la dernière page qui comporte une telle empreinte.

Un des symboles suivants apparaîtra sur la dernière image de chaque microfiche, selon le cas: le symbole \rightarrow signifie "A SUIVRE", le symbole ∇ signifie "FIN".

Les cartes, planches, tableaux, etc., peuvent être filmés à des taux de réduction différents. Lorsque le document est trop grand pour être reproduit en un seul cliché, il est filmé à partir de l'angle supérieur gauche, de gauche à droite, et de haut en bas, en prenant le nombre d'images nécessaires. Les diagrammes suivants illustrent la méthode.

ails
du
difier
une
nage

rrata
o

elure,
à



CHRISTMAS
EXERCISES



Hellmuth Ladies' College,

London, Ont.

Dec. 14th, 16th, 19th & 20th.



First Programme.

—AT—

Hellmuth Ladies' College, Wednesday Eve'g, Dec. 14, 1887,

AT 7.30 O'CLOCK.

Omnibusses will leave the Post Office at Seven o'clock.

EXHIBITION OF ART WORK IN THE STUDIOS.

Over 400 Pieces, the work of the Pupils during the Fall Term.

1. GRAND SYMPHONY, (C Minor, 1st Movement,) - - - *Beethoven*
(Three pianos : six performers.)
Misses R. and E. Herr, Labatt, Hetfield, I. English, and Baldwin.
2. VOCAL NUMBER—"Maiden Song," - - - - *Meyer-Hellmund*
Miss Lizzie Wardell.
3. PIANO SOLO—"Polonaise in C Sharp Minor," - - - - *Chopin*
Miss Margaret Bostwick.
4. ENGLISH RECITATION—"The Bell of Zanzora," - - - - *Rose*
Miss May Francis.
5. GRAND CONCERTO, in G Minor, - - - - - *Mendelssohn*
1st Movement—Miss Louisa Baldwin.
2nd and 3rd Movements—Miss Della Hetfield.
6. SPANISH RECITATION—"Breve Duracion de la Vida," - - - - *Melchor Diaz de Toledo*
Miss Lulu Whigham.
7. PIANO SOLO, - - - - - *Chopin*
a. Nocturne (C Sharp Minor.)
b. Mazurka (B Flat Major.)
Miss Etta Herr.
8. VOCAL NUMBER—Ballad: "Soft, Soft Wind," - . . . *Potter*
Miss Ida English.
9. ENGLISH RECITATION—"The First Quarrel," - - - - *Tennyson*
Miss Josephine Giffen.
10. GRAND CONCERTO, (E Flat, "Emperor," 1st Movement,) *Beethoven*
Miss Clara Weir.
11. CANTATA, for Solo and Chorus, "The Hermit's Harp," - - - *Abt*
St. Cæcilia Class.
Solos—Misses Kate Lord, Minnie Field, and Lizzie Wardell.

GOD SAVE THE QUEEN.

Omnibusses will leave at 9.30 o'clock.

*The Orchestral Accompaniments to the Concertos will be played on
a second Piano by the Musical Director,
Prof. Thomas Martin.*

Second Programme.

SACRED * CONCERT

— IN —

ST. ANN'S CHAPEL, H. L. C.,

— ON —

Friday Afternoon, December 16, 1887, at 3 o'clock.

Omnibusses will leave the Post Office at 2.30 o'clock.

-
1. ORGAN SOLO—Gavotte, E Flat, Op. 7, - - - - *Roeder-Eddy*
Miss Ruby Herr.
 2. ORGAN SOLO—"Marche Funebre," - - - - *Chopin-Gleason*
Miss Ida English.
 3. VOCAL SOLO—"I Heard the Voice of Jesus," - - - *Barlett*
Miss Kate Lord.
 4. ORGAN SOLO—"The Bridal Procession," Op. 45, - - - *Jenson-Eddy*
Miss Clara Weir.
 5. ORGAN SOLO—"Swedish Wedding March," - - - *Södermann*
Miss Etta Herr.
 6. VOCAL SOLO—"The Lost Chord," - - - - - *Sullivan*
Miss Lizzie Wardell.
 7. ORGAN SOLO—Offertoire, E Flat, - - - - *Lefebure-Wély*
Miss Alice Seaborne.

Omnibusses will leave at 4.30 o'clock.

The Pianos used at these Concerts were obtain

Third Programme.

—AT—

Hellmuth Ladies' College, Monday Eve'g, Dec. 19, 1887,

AT 7.30 O'CLOCK.

Omnibusses will leave Post Office at 7.00 o'clock.

1. OVERTURE to "Euryanthe," - - - - - *Weber*
(Three pianos: six performers.)
Misses R. and E. Herr, Labatt, I. English, Bostwick, and Hetfield.
2. ENGLISH RECITATION—"The First Settler," - - - *Will Carlton*
Miss Cate Dora.
3. VOCAL NUMBER—"Lovely Spring," - - - - *Coenen*
Miss Minnie Field.
4. "SCHERZO," from the G Minor Concerto, - - - *Saint-Saëns*
Miss Ephie Labatt.
5. GERMAN RECITATION—"Der Sänger," - - - - *Goethe*
Miss Kathleen Ball.
6. LARGHETTO, from the F Minor Concerto, - - - - *Chopin*
Miss Mabel Miner.
7. VOCAL NUMBER—Duet, "Pilgrims of the Night," - *Westbrook*
Misses Kate Lord and Lizzie Wardell.
8. CONCERTO—(C Minor, 1st Movement,) - - - - *Beethoven*
Miss Minnie Field.
9. VOCAL NUMBER—"Withering Flowers," - - - - *Schubert*
Miss Alice Seaborne.
10. GRAND TRIO—For Piano, Violin, and 'Cello, (B Flat Major,) *Rubinstein*
(1st Movement.)
Miss Clara Weir and Messrs. Poocke and Saunders.
11. ENGLISH RECITATION—"The Last Gun," - - - - *Anon*
Miss Dolly Young.
12. PIANO SOLO—"Impromptu in F Sharp," - - - - *Chopin*
Miss Ida English.
13. VOCAL NUMBER—"Forbidden Music," - - - - *Gastaldon*
Miss Kate Lord.
14. GRAND CONCERTO—(A Minor, 1st Movement,) - - *Schumann*
Miss Ruby Herr.

GOD SAVE THE QUEEN.

Omnibusses will leave at 9.30 o'clock.

ed from Messrs. A. & S. Nordheimer, Toronto.

Fourth Programme.

—AT—

Hellmuth Ladies' College, Tuesday Afternoon, Dec. 20,

AT 3.00 O'CLOCK.

Omnibusses will leave the Post Office at 2.30 o'clock.

- Weber
ld.
Carlton
Coenen
at-Saëns
Gœthe
Chopin
estbrook
ethoven
chubert
binstein
Anon
Chopin
staldon
umann
1. GREAT SYMPHONY—(C Major, 1st Movement.) - - - Schubert
(Three pianos: six performers.)
Misses R. and E. Herr, Labatt, I. English, Hetfield, and Miner.
 2. PIANO SOLO—"Andante con Variazione," (B Flat,) - - Schubert
Miss Virginia Seidle.
 3. VOCAL NUMBER—"The Requital," - - - - - Blumenthal
Miss Lizzie Wardell.
 4. CONCERTO, in D Minor, - - - - - Mozart
1st Movement—Miss Aggie Burwell.
2nd and 3rd Movements—Miss Maud Lilley.
 5. ENGLISH RECITATION—"Guilty or Not Guilty," - - Anon
Miss Pauline Chapman.
 6. PIANO SOLO—"Moonlight Sonata," - - - - - Beethoven
Miss Ruby Herr.
 7. VOCAL NUMBER—Cavatina—"Al Dolce Guidami," - Donizetti
Miss Ida English.
 8. GRAND CONCERTO, in F Sharp Minor, - - - - - Hiller
1st Movement—Miss Ethel Street.
2nd and 3rd Movements—Miss Alma Scott.
 9. FRENCH RECITATION—From "Polyeucte," - - - - - Corneille
Miss Josephine Collins.
 10. PIANO SOLOS—*a.* Etudé Revolution, - - - - - Chopin
b. Romance, - - - - - Rubinstein
c. Valse Chromatique, - - - - - Leschetizky
Miss Mary McIntosh.
 11. CHORUS—"Good Night," - - - - - Leslie
St. Cœcilia Class.
 12. ENGLISH RECITATION—"Sister and I," - - - - - Anon
Miss Lizzie Wardell.
 13. VOCAL NUMBER—"Dedication," - - - - - Schumann
Miss Kate Lord.
 14. GRAND CONCERTO, in G Major, - - - - - Beethoven
1st Movement (Cadenza by Reinecke)—Miss Etta Herr.
2nd and 3rd Movements (Cadenza by Thos. Martin)—Miss Evelyn Morphy.

GOD SAVE THE QUEEN.

Omnibusses will leave at 4.30 o'clock.



A MERRY
XMAS



and
HAPPY
NEW
YEAR



