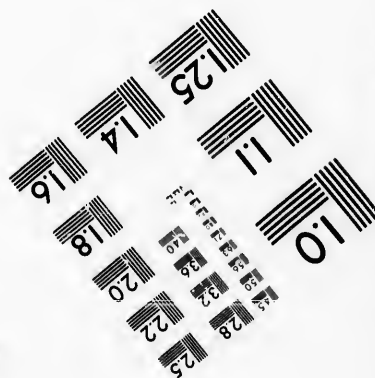
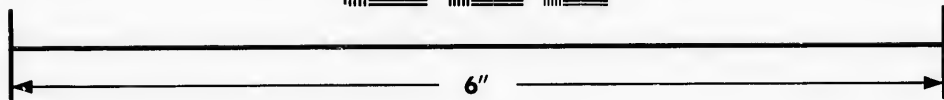
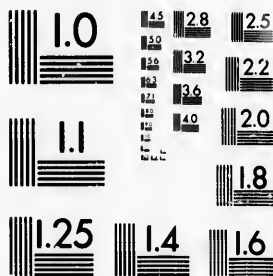


**IMAGE EVALUATION  
TEST TARGET (MT-3)**



**Photographic  
Sciences  
Corporation**

23 WEST MAIN STREET  
WEBSTER, N.Y. 14580  
(716) 872-4503

**CIHM/ICMH  
Microfiche  
Series.**

**CIHM/ICMH  
Collection de  
microfiches.**



Canadian Institute for Historical Microreproductions / Institut canadien de microreproductions historiques

**© 1987**

Technical and Bibliographic Notes/Notes techniques et bibliographiques

The Institute has attempted to obtain the best original copy available for filming. Features of this copy which may be bibliographically unique, which may alter any of the images in the reproduction, or which may significantly change the usual method of filming, are checked below.

L'Institut a microfilmé le meilleur exemplaire qu'il lui a été possible de se procurer. Les détails de cet exemplaire qui sont peut-être uniques du point de vue bibliographique, qui peuvent modifier une image reproduite, ou qui peuvent exiger une modification dans la méthode normale de filmage sont indiqués ci-dessous.

- |  |  |
|--|--|
| <input type="checkbox"/> Coloured covers/<br>Couverture de couleur   | <input type="checkbox"/> Coloured pages/<br>Pages de couleur   |
| <input type="checkbox"/> Covers damaged/<br>Couverture endommagée  | <input type="checkbox"/> Pages damaged/<br>Pages endommagées   |
| <input type="checkbox"/> Covers restored and/or laminated/<br>Couverture restaurée et/ou pelliculée  | <input type="checkbox"/> Pages restored and/or laminated/<br>Pages restaurées et/ou pelliculées  |
| <input type="checkbox"/> Cover title missing/<br>Le titre de couverture manque   | <input checked="" type="checkbox"/> Pages discoloured, stained or foxed/<br>Pages décolorées, tachetées ou piquées   |
| <input type="checkbox"/> Coloured maps/<br>Cartes géographiques en couleur   | <input type="checkbox"/> Pages detached/<br>Pages détachées  |
| <input type="checkbox"/> Coloured ink (i.e. other than blue or black)/<br>Encre de couleur (i.e. autre que bleue ou noire)   | <input checked="" type="checkbox"/> Showthrough/<br>Transparence   |
| <input type="checkbox"/> Coloured plates and/or illustrations/<br>Planches et/ou illustrations en couleur  | <input type="checkbox"/> Quality of print varies/<br>Qualité inégale de l'impression   |
| <input type="checkbox"/> Bound with other material/<br>Relié avec d'autres documents   | <input type="checkbox"/> Includes supplementary material/<br>Comprend du matériel supplémentaire   |
| <input type="checkbox"/> Tight binding may cause shadows or distortion<br>along interior margin/<br>La reliure serrée peut causer de l'ombre ou de la<br>distorsion le long de la marge intérieure   | <input type="checkbox"/> Only edition available/<br>Seule édition disponible   |
| <input type="checkbox"/> Blank leaves added during restoration may<br>appear within the text. Whenever possible, these<br>have been omitted from filming/<br>Il se peut que certaines pages blanches ajoutées<br>lors d'une restauration apparaissent dans le texte,<br>mais, lorsque cela était possible, ces pages n'ont<br>pas été filmées. | <input type="checkbox"/> Pages wholly or partially obscured by errata<br>slips, tissues, etc., have been refilmed to<br>ensure the best possible image/<br>Les pages totalement ou partiellement<br>obscurcies par un feuillet d'errata, une pelure,<br>etc., ont été filmées à nouveau de façon à<br>obtenir la meilleure image possible. |
| <input checked="" type="checkbox"/> Additional comments: / [Printed ephemera] [3] p.<br>Commentaires supplémentaires:  |  |

This item is filmed at the reduction ratio checked below/  
Ce document est filmé au taux de réduction indiqué ci-dessous.

10X	12X	14X	16X	18X	20X	22X	24X	26X	28X	30X	32X
						✓					

The copy filmed here has been reproduced thanks to the generosity of:

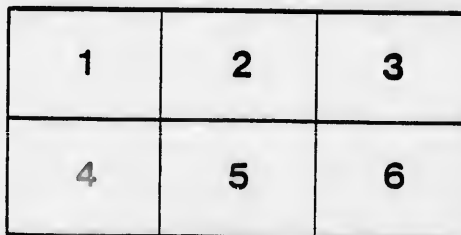
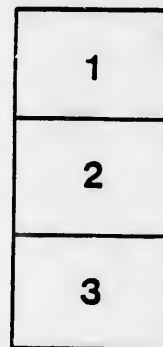
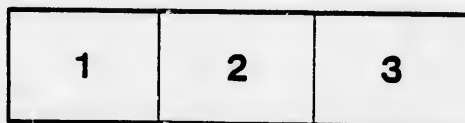
Musée du Château Ramezay,  
Montréal

The images appearing here are the best quality possible considering the condition and legibility of the original copy and in keeping with the filming contract specifications.

Original copies in printed paper covers are filmed beginning with the front cover and ending on the last page with a printed or illustrated impression, or the back cover when appropriate. All other original copies are filmed beginning on the first page with a printed or illustrated impression, and ending on the last page with a printed or illustrated impression.

The last recorded frame on each microfiche shell contain the symbol  $\rightarrow$  (meaning "CONTINUED"), or the symbol  $\nabla$  (meaning "END"), whichever applies.

Maps, plates, charts, etc., may be filmed at different reduction ratios. Those too large to be entirely included in one exposure are filmed beginning in the upper left hand corner, left to right and top to bottom, as many frames as required. The following diagrams illustrate the method:



L'exemplaire filmé fut reproduit grâce à la générosité de:

Musée du Château Ramezay,  
Montréal

Les images suivantes ont été reproduites avec le plus grand soin, compte tenu de la condition et de la netteté de l'exemplaire filmé, et en conformité avec les conditions du contrat de filmage.

Les exemplaires originaux dont la couverture en papier est imprimée sont filmés en commençant par le premier plat et en terminant soit par la dernière page qui comporte une empreinte d'impression ou d'illustration, soit par le second plat, selon le cas. Tous les autres exemplaires originaux sont filmés en commençant par la première page qui comporte une empreinte d'impression ou d'illustration et en terminant par la dernière page qui comporte une telle empreinte.

Un des symboles suivants apparaîtra sur la dernière image de chaque microfiche, selon le cas: le symbole  $\rightarrow$  signifie "A SUIVRE", le symbole  $\nabla$  signifie "FIN".

Les cartes, planches, tableaux, etc., peuvent être filmés à des taux de réduction différents. Lorsque le document est trop grand pour être reproduit en un seul cliché, il est filmé à partir de l'angle supérieur gauche, de gauche à droite, et de haut en bas, en prenant le nombre d'images nécessaire. Les diagrammes suivants illustrent la méthode.

errata  
to

pelure.  
on à



32X

6.39  
CANADIAN PACIFIC RAILWAY,

EASTERN DIVISION.

—••—  
*Montreal, August 15th, 1882.*

**To Members of the American Association for the Advancement of Science**

*In Convention at Montreal.*

We extend to you a cordial invitation to participate in a free excursion over the line of our road, from Montreal to Ottawa and return, on Saturday August 26th, 1882, which we will be pleased to have you accept, as we consider your visit to the Dominion incomplete without a view of its capital.

Our line from Montreal to Ottawa runs through an old-settled country, very rich as an agricultural district. We have a perfect road-bed, steel rails, iron bridges, elegant coaches, quick time and a constantly changing panorama of lake, river and mountain scenery. Our line is well called "the great scenic route of Canada," for as the train moves swiftly on, we find ourselves skimming along the banks of the Ottawa river, many parts of which have been rendered romantic by the residence and songs of the poet Tom Moore. Again we are carried from the river to the foot of dark old mountains which frown down from their lofty heights at the screech of the engine whistle, which echoes a hundred times through their pine forests, ravines and gorges. In a few minutes we are out again in the open country with distant views of the Laurentide range of mountains—often times called the Catskills of Canada—then back again to the Ottawa, studded with its numerous islands, giving it the appearance of an enchanted lake; over noisy brooks and wild water-falls whose beauty can be seen from the car windows, as the train passes over the bridges that span their streams which rush on to the Ottawa, past the inexhaustible beds of phosphate, in full view of the Gatineau mountains, and before reaching Ottawa we pass in close proximity to the Hills of Hull.

From Calumet, midway between Montreal and Ottawa, the celebrated Caledonia Springs—whose waters are noted for their medicinal properties and wonderful curative powers—are easily accessible by ferry and stage from the station. Entering Ottawa we cross on the new and elegant iron bridge spanning the river at that point. The City is full of interest to tourists, pleasure seekers and sight seers. The public buildings here erected by the Government for the use of the Dominion Parliament, and the different department offices of the General Government, reflect great credit both upon a Government liberal enough to provide for their erection and the architect capable of designing such models of beauty. The buildings are located upon a bluff overlooking the Ottawa river and its valley, and from this spot may be seen one of the finest views in Canada. The library—one of the largest, most interesting and valuable in the world,—contains over 100,000 volumes. It is in a large building of elegant design and finish, which is devoted to its exclusive use.

Rideau Hall, the residence of His Excellency the Governor-General and H. R. H. the Princess Louise, is interesting to tourists, and all are allowed to visit the beautiful grounds during the summer season.

The scenery in and around Ottawa will be found grand and impressive. One of the principal attractions is the Chaudiere Falls, which are two hundred feet wide and forty deep, and next to Niagara are not excelled in importance, beauty and grandeur by any in this country. On the northern side the Little Chaudiere Falls after their leap go into a subterranean passage and are found again at a place called the "Kettles," half a mile lower down. Below the falls the river is spanned by a suspension bridge, from which an excellent view of them is to be had.

Ottawa, owing to its great natural water-power, and the unlimited supply of timber along the Ottawa river, is one of the greatest lumber-markets in the world. Millions of logs are floated down the upper Ottawa river, and here converted into lumber ready for shipment. The immense saw-mills at work day and night, and the vast piles of lumber stretching as far as the eye can reach, will give the visitor an idea of the enormous amount of this traffic.

The Rideau Canal, running from the St. Lawrence River at Kingston, joins the Ottawa River at Ottawa, the descent being made by a series of eight massive stone locks. The military bridges, constructed of stone and iron, are splendid specimens of engineering skill.

The population of the City is about 40,000, not including the city of Hull on the opposite side of the river. Located as it is away from the border, Ottawa retains its national characteristics to a greater extent than the other principal Canadian cities, except Quebec, and bears a marked resemblance to some of the older European towns. French and English are spoken with equal fluency by many of the inhabitants.

The excursionists will leave Montreal on Saturday (Hochelaga Depot) at 7.30 a. m., (Mile End) 7.40 a. m., reaching Ottawa at mid-day. Returning they will have the option of spending Sunday in the Capital, leaving there Monday at 8 a. m., reaching Montreal at noon, or by leaving Ottawa Saturday evening about 6.00 reach Montreal about 10.30 p. m.

As it will be necessary for us to know the number that will participate in the excursion, in order to provide the necessary accommodation, members accepting will please inform Prof. Bovey on receipt of this, furnishing him with their names and names of members of their families who will accompany them.

Prof. Bovey will be furnished with tickets for the occasion, and he will deliver them on Thursday August 24th, upon application of those members whose names have been previously furnished him.

Very respectfully yours,

ARCHER BAKER,  
*General Superintendent.*

GEO. W. HIBBARD,  
*Asst. Gen. Pass. Agt.*

