

**CIHM
Microfiche
Series
(Monographs)**

**ICMH
Collection de
microfiches
(monographies)**



Canadian Institute for Historical Microreproductions / Institut canadien de microreproductions historiques

© 1995

Technical and Bibliographic Notes / Notes technique et bibliographiques

The Institute has attempted to obtain the best original copy available for filming. Features of this copy which may be bibliographically unique, which may alter any of the images in the reproduction, or which may significantly change the usual method of filming are checked below.

- ☒ Coloured covers / Couverture de couleur
- ☐ Covers damaged / Couverture endommagée
- ☐ Covers restored and/or laminated / Couverture restaurée et/ou pelliculée
- ☐ Cover title missing / Le titre de couverture manque
- ☐ Coloured maps / Cartes géographiques en couleur
- ☒ Coloured ink (i.e. other than blue or black) / Encre de couleur (i.e. autre que bleue ou noire)
- ☒ Coloured plates end/or illustrations / Planches et/ou illustrations en couleur
- ☐ Bound with other material / Relié avec d'autres documents
- ☐ Only edition available / Seule édition disponible
- ☐ Tight binding may cause shadows or distortion along interior margin / La reliure serrée peut causer de l'ombre ou de la distorsion le long de la marge intérieure.
- ☐ Blank leaves added during restorations may appear within the text. Whenever possible, these have been omitted from filming / Il se peut que certaines pages blanches ajoutées lors d'une restauration apparaissent dans le texte, mais, lorsque cela était possible, ces pages n'ont pas été filmées.
- ☐ Additional comments / Commentaires supplémentaires:

L'Institut a microfilmé le meilleur exemplaire qu'il lui a été possible de se procurer. Les détails de cet exemplaire qui sont peut-être uniques du point de vue bibliographique, qui peuvent modifier une image reproduite, ou qui peuvent exiger une modifications dans la méthode normale de filmage sont indiqués ci-dessous.

- ☐ Coloured pages / Pages de couleur
- ☐ Pages damaged / Pages endommagées
- ☐ Pages restored and/or laminated / Pages restaurées et/ou pelliculées
- ☒ Pages discoloured, stained or foxed / Pages décolorées, tachetées ou piquées
- ☐ Pages detached / Pages détachées
- ☒ Showthrough / Transparence
- ☐ Quality of print varies / Qualité inégale de l'impression
- ☐ Includes supplementary material / Comprend du matériel supplémentaire
- ☐ Pages wholly or partially obscured by errata slips, tissues, etc., have been refilmed to ensure the best possible image / Les pages totalement ou partiellement obscurcies par un feuillet d'errata, une pelure, etc., ont été filmées à nouveau de façon à obtenir la meilleure image possible.
- ☐ Opposing pages with varying colouration or discolourations are filmed twice to ensure the best possible image / Les pages s'opposant ayant des colorations variables ou des décolorations sont filmées deux fois afin d'obtenir la meilleur image possible.

This item is filmed at the reduction ratio checked below/
Ce document est filmé au taux de réduction indiqué ci-dessous.

10X	14X	18X	22X	26X	30X
<input type="checkbox"/>	<input type="checkbox"/>	<input checked="" type="checkbox"/>	<input type="checkbox"/>	<input type="checkbox"/>	<input type="checkbox"/>
12X	16X	20X	24X	28X	32X

The copy filmed here has been reproduced thanks to the generosity of:

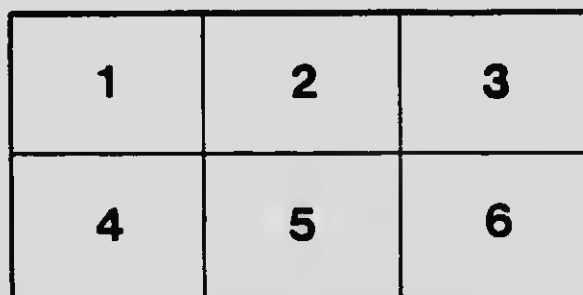
Glenbow-Alberta Institute
Calgary

The images appearing here are the best quality possible considering the condition and legibility of the original copy and in keeping with the filming contract specifications.

Original copies in printed paper covers are filmed beginning with the front cover and ending on the last page with a printed or illustrated impression, or the back cover when appropriate. All other original copies are filmed beginning on the first page with a printed or illustrated impression, and ending on the last page with a printed or illustrated impression.

The last recorded frame on each microfiche shall contain the symbol ➡ (meaning "CONTINUED"), or the symbol ▼ (meaning "END"), whichever applies.

Maps, plates, charts, etc., may be filmed at different reduction ratios. Those too large to be entirely included in one exposure are filmed beginning in the upper left hand corner, left to right and top to bottom, as many frames as required. The following diagrams illustrate the method:



L'exemplaire filmé fut reproduit grâce à la générosité de:

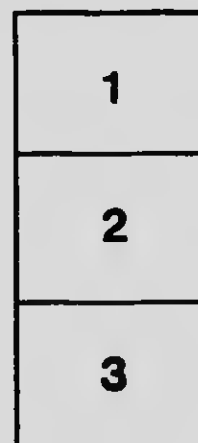
Glenbow-Alberta Institute
Calgary

Les images suivantes ont été reproduites avec le plus grand soin, compte tenu de la condition et de l'état de l'exemplaire filmé, et en conformité avec les conditions du contrat de filmage.

Les exemplaires originaux dont la couverture en papier est imprimée sont filmés en commençant par le premier plat et en terminant soit par la dernière page qui comporte une empreinte d'impression ou d'illustration, soit par le second plat, selon le cas. Tous les autres exemplaires originaux sont filmés en commençant par la première page qui comporte une empreinte d'impression ou d'illustration et en terminant par la dernière page qui comporte une telle empreinte.

Un des symboles suivants apparaîtra sur la dernière image de chaque microfiche, selon le cas: le symbole ➡ signifie "À SUIVRE", le symbole ▼ signifie "FIN".

Les cartes, planches, tableaux, etc., peuvent être filmés à des taux de réduction différents. Lorsque le document est trop grand pour être reproduit en un seul cliché, il est filmé à partir de l'angle supérieur gauche, de gauche à droite, et de haut en bas, en prenant le nombre d'images nécessaire. Les diagrammes suivants illustrent la méthode.



MICROCOPY RESOLUTION TEST CHART

(ANSI and ISO TEST CHART No. 2)

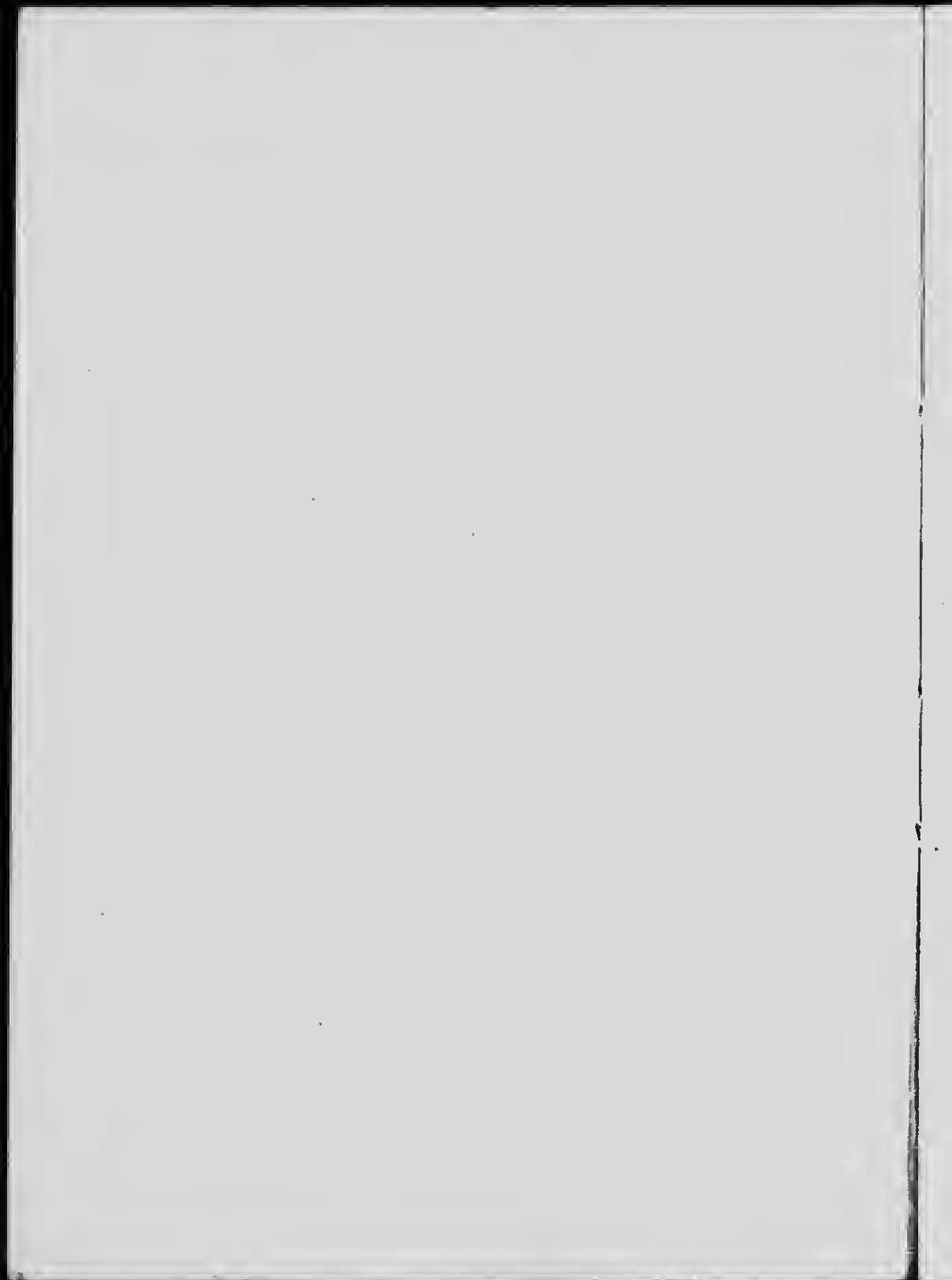


APPLIED IMAGE Inc

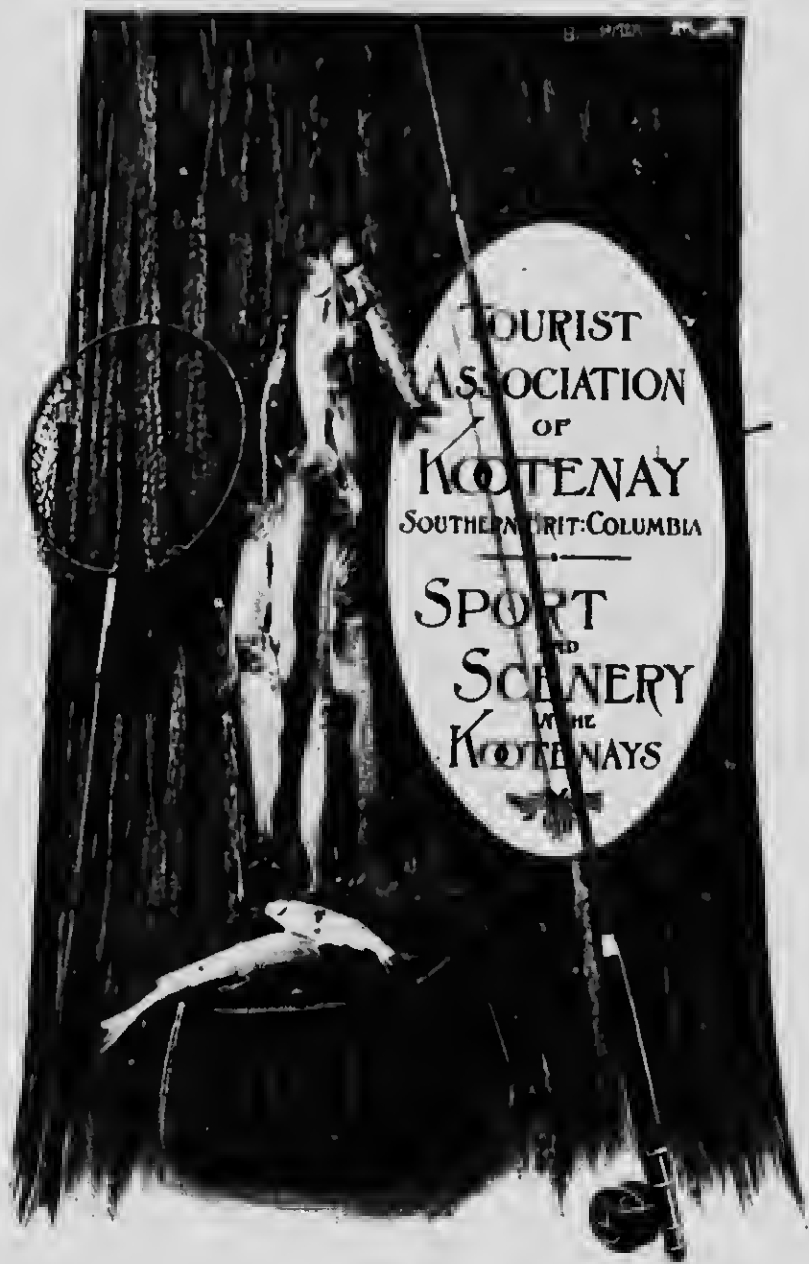
1653 East Main Street
Rochester, New York 14609 USA
(716) 482 - 0300 - Phone
(716) 288 - 5989 - Fax



Sport and Scenery



971.11
1820



A KOOTENAY BIG TREE, WITH CATCH OF MOUNTAIN TROUT

KOOTENAY, B. C.



KOOTENAY is that part of Southern British Columbia stretching from the international boundary northward to the main line of the Canadian Pacific railway, and almost enclosed by the

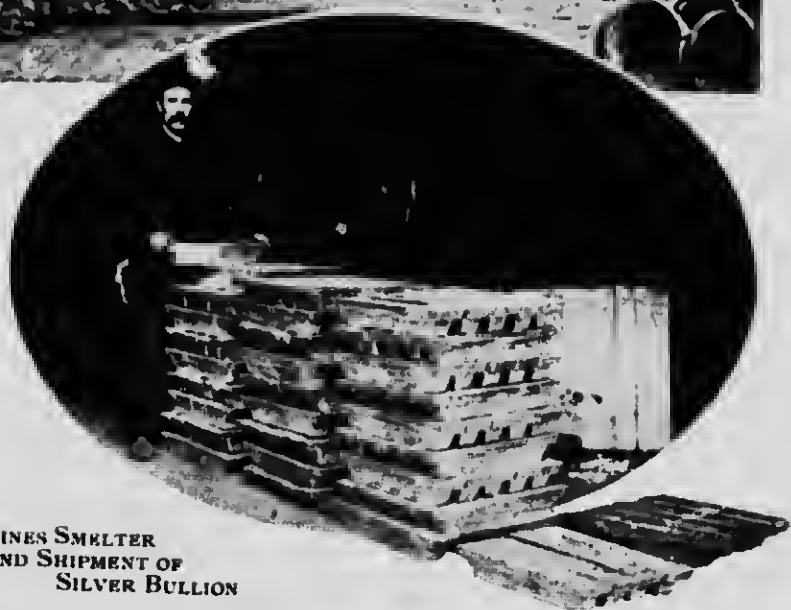


BIRD'S EYE VIEW OF NELSON, SHOWING THE LAKE AND
SURROUNDING MOUNTAINS

waters of the Columbia and Kootenay rivers. It is the centre of British Columbia's vast mountain ranges, and within its limits can be found the grandest of mountain



KOOTENAY INDIANS AND
VIEW OF KOOTENAY LAKE



HALL MINES SMELTER
AND SHIPMENT OF
SILVER BULLION

views and inaccessible peaks ; charming scenery that will call to the remembrance of the visitor the country that has been made famous by Wordsworth and Ruskin, and sport that is not excelled on the whole continent.

To the city dweller, who seeks health and recreation in new and comparatively unexplored regions, the Kootenay district with its wealth of sport and scenery offers great attractions, while at the same time every personal comfort in travel and living can be obtained. The Canadian Pacific railway traverses it in length and breadth with its Crow's Nest branch of the main line of railway, and its lines of lake and river steamers and the Great Northern railway furnishes communication in a direct line from Spokane.

NELSON

the Commercial, Political and Judicial Capital of the



BAKER STREET, NELSON

Kootenays, is beautifully situated on the south shore of the west arm of Kootenay lake—a well built city with well equipped hotels, and all the comforts and conveniences of a much older and larger city—electric light, gas, water, well paved streets, tramway system and other advantages make this a most charming residential city.



BONNINGTON FALLS, KOOTENAY RIVER

At an altitude of 1,700 to 2,000 feet above the sea level, Nelson has a salubrious climate ; the summers are never hot and exhausting, while the cool nights bring most refreshing sleep to the tired fisherman, hunter or excursionist. In the neighborhood is some of the most exquisite and charming scenery. The Kootenay river below Nelson—draining Kootenay lake

into the Columbia river—is for some 20 miles a foaming torrent, with here and there a quiet pool that will charm and satisfy the most enthusiastic fisherman.

From Nelson excursions can be made to the various places of interest throughout the whole district. Daily trains carry one to the Boundary country ; the Rossland camp, the site of the celebrated LeRoi mines ; to the



VIEWS OF
KOOTENAY
RIVER

coal fields of East Kootenay ; to the Slocan country, with its rapidly developing silver-lead mines ; to the Ymir mines and other large and important mining centres.

The sportsman can find every requisite for shooting, fishing, hunting and camping in the well furnished retail stores of Nelson and neighboring towns of the Kootenays.



General View of Nelson, B

The Metro

FROM

Tourists who wish to include the Kootenays in
ask for their tickets to read via Nelson and
way. Nelson is the western terminus of



Nelson, B. C.

The Metropolis of the Kootenays

FROM KOOTENAY LAKE

Kootenays in their trip from Coast to Coast should
visit Nelson and the Crow's Nest Pass at least one
terminus of the Crow's Nest Pass railway.



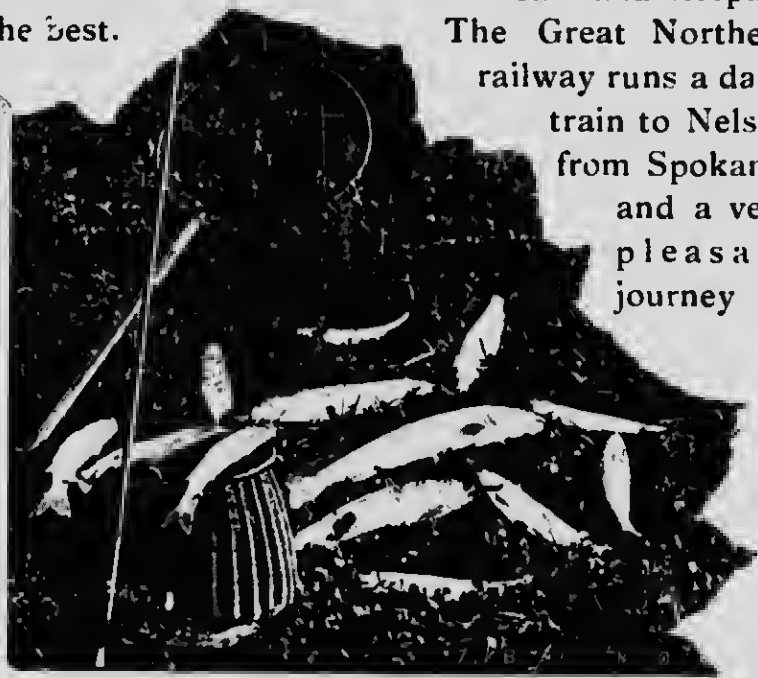
TROUT FISHING, KOOTENAY LAKE

The way to reach Nelson for the traveller from the Pacific coast is to leave the main line of the Canadian Pacific railway at Revelstoke and take the daily boat which runs through the charming and Swiss-like scenery of the Arrow lakes to Robson, whence a short railway trip of two hours brings one to Nelson. Coming from the East the passenger can leave the main line at Dunmore Junction, and in a day's journey through the Rocky mountains and the varied and pleasant scenery of the foothills, he comes to Kootenay Landing, at the south end of Kootenay lake, and after five or six hours' journey in a completely and comfortably equipped steamer he will arrive at Nelson. On all these routes the accommodation

is of the best.

for meals and sleeping

The Great Northern railway runs a daily train to Nelson from Spokane, and a very pleasant journey of



A DAY'S CATCH

about 10 hours can be passed in coming to Nelson by this route. This train also has parlor and buffet cars.

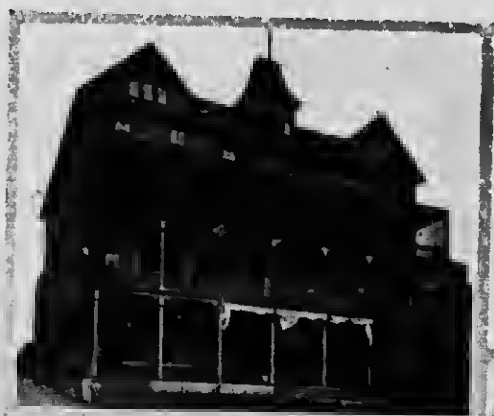
As already pointed out, to those seeking new fields for hunting, scenery and health, Nelson cannot be surpassed, and should not be overlooked. Visitors to



A GROUP OF NATIVE INDIANS AND A POPULAR FISHING RESORT

the city will have opportunities afforded of enquiring into the vast undeveloped resources of this delightful part of the most beautiful of the provinces of the fair Dominion of Canada.

The Tourist Association has a permanent office in the central part of the city and the Secretary will always be found ready to answer any correspondence and give advice and assistance to tourists and others.



HOTEL
STRATHCONA



HOTEL
HUME

TWO OF NELSON'S PRINCIPAL HOTELS

GAME LAWS

BIG GAME

Moose (bull), September 1st to December 1st. Females and calves under one year protected.

Deer, September 1st to December 14th. Fawn under one year protected.

Caribou, September 1st to December 31. Females and calves protected at all times.

Elk (Wapiti), September 1st to December 31st. Females and calves under two years protected.

Mountain Goat and Sheep, September 1st to December 14th. Mountain Sheep—Ewes and lambs protected.

Not more than five caribou may be killed by one person in any season, nor more than ten deer, two (bull) elk, two (bull) moose, two (bull) wapiti, five mountain goats or three mountain sheep (rams). Deer must not be hunted with dogs, or killed for hides alone.

SMALL GAME

Beaver, November 2nd to March 31st.

Hare, September 1st to December 31st.

Land Otter and Marten, November 2nd to March 31st.

GAME BIRDS

Blittern, September 1st to February 28th.

Duck of all kinds, September 1st to February 28th. Not more than 250 ducks may be shot in one season.

Grouse of all kinds, including Prairie Chicken, September 1st to December 31st.

Heron, Plover, September 1st to February 28th.

Partridge (Englisb), Pheasants, Quail of all kinds, are protected.

Insectivorous Birds always protected.

The buying and selling of heads of Mountain Sheep is prohibited.

FISHING

Large Grey Trout, Lunge, Toulapi, Land-locked Salmon, March 16th to October 14th.

Speckled Trout, March 16th to October 14th.

Salmon Trout, December 1st to September 30th.

Salmon Angling, March 2nd to October 30th.

Sturgeon, July 16th to May 31st.

Whitefish, December 1st to September 30th.



BIG GAME OF THE KOOTENAYS

RAILWAY AND STEAMBOAT CONNECTIONS

CANADIAN PACIFIC RAILWAY

AT REVELSTOKE —With "Imperial Limited" Train. Upon arrival of No. 2 Train from Vancouver a daily Boat leaves for Robson on the Columbin river, about 9 hours' journey.	
From Robson to Nelson, daily train on arrival of Boat, about 1½ hours' journey; arriving at Nelson at.....	10.15 p. m.
AT DUNMORE — With "Imperial Limited" Train. Upon arrival of No. 1 Train from all points east a daily Train leaves for Kootenay Landing.	
From Kootenay Landing, daily Boat, on arrival of Train, to Nelson, about 5 hours' journey, arriving at Nelson at.....	6.15 p. m.
Passengers going westward leave Nelson at.....	7.15 p. m.
Passengers going eastward leave Nelson at..	4.30 a. m.
(Going on board the previous evening)	

Meals and Berths on all Boats. Pullman, Dining and Tourist Cars on all Trains.

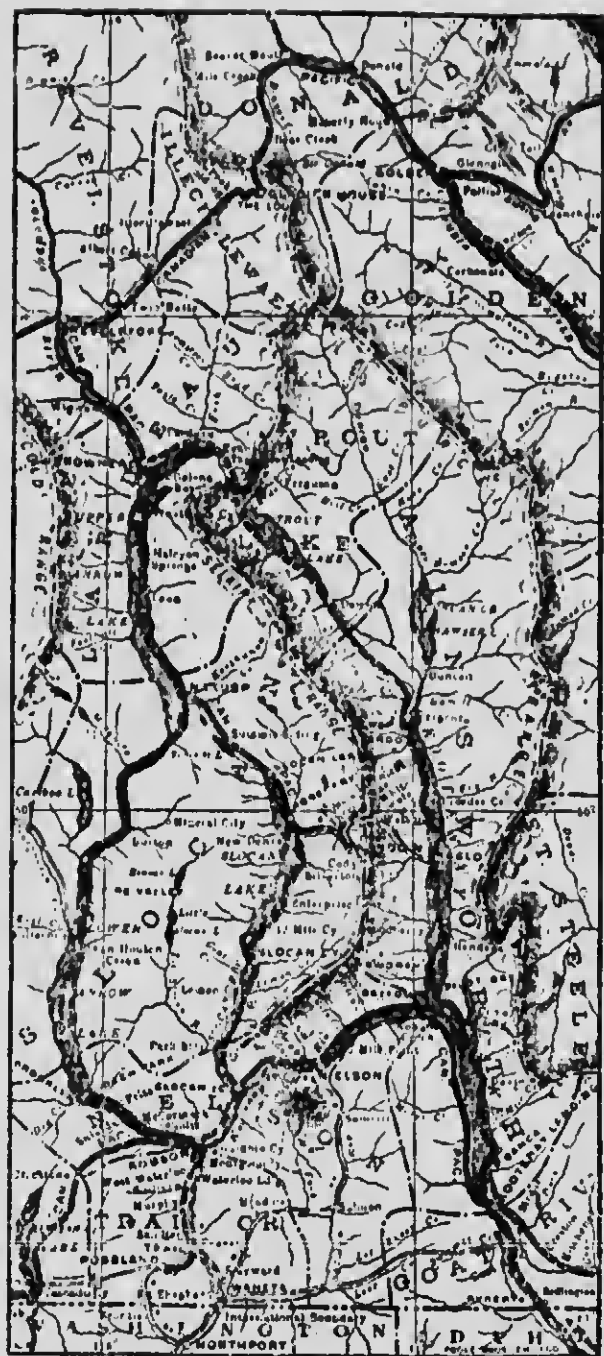
LOCAL TRAINS AND BOATS

	Leaves Nelson	Arrives Nelson
Daily Train to and from Trail, Rossland, Bonnd- / ary points, etc.....	8.00 a. m. 7.15 p. m.	10.15 p. m. 10.15 p. m.
Daily Train (except Sunday) for Slocan Junction, Slocan City, Sandon, New Denver, etc.....	10.15 a. m.	5.15 p. m.
Daily Boat (except Sunday) for Proctor, Kaslo, Trout lake and Kootenay lake points....	7.00 a. m.	6.15 p. m.

GREAT NORTHERN RAILWAY

	Leaves Nelson	Arrives Nelson
Daily Train to and from Spokane. About 10 hours' journey. Pullman and Buffet Car nttached	8.15 a. m.	6.35 p. m.
Daily Boat for Proctor, Kaslo, Trout lake and Kootenay lake points.....	8.00 a. m.	4.30 p. m.
(Passengers can go on board the previous evening)		
At Spokane passengers connect with the Main Line Express Trains of the Great Northern and Northern Pacific Railway Companies for all points east, west and south.		

Passengers are referred to the Railway Time Tables for detailed information.



MAP OF THE KOOTENAY DISTRICT

TOURIST ASSOCIATION OF KOOTENAY



PRESIDENT

J. A. TURNER, ESQ.

VICE-PRESIDENT

T. G. PROCTER, ESQ.

TREASURER

J. M. LAY, ESQ.

COMMITTEE

R. M. MACDONALD	F. FLETCHER
R. W. HANNINGTON	FRED. STARKEY
JAS. JOHNSTONE	C. W. BUSK
JNO. DREW	

SECRETARY

HARRY WRIGHT, M. P. P.
NELSON, B. C.

