

**CIHM  
Microfiche  
Series  
(Monographs)**

**ICMH  
Collection de  
microfiches  
(monographies)**



**Canadian Institute for Historical Microreproductions / Institut canadien de microreproductions historiques**

**© 1998**

## Technical and Bibliographic Notes / Notes techniques et bibliographiques

The Institute has attempted to obtain the best original copy available for filming. Features of this copy which may be bibliographically unique, which may alter any of the images in the reproduction, or which may significantly change the usual method of filming are checked below.

- Coloured covers / Couverture de couleur
- Covers damaged / Couverture endommagée
- Covers restored and/or laminated / Couverture restaurée et/ou pelliculée
- Cover title missing / Le titre de couverture manque
- Coloured maps / Cartes géographiques en couleur
- Coloured ink (i.e. other than blue or black) / Encre de couleur (i.e. autre que bleue ou noire)
- Coloured plates and/or illustrations / Planches et/ou illustrations en couleur
- Bound with other material / Relié avec d'autres documents
- Only edition available / Seule édition disponible
- Tight binding may cause shadows or distortion along interior margin / La reliure serrée peut causer de l'ombre ou de la distorsion le long de la marge intérieure.
- Blank leaves added during restorations may appear within the text. Whenever possible, these have been omitted from filming / Il se peut que certaines pages blanches ajoutées lors d'une restauration apparaissent dans le texte, mais, lorsque cela était possible, ces pages n'ont pas été filmées.
- Additional comments / Commentaires supplémentaires:

L'Institut a microfilmé le meilleur exemplaire qu'il lui a été possible de se procurer. Les détails de cet exemplaire qui sont peut-être uniques du point de vue bibliographique, qui peuvent modifier une image reproduite, ou qui peuvent exiger une modification dans la méthode normale de filmage sont indiqués ci-dessous.

- Coloured pages / Pages de couleur
- Pages damaged / Pages endommagées
- Pages restored and/or laminated / Pages restaurées et/ou pelliculées
- Pages discoloured, stained or foxed / Pages décolorées, tachetées ou piquées
- Pages detached / Pages détachées
- Showthrough / Transparence
- Quality of print varies / Qualité inégale de l'impression
- Includes supplementary material / Comprend du matériel supplémentaire
- Pages wholly or partially obscured by errata slips, tissues, etc., have been refilmed to ensure the best possible image / Les pages totalement ou partiellement obscurcies par un feuillet d'errata, une pelure, etc., ont été filmées à nouveau de façon à obtenir la meilleure image possible.
- Opposing pages with varying colouration or discolorations are filmed twice to ensure the best possible image / Les pages s'opposant ayant des colorations variables ou des décolorations sont filmées deux fois afin d'obtenir la meilleure image possible.

This item is filmed at the reduction ratio checked below /  
Ce document est filmé au taux de réduction indiqué ci-dessous.

<b>10x</b>		<b>14x</b>		<b>18x</b>		<b>22x</b>		<b>26x</b>		<b>30x</b>	
<input type="checkbox"/>	<input type="checkbox"/>	<input type="checkbox"/>	<input type="checkbox"/>	<input type="checkbox"/>	<input type="checkbox"/>	<input type="checkbox"/>	<input checked="" type="checkbox"/>	<input type="checkbox"/>	<input type="checkbox"/>	<input type="checkbox"/>	<input type="checkbox"/>
	<b>12x</b>		<b>16x</b>		<b>20x</b>		<b>24x</b>		<b>28x</b>		<b>32x</b>

The copy filmed here has been reproduced thanks to the generosity of:

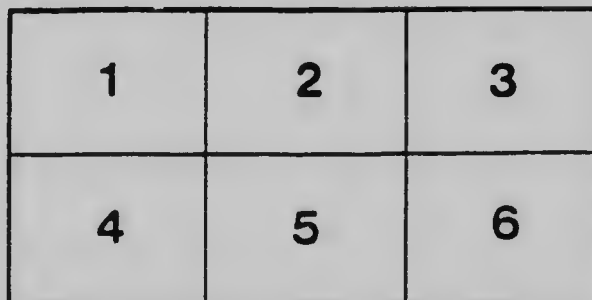
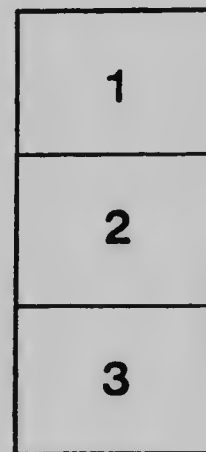
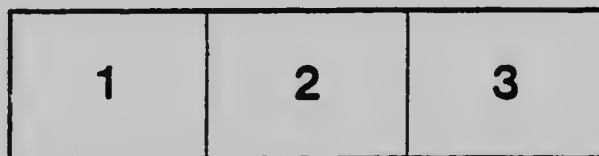
National Library of Canada

The images appearing here are the best quality possible considering the condition and legibility of the original copy and in keeping with the filming contract specifications.

Original copies in printed paper covers are filmed beginning with the front cover and ending on the last page with a printed or illustrated impression, or the back cover when appropriate. All other original copies are filmed beginning on the first page with a printed or illustrated impression, and ending on the last page with a printed or illustrated impression.

The last recorded frame on each microfiche shell contain the symbol  $\rightarrow$  (meaning "CONTINUED"), or the symbol  $\nabla$  (meaning "END"), whichever applies.

Maps, plates, charts, etc., may be filmed at different reduction ratios. Those too large to be entirely included in one exposure are filmed beginning in the upper left hand corner, left to right and top to bottom, as many frames as required. The following diagrams illustrate the method:



L'exemplaire filmé fut reproduit grâce à la générosité de:

Bibliothèque nationale du Canada

Les images suivantes ont été reproduites avec le plus grand soin, compte tenu de la condition et de la netteté de l'exemplaire filmé, et en conformité avec les conditions du contrat de filmage.

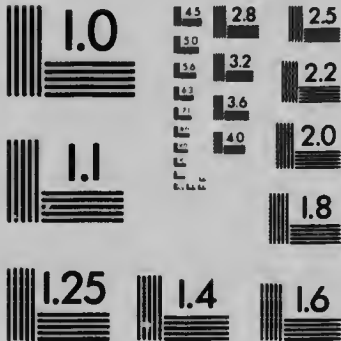
Les exemplaires originaux dont la couverture en papier est imprimée sont filmés en commençant par le premier plat et en terminant soit par la dernière page qui comporte une empreinte d'impression ou d'illustration, soit par le second plat, selon le cas. Tous les autres exemplaires originaux sont filmés en commençant par la première page qui comporte une empreinte d'impression ou d'illustration et en terminant par la dernière page qui comporte une telle empreinte.

Un des symboles suivants apparaîtra sur la dernière image de chaque microfiche, selon le cas: le symbole  $\rightarrow$  signifie "A SUIVRE", le symbole  $\nabla$  signifie "FIN".

Les cartes, planches, tableaux, etc., peuvent être filmés à des taux de réduction différents. Lorsque le document est trop grand pour être reproduit en un seul cliché, il est filmé à partir de l'angle supérieur gauche, de gauche à droite, et de haut en bas, en prenant le nombre d'images nécessaire. Les diagrammes suivants illustrent la méthode.

# MICROCOPY RESOLUTION TEST CHART

(ANSI and ISO TEST CHART No. 2)



**APPLIED IMAGE Inc**

1653 East Main Street  
Rochester, New York 14609 USA  
(716) 482 - 0300 - Phone  
(716) 288 - 5989 - Fax



O. H. M. S.

*W. J. Gerald*  
Deputy Minister.

---

---

LABORATORY  
OF THE  
INLAND REVENUE DEPARTMENT  
OTTAWA, CANADA.

—————  
BULLETIN No. 144  
—————

CONDENSED MILK

---

---

LABORATORY  
OF THE  
INLAND REVENUE DEPARTMENT  
OTTAWA, CANADA

BULLETIN No. 144.

CONDENSED MILK

OTTAWA, January 3, 1908.

W. J. GERALD, Esq.,  
Deputy Minister of Inland Revenue.

SIR,—I beg to hand you a report of work upon 142 samples of condensed milk collected in July and August of last year.

The numbers obtained from each Inspectoral district, are as follows:—

	Unsweetened.	Sweetened.
Nova Scotia. . . . .	2	3
Prince Edward Island. . . . .	1	3
New Brunswick. . . . .	3	"
Quebec. . . . .	11	"
St. Hyacinthe. . . . .	0	"
Montreal. . . . .	3	"
Ottawa. . . . .	5	5
Kingston. . . . .	6	10
Toronto. . . . .	3	7
London. . . . .	3	4
Manitoba. . . . .	5	10
Calgary. . . . .	6	10
British Columbia. . . . .	5	10
	47	95

A sample (No. 31173) of an Infant's food, was collected, by mistake, in the district of Prince Edward Island. In the Calgary district, two different brands, as mistaken duplicates, were obtained, under the number 28780.

Details of work done in this laboratory, are given in Tables I, II, and III. In Table IV an attempt is made to calculate the degree of condensation of the original milk, and the fat content of such milk.

The conclusions thus reached possess considerable interest; but they must not be taken as fully established, since the methods of calculation involve certain hypotheses as explained in the accompanying notes.

I may summarize the more important results of this investigation, as follows:—

1. Condensed milk, should mean the reduction of volume of normal milk, by evaporation of a greater or less portion of its water.

2. When sugar is added, this fact should be stated on the label: and preferably, if not necessarily, in the name of the article, as *Sugared* or *Sweetened* condensed milk.

3. The word *Cream*, is largely used to designate condensed milk. This is incorrect, and should be made illegal. As a matter of fact, these so-called "creams" are not any richer in milk fat than the sugared condensed milks, and many of them are distinctly poorer.

4. Among the samples examined, only one (No. 25628) is entitled to be called a cream.

5. The average milk value of most of these samples, shows them to be about 2·3 to 2·5 times the value of normal whole milk. Hence, a dilution to about two and a half (2·5) times their volume, results in converting them, for practical purposes, into milk.

The instructions for dilution printed upon the labels, are quite misleading in many cases. "For making a rich cream add from one to two parts pure water." The result would be a liquid containing about 3 to 4 per cent. of milk fat: and would be in no sense a "rich cream."

Several brands advise the addition of three parts water, to make "a pure rich, economical milk." Such a dilution would give a resultant containing about 2 per cent. of fat:—The sugared milks bear larger dilution, without evident reduction of "body"; but the fat content being practically identical with that of the non-sugared kinds, the product of dilution cannot be regarded as other than a very poor milk, thickened with sugar. One brand advises the addition of four (4) parts of water, to produce a rich milk. This would give an article containing distinctly less than 2 per cent. of milk fat.

It may be contended that the consumer should use his own judgment in diluting. While this is true, it is no justification of the manufacturer who states that the product will be "a rich milk," &c.

6. *Duplicates*, as collected by our inspectors, are always distinct, sealed packages. They do not necessarily represent the same batch, and even when they do so, it does not follow that they are strictly similar in composition. This matter has been considered exhaustively by the late Chief Analyst. (See Bulletin 69, page 20). "I am not convinced that *absolute* uniformity of product is attainable in any condensed milk factory." This conclusion was reached after very extended work done upon samples which had been manufactured under Mr. Macfarlane's direction, in five different factories, and with every attention to detail. The results now reported indicate that, while a general approximation to a type is found among samples bearing the same name, occasional deviations of considerable amount occur.

I beg to recommend the publication of this report as Bulletin No. 144.

I have the honour to be, Sir,  
Your obedient servant,

A. MCGILL,  
Chief Analyst.



## CONDENSED MILK.

This is generally understood to be *whole milk*, from which a more or less considerable portion of the water has been removed by evaporation.

No legal definition or standard for this article has been established in Canada.

In the United States, the following definitions were legally authorized in June, 1906.

1. *Condensed Milk, Evaporated Milk*, is milk from which a considerable portion of water has been evaporated, and contains not less than twenty-eight per cent of milk solids, of which not less than twenty-seven and five tenths (27.5) per cent is milk fat.

According to this definition, Condensed Milk should contain at least seven and seven tenths (7.7) per cent of milk fat.\*

2. *Sweetened Condensed Milk*, is milk from which a considerable portion of water has been evaporated, and to which sugar (sucrose) has been added, and contains not less than twenty eight (28) per cent of milk solids, of which not less than twenty seven and five tenths (27.5) per cent is milk fat.

3. *Condensed Skim milk*, is skim milk from which a considerable portion of water has been evaporated.

4. *Evaporated Cream, Clotted Cream*, is cream from which a considerable portion of water has been evaporated.

The same authority defines milk as containing a minimum of 3.25 per cent, and cream as containing a minimum of 18 per cent of milk fat.

To produce condensed milk of standard quality, as above defined, from milk of minimum standard quality, 2.37 lbs. of milk, are required for each 1 lb. of condensed milk;† that is, about 2.4 volumes will be concentrated into 1 volume, or the concentration will be 2.4. In order to make such a product represent normal milk, it is only necessary to add to it  $(2.4 - 1) = 1.4$  volumes of water. Of course, where richer milk is used, the product will be of a higher grade, for the same degree of concentration; or, conversely, a less concentration will give a standard condensed milk.

When sugar is added, it is evident that the concentration must proceed further in order to give a product containing the same weight percentage of fat. The accompanying tables show that samples of plain, concentrated milks, containing about eight per cent of fat, possess a mean density of about 1.075; while sugared samples, as found on the market, with about 8 per cent of fat, have a density of 1.310 to 1.320.

In table IV, an attempt has been made to calculate from analytical data, the volume concentration, and the fat content of the original milk. In order to this end, it is necessary to make certain assumptions, chief of which are the following:—

(a.) That the non-fat solids of milk are not increased or diminished by the processes of manufacture.

(b.) That the non-fat solids of the milk are known. (This table is calculated on a basis of 9 per cent., and also, of 8.5 per cent., for non-fat solids. In Bulletin 142 will be found reasons for adopting 8.5 as a minimum for non-fat solids. Better grades of milk, as found in Canada indicate 9 per cent. non-fat solids.)

(c.) That, where cane sugar has been added, the amount used is 40 per cent. of the weight of the finished product. \*\*

On account of the assumptions which it involves, this table must be regarded as approximately correct only. That its indications are not far removed from the truth is shown by their close correspondence with results derived from independent data. The concentration for non-sugared milks varies between 2.19 and 2.69; while it has been shown that, on the basis of the United States standard, this value, for minimum quality

$$* \frac{27.5}{100} \times 28 = 7.7.$$

$$† \text{ If } m \text{ parts by weight of milk, lose } w \text{ parts of water on concentration, the resultant concentrate will weigh } m - w; \text{ and } \frac{3.25m}{100} = \frac{7.7(m-w)}{100} \text{ Whence } (m-w) : m :: 3.25 : 7.7 = \frac{1}{2.37}$$

milk, would be about 2.4. Assuming 9 per cent for non-fat solids in the original milk, these extremes become 2.07 and 2.54. In the case of sugared milks, the concentration works out to from 2.43 volumes to 3.64 volumes, on the basis of 8.5 per cent non-fat solids.

The samples now reported (142 in number) are classified as *non-sweetened condensed milk* (Table II) and *sweetened condensed milk* (Table III).

A better name for the former class would be simply *Condensed milk*. But it happens that the sweetened variety was first placed upon the market, at least in large amount; † and the name *Condensed milk* carries with it, to most purchasers the idea of a sugared milk. Hence the term *Non-sweetened* or *plain* comes to be a more or less necessary distinction.

Many of the non-sugared milks now reported were sold as Cream; and one of them is distinctly named such on the label. With the single exception of a sample (No. 25628) obtained in Winnipeg, none of these are cream; and are, indeed, no richer in milk fat than most of the sugared milks. It is probable that the extensive use of the term *Creams* for this class of condensed milk, is due to its convenience as distinguishing them from the sweetened kinds; but such a use of the word cream should be made illegal, not only in the interest of the purchaser, but also in that of any manufacturer, who may wish to put a true cream on the market.

Owing to the absence of any legal standard for this class of goods, it is impossible to characterize the samples now reported, as genuine or otherwise. In Table II, the unsweetened milks are arranged alphabetically, according to the name of the brand; and in Table III, the sugared milks are treated in the same fashion.

It will be noted that, of nine (9) brands of unsweetened milk, only one reaches the United States standard of 7.7 per cent milk fat, (No. 25628, which contains 25.20 per cent of fat is a true cream; and cannot be classed with the other samples, which although sold under the name "Cream" are merely ordinary concentrated milks.)

Of nineteen (19) brands of sugared milks, only three fall distinctly below the 7.7 per cent standard for fat. One of these brands (Pheasant) contains only 5.10 per cent of fat; and is a condensed skim-milk.

Condensed milk was made the subject of inspection in 1897 (Bulletin No. 54), and in 1900 (Bulletin No. 69). Eighteen brands were represented in the collections made in 1897 and 1900. Of the 28 different brands, represented by the present collection, only eight bear names which appear in Bulletins 54 and 69. The following synopsis gives a comparison of results as found in 1900, with those recorded in the present report, for the eight brands which appear in both collections:—

NAME OF BRAND.	INSPECTION OF 1900.		PRESENT INSPECTION.	
	Samples.	Fat p.c.	Samples.	Fat p.c.
Clover .....	1	5.43	9	7.91
Eagle .....	23	8.78	12	8.00
Export .....	13	10.32	3	8.23
Jersey* .....	9	6.25	8	8.08
Mayflower .....	4	8.94	2	7.50
Nestle's .....	4	8.98	3	7.87
(owl) .....	13	9.38	2	7.68
Reindeer .....	15	9.25	20	8.61

\* In Bulletin 54 (January 1898) appear the results of analysis of 92 samples of condensed milk, in which the added sugar was determined, as closely as possible, and an average of about 40 per cent was found. The amount, however, varied from about 36 per cent to 43 per cent, and in one brand reached 47 per cent.

† Thus, of 16 brands examined in 1898, only 3 contained no sugar; while of 12 brands examined in 1900, only 2 brands contained no sugar.

\* From Bulletin 54, inspection of 1897.

In Tables II and III, it is apparent that a high degree of uniformity in milk-fat value characterizes the brands in which considerable numbers have been analysed. At the same time, occasional variation occurs; a matter not at all surprising when the conditions of manufacture are kept in mind. It makes it important however, to distinguish between results obtained from work upon a single sample, and those obtained from work upon a considerable number of samples. It is only when an average result, obtained by analyzing several samples, is presented that we are justified in accepting it as typical for the brand in question.

A. MCGILL, <sup>Ph.D.</sup>  
*Chief Analyst.*

TABLE II.—UNSWEETENED CONDENSED MILK

Name of Brand.	Sample.	Density.	Milk Solids.		
			Total.	Fat.	Non-Fat.
Anchor	33340	1.070	25.55	6.50	19.05
Carnation	32172	1.065	24.94	6.93	18.01
Dahl's	32166	1.063	11.63	6.77	4.80
Gold Reef	26028	0.967	31.94	25.20	6.74
Jersey	26440	1.070	27.93	7.47	20.46
"	26440	1.070	28.70	8.59	20.11
"	26268	1.075	27.23	8.59	18.64
"	20272	1.074	24.85	8.05	16.80
"	32173	1.063	30.34	7.92	22.42
"	32407	1.073	29.01	7.91	21.10
"	32415	1.076	25.61	7.94	17.67
"	34030	1.076	30.03	8.20	21.83
	Means.....	1.073	27.96	8.08	19.98
Peerless	25043	1.076	27.46	6.35	21.11
"	25646	1.078	27.46	6.36	21.11
"	26256	1.073	25.64	5.70	19.94
"	26259	1.072	25.65	5.98	19.67
"	26273	1.062	29.68	7.91	21.77
"	28769	1.074	27.23	6.65	20.58
"	28776	1.067	25.63	6.40	19.23
"	28780	1.075	25.83	6.93	18.90
"	30404	1.075	26.49	6.18	20.31
"	33336	1.070	25.65	6.13	19.52
"	34036	1.071	30.04	6.94	23.10
	Means.....	1.074	26.96	6.50	20.48
Reindeer Cream	26263	1.062	25.97	6.94	19.03
"	26271	1.061	29.00	7.34	21.66
"	26628	1.079	27.26	7.46	21.80
"	34038	1.061	29.11	7.04	23.07
	Means.....	1.061	28.33	7.20	21.13
St. Charles	26254	1.061	27.92	6.66	21.26
"	26267	1.061	29.30	7.20	22.10
"	26269	1.065	28.58	6.22	22.36
"	2627	1.074	26.93	6.58	20.35
"	28767	1.072	25.10	6.64	18.46
"	28771	1.070	25.23	6.95	18.28
"	28774	1.073	25.37	6.23	19.14
"	29526	1.067	25.01	7.44	17.57
"	30381	1.065	31.08	7.63	23.45
"	30380	1.075	24.48	7.16	17.32
"	32174	1.071	27.96	7.48	20.48
"	32803	1.078	29.34	7.50	21.64
"	33332	1.075	24.36	7.48	16.88
"	33404	1.070	28.43	6.75	21.68
"	34037	1.062	28.06	7.18	20.88
"	34040	1.070	25.86	8.49	17.37
	Means.....	1.071	27.06	7.10	19.96
Victor	29520	1.062	29.64	7.69	21.95
"	31171	1.076	28.05	6.41	21.64
"	32175	1.079	29.75	7.90	21.85
"	33405	1.061	29.67	7.70	21.97
	Means.....	1.060	29.28	7.43	21.85

TABLE III—SWEETENED CONDENSED MILK.

Name of Brand.	Number.	Density.	Solids.		
			Total.	Fat.	Difference.
Challenge .....	26257		69.12	7.60	61.52
" .....	32802		68.00	7.20	60.80
" .....	33333		69.57	7.32	62.25
	Means .....	1.30	68.90	7.37	61.53
Clover.....	092		71.60	8.15	63.45
" .....	20264		71.35	7.37	63.98
" .....	29533		69.82	8.35	61.47
" .....	32176		71.55	8.40	63.15
" .....	32479		72.50	7.87	64.63
" .....	32484		73.25	8.00	65.25
" .....	32812		71.92	8.12	63.80
" .....	33336		71.45	8.00	63.45
" .....	33403		72.60	7.95	64.65
	Means .....	1.32	71.78	7.91	63.87
Diploma.....	33339	1.32	73.07	8.92	64.15
Eagle .....	093		70.10	8.00	62.10
" .....	30378		70.45	8.67	61.78
" .....	30392		69.55	7.87	61.68
" .....	32171		68.05	7.57	60.48
" .....	32476		68.90	8.32	60.58
" .....	32477		66.05	7.75	58.30
" .....	32478		69.12	8.75	60.37
" .....	32482		70.51	7.82	62.69
" .....	32483		66.57	7.87	58.70
" .....	32804		68.87	7.50	61.37
" .....	33337		65.67	7.60	58.07
" .....	34033		68.60	8.25	60.35
	Means .....	1.31	68.50	8.00	60.50
Empire.....	32164	1.31	70.82	8.55	62.27
Export.....	25644		70.27	8.25	62.02
" .....	25645		69.12	7.70	61.42
" .....	32811		69.20	8.75	60.45
	Means .....	1.32	69.53	8.23	61.30
Express .....	29527		67.95	7.95	60.00
" .....	31172		69.44	7.90	61.54
	Means .....	1.31	68.69	7.93	60.76
Gold Seal.....	094		66.17	7.90	58.27
" .....	25033		69.10	7.20	61.90
" .....	25648		71.05	7.35	63.70
" .....	26262		70.05	7.70	62.35
" .....	28773		70.35	7.60	62.75
" .....	28779		68.72	7.25	61.47
" .....	28780		69.75	7.35	62.40
" .....	32162		70.02	7.50	62.52
" .....	32167		69.95	7.25	62.70
" .....	32808		68.82	7.25	61.57
" .....	34035		66.35	7.35	59.00
	Means .....	1.31	69.12	7.33	61.79

TABLE III—CONDENSED SWEETENED MILK—Continued

Name of Brand.	Number.	Density.	SOLIDS.		
			Total.	Fat.	Difference.
Good Luck.....	25642	.....	70.27	7.65	62.62
" .....	32810	.....	69.37	7.62	61.75
" .....	33334	.....	67.70	7.65	60.05
" .....	33402	.....	70.00	8.00	62.00
	Means .—	1.31	69.34	7.73	61.61
Lion.....	31170	1.31	67.35	7.62	59.73
Mayflower .....	29530	.....	70.97	7.29	63.68
" .....	32814	.....	69.62	7.72	61.90
	Means .....	1.31	70.30	7.50	62.80
Nestle.....	25632	.....	69.52	8.37	61.15
" .....	32480	.....	70.80	8.12	62.68
" .....	34031	.....	64.72	7.12	57.60
	Means .....	1.30	68.35	7.87	60.48

TABLE III.—SWEETENED CONDENSED MILK.

Name of Brand.	Number.	Density.	SOLIDS.		
			Total.	Fat.	Difference.
Oak.....	005	.....	70.65	8.42	62.23
".....	25631	.....	70.57	8.75	61.82
".....	25647	.....	71.84	8.00	63.84
".....	28775	.....	70.70	8.57	62.13
".....	31174	.....	72.27	9.12	63.15
".....	32170	.....	69.35	8.20	61.15
	Means.....	1.31	70.90	8.51	62.39
Owl.....	29525	.....	69.75	7.62	62.13
".....	32809	.....	73.30	7.75	65.55
	Means.....	1.33	71.53	7.68	63.85
Pheasant.....	32165	.....	69.16	5.32	63.84
".....	32169	.....	67.42	4.87	62.55
	Means.....	1.31	68.29	5.10	63.29
Purity..	29531	1.30	69.42	7.87	61.55
Reindeer	25634	.....	72.40	8.40	64.00
".....	26255	.....	74.12	8.88	65.24
".....	26258	.....	73.16	8.54	64.62
".....	26260	.....	73.40	8.62	64.88
".....	26265	.....	74.64	8.58	66.06
".....	28766	.....	71.64	8.30	63.34
".....	28768	.....	71.96	8.70	63.26
".....	28770	.....	72.64	8.58	64.06
".....	28772	.....	73.06	8.90	64.16
".....	28778	.....	73.84	8.94	64.90
".....	29524	.....	71.25	8.25	63.00
".....	30959	.....	74.36	8.44	65.92
".....	32163	.....	72.32	8.52	63.80
".....	32168	.....	73.18	8.60	64.58
".....	32806	.....	72.74	8.34	64.40
".....	32813	.....	72.18	8.60	63.58
".....	33331	.....	73.20	8.91	64.29
".....	33401	.....	67.14	8.32	58.82
".....	34032	.....	73.50	8.16	65.34
".....	34034	.....	72.00	9.80	62.20
	Means.....	1.32	72.63	8.61	64.02
Silver Cow.....	091	.....	71.35	7.95	63.40
".....	25630	.....	68.42	7.55	60.87
".....	26261	.....	70.70	7.75	62.95
".....	26266	.....	71.42	7.85	63.57
".....	28777	.....	69.00	7.45	61.55
".....	29532	.....	66.17	7.35	58.82
".....	30384	.....	72.95	7.72	65.23
".....	32481	.....	70.75	7.50	63.25
".....	32485	.....	72.62	8.22	64.40
".....	32806	.....	71.25	7.40	63.85
".....	33385	.....	69.12	7.35	61.77
	Means.....	1.31	70.34	7.64	62.70
Strathcona.....	32801	1.28	65.00	8.32	56.68

TABLE IV. APPROXIMATE CONCENTRATION, AND FAT CONTENT OF ORIGINAL MILK—CALCULATED.

Name of Brand.	Samples Examined.	Density.	SOLIDS.			Cane Sugar.	CONCENTRATION.		ORIGINAL FAT.	
			Total.	Fat.	Difference.		9 p.c.	8.5 p.c.	9 p.c.	8.5 p.c.
Anchor .....	1	1.070	25.55	6.50	19.05	-	2.20	2.30	3.07	2.90
Carnation .....	1	1.065	24.94	6.93	18.01	-	2.07	2.19	3.46	3.27
Dahl's .....	1	1.033	11.66	6.77	4.89	-	-	-	-	-
Gold Ref. ....	1	0.987	31.94	25.20	6.74	-	-	-	-	-
Jersey .....	8	1.076	27.96	8.08	19.88	-	2.20	2.40	3.66	3.45
Peerless .....	11	1.074	26.98	6.50	20.48	-	2.37	2.51	2.85	2.69
Reindeer Cream .....	4	1.081	28.33	7.20	21.13	-	2.46	2.61	3.07	2.90
St. Charles .....	16	1.071	27.06	7.10	19.96	-	2.31	2.45	3.20	3.02
Victor .....	4	1.080	29.25	7.43	21.85	-	2.54	2.69	3.06	2.90
Challenge .....	3	1.30	68.90	7.37	61.53	40.00	3.00	3.17	3.08	2.81
Clover .....	9	1.32	71.78	7.91	63.87	"	3.40	3.60	3.00	2.83
Diploma .....	1	1.32	73.07	8.92	64.15	"	3.44	3.64	3.33	3.14
Eagle .....	12	1.31	68.50	8.00	60.50	"	2.90	3.07	3.51	3.32
Empire .....	1	1.31	70.82	8.55	62.27	"	3.15	3.33	3.45	3.26
Export .....	3	1.32	69.53	8.23	61.30	"	.03	3.20	3.49	3.30
Express .....	2	1.31	68.69	7.93	60.76	"	2.93	3.10	3.44	3.26
Gold Seal .....	11	1.31	69.12	7.33	61.79	"	3.08	3.26	3.03	2.96
Good Luck .....	4	1.31	69.34	7.73	61.61	"	3.05	3.23	3.22	3.04
Lion .....	1	1.31	67.35	7.62	59.73	"	2.80	2.97	3.47	3.28
Mayflower .....	2	1.31	70.30	7.50	62.80	"	3.22	3.41	2.96	2.80
Nestle's .....	3	1.30	68.85	7.87	60.98	"	2.85	3.02	3.46	3.28
Oak .....	6	1.31	70.90	8.51	62.39	"	3.16	3.33	3.42	3.25
Owl .....	2	1.33	71.53	7.68	63.85	"	3.42	3.63	2.90	2.74
Pheasant .....	2	1.31	68.29	5.10	63.29	"	3.29	3.48	1.97	1.86
Purity .....	1	1.30	69.42	7.37	61.55	"	3.02	3.20	3.29	3.11
Reindeer .....	20	1.32	72.63	8.61	64.02	"	3.42	3.61	3.23	3.04
Silver Cow .....	11	1.31	70.34	7.64	62.70	"	3.21	3.41	3.03	2.96
Strathcona .....	1	1.28	65.00	8.32	56.68	"	2.30	2.43	4.48	4.23
	142									

The 'Concentration,' i.e. number of volumes of milk which are condensed into one volume and the 'Original Fat,' i.e. percentage of fat in the milk employed in manufacture, are found by the following formulas:—

Let  $c$  = Concentration.  
 "  $a$  = Non-fat solids as found.  
 "  $a^1$  = " in normal milk.  
 "  $s$  = Specific gravity of the sample.  
 "  $s^1$  = " normal milk.  
 "  $f$  = Fat, as found, per cent.  
 "  $f^1$  = " per cent in original milk used in manufacture.

Then  $c = \frac{as}{a^1 s^1}$  and  $f^1 = \frac{fa^1}{a}$

If we take  $s^1 = 1.03$  and  $a^1 = 9$ , these formulas become

$$c = \frac{as}{9.27} \quad f^1 = \frac{9f}{a}$$

If we take  $s^1 = 1.03$  and  $a^1 = 8.5$ , then the formulas become

$$c = \frac{as}{8.755} \quad f^1 = \frac{8.5f}{a}$$

These formulas have been used in calculating the numbers under the headings *Concentration* and *Original Fat*, in Table IV.



TABLE I.—RECORD OF FOOD SAMPLES OF CANNED MILK AND CREAM ANALYZED

Date of Collection.	Nature of Sample.	No of Sample.	Name and Address of Vendor.	Cost.		Name and Address of Manufacturer or Furnisher as given by Vendor.
				Quantity.	Cents.	
1907						
DISTRICT OF NOVA SCOTIA—						
Aug. 5.	Canned Milk...	33401	R. B. Adams, Duke St., Halifax, N. S.	3 tins.	45	Truro Condensed Milk Co., Truro, N.S.
"	"	33402	J. D. Stewart, Grafton St., Halifax, N. S.	"	30	St. Charles Condensing Co., St. Charles, Ill.
"	"	33403	Jas. Hogan, Prince St., Halifax, N. S.	"	36	Truro Condensed Milk Co., Truro, N.S.
"	Canned Cream...	33404	Larder, Hubley & Co., Barrington St., Halifax, N.S.	"	45	St. Charles Condensing Co., Ingersoll, Ont.
"	"	33405	Dillon Bros., Sackville St., Halifax, N. S.	"	30	Charlottetown Condensed Milk Co., Charlottetown, P.E.I.
DISTRICT OF PRINCE EDWARD ISLAND—						
July 30	Canned Milk...	31170	Sterns Bros., Souris....	3 tins.	45	Charlottetown Condensed Milk Co., Charlottetown
" 31	" Cream ..	31171	Pool & Thompson, Montague Bridge.	"	"	" "
Aug. 6	" Milk....	31172	P. McNutt & Son, Malpeque....	"	"	" "
.....	.....	31173	Jardine & Bernard, Kensington.	"	1.25	Henri Nestle, London...
" 8	" Milk....	31174	Sanderson & Co., Charlottetown.	"	45	Charlottetown Condensed Milk Co.
DISTRICT OF NEW BRUNSWICK—						
July 25	Canned Milk...	29524	Baird & Peters, Ward St., St. John, N. B.	3 tins.	45	Truro Condensed Milk Co., Ltd., Truro, N.S.
"	"	29525	Dearborn & Co., Prince William St., St. John, N. B.	"	"	Canada Milk Condensing Co., Antigonish Co., N.S.
"	Canned Cream ..	29526	W. A. Simonds, 89 Union St., St. John, N.B.	"	60	St. Charles Condensing Co., Ingersoll, Ont.
"	" Milk....	29527	The Geo. E. Barbour Co., Ltd., North Wharf, St. John, N.B.	"	36	Charlottetown Condensed Milk Co., Ltd., Charlottetown, P.E.I.
Aug. 6	" Cream..	29528	Sussex Mercantile Co., Ltd., Sussex, Kings Co., N. B.	"	48	Truro Condensed Milk and Canning Co., Truro, N.S.
" 7	" " ..	29529	W. G. Bell, 314 Main St., Moncton, N.B.	"	54	The Charlottetown Condensed Milk Co., Ltd., Charlottetown, P.E.I.
" 9	" Milk....	29530	J. B. Snowball & Co., Ltd., Chatham, N.B.	"	45	Truro Condensed Milk Co., Ltd., Truro, N.S.
" 20	" " ..	29531	Inches & Grimmer, St. Stephen, N.B.	"	"	St. Charles Condensing Co., Ingersoll, Ont.
" 21	" " ..	29532	Geo. T. Whelpley Estate, Queen St., Fredericton, N.B.	"	"	" "
" 23	" " ..	29533	W. S. Skillen, Main St., Woodstock, N.B.	"	"	Truro Condensed Milk Co., Truro, N.S.

AN THE LABORATORY OF THE INLAND REVENUE DEPARTMENT.

Inspector's Report	Name of Brand.	RESULTS OF ANALYSIS.							Remarks.
		Specific grav- ity at 15° C.	Water.	Total Solids.	Ash.	Fat.	Milk Sugar.	Loss to 500 C. C. warm water.	
		p. c.	p. c.	p. c.	p. c.	p. c.	p. c.	p. c.	

R. J. WAUGH, INSPECTOR.

"Reindeer Brand".....	Reindeer.....	1.2820	32.87	67.14	.....	8.32	.....	49.94	
"Good Luck Brand," Prepared at Ingersoll, Ont.	Good Luck.....	1.3080	30.00	70.00	.....	8.00	.....	53.67	
"Clover Brand," private mark, 2683.	Clover.....	1.3215	27.38	72.62	.....	7.95	.....	55.55	
Labeled St. Charles, un- sweetened, Evaporated Cream.	St. Charles.....	1.0767	71.56	28.43	1.24	6.75	11.49	.....	
"Victor Brand," Evapo- rated Cream.	Victor.....	1.081	70.33	29.67	1.65	7.70	11.15	.....	

T. MOORE INSPECTOR.

"Lion Brand," gua- anteed absolutely pure.	Lion.....	1.3080	32.65	67.35	.....	7.62	.....	49.25	
"Victor Brand," same as above, except Evapo- rated Cream instead of milk.	Victor.....	1.076	71.95	28.05	1.68	6.41	10.33	.....	
"Express Brand," same as above.	Express.....	1.3097	30.56	69.44	.....	7.92	.....	50.25	
Made with best cow's milk.	Nestlé's Food...	Nestlé's Milk Food..	.....	.....	.....	.....	.....	.....	Collected by mistake.
"Oak Brand," same as Lion Brand.	Oak.....	1.3072	27.73	72.27	.....	9.12	.....	51.92	

J. C. FERGUSON, INSPFCTOR.

"Reindeer Brand," trade mark, Reindeer Head.	Reindeer.....	1.3097	28.75	71.25	.....	8.25	.....	53.82	
"Owl Brand," Register- ed Trade Mark, Owl Head, guaranteed pure; marks 8, 4, 4.	Owl.....	1.3192	30.25	69.75	.....	7.62	.....	50.60	
Trade Mark, Cow, &c. Stencil Mark N O Es +	St. Charles.....	1.0670	74.99	25.01	1.37	7.44	10.61	.....	
"Express Brand," Train of Cars — Side, C. 58 on bottom of can, every can guaranteed.	Express.....	1.3046	32.05	67.95	.....	7.95	.....	50.00	
"Reindeer Brand," Trade Mark, Reindeer's Head, No. 731.	Reindeer Cream	1.0793	70.74	29.26	1.70	7.46	11.50	.....	
"Victor Brand," Guar- anteed.	Victor.....	1.0817	70.36	29.64	1.60	7.69	12.18	.....	
"Mayflower Brand," Guaranteed.	Mayflower.....	1.3105	29.03	70.97	.....	7.29	.....	52.27	
Condensed Milk, Trade Mark Registered (Cow) + 17E. Purity.	Purity..	1.3043	30.58	69.42	.....	7.87	.....	51.10	
Silver Cow, marks J. O. V +. Guaranteed.	Silver Cow.....	1.2970	33.83	66.17	.....	7.35	.....	49.37	
No. 2873 Clover Brand. Every can guaranteed.	Clover.....	1.3166	30.18	69.82	.....	8.35	.....	51.37	

TABLE I.—RECORD OF FOOD SAMPLES OF CANNED MILK AND CREAM ANALYZED

Date of Collection.	Nature of Sample.	No. of Sample.	Name and Address of Vendor.	Cost.		Name and Address of Manufacturer or Furnisher as given by Vendor.
				Quantity.	Cents.	
1907.						

## DISTRICT OF QUEBEC.—

July 22	Canned Cream..	26254	S. Charles Delage, 368 St. Joseph	3 tins.	45	St. Charles Evaporated Cream.
" 22	" Milk....	26255	Moise Pouilot, 367 St. Joseph...	3 "	45	Reindeer Brand Condensed Milk.
" 22	" Cream..	26256	S. A. Chabot, 271 St. Joseph....	3 "	45	Borden's, Ingersoll, Ont. ...
" 22	" Milk....	26257	" " " " " " " "	3 "	45	Bordens Condensed Milk Co., N. Y.
" 22	" " ....	26258	" " " " " " " "	3 "	45	Reindeer Condensed Milk.
" 22	" Cream..	26259	Charles S. Riverin, 55 de la Couronne.	3 "	60	Bordens Peerless Cream...
" 22	" Milk....	26260	" " " " " " " "	3 "	45	Reindeer Condensed Milk.
" 22	" " ....	26261	" " " " " " " "	3 "	45	St. Charles Condensing Milk.
" 22	" " ....	26262	" " " " " " " "	3 "	45	Bordens Condensed Milk, N. Y.
" 22	" Cream..	26263	Myrand S. Pouilot, 70 de la Couronne.	3 "	60	Reindeer Cream. ....
" 22	" Milk....	26264	" " " " " " " "	3 "	30	Clover Condensed Milk ...
" 22	" " ....	26265	" " " " " " " "	3 "	45	Reindeer Condensed Milk.
" 22	" " ....	26266	" " " " " " " "	3 "	45	Silver Cow Milk .....
" 22	" " ....	26267	" " " " " " " "	3 "	45	St. Charles Evaporated Cream.
" 23	" Cream..	26268	M. Boyce & Son, 21 Cote d'Abraham.	3 "	45	Jersey Cream Truro Condensed. " " " " " " " "
" 23	" " ..	26269	" " " " " " " "	3 "	45	St. Charles Evaporated Cream.
" 23	" " ..	26270	Isidore Voyer, 226 Richelieu ....	3 "	45	" " " " " " " "
" 23	" " ..	26271	M. W. Colman, 98 du Pont. ....	3 "	60	Reindeer Evaporated Cream
" 23	" " ..	26272	" " " " " " " "	3 "	60	Jersey Cream .....
" 23	" " ..	26273	O. Lacroix, 19 St. Joseph. ....	3 "	45	Bordens Peerless Evaporated Cream.

AT THE LABORATORY OF THE INLAND REVENUE DEPARTMENT—Continued.

Inspector's Report.	Name of Brand.	RESULTS OF ANALYSIS.						Remarks.	
		Specific grav- ity at 15° C.	Water.	Total Solids.	Ash.	Fat.	Milk Sugar.		Loss at 500 C. C. warm water.

E. BELAND, INSPECTOR.

.....	St. Charles.....	1.072	72.08	27.92	1.51	6.66	11.15	.....
.....	Reindeer. ....	1.3280	25.88	74.12	.....	8.88	.....	56.74
.....	Peerless ....	1.0730	74.36	25.64	1.68	5.70	10.74	.....
.....	Challenge.....	1.3023	30.88	69.12	.....	7.60	.....	51.97
.....	Reindeer. ....	1.3236	26.84	73.16	.....	8.54	.....	54.58
.....	Peerless ....	1.072	74.35	25.65	1.31	5.98	10.47	.....
.....	Reindeer. ....	1.3236	26.60	73.40	.....	8.52	.....	55.40
.....	Silver Cow.....	1.3097	29.30	70.70	.....	7.75	.....	54.00
.....	Gold Seal. ....	1.3105	29.95	70.05	.....	7.70	.....	51.92
Badly decomposed	Reindeer Cream.	1.0620	74.03	25.97	1.23	6.94	10.81	.....
.....	Clover.....	1.3106	28.65	71.35	.....	7.37	.....	54.32
.....	Reindeer. ....	1.3315	25.36	74.64	.....	8.58	.....	56.32
.....	Silver Cow.....	1.3105	25.58	74.42	.....	7.85	.....	51.52
.....	St. Charles.....	1.061	70.70	29.30	1.20	7.20	11.36	.....
No. on Box, 1354.	Jersey. ....	1.075	72.76	27.23	1.23	8.59	10.61	.....
.....	St. Charles. ....	1.0650	71.42	28.58	1.52	6.22	10.73	.....
.....	"	1.074	73.08	26.93	1.47	6.58	10.61	.....
No. on Box, 581	Reindeer Cream.	1.0611	71.00	29.00	1.74	7.34	11.70	.....
No. on Box, 1342.	Jersey. ....	1.074	75.15	24.85	1.60	8.05	11.08	.....
.....	Peerless. ....	1.0620	70.32	29.68	1.62	7.91	11.43	.....

TABLE I.—RECORD OF FOOD SAMPLES OF CANNED MILK AND CREAM ANALYZED

Date of Collection.	Nature of Sample.	No of Sample.	Name and Address of Vendor.	Cost.		Name and Address of Manufacturer or Furnisher as given by Vendor.
				Quantity.	Cents.	
1907.						
DISTRICT OF ST. HYACINTHE—						
Aug. 6	Canned milk...	91	MacRae Bros., Richmond .....	3 tins.	60	St. Charles Condensing Co., Ingersoll, Ont.
" 8	" .....	92	Kings' Mines' Stores, Thetford..	"	36	Truro Condensed Milk Co., Huntingdon, Que., and Truro, N.S.
" 9	" .....	93	Woodman & McKee, Coaticook ..	"	54	G. Borden, New York, U. S. A.
" 22	" .....	94	E. Goyette, Cowansville .....	"	45	Bordens Condensed Milk Co., Ingersoll, Ont.
" 27	" .....	95	W. Ducharme, Magog .....	"	60	Charlottetown Condensed Milk Co., Ltd., Charlotte-town.
DISTRICT OF MONTREAL—						
July 23	Canned milk...	32801	W. H. Scroggie, Ltd., St. Catharine, West.	3 tins.	30	.....
" 24	" .....	32802	H. Poirier, 27 St. Catharie, West	"	36	.....
" 24	Canned cream ..	32803	" .....	"	45	.....
" 24	Canned milk...	32804	Curric Bros., 113 Bleury .....	"	45	.....
" 24	" .....	32805	T. Elliott, 237 Bleury .....	"	45	.....
" 24	" .....	32806	C. Spector, 18 Ontario, E .....	"	45	.....
" 24	" .....	32807	Raymond Freres, 395 St. Lawrence.	"	45	.....
" 25	" .....	32808	Laporte, Martin & Cie, Ltd., St. Peter A.	"	32	.....
" 25	" .....	32899	" .....	"	35	.....
" 25	" .....	32810	" .....	"	27	.....
" 25	" .....	32811	" .....	"	35	Charlottetown C. M. Co. . .
" 25	" .....	32812	" .....	"	27	.....
Aug. 9	" .....	32813	Truro Condensed Milk Co., Huntingdon.	"	45	.....
" 9	" .....	32814	" .....	"	33	.....
" 9	" .....	32815	" .....	"	39	.....

## AT THE LABORATORY OF THE INLAND REVENUE DEPARTMENT—Continued.

Inspector's Report.	Name of Brand.	RESULTS OF ANALYSIS.							Remarks.
		Specific gravity at 15° C.	Water.	Total Solids.	Ash.	Fat.	Milk Sugar.	Loss to 500 C. C. warm water.	
		p. c.	p. c.	p. c.	p. c.	p. c.	p. c.	p. c.	

## J. C. ROULEAU, INSPECTOR.

Sliver Cow Brand.....	Silver Cow.....	1·3097	28·65	71·35	.....	7·96	.....	53·55	
.....	Clover.....	1·3097	28·40	71·60	.....	8·15	.....	50·65	
Tins stamped A.S.N. +	Eagle.....	1·3114	29·90	70·10	.....	8·00	.....	47·07	
.....	Gold Seal.....	1·3097	33·88	66·17	.....	7·90	.....	50·75	
.....	Oak.....	1·3037	29·35	70·65	.....	8·42	.....	53·10	

## J. J. COSTIGAN, INSPECTOR.

Strathcona Brand, marks A.S.Z. +	Strathcona.....	1·2820	35·00	65·00	.....	8·32	.....	45·50	
Challenge Brand, M. L. O. +	Challenge.....	1·3012	32·00	68·00	.....	7·20	.....	50·22	
St. Charles Brand.....	St. Charles.....	1·0776	70·70	29·34	1·74	7·50	10·67	.....	
Eagle Brand, N. I. N. +	Eagle.....	1·3158	31·13	68·87	.....	7·50	.....	50·57	
Reindeer Brand, 501....	Reindeer.....	1·3072	27·26	72·74	.....	8·34	.....	54·30	
Silver Cow Brand, S. O. V. +	Silver Cow.....	1·3097	28·75	71·25	.....	7·40	.....	54·45	
Jersey Cream Brand, 408	Jersey.....	1·073	70·99	29·01	1·45	7·01	11·97	.....	
Gold Seal Brand, N. E. S. +	Gold Seal.....	1·3023	31·18	68·82	.....	7·25	.....	50·80	
Owl Brand, 338.....	Owl.....	1·3448	26·70	73·30	.....	7·75	.....	55·05	
Good Luck Brand, S. N. J. +	Good Luck.....	1·3046	30·63	69·37	.....	7·62	.....	52·70	
Export Brand.....	Export.....	1·3192	30·80	69·20	.....	8·75	.....	52·55	
Clover Brand, 587....	Clover.....	1·3166	29·08	71·92	.....	8·12	.....	54·10	
Reindeer Brand, 598....	Reindeer.....	1·3114	27·82	72·18	.....	8·60	.....	51·84	
Mayflower Brand, 599....	Mayflower.....	1·3097	30·38	69·62	.....	7·72	.....	52·10	
Jersey Cream Brand, 528	Jersey.....	1·076	74·39	25·61	1·52	7·94	11·15	.....	

TABLE I.—RECORD OF FOOD SAMPLES OF CANNED MILK AND CREAM ANALYZED

Date of Collection.	Nature of Sample.	No. of Sample.	Name and Address of Vendor.	Cost.		Name and Address of Manufacturer or Furnisher as given by Vendor.
				Quantity.	Cents.	
1907.						
DISTRICT OF OTTAWA—						
July 29	Canned milk...	34031	Medical Hall, Hull. ....	3 tins.	60	National Drug and Chemical Co., Ottawa.
" 29	" ..	34032	" .....	3 "	45	" " ..
" 29	" ..	34033	Modern Drug Store, Hull. ....	3 "	55	Lyman Knox & Co., Montreal.
" 29	" ..	34034	" .....	3 "	45	" " ..
" 29	" ..	34035	Thos. Payment, Ottawa.....	3 "	75	Ottawa Drug Co., Ottawa.
" 30	Canned cream ..	34036	F. A. Scott & Son, Ottawa .. .	3 "	60	Borden Condensed Milk Co.
" 30	" ..	34037	Bate and Co., Ottawa.....	3 "	38	H. N. Bate & Son.....
" 31	" ..	34038	" .....	3 "	60	" .....
" 31	" ..	34039	A. L. Pinard, Ottawa.. .....	3 "	45	" .....
" 31	" ..	34040	T. Lindsay, Ltd., Ottawa.....	3 "	38	The St. Charles Condensing Co., Ingersoll, Ont.
DISTRICT OF KINGSTON—						
July 24	Canned milk....	32476	A. Glover, Earl St., Kingston...	3 tins.	45	Borden, Ingersoll, Ont....
" 24	" ..	32477	G. Mahood, Princess St., Kingston.	3 "	60	" ..
" 24	" ..	32478	J. Reddin, Princess St., Kingston.	3 "	60	" ..
" 24	" ..	32479	J. Crawford, Princess St., Kingston.	3 "	60	Clover, Truro.....
" 24	" ..	32480	J. B. McLeod, Princess St., Kingston.	3 "	1 00	Henri Nestle, Vevey, Switzerland.
" 24	" ..	32481	J. Kelly, Princess St., Kingston	3 "	45	St. Charles, Ingersoll.....
" 26	" ..	32482	Wallbridge & Clark, Belleville Front.	3 "	45	Borden, Ingersoll, Ont ....
" 26	" ..	32483	J. R. Harvey & Son, King St., Cobourg.	3 "	60	" .....
" 26	" ..	32484	" ..	3 "	45	Clover Brand, Truro .....
" 26	" ..	32485	A. J. Gould, King St., Cobourg.	3 "	45	St. Charles, Ingersoll.....

## AT THE LABORATORY OF THE INLAND REVENUE DEPARTMENT—Continued.

Inspector's Report.	Name of Brand.	RESULT OF ANALYSIS.						Remarks.
		Specific gravity at 15° C.	Water.	Total Solids.	Ash.	Fat.	Milk Sugar.	
			p. c.	p. c.	p. c.	p. c.	p. c.	

## J. A. RICKEY, INSPECTOR.

Nestle Brand. Mark x	Nestle. ....	1·2879	35·28	64·72	.....	7·12	.....	47·92	Milk was not in good condition.
Truro Condensed Milk Co., Truro, N.S., 449.	Reindeer... ..	1·3114	26·50	73·50	..	8·16	.....	55·24	
Eagle Brand, Borden Cond. Milk Co., N.Y. A O A +	Eagle .....	1·3029	31·40	68·60	.....	8·25	.....	49·95	
Reindeer Brand, Truro Cond. Milk Co., N.S., 449.	Reindeer.. ..	1·3149	28·00	72·00	.....	9·80	.....	51·00	
Borden Cond. Milk Co., Ingersoll. L O O +	Gold Seal... ..	1·2945	33·65	66·35	.....	7·35	.....	49·60	
Peerless Brand. S C T V +	Peerless .....	1·0707	69·96	30·04	1·70	6·94	12·45	.....	
St. Charles Brand. St. Charles Cond. Co., Ingersoll. S E T T +	St. Charles .....	1·082	71·94	28·06	1·69	7·18	11·15	.....	
Reindeer Brand, Truro Cond. Milk and Canning Co., Truro, N.S. 994.	Reindeer Cream.	1·0811	70·89	29·11	1·78	7·04	11·70	.....	
Truro Cond. Co. Cut of cow on front of tin, 187.	Jersey .....	1·0793	69·97	30·03	1·52	8·20	11·63	.....	
Cut of cow in gold on front of tin. N E O A +	St. Charles.. ..	1·070	74·14	25·86	1·03	8·49	11·29	.....	

## J. HOGAN, INSPECTOR.

Eagle Brand. ....	Eagle .....	1·2945	31·10	68·90	.....	8·32	.....	49·77
" .....	" .....	1·3114	33·95	66·05	.....	7·75	.....	48·92
" .....	" .....	1·3112	30·88	69·12	.....	8·75	.....	50·57
.....	Clover .....	1·3166	27·60	72·50	.....	7·87	.....	54·87
.....	Nestles. ....	1·3029	29·20	70·80	.....	8·12	.....	51·50
.....	Silver Cow .....	1·3060	29·25	70·75	.....	7·50	.....	53·52
.....	Eagle .....	1·3037	29·49	70·51	.....	7·82	.....	49·77
.....	" .....	1·3037	33·43	66·57	.....	7·87	.....	47·20
Clover Brand .....	Clover .....	1·3218	26·75	73·25	.....	8·00	.....	55·25
.....	Silver Cow .....	1·3149	27·38	72·62	.....	8·22	.....	54·02



TABLE I.—RECORD OF FOOD SAMPLES OF CANNED MILK AND CREAM ANALYZED

Date of Collection.	Nature of Sample.	No. of Sample.	Name and Address of Vendor.	COST.		Name and Address of Manufacturer or Furnisher as given by Vendor.
				Quantity.	Cents.	
1907.						

## DISTRICT OF TORONTO—

Aug. 9	Canned milk...	33331	Gibbons Bros., 742 Queen St. East, Toronto.	3 tins.	45	Truro Condensed Milk Co., Ltd., Truro, N.S.
" 9	Canned cream ..	33332	W. J. McCullough, West Toronto Junction.	3 "	45	St. Charles Cond. Co., Branch Factory, Ingersoll, Ont.
" 12	Canned milk...	33333	Jno. O. Carpenter, 10 Market Square, Hamilton.	3 "	30	Borden's Condensed Milk Co., Branch Factory, Ingersoll, Ont.
" 12	" ..	33334	Peters & Bonnsall, 347 Barton St. East, Hamilton.	3 "	30	St. Charles Condensing Co., Branch Factory, Ingersoll, Ont.
" 15	" ..	33335	F. A. Wilson, 33 Queen St., St. Catharines.	3 "	38	" " ..
" 15	" ..	33336	J. T. Feating, 11 St. Paul St., St. Catharines.	3 "	30	Truro Condensed Milk Co., Truro, N.S.
" 19	" ..	33337	Lisson & Co., Niagara Falls.	3 "	60	Borden's Condensed Milk Co., Branch Factory, Ingersoll, Ont.
" 21	Canned cream ..	33338	F. Guay, 318 Queen St. West, Toronto.	3 "	45	" " ..
" 21	Canned milk...	33339	John Butcher, 300 Queen St. West, Toronto.	3 "	23	Wills' United Dairies, made in England.
" 21	Canned cream ..	33340	Robt. Simpson Co., Ltd., Cor. Yonge and Queen Sts., Toronto	3 "	38	Prepared especially for Eby, Blain & Co., Ltd., Toronto, Sole Agents.

## DISTRICT OF LONDON—

July 26	Canned milk...	30378	Chas. Nairns, Goderich .....	3 tins.	45	Borden Condensed Co. ....
" 27	" ..	30381	Cardino Bros., Seaforth .....	3 "	45	A. M. Smith & Co., London
" 29	" ..	30384	A. Beattie & Co., Stratford.....	3 "	45	James Lumbers, Toronto...
" 29	Canned cream ..	30389	J. M. Adam, St. Marys.....	3 "	45	A. M. Smith & Co., London
" 30	Canned milk...	30392	Homer Robertson, Sarnia.....	5 "	75	Lyman Bros., Toronto ....
" 31	" ..	30399	G. Wineno, Sarnia.....	2 "	30	Vendor who bought from manufacturer in Truro, N.S.
Aug. 7	Canned cream ..	30404	Hugh Malcomson, Chatham....	3 "	45	Vendor.....

## DISTRICT OF MANITOBA—

Aug. 7	Canned cream ..	25628	Hudson Bay Co., Winnipeg.....	3 tins.	60	Stones Sons, London, Eng.
" 7	" ..	25629	" " .....	3 "	45	The Truro Cond. Milk Co., Truro, N.S.
" 7	Canned milk...	25630	" " .....	3 "	45	St. Charles Cond. Co., St. Charles, Ill., U.S.A.

## AT THE LABORATORY OF THE INLAND REVENUE DEPARTMENT—Continued

Inspector's Report.	Name of Brand.	RESULTS OF ANALYSIS.							Remarks.
		Specific Grav- ity at 15° C.	Water.	Total Solids.	Ash.	Fat.	Milk Sugar.	Loss to 500 C. C. warm water.	
		p. c.	p. c.	p. c.	p. c.	p. c.	p. c.	p. c.	

## H. J. DAGER, INSPECTOR.

Reindeer Brand 376 ...	Reindeer . . . . .	1·3183	26·80	73·20	...	8·91	...	54·78	
.....	St. Charles . . . . .	1·075	75·64	24·36	1·39	7·48	9·45	.....	
Challenge Brand, S S V +	Challenge . . . . .	1·3097	30·43	69·57	.....	7·32	.....	52·86	
Good Luck Brand, L J N +	Good Luck . . . . .	1·3097	32·30	67·70	.....	7·65	...	53·2	
Silver Cow Brand, A T T +	Silver Cow . . . . .	1·3012	30·88	69·12	.....	7·35	.....	51·87	
Clover Brand 507.	Clover . . . . .	1·3272	28·55	71·45	...	8·00	.....	56·50	
Eagle Brand, N J N +	Eagle . . . . .	1·3105	34·33	65·67	.....	7·60	.....	48·87	
Peerless Brand, N O T E +	Peerless . . . . .	1·0701	74·35	25·65	1·40	6·13	10·61	.....	
Diploma Brand . . . . .	Diploma . . . . .	1·3192	26·93	73·07	.....	8·92	.....	53·80	
Anchor Brand, N J N T +	Anchor . . . . .	1·070	74·45	25·55	1·08	6·51	10·47	.....	

## T. KIDD, INSPECTOR.

Eagle Brand . . . . .	Eagle . . . . .	1·3037	29·55	70·45	.....	8·67	.....	51·65	
.....	St. Charles . . . . .	1·0846	68·92	31·08	1·72	7·63	13·10	...	
Made in St. Charles, Ill.	Silver Cow . . . . .	1·3192	27·06	72·95	.....	7·72	.....	55·82	
Made by St. Charles Co., Ingersoll, Ont.	St. Charles . . . . .	1·075	75·52	24·48	1·60	7·16	10·62	.....	
Borden Cond. Milk Co., New York, U.S.A.	Eagle . . . . .	1·3114	30·45	69·55	.....	7·87	.....	51·07	
Reindeer Brand . . . . .	Reindeer . . . . .	1·3245	25·64	74·36	.....	8·44	.....	55·40	
Peerless Brand, Ingersoll, Ont.	Peerless . . . . .	1·0746	73·51	26·49	1·38	6·18	11·43	.....	

## A. C. LAFIVIERE, INSPECTOR.

.....	Gold Reef . . . . .	0·987	68·06	31·94	0·40	25·20	4·79	.....	
.....	Jersey . . . . .	1·0760	72·07	27·93	1·50	7·47	11·55	.....	
.....	Silver Cow . . . . .	1·3097	31·58	68·42	.....	7·55	.....	51·37	

TABLE I.—RECORD OF FOOD SAMPLES OF CANNED MILK AND CREAM ANALYZED

Date of Collection.	Nature of Sample.	No. of Sample.	Name and Address of Vendor.	COST.		Name and Address of Manufacturer or Furnisher as given by Vendor.
				Quantity.	Cents.	
1907.						

## DISTRICT OF MANITOBA.—

Aug. 7	Canned Milk . . .	25631	Hudson Bay Co., Winnipeg . . . .	3 tins.	45	Charlottetown Cond. Milk Co., Charlottetown, P.E.I.
" 7	" " . . . .	25632	" " . . . .	3 "	60	Henri Nestle, Vevey, Switzerland.
" 7	" " . . . .	25633	" " . . . .	3 "	45	Bordens Cond. Milk Co., New York.
" 7	" " . . . .	25634	" " . . . .	3 "	45	Truro Cond. Milk Co., Truro, N.S.
" 8	" " . . . .	25642	J. Robinson Co., Winnipeg . . . .	3 "	40	St. Charles Cond. Co., St. Charles, Ill., U.S.A. and Ingersoll, Ont.
" 8	Canned Cream . . .	25643	" " . . . .	3 "	45	Bordens Cond. Milk Co., N.Y.
" 9	" Milk . . . .	25644	Campbell Bros. & Wilson, Winnipeg.	3 "	35	Charlottetown Cond. Milk Co., Charlottetown, P.E.I.
" 9	" " . . . .	25645	Sutherland Bros., Winnipeg . . . .	3 "	45	" " . . . .
" 9	" Cream . . . .	25646	T. J. Davis, Winnipeg . . . . .	3 "	45	Bordens Cond. Milk Co., N.Y.
" 9	" Milk . . . .	25647	" " . . . . .	3 "	35	Charlottetown Cond. Milk Co., Charlottetown, P.E.I.
" 9	" " . . . .	25648	" " . . . . .	3 "	35	Bordens Cond. Milk Co., New York, U.S.A.
" 9	" Cream . . . .	25649	Laurie Bros. . . . .	3 "	40	Truro Cond. Milk Co., Truro, N.S.

## DISTRICT OF CALGARY.—

Aug. 17	Canned Milk . . .	28766	L. B. Cochran, Medicine Hat . . .	3 tins.	50	Truro Cond. Milk Co., Truro, N.S.
" 17	" Cream . . . .	28767	" " . . . .	3 "	45	St. Charles Cond. Co., St. Charles, Ill.
" 17	" Milk . . . .	28768	Leonard & Harris, Medicine Hat	3 "	50	Truro Cond. Milk Co., Truro, N.S.
" 17	" Cream . . . .	28769	" " . . . .	3 "	50	Bordens Cond. Milk Co., Ingersoll, Ont.
" 29	" Milk . . . .	28770	Revillon Bros., Edmonton . . . . .	3 "	50	Truro Cond. Milk Co., Truro, N.S.
" 29	" Cream . . . .	28771	" " . . . .	3 "	50	St. Charles Cond. Co., St. Charles, Ill.
" 29	" Milk . . . .	28772	The Acme Co., Ltd., Edmonton . . .	3 "	50	Truro Cond. Milk Co., Truro, N.S.
" 29	" " . . . .	28773	" " . . . .	3 "	50	Borden Cond. Milk Co., N.Y.
" 29	" Cream . . . .	28774	" " . . . .	3 "	50	St. Charles Cond. Co., St. Charles, Ill.
" 29	Canned milk . . . .	28775	A. McDonald, Edmonton . . . . .	3 tins.	50	Charlottetown Milk Co., Ltd., P.E.I.
" 29	Canned cream . . .	28776	" . . . . .	3 "	50	Borden Cond Milk Co., Ltd., New York, U.S.A.
" 29	Canned milk . . . .	28777	" . . . . .	3 "	50	St. Charles Cond. Co., Ltd., St. Charles, Ill.

## AT THE LABORATORY OF THE INLAND REVENUE DEPARTMENT—Continued.

Inspector's Report.	Name of Brand.	RESULTS OF ANALYSIS.						Remarks.	
		Specific gravity at 15° C.	Water.	Total Solids.	Ash.	Fat.	Milk Sugar.		Loss to 500 C. warm water.

## A. C. LARIVIERE, INSPECTOR—Continued.

.....	Oak.....	1·3037	29·43	70·57	.....	8·75	.....	52·00	
.....	Nestles.....	1·3166	30·48	69·52	.....	8·38	.....	49·62	
Prepared at Ingersoll, Ont.	Gold Seal.....	1·3080	30·90	69·10	.....	7·20	.....	51·47	
.....	Reindeer.....	1·3192	27·60	72·40	.....	8·40	.....	54·20	
.....	Good Luck.....	1·3080	29·73	70·27	.....	7·65	.....	53·20	
.....	Peerless.....	1·0758	72·54	27·46	1·62	6·35	10·26	.....	
.....	Export.....	1·3245	29·73	70·27	.....	8·25	.....	50·07	
.....	".....	1·3184	30·88	69·12	.....	7·70	.....	50·57	
.....	Peerless.....	1·0782	71·48	27·46	1·62	6·35	10·26	.....	
.....	Oak.....	1·3105	28·16	71·84	.....	8·00	.....	54·05	
Prepared at Ingersoll, Ont.	Gold Seal.....	1·3210	28·95	71·05	.....	7·35	.....	51·35	
.....	Jersey.....	1·070	71·30	28·70	1·49	8·59	11·15	.....	

## R. W. FLETCHER, INSPECTOR.

.....	Reindeer.....	1·3166	28·36	71·64	.....	8·30	.....	54·04	
.....	St. Charles.....	1·072	74·90	25·10	1·08	6·64	9·92	.....	
.....	Reindeer.....	1·3072	28·04	71·96	.....	8·70	.....	54·10	
.....	Peerless.....	1·0741	72·76	27·23	1·50	6·65	10·61	.....	
.....	Reindeer.....	1·3166	27·36	72·64	.....	8·58	.....	55·10	
.....	St. Charles.....	1·070	74·78	25·23	1·15	6·95	9·34	.....	
.....	Reindeer.....	1·3072	26·84	73·06	.....	8·90	.....	55·10	
.....	Gold Seal.....	1·3097	29·65	70·35	.....	7·60	.....	51·80	
.....	St. Charles.....	1·073	74·63	25·37	1·30	6·23	10·26	.....	
.....	Oak.....	1·3060	29·30	70·70	.....	8·57	.....	52·87	
.....	Peerless.....	1·067	74·38	25·63	1·45	6·40	10·13	.....	
.....	Silver Cow.....	1·3023	31·00	69·00	.....	7·45	.....	52·05	

TABLE I.—RECORD OF FOOD SAMPLES OF CANNED MILK AND CREAM ANALYZED

Date of Collection.	Nature of Sample.	No. of Sample.	Name and Address of Vendor.	Cost.		Name and Address of Manufacturer or Furnisher as given by Vendor.
				Quantity.	Cents.	
1907.						

## DISTRICT OF CALGARY—Con.—R. W

Aug. 29	"	28778	A. McDonald, Edmonton . . . . .	3 "	50	Truro Cond. Milk Co., Truro, N.S.
" 29	"	28779	" . . . . .	3 "	50	Borden's Cond. Milk Co., Ltd., New York.
" 29	"	28780	R. McKenzie & Co., Edmonton .	3 "	50	" " . . .

## DISTRICT OF BRITISH COLUMBIA—

Aug. 1	Canned milk . . .	32162	West End Grocery, New Westminster, B.C.	3 tins.	40	Borden's Cond. Milk Co., Ingersoll, Ont.
" 1	" . . .	32163	C. S. Hoffard, New Westminster, B.C.	3 "	40	Truro Cond. Milk Co., Ltd., Truro, N.S.
" 2	" . . .	32164	J. Wells & Co., Pender St., Vancouver.	3 "	30	Charlottetown Cond. Milk Co., Ltd., Charlottetown, P. E. I.
" 15	" . . .	32165	L. Rubinowitz, Steveston, B.C.	3 "	45	Canada Milk Cond. Co., Antigonish, N.S.
" 15	" . . .	32166	Marshall Smith, Ladner, B.C.	3 "	40	The Dahl Milk Co., Norway.
" 16	" . . .	32167	Currie & McWilliams, Westham Island, Fraser River.	3 "	45	Borden's Cond. Milk Co., Ingersoll, Ont.
" 16	" . . .	32168	Paul Swanson, B.N.A. Cannery, Westham Island, Fraser River.	3 "	45	Truro Cond. Milk Co., Ltd., Truro, N.S.
" 16	" . . .	32169	B.C. Packers Assoc., Canning, Canoe Pass, Fraser River.	3 "	45	Canada Milk Cond. Co., Antigonish, N.S.
" 17	" . . .	32170	Kyle & Son, Granville St., Vancouver, B.C.	3 "	40	Charlottetown Cond. Milk Co., Ltd., Charlottetown, P. E. I.
" 17	" . . .	32171	S. F. McCreedy, Granville St., Vancouver, B.C.	3 "	45	Borden's Cond. Milk Co., Ingersoll, Ont.
" 1	Canned cream . . .	32172	West End Grocery, New Westminster, B.C.	3 "	45	Pacific Coast Cond. Milk Co., Seattle, Wash.
" 1	" . . .	32173	C. E. Hoffard, New Westminster, B.C.	3 "	45	Truro Cond. Milk Co., Truro, N.S.
" 15	" . . .	32174	E. Hunt, Steveston, B.C.	3 "	40	St. Charles Cond. Co., Ingersoll, Ont.
" 19	" . . .	32175	Deal's Grocery, Cordova St., Vancouver.	3 "	30	Charlottetown Cond. Milk Co., Ltd., Charlottetown, P. E. I.
" 19	Canned milk . . .	32176	Webster Bros., Granville St., Vancouver.	3 "	30	Truro Cond. Milk Co., Ltd., Truro, N.S.

## AT THE LABORATORY OF THE INLAND REVENUE DEPARTMENT—Continued.

Inspector's Report.	Name of Brand.	RESULT OF ANALYSIS.						Remarks.
		Specific grav. ity at 15° C.	Water.	Total Solids.	Ash.	Fat.	Milk Sugar. ✓ Loss to 500 C. C. warm water.	
			p. c.	p. c.	p. c.	p. c.	p. c.	

## FLETCHER, INSPECTOR—Continued.

.....	Reindeer.....	1·3236	26·16	73·84	.....	8·94	.....	55·82	
.....	Gold Seal.....	1·3080	31·28	68·72	.....	7·25	.....	51·47	
.....	{ Gold Seal.....	1·3166	30·25	69·75	.....	7·35	.....	.....	
.....	{ Peerless.....	1·0750	74·17	25·83	1·54	6·93	10·40	.....	

## R. B. PARKINSON, INSPECTOR.

Gold Seal Brand, N J	Gold Seal.....	1·3072	29·98	70·02	.....	7·50	.....	51·97	
L +	Reindeer Brand, 2719...	Reindeer.....	1·3166	27·68	72·32	.....	8·52	.....	54·92
Empire Brand, 785.....	Empire.....	1·3070	29·18	70·82	.....	8·55	.....	52·05	
Pheasant Brand.....	Pheasant.....	1·3218	30·84	69·16	1·86	5·32	8·14	.....	Casein, &c., 8·24. Cane sugar by diff., 45·60.
No. on tin T 832.....	Dahl's.....	1·0325	83·34	11·66	0·70	2·50	6·77	.....	
Gold Seal Brand, N J	Gold Seal.....	1·3105	30·05	69·95	.....	7·25	.....	48·70	
O +	Reindeer Brand, 2722...	Reindeer.....	1·3236	26·82	73·18	.....	8·60	.....	55·62
Pheasant Brand.....	Pheasant.....	1·3131	32·58	67·42	1·86	4·87	7·73	.....	Casein, &c., 8·34. Cane sugar by diff., 44·62.
Oak Brand, 63.....	Oak.....	1·2978	30·65	69·35	.....	8·20	.....	47·30	
Eagle Brand, N E A +	Eagle.....	1·3029	31·95	68·05	.....	7·57	.....	50·25	
Carnation Brand, 763 5.	Carnation.....	1·0650	75·05	24·95	1·20	6·93	10·13	.....	
Jersey Brand, 1685.....	Jersey.....	1·083	69·66	30·34	1·22	7·92	10·81	.....	
St. Charles Brand, S V	St. Charles.....	1·071	72·04	27·96	1·85	7·48	10·47	.....	
L L +	Victor Brand, 452.....	Victor.....	1·079	70·25	29·75	1·75	7·90	10·95	.....
Clover Brand, 2018....	Clover.....	1·3114	28·45	71·55	.....	8·40	.....	53·20	

