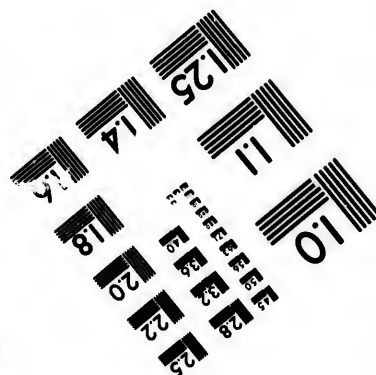
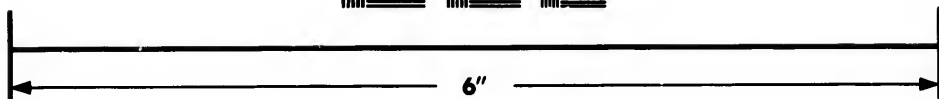
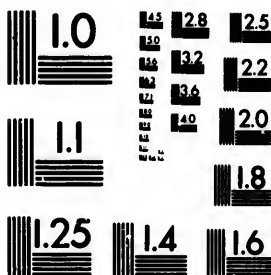


**IMAGE EVALUATION
TEST TARGET (MT-3)**



**Photographic
Sciences
Corporation**

23 WEST MAIN STREET
WEBSTER, N.Y. 14580
(716) 872-4503

18
20
22
25

**CIHM/ICMH
Microfiche
Series.**

**CIHM/ICMH
Collection de
microfiches.**



Canadian Institute for Historical Microreproductions / Institut canadien de microreproductions historiques

01
18
20
22
25

© 1982

Technical and Bibliographic Notes/Notes techniques et bibliographiques

The Institute has attempted to obtain the best original copy available for filming. Features of this copy which may be bibliographically unique, which may alter any of the images in the reproduction, or which may significantly change the usual method of filming, are checked below.

L'Institut a microfilmé le meilleur exemplaire qu'il lui a été possible de se procurer. Les détails de cet exemplaire qui sont peut-être uniques du point de vue bibliographique, qui peuvent modifier une image reproduite, ou qui peuvent exiger une modification dans la méthode normale de filmage sont indiqués ci-dessous.

- Coloured covers/
Couverture de couleur
- Covers damaged/
Couverture endommagée
- Covers restored and/or laminated/
Couverture restaurée et/ou pelliculée
- Cover title missing/
Le titre de couverture manque
- Coloured maps/
Cartes géographiques en couleur
- Coloured ink (i.e. other than blue or black)/
Encre de couleur (i.e. autre que bleue ou noire)
- Coloured plates and/or illustrations/
Planches et/ou illustrations en couleur
- Bound with other material/
Relié avec d'autres documents
- Tight binding may cause shadows or distortion along interior margin/
La reliure serrée peut causer de l'ombre ou de la distorsion le long de la marge intérieure
- Blank leaves added during restoration may appear within the text. Whenever possible, these have been omitted from filming/
Il se peut que certaines pages blanches ajoutées lors d'une restauration apparaissent dans le texte, mais, lorsque cela était possible, ces pages n'ont pas été filmées.
- Additional comments:/
Commentaires supplémentaires:

- Coloured pages/
Pages de couleur
- Pages damaged/
Pages endommagées
- Pages restored and/or laminated/
Pages restaurées et/ou pelliculées
- Pages discoloured, stained or foxed/
Pages décolorées, tachetées ou piquées
- Pages detached/
Pages détachées
- Showthrough/
Transparence
- Quality of print varies/
Qualité inégale de l'impression
- Includes supplementary material/
Comprend du matériel supplémentaire
- Only edition available/
Seule édition disponible
- Pages wholly or partially obscured by errata slips, tissues, etc., have been refilmed to ensure the best possible image/
Les pages totalement ou partiellement obscurcies par un feuillet d'errata, une pelure, etc., ont été filmées à nouveau de façon à obtenir la meilleure image possible.

This item is filmed at the reduction ratio checked below/
Ce document est filmé au taux de réduction indiqué ci-dessous.

10X	14X	18X	22X	26X	30X
<input type="checkbox"/>	<input type="checkbox"/>	<input type="checkbox"/>	<input checked="" type="checkbox"/>	<input type="checkbox"/>	<input type="checkbox"/>
12X	16X	20X	24X	28X	32X

The copy filmed here has been reproduced thanks to the generosity of:

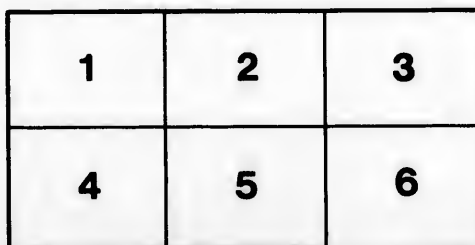
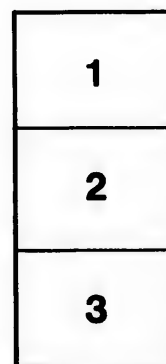
Library of the Public
Archives of Canada

The images appearing here are the best quality possible considering the condition and legibility of the original copy and in keeping with the filming contract specifications.

Original copies in printed paper covers are filmed beginning with the front cover and ending on the last page with a printed or illustrated impression, or the back cover when appropriate. All other original copies are filmed beginning on the first page with a printed or illustrated impression, and ending on the last page with a printed or illustrated impression.

The last recorded frame on each microfiche sheet will contain the symbol \rightarrow (meaning "CONTINUED"), or the symbol ∇ (meaning "END"), whichever applies.

Maps, plates, charts, etc., may be filmed at different reduction ratios. Those too large to be entirely included in one exposure are filmed beginning in the upper left hand corner, left to right and top to bottom, as many frames as required. The following diagrams illustrate the method:



L'exemplaire filmé fut reproduit grâce à la générosité de:

La bibliothèque des Archives
publiques du Canada

Les images suivantes ont été reproduites avec le plus grand soin, compte tenu de la condition et de la netteté de l'exemplaire filmé, et en conformité avec les conditions du contrat de filmage.

Les exemplaires originaux dont la couverture en papier est imprimée sont filmés en commençant par le premier plat et en terminant soit par la dernière page qui comporte une empreinte d'impression ou d'illustration, soit par le second plat, selon le cas. Tous les autres exemplaires originaux sont filmés en commençant par la première page qui comporte une empreinte d'impression ou d'illustration et en terminant par la dernière page qui comporte une telle empreinte.

Un des symboles suivants apparaîtra sur la dernière image de chaque microfiche, selon le cas: le symbole \rightarrow signifie "A SUIVRE", le symbole ∇ signifie "FIN".

Les cartes, planches, tableaux, etc., peuvent être filmés à des taux de réduction différents. Lorsque le document est trop grand pour être reproduit en un seul cliché, il est filmé à partir de l'angle supérieur gauche, de gauche à droite, et de haut en bas, en prenant le nombre d'images nécessaire. Les diagrammes suivants illustrent la méthode.

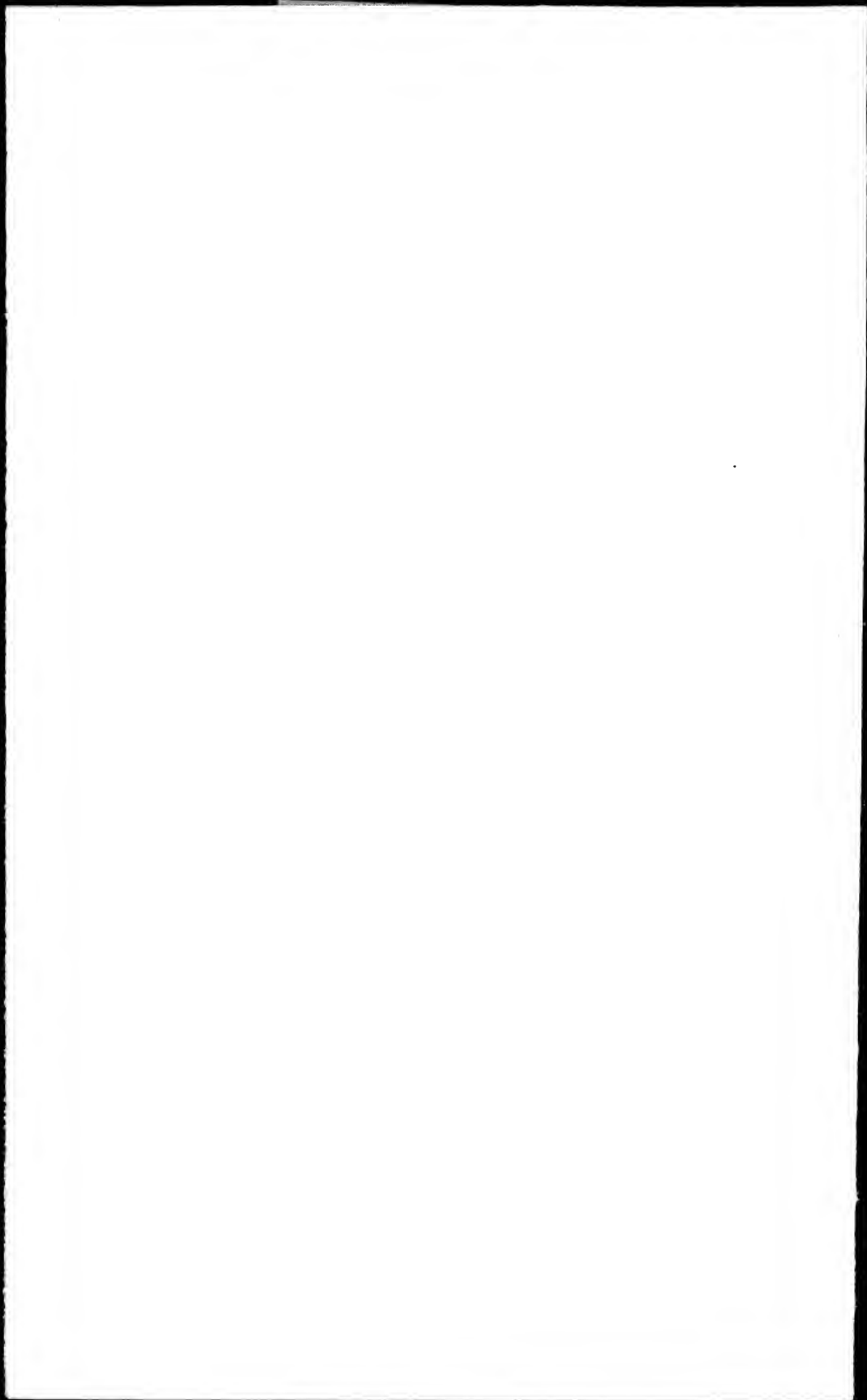
ire
détails
es du
modifier
er une
filmage

ées

re

y errata
ed to
nt
ne pelure,
çon à





THE ADMIRALTY LIST
OF THE
LIGHTS
ON THE
COASTS AND LAKES
OF
BRITISH NORTH AMERICA.

CORRECTED TO JANUARY 1864.

BY
EDWARD DUNSTERVILLE, COMMANDER R.N.

HYDROGRAPHIC OFFICE, ADMIRALTY.

LONDON :
PRINTED BY GEORGE E. EYRE AND WILLIAM SPOTTISWOODE,
PRINTERS TO THE QUEEN'S MOST EXCELLENT MAJESTY.
FOR HER MAJESTY'S STATIONERY OFFICE;
AND
SOLD BY J. D. POTTER, 31, POULTRY, AND 11, KING STREET, TOWER HILL.
1864.

Price One Shilling and Ninepence.

F. Fixed, o
FL. Flashin
B
F. & Fl. F
at
REV. Revol
int
as
INT. Interni
ecl
He
ALT. Altern
as

C. Ca
D. Di
Ord.

T

The distar

The C

**
**

B. Y. A.

Abbreviations and Explanations.

LIGHTS.

- F.** Fixed, or Steady.
- Fl.** Flashing. Showing five or more flashes and eclipses alternately in a minute, as North Ronaldsha, Buehanness, &c.
- F. & Fl.** Fixed light with a white or red flash in addition (preceded and followed by a short eclipse), at intervals of two, three, or four minutes, as Alpreck Point, Ile Vierge, &c.
- REV.** Revolving. Light gradually increasing to full effect and gradually decreasing to eclipse, at equal intervals of one, two, or three minutes, but occasionally as often as three times in a minute; as the Casquets, Cordouan, &c.
- INT.** Intermittent. Suddenly appearing in view, remaining visible for a certain time and then as suddenly eclipsed for a shorter time, as at Burnham in the Bristol Channel, Mull of Galloway, Barra Head, Tarbet-ness, &c.
- ALT.** Alternating. Red and white light alternately at equal intervals, without any intervening eclipse, as Pontalliac in the Gironde, &c.
-

ILLUMINATING APPARATUS.

- C.** Catoptric, or by metallic reflectors.
- D.** Dioptric, or by refracting lenses.
- Ord.** Order or class of apparatus, numbered from the first to the sixth Order.
-

N. North.—E. East.—S. South.—W. West.

The Bearings are all Magnetic, and are given from the Ship, not from the light.

Measurements are in English Feet, Yards, and Nautic Miles.

The distance the Lights are visible is calculated from a height of fifteen feet above the horizon at high water.

The Coloured Lights are specially noted by small CAPITALS in the Remark Column.

* * It is requested that any errors or omissions in this work may be pointed out, by letter, to the Secretary of the Admiralty.

No.	Name of Light.	Place.	Latitude. N.	Longitude. W.	Number of Lights, and Relative Positions.	Fixed, Flashing, Fix & Flash Int., Alt., Revolving.	Interval of Revolution or Flash.	Miles seen in clear Weather	Time Harbour Light is shown.
LABRADOR.									
1	BELLE ISLE, Straits of Belle Isle.	Extreme S. Point of Island.	51 53 0	53 22 15	1 - - -	F.	- - -	28	1
2	AMOUR POINT	S.E. side of Forteau Bay.	51 27 35	50 50 53	1 - - -	F.	- - -	18	2
NEWFOUNDLAND.									
3	OFFER WADHAM	On the Island.	49 35 40	53 45 0	1 - - -	F.	- - -	15	3
4	BONAVISTA.	On the Cape.	48 41 50	53 5 20	1 - - -	Rev.	Every ninety seconds.	18	4
5	Catalina Harbour, near entrance.	ON GREEN ISLAND.	48 30 15	53 2 40	1 - - -	F.	- - -	15	5
6	BACCALIEU ISLAND.	Half a mile from N. Part.	48 8 51	52 47 50	1 - - -	Fl.	Every ten seconds.	28	6
7	HARBOUR GRACE.	On the N. End of Island.	47 42 45	53 8 15	1 - - -	F.	- - -	18	7
8		On Point of Beach N. side.	47 41 23	53 12 33	2	Vertical, 11 yards apart.	F.	- - -	11
8 ^a	St. JOHN'S HAR- BOUR.	Fort Amherst, S. side of entrance.	47 33 54	52 40 18	1 - - -	F.	- - -	18	9
9		Upper light, 10' feet from N.E. corner of Congregational Chapel.	47 34 3	52 42 5	1 - - -	F.	- - -	0	10
10	CAPE SPEAR.	Lower light, on top of Custom House.	47 34 2	52 41 47	1 - - -	F.	- - -	0	11
11		On the Cape.	47 31 11	52 36 59	1 - - -	Rev.	Every minute.	21	12
12	FERRYLAND.	On the Cape.	47 0 58	52 51 7	- - - -	- - -	- - -	2	13
13	CAPE RACE.	On the Cape.	40 39 24	53 4 20	1 - - -	F.	- - -	10	14
14	CAPE PINE.	On the Cape.	46 37 4	53 31 45	1 - - -	Rev.	Every half minute.	3	15
15	CAPE ST. MARY.	On the Cape.	46 49 30	54 11 34	1 - - -	Rev.	Every minute.	3	16
16	BURIN ISLAND.	On Dodding Head.	47 0 26	55 8 43	1 - - -	Rev.	Every twenty seconds.	3	17
17	ST. PIERRE ISLAND.	GALANTRY HEAD.	46 46 3	56 9 7	1 - - -	Fl.	Flash every 20 seconds.	3	18
18		Canon Point, St. Pierre Harbour.	46 47 2	56 9 38	1 - - -	F.	- - -	-	19
19		N.W. of above 0,4' mile.	- - -	- - -	1 - - -	F.	- - -	-	20
20	FORTUNE BAY Brunet I.	Mercer Head.	47 15 10	55 52 45	1 - - -	- - -	- - -	-	21

From S.
down to
Sunset
from 1/2
to 1/2
to 1/2

22

All night from
1st of May to
15 December.

WITH THE GULF AND RIVER OF ST. LAWRENCE.

Interval of evolution or Flash.	Miles seen in clear Weather	No.	Time Harbour Light is shown.	Colour, or any Peculiarity of Lighthouse.	Height in feet, Centre of Lantern above High Water.	Height in feet of Building from Base to Vane.	Year lighted.	Character and Order of Illuminating Apparatus.	REMARKS.
LABRADOR.									
		28	1	<i>From 5 am down to 5 pm rapid in 15 min.</i> Circular Tower and Roof with White brick.	470	62	1858	D. 1st Ord.	<i>Signals will be given at the Lighthouse, and a gun will be fired during a fog. Varⁿ in 1864, 35° 30' W. Signal of gun is given here for ships wrecked on rocks.</i> Signals will be given by an Air or Fog Whistle. Nine pounder Gun when the Whistle is out of order. <i>a gun fired from every hour during fog.</i>
		18	2	<i>2 1/2</i> Circular Tower faced with White brick.	155	109	1858	D. 2nd Ord.	<i>Signals will be given by an Air or Fog Whistle. Nine pounder Gun when the Whistle is out of order. a gun fired from every hour during fog.</i>
NEWFOUNDLAND.									
		15	3	Circular Brick Tower.	96	-	1858	D.	
Every ninety seconds.		18	4	Square Tower with Vertical stripes Red and White.	150	30	1843	-	RED and WHITE alternately in every direction seaward. Kept open of Spillers Point it clears the Flowers rocks. Var ⁿ in 1864, 34° W.
		15	5	White. Roof Red.	92	-	1857	C. 4th Ord.	Visible between the bearing of W.S.W. seaward to N.E.
Every ten seconds.		28	6	Wood. Circular, Brick.	443	34	1858	C. 1st Ord.	When the S. part of the Island bears N.N.E. 1/2 E. within the distance of 8 miles, the Light is not visible, being obscured by the high land. The keeper's dwelling is White and the roof Red.
		18	7	Roof White and Red stripes, square wooden house.	151	35	1836	-	Visible between the bearings of N.N.E. to S.S.W. On the keeper's dwelling.
		11	8	Wood, White.	40	38	1853	-	Lighted by Gas. West leads in to clear the spit of 8 feet. Appears as a double light for 3 miles distant. Obscured by the Salvage on the bearing of W. 1/2 S.
		1	9	Stone square	114	30	1834	C. 4th Ord.	Visible seaward from W.S.W. to N.N.E. On the keeper's dwelling. When C. Spear or St. John's harbour is enveloped in fog, a gun is fired every hour during daylight.
		9	10	-	225	-	1863	-	RED lights. These two lights in one lead through the Narrows, N.W. 3/4 W. Variation in 1864, 32° W.
		0	11	-	50	-	1863	-	
Every minute.		21	12	Wood, Square Tower, Red and White Horizontal.	264	38	1835	-	Seen all round seaward.
		2	13	-	-	-	-	-	<i>Proposed.</i>
		3	14	Circular, S.E. face of Light-house striped Red and White, Vertical.	150	40	1856	C. 1st Ord.	Var ⁿ in 1864, 30° 10' W. A conical beacon stands 50 yards South from the Lighthouse, and the Telegraph station North 240 yards from the Lighthouse. Seen seaward E.N.E. to W.S.W.
Every half minute.		4	15	Circular, Red and White Bands.	314	50	1851	-	Seen from W. by S. to S.E. Variation in 1864 29° 40' W.
Every minute.		5	16	Circular, Brick.	390	40	1860	D. 1st Ord.	RED and WHITE alternately.
Every twenty seconds.		6	17	Circular.	430	25	1858	D. 1st Ord.	On the keeper's dwelling.
Flash every 20 seconds.		7	18	Nearly Square, White.	210	36	Rebuilt 1862.	D. 2nd Ord.	Red flash succeeded by two White ones. Two guns are fired at 3 minutes interval every two hours during fog, from 6 A.M. to 6 P.M. Obscured on the north by the bluffs of St. Pierre.
		8	19	Square, White.	36	-	-	C. 4th Ord.	These two lights kept in one N.W. lead mid-channel through the S. entrance, and indicate the best water between the Bertrand Rocks and Dog Island.
		9	20	Square, White.	64	-	1862	C. 4th Ord.	RED light, kept in sight to the left of Cape Eagle working into the N.E. passage, clears to the S. of Capo Rouge shoals. Var ⁿ 1864, 27° 40' W.
		10	21	-	-	-	-	-	<i>Building.</i>

No.	Name of Light.	Place.	Latitude. N.	Longitude. W.	Number of Lights, and Relative Positions.	Fixed, Flashing, Fix & Flash Int. Alt., Revolving.	Interval of Revolution or Flash.	Miles seen in clear Weather.	No.	Time Harbour Light is shown.
GULF AND RIVER OF ST.										
21	ST. PAUL ISLAND.	On a Rock 20 feet from the Island.	47 13 50	60 8 20	1 . . .	F	. . .	20	21	.
22		On the S.W. Point.	47 11 20	60 9 30	1 . . .	Rev.	Every minute.	20	22	.
23	MAGDALEN ISLAND.	Bird Rocks.	47 50 57	61 9 15	1	23	.
24	CAPE ROZIER.	On the Cape.	48 51 37	64 12 0	1 . . .	F.	. . .	16	24	.
25	ANTICOSTI ISLAND.	HEATH POINT.	40 5 20	61 41 48	1 . . .	F.	. . .	15	25	From April to 15th December
26		S.W. Point.	40 23 45	63 35 46	1 . . .	Rev.	Every minute.	15	26	.
27		Extreme W. Point.	40 52 30	64 32 0	1 . . .	F.	. . .	15	27	.
28	POINT DE MONTS.	About 1½ miles N.E. of the Point.	40 19 35	67 21 55	1 . . .	F.	. . .	15	28	.
29	Father Point, Rimousky.	On the Point.	48 31 25	68 27 18	1 . . .	F.	. . .	10	29	From 10th April to 10th December
30	BICQUETTE ISLAND.	Centre nearly.	48 25 18	68 53 20	1 . . .	Rev.	Every two minutes.	17	30	J.
31	RED ISLET.	Centre.	48 4 20	69 32 56	1 . . .	F.	. . .	12	31	J.
32	GREEN ISLAND	On the N. Point.	48 3 17	69 25 3	1 . . .	F.	. . .	13	32	From 15th April to 15th December
33	Brandy Pots.	42 fathoms from S.E. End of Islet.	47 52 30	69 40 35	1 . . .	F.	. . .	10	33	Do.
34	LONG PILGRIMS.	20 fathoms West of the centre of the Island, and 54 fathoms S. from water's edge.	47 43 15	69 45 0	1 . . .	F.	. . .	12	34	Do.
35	S. Traverse, Light Vessel.	N.E. part of St. Roque Shoals.	47 22 10	70 14 56	2 Main light 4 feet higher than the other.	F.	. . .	9	35	.
36	STONE PILLAR	50 fathoms from S. Point of the Islet.	47 12 25	70 21 36	1 . . .	Rev.	Every minute and half.	13	36	From 15th April to 15th December J.

Interval of revolution or Flash.	Miles seen in clear Weather.	No.	Time Harbour Light is shown.	Colour, or any Peculiarity of Lighthouse.	Height in feet, Centre of Lantern, above High Water.	Height in feet of Building from base to Vane.	Year lighted.	Character and Order of Illuminating Apparatus.	REMARKS.
	20	21		Octagonal. Wood White.	140	40	1839		Obscured between N. by E. & E.N.E.
Every minute.	20	22		Ditto.	140	40	1831		Bell sounded during a fog; and a Gun fired every four hours, commencing at 4 A.M. Visible on all bearings except between S.S.E. and West.
		23							Proposed. Var ⁿ in 1864, 202° W.
	16	24		Circular Tower faced with White fire brick.	130	112	1858	D. 1st Ord.	Var ⁿ in 1864, 25° 52' W. A gun is fired every hour during fog & snow storms
	15	25	From April to 15th December.	<i>clap boarded & painted white</i> Conical Grey Stone. <i>to</i> Circular tower	110	90	1835		The Lighthouse must be always kept open Southward of Cormorant Point. Visible from N.N.W. to N.E. by N. <i>Depos of provisions here for ship wrecked mariners</i>
Every minute.	15	26		Ditto.	100	75	1831		Seen from the bearing of N.N.W. round by the South to S.E. by E.
	15	27		<i>clap boarded & painted white</i> Circular Stone Tower faced with White fire brick.	112	109	1858	D. 2nd Ord.	A gun is fired every hour during fog & snow storms. <i>Depos of provisions here for ship wrecked mariners</i>
	15	28		Ditto.	100	75	1830		<i>Depos of provisions here for ship wrecked mariners</i>
	10	29	From 10th April to 10th December.	Octagonal, White.	43		1859		Visible from W. by S. & S. round Southerly to E. & N. Pilots stationed here.
Every two minutes.	17	30	<i>Do</i>	<i>Conical</i> Ditto.	112	65	1844		A Gun fired every hour during fog and snow storms from 1st April to 15th December. <i>half</i>
	12	31	<i>Do</i>	<i>to</i> Red.	75	51	1848		RED Light.
	13	32	From 16th April to 16th December.	<i>clap boarded & painted white</i> Stone, Square, White.	60	40	1800		A gun is fired here every half hour during fog & snow storms.
	10	33	Do.	<i>Painted white</i> Brick, clap boarded with iron.	78	39	1802	D. 4th Ord.	
	12	34	Do.	<i>Painted white</i> Circular, Brick, clap boarded with iron.	180	39	1862	D. 4th Ord.	
	9	35		Two Masts.			1830 altered 1860		
Every minute & half.	13	36	From 15th April to 15th December.	<i>to</i> Stone, Conical, White.	68	38	1843		

No	Name of Light.	Place	Latitude.		Longitude.		Number of Lights, and Relative Positions.	Fixed, Flashing, Fix & Flash or Revolving.	Interval of Revolution or Flash.	Miles seen in clear Weather.	No.	Time Harbour Light is shown	
			N.	W.	N.	W.							
RIVER ST. LAWRENCE.													
37	GRANDE ISLE KAMOURASKA.	120 fathoms from N.E. end of Island, 80 fathoms from water edge.	-	-	-	-	1 - - -	F.	-	-	37		
38	CRANE ISLAND	80 fathoms from W. point of Island.	-	-	-	-	1 - - -	F.	-	-	38		
39	BELLE CHASSE.	East end of Island.	-	-	-	-	1 - - -	F.	-	-	30		
40	St. Antoine.	S. shore.	46 59 43	71 36 10	-	-	1 - - -	F.	-	10	40		
41	St. Croix.	On S. shore near high-water mark, and of $\frac{1}{4}$ a mile N. of the Church.	46 37 45	71 44 10	-	-	1 - - -	F.	-	6	41		
42	Port Neuf.	On N. shore $\frac{1}{2}$ of a mile off the River.	46 41 48 N. Light.	71 52 10	-	-	2 S.W. and N.E. nearly 180 yards apart.	F.	-	5	42		
43	PLATON POINT.	On S. side, $1\frac{1}{2}$ miles below Richelieu Island.	46 39 13 N. Light.	71 53 3	-	-	2 S. 72 W. 169 yards apart.	F.	-	12	43		
44	Richelieu.	On centre of the Island.	46 38 24	71 54 51	-	-	1 - - -	F.	-	6	44		
45	Langlais Point.	On S. shore, half a mile below Great Chene River.	46 35 5	71 59 35	-	-	1 - - -	F.	-	5	45		
46	Cape Charles.	On the Cape.	46 35 39	72 4 15	-	-	2 N. 67 W. 80 yards apart.	F.	-	4	46		
47	Grondine.	On N. shore.	46 35 49	72 4 12	-	-	2 S. 66 W. 1350 yards apart.	F.	-	5 each.	47		
48	St. Pierre des Beccquets.	On S. shore summit of St. Pierre Point.	46 40 28	72 12 30	-	-	1 - - -	F.	-	5	48		
49	Batisseau.	N. shore, $1\frac{1}{2}$ miles be- low Batisseau Church.	46 39 16 S. Light.	72 14 52	-	-	2 S. 73 W. 2 yards apa.	F.	-	3	49		
50	Champlain.	N. shore, near Cham- plain Church.	46 26 34	72 20 32	-	-	1 - - -	F.	-	4	50		
51	Bigot Island.	-	-	-	-	-	-	-	-	-	51		
52	Cape Madeleine Lower Lights.	N. shore 3 miles below the Cape.	46 23 46 S. Light.	72 27 18	-	-	2 S. 60 W. 1 yards apart.	F.	-	4	52		
53	Cape Madeleine Upper Lights.	Ditto 2 miles below the Cape.	46 23 16 W. Light.	72 28 30	-	-	2 S. 85 W. 1 yards apart.	F.	-	6	53		
54	Port St. Francis.	S. shore.	46 16 20 W. Light.	72 37 15	-	-	2 S. 76 W. 3240 yards apart.	F.	-	3 each.	54		
55	POINT DU LAC.	N. shore.	46 16 50	72 40 22	-	-	1 - - -	F.	-	12	55		
56	ST. PETER'S LAKE.	East Light Vessel.	In Lake.	46 15 56	72 42 18	-	-	1 - - -	F.	-	6	56	
57		Centre Light Vessel.	S. S. E. 2 $\frac{1}{2}$ miles from Riviere du Loup.	46 11 39	72 53 20	-	-	1 - - -	F.	-	6	57	
58		Western Light Vessel.	N. side of Channel. N.E. by N. 3 miles from Flat Island.	46 9 39	72 56 50	-	-	1 - - -	F.	-	6	58	
59		Raisin.	On the Island.	46 6 14	72 57 50	-	-	1 - - -	F.	-	6	59	
60	Stone.	On the E. part of Island.	46 5 54	72 59 40	-	-	1 - - -	F.	-	6	60		
61	Valtrie.	E. side of Island.	45 52 55 S. Light.	73 16 0	-	-	2 S. 38 W. 320 yards apart.	F.	-	7	61		
62	Traverse.	2 $\frac{1}{2}$ miles above Con- trecoeur.	45 49 52 N. Light.	73 17 0	-	-	2 S. 28 W. 1500 yards apart.	F.	-	-	62		

All night while the navigation is open.

All night while the navigation is open.

Interval of
of
tion
dash.

Miles
seen in
clear
Weather.

No. Harbour Light is shown. Colour, or any Peculiarity of Light-house. Height in feet centre of Lantern above High Water. Height in feet of Building from Base to Vano. Year lighted. Character and Order of Illuminating Apparatus.

REMARKS.

RIVER ST. LAWRENCE.

*Both S^e one & pointed white
had lower lantern as on east of
house occupied by the keeper*

All night while the navigation is open.

All night while the navigation is open.

37	Wood.	166	39	-	-	C.
38	Wood.	44	37	-	-	C.
39	Wood.	70	30	-	-	C.
10	40	Wood, White.	90	-	1858	-
6	41	Wood, White.	30	20	1842	-
5	42	Upper one Square; the lower wood; both white.	200 120	-	1842	-
12	43	Wood, square, White.	152 130	24 7	1816 1824	-
6	44	Ditto.	27	-	1816	-
5	45	Ditto.	35	8	1844	-
4	46	Ditto.	110	20	1856	-
5 each.	47	Ditto.	50 & 25	30	1857	-
5	48	Ditto.	85	12	1844	-
3	49	Ditto.	39 20	31 11	1844	-
4	50	Ditto.	30	10	1844	-
4	52	Ditto.	53 33	13 10	1843	-
6	53	Ditto.	55 35	30 10	1843	-
3 each.	54	Ditto.	31 12	21 4	1850	-
12	55	Ditto.	71	24	1843	-
6	56	Red.	15	8	-	-
6	57	Ditto.	15	8	1816	-
6	58	Ditto.	15	8	1828	-
6	59	-	30	20	1843	-
6	60	Ditto.	30	-	-	-
7	61	Ditto.	21 13	17 9	1831	-
62	Wood, White.	-	-	-	1858	-

A small Light, to assist in keeping in the Channel for some distance, up and down the River.

These Lights in one lead up the Richelieu Channel to the Light on Richelieu Island.

These Lights lead up the Richelieu. Varⁿ in 1864, 1 1/4° W.

This Light and the Lights on Platon Point are very nearly in the same line of bearing, namely, N. 73° E.

To show the Bottom despondence & to avoid Bottom Cord in assisting point for Richelieu lead to go from Cap a la Roche & by the point sans such assisting point thro' the Richelieu to lead off Cap a la Roche to demand to indicate the widest part of Cap a la Roche.

To lead thro' demand & clear the Battery S^e again on the South Point on the north Varⁿ in 1864, 13° W. S^e lining point for lower point of Lake Bay of Champlain Proposed.

To clear Provenche Shoal.

To clear Bature Bigot. Varⁿ in 1864 13° 34' W.

These are very small Lights, only 4 feet square. They are removed every fall, and replaced in the following spring, to avoid the ice.

This Light in one with the Eastern Light vessel on lake leads up through the dredged channel. S. 70 W.

Shows the turn of the Channel at point dead end.

Removed at the approach of winter, on account of the ice, on South side of Pelite to avoid of passage dead end.

Ditto. To indicate the turn of the Channel leads to No 2.

Variation in 1864, 13° W. In connection with No. 1 a Cable bearing in line with No. 1, to arrive Batteries & formed a Cable indicates entrance to Channel leads to No. 1. leads Channel called Flat Islands

To lead into La Valtrie Channel & the Bouchard & indicates the true Channel to be kept in line till Lacarabia lights are brought to bear.

No.	Name of Light.	Place.	Latitude.		Longitude.		Number of Lights, and Relative Positions.	Fixed, Flashing, Fix & Flash Int., Alt., Revolving.	Interval of Revolution or Flash.	Miles seen in clear Weather.	No.	Time Harbour is open.
			N.	W.	N.	W.						
63	Plum Island.	- . . .	o	"	o	"	- . . .	- . . .	- . . .	- . . .	63	- . . .
64	Repentigny.	1/2 of a mile below Repentigny.	45 45 2	73 26 8	2	S. 22 W. 170 yards apart.	F.	- . . .	4	64	} All night, while the navigation is open.	
65	Bague.	On the Islet.	45 44 14	73 26 15	1	- . . .	F.	- . . .	4	65		
66	St. Therese.	On the Island.	45 41 22	73 27 40	2	S. 50 W. 220 yards apart.	F.	- . . .	4	66		
67	Point aux Trembles.	W. shore.	45 38 26	73 29 20	2	S. 46 W. 600 yards apart.	F.	- . . .	- . . .	67		
68	Montreal.	On the Wharf.	45 30 22	73 33 14	2	S. 41 W. 73 yards apart.	F.	- . . .	4	68		
69	Lachine.	On the Pier at the Entrance of Canal, S. Shore.	45 25 0	73 43 18	1	- . . .	F.	- . . .	6	69		
70	Lake St. Louis, Light Vessels.	1/2 mile above Lachine.	45 24 30	73 43 48	1	- . . .	F.	- . . .	6	70		
71		3 miles above Lachine.	- . . .	- . . .	1	- . . .	F.	- . . .	6	71		
72	Chateaugay, Light Vessel.	1 1/2 miles above Lachine.	45 24 0	73 49 18	2	- . . .	F.	- . . .	6	72		
73	Beauharnais.	Lower Entrance of Canal, S. Shore.	45 18 0	74 2 18	2	N. 61 E. 414 yards apart.	F.	- . . .	10	73		
74	Grosse Point.	Upper Entrance of Beauharnais Canal.	45 14 0	74 10 18	2	- . . .	F.	- . . .	8	74		
75	Off Grosse Point.	On Piers in the River.	- . . .	- . . .	2	- . . .	F.	- . . .	3 or 4	75		

LAKE ST. FRANCIS.

76	Coteau du lac.	N. Shore, at the head of the Rapids in the village.	45 16 52	74 11 45	1	- . . .	F.	- . . .	6	76	Ditt
77	Magee Point.	N. Shore.	45 11 30	74 27 0	1	- . . .	F.	- . . .	10	77	Ditt
78	Cherry Island.	S. Side of N. Channel.	45 5 0	74 49 0	1	- . . .	F.	- . . .	10	78	Se
79	Cherry, Light Vessel.	Above the Island.	- . . .	- . . .	1	- . . .	F.	- . . .	- . . .	79	Se
80	Lancaster Bar.	N. Side of Channel.	45 6 0	74 53 0	1	- . . .	F.	- . . .	8	80	Se

BETWEEN LAKE ST. FRANCIS AND LAKE ONTARIO.

81	Coles Shoal.	<i>for a pair of miles from N. end of Island</i>	- . . .	- . . .	1	- . . .	F.	- . . .	- . . .	81	Se
82	Grenadier Island.	<i>1/2 mile from N. end of Island</i>	- . . .	- . . .	1	- . . .	F.	- . . .	- . . .	82	Se
83	Lyndock Island.	<i>1/2 mile from N. end of Island</i>	- . . .	- . . .	1	- . . .	F.	- . . .	- . . .	83	Se
84	Gananoque Narrows.	<i>W. end of little Island, S. side of channel & mile below Gananoque</i>	- . . .	- . . .	1	- . . .	F.	- . . .	- . . .	84	Se
85	Jack Straw Shoal.	<i>1/2 mile from N. side of channel</i>	- . . .	- . . .	1	- . . .	F.	- . . .	- . . .	85	Se
86	Spectacle Shoal.	<i>1/2 mile from N. side of channel</i>	- . . .	- . . .	1	- . . .	F.	- . . .	- . . .	86	Se
87	Red Horse Rock.	<i>1/2 mile from N. side of channel</i>	- . . .	- . . .	1	- . . .	F.	- . . .	- . . .	87	Se
88	Burnt Island.	<i>1/2 mile from N. side of channel</i>	- . . .	- . . .	1	- . . .	F.	- . . .	- . . .	88	Se
89	Hemlock Point.	<i>1/2 mile from N. side of channel</i>	- . . .	- . . .	1	- . . .	F.	- . . .	- . . .	89	Se

1/2 mile from N. E. entrance point of Lake and 18 miles S. E. of Kingston

Interval of Revolution.	Miles seen in clear Weather.	No.	Time Harbour Light is shown.	Colour, or any Peculiarity of Lighthouse.	Height in feet, Centre of Lantern, above High Water.	Height in feet of Building from Base to Vane.	Year lighted.	Character and Order of Illuminating Apparatus.	REMARKS.	
-	-	63	-	-	-	-	-	-	<i>Proposed.</i>	
-	4	64	All night, while the navigation is open.	Wood, White.	30	26	1843	-	<i>To lead thro' the La Caze Channel to the Pointe au Lait on north shore of St. George.</i>	
-	4	65		Ditto.	24	16	1831	-	<i>To indicate the Canal being es. Pierre's Cove Lead.</i>	
-	4	66		Ditto.	-	-	-	-	<i>Varⁿ in 1864, 12° W. leads to entrance thro' the narrow channel up to above</i>	
-	-	67		One in a house the other on a beacon.	-	-	53	1846	-	<i>To lead thro' the channel between Pointe au Lait and the narrow one up to above Pointe</i>
-	4	68		Wood, Red.	38	31	1830	-	-	<i>RED Light. Varⁿ in 1864, 111° W. Indicates</i>
-	6	69		Square, Wood, White.	23	17	1849	-	-	<i>depths & channel led from the Bar on</i>
-	6	70		Circular, of Iron, Red.	-	-	-	1840	-	-
-	6	71			Red.	20	-	-	-	-
-	6	72			Red.	20	-	-	1840	-
-	10	73			Wood, Square Frames.	-	-	-	1850	-
-	8	74	Square, Wood.	20	20	1845	1850	-	<i>To be kept in one, when leaving the canal, till the upper lights come in one.</i>	
-	3 or 4	75	Square, Wood, Red.	-	-	-	1850	-	-	

LAKE ST. FRANCIS.

-	6	76	Ditto.	On top of a house.	20	14	1848	-	-
-	10	77	Ditto.	Square, Wood.	30	24	-	-	<i>Midway between Cotcan and Cherry Island.</i>
-	10	78	<i>Ditto</i>	Ditto.	40	30	1847	-	-
-	-	79	<i>Ditto</i>	-	-	-	1849	-	<i>Opposite the Light there is a Beacon, N. of the Channel.</i>
-	8	80	<i>Ditto</i>	Ditto.	20	20	1844	-	<i>on a Pier 4 miles SW from Lancaster Village</i>

BETWEEN LAKE ST. FRANCIS AND LAKE ONTARIO.

-	-	81	<i>Ditto</i>	White, Square, of Wood.	-	-	1856	C.	<i>5 miles W of Brockville</i>
-	-	82	<i>Ditto</i>	Ditto.	-	-	1856	C.	
-	-	83	<i>Ditto</i>	Ditto.	-	-	1856	C.	
-	-	84	<i>Ditto</i>	Ditto.	-	-	1856	C.	
-	-	85	<i>Ditto</i>	Ditto.	-	-	1856	C.	
-	-	86	<i>Ditto</i>	Ditto.	-	-	1856	C.	
-	-	87	<i>Ditto</i>	Ditto.	-	-	1856	C.	
-	-	88	<i>Ditto</i>	Ditto.	-	-	1856	C.	
-	-	89	<i>Ditto</i>	Ditto.	-	-	1856	C.	

Position unknown.

These small Lights are for the purpose of marking out the Channel through the Thousand Islands between Brockville and Kingston.

No.	Name of Light.	Place.	Latitude.		Longitude.		Number of Lights, and Relative Positions.	Fixed, Flashing, Fix & Flash Int., Alt., Revolving.	Interval of Revolution or Flash.	Miles seen in clear Weather.	No.	Time Harbour is show
			N.	W.	N.	W.						
LAKE ONTARIO.												
90	Kingston.	S.E. part of Town.	44 13 30	76 29 0	1	-	-	F.	-	4	90	-
91	Snake Island.	<i>on a pin on the N. side of Edamuel's mile W of Kingston.</i>	44 11 30	76 33 0	1	-	-	F.	-	6	91	-
92	GAGE or SIMCOE.	<i>N</i> Port Yeo S.W. point of Snake Island, 9 miles W of Kingston	44 9 0	76 33 0	1	-	-	F.	-	15	92	-
93	OUTER DRAKE.	E. point of Island.	43 57 0	76 49 0	1	-	-	F.	-	22	93	-
94	PETER POINT.	On the Point.	43 51 0	77 8 30	1	-	-	Rev.	Every minute and forty seconds.	21	94	-
95	Scotch Bonnet or Egg Island.	<i>on a small island, 1/2 mile SW of Nicholson Island.</i>	43 54 0	77 33 0	1	-	-	F.	-	-	95	-
96	PRESQU' ISLE	E. Point.	44 1 0	77 41 0	1	-	-	F.	-	18	96	-
97		On a hill in shore.	44 0 0	77 42 0	2	W.S.W. and E.N.E. nearly.	F.	-	3 or 4	97	-	
98	Coburg.	Pier head.	43 57 0	78 9 0	1	-	-	F.	-	8	98	-
99	Peter Rock or Gull Island.	W. by S., 4 miles from Cobourg.	43 56 30	78 13 0	1	-	-	F.	-	10	99	-
100	Port Hope.	Pier Head, E. side.	43 56 15	78 15 0	1	-	-	F.	-	4	100	-
101	Darlington.	Pier Head.	43 52 30	78 38 30	1	-	-	F.	-	4	101	-
102	Oshawa Port.	Pier head.	43 52 0	78 47 0	1	-	-	F.	-	-	102	-
103	Whitby Harbour.	W. Pier.	43 51 0	78 57 0	1	-	-	F.	-	5	103	-
104	Pickering or Liver- pool.	E. Pier Head.	43 48 45	79 2 0	1	-	-	I.	-	-	104	-
105	TORONTO.	GIBRALTAR POINT. <i>SW side of front 3 miles S of Toronto</i>	43 37 0	79 23 30	1	-	-	F.	-	18	105	-
106		Queen's Wharf, west- ern part; the other on Arm of Pier.	43 38 30	79 24 0	1	-	-	F.	-	6	106	-
107	Credit Port.	On the Pier.	43 33 30	79 35 0	1	-	-	F.	-	-	107	-
108	OAKVILLE.	Pier Head.	43 26 45	79 40 30	1	-	-	F.	-	12	108	-
109	BURLINGTON BAY.	S. Pier of Entrance.	43 18 0	79 43 30	2	-	-	F.	-	15 4	109	-
110	Dalhousie Harbour	E. Pier Head.	43 13 30	79 15 30	1	-	-	Rev.	-	10	110	-

All night, while the Navigation is open.

No.	Time Harbour Light is shown.	Colour, or any Peculiarity of Lighthouse.	Height in feet, Centre of Lantern, above High Water.	Height in feet of Building from Base to Vane.	Year lighted.	Character and Order of Illuminating Apparatus.	REMARKS.
-----	------------------------------------	---	--	---	------------------	---	----------

LAKE ONTARIO.

4		Square, Wood, White.			1844		Not lighted.	
6		Stone, Square.	35	33	1858	—	RED Light.	
15		Round, Stone.	45	40	1833	—		
22		Ditto.	68	62	1828	—		
21		Ditto.	62	60	1833	—		
		Stone.	51	54	1856	C.		
18	All night, while the Navigation is open.	Octagon, Stone.	67	63	1840	—		
3 or 4					1851	—		
8		Square, Wood, White.	20	16	1844	—		
10		Octagon, Stone.	45	48	1840	—		
4		—	—	—	—	—	On a rock, one and a half miles off shore.	
4		On a Stone House.	—	—	—	—	RED, facing South. WHITE, „ East and West.	
						1863	—	
5		Square, Wood.	12	8	1844	—		
						1863	—	
18		Hexagonal, Stone.	66	62	1820	—		
6	Wood, Square, Red.	22	16	1838	—	To be passed closely, on the Port hand. RED Light is on the arm of the pier and the innermost.		
					1863	—		
12	Octagon, Wood.	42	36	1836	—	<i>Green Light & Hoop 2</i> High Light RED.		
15 4	One White, One Red, Square, Octagon.	60 18	54 14	1838 1845	—	Entrance to Welland Canal.		
10	Wood.	20	20	1852	—			

No.	Name of Light.	Place.	Latitude.	Longitude.	Number of Lights, and Relative Positions.	Fixed, Flashing, Fix & Flash Int., Alt., Revolving.	Interval of Revolution or Flash.	Miles seen in clear Weather.
			N.	W.				

LAKE ERIE.

111	PORT COLBORNE	W. Pier Head.	42 53 30	79 17 0	1	F.		12
112	Mohawk Island.	<i>on an Island between Ports Colborne & Maitland S.W. of main shore</i>	42 50 40	79 35 0	1	Rev.	Every Three minutes.	10
113	Port Maitland.	W. Pier.	42 52 0	79 37 45	1	F.		10
114	Port Dover.	W. Pier.	42 47 30	80 13 0	1	F.		8
115	LONG POINT.	E. Extremity.	42 33 0	80 5 30	1	F.		25
116	Big Otter Creek, or Port Burwell.	333 yards in shore.	42 30 0	80 40 30	1	F.		12
117	Catfish Creek or Port Bruce.	-	42 40 0	81 1 0	1	F.		
118	Port Stanley.	Extreme of W. Pier.	42 40 0	81 12 30	1	F.		4
119	Pelée Island.	N.E. Point.	41 50 0	82 37 30	1	F.		0
120	Pelée Spit.	<i>on Caisson 2 1/2 miles S.W. from extreme end of point from South Shore.</i>	41 52 0	82 29 30	1	F.		

DETROIT RIVER.

121	AMHERSTBURGH.	S. Point of Bois Blanc Island.	42 5 0	83 6 30	1	F.		18
-----	---------------	--------------------------------	--------	---------	---	----	--	----

LAKE ST. CLAIR.

122	River Thames.	Mouth of River, S. Shore.	42 18 0	82 30 0	2	S. 26 E. 450 yards.	F.	12 6
-----	---------------	---------------------------	---------	---------	---	---------------------	----	------

LAKE HURON.

123	GODERICH.	On high bank, S.E. of N. Pier of the Harbour. One on the Pier.	43 45 0	81 32 30	2		F.	25
124	Point Clark.	<i>On the Point N. shore about 1/2 mile N.E. from Goderich</i>	44 4 20	81 34 20	1		Rev.	10
125	Chantry Island.	<i>On the Island, S. side about 1/2 mile N.E. from Goderich</i>	44 29 40	81 13 50	1		F.	10
126	Isle of Coves.	<i>Big Point, on N.E. point of island at entrance to Georgian Bay</i>	45 19 50	81 32 20	1		Fl.	10
127	Griffith Island.	<i>On the Island, N.E. end</i>	44 40 45	80 43 2	1		F.	12
128	Nottawasaga Island.	<i>On island 20 miles from Owen Sound</i>	44 32 30	80 8 0	1		Rev.	10
129	Christian Island.	<i>W. side of island from Collice Island</i>	44 47 0	79 57 30	1		F.	8
130	Collingwood.	<i>On breakwater pier</i>	44 51 0	80 2 0	1		F.	

All night, while the Navigation is open.

Ditto

Ditto

No.	Time Harbour Light is shown.	Colour, or any Peculiarity of Lighthouse.	Height in feet, Centre of Lantern, above High Water.	Height in feet of Building from Base to Vane.	Year lighted.	Character and Order of Illuminating Apparatus.	REMARKS.
-----	------------------------------------	---	--	---	------------------	---	----------

LAKE ERIE.

12	111	All night, while the Navigation is open.	Wood.	{ 50 14	{ 54 10	1852	- . -	Entrance to the Welland Canal.
10	112		Round, Stone.	64	60	1848	-	Variation in 1864, 1° 29' W.
10	113		Square, Wood, White.	-	-	1848	- . -	Grand River Entrance.
8	114		Ditto.	20	20	1840	-	
25	115		Octagon, Wood.	65	60	1843	-	
12	110		Octagon, Wood.	96	46	1840	-	
-	117		-	-	-	-	-	
4	118		Lantern.	20	20	1844	-	No Variation in 1864.
9	119		Round, Stone.	45	40	1833	- . -	Bearing W. by N. clears Pelée Shoal.
-	120		-	-	76	61	1861	-

DETROIT RIVER.

18	121	Ditto.	Round, Stone.	56	40	1837	-	
----	-----	--------	---------------	----	----	------	---	--

LAKE ST. CLAIR.

12 6	122	-	Square, Wood.	34	30	1837	- . -	The two Lights in one lead over the Bar.
		-	Stone, Round Tower.	15	15	1845	-	

LAKE HURON.

25	123	Ditto.	Square Tower.	125	20	1847	-	No Variation in 1864.
10	124	-	-	105	87	1859	D. 2nd Ord.	Variation in 1864, 0° 40' E.
10	125	-	-	86	86	1859	D. 2nd Ord.	
10	126	-	-	90	85	1859	D. 2nd Ord.	
12	127	-	-	130	85	1859	D. 3rd Ord.	
10	128	-	-	80.	85	1859	D. 2nd Ord.	
8	129	-	-	61	60	1859	D. 4th Ord.	Variation in 1864, 2½° W.
-	130	-	-	24	-	1858	-	RED light. Variation in 1864, 2° 4' W.

No.	Name of Light.	Place.	Latitude.		Longitude.	Number of Lights, and Relative Positions.	Fixed, Flash, Fix & Flash Int., Alt., Revolving.	Interval of Revolutions or Flash.	Miles seen in clear Weather.
			N.	W.					

NEW BRUNSWICK.

131	Miscou Island.	Birch Point.	48 1 0	64 29 25	1	- - -	F.	- - -	12
132	MIRAMICHI BAY.	Escumencac Point.	47 4 32	64 47 33	1	- - -	F.	- - -	14
133	Shediac.	Chene Wharf.	46 14 38	64 31 32	1	- - -	F.	- - -	6
134	Richibucto Head.	- - -	- - -	- - -	1	- - -	F.	- - -	-

PRINCE EDWARD ISLAND.

135	Bedeque Bay.	Green's Wharf.	46 23 32	63 47 5	1	- - -	F.	- - -	7
136	Charlotte Town Harbour.	Blockhouse Point, W. side of entrance.	46 11 36	63 7 28	1	- - -	F.	- - -	9
137	HILLSBOROUGH BAY.	Prim Point, 100 yards from the Point S.E. Point of Bay.	46 3 10	63 2 6	1	- - -	F.	- - -	13
138	CARDIGAN BAY, Georgetown Harbour, S. entrance.	Pannure Head.	46 8 47	62 27 40	1	- - -	F.	- - -	14
139	Richmond Harbour	Bill Hook or Fishery I. N. Side Entrance.	46 34 44	63 42 29	1	- - -	F.	- - -	8
140	Cascumpeque, N. side.	Sandy Island.	46 48 22	64 2 15	1	- - -	F.	- - -	8

NOVA SCOTIA.

141	BERTON ISLAND.	PICTOU HARBOUR.	S. Point of Entrance.	45 41 25	62 39 26	2	Vertical Upper White, Lower Red.	F.	- - -	11
142		PICTOU ISLAND.	S.E. Point.	45 49 10	62 30 29	1	- - -	F.	- - -	12
143		CAPE ST. GEORGE.	On the N. side Cape.	45 52 35	61 53 40	1	- - -	Rev.	Every half minute.	25
144		Port Hood.	S. Entrance of the Harbour.	46 0 0	61 31 40	1	- - -	F.	- - -	10
145		Sea Wolf or Margaree Island.	Summit or Middle of Island.	46 21 30	61 15 33	1	- - -	F.	- - -	21
146		BIRD ISLAND.	Ciboux I. $\frac{1}{2}$ of a mile from N. end.	46 23 10	60 22 30	1	- - -	Rev.	Every minute.	14
147		SYDNEY.	Flat Point E. side of Spanish Bay.	46 16 12	60 7 22	1	- - -	F.	- - -	14
148		FLINT ISLAND.	On the Island.	46 11 5	59 45 50	1	- - -	Rev.	Every 15 seconds.	12
149		SCATARI ISLAND.	N.E. Point, on Trap rock.	46 2 13	59 40 18	1	- - -	Rev.	Visible a minute, eclipsed half a minute.	15
150		LOUISBURG HARBOUR.	N. side of Entrance, 69 fathoms in shoal on Lighthouse Point.	45 54 34	59 57 15	1	- - -	F.	- - -	16

val	Miles
tion	seen in
sh.	clear
	Weather.

No.	Time Harbour Light is shown.	Colour, or any Peculiarity of Lighthouse.	Height in feet, Centre of Lantern, above High Water.	Height in feet of Building from Base to Vane.	Year lighted.	Character and Order of Illuminating Apparatus.	REMARKS.
-----	------------------------------------	---	--	---	------------------	---	----------

NEW BRUNSWICK.

131	- - -	Wood, White. Octagon.	79	74	1856	- - -	RED Light.
132	- - -	Wood, White.	70	58	1841	- - -	Var ^a in 1864, 22° 40' W.
133	Summer Season.	Lantern on a Pole.	15	-	1860	- - -	Var ^a in 1864, 20° 30' W
134	- - -	- - -	-	-	-	D. 4th Order.	Building.

PRINCE EDWARD ISLAND.

135	All night, when naviga- tion is open.	Lantern on a Pole.	15	-	1856	-	
136	All night, when naviga- tion is open.	On roof of Blockhouse, White.	35	-	1856	- - -	Var ^a in 1864, 23° W.
137	All night, 8 months.	Brick, White, Circular.	68	50	1845	C.	
138	Ditto.	Wood, Octagon, White.	89	40	1853	C.	The Light should be kept open of Torras Point to clear the reef off Cape Bear.
139	Ditto.	Lantern on a Pole.	20	-	1856	-	
140	Ditto.	Octagon Tower, Wood, White.	82	-	1856	C.	Var ^a in 1864, 22½° W.

NOVA SCOTIA.

141	All night, 8 months in the year.	Octagon, Wood striped Red and White Vertically.	65	55	1834	- - -	Lighted when the navigation is free from ice. A small RED Light is seen below the Lantern, kept W.S.W. clears the E. reefs of Pictou Island. Var ^a in 1864, 22½° W.
142	- - -	Square, White.	52	-	1853	-	
143	- - -	Square, White.	350	30	1861	D. 2nd Order.	
144	- - -	Square Tower. White.	54	-	1854	- - -	RED Light on the N. side. WHITE Light on the S. side.
145	- - -	White, Square Tower.	208	-	1854	- - -	To vessels in dangerous proximity to the Island, the Light may become obscured by the abrupt Cliffs on the sides of the Island.
146	- - -	- - -	77	-	1863	- - -	Alternate red and white flashes.
147	- - -	Octagon, Red and White, Vertical.	70	51	1832	- - -	Var ^a in 1864, 24° 48' W.
148	- - -	- - -	65	-	1856	- - -	Visible all round the Compass.
149	- - -	Octagon, White.	90	70	1830	- - -	The Light should never be brought to bear to the Eastward of N.N.E. or to the South- ward of S.S.W., nor approached nearer than 1½ miles. A Gun is here for Signals, also a boat to render assistance.
150	- - -	White, with a black vertical Stripe.	85	5	1842	- - -	On keeper's dwelling. Var ^a in 1864, 25½° W.

No.	Name of Light.	Place.	Latitude.		Longitude.		Number of Lights, and Relative Positions.	Fixed, Flashing, Fix & Flash Int., Alt., Revolving.	Interval of Revolution or Flash.	Miles seen in clear Weather.	No.	Har- bour.
			N.	W.	N.	W.						
151	CANSO GUT.	N. Entrance W. side 120 yards in shore.	45 41 42	01 28 58	1	- - -	F.	- - -	18 ..	151	-	
152		S. Entrance, Eddy Point.	45 31 20	01 14 42	2	Horizontal 8 yards apart.	F.	- - -	8	152	-	
153	Guysboro Harbour Chedabucto Bay.	W. side of Entrance, near Pearl Point.	45 22 47	01 29 11	1	- - -	F.	- - -	8	153	All	
154	ARICHAH HARBOUR, Madame Island.	Marcho Point, S. En- trance.	45 29 2	01 1 52	1	- - -	F.	- - -	8	154	-	
155	CANSO CAPE.	N. part of Cranberry Island.	45 10 40	00 55 20	2	In one Tower, vertical, 12 yards apart.	F.	- - -	Upper 15 Lower, 9	155	-	
156	WHITE HEAD ISLAND.	S.W. extremity.	45 11 59	01 8 2	1	- - -	Rev.	Every 20 seconds.	11	156	-	
157	BEAVER LANDS.	S.E. part of E. Beaver, or William Island.	44 49 34	02 20 13	1	- - -	Rev.	Every two minutes.	12	157	-	
158	HALIFAX.	Devil Island, S.W. part, E. Entrance to Harbour.	44 34 48	03 27 27	1	- - -	F.	- - -	8	158	-	
159		Sherbrooke Tower, Manger Beach, E. side of Entrance.	44 36 6	03 31 55	1	- - -	F.	- - -	12	159	All	
160	SAMSO.	Middle of Island.	44 26 11	03 33 42	1	- - -	F.	- - -	20 or 21	160	-	
161	MALAGUASH or LUNENBURG BAY.	Cross Island, E. Point.	44 18 43	04 9 57	2	Vertical, 34 feet apart.	Upper, Rev. Lower, F.	Every minute.	Upper, 14, Lower, 8	161	All	
162	CAPE LE HEVE.	IRONBOUND ISLAND, S. side.	44 13 43	04 16 10	1	- - -	Rev.	Every 30 seconds.	13	162	-	
163	Metway or Medway Head.	Admiralty Head, W. side Entrance.	44 6 10	04 32 14	1	- - -	F.	- - -	10	163	-	
164	LIVERPOOL BAY.	COFFIN ISLAND, S. Point.	44 1 58	04 37 34	1	- - -	Rev.	Every two minutes.	16	164	-	
165		Fort Point.	44 3 45	04 39 0	1	- - -	F.	- - -	7	165	-	
166	Rugged Island Harbour.	Gull Rock.	43 39 14	65 5 5	1	- - -	F.	- - -	10	166	-	
167	SHELBURNE HARBOUR.	CAPE ROSEWAY, near S. E. extreme of MACNUTT ISLAND.	43 37 17	65 15 45	2	Vertical, 54 feet apart.	F.	- - -	Upper, 18, Lower, 10	167	All r	
168	PORT LATOUR.	BACCARO POINT, W. side Entrance.	43 26 54	65 28 12	1	- - -	Rev.	Every 40 seconds.	12	168	-	
169	CAPE SABLE.	On the Cape.	43 23 19	65 37 11	1	- - -	F.	- - -	12	169	-	
170	Tusket River	Fish Island.	43 41 30	65 56 50	2	Horizontal.	F.	- - -	-	170	-	
171	Pubnico Harbour.	On Beach Point, S.E. side of Entrance, 60 fathoms from low- water mark.	43 35 45	65 46 54	1	- - -	F.	- - -	8	171	-	

Interval of Revolution.	Miles seen in clear Weather.	No.	Time Harbour Light is shown.	Colour, or any Peculiarity of Lighthouse.	Height in feet, Centre of Lantern, above High Water.	Height in feet of Building from Base to Vane.	Year lighted.	Character and Order of Illuminating Apparatus.	REMARKS.
	18	151	-	Wood, Square, White.	110	35	1842	-	There is good anchorage under the Light with the wind off shore.
	8	152	-	Wood, Square, White, with a Black Diamond.	25 each	-	1851	-	
	8	153	All night.	Wood, Square, White.	30	20	1840	-	Var ⁿ in 1864, 22½° W.
	8	154	-	Wood, Square, White.	34	-	1851	-	
	Upper 15 Lower, 9	155	-	Wood, Octagon, striped Red and White horizontally.	75 40	60	1815	-	Var ⁿ in 1864, 22° 52' W.
Very seconds.	11	156	-	White, Pyramidal Octagonal Lantern.	55	35	1854	-	Light not totally obscured during the eclipse, 10 seconds duration flash and 10 seconds eclipse.
Very two minutes.	12	157	-	White, with two Black Balls seaward, S.S.W.	70	35	1846	-	On a house.
	8	158	-	Octagonal, Dull Red, with White Belt.	45	-	1852	-	BRIGHT RED to Seaward. Pilots are stationed here.
	12	159	All night.	White, Circular, Roof Red.	58	48	1815	-	When Sambro Light bears W.S.W. this Light should not be brought to the Westward of N., which clears the Thrum Cap Shoal. Var ⁿ in 1864, 16° 36' W.
	20 or 21	160	-	Octagon, White.	115	60	1758	-	If a vessel fires a gun during a fog it will be answered by two from the Island. Pilots resort here.
Very minute.	Upper, 14, Lower, 8	161	All night.	Red, Octagonal base.	100 65	53	1832	-	Pilots resort here; and vessels might take refuge in case of necessity. Upper, WHITE 45 seconds, dark 15 seconds.
Very seconds.	13	162	-	Square Tower, White.	72	29	1855	-	Near the edge of a cliff 40 feet high.
	10	163	-	Square White, with Black Square seaward.	44	-	1851	-	Looks like a dwelling house.
Very two minutes.	16	164	-	Octagon, Horizontal Stripes Red & White, eight in number.	72	66	1812	-	Light 40 seconds, dark 80 seconds. Var ⁿ in 1864, 18½° W.
	7	165	-	Square, White.	80	17	1855	-	
	10	166	-	Square, White.	44	39	1853	-	
	Upper, 18, Lower, 10	167	All night.	Octagonal, Vertical Stripes, Black and White.	120 65	77	1788; Repaired 1858.	-	Var ⁿ in 1864, 17½° W.
Very seconds.	12	168	-	Square, White, with Black Ball, seaward.	49	65	1850	-	White 15 seconds, and dark 25 seconds.
	12	169	-	White, Conical.	53	50	1861	D.	RED light. Var ⁿ in 1864, 16½° W.
	-	170	-	-	-	-	1863	-	Visible seaward.
	8	171	-	Square, White.	28	27	1854	-	Open westward of St. John's Island, bearing N.E. by N., clears the ledge; making the Harbour from any other Direction, the Light must be brought to the Northward of E.N.E. before it can be steered for, to avoid C. St. Ann Shoal.

No.	Name of Light.	Place.	Latitude N.	Longitude W.	Number of Lights, and Relative Position.	Fixed, Flashing, Fix & Flash Int., Alt., Revolving.	Interval of Revolution or Flash.	Miles seen in clear Weather.	No.	Har- bour	
172	SEAL ISLAND.	S. Point an eighth of a mile inland.	43 23 34	66 0 52	1 - - -	F.	- - -	18	172	-	
173	YARMOUTH OR CAPE FOURCHU.	E. Cape, S. Point.	43 47 28	66 9 21	1 - - -	Rev.	Every minute and 45 seconds.	26	173	-	
174	BRYER ISLAND.	W. Point.	44 14 57	66 23 33	1 - - -	F.	- - -	15	174	-	
175	Peter Island.	S. Entrance to Grand Passage.	44 15 30	60 20 54	2 Horizontal.	F.	- - -	10	175	Al	
170	DIGBY or ANNAPOLIS.	S. Point of Entrance.	44 41 34	65 47 8	1 - - -	F.	- - -	13	170	-	
177	BAY OF FUNDY.	Marshall Cove or Port Wil- liams.	44 56 52	65 10 1	2 - - -	F.	- - -	5	177	-	
178		Margaretville.	45 2 57	65 4 0	2 - - -	F.	- - -	5	178	-	
179		BLACK ROCK POINT.	S. shore.	45 10 10	64 40 0	1 - - -	F.	- - -	12	179	-
180		HORTON.	On the Bluff.	45 6 15	64 2 0	1 - - -	F.	- - -	20	180	-
181		BASON OF MINES.	BURNT COAT HEAD.	45 18 17	63 40 52	1 - - -	F.	- - -	13	181	-
182	Partridge Island, or Parsborough.	W. side of River.	45 23 0	64 19 0	1 - - -	F.	- - -	9	182	-	
183	Apple River.	Cape Capstan, or Hetty Point, N. Entrance.	45 20 0	64 50 0	2 Horizontal, 8 yards apart.	F.	- - -	10	183	-	
184	Cobequid Bay.	Spencer Point.	- - -	- - -	1 - - -	F.	- - -	-	184	-	

NEW BRUNSWICK.

185	BAY OF FUNDY.	GRINDSTONE.	On the W. part of the Island.	45 43 13	64 37 25	1 - - -	F.	- - -	12	185	-
186		ENRAGE.	On the pitch of the Cape.	45 35 34	64 46 55	1 - - -	F.	- - -	15	186	-
187		QUACO.	On a small rock off the Head.	45 19 20	65 31 55	1 - - -	Rev.	Every 20 seconds.	15	187	-
188		ST. JOHN'S HARBOUR.	PARTRIDGE ISLAND.	45 14 3	66 3 5	1 - - -	F.	- - -	26	188	-
189			Beacon Tower.	45 15 3	66 3 5	1 - - -	F.	- - -	10	189	All
190	LEPREAU.	On the Point.	45 3 31	66 27 39	2 Vertical, 27 feet apart.	F.	- - -	15	190	-	

Interval of Revolution Flash.	Miles seen in clear Weather.	No.	Time Harbour Light is shown.	Colour, or any Peculiarity of Light-house.	Height in feet, centre of Lantern above High Water.	Height in feet of Building base to Vane.	Year lighted.	Character and Order of Illuminating Apparatus.	REMARKS.
-	18	172	-	Octagon, White.	98	60	1850	-	
very minute and seconds.	20	173	-	Octagon, Vertical Stripes, Red and White.	117	50	1850	-	Light one and a quarter minute, dark half minute, and a fog bell.
-	15	174	-	Octagon, White.	92	55	1809; Rebuilt 1892.	-	
-	10	175	All night.	Square, White.	40 each	-	1850	-	Seen from the N., between S. by W. and S.S.W., and from the S. between N.E. by E. and N.N.W. $\frac{1}{2}$ W.
-	13	176	Ditto	Square, Vertical Stripes.	70	22	1817	-	Var ⁿ in 1864, 18° 20' W.
-	5	177	-	Square, White.	60 $\frac{1}{2}$ 57 $\frac{1}{2}$	22	1850	-	At the distance of about 5 miles it will show a WHITE Light, and on a nearer approach GREEN.
-	5	178	-	Square, White.	50 $\frac{1}{2}$ 27 $\frac{1}{2}$	22	1850	-	At the distance of about 5 miles it will show a WHITE Light, and on a nearer approach RED.
-	12	179	-	Square, White.	45	35	1848	-	
-	20	180	-	Square, White.	92	20	1851	-	
-	13	181	-	Square, White.	75	50	1850	-	On the keeper's dwelling.
-	9	182	-	Octagon, White.	37	32	1852	-	
-	10	183	-	Square, White.	40 10	24	1848	-	
-	-	184	-	Window in a building.	-	-	1863	-	

NEW BRUNSWICK.

-	12	185	-	Wood, Octagonal, White.	60	-	1850	-	Cape Enragé Lighthouse. S.W. by W. $\frac{1}{2}$ W. about 10 miles. Variation in 1864, 20° W.
-	15	186	-	Square, White.	120	23	1840	-	Visible on the bearing of N.W. round by the South to N.E.
very seconds.	15	187	-	Octagon. Horizontal Bands, Red and White.	58	46	1835; Rebuilt 1848.	-	
-	20	188	-	Octagon. Vertical Stripes, Red and White.	119	40	1791; Rebuilt 1832.	-	In foggy weather a steam whistle is sounded every minute. A bell buoy is established near the East side of Partridge Reef.
-	10	189	All night.	Octagon. Vertical Stripes, White and Red.	35	15	1828	-	Leading Light for the Spit. Var ⁿ in 1864, 18 $\frac{1}{2}$ ° W.
-	15	190	-	Octagon. Striped Horizontally, Red and White.	81 53	31	1831	-	Visible between W.N.W. and E. by N. from the S. Var ⁿ in 1864, 17° 50' W.

No.	Name of Light.	Place.	Latitude.		Longitude.		Number of Lights, and Relative Position.	Fixed, Flashing, Fix & Flash Int., Alt., Revolving.	Interval of Revolution or Flash.	Miles seen in clear Weather.	No.	H
			N.	W.	N.	W.						
191	CAMPOBELLO ISLAND.	N. Point of Head Harbour.	44 57 40	66 53 55	1	- - -	F.	- - -	15	191	-	
192	Port St. Andrew.	N. Point of Entrance.	45 4 10	67 4 0	1	- - -	F.	- - -	10	192	A	
193	GRAND MANAN ISLAND, N.E. part.	SWALLOW'S TAIL.	44 45 40	66 44 0	1	- - -	- - -	- - -	17	193	-	
194	MACHIAS ISLANDS.	Eastorn Light.	44 30 7	67 6 13	2	S.E. by E. $\frac{1}{2}$ E. & N.W. by W. $\frac{1}{2}$ W. 55 $\frac{1}{2}$ yards apart.	F.	- - -	15	194	-	
195	GANNET ROCK.	Middle Rock very small.	44 30 38	66 47 1	1	- . -	Rev.	Three times in a minute.	12	194	-	

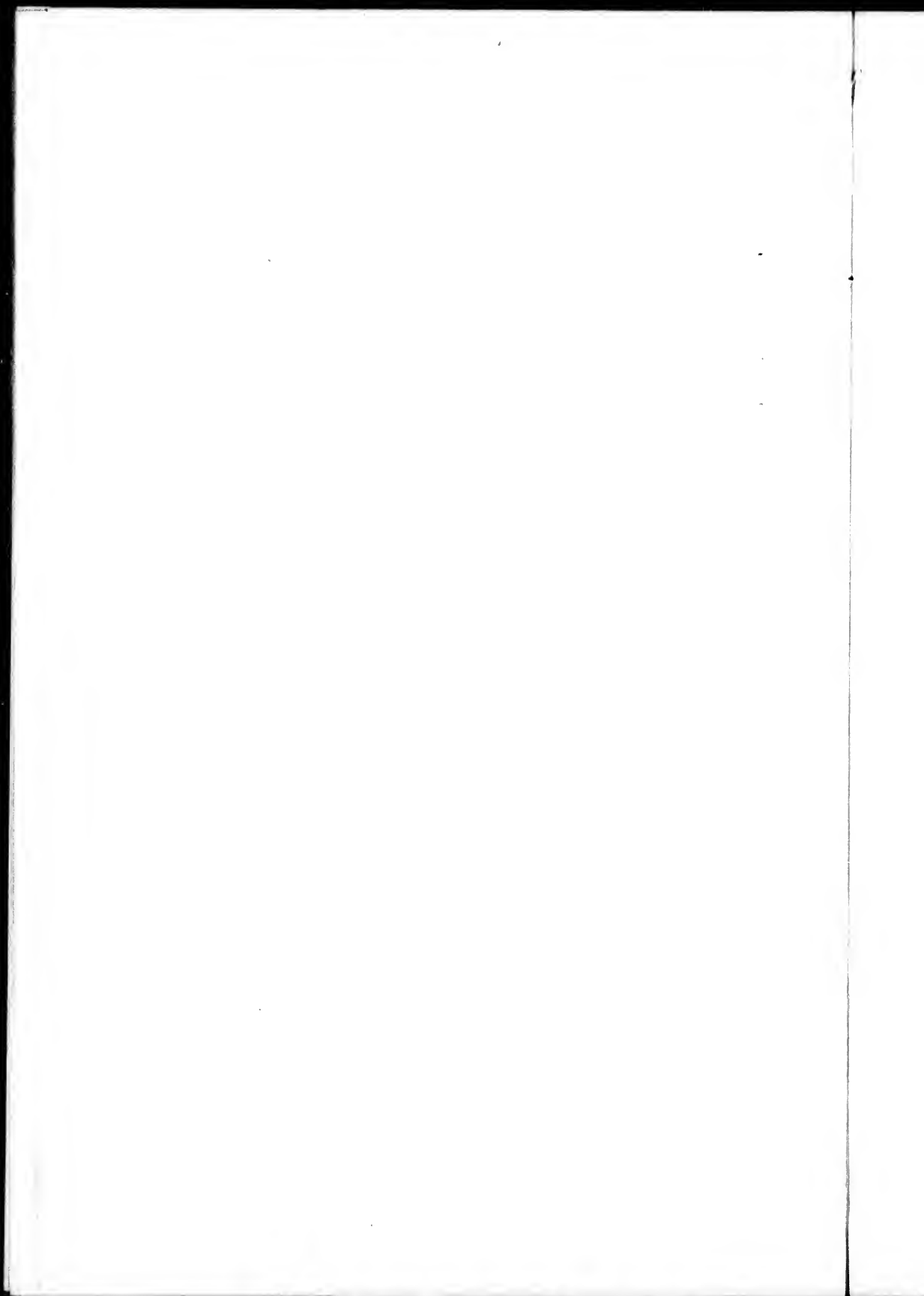
BERMUDAS.

196	BERMUDA ISLES	Gibbs Hill.	32 15 4	64 51 36	1	- - -	Rev.	Every 5 $\frac{1}{2}$ seconds.	24	196	-
-----	---------------	-------------	---------	----------	---	-------	------	--------------------------------	----	-----	---

Interval of solution Flash.	Miles seen in clear Weather.	No.	Time Harbour Light is shown.	Colour, or any Peculiarity of Lighthouse.	Height in feet Centre of Lantern, above High Water.	Height in feet of Building from Base to Vane.	Year lighted.	Character and Order of Illuminating Apparatus.	REMARKS.
-	15	191	-	Octagon. White with Red Cross.	64	34	1829	-	Var ⁿ in 1864, 17½° W.
-	10	192	All night.	Octagon. White.	35	22	1833	-	Visible between N.W. by N. and S.E. by S. Var ⁿ in 1864, 15° 35' W.
-	17	193	-	White.	148	50	1861	—	
-	15	194	-	White.	58 East ⁿ 54 West ⁿ	36 each	1832	-	A gun is fired every four hours during a fog.
times minute.	12	194	-	Octagon. Striped Vertically, Half Black; Half White.	66	41	1831	-	A gun is fired to answer signals during a fog. Var ⁿ in 1864, 17° W.

BERMUDAS.

every seconds.	24	196	-	Circular, Iron. White.	362	106	1846	-	Seen all round except between the bearings of S. 48° W. and S. 52° W., also S. 53½° W. to S. 62° W., being interrupted by the high land. Variation in 1864, 7° W.
----------------	----	-----	---	------------------------	-----	-----	------	---	---



INDEX

TO THE

BRITISH NORTH AMERICAN LIGHTS.

JANUARY 1864.

<i>Names.</i>	<i>No.</i>		<i>No.</i>
A.			
Admiralty Head	163		
AMHERSTBURGH	121		
AMHERST, FORT	10		
AMOUR POINT	2		
Andrew, Fort St.	192		
Ann Shoal C. —	171		
ANNAPOLIS	176		
ANTICOSTI ISLAND	25 to 27		
Antoine, St.	40		
Apple River	183		
ARICHAT	152		
B.			
BACCALIEU ISLAND	6		
BACCARO POINT or PORT LATOUR	168		
Bague Islet	65		
BASIN OF MINES	181 to 183		
Batiscan	49		
Bature Bigot	53		
BAY OF FUNDY	185 to 195		
Beach Point	171		
Beacon Tower	189		
Beaubarnais Canal	73, 74		
Bea., Cape	138		
BEAVER or WILLIAM ISLANDS	157		
Beequets des, St. Pierre	48		
Bedequo Bay	135		
BELLE CHASSE	39		
— ISLE and STRAIT	1		
BERMUDAS	196		
BICQUETTE ISLAND	30		
Big Otter Creek	116		
Bigot Island	51		
Bill Hook Point	136		
Birch Point	131		
Bird Island	146		
— Rocks	23		
BLACK ROCK POINT	179		
Blockhouse Point	136		
Bois Blanc Island	121		
BONAVISTA, CAPE	4		
Brandy Pots	33		
BRETON I.	144 to 150		
Brockville	81 to 89		
Bruce Port	117		
		C.	
		BRUNET I.	20
		BRUNSWICK, NEW	131 to 134, 185 to 195
		BRYER ISLAND	174
		BURIN I.	16
		BURLINGTON BAY	169
		BURNT COAT HEAD	181
		— Island	88
		Burwell, Port	116
		CAMPBELLO ISLAND	191
		Canon Point	18
		CANSO GUT	151, 152
		— Cape	155
		Capstan Cape or Hetty Point	183
		CARDIGAN BAY	135
		Cascumpeque	137
		Catalina Harbour	5
		Catfish Creek	117
		Champlain	50
		Chantry Island	125
		Charles Cape	46
		Charlotte Town Harbour	136
		Chateauguay	72, 73
		Chedabucto Bay	151
		Chene River, Great	45
		— Wharf	132
		Cherry Island	77 to 79
		— Light Vessel	79
		Christian I.	129
		Ciboux I.	146
		Clark Point	124
		CLARK, LAKE ST.	122
		Cobiquid B.	184
		Coburg Harbour	98, 99
		COFFIN ISLAND	164
		COLBURNE PORT	111
		Coles Shoal	81
		Collingwood	130
		Contrecoeur	62
		Coves I.	126
		Coteau du lac	76
		CRANBERRY ISLAND	155
		CRANE ISLAND	38
		Credit Port	107
		Croix, St.	41
		CROSS ISLAND	161
		Cormorant Point	25

Names.	No.	Names.	No.
D.		II.	
Dalhousie Harbour	110	HALIFAX HARBOUR	158, 159
Darlington	101	HARBOUR GRACE	7, 8
DETROIT RIVER	118	Head Harbour	101
DEVIL ISLAND	158	HEATH POINT	25
DIGBY	176	Hemlock Point	89
Dodding Head	16	Heve, Cape Le	162
Dover Port	104	Hetty Point, or Cape Capstaa	183
DRAKE ISLAND, OUTER	93	HILLSBOROUGH BAY	137
E.		Hood, Port	144
Eagle Cape	19	Hope	100
Eastern Cape	173	HORTON BLUFF	180
Eddy Point	152	HURON, LAKE	120 to 127
EDWARD, PRINCE, ISLAND	135 to 140	I.	
Ege Island	95	IRON BOUND I.	162
ENRAGE CAPE	186	Isle of Coves	126
ERIE, LAKE	111 to 120	J.	
ESCAMENAC POINT	132	Jack Straw Shoal	85
F.		JOHN'S, ST., ISLAND	171
Father Point	29	NEWFOUNDLAND	10
FERRYLAND C.	12	NEW BRUNSWICK	188 to 189
Fish I.	170	K.	
Fishery I.	136	KAMOURASKA GRANDE ISLE	37
Flat Island	58	Kingston	90
Point	147	L.	
FLINT I.	148	LABRADOR	1, 2
Flowers Rocks	4	LAC, POINT DU	53
FORT AMHERST	10	Lachine	90 to 72
Point	165	LAKE ERIE	111 to 120
Forteau Bay	2	HURON	120 to 127
FORTUNE BAY	20	ONTARIO	90 to 110
FOURCHOU, OF YARMOUTH	173	AND ST. FRANCIS	81 to 89
FRANCIS, LAKE	76 to 80	ST. FRANCIS	76 to 80
Port	54	CLAIR	119
FUNDY BAY	185 to 195	Louis	70
G.		PETER	56 to 59
GAGE ISLAND	92	Lancaster Bar	80
GALANTRY HEAD	17	Langlais Point	45
Gananoque Narrows	84	LATOUR PORT, or Baccaro Point	168
GANNET ROCK	195	LAWRENCE, ST., RIVER AND GULF	21 to 75
GANNET ROCK	143	LE HEVE CAPE	162
George, St., Cape	135	LEPREAU POINT	130
Georgetown (P. E. Island)	196	Lighthouse Point	150
GIBBS HILL	105	Liverpool	164
GIBRALTAR POINT (Toronto)	123	LIVERPOOL BAY	164, 165
GODERICH	7, 8	Long Piletops	34
GRACE HARBOUR	193	POINT	115
GRAND MANAN I.	175	LOUISBOURG	150
Passage	113	Loup, Rivière du	57
River	37	LUNENBERG, or MALAGUASH BAY	161
Grande Isle, Kamouraska	16	Lyndock Island	83
GREAT BURIN I.	45	M.	
Chene River	5, 32	MACHIAS ISLAND	194
GREEN ISLAND	135	MACNUTT ISLAND	167
Green's Wharf	127	MADAME ISLAND	154
Griffith I.	82	MADELEINE, CAPE	52, 53
Grenadier I.	185	Magdalen Islands	23
GRINDSTONE I.	47		
Grondine	74, 75		
Grosse Point	99		
Gull Island	166		
Rock	151		
Guysboro' Harbour			

Names.	No.
Magee, Point	77
Maitland, Port	113
MALAGUASH, OR LUNENBURG BAY	161
MANAN, GRAND I.	193
Marche Point	152
Margaretville	178
Margareo Island	145
Marshall Cove	177
MARY, ST., CAPE	15
Mauger Beach	159
Medway Head	163
Mercer	20
Metway	163
Middle Rock	195
MINES, BASIN OF	180 to 184
MIRIMICHI BAY	132
Miscou Island	131
Mohawk Island	112
Montreal	68
MONTS, POINT DE	28

N.

Neuf Port	42
New BRUNSWICK	131 to 134, 185 to 195
NEWFOUNDLAND I.	3 to 20
Nottawasaga I.	128
NOVA SCOTIA	141 to 184

O.

OKVILLE	103
OFFER WADHAM	3
ONTARIO LAKE	90 to 107
Oshawa Port	102
Otter Creek, Big	116
OUTER DRAKE ISLAND	93

P.

Panmure Head	135
Parsborough	182
Partridge Island	182 to 188
Reef	188
PAUL, ST., ISLAND	21, 22
Peart Point	151
Pelée Island	119
Spit	120
Peter Island	175
Lake, St.	56 to 59
Point	94
Rock	99
Pickering	104
PICTOU HARBOUR and ISLAND	141, 142
PIERRE, St., des Becquets	48
Harbour	18, 19
ISLAND	17 to 19
Point	48
Pilgrims, Long	34
PINE, CAPE	14
PLATON POINT	43, 44
Plum Island	63
Point Clarke	124
DU LAC	55
DE MONTS	28
aux Trembles	67
Port Bruce	117
Burwell	116
COLBURN	108
Dover	114
Hood	144
Hope	100
LATOUC	168
Maitland	113
Neuf	42

Names.	No.
Port Stanley	118
St. Andrew	192
St. Francis	54
Williams	177
Yeo	92
PRESQU' ISLE	96, 97
PRIM POINT	137
PRINCE EDWARD ISLAND	135 to 140
Provenche Shoal	52
Pubnico	171

Q.

Quaco	187
Queen's Wharf	104

R.

RACE, CAPE	13
Raisin Island	59
Rapids	76
Red Horse Rock	87
ISLET	31
Repentigny	64
Richelieu Island	42 to 44
Richelieu Head	134
Richmond Harbour	136
Rimousky	29
River Thames	122
Rivière du Loup	57
Roque, St., Shoals	35
ROSEWAY CAPE	107
Rouge Cape	19
ROZIER CAPE	24
Rugged I. Harbour	166

S.

SABLE, CAPE	169
SAMBRO ISLAND	169
Sandy Island	137
SCATARI ISLAND	149
Scotch Bonnet	85
SEAL ISLAND	172
Sea Wolf I.	145
Shediac	132
SHELLBURNE HARBOUR	167
Sherbrooke Tower	159
Snake Island	91
South Traverse	35
Spanish Bay	147
SPEAR, CAPE	11
Spectacle Shoal	86
Spencer Point	184
Spillers Point	4
St. Andrew Port	192
A'n Shoal	171
Autoine	49
Clair, Lake	119
Croix	41
Francis Lake	76 to 80
and Lake Ontario	81 to 89
Port	54
GEORGE CAPE	143
JOHN'S HARBOUR	9, 10, 188, 189
Island	171
LAWRENCE, GULF AND RIVER	21 to 74
Louis, Lake	70, 71
MARY, CAPE	15
PAUL ISLAND	21, 22
Peter, Lake	56 to 59
Pierre des Becquets	48
Harbour	18, 19
Island	17 to 19

<i>Names.</i>	<i>No.</i>
St. Pierre Point	48
— Roguo Shoals	35
— Therese	66
Stanley, Port	118
Stono Island	60
— PILLAR ISLAND	38
SWALLOW TAIL	193
SYDNEY	147

T.

Terras Point	138
Thames River	122
Therese, St.	66
Thousand Islands	81 to 89
Thrum Cap Shoal	159
TORONTO, or YORK	103, 106
Trap Rock	149
Traverse	35, 62
Trembles, Point aux	67
TRINITY BAY	5
Tuskot R.	170

<i>Names.</i>	<i>No.</i>
V.	
Valtrie Island	61
— La Channel	62

W.

Welland Canal	110, 111
Whitby Harbour	103
WHITE HEAD ISLAND	156
WILLIAM, or BEAVER ISLANDS	157
Williams Port	177
Wolf, Sea, I.	145

Y.

YARMOUTH, or CAPE FOURCHU ISLAND	173
Yeo Port	92

LONDON:

Printed by GEORGE E. EYRE and WILLIAM SPOTTISWOODE,
 Printers to the Queen's most Excellent Majesty.
 For Her Majesty's Stationery Office.

[9657. —250.—12/63.]

