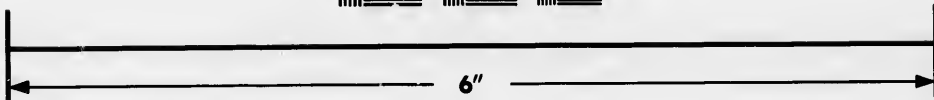
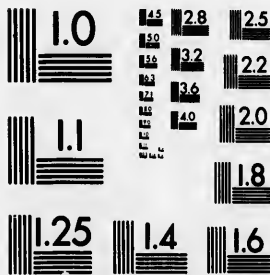


**IMAGE EVALUATION  
TEST TARGET (MT-3)**



**Photographic  
Sciences  
Corporation**

23 WEST MAIN STREET  
WEBSTER, N.Y. 14580  
(716) 872-4503

Can



**CIHM/ICMH  
Microfiche  
Series.**

**CIHM/ICMH  
Collection de  
microfiches.**



**Canadian Institute for Historical Microreproductions / Institut canadien de microreproductions historiques**



**© 1985**

Technical and Bibliographic Notes/Notes techniques et bibliographiques

The Institute has attempted to obtain the best original copy available for filming. Features of this copy which may be bibliographically unique, which may alter any of the images in the reproduction, or which may significantly change the usual method of filming, are checked below.

L'Institut a microfilmé le meilleur exemplaire qu'il lui a été possible de se procurer. Les détails de cet exemplaire qui sont peut-être uniques du point de vue bibliographique, qui peuvent modifier une image reproduite, ou qui peuvent exiger une modification dans la méthode normale de filmage sont indiqués ci-dessous.

Coloured covers/  
Couverture de couleur

Covers damaged/  
Couverture endommagée

Covers restored and/or laminated/  
Couverture restaurée et/ou pelliculée

Cover title missing/  
Le titre de couverture manque

Coloured maps/  
Cartes géographiques en couleur

Coloured ink (i.e. other than blue or black)/  
Encre de couleur (i.e. autre que bleue ou noire)

Coloured plates and/or illustrations/  
Planches et/ou illustrations en couleur

Bound with other material/  
Relié avec d'autres documents

Tight binding may cause shadows or distortion along interior margin/  
La reliure serrée peut causer de l'ombre ou de la distorsion le long de la marge intérieure

Blank leaves added during restoration may appear within the text. Whenever possible, these have been omitted from filming/  
Il se peut que certaines pages blanches ajoutées lors d'une restauration apparaissent dans le texte, mais, lorsque cela était possible, ces pages n'ont pas été filmées.

Additional comments:/  
Commentaires supplémentaires:

Coloured pages/  
Pages de couleur

Pages damaged/  
Pages endommagées

Pages restored and/or laminated/  
Pages restaurées et/ou pelliculées

Pages discoloured, stained or foxed/  
Pages décolorées, tachetées ou piquées

Pages detached/  
Pages détachées

Showthrough/  
Transparence

Quality of print varies/  
Qualité inégale de l'impression

Includes supplementary material/  
Comprend du matériel supplémentaire

Only edition available/  
Seule édition disponible

Pages wholly or partially obscured by errata slips, tissues, etc., have been refilmed to ensure the best possible image/  
Les pages totalement ou partiellement obscurcies par un feuillet d'errata, une pelure, etc., ont été filmées à nouveau de façon à obtenir la meilleure image possible.

This item is filmed at the reduction ratio checked below/  
Ce document est filmé au taux de réduction indiqué ci-dessous.

10X	14X	18X	22X	26X	30X
<input type="checkbox"/>	<input type="checkbox"/>	<input checked="" type="checkbox"/>	<input type="checkbox"/>	<input type="checkbox"/>	<input type="checkbox"/>
12X	16X	20X	24X	28X	32X

The copy filmed here has been reproduced thanks to the generosity of:

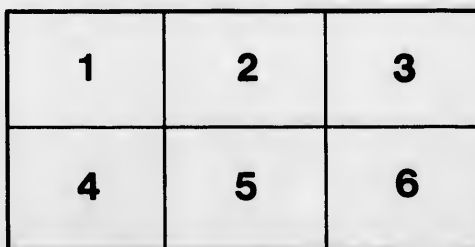
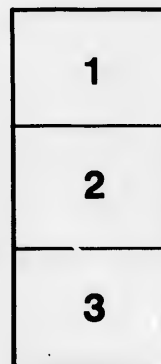
Metropolitan Toronto Library  
Fine Art Department

The images appearing here are the best quality possible considering the condition and legibility of the original copy and in keeping with the filming contract specifications.

Original copies in printed paper covers are filmed beginning with the front cover and ending on the last page with a printed or illustrated impression, or the back cover when appropriate. All other original copies are filmed beginning on the first page with a printed or illustrated impression, and ending on the last page with a printed or illustrated impression.

The last recorded frame on each microfiche shall contain the symbol  $\rightarrow$  (meaning "CONTINUED"), or the symbol  $\nabla$  (meaning "END"), whichever applies.

Maps, plates, charts, etc., may be filmed at different reduction ratios. Those too large to be entirely included in one exposure are filmed beginning in the upper left hand corner, left to right and top to bottom, as many frames as required. The following diagrams illustrate the method:



L'exemplaire filmé fut reproduit grâce à la générosité de:

Metropolitan Toronto Library  
Fine Art Department

Les images suivantes ont été reproduites avec le plus grand soin, compte tenu de la condition et de la netteté de l'exemplaire filmé, et en conformité avec les conditions du contrat de filmage.

Les exemplaires originaux dont la couverture en papier est imprimée sont filmés en commençant par le premier plat et en terminant soit par la dernière page qui comporte une empreinte d'impression ou d'illustration, soit par le second plat, selon le cas. Tous les autres exemplaires originaux sont filmés en commençant par la première page qui comporte une empreinte d'impression ou d'illustration et en terminant par la dernière page qui comporte une telle empreinte.

Un des symboles suivants apparaîtra sur la dernière image de chaque microfiche, selon le cas: le symbole  $\rightarrow$  signifie "A SUIVRE", le symbole  $\nabla$  signifie "FIN".

Les cartes, planches, tableaux, etc., peuvent être filmés à des taux de réduction différents. Lorsque le document est trop grand pour être reproduit en un seul cliché, il est filmé à partir de l'angle supérieur gauche, de gauche à droite, et de haut en bas, en prenant le nombre d'images nécessaire. Les diagrammes suivants illustrent la méthode.

aire  
détails  
ues du  
t modifier  
ger une  
e filmage

ées

re

y errata  
nd to

nt  
ne pelure,  
çon à



32X

Toror  
(Pa Pa  
759.19  
.N266  
ary

# CATALOGUE

OF THE FIRST EXHIBITION AND SALE OF PAINTINGS BY THE NEW WATER COLOR SOCIETY, HELD AT ROBERTS' ART GALLERY, FROM NOV. 6TH TO 15TH, 1960.



THE  
INV  
BIT  
AT  
ST.  
9 AM

THE NEW WATER COLOR SOCIETY  
INVITE YOU TO ATTEND AN EXHIBITION AND SALE OF PAINTINGS,  
AT ROBERTS' ART GALLERY, 51 KING  
ST. WEST, COMMENCING ON NOV.  
9 AND ENDING THURSDAY, NOV. 15.

**T**HIS Society has been organized with a view of placing the works of its members more directly before the Art-loving public for purposes of sale, than has hitherto been done in their studios or the larger exhibitions, by holding small and select exhibitions and sales in the principal cities and towns of Canada. Its membership consists of the following well known Artists :

F. M. BELL-SMITH, R.C.A., O.S.A.  
W. D. BLATCHLEY, O.S.A.  
F. H. BRIGDEN, O.S.A.  
F. S. CHALLENGER, R.C.A., O.S.A.  
R. F. GAGEN, A.R.C.A., O.S.A.  
F. McG. KNOWLES, R.C.A., O.S.A.  
J. D. KELLY, O.S.A.  
LAURA MUNTZ, A.R.C.A., O.S.A.  
C. M. MANLY, A.R.C.A., O.S.A.

**A** COMPLETE and rigid selection of the latest and best works from their studios will be made, and the business of these Exhibitions and Sales so conducted as to merit confidence to the extent that they may become a regular means for picture buyers to procure works that can be regarded as representative of our leading Water Color Painters, and at prices to be fixed by the purchasers.

759.19  
N 266

NOV 1 1963

**C**

1. An
2. Sq
3. Ne
4. B!
5. St.
6. Th
7. TH
8. W
9. In
10. In
11. A
12. A
13. A
14. E
15. T
16. O



# CATALOGUE

---

---

1. An Ontario Road . . . . . F. H. Brigden
2. Squally Weather . . . . . J. D. Kelly
8. Near the Source of the Illlcilllwaet . . . . . R. F. Gagen
4. Bit on the Thames near London  
Bridge . . . . . F. McG. Knowles
5. St. David's Pool . . . . . C. M. Manly
6. The Green Bowl . . . . . Laura Muntz
7. The Turkeys . . . . . W. D. Blatchley
8. Westminster . . . . . F. M. Bell-Smith
9. In the Valley—August . . . . . F. H. Brigden
10. In the Valley—July . . . . . " "
11. A Breezy Day . . . . . W. D. Blatchley
12. A Morning Light . . . . . " "
13. A Canadian Lake . . . . . J. D. Kelly
14. Evening—Lorne Park . . . . . " "
15. The Goat Mountains, Banff . . . . . R. F. Gagen
16. On the Sands at Close of Day . . . . . " "

- |   |                  |
|---|------------------|
| 17. Darby and Joan . . . . .                            | Laura Muntz      |
| 18. The Little Gleaner . . . . .                        | " "              |
| 19. Lake Louise . . . . .                               | F. M. Bell-Smith |
| 20. Feeding Pigeons—St. Paul's<br>Church Yard . . . . . | F. M. Bell-Smith |
| 21. On Queenston Mountain . . . . .                     | C. M. Manly      |
| 22. Sunshine of the Morning . . . . .                   | " "              |
| 23. Net Menders' Concale, France . . . . .              | F. McG. Knowles  |
| 24. Brittany Peasants . . . . .                         | " "              |
| 25. The Edge of the Wood . . . . .                      | " "              |
| 26. Mountain Mists . . . . .                            | F. M. Bell-Smith |
| 27. St. Paul's from Ludgate Hill . . . . .              | " "              |
| 28. Hell-gate, Fraser Canyon . . . . .                  | " "              |
| 29. The Lobster Fishermen . . . . .                     | R. F. Gagen      |
| 30. Sunset in the Selkirks, Glacier . . . . .           | " "              |
| 31. Setting his Nets . . . . .                          | " "              |
| 32. Rocks and Sea . . . . .                             | F. H. Brigden    |
| 33. In the Harbor, St. John, N. B. . . . .              | " "              |
| 34. Shipping . . . . .                                  | " "              |
| 35. On the Farm . . . . .                               | Laura Muntz      |
| 36. The Sewing Lesson . . . . .                         | " "              |
| 37. The Violinist . . . . .                             | " "              |
| 38. Britford-on-Avon . . . . .                          | C. M. Manly      |

- |        |
|--------|
| 39. "  |
| 40. Su |
| 41. Sh |
| 42. Re |
| 43. Au |
| 44. De |
| 45. A  |
| 46. A  |
| 47. Ar |
| 48. Th |
| 49. O  |
| 50. Sn |
| 51. A  |
| 52. Dr |
| 53. O  |
| 54. G  |
| 55. R  |
| 56. N  |
| 57. T  |
| 58. In |
| 59. O  |
| 60. M  |
| 61. S  |

Laura Muntz	39. "Spring stirred and broke" . . . . .	C. M. Manly
"	40. Summer . . . . .	" "
F. M. Bell-Smith	41. Showery Day, Quebec . . . . .	F. McG. Knowles
"	42. Return of the Fishers' Concale . . . . .	" "
F. M. Bell-Smith	43. August Evening . . . . .	" "
C. M. Manly	44. Declining Day . . . . .	W. D. Blatchley
"	45. A Pastoral . . . . .	" "
F. McG. Knowles	46. A Canadian Homestead . . . . .	" "
"	47. An Old Homestead . . . . .	J. D. Kelly
"	48. The Hemlocks . . . . .	" "
F. M. Bell-Smith	49. Old Powder Tower, Heidelberg . . . . .	" "
"	50. Snow Cloud on the Hermit Range . . . . .	R. F. Gagen
"	51. A Mountain Stream—Evening . . . . .	" "
R. F. Gagen	52. Dropping Down at Fernworthy . . . . .	C. M. Manly
"	53. October on Dartmoor . . . . .	" "
"	54. Glacier Cascade . . . . .	F. M. Bell-Smith
F. H. Bridgen	55. Rainy Day in the Selkirks . . . . .	" "
"	56. Newlyn Harbor, Cornwall . . . . .	F. McG. Knowles
"	57. The Friar . . . . .	" "
Laura Muntz	58. In New Brunswick . . . . .	F. H. Bridgen
"	59. On the St. John River . . . . .	" "
"	60. Mike and Maria . . . . .	Laura Muntz
C. M. Manly	61. Spring . . . . .	J. D. Kelly

62. View at Weston . . . . W. D. Blatchley  
63. " In Peaceful Valley " . . . . C. M. Manly  
64. On the Bow River, Banff . . . F. M. Bell-Smith  
65. In Gloucester Harbor . . . . R. F. Gagen  
66. Tootsie . . . . . Laura Muntz  
67. October . . . . . F. H. Bridgen  
68. Waning Summer . . . . . W. D. Blatchley  
69. In the Forest . . . . . J. D. Kelly  
70. " The Creeping Mists Came In " . . . C. M. Manly  
71. Fraser River near Yale . . . F. M. Bell-Smith  
72. Near Gravesend, River Thames F. McG. Knowles



latchley  
. Manly  
ll-Smith  
. Gagen  
a Muntz  
Bridgen  
latchley  
D. Kelly  
. Manly  
ll-Smith  
Knowles

