

Canada Foundry Company Limited

ORNAMENTAL IRON DEPARTMENT.

Bulletin No. 2.

June 1st, 1901.

INTRODUCTORY

We beg to announce that we have recently acquired the Plant, Stock, Patterns, Drawings and Good-will of the "Toronto Fence and Ornamental Iron Works," conducted by Messrs. Joseph Lea & Sons at 99 to 101 Queen Street East, Toronto.

We intend to operate these Works as a branch of our present business, and we expect that with increased capital and the addition of more improved manufacturing facilities, our work in future will excel in design and execution any heretofore produced by this firm, and will equal the best manufactured elsewhere.

In this Department we will make a specialty of hammered leaf and art iron work of all descriptions, elevator enclosures, fences, office railing, electro-plated work, and decorative features in wrought or cast iron for architectural use.

The following pages contain a limited number of illustrations which are presented with a view of showing the general scope and character of the work executed, and which will furnish evidence of our ability to fully meet the demand for artistic results, as well as for constructional merit.

We have been successful in retaining the services of Mr. Joseph Lea and his son, Mr. Geo. T. Lea, who will still devote their attention to this branch of our business, and we believe that the already high standard established among Architects, Owners and Builders, for workmanship, promptness, and intelligent interpretation of the designer's ideas will be strengthened, and that we may hope for increased patronage from those requiring this class of work.

When desired we are prepared to submit original designs by our own artist, and all inquiries will be, as always, treated in a uniformly careful manner.

Pending the completion of our new works, where larger and more commodious quarters will be provided, we will continue the factory and sales offices for this department at 99 and 101 Queen St. East, and those interested are invited to correspond or inquire as to details of construction, finish, prices, etc., being assured that all matters relating to the productions of the Company will receive prompt attention and thorough consideration.

THE CANADA FOUNDRY COMPANY
LIMITED

OFFICES AND WORKS:
TORONTO, ONT.



401

SHOWING ONE OF A PAIR OF GROTESQUE ANIMALS, IN HAMMERED IRON, ERECTED ON THE PARAPETS OF THE GRAND STAIRCASE IN THE CITY AND MUNICIPAL BUILDINGS, TORONTO.

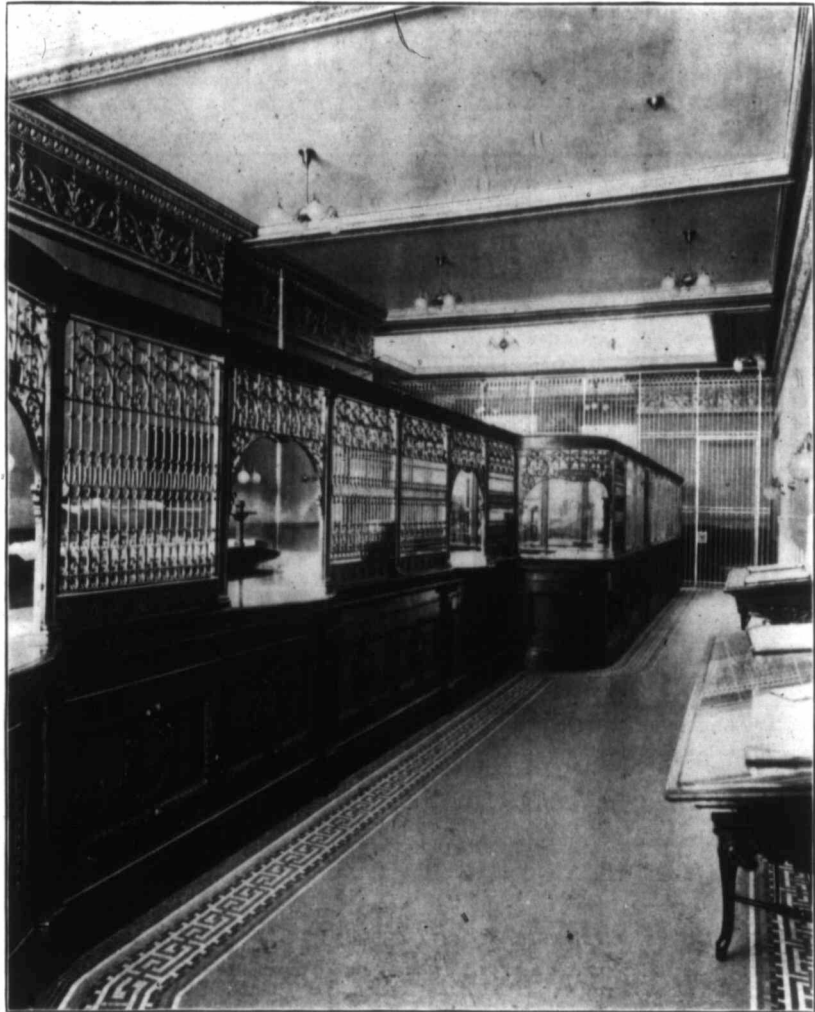


402.

GRAND STAIRCASE, CITY AND MUNICIPAL BUILDINGS.

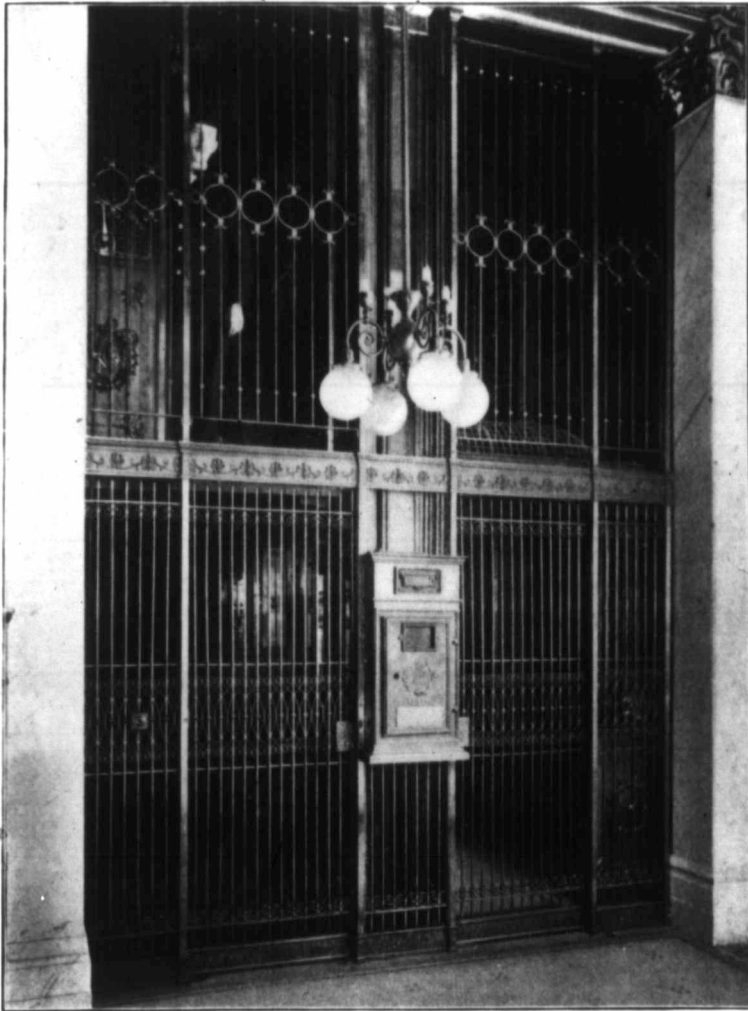
OUR CONTRACT ON THIS BUILDING INCLUDED 18 FLIGHTS OF IRON STAIRS. THE STRUCTURAL WORK IS OF STEEL, THE OUTSIDE STRINGS BEING ORNAMENTED WITH CAST IRON. PERFORATED RISERS SUPPORT THE MARBLE TREADS, AND THE LANDINGS ARE FINISHED IN MOSAIC. THE HAND RAILING, TOTALING ABOUT 700 FEET, IS IN HAMMERED LEAF WORK.

2-4 *Ornamental Iron Department.*



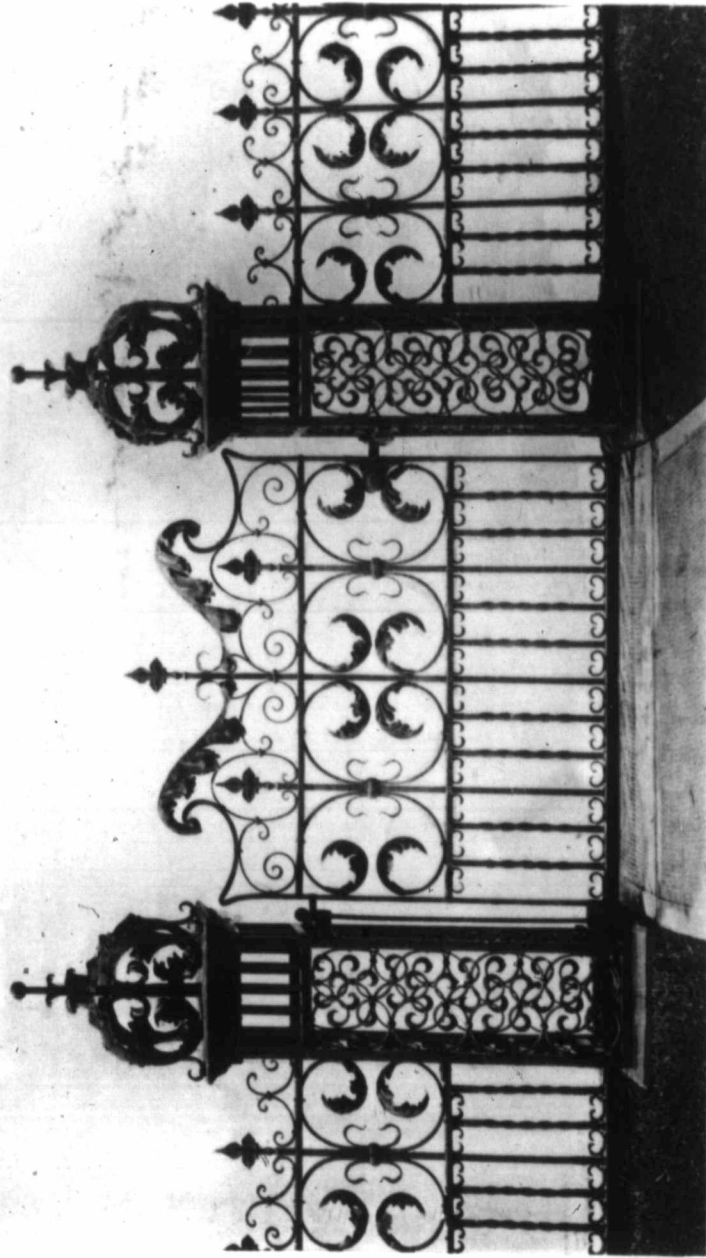
403.

SHOWING OFFICE RAILING, METAL COUNTER FRONT, AND SAFETY DEPOSIT VAULT GUARD IN THE BACKGROUND: THESE WERE ALL FINISHED IN ELECTRO BRONZE, AND WITH ALL THE INTERIOR IRON WORK, INCLUDING IRON STAIRS, WERE MADE BY US AND ERECTED IN THE NATIONAL TRUSTS CO.'S BUILDING, TORONTO.



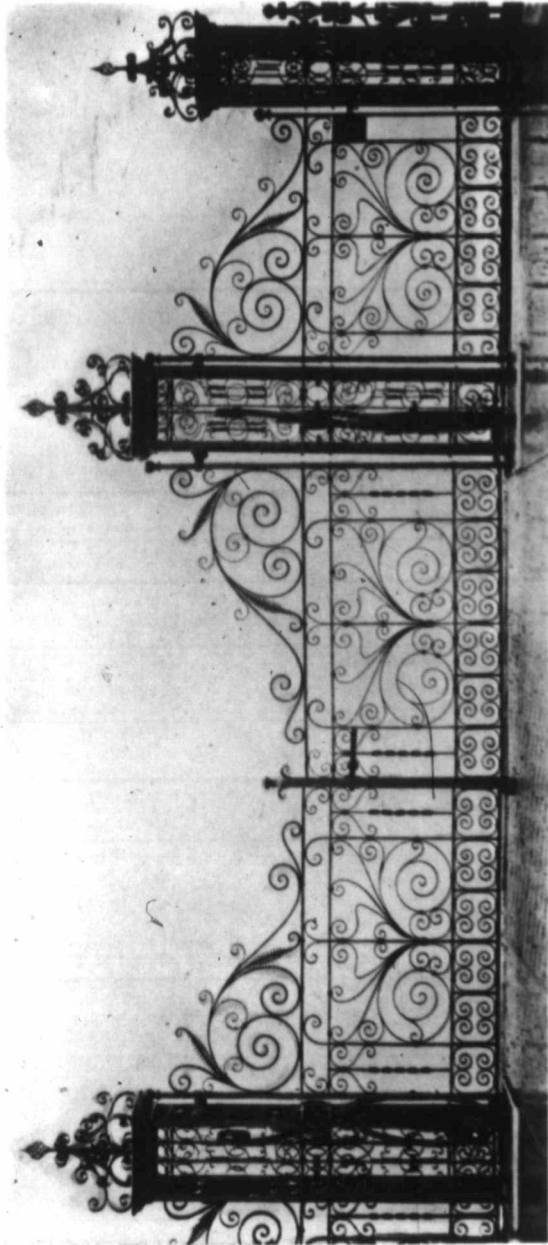
401

ELEVATOR FRONT FINISHED IN ELECTRO BRONZE AND ERECTED IN THE NATIONAL TRUSTS CO.'S BUILDING, TORONTO. THE ELEVATOR CARS IN THIS BUILDING WERE MADE BY US, THE LOWER PANELS BEING CONSTRUCTED IN STEEL AND ORNAMENTED IN RELIEF.



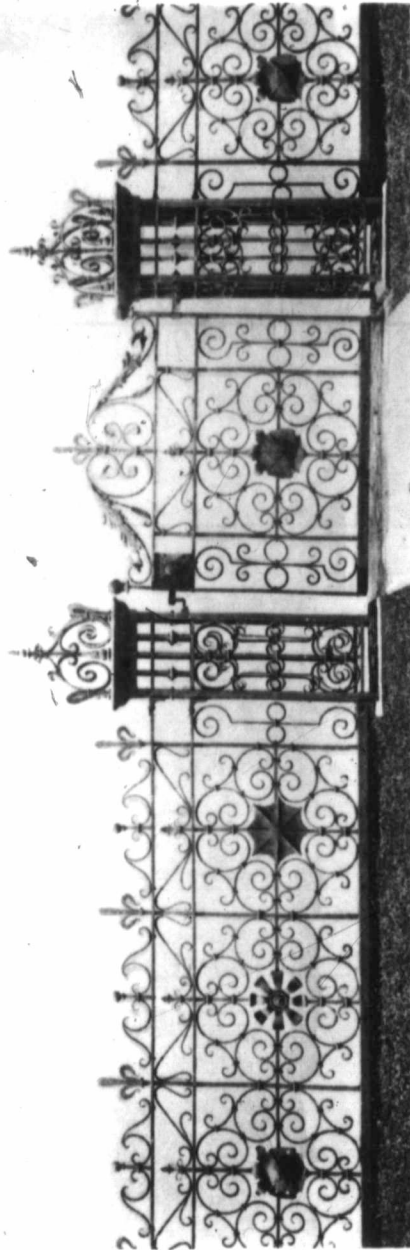
405

GATE AND FENCE IN ORNAMENTAL WROUGHT IRON AND HAMMERED LEAF WORK
FOR HON. LYMAN MELVIN JONES, ST. GEORGE STREET, TORONTO.



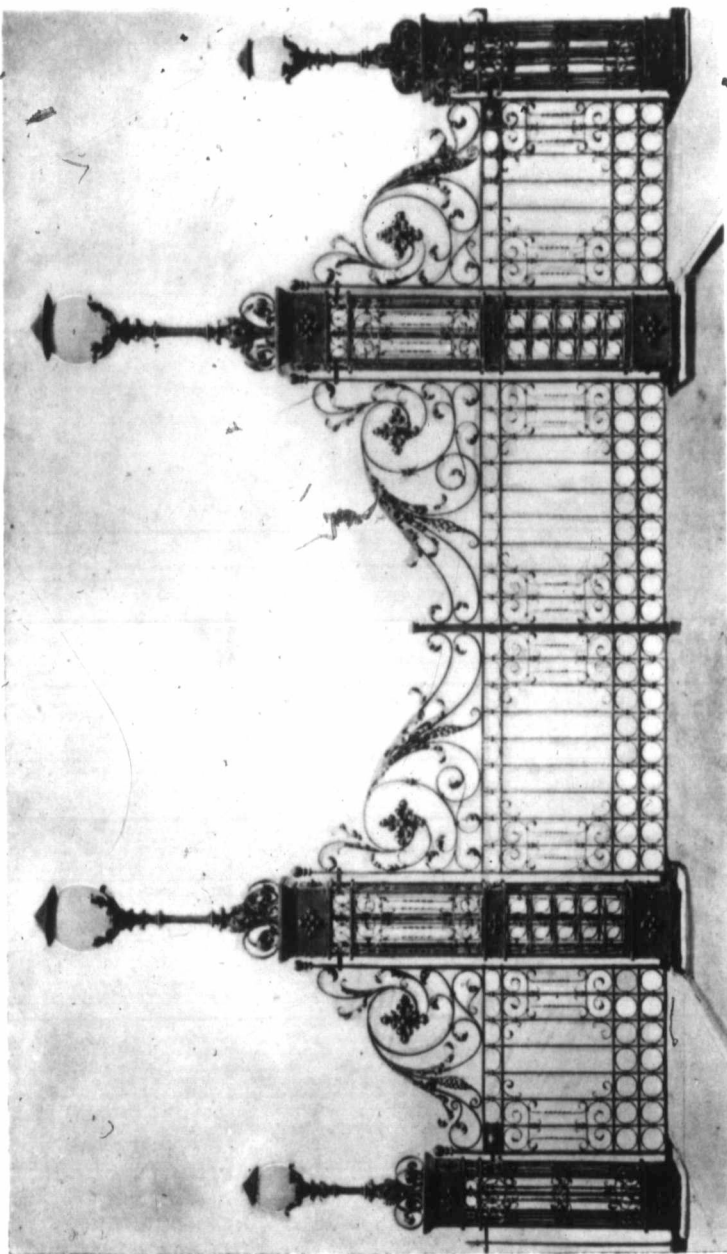
465

DRIVEWAY GATES ERECTED AT THE RESIDENCE OF THE LATE HUGH RYAN, ESQ., ROSEDALE, TORONTO.

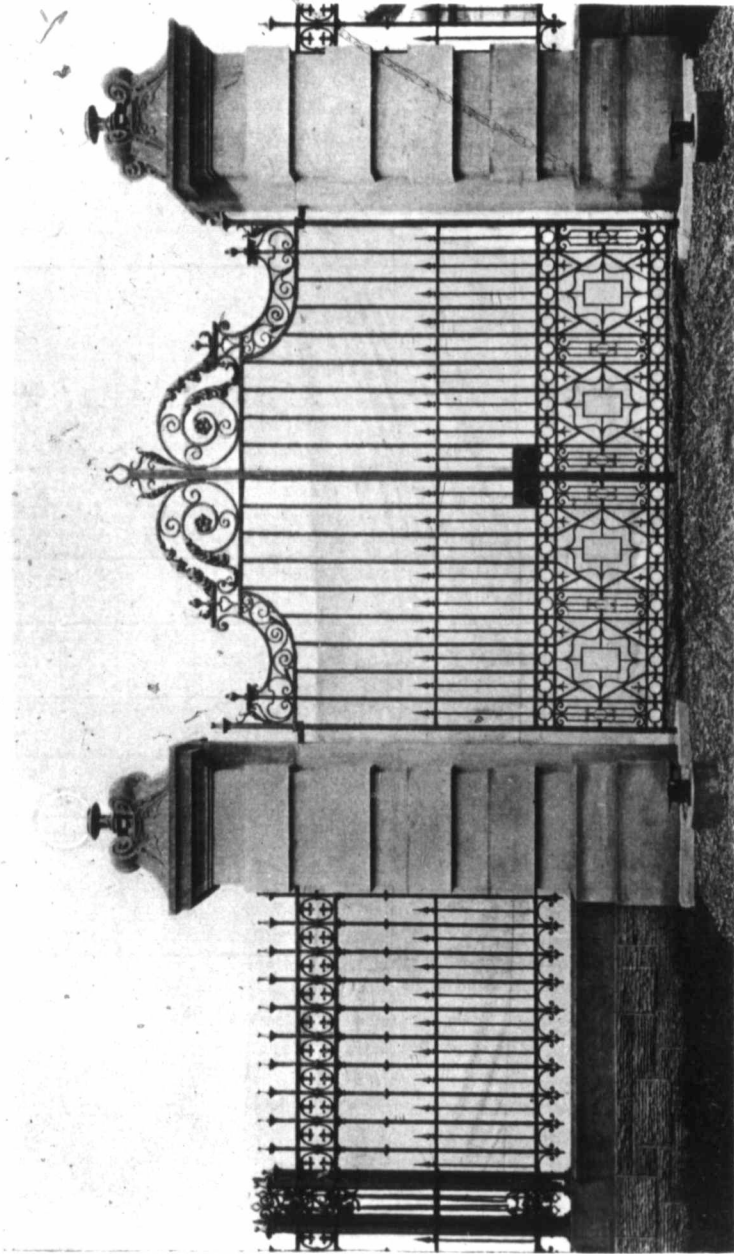


407

GATE AND FENCE IN ORNAMENTAL IRON ERECTED FOR MR. ROSS GOODERHAM, ST. GEORGE STREET, TORONTO.

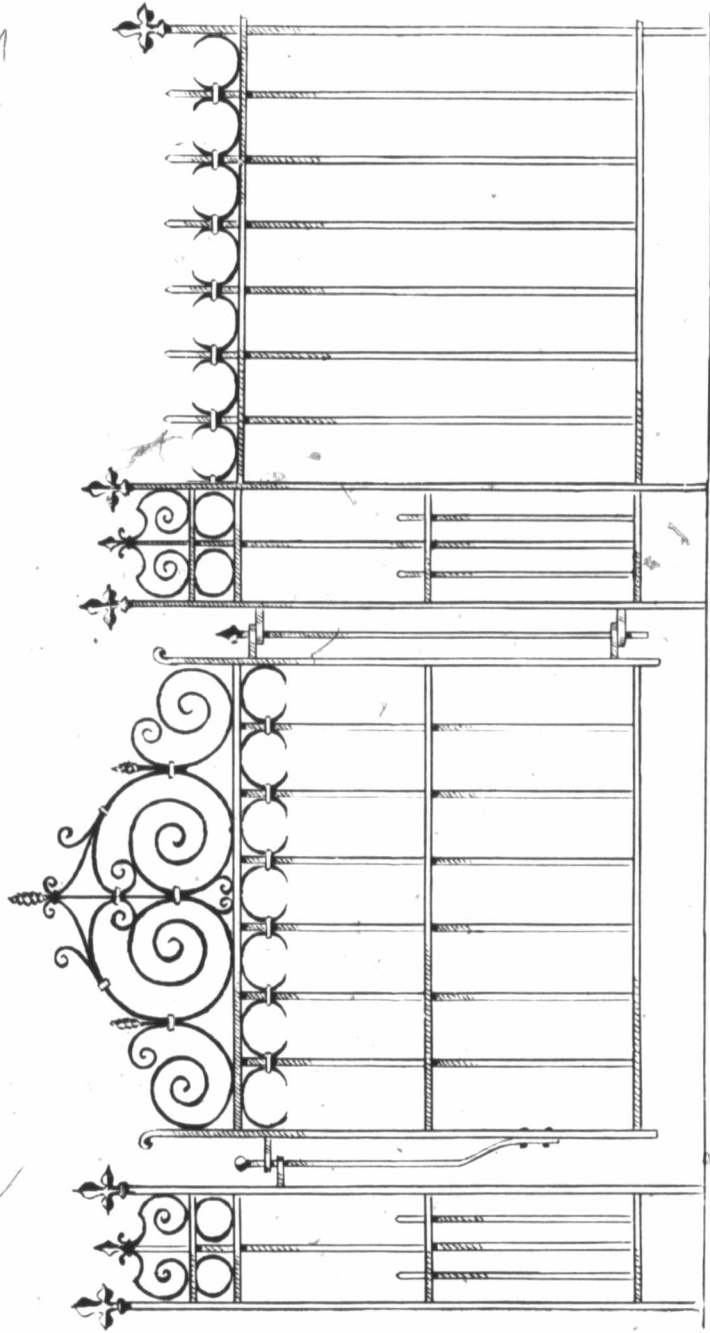


408
ENTRANCE GATES KNOX COLLEGE, TORONTO.



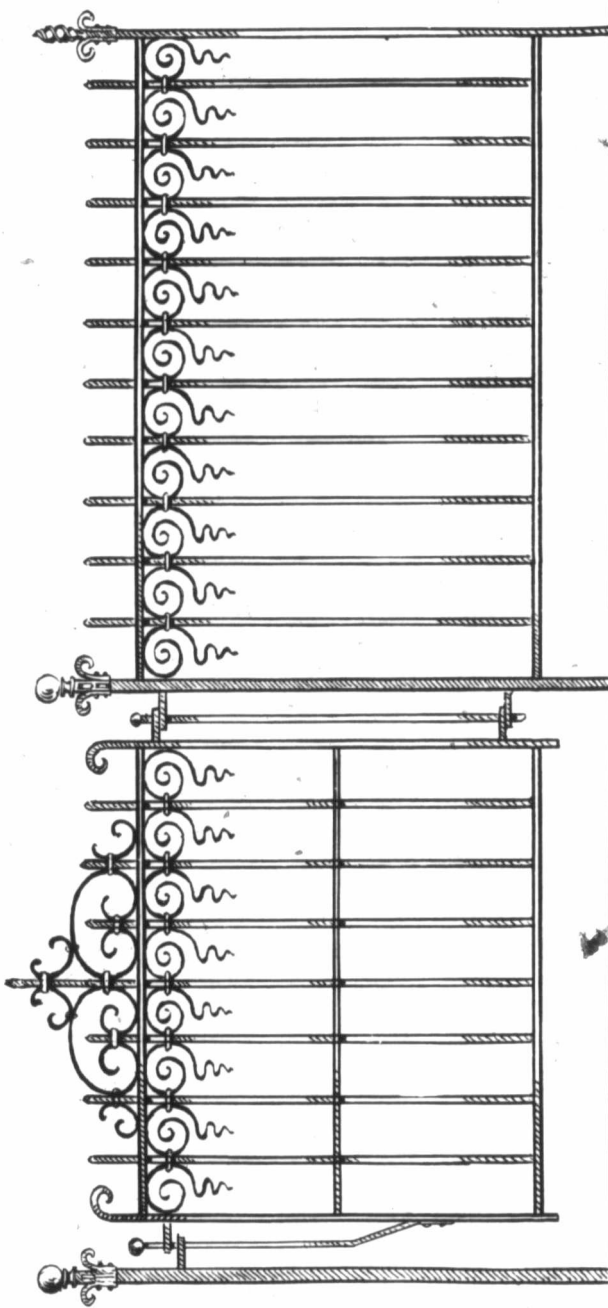
409

DRIVEWAY GATES AT THE RESIDENCE OF FREDERIC NICHOLLS, ESQ., "THE HOMEWOOD," TORONTO.



410

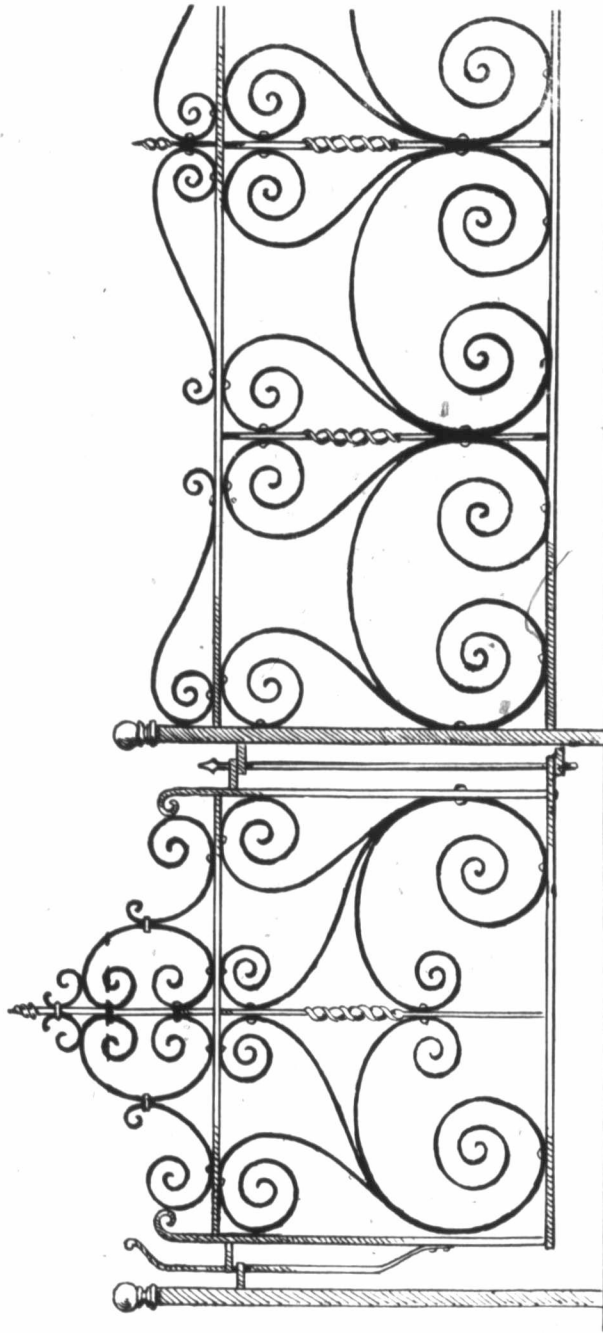
WROUGHT IRON FENCE AND GATE, MADE IN FOLLOWING SIZES:
 3 8 INCH SQUARE PICKETS, 2 1/2 INCHES HIGH, OR ABOUT 30 INCHES HIGH WHEN SET.
 7 16 " " " " 30 " " " " 31 " " " " " "
 7 16 " " " " 36 " " " " 40 " " " " " "
 1 2 " " " " 36 " " " " 40 " " " " " "
 1 2 " " " " 42 " " " " 46 " " " " " "



412

WROUGHT IRON FENCE AND GATE. MADE IN FOLLOWING SIZES:

3 8	INCH	SQUARE	PICKETS,	26	INCHES	HIGH,	OR	ABOUT	30	INCHES	HIGH	WHEN	SET.
7 16	"	"	"	33	"	"	"	"	34	"	"	"	"
7 16	"	"	"	36	"	"	"	"	40	"	"	"	"
1 2	"	"	"	35	"	"	"	"	40	"	"	"	"
1 2	"	"	"	42	"	"	"	"	45	"	"	"	"



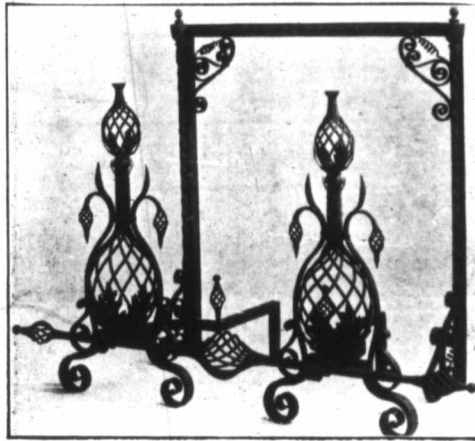
113

THIS DESIGN IS IN WROUGHT IRON; HEIGHT FROM GROUND TO TOP OF PICKET IS 2 FT. 9 IN.
THIS FENCE HAS A WROUGHT IRON FOUNDATION.



414

BALUSTRADE IN ORNAMENTAL IRON, CITY AND MUNICIPAL BUILDING, TORONTO.



415

FIRE DOGS AND FIRE PLACE FRAME.
BOWER-BARFFED.



416

FENDER IN ORNAMENTAL WROUGHT IRON AND BRASS.



417



418



419

ORNAMENTAL CAST IRON HITCHING POSTS.