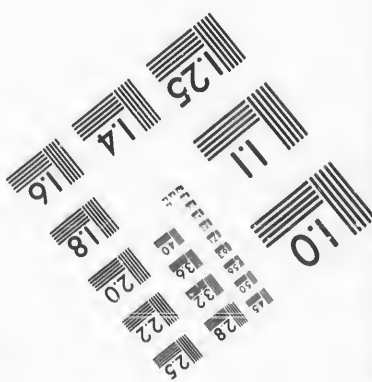
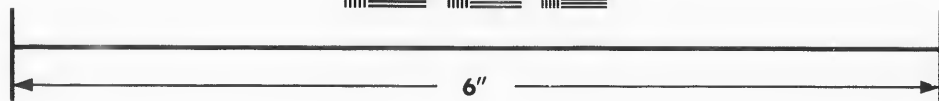
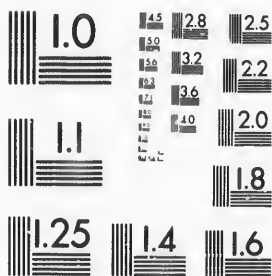


**IMAGE EVALUATION  
TEST TARGET (MT-3)**



**Photographic  
Sciences  
Corporation**

23 WEST MAIN STREET  
WEBSTER, N.Y. 14580  
(716) 872-4503

**CIHM/ICMH  
Microfiche  
Series.**

**CIHM/ICMH  
Collection de  
microfiches.**



**Canadian Institute for Historical Microreproductions / Institut canadien de microreproductions historiques**

**© 1987**

Technical and Bibliographic Notes/Notes techniques et bibliographiques

The Institute has attempted to obtain the best original copy available for filming. Features of this copy which may be bibliographically unique, which may alter any of the images in the reproduction, or which may significantly change the usual method of filming, are checked below.

L'Institut a microfilmé le meilleur exemplaire qu'il lui a été possible de se procurer. Les détails de cet exemplaire qui sont peut-être uniques du point de vue bibliographique, qui peuvent modifier une image reproduite, ou qui peuvent exiger une modification dans la méthode normale de filmage sont indiqués ci-dessous.

- Coloured covers/  
Couverture de couleur
- Covers damaged/  
Couverture endommagée
- Covers restored and/or laminated/  
Couverture restaurée et/ou pelliculée
- Cover title missing/  
Le titre de couverture manque
- Coloured maps/  
Cartes géographiques en couleur
- Coloured ink (i.e. other than blue or black)/  
Encre de couleur (i.e. autre que bleue ou noire)
- Coloured plates and/or illustrations/  
Planches et/ou illustrations en couleur
- Bound with other material/  
Relié avec d'autres documents
- Tight binding may cause shadows or distortion  
along interior margin/  
La reliure serrée peut causer de l'ombre ou de la  
distorsion le long de la marge intérieure
- Blank leaves added during restoration may  
appear within the text. Whenever possible, these  
have been omitted from filming/  
Il se peut que certaines pages blanches ajoutées  
lors d'une restauration apparaissent dans le texte,  
mais, lorsque cela était possible, ces pages n'ont  
pas été filmées.
- Additional comments:/  
Commentaires supplémentaires:

- Coloured pages/  
Pages de couleur
- Pages damaged/  
Pages endommagés
- Pages restored and/or laminated/  
Pages restaurées et/ou pelliculées
- Pages discoloured, stained or foxed/  
Pages décolorées, tachetées ou piquées
- Pages detached/  
Pages détachées
- Showthrough/  
Transparence
- Quality of print varies/  
Qualité inégale de l'impression
- Includes supplementary material/  
Comprend du matériel supplémentaire
- Only edition available/  
Seule édition disponible
- Pages wholly or partially obscured by errata  
slips, tissues, etc., have been refilmed to  
ensure the best possible image/  
Les pages totalement ou partiellement  
obscurcies par un feuillet d'errata, une pelure,  
etc., ont été filmées à nouveau de façon à  
obtenir la meilleure image possible.

This item is filmed at the reduction ratio checked below/  
Ce document est filmé au taux de réduction indiqué ci-dessous.

10X	14X	18X	22X	26X	30X
<input type="checkbox"/>	<input type="checkbox"/>	<input type="checkbox"/>	<input checked="" type="checkbox"/>	<input type="checkbox"/>	<input type="checkbox"/>
12X	16X	20X	24X	28X	32X

The copy filmed here has been reproduced thanks to the generosity of:

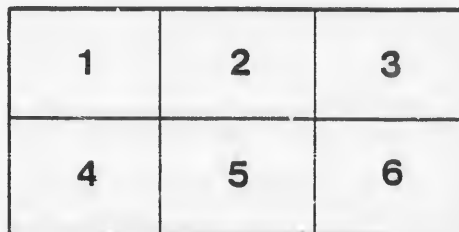
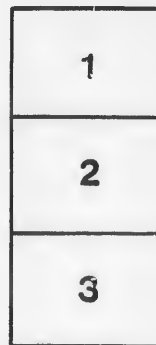
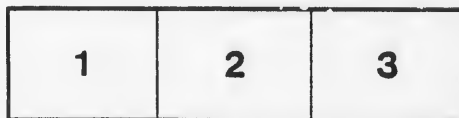
Library of Parliament and the  
National Library of Canada

The images appearing here are the best quality possible considering the condition and legibility of the original copy and in keeping with the filming contract specifications.

Original copies in printed paper covers are filmed beginning with the front cover and ending on the last page with a printed or illustrated impression, or the back cover when appropriate. All other original copies are filmed beginning on the first page with a printed or illustrated impression, and ending on the last page with a printed or illustrated impression.

The last recorded frame on each microfiche shall contain the symbol  $\rightarrow$  (meaning "CONTINUED"), or the symbol  $\nabla$  (meaning "END"), whichever applies.

Maps, plates, charts, etc., may be filmed at different reduction ratios. Those too large to be entirely included in one exposure are filmed beginning in the upper left hand corner, left to right and top to bottom, as many frames as required. The following diagrams illustrate the method:



L'exemplaire filmé fut reproduit grâce à la générosité de:

La Bibliothèque du Parlement et la  
Bibliothèque nationale du Canada

Les images suivantes ont été reproduites avec le plus grand soin, compte tenu de la condition et de la netteté de l'exemplaire filmé, et en conformité avec les conditions du contrat de filmage.

Les exemplaires originaux dont le couverture en papier est imprimée sont filmés en commençant par le premier plat et en terminant soit par la dernière page qui comporte une empreinte d'impression ou d'illustration, soit par le second plat, selon le cas. Tous les autres exemplaires originaux sont filmés en commençant par la première page qui comporte une empreinte d'impression ou d'illustration et en terminant par la dernière page qui comporte une telle empreinte.

Un des symboles suivants apparaîtra sur la dernière image de chaque microfiche, selon le cas: le symbole  $\rightarrow$  signifie "A SUIVRE", le symbole  $\nabla$  signifie "FIN".

Les cartes, planches, tableaux, etc., peuvent être filmés à des taux de réduction différents. Lorsque le document est trop grand pour être reproduit en un seul cliché, il est filmé à partir de l'angle supérieur gauche, de gauche à droite, et de haut en bas, en prenant le nombre d'images nécessaire. Les diagrammes suivants illustrent la méthode.

REPORT

9  
10

ON THE

Viger Copper Mine

CHESTER, C. E.

BY

M. HERBERT WILLIAMS, M. E.

SUPERINTENDANT OF THE HARVEY HILL MINE.

In addition to the Reports already published of Messrs. Petherick and Michel, and the second Report of assays, made by Mr. Chs. Robb, of the ores found on the VIGER-MINE, the proprietors feel a very high satisfaction in being able to lay before the public the present Report of an examination made of the property by Mr. Herbert Williams, M. E., Director of the Harvey-Hill Mine, Leeds, C. E.

A just appreciation of the importance of Mr. H. Williams' opinion may be formed, by the knowledge that the works which he has superintended at the Harvey-Hill Mine are pronounced by Sir Wm. Logan, in his "Geology of Canada" p. 724, "the most extensive which have as yet been made in the Eastern Townships. The shafts, and the long adit which has been opened, afford an opportunity not elsewhere presented for studying the structure of this mining region, and it is proposed therefore to give a detailed description of this mine. The accompanying plan and sections are reduced from drawings furnished to the Survey .....by Mr. Herbert Williams, the skilful director of the Harvey-Hill Mine."

The ores of copper found in Leeds and Chester belong both to the second synclinal of the Quebec group indicated by Sir Wm. Logan, affording thereby to Mr. Herbert Williams a great facility for expressing an opinion, on account of the similarity of the local circumstances.

HARVEY HILL COPPER MINES,

*Leeds, Megantic, C. E.*

Superintendent's Office, 10th January 1865.

JOSEPH BARSALOU, Esq.,

Montreal.

*Sir,*

Having, at the request of your Agent, Mr. A. Michel, visited the "Viger Copper Mine" in the Township of Chester, on the 6th instant, I now beg to hand you the following Report of my examination of same.

The nature and extent of the various openings and excavations made on the property having already been carefully detailed in the Reports of Messrs. Petherick and Michel, copies of which, in pamphlet form, were handed me by the latter gentleman, it is not necessary for me to repeat them on the present occasion.

I regret much that the season of the year would not permit of as careful a survey as I should have desired to make of this property. The snow was however cleared from the various openings made, by which was presented to view the best surface indications I have yet seen in the Eastern Townships, fully warranting the outlay of capital to prove the mine in depth, for which purpose some cross-cuts have already been commenced; and I would most strongly recommend that cross-cuts Nos. 4 and 6 should be vigorously pushed on, the very promising appearance at surface of the band or bed of copper-bearing schist,

that these two drifts will intersect, at moderate depths, fully justifying the outlay, with every prospect of finding copper ore in sufficient quantity to be highly remunerative to the adventurers in the undertaking.

The property possesses many natural advantages for economic mining, the high ground in which the bed is situate will admit of being wrought by adit or cross-cut to a very considerable depth.

The works already commenced have been laid out with care and regard to the future economic working of the property.

I may remark, that from the general appearance of the bed as well as the piles of undressed ore at surface, I consider the result of Mr. Robb's assays a very fair approximation of the average per centage of the mass, which can be dressed up to an average of 18 to 20 0/100 at small cost.

The roads being tolerably good, the cost of transport from the mine to the Grand Trunk Railway will not exceed \$3 per ton, the distance being about 15 miles only.

I am, Sir,

Your obedient servant,

(Signed,) HERBERT WILLIAMS,

*Mining Engineer.*



