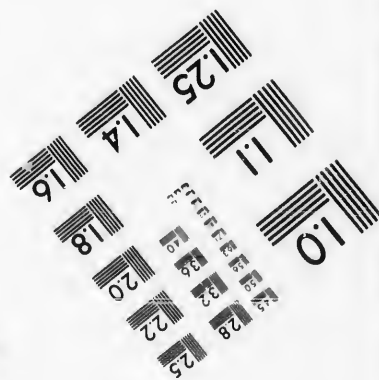
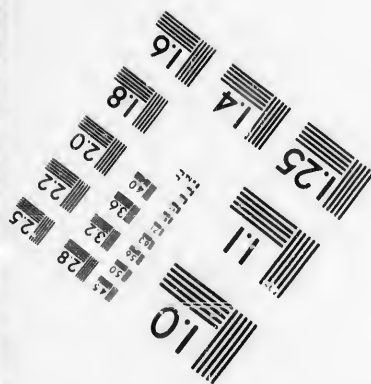
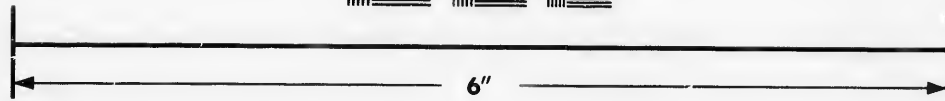
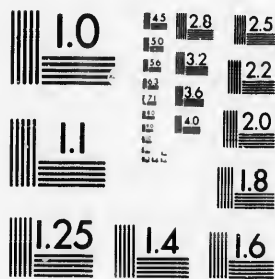


**IMAGE EVALUATION
TEST TARGET (MT-3)**



**Photographic
Sciences
Corporation**

23 WEST MAIN STREET
WEBSTER, N.Y. 14580
(716) 872-4503

**CIHM/ICMH
Microfiche
Series.**

**CIHM/ICMH
Collection de
microfiches.**



Canadian Institute for Historical Microreproductions / Institut canadien de microreproductions historiques

© 1986

Technical and Bibliographic Notes/Notes techniques et bibliographiques

The Institute has attempted to obtain the best original copy available for filming. Features of this copy which may be bibliographically unique, which may alter any of the images in the reproduction, or which may significantly change the usual method of filming, are checked below.

L'Institut a microfilmé le meilleur exemplaire qu'il lui a été possible de se procurer. Les détails de cet exemplaire qui sont peut-être uniques du point de vue bibliographique, qui peuvent modifier une image reproduite, ou qui peuvent exiger une modification dans la méthode normale de filmage sont indiqués ci-dessous.

- Coloured covers/
Couverture de couleur
- Covers damaged/
Couverture endommagée
- Covers restored and/or laminated/
Couverture restaurée et/ou pelliculée
- Cover title missing/
Le titre de couverture manque
- Coloured maps/
Cartes géographiques en couleur
- Coloured ink (i.e. other than blue or black)/
Encre de couleur (i.e. autre que bleue ou noire)
- Coloured plates and/or illustrations/
Planches et/ou illustrations en couleur
- Bound with other material/
Relié avec d'autres documents
- Tight binding may cause shadows or distortion along interior margin/
La reliure serrée peut causer de l'ombre ou de la distorsion le long de la marge intérieure
- Blank leaves added during restoration may appear within the text. Whenever possible, these have been omitted from filming/
Il se peut que certaines pages blanches ajoutées lors d'une restauration apparaissent dans le texte, mais, lorsque cela était possible, ces pages n'ont pas été filmées.
- Additional comments: /
Commentaires supplémentaires:

- Coloured pages/
Pages de couleur
- Pages damaged/
Pages endommagées
- Pages restored and/or laminated/
Pages restaurées et/ou pelliculées
- Pages discoloured, stained or foxed/
Pages décolorées, tachetées ou piquées
- Pages detached/
Pages détachées
- Showthrough/
Transparence
- Quality of print varies/
Qualité inégale de l'impression
- Includes supplementary material/
Comprend du matériel supplémentaire
- Only edition available/
Seule édition disponible
- Pages wholly or partially obscured by errata slips, tissues, etc., have been refilmed to ensure the best possible image/
Les pages totalement ou partiellement obscurcies par un feuillet d'errata, une pelure, etc., ont été filmées à nouveau de façon à obtenir la meilleure image possible.

Docket title page is bound in as last page in book but filmed as first page on fiche.

This item is filmed at the reduction ratio checked below/
Ce document est filmé au taux de réduction indiqué ci-dessous.

10X	12X	14X	16X	18X	20X	22X	24X	26X	28X	30X	32X
										✓	

The copy filmed here has been reproduced thanks to the generosity of:

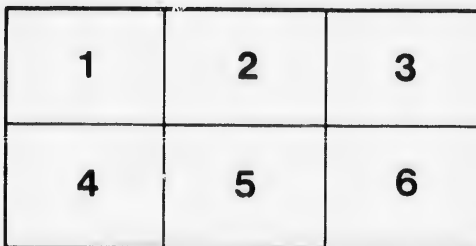
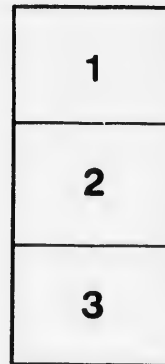
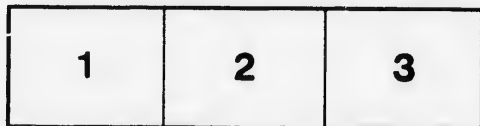
Harold Campbell Vaughan Memorial Library
Acadia University

The images appearing here are the best quality possible considering the condition and legibility of the original copy and in keeping with the filming contract specifications.

Original copies in printed paper covers are filmed beginning with the front cover and ending on the last page with a printed or illustrated impression, or the back cover when appropriate. All other original copies are filmed beginning on the first page with a printed or illustrated impression, and ending on the last page with a printed or illustrated impression.

The last recorded frame on each microfiche shall contain the symbol \rightarrow (meaning "CONTINUED"), or the symbol ∇ (meaning "END"), whichever applies.

Maps, plates, charts, etc., may be filmed at different reduction ratios. Those too large to be entirely included in one exposure are filmed beginning in the upper left hand corner, left to right and top to bottom, as many frames as required. The following diagrams illustrate the method:



L'exemplaire filmé fut reproduit grâce à la générosité de:

Harold Campbell Vaughan Memorial Library
Acadia University

Les images suivantes ont été reproduites avec le plus grand soin, compte tenu de la condition et de la netteté de l'exemplaire filmé, et en conformité avec les conditions du contrat de filmage.

Les exemplaires originaux dont la couverture en papier est imprimée sont filmés en commençant par le premier plat et en terminant soit par la dernière page qui comporte une empreinte d'impression ou d'illustration, soit par le second plat, selon le cas. Tous les autres exemplaires originaux sont filmés en commençant par la première page qui comporte une empreinte d'impression ou d'illustration et en terminant par la dernière page qui comporte une telle empreinte.

Un des symboles suivants apparaîtra sur la dernière image de chaque microfiche, selon le cas: le symbole \rightarrow signifie "A SUIVRE", le symbole ∇ signifie "FIN".

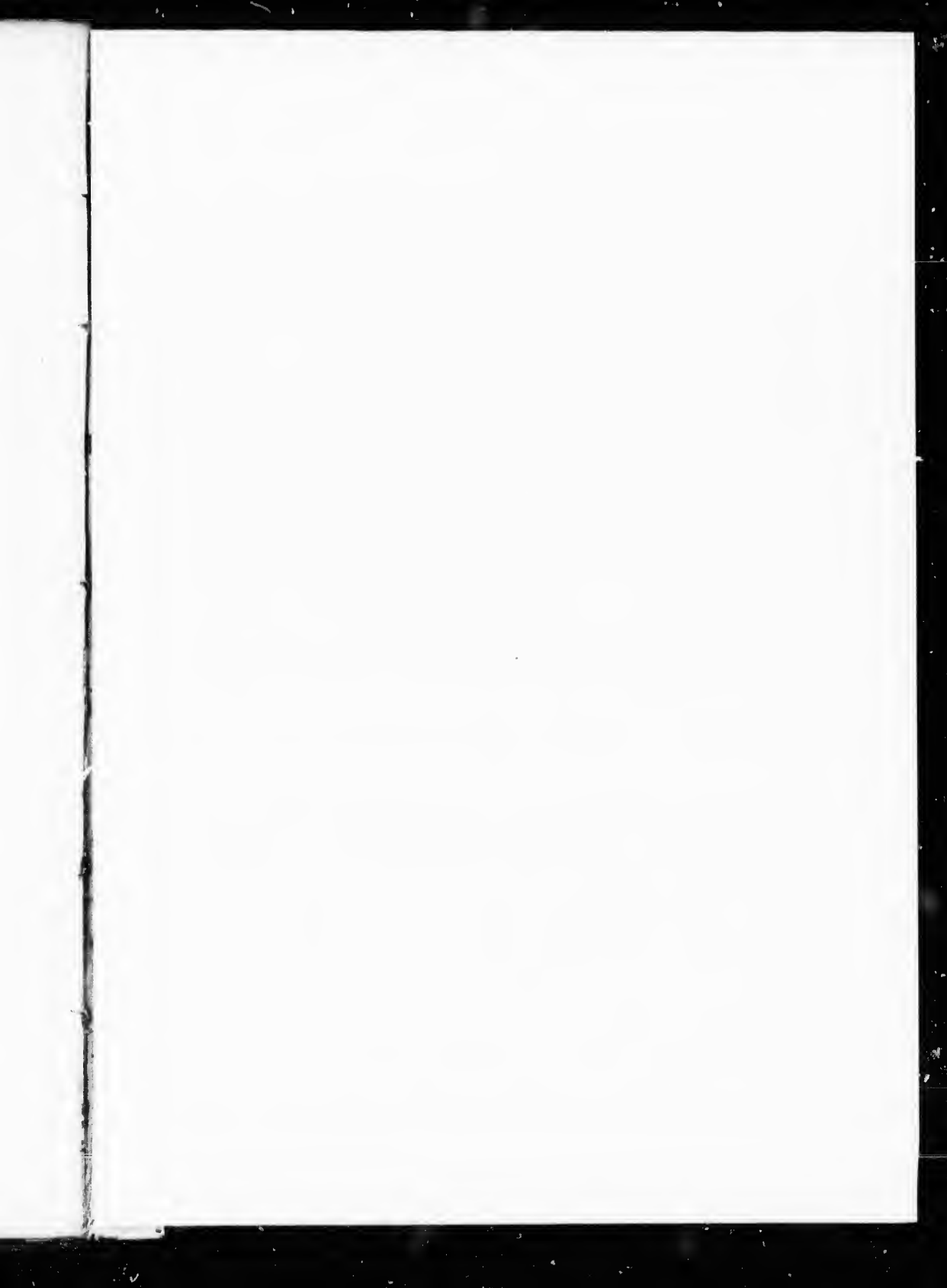
Les cartes, planches, tableaux, etc., peuvent être filmés à des taux de réduction différents. Lorsque le document est trop grand pour être reproduit en un seul cliché, il est filmé à partir de l'angle supérieur gauche, de gauche à droite, et de haut en bas, en prenant le nombre d'images nécessaire. Les diagrammes suivants illustrent la méthode.

WATER COMMUNICATIONS,
CANADA

ESTIMATES

Of the Expense of the Construction of Water
Communications in the Canadas.

*Ordered, by The House of Commons, in the Printer,
22 May 1857.*



ha

an
W
ex

C

ue
ne

**WATER COMMUNICATIONS
IN CANADA.**

ESTIMATES

Of the Expense of the Construction of Water Communications in the Canadas.

Colonial Department, }
Downing-Street, 22d May 1827. }

R. J. WILMOT HORTON.

Ordered, by The House of Commons, to be Printed, 22 May 1827.

DETAILED ESTIMATES and SURVEYS of the intended Canals in *Upper Canada*, have been ordered, but have not yet arrived.

The Rideau Canal is intended to open a Water Communication between Kingston and the Ottawa, a distance of 132 miles, by connecting together several pieces of Water lying in that direction; the length of the Cuts required to be made does not exceed 20 miles.

Kingston Mill Stream,
Cranberry Lake,
Mud Lake,
Rideau Lake, and
Rideau River.

The Estimate, as founded on the calculations of a civil engineer employed by the Colonial Government amounts to - - - - - £. 110,000

Already granted, 1826 - - - - - £. 5,000

To be appropriated in 1827, with a view to finishing the work in four years - - - - - £. 41,000.

To open a Communication between the Rideau and Lake St. Louis it has been necessary to make a Canal at Grenville of six miles long, the works of which are nearly completed, as well as Locks, &c. at the following places, viz.

Clute à Blondeau,
Carillon Rapids,
St. Anne's Rapids.

The Estimate for the Grenville Canal amounts to - - - - - £. 60,000

That for the Clute à Blondeau, Carillon, and St. Anne's - - - - - 50,000

Total - - - - - £. 110,000

Of this sum there have been already expended previous to }
and in 1825 - - - - - £. 40,000 } - - - £. 65,000
Granted in 1826 - - - - - 10,000 }
To be appropriated in 1827 - - - - - 15,000 }

Remains to be provided for in future years, for the navigation of the Ottawa River - - - - - } - - - £. 45,000

25367

2 ESTIMATE, WATER COMMUNICATIONS IN CANADA.

The Communication from the Ottawa to Montreal is completed by the Canal established between that place and Lake St. Louis at La Chine, which was finished in 1825 by an incorporated company, at a cost of - - - £. 105,000

Of which Government has paid for the right of passage, on the public service, of all articles required - £. 12,000

The right of collecting tolls on the navigation by the Ottawa and Rideau is retained by Government, and is calculated to yield a considerable and improving revenue, as the settlement advances on its banks.

The Welland Canal is now in progress to connect Lake Erie with Lake Ontario.

The work is constructing by a company, incorporated under the authority of an Act of the Provincial Legislature, passed in 1825, which authorizes the making a sloop navigation. The Canal is to communicate with Lake Ontario by the twelve mile creek; it will be conducted over the range of hills which raise the level of the adjoining country, and form the barrier of Lake Erie at the falls of Niagara by means of locks, until it meets the Chippawa at eight miles and a half from its mouth. It ascends the Chippawa about eleven miles, and from thence will join the Ooze upon Lake Erie at about one mile and a half from its mouth. The Ooze has a shifting bar at its entrance, the inconvenience of which the company expect to remedy by extending piers into deep water beyond the bar.

The estimated expense in constructing this Canal amounts to - - £. 147,240

Towards which His Majesty's government have agreed to afford the same degree of assistance which was given to that of La Chine, being a ninth of the estimated sum required in its completion. The sum therefore that His Majesty's government have agreed to furnish by four equal instalments, or sooner, if the Canal be finished at an earlier period, amounts to - - - - - £. 16,360

This agreement has been made upon condition that the company engage, by a Provincial Act, to construct the locks of the Canal of the width of at least twenty-two feet; and that all vessels and boats, being the property of His Majesty, and all other boats and vessels, when engaged in carrying government stores, may use the Welland Canal without being subject to the payment of any duty or toll whatsoever.

1860
12. May 1867
10
11
12
13
14
15
16
17
18
19
20
21
22
23
24
25
26
27
28
29
30
31
32
33
34
35
36
37
38
39
40
41
42
43
44
45
46
47
48
49
50
51
52
53
54
55
56
57
58
59
60
61
62
63
64
65
66
67
68
69
70
71
72
73
74
75
76
77
78
79
80
81
82
83
84
85
86
87
88
89
90
91
92
93
94
95
96
97
98
99
100

ESTIMATES. WATER COMMUNICATION IN CANADA.

