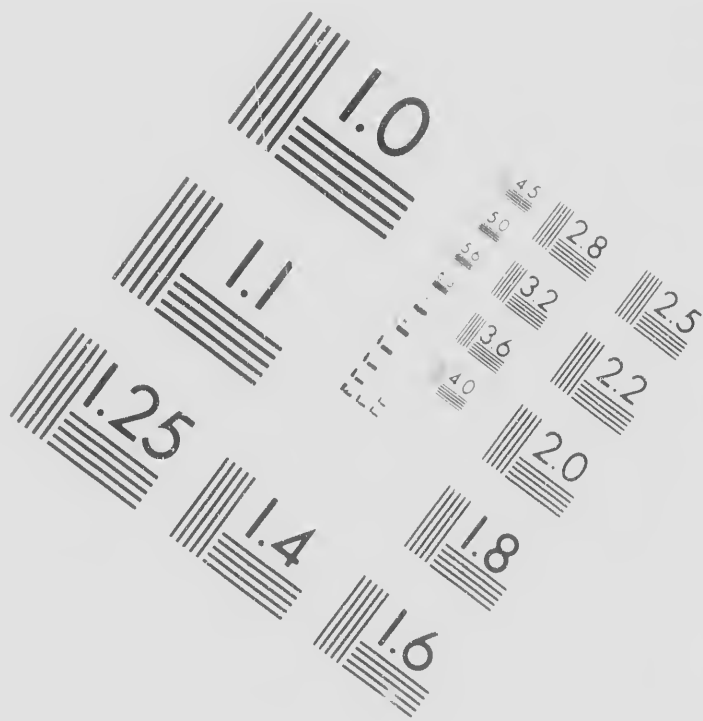


IMAGE EVALUATION TEST TARGET (M)



EVALUATION
NET (MT-3)



C
M
S



**CIHM/ICMH
Microfiche
Series.**

**CIHM/ICMH
Collection de
microfiches.**



Technical and Bibliographic Notes

The Institute has attempted to obtain the best original copy available for filming. Features of this copy which may be bibliographically unique, which may alter any of the images in the reproduction, or which may significantly change the usual method of filming, are checked below.

- Coloured covers/
Couverture de couleur
- Covers damaged/
Couverture endommagée
- Covers restored and/or laminated/
Couverture restaurée et/ou pelliculée
- Cover title missing/
Le titre de couverture manque
- Coloured maps/
Cartes géographiques en couleur
- Coloured ink (i.e. other than blue or black)/
Encre de couleur (i.e. autre que bleue ou noire)
- Coloured plates and/or illustrations/
Planches et/ou illustrations en couleur
- Bound with other material/
Relié avec d'autres documents

nic Notes/Notes techniques et bibliographiques

t
f this

nge
ow.

L'Institut a microfilmé le meilleur exemplaire qu'il lui a été possible de se procurer. Les détails de cet exemplaire qui sont peut-être uniques du point de vue bibliographique, qui peuvent modifier une image reproduite, ou qui peuvent exiger une modification dans la méthode normale de filmage sont indiqués ci-dessous.

- Coloured pages/
Pages de couleur
- Pages damaged/
Pages endommagées
- Pages restored and/or laminated/
Pages restaurées et/ou pelliculées
- Pages discoloured, stained or foxed/
Pages décolorées, tachetées ou piquées
- Pages detached/
Pages détachées
- Showthrough/
Transparence
- Quality of print varies/
Qualité inégale de l'impression
- Includes supplementary material/
Comprend du matériel supplémentaire

ck)/
(noire)

Th
to

Th
po
of
fil

Or
be
th
sic
ot
fir
sic
or

M
dit
en
be
rig

The copy filmed here has been reproduced thanks to the generosity of:

Library of Congress
Photoduplication Service

The images appearing here are the best quality possible considering the condition and legibility of the original copy and in keeping with the filming contract specifications.

Original copies in printed paper covers are filmed beginning with the front cover and ending on the last page with a printed or illustrated impression, or the back cover when appropriate. All other original copies are filmed beginning on the first page with a printed or illustrated impression, and ending on the last page with a printed or illustrated impression.

Maps, plates, charts, etc., may be filmed at different reduction ratios. Those too large to be entirely included in one exposure are filmed beginning in the upper left hand corner, left to right and top to bottom, as many frames as

L'exemplaire filmé fut reproduit grâce à la générosité de:

Library of Congress
Photoduplication Service

Les images suivantes ont été reproduites avec le plus grand soin, compte tenu de la netteté de l'exemplaire original et de la conformité avec les conditions du contrat de filmage.

Les exemplaires originaux en papier imprimé sont filmés à partir du premier plat et en terminant sur la dernière page qui compose le document, soit d'impression ou d'illustration, selon le cas. Tous les autres exemplaires originaux sont filmés en commençant par la première page qui compose le document, soit d'impression ou d'illustration, et en terminant sur la dernière page qui compose le document, soit d'impression ou d'illustration.

Les cartes, planches, tableaux, etc., peuvent être filmés à des taux de réduction différents. Lorsque le document est trop grand pour être reproduit en une seule prise, il est filmé à partir de l'angle supérieur gauche, de gauche à droite et de haut en bas, en autant de

é fut reproduit grâce à la

brary of Congress
hotoduplication Service

ntes ont été reproduites avec le
compte tenu de la condition et
'exemplaire filmé, et en
les conditions du contrat de

originaux dont la couverture en
née sont filmés en commençant
at et en terminant soit par la
i comporte une empreinte
d'illustration, soit par le second
. Tous les autres exemplaires
més en commençant par la
ui comporte une empreinte
d'illustration et en terminant par
qui comporte une telle

ches, tableaux, etc., peuvent être
x de réduction différents.

ment est trop grand pour être
seul cliché, il est filmé à partir
eur gauche, de gauche à droite,



(CIRCULAR)

SIR,

I now proceed to give some additional instructions in relation to the cargo Act of the 25th instant.

The fourth, fifth, seventh, eighth, fourteenth, and fifteenth sections of the Act, in their nature, or do not relate to your duties.

The Comptroller will give special instructions in relation to the sixth and seventh sections. I will only observe that great caution will be required in the application of the eighth section, and that the thirteenth gives no authority for boarding vessels going to other districts, articles of domestic produce being instead of being obliged to unlade them in conformity with the Act of the 12th March last.

Vessels may in relation to the cargo laws, be divided into three classes:

1. Vessels owned by foreigners in whole or in part. These were already forbidden to take any cargo or to trade with the coast of the United States, and of the last law altogether forbidden to go from one port to another in the same.

2. Boats or vessels exempted by the second section of the Act from the obligation of giving any bond whatever under the provisions of the last act.

3. Vessels whose employment is confined to the coast and inland lakes within the jurisdiction of the United States, and which are not employed in any foreign trade. The first, third and fourth sections of the Act of the 25th instant, relate to vessels of that description. In order to prevent fraud, the first section may be attended with as little inconvenience as possible, whenever necessary, to appoint temporary inspectors to examine the manifests of the cargo, to grant clearances, and also to issue certificates of landing for goods brought from other districts. Duplicates of these certificates will be sent to the collector or surveyor, in order to be signed by him in the district from which the cargo was imported. They will also be sent to the collector or surveyor, the manifests of cargoes exported from the same district, and certificates of landing, will shew whether the parties named in the manifest as the ostensible port of destination. It may not be necessary to observe that the collector should actually be present when the cargo is landed: he must take as evidence of the fact, a certificate from

RCULAR.)

TREASURY DEPARTMENT,

APRIL 28TH, 1808.

nal instructions respecting the Supplementary Em-

arteleenth, and fifteenth sections, either are of a local

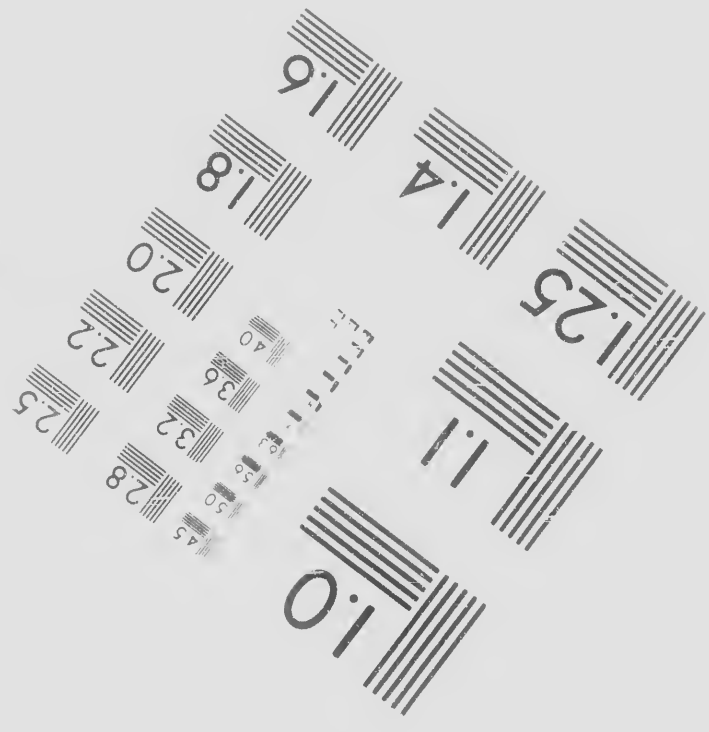
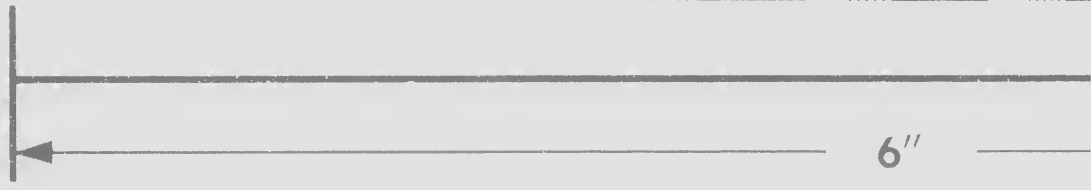
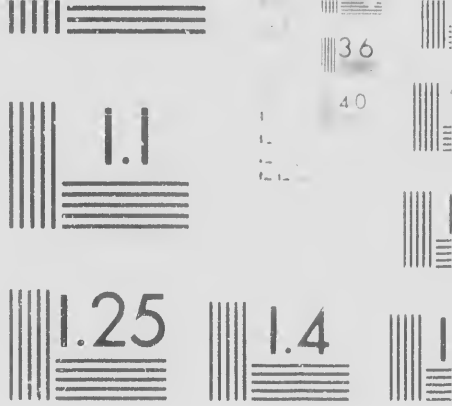
ctions respecting the eighth and thirteenth sec-
on will be necessary to prevent abuses under the
es no additional privilege but that of keeping on
les of domestic produce later before the embargo,
conformity with the 3d section of the act of the

o laws, be arranged under four classes.

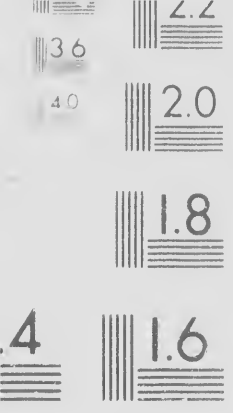
hole or in part, or sailing under a foreign flag.
cargo or specie, and they are by the ninth section
from one port of the United States, to another port

second section of the act of 12th March last, from
e under the embargo laws. These are not affected

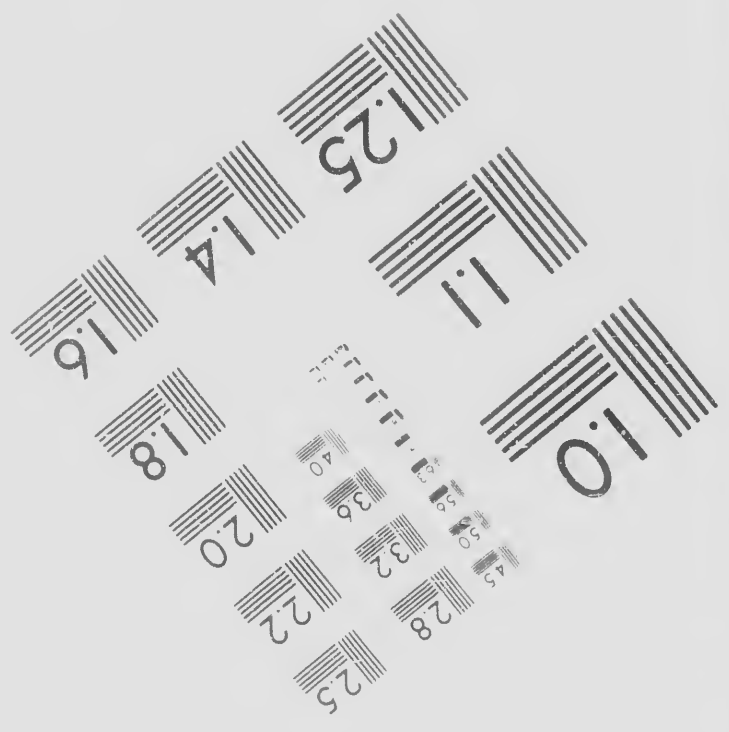
ined to the navigation of bays, sounds, rivers and
States, and which give a general bond no. to be
, third and tenth sections of the act of the 25th
n. In order that the obligation imposed by the
e inconvenience as possible, you will be pleased,
inspectors at proper places, with power to receive
and also to give certificates of the landing of car-
ates of those certificates should by them be sent to
igned by him and transmitted to the collector of the
d. They should likewise transmit to the collector
ited from the district. These compared with the
he parties have actually carried the cargoes to the
be necessary in many instances, that the inspectors
s funded: they may, in such cases as you will di-
-from any coastwise citizen. And there may



Photographic
Sciences
Corporation



Canadian Institute



23 WEST MAIN STREET
WEBSTER, N.Y. 14580
(716) 872-4503





Institute for Historical Microreproductions / Institut canadien de microreproductions historiques

© 1986

historiques

6

- Coloured ink (i.e. other than blue or black)/
Encre de couleur (i.e. autre que bleue ou noire)
- Coloured plates and/or illustrations/
Planches et/ou illustrations en couleur
- Bound with other material/
Relié avec d'autres documents
- Tight binding may cause shadows or distortion
along interior margin:/
La reliure serrée peut causer de l'ombre ou de la
distorsion le long de la marge intérieure
- Blank leaves added during restoration may
appear within the text. Whenever possible, these
have been omitted from filming/
Il se peut que certaines pages blanches ajoutées
lors d'une restauration apparaissent dans le texte
mais, lorsque cela était possible, ces pages n'ont
pas été filmées.
- Additional comments:/ CIHM no. 60558
Commentaires supplémentaires

This item is filmed at the reduction ratio checked below
Ce document est filmé au taux de réduction indiqué ci

10X 14X 18X

12X 16X 20X

(k)/
noire)

Showthrough/
Transparence

Quality of print varies/
Qualité inégale de l'impression

Includes supplementary material/
Comprend du matériel supplémentaire

tortion

Only edition available/
Seule édition disponible

ou de la

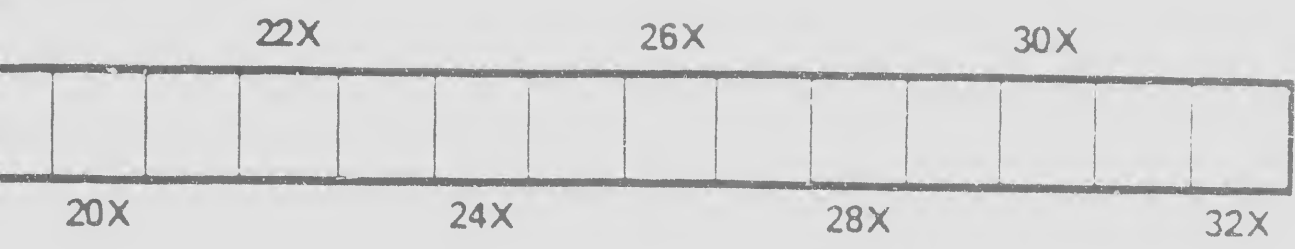
Pages wholly or partially obscured by errata
slips, tissues, etc., have been refilmed to
ensure the best possible image/
Les pages totalement ou partiellement
obscurcies par un feuillet d'errata, une pelure,
etc., ont été filmées à nouveau de façon à
obtenir la meilleure image possible.

ay
le, these

ajoutées
s le texte,
ges n'ont

no. 60558

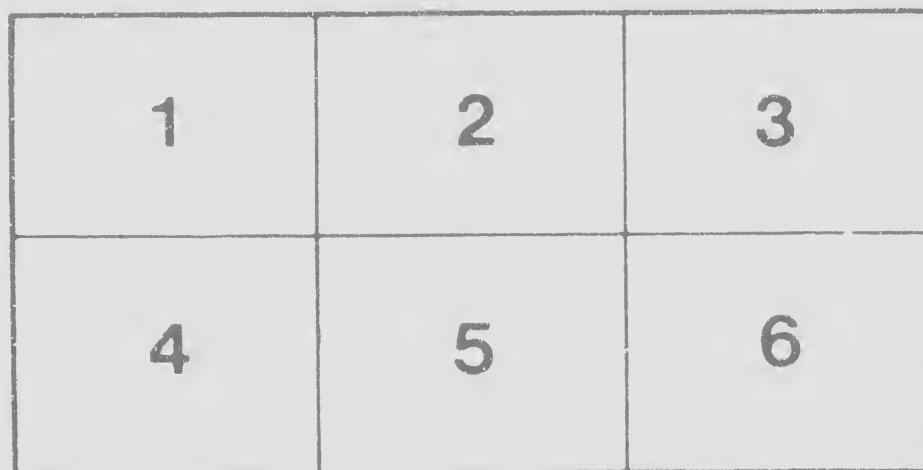
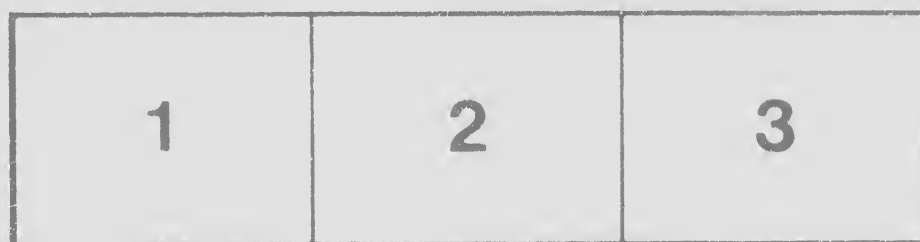
ked below/
ndiqué ci-dessous.



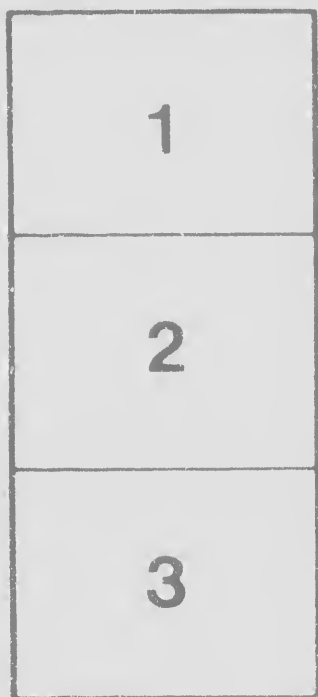
Ma
dif
en
be
rig
rec
me

Maps, plates, charts, etc., may be filmed at different reduction ratios. Those too large to be entirely included in one exposure are filmed beginning in the upper left hand corner, left to right and top to bottom, as many frames as required. The following diagrams illustrate the method:

Les cartes, planches, tableaux, etc., peuvent être filmés à des taux de réduction différents. Lorsque le document est trop grand pour être inclus dans une seule exposition, il est filmé à partir de l'angle supérieur gauche, de gauche à droite et de haut en bas, en prenant le nombre d'images nécessaire. Les diagrammes suivants illustrent la méthode.



hes, tableaux, etc., peuvent être
de réduction différents.
ment est trop grand pour être
seul cliché, il est filmé à partir
leur gauche, de gauche à droite,
s, en prenant le nombre
aire. Les diagrammes suivants
ode.



whenever necessary, to appoint temporary inspectors of manifests of the cargo, to grant clearances, and also to goe brought from other districts. Duplicates of the the collector or surveyor, in order to be signed by the district from which the cargo was imported. They or surveyor, the manifests of cargoes exported from certificates of landing, will shew whether the parties ostensible port of destination. It may not be necessary should actually be present when the cargo is loaded: rect, take as evidence of the fact, a certificate from an also be situations, where such evidence may be received an inspector. You will, upon the whole, in those cases adjacent districts in the same bay or river, and where every facility which is not inconsistent with the provisions fee for a clearance, provided by the tenth section, approved and will, it is presumed, be amply sufficient to compensate from the obligation of giving any bond are, as well from the operation of those three sections.

4. All other vessels owned by citizens of the United give, on each voyage, a special bond for the landing give the bond (D.) formerly transmitted. The second sets, and requires no explanation.

The sixth section of the act forbids the departure President, of any vessel having a cargo on board, for a foreign nation. Exclusively of the districts on the communication from your district, there are but four of them Maine, St. Mary's in Georgia, Mobile or Fort St. The President hereby permits all vessels bound to them had been previously announced, to sail with such a cargo day on which you will receive this letter, and to take any foreign articles. But this permission does not extend per to detain under the authority vested by the eleven for the shipment of other additional articles on board vessels all subsequent applications for permission to send vessels and all applications for permission to send vessels to Port be made through you; and you will transmit the information, together with your opinion thereon, and such recommendations on the applications, to the Secretary of the Treasury, to obtain, the tonnage of the vessel and the articles intended.

The eleventh section of the act being intended to embargo, the President confidently expects that it will be vigilance, and strictness: and as the decision, in all cases rest with him, it is proper to state what, in a general manner, afford sufficient causes for detention.

1. Direct evidence of any kind, arising either from the suggestions of others, and which ought always suffered to depart

inspectors at proper prices, and power to receive and also to give certificates of the landing of cargoes of those certificates should by them be sent to the collector of the duty and transmitted to the collector of the duty. They should likewise transmit to the collector of the duty from the district. These compared with the provisions have actually carried the cargo to the collector in many instances, that the inspectors intended: they may, in such cases as you will cite from any respectable citizen. And there may be received by you, without the intervention of the collector of those districts which have a great intercourse with the coast and where you apprehend no fraud or evasion, give the provisions of the first section. The reduced duty applies solely to vessels of that description, not to compensate the inspectors. Vessels exempt are, as well as packets and ferry-boats, excepted

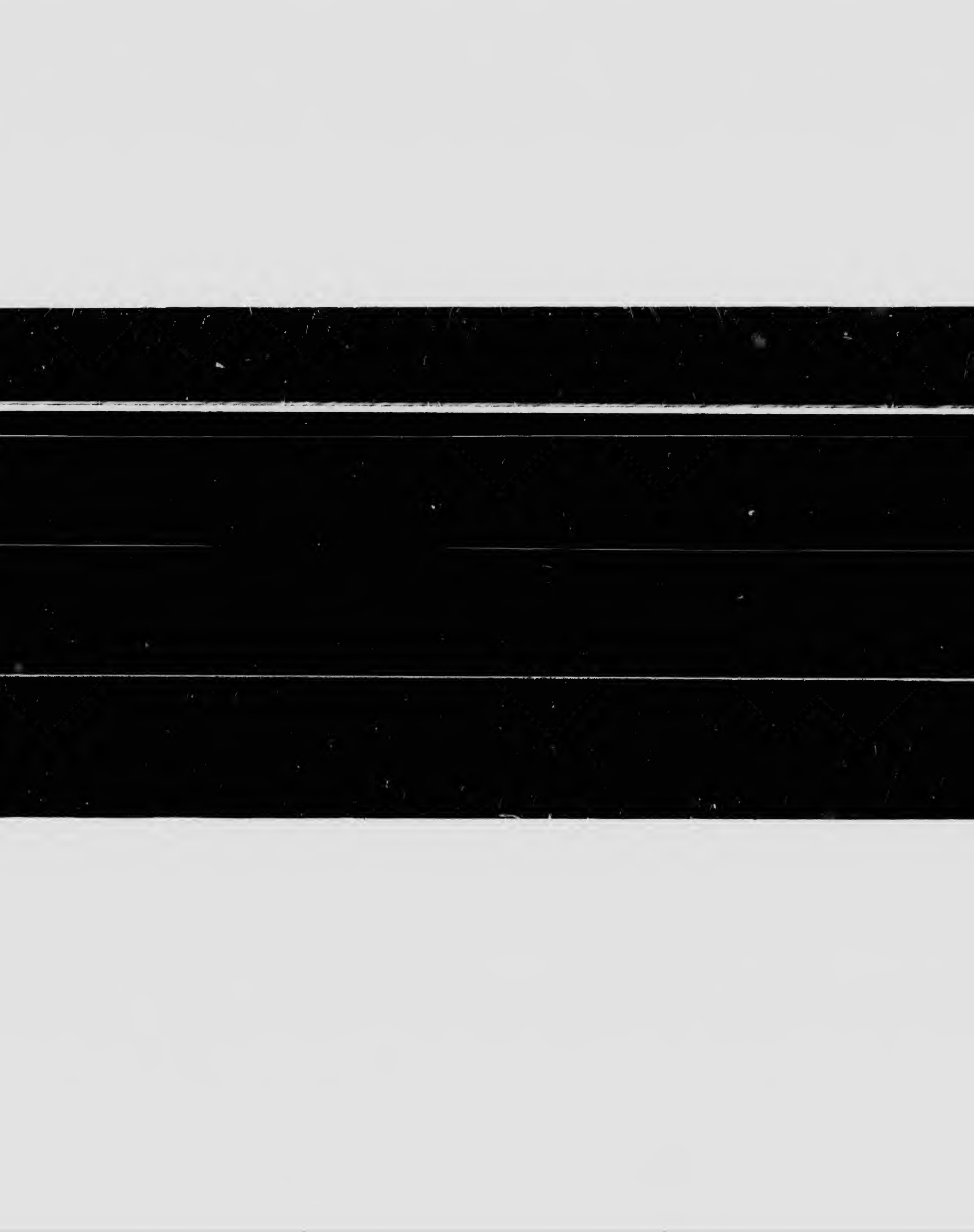
of the United States, embracing all vessels which are engaged in the landing of the cargo, and fishing vessels which are engaged in the landing of the cargo. The second section of the act relates to those ves-

sels which are engaged in the landing of the cargo, without a special permission of the collector of the duty, for any district adjacent to the territory of the United States, with which there is no water communication of that description, viz. Passamaquoddy, in the State of Maine, and Mobile, in the State of Alabama, and to the last mentioned port, whose destination is such cargo as they are actually on board on the day of their departure, and to take in addition thereto stores, bricks, and other articles, and does not extend to any vessel which may be proposed to be employed in the trade. And applications for board vessels thus permitted to go to New-Orleans, to send vessels with any cargo whatever to that port, and to Passamaquoddy, St. Mary's or Mobile, must be referred to the President's decision, to this department, and such observations as you may think proper to make, the names of the parties, vessels, and cargoes intended to be shipped.

It is intended effectually to prevent any evasion of the provisions that it will be carried in or effect with fidelity, viz. in all cases of detention under that section, will be referred to the President's decision, to this department, and such observations as you may think proper to make, the names of the parties, vessels, and cargoes intended to be shipped.

It is intended effectually to prevent any evasion of the provisions that it will be carried in or effect with fidelity, viz. in all cases of detention under that section, will be referred to the President's decision, to this department, and such observations as you may think proper to make, the names of the parties, vessels, and cargoes intended to be shipped.

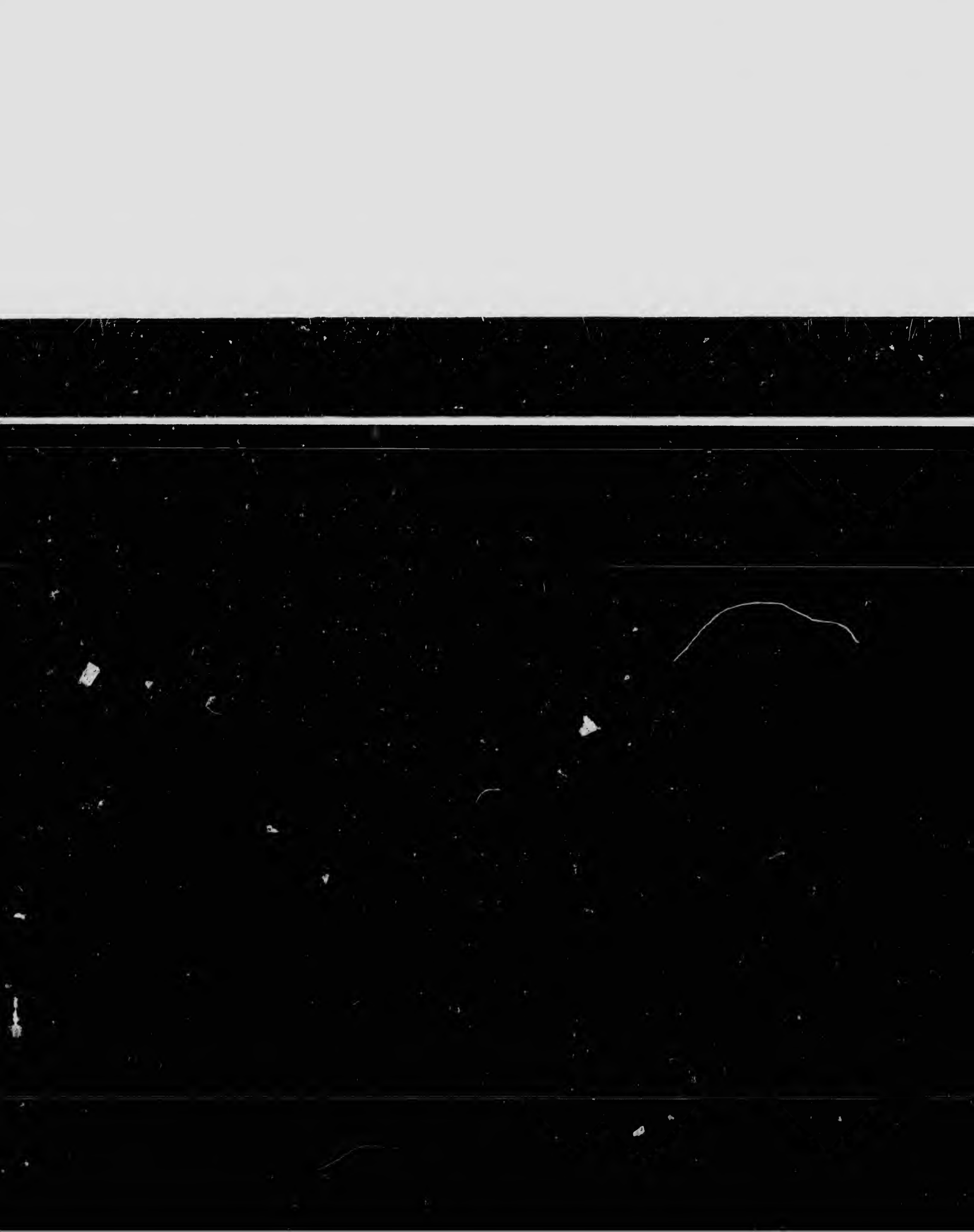


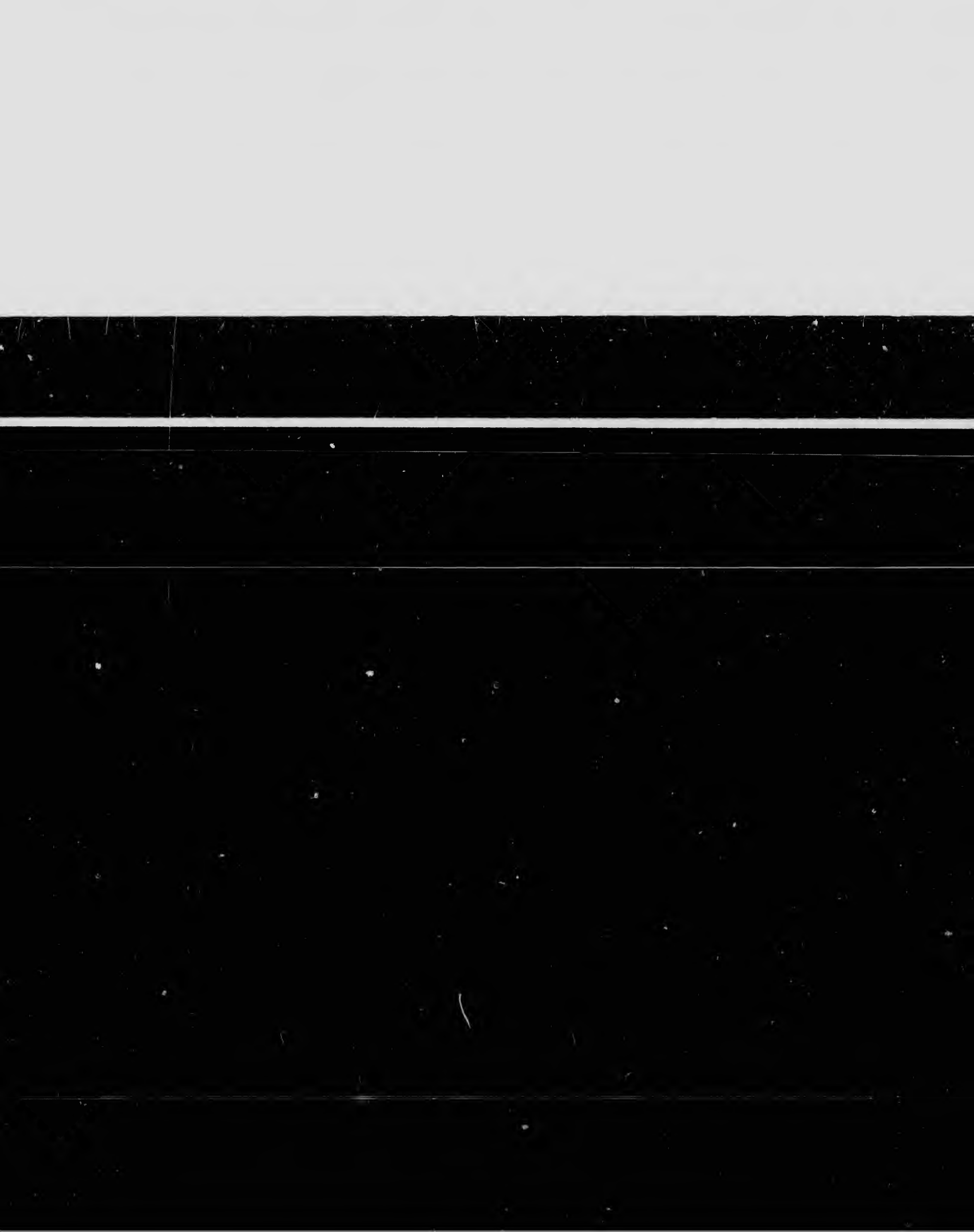




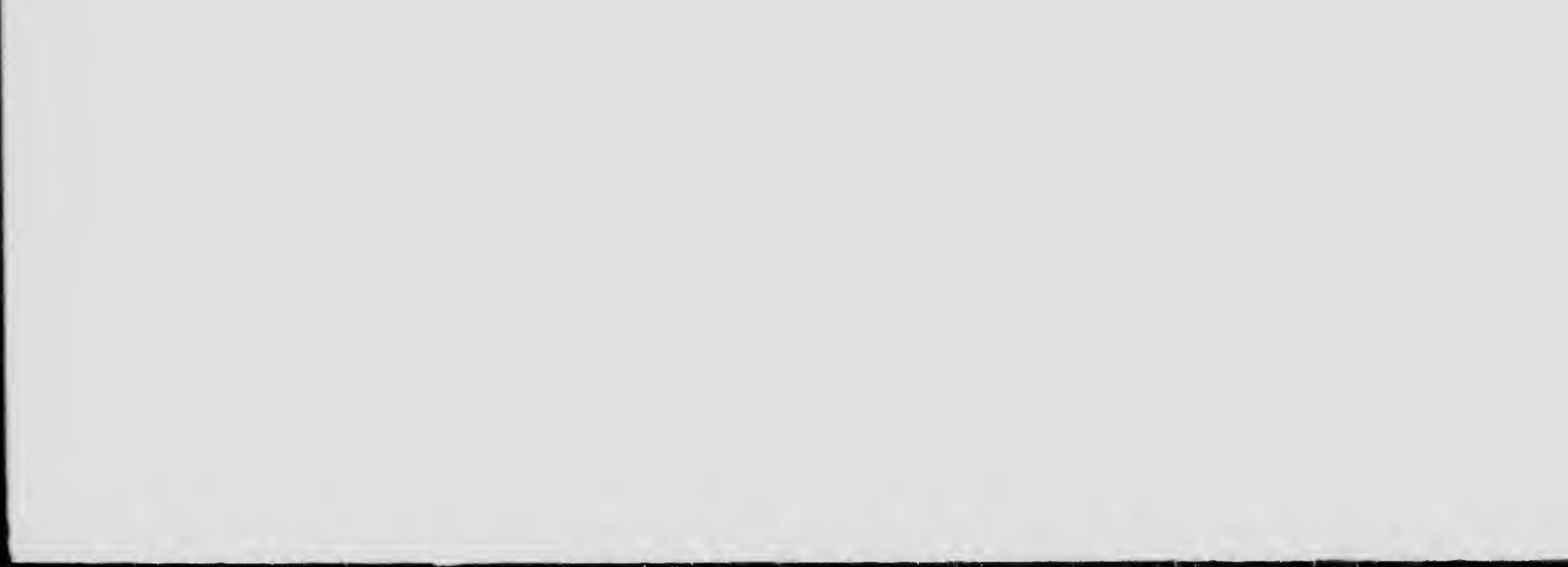












31263





2. Unusual
place of destination
will easily excite
attention or demand
timber and lumber
larly suspicious
the port or destination
not justify the

3. Former
act, of the act
freighters, or
all the shipments
Nantucket, N
embargo, the
cause of apprehension
should be ascertained
be obtained.

4. Connections
sons employed
reason to believe
and the movements
be strictly watched

It must,
it may be proper
seems proper

I beg leave
ballast under the

The Collector

2. Unusual shipments either as to the species or quantity of articles shipped, or to the port of destination. Your practice and knowledge of the usual course of the coasting trade will easily enable you to judge whether the shipments be intended for the actual consumption or demand of the ostensible port of destination. Provisions of every description, masts, sugar and lumber, naval stores, and all articles consumed in the West-Indies, are particularly suspicious. When shipments exceed the moderate quantities which may be wanted at such port or destination, and are usually shipped there, or when the prices at such place do not justify the voyage, there is just cause for investigation and detention.

3. Former evasions or violations of the embargo, of the non intercourse San Domingo law, of the acts prohibiting the slave trade, or of the revenue laws. The owners, captains, pilots, or persons connected with former illegal acts, (amongst which may be included the shipments to Passamaquoddy or St. Mary's since the embargo took place, those from New-York, New-Orleans, and several other places to foreign ports, with knowledge of the embargo, the sailing of vessels since *blown off* to the West-Indies, &c.) having given just cause of apprehending similar conduct hereafter, shipments in which they are concerned should be arrested until a full investigation has taken place, and the President's decision may be obtained.

4. Connections in business or in shipments with agents of foreign nations, or with persons employed by such agents. The extraordinary shipments to particular quarters give reason to believe that they were made by such agents, or under arrangements with them; the movements of persons connected with or acting under those agents should therefore be strictly watched.

It must, however, be fully understood, that it is not intended to limit the cases where it may be proper to detain vessels, to those just enumerated; but that on the contrary, it is proper that you should detain, investigate and refer in all doubtful cases.

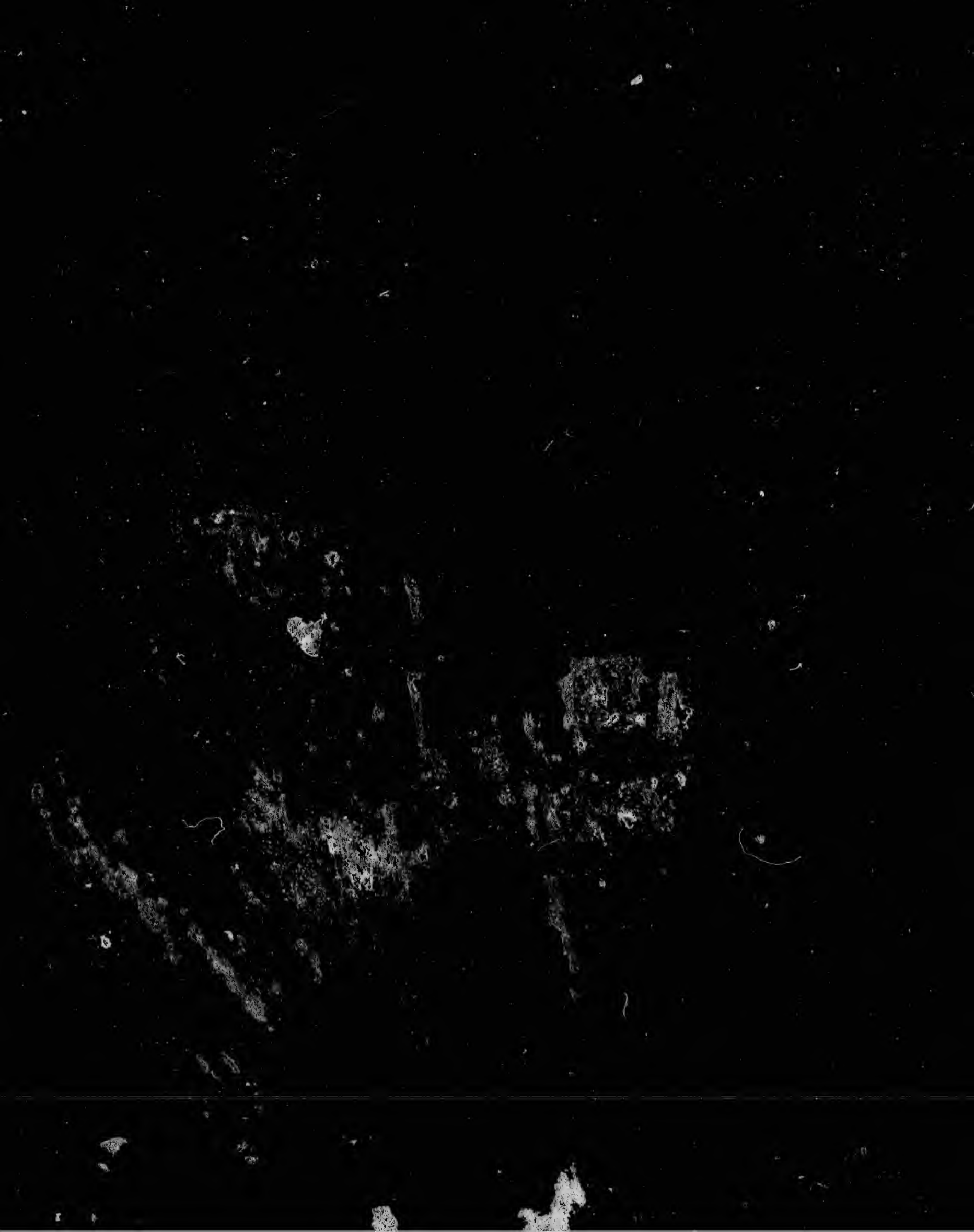
I beg leave to repeat, that no permission will hereafter be granted, to send out vessels in violation of the act under the 7th section of the act of 12th March last.

I am, respectfully,

Your obedient servant,

Collector of



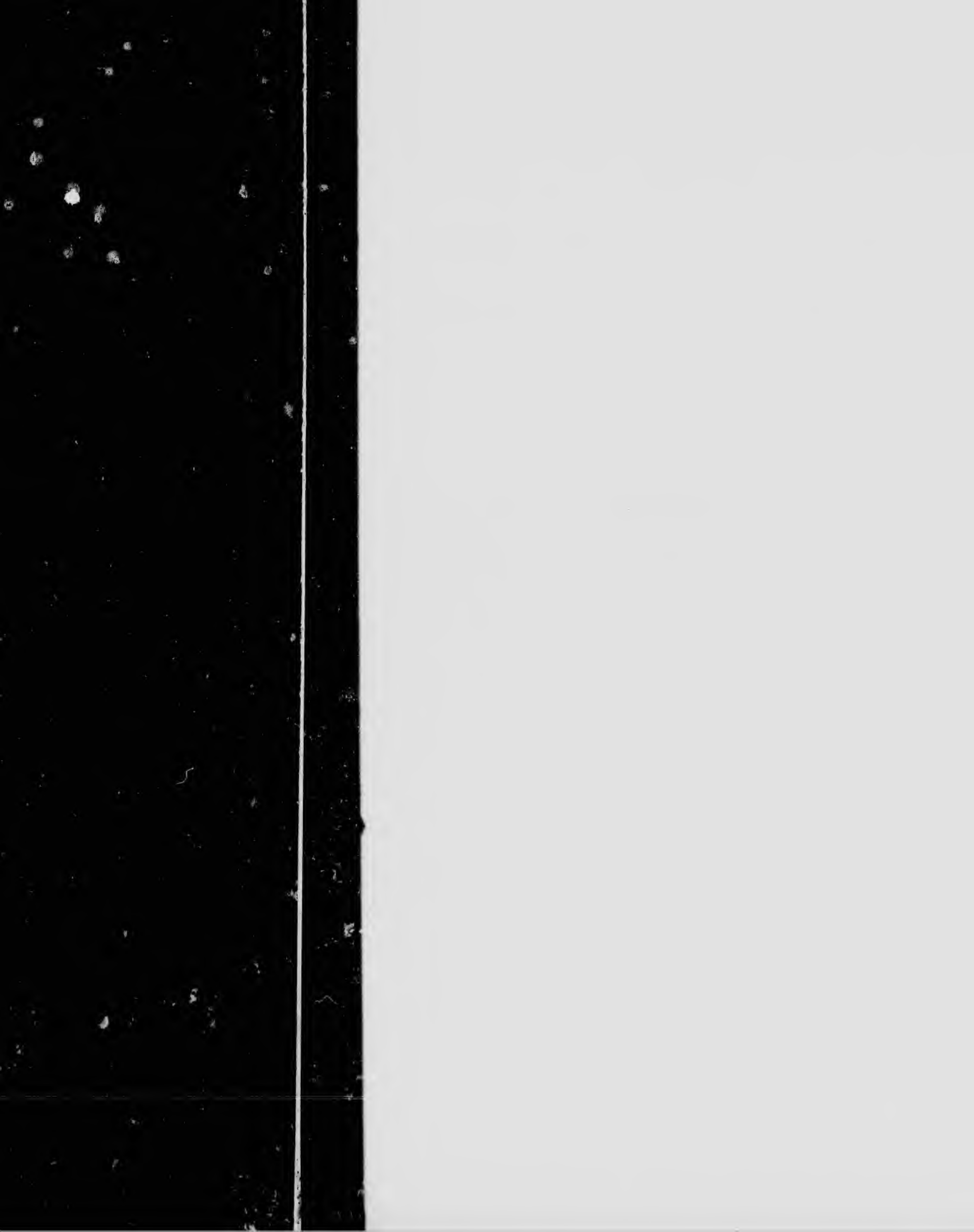












P. S. T
lessened by the
the amount of
year, his opinion
be pleased to
months ending

P. S. The House of Representatives, sensible that the emoluments of office might be increased by the Congress, has directed the Secretary of the Treasury to report, together with a list of emoluments of the collectors, naval officers and surveyors for the present year, his opinion of the cases where a temporary increase may be necessary. The officers will be pleased to transmit as early as possible, the amount of the said emoluments, for the year ending on the 30th of September next.



