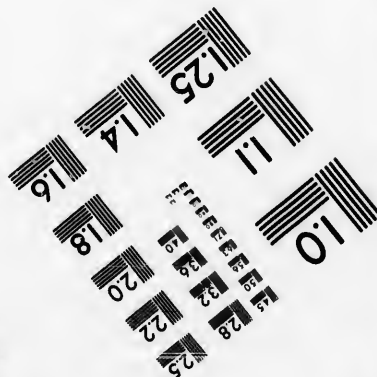
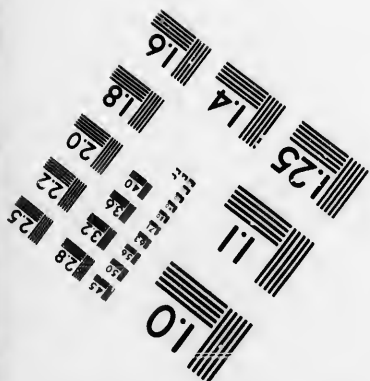
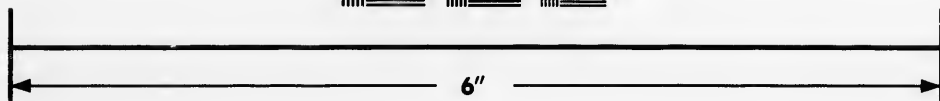
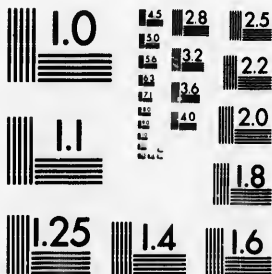


**IMAGE EVALUATION
TEST TARGET (MT-3)**



**Photographic
Sciences
Corporation**

23 WEST MAIN STREET
WEBSTER, N.Y. 14580
(716) 872-4503

14 12.8
13 12
12 11.6
11 11
10 10.4
9 9.8
8 9.2
7 8.6
6 8
5 7.4
4 6.8
3 6.2
2 5.6
1 5

**CIHM/ICMH
Microfiche
Series.**

**CIHM/ICMH
Collection de
microfiches.**



Canadian Institute for Historical Microreproductions / Institut canadien de microreproductions historiques

11
10
9
8
7
6
5
4
3
2
1

© 1987

Technical and Bibliographic Notes/Notes techniques et bibliographiques

The Institute has attempted to obtain the best original copy available for filming. Features of this copy which may be bibliographically unique, which may alter any of the images in the reproduction, or which may significantly change the usual method of filming, are checked below.

L'Institut a microfilmé le meilleur exemplaire qu'il lui a été possible de se procurer. Les détails de cet exemplaire qui sont peut-être uniques du point de vue bibliographique, qui peuvent modifier une image reproduite, ou qui peuvent exiger une modification dans la méthode normale de filmage sont indiqués ci-dessous.

- | | |
|--|--|
| <input type="checkbox"/> Coloured covers/
Couverture de couleur | <input type="checkbox"/> Coloured pages/
Pages de couleur |
| <input type="checkbox"/> Covers damaged/
Couverture endommagée | <input type="checkbox"/> Pages damaged/
Pages endommagées |
| <input type="checkbox"/> Covers restored and/or laminated/
Couverture restaurée et/ou pelliculée | <input type="checkbox"/> Pages restored and/or laminated/
Pages restaurées et/ou pelliculées |
| <input type="checkbox"/> Cover title missing/
Le titre de couverture manque | <input checked="" type="checkbox"/> Pages discoloured, stained or foxed/
Pages décolorées, tachetées ou piquées |
| <input type="checkbox"/> Coloured maps/
Cartes géographiques en couleur | <input type="checkbox"/> Pages detached/
Pages détachées |
| <input type="checkbox"/> Coloured ink (i.e. other than blue or black)/
Encre de couleur (i.e. autre que bleue ou noire) | <input checked="" type="checkbox"/> Showthrough/
Transparence |
| <input type="checkbox"/> Coloured plates and/or illustrations/
Planches et/ou illustrations en couleur | <input type="checkbox"/> Quality of print varies/
Qualité inégale de l'impression |
| <input checked="" type="checkbox"/> Bound with other material/
Relié avec d'autres documents | <input type="checkbox"/> Includes supplementary material/
Comprend du matériel supplémentaire |
| <input type="checkbox"/> Tight binding may cause shadows or distortion
along interior margin/
La reliure serrée peut causer de l'ombre ou de la
distorsion le long de la marge intérieure | <input type="checkbox"/> Only edition available/
Seule édition disponible |
| <input type="checkbox"/> Blank leaves added during restoration may
appear within the text. Whenever possible, these
have been omitted from filming/
Il se peut que certaines pages blanches ajoutées
lors d'une restauration apparaissent dans le texte,
mais, lorsque cela était possible, ces pages n'ont
pas été filmées. | <input type="checkbox"/> Pages wholly or partially obscured by errata
slips, tissues, etc., have been refilmed to
ensure the best possible image/
Les pages totalement ou partiellement
obscurcies par un feuillet d'errata, une pelure,
etc., ont été filmées à nouveau de façon à
obtenir la meilleure image possible. |
| <input type="checkbox"/> Additional comments:/
Commentaires supplémentaires: | |

This item is filmed at the reduction ratio checked below/
Ce document est filmé au taux de réduction indiqué ci-dessous.

10X	12X	14X	16X	18X	20X	22X	24X	26X	28X	30X	32X
				<input checked="" type="checkbox"/>							

The copy filmed here has been reproduced thanks to the generosity of:

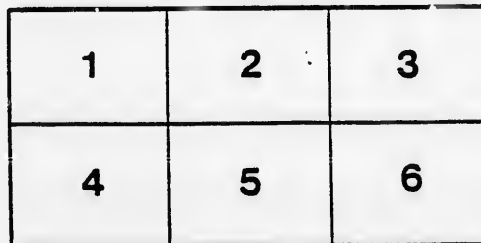
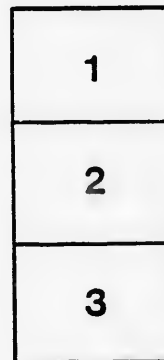
Archives of Ontario
Toronto

The images appearing here are the best quality possible considering the condition and legibility of the original copy and in keeping with the filming contract specifications.

Original copies in printed paper covers are filmed beginning with the front cover and ending on the last page with a printed or illustrated impression, or the back cover when appropriate. All other original copies are filmed beginning on the first page with a printed or illustrated impression, and ending on the last page with a printed or illustrated impression.

The last recorded frame on each microfiche shall contain the symbol \rightarrow (meaning "CONTINUED"), or the symbol ∇ (meaning "END"), whichever applies.

Maps, plates, charts, etc., may be filmed at different reduction ratios. Those too large to be entirely included in one exposure are filmed beginning in the upper left hand corner, left to right and top to bottom, as many frames as required. The following diagrams illustrate the method:



L'exemplaire filmé fut reproduit grâce à la générosité de:

Archives of Ontario
Toronto

Les images suivantes ont été reproduites avec le plus grand soin, compte tenu de la condition et de la netteté de l'exemplaire filmé, et en conformité avec les conditions du contrat de filmage.

Les exemplaires originaux dont la couverture en papier est imprimée sont filmés en commençant par le premier plat et en terminant soit par la dernière page qui comporte une empreinte d'impression ou d'illustration, soit par le second plat, selon le cas. Tous les autres exemplaires originaux sont filmés en commençant par la première page qui comporte une empreinte d'impression ou d'illustration et en terminant par la dernière page qui comporte une telle empreinte.

Un des symboles suivants apparaîtra sur la dernière image de chaque microfiche, selon le cas: le symbole \rightarrow signifie "A SUIVRE", le symbole ∇ signifie "FIN".

Les cartes, planches, tableaux, etc., peuvent être filmés à des taux de réduction différents. Lorsque le document est trop grand pour être reproduit en un seul cliché, il est filmé à partir de l'angle supérieur gauche, de gauche à droite, et de haut en bas, en prenant le nombre d'images nécessaire. Les diagrammes suivants illustrent la méthode.





AN OFFICE

—FOR—

LAYING CORNER STONE

—OF THE—

U. E. Loyalist

MEMORIAL CHURCH,

ADOLPHUSTOWN, JUNE 17TH, 1884.



NAPANEE, ONT.
TEMPLETON & BEEMAN, PRINTERS, "BEAVER" OFFICE.
1884.

An Office for Laying the Corner Stone.

At the hour appointed the service will commence in St. Paul's Church, by the Archdeacon saying,

In the name of the Father, and of the Son, and of the Holy Ghost. *Amen.*

Except the Lord build the house their labor is in vain that build it.

Answer.—Our help is in the name of the Lord, who hath made heaven and earth.

Archdeacon.—Both now and ever vouchsafe to hear us, O Lord.

Answer.—Graciously hear us, O Christ; graciously hear us, O Lord, Christ.

Archdeacon.—O Lord, let thy mercy be shewed upon us.

Answer.—As we do put our trust in Thee.

Archdeacon.—Let us pray.

Prevent us, O Lord, in all our doings with thy most gracious favor, and further us with thy continual help; that in all our works begun, continued, and ended in thee, we may glorify thy holy Name, and finally by thy mercy obtain everlasting life; through Jesus Christ our Lord. *Amen.*

Our Father, etc.

Here all standing up shall say,

The glorious majesty of the Lord our God be upon us, prosper thou the work of our hands upon us. O prosper thou our handiwork *Amen.*

A procession shall then be formed (juniores priores) and shall proceed to the new site, singing

HYMN 385, A. and M.

Onward, Christian soldiers,
Marching as to war,
With the Cross of Jesus
Going on before.
Christ the Royal Master
Leads against the foe,
Forward into battle,
See, His banners go.

Onward, Christian soldiers,
Marching as to war,
With the Cross of Jesus
Going on before.

At the sign of triumph
Satan's host doth flee;
On, then, Christian soldiers,
On to victory.

Hell's foundations quiver
At the shout of praise;
Brothers, lift your voices,
Loud your anthems raise.
Onward, &c.

Like a mighty army
Moves the Church of God;
Brothers, we are treading
Where the saints have trod;
We are not divided,
All one body we,
One in hope and doctrine.
One in charity.
Onward, &c.

Cro
F
But
C
Gat
O
We
A
U
then
A
A
A
A
precie
for th
of th
offer
pious
Jesus
T
Gover
for la
words
W
God, a
one h
vinec
Crow
T
Gl
Ar
An
Ar
be tau
and L

Crowns and thrones may perish,
Kingdoms rise and wane,
But the Church of Jesus
Constant will remain;
Gates of hell can never
'Gainst the Church prevail;
We have Christ's own promise,
And that cannot fail.
Onward, &c.

Onward, then, ye people,
Join our happy throng,
Blend with ours your voices
In triumphant song;
Glory, laud and honor,
Unto Christ our King,
This through countless ages
Men and Angels sing.
Onward, &c.

*Upon reaching the ground, and when all are in their places,
then shall be sung or said,*

PSALM C. Jubilate Deo.

1. O be joyful in the Lord, all ye lands; serve the Lord with gladness, and come before his presence with a song.
2. Be ye sure that the Lord he is God: it is he that hath made us, and not we ourselves; we are his people, and the sheep of his pasture.
3. O go your way into his gates with thanksgiving, and into his courts with praise; be thankful unto him, and speak good of his Name.
4. For the Lord is gracious, his mercy is everlasting: and his truth endureth from generation.
Glory be, &c.

Archdeacon.—The Lord be with you.

Answer.—And with thy spirit.

Archdeacon.—Let us pray.

Almighty and everlasting God, who didst lay in Zion a precious Corner-Stone, not made with hands, bless this stone, for the foundation of this house to be erected to the Glory of thy Holy Name, and grant that they who shall faithfully offer to Thee of their substance for the furtherance of this pious work, may be preserved in body and soul; through Jesus Christ Our Lord. *Amen.*

The Archdeacon now addressing His Honor the Lieut.-Governor, shall deliver into his hands the proper implements for laying the stone; which may be laid with these, or other words as His Honor shall please.

We lay this stone of foundation to the honor and glory of God, and in memory of the United Empire Loyalists, who one hundred years ago laid the corner stone of our Province in peace and righteousness and in loyalty to the British Crown and Empire.

Then shall all respond in a loud voice,

Glory be to the Father, etc., world without end. *Amen.*

Archdeacon.—God save the Queen.

Answer.—And evermore mightily defend her.

Archdeacon.—Here let true faith and sound doctrine ever be taught. Here let men learn to Fear God, Honor the King and Love the Brotherhood. Here let true praise and wor-

ship ascend to our most holy Saviour, Jesus Christ, who ever liveth and reigneth with the Father and the Holy Ghost; one God world without end.—*Amen.*

Let us pray.

O God, without whom nothing is strong, nothing is holy, sanctify and build up these walls to thy honor and glory. Let the light of thy holy presence ever shine upon them. And may thy holy Church, built upon the foundation of the Apostles and Prophets, Jesus Christ himself being the chief corner stone, fitly framed together, and compacted by that which every joint supplieth, grow unto an Holy Temple in the Lord.
Amen.

O, Almighty God, grant, we beseech thee, that as thy servants the Fathers of this Province, in whose memory as well as to Thy honor, this church is to be built, were content to suffer the loss of all things at the call of duty to their earthly, and to thee, their heavenly king, so we may evermore be ready patiently to suffer for righteousness sake, and steadfastly to obey thy commandments, through Jesus Christ our Lord. *Amen.*

O Lord, who wisely orderest all things, both in heaven and earth; to thy merciful protection we commend the workmen employed in this building. Let thy fatherly hand ever be over them; keep them from all evil, accident, hurt or hindrance, and from all unfaithful, profane or unholy words or deeds; that the work now begun, may by thy blessing on their labor, be brought to a happy end; through Jesus Christ our Lord.—*Amen.*

The churchwardens shall now receive the people's offerings for the Building Fund, to be laid on the stone, after which shall be sung,

HYMN 394, A. and M.

O Lord of host, Whose glory fills
The bounds of the eternal hills,
And yet vouchsafes in Christian lands,
To dwell in temples made with hands;
Grant that all we, who here to-day
Rejoicing this foundation lay,
May be in very deed Thine own,
Built on the Precious Corner-Stone.
Endue the creatures of Thy grace,
That shall adorn Thy dwelling-place;
The beauty of the oak and pine,
The gold and silver make them Thine.

To Thee they all belong; to Thee
The treasures of the earth and sea;
And when we bring them to Thy Throne,
We but present Thee with Thine own.
The heads that guide endue with skill,
The hands that work preserve from ill,
That we, who these foundations lay,
May raise the topstone in its day.
Both now and ever, Lord, protect
The temple of Thine own elect;
Be Thou in them, and they in Thee,
O ever-blessed TRINITY! Amen.

Benediction.

Addresses from the platform.

Band—"God Save the Queen."

