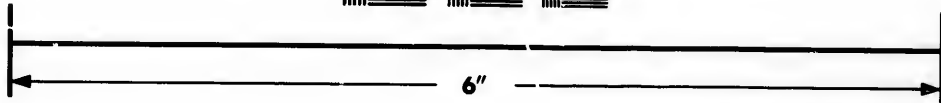
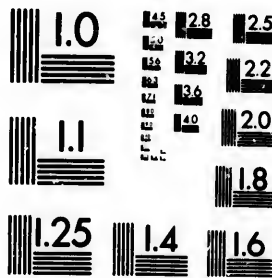


**IMAGE EVALUATION
TEST TARGET (MT-3)**



**Photographic
Sciences
Corporation**

23 WEST MAIN STREET
WEBSTER, N.Y. 14580
(716) 872-4503

E 28
E 32
E 36
E 40
E 44
E 48

**CIHM/ICMH
Microfiche
Series.**

**CIHM/ICMH
Collection de
microfiches.**



Canadian Institute for Historical Microreproductions / Institut canadien de microreproductions historiques

01

© 1982

Technical and Bibliographic Notes/Notes techniques et bibliographiques

The Institute has attempted to obtain the best original copy available for filming. Features of this copy which may be bibliographically unique, which may alter any of the images in the reproduction, or which may significantly change the usual method of filming, are checked below.

L'Institut a microfilmé le meilleur exemplaire qu'il lui a été possible de se procurer. Les détails de cet exemplaire qui sont peut-être uniques du point de vue bibliographique, qui peuvent modifier une image reproduite, ou qui peuvent exiger une modification dans la méthode normale de filmage sont indiqués ci-dessous.

- Coloured covers/
Couverture de couleur
- Covers damaged/
Couverture endommagée
- Covers restored and/or laminated/
Couverture restaurée et/ou pelliculée
- Cover title missing/
Le titre de couverture manque
- Coloured maps/
Cartes géographiques en couleur
- Coloured ink (i.e. other than blue or black)/
Encre de couleur (i.e. autre que bleue ou noire)
- Coloured plates and/or illustrations/
Planches et/ou illustrations en couleur
- Bound with other material/
Relié avec d'autres documents
- Tight binding may cause shadows or distortion
along interior margin/
La reliure serrée peut causer de l'ombre ou de la
distortion le long de la marge intérieure
- Blank leaves added during restoration may
appear within the text. Whenever possible, these
have been omitted from filming/
Il se peut que certaines pages blanches ajoutées
lors d'une restauration apparaissent dans le texte,
mais, lorsque cela était possible, ces pages n'ont
pas été filmées.
- Additional comments:/
Commentaires supplémentaires:

- Coloured pages/
Pages de couleur
- Pages damaged/
Pages endommagées
- Pages restored and/or laminated/
Pages restaurées et/ou pelliculées
- Pages discoloured, stained or foxed/
Pages décolorées, tachetées ou piquées
- Pages detached/
Pages détachées
- Showthrough/
Transparence
- Quality of print varies/
Qualité inégale de l'impression
- Includes supplementary material/
Comprend du matériel supplémentaire
- Only edition available/
Seule édition disponible
- Pages wholly or partially obscured by errata
slips, tissues, etc., have been refilmed to
ensure the best possible image/
Les pages totalement ou partiellement
obscurcies par un feuillet d'errata, une pelure,
etc., ont été filmées à nouveau de façon à
obtenir la meilleure image possible.

This item is filmed at the reduction ratio checked below/
Ce document est filmé au taux de réduction indiqué ci-dessous.

10X	12X	14X	16X	18X	20X	22X	24X	26X	28X	30X	32X
					✓						

The copy filmed here has been reproduced thanks to the generosity of:

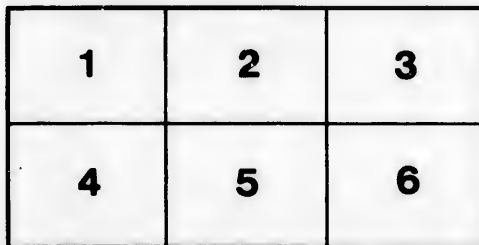
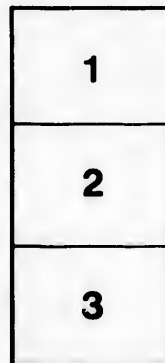
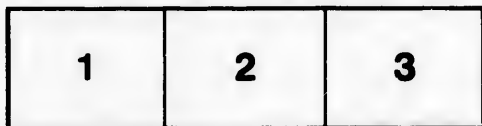
Library,
Geological Survey of Canada

The images appearing here are the best quality possible considering the condition and legibility of the original copy and in keeping with the filming contract specifications.

Original copies in printed paper covers are filmed beginning with the front cover and ending on the last page with a printed or illustrated impression, or the back cover when appropriate. All other original copies are filmed beginning on the first page with a printed or illustrated impression, and ending on the last page with a printed or illustrated impression.

The last recorded frame on each microfiche shall contain the symbol \rightarrow (meaning "CONTINUED"), or the symbol ∇ (meaning "END"), whichever applies.

Maps, plates, charts, etc., may be filmed at different reduction ratios. Those too large to be entirely included in one exposure are filmed beginning in the upper left hand corner, left to right and top to bottom, as many frames as required. The following diagrams illustrate the method:



L'exemplaire filmé fut reproduit grâce à la générosité de:

Bibliothèque,
Commission Géologique du Canada

Les images suivantes ont été reproduites avec le plus grand soin, compte tenu de la condition et de la netteté de l'exemplaire filmé, et en conformité avec les conditions du contrat de filmage.

Les exemplaires originaux dont la couverture en papier est imprimée sont filmés en commençant par le premier plat et en terminant soit par la dernière page qui comporte une empreinte d'impression ou d'illustration, soit par le second plat, selon le cas. Tous les autres exemplaires originaux sont filmés en commençant par la première page qui comporte une empreinte d'impression ou d'illustration et en terminant par la dernière page qui comporte une telle empreinte.

Un des symboles suivants apparaîtra sur la dernière image de chaque microfiche, selon le cas: le symbole \rightarrow signifie "A SUIVRE", le symbole ∇ signifie "FIN".

Les cartes, planches, tableaux, etc., peuvent être filmés à des taux de réduction différents. Lorsque le document est trop grand pour être reproduit en un seul cliché, il est filmé à partir de l'angle supérieur gauche, de gauche à droite, et de haut en bas, en prenant le nombre d'images nécessaire. Les diagrammes suivants illustrent la méthode.

ails
du
odifier
une
mage

rrata
o

elure,
à

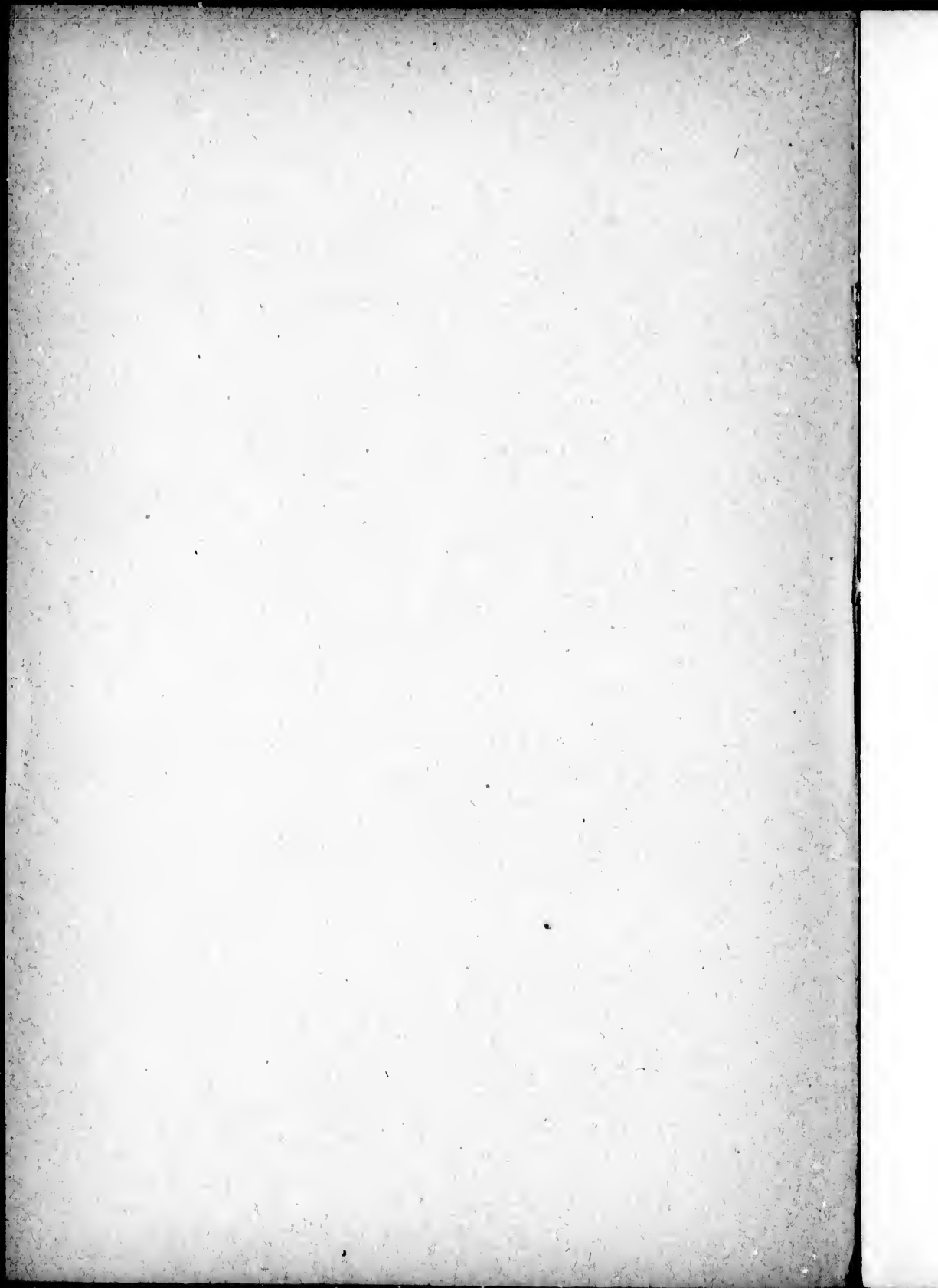
**Contributions from the Herbarium of the
Geological Survey of Canada.**

(By Permission of the Director.)

By **JAMES M. MACOUN,**
Curator of the Herbarium.

X.

Reprinted from the Canadian Record of Science, January, 1897.



"Reprinted from the *Canadian Record of Science*, January, 1897."

CONTRIBUTIONS TO CANADIAN BOTANY.

By JAMES M. MACOUN.

X.

RANUNCULUS LAPPONICUS, L.

Shore of Seal Lake, Northern Labrador, 1896. (*A. P. Low.*) Not before recorded east of Lake Nepigon, Ont.

ANEMONE RICHARDSONI, Hook.

Along the Ungava River, Labrador. (*A. P. Low.*) Not before recorded from Labrador.

BERBERIS NERVOSA, Pursh.

Pend d'Oreille River, about 20 miles east of the Columbia River, B.C., 1896. (*Jus. McCoy.*) Eastern limit.¹

NELEMBIUM LUTEUM, Willd.; Macoun, *Cat. Can. Plants*,
Vol. I, pp. 31 and 484.

In abundance in Lake Erie at Port Rowan, Ont.
(*John Macoun, W. Scott, J. M. Dickson.*)

The geographical limits given in these papers refer to Canada only.

NASTURTIUM ARMORACIA, Fries.

Old fields at Prince Albert, Saskatchewan. (*John Macoun.*) Not before recorded west of Ontario.

CARDAMINE DIGITATA, Rich. in Frank. I. Journ., ed. 2
app. p. 26.

Near the mouth of the Mackenzie River, 1893. (*Rev. J. D. Stringer.*) Not rare between Lake Athabasca and Chesterfield Inlet. 1893. (*J. W. Tyrrell.*) Referred to *C. pratensis* by later American botanists. Easily separated from that species by its creeping, stoloniferous underground-stem, thinner, generally digitate leaves and smaller flowers. Not collected in America since first found by Richardson, but recorded from St. Lawrence Bay, Behring's Straits, by Chamisso and Eschscholtz. Fruiting specimens have never been collected.

LOBULARIA MARITIMA, Desv.

Alyssum maritimum, Lam.

Near the outer wharf, Victoria, Vancouver Island. (*John Macoun.*) Probably established in other parts of Canada, but not before recorded.

ALYSSUM INCANUM, DC.

Cultivated fields, Wallbridge, Hastings Co., Ont. (*A. Y. Massey.*) Not before recorded in Canada.

THELOPODIUM (?) SALSUGINEUM, Robinson, Syn. Fl. N.
Amer., p. 175.

Sisymbrium salsuginum, Pall.: Macoun, Cat. Can. Plants, Vol. I., p. 47.

By a saline lake, Park-beg, west of Moose Jay, Assiniboia, June 23rd, 1896. (*John Macoun.* Herb. No.

14, 292).¹ This interesting little Crucifer has been rarely collected, and there is still some uncertainty as to its true place among the Cruciferae. It has already been referred to several genera, and Dr. Robinson has only doubtfully named it *Thelopodium*. He says: "The problematic *S. subsugiucum*, Pall. with glabrous entire cordate-clasping leaves, purplish flowers and undivided stigma, may well be referred to *Thelopodium*, from which it appears to be distinguished only by its small size and slender habit." (Syn. Flora, p. 137). Its range in America, according to Dr. Robinson, is "Rocky Mountains from Colorado at South Park, *Porter*, to British America and shores of the Arctic Sea, *Richardson*, according to Hooker, l.c.," but it has never been found in our Rocky Mountains so far as we know.

CAPSELLA ELLIPTICA, C. A. Meyer.

C. dirivata, Walp.: Macoun, Cat. Can. Plants, Vol. I., p. 56; Can. Rec. Science, Nov., 1894, p. 147.

Damp places near a saline lake, Park-beg, Assa., 1896. (*John Macoun*. Herb. No. 12,390.) Not before recorded between Labrador and British Columbia.

VIOLA ROTUNDIFOLIA, Mx.

Moose Creek, Can. Atlantic Ry.: Jordan, Welland Co., Ont. (*John Macoun*.) Niagara Falls, Ont. (*R. Cameron*.) 20-mile Creek, west of St. Catharines, Ont. (*J. Dearness*.) Not before recorded from Ontario.

ARENARIA MACROPHYLLA, Hook.

Dr. Robinson in Proc. Amer. Acad. of Arts and Sciences, Vol. XXIX., p. 290, gives as the range of this species "eastward to Isle St. Ignace, Lake Superior."

¹ Whenever herbarium numbers are given, they are the numbers under which specimens have been distributed from the herbarium of the Geological Survey of Canada.

Specimens collected in 1894 by Mr. A. P. Low at Lake Michikamow, Labrador, and in 1896 along the Koaksoak River, Northern Labrador, have been doubtfully referred here.

SAGINA NIVALIS, Lightf.

Along the Ungava River, Northern Labrador, 1896.
(A. P. Low.) New to Canada.

HYPERICUM PROLIFICUM, L.

Sandy plains, along fence rows and in woods Caradoc township south of Strathroy, Ont., Aug., 1888. (J. Dearness.) New to Canada.

HYPERICUM NUDICAULE, Walt.

H. Sarothru, Mx. : Macoun, Cat. Can. Plants, Vol. I., p. 85.

Sandy fields south of Sandwich, Ont., 1892. (John Macoun.) Only authentic Canadian record.

GERANIUM BICKNELLII, N. L. Britton, Bull. Torr. Bot. Club, Vol. 24, p. 92.

"Similar to *G. Carolinianum*, but taller, the stems usually more slender, loosely pubescent. Leaves slender-petioled, somewhat angulate in outline, the segments oblong or linear-oblong, mostly narrower; peduncles slender, two-flowered, the inflorescence loose; sepals lanceolate, awn-pointed; ovary lobes pubescent; persistent filaments longer than the carpels; beak about 1' line long, long-pointed, its tip 2"-3" long; seeds reticulated."

"Nova Scotia (?) Maine to Western Ontario and Southern New York."

In the February number of the Bulletin of the Torrey Botanical Club, Dr. Britton describes *G. Bicknellii* as one of "two undescribed eastern species." Our herbarium sheets of *G. Carolinianum* have long been separated

into two forms, both of general distribution from Ontario westward. Our herbarium specimens of *G. Bicknellii* give this plant a much wider range than is indicated by Dr. Britton. They are from Bedford, N.S.; Nepigon, Lake Superior; Killarney, Man.; Prince Albert, Saskatchewan; Banff, Rocky Mountains; Ainsworth, Kootanie Lake, B.C.; Spence's Bridge, B.C. (*John Macoun.*) Ottawa, Ont.; Observation Point, Lake Winnipeg. (*J. M. Macoun.*) North Shore of Lake Athabasca. (*J. W. Tyrell.*) Arctic North America. (*Dr. Richardson.*) All the specimens from the above localities are separable at a glance from true *G. Carolinianum* by the much longer and very slender tip of the beak.

The specimens from Kootanie Lake were found growing with *G. Carolinianum* and were named var. *longipes*, Wat., a variety that must approach very closely *G. Bicknellii*.

GERANIUM CAROLINIANUM, L.

Not represented in the herbarium of the Geological Survey from eastern provinces. Belleville, Ont.; Cypress Hills, Assa.; Sproat, Columbia River, B.C.; Ainsworth, Kootanie Lake, B.C.; Mt. Finlayson, Victoria Arm, and Comox, Vancouver Island. (*John Macoun.*) Walpole Island, Lambton Co., Ont. (*C. K. Dodge.*)

We have no intermediate forms between *G. Bicknellii* and *G. Carolinianum*.

LUPINUS LITTORALIS, Dougl.

Sandy soil at Point Holmes near Comox, Vancouver Island, 1893. (*John Macoun.*) New to Canada.

AMORPHA FRUTICOSA, L.; Macoun, Cat. Can. Plants, Vol. I, p. 109.

In thickets by the Red River at Morris, Man., and at

River Park, Winnipeg, Man., 1896. (*John Macoun*.
Herb. No. 12511.) Not reported since found by Douglas

DESMODIUM CANADENSE, DC.

In thickets at Morden, Man., 1896. (*John Macoun*.
Herb. No. 12525.) Western limit.

DESMODIUM ILLINOENSE, Gray.

Komoka, Ont., 1888. (*J. Dewar*.) New to Canada.

LATHYRUS LITTORALIS, Endl.

Ahousset, west coast of Vancouver Island. (*J. R.*
Anderson.) New to Canada.

VICIA HIRSUTA, Koch.

In cultivated fields, Olds, Alberta. (*T. N. Willing*.)
Not before recorded from prairie region.

AMPHICARPEA MONOCA, Ell.

In thickets near the Assiniboine River at Brandon,
Man.; thickets by the Red River, Winnipeg, Man., 1896.
(*John Macoun*.) Not before recorded west of Lake
Superior.

SAXIFRAGA REFLEXA, Hook.

Near the mouth of the Mackenzie River, 1893. (*Rev.*
J. D. Stringer.) The reflexed calyx-segments, the two
orange spots on the petals and the petaloid filaments are
conspicuous characters of the fine specimens collected by
Mr. Stringer. Herb. No. 14300.

PARNASSIA CAROLINIANA, Mx.

Boggy places near Stony Mountain, Man., 1896. (*John*
Macoun. Herb. No. 12660.) Western limit in Canada.

DROSERA INTERMEDIA, Hayne, var. AMERICANA, DC.

In a muskeg north of Prince Albert, Saskatchewan, 1896. (*John Macoun*. Herb. No. 12669.) Western and northern limit.

DROSERA LINEARIS, Goldie.

In a muskeg north of Prince Albert, Saskatchewan, 1896. (*John Macoun*. Herb. No. 12668.) Not before recorded between Manitoba and Rocky Mountains.

LUDWIGIA POLYCARPA, Short & Peter.

First recorded from Canada in Part I. of these papers. Since collected by Mr. J. Dearness near Comber, Ont., and by Mr. C. K. Dodge near Sarnia, Ont.

LONICERA GLAUDESCENS, Rydberg, Bull. Torr. Bot. Club, Vol. XXIV., p. 90.

L. Sullicantii, Macoun, Cat. Can. Plants, Vol. I., pp. 197, 539.

L. glauca, Macoun, Cat. Can. Plants, Vol. I., p. 197, in part, and Vol. I., p. 539.

L. hirsuta glaucescens, Rydberg, Contr. U. S. Nat. Herb. III., 503.

From North-Western Ontario to the Rocky Mountains. Our herbarium specimens are from Manitoba House, Lake Manitoba; Fort Ellice, Assiniboine River, Man.; West Selkirk, Man. Herb. No. 12805; Rat River, Otterburne, Man.; Brandon, Man. Herb. No. 12804; Moose Jaw, Assa. Herb. No. 12803; Prince Albert, Saskatchewan, Herb. No. 12806; Banff and Kamamaskis, Rocky Mountains; Waterton Lake, South Kootanie Pass, Rocky Mountains. Herb. No. 10802. (*John Macoun*.) Doghead, Lake Winnipeg. (*J. M. Macoun*.) Indian Head, Assa. (*W. Spreadborough*.) Milk River Ridge, Alta. (*Dr. G. M. Dawson*.) Red Deer River, Alta. (*H. H. Gaetz*.) Fort

Smith, Great Slave River. (*Miss E. Taylor.*) Additional Canadian localities given by Mr. Rydberg are River That Turns, Assa. (*John Macoun.*) Ontario (*Dr. and Mrs. Britton and Miss Timmerman; T. J. W. Burgess.*) Saskatchewan. (*E. Bourgeau.*)

LIATRIS SCARIOSA, Willd.

Since the publication of No. 9 of these papers, Dr. T. J. W. Burgess has written me that he collected this species at Leamington, Ont., in 1886, and Mr. J. Dearness reports it from Port Frank and Point Edward, Ont.

LIATRIS SPICATA, Willd.

Leamington, Ont. (*Dr. T. J. W. Burgess.*) The only other Canadian locality known to us is the vicinity of Sarnia, Ont., where this species is common.

RUDBECKIA COLUMNARIS, Pursh, var. PULCHERRIMA, Torr. & Gray; Macoun, Cat. Can. Plants, Vol. I, p. 243.

Near the Government Experimental Farm, Brandon, Man., 1896. (*John Macoun.* Herb. No. 12243.) The dark brown-purple rays of this beautiful plant separate it from *R. columnaris*.

BERIA MARITIMA, Gray.

On Bird Island, Barclay Sound, west coast of Vancouver Island. (*Chas. F. Newcombe.*) New to Canada. Only other known place of occurrence, Farallones Islands, off San Francisco.

ANTHEMIS ARVENSIS, L.

On ballast at Nanaimo, Vancouver Island, 1887. (*John Macoun.*) Common around Victoria, Vancouver Island. (*J. R. Anderson.*) Not before recorded west of the Maritime Provinces.

CHRYSANTHEMUM ARCTICUM, L.

Shore of Larcomb Island, Observatory Inlet, B.C. (*J. McEroy.*) Southern limit on Pacific Coast.

CHRYSANTHEMUM PARTHENIUM, Pers.

On ballast heaps, Nanaimo, Vancouver Island, 1893. (*John Macoun.*) Not before recorded west of Ontario.

ARTEMISIA GLAUCA, Pall. : *Macoun, Cat. Can. Plants, Vol. I., p. 255, and Vol. II., p. 335.*

Common in Manitoba from Brandon southward. (*John Macoun. Herb. Nos. 12257 and 12426.*)

ARTEMISIA NORVEGICA, Fries, var. PACIFICA, Gray.

Mount O.K., near Alaskan boundary, B.C. (*H. W. E. Canoran.*) Yukon River. (*W. Ogilvie.*)

ARTEMISIA VULGARIS, L.

Along the C. P. Ry. at Brandon, Man. : waste places, Sicamous, B.C. ; ballast heaps, Nanaimo, Vancouver Island. (*John Macoun.*) Not recorded west of Ontario.

ARTEMISIA VULGARIS, L. var. CALIFORNICA, Bess.

Specimens collected by Mr. Jas. Fletcher near Victoria, Vancouver Island, in 1883, were doubtfully referred here by Prof. Macoun. (*Cat. Can. Plants, Vol. I., p. 258.*) It has since been collected at Burrard Inlet, B.C., and at Sooke, Saanich Arm, and Qualicum, Vancouver Island, by Prof. Macoun.

PETASITES PALMATA, Gray.

Revelstoke, Columbia River, B.C. ; Port Moody, B.C. ; Comox, Sooke and Victoria, Vancouver Island. (*John Macoun.*) Nanaimo River Vancouver Island. (*J. R. Anderson.*) Not before recorded west of the Selkirk Mountains.

CNICUS ALTISSIMUS, Willd., var. DISCOLOR, Gray.

In thickets, River Park, Winnipeg, Man. (*John Macoun*. Herb. No. 12292.) Not before recorded west of Sarnia, Ont.

CNICUS EDULIS, Gray.

Thickets, Sicamous, Shuswap Lake, B.C., and Ainsworth, Kootanie Lake, B.C. (*John Macoun*.) Not before recorded from interior of British Columbia.

ONOPORDON ACANTHIUM, L.

Waste grounds, Nanaimo, Vancouver Island, 1887. (*John Macoun*.) Not before recorded west of Ontario.

CENTAUREA CYANUS, L.

Waste places, Kootanie Lake, B.C. (*Dr. G. M. Dawson*.) Goldstream, Vancouver Island. (*John Macoun*.) Not before recorded west of Ontario.

CALENDULA ARVENSIS, L.

On ballast, St. John, N.B. (*G. U. Hay*.) New to Canada.

ECHINOPS GLOBIFER, Janka.

Escaped from cultivation and well established at Beeton, Ont. (*J. M. Dickson*.)

LAMPSANA COMMUNIS, L.

North Saanich, Vancouver Island. (*J. R. Anderson*.) Roadsides, Comox and Victoria, Vancouver Island. (*John Macoun*.) Not before recorded from Vancouver Island.

CREPIS OCCIDENTALIS, Nutt. var. GLANDULOSA, Torr.;
Macoun, Cat. Can. Plants, Vol. I, p. 556.

Prairies, Farewell Creek, Cypress Hills, Assa. (*John Macoun*. Herb. No. 11709.) Eastern limit.

HIERACIUM GRACILE, Hook.

Mount Mark, Vancouver Island. Alt. 3,000 ft. (*John Macoun*.) Not before recorded from Vancouver Island. New stations for this species from interior of British Columbia are Queest Creek, Shuswap Lake, alt. 5,000 ft.; mountains north of Griffin Lake, alt. 6,000 ft.; Toad Mountain, Kootanie Lake, alt. 6,000 ft. (*J. M. Macoun*.)

HIERACIUM AURANTIACUM, L.; Macoun, Cat. Can. Plants, Vol. I., p. 557, and Vol. II., p. 336.

Since first collected at London by Mr. Dearness and near Lake Magog, Que., by Mr. Giroux in 1889, this plant has become a troublesome weed in parts of Quebec and Ontario. Our herbarium specimens are from Lake Memphremagog, Que. (*Dr. Ells*.) Mer Bleue, near Ottawa, Ont. (*Dr. Jas. Fletcher*.) Port Colborne, Ont. (*John Macoun*.)

LACTUCA CANADENSIS, L.

Damp thickets, Sicamous, and Revelstoke, B.C. (*John Macoun*.) Not before recorded from west of prairie region. Prof. Macoun (Cat. Can. Plants, Vol. I., p. 280) says that this species is quite common in thickets in the western prairie region, but our only herbarium specimens from the prairie were collected at Morden, Man., by Prof. Macoun in 1896. *L. leucophæa*, Gray, is common throughout the prairie region.

LACTUCA HIRSUTA, Muhl.

Alluvial soil near the Pembina River, three miles north of Killarney, Man., 1896. (*John Macoun*. Herb. No. 12346.) Not before recorded west of Ontario. Sandy woods near Ottawa and thickets west of Leamington (*John Macoun*) are new stations for Ontario.

LACTUCA LEUCOPHÆA, Gray; Macoun, Cat. Can. Plants,
Vol. I, pp. 281, 559.

Additional western stations for this species are
Sicamous, B.C.; Revelstoke, B.C.; Stanley Park, Van-
couver, B.C., and Qualicum, Vancouver Island. (*John
Macoun.*)

PRENANTHES ALATA, Gray; Macoun, Cat. Can. Plants,
Vol. I, p. 283.

Shake River, Burrough Bay, Lat. 56° near Alaskan
boundary. (*H. W. E. Canavan.*) Alberni Canal and
Barclay Sound, Vancouver Island. (*John Macoun.*)
Not rare on the west coast of Vancouver Island, collected
at Fair Creek and Port San Juan. (*J. R. Anderson.*)

PRENANTHES RACEMOSA, Michx var. PINNATIFIDA, Gray.

Near Windsor, Ont. (*Wm. Scott.*) Walpole Island,
Lambton Co., Ont. (*C. K. Dodge.*) New to Canada.

SONCHUS ARVENSIS, L.

In the C. P. Ry. station yard at Brandon, Man.
(*John Macoun.*) Not before recorded west of Ontario.

TRAGOPOGON PORRIFOLIUS, L.

Waste places, Spence's Bridge, B.C. (*John Macoun.*)
Not before recorded between Ontario and Vancouver
Island.

LOBELIA DORTMANNA, L.

Shawnigan Lake, Vancouver Island. (*John Macoun.*)
Not before recorded from any part of British Columbia.

VACCINIUM CANADENSE, Kalm.; Macoun, Cat. Can. Plants,
Vol. I, pp. 290 and 560.

Revelstoke, B.C., and Craigellachie, B.C. (*John
Macoun.*) Western limit.

VACCINIUM OVALIFOLIUM, Smith.

Revelstoke, B.C.; Ainsworth, Kootanie Lake, B.C.; Sicamous, B.C.; Comox and Mount Mark, Vancouver Island. (*John Macoun.*) Head of Bennett Lake, Lat. 61°, north of B.C. (*Dr. G. M. Dawson.*) Quesnel Lake, B.C. (*A. Bowman.*) Mount Chean, B.C. (*J. R. Anderson.*) Not before recorded in Canada west of the Selkirk Mountains, but evidently common throughout British Columbia.

ARCTOSTAPHYLOS ALPINA, Spreng.; Macoun, Cat. Can. Plants, Vol. I., p. 294.

Cross Portage, Sepawisk Lake, Nelson River, Kewatin, 1896. (*Jos. Tyrrell.*) Southern limit in Central Canada.

CHIOGENES HISPIDULA, T. & G.

Mossy woods, Sicamous, B.C. (*John Macoun.*) Western limit in Canada.

GAULTHERIA OVATIFOLIA, Gray.

In woods at Revelstoke, Columbia River, B.C. (*John Macoun.*) Eastern limit in Canada.

GAULTHERIA MYRSINITES, Hook.

Alpine summits, Ainsworth, Kootanie Lake, B.C., and north of Griffin Lake, B.C. (*John Macoun.*) Western limit in Canada.

LEDUM GLANDULOSUM, Nutt.; Macoun, Cat. Can. Plants, Vol. I., p. 562 and Vol. II., p. 339.

Additional stations for this species are Mount Aylmer, Devil's Lake, Rocky Mountains, alt. 6,000 ft., 1891. (*John Macoun.*) Mountains west of Okanagan Lake, B.C. (*Jas. McEvoy.*) Mr. McEvoy reports this to be common at between 5,000 and 6,000 ft. altitude on most of the

mountains between Nicola River and Lake Okanagan, B.C. In the Rocky Mountains it seems confined to the vicinity of the Bow River.

RHODODENDRON ALBIFLORUM, Hook.

Additional stations for this species are Queest Creek, Shuswap Lake, B.C., alt. 5,000 ft.; mountains north of Griffin Lake, B.C., alt. 5,000 ft.; mountain woods, Ainsworth, Kootanie Lake, B.C. (*Jas. M. Macoun.*) Mountains south of Tulameen River, B.C., alt. 5,000 ft. (*Dr. G. M. Dawson.*) Alpine woods, Mount Arrowsmith, Vancouver Island. (*John Macoun.*) Not before recorded from Vancouver Island.

MONOTROPA UNIFLORA, L.: Macoun, Cat. Can. Plants, Vol. I, p. 307.

Not recorded by Prof. Macoun west of Lake of the Woods. Norway House, Lake Winnipeg. (*Dr. Richardson.*) Great Slave River. (*Miss E. Taylor.*) Sicamouc, B.C.; between Qualicum and Alberni, Vancouver Island. (*John Macoun.*)

PTEROSPORA ANDROMEDA, Nutt.; Macoun, Cat. Can. Plants, Vol. I, p. 307.

Not recorded by Prof. Macoun, east of Quebec or west of the Saskatchewan. Pine woods, Prospect Creek, Prince Edward Island; Nanaimo, Vancouver Island. (*John Macoun.*) Mountains west of Lake Okanagan, B.C. (*Jas. McEroy.*)

TRIENTALIS AMERICANA, Pursh.

In thickets north of Prince Albert, Sask. (*John Macoun.*) Black River, east of Lake Athabasca. (*J. W. Tyrrell.*) Northern and western limits in Canada.

DOUGLASIA ARCTICA, Hook.

A few specimens of this beautiful little plant were collected along the coast between the mouth of the Maekenzie River and Herschel Island by Rev. J. D. Stringer, May 25th, 1893. It has not been found since collected by Dr. Richardson to the east of the Maekenzie River. Herb. No. 14298.

ANAGALLIS ARVENSIS, L.

In waste places and on ballast heaps, Nanaimo, Vancouver Island. (*John Macoun.*) Not before recorded west of Ontario.

FRAXINUS VIRIDIS, Michx.

South of Moose Jaw, Assa., 1896, and Old Wives Lakes, Assa., 1895. (*John Macoun.*) Western limit in Canada.

VINCETOXICUM NIGRUM, Mœnch.

In cultivated grounds, Victoria, Vancouver Island, 1888. Adventitious. (*Dr. Jas. Fletcher.*) Only Canadian record.

GENTIANA ANDREWSII, Griseb.

Rich moist ground, Selkirk, Man. (*Jas. M. Macoun.*) Griswold, Man. (*Rev. W. A. Burman.*) Western limit in Canada.

PHILOX HOOKERI, Dougl.

Gilia pungens, var. *Hookeri*, Gray, Syn. Fl., p. 141.

Kettle River, east of Okanagan Lake, B.C. (*J. R. Anderson.*) New to Canada. First found by Douglas on Okanagan River a little south of the international boundary.

COLLOMIA GRANDIFLORA, Dougl.

Dry, rocky banks, Botanie Creek, near Lytton, B.C. (*Jas. McEvoy.*) Eastern limit in Canada.

GILIA LINIFLORA, Benth. var. PHARMACEOIDES, Gr.

Depressions on the prairie, Police Point, Medicine Hat, Assa., and near Cypress Lake, Assa. Herb. No. 5546. (*John Macoun.*) Not before recorded east of British Columbia.

PHACELIA TANACETIFOLIA, Benth.

A weed on the Experimental Farm, Brandon, Man., 1896. (*John Macoun.*) New to Canada.

CYNOGLOSSUM OFFICINALE, L.

Along an old road near the railway bridge, Brandon, Man., 1896. (*John Macoun.*) Not before recorded west of Ontario.

PHYSALIS PHILADELPHICA, Lam.

In a ravine, S.W. of Komoka, Ont. (*J. Dearness.*) New to Canada.

PHYSALIS VIRGINIANA, Mill. var. AMBIGUA, Gray ; Macoun, Cat. Can. Plants, Vol. I, p. 350.

Sandy hillside, shore of Lake Huron, Sept., 1891. (*J. Dearness.*) Not before recorded from Ontario, though some of the references under *P. Virginiana*, Macoun, Cat. Can. Plants, Vol. I. p. 350, are probably this variety.

GRATIOLA VIRGINIANA, L. ; Macoun, Cat. Can. Plants, p. 359.

Comox, Vancouver Island, 1893. (*John Macoun.* Herb. No. 706.) Distributed as *G. cbracteata*. Credited by Gray to British Columbia, but not before found by Canadian collectors.

MARTYNIA PROBOSCIDEA, Glox.

Niagara Falls, Ont., 1892. (*R. Cameron.*) Hamilton, Ont. (*J. M. Dickson.*) Not known to occur elsewhere in Canada.

PHRYMA LEPTOSTACHYA, L.

Damp thickets by a brook at Morden, Man. (*John Macoun*: Herb. No. 12431.) Not recorded west of Ontario.

TEUCRIUM CANADENSE, L.: *Macoun*, Cat. Can. Plants, Vol. I, p. 380 in part, and Vol. II, p. 349.

Apparently much rarer than *T. occidentale* even in Ontario. Our herbarium specimens are from Pt. Pelee, Essex Co., Ont. (*Dr. Burgess*.) Brampton, Ont. (*Jas. White*.) In thickets by the Assiniboine River at Brandon, Man. (*John Macoun*. Herb. No. 12416.) Not before recorded west of Ontario.

TEUCRIUM OCCIDENTALE, Gray; *Macoun*, Cat. Can. Plants, Vol. I, p. 574 and Vol. II, p. 349.

Our herbarium specimens are from Ottawa, Ont.; Belleville, Ont.; Bird's Hill, near Winnipeg, Man. Herb. No. 12288; Cypress Lake, Cypress Hills, Assa. Herb. No. 12890; Kamloops, B.C. (*John Macoun*.) London, Ont. (*Dr. Burgess*.) Burlington Beach, Hamilton, Ont. (*J. M. Dickson*.) Not before recorded from the prairie region.

ABRONIA MICRANTHA, Choiss.

Abundant in dry sand at the crossing of Many Berries Creek, north of Milk River, Assa., July 9th, 1895. (*John Macoun*. Herb. No. 12902.) New to Canada.

ANYCHIA DICHOTOMA, Mx.; *Macoun*, Cat. Can. Plants, Vol. I, p. 396.

Near Leamington, Ont., 1890. (*J. Dearness*.) Sandy fields near Leamington, Ont., 1892. (*John Macoun*.) Only once before collected in Canada.

AXYRIS AMARANTOIDES, L.; Macoun, Cat. Can. Plants, Vol. II, p. 352.

First collected in 1886, in Manitoba, by Dr. Fletcher, now common along the line of the Can. Pac. Ry. west to Medicine Hat, Assa., and in cultivated fields and waste places throughout Manitoba. Our herbarium specimens are from Winnipeg and Brandon, Man.; Indian Head, Moose Jaw and Medicine Hat, Assa.

ERIGONUM UMBELLATUM, Torr.; Macoun, Cat. Can. Plants, Vol. I., p. 406.

Additional stations for this species are Milk River Ridge, Alta.; Vermillion Mountain near Banff, Rocky Mountains; Lake Louise, Rocky Mountains; Sproat, Columbia River, B.C. (*John Macoun.*) Big Horn Mountains, west of Lake Okanagan, B.C. (*Jas. McEvoy.*) Not before recorded east of Rocky Mountains.

ERIGONUM HERACLOIDES, Michx.

Deer Park, Lower Arrow Lake, B.C. (*John Macoun.*) Eastern limit in Canada.

ERIGONUM OVALIFOLIUM, Nutt.; Macoun, Cat. Can. Plants, Vol. I., p. 407.

Big Horn Mountains, west of Okanagan Lake, B.C. (*Jas. McEvoy.*) Along Waterton Lake and on Sheep Mountain, South Kootanie Pass, Rocky Mountains. —(*John Macoun.* Herb. No. 12948.)

ERIGONUM MULTICEPS, Nees; Macoun, Cat. Can. Plants, Vol. I., p. 407.

Wood Mountain, Assa. Herb. No. 12949; dry rocks along Waterton Lake, South Kootanie Pass, Rocky Mountains, 1895. (*John Macoun.*) Eastern limit in Canada.

ERIGONUM NIVEUM, Dougl.

Dry ground, Lake Okanagan, B.C., Sept. 15th, 1890.
(*Dr. G. M. Dawson.*) New to Canada.

ERIGONUM CERNUUM, Nutt.

Sand hills at the crossing of Many Berries Creek near Milk River, Assa. Herb. No. 12947; on the banks of the South Saskatchewan at Police Point, Medicine Hat, Assa. Herb. No. 12946. (*John Macoun.*) New to Canada.

POLYGONUM BISTORTOIDES, Pursh.

On the summit of Sheep Mountain, Waterton Lake, Rocky Mountains, alt. 7,500 ft., July 31st, 1895. Herb. No. 12989. (*John Macoun.*) New to Canada. Arctic American specimens referred to *P. bistorta* seem to be intermediate between that species and *P. bistortoides*.

SASSAFRAS OFFICINALE, Nees.

Near Sarnia, Lambton Co., Ont. (*C. K. Dodge.*) Northwestern limit in Ontario.

QUERCUS ALBA, L.

Elevated shore of Rainy Lake, Ont., 1896. (*W. McInnes.*) Western limit in Canada.

CYPRIPEDIUM ACAULE, Ait.; Macoun, Cat. Can. Plants, Vol. II, p. 22.

Dry hillock of sand and boulders. Lat. 57° 30', Long. 107°. (*Jas. W. Tyrell.*)

UVULARIA PERFOLIATA, L.; Macoun, Cat. Can. Plants, Vol. II, p. 44.

Near Niagara, Ont., 1890. (*J. Dearness.*) Jordan Station, near Niagara, Ont., 1892. (*John Macoun.*) Very rare and not collected for many years.

ALETTRIS FARINOSA, L.; Macoun, Cat. Can. Plants, Vol. II.,
p. 23.

Common at Sandwich, Ont. (*John Macoun.*) Near
Sarnia, Lambton Co., Ont. (*C. K. Dodge. J. Dearness.*)
Only recorded before from Leamington, Ont.

ERYTHRONIUM ALBIDUM, Nutt.; Macoun, Cat. Can. Plants,
Vol. II., p. 41.

Stag Island in St. Clair River, 5 miles below Sarnia,
Ont. (*C. K. Dodge.*) North-western limit.

SCIRPUS CAMPESTRIS, Britton.

S. maritimus, Macoun, Cat. Can., Vol. II., p. 100 in
part.

Common throughout the prairie region. Our herbarium
specimens are from Red River, Man. (*Douglas.*) File
Hills, Assa.; Thunder Creek, Moose Jaw, Assa.; Park
Beg, Assa. Herb. No. 16411; Milk River, Alberta. Herb.
No. 16412. (*John Macoun.*)

SCIRPUS SMITHI, A. Gray.

In wet sand, Toronto Island, Ont., 1886. (*Wm. Scott.*)
New to Canada.

SCIRPUS DEBILIS, Pursh.

Muddy places, Queenston Heights, Ont., 1896. (*Wm.*
Scott.) New to Canada.

FIRMBRISTYLIS CASTANEA (Michx.), Vahl.

Walpole Island, Lambton Co., Ont., 1894. (*C. K. Dodge.*)
New to Canada.

ELEOCHARIS MUTATA (L.), R. & G.

E. quadrangulata, R. & S.

Sarnia Bay, near Sarnia, Ont., 1896. (*C. K. Dodge.*)
New to Canada.

