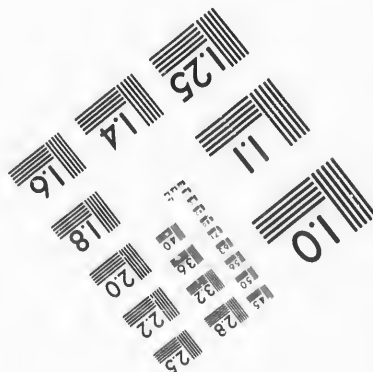
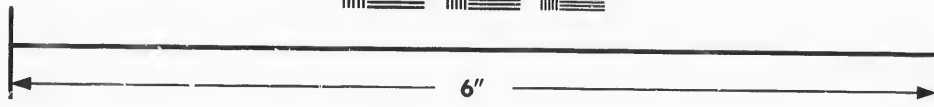
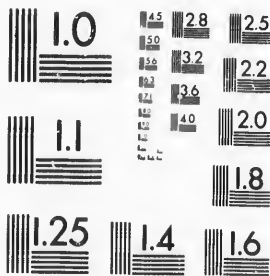


**IMAGE EVALUATION
TEST TARGET (MT-3)**



**Photographic
Sciences
Corporation**

23 WEST MAIN STREET
WEBSTER, N.Y. 14580
(716) 872-4503

**CIHM/ICMH
Microfiche
Series.**

**CIHM/ICMH
Collection de
microfiches.**



Canadian Institute for Historical Microreproductions / Institut canadien de microreproductions historiques

© 1987

The copy filmed here has been reproduced thanks to the generosity of:

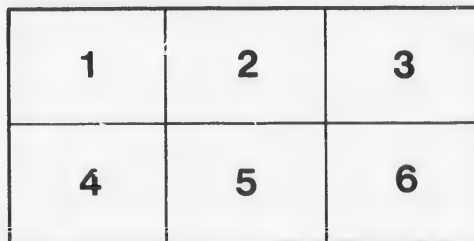
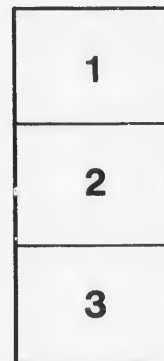
The Nova Scotia
Legislative Library

The images appearing here are the best quality possible considering the condition and legibility of the original copy and in keeping with the filming contract specifications.

Original copies in printed paper covers are filmed beginning with the front cover and ending on the last page with a printed or illustrated impression, or the back cover when appropriate. All other original copies are filmed beginning on the first page with a printed or illustrated impression, and ending on the last page with a printed or illustrated impression.

The last recorded frame on each microfiche shall contain the symbol \rightarrow (meaning "CONTINUED"), or the symbol ∇ (meaning "END"), whichever applies.

Maps, plates, charts, etc., may be filmed at different reduction ratios. Those too large to be entirely included in one exposure are filmed beginning in the upper left hand corner, left to right and top to bottom, as many frames as required. The following diagrams illustrate the method:



L'exemplaire filmé fut reproduit grâce à la générosité de:

The Nova Scotia
Legislative Library

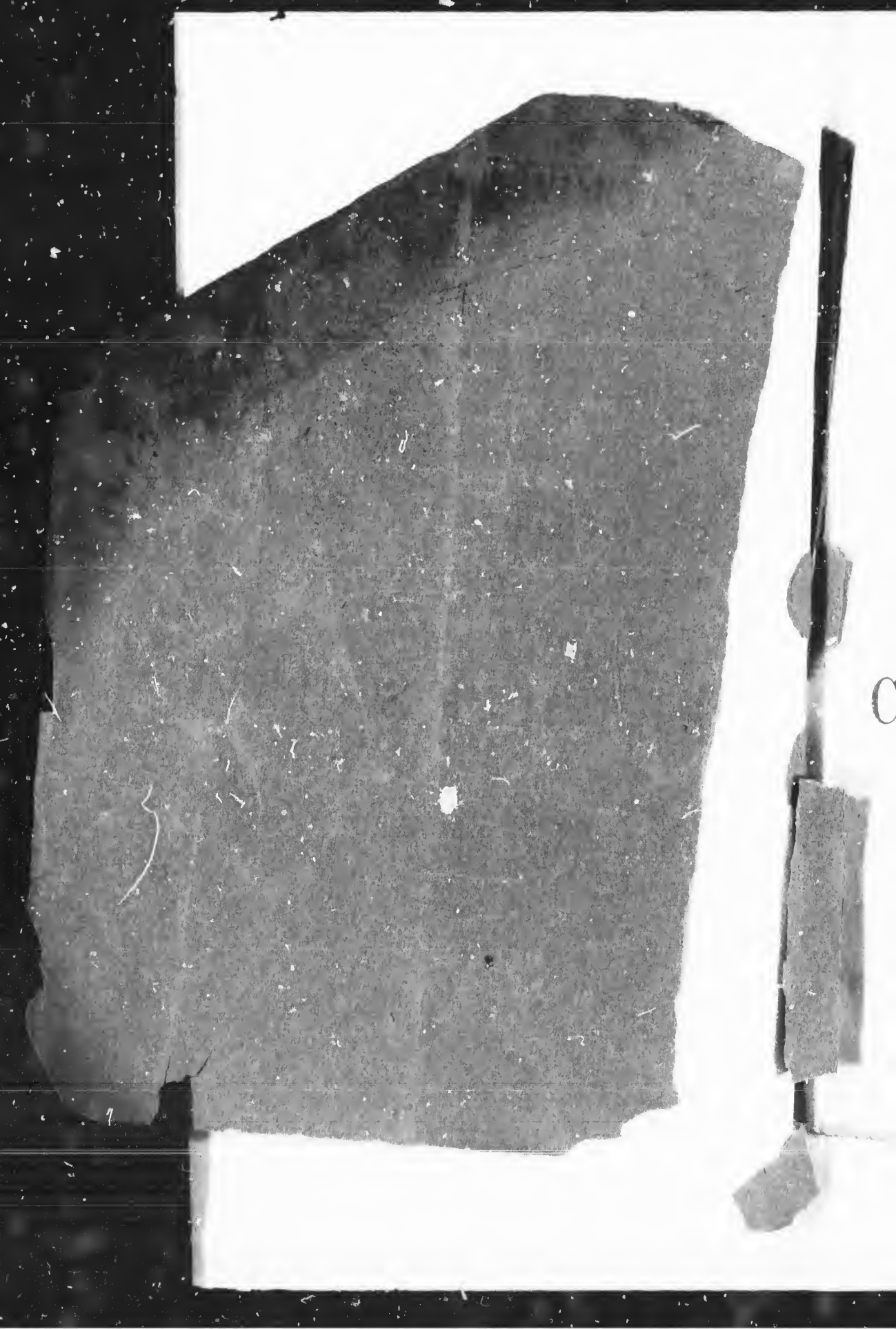
Les images suivantes ont été reproduites avec le plus grand soin, compte tenu de la condition et de la netteté de l'exemplaire filmé, et en conformité avec les conditions du contrat de filmage.

Les exemplaires originaux dont la couverture en papier est imprimée sont filmés en commençant par le premier plat et en terminant soit par la dernière page qui comporte une empreinte d'impression ou d'illustration, soit par le second plat, selon le cas. Tous les autres exemplaires originaux sont filmés en commençant par la première page qui comporte une empreinte d'impression ou d'illustration et en terminant par la dernière page qui comporte une telle empreinte.

Un des symboles suivants apparaîtra sur la dernière image de chaque microfiche, selon le cas: le symbole \rightarrow signifie "A SUIVRE", le symbole ∇ signifie "FIN".

Les cartes, planches, tableaux, etc., peuvent être filmés à des taux de réduction différents. Lorsque le document est trop grand pour être reproduit en un seul cliché, il est filmé à partir de l'angle supérieur gauche, de gauche à droite, et de haut en bas, en prenant le nombre d'images nécessaire. Les diagrammes suivants illustrent la méthode.





CONSTITUTION
AND
RULES
OF THE
Lay Association
OF THE
CHURCH OF SCOTLAND
WITHIN THE SYNOD OF NOVA SCOTIA.

PICTOU,
S. KELLEY, PRINTER.
1857.

NS

255.2

C

2504

W
e
C
in
o
m
fo

We, the subjoined, members of the Church of Scotland in this colony, being convinced that the time has arrived when a general and united effort should be made to render our Church, as far as in us lies, self-sustaining, and while feeling and expressing the deepest gratitude to the parent Church for the generous and continued aid which she has for so long a period extended to us, yet in our present improved circumstances, deeming it both unjust to the parent Church and humiliating to ourselves to remain any longer a burden upon the Colonial Committee, to the amount of not less than £1,200 annually, We do hereby form ourselves into an Association, comprising, as far as possible, all the members of our Church whose object shall be to place that Church in an independent position, by the regular and stated collection of a sum, so small that no one may feel it; and, in order more effectually to carry it out, we have drawn up the following Rules.



RULES.

1. This Association shall be called "THE LAY ASSOCIATION IN SUPPORT OF THE PRESBYTERIAN CHURCH OF NOVA SCOTIA AND PRINCE EDWARD'S ISLAND IN CONNECTION WITH THE CHURCH OF SCOTLAND", and shall consist of members and adherents of said Church within said bounds.

2. The object of this Association shall be the aiding and supplementing of the several schemes, in order to render the Church of Scotland in this Synod ultimately self-sustaining.

3. Presbyterians in connection with the Church who shall pay an annual subscription of Two Shillings and Six-pence, or upwards, shall be members of this Association. Any person contributing Five Pounds at any one time shall by so doing become a member for life.

4. The office-bearers of the Association shall consist of a President, two Vice Presidents, Corresponding Secretary, Secretary, and Treasurer.

5. The representatives to be chosen by the Branch Association, as hereinafter mentioned, shall be the executive body of the Association, and shall be called the "GENERAL COMMITTEE OF MANAGEMENT," which Com. shall meet annually, at the same time and place with the

Rules and Bye Laws for the Government of the Association.

6. Branch Associations shall be established in the different congregations connected with the Church, and shall be represented at the meeting of the General Committee, by members chosen annually—organized congregations returning two members, and mission stations returning one member.

7. Each Branch Association shall annually elect a Chairman, Treasurer, and Secretary, who along with three others to be chosen by the members, shall compose the Committee of Management.

8. The Branch Associations shall meet at least once a quarter, elect their own officers and collectors, and make Bye Laws for their local government, which Bye-Laws shall be submitted to the meeting of the general Committee for its approval.

9. All Funds in the hands of the local treasurers shall be paid to the general treasurer once a quarter, and every branch Association shall make an annual Return and Report of their proceedings to the general secretary, at least two weeks before the annual meeting of the Association.

10. Seven members shall constitute a quorum at the general meeting.

DIR

TH

to pr
and h
and h
contr
point
subdi
each
every
tions.

Th
enlist
gation
by th

Th
be car
operat
upon
part o

Th
served
to the
and is

DIRECTIONS TO BRANCH ASSOCIATIONS.

The officers of each branch Association are requested to prepare a list of the names of every person, both male and female, resident within the limits of the congregation and belonging to the Church of Scotland, who is able to contribute any sum, however small; and upon the appointment of collectors it is recommended that this list be subdivided, and a certain number of names assigned to each collector, who shall then be requested to call upon every individual indicated in his list, and solicit subscriptions.

The Branch Associations should use every effort to enlist the sympathy of the female portion of the congregations, either by organizing female auxiliary societies or by the appointment of female collectors.

The collectors appointed, both male and female, should be carefully selected; for it is evident that the successful operation of the scheme will in a great measure depend upon the faithful and zealous discharge of duty on the part of these collectors.

The lists prepared as above should be carefully preserved, and correct copies of the same annually returned to the general secretary, as it is intended yearly to print and issue the most copious statistics of the Association.

Directors should make regular quarterly collections, and pay in the amounts to the branch treasurer as soon as received, with permission, however, to accept in one sum the whole annual subscription of any person who should feel inclined so to pay.

The Branch Associations will of course make such Bye Laws as their particular circumstances may seem to require—always keeping in view the rules and regulations of the General Committee.



