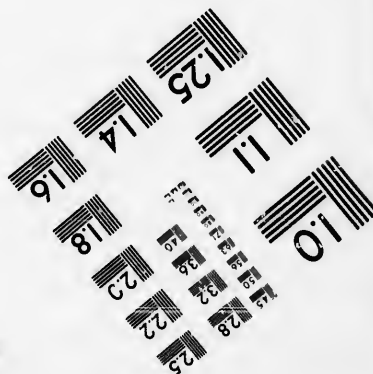
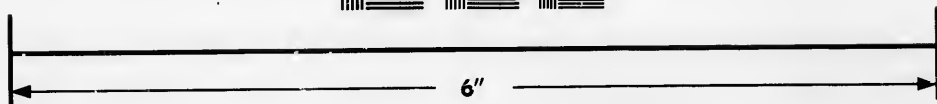
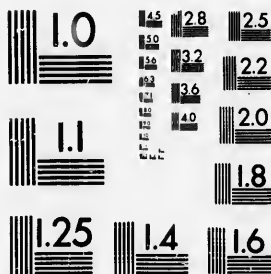


**IMAGE EVALUATION
TEST TARGET (MT-3)**



**Photographic
Sciences
Corporation**

23 WEST MAIN STREET
WEBSTER, N.Y. 14580
(716) 872-4503

14 28
16 32
18 22
20 25

**CIHM/ICMH
Microfiche
Series.**

**CIHM/ICMH
Collection de
microfiches.**



Canadian Institute for Historical Microreproductions / Institut canadien de microreproductions historiques

11
01

© 1985

Technical and Bibliographic Notes/Notes techniques et bibliographiques

The Institute has attempted to obtain the best original copy available for filming. Features of this copy which may be bibliographically unique, which may alter any of the images in the reproduction, or which may significantly change the usual method of filming, are checked below.

L'Institut a microfilmé le meilleur exemplaire qu'il lui a été possible de se procurer. Les détails de cet exemplaire qui sont peut-être uniques du point de vue bibliographique, qui peuvent modifier une image reproduite, ou qui peuvent exiger une modification dans la méthode normale de filmage sont indiqués ci-dessous.

- | | |
|---|---|
| <input type="checkbox"/> Coloured covers/ Couverture de couleur | <input type="checkbox"/> Coloured pages/ Pages de couleur |
| <input type="checkbox"/> Covers damaged/ Couverture endommagée | <input type="checkbox"/> Pages damaged/ Pages endommagées |
| <input type="checkbox"/> Covers restored and/or laminated/ Couverture restaurée et/ou pelliculée | <input type="checkbox"/> Pages restored and/or laminated/ Pages restaurées et/ou pelliculées |
| <input type="checkbox"/> Cover title missing/ Le titre de couverture manqué | <input checked="" type="checkbox"/> Pages discoloured, stained or foxed/ Pages décolorées, tachetées ou piquées |
| <input type="checkbox"/> Coloured maps/ Cartes géographiques en couleur | <input type="checkbox"/> Pages detached/ Pages détachées |
| <input type="checkbox"/> Coloured ink (i.e. other than blue or black)/ Encre de couleur (i.e. autre que bleue ou noire) | <input checked="" type="checkbox"/> Showthrough/ Transparence |
| <input type="checkbox"/> Coloured plates and/or illustrations/ Planches et/ou illustrations en couleur | <input type="checkbox"/> Quality of print varies/ Qualité inégale de l'impression |
| <input type="checkbox"/> Bound with other material/ Relié avec d'autres documents | <input type="checkbox"/> Includes supplementary material/ Comprend du matériel supplémentaire |
| <input type="checkbox"/> Tight binding may cause shadows or distortion along interior margin/ La reliure serrée peut causer de l'ombre ou de la distorsion: le long de la marge intérieure | <input type="checkbox"/> Only edition available/ Seule édition disponible |
| <input type="checkbox"/> Blank leaves added during restoration may appear within the text. Whenever possible, these have been omitted from filming/ Il se peut que certaines pages blanches ajoutées lors d'une restauration apparaissent dans le texte, mais, lorsque cela était possible, ces pages n'ont pas été filmées. | <input type="checkbox"/> Pages wholly or partially obscured by errata slips, tissues, etc., have been refilmed to ensure the best possible image/ Les pages totalement ou partiellement obscurcies par un feuillet d'errata, une pelure, etc., ont été filmées à nouveau de façon à obtenir la meilleure image possible. |
| <input checked="" type="checkbox"/> Additional comments: [Printed ephemera] 1 sheet (verso blank) Commentaires supplémentaires: | |

This item is filmed at the reduction ratio checked below/
Ce document est filmé au taux de réduction indiqué ci-dessous.

| | | | | | | | | | | | |
|-----|-----|-----|-----|-----|-----|-----|-----|-----|-----|-----|-----|
| 10X | 12X | 14X | 16X | 18X | 20X | 22X | 24X | 26X | 28X | 30X | 32X |
| | | | | | | | ✓ | | | | |

The copy filmed here has been reproduced thanks to the generosity of:

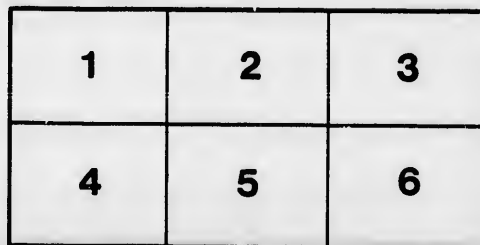
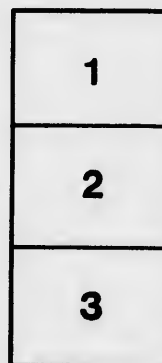
D. B. Weldon Library
University of Western Ontario
(Regional History Room)

The images appearing here are the best quality possible considering the condition and legibility of the original copy and in keeping with the filming contract specifications.

Original copies in printed paper covers are filmed beginning with the front cover and ending on the last page with a printed or illustrated impression, or the back cover when appropriate. All other original copies are filmed beginning on the first page with a printed or illustrated impression, and ending on the last page with a printed or illustrated impression.

The last recorded frame on each microfiche shall contain the symbol \rightarrow (meaning "CONTINUED"), or the symbol ∇ (meaning "END"), whichever applies.

Maps, plates, charts, etc., may be filmed at different reduction ratios. Those too large to be entirely included in one exposure are filmed beginning in the upper left hand corner, left to right and top to bottom, as many frames as required. The following diagrams illustrate the method:



L'exemplaire filmé fut reproduit grâce à la générosité de:

D. B. Weldon Library
University of Western Ontario
(Regional History Room)

Les images suivantes ont été reproduites avec le plus grand soin, compte tenu de la condition et de la netteté de l'exemplaire filmé, et en conformité avec les conditions du contrat de filmage.

Les exemplaires originaux dont la couverture en papier est imprimée sont filmés en commençant par le premier plat et en terminant soit par la dernière page qui comporte une empreinte d'impression ou d'illustration, soit par le second plat, selon le cas. Tous les autres exemplaires originaux sont filmés en commençant par la première page qui comporte une empreinte d'impression ou d'illustration et en terminant par la dernière page qui comporte une telle empreinte.

Un des symboles suivants apparaîtra sur la dernière image de chaque microfiche, selon le cas: le symbole \rightarrow signifie "A SUIVRE", le symbole ∇ signifie "FIN".

Les cartes, planches, tableaux, etc., peuvent être filmés à des taux de réduction différents. Lorsque le document est trop grand pour être reproduit en un seul cliché, il est filmé à partir de l'angle supérieur gauche, de gauche à droite, et de haut en bas, en prenant le nombre d'images nécessaire. Les diagrammes suivants illustrent la méthode.

rrata
to

pelure.
n à

CIRCULAR No. 1. _____

Canadian Military Rifle League.

HAMILTON, April 15th, 1899.

DEAR SIR :

I beg to inform you that the following dates have been fixed by the Council for the League Matches, season 1899, namely : May 27th, June 3rd, July 8th and July 22nd.

The series will be the same as last year, viz ; 1st. Martini or Lee-Enfield Rifles (ranges 200, 500 and 600 yards). 2nd or cavalry series : First section, Lee-Metford or Lee-Enfield Carbines (ranges 200, 500 and 600 yards). Second section, Snider or Winchester Carbines (ranges 200, 300 and 400 yards), provided that there are at least three entries in each series or section.

Teams shall consist of ten men. Entrance fee ten dollars per team. When more than one team from the same organization enters, the fee will be ten dollars for the first team and five dollars for each additional team.

Entries accompanied by fees must be made to Lieut. W. L. Ross, Treasurer, C.M.R.L., Hamilton, not later than Saturday 13th May, stating which series such entry is for.

Prizes, as well as championship badges, will be given by the League, also first and second class marksman's certificates (suitable for framing) to those who make the necessary percentage of marks in the four competitions. These certificates are issued by authority of the Department of Militia and Defence, are signed by the Minister of Militia and the Major-General Commanding, as well as by the President and Secretary of the League.

Score sheets and all necessary information for conducting the matches will be sent on receipt of entries.

The Department of Militia and Defence will issue ammunition for these matches free of charge.

Scores will not be telegraphed, but must be mailed to the Secretary immediately after the conclusion of each match, and the official scores will be published in the Canadian Military Gazette.

The Council trust that all Commanding Officers and Presidents of Rifle Associations will make arrangements to enter one or more teams, and, as the time is short, it is hoped that these entries will be made without delay.

Your obedient servant,

ALBERT PAIN, LIEUT.,

SECRETARY C.M.R.L.,
36 MERRICK STREET.

