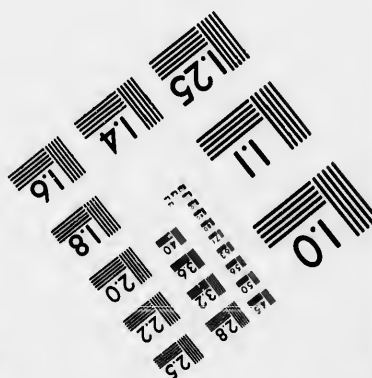
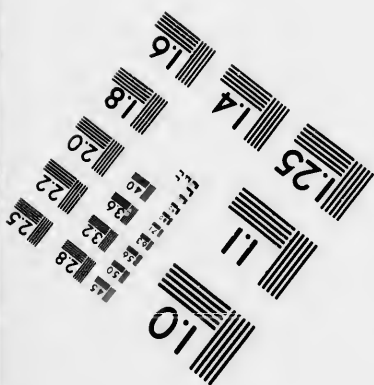
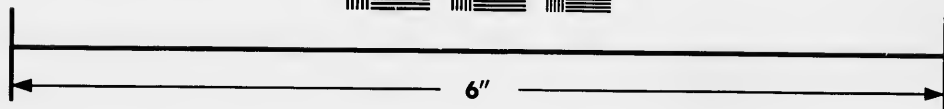
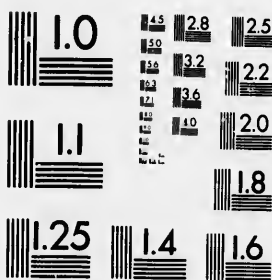


**IMAGE EVALUATION
TEST TARGET (MT-3)**



**Photographic
Sciences
Corporation**

23 WEST MAIN STREET
WEBSTER, N.Y. 14580
(716) 872-4503

**CIHM
Microfiche
Series
(Monographs)**

**ICMH
Collection de
microfiches
(monographies)**



Canadian Institute for Historical Microreproductions / Institut canadien de microreproductions historiques

© 1993

Technical and Bibliographic Notes / Notes techniques et bibliographiques

The Institute has attempted to obtain the best original copy available for filming. Features of this copy which may be bibliographically unique, which may alter any of the images in the reproduction, or which may significantly change the usual method of filming, are checked below.

L'Institut a microfilmé le meilleur exemplaire qu'il lui a été possible de se procurer. Les détails de cet exemplaire qui sont peut-être uniques du point de vue bibliographique, qui peuvent modifier une image reproduite, ou qui peuvent exiger une modification dans la méthode normale de filmage sont indiqués ci-dessous.

- Coloured covers/
Couverture de couleur
- Covers damaged/
Couverture endommagée
- Covers restored and/or laminated/
Couverture restaurée et/ou pelliculée
- Cover title missing/
Le titre de couverture manque
- Coloured maps/
Cartes géographiques en couleur
- Coloured ink (i.e. other than blue or black)/
Encre de couleur (i.e. autre que bleue ou noire)
- Coloured plates and/or illustrations/
Planches et/ou illustrations en couleur
- Bound with other material/
Relié avec d'autres documents
- Tight binding may cause shadows or distortion along interior margin/
La reliure serrée peut causer de l'ombre ou de la distorsion le long de la marge intérieure
- Blank leaves added during restoration may appear within the text. Whenever possible, these have been omitted from filming/
Il se peut que certaines pages blanches ajoutées lors d'une restauration apparaissent dans le texte, mais, lorsque cela était possible, ces pages n'ont pas été filmées.

- Coloured pages/
Pages de couleur
- Pages damaged/
Pages endommagées
- Pages restored and/or laminated/
Pages restaurées et/ou pelliculées
- Pages discoloured, stained or foxed/
Pages décolorées, tachetées ou piquées
- Pages detached/
Pages détachées
- Showthrough/
Transparence
- Quality of print varies/
Qualité inégale de l'impression
- Continuous pagination/
Pagination continue
- Includes index(es)/
Comprend un (des) index

Title on header taken from: /
Le titre de l'en-tête provient:

- Title page of issue/
Page de titre de la livraison
- Caption of issue/
Titre de départ de la livraison
- Masthead/
Générique (périodiques) de la livraison

- Additional comments: /
Commentaires supplémentaires:

This item is filmed at the reduction ratio checked below /
Ce document est filmé au taux de réduction indiqué ci-dessous.

10X	14X	18X	22X	26X	30X
<input type="checkbox"/>	<input type="checkbox"/>	<input type="checkbox"/>	<input checked="" type="checkbox"/>	<input type="checkbox"/>	<input type="checkbox"/>
12X	16X	20X	24X	28X	32X

The copy filmed here has been reproduced thanks to the generosity of:

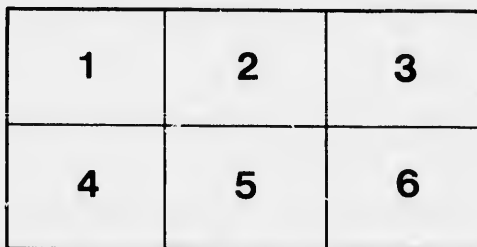
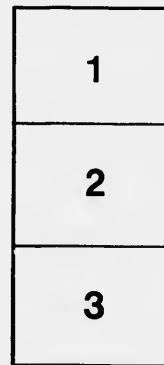
National Library of Canada

The images appearing here are the best quality possible considering the condition and legibility of the original copy and in keeping with the filming contract specifications.

Original copies in printed paper covers are filmed beginning with the front cover and ending on the last page with a printed or illustrated impression, or the back cover when appropriate. All other original copies are filmed beginning on the first page with a printed or illustrated impression, and ending on the last page with a printed or illustrated impression.

The last recorded frame on each microfiche shall contain the symbol → (meaning "CONTINUED"), or the symbol ▼ (meaning "END"), whichever applies.

Maps, plates, charts, etc., may be filmed at different reduction ratios. Those too large to be entirely included in one exposure are filmed beginning in the upper left hand corner, left to right and top to bottom, as many frames as required. The following diagrams illustrate the method:



L'exemplaire filmé fut reproduit grâce à la générosité de:

Bibliothèque nationale du Canada

Les images suivantes ont été reproduites avec le plus grand soin, compte tenu de la condition et de la netteté de l'exemplaire filmé, et en conformité avec les conditions du contrat de filmage.

Les exemplaires originaux dont la couverture en papier est imprimée sont filmés en commençant par le premier plat et en terminant soit par la dernière page qui comporte une empreinte d'impression ou d'illustration, soit par le second plat, selon le cas. Tous les autres exemplaires originaux sont filmés en commençant par la première page qui comporte une empreinte d'impression ou d'illustration et en terminant par la dernière page qui comporte une telle empreinte.

Un des symboles suivants apparaîtra sur la dernière image de chaque microfiche, selon le cas: le symbole → signifie "À SUIVRE", le symbole ▼ signifie "FIN".

Les cartes, planches, tableaux, etc., peuvent être filmés à des taux de réduction différents. Lorsque le document est trop grand pour être reproduit en un seul cliché, il est filmé à partir de l'angle supérieur gauche, de gauche à droite, et de haut en bas, en prenant le nombre d'images nécessaire. Les diagrammes suivants illustrent la méthode.

6. 6
GEOLOGICAL SURVEY OF CANADA,
ALFRED R. C. SELWYN, DIRECTOR.

LIST OF PLANTS
OF THE
MANITOULIN ISLANDS,
LAKE HURON,
BY
JOHN BELL, M.A., M.D.

(Appendix to the Reports of the Geological Survey of the Dominion of Canada, 1867-69.)



MONTREAL:
1870.

APPENDIX.
ON THE PLANTS OF THE MANITOULIN ISLANDS

BY

JOHN BELL, M.A., M.D.

The plants whose names are contained in the following list, I collected during the summer of 1866,* while with my brother on a geological exploration of some of the islands of the Manitoulin group. The list is a very incomplete one of the flora of the district examined, as the collection of plants was made entirely subordinate to the proper work of the expedition. I, however, seized the opportunities afforded at various stations, from Owen Sound northward, to make notes of the local flora, and collect specimens, in order to ascertain the range of many plants in that interesting region.

Most of the plants were collected on Cockburn, Drummond and St. Joseph Islands, the geological survey of which was the object of the expedition. Some of the smaller islands were also touched at, and a visit to Gore Bay, on the north side of Grand Manitoulin Island, enabled me to obtain some rare specimens from that point, and from the interior of the island to the south and south-east of it. While detained a few days at Owen Sound, previous to starting, I collected plants in different directions, and found several rare species of ferns growing luxuriantly and in abundance on or near the limestone escarpment to the south-west of the town. A number of specimens were also obtained at the Bruce Mines, and in the vicinity, on two different occasions.

The physical geography of the several islands mentioned above differs considerably, and with it the vegetation. St. Joseph Island is, for the greater part of its extent, somewhat elevated, consisting, apparently, of sand and gravel, covered over with a thin layer of vegetable mould. The land rises gradually from the lake shore towards the middle of the island. Nearly in its centre, however, there is a depression, the bottom of which is occupied by a small lake. On the dry gravelly soil of St. Joseph Island a very heavy growth of hard-wood forest was found, consisting of beech, hard maple, hemlock, bass-wood, black and yellow birch, with a few rather scraggy white pines; while on the lower ground they were almost replaced by black ash, cedar, balsam-of-Gilead and aspen-poplar, balsam-fir, elm, mountain-ash, and many small and arborescent shrubs. The red elder was very conspicuous by its abundance and the profusion of its clusters of bright scarlet berries. From the circumstance that this island is immediately in the course of both the American and Canadian steamers and other vessels, large quantities of cord-wood are now cut and sold to them. In the future there is no doubt that the forests of this island will be of great value for fire-wood, if not for timber.

A traverse across the island, from Hilton town-plot, on the north side, to Richardson's, on the south, was made on the 25th July, so that the plants mentioned as having been found at these places, and in the interior of the island, were collected on that and the fol-

* See Report by Mr. Robert Be page 109.

lowing day. The plants from the Bruce Mines were obtained on the 24th July and 28th August. We visited the small island at the east end of St. Joseph on July 28th, and Bay Point, on the south side, on the 1st September.

Drummond Island, the next to the east of St. Joseph, by a northward curve in the international boundary line, is included in the territory of the United States. The level of this island is lower than that of the others, and the land is, in a large extent, flat and marshy, the trees being for the most part small balsams, tamaracks, and spruces. On the north side the island is more hilly than on the south, and on that side heavier forest are met with than on the south, the prevailing trees being hard maple, beech, basswood, iron-wood, balsam-fir, poplar and white cedar, with some white pine. In some places the flat limestone rocks come to the surface, and support only a sparse, stunted growth of firs, with patches of moss and lichen between; while in others a dense thicket of firs and shrubs covers a swamp or borders a rivulet.

The plants obtained from the south-west corner of Drummond Island were collected between the 31st July and 2nd August, and those from the south-east corner on the 4th August; while the collections from Sidgrave Cove, on the north side of the island, were made on the 9th August, and those from Vermont and Medford Harbours, on the north-west part, on the 30th and 31st August.

From the lake the aspect of the land on Drummond and Cockburn Islands is quite different. High land, covered with hard-wood, runs through the centre of Cockburn Island, which lies between Drummond and the Grand Manitoulin, having on the west side of it the False Detour Channel, and on the east the Straits of Missisagui. Towards the shore of the island, firs are most numerous. The whole of the forest on this island is much heavier than that of its more level neighbour. The eastern side of the island is undulating or hilly, the valleys running in a south-westerly direction. The most notable characteristic of the forest on this island is the quantity of red pine (*Pinus resinosa*) which occurs in it. Few of the trees seen of this species were very large, but in places they are very numerous (particularly in the bay to the east of the south-west point of the island), and large enough for making into timber for frames of houses.

Collections of plants were made in this island at the following dates:—South-west point of the island, August 6th; interior and north part of the island, August 6th and 7th; Thompson's Point, August 11th; Sandy Bay, north side, August 13th; McLeod's Harbour and Huronia Point, on the east side, August 21st; Little Cockburn Island, in the False Detour Channel, August 5th.

Cape Smyth, at the east end of the Grand Manitoulin Island, was visited on the 17th July, and Gore Bay, on the north side of the same island, on the 15th August. The forest south of Gore Bay resembles very much that of Cockburn Island. A good many white-pine trees were seen to the south-west of Gore Bay, and red pine occurs towards Lake Kugewong, and also at the west end of the island. Fires have passed through a large extent of the woods to the south and south-east of Gore Bay, killing the trees and causing them to fall. Lying across one another, two or three deep, the interspaces filled up with brushwood and a rank growth of willow-herb (*Epilobium angustifolium*), which always abounds in these *brulés*, these bare and charred trees form an almost impassable barrier to the explorer. The marsh at the foot of Gore Bay, and the high cliffs on its eastern side, afforded a number of rare plants.

Missisagui Island is small, flat, and sandy, with two marshy ponds in its centre, and lies to the north of the straits of the same name. Part of it is covered with trees, and the rest is made up of sand-reaches partially covered with vegetation. It was visited on the 22nd July.

William Island of the charts (locally known as Whiskey Island), at the mouth of Wewemakong Bay, east end of Grand Manitoulin, was touched at on July 18th and September 15th. This island, like many in the neighbourhood, is low and flat, and is all wooded, with the exception of an open sandy space at its western extremity, on which I

found several unusual species of plants, and which, from the bones scattered over its surface, may have been an Indian burying-place.

In these remote settlements the growth of foreign weeds seems to keep pace with the settlers, and even to outstrip them in their advances into the forests. This is to be regretted, as much might be done, by careful selection of seed-grain and other means, to exclude many noxious weeds from these new and isolated settlements.

To Professor Asa Gray, of Harvard University, I am much indebted for his kindness in determining the species of several of the plants in the following list:—

RANUNCULACEÆ.

1. *Clematis Virginiana*, L.—South of Gore Bay, Grand Manitoulin Island.
3. *Anemone multifida*, DC.—Drummond Island.
3. " *Virginiana*, L.—S. W. extremity of Cockburn Island, and at Sandy Bay, on the north side, Gore Bay, Grand Manitoulin Island.
4. " *Pennsylvanica*, L.—Owen Sound, Mississagui Island, Bruce Mines, middle of St. Joseph Island, S. W. corner of Cockburn Island, Sidgrave's Cove, Drummond Island, Gore Bay.
5. *Hepatica triloba*, Chaix.—McLeod's Harbour, E. end Cockburn Island, Vermont Harbour, Drummond Island.
6. " *acutifolia*, DC.—Owen Sound.
7. *Thalictrum Cornuti*, L.—Owen Sound, Mississagui Island.
8. *Ranunculus aquatilis*, L., Var. *divaricatus*, Gray.—Owen Sound, Sandy Bay, N. side of Cockburn Island, Gore Bay.
9. " *Flammula*, L., Var. *reptans*, L.—Whiskey, or William Island, E. end of Grand Manitoulin Island, Mississagui Island, E. end of St. Joseph Island, Drummond Island, Gore Bay.
10. " *sceleratus*, L.—Owen Sound.
11. " *recurvatus*, Poir.—Owen Sound.
12. " *Pennsylvanicus*, L.—Little Current, Bruce Mines, centre of St. Joseph Island, S.W. corner of Cockburn Island, Gore Bay.
13. " *repens*, L.—Owen Sound, Sidgrave's Cove, Drummond Island, Gore Bay.
14. " *acris*, L.—Bruce Mines.
15. *Caltha palustris*, L.—Owen Sound, border of the lake in the centre of St. Joseph Island, Cockburn Island, Drummond Island.
16. *Coptis trifolia*, Salisb.—Hilton Village, or Town-plot, St. Joseph's Island, McLeod's Harbour, Cockburn Island.
17. *Aquilegia Canadensis*, L.—Owen Sound, Sidgrave's Cove, Drummond Island, McLeod's Harbour.
18. *Actæa spicata*, L., Var. *rubra*.—Owen Sound, Hilton Lake, centre of St. Joseph Island, Cockburn Island, Drummond Island.
Var. *alba*.—Owen Sound.

NYMPHÆACEÆ.

19. *Nymphæa odorata*, Ait.—Sandy Bay, Cockburn Island.
20. *Nuphar advena*, Ait.—Owen Sound, Drummond Island, Thompson Point, N. side of Cockburn Island, McLeod's Harbour.

SARRACENIACEÆ.

21. *Sarracenia purpurea*, L.—Drummond Island, McLeod's Harbour, Cockburn Island.

PAPAVERACEÆ.

22. *Sanguinaria Canadensis*, L.—Centre of St. Joseph Island.

FUMARIACEÆ.

23. *Allium cirrhosa*, Ruf.—Gore Bay. Growing thirty feet high.
 24. *Corydalis aurea*, Willd.—Cockburn Island, S.W. corner; and at McLeod's Harbour, E. end.
 25. " *glauca*, Pursh.—Richardson's, south side, St. Joseph Island, S. W. corner and McLeod's Harbour, Cockburn Island, Sidgrave's Cove, Drummond Island.

CRUCIFERÆ.

26. *Nasturtium officinale*, R. Br.—Owen Sound. Of large size, and growing in great quantities in a spring brook.
 27. " *palustre*, DC.—Owen Sound, Whiskey Island, Mississagui Island, Bruce Mines.
 28. *Dentaria diphylla*, L.—Owen Sound.
 29. *Cardamine pratensis*, L.—Whiskey Island.
 30. " *hirsuta*, L.—Cockburn Island, Owen Sound.
 31. *Arabis lyrata*, L.—Cockburn Island.
 32. *Turritis glabra*, L.—Whiskey Island.
 33. " *stricta*, Graham.—Whiskey Island, Mississagui Island.
 34. *Barbarea vulgaris*, R. Br.—Mississagui Island, Richardson's, S. side of St. Joseph Island, Cockburn, Drummond, and Whiskey Islands.
 35. *Sisymbrium officinale*, Scop.—Owen Sound.
 36. " *canescens*, Nutt.—Whiskey Island.
 37. *Lepidium Virginicum*, L.—Owen Sound, Whiskey Island, Little Current.
 38. *Capsella bursa-pastoris*, Moench.—Owen Sound, Bruce Mines.
 39. *Cakile Americana*, Nutt.—Cockburn Island, S. W. point, and McLeod's Harbour.

VIOLACEÆ.

40. *Viola blanda*, Wild.—Middle of St. Joseph Island, McLeod's Harbour, Cockburn Island.
 41. " *Selkirkii*, Goldie?—McLeod's Harbour.
 42. " *cucullata*, Ait.—Owen Sound, St. Joseph Island, Cockburn Island, Gore Bay.
 43. " *rostrata*, Pursh?—Owen Sound.
 44. " *Muhlenbergii*, Torr.—McLeod's Harbour.
 45. " *Canadensis*, L.—Owen Sound, centre of St. Joseph Island.
 46. " *pubescens*, Ait.—Owen Sound, Gore Bay, Vermont Harbour, Drummond Island.

DROSERACEÆ.

47. *Drosera rotundifolia*, L.—Drummond Island, S.W. point, and McLeod's Harbour, Cockburn Island.
 48. " *linearis*, Goldie.—In same localities as last.

PARNASSIACEÆ.

49. *Parnassia palustris*, L.—Drummond Island.
 50. " *Caroliniana*, Michx.—McLeod's Harbour, Cockburn Island, Drummond Island.

HYPERICACEÆ.

51. *Hypericum mutilum*, L.—Mississagui Island, E. end of St. Joseph Island, Vermont Harbour, Drummond Island.
 52. " *Kalmianum*, L.—Whiskey, Mississagui, Cockburn and Drummond Islands Common on the shores.

53. *Elodea Virginica*, Nutt.—Mississagui Island, marsh near a small lake in the middle of St. Joseph Island, Thompson Point and McLeod Harbour, Cockburn Island.

CARYOPHYLLACEÆ.

54. *Silene antirrhina*, L.—Mississagui Island.
 55. " *noctiflora*, L.—Bruce Mines, Hilton Village.
 56. *Agrostemma Githago*, L.—Richardson's, S. side of St. Joseph Island.
 57. *Ailaine Michauxii*, Fenzl.—Drummond Island, S.W. point, and McLeod's Harbour, Cockburn Island.
 58. *Arenaria serpyllifolia*, L.—Owen Sound, Sidgrave Cove, Drummond Island.
 59. *Stellaria longifolia* Muhl.—Centre and S. side of St. Joseph Island.
 60. " *borealis*, Bigelow.—Richardson's, St. Joseph Island.
 61. *Cerastium viscosum*, L.—Bruce Mines, Hilton.
 62. " *arvense*, L.—Drummond Island.

TILIACEÆ

63. *Tilia Americana*, L.—Owen Sound, centre of St. Joseph Island, Cockburn Island N. side Gore Bay, Vermont Harbour, Drummond Island.

OXALIDACEÆ.

64. *Oxalis acetosella*, L.—Owen Sound.
 65. " *stricta*, L.—Owen Sound.

GERANIACEÆ.

66. *Geranium Robertianum*, L.—Owen Sound, Whiskey Island, Bruce Mines, Drummond and Cockburn Islands.

BALSAMINACEÆ.

67. *Impatiens fulva*, Nutt.—Mississagui, Drummond, Cockburn and St. Joseph Islands, Gore Bay.

ANACARDIACEÆ.

68. *Rhus typhina*, L.—Cape Smyth, E. end of Grand Manitoulin Island, Whiskey Island S.W. point, and McLeod's Harbour, Cockburn Island; Mississagui and Drummond Islands.
 69. " *Toxicodendron*, L., Common.—Cape Smyth, McLeod's Harbour, Whiskey Island, Mississagui Island, S.W. points of Drummond and Cockburn Islands.
 70. " *aromatica*, Ait.—Whiskey Island. Some years ago I collected this plant on Wolfe Island, opposite Kingston.

RHAMNACEÆ.

71. *Rhamnus alnifolius*, L'Her.—Drummond Island, Thompson Point and McLeod's Harbour, Cockburn Island.
 72. *Ceanothus ovalis*, Bigelow—Gore Bay, Grand Manitoulin Island.—Growing abundantly near the edge of the cliff on the E. side of the bay, near its mouth.

CELASTRACEÆ.

73. *Celastrus scandens*, L.—Owen Sound.

SAPINDACEÆ.

74. *Acer Pennsylvanicum*, L.—Hilton, S.W. of Cockburn Island, Gore Bay, Vermont Harbour.
 75. " *spicatum*, Lamb.—Owen Sound, Hilton, Cockburn Island, Gore Bay.
 76. " *saccharinum*, Wang.—Owen Sound, Hilton, Cockburn Island, Gore Bay, Vermont Harbour.
 77. " *rubrum*, L.—Centre of St. Joseph Island, E. end of same island, S.W. point of Cockburn Island, Gore Bay.

POLYGALACEÆ.

78. *Polygala Senega*, L.—Drummond Island, S.E. corner.
 79. " *polygama*, Walt.—Drummond Island.
 80. " *paucifolia*, Willd.—Cockburn and Drummond Islands.

LEGUMINOSÆ.

81. *Trifolium pratense*, L.—Cockburn Island, Owen Sound.
 82. " *repens*, L.—Owen Sound, Bruce Mines.
 83. *Astragalus Canadensis*, L.—E. end of Manitoulin Island.
 84. " *Cooperi*, Gray.—Whiskey Island, Gore Bay.
 85. *Lathyrus maritimus*, Bigelow.—Hilton, Mississagui Island.
 86. " *polustris*, L.—Owen Sound, E. end of Grand Manitoulin Island, lake in the middle of St. Joseph Island, Sidgrave Cove, McLeod's Harbour.
 87. " *myrtifolius*, Muhl.—Cockburn Island, Gore Bay.
 88. *Amphicarpa monoica*, Nutt.—Owen Sound.

ROSACEÆ.

89. *Prunus Americana*, Marsh.—Whiskey Island.
 90. " *pumila*, L.—Common on the shores of Whiskey, Mississagui, Drummond and Cockburn Islands.
 91. " *Pennsylvanica*, L.—Mississagui Island, Hilton, Whiskey Island, S.W. point, and McLeod's Harbour, Cockburn Island, Sidgrave Cove.
 92. " *Virginiana*, L.—St. Joseph, Drummond, Mississagui, Cockburn, and Whiskey (or William) Islands.
 93. *Spiræa opulifolia*, L.—Whiskey, Mississagui, Drummond, and Cockburn Islands.
 94. " *saticifolia*, L.—Mississagui Island.
 95. *Agromonia Eupatoria*, L.—Owen Sound, E. end of St. Joseph Island.
 96. *Geum album*, Gmetin.—Owen Sound.
 97. " *strictum*, Ait.—Owen Sound, Mississagui and Whiskey Islands, Hilton.
 98. " *rivale*, L.—Owen Sound.
 99. *Waldsteinia fragarioides*, Tratt.—Cockburn Island and Gore Bay.
 100. *Potentilla Norvegica*, L.—Owen Sound, Mississagui Island, Hilton, Drummond and Cockburn Islands.
 101. " *anserina*, L.—Owen Sound, Whiskey Island, Mississagui Island, Bruce Mines, W. side of Drummond Island, Hilton, Cockburn Island, Sidgrave Cove.
 102. " *fruticosa*, L.—Drummond and Cockburn Islands.
 103. " *palustris*, Scop.—Mississagui Island, Bruce Mines, Drummond Island, W. side of Sidgrave Cove, Thompson Point.
 104. *Fragaria Virginiana*, Ehrhart.—Hilton, Mississagui Island.
 105. " *vesca*, L.—Owen Sound, Richardson's, St. Joseph Island.

- Vermont
Bay, Ver-
7. point of
106. *Dalibarda repens*, L.?—Gore Bay. Only the leaves could be found.
107. *Rubus odoratus*, L.—Middle of St. Joseph Island.
108. " *triflorus*, Richards.—Hilton, Owen Sound.
109. " *strigosus*, Mich.—Owen Sound, Mississagui Island, Bruce Mines, Hilton, Cockburn and Drummond Islands.
110. " *occidentalis*, L.—Owen Sound.
111. " *villosus*, Ait.—Owen Sound, Mississagui Island, Bruce Mines, Hilton.
112. *Rosa Carolina*, L.—Whiskey Island.
113. " *lucida*, Ehrhart.—Cape Smyth.
114. " *blanda*, Ait.—Mississagui Island, Cape Smyth, Whiskey Island, centre of St. Joseph Island, Drummond and Cockburn Islands.
115. " *stricta*, Lindl.—Whiskey Island.
116. *Crataegus crus-galli*, L.—Whiskey Island.
117. *Pyrus arbutifolia*, L.—Border of the lake in the centre of St. Joseph Island, Thompson Point, Cockburn Island.
118. " *Americana*, DC.—Hilton, middle of St. Joseph Island, S.W. point of Cockburn Island.
119. *Amelanchier Canadensis*, Torrey & Gray.—Beside a lake in the middle of St. Joseph Island, S.W. point of Cockburn Island, Sidgrave Cove, Whiskey Island.

ONAGRACEÆ.

- ke in the
McLeod's
120. *Epilobium angustifolium*, L.—Very common and luxuriant throughout these islands, Owen Sound, Mississagui, Whiskey, Drummond and Cockburn Island, Bruce Mines. In the *brûlés* or burnt woods S. of Gore Bay this plant grew to the height of six or seven feet, and was so rank and in such quantities as to make walking exceedingly difficult.
121. " *coloratum*, Muhl.—Gore Bay, W. end of Drummond Island, Hilton, Cockburn Island, Bruce Mines, Sidgrave Cove.
122. *Oenothera biennis*, L.—Owen Sound, Cape Smyth, Whiskey and Mississagui Islands, Sidgrave Cove, S.W. point of Cockburn Island.
123. " *pumila*, L.—Mississagui Island.
124. *Ludwigia palustris*, Ell.—Owen Sound.
125. *Circa alpina*, L.—Owen Sound and Hilton.
126. *Myriophyllum spicatum*, L.—Sandy Bay.
127. *Hippuris vulgaris*, L.—Gore Bay, Vermont Harbour.

GROSULACEÆ.

- nd and
7. point,
Sidgrave
Whiskey
nds.
128. *Ribes Cynosbati*, L.—Owen Sound.
129. " *hirtellum*, Michaux.—Mississagui, Cockburn and Drummond Islands, Gore Bay.
130. " *lacustre*, Poir.—Owen Sound, middle of St. Joseph Island, S.W. point, and McLeod's Harbour, Cockburn Island, Gore Bay.
131. " *prostratum*, L'Her.—Owen Sound, Gore Bay.
132. " *floridum*, L.—Owen Sound, Gore Bay.
133. " *rubrum*, L.—Gore Bay, Hilton, Owen Sound.

SAXIFRAGACEÆ.

- nd, W.
134. *Mitella diphylla*, L.—Owen Sound.
135. " *nuda*, L.—Owen Sound, Hilton, Drummond Island.
136. *Tiarella cordifolia*, L.—Owen Sound.

UMBELLIFERÆ.

137. *Hydrocotyle Americana*, L.—Hilton.
 138. *Sanicula Marilandica*, L.—Owen Sound, Sidgrave Cove.
 139. *Heracleum lanatum*, Michx.—Mississagui Island.
 140. *Pastinaca sativa*, L.—E. end of St. Joseph Island, W. side of Drummond Island.
 141. *Cicuta maculata*, L.—Mississagui Island, S.W. part of Cockburn Island, Sidgrave Cove, Vermont Harbour.
 142. *Osmorrhiza longistylis*, DC.—Owen Sound.
 143. " *brevistylis*, DC.—Owen Sound, St. Joseph Island.

ARALIACEÆ,

144. *Aralia racemosa*, L.—Very rank in the middle of St. Joseph Island, Vermont Harbour.
 145. " *hispida*, Michx.—Mississagui Island, centre of St. Joseph Island, W. side of Cockburn Island.
 146. " *nudicaulis*, L.—Owen Sound, Hilton, S.W. corner of Cockburn Island, Sidgrave Cove, Vermont Harbour, Cape Smyth, Manitoulin Island, E. end.

CORNACEÆ.

147. *Cornus Canadensis*, L.—Owen Sound, Mississagui Island, Bruce Mines, Hilton, Gore Bay, Drummond and Cockburn Islands.
 148. " *circinata*, L'Her.—Hilton, W. side of Drummond and Cockburn Islands, Sidgrave Cove, Gore Bay.
 149. " *sericea*, L.—Small island at E. end of St. Joseph, McLeod's Harbour.
 150. " *stolonifera*, Michx.—Owen Sound, Whiskey and Mississagui Islands, W. sides of Drummond and Cockburn Islands, Sidgrave Cove, McLeod's Harbour, Thompson Point, Gore Bay.
 151. " *alternifolia*, L.—Gore Bay, Owen Sound.

CAPRIFOLIACEÆ.

152. *Linnæa borealis*, Gronov.—Mississagui Island, Bruce Mines, W. sides of Cockburn and Drummond Islands, interior of St. Joseph Island.
 153. *Symphoricarpus racemosus*, Michx.—Cape Smyth, cliffs on the E. side of Gore Bay, Cockburn Island.
 154. *Lonicera parviflora*, Lam.—Owen Sound, Mississagui Id., W. side Drummond and Cockburn Ids., McLeod's Hbr., Sidgrave Cove.
 155. " *hirsuta*, Eaton.—Sidgrave Cove, Owen Sound, Mississagui Id.
 156. " *ciliata*, Muhl.—Owen Sound, Little Cockburn Id., Hilton, Thompson Pt., McLeod's Hbr., and W. side Cockburn Id.
 157. " *oblongifolia*, Muhl.—Thompson Pt., Sidgrave Cove.
 158. *Diervilla trifida*, Moench.—Owen Sound, Cape Smyth, Mississagui Id., Bruce Mines, lake in centre of St. Joseph Id., McLeod's Hbr., and S.W. corner Cockburn, Sidgrave Cove.
 159. *Triosteum perfoliatum*, L.—Owen Sound.
 160. *Sambucus Canadensis*, L.—Owen Sound.
 161. " *pubens*, Mich.—Owen Sound, Hilton, and throughout St. Joseph Id., being very abundant in some parts of the interior.
 162. *Viburnum opulus*, L.—Gore Bay, Whiskey Id.

RUBIACEÆ.

163. *Galium triflorum*, Michx.—Owen Sound, Mississagui Id., Bruce Mines, interior St. Joseph Id.
 164. *Mitchella repens*, L.—Owen Sound.

DIPSACEÆ.

165. *Dipsacus sylvestris*, Mill.—Woodstock.

COMPOSITÆ.

166. *Eupatorium purpureum*, L.—Mississagui Id., interior and S. point St. Joseph Id., various places in Cockburn and Drummond Ids.
 167. " *perfoliatum*, L.—Owen Sound, Whiskey Id., Bruce Mines, border of Inke in interior St. Joseph Id., W. sides of Cockburn and Drummond Ids., McLeod's Hbr., Hay Pt., S. side St. Joseph Id.
 168. *Narpiosmia palmata*, Hook.—Drummond and Cockburn Ids.
 169. *Aster macrophyllus*, L.—Cape Smyth, interior St. Joseph Id., W. side Cockburn Id., Sidgrave Cove, Vermont Hbr.
 170. *Aster cordifolius*, L.—Hay Point, Sidgrave Cove.
 171. " *miser*, L. Ait.—Hay Point and interior St. Joseph Id., Vermont Hbr.
 172. " *simplex*, Willd.—Bruce Mines, Vermont Hbr.
 173. " *tenuifolius*, L.—Hay Point.
 174. " *puniceus*, L.—Hay Point, Bruce Mines, Whiskey Id.
 175. " *ptarmacoides*, Torr & Gr.—Cockburn Island.
 176. *Erigeron Canadense*, L.—Bruce Mines, Hilton, Sidgrave Cove, Gore Bay, Cockburn Id.
 177. " *Philadelphicum*, L.—Bruce Mines, Owen Sound, Hilton, Cockburn Id.
 178. " *annuum*, Pers.—Owen Sound.
 179. " *strigosum*, Muhl.—With last.
 180. *Solidago virgaurea*, L.—McLeod's Hbr.
 181. " *altissima*, L.—Bruce Mines.
 182. " *Canadensis*, L.—Bruce Mines, Vermont Hbr., Hay Point.
 183. " *gigantea*, Ait.—Whiskey Id.
 184. " *lanceolata*, L.—Bruce Mines, Vermont Hbr., Hay Point.
 185. " *Ohioensis*, Riddell.—Cockburn Id., W. side.
 186. *Inula Helenium*, L.—Owen Sound.
 187. *Rudbeckia hirta*, L.—Richardson's, St. Joseph Island.
 188. *Coreopsis lanceolata*, L.—Rocky shore, McLeod's Hbr.
 189. *Bidens chrysanthemoides*, Michx.—Gore Bay.
 190. " *Beckii*, Torr.—Vermont Harbour.
 191. *Marula cotula*, DC.—Bruce Mines.
 192. *Achillea mille-folium*, L.—William Id., Mississagui Id., Bruce Mines, W. side Cockburn Id., Sidgrave Cove, Var. *roseum*, Cockburn Id.
 193. *Artemisia Canadensis*, Michx.—Cockburn, Mississagui, and Whiskey Ids., Bruce Mines.
 194. *Gnaphalium polycephalum*, Michx.—Mississagui, Cockburn, and St. Joseph Ids., Bruce Mines, Owen Sound.
 195. *Senecio aureus*, L.—Richardson's, W. side Drummond Id., Var. *oblongifolius*, Cockburn Id.
 196. *Cirsium lanceolatum*, Scop.—Hilton.
 197. " *Pitcheri*, Torr & Gr.—S.W. corner of Cockburn Id., near Little Cockburn Id.

198. *Cirsium discolor*, Spreng.—Owen Sound.
 199. " *muticum*, Michx.—Hilton, small island S.E. of St. Joseph, Gore Bay.
 200. " *pumilum*, Spreng.—Drummond and Cockburn Ids.
 201. " *arvense*, Scop.—Hilton. Vars. *rubrum* and *album* growing close to the shore at Hilton, as if recently introduced.
 202. *Lappa major*, Gaertn.—Owen Sound, Bruce Mines.
 203. *Hieracium Canadense*, Michx.—Bruce Mines, W. side Cockburn Id.
 204. *Nabalus albus*, Hook.—Gore Bay.
 205. " *racemosus*, Hook.—Sandy Bay, Cockburn Id.
 206. *Taraxacum dens-leonix*, Desf.—Owen Sound, Bruce Mines.
 207. *Lactuca elongata*, Muhl.—Little Cockburn Id.
 208. *Mulgedium leucophæum*, DC.—Owen Sound, Bruce Mines.

LOBELIACEÆ.

209. *Lobelia carolinensis*, L.—Lobelia Lake, centre of Cockburn Id.; McLeod's Hbr.
 210. " *Kalmii*, L.—Mississagui Id., S.E. corner of St. Joseph Id., Sidgrave's Cove, McLeod's Hbr., and S.W. corner of Cockburn.

CAMPANULACEÆ.

211. *Campanula rotundifolia*, L.—Common on all the islands.
 212. " *aparinoides*, Pursh.—Bruce Mines, border of lake in middle of St. Joseph Id., Drummond Island, Gore Bay, Thompson's Point, McLeod's Hbr.

ERICACEÆ.

213. *Gaylussacia resinosa*, Torr & Gr.—Three miles N.W. of McLeod's Hbr.
 214. *Vaccinium oxycoccus*, L.—Cockburn Id.
 215. *Chimaphys hispidula*, Torr & Gr.—Drummond Id.
 216. *Arctostaphylos uva-ursi*, Spreng.—Whiskey Id., Mississagui Id., Cockburn Id., Mill-drum Bay, Grand Manitoulin Id.
 217. *Epigaea repens*, L.—Drummond Id., W. side; Thompson Point, McLeod's Hbr.
 218. *Gaultheria procumbens*, L.—Hilton.
 219. *Cassandra calyculata*, Don.—Near the small lake in the interior of St. Joseph Id.
 220. *Kalmia glauca*, Ait.—Drummond Id., Var. *rosmarinifolia*, Thompson Point.
 221. *Ledum latifolium*, Ait.—W. end Drummond Id., McLeod's Hbr.
 222. *Pyrola rotundifolia*, L.—McLeod's Hbr.
 223. " *elliptica*, Nutt.—Owen Sound, Hilton, Gore Bay.
 224. " *chlorantha*, Swartz.—Small island S.E. St. Joseph Id., corner Cockburn Id., McLeod's Hbr., Gore Bay.
 225. " *secunda*, L.—Owen Sound, Gore Bay, Hilton, Cockburn Id.
 226. *Moneses uniflora*, Gray.—Near S. side St. Joseph Id.
 227. *Chimaphila umbellata*, Nutt.—Mississagui Id., Hilton, Sidgrave Cove.
 228. *Pterospora Andromeda*, Nutt.—N.W. point Drummond Id., on the wooded top of a high cliff four miles S. of Gore Bay, Vermont Harbor, three miles N. of McLeod's Hbr. This plant grows in great quantities in many places through the islands.
 229. *Monotropa uniflora*, L.—Hilton, Thompson Point, Gore Bay, Hay Pt., S.W. point of Cockburn Id.
 230. " *hypopitys*, L.—Thompson Pt., Gore Bay.

AQUIFOLACEÆ.

231. *Ilex verticillata*, Gray.—Mississagui Id., beside the lake in centre St. Joseph Id., S. side of St. Joseph Id., Drummond Id. Thompson Point, McLeod's Hbr.

PLANTAGINACEÆ.

232. *Plantago major*, L.—Owen Sound, Gore Bay, Cockburn Id. In the interior of St. Joseph Id. I found several specimens of this plant with a small clasping leaflet half-way up the stalk of the spike, like that of a *Parnassia*.

PRIMULACEÆ.

233. *Primula farinosa*, L.—Whiskey Id., Mississagui, Drummond and Cockburn Isds.
 234. *Triontalix Americana*, Pursh.—Hilton, S. W. point of Cockburn Id.
 235. *Lysimachia stricta*, Ait.—Mississagui Id., border of lake, middle of St. Joseph Id.
 236. *Naumburgia thyrsiflora*, Reichenb.—W. point Drummond Id.

LENTIBULACEÆ.

237. *Utricularia vulgaris*, L.—Vermont Hbr., Sandy Bay.
 238. " *intermedia*, Hayne.—Growing on the muddy shore of a pond a mile W. of Huronia Pt., S. side of Cockburn Id.
 239. " *cornuta*, Michx.—Mississagui Id., small island S.E. of St. Joseph Id., Cockburn Id.

SCROPHULARIACEÆ.

240. *Verbascum Thapsus*, L.—Owen Sound, Bruce Mines, Hilton.
 241. *Mimulus ringens*, L.—Mississagui Id., Gore Bay, Owen Sound.
 242. *Veronica Virginica*, L.—Gore Bay.
 243. " *Americana*, Schwein.—Owen Sound, Hilton.
 244. " *scutellata*, L. Gore Bay.
 245. " *arvensis*, L.—Richardson's, S. side of St. Joseph Id.
 246. *Gerardia aspera*, Dougl.—Bay S. of Huronia Point.
 247. *Custileia coccinea*, Spreng.—Common in many places in Drummond and Cockburn Isds., and conspicuous along the shore from its intensely bright scarlet flowers.
 248. *Melampyrum Americanum*, Michx.—Drummond and Cockburn Isds.

VERBENACEÆ.

249. *Verbena hastata*, L.—Mississagui, St. Joseph and Cockburn Isds., Gore Bay.
 250. " *artificifolia*, L.—Between Owen Sound and Leith.
 251. *Phryma Lepostachya*, L.—On the S. side of the Pottawatamy River, Owen Sound.

LABIATÆ.

252. *Mentha Canadensis*, L.—Mississagui Id., Bruce Mines, Hilton, Sidgrave Cove, Vermont Htr., Little Cockburn Id.
 253. *Lycopus Europæus*, L.—Vars. *sinuatus* and *integrifolius*, Owen Sound, William, Drummond and Cockburn Isds.
 254. *Calamintha glabella*, Benth.—Var. *Nuttallii*, Gray. Common on the shores of Mississagui, Cockburn and Drummond Isds.
 255. " *clivopodium*, Benth.—Owen Sound, William (or Whiskey) Id., Wequema-kong Bay, E. end of Grand Manitoulin, W. end of Drummond Id. and Sidgrave Cove.
 256. *Monarda fistulosa*, L.—Owen Sound.
 257. *Nepeta Cataria*, L.—Owen Sound, interior St. Joseph Id.
 258. *Prunella vulgaris*, L.—Common in all the Manitoulin group of islands.
 259. *Scutellaria parvula*, Michx.—Whiskey Id., Wequema-kong Bay.

260. *Scutellaria galericulata*, L.—Whiskey Id., Mississagui Id., Bruce Mines, border of lake in the interior of St. Joseph Id.
 261. " *lateriflora*, L.—Cape Smyth, Bruce Mines, Mississagui and Cockburn Isds., Gore Bay.
 262. " *versicolor*, Nutt?—Owen Sound, Hilton, S.W. point Cockburn Id.
 263. *Galeopsis Tetrahit*, L.—Bruce Mines, Hilton.

BORRAGINACEÆ.

264. *Echinosperrum Lappula*, Lehm.—Owen Sound, Sidgrave Cove.
 265. *Cynoglossum officinale*, L.—Owen Sound, Bruce Mines, Hilton.
 266. " *Morrisoni*, DC.—Owen Sound, Cape Smyth, Whiskey Id., middle of St. Joseph Id., Sidgrave Cove.

HYDROPHYLLACEÆ.

267. *Hydrophyllum Virginicum*, L.—Owen Sound.
 268. " *Canadense*, L.—Owen Sound.

CONVOLVULACEÆ.

269. *Calystegia sepium*, R. Br.—McLeod's Harbour.

SOLANACEÆ.

270. *Solanum nigrum*, L.—Richardson's, St. Joseph Id., Vermont Hbr., N.W. corner Drummond Id.
 271. *Physalis viscosa*, L.—Gravelly bank S. W. corner Cockburn Id., Burnt Wood, Gore Bay.

GENTIANACEÆ.

272. *Halenia deflexa*, Griseb.—Mississagui and Drummond Isds.
 273. *Gentiana detonsa*, Fries.—Drummond and Cockburn Isds. Not uncommon on the shores.
 274. " *saponaria*, L., var. *linearis*, Gray.—Bruce Mines.
 275. *Menyanthes trifoliata*, L.—Marsh of Mississagui Id., S.W. corner of Drummond Id., Thompson Point.

APOCYNACEÆ.

276. *Apocynum androsæmifolium*, L.—Owen Sound, Sidgrave Cove.
 277. " *cannabinum*, L.—Whiskey Id.

ASCLEPIADACEÆ.

278. *Asclepias Cornuti* Decaisne.—Owen Sound.
 279. " *incarnata*, L.—Whiskey Id., Thompson Point.

OLEACEÆ.

280. *Fraxinus Americana*, L.—Owen Sound, W. side and interior of Cockburn Island, Thompson Pt., McLeod's Hbr.
 281. " *sambucifolia*, Lam.—H. Nottbier, Cockburn Id.

ARISTOLOCHIACEÆ.

282. *Asarum Canadense*, L.—Owen Sound.

CHENOPODIACEÆ.

283. *Chenopodium album*, L.—Richardson's, Vermont Hbr.
 284. *Blitum capitatum*, L.—Owen Sound, Little Current, interior of St. Joseph Id.

AMARANTACEÆ.

285. *Amaranthus paniculatus*, A.—Bruce Mines.

POLYGONACEÆ.

286. *Polygonum amphibium*, L.—Gore Bay, Vermont Harbour, Hay Point.
 287. " *Pennsylvanicum*, L.—Sidgrave Cove.
 288. " *persicaria*, L.—Mississagui Id., Hilton, Gore Bay.
 289. " *hydropiper*, L.—Mississagui, Cockburn Id.
 290. " *aviculare*, L.—Owen Sound, Bruce Mines.
 291. " *ramosissimum*, Michx.—Drummond Id., Little Cockburn Id., Hay Point.
 292. " *s. gillatum*, L.—Bruce Mines.
 293. *Rumex obtusifolius*, L.—Owen Sound, Bruce Mines, St. Joseph Id.
 284. " *crispus*, L.—Owen Sound, Bruce Mines, interior St. Joseph Id., Cockburn.
 295. " *hytrolapathum*, (Hudson), var. *Americanum*, Mississagui Id., Owen Sound, Bruce Mines, Vermont Harbour.
 296. " *acetosella*, L.—Mississagui Id., Bruce Mines, Hilton.

THYMELEACEÆ.

297. *Dirca palustris*, L.—Interior Cockburn Id., small Isd. off S.E. point St. Joseph.

ELÆAGNACEÆ.

298. *Shepherdia Canadensis*, Nutt.—Owen Sound, and common throughout these Islands.

SANTALACEÆ.

299. *Comandra umbellata*, Nutt.—Whiskey and Mississagui Isds., Sidgrave Cove, S.W. Pt. Cockburn.

CALLITRICHACEÆ.

300. *Callitriche verna*, L.—Gore Bay.

URTICACEÆ.

301. *Ulmus fulva*, Michx.—Owen Sound, interior St. Joseph Id.
 302. " *Americana*, L.—Sidgrave Cove, Gore Bay.
 303. *Urtica gracilis*, Ait.—Owen Sound, Hilton.
 304. *Laportea Canadensis*, Gaudich.—Owen Sound.

CORYLACEÆ.

305. *Quercus rubra*, L.—St. Joseph and Cockburn Ids.
 306. *Fagus ferruginea*, Ait.—Hilton village and throughout St. Joseph Id., interior Cockburn Id., Gore Bay, Vermont Harbour.
 307. *Corylus rostrata*, Ait.—Hilton, Cockburn Island,
 308. *Ostrya Virginica*, Willd.—Hilton, interior Cockburn Id.

MYRICACEÆ.

309. *Myrica Gale*, L.—Mississagui, Drummond, Cockburn and St. Joseph Islands, Bruce Mines.

BETULACEÆ.

310. *Betula papyracea*, Ait.—Mississagui Id., Sidgrave Cove, Thompson Pt., Gore Bay S.W. Pt. and interior of Cockburn Id.
 311. " *excelsa*, Ait.—Owen Sound, interior of St. Joseph and Cockburn Ids.
 312. " *lenta*, L.—Hilton, Gore Bay.

313. *Alnus incana*, Willd.—Bruce Mines, Mississagui Id., Border of Lake St. Joseph Id., McLeod's Hbr. and S.W. Pt. Cockburn.

SALICACEÆ.

314. *Salix camilla*, Willd.—Common marshy grounds, St. Joseph, Cockburn and Drummond Isds.
 315. " *cordata*, Muhl.—Sand reaches, S. side Cockburn Id.
 316. " *pedicellaris*, Pursh.—Sand Bay.
 317. *Populus tremuloides*, Michx.—Gore Bay, Mississagui Id., Mildrum Bay, St. Joseph Id., Sidgrave Cove, Vermont Hbr.
 318. " *grandidentata*, Michx.—Gore Bay, St. Joseph, Cockburn and Drummond Id.
 319. " *balsamifera*, L.—Same localities as last.

CONIFERÆ.

320. *Pinus resinosa*, Ait.—Common throughout Cockburn Id., Sidgrave Cove, Drummond Id., Gore Bay.
 321. " *strobus*, L.—Mississagui, St. Joseph, Drummond, Cockburn Isds., Gore Bay.
 322. *Abies balsamea*, Marshall.—Mississagui Id., and on all the Manitoulin group.
 323. " *Canadensis*, Michx.—St. Joseph Id., some trees three feet in diameter, Cockburn Id., Gore Bay.
 324. " *nigra*, Poir.—Cockburn Id.
 325. " *alba*, Mich.—Interior St. Joseph Id., northern part Cockburn Id., Gore Bay, Whiskey Id.
 326. *Larix Americana*, Michx.—Bruce Mines, S. end St. Joseph Id., Cockburn Id., McLeod Hbr., Vermont Hbr., Mildrum Bay.
 327. *Thuja occidentalis*, L.—Common from the Grand Manitoulin Id. to Bruce Mines.
 328. *Juniperus communis*, L.—Drummond Id., S. W. point and McLeod's Hbr., Cockburn Id.
 329. " *Virginiana*, L. Var. *humilis*,—W. sides Drummond and Cockburn Isds.
 330. *Taxus baccata*, L., Var. *Canadensis*, Gray.—Owen Sound, Mississagui Id., Hilton, Little Cockburn Id., Gore Bay, Vermont Hbr.

ARACEÆ.

331. *Arisema triphyllum*, Torr.—Owen Sound, St. Joseph Id.
 332. *Calla palustris*, L.—Hilton.
 333. *Acorus calamus*, L.—Gore Bay, Vermont Harbor.

TYPHACEÆ.

334. *Typha latifolia*, L.—Mississagui Id., S. end St. Joseph, Gore Bay.
 335. *Sparganium ramosum*, Hudson.—Head of Gore Bay.
 336. " *natans*, L., Var. *affine*, Fries.—Vermont Harbor.

NAIADACEÆ.

337. *Potamogeton pectinatus*, L.—Sandy Bay, N. side Cockburn Id.
 338. " *Robbinsii*, Oakes.—Same place as last.
 339. " *pusillus*, L.—With the above in a small sheltered nook of Sandy Bay.
 340. " *pauciflorus*, Pursh.—Gore Bay.
 341. " *compressus*, L.—Hay Point.
 342. " *perfoliatus*, L.—Sandy Bay.
 343. " *lucens*, Var. *fluitans*, Roth.—Gore Bay.
 344. " *heterophyllus*, Schreber.—Sandy Bay.

ALISMACEÆ.

345. *Triglochin maritimum*, L.—Drummond Id., McLeod's Hbr., Cockburn Id.
 346. *Alisma Plantago*, L.—Owen Sound.
 347. *Sagittaria variabilis*, Engelman, Vars. *gracilis*, *obtusa*, etc.—Owen Sound, Gore Bay, Little Cockburn Id.
 348. " *calycina*, Engelm.—Growing at the entrance of a small creek at Gore Bay.

HYDROCHARIDACEÆ.

349. *Anacharis Canadensis*, Planchon.—Sandy Bay.
 350. *Valisneria spiralis*, L.—Gore Bay, Vermont Hbr.

ORCHIDACEÆ.

351. *Platanthera obtusata*, Lindl.—St. Joseph and Drummond Ids.
 352. " *orbiculata*, Lindl.—Hilton, Drummond Id., Cockburn Id.
 353. " *hyperborca*, Lindl.—Lake interior St. Joseph Id., S.W. side Drummond Id., Thompson Pt., McLeod Hbr.
 354. " *dilatata*, Lindl.—Drummond Id., W. side Thompson Pt.
 355. " *psychodes*, Gray.—Owen Sound, Drummond Id., Thompson Pt., McLeod Hbr.
 356. *Goodyera repens*, R. Br.—Sidgrave Cove, Thompson Pt., Gore Bay.
 357. " *pubescens*, R. Br.—interior St. Joseph Id., Thompson Point, Gore Bay.
 358. *Spiranthes cernua*, Richard.—Drummond Id., McLeod's Hbr.
 359. *Listera convallarioides*, Hook.—Hilton, W. side Cockburn Id.
 360. *Corallorhiza multiflora*, Nutt.—Owen Sound, Cockburn Id.
 361. *Cypripedium pubescens*, Willd.—Cockburn Id.
 362. " *spectabile*, Swartz.—Thompson Pt.

IRIDACEÆ.

363. *Iris versicolor*, L.—Owen Sound, Mississagui Id., Bruce Mines, Cockburn Id.
 364. *Sisyrinchium Bermudiana*, L.—Bruce Mines, Cockburn Id.

SMILACEÆ.

365. *Trillium cernuum*, L.—Interior St. Joseph Id., Gore Bay.
 366. " *erectum*, L.—St. Joseph Id.
 367. *Medeola Virginica*, L.—Owen Sound, Hilton.

LILIACEÆ.

368. *Polygonatum biflorum*, Ell.—Hilton.
 369. *Smilacina racemosa*, Desf.—Owen Sound, Hilton, Gore Bay, McLeod Hbr.
 370. " *stellata*, Desf.—Mississagui Id., West side and Sidgrave Cove, Drummond Id., Cockburn Id.
 371. " *trifolia*, Desf.—Bruce Mines, Hilton, Thompson Pt., Gore Bay, McLeod Harbor.
 372. " *bifolia*, Ker.—Mississagui Id., Cockburn Id.
 373. *Clintonia borealis*, Raf.—Owen Sound, Mississagui and Cockburn Ids., Hilton.
 374. *Allium tricoccum*, Ait.—Owen Sound.
 375. *Lilium Philadelphicum*, L.—West side of Cockburn Id., McLeod's Hbr.

MELANTHACEÆ.

376. *Sisyrinchium amplexifolium*, D. C.—Hilton.
 377. " *roseus*, Michx.—Owen Sound, Hilton.
 378. *Zygadenus glaucus*, Nutt.—Island Hbr., Drummond Id., Cockburn Id.

379. *Tofieldia glutinosa*, Willd.—Fairview Harbor, Drummond Id., Thompson Pt., McLeod's Hbr.

PONTEDERIACEÆ.

380. *Poutederia cordata*, L.—Small S. E. corner St. Joseph Isd., Vermont Harbor.

ERIOCAULONACEÆ.

381. *Eriocaulon septangulare*, Withering.—Hay Point, S. side St. Joseph Isd. Very abundant.

CYPERACEÆ.

382. *Scirpus acicularis*, L.—Gore Bay.
 383. " *caspiolus*, L.—Thompson Pt.
 384. " *pungens*, Vahl.—Hay Point.
 385. *Eriophorum polystachyon*, L.—Mississaugui Id.
 386. " *gracile*, Koch.—Thompson Pt.
 388. *Carex aurea*, Nutt.—Whiskey Id.

GRAMINEÆ.

388. *Zizania aquatica*, L.—Vermont Hbr.
 389. *Panicum capillare*, L.—McLeod Hbr.

EQUISETACEÆ.

890. *Equisetum sylvaticum*, L.—S. W. side St. Joseph's Id, Gore Bay.
 391. " *limosum*, L.—Owen Sound, Gore Bay, Hay Pt.
 392. " *hyemale*, L.—Owen Sound, Gore Bay.
 393. " *variegatum*, Schleicher.—Drummond Id., Cockburn Id., Gore Bay.
 394. " *scirpoides*, Michx.—Hilton, Gore Bay, Drummond Id.

FILICES.

395. *Polypodium vulgare*, L.—Owen Sound, McLeod Hbr.
 396. " *Phegopteris*, L.—Hilton.
 397. " *Dryopteris*, L.—Owen Sound, Hilton.
 398. *Struthiopteris Germanica*, Willd.—Owen Sound, Hilton, Gore Bay.
 399. *Allosorus gracilis*, Presl.—McLeod Hbr.
 400. *Pteris aquilina*, L.—Common from Owen Sound to the Bruce Mines.
 401. *Adiantum pedatum*, L.—Owen Sound.
 402. *Campylosorus rizophyllus*, Link.—Owen Sound.
 403. *Scolopendrium officinarum*, Swartz.—Growing in rich soil among loose rocks, at the foot of a limestone escarpment, a short distance S.W. of Owen Sound.
 404. *Asplenium Trichomanes*, L.—Owen Sound, McLeod Hbr.
 405. " *viride*, Hudson.—Owen Sound. Growing among the moss on the sides of cool moist clefts or gorges in the limestone escarpment mentioned above.
 406. " *thelypteroides*, Michx.—Interior St. Joseph Id.
 407. " *Filix-fœmina*, R. Br.—Whiskey Id., St. Joseph Id., Sandy Bay, Gore Bay.
 408. *Cystopteris bulbifera*, Bernh.—Common from Owen Sound to St. Joseph Id.
 409. " *fragilis*, Bernh.—Owen Sound, Gore Bay, McLeod Hbr.
 410. *Aspidium Noveboracense*, L. Willd.—Gore Bay.
 411. " *spinulosum*, Swartz.—Owen Sound, Hilton.

- l., Thompson Pt.,
 mont Harbor.
 Joseph Id. Very
412. *Aspidium cristotum*, Swartz.—Owen Sound.
 413. " *marginale*, Swartz.—Owen Sound.
 414. " *acrostichoides*, Swartz.—Owen Sound.
 415. " *Loucheilis*, Spreng.—With *Scolopendrium officinarum*.—Owen Sound.
 416. *Oenoclea sensibilis*, L.—Owen Sound, Gore Bay, Hilton.
 417. *Osmunda regalis*, L.—Border of Lake St. Joseph Id, Gore Bay, Thompson Pt., McLeod Hbr.
 418. " *Claytoniana*, L., (*O. interrupta* Michx).—Hilton, St. Joseph's Id.
 419. " *cinnamomea*, L.—Owen Sound.
 420. *Botrychium lunarioides*, Swartz.—Owen Sound.
 421. " *Virginicum*, Swartz.—Mississagui Id., St. Joseph and Cockburn Isds., Gore Bay.
 422. " *simplex*, Gray.—Small Isd. E. end St. Joseph.

LYCOPODIACEÆ.

423. *Lycopodium lacitulum*, Michx.—Richardson's, S. side St. Joseph Id.
 424. " *annotinum*, L.—Same locality as last.
 425. " *dendroideum*, Michx.—Same place.
 426. " *clavatum*, L.—With the last and on Cockburn Id.
 427. *Selaginella selaginoides*, Gray.—Fairview Cove, Drummond Id.
 428. " *apus*, Spreng.—Whiskey Isd., small Isd. E. end St. Joseph, Drummond Id. and Cockburn Isds.

MUSCI.

- l., Gore Bay.
429. *Climacium Americanum*, Bird.—St. Joseph Id.
 430. *Hypnum splendens*, Hedw.—Drummond Id.
 431. " *triquetrum*, L.—Island Hbr., Drummond Id.
 432. *Leucobryum glaucum*, Hampe.—Drummond Id.

JUNGERMANNIACEÆ.

433. *Marchantia polymorpha*, L.—Owen Sound.

LICHENES.

- ay.
 ines.
434. *Cladonia rangiferina*,
 435. *Cetraria Islandica*,
 436. *Usnea barbata*,
 437. " *jubata*,
- } Island Harbor, Drummond Id.

CHARACEÆ.

438. *Chara vulgaris*, L.—Gore Bay.

g loose rocks, at the
 short distance S.W.

moss on the sides
 of the limestone escarp-

Sandy Bay, Gore

Joseph Id.

or.

In the above list the initial letters and contractions after the names of the different plants, indicate the authors of the species. L. = Linnæus, DC. = DeCandolle, Poir. = Poirêt, Salisb. = Salisbury, Ait. = Aiton, Raf. = Rafinesque, Willd. = Willdenow, R. Br. = Robert Brown, Scop. = Scopoli, Nutt. = Nuttall, Torr. = Torrey, Gr. = Gray, Michx. = Michaux, Muhl. = Muhlenberg, L'Her. = L'Heritier, Lamb. = Lambert, Walt. = Walter, Gmel. = Gmelin, Ehrh. = Ehrhart, Lindl. = Lindley, Ell. = Elliott, Gronov. = Gronovius, Mill. = Miller, Hook. = Hocker, Pers. = Persoon, Spreng. = Sprengel, Benth. = Bentham, Griseb. = Grisebach, Desf. = Desfontaines, Wahl. = Wahlenberg, Bern. = Bernhardt, Hedw. = Hedwig, etc.

Montreal General Hospital,
 August, 1867.

COMMON AMERICAN NAMES OF THE PRECEDING PLANTS.

1. Virgin's bower.
2. Many-cleft anemone.
3. Tall anemone.
4. Pennsylvanian anemone.
5. Round-lobed hepatica.
6. Sharp-lobed "
7. Meadow rue.
8. White water-crowfoot.
9. Spear wort.
10. Cursed crowfoot
11. Hooked "
12. Bristly "
13. Creeping "
14. Buttercup.
15. Marsh marigold.
16. Three-leaved goldthread.
17. Wild columbine.
18. Red bane-berry.
19. Sweet-scented water-lily.
20. Yellow pond-lily
21. Fitcher plant.
22. Blood-root.
23. Climbing fumitory.
24. Golden corydalis.
25. Pale corydalis.
26. Water-cress.
27. Marsh-cress.
28. Toothwort, pepper-root.
29. Cuckoo-flower.
30. Common bitter-cress.
31. Rock-cress
32. Long-podded tower mustard.
33. Straight tower mustard.
34. Winter-cress, yellow-rocket.
35. Hedge mustard.
36. Fanny mustard.
37. Wild pepper-grass.
38. Shepherd's-purse.
39. American sea-rocket.
40. Sweet white violet.
41. Selkirk's violet.
42. Common blue violet.
43. Long-spurred violet.
44. American dog-violet.
45. Canada violet.
46. Downy yellow violet.
47. Round-leaved sundew.
48. Narrow-leaved sundew.
49. Common grass of Parnassus.
50. Larger grass of Parnassus.
51. Small flowered St. John's-wort.
52. Kahn's St. John's-wort.
53. Marsh St. John's-wort.
54. Sleepy catch fly.
55. Night-flowering catch-fly.
56. Corn-cockle.
57. Sandwort.
58. Thyme-leaved sandwort.
59. Stitchwort.
60. Northern chickweed.
61. Larger mouse-ear chickweed.
62. Field chickweed.
63. Basswood, Linden.
64. Wood-sorrel.
65. Sheep-sorrel.
66. Herb Robert.
67. Spotted touch-me-not.
68. Staghorn sumach.
69. Poison Ivy, poi-on oak.
70. Fragrant sumach.
71. Buckthorn.
72. Oval leaved New Jersey tea.
73. Wax-work, climbing bitter-sweet.
74. Striped maple.
75. Mountain maple.
76. Sugar maple.
77. Red or swamp maple.
78. Seneca snake-root.
79. Rosy milk-wort.
80. Flowering wintergreen.
81. Red clover.
82. White clover.
83. Milk vetch.
84. Cooper's vetch.
85. Beach pea.
86. Marsh vetchling.
87. Myrtle-leaved vetchling.
88. Hog pea-unt.
89. Wild yellow plum, red plum.
90. Sand cherry.
91. Wild red cherry.
92. Choke cherry.
93. Nino bark.
94. Common meadow-sweet.
95. Common agrimony.
96. Avens.
97. Straight yellow avens.
98. Water or purple avens.
99. Harren strawberry.
100. Cinquefoil.
101. Silver-weed.
102. Shrubby cinquefoil.
103. Marsh five-fingers.
104. Strawberry.
105. Long stalked strawberry.
106. Dalibarda.
107. Purple flowering raspberry.
108. Dwarf raspberry.
109. Wild red raspberry.
110. Black raspberry, thimbleberry.
111. Common or high blackberry.
112. Swamp rose.
113. Dwarf wild rose.
114. Early wild rose.
115. Wild rose.
116. Cock-pur thorn.
117. Choke-berry.
118. American mountain ash.
119. June berry, shad-bush, service-berry.
120. Great willow-herb.
121. Common small willow-herb.
122. Common evening primrose.
123. Small evening primrose.
124. Water purslane.

125. Nightshade.
 126. Milfoil.
 127. Mares-tail.
 128. Wild gooseberry.
 129. Smooth wild gooseberry.
 130. Swamp gooseberry.
 131. Field currant.
 132. Wild black currant.
 133. Red currant.
 134. Mitre-wort, bishop's cap.
 135. Little round-leaved ground ivy.
 136. False mitre-wort.
 137. Marsh penny-wort.
 138. Sanicle, black snake-root.
 139. Cow parsnip.
 140. Common parsnip.
 141. Spotted cowbane, musquash-root.
 142. Smoother sweet cicely.
 143. Hairy sweet cicely.
 144. Spikenard.
 145. Britly sarsaparilla, wild elder.
 146. Wild sarsaparilla.
 147. Dwarf cornel, bunch-berry.
 148. Round-leaved cornel.
 149. Silky cornel, kennikonuk.
 150. Red-osier dogwood.
 151. Alternate leaved-cornel.
 152. Twinflower.
 153. Snowberry.
 154. Small honeysuckle.
 155. Hairy honeysuckle.
 156. Fly honeysuckle.
 157. Swamp fly-honeysuckle.
 158. Bush honeysuckle.
 159. Fever-wort.
 160. Common elder.
 161. Red-berried elder.
 162. Cranberry-tree.
 163. Sweet-scented bedstraw.
 164. Partridge-berry.
 165. Wild teasel.
 166. Joe-pye weed, trumpet weed.
 167. Thoroughwort, bone-set.
 168. Sweet colts-foot.
 169. Large-leaved aster.
 170. Heart-leaved aster.
 171. Dwarf aster.
 172. Simple aster.
 173. Thin-leaved aster.
 174. Showy marsh aster.
 175. Sneezewort aster.
 176. Horse-weed, butter-weed.
 177. Fleabane.
 178. Daisy fleabane, sweet scabious.
 179. Daisy fleabane.
 180. Golden-rod.
 181. "
 182. "
 183. "
 184. "
 185. "
 186. Elecampane.
 187. Cone-flower.
 188. Coreopsis.
 189. Bur marigold.
 190. Water marigold.
 191. Common may-weed.
 192. Yarrow milfoil.
 193. Canada wormwood.
 194. Common everlasting.
 195. Golden ragwort, squaw-weed.
 196. Common thistle.
 197. Pitcher's woolly thistle.
 198. Cope thistle.
 199. Swamp thistle.
 200. Pasture thistle.
 201. Canada thistle.
 202. Burdock.
 203. Canada hawkweed.
 204. White lettuce.
 205. Hawk-weed, rattlesnake root.
 206. Dandelion.
 207. Wild lettuce.
 208. False blue lettuce.
 209. Cardinal flower.
 210. Kalm's lobelia.
 211. Harebell.
 212. Marsh bellflower.
 213. Black huckle-berry.
 214. Small cranberry.
 215. Creeping snowberry.
 216. Bearberry.
 217. Trailing arbutus, ground laurel.
 218. Aromatic wintergreen.
 219. Leather-leaf.
 220. Swamp laurel.
 221. Labrador tea.
 222. Round-leaved pyrola.
 223. Shin-leaf.
 224. Small pyrola.
 225. One-sided pyrola.
 226. One-flowered pyrola.
 227. Prince's pine, pipsissewa.
 228. Pine-drops.
 229. Indian pine.
 230. Pine-sap, false beech drops.
 231. Black alder winterberry.
 232. Common platanus.
 233. Bird's eye primrose.
 234. Chick wintergreen.
 235. Loosestrife.
 236. Tufted loosestrife.
 237. Great bladderwort.
 238. Intermediate bladderwort.
 239. Horned bladderwort.
 240. Common mullein.
 241. Monkey flower.
 242. Culver's-root, culver's physic.
 243. American brooklime.
 244. Marsh speedwell.
 245. Corn speedwell.
 246. Rough gerardia.
 247. Scarlet painted-cup.
 248. Cow-wheat.
 249. Blue vervain.
 250. Nettle-leaved or white vervain.
 251. Lopseed.
 252. Wild mint.
 253. Water horehound.

254. Calamint.
 255. Basil.
 256. Wild bergamot.
 257. Cat-mint, catnip.
 258. Heal-all, self-heal.
 259. Skullcap.
 260. Common skullcap.
 261. Mad-dog skullcap.
 262. Skullcap.
 263. Hemp-nettle.
 264. Stuck-seed.
 265. Hound's-tongue.
 266. Beggar's lice.
 267. Waterleaf.
 268. Canadian water-leaf.
 269. Hedge bindweed.
 270. Common nightshade.
 271. Ground cherry.
 272. Spurred gentian.
 273. Smaller fringed gentian.
 274. Soapwort gentian.
 275. Buckbean.
 276. Spreading dogbane.
 277. Indian hemp.
 278. Milkweed.
 279. Swamp milkweed.
 280. White ash.
 281. Black ash, water ash.
 282. Wild ginger.
 283. Lamb's quarters, pigweed.
 284. Strawberry bilite.
 285. Prince's feather.
 286. Water persicaria.
 287. Penn-sylvanian persicaria.
 288. Lady's thumb.
 289. Smartweed.
 290. Knotgrass, goose-grass.
 291. Branching joint-weed.
 292. Arrow-leaved tear-thumb.
 293. Bitter dock.
 294. Curled dock.
 295. Great water-dock.
 296. Field or horse-sorrel.
 297. Leatherwood, mousewood.
 298. Shepherdia.
 299. Bastard toadflax.
 300. Vernal water star-wort.
 301. Slippery or red elm.
 302. American or white elm.
 303. Tall wild nettle.
 304. Wood nettle.
 305. Red oak.
 306. American beech.
 307. Beaked hazelnut.
 308. Hop hornbean, lever-wood, iron-wood.
 309. Sweet gale.
 310. Paper birch, canoe birch.
 311. Yellow birch.
 312. Cherry birch, sweet or black birch.
 313. Speckled or hoary alder.
 314. Willow.
 315. Three-leaved willow.
 316. Four-leaved willow.
 317. American aspen.
 318. Large-toothed aspen.
 319. Balsam poplar, tecomahac, balm-of-gilead poplar.
 320. Red pine.
 321. White pine.
 322. Balsam fir.
 323. Hemlock spruce.
 324. Black or double spruce.
 325. White or single spruce.
 326. Tamarack, American or black larch, hackmatack.
 327. Arbor vita, white cedar.
 328. Juniper.
 329. Red cedar, savin.
 330. American yew, ground hemlock.
 331. Indian turnip.
 332. Water arum.
 333. Sweet flag, enlasmus.
 334. Cat-tail flag.
 335. Branching bur-reed.
 336. Floating bur-reed.
 337. Comb pondweed.
 338. Robbin's pondweed.
 339. Slender pondweed.
 340. Few-flowered pondweed.
 341. Flat pondweed.
 342. Shield-leaf pondweed.
 343. Shining-leaved pondweed.
 344. Clayton's pondweed.
 345. Arrowgrass.
 346. Water plantain.
 347. Variable arrow-head.
 348. Small northern arrow-head.
 349. Waterweed.
 350. Tape grass, eel grass.
 351. Dwarf orchis.
 352. Large round-leaved orchis.
 353. Northern green orchis.
 354. Northern white orchis.
 355. Small purple-fringed orchis.
 356. Rattlesnake plantain.
 357. " "
 358. Ladies' tresses.
 359. Northern tway-blade.
 360. Coral-root.
 361. Large yellow lady's slipper.
 362. Small yellow lady's slipper.
 363. Large blue flag.
 364. Blue-eyed grass.
 365. Nodding trillium, wake robin.
 366. Purple trillium, birth-root.
 367. Indian cucumber-root.
 368. Smaller Solomon's seal.
 369. False spikenard.
 370. Star lily.
 371. Three-leaved smilacina.
 372. Two-leaved smilacina.
 373. Northern Clintonia.
 374. Wild leek.
 375. Wild orange lily.
 376. Smooth green twisted stalk.
 377. Ro-y flowered twisted stalk.
 378. Zygadene.
 379. False asphodel.
 380. Plover-weed.
 381. Pipewort.

382. Bulrush.
 383. "
 384. "
 385. Many-stemmed cotton-grass.
 386. Graceful cotton-grass.
 387. Cane, sedge.
 388. Indian rice, water-oats.
 389. Panic-grass.
 390. Wood horsetail.
 391. Swamp horsetail.
 392. Shave-grass, scouring rush.
 393. Variegated scouring rush.
 394. Small wood rush.
 395. Common polypody.
 396. Marsh polypody.
 397. Woodland polypody.
 398. Ostrich fern.
 399. Rock brake.
 400. Common brake.
 401. Maiden-hair.
 402. Walking-leaf fern.
 403. Hart's tongue.
 404. Spleenwort.
 405. Green spleenwort.
 406. Silvery spleenwort.
 407. Spleenwort.
 408. Bladder fern.
 409. Variable bladder fern.
 410. Wood-fern, shield-fern.
411. Wood-fern, shield-fern.
 412. "
 413. "
 414. Wood-fern, "
 415. "
 416. Sensitive fern.
 417. Flowering fern.
 418. Interrupted flowering-fern.
 419. Cinnamon fern.
 420. Moonwort.
 421. Virginian moon-wort.
 422. Simple leaved moon-wort.
 423. Shining club moss.
 424. Club-moss.
 425. Ground pine.
 426. Common club-moss.
 427. Club-moss *selaginella*.
 428. Mossy "
 429. Moss.
 430. "
 431. "
 432. "
 433. Liver-wort.
 434. Reindeer moss.
 435. Iceland moss.
 436. Lichen.
 437. "
 438. Common chara.

