

**CIHM
Microfiche
Series
(Monographs)**

**ICMH
Collection de
microfiches
(monographies)**



Canadian Institute for Historical Microreproductions / Institut canadien de microreproductions historiques

© 1997

The copy filmed here has been reproduced thanks to the generosity of:

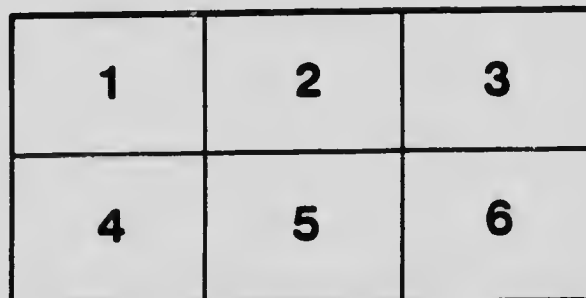
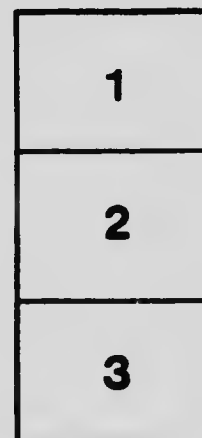
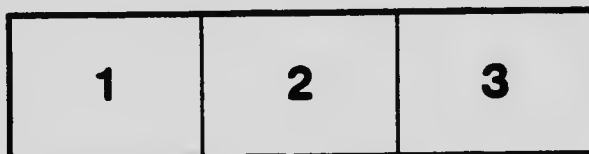
Vancouver City Archives

The images appearing here are the best quality possible considering the condition and legibility of the original copy and in keeping with the filming contract specifications.

Original copies in printed paper covers are filmed beginning with the front cover and ending on the last page with a printed or illustrated impression, or the back cover when appropriate. All other original copies are filmed beginning on the first page with a printed or illustrated impression, and ending on the last page with a printed or illustrated impression.

The last recorded frame on each microfiche shall contain the symbol \rightarrow (meaning "CONTINUED"), or the symbol ∇ (meaning "END"), whichever applies.

Maps, plates, charts, etc., may be filmed at different reduction ratios. Those too large to be entirely included in one exposure are filmed beginning in the upper left hand corner, left to right and top to bottom, as many frames as required. The following diagrams illustrate the method:



L'exemplaire filmé fut reproduit grâce à la générosité de:

Vancouver City Archives

Les images suivantes ont été reproduites avec le plus grand soin, compte tenu de la condition et de la netteté de l'exemplaire filmé, et en conformité avec les conditions du contrat de filmage.

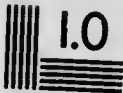
Les exemplaires originaux dont la couverture en papier est imprimée sont filmés en commençant par le premier plat et en terminant soit par la dernière page qui comporte une empreinte d'impression ou d'illustration, soit par le second plat, selon le cas. Tous les autres exemplaires originaux sont filmés en commençant par la première page qui comporte une empreinte d'impression ou d'illustration et en terminant par la dernière page qui comporte une telle empreinte.

Un des symboles suivants apparaîtra sur la dernière image de chaque microfiche, selon le cas: le symbole \rightarrow signifie "A SUIVRE", le symbole ∇ signifie "FIN".

Les cartes, planches, tableaux, etc., peuvent être filmés à des taux de réduction différents. Lorsque le document est trop grand pour être reproduit en un seul cliché, il est filmé à partir de l'angle supérieur gauche, de gauche à droite, et de haut en bas, en prenant le nombre d'images nécessaire. Les diagrammes suivants illustrent la méthode.

MICROCOPY RESOLUTION TEST CHART

(ANSI and ISO TEST CHART No. 2)



APPLIED IMAGE Inc

1653 East Main Street
Rochester, New York 14609 USA
(716) 482 - 0300 - Phone
(716) 288 - 5989 - Fax

VANCOUVER

EEEE
EEEE
EEEE

EEEE

EEEE

HOME

II II II II
II II II II
II II II II
II II II II

EEEE
EEEE
EEEE
EEEE
EEEE
EEEE
EEEE
EEEE
EEEE
EEEE

INDUSTRIES

Vancouver

To the Public,

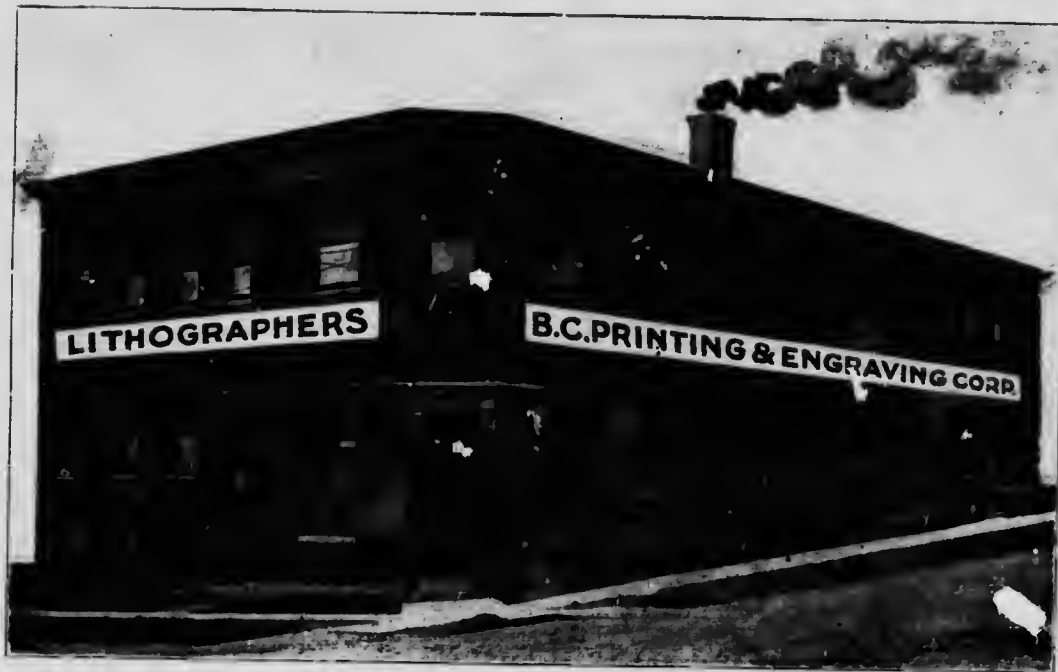
The continued prosperity of every city depends on the success and growth of its local industries, and it is therefore with a great deal of pleasure that we present you with this booklet which records the rise, rapid growth and present healthy condition of the most promising of Vancouver's Home Industries.

Our object in publishing this souvenir is two-fold—Firstly, to invite your co-operation in our efforts to lay securely the foundation of our City's future prosperity by patronizing and encouraging her industries, and Secondly, to show you, if you are not already one of her citizens, the splendid opportunities she offers and how promptly and amply she repays those with sufficient enterprise and initiative to establish industries within her walls.

Yours for Vancouver's Industrial Growth,

ROSS AND HOWARD IRON WORKS

THE B. C. PRINTING AND ENGRAVING CORPORATION, LIMITED



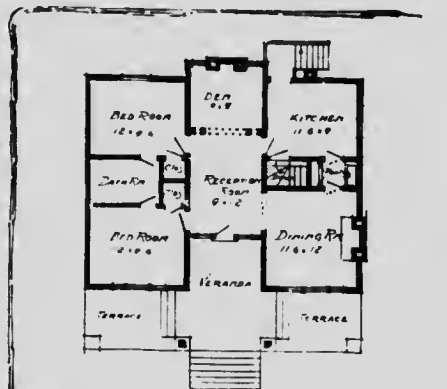
This firm of Lithographers started business away back in the 90's in the old Province Building, Hasting St. since when it has passed through various vicissitudes, until three years ago it settled down in its present home, corner Smythe and Homer Streets with increased plant and facilities. Notwithstanding the fact that the present premises with an area of 12,000 sq. ft. of floor space were at that time considered fully adequate for future expansion, the business has now entirely outgrown them and large additions to both building and plant are to be made during the next few months.

In the Label Department alone the business has increased in the last decade from an output of ten millions to over fifty millions. The majority of the Stock Certificate Bonds and Debentures issued in British Columbia have been turned out by this concern, a hanger in seven colors for the Vancouver Horse Show is amongst their more recent productions and is a splendid specimen of the Lithographic art. A staff of over 40 will be considerably augmented on completion of building extension.

VANCOUVER FREE HOMES LIMITED

One of the most insistent demands in Vancouver to-day is for Homes—Real Homes—for her people, but building is an expensive matter, and mostly, few comers have large sums of ready cash, at the same time western taste demands the highest degree of beauty both of design and workmanship in our homes and will not accept anything less, therefore, some system of easy payments is necessary to enable these people to become owners instead of tenants.

This demand has been met in the "Vancouver" way, that is promptly, amply, effectually, by the establishment of the



A BUNGALOW BY
VANCOUVER FREE HOMES LIMITED
612 HASTINGS ST W
VANCOUVER BC
I. H. BARRORTH ARCHT



Vancouver Free Homes Ltd, 612 Hastings Street, W. based on the small payment principal, whose architects provide a new design for each new home thus enabling the wage earner to have what has hitherto been considered the exclusive privilege of the rich—A home built to his own design—of which homes the illustration on this page is a fair example.

The Individual builder must give place to the building company. The small man has had his day and made good. Competition and organization are driving him to the wall. He cannot compete with organized capital.

W. J. McMASTER AND SONS LIMITED

The well known "BUCK" brand overalls and shirts are manufactured in Vancouver by W. J. McMaster & Sons, Ltd., who are also jobbers for all sorts of men's furnishings and loggers' supplies. The business was started about sixteen years ago by Mr. W. J. McMaster as an agency and jobbing concern, and incorporated in 1905, shortly after its founder's death. A controlling interest in the company is now held by Mr. James A. McMaster and Mr. E. B. McMaster, acting as president and vice-president, respectively; the former is also managing director, while the latter has charge of the sales department and looks after the distribution of their product throughout British Columbia.



The rapid growth of the business, both as an agency and manufactory, rendered it necessary for the company to move from their old downtown premises on Cordova street and seek a larger and permanent home, and 1911 found them installed in a fine three-story building erected by themselves and carefully planned to meet the needs of increased business.

The building, a cut of which appears on this page, is in the heart of the new wholesale district on Homer street.

The last twelve months has been a period of exceptional growth with this firm, who have shared to the full in Vancouver's increasing prosperity, and the outlook for 1912 is very bright.

THE BRACKMAN-KERR MILLING COMPANY



The Brackman-Kerr Milling Company, which represents our great cereal and milling interests, was established in the year 1878 and incorporated in 1897. The Vancouver warehouse is one of the finest three-story buildings of its kind in the west, and was constructed on special plans to meet the requirements of this business. This concern is the largest of its kind in the west. Its trade mark, "B. & K.," long significant of purity and excellence, is

known all over Western Canada, throughout which immense territory it is shipping its products in constantly increasing quantities.

Branch houses in most of the cities and larger towns of British Columbia and Western Canada enable this firm to touch western cereal markets at many points, and thus bring the producer and consumer directly together without other intermediary.

KELLY DOUGLAS & COMPANY LIMITED



One of the many objects of interest encountered by the visitor to Vancouver is the immense new wholesale grocery warehouse of Kelly, Douglas & Co., Ltd. This building has a frontage of 166 feet by 120 feet deep extending from Water street to the tracks of the Canadian Pacific Railway, and is one of the most handsome of its kind, being built of pressed brick and ornamented with dressed sandstone.

Kelly, Douglas & Co., Ltd., operate their business on the most modern and approved manner, supplying every comfort and convenience for their employees, including dining-room and rest room for female employees.

The company at present employ some 175 people between the Vancouver head office and the branches at New Westminster and Prince Rupert, and when their new factory on Beattle street is completed and in operation, will give employment to about fifty additional hands. Kelly, Douglas & Co., Ltd., operate the largest wholesale grocery business in the Dominion of Canada, and are the proprietors of the well-known "Nabob" brand, the product of their own factory.

"Nabob Brand" embraces tea, coffee, spices, extracts, jelly powders, and many other favorably known articles of daily household use.

ROSS & HOWARD IRON WORKS COMPANY LIMITED



In 1892 Mr. John F. Ross and Mr. James Howard established on Alexandra Street the Ross and Howard Iron Works which have since been capitalized for \$250,000.

From very small beginnings this company has grown to be a most important one with machinery capable of handling the largest work in its line in the city. Having twice during its business career out grown its plant, it now occupies seven acres on the waterfront of Burrard Inlet just east of the B. C. Sugar Refinery, and employs 200 hands.

The Retirement of its president Mr. John Ross from active participation in business has left the management of the works in the capable hands of the Vice-President, Mr. James Howard and the Sec'ry.-Treas. Mr. John Ross who are both practical mechanics.

On this page we reproduce a recent photograph of the works on Powell Street which gives some idea of the size and importance of this industry.

Messrs. CAMERON AND HESKETH



From the plant photographs of which we reproduce on this page are turned out the well known Canadian Standard and Easthope Marine and Stationary gasoline engines.

The business was established some six years ago. Messrs. C. W. Cameron and Ellis Hesketh have recently erected a fully equipped foundry for iron, brass, and aluminum castings and an up-to-date pattern shop. The present plant stands on the water front at the west end of the city and employs some 25 hands.

Messrs. Cameron and Hesketh report a constantly increasing demand for the Canadian Standard and Easthope engines which are their principal product and are delighted at all times to show visitors over the plant and allow them to see the entire process by which the raw Material is converted into the smooth running and powerful engines for which they are famous.

Messrs. CAMERON AND HESKETH



MACHINE SHOP

FOUNDRY

THE BRITISH COLUMBIA SUGAR REFINING COMPANY.



The British Columbia Sugar Refining Co., one of Vancouver's most important industries has arisen at the bidding of Mr. B. T. Rogers, the President and General Manager of the Company, who, with admirable foresight and enterprise, launched the undertaking on his arrival in this city 24 years ago and whose typical western spirit and ability have built up the great business of which he is the head.

The Company gives employment to 300 hands and their buildings, which are modern in every respect and notable as the first in the city to possess a complete sprinkler system, cover over ten acres. In addition to the Powell Street plant the Company own and operate their own Cooperage on False Creek and their own line of Tank cars in which to ship syrup while their up-to-date Auto delivery cars are constantly to be seen on the streets of Vancouver.

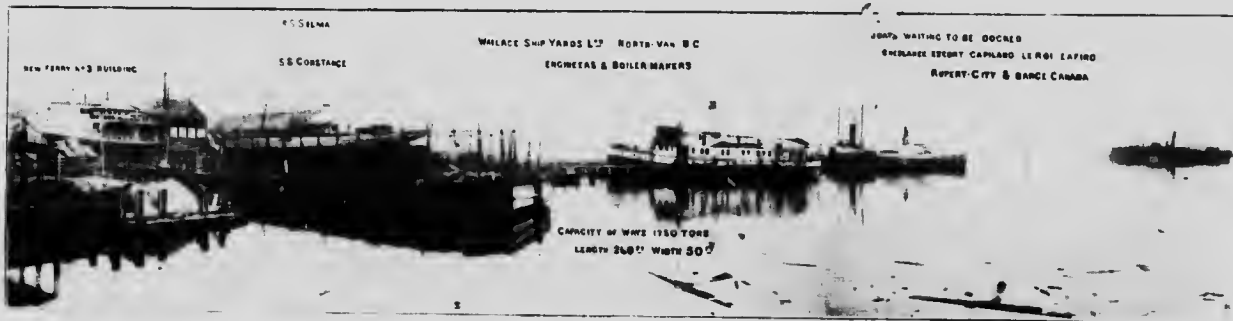
Only cane sugar (a large part of which comes from the company's plantations in Fiji) is used in the manufacture of their products.

On this page we reproduce a photograph of the refinery on Powell Street the smaller picture in the corner being from a photograph of the first plant built by Mr. Rogers in 1890.

WALLACE SHIPYARDS LIMITED

Vancouver is destined to be one of the greatest shipping ports on the Pacific and year by year as more and larger ships pass in and out, the demand for ship builders and shipyard work increases.

On this page we present a photograph of the Wallace Shipyards Limited, situated a few hundred feet to the east of the foot of Lonsdale Avenue, North Vancouver, which present an animated scene of industry. Here on every side of us are ships in course of construction and those that have been injured in their fight with the waters and have been brought to the shipyards for repairs and alterations.



The Wallace shipyards are complete and up-to-date in every respect and contain machine shops, boiler shops, and marine ways with a capacity of 2000 tons deadweight, where vessels are painted and all kinds of steel, iron and woodwork executed. Coppersmith work and galvanizing are among the specialties of this company, which also has the agency for Holzapfal's Ltd. Anti-corrosive, anti-fouling and copper paints.

PIONEER STEAM LAUNDRY



In the Pioneer Steam Laundry, a photograph of whose home we reproduce on this page, Vancouver can boast of possessing the most up-to-date and complete laundry plant in the whole of Canada.

Established in 1890 by Mr. D. M. Stewart who then employed but ten hands, the business has grown with the city and now gives permanent employment to upwards of 273 persons and 23 rigs.

THE BANK OF VANCOUVER, Head Office, VANCOUVER, B. C.
Incorporated by Act of Parliament 1910

BOARD OF DIRECTORS

R. P. McLENNAN
President

L. W. SHATFORD, M. L. A.
Vice-President

HON. T. W. PATTERSON,

J. A. MITCHELL

M. B. CARLIN

J. A. HARVEY, K. C.

E. H. HEAPS

A. ISTELE

C. S. DOUGLAS



BRANCHES

VANCOUVER, B. C.

PENDER ST., Van.

BROADWAY W. (Van.)

GRANVILLE ST. (Van.)

CHILLIWACK, B. C.

COLLINGWOOD, E., B. C.

HAZELTON, B. C.

CEDAR COTTAGE, B. C.

COQUITLAM, B. C.

FORT GEORGE, B. C.

VICTORIA, B. C.

GOVERNMENT ST. (Vict.)

NEW WESTMINSTER, B. C.

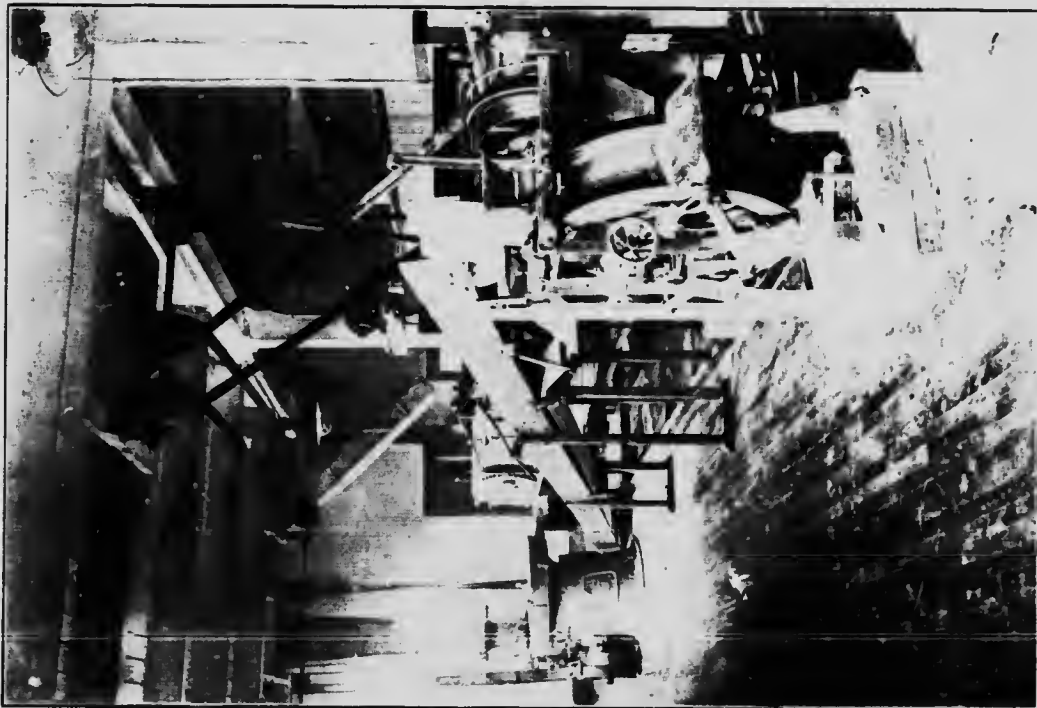
Capital Paid - \$749,608 - - Authorized Capital - \$2,000,000

HAMPTON'S BAKERY



HAMPTON'S BAKERY

Messrs. Hampton Bros. Bakery, the interior of which we illustrate on these pages, was established six years ago. The business has grown very rapidly since its commencement, and already twenty-eight men are employed and 12 delivery wagons are found necessary to distribute their products. The company, which was incorporated in 1909, operates two plants: one at Seventh and Pine for bread and one at Sixth and Granville, where their well known cakes are made. Both plants are models of all a bakery should be, and visitors will find much of interest to repay a tour of inspection.



Inter. of Hampton Bros. Bakery

COLUMBIA TAXI CAB COMPANY LTD. SALES DEPARTMENT



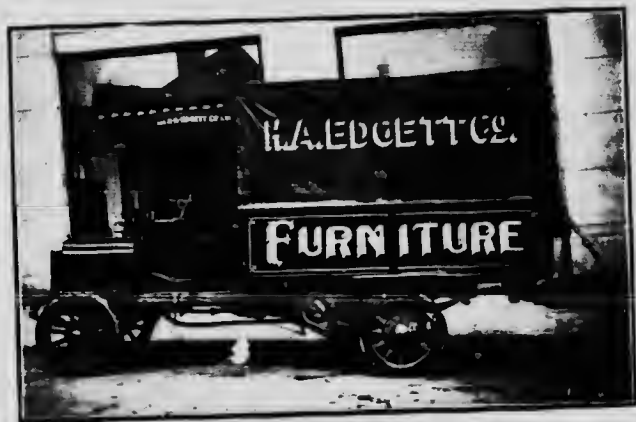
The advent of the Commercial Cars, Ltd., of Luton, England, manufacturing the "Commer Car," into the motor truck field, marked the beginning of scientific study of motor trucks for the purpose of reducing delivery cost for business houses and for the economical transportation of passengers by means of gasoline motor-propelled tram cars.

The highly efficient motors of the "Commer Car" produce the maximum of horsepower with the minimum of petrol or gasoline consumption. In fact, statistics show that the "Commer Car" motor consumes less gasoline per horsepower than any other known motor.

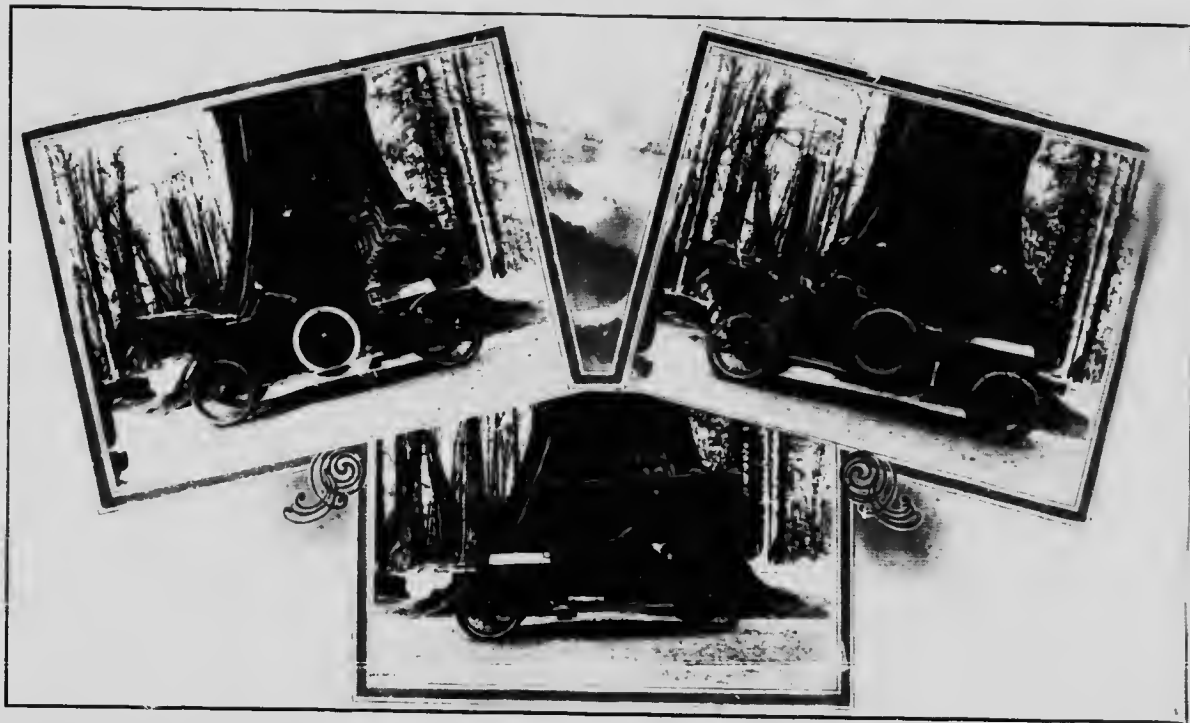
That the "Commer Car" has achieved the distinction of having the only perfected power transmission

is evidenced by the guarantee which the manufacturers place upon their gear box, as they guarantee that vital part of the transmission for a period of two years from the date of delivery. The full force of this particular feature is at once realized when other motor manufacturers are asked to guarantee the most vital and abused part of a motor truck, the gear box.

The Commercial Cars, Ltd., are represented in British Columbia by the Columbia Taxi-Cab Company, Ltd., Sales Department, who are, at all times, pleased to prepare specifications and quotations for possible purchasers, upon inquiry.



COLUMBIA TAXI CAB COMPANY LTD. GARAGE



The Columbia Taxi-Cab Company, Ltd., whose garage is on Seaton street, offer prompt and efficient service to the Vancouver public, and have recently installed a branch telephone exchange (Seymour 26), connecting all stands in the city, thus reducing delay in filling orders to a minimum. We reproduce on this page photographs taken in Stanley Park of three types of automobiles used by the company.

THE BRITISH COLUMBIA LIFE ASSURANCE COMPANY, Head Office, VANCOUVER, B. C.



General Manager's Office

President
JONATHAN ROGERS

Vice-Presidents
JOHN J. BANFIELD
W. L. SHATFORD, M.P.P.

Directors
L. A. LEWIS
T. E. LADNER
J. T. PHALEN
D. C. WILLIAMS
F. C. WADE, K. C.
J. U. ELLIS

CAPITAL AUTHORIZED \$1,000,000

CAPITAL SUBSCRIBED \$1,000,000

THE BRITISH COLUMBIA LIFE ASSURANCE COMPANY, Head Office, VANCOUVER, B. C.

HEAD OFFICE OFFICIALS

Manager

SANDFORD S. DAVIS

Secretary

C. F. STIVER

Medical Director

W. D. BRYDONE-JACK

Solicitor

W. C. BROWN



General Office

THE BRITISH COLUMBIA LIFE ASSURANCE COMPANY, Head Office, VANCOUVER, B. C.

BRANCH OFFICES

British Columbia : Victoria

RAY ANDERSON
Manager

Alberta : Calgary

J. H. McCOULOUGH
Manager

Saskatchewan : Regina

L. FENWICK DICKSON
Manager

Manitoba : Winnipeg

GEO. A. POW
Manager



Actuarial Department

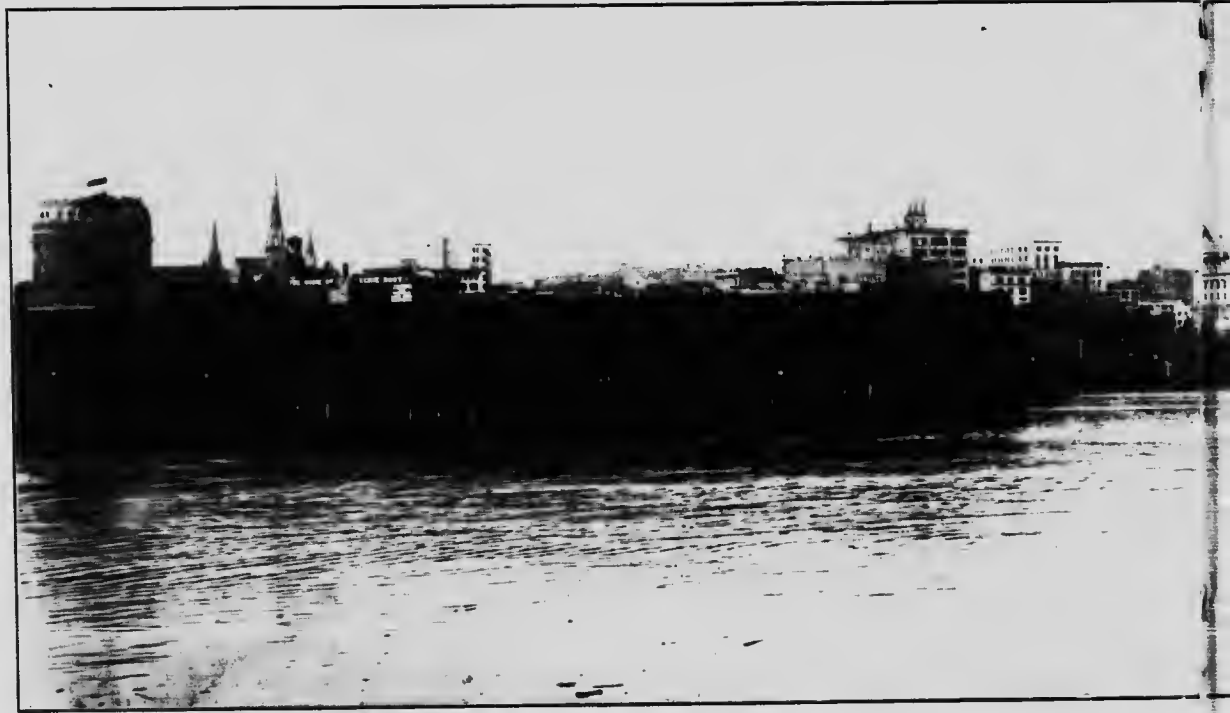
THE BRITISH COLUMBIA LIFE ASSURANCE COMPANY, Head Office, VANCOUVER, B. C.



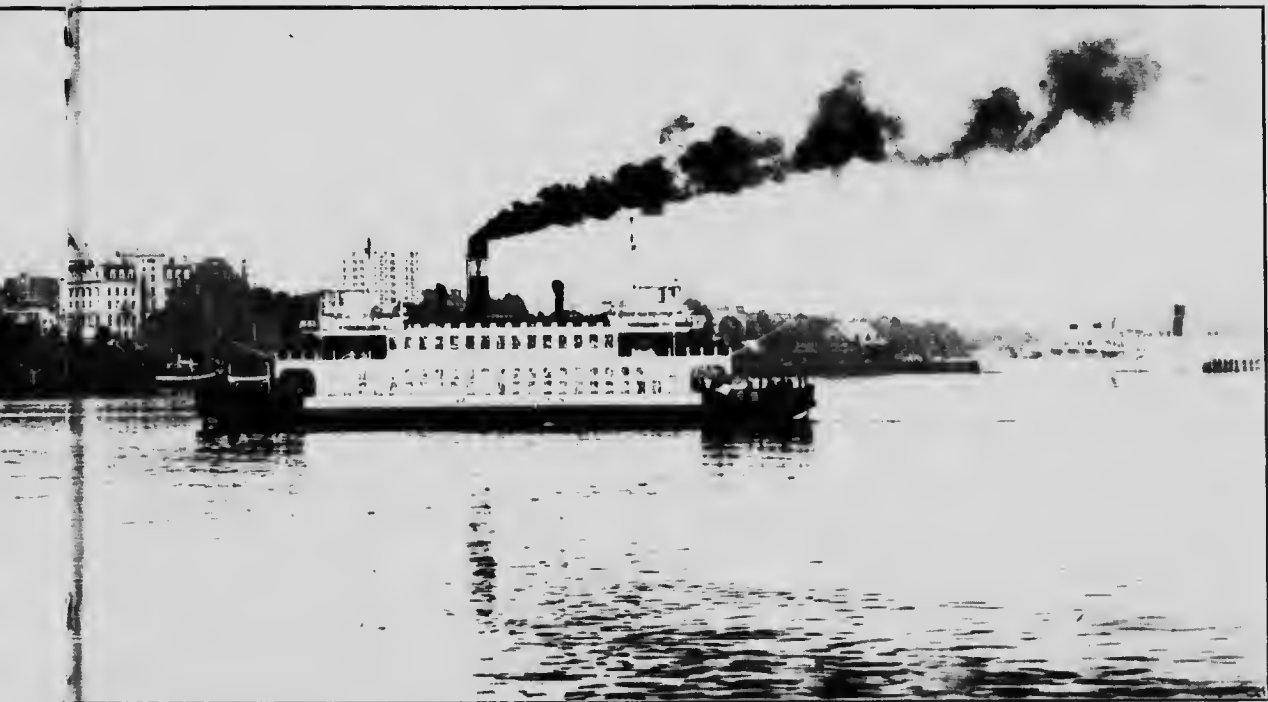
Office of the Medical Director

Applications for insurance received from May 16th 1911 to January 1st 1912 amounting to \$1,500,000.00

Amount applied for the first two months of the present year \$500,000.00



VANCOUVER WATER FRONT SHOWING NORTH VANCOUVER F



DUVER FERRY, EVANS, COLEMAN & EVANS WHARF, C. P. R. DOCKS

BURKE & WOOD TRANSFER CO.



Some three years ago Messrs. A. L. Burke, S. C. Wood and J. A. Clark established the Burke & Wood Transfer Co., with the object of supplying the Vancouver merchants and others with an up-to-date and reliable transfer service. From very small beginnings, this concern has experienced rapid and steady growth, till today the twenty teams which it operates—a photograph of one of which is reproduced on this page—are barely sufficient to cope with the business offered. The head office is at 157 Water street, where Messrs. Burke & Wood have special storage facilities.

VANCOUVER BREWERY



Mr. Charles Doering, the president of the B. C. Breweries, Ltd., which owns and controls the Canadian Brewing & Malting Co., Ltd., the Vancouver Breweries, Ltd., the Union Brewery of Nanaimo, and the Pilsner Brewery of Cumberland, B. C., established the business of which he is now the head under the title of Chas. Doering. Nine years from that time, namely, in 1900, the company amalgamated with the Red Cross Brewery and incorporated under the name of the Vancouver Brewery, Ltd., and later on both companies were absorbed by the B. C. Breweries, Ltd. This company, which is capitalized for \$2,000,000.00, recently erected a modern and up-to-date plant in Kitsilano, but already the business has outgrown the capacity of their plant and a very much larger one will be erected by them in Vancouver within twelve months at a cost of over \$300,000.00.

WESTERN CANADA POWER COMPANY

The advent of the Western Canada Power Company, Vancouver's second electrical power supply, marks an important epoch in the city's history and adds to the assurance of an ample supply of cheap light and power, so necessary to the success of an important manufacturing and industrial metropolis.



FOREBAY AND POWER DAM

View taken shortly after the completion of the dam, and with only 35 feet of water against the dam

Now that the company has its power plant at Stave River Falls completed as far as the initial stage is concerned, and the generation of current to the extent of 26,000 horsepower is practically complete, with the electrical energy already in Vancouver, the company intends to devote all its energies to extending the distributing system and will spend over one million dollars during this year in gridironing Vancouver with underground electric cables carrying current for lighting and power purposes, and this system will extend not only into Vancouver, but to South Vancouver, Point Grey, Burnaby and New Westminster also.

WESTERN CANADA POWER COMPANY

It is conceded by the most expert hydraulic and electrical engineers that the Western Canada Power Company has one of the most modern and economically operated power plants on the continent at Stave River Falls. And the electrical distribution system which is to supply Greater Vancouver with the subtle fluid is to be in keeping in every way with the plant. In other words, it is to be the most modern and improved in Canada. Nothing in all Canada, with the possible exception of the Niagara Electric Company's system in Ontario, will compare with the system that is now being installed in Vancouver.



POWER HOUSE, STAVE RIVER FALLS

From centre of Tail Race

BARBER MATTRESS COMPANY LIMITED

Eight years ago Mr. F. H. Barber commenced in a small way the manufacture of mattress springs, pillows, and other upholstery goods, gradually building up the trade and extending his field of operations, until in 1908 he incorporated the company of which he is president under the title of the "Barber Mattress Co., Ltd.," whose "Restmore Mattress" is now so well and favorably known throughout the province.

From small beginnings this undertaking has grown to be the largest factory in its line between here and Winnipeg, and its output is now market-



ed throughout a very large territory, extending eastwards to Alberta and northwards to the Yukon.

The plant has been enlarged from time to time in an effort to keep pace with the rapidly growing demand for its product; and quite recently a new spring-making machine of the very latest type, with a capacity of 125 springs per day, has been installed, giving the factory a total capacity of 225 springs per day.

The illustration is from a photograph of a corner of the warehouse in the company's fine three-story building at 16 Dufferin street east.

J. D. ROSS-PERRY COMPANY

The rapid rise and growth of Vancouver as a business centre for the West Coast and the consequent opening of innumerable offices, stores and hotels, has created a most gratifying demand for the best class of bank, office, store and hotel fixtures, and showcases, and this demand is well supplied by the J. D. Ross Perry factory 291 Dufferin St. E. which is the largest in this line in British Columbia, and examples of whose work may be seen in the Hudson Bay, Spencer, Stark and principal newly-equipped stores in the city and many of the leading and most up-to-date stores in Victoria, Nelson, Fernie and Prince Rupert.

It is now twelve years ago since Mr. J. D. Ross established this business in what was then the little town of Vancouver, and his faith in the city as a business centre



has most certainly been justified, the growth and importance of his own business keeping pace step for step with that of the great city which has sprung up around him. Four years ago he secured the co-operation of Mr. J. O. Perry, and from that time the firm has done business under the title of the J. D. Ross-Perry Co.

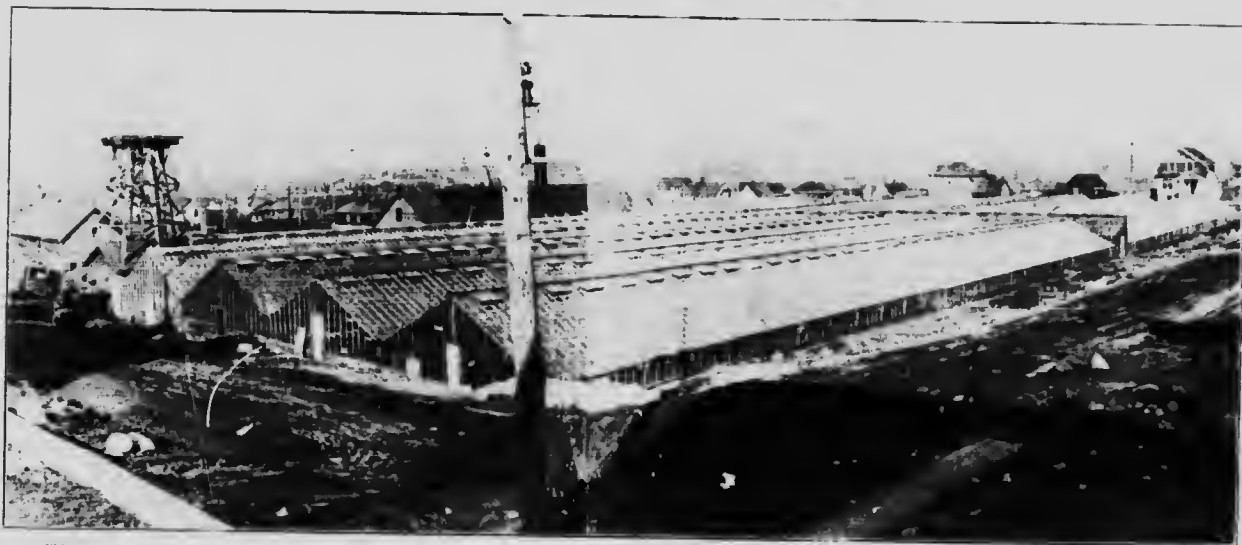
ALLAN AND DODMAN



The rapid growth of the automobile business in Vancouver, and the enormous number of cars, both for business and pleasure, now owned in the city, have created an opening which Messrs. Allan & Dodman have availed themselves of by the establishment of an automobile painting and repair business at 626 Howe street, where already they employ a number of men in automobile painting and body repairs, and in supplying fore doors, auto lamps, slips, covers, etc. A photograph of their workshop is reproduced on this page.



THE BROWN BROS. COMPANY LIMITED



The large and increasing demand throughout British Columbia for flowering bulbs, budding out plants, roses, dahlias and a host of other flowers, not to mention vegetable plants, fruit trees and flowering shrubs, is not to be wondered at when we consider the admirable climatic conditions we enjoy; and this demand is well met by Messrs. Brown Bros. Co., Ltd., a view of some of whose greenhouses on Twen, first and Westminster avenues appears on this

page. The company's store, office and showroom, which amply repays a visit, is at 18 Hastings street east, and a branch nursery at Port Hammond, B. C. The Brown Bros. Co., Ltd., does a very large local and mail order business, which is continually increasing in volume as the country fills up and new gardens and farms are brought under cultivation.

HUDSON'S BAY STORES. Corner of Granville and Georgia Streets, VANCOUVER, B. C.



THE NORTH VANCOUVER COAL AND SUPPLY COMPANY LIMITED.

We reproduce on this page : photograph of a portion of the works of the North Vancouver Coal and Supply Company Limited whose rapid and gratifying growth is typical of Vancouver, the monthly business done having increased from \$500 to \$20,000 in a phenomenally short space of time. The present pay roll amounts to \$1500 per week and the number of hands employed will probably be largely increased in the near future.

The North Vancouver Coal and Supply Company Ltd. which has recently completed large contracts for Plumbing and Heating on the St. Alice Hotel and the New Theatre is capitalized for \$100,000. Among its specialities may be mentioned Plumbing and Sheet Metal Work, Coal, Gravel, Sand,

Cement, Lime, Fibre, Bricks of all kinds, Laths, Fire Clay, Agricultural Tile and Vitrified Sewer Pipe.

The President and General Manager of the Company is Mr. L. S. Eaton, while Mr. F. M. Bressy and Mr. C. H. Farrow are Directors and actively engaged in the conduct of the business, the last named gentleman being Sec'y-Treas. of the Company.



DAVIES PAPER BOX CO. PACIFIC ELECTRIC HEATING CO. WESTERN MAN'F'G. CO. Ltd.



Among the younger industries of Vancouver the Davis Paper Box Company stands out prominently as an illustration of rapid and solid growth.

This Company, whose factory is at 1670 Pandora St., was established in 1910 by Mr. W. H. Davies formerly of the Holliday Paper Box Co. of Detroit, Mich. and the C. R. Somerville Paper Box Co. of London, Ont.

The Davies Paper Box Co. whose product is shipped to all parts of British Columbia, already gives steady employment to 25 hands and will this year largely increase their plant to keep pace with the growing demand for their boxes.

The Vancouver Factory of the Pacific Electric Heating Co. is also in the fine three story building pictured on this page where are manufactured the famous HOT POINT irons so well known to all housewives and travellers together with a host of other 20th century electric luxuries and conveniences.

The Western Manufacturing Co., Ltd. (successors to Messrs. Campbell and Campbell) which is under the able management of Mr. Stuart George, is the largest Electric Plating concern west of the Rocky Mountains. Among this Company's specialities should be mentioned, Spring Stamping and all classes of Brass Manufactures in which Departments they have no British Columbian competitors.

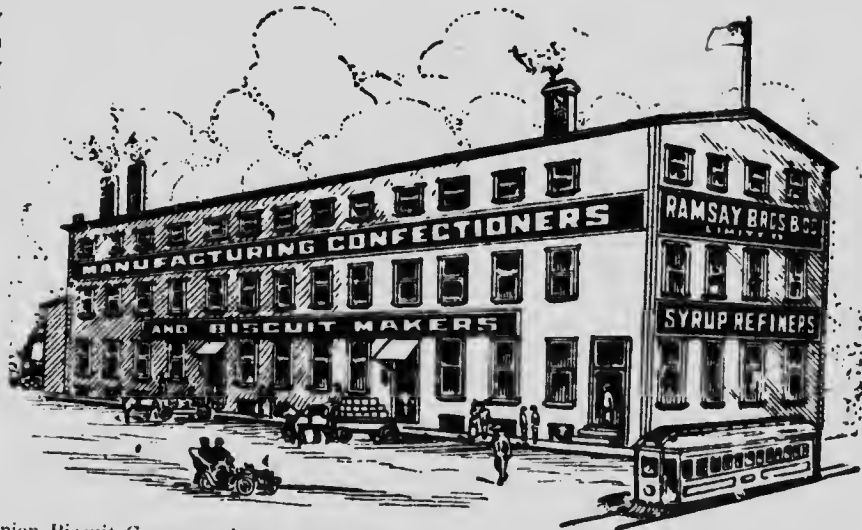
RAMSAY BROS. AND COMPANY LIMITED

Twenty years ago Mr. James Ramsay and Mr. William Ramsay established the first candy factory in British Columbia which has to-day grown to such large proportions by shere force of energy and optimism on the part of the founders and the excellence of their products. During the first few years Mr. Ramsay manufactured his toothsome candies personally while to-day the factory contains nearly 2 acres of floor space and employs 125 hands and 2 heavy delivery trucks.

Some ten years ago a Biscuit department was added, which has proved a phenominal success the name "Empire Cream Sodas" having become a household word throughout Canada.

In addition to the Vancouver factory, Messrs. Ramsay Bros, now trading under the name of the Dominion Biscuit Company, have established a branch factory in Montreal to supply Eastern Canada.

The illustration which appears on this page is of the Powell Street factory which will well repay a visit of inspection.



McDOUGAL JENKINS ENGINEERS LIMITED



MCDUGAL-JENKINS ENGINEERS LIMITED

Among the most prominent industrial undertakings on the North shore is the Steel Ship Building and General Engineering Firm which has in the past been known as McDougal-Jenkins Engineers Limited, and which was established in 1909 continuing the business of the old Albion Iron Works and taking over all Patterns and Drawings of that concern. A change of name is however, in contemplation, and application has been made to the Registrar of Joint Stock Companies for permission to assume the title of North Shore Iron Works Limited.



The rapid growth of the business of which the Hon. F. Carter-Cotton is president and Chairman, Mr. William C. Shaw, Manager and Mr. Ernest V. Young, Secretary, has compelled the company within the last few months to largely increase its plant, which now occupies 200 feet of waterfrontage on the North Shore, by the addition of a new Pattern Shop, Machine Shop and Foundry, fitted with the most up-to-date equipment, and within the next six months the permanent force employed will be at least 100 men thus more than doubling the present pay roll.

THE CANADIAN FERRO-CONCRETE COMPANY LIMITED



Richards Street now nearly completed.

Not many years ago Vancouver was a city of wooden buildings with here and there a brick or stone structure but to day only the most modern and up-to-date materials are used in the construction of the splendid office buildings which are springing up on every available site.

On this page we reproduce two photographs of one of these buildings, one in course of construction showing the reinforced concrete frame, and the other the completed building.

The Bank of Ottawa building illustrated on this page (architects Messrs. Somerville and Putman) is of ferro-concrete and was constructed by the Canadian Ferro-Concrete Co., Ltd. the pioneers in reinforced concrete construction.

Many of Vancouver's buildings stand to the credit of this company, among which may be mentioned the Pacific Building in which they have their office, the Pioneer Steam Laundry, which is illustrated on another page, the Hotel Europe, the School Office Building, and the Canada Permanent Building on



This company is now beginning work on the ten story reinforced concrete building for the London and British North America Co. on Pender Street, and on the ten story Ramsay Hotel on Burrard Street.

THE EMPRESS MANUFACTURING COMPANY LIMITED

The Empress Manufacturing Co., Ltd., incorporated eighteen years ago, has been for the last two and a half years under its present management.

Started in a very small way, it now occupies five floors, 110x100, in Vancouver, and a district branch in Calgary. The company employs nine travelers, covering Manitoba, Saskatchewan, Alberta and British Columbia, and manufacture jams, jellies, pickles, sauces, catsups, and deal in spices, teas, coffee, baking powder, and extracts of the well-known Climax and Empress brands.

The factory is situated in the new wholesale district and is the largest in Western Canada, employing one hundred hands, and the demand for their output is rapidly increasing.



Empress Manufacturing Co., Ltd., Vancouver, B. C.

EASTERN LADIES' TAILORING CO.



For many years Vancouver was distinctly a man's town, the inclination of the early pioneer being to leave his wife and family in the East while he went forward to find a place for himself and them in the new country; but while the male element still predominate, every day sees the arrival of the wives and families of those who have come out to make a home and share in the prosperity of the last and greatest West. And with these new arrivals comes the constant and increasing demand for the best in the way of women's costumes, both for the street and house.

A couple of years ago Mr. Cohen established the business now so well known as the Eastern Ladies' Tailoring Co. whose present headquarters are at 510 Granville Street, and, starting in a small way, has rapidly attracted, by the excellency of his work, a large and increasing clientele, and now employs a large number of hands in his workrooms.

THE B. C. ANCHOR FENCE COMPANY LTD.



The B. C. Anchor Fence Co., Ltd. (head office, 1631 Pender st.) of which Mr. F. G. Crickmay is managing director, has been operating for about seven teen years, doing a large mail order business throughout the whole of British Columbia.

This company manufactures wire fences and gates, and crimped wire fences and fancy grill work for bank and office fixtures, and elevator enclosures, etc., employing about twelve men in their factory and erecting work outside. The example of their work, which we illustrate on this page, is erected in Stanley Park.

J. N. HARVEY LIMITED



Victoria Stores, 614-616 Yates Street

Although J. N. Harvey, Limited, have only been doing business in Vancouver for some fifteen months, succeeding Messrs. Johnston, Kerfoot & Co., and in Victoria for about ten months, succeeding Messrs. B. Williams & Co., this young firm has built up for itself a splendid reputation; in fact, is as well known to the people of British Columbia as many business houses who have been doing business here for many years. Everything in wearing apparel, from the smallest

necessity for man or boy to the finest and smartest tailored garments yet produced, will be found in the Harvey stores. During the first twelve months in the Vancouver stores this new firm more than doubled the large business done by its predecessors; and if the same increase continues, a like condition will be found in Victoria also at the end of the first year. This has been made possible by the splendid reputation of the firms succeeded; by the large increase of population, in both cities; by judicious advertising, and by the carrying of splendid stocks of merchandising. A visit to either of these stores will prove to be a real education as to what is really correct in men's and boys' wear. You will find a splendid staff of competent and obliging salesmen in charge who will gladly show you through.



Vancouver Stores, 125-127 Hastings Street, West

STUART THOMSON

If good advertising is the life blood of business, suitable illustrating is certainly a vital part of Strong advertising. The general acceptance of the saying "A Photograph cannot Lie," renders this type of illustrating peculiarly suitable for commercial purposes.

Mr. Stuart Thompson whose premises at the corner of Georgia and Richard St. are depicted on this page has taken advantage of the demand for commercial photography and in the course of a few months has got together a large and rapidly increasing clientele of Vancouver Business men who are as we all know up-to-date and persistent advertisers.



GOODS ROADS AND STREETS THE PART PLAYED BY BITULITHIC IN THE MAKING OF THEM.

Nowhere in the world has the primeval wilderness been transformed into a big city as quickly as where Vancouver is located. Here trails through the forests have become in a very few years main thoroughfares and wide boulevards. Road-making and street-paving have received great attention, yet there is still an enormous amount of paving to be done in Vancouver and the surrounding municipalities and the question as to what are the best pavings has much importance.

The requirements of a good pavement may be numerated as follows :
1. Durability ; 2. Good footing for horses ; 3. Resiliency ; 4. Non-slipperiness ; 5. Noiselessness ; 6. Easy drainage ; 7. Surface permitting easy cleaning ; 8. Dustlessness ; 9. Low cost.

In attempts to fulfill these requirements pavements of brick, granite blocks, wooden blocks, and asphalt have been largely used.



The kind of pavement which has seen the greatest development in recent years is asphalt. Various combinations of asphalt and broken stone have been used, but the most scientific combination is bitulithic pavement. This is very durable, and in general combines in greater degree than other kind of paving the requirements above mentioned of a perfect pavement.

Its success in Vancouver, is seen on the Granville Street extensions, on Georgia Street, and on a number of other leading thoroughfares, where bitulithic has won the high commendation of the drivers of horses and automobiles and of the residents of these localities. One of the strongest features of bitulithic is its durability, which makes it much more economical in the end than pavements costing a little less at the beginning.

Printed by
James F. Morris Co.
Manassas, B.C.

