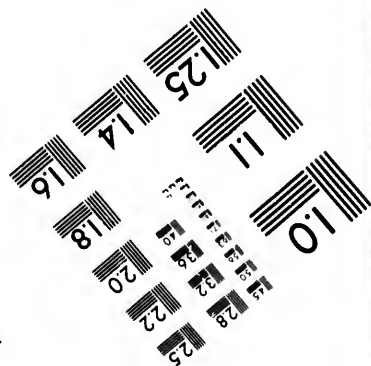
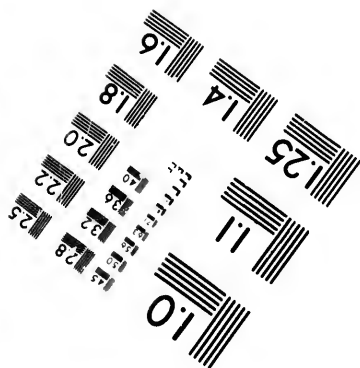
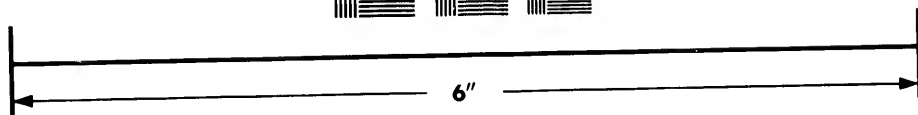
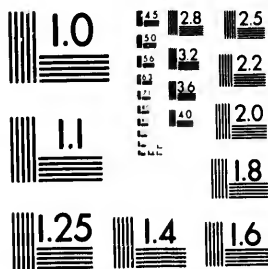


**IMAGE EVALUATION  
TEST TARGET (MT-3)**



**Photographic  
Sciences  
Corporation**

23 WEST MAIN STREET  
WEBSTER, N.Y. 14580  
(716) 872-4503



**CIHM/ICMH  
Microfiche  
Series.**

**CIHM/ICMH  
Collection de  
microfiches.**



Canadian Institute for Historical Microreproductions / Institut canadien de microreproductions historiques



**© 1981**

Technical and Bibliographic Notes/Notes techniques et bibliographiques

The Institute has attempted to obtain the best original copy available for filming. Features of this copy which may be bibliographically unique, which may alter any of the images in the reproduction, or which may significantly change the usual method of filming, are checked below.

L'Institut a microfilmé le meilleur exemplaire qu'il lui a été possible de se procurer. Les détails de cet exemplaire qui sont peut-être uniques du point de vue bibliographique, qui peuvent modifier une image reproduite, ou qui peuvent exiger une modification dans la méthode normale de filmage sont indiqués ci-dessous.

- Coloured covers/  
Couverture de couleur
- Covers damaged/  
Couverture endommagée
- Covers restored and/or laminated/  
Couverture restaurée et/ou pelliculée
- Cover title missing/  
Le titre de couverture manque
- Coloured maps/  
Cartes géographiques en couleur
- Coloured ink (i.e. other than blue or black)/  
Encre de couleur (i.e. autre que bleue ou noire)
- Coloured plates and/or illustrations/  
Planches et/ou illustrations en couleur
- Bound with other material/  
Relié avec d'autres documents
- Tight binding may cause shadows or distortion  
along interior margin/  
La reliure serrée peut causer de l'ombre ou de la  
distortion le long de la marge intérieure
- Blank leaves added during restoration may  
appear within the text. Whenever possible, these  
have been omitted from filming/  
!! se peut que certaines pages blanches ajoutées  
lors d'une restauration apparaissent dans le texte,  
mais, lorsque cela était possible, ces pages n'ont  
pas été filmées.
- Additional comments:/  
Commentaires supplémentaires:

- Coloured pages/  
Pages de couleur
- Pages damaged/  
Pages endommagées
- Pages restored and/or laminated/  
Pages restaurées et/ou pelliculées
- Pages discoloured, stained or foxed/  
Pages décolorées, tachetées ou piquées
- Pages detached/  
Pages détachées
- Showthrough/  
Transparence
- Quality of print varies/  
Qualité inégale de l'impression
- Includes supplementary material/  
Comprend du matériel supplémentaire
- Only edition available/  
Seule édition disponible
- Pages wholly or partially obscured by errata  
slips, tissues, etc., have been refilmed to  
ensure the best possible image/  
Les pages totalement ou partiellement  
obscurcies par un feuillet d'errata, une pelure,  
etc., ont été filmées à nouveau de façon à  
obtenir la meilleure image possible.

This item is filmed at the reduction ratio checked below/  
Ce document est filmé au taux de réduction indiqué ci-dessous.

10X	12X	14X	16X	18X	20X	22X	24X	26X	28X	30X	32X
<input type="checkbox"/>	<input type="checkbox"/>	<input type="checkbox"/>	<input type="checkbox"/>	<input type="checkbox"/>	<input type="checkbox"/>	<input checked="" type="checkbox"/>	<input type="checkbox"/>	<input type="checkbox"/>	<input type="checkbox"/>	<input type="checkbox"/>	<input type="checkbox"/>

The copy filmed here has been reproduced thanks to the generosity of:

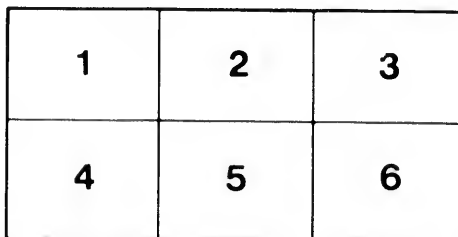
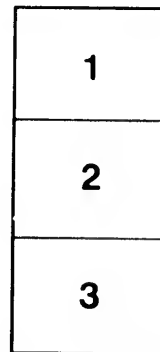
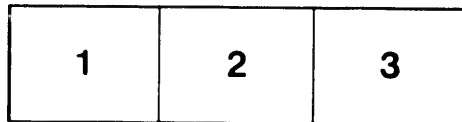
Library Division  
Provincial Archives of British Columbia

The images appearing here are the best quality possible considering the condition and legibility of the original copy and in keeping with the filming contract specifications.

Original copies in printed paper covers are filmed beginning with the front cover and ending on the last page with a printed or illustrated impression, or the back cover when appropriate. All other original copies are filmed beginning on the first page with a printed or illustrated impression, and ending on the last page with a printed or illustrated impression.

The last recorded frame on each microfiche shall contain the symbol  $\rightarrow$  (meaning "CONTINUED"), or the symbol  $\nabla$  (meaning "END"), whichever applies.

Maps, plates, charts, etc., may be filmed at different reduction ratios. Those too large to be entirely included in one exposure are filmed beginning in the upper left hand corner, left to right and top to bottom, as many frames as required. The following diagrams illustrate the method:



L'exemplaire filmé fut reproduit grâce à la générosité de:

Library Division  
Provincial Archives of British Columbia

Les images suivantes ont été reproduites avec le plus grand soin, compte tenu de la condition et de la netteté de l'exemplaire filmé, et en conformité avec les conditions du contrat de filmage.

Les exemplaires originaux dont la couverture en papier est imprimée sont filmés en commençant par le premier plat et en terminant soit par la dernière page qui comporte une empreinte d'impression ou d'illustration, soit par le second plat, selon le cas. Tous les autres exemplaires originaux sont filmés en commençant par la première page qui comporte une empreinte d'impression ou d'illustration et en terminant par la dernière page qui comporte une telle empreinte.

Un des symboles suivants apparaîtra sur la dernière image de chaque microfiche, selon le cas: le symbole  $\rightarrow$  signifie "A SUIVRE", le symbole  $\nabla$  signifie "FIN".

Les cartes, planches, tableaux, etc., peuvent être filmés à des taux de réduction différents. Lorsque le document est trop grand pour être reproduit en un seul cliché, il est filmé à partir de l'angle supérieur gauche, de gauche à droite, et de haut en bas, en prenant le nombre d'images nécessaire. Les diagrammes suivants illustrent la méthode.

rrrata  
to

pelure,  
n à

32X

M  
97  
B

Lat 3 -  
*Brownlee's*

INDEXED MAP

OF



Also Map of YUKON GOLD FIELDS.

Codes—A. E. C., Moreing & Neal, Bedford McNeill.  
Cable Address—"Cortea," Vancouver, B. C.

**Mackinnon, DeBeck & Co.**

**MINING BROKERS  
AND AGENTS**

**611 Hastings St. W.**

**Vancouver, B. C.**

Having been residents of British Columbia for the past twenty-six years, we are in a position to furnish the most reliable information to be obtained respecting the valuable mineral resources of the Province.

**CORRESPONDENCE SOLICITED.**

Represented in London, Eng., by prominent financial brokers.  
Head Office of the "Golden Cache" Mines Co., Ltd., of Lillooet, B. C.

# Clarke & Stuart

## STATIONERS

## and PRINTERS



Drawing Papers, Tracing Papers

Tracing Cloth

Blue Print Paper

Blank Books, Stock Ledgers

Stock Certificates

Copying Letter-Books

Printed Letterheads

Printed Envelopes

Letter Presses, Typewriters



# MAPS

of all the  
Mining  
Districts  
of B. C.



A FULL STOCK OF

## Mathematical and Engineering Instrument

ON HAND.

---

**Miners' Magnifying Glasses and Compasses.**

---

**Telegraphic**

MOREING & NEAL'S,  
BEDFORD McNEILL'S, A. B.

**Codes =**

B. C. Agents for Broomhall's Comprehen-  
sive CIPHER CODE.

---

**Mail Orders Receive Prompt Attention.**

---

**28 Cordova St., Vancouver, B. C.**

art



APS

all the  
ing  
istricts  
B. C.



ument

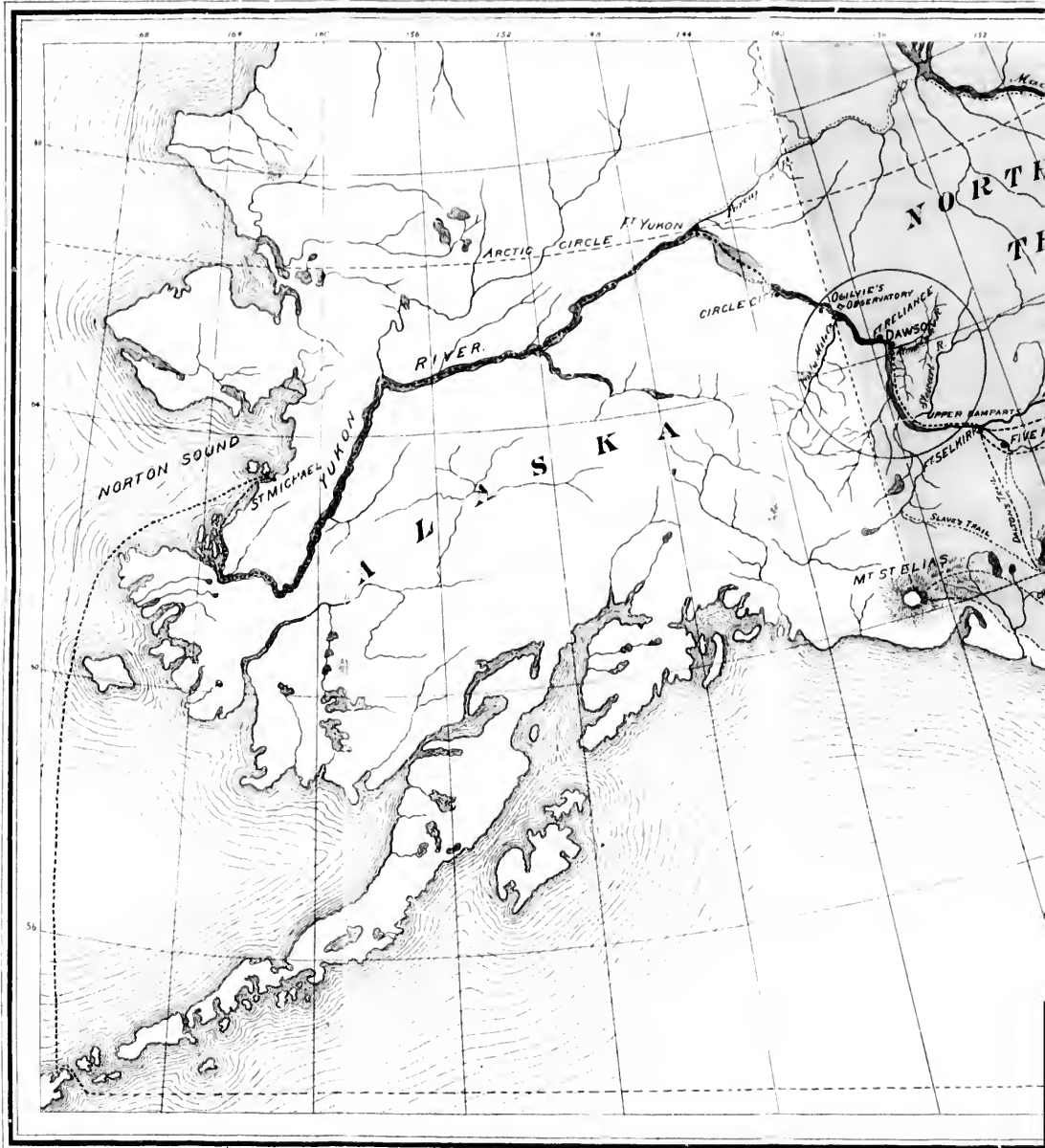
ASSES.

WEAL'S,  
L'S, A. B.  
Compreh

ention.

er, B

# GET PRICES **VANCOUVER** FROM THE Outfitters f



## SPECIALTIES:

Tents,  
Snow Shoes,  
Moccasins,  
Sleds,  
Alaska Pit Saws,

Gold Scales,  
Klondike Picks,  
Axes,  
Dog Harness,  
Pack Saddles,

Pack Straps,  
Sheath Knives,  
Tools.  
Stoves,  
Gold Pans,

*Entered according to Act of Parliament of Canada  
year 1897, by Thomson Stationery Co., Ltd.  
Department of Agriculture, Ottawa*



# EVER HARDWARE CO., Ltd.

## atters for Yukon Gold Fields



According to Act of Parliament of Canada, in the  
 1897, by Thomson Stationery Co., Ltd., at the  
 Department of Agriculture, Ottawa.

144 Cordova St.,  
**VANCOUVER, B. C.**

GEN

Aberdeen, F  
Adams, Lak  
Agassiz, P.  
Ainsworth..  
Airdie, P. C  
Alberni, Ca  
Albert Cand  
Alberni, P.  
Alert Bay,  
Alexandri,  
Alexandria  
Alison, So  
Alkali, La  
Alkali Lak  
Anacortes  
Anderson  
Aristazab  
Armstrong  
Arrowhea  
Arrow (I  
Arrow (I  
Athabas  
Ash, La  
Ashcrof  
Aspen

Baker  
B. 1), C  
Balmo  
Banff  
Banff  
Bark  
Bapt  
Baro  
Baro  
Bar  
Bar  
Ba  
Be  
Be  
B

# GENERAL INDEX.

---

Aberdeen, P. O. ....	E	1
Adams, Lake.....	P	4
Agassiz, P. O.....	N	6
Ainsworth.....	S	6
Airdie, P. O.....	V	4
Alberni, Canal.....	K	6
Albert Canon.....	R	4
Alberni, P. O.....	K	6
Alert Bay, P. O.....	I	5
Alexandri, Peak.....	J	6
Alexandria, P. O.....	M	3
Alison, Sound.....	I	4
Alkali, Lake.....	M	4
Alkali Lake, P. O.....	M	4
Anacortes, City.....	M	7
Anderson, Lake.....	M	5
Aristazable, Island.....	F	3
Armstrong.....	P	5
Arrowhead, P. O.....	R	5
Arrow (Lower), Lake.....	Q	6
Arrow (Upper), Lake.....	R	5
Athabasca, River.....	T	1
Ash, Lake.....	J	6
Ashcroft, P. O.....	N	5
Aspen Grove, P. O.....	O	6
Baker, Mt.....	N	7
B. V., Cape.....	D	2
Balmoral.....	E	1
Bamfield, Mountains.....	K	7
Banff, P. O.....	T	4
Banks, Island.....	E	2
Baptiste, R.....	R	2
Barclay, Sound.....	J	7
Bardswell, Group.....	G	3
Barkerville, P. O.....	N	2
Barnaby, Island.....	D	3
Battle, Creek.....	V	3
Battle, Lake.....	U	3
Beale, Cape.....	J	7
Bear, Lake.....	M	2
Bear, Lake.....	N	2

191038

NWP  
971M  
B885

# ALBERT UFFORD

## Ophthalmic Optician.

Dealer in - - - \* \* \*  
**Watches, Diamonds, Jewelry  
and Optical Goods.**

*Our Repair Department is Unexcelled for Fine Work,  
Chronometer Work a Specialty.*

**58 Cordova St., VANCOUVER, B. C.**

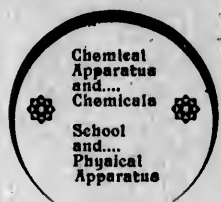
— SEND FOR —

## Catalogue and Price List

—OF—

### ASSAYERS' MATERIALS

# MacFarlane & Co.



## Mine and... Mill Supplies

623 Hastings St. West  
**VANCOUVER, B. C.**

# Davidson Bros.

VANCOUVER, B. C.

Wholesale, Retail and Manufacturing X X

## - - JEWELERS

Good times are here; trade is improving all along the line. Davidson Bros., the Reliable Jewelers, Vancouver, are preparing for the largest fall and Christmas trade in their history. We are buying a very select line of Sterling Silver Novelties which make such nice, useful and cheap Christmas and birthday presents, also the finest line of Watches, Rings, Gold-headed Canes, Chains and Bangle Bracelets, Brooches, etc. We solicit mail orders from those who cannot get in to see us and guarantee satisfaction. Remember we manufacture anything of a special nature in gold or silver. Give us a call—we will be glad to see you.

Beautiful Valley...	K	4
Beaver, Creek.....	M	3
Beaver, P. O.....	R	4
Beddington,.....	S	6
Beddington, P. O.....	V	4
Belfast, P. O.....	J	7
Bella Bella.....	G	2
Bentick, Arm.....	H	3
Big, Creek.....	M	4
Big Bend, Creek.....	Q	4
Black, Canon.....	N	5
Blackberry, River.....	S	4
Blackwater, River.....	L	2
Blaine, P. O.....	M	7
Blue, River.....	P	3
Bluff.....	K	4
Blunden, Harbor.....	H	5
Boat Encampment.....	Q	3
Bonaparte, River.....	N	4
Bonilla, Point.....	K	7
Bow, Lake.....	S	4
Bow, River.....	V	5
Bowen, Island.....	L	6
Braham, Island.....	H	4
Brazeau, River.....	T	3
Bridge, River.....	M	5
Broughton, Island.....	I	5
Brown, Passage.....	E	1
Browning, Entrance.....	E	2
Bull, Passage.....	K	6
Burke, Channel.....	H	3
Burns, Lake.....	J	1
Burnt, Lake.....	R	2
Bush, River.....	R	4
Bute, Inlet.....	K	5
Buttle, Lake.....	J	6
Calgary, P. O.....	V	4
Call, Creek.....	I	5
Calvert, Island.....	G	4
Campania, Island.....	F	2
Campbell, Island.....	G	3
Canadian Pacific, R. R.....	N	6
Canmore, P. O.....	T	4
Canoe, Lake.....	O	4
Canoe, River.....	P	3
Canuma, Prairie.....	I	6
Caprino, Harbor.....	H	5
Carnes, Creek.....	Q	4

lan.

Work.

B. O.

List

S

Co.

ies

West

R, B. C.

DS,

C

ERS

g the line.  
 eparing for  
 e are buying  
 make such  
 ts, also the  
 end Bangle  
 those who  
 member we  
 er. Give us



Cariboo, Lake.....	N	3
Cariboo, Mountains.....	N	2
Cariboo, Road.....	N	4
Carstair, P. O.....	U	4
Cascade, Inlet.....	H	3
Cascade, River.....	T	4
Cash, City.....	U	3
Caution, Cape.....	H	4
Chelan, Lake.....	O	7
Chemainus, Lake.....	K	7
Chemainus, P. O.....	L	7
Cherry, Creek.....	O	5
Cheslahla, Lake.....	J	2
Cheweila.....	R	7
Chilanco, River.....	K	3
Chilco, River.....	K	4
Chilcoh, Lake.....	K	4
Chilcotin, P. O.....	M	4
Chilcotin, River.....	L	3
Chillacoh, River.....	L	2
Chilliwack, P. O.....	N	6
Chinahats.....	G	3
Cisco.....	N	5
Clahoquot Sound, P. O.....	I	6
Clan William.....	O	5
Clearwater, Lakes.....	O	3
Clearwater, River.....	T	4
Clinton, P. O.....	N	4
Cluscus, Lake.....	K	2
Cobble Hill.....	L	7
Cochrane.....	U	4
Collins, Point.....	G	2
Columbia, River.....	P	7
Colwood, P. O.....	L	7
Comaplix.....	R	5
Comox, P. O.....	K	6
Comox, R. R.....	K	6
Cook, Cape.....	G	5
Cormorant, Island.....	I	5
Cortez, Island.....	K	5
Cowdung, Lake.....	Q	3
Cowgitz Coal Mines.....	C	2
Cowichan, Lake.....	K	7
Cowichan, P. O.....	K	7
Craecroft, Island.....	I	5
Craigelachie, P. O.....	Q	4
Crossfield.....	V	4
Crown, Mt.....	J	6
Crow's Nest, Pass.....	U	6

Telephone 303

P. O. Box 373

# JOHN LECKIE

—IMPORTER OF—

**Fishing Nets and Twines, Cotton Ducks  
and Drills, Cotton and Manilla Ropes.**

*Agent for: W. & J. Knox, Kilbirnie, Scot.; Canadian Rubber  
Co., Montreal, Que.; Canadian Oiled Clothing Co., Port Hope, Ont.*

**RUBBER GOODS AND OILED CLOTHING.**

Toronto Warehouse, 9 Church St. Vancouver Warehouse, 632 Granville St.

P. O. Box 96

Telephone 109

## The Vancouver Floral Company

JAMES PONT, Manager.

**Greenhouses: Corner of Burrard and Melville Sts.**

Flowers, Bouquets, Sprays and Funeral Designs made up of Choice Cut Flowers  
on the shortest notice at all seasons of the year. Decorative and  
Window Plants always in Stock at Reasonable Prices.

**Cut Roses and Carnations a Specialty**

**At the VANCOUVER FLORAL COMPANY.**

## Sheasgreen & Co.

**- HATTERS -**

And Importers of all Kinds of Men's Goods. -- Specialties in  
Underwear, Hosiery, Shirts, Gloves and Neckwear.

Letter Orders always receive our Best Attention.  
Goods sent C. O. D., subject to approval.

**397 Hastings Street, VANCOUVER, B. C.**

## G. A. ROEDDE

**Practical Bookbinder**

**Manufacturing Stationer, Paper Ruler  
and Blank Book Maker**

**All Kinds of Account Books Kept in Stock**

**Horne Block, Cambie St. Vancouver, B. C.**

NEAR CORDOVA.

Telephone 263.



on Ducks  
illa Ropes.

Hope, Ont.

632 Granville St.

Telephone 109

any

ville Sts.

Choice Cut Flowers  
Decorative and  
Prices.

MPANY.

Go.

Specialties in  
Neckwear.

ntion.  
al.

DUVER, B. O.

E

ookbinde

aler

In Stock

ouver, B. O.

Daisy, Lake.....	M	5
Dawson.....	R	5
Deans, Channel.....	H	3
Decker, Lake.....	J	1
Denman, Island.....	K	6
Denman Island, P. O.....	K	6
Denny, Island.....	G	3
Devil's, Lake.....	T	4
Dickson, Lake.....	J	6
Didsbury.....	V	4
Digby, Island.....	E	1
Dirt, Lake.....	T	2
Discovery, Pass.....	J	5
Dog Creek, P. O.....	M	4
Dog Pound, Creek.....	U	4
Donald, P. O.....	R	4
Drift Pile, Camp.....	R	1
Drynock.....	N	5
Ducks.....	P	5
Duncan, Lake.....	R	5
Duncan, City.....	R	5
Duncans.....	L	7
Dundas, Island.....	E	1

Eburne.....	M	6
Eclipse, Narrows.....	I	4
Edmonton, P. O.....	V	2
Eldon.....	T	4
Elk, River.....	T	6
Elwyn, Lake.....	I	1
Empire Valley, P. O.....	M	4
Enderby, P. O.....	P	5
Eootall, River.....	F	1
Esperanza, Inlet.....	H	6
Esquimalt, P. O.....	L	7
Esquimalt & Nanaimo, R. R.....	L	7
Estevan, Island.....	F	2
Eutsuk, Lake.....	I	2
Evansport.....	R	5

Fairhaven, P. O.....	M	7
Fairview, P. O.....	P	6
Fallen Timber, Creek.....	T	4
Fidalgo, Island.....	M	7
Field, P. O.....	S	4
Flathead, Lake.....	U	8
Flattery, Cape.....	K	7
Flores, Island.....	I	6
Fort Colville.....	R	7

# A. A. BOAK & CO.

## Mining Brokers

### Real Estate, Insurance and Financial Agents.

Mineral Claims Purchased and Sold on Commission.

FIRE, ACCIDENT AND LIFE INSURANCE,  
BUILDING LOANS, GUARANTEE  
BONDS.

#### SPECIAL ATTENTION

Given to the Management of Property for Non-Residents. Agencies  
in principal cities and towns in the Province.  
Correspondence Solicited.

*Codes used: Clough's, Moreing & Neal's and A.B.C.  
Cable Address: "Boak," Vancouver.*

P. O. Box 756.

**515 Hastings Street, Vancouver, B. C.**

DOERING &  
MARSTRAND  
BREWING CO.

Limited




Brewers and Bottlers of the well known Brands

## EXPORT BEER

ALEXANDRA LAGER  
AND  
PORTER

Specially Recommended.

Fort George.....	M	2
Fort McLeod, P. O.....	V	6
Fort Rupert.....	H	5
Fort Saskatchewan.....	V	2
Fort Simpson.....	E	1
Fort Steel, P. O.....	T	6
Fort St. James.....	K	1
Francais, Lake.....	I	1
Fraser, Lake.....	K	1
Fraser, River.....	M	4
Frederick, Arm.....	J	5
Gabriola Island, P. O.....	L	6
Galena.....	S	5
Galiano Island, P. O.....	L	7
Gambier, Island.....	L	6
Gardner, Channel.....	G	2
Georgia, Gulf or Strait.....	K	6
Gill, Island.....	F	2
Glacier, Lake.....	R	4
Glacier, P. O.....	R	4
Giscome, Portage.....	M	1
Goat, River.....	S	6
Gold, Creek.....	Q	4
Gold, Harbor.....	C	3
Gold, River.....	R	4
Gold Stream.....	L	7
Golden, P. O.....	S	4
Goose, Island.....	G	4
Goschen, Island.....	E	2
Graham, Island.....	C	2
Grand Forks.....	Q	6
Grand Fork, River.....	P	2
Grand Prairie, P. O.....	O	5
Grand Rapids.....	N	2
Granite Creek, P. O.....	O	6
Great Central, Lake.....	J	6
Great Northern, R. R.....	T	7
Green, Lake.....	M	5
Green, Lake.....	N	4
Greenwood.....	Q	6
Gribbell, Island.....	F	2
Griffin, Lake.....	Q	5
Grohman.....	T	5
Guichon, P. O.....	L	6
Guilford, Island.....	I	5
Gull, Lake.....	U	3

Agents.  
 ssion.  
 URANCE,  
 FEE  
 ts. Agencies  
 e.  
 A.B.C.  
 ver, B. C.  
  
 R  
 ER  
 TER

# How to Find A GOLD MINE!

NO ROYAL ROAD.  
NO TRAILS CARRY YOU THERE.  
NOT EVEN THE TRUSTY CAYUSE  
CAN TAKE YOU TO THE SPOT.



"PROSPECTORS HAVE TO WALK."

- *You Want Boots* -

—AND—

# K Boots



**ARE  
THE  
BEST**

**SOLD THE WORLD OVER**

**COUNTRY K's  
WATERPROOF K's  
CITY K's  
PLIANT K's**

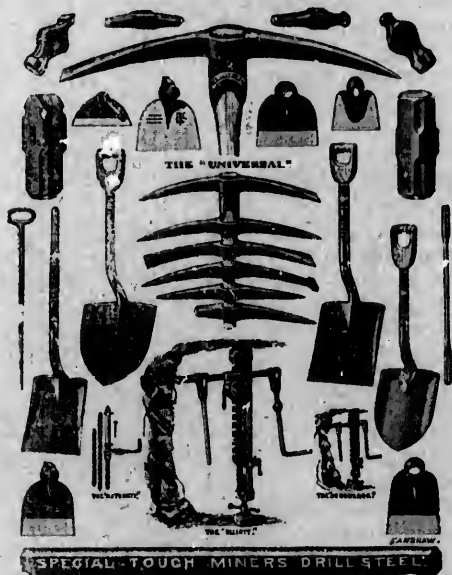
**J. A. PYKE,**

**518 Hastings Street.**

Hamilton .....	N	7
Hammond.....	M	6
Hanceville, P. O.....	L	3
Hardy, Bay.....	H	5
Harrison, Lake.....	N	6
Harrison Hot Springs, P. O.....	N	6
Harrison, River.....	N	6
Hastings, P. O.....	L	6
Hawkesbury, Island.....	F	2
Hecate, Strait.....	D	2
Hector, Mt.....	S	4
Henry, House.....	Q	3
Heshqueeat, Harbor.....	I	6
High River.....	V	5
Homalko, River.....	K	4
Hooker, Mt.....	Q	3
Hope, P. O.....	N	6
Hope, Island.....	H	5
Hornby, Island.....	K	6
Hornby, P. O.....	K	6
Horse, Lake.....	O	4
Horsefly, Lake.....	N	3
Hot Springs.....	R	5
Hotham, Sound.....	K	6
Howe, Sound.....	L	6
Howse, Pass.....	S	4
Houston Stewart, Channel.....	E	3
Hunter, Island.....	G	4
Huntington.....	M	6
Illicillewaet, P. O.....	R	4
Illicillewaet, River.....	R	4
Inhisfall.....	V	3
Iroquois, Village.....	P	3
Itcha. Mountains.....	J	3
Jasper, House.....	Q	2
Jasper, Lake.....	Q	2
Jennings.....	T	7
Jervis Inlet, P. O.....	L	6
Juan de Fuca, Strait.....	K	7
Juan Perez, Sound.....	D	3
Kamloops, P. O.....	O	5
Kananaskis.....	U	4
Kaniksu, Lake.....	S	7
Karmulsen, Mt.....	H	5
Kasco, River.....	L	2

# HIGH CLASS TOOLS

Of All Patterns  
For All Markets.



**PICKS, SHOVELS, FORKS, HOES  
AXES, HAMMERS, WEDGES,  
CROWBARS, ETC.**

Hand and Power Boring Machines for  
Rock and Coal.

**SPECIAL TOUGH DRILL STEEL.**

Disintegrating and Screening Machinery, and  
all Apparatus connected therewith.

**Hardy Patent Pick Company**

LIMITED.

**SHEFFIELD, ENG.**

Ka  
Ke  
Ke  
Ke  
Ke  
Ke  
Ke  
Kil  
Kil  
Kin  
Kin  
Kit  
Kit  
Kla  
Kla  
Kle  
Kle  
Klu  
Klu  
Kin  
Koc  
Koc  
Koc  
Koc  
Kot  
Kyr  
Kyu  
  
Lac  
Lac  
Lac  
Lad  
Lag  
La  
Lak  
Lan  
Lan  
Lar  
Lar  
Las  
Law  
Lea  
Led  
Leth  
Ligh  
Lill  
Lill  
Lill  
Litt

Kaslo, P. O.....	R	6
Keefers .....	N	5
Keithley Creek, P. O.....	N	3
Kelowna, P. O.....	P	6
Kennedy, Island .....	E	1
Keremeos, P. O.....	P	6
Kettle, River .....	Q	6
Kildahlah, Arm.....	G	2
Killarney.....	Q	6
King, Island.....	H	3
Kingcombe, Inlet.....	I	5
Kitlobe, River .....	H	2
Kitsum Gallum, Village.....	G	1
Kla-ai-ic, River.....	I	5
Klaskinough, Inlet.....	G	5
Kleenakleen, River.....	J	4
Klewnuggle, Inlet.....	F	2
Clue Oil Works.....	D	2
Klutze.....	G	2
Knight, Inlet.....	J	5
Kootenai.....	S	7
Kootenay, Lake.....	S	6
Kootenay, River.....	T	6
Kootenay Trading, Point.....	T	7
Kotimat, River.....	G	1
Kymana, River .....	H	2
Kyuquot, Sound .....	H	6
Lac des Roches.....	O	4
Lac la Noune.....	U	2
Lacombe .....	V	3
Ladners.....	M	6
Laggan.....	S	4
La Hache, Lake.....	N	4
Lake la Hache, P. O.....	N	4
Langley.....	M	6
Langdon.....	V	5
Lardeau.....	Q	5
Lardo.....	R	5
Lasquett, Island .....	K	6
Lawn Hill.....	D	2
Leancoil.....	S	4
Leduc.....	V	2
Lethbridge, P. O.....	V	6
Lightning, Creek.....	M	2
Lillooet, Lake.....	M	5
Lillooet, P. O.....	N	5
Lillooet, River.....	M	6
Little Bow, River.....	V	5

OLS

HOES  
GES,

es for

EL.

nery, and  
with.

pany



H. DEMPSEY

W. HODSON

# Hotel Metropole

HODSON & DEMPSEY, Props.



- HEADQUARTERS FOR COMMERCIAL MEN. -

Rates: \$2.00 per Day and upwards.

Corner of Cordova and Abbott Streets,  
VANCOUVER, B.C.



L  
 L  
 L  
 L  
 L  
 L  
 L  
 L  
 Lu  
 Lu  
 Ly  
 Ly  
 Ly  
 Ma  
 Ma  
 Ma  
 Ma  
 Ma  
 Ma  
 Ma  
 Ma  
 Ma  
 Mas  
 Mas  
 Mal  
 McC  
 McI  
 Med  
 Mid  
 Met  
 Milb  
 Mill  
 Min  
 Miss  
 Mito  
 Mito  
 Mob  
 Moo  
 More  
 Mor  
 Mos  
 Moy  
 Mud  
 Mur  
 Mus



Little Dalles.....	R	7
Little Red Deer, River.....	U	4
Little Smoky, River.....	R	1
Long, Bay.....	J	7
Long, Lake.....	P	5
Loone, Lake.....	N	4
Lopez, Island.....	M	7
Loughborough, Inlet.....	J	5
Lcuise, Island.....	D	3
Lowes, Inlet.....	F	2
Lulu Island.....	L	6
Lunds, P. O.....	K	6
Lyell, Island.....	D	3
Lych, Lake.....	H	3
Lytton, P. O.....	N	5
Mable, Lake.....	Q	5
Mahood, Lake.....	O	4
Malcolm, Island.....	I	5
Maligne, River.....	R	3
Malacca, Passage.....	E	1
Marcus.....	R	7
Martin's.....	P	5
Martin's, Range.....	K	4
Masset, H. B. Post.....	C	1
Masset, Sound.....	C	1
Malaspina, Strait.....	K	6
McCauley, Island.....	E	2
McLeod, River.....	S	2
Medicine, River.....	U	3
Midway.....	Q	6
Metlahkatlah.....	E	1
Milbank, Sound.....	G	3
Millet.....	V	2
Mineral, City.....	R	6
Mission, City.....	M	6
Mitchell's, Creek.....	N	3
Mitchell's, Lake.....	N	3
Moberly.....	S	4
Moose, Lake.....	P	3
Moresby, Island.....	D	3
Morley.....	U	4
Mosquito, River.....	V	5
Moyie, Lake.....	T	6
Mud, River.....	L	2
Murchison, Mt.....	S	4
Mussel, Inlet.....	G	3

W. HODSON

ole



MEN.

rds.

Streets,

# Music! Music!

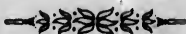


For Touch, Tone, Action  
and Workmanship, the  
· D. W. ·

## = KARN =

**Is Unexcelled**

In Canada to-day, and pronounced by the Most  
Eminent Musicians to exemplify the Highest  
Art in Piano Manufacture.



## DYKE & EVANS

· AGENTS ·

Catalogues Forwarded to any Address

· MUSIC ·

For Instruments kept in Stock. Also a Full  
Line of Instruction Books, as well as the  
Largest Assortment of Vocal Music  
in British Columbia.

**Banjo, Guitar and Violin Strings**

a Specialty, and a Full Line of all Musical  
Instruments.

Write to

**DYKE & EVANS,**  
**The Arcade Music Store**  
**Vancouver, B. C.**

Nadin, Harbor.....	C	1
Nadina, Mt.....	H	1
Nakusp, P. O. ....	R	5
Namu, Harbor.....	H	4
Nanaimo, P. O.....	L	6
Nanaimo, River.....	K	6
Na-tal-kuz.....	J	2
Nichaco, River.....	K	1
Nelson, Island.....	K	6
Nelson, P. O.....	R	6
New Denver, P. O.....	R	6
New Westminster, City.....	L	6
Niagara, Lake.....	O	3
Nicola, Lake.....	O	5
Nicola, P. O.....	O	5
Nicomén.....	N	6
Nimkish, Lake.....	I	5
Nitinat, Lake.....	K	7
Nootka, Sound.....	I	6
North, Harbor.....	G	5
North, Island.....	C	1
North Bend, P. O.....	N	6
Northern Pacific R. R.....	S	8
North Thompson, River.....	O	4
Northport.....	R	7
Notch Hill.....	P	5
Numas, Island.....	H	5
Okanagan, Lake.....	P	5
Old Colville.....	O	7
Oldman, River.....	R	2
Old Man's, River.....	V	6
Olds.....	V	4
Olympian, Range.....	K	7
Ootsa, Lake.....	I	2
Orcas, Island.....	M	7
Osooyos, Camp.....	P	6
Ottertail, P. O.....	S	4
Otoskwan.....	V	2
Ou-oukinsh, Inlet.....	H	5
Outhill.....	T	4
Palliser.....	S	4
Palliser, River.....	T	5
Pavillon, P. O.....	N	4
Pembina, River.....	T	2
Pend d'Oreille, Lake.....	S	7
Pend d'Oreille, River.....	R	7
Penny's.....	O	5

sic!

the Most  
Highest

NS

ess

Also a Full  
as the  
music

strings

al

Store



Penticton, P. O.....	P	6
Phillip's, Arm.....	J	5
Pigeon, Lake.....	U	2
Pilot, Bay.....	S	6
Pitt, Island.....	E	2
Plumper Pass, P. O.....	L	7
Poison, Cove.....	G	2
Ponka.....	V	3
Porche, Island.....	E	2
Port Angeles.....	L	7
Port Crescent.....	L	7
Port Essington.....	F	1
Port Fraser.....	K	2
Port Moody, P. O.....	M	6
Port Neville, P. O.....	I	5
Port San Juan.....	K	7
Port St. John.....	H	3
Port Townsend, P. O.....	M	7
Powell, Island.....	K	5
Prairie, Creek.....	T	3
Prevost, Island.....	E	3
Price, Island.....	G	3
Princess Louise, Inlet.....	L	5
Princess Royal, Island.....	G	2
Princeton, P. O.....	O	6
Principe, Channel.....	E	2
Puget, Sound.....	M	7
Punta-ten Cut, Lake.....	L	3
Puntildenay, Mountains.....	H	2
Quamichan.....	L	7
Quanchus, Mountains.....	I	2
Quattah, Glaciers.....	F	1
Quatsino, Sound.....	G	5
Queen Charlotte, Islands.....	D	3
Queen Charlotte, Sound.....	H	5
Queen's, Sound.....	G	4
Queenstown.....	G	5
Quesnelle, Lake.....	N	3
Quesnelle, River.....	M	3
Quesnelle Forks, P. O.....	N	3
Quesnelle Mouth, P. O.....	M	3
Radnor.....	U	4
Ramsay, Island.....	D	3
Ramsay, Arm.....	K	5
Red Deer, P. O.....	U	3
Red Deer, River.....	U	4
Revelstoke, P. O.....	C	4

River

Scales,

Is,

Manufactured  
we can, suitable  
carried in  
B. C.

E CO.

OVER



Richfield.....	N	2
Rivers, Inlet.....	H	4
Robson.....	R	6
Roche, Harbor.....	M	7
Rocky Mountain, House.....	T	3
Roderick, Island.....	G	3
Roger's Pass.....	R	4
Rose Spit.....	D	1
Rosario, Strait.....	M	7
Rosebud, River.....	V	4
Rossland, P. O.....	O	6
Ruby, Creek.....	N	6
Rupert, Arm.....	H	5
Salmo.....	R	6
Salmon, Arm.....	P	5
Salmon, River.....	K	5
Salmon, River.....	L	1
Salt Spring Island, P. O.....	L	7
Sandon, P. O.....	R	6
San Juan.....	L	7
Sarah, Island.....	G	3
Saskatchewan, River.....	S	3
Savonas, P. O.....	O	5
Scott, Cape.....	G	5
Scott, Island.....	G	5
Seaford, Channel.....	G	3
Seattle.....	M	8
Sedro.....	M	7
Semour, Creek.....	Q	4
Seschell, Inlet.....	L	6
Seton, Lake.....	M	5
Seymour, Creek.....	Q	4
Seymour, Inlet.....	H	4
Shawnigan Lake, P. O.....	L	7
Shelter, Bay.....	H	5
Shuswap, Lake.....	P	4
Shuswap, P. O.....	P	5
Sicamous, P. O.....	Q	5
Sidney, Inlet.....	I	6
Sidney, P. O.....	L	7
Silver, City.....	T	4
Silverton.....	R	6
Sir Donald, Mt.....	R	4
Skagit, River.....	N	7
Skeena, P. O.....	F	1
Skeena, River.....	F	1
Skidegate, Channel.....	C	2
Skidegate, Inlet.....	D	2

Co.

TORY

uses of the  
villages.

with distance  
communications,

o, Nanaimo,  
e, Rossland,

ortant feature

IA.

ining and  
rustees, head  
properties, with  
to their state

ree Miners,  
work will also  
ning, brought

is compiled in  
ectories during  
al performance

edia } \$5

..... \$5.00

actory 5.00

..... 2.50

..... 3.00

actory. 2.00

Co.

# *A. W. More & Co.*

**Mining and  
Stock Brokers**

**Real Estate and Insurance Agents**

86 Government Street

**VICTORIA, B. C.**

---

## Mining Shares for Sale.

10,000 Consolidated Alberni.....	at 20c
10,000 Mineral Hill, Alberni.....	at 5c
20,000 Victoria-Texada, Texada Island,	at 25c
2,000 Golden Cache, Lillooet.....	at \$2
20,000 Argo, Slocan.....	at 10c
2,000 Rambler-Cariboo, Slocan.....	at 45c
500 Slocan Star, Slocan.....	at \$2.40
2,000 St. Keverne, Slocan.....	at 4c
10,000 Consol. Sable Creek, Lardeau,	at 10c
10,000 Kamloops Copper Co., Kaml'ps,	at 10c
10,000 Winchester, Fairview.....	at 75c
10,000 Monte Cristo, Rossland.....	at 20c
10,000 Norway, Rossland.....	at 10c

---

**A. W. MORE & CO.**

**86 Government St.**

**Victoria, B. C.**



Slocan, City .....	R	6
Smith, Island .....	E	1
Smith's .....	P	7
Smith's Sound .....	H	4
Smoky, Peak .....	P	1
Smoky, River .....	P	1
Snake Indian, River .....	Q	2
Soda Creek, P. O. ....	M	3
Sooke, Harbor .....	L	7
Sooke, P. O. ....	L	7
South Bentick, Arm. ....	H	3
Southgate, River .....	K	5
South Kootenay, Pass. ....	U	6
Spanish, Lake .....	N	3
Spatsum .....	N	5
Spence's .....	N	5
Spillemacheen, P. O. ....	P	5
Spillemacheen, River .....	P	5
Spokane, City .....	R	8
Spuzzum .....	N	6
Squamish, P. O. ....	L	6
Stanley .....	N	2
St. Ann, Lake .....	U	2
St. Ann, Mission .....	U	2
Stephen .....	S	4
Stephen, Island .....	E	1
Steveston, P. O. ....	L	6
Stillwater, Lake .....	N	3
St. James, Cape .....	E	4
St. Joseph, Bay .....	G	5
St. Mary, Lake .....	S	6
Strathmore .....	V	5
Stuart, Lake .....	K	1
Sugar, Creek .....	N	2
Sumas, City .....	M	7
Summit, Lake .....	M	1
Swamp, River .....	N	3
Swansea .....	T	6
Swanson, Bay .....	G	2
Swindle, Island .....	G	2
Tahwowtee, Bay .....	J	4
Tahsoo, Harbor .....	C	3
Takush, Harbor .....	H	4
Tasego, River .....	L	4
Tatla, Lake .....	K	3
Tatlayoco, Lake .....	K	4
Tatusch, Island .....	K	7
Tchesinkul, Lake .....	J	1

Co.

s  
Agents

heet

Sale.

....at 20c

....at 5c

land, at 25c

....at \$2

....at 10c

....at 45c

....at \$2.40

....at 4c

eau, at 10c

h'ps, at 10c

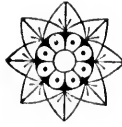
....at 25c

....at 20c

....at 10c

20.

ria, B. C.



# The Williams Directory Co.

Limited Liability

## PUBLISHERS

• • Victoria, B. C.



This is what the Press said of  
the Williams B. C. Directory.

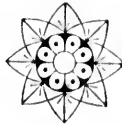
1882:

*The best Directory in the Dominion.*

—*Toronto Mail.*

*The work far exceeds the limits of an  
ordinary Directory.*

—*Liverpool (Eng.) Daily Post.*



T  
T  
T  
T  
T  
T  
T  
T  
T  
T  
T  
U  
V  
Va  
Va  
Va  
Va  
Va  
Va  
Ve  
Ve  
Vic  
W  
We  
We  
We  
Wh  
Wh  
Wh  
Wh  
Wh  
Wh  
Will  
Will  
Win  
Win  
Woo  
Wor

Teta-chuck, Lake.....	J	2
Telegraph, Range.....	L	2
Tete Jaune Cache.....	P	3
Texada, Island.....	K	6
Texada, P. O.....	K	6
Thompson.....	N	5
Thompson, River.....	O	4
Thompson, Sound.....	I	5
Three Forks.....	R	5
Tideman, Glacier.....	J	4
Tipella, P. O.....	M	6
Tobacco Plains, P. O.....	T	7
Tokwaht, Harbor.....	J	7
To-tuk, Lake.....	K	2
Trail.....	R	6
Tranquille.....	O	5
Trout Lake, City.....	R	5
Tzeu-zeu-cut, Lake.....	L	3
Union, Mine.....	K	6
Valdez, Island.....	J	5
Valdez, P. O.....	L	6
Vancouver, City.....	L	6
Vancouver, Island.....	J	6
Van Winkle, P. O.....	N	2
Vargas, Island.....	I	6
Vernon, Lake.....	I	5
Vernon, P. O.....	P	5
Victoria, City.....	L	7
Wakeman, Sound.....	I	4
Wellington, P. O.....	K	6
Westminster, Junction.....	M	6
Wetaskewan.....	V	2
Wharnock... ..	M	6
Whatcom, P. O.....	M	7
Whidby, Island.....	M	7
White, Lake.....	U	2
White Man's, Pass.....	T	5
White, River.....	I	5
Williams, Lake.....	M	3
Willow, River.....	M	3
Windermere.....	T	5
Winter, Harbor.....	G	5
Wood, River.....	Q	3
Work, Channel.....	E	1

Co.

B. C.

n.  
to Mail.

of an

ily Pest.

—THE—

Brackman & Ker

- Milling Co. -

Limited

OPERATING THE LARGEST

Breakfast Food Mills

· IN CANADA ·

Rolled Oats, Oatmeal, Cornmeal,  
Pearl Barley, Split Peas, Etc.,  
Specially put up for the Klondike Trade.

NATIONAL MILLS

VICTORIA

VANCOUVER

WESTMINSTER

EDMONTON

Next to

Woss, Lake.....I 5  
 Wreck, Bay.....J 7  
 Yale, P. O.. ... N 6  
 Yellow Head, Pass.....Q 3  
 Zymoetz. River.....G 1  
 150-Mile, P. O.....N 3

# J. G. Campbell - New York Tailor



Up to Date.                      300 years ago.



## LARGEST TAILORING ESTABLISHMENT

IN BRITISH COLUMBIA.

Next to Arcade Building, Cambie Street,

VANCOUVER, B. C.

# Pacific Coast Steamship Co.

Runs over 20 steamers and operates them to all important coast ports, from Mexico on the south to Alaska on the north, both inclusive. For exact dates of sailing see the Company's folder.

The following are the different routes operated by this Company, viz. :

## THE ALASKA ROUTE.

Steamers leave Puget Sound ports and Victoria, B. C., about every fifth day for all ports in south-eastern Alaska.

## PORTLAND-ALASKA ROUTE.

The steamer George W. Elder sails from Portland for ports in Alaska about every eighteenth day.

## SAN FRANCISCO-PUGET SOUND ROUTE.

Steamers sail from San Francisco for all ports on Puget Sound, and also for Victoria and Vancouver, B. C., every fifth day, connecting with the Alaska steamers at Seattle.

## SAN FRANCISCO-PORTLAND (Ore.) ROUTE.

This route is operated jointly by the Pacific Coast Steamship Company and Oregon Railway & Navigation Company. Steamers sail every fifth day, connecting at Portland with steamer Geo. W. Elder for ports in Alaska.

## SAN FRANCISCO-EUREKA (Humbolt Bay) ROUTE.

The Company's steamers sail on this route every fourth day.

## SAN FRANCISCO-SAN DIEGO ROUTE.

The Company's steamers sail every fourth day from San Francisco, calling at San Luis Obispo, Santa Barbara, Los Angeles and San Diego.

## SAN FRANCISCO-NEWPORT ROUTE.

The Company's steamers sail every fourth day, calling at Newport, San Pedro and a large number of intermediate ports.

## SAN FRANCISCO-MEXICAN ROUTE.

The Company's steamers sail monthly, viz., on the 2nd of each month, for Mazatlan, Guaymas, Ensenada and other intermediate parts.

Further information can be obtained regarding dates of sailing, rates of fare, freight, etc., by inquiring at any of the Company's offices. For list of same see the Company's regular folder.

The Company issues two folders: one of them is a large folder, which contains a map of the whole coast from Mexico to Alaska (postage, 2 cents); the other is a folder of the Alaska Route, with map (by Prof. Davidson) of all Alaska, including the Klondike, showing the different passes, and containing a lot of valuable information to miners and others (postage, 2 cents). The Company also issues the following publications, viz.: "How to Reach the Gold Fields of Alaska," which publication contains full information regarding miner's outfit, together with details of the trip, the output of different districts and various and sundry information valuable to miners (postage, 2 cents); also, "How to Reach the Klondike: Answers to Every-Day Queries" (postage, 2 cents); also, "North and South," a pamphlet of 76 pages, finely illustrated (postage, 5 cents). Any of these publications can be obtained free upon application, or will be mailed to any address on receipt of postage.

Portland Office, 146 Third St., N. Poston, Agent.  
Seattle Office, Ocean Dock, J. F. Trowbridge, P. S. Supt.  
Juneau Office, Steamship Dock, H. F. Robinson, Alaska Supt.  
Los Angeles Office, 124 West Second St., W. Parris, Agent.  
San Francisco Ticket Office, No. 4 New Montgomery St.  
Victoria Office, R. P. Rithet & Co. (Ltd.)

## GOODALL PERKINS & CO.,

General Agents, No. 10 Market St.,

San Francisco.

# C. P. Navigation Company

LIMITED.

## TIME TABLE No. 31

Takes effect November 18th, 1897.

### VANCOUVER ROUTE.

VICTORIA TO VANCOUVER—Daily, except Monday, at 1 o'clock.

VANCOUVER TO VICTORIA—Daily, except Monday, at 13.15 o'clock, or on arrival of C. P. R. No. 1 train.

### NEW WESTMINSTER ROUTE.

LEAVE VICTORIA for New Westminster, Ladner's Landing and Lulu Island—Sunday at 23 o'clock; Wednesdays and Fridays at 7 o'clock. Sunday's steamer to New Westminster connects with C. P. R. Train-No. 2 going East Monday.

For Plumper Pass—Wednesdays and Fridays at 7 o'clock.

For Moresby and Pender Islands—Friday at 7 o'clock.

LEAVE NEW WESTMINSTER for Victoria—Monday at 13.15 o'clock; Thursday and Saturday at 7 o'clock.

For Plumper Pass—Thursday and Saturday at 7 o'clock.

For Pender and Moresby Islands—Thursday at 7 o'clock.

### NORTHERN ROUTE.

Steamships of this Company will leave from Evans, Coleman & Evans' Wharf, Vancouver, for Fort Simpson and intermediate points the 2nd and 16th of each month at 12 noon, and for Queen Charlotte Islands the 2nd of each month, except when these dates fall on Sunday, when they will leave on the 1st and 15th.

### BARCLAY SOUND ROUTE.

Steamer Tees leaves Victoria for Alberni and Sound ports the 15th and 30th of each month.

This Company operates steamers connecting with the various routes to the Yukon and Gold Fields.

The Company reserves the right of changing this Time Table at any time without notification.

JOHN IRVING, Manager.

C. A. CARLETON, General Agent.

Victoria, January 1st.

# Reconnaissance Transit

**A**S now made, the **Reconnaissance Transit** has outgrown its first place, and is in use among Miners and Mining Engineers in all parts of North America and in many parts of Central and South America as well.

Carefully designed, well finished and of first-class material throughout, it is giving the best of satisfaction, and new orders are constantly being received from parties who have seen the instrument in actual service and have proof of its quality.

## THE TELESCOPE

is erecting, achromatic, and is provided with both cross wires and stadia wires of platinum. The vertical circle reads to five minutes and is graduated sterling silver, as is also the horizontal limb which reads by one vernier to single minutes. The level under the telescope has a ground and graduated vial, and the clamp and tangent to axis of telescope has compensating springs, as have also the clamp and tangent movements to limb and to levelling-heads. The tripod has shifting centre and extension legs. The box is of mahogany, with lock and key, with carrying strap and with rubber bumpers to protect from shocks in transportation.

The illustration on the next page shows the instrument as ordinarily furnished, but the makers fit it, when so ordered, with all kinds of extras and attachments for special work, either over or under ground.

For full description of the **Reconnaissance Transit**, or for Catalogue and Price List of Civil Engineers' and Surveyors' Instruments, address

## W. & L. E. GURLEY,

Troy, New York, U. S. A.

The Largest Manufacturers of Civil Engineers'  
and Surveyors' Instruments in  
America.

logue  
address

The I



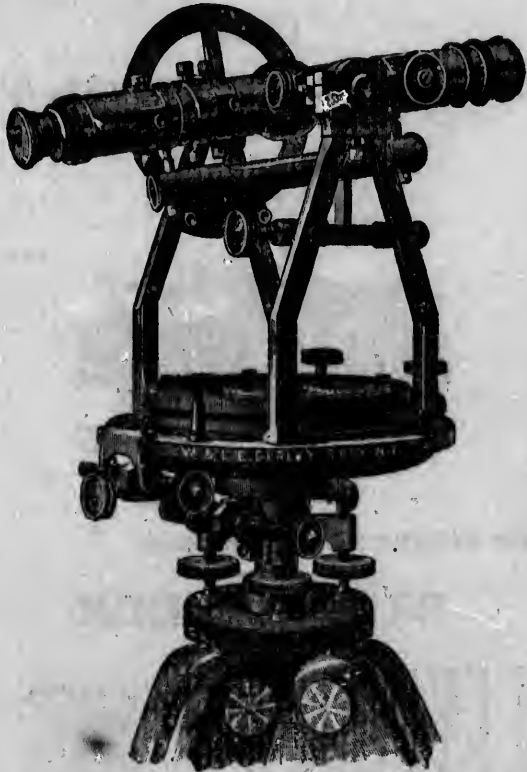
The Instrument shown herewith,

- No. 100, -

is named

# The Reconnaissance Transit

because it was originally designed and made for use  
where portability was more essential  
than extreme accuracy.



For full description of the Reconnaissance Transit, or for Catalogue and Price List of Civil Engineers' and Surveyors' Instruments, address

**W. & L. E. CURLEY,**

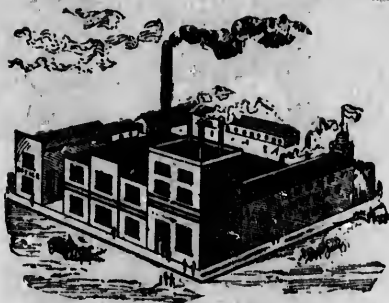
TROY, New York, U. S. A.

The Largest Manufacturers of Civil Engineers' and  
Surveyors' Instruments in America.

# Doering & Marstran Brewing Company

Limited.

————— VANCOUVER, B.



Brewers and Bottlers of the well known Brands

**EXPORT BEER**

**ALEXANDRA** LAGER  
AND  
PORTER

Specially Recommended.

rstran

pany

DUVER, B.



s

ER

AGER

AND

RTER

ed.

# THE MERCHANT

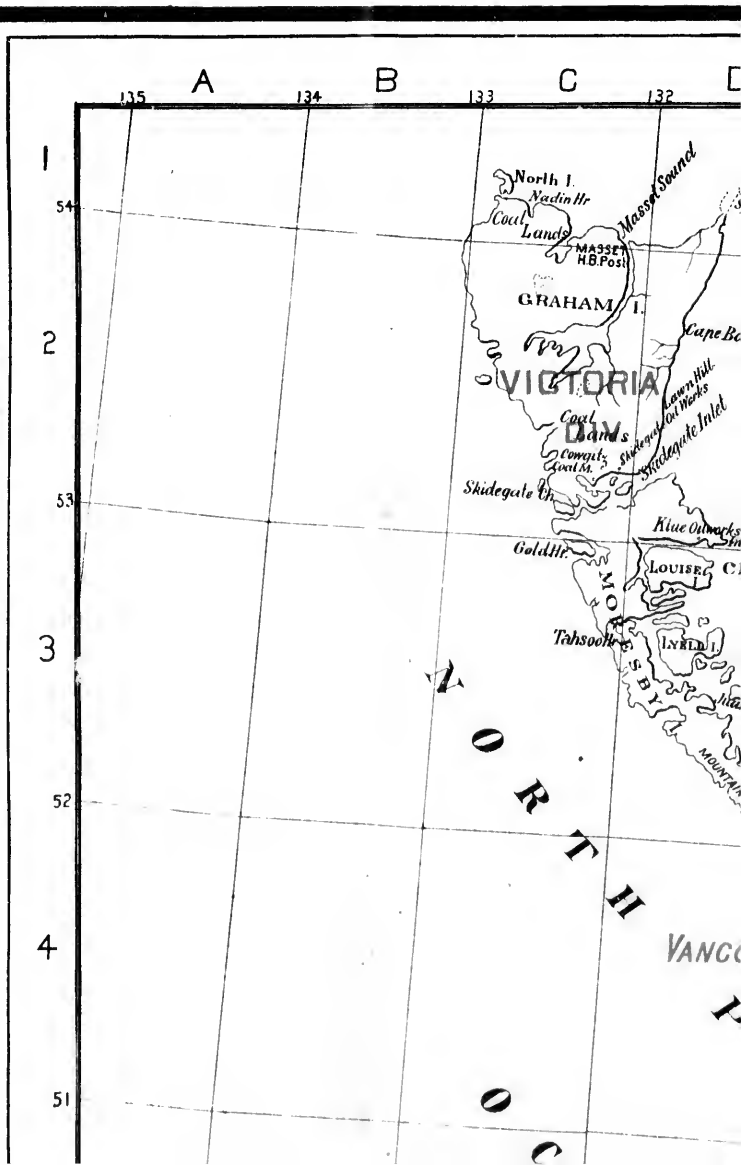
Capital Paid Up . . . \$1,000,000

HEAD OFFICE

Branches in the Provinces of Nova Scotia, New Brunswick and Prince Edward Island.

## BANKERS AND CORRESPONDENTS.

London, . . . . .	Bank of Scotland
Paris, . . . . .	Credit Lyonnais
Bermuda, . . . . .	Bank of Bermuda
New York, . . . . .	Chase National Bank
San Francisco, . . . . .	Hong Kong and Shanghai Banking Corporation
Boston, . . . . .	National Hide and Leather Bank
Chicago, . . . . .	American Exchange National Bank
China and Japan, . . . . .	Hong Kong and Shanghai Banking Corporation



# MERCHANTS' BANK OF

INCORPORATED 1869.

Capital Up - - \$1,500,000 Reserve Fund - -

HEAD OFFICE: HALIFAX, NOVA SCOTIA.

D. H. DUNCAN, - - - Cashier.

of Nova Scotia, New Brunswick, Prince Edward Island, Quebec and British Columbia,

AGENTS.

- Bank of Scotland
- Credit Lyonnais
- Bank of Bermuda
- Chase National Bank
- Banking Corporation
- Wool and Leather Bank
- Exchange National Bank
- Banking Corporation



A General Banking Business Transacted.

Sold. Letters of Credit, etc., Negotiated

on the most Favorable Terms.

BRANCHES IN BRITISH COLUMBIA

VANCOUVER, B.C.



# HALIFAX

\$1,075,000

...bia, and at St. Johns, Newfoundland.

l. Sterling Bills of Exchange Bought and Negotiated. Accounts Received Favorable Terms.

BRITISH COLUMBIA

VLSON, ; ROSSLAND.

"In the gr. Rockies, and be to say that it is old friends, the ment) that in no

"You can detected without get to the Carib to the pan. I lars to the pan are now being astonish even th

"But wh country un faved by the NEAR BAR from one claim,



## Extract of Report Delivered

"In the graves of all the streams of British Columbia, the Rockies, and between the 49th parallel and Cariboo, gold to say that it is found in every place in paying quantities, the old friends, the prospectors of gold-bearing gravel, will admit that in no stream or river can much dirt be washed away.

"You can start from the mouth of the Fraser and detect without a glass, and which may go one cent or more to the Cariboo, where the old-timers tell me that they get to the pan. I am afraid that these shallow diggings which are now being opened out by hydraulic methods will astonish even the old-timers."

"But what I want to bring to your notice is the fact that the country until three or four years ago made any attempt to be favored by the Californian hydraulic companies."

NEAR BARKERVILLE. "For the fabulous sums realized from one claim, but from dozens, I must refer you to the Government

## Delivered

Columbia by...  
 o, gold is to...  
 ities, but I...  
 s, will vouch...  
 washed with...  
 and can find...  
 at or one-tent...  
 at they often...  
 re to assert th...  
 will yield gold

is the fact th...  
 mpt to use

realized in...  
 the Governme



by J. M. Buxton,

of Vancouver, before the First Annual Meeting of the Northwest at Spokane, October, 1893, concerning the Auriferous Gravels of

between Vancouver and the  
to be found. I do not mean  
to assert (and most of my  
for the truth of my state-  
getting at least a color."  
gold too minute to be  
of a cent a yard, till you  
d several hundred dollars  
ould get hundreds of dol-  
the deep channels which  
in sufficient quantities to

we have never in this  
more improved methods

in one day or one week, not  
reports; and, at the same

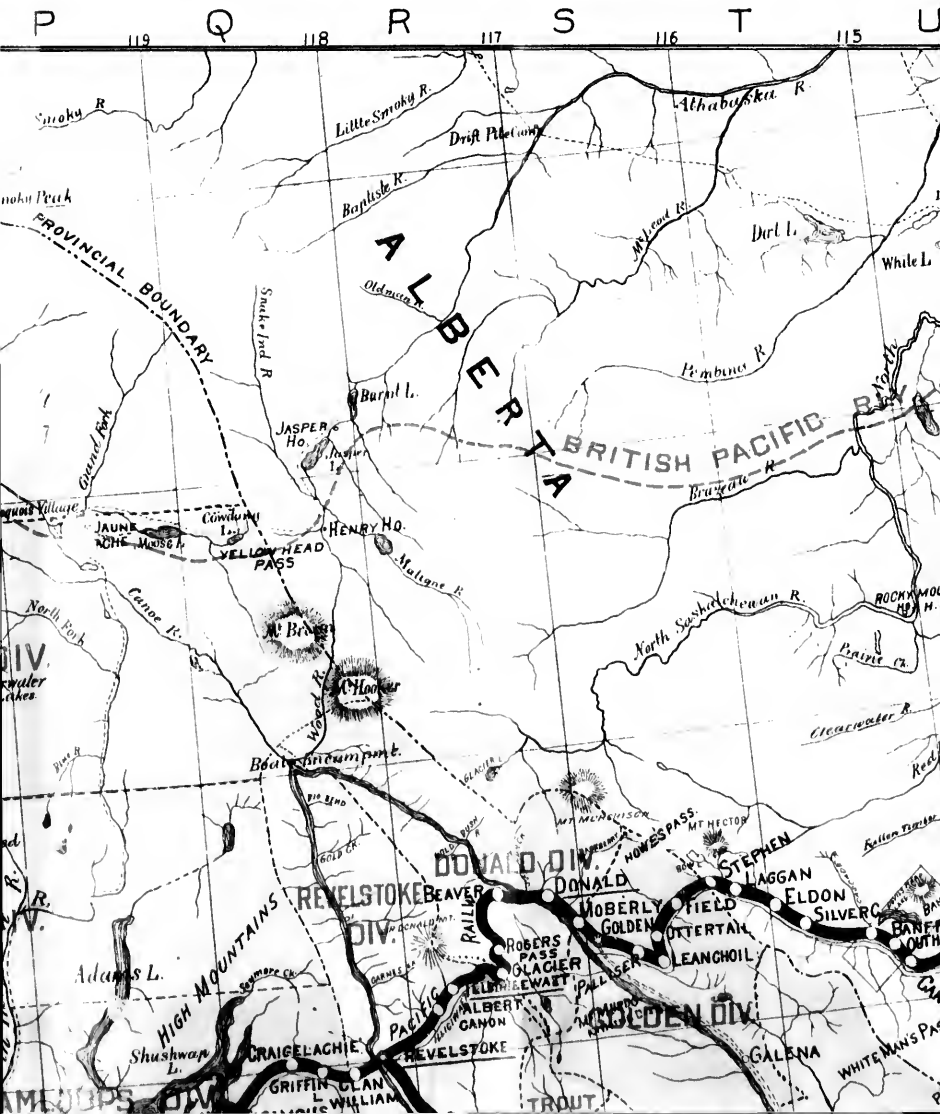
time, I must point out to you that many and many a  
out of the country without any official notice being  
I may state that it is my firm belief that the Chinese  
at the present time over a quarter of a million per a

"Out of this district and its surroundings I th  
turns, about sixty millions have been taken."

"Northwards again of both the Fraser and the  
districts, in which the prospector, who, by the w  
journey, can make good wages by rocking or show  
ports brought in by some of my men, I believe the g  
to be much richer than those in Cariboo."

"We are as yet only at the commencement of  
British Columbia, and I can assure you that we sha

The last extract is in the way of being verified  
the Province since this report was deliv





Meeting of the Northwest Miners' Association,  
 on the Auriferous Gravels of British Columbia.

... that many and many a hundred thousand dollars were carried  
 ... official notice being directed thereto. While on this subject  
 ... belief that the Chinese miners take out of the Forks district  
 ... arter of a million per annum."

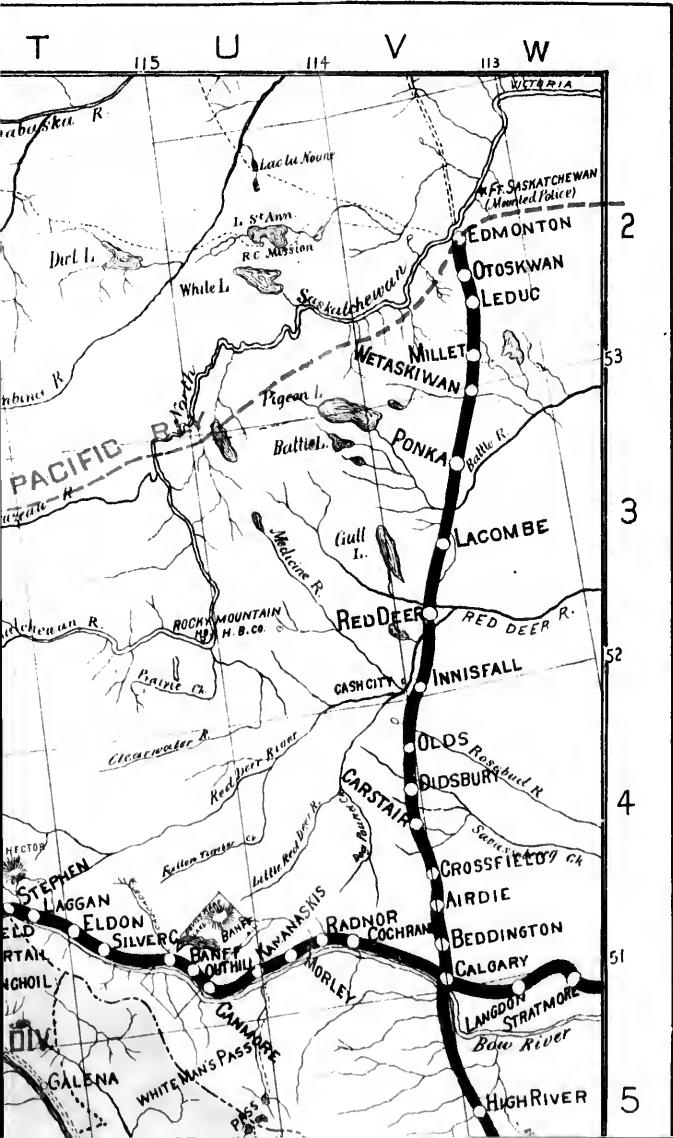
... and its surroundings I think, according to the Government re-  
 ... ve been taken."

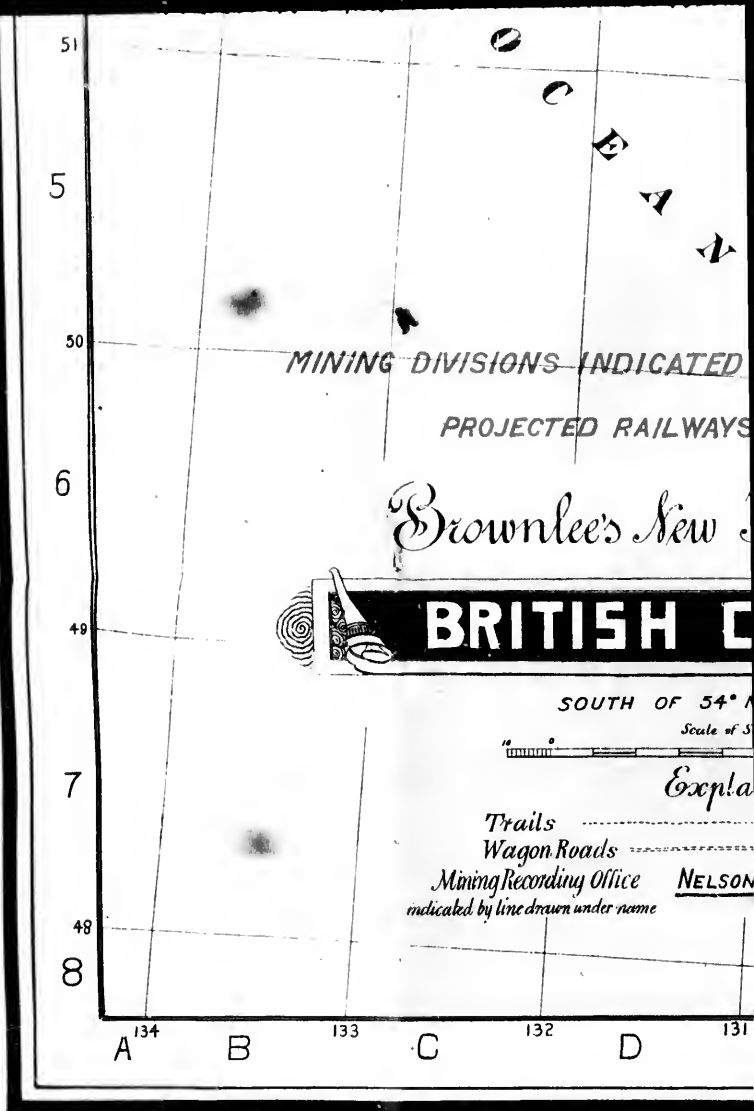
... both the Fraser and the Columbia are the Cassiar and Omineca  
 ... pector, who, by the way, must have plenty of grit for this  
 ... ges by rocking or shoveling into small sluices. From the re-  
 ... my men, I believe the gravel deposits suitable for hydraulicing  
 ... in Cariboo."

... the commencement of gravel mining by hydraulic methods in  
 ... assure you that we shall yet turn out millions."

... the way of being verified by works carried on in different parts of  
 ... t was deli c

J. M. BUXTON,  
 619 Granville Street, Vancouver, B. C.





PRINTED BY J. R. GRANT, VANCOUVER B.C.

**J. H. BRO**

*Dominion and Provincial*

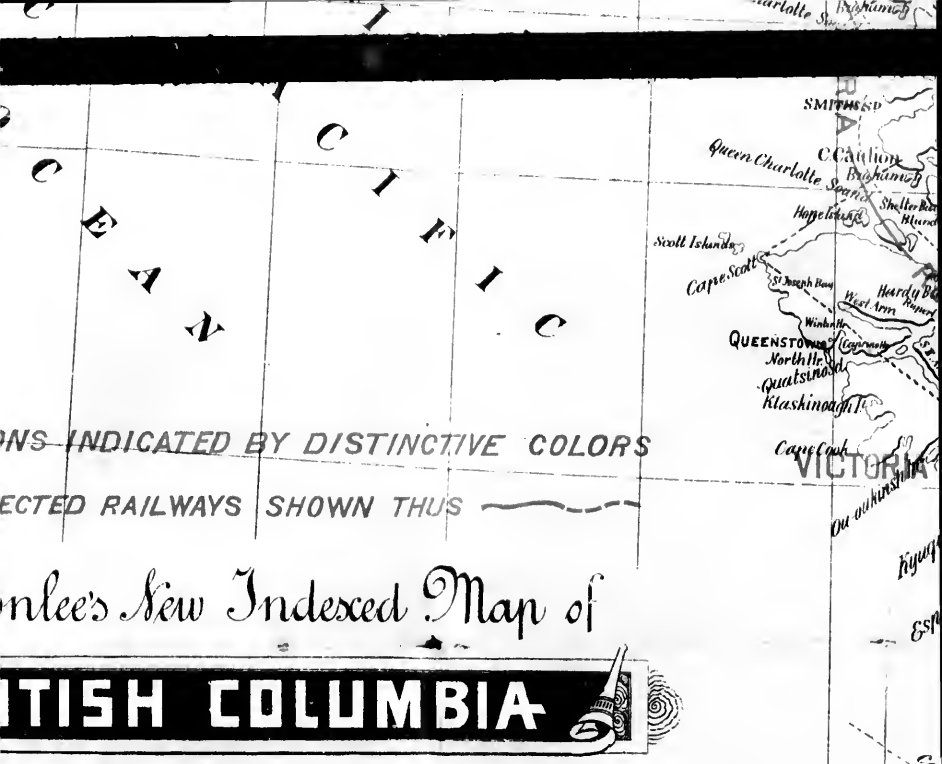
**TIMBER REPORTS.**

*Publisher of Brownlee's Hand-*

**BRITISH COLUMBIA MANAGER**

- - OF -




**ADDRESS: - ROOM 9, BANK C**



PLACES INDICATED BY DISTINCTIVE COLORS  
 PROTECTED RAILWAYS SHOWN THUS

Brownlee's New Indexed Map of  
**BRITISH COLUMBIA**

SOUTH OF 54° NORTH LATITUDE  
 Scale of Statute Miles.

**Explanations:**  
 Trails .....  
 Log Roads .....  
 Recording Office **NELSON**  
 (as drawn under name)  
 Railways:   
 Stations   
 Smelting Centres 

132 D 131 E 130 F 129 G 128 H

**C. E. BROWNLEE, C. E.,**  
 Provincial Land and Mine Surveyor

FOR REPORTS. MINE EXAMINATIONS.  
 Brownlee's Hand-book of British Columbia Mining Laws.  
 COLUMBIA MANAGER CORRESPONDENCE SCHOOL OF MINES,  
 - - OF SCRANTON, PA. - -

109, BANK OF B. N. A. BUILDING, VANCOUVER, B. C.



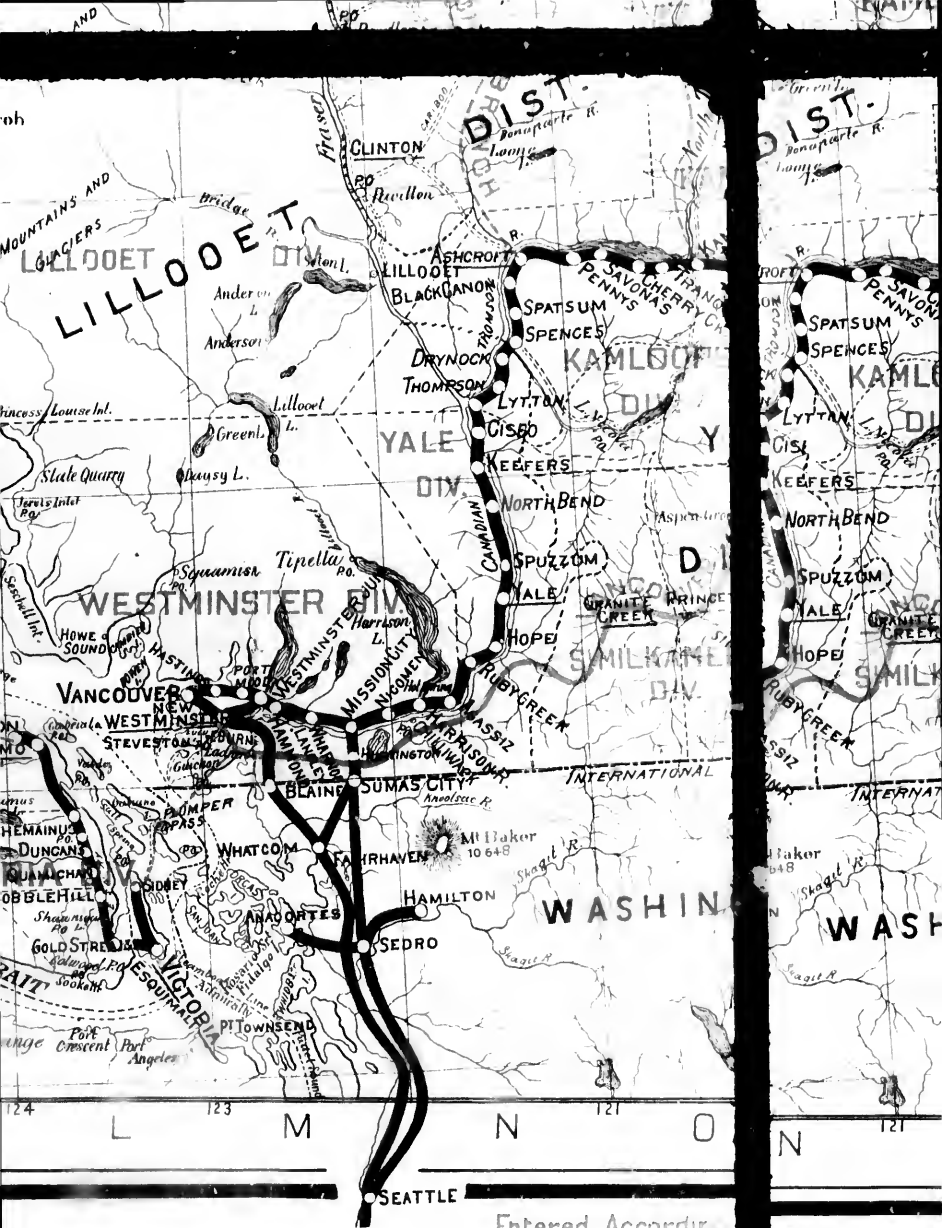
eyor



The C

As will be seen from this Map, affords  
Lines throughout t

, B. C.

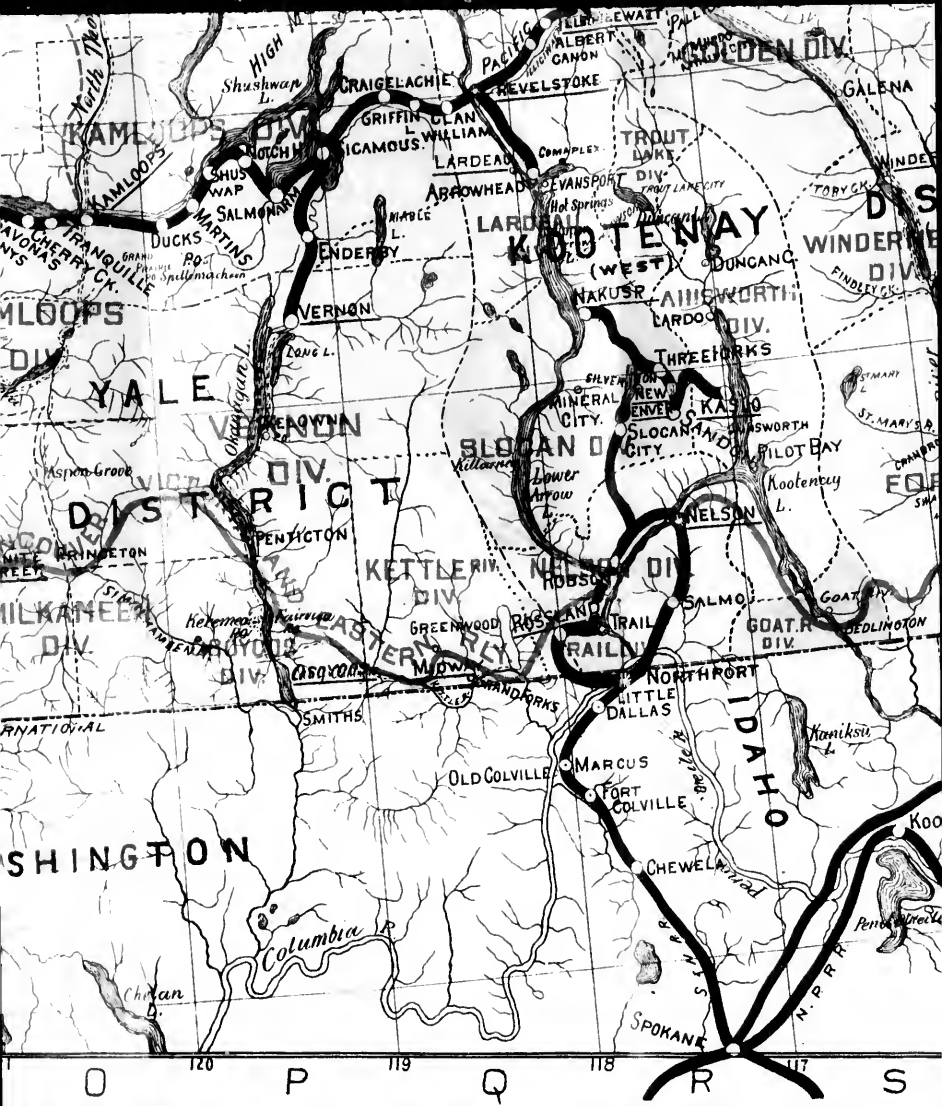


Entered According to Act of Congress

Entered According to Act of Congress

# The Canadian and American

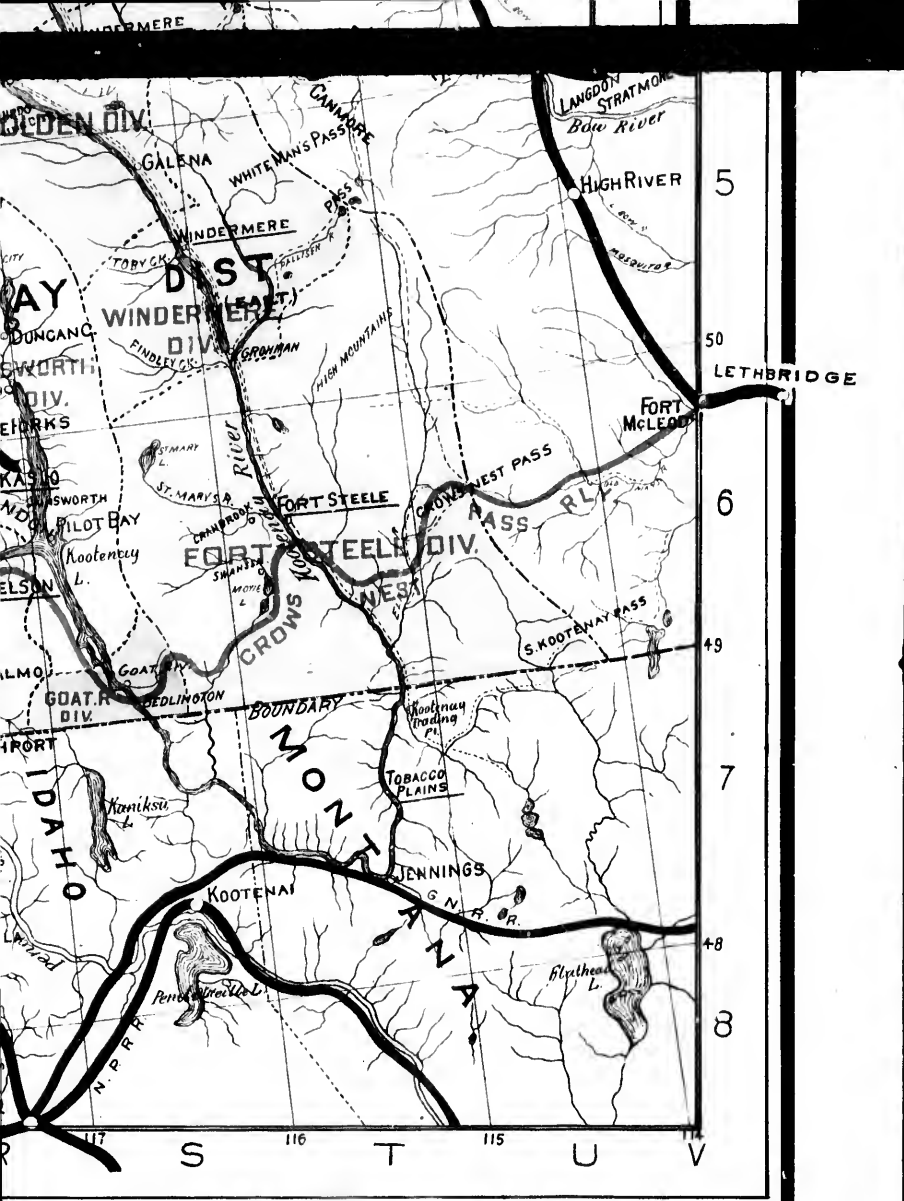
Map, affords the Best Route to the Fair...  
 throughout the Kootenay Mining District...  
 for parties coming...  
 parties coming...



According to Act of Parliament of Canada in the year 1898 by J.H. Brownlee at the

# Canadian Pacific Railway

to the Famed Kootenay and Cariboo Gold Fields. Having access to the Kootenay District, its geographical situation makes it the most convenient route for coming from the East or West.



by J.H. Brownlee at the Department of Agriculture.

# Railway



Fields. Having its own Rail and Steamer makes it the best route

15  
[Faint, illegible text]

[Large block of extremely faint, illegible text, possibly bleed-through from the reverse side of the page]

[Faint, illegible text at the bottom of the page]





# Canadian Pacific Railway Co.

—AND—

## SOO PACIFIC LINE

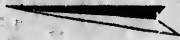


OFFER THE  
BEST AND  
CHEAPEST  
ROUTE  
TO

MINNEAPOLIS  
ST. PAUL  
OMAHA  
KANSAS CITY  
CHICAGO  
TORONTO  
MONTREAL  
QUEBEC

—AND EAST—

The Only Direct Route to the Kootenay  
Gold Fields is via the Canadian Pacific  
Railway and Canadian Pacific Steamer  
Line on the Columbia River. . . . .



Passengers Booked for all parts of EUROPE,  
CHINA, JAPAN, INDIA, AUSTRALIA and NEW  
ZEALAND, HONOLULU and FIJI ISLANDS.

## To Klondike

Connecting at Vancouver and Victoria with  
North-bound Steamers, from the Com-  
pany's Docks . . . . .



GEO. L. COURTNEY,  
Agent,  
Victoria.

JAMES SLATER,  
Ticket Agent,  
Vancouver.

E. J. COYLE,  
Dist. Pass. Agent,  
Vancouver.

ROBERT KERR,  
Traffic Manager,  
Winnipeg.

