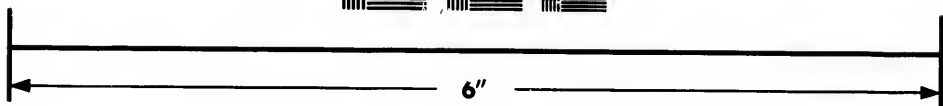
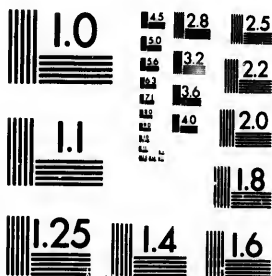


**IMAGE EVALUATION  
TEST TARGET (MT-3)**



**Photographic  
Sciences  
Corporation**

23 WEST MAIN STREET  
WEBSTER, N.Y. 14580  
(716) 872-4503

0  
1  
2  
3  
4  
5  
6  
7  
8  
9  
10  
11  
12  
13  
14  
15  
16  
17  
18  
19  
20  
21  
22  
23  
24  
25  
26  
27  
28  
29  
30  
31  
32  
33  
34  
35  
36  
37  
38  
39  
40  
41  
42  
43  
44  
45  
46  
47  
48  
49  
50  
51  
52  
53  
54  
55  
56  
57  
58  
59  
60  
61  
62  
63  
64  
65  
66  
67  
68  
69  
70  
71  
72  
73  
74  
75  
76  
77  
78  
79  
80  
81  
82  
83  
84  
85  
86  
87  
88  
89  
90  
91  
92  
93  
94  
95  
96  
97  
98  
99

**CIHM/ICMH  
Microfiche  
Series.**

**CIHM/ICMH  
Collection de  
microfiches.**



Canadian Institute for Historical Microreproductions / Institut canadien de microreproductions historiques

**© 1983**

11  
12  
13  
14  
15  
16  
17  
18  
19  
20  
21  
22  
23  
24  
25  
26  
27  
28  
29  
30  
31  
32  
33  
34  
35  
36  
37  
38  
39  
40  
41  
42  
43  
44  
45  
46  
47  
48  
49  
50  
51  
52  
53  
54  
55  
56  
57  
58  
59  
60  
61  
62  
63  
64  
65  
66  
67  
68  
69  
70  
71  
72  
73  
74  
75  
76  
77  
78  
79  
80  
81  
82  
83  
84  
85  
86  
87  
88  
89  
90  
91  
92  
93  
94  
95  
96  
97  
98  
99



The copy filmed here has been reproduced thanks to the generosity of:

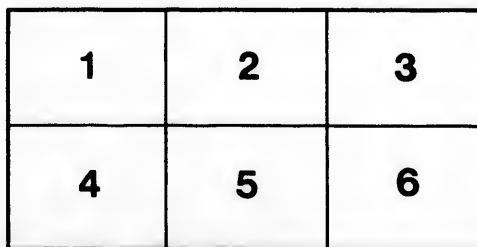
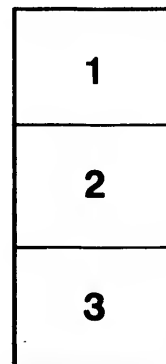
National Library of Canada

The images appearing here are the best quality possible considering the condition and legibility of the original copy and in keeping with the filming contract specifications.

Original copies in printed paper covers are filmed beginning with the front cover and ending on the last page with a printed or illustrated impression, or the back cover when appropriate. All other original copies are filmed beginning on the first page with a printed or illustrated impression, and ending on the last page with a printed or illustrated impression.

The last recorded frame on each microfiche shall contain the symbol  $\rightarrow$  (meaning "CONTINUED"), or the symbol  $\nabla$  (meaning "END"), whichever applies.

Maps, plates, charts, etc., may be filmed at different reduction ratios. Those too large to be entirely included in one exposure are filmed beginning in the upper left hand corner, left to right and top to bottom, as many frames as required. The following diagrams illustrate the method:



L'exemplaire filmé fut reproduit grâce à la générosité de:

Bibliothèque nationale du Canada

Les images suivantes ont été reproduites avec le plus grand soin, compte tenu de la condition et de la netteté de l'exemplaire filmé, et en conformité avec les conditions du contrat de filmage.

Les exemplaires originaux dont la couverture en papier est imprimée sont filmés en commençant par le premier plat et en terminant soit par la dernière page qui comporte une empreinte d'impression ou d'illustration, soit par le second plat, selon le cas. Tous les autres exemplaires originaux sont filmés en commençant par la première page qui comporte une empreinte d'impression ou d'illustration et en terminant par la dernière page qui comporte une telle empreinte.

Un des symboles suivants apparaîtra sur la dernière image de chaque microfiche, selon le cas: le symbole  $\rightarrow$  signifie "A SUIVRE", le symbole  $\nabla$  signifie "FIN".

Les cartes, planches, tableaux, etc., peuvent être filmés à des taux de réduction différents. Lorsque le document est trop grand pour être reproduit en un seul cliché, il est filmé à partir de l'angle supérieur gauche, de gauche à droite, et de haut en bas, en prenant le nombre d'images nécessaire. Les diagrammes suivants illustrent la méthode.

aire  
détails  
ues du  
t modifier  
ger une  
s filmage

ées

ire

y errata  
ad to

nt  
ne pelure,  
çon à



32X

BOARDING & DAY SCHOOL

FOR

Young Ladies and Children,

CONDUCTED BY

MRS. S. SINCLAIR,

*(Widow of the late Samuel Sinclair of Montreal,)*

AND

MISS SINCLAIR,

*(Formerly of the Church of England Ladies' School, Ottawa,)*

No. 119 O'CONNOR STREET, OTTAWA.



OTTAWA, noted for its healthfulness, and easily accessible by Railway and Steamboat, offers particular attractions to pupils from a distance; possessing all the advantages of a city, with the invigorating air of the country. Its educational facilities are equal to any in Canada, while the attendant expenses will be found considerably less than in Montreal or Toronto.

In this School, situated in a healthful and central neighborhood, the number of resident pupils is limited; special attention to their health and domestic comfort can therefore be afforded, together with thorough instruction in the usual branches of a lady's education. Domestic economy *practically* taught when desired.

The classes are under the direction of MISS SINCLAIR, formerly of the Church of England Ladies' School in this city, assisted by competent teachers.

MRS. AND MISS SINCLAIR have much pleasure in thanking their patrons of the last two years for the encouragement they have received; and trust that their continued endeavours for the welfare and improvement of their pupils will still further secure them the confidence of the public.

*References are kindly permitted to the following gentlemen,  
parents of pupils and others:—*

**OTTAWA.**

**THE LORD BISHOP OF ONTARIO.**

|                               |                                     |
|-------------------------------|-------------------------------------|
| VEN. ARCHDEACON LAUDER.       | REV. T. BEDFORD-JONES, Canon, LL.D. |
| REV. H. POLLARD.              | REV. E. HANINGTON.                  |
| SIR LEONARD TILLEY, K.C.M.G.  | H. HILL, Esq., M.D.                 |
| HON. JAS. COCKBURN, Q.C.      | C. R. CHURCH, Esq., M.D.            |
| J. A. TORRANCE, Finance Dept. | F. AYSHFORD WISE, Esq.              |
| JAS. ADAMSON, Esq.            | MARCUS SMITH, Esq., C.P.R.          |
| A. J. CAMBIE, Esq.            | CHAS. MAGEE, Esq.                   |
| A. G. PEDEN, Esq.             | H. M'CARTHY, Esq.                   |

GORDON B. PATTEE, Esq.

**MONTREAL.**

|                          |                                    |
|--------------------------|------------------------------------|
| REV. J. ELLEGOOD, Canon. | FRANCIS CRISPO, Esq., H.M.C.       |
| REV. E. WOOD, M.A.       | G. CAMPBELL, Esq. Dean of Faculty. |
| REV. E. W. NORMAN.       | G. E. FENWICK, Esq., M.D.          |
| M. H. GAULT, Esq., M.P.  | JOHN SINCLAIR, Esq.                |
| HON. JAMES FERRIER.      | JOHN POPHAM, Esq.                  |

**TORONTO.**

|                         |                      |
|-------------------------|----------------------|
| REV. J. D. CAYLEY, M.A. | W. C. CAMPBELL, Esq. |
|-------------------------|----------------------|

**LONDON, ONT.**

|                               |                          |
|-------------------------------|--------------------------|
| REV. G. M. INNES, Canon, M.A. | REV. H. F. DARNELL, D.D. |
|-------------------------------|--------------------------|

**COBOURG, ONT.**

|                                   |                    |
|-----------------------------------|--------------------|
| REV. WALTER STENNETT, Canon, M.A. | J. R. BARBER, Esq. |
|-----------------------------------|--------------------|

**CRYSLER, ONT.**

REV. J. SERSON.

---

*Also to MISS MACHIN, First Principal Church of England Ladies' School,  
Ottawa, now of St. Bartholomew's, London, England.*

*The School Year is divided into four Terms of ten weeks each ; beginning the first Wednesday in September ; November 10th ; February 10th ; and April 20th, respectively.*

## FEES.

(Payable strictly in advance.)

**Board, with Tuition in English, Laundry and Pew Rent, per Term, \$60.**

Boarders are not required to furnish their bed and table linen, silver, &c. They are, however, requested to provide themselves with a napkin ring.

Their clothing should be plainly marked, and should include overshoes, waterproof and umbrella ; a comfortable wrapper and house slippers.

### DAY PUPILS.

#### PREPARATORY CLASS.

|                  |        |
|------------------|--------|
| English—per Term | \$5 00 |
| French “         | 3 00   |

#### INTERMEDIATE.

|                  |      |
|------------------|------|
| English—per Term | 7 00 |
| French “         | 3 00 |

French on a simple, effective method, adapted to the ability of young children, may be begun with advantage in either of the above classes. *Pure and elegant pronunciation. Daily lessons.*

#### JUNIOR AND SENIOR CLASSES.

|   |        |
|---|--------|
| English—per Term  | \$9 00 |
| French “ <i>(Daily lessons)</i>                               | 5 00   |
| German “  | 5 00   |
| Latin “   | 5 00   |
| Drawing “   | 7 00   |
| Painting—(Oil and Water Color, Velvet, Silk, China, &c.) each | 10 00  |
| Piano—By a Lady Teacher                                       | 8 00   |
| By a Master   | 15 00  |
| Singing   | 10 00  |
| Use of Piano for practice, (1 hour daily)                     | 2 00   |

**Plain Sewing carefully taught WITHOUT EXTRA CHARGE.**

**Lessons in Calisthenics and Dancing at suitable seasons of the year, \$6 per term.**

MRS. AND MISS SINCLAIR have most earnestly to request the regular attendance of Day Pupils, without which no progress in their studies can be made. When temporary absence, however short, unpunctuality or non-preparation of lessons is unavoidable, a written explanation to that effect should be brought from home.



