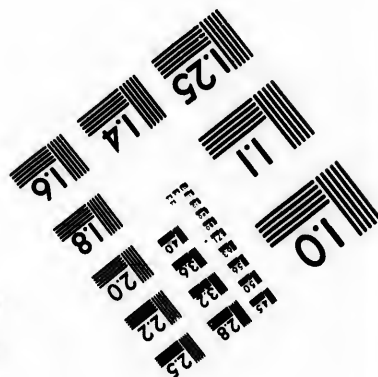
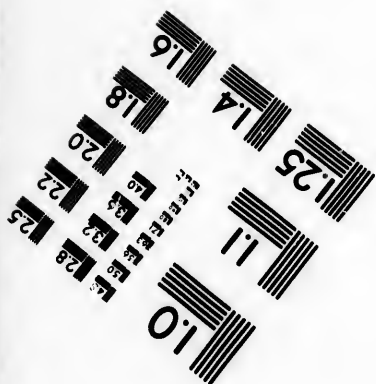
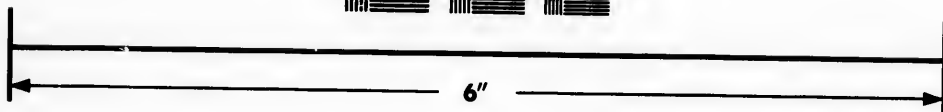
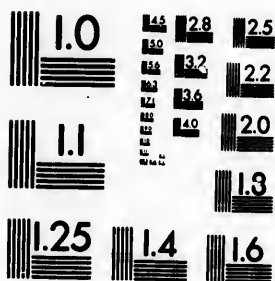


**IMAGE EVALUATION  
TEST TARGET (MT-3)**



**Photographic  
Sciences  
Corporation**

23 WEST MAIN STREET  
WEBSTER, N.Y. 14580  
(716) 872-4503

0  
E 128  
E 132  
E 136  
E 140  
E 144  
E 148  
E 152  
E 156  
E 160  
E 164  
E 168  
E 172  
E 176  
E 180  
E 184  
E 188  
E 192  
E 196  
E 200

**CIHM/ICMH  
Microfiche  
Series.**

**CIHM/ICMH  
Collection de  
microfiches.**



**Canada: Institute for Historical Microreproductions / Institut canadien de microreproductions historiques**

10  
E 1  
E 2  
E 3  
E 4  
E 5  
E 6  
E 7  
E 8  
E 9  
E 10  
E 11  
E 12  
E 13  
E 14  
E 15  
E 16  
E 17  
E 18  
E 19  
E 20  
E 21  
E 22  
E 23  
E 24  
E 25  
E 26  
E 27  
E 28  
E 29  
E 30

**© 1986**

Technical and Bibliographic Notes/Notes techniques et bibliographiques

The Institute has attempted to obtain the best original copy available for filming. Features of this copy which may be bibliographically unique, which may alter any of the images in the reproduction, or which may significantly change the usual method of filming, are checked below.

L'Institut a microfilmé le meilleur exemplaire qu'il lui a été possible de se procurer. Les détails de cet exemplaire qui sont peut-être uniques du point de vue bibliographique, qui peuvent modifier une image reproduite, ou qui peuvent exiger une modification dans la méthode normale de filmage sont indiqués ci-dessous.

- |  |   |
|--|---|
| <input type="checkbox"/> Coloured covers/<br>Couverture de couleur   | <input type="checkbox"/> Coloured pages/<br>Pages de couleur  |
| <input type="checkbox"/> Covers damaged/<br>Couverture endommagée  | <input type="checkbox"/> Pages damaged/<br>Pages endommagées  |
| <input type="checkbox"/> Covers restored and/or laminated/<br>Couverture restaurée et/ou pelliculée  | <input type="checkbox"/> Pages restored and/or laminated/<br>Pages restaurées et/ou pelliculées   |
| <input type="checkbox"/> Cover title missing/<br>Le titre de couverture manque   | <input checked="" type="checkbox"/> Pages discoloured, stained or foxed/<br>Pages décolorées, tachetées ou piquées  |
| <input checked="" type="checkbox"/> Coloured maps/<br>Cartes géographiques en couleur  | <input checked="" type="checkbox"/> Pages detached/<br>Pages détachées  |
| <input type="checkbox"/> Coloured ink (i.e. other than blue or black)/<br>Encre de couleur (i.e. autre que bleue ou noire)   | <input checked="" type="checkbox"/> Showthrough/<br>Transparence  |
| <input type="checkbox"/> Coloured plates and/or illustrations/<br>Planches et/ou illustrations en couleur  | <input type="checkbox"/> Quality of print varies/<br>Qualité inégale de l'impression  |
| <input type="checkbox"/> Bound with other material/<br>Relié avec d'autres documents   | <input type="checkbox"/> Includes supplementary material/<br>Comprend du matériel supplémentaire  |
| <input type="checkbox"/> Tight binding may cause shadows or distortion<br>along interior margin/<br>La reliure serrée peut causer de l'ombre ou de la<br>distorsion le long de la marge intérieure   | <input type="checkbox"/> Only edition available/<br>Seule édition disponible  |
| <input type="checkbox"/> Blank leaves added during restoration may<br>appear within the text. Whenever possible, these<br>have been omitted from filming/<br>Il se peut que certaines pages blanches ajoutées<br>lors d'une restauration apparaissent dans le texte,<br>mais, lorsque cela était possible, ces pages n'ont<br>pas été filmées. | <input type="checkbox"/> Pages wholly or partially obscured by errata<br>slips, tissues, etc., have been refilmed to<br>ensure the best possible image/<br>Les pages totalement ou partiellement<br>obscuries par un feuillet d'errata, une pelure,<br>etc., ont été filmées à nouveau de façon à<br>obtenir la meilleure image possible. |
| <input type="checkbox"/> Additional comments:/<br>Commentaires supplémentaires:  |   |

This item is filmed at the reduction ratio checked below/  
Ce document est filmé au taux de réduction indiqué ci-dessous.

10X	14X	18X	22X	26X	30X
<input checked="" type="checkbox"/>	<input type="checkbox"/>	<input type="checkbox"/>	<input type="checkbox"/>	<input type="checkbox"/>	<input type="checkbox"/>
12X	16X	20X	24X	28X	32X

The copy filmed here has been reproduced thanks to the generosity of:

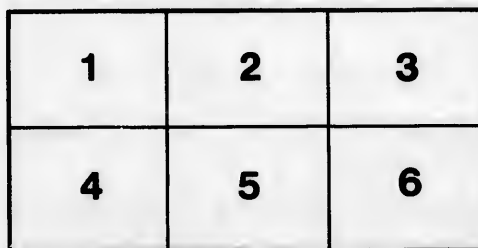
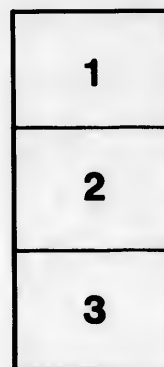
National Library of Canada

The images appearing here are the best quality possible considering the condition and legibility of the original copy and in keeping with the filming contract specifications.

Original copies in printed paper covers are filmed beginning with the front cover and ending on the last page with a printed or illustrated impression, or the back cover when appropriate. All other original copies are filmed beginning on the first page with a printed or illustrated impression, and ending on the last page with a printed or illustrated impression.

The last recorded frame on each microfiche shall contain the symbol  $\rightarrow$  (meaning "CONTINUED"), or the symbol  $\nabla$  (meaning "END"), whichever applies.

Maps, plates, charts, etc., may be filmed at different reduction ratios. Those too large to be entirely included in one exposure are filmed beginning in the upper left hand corner, left to right and top to bottom, as many frames as required. The following diagrams illustrate the method:



L'exemplaire filmé fut reproduit grâce à la générosité de:

Bibliothèque nationale du Canada

Les images suivantes ont été reproduites avec le plus grand soin, compte tenu de la condition et de la netteté de l'exemplaire filmé, et en conformité avec les conditions du contrat de filmage.

Les exemplaires originaux dont la couverture en papier est imprimée sont filmés en commençant par le premier plat et en terminant soit par la dernière page qui comporte une empreinte d'impression ou d'illustration, soit par le second plat, selon le cas. Tous les autres exemplaires originaux sont filmés en commençant par la première page qui comporte une empreinte d'impression ou d'illustration et en terminant par la dernière page qui comporte une telle empreinte.

Un des symboles suivants apparaîtra sur la dernière image de chaque microfiche, selon le cas: le symbole  $\rightarrow$  signifie "A SUIVRE", le symbole  $\nabla$  signifie "FIN".

Les cartes, planches, tableaux, etc., peuvent être filmés à des taux de réduction différents. Lorsque le document est trop grand pour être reproduit en un seul cliché, il est filmé à partir de l'angle supérieur gauche, de gauche à droite, et de haut en bas, en prenant le nombre d'images nécessaire. Les diagrammes suivants illustrent la méthode.

rrata  
co

celure.  
n à

# MONTREAL INDIAN STORE

Wholesale and Retail Dealer in

## INDIAN CURIOSITIES

262 NOTRE DAME STREET,

MONTREAL.

---

Has constantly on hand a general variety of work done in the BEST and NEATEST MANNER, such as Embroidery on Bark and Cloth, Bead Work, Porcupine Work made by the DIFFERENT TRIBES in North America.

---

LACROSSE SHOES, SNOW SHOES, AND  
TOBOGGANS.

---

Ladies', Boys' and Gentlemen's Black, White and Yellow Moccasins of all sizes, Buck Gloves,

BARK CANOES, &C.

# GUIDE BOOK

OF THE

## CITY OF MONTREAL,

WITH MAP.

---

Montreal:

MORTON, PHILLIPS & BULMER, PRINTERS

1881.

# CONTENTS.

---

Area and Population of the Dominion . . . .	5
Banks . . . . .	20
Cab Tariff . . . . .	26
Churches, Chapels, Etc. . . . .	21
City Passenger Railway . . . . .	19
Dominion of Canada . . . . .	3
Excursions . . . . .	18
Map of Montreal . . . . .	
Montreal . . . . .	6
Money . . . . .	5
Places of Amusement . . . . .	17
Places of Interest . . . . .	12
Postage Rates and Regulations . . . . .	31
Railway Time Table . . . . .	28
Steamboat Time Table . . . . .	30

G  
  
M  
M  
P  
M  
M  
P  
M  
M  
M  
S  
M  
M

## DOMINION OF CANADA.

## SEAT OF GOVERNMENT, OTTAWA.

- Governor General*—His Excellency the Right Honorable Sir John Douglas Sutherland Campbell, Marquis of Lorne, one of Her Majesty's Most Honorable Privy Council, Knight of the Most Ancient and Most Noble Order of the Thistle, Knight Grand Cross of the Most Distinguished Order of St. Michael and St. George, Governor-General of the Dominion of Canada, and Vice-Admiral of the same, &c., &c., &c.
- Min. of the Interior (Premier)*—The Right Hon. Sir J. A. Macdonald.
- Minister of Finance*—Sir S. L. Tilley.
- Min. Railways and Canals*—Sir C. Tupper
- Postmaster General*—Hon. Sir A. Campbell.
- Minister of Justice*—Hon. James Macdonald.
- Min. Public Works*—Hon. H. L. Langevin.
- Pres. of the Council*—Hon. J. A. Mousseau.
- Min. of Agriculture*—Hon. J. H. Pope.
- Min. of Customs*—Hon. McKenzie Bowell.
- Min. of Militia*—Hon. J. P. R. A. Caron.
- Secretary of State*—Hon. John O'Connor.
- Min. Marine and Fisheries*—Hon. J. C. Pope
- Min. of Inland Revenue*—Hon. J. C. Aikens.



FOR A LARGE STOCK

OF

*SOLID LEATHER*

BOOTS AND SHOES

of all descriptions. Also a large and  
well-selected stock of

LADIES', MISSES & CHILDREN'S

FANCY SLIPPERS,

GO TO

W. F. SMARDON'S

*Corner Bleury and St. Catherine Streets,*

MONTREAL.

Area and Population of the Dominion.

Provinces.	English Square Miles	Population. 1881.
Ontario.....	107,780	1,913,460
Quebec .....	193,355	1,358,469
New Brunswick .....	27,322	321,129
Nova Scotia .....	21,731	440,585
Manitoba.....	13,969	49,509
British Columbia .....	356,000	60,000
Prince Edward Island..	2,133	107,781
North West Territory..	2,650,000	100,000
Total .....	3,372,290	4,350,933

MONEY.

The decimal system of currency was introduced into the Dominion of Canada and British North America by Act 34 Vict. cap. 5. It is ordered by the Act that the unit of account shall be the dollar of 100 cents, the value of which dollar shall be on the basis of 486 cents and two-thirds of a cent to the pound of British sterling money. The value of the money of the United Kingdom is fixed by law as follows: The sovereign, of the weight and fineness now established, four dollars and eighty-six and two-third cents; the crown piece, one dollar and twenty cents; the half-crown piece, sixty cents; the florin, forty-eight cents; the shilling, twenty-four cents; the sixpence, twelve cents.

## MONTREAL.

The commercial metropolis of the Dominion, and the most populous of Canadian cities, (population in 1881, 140,682), is situated at the head of Ocean navigation, 540 miles from the Gulf of St Lawrence, on the Island of Montreal, which lies between the two great rivers of the north the St. Lawrence and Ottawa. The Island is 32 miles long by 10 broad ; with the exception of the Mountain, which rises to the height of 739 feet, it is nearly level, the soil is fertile, well cultivated and watered, the climate is particularly favorable for the growth of nearly all kinds of grain, fruit and vegetables. The settlement of the town was originally determined by the first explorer, Jacques Cartier in 1535, at which time an Indian village called Hochelaga occupied the spot. Jacques Cartier, on beholding the beautiful scenery from the Mountain, gave the name of Mount Royal which, slightly modified, it still retains. It was under French rule until 1760, when it passed into the hands of the British. At the beginning of the present century, vessels of more than 300 tons could not come up to Montreal, and foreign trade was carried on by brigs and barges.

THOS. ALLAN & Co.

MAKERS

AND

IMPORTERS OF

WATCHES

AND

JEWELRY,

167 ST. JAMES STREET,

MONTREAL.

e Do-  
adian  
s sit-  
n, 540  
n the  
n the  
rence  
g by  
oun-  
et, it  
culti-  
larly  
nds of  
ment  
y the  
which  
occu-  
lding  
gave  
mo-  
ench  
ands  
the  
tons  
eign  
ges.

Years of industry, intelligence, enterprise and labour, have produced a mighty contrast. Ocean Steamers of 5,000 tons now lay along the wharves of the harbour. In 1832 Cholera raged in Montreal with great violence, carrying off 1,832 inhabitants. In 1852 a large portion of the City was destroyed by fire; 1,108 houses and property to the amount of \$1,363,294 destroyed. The older parts of the City, near the river, have narrow, incommodious streets; but the growth of the City toward the Mountain has been liberally laid out with wide, cheerful thoroughfares. The buildings are large and finely constructed, chiefly of limestone quarried near the City. Notre Dame is the main street, running along a ridge on which the City was originally built. St. James Street, near, and running for some way parallel with it, is wider and more elegant. The principal business streets are:—Notre Dame, St. James, St. Paul, St. Lawrence, McGill, Craig and St. Joseph.

**THE HARBOUR.**—The wharfage accommodation measures 16,140 lineal feet, or more than 3 miles, with 11,690 feet of wharf room in 20 feet depth of water.

**THE WHARVES** are surmounted by a massive cut stone wall, along the height of which is

MORTON, PHILLIPS & BULMER,

STATIONERS,

Blank Book Makers

AND PRINTERS,

375 NOTRE DAME STREET.

MONTREAL.

prise and  
contrast.  
y along  
n 1832  
great  
bitants.  
was de-  
perty to  
l. The  
r, have  
ut the  
ain has  
cheerful  
rge and  
e quar-  
e main  
ch the  
Street,  
parallel  
The  
Dame,  
McGill,  
ccom-  
et, or  
wharf  
assive  
ich is

a pleasant promenade and wide street, affording a fine view of the river and its shipping. There are numerous inclined planes from the wharves, by which carriages ascend to the street above; and the whole, for appearance, commodiousness, and cleanliness, is unsurpassed by any port on the continent.

THE VICTORIA BRIDGE, completed in 1860, is nearly two miles in length (9084 ft.) is used only for railway transit. It is supported by 24 piers, the central span being 550 feet, and 60 feet high, the remaining piers being 242 feet, with massive abutments. The bridge tube is of iron, 22 feet high by 16 wide, lessening at the ends. It was erected at a cost of \$6,300,000. Three million cubic feet of masonry and ten thousand tons of iron enter into the construction of this massive work. The river beneath the bridge has a swift current, and the piers are calculated to withstand immense pressure from descending masses of ice.

THE WINTER SEASON in Montreal is particularly attractive; the weather is sunny and bracing, and the sleighing, tobogganning, skating and curling are enjoyed to perfection, and many scores of parties from the States come north every winter to enjoy the sports and pastimes.

## DOMINION EXHIBITION, 1880.

- 1st prize—Best assortment of Fishing Spoons.  
 “ “ —Best asst. of Salmon, Bass and Trout Flies  
 “ “ —Best assortment of Silk, Cotton, Linen and  
 Hemp Fishing Lines.  
 Special Diploma for best asst. of Fishing Tackle.

## OSTELL & CO.

AGENTS FOR PROVINCE OF QUEBEC

FOR

“NATIONAL” MANUFACTURING Co.,  
 Ottawa—Tents, Flags, Awnings, &c.  
 W. D. CHAPMAN & Co., Theresea, N.  
 Y., largest manufactures of Spoons  
 in the world.

Fishing Tackle, Sporting Goods, Snow  
 Shoes, Toboggans, Moccasins, &c.

THE OLD STAND,

16 CUSTOM HOUSE SQUARE,  
 MONTREAL.



## SPECIAL PLACES OF INTEREST

## IN AND AROUND MONTREAL.

ALBERT BUILDING, Victoria Square.

ART GALLERY, Phillip Square—Admission  
25 cents, Saturdays free.

ALLAN STEAMSHIPS.

BANK OF MONTREAL, Place d'Armes.

BONSECOURS MARKET, St. Paul Street.  
The early morning is the best time for  
visiting.

CHURCH OF THE GESU, Bleury Street, above  
Dorchester. The frescoes and pictures are  
particularly fine.

CHRIST CHURCH CATHEDRAL, St. Cath-  
erine Street.

CITY HALL, Notre Dame Street, opposite  
Jacques Cartier Square.

COURT HOUSE, do. do.

CUSTOM HOUSE, Corner Commissioners  
and Foundling Streets.

DRIVE TO LACHINE, by Lower Road, along  
the river bank, from which the Lachine  
Rapids can be seen to good advantage.

DRIVE TO MOUNT ROYAL PARK.—The  
natural scenery of the vicinity, as viewed  
from the eminences of the Park, is very

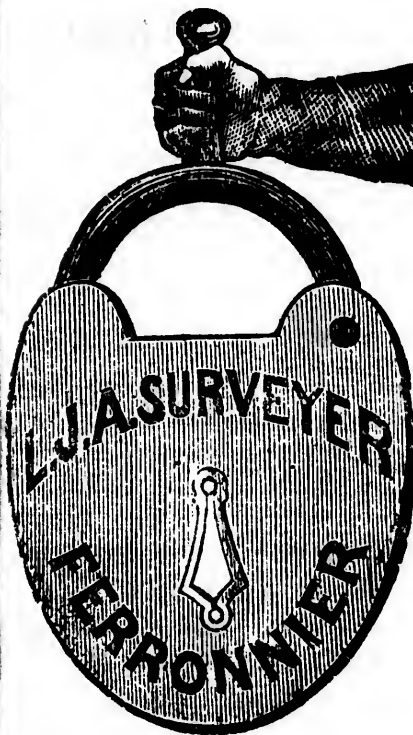


CU

F  
Eng

Opp.

REST  
 L.  
 e.  
 Admission  
 es.  
 Street.  
 time for  
 et, above  
 ctures are  
 t. Cath-  
 opposite  
 do.  
 issioners  
 d, along  
 Machine  
 vantage.  
 k.—The  
 viewed  
 is very



# NOVELTIES

IN

HOUSE-

FURNISHING

## HARDWARE

GILRAY'S

PATENT

### CURTAIN STRETCHERS,

PATENT CARPET SWEEPERS,

PATENT POTATO FRYERS,

*English Iron Bedsteads, Etc., Etc.,*

**WHOLESALE AND RETAIL.**

## L. J. A. SURVEYER,

188 NOTRE DAME STREET.

Opp. West End Court House.

beautiful and varied—the St. Lawrence and Ottawa Rivers on either hand, bounding the Island of Montreal; St. Helen's Island, opposite the City, a fortified Military post and Public Park; Victoria Bridge; in the distance are the Belœil Mountains and the Adirondacks, while the white foam of the Lachine Rapids can be distinctly seen toward the west. Mount Royal itself, clothed with firs, pines and maples, and decked with wild flowers and ferns, is unequalled by any other city park on the Continent.

**DRIVE AROUND THE MOUNTAIN.**

**DRIVE TO BACK RIVER**, 6 miles from Montreal, is a pleasant one. The Convent of the Sacred Heart, the Palace of the Archbishop of Montreal, and Jesuits' College, are situated here.

**GENERAL HOSPITAL**, Dorchester Street.

**GREY NUNNERY**, Dorchester Street, west.

**HOTEL DIEU HOSPITAL**, Pine Avenue, head of St. Famille Street.

**MERCHANTS' BANK**, St. James Street.

**MCGILL COLLEGE AND UNIVERSITY**, Sherbrooke Street.

**MOUNT ROYAL CEMETERY**, at back of Mount Royal, is tastefully laid out in

**D**

O  
ity,  
ble,  
Sno  
in g

**CENTENNIAL FIRST PRIZES,***Gold and Bronze Medals.***LANTHIER & CO.****Hatters and Furriers**

271 NOTRE DAME STREET,

MONTREAL.

On hand : Russian Furs of the finest quality, personally selected ; Royal Russian Sable, Ermine, etc., and Hudson Bay Furs, Snow Shoes, Moccasins, Indian Curiosities, in great variety.

**BRILLIANTLY LIGHTED FUR SHOW-ROOMS  
ALWAYS OPEN.**

avenues, and is adorned with artificial lakes, rustic bridges, etc.

**MECHANICS' INSTITUTE**, St. James Street, has a reading-room well supplied. Strangers are welcome when introduced by members.

**MERCHANTS' EXCHANGE**, St. Sacrament Street.

**MONTREAL TELEGRAPH CO'S BUILDING**, St. Francois Xavier Street.

**MOLSON'S BANK**, St. James Street.

**NATURAL HISTORY SOCIETY'S MUSEUM**, 32 University Street.

**NELSON'S MONUMENT**, Jacques Cartier Sq. Erected to the memory of the Hero of Trafalgar. It is of the Doric order. The ornaments in the panels on the sides of the tablet are emblematical of the Battle of the Nile.

**NOTRE DAME CATHEDRAL**, Place d'Armes. From the towers of this Church a fine view of the City can be obtained,

**POST OFFICE**, St. James Street, cor. St. Francois Xavier Street.

**QUEEN'S HALL BLOCK**, St. Catherine St.

**ST. HELENS ISLAND PARK**.

**THE MONKLANDS**, Cotes des Neiges.

TR  
P  
VIC  
WI  
re  
th  
o  
Yo  
V  
ro  
w  
P  
T

THI  
to  
THI  
ME  
THI  
S  
n  
ru  
a  
o  
s  
QU  
th  
AL  
o

TRIP TO LACHINE, RETURNING BY THE RAPIDS. (See Steamboat Time-Table.)

VIGER GARDENS, Craig Street.

WINDSOR HOTEL, Dominion Square. The rotunda and halls in this grand hotel are the chief attractions and are well worthy of a visit.

YOUNG MEN'S CHRISTIAN ASSOCIATION, Victoria Square, contains a large reading-room, well supplied with papers, to which strangers are welcome. There is a Prayer Meeting at noon each day, and on Tuesday, Friday and Saturday nights.

### PLACES OF AMUSEMENT.

THE ACADEMY OF MUSIC, situated in Victoria Street, Corner St. Catherine.

THE THEATRE ROYAL, Coté Street.

MECHANICS HALL, St. James Street.

THE VICTORIA SKATING RINK, Drummond Street. This building, 200 ft. by 80, furnishes a large field of ice, free from interruption. Skating Carnivals and Masquerades take place frequently in winter, and is occasionally used as a concert hall during summer.

QUEEN'S HALL, on St. Catherine Street is the finest Hall in the City.

ALBERT HALL, is on Beaver Hall Hill, site of old Zion Church.

FERRIES & PLEASURE RESORTS

LAPRAIRIE—Steamer “Laprairie” leaves wharf opposite Bonsecours Market at 6.30 a.m., 12 a.m. 4 and 6.30 p.m. ; leaves Laprairie 5.30 and 8.15 a.m. and 2.00 and 5.30 p.m. Sunday.—Leave Laprairie at 8.15 a.m. and 5 p.m. ; Montreal, 2 and 6 p.m. Single fare, 15 cts.

LACHINE RAPIDS.—Leave Bonaventure Depot at 7.55 a.m. for Lachine and steamer “Beauharnois,” reaching the city at 9.15. Fare, round trip, 50c. Leave Bonaventure Depot at 5 p.m. for Lachine and steamer “Prince of Wales,” reaching Montreal at 6.30 p.m. Fare, round trip, 50c.

CARILLON, 50 miles up Ottawa River, beautifully situated at foot of rapids, passing Lake St. Louis, St. Anns and picturesque Lake of Two Mountains, Indian village of Oka, Como, &c., stopping 1½ hours at Carillon. Train, 7 a.m., connects with steamer. From Montreal, round trip, \$1.25; Saturdays, \$1.00.

MASSUE’S AND DESCHAMPS’ GROVE.—Calling at Boucherville and Varennes, steamer Terrebonne leaves foot of Jacques Cartier square daily at 9.30 a.m. and 5 p.m. ; returning arrives in Montreal at 2.30 p.m. and 9 p.m. Fare, return ticket—morning trip, 20c ; afternoon, 30c.

ISLE GROS BOIS—Steamer “Montarville” from Jacques Cartier Wharf.—Mondays and Thursdays, 10.30 a.m. and 2.30 p.m. Saturdays and Sundays, 2.30 p.m.

ST. HELEN’S ISLAND.—Steamer “Filgate,” leaving this side on the half hours and returning from the Island on the hours. The first boat leaving this side at half-past eight, and the last boat from St. Helens Island leaves at seven.

C  
run  
Pap  
H  
ever  
Hoc  
Fare  
St  
from  
at 9  
Fare  
Po  
every  
Post  
St  
Cars  
8 min  
9.40  
Fare  
To  
Bleu  
Grou  
niqu  
Up S  
Le  
Mou  
Fare  
10 ct

TS.

RTS

CITY PASSENGER RAILWAY.

CRAIG AND ST. ANTOINE STREET ROUTE.—Cars run every 15 minutes, from 7.00 a.m. Last Car from Papineau Road at 9.30 p.m.—Fare 5 Cents.

HOCHELAGA AND TANNERIES ROUTE.—Cars run every 12 minutes, from 6.00 a.m. Last Car from Hochelaga at 9.40 p.m. : from Tanneries at 10.00 p.m. Fare 5 Cents.

ST. DENIS STREET CARS run every 15 minutes from 6.15 a.m. Last Car leaves top St. Denis street at 9.30 p.m. from foot St. Denis street at 9.40 p.m. Fare 5 Cents.

POINT ST. CHARLES OMNIBUS.—Leaves Post-Office every 30 minutes from 6.15 a.m. Last Car leaves Post-Office at 8 p.m.—Fare 5 Cents.

ST. CATHERINE AND ST. LAWRENCE ROUTE.—Cars run every 16 minutes in the morning, and every 8 minutes after 2 p.m. Last Car leaves Mile-End at 9.40, and St. Catherine street Terminus at 10.20 p.m. Fare 5 Cents.

To EXHIBITION GROUNDS.—Fare 5 Cents. Up Bleury to St. Catherine, connects with "Buss" for Grounds. Up St. Lawrence, returning by St. Dominique, Sherbrooke, and St. Chas. Borromee Street. Up St. Denis Street.

Mount Royal Passenger Line.

Leaves Post-office for Mountain Park and top of Mountain every half-hour, from 9 a.m. till 6 p.m. Fare, one way, 15 cts. ; Return, 25 cts. Children 10 cts., and 15 cts. return.

s wharf  
2 a.m. 4  
3.15 a.m.  
Laprairie  
d 6 p.m.

Depot at  
arnois,"  
rip, 50c.  
hine and  
ntreal at

autifully  
t. Louis,  
ountains,  
1½ hours  
steamer.  
s, \$1.00.

alling at  
rebonne  
y at 9.30  
ntreal at  
morning

" from  
ursdays,  
lays, 2.

leaving  
rom the  
ng this  
rom St.



## BANKS.

Bank of Montreal, Established 1818—Capital  
\$12,000,000.

Merchants Bank of Canada—Capital \$5,-  
500,000.

Bank of British North America, Established  
1836—Capital £1,000,000.

La Banque du Peuple, Established 1835—  
Capital \$2,000,000.

Molsons Bank—Capital \$2,000,000.

La Banque Jacques Cartier—Cap. \$500,000.

Union Bank of Lower Canada—Capital \$2,-  
000,000.

Quebec Bank—Capital \$3,000,000

Bank of Toronto—Capital \$2,000,000.

Exchange Bank of Canada—Cap. \$1,000,000

Ontario Bank—Capital \$3,000,000.

The Canadian Bank of Commerce—Capital  
\$6,000,000.

La Banque National—Capital \$2,000,000.

La Banque Ville Marie.

La Banque d'Hochelaga—Capital \$1,000,000

City and District Savings Bank.

Gra  
St.  
St.  
S  
St.  
St.  
S  
St.  
St.  
St.  
Tri  
  
Sale  
M  
St.  
  
Cal  
Em  
We  
  
Chu

## CHURCHES, CHAPELS, Etc.

## PROTESTANT.

## CHURCH OF ENGLAND.

*Grace Church*—Point St. Charles.

*St. George's*—Dominion Sqr., Cor. Osborne.

*St. James the Apostle*—1581 St. Catherine Street, West.

*St. Jude's*—Coursol Street.

*St. John the Evangelist*—Cor. Ontario and St. Urbain Streets.

*St. Luke's*—Cor. Champlain and Dorchester Streets.

*St. Martin's*—120 Upper St. Urbain Street.

*St. Stephen's*—Cor. College and Inspector Sts.

*St. Thomas*—305 St. Mary Street.

*Trinity*—St. Denis Street, Viger Gardens.

## CHURCH OF SCOTLAND.

*Salem*—(Mission) Panet Street, below St. Mary.

*St. Andrew's*—Beaver Hall Hill.

## CONGREGATIONAL.

*Calvary*—308 Guy Street.

*Emanuel*—1463 St. Catherine Street.

*Wesley*—1252 St. Catherine Street.

## UNITARIAN.

*Church of the Messiah*—Beaver Hall Hill.

## PRESBYTERIAN.

*Crescent Street*—Cor. Dorchester and Crescent Streets.

*Chalmers*—St. Lawrence, above Sherbrooke.

*Erskine*—Cor. St. Catherine and Peel Streets

*Knox*—Cor. Dorchester and Mansfield Sts.

*Nazareth Street*—Nazareth Street, Cor. Wellington.

*Stanley*—Stanley Street, above Dorchester.

*St. Gabriel*—Cor. St. James and St. Gabriel.

*St. John's*—(French) St. Catherine Street.

*St. Mark's*—William Street.

*St. Matthew's*—Point St. Charles.

*St. Paul's*—Dorchester, Cor. St. Monique.

*American*—Cor. Dorchester and Drummond Streets.

*Saviour's*—(French) 90 Canning Street.

## METHODIST CHURCH OF CANADA.

*Dorchester Street*—Dominion Sqr. Cor. Dorchester and Peel Streets.

*Douglas*—1805 St. Catherine Street.

*Ottawa Street*—Ottawa Street.

*Sherbrooke Street*—Sherbrooke Street near St. Lawrence.

*St. James Street*—187 St. James Street.

*St. Joseph Street*—St. Joseph Street.

## GERMAN—PROTESTANT.

*St. John's*—127 St. Dominique Street.

# BELGIAN EXHIBITION.

---

The Goods exhibited at the

## PROVINCIAL EXHIBITION,

### MONTREAL,

*(BELGIAN SECTION,)*

can be ordered at

## MESSRS. DeLAET & CO.

16 DEBRESOLES STREET,

MONTREAL.

## BAPTIST.

*First Baptist*—Cor. City Councillor and St. Catherine Streets.

*French Protestant*—Cor. Dorchester and Hanover Streets.

*Olivet*—Cor. Osborne and Mountain Streets.

## SWEDENBORGIAN.

*New Jerusalem*—192 Mountain Street.

## JEWISH.

*Jewish Synagogue*—(English) Chenneville St.  
 “ “ (German and Polish) St. Catherine Street.

## ROMAN CATHOLIC.

*Bonsecours*—St. Paul Street East.

*Church of the Gesu*—144 Bleury Street.

*Hospice St. Joseph*—471 Mignonne Street.

*Notre Dame de Lourdes*—St. Catherine near St. Denis Street.

*Notre Dame Parish*—Place d'Armes.

*Notre Dame des Anges*—537 Lagauchetiere.

*St. Ann's*—28 Basin Street.

*St. Bridget's*—Cor. Dorchester and Champlain Streets.

*St. James (Parish)* 127 St. Denis Street.

*St. Joseph*—316 Richmond Street.

*St. Patrick's (Parish)*—Cor. Lagauchetiere and St. Alexander Streets.

*St. Peter's*—Cor. Dorchester and Visitation.

*St. Vincent de Paul*—138 St. Catherine Street

# WM. HOOD & CO.

BOOKSELLERS,

STATIONERS,

BOOKBINDERS,

AND

MANUFACTURERS OF BLANK BOOKS,

415 NOTRE DAME STREET,

CORNER ST. PETER STREET,

MONTREAL.

—IMPORTERS OF—

Children's Illustrated Books, Holiday  
Presents, Birthday, Wedding and  
Holiday Cards, Fancy  
Stationery,  
Photographic Scraps, Views, &c.

## TARIFF FOR HACKNEY CARRIAGES.

From any place to any other, provided the time occupied does not exceed 20 minutes, 1 or 2 persons, 1-horse vehicle, 25 cts. ; 2-horse vehicle, 50 cts. : 3 or 4 persons, 1-horse vehicle, 50 cts. ; 2-horse vehicle, 75 cts. When time exceeds above mentioned for distance, hour rates to be charged.

From any place to any other, and back, provided the time occupied do not exceed 30 minutes, 1 or 2 persons, 1-horse vehicle, 40 cts. ; 2-horse vehicle, 65 cts. ; 3 or 4 persons, 1-horse vehicle, 60 cts. ; 2-horse vehicle, 75 cts.

### BY THE HOUR.

One horse, 1 or 2 persons, 75 cts.; 2-horse, \$1.00 ; 3 or 4 persons, 1-horse, \$1.00 ; 2-horse, \$1.25. Every subsequent hour, 1 or 2 persons, 1-horse, 60 cts. ; 2-horse, \$1.00 ; 3 or 4 persons, 1-horse, 75 cts. ; 2-horse \$1.25.

REMARKS.—For each trunk or box carried in any vehicle, 10 cents.

Fractions of hours to be charged at *pro rata* hour rates ; not less than one-quarter of an hour shall be charged when the time exceeds an hour.

Tariff by the hour to apply to all rides extending beyond the city limits, where the engagement is commenced and concluded within the city.

Fifty per cent. to be added to the tariff rate of rides from midnight to four a.m.

Martin

PHOTOGRAPHER.

---

MARTIN'S PHOTOGRAPHS ARE  
GREATLY ADMIRERD.

---

A VISIT TO HIS STUDIO WILL  
BE TIME WELL SPENT.

---

141 ST. PETER STREET

*BETWEEN CRAIG AND ST. JAMES STREETS,*

MONTREAL.



## RAILWAY TIME TABLE.

## GRAND TRUNK RAILWAY—BONAVENTURE STATION.

*Going West*—Express for all points West, 9.30 a.m. and 10 p.m. Mixed, 2.30 p.m. For Cornwall, 5 p.m. Mixed to Vaudreuil, 6.15 p.m. (Saturday only 2 p.m.)  
ARRIVE FROM—Express, 7.15 a.m., 9 p.m. Mixed, 6 p.m. Cornwall, 9 a.m.

*Going East*—Quebec and Island Pond, 7.30 a.m. Richmond and Island Pond, 3.30 a.m. Quebec and Portland, 7.30 a. m. and 10 p.m. St. Hyacinthe, 5.10 p.m. ARRIVE Quebec, 6 a.m. and 4.45 p.m. Portland, 6 a.m. and 7.35 p.m. Island Pond, 11.58 a.m., 6.30 p.m. St. Hyacinthe, 8.45 a.m.

## CENTRAL VERMONT RAILWAY.

*Going South and East*—St. John's and St. Albans, 7.15 a.m., and 3.20 p.m., 6.30 p.m. Boston, 7.15 a.m., 6.30 p.m. New York, *via* St. Albans and Troy, 7.15 and 3.20; New York, *via* White River Junction and Springfield, 6.30 p.m. Waterloo and Magog, 3.20 p.m.  
ARRIVE—From Boston and New York, *via* Springfield, 8.25 a.m. and 8.45 p.m. New York, *via* Troy and St. Albans, 8.25 a.m. and 10.10 p.m.

## SOUTH-EASTERN RAILWAY.

*Going South and East*—Boston *via* Newport, 8.30 a.m. and 6 p.m. ARRIVE FROM—8.45 a.m., 9.35 p.m. Suburban Train, for all points to Knowlton, 5 p.m. except Saturdays, when train leaves at 2 p.m. Arrive at 9.20 a.m. and 9.35 p.m.

## DELAWARE AND HUDSON RAILWAY.

*Going South*—New York, Troy, Rouse's Point and St. Johns, 7.15 a.m. and 3.20 p.m. ARRIVE FROM—8.45 a.m. and 11 p.m.

*For L*  
15 p.m.  
les, 5.45.  
Saturday  
p.m.; 1.  
St. Char  
5.25, 6.3  
Remi an  
a.m.  
Q., M.,  
Leave  
15 a.m.  
30 p.m.  
Station  
4 p.m.  
Quebec  
and St.  
SPECI  
afternoon  
Return  
arriving

BO  
a

Ord  
P. O.

Hon  
Fine A  
Boo

## SUBURBAN.

*For Lachine*—7, 7.55, 9.15 a.m. 12 noon, 3.30, 5, 6.15 p.m. St. Lamberts, St. Henri and Point St. Charles, 5.45, 7.05, 8.30 a.m., 12.10, 5.00, 6.10, 8.05 p.m. Saturday only 2 p.m. From Lachine, 7.25, 8.20, 10 p.m.; 1, 4, 5.25, 7 p.m. From St. Lamberts, Point St. Charles and St. Henri, 6.15, 7.45, 8.55 a.m.; 1.00, 5.25, 6.35, 8.45 p.m. Saturdays, only 2.40. For St. Remi and Hemmingford, 3.30 p.m., arrive from, 10.35 a.m.

## Q., M., O. &amp; O. RAILWAY—HOCHELAGA STATION.

Leave for Ottawa, 8.30 a.m., 5.15 p.m. Quebec, 9.15 a.m. 3 p.m., 10 p.m. St. Jerome and St. Lin, 5.30 p.m. Joliette, 5.00 p.m. Trains leave Mile-End Station ten minutes later. Sunday Train for Quebec, 4 p.m. ARRIVE—From Ottawa, 12.40 p.m., 9.25 p.m. Quebec, 6.30 a.m., 4.40 p.m., 9.35 p.m. St. Jerome and St. Lin, 9 a.m. Joliette, 8.15 a.m.

SPECIAL TRAIN leaves Hochelaga every Saturday afternoon at 2 p.m. for Calumet, calling at all Stations. Returning—Leave Calumet at 6.30 a.m. Monday, arriving at Mile-End 9 o'clock.

## CHARLES MCADAM, BOOKSELLER

and dealer in Chromos, Steel Plate  
Pictures, Fancy Goods, &c.

Orders by mail promptly attended to.

P. O. Box 1266, - - MONTREAL.

Honorary Secretary of the Royal Institution of  
Fine Arts, Edinburgh.

Book Room as usual at No. 9 Argyle Avenue.

Between p  
Between C  
City or D  
Letters  
will be ser

Canadi  
within the  
the Unite  
Postal  
transmiss  
dom, and  
Postal U

To pla  
States, 5

The P  
Canada,

and for  
cents.

Parcel  
not exce  
or 12 in  
marked  
by affixi  
in additi  
Parcel  
the limit  
to Britis  
States, w

STEAMBOAT TIME TABLE.

NAME OF STEAMBOAT.	TIME OF LEAVING MONTREAL.	WHERE FROM.
Alexandria.....	Thursday, Noon.....	Canal Basin.
Beauharnois.....	Daily, 1 p.m.....	Do.
Berthier.....	Tues. & Fri., 2 p.m., Sat., 3 p.m.	Foot Jacques Cartier Sq
Bohemian.....	" " Noon.....	Canal Basin.
Chambly.....	" " 2 p.m.....	Foot Jacques Cartier Sq
Merchants' Line.....	" " 2 p.m.....	Jacques Wharf (Canal.)
Montreal or Quebec....	Daily, 7 p.m.....	Foot Jacques Cartier Sq.
Persia.....	Friday, 7 p.m.....	Jacques Wharf, Canal.
*Prince of Wales.....	Daily.....	Lachine, 7 a.m.
Richeheu and Onta- rio Navigation Co....	} Daily, 9 a.m.....	Canal Basin.
Terebonne.....	} Daily, 7 p.m.....	Foot Jacques Cartier Sq.
Trois Rivières.....	Daily, 5 p.m., Sat. 5 p.m. Tuesday and Friday. 2 p.m....	Do. Do. Do.

\* From Montreal to Lachine by G. T. R., and return by "Prince of Wales," 50 cents; by "Prince of Wales" to Como and return same day, \$1.25; Carillon, \$1.25; Saturdays, \$1.00.  
Tickets by all above boats can be procured at the General Steamboat and Railway Offices, 264 and 266 St. James Street, corner McGill Street.

## POSTAGE RATE S.

### LETTERS.

Between places within the Dominion. 3 cts per  $\frac{1}{2}$  oz  
Between Canada and the U. S. . . . . 3 cts per  $\frac{1}{2}$  oz  
City or Drop Letters, for City Del. . . . 1 cent per  $\frac{1}{2}$  oz

Letters wholly unpaid cannot be forwarded, they will be sent to the Dead Letter Office.

### POST CARDS.

Canadian Postal Cards of one cent each circulate within the Dominion and without further charge, to the United States.

Postal Union Cards at 2 cents each, are issued for transmission to Newfoundland and the United Kingdom, and may be used for correspondence with all *Postal Union Countries*.

### REGISTERED LETTERS.

To places in Canada, 2 cents each ; to the United States, 5 cents each, in addition to the postage rate.

### PARCEL POST

The Postage on Parcels addressed to places in Canada, is as follows :

Not exceeding 4 oz., 6 cents.

“ “ 8 oz., 12 cents.

and for each additional 4 oz., or portion thereof, 6 cents.

Parcels intended to pass through the Mail, should not exceed 5 pounds in weight, or 24 inches in length, or 12 inches in breadth or thickness, and should be marked “ by Parcel Post.” Parcels may be registered by affixing a 5 cent Registered Letter Stamp thereto in addition to the Postage.

Parcels cannot be transmitted to any place beyond the limits of Canada, nor can any parcel be forwarded to British Columbia or Manitoba, via the United States, which exceeds in weight the limit of 2 lbs. 3 oz.

ESTABLISHED 1850.

ESTABLISHED 1850.



J. H. WALKER,

*DESIGNER*

ENGRAVER ON WOOD

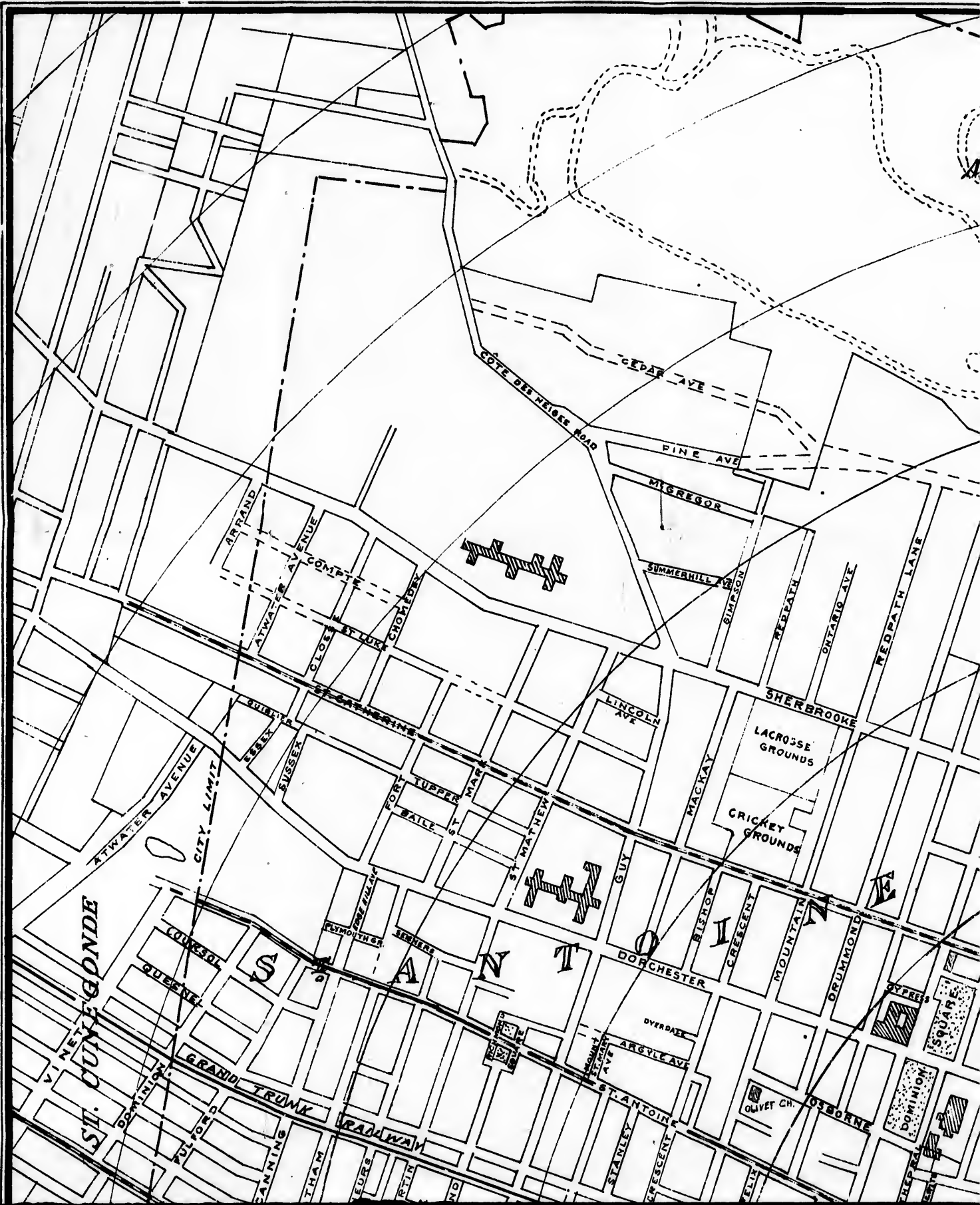
126 ST. JAMES STREET,

MONTREAL.

50.

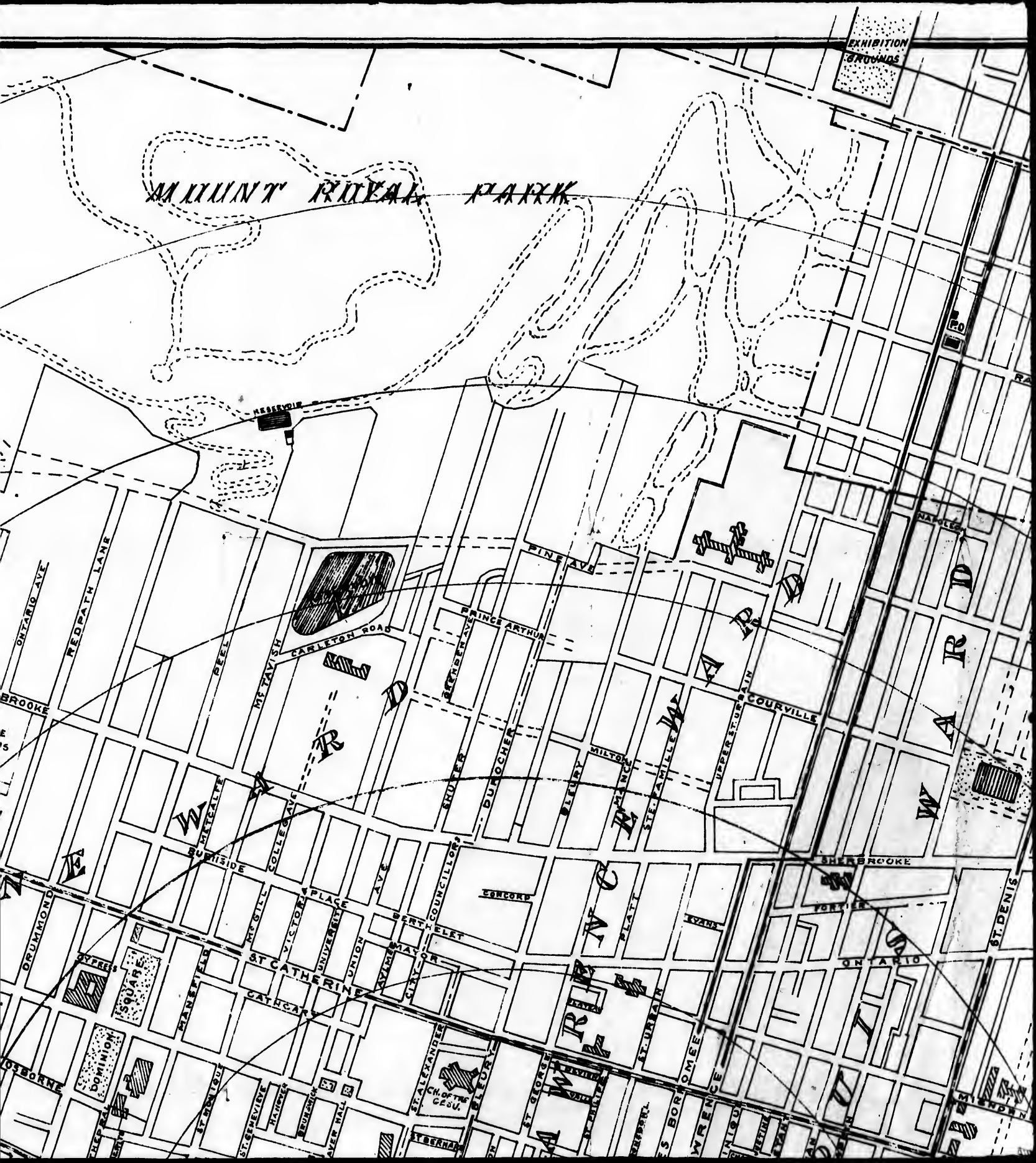
BC

665  
MILL  
266A



# MOUNT ROYAL PARK

EXHIBITION GROUNDS



ONTARIO AVE

REDPATH LANE

BROOKE

DRUMMOND

OSBORNE

W

TYPES SQUARE

DOMINION SQUARE

NESSBORN

MC TAVISH

COLLEGE

ST CATHERINE

ST DENIS



CARLETON ROAD

R

UNIVERSITY

CH. OF THE GESU

D

SMUTTER

CLAY

ST DENIS

PINE AVE

PRINCE ARTHUR

DUBOCHER

ST DENIS

ST DENIS

STURTEVANT

MILTON

STURTEVANT

STURTEVANT

STURTEVANT

STURTEVANT

STURTEVANT

STURTEVANT

STURTEVANT

STURTEVANT

STURTEVANT

STURTEVANT

STURTEVANT

STURTEVANT

STURTEVANT

STURTEVANT

STURTEVANT

STURTEVANT

STURTEVANT

STURTEVANT

STURTEVANT

STURTEVANT

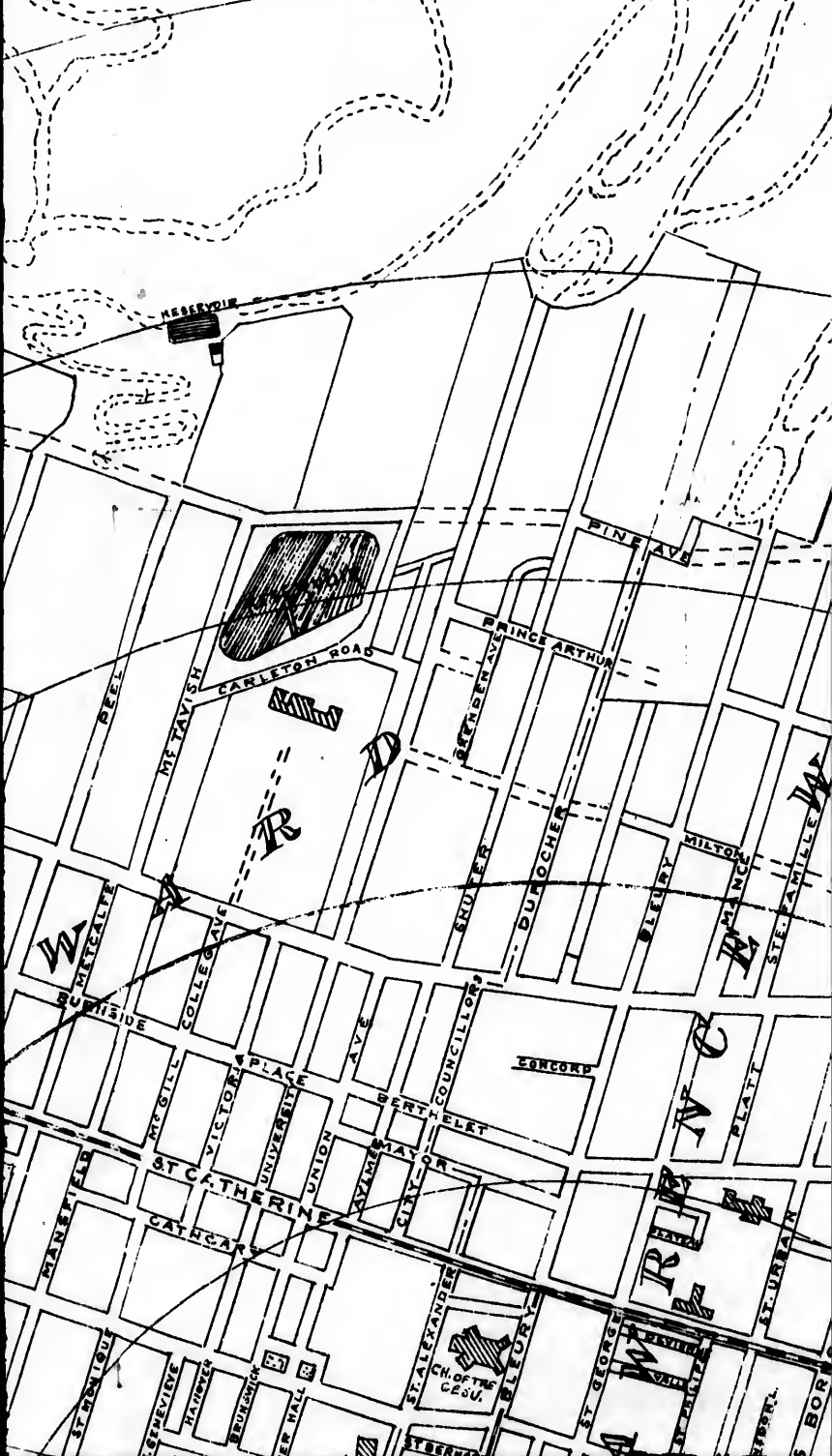
STURTEVANT

STURTEVANT

STURTEVANT



# MOUNT ROYAL PARK





EXHIBITION GROUNDS

XXXK

MO

RACHEL

ST J

NAPOLEON

ROY

PINE AVE



WARD

WARD

THUR

BLEURY

MILTON

ST. JAMES

COURVILLE

UPPER ST. JAMES

W.C.

PLATT

VAN

SHERBROOKE

FORTIER

ONTARIO

ST. DENIS

ST. GEORGE

ST. ANNE

ST. JEROME

ST. JEROME

OMEE

VARENCE

NIGOU

ST. JEROME

VAN

ST. JEROME

VAN

ST. JEROME

VAN

ST. JEROME

VAN

ST. JEROME

VAN

ST. JEROME

VAN

OF T  
MO



MOUNT ROYAL

AVENUE

MARIE ANNE

RACHEL

ST JEAN

BAPTISTE

CHERRIER

SHERBROOKE

ONTARIO

LAPONTAINE

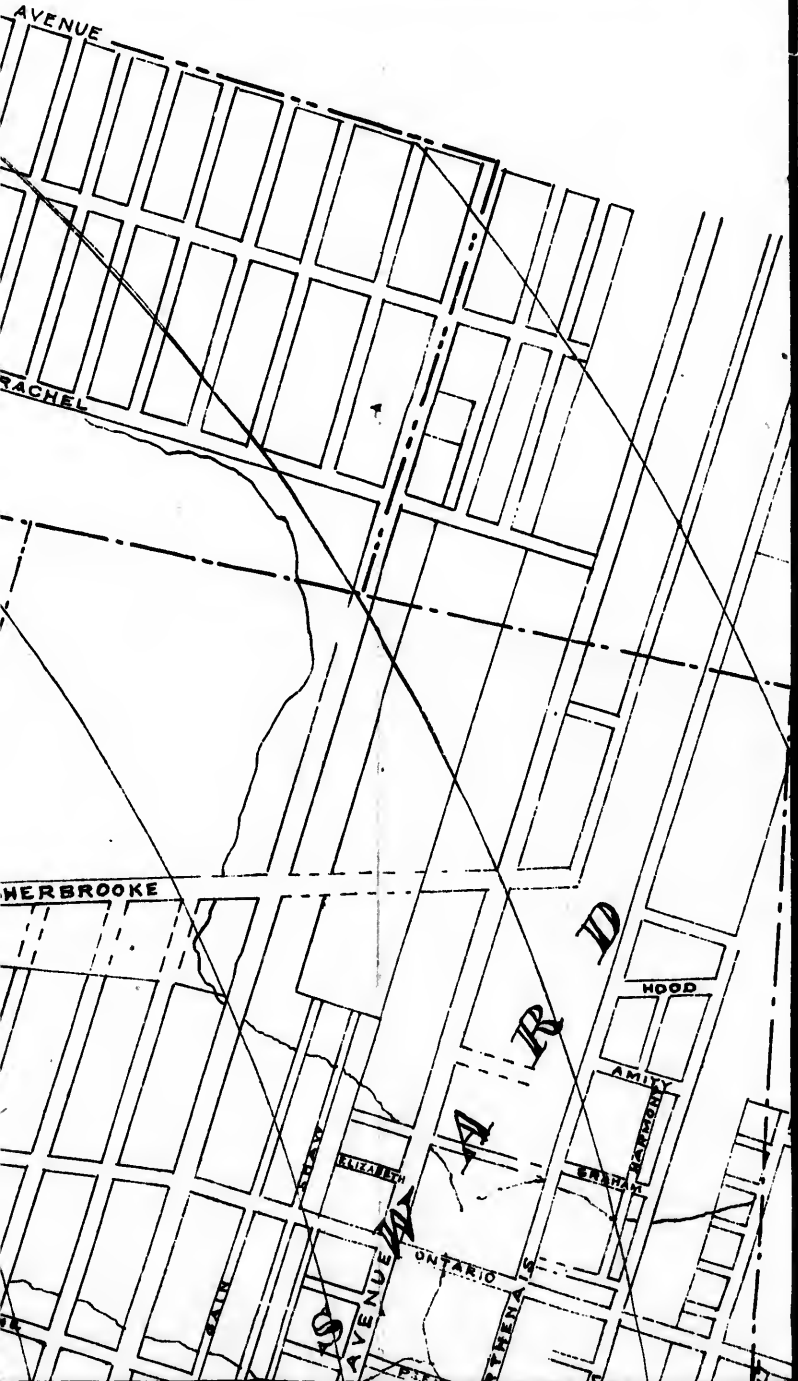
RUBIN

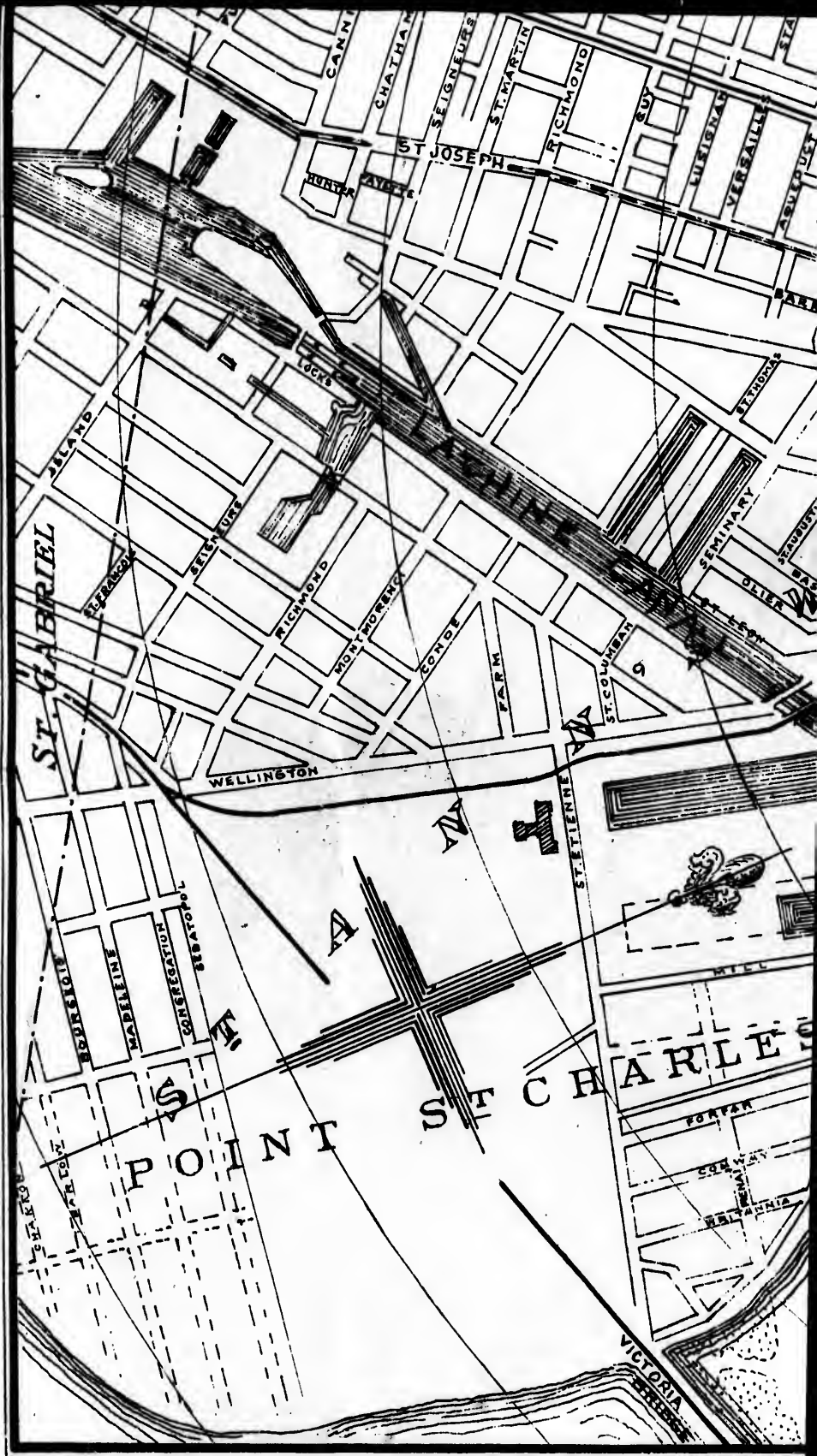
R  
D

— ≡ PLAN ≡ —  
OF THE CITY OF  
MONTREAL

---

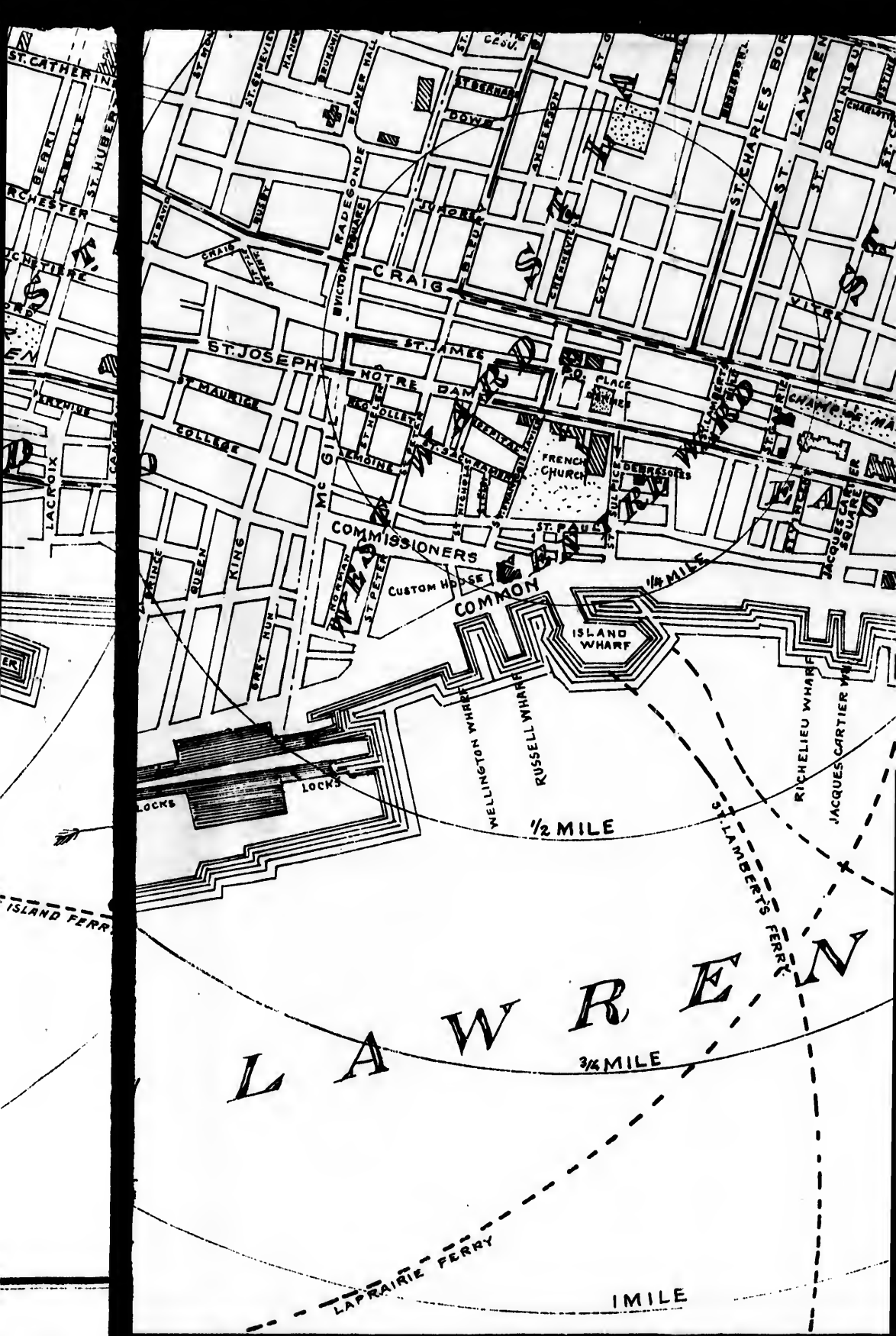
---











ST. CATHERINE

ST. BERRI

ST. HUBERT

ST. JOSEPH

ST. JAMES

ST. PAUL

ST. LAWRENCE

ST. CHARLES BOR

ST. DOMINIQUE

ST. ANNE

ST. MARY

ST. GEORGE

ST. JOHN

ST. JACQUES

ST. PETER

ST. LOUIS

ST. ANTHONY

ST. MARY

ST. ANNE

ST. CATHARINE  
ST. BERRI  
ST. HUBERT  
ST. JOSEPH  
ST. JAMES  
ST. PAUL  
ST. LAWRENCE  
ST. CHARLES BOR  
ST. DOMINIQUE  
ST. ANNE  
ST. MARY  
ST. GEORGE  
ST. JOHN  
ST. JACQUES  
ST. PETER  
ST. LOUIS  
ST. ANTHONY  
ST. MARY  
ST. ANNE

WELLINGTON WHARF  
RUSSELL WHARF  
RICHIEU WHARF  
JACQUES CARTIER WHARF  
ISLAND WHARF  
COMMISSIONERS  
CUSTOM HOUSE  
COMMON  
FRENCH CHURCH  
ST. PAUL  
ST. JACQUES  
ST. ANNE  
ST. MARY  
ST. GEORGE  
ST. JOHN  
ST. JACQUES  
ST. PETER  
ST. LOUIS  
ST. ANTHONY  
ST. MARY  
ST. ANNE

LAWREN  
1/4 MILE  
1/2 MILE  
3/4 MILE  
1 MILE  
ISLAND FERRY  
LAPRAIRIE FERRY  
ST. LAMBERT'S FERRY  
JACQUES CARTIER WHARF  
RICHIEU WHARF  
RUSSELL WHARF  
WELLINGTON WHARF  
ISLAND WHARF  
COMMISSIONERS  
CUSTOM HOUSE  
COMMON  
FRENCH CHURCH  
ST. PAUL  
ST. JACQUES  
ST. ANNE  
ST. MARY  
ST. GEORGE  
ST. JOHN  
ST. JACQUES  
ST. PETER  
ST. LOUIS  
ST. ANTHONY  
ST. MARY  
ST. ANNE





VIGER GARDEN

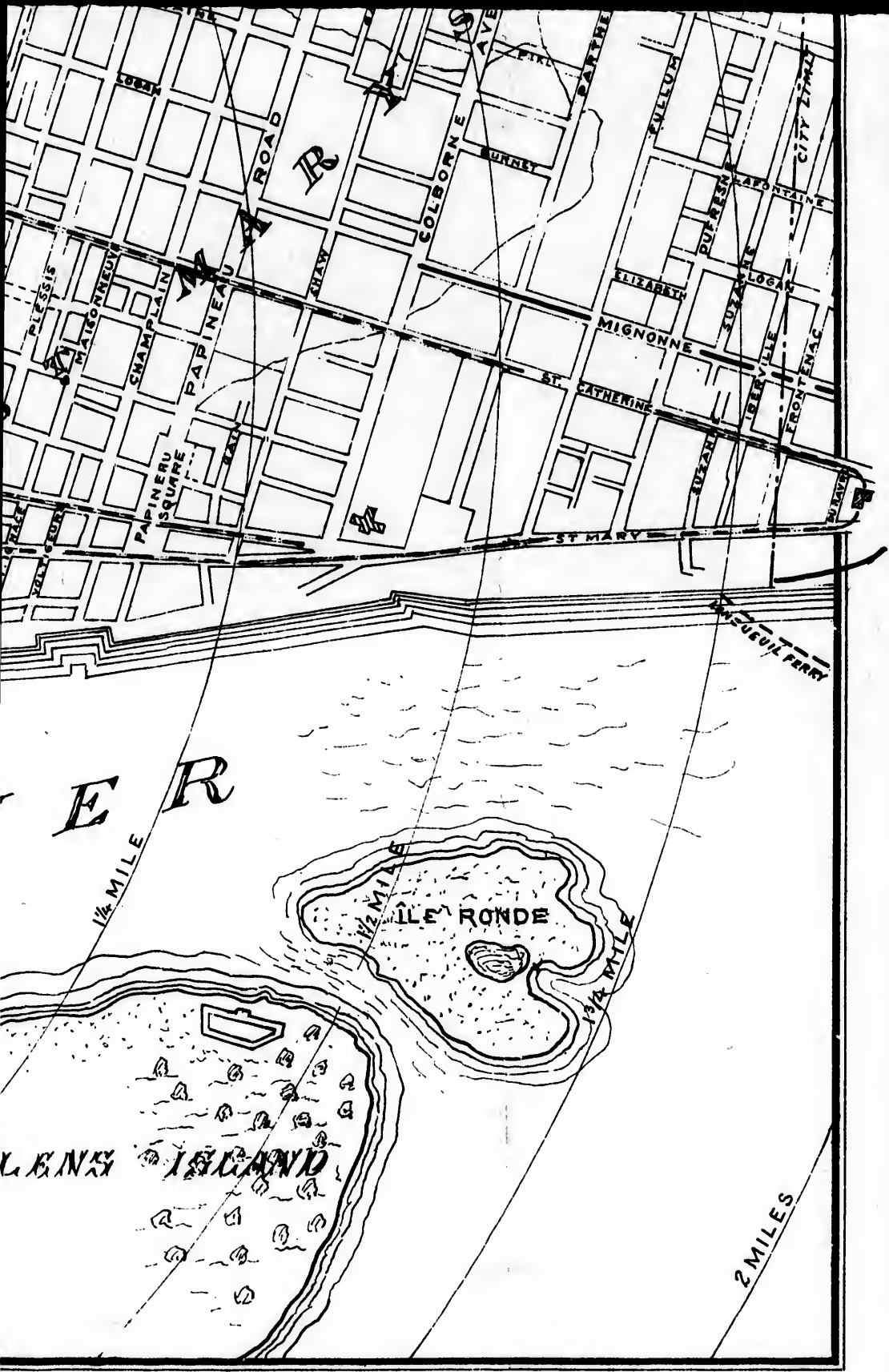
VICTORIA PIER

VICTORIA RIVER

ST. HELENS ISLAND FERRY

ST. HELENS ISLAND

1/4 MILE



1844

PAPINEAU  
PAPINERU  
ISQUIRE

ER

1/4 MILE

1/2 MILE

ILE RONDE

1/4 MILE

LENSY ISLAND

2 MILES

FERRY

PLINIS  
MALSORNEU  
CHAMPLAIN  
PAPINEAU  
COLBORNE AVE  
URNEY  
PARTRIE  
MUELUM  
ELIZABETH  
MIGNONNE  
ST. CATHERINE  
SUFAN  
LIBRYVILLE  
FRONTENAC  
CITY STAD  
PUPRESNA  
LAFORETTE

L. ROBINSON'S

FASHIONABLE

Tailoring Establishment,

31 BEAVER HALL TERRACE.

---

ENGLISH, SCOTCH AND

FRENCH SUITINGS,

TROUSERINGS, OVERCOATINGS,  
AND DIAGONALS.

---

Twenty per cent. lower than any other first-  
class Establishment.

---

*GENTLEMEN PLEASE CALL AND INSPECT GOODS  
BEFORE ORDERING ELSEWHERE.*

---

SUITS MADE ON SHORT NOTICE.

