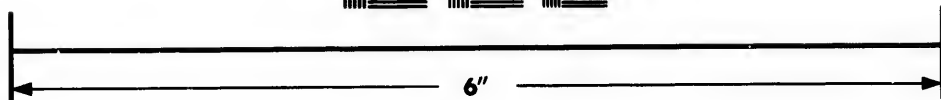
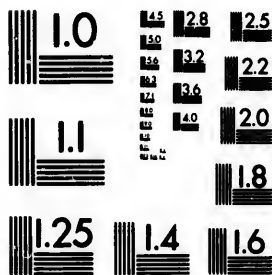


**IMAGE EVALUATION
TEST TARGET (MT-3)**



**Photographic
Sciences
Corporation**

23 WEST MAIN STREET
WEBSTER, N.Y. 14580
(716) 872-4503

**CIHM/ICMH
Microfiche
Series.**

**CIHM/ICMH
Collection de
microfiches.**



Canadian Institute for Historical Microreproductions / Institut canadien de microreproductions historiques

© 1982

Technical and Bibliographic Notes/Notes techniques et bibliographiques

The Institute has attempted to obtain the best original copy available for filming. Features of this copy which may be bibliographically unique, which may alter any of the images in the reproduction, or which may significantly change the usual method of filming, are checked below.

L'Institut a microfilmé le meilleur exemplaire qu'il lui a été possible de se procurer. Les détails de cet exemplaire qui sont peut-être uniques du point de vue bibliographique, qui peuvent modifier une image reproduite, ou qui peuvent exiger une modification dans la méthode normale de filmage sont indiqués ci-dessous.

- Coloured covers/
Couverture de couleur
- Covers damaged/
Couverture endommagée
- Covers restored and/or laminated/
Couverture restaurée et/ou pelliculée
- Cover title missing/
Le titre de couverture manque
- Coloured maps/
Cartes géographiques en couleur
- Coloured ink (i.e. other than blue or black)/
Encre de couleur (i.e. autre que bleue ou noire)
- Coloured plates and/or illustrations/
Planches et/ou illustrations en couleur
- Bound with other material/
Relié avec d'autres documents
- Tight binding may cause shadows or distortion along interior margin/
La reliure serrée peut causer de l'ombre ou de la distortion le long de la marge intérieure
- Blank leaves added during restoration may appear within the text. Whenever possible, these have been omitted from filming/
Il se peut que certaines pages blanches ajoutées lors d'une restauration apparaissent dans le texte, mais, lorsque cela était possible, ces pages n'ont pas été filmées.
- Additional comments:/
Commentaires supplémentaires:

- Coloured pages/
Pages de couleur
- Pages damaged/
Pages endommagées
- Pages restored and/or laminated/
Pages restaurées et/ou pelliculées
- Pages discoloured, stained or foxed/
Pages décolorées, tachetées ou piquées
- Pages detached/
Pages détachées
- Showthrough/
Transparence
- Quality of print varies/
Qualité inégale de l'impression
- Includes supplementary material/
Comprend du matériel supplémentaire
- Only edition available/
Seule édition disponible
- Pages wholly or partially obscured by errata slips, tissues, etc., have been refilmed to ensure the best possible image/
Les pages totalement ou partiellement obscurcies par un feuillet d'errata, une pelure, etc., ont été filmées à nouveau de façon à obtenir la meilleure image possible.

This item is filmed at the reduction ratio checked below/
Ce document est filmé au taux de réduction indiqué ci-dessous.

10X	14X	18X	22X	26X	30X
<input type="checkbox"/>	<input type="checkbox"/>	<input checked="" type="checkbox"/>	<input type="checkbox"/>	<input type="checkbox"/>	<input type="checkbox"/>
12X	16X	20X	24X	28X	32X

The copy filmed here has been reproduced thanks to the generosity of:

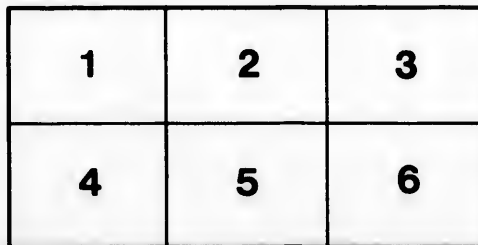
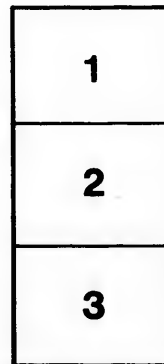
Library of the Public
Archives of Canada

The images appearing here are the best quality possible considering the condition and legibility of the original copy and in keeping with the filming contract specifications.

Original copies in printed paper covers are filmed beginning with the front cover and ending on the last page with a printed or illustrated impression, or the back cover when appropriate. All other original copies are filmed beginning on the first page with a printed or illustrated impression, and ending on the last page with a printed or illustrated impression.

The last recorded frame on each microfiche shall contain the symbol \rightarrow (meaning "CONTINUED"), or the symbol ∇ (meaning "END"), whichever applies.

Maps, plates, charts, etc., may be filmed at different reduction ratios. Those too large to be entirely included in one exposure are filmed beginning in the upper left hand corner, left to right and top to bottom, as many frames as required. The following diagrams illustrate the method:



L'exemplaire filmé fut reproduit grâce à la générosité de:

La bibliothèque des Archives
publiques du Canada

Les images suivantes ont été reproduites avec le plus grand soin, compte tenu de la condition et de la netteté de l'exemplaire filmé, et en conformité avec les conditions du contrat de filmage.

Les exemplaires originaux dont la couverture en papier est imprimée sont filmés en commençant par le premier plat et en terminant soit par la dernière page qui comporte une empreinte d'impression ou d'illustration, soit par le second plat, selon le cas. Tous les autres exemplaires originaux sont filmés en commençant par la première page qui comporte une empreinte d'impression ou d'illustration et en terminant par la dernière page qui comporte une telle empreinte.

Un des symboles suivants apparaîtra sur la dernière image de chaque microfiche, selon le cas: le symbole \rightarrow signifie "A SUIVRE", le symbole ∇ signifie "FIN".

Les cartes, planches, tableaux, etc., peuvent être filmés à des taux de réduction différents. Lorsque le document est trop grand pour être reproduit en un seul cliché, il est filmé à partir de l'angle supérieur gauche, de gauche à droite, et de haut en bas, en prenant le nombre d'images nécessaire. Les diagrammes suivants illustrent la méthode.

ire
détails
es du
modifier
er une
filmage

ées

re

y errata
ed to

nt
ne pelure,
çon à

Fragment of text from the reverse side of the page, appearing as bleed-through. The text is arranged in approximately 15 horizontal lines and is largely illegible due to the high contrast and dark background. Some faint characters and symbols are visible, including what appears to be a decorative flourish or symbol at the bottom left of the fragment.

THE
FARMER'S ALMANACK.
FOR THE YEAR OF OUR LORD,
1831;

Being the Third after Bissextile, or Leap Year.

CALCULATED FOR THE MERIDIAN OF HALIFAX IN NOVA-
SCOTIA. BUT WILL SERVE FOR ANY PART
OF THE PROVINCE.

Containing, besides the large number of Astronomical Calculations
and the Farmer's Calendar for every month in the year, a
great variety of useful and entertaining matter.



“ Watch with nice eye, the steady rolling sphere,
The Equinoctial, and Sidereal year ;
The slow Precession, and the varying clime,
And trace with patient care the flight of Time.”



HALIFAX, N. S.

SOLD BY C. H. BELCHER.

A TABLE,

Shewing the Latitudes and Longitudes of Headlands, &c. on the Coasts of North America, Newfoundland, and Bermuda, from a series of observations made on the spot, in the years 1828, '29 and '30, by Mr. John Jones, Master, and Mr. Horatio Jauncey, Mate, of H.M. Ship Hussar, and other Officers of the North American Squadron:—Halifax being considered as the Meridian.

PLACE OF OBSERVATION.	Longitude. North	Longitude West of Greenwich.	Variation Westerly.
NOVA-SCOTIA AND GULPH OF ST. LAWRENCE.			
Halifax, Naval Yard, (Meridian)	44 39 26 2	63 37 48	17 10 30
Maugher's Beach, (Light House)	44 36 2	///////	
Sambro Light House	44 26 17	63 35 16 2	16 45
Shut-in-Island, S W. End	44 36 35	63 17 48	
Jedore Head,	44 40 5	63 5 10 5	
Tangier Island, (off Tangier Har- bour)	44 44 28	62 41 7 5	
Outer Beaver Island, (S.E. Point)	44 48 24	62 21 43	
Green Island, (Country Harbour, S. Point)	45 4 55	61 34 49 5	
Berry Head (near Torbay)	45 10 44 3	61 21 9	
White Head (off White Haven)	45 10 17	61 9 49 5	
Canso Light House,	45 19 33	60 58 30	
Eddy Point (Gut of Canso)	45 30 25	61 16 54	
Cape St. George, (ditto)	45 51 22	61 55 12	
Pictou Island, (South-side)	45 47 52	62 37 33	19 35
Pictou Harbour,	45 41 56 7	62 42 0	19 0
Pictou Academy,	45 40 20	62 44 28	19 0
Cape Prospect. (Extreme Point)	44 26 38	63 46 39	16 10
Point Rose (Malaguash Bay)	44 18 7	64 15 33	16 15 W
Cape Lehave (South Point)	44 11 8	64 23 43 8	15 9
Lehave Rock	44 10 50	64 22 24 8	
Indian Island (South Point)	44 9 40	64 26 51	15 15
Metway Head, Metway Harbour	44 6 24	64 35 9	14 59
Liverpool, Light House	44 1 52	64 40 49 8	14 43
Western Head, Liverpool Bay,	43 59 13	64 42 34 8	14 43
Little Hope Island	43 48 34	64 49 48	14 1
Easternmost Rugged Island, S. E. Point	43 41 14	65 3 42 0	
Long projecting point between Rugged Island Harbour and Green Harbour	43 39 40	65 11 28 6	13 41
Shelburne, Light House	43 37 31	65 18 40 5	
Sandy Point, Shelburne Harbour	43 41 57	65 22 11	12 58
Cape Sable, South Point	43 23 57	67 38 3	12 24
South-Sea Island, South Point,	43 23 51	65 59 42	14 0
Ditto, North Point	43 26 22	66 1 35	14 0
Sable Island, East End	43 59 15 7	59 48 17	
Ditto, West End	43 56 30	60 18 34	
Just aux Corpe Island, south point.	45 58 10	61 37 51	20 40
Port Head, Cape Linzee,	45 59 31	61 36 15	21 14

&c. on
Bermuda,
the years
Mr. Horar-
Officers
ing con-

Variation
Westerly.

17 10 39

16 45

5

5

5

5

5

5

5

5

5

5

5

5

5

5

5

5

5

5

5

Ship Harbour, Gut of Canso	45 36 23	61 21 43	19 16
Cape Hinchinbroke, a small Island off the Cape	45 34 29	60 42 86	20 11
Green Island, off Isle Madame	45 27 47	60 57 48	18 30
Cape Portland,	45 47 57	60 7 36	
Louisburg, Ruins of the old Light	45 53 31	59 59 48	
Cape Breton, extreme point,	45 56 26	59 50 15	
Scattery Island, East Point	46 1 19	59 43 29	
Cape Granby, extreme point	46 9 18	59 53 0	22 27
Cape North, N.E. point, Breton Island,	47 2 13	60 26 53	23 30
Bona Venture Island, N.W. Point,	48 29 30	64 13 37	3
Douglas Town, south end of the Beach,	48 46 33	64 25 18	20 40
Cape Gaspe, south east point,	48 45 14	64 13 38	21 38
Cape Tormentine, north east point	46 7 38	63 51 41	7
Point Escuminac, N. E. point,	47 5 1 8	64 53 30	3
Point Miscou, N.E. point,	48 1 27	64 35 49	5
Cape Traverse,	46 13 37	63 42 47	
Prince Edward Island, west point	46 37 48	64 24 21	8
Ditto, east point,	46 27 35	62 0 8	21 0
Ditto, Cape North, N.E. point	47 4 20	64 4 15	6
Ditto, Cape Bear,	46 0 2	62 29 57	
Paspebiac, south point of the Beach	48 0 54	65 18 16	7 19 40
Anticosti, west point	49 52 29	64 36 54	9 22 55
Ditto, north point	49 57 38	64 15 1 4	
Ditto, east point	49 8 30	61 44 56	9 24 38
Mingan Harbour	50 17 35	64 5 32	7
Ditto Island, east side	50 13 7	64 12 11	4
Cape Rosier	48 50 41	64 15 24	
Point Des Monts, Light House	49 19 32	67 24 49	5
Ditto, extreme point,	49 18 33	67 26 19	5
Magdalen Island, N. E. point	47 37 37	61 26 51	
Brion's Island, N.E. point	47 48 8	//////////	
Entry Island, W S W point	47 16 7	61 47 26	22 25
Bird Island, northernmost	47 50 28	61 12 53	
City of Quebec	//////////	71 16 25	5 12 54
St Paul's Island	47 12 33	60 11 24	23 45
BAY OF FUNDY.			
St. John, N. B.	45 15 0	66 6 19	
Patridge Island, Light House	45 13 36	//////////	
Beaver Harbour, south-west point of the entrance	45 3 12	66 47 28	
Navy Island, south east point	45 2 24	67 5 47	
Bliss Island, south-west point, Etang Harbour	45 0 15	66 54 27	
Head Harbour Light-house Campo Bello	44 56 50	66 56 58	
Grand Manan, north point	44 46 49	66 49 7	
Ditto, swallow-tail point	44 44 54	66 47 21	
Ditto, White Head Island	44 36 59	66 45 4	
Brier's Island, Light House	44 13 51	66 26 54	
Digby Light House	44 40 25	65 50 15	

20 40
21 14

NEWFOUNDLAND.

St. John's, Fort Townshend, -	47	33	33	8	52	45	10	7	
Cape Broyle, south point. - -	47	2	19	8	52	56	33		
Cape Race - - - -	46	40	27	53	8	6			
Virgin Rocks - - - -	46	26	15	3	50	56	35		
Trespassy, Point Powles, - -	46	43	11	8	53	27	0		
Placentia, Point Verde - -	47	13	51	1	54	6	16	7	
Blue Beach Point, Cape Chapeau									
Rouge, south 22, east 14 miles	46	54	16		55	28	40	7	
Cape Raye, extreme point -	47	36	49		59	21	0		
Port aux Basque, Road Island,	47	34	11		59	10	39	24 2	
BERMUDA.									
St. Catherine's Point - - -	32	23	13		64	41	25	8	
Dock Yard - - - -	32	19	1		64	54	18		
Wreck Hill - - - -	32	16	1		64	57	21		
Gibb's Hill, Flag Staff -	32	14	18		64	55	12		
North Rock - - - -	32	29	26		64	50	18		

CHARLES OGLE,

Rear-Admiral and Commander in Chief.

Hussar, at Bermuda, 15th May, 1830.

Signals made at Fort George when Vessels are coming up the Harbour.

One ball close for a square rigged vessel	A do over a do half hoisted for 7 do
One ball half hoisted for 2 do	A do under 2 do close for 8 do
Two do close for 3 do	A do between 2 do seperated for 9 do
Two do seperated for 4 do	A flag of any colour for 10 or more do
A pendant of any colour for 5 do	
A do under a ball for 6 do	

[The above are hoisted at the east or west yard arm, according to the quarter the vessel first appears in, with the addition of a ball at the centre of the yard, until the vessel can be seen, when one or more of the following descriptive colours will be hoisted at the mast head.]

- An Union for a flag ship, with or without a squadron.
- Do. with a red pendant over it, for a two decker.
- Do. with a blue pendant over it, for a frigate.
- Do. with a white pendant over it, for a small armed vessel.
- A red flag pierced white, for a packet.
- A plue pendant, for a merchant ship.
- A red do. for a merchant brig.
- A white do, for a topsail schooner or sloop.
- A blue and white flag, horizontally divided, neutral fleet.
- A white and blue pendant, neutral man of war.
- A blue flag, neutral merchant ship.
- A red, white and blue flag, an enemy's fleet.
- A red flag, an enemy's merchantman.
- An Union Jack over neutral or enemy's signals, vessel is detained, or prize.
- A white flag over any signal, vessel bears a flag of truce.

A ball at the mast head, vessel is on shore in distress.—
should immediate aid be necessary, guns are to be fired.

Explanation of Signals

Made on the Ensign Staff at Fort George, to denote the part
which vessels entering the harbour have arrived from.

A red flag from Great Britain.

A red and white do, the Mediterranean.

A red pendant, the continent of Europe.

A white and red pendant, Madeira, Canary, or Western Isles.

A blue flag, West Indies.

A blue pendant, Bermudas, Bahamas, or Turk's island.

A blue and white flag, United States.

A white flag, Newfoundland.

A red and white flag, horizontally divided, Quebec, or
Gulf of St Lawrence.

A blue and white flag, horizontally divided, New Bruns-
wick, or Bay of Fundy.

A white and blue pendant, vessel has an English mail on
board.

A white pendant, coasts of Nova Scotia and Cape Breton.

Repeat from Out Posts at Fort George.

For a square rigged vessel, two balls of one size.

A ship, a large ball at the end of the yard with a small ball
in the centre.

A lozenge in the centre close up, a sloop or schooner.

Do. half hoisted, two or more schooners.

Merchant's Private Signals--Port of Halifax.

BLUE, &c.—J H Tidmarsh, a blue flag.

Joseph Allison & Co. } a blue burgee.
E. Collins & Co

A Belcher & Co. a blue flag crossed white.

James Foreman, jr do crossed white diagonally.

S, Cunard & Co. do. centre a white star.

Wm. Pryor & Co. a blue and white flag, blue uppermost.

M. Richardson, a blue and red flag, blue next the mast.

Wm Story, a blue flag, centre a white square.

John Clark. do crossed white diagonally.

George P Lawson, a blue and white chequered flag

Wm Deblois, a blue flag bordered white, letter D. in the
centre enclosed by two triangles reversed.

G. & A. Mitchell, a blue and white flag, blue uppermost.

Conrad West, a blue burgee, centre a white star.

RED, &c,—D, & E. Starr, a red flag.

J. & M. Tobin, a red flag, crossed white.

- Creighton & Grassie, do. crossed white diagonally.
 Deblois & Mitchel, do. centre a white square.
 Frasers & Co. red and white, white next the mast.
 John Brown, a red burgee, centre letter B.
 Boggs & Hartshorne, a red and white chequered flag.
 L'Epousie & Hall, a red and white chequered flag.
 C. & W Roche. a red flag, centre a white diamond.
 Thomas & Michael Tobin, red and white flag crossed diagonally.
 Thos Laidlaw, a red, white and red flag, red uppermost.
 Wm. B. Hamilton, blue, white and blue, do blue uppermost.
 James Oswald, blue, white and red flag, blue uppermost.
 WHITE, &c.—J & T Williamson, a white flag.
 J. L. Starr & Co. do centre a blue star.
 Fairbanks & McNab, do. crossed blue.
 John Tremain, do crossed blue diagonally.
 Halifax Packet Company, a white, blue, white and red burgee, white next the mast.
 Wm. & Robt Lawson, blue & white flag, crossed diagonally.
 Francis Stevens, blue, white and blue, blue next the mast.
 James Lyons & Co. white and red flag, white uppermost.
 Wm. Strachan, white, red and white ditto, white next the mast.
 Reynolds & Co. a white burgee, crossed red.
 Fiddes & Robertson, white and red flag, red uppermost.
 J & H Grant, a white flag, centre G S.
 Wm Stairs, a white flag pierced blue.
 John A. Barry, a white flag crossed red.
 YELLOW, &c.—Temple & Lewis Piers, a yellow flag, centre a blue ball.

The foregoing Signals are worn at the main. Upon vessels arriving in sight from the Light House so wearing a signal, a similar one is hoisted on the Telegraphic Staff, or at the yard arms of the Signal Staff at Fort George, with a pendant under it, descriptive of the class of vessels to which she belongs.

—o—
 Table of Rates of Pilotage of Vessels into, and out of, the Harbour of Halifax, established by "An Act to regulate the Pilotage of Vessels at the Port of Halifax"—9th Geo. IV. Cap. VII.

On Vessels of 200 Tons and under, - -	£2	0	0
Do. 200 Tons to 300 - - -	2	10	0
Do. 300 Tons and upwards -	3	0	0
His Majesty's Ships under 4th Rates -	2	0	0
Do. 4th, 5th, and 6th Rates -	2	10	0
Ships of the Line - - - -	3	0	0

On Vessels entering the Port, if boarded to the Northward of Herring Cove and Thrum Cap Island, one fourth less than the above rates

R
 H
 D
 Bi
 Ro
 Fu
 Ha
 Hi
 Fi
 Pe
 M
 Tr
 I
 Wa
 No
 Mr
 s
 Son
 mo
 Smi
 Nor
 M
 Gra
 Fow
 W
 Bra
 Sha
 Cran
 Harr
 Gibb
 Leon
 Brid
 Anna
 Ditm
 Wind
 Bea
 Digh
 Anna
 Clem
 Bear
 Read
 Ever
 mou
 Cosm
 mou

ROADS to the Principal Towns in the Province, with the names of Innkeepers and distances, and the roads to St. John and Fredericton, N.B.

Halifax to Digby..	Journie's, Scissiboo	1	Stewart's,	10
Donaldson's,	Cosman's, Clare,	4	Bent's, Amherst,	10
BirchCoveHotel	Ferrian's, Monta-	5	Wetherhead's.	}
Rockingham,	gan Cove,	15	fort Cumberland	
Fultz's,	Corning's, Bear	}		7
Hamilton's	River,		14	
Hiltz's	Parry's, Yarmouth	8	Hx. to Shelburne via	
Fitzmaunice's	Lakes	8	Lunenburg & Liv-	
Pence's,	Smith's—Richan's,	5	erpool.	
M'Lellan's,	Yarmouth Church,	5	Johnson's, Ham-	
Trefry's Newport.	Blanvel's, Casket	10	mond's plains,	12½
Road, (35)	Nickerson's, Apub-	8	Phillipps' Ingraham.	
Wallace's,	tic river,	8	River	13½
Northrup's	Spinney's, Apublic	5	Herberts Cove	7
Mrs Wilcox, Wind-	Bay.	5	Lovett's Chester	12
son, (45)	Larkin's, Pubnico	10	Gold river	6
Songster's, Fal-	Kendrick's, Bar-	13	Blockhouses	4
mouth bridge,	ington.	13	Martin's river	3
Smith's.	Powell's, riv. Clyde,	5	Ernst's, mushamush-	5
Northrup's	Dungraves, Shel-	16	river,	
Martin's	burne,	16	Mrs Zwickers,	}
Graham's	Horton,	6	Mehone Bay	
Fowler's		109	Beckman's, Lunen-	
Watt's	Kent-		burgh (70½)	6
Bragg's,	vile,	6	to the ferr at. La-	
	(72)		rove river.	7
Sharp's,	Hx. to Cumberland	11	across the ferry.	4
Crane's,	Eultz's,	11	Mrs Mannings	}
Harris's,	Fletcher's.	5	Petite Riviere	
Gibbon's,	Shultz's	5	Teale, Broad Cove	4
Leonard's,	Hall's	5	Mack's, mill village.	9
Bridgetown;	Keys'	3	Liverpool Town	8½
Annapolis town	McKeen's.	3		107
Ditmars,	Corbett's, Gay's	3	Port Mouton.	10
Winchester's,	Miller's, River,	3	Port Jolly.	5
Bear River.	Pollock's	9	Sable River	10
Digby, Ruggles	Polly's	7	Jordan River	8
	Mack's	7	Shelburne	7
	Witter's,	Tru-		147
	Blanchard's	ro,		
		(64)		
Annapolis to Shel-	Gourley's, Onslow,	5	To Cumberland via	
burne.	Yewill's, Lower	}	Parrsboro'	
Clement's Church,	Village,		14	Windsor,
Bear River Bridge,	Clark's, foot of	6	Parrsboro' by wa-	
Read's, Digby	Cob. Mountains	6	ter, Randall's,	130
Everet's, Wey-	Purdy's, top of do.	6	Fullerton's,	11
mouth road,	Hewson's, Riv-	9	Jenks'	½
Cosman's, Wey-	er-Philip,	9		
mouth Church		6		

d diag-
st.
rmost.
t.
ed bur-
gonally
ne mast.
most
next the
ost.
ag, cen-
vessels
signal, a
the yard
nt under
ngs.
out of,
Act to
f Hali-
0 0
10 0
0 0
0 0
10 0
0 0
North-
fourth

Furlong's Macan	Across the harbour	Ben Charters',	5
Bridge, 6½	to Walmsley Court	Harper's & Kelly's,	
Pugsley's Napan, 9	House, 1	bend of the Petti-	
Bent's, Amherst, 9	---	codiack river, 15	
Wetherhead's,	95½	Jacques'	15
Fort Cumberland, 7	Halifax to Antigo-	Major Scott's	3
	nish.	Blakeney's	7½
118	Blanchard's West	Pittfield's	10
Halifax to Pictou	River, Pictou, 92	Cougles, Sussex	
To Truro, 64	Chisholm's New	Vale 13½	
Lyons', 7	Glasgow 10	Baxter's Finger	
Archibald's, Sal-	Sutherland's, Meri-	Board 12	
mon River, 8	gomish, 7	Gilles. head of	
Stewart's, Mount	Murray's 10	Bellisle, 5	
Tom, 10	Mc Donald's Gulf	Cromwell's, 5	
Blanchard's West	Shore, 10	Watson's, Washa-	
River, 3	Mrs Simmond's and	domoak. 1	
Pictou, 10	Wolmesley's, 16	Nevers' & Oakley's	
		Gimseg, 7	
162		Tilly's, 10	
Halifax to Pictou via	The road over the	Widow Purley's 10	
Musquodoboit.	Antigonish moun-	Fredericton, 10	
Dartmouth Ferry, 1½	tains shortens the	292	
Preston, Bradley's 6	above distance a-		
Putnam's farm 5	bout 10 miles.	To St. John, N. B.	
Hart's, 5	To Fredericton, N.B.	Baxter's at the Fin-	
M'Keen's, 11	Bent's, Amherst 125	ger Board, 237	
Leckie's, 13	Well's, Hewson's,	from Baxter's to	
Archibald's 4	Tantramare	De Forrest's,	
Geddes' 4	Marsh 10	Hampton Ferry, 12	
Heny's, 4	Bass' "London Ta-	Beatie's, Hammond	
Dunbar's W. branch	vern," Sackville, 9	River. 10	
E. River, Pictou, 26	Morrison's "Dor-	St. John, N. B. 14½	
M'Kay's, 8	chester Arms,"	273½	
Fraser's, 7	Dorchester, 9		
	Joseph Black's 3		

*The Parrsboro' Packet sails regularly to Windsor and Horton every week, from the 1st April to Christmas; leaves Parrsboro' on Monday (wind and weather permitting) so as to be at Windsor on Tuesday, and will sail from thence (for Parrsboro') the first high water that happens at or after 8 o'clock in the morning—leaves Parrsboro' on Thursday, so as to be at Horton on Friday, and will sail from thence for Parrsboro' the first high water after 8 o'clock in the morning. The packet frequently goes to Windsor twice a week.

Table of Imports and Exports, for the Port of Halifax, in the years 1827, 1828, and 1829.

IMPORTS. FROM	Year	Vessels	Tons	Men,	Estimated Value. Sterling
Great Britain and Ireland,	1827	81	21,593	983	£ 307,907
	1828	105	27,368	1,298	311,100
	1829	101	27,092	1,170	418,604
West-Indies, //////////////	1827	278	26,761	1,520	190,309
	1828	299	27,724	1,655	163,548
	1829	312	31,990	1,862	173,493
Canada, New Brunswick, and Newfoundland, //	1827	1,304	63,563	3,283	117,818
	1828	1,140	59,918	3,545	129,544
	1829	1,276	65,071	3,814	100,155
Foreign States, //////////////	1827	159	17,898	934	312,603
	1828	156	20,116	985	381,237
	1829	169	23,109	1,125	443,887
Totals, //////////////	1827	1,822	129,815	6,720	928,637
	1828	1,700	135,126	7,483	985,429
	1829	1,858	147,172	7,971	1,133,139

EXPORTS TO.	Year	Vessels	Tons	Men,	Estimated Value. Sterling
Great Britain and Ireland,	1827	71	18,082	812	121,617
	1828	86	22,390	1,033	94,101
	1829	88	22,027	1,040	87,820
West Indies, //////////////	1827	288	28,438	1,725	195,738
	1828	332	31,803	1,896	224,221
	1829	331	34,473	2,056	261,610
Canada, New Brunswick, and Newfoundland, //	1827	1,344	74,827	3,930	136,342
	1828	1,250	70,744	4,093	179,010
	1829	1,228	73,026	4,016	189,103
Foreign States, //////////////	1827	154	17,412	915	36,922
	1828	156	19,591	936	52,479
	1829	203	23,798	1,179	51,135
Totals, //////////////	1827	1,857	138,759	7,382	491,619
	1828	1,824	144,528	7,953	549,811
	1829	1,850	153,324	8,291	589,768

rs'; 5
 Kelly's,
 the Petti-
 ver, 15
 15
 t's 3.
 7 1/2
 10
 Sussex
 13 1/2
 inger
 12
 ad of
 5
 s, 5
 Washa-
 1
 Oakley's
 7
 10
 urley's 10
 on, 10
 292
 ln, N. B.
 at the Fin-
 rd, 237
 xter's to
 est's,
 n Ferry, 12
 Hammond
 10
 N. B. 14 1/2
 273 1/2
 indsor and
 Christmas ;
 rather per-
 , and will
 high water
 ng—leaves
 on on Fri-
 ' the first
 ne packet

POPULATION OF NOVA-SCOTIA, TAKEN IN 1827.

County.	Population.				Total Souls.	In the year ending 30 Sept. 1817.			Total No. of Souls in each County.	Increase of Population in ten years.
	Males, exclusive of Labourers or Servants.	Females exclusive of Labourers or Servants.	Males, Labourers, or Servants.	Females Servants.		Births.	Marriages.	Deaths.		
County of Halifax	4,898	4,614	7,321	1,106	14,439	384	87	520	} 16,487	8,389
Remainder of Dis. Do.	3,606	3,597	315	185	7,703	370	105	157		
District of Colchester	6,954	6,291	408	296	13,949	501	70	115	} 8,737	5,212
Pictou	3,901	3,692	619	415	8,627	330	95	362		
County of Hants	4,756	4,654	557	261	10,208	339	71	115	} 7,155	3,053
King's	7,152	6,517	339	253	14,661	435	65	100		
Annapolis	5,860	5,597	273	288	12,018	635	129	124	} 8,440	3,578
Shelburne	1,936	1,915	251	123	4,225	153	26	77		
Queen's	4,531	4,288	315	271	9,405	331	78	123	} 6,628	1,127
Lunenburg	2,568	2,415	285	148	5,416	242	46	49		
Cumberland	6,255	5,775	431	299	12,760	508	126	89	} 3,043	2,373
Sydney										
Totals,	57,963	56,921	5,674	3,990	123,248	4,562	936	1,908	} 82,053	41,795

The Population of Capel Breton was returned in the Census of 1827, as amounting in the total to 18,700 } This Census is generally deemed inaccurate and understated.

The total Population of Nova Scotia is thus about 142,548 souls. }
 The registry of births, marriages, and deaths, is not considered accurate.

Account of the Quantity of Flour Brandy and Gin imported into Halifax, in the year ending 5th January, 1830.

From the United States,		Barrels. 1 bbls duty collected in Doublons at £3 7 2 each.	71,866	2,950	Flour	Wheat, bbls. 29,209—8012 9 6
Canada and N Brunswick,		5,564	3	Rye,	" 14,461—1989 15 3	
Total, - . -	77,430	2,953	Corn Meal,		4,051—557 0 3	

Brandy.		Gin.	Duty collected in Doublons at £3 7 2 ea.		
Pipes 169	Hhds. 119 } or 30,461	Pipes 42			
Bbls. 5	Gallons. } or 13,087	Hhds. 92	Bbls. 194	Gallons. £3,990	6 0
Case, 1	Demijons 10	Cases 41			

Total duties on Flour, Brandy and Gin, £14,549 11 0 paid in Doublons at £3 7 2 ea.

Population.					
Males, exclu-	Fe-				
In the year ending 30 Sept. 1817.				In-crease	Total No. of Po-

1861 in Census of Nova Scotia, taken with the Census of Agriculture

RELIGIOUS DENOMINATIONS IN NOVA-SCOTIA, TAKEN WITH THE CENSUS IN 1837.

County.	Church of			Methodists.	Baptists.	Lutherans.	Dissenters		Universalists.	Sandiminians.	Quakers.	Swedenburgers.	Antinomians.	Unitarians.	Jews.	Doubtful, or professing no Religion.	Total No. Souls in each County.
	Eng-land.	Scot-land.	Rome				from the Church of	Eng-land.									
County of Halifax, { Peninsula of Halifax, 6021 2900 3627 1164 680 - - - - - 23 - - - - - 3 21 14,459	3709 3732 2158 150 688 - 32 10,437	334 6283 136 50 868 - 39 7,703	257 12429 1013 - 250 13,940	1956 2722 599 1590 - 1753 - - - - - - - - - - - - - - - - 7 8,627	1507 2432 721 1080 - 4454 - 10,208	4900 406 2604 1776 4872 - 14,661	2116 2075 1326 1501 4872 - 26 13 - 21 - 75 - 3 - - - - - 12,018	865 217 183 1538 411 45 1231 - 9 - 60 - 2 - - - - - 4,925	2119 1916 437 844 1192 2897 - 9,405	768 646 417 - 5,416	4107 1473 7180 - 12,760	Totals, 28659 37225 90401 9408 19790 2968 4417 405 55 23 158 3 9 4 3 320 123,848					

The number (250) returned from the District of Pictou, under the column "Doubtful," is the same number as that returned in the Census of that District, as "Transient Persons without any fixed abode."

RELIGIOUS DENOMINATIONS IN NOVA-SCOTIA, TAKEN WITH THE CENSUS IN 1827.

Agriculture of Nova-Scotia, taken with the Census, in 1827.

County or District.	Land cultivated.	PRODUCE.						STOCK.		
		Wheat.	Grain.	Potatoes	Hay.	Horses	Horned	Sheep.	Swine.	
		Bushels	Bushels	Bushels	Tons.		Cattle.			
Peninsula of Halifax	1,020	123	4,105	23,601	1,021	399	458	39	493	
Remainder of Dis. of Do.	13,440	5,298	28,212	179,041	10,852	1,081	7,130	8,720	3,673	
District of Colchester . . .	29,135	18,044	64,078	292,235	16,756	1,440	10,177	12,713	6,912	
Pictou . . .	49,181	38,198	98,562	302,659	11,750	1,609	11,701	21,128	12,945	
County of Hants	37,531	18,520	45,328	227,948	19,977	2,486	9,475	14,863	5,927	
King's . . .	34,150	25,668	65,100	538,903	25,336	1,789	12,580	18,574	8,332	
Annapolis . . .	22,174	5,410	26,309	385,478	21,549	1,351	13,872	27,042	6,804	
Shelburne . . .	17,499	445	9,062	308,250	12,293	319	10,039	20,752	5,986	
Queen's . . .	5,630	1,362	3,476	52,817	3,517	163	2,436	2,737	1,941	
Lunenburg . . .	13,476	3,117	33,146	334,163	10,577	202	8,978	11,238	5,331	
Cumberland . . .	29,308	14,132	34,076	269,897	13,790	1,264	8,266	11,576	5,533	
Sydney . . .	39,465	21,919	38,173	363,288	15,794	848	15,706	24,349	7,705	
Totals.	292,009	152,861	449,627	3,278,280	163,212	12,951	110,818	173,731	71,482	

In 1827 the Returns of wheat were considerably less than the usual average. The Returns of Produce and Stock are supposed to be under-stated, owing to an idea of the country people that the General Census was connected with assessment.

Abstract of Dutiable Goods imported into the Province of Nova-Scotia. betwixt the first day of January, and the 31st day of Dec. 1829, for which the Duties have been paid and secured under the Act of the Provincial Legislature.

COUNTIES and DISTRICTS	Wine Gallons	Rum, Gin & Brandy Gallons	Molasses Gallons	Coffee Pounds	Sugar Cwts.	Amt. of Goods imported, liable to 33 per cent. & ten per cent duty.	Amount of Duties.
Halifax	30,099	692,911	211,793	54,537	16,754	£315,667 2 8	L.64,696 13 7
Liverpool	30	82,513	51,746	8,951	2,018	1,354 0 6	4,842 13 0
Lunenburg		62,971	41,304	7,396	1,150	230 5 0	3,586 17 8
Pictou	985	7,707	5,649	500	268	7,575 6 1	876 4 6
Yarmouth	680	40,028	24,606	3,172	919	224 15 10	2,399 9 7
Shelburne		10,950	5,553	3 00	266	79 8 7	264 16 5
County of Sydney	33	3,991	3,994	175	15	732 9 8	249 4 5
Digby		2,106	3,619		59	657 0 0	158 5 3
Annapolis	91	7,181	9,583	307	169	727 1 7	468 2 1
Weymouth		6,480	3,550		181	503 0 0	388 16 5
Colchester		7,771	5,786		98	165 0 0	438 8 1
Windsor		12,611	6,949		439	53 19 6	747 9 4
Sydney, C. B.	396	1,098	1,629	214	15	1,841 14 0	149 11 4
Arichat	142	7,890	8,849		42	6,878 2 10	708 13 6
Argyle		1,413	2,332		30	914 9 8	86 0 0
Cumberland	27	2,817	860		92	1,432 12 2	198 0 0
King's County	386	7,648	7,870		289	1,087 10 5	583 13 4
Port Hood		307	292				153 2 1
Total	32,869	968,393	395,757	75,552	22,739	340,944 18 6	L.70,941 2 1

DR *The Province of Nova-Scotia.*

1829—Dec. 31, To this Sum appropriated on account of Roads and Bridges, and other services, not yet drawn from the

Treasury,	£6198	9	6
Loan Certificates due sundry persons,	21,459	7	6
Notes in circulation	53,999	10	0
Balance of Shubenacadie Canal	2000	0	0
Ditto Surveyor General	400	0	0
Ditto Provincial Stud	203	4	6
Ditto Bounty on Iron	600	0	0
Ditto Light-House on Mauger's Beach	334	17	10
Ditto Encouragement for Whalers	1872	10	0
Ditto Grist Mills in Cape Breton	60	0	0
Ditto Post Communication	25	4	10
Ditto Trustees of Annapolis Academy	75	0	0
Survey of Boundary Line	400	0	0
Small Harbour in the Seal Islands	100	0	0
G. S. Harrington, Manufacture of Cloth	24	15	0
Stage Coaches for 1830, to the 1st June	300	0	0
Encouragement of the Fisheries for 1829, including balance undrawn, 1828.	5,470	9	0
Ditto Schools Do Do	6115	2	0
Isle of Sable	400	0	0
Light House on Cross Island	750	0	0
Build a Slip at Digby	28	0	0
Inhabitants of Yarmouth for a School House	150	0	0
Balance of Vote for the Officers of the Army	275	10	0
Ditto Hitchins & Crowell, Seal Islands	25	0	0
Bishop Fraser, for the support of Schools	50	0	0
Sheriff of Cape Breton	49	0	0
Protect, Barrington Beach	30	0	0
Settler between Musquodoboit and St. Mary's	50	0	0
Due Sundry Persons on account of the Province Buildings	142	13	10½
Ditto Commissioners of Light Houses	1362	10	9
	<u>£102,942</u>	<u>4</u>	<u>11</u>

Contra.**Cr.**

1829—Dec. 31. By Balance in the hands of the Treasurer	£12,543	8	8½
Loan to Dalhousie College	5000	0	0
Securities on the Estate of the Collector of Lunenburg	259	7	8
Due on Loan to King's County	286	7	0
----- Annapolis	1321	5	11½
Supposed Value of Copper, in charge of Commissioners of Province Building	450	0	0
By Securities in the hands of the Collector of Impost and Excise Halifax	£36,269	5	6
Deduct probable Drawbacks	9,269	5	6
	<u>27000</u>	<u>0</u>	<u>0</u>

Abstract of Dutiable Goods imported into the Province of Nova-Scotia, betwixt the first day of January, and the 31st day of Dec. 1829, for which the Duties have been paid and secured under the Act of the Provincial Legislature.

COUNTIES and DISTRICTS

Wine & Brandy Gallons

Rum, Gin & Molasses Gallons

Coffee Pounds

Sugar Cwts.

Amt. of Goods imported, liable to 33 per cent. & ten per cent duty.

Amount of Duties.

By Securities in the hands of the Out-Port Collectors, viz.

Shelburne	£530	9	7
Yarmouth	1675	14	10
Lunenburg	2974	15	2
Liverpool	4602	8	10½
Kings County	676	18	5½
Cumberland	198	0	0
Colchester	832	1	0
Pictou	1021	5	0
Annapolis	210	5	9
Sydney	361	2	11
Weymouth	745	17	6
Digby	221	0	6
Argyle	187	17	7
Arichat	1178	13	3½
Sydney, Cape Breton	185	19	7
Port Hood Do	37	6	10½
Hants	832	3	9
	£16472	0	8
Deduct probable Drawbacks	5972	0	8
		10,500	0 0
By Balance		45,581	15 5
		£102,942	4 9

General Account of Payments from the Treasury for the
Year 1829.

EXPENCE OF GOVERNMENT.

Attorney General,	£222	4	5
Solicitor-General	100	0	0
Treasurer	600	0	0
Secretary	120	0	0
Sheriffs	1350	3	8
Coroners	173	0	0
Post-Office	980	5	0
Postages	4	1	4
Printing	457	14	6
Contingent Vote	250	0	0
Law Expences	83	10	7--4,340 19 6

LEGISLATURE.

Speaker	200	0	0
Members	1953	0	0
Clerk	200	0	0
Extra Clerks	100	0	0
Chaplain	25	0	0
Officers	100	0	0

ctors, viz.
 7
 10
 2
 10
 54
 0
 0
 0
 9
 11
 6
 6
 7
 34
 7
 0
 9
 8
 8
 0,500 0 0
 5,581 15 5
 02,942 4 9

asury for the

Stationary	75	0	0
Contingencies	190	0	0
Clerk of Council	100	0	0
Extra Clerk	100	0	0
Chaplain	25	0	0
Officers	40	0	0
Contingencies	30	0	0
			C---3,138 0 0

REVENUE

Guager	235	0	0
Extra Waiters	434	17	6
Clerk to Comm'rs. Revenue	45	0	0
Drawbacks	364	1	0
			C---1,078 18 6

JUDICATURE

First Assistant Judge	600	0	0
Second ditto	600	0	0
Third ditto	600	0	0
Associate ditto	400	0	0
Travel	341	6	8
Expence of Conveyance	40	0	0
First Justice, Cape-Breton	500	0	0
First ditto, East Division	450	0	0
First ditto, West Division	450	0	0
First ditto, Middle Division	393	0	0
Master of the Rolls	600	0	0
Criminal Prosecutions	102	0	0
Law Library	10	0	0
			C--5,086 6 8

MILITIA.

Arms	£689	0	7
Adjutant-General	150	0	0
Adjutants	555	0	0
Inspecting Officer, East Division	250	0	0
Ditto Western do.	250	0	0
Ditto Cape-Breton	252	6	1
Troops Billeting, &c	186	10	2
			2--2,332 16 11

DEBT

Interest	1,220	14	4½
Expense of Notes	208	7	0
			0--1,429 1 4½

PUBLIC BUILDINGS.

Province House	975	9	8
Keepers	95	0	0
			0--1,070 9 8

SECURITY OF NAVIGATION

Light Houses			3,035 15 11
--------------	--	--	-------------

ROADS AND BRIDGES.

General Service	13,425	10	5
Particular Bridges	1,105	9	0
Altering Roads	768	4	11
Surveys	568	9	6

Casualty Vote	653	17	4½		
Great Post Roads	12,250	0	0		
Old Road Votes	935	3	8½		
Removal of Obstructions in Rivers	510	8	8½		
Packets	200	0	0		
Ferries	725	0	0	31,142	3 7½

EDUCATION.

Halifax Grammar School	150	0	0		
King's College	444	8	8		
National School	100	0	0		
Acadian do	100	0	0		
Catholic do	100	0	0		
Grammar Schools	175	0	0		
Common Schools	4,487	3	7	5,556	12 3

MISCELLANEOUS SERVICES.

Running County Lines	80	8	6		
Bounty on Dry Fish	4,529	11	0		
do on Cordage, T. & L.					
Piers	300	0	0		
Map of the Province	110	0	0		
Clerks of Assembly—Indexes	50	0	0		
Custom-House Clerks	73	10	0		
Overseers of Poor, Cornwallis	22	17	11		
Mary Crane	16	10	0		
Doctor Wiley	10	0	0		
Overseers of Poor, Parrsborough	35	0	0		
Provincial Stud	218	4	5½		
William Frieze	11	10	0		
Relief of Emigrants	1,228	5	5½		
Health Officer, Cape-Breton	12	10	0		
Transient Poor	600	0	0		
Bridewell	200	0	0		
Pension	200	0	0		
Indians	111	13	3		
Negroes	100	0	0		
Overseers of Poor, Yarmouth	35	0	0		
John Wiley, (Notes destroyed)	17	0	0		
Imperial Acts of Parliament	50	0	0		
Alexander Urpuhart	11	10	0		
Overseers of Poor, Digby	7	19	0		
Deputy Clerk of Crown	323	8	0		
Breakwater, Wilmot, two years	300	0	0		
Halifax Library	50	0	0		
Hon. Charles Morris	200	0	0		
Passage Collins Hill and Brat- tle Point	50	0	0		
Fox Island Fisheries	50	0	0		
Seal Island Establishment	25	0	0		
Aboiteau, Lawrence Town	50	0	0		

Breakwater, Lewis Head	100	0	0		
Clerks of the Peace	85	0	0		
Breakwater, Clare	49	0	0		
Aboiteau, La Planche River	300	0	0		
Whalers	1827	0	0		
Arisaig Pier	333	2	3		
Western Stage Company	450	0	0		
Shubenaccadie Canal	7000	0	0		
Keeper of Gunpowder.	20	0	0	19244	9 5

£77,455 13 10

PROVINCE NOTES.

Amount of Notes in Circulation, 31st Dec. 1829.	}	£39,027 10 0
Delivered the Treasurer in lieu of defaced Notes, &c.		
Ditto out of vote of credit for £15,000.	}	14,000 0 0
		64,999 10 0
Notes received and destroyed by the Committee,	}	11,000 0 0
Leaving in Circulation 31st Dec. 1829,		£53,999 10 0

Particulars of Custom-House Fees and Salaries in the Port of Halifax. — (See page 20.)

Collector, £2000. Comptroller, £850. Waiters and Searchers, £700. Warehouse Keeper, £300. Clerks, £600. Extra Clerks, £111 6 9. Tide Surveyors, £300. Locker, £73. Boatmen, £146. Tidesmen, £632 19 10½. Surveying Officer, £31 2 6. Contingencies, £144 7 2½. Total, £5888 16 3½.

ACCOUNT OF DUTIES, &c. COLLECTED FOR THE YEAR 1829.

PORTS.	Payments under Provincial Acts.				Collected at the Custom House.				Salaries.	Charge Collecting.														
	Excise.	Light Dues.	General Duties.	Tonnage.	Provincial Acts.	Under Statutes.	Old Custom House.	Provincial Revenue.																
Hullar,	26000	0	1062	14	1	15336	1	4011	5	9	2	181	16	11	1955	6	3	183535	11	64	3555	1	64	
Lanenburg,	2250	14	0	28	14	7					171	1	14	1241	19	14	5888	16	31	1875	0	0		
Liverpool,	2766	16	2	74	3	9	44	8	9	242	18	53	200				200			388	4	101		
Shelburne,	467	12	9	45	12	0	24	0	114	19	12	3	100				100			599	3	9		
Barrington	0	0	0				12	10	0				100				100			79	2	7		
Argyle,	42	0	0	15	11	1				14	0	0	100				100			7	5	6		
Yarmouth,	1279	17	7	19	10	4	5	15	1	100	8	104	200				200			246	4	3		
New Edinburgh,	135	0	0	30	5	3				14	15	10	100				100			23	5	9		
Dieby,	141	9	2	16	4	0				10	8	4	120				120			24	8	0		
Annapolis,	340	0	0	21	15	4	27	9	8	35	1	7	150				150			58	13	0		
Cornwallis,	650	8	5½				11	19	5	19	2	3	150				150			114	14	8		
Hanis,	395	15	3	22			11	1	11	16	18	1	100				100			68	5	4		
Cumberland,	116	14	3										100				100			11	1	1		
Douglas and Colchester,	237	11	10	13	5	3	21	19	74	24	1	4	120				120			41	1	1		
Pictou,	1430	18	6½	46	3	10	454	17	9	33	1	0	200				200			246	16	6		
Guysborough,	187	14	3	199	19	2				11	18	0	120				120			82	7	7		
Port Hood, C. B.	39	7	4																	5	18	0		
Arcthat,	1264	12	11	108	5	7														135	3	7		
Sydney.	319	11	8	63	11															47	18	8		
New-Brunswick,				220																616	15	24		

DR. THE TREASURY OF NOVA-SCOTIA. CR.

<p>For Balance last Year Received from Collectors Impost and Excise Received from Collectors, Light Duties Received from Officers of Cus. toms Received from Loans repaid Provincial Notes issued Less cancelled Miscellaneous</p>	<p>£11,124 17 15 38,015 19 2 1,982 15 3 22,034 14 8 1,755 16 4 £25,972 14,972 0 0 113 0 0 <u>89,999 2 64</u></p>	<p>By Payments per Account, viz Administration of Government Legislature Judicature Revenue charges Militia do Public Debt Security of Navigation Road Service Education Public Buildings Miscellaneous Balance due</p>	<p>£4,340 19 6 3,138 0 0 5,086 6 8 1,078 18 6 2,332 16 11 1,429 1 44 3,035 15 11 31,142 3 74 5,556 12 8 1,070 9 8 19,244 9 5 12,543 8 74 <u>£89,999 2 64</u></p>
--	--	---	--

ACCOUNT OF DUTIES, &c. COLLECTED FOR THE YEAR 1829.

PORTS.	Payments under Provincial Acts.	Collected at the Custom House.	Salaries, Charge Collecting.
Impost and Light Du- General Light Light	General Light Light	Tonnage, Provincial Under Old House	Provincial Revenue

Signs of the Zodiac.

♈ Aries--head.	♎ Libra---reins.
♉ Taurus---neck.	♏ Scorpio---secrets.
♊ Gemini---arms.	♐ Sagittarius---thighs.
♋ Cancer---breast.	♑ Capricornus---knees
♌ Leo---heart.	♒ Aquarius---legs.
♍ Virgo---belly.	♓ Pisces---feet

The Planets and their relations.

☉ The Sun.	♀ Venus.	♃ Jupiter.
☾ The Moon.	♁ The Earth.	♄ Saturn.
☿ Mercury.	♂ Mars.	♆ Georgian.
♁ A Planet's ascending node.		
♂ The descending node.		
♄ Conjunction, or Planets situated in the same longitude.		
□ Quadrature, or Planets situated in longitudes differing 3 signs from each other.		
♁ Opposition, or Planets situated in opposite longitudes, or differing 6 signs from each other.		

The Planet Venus ♀ will be evening star till Octr. 8th. and then morning star. This planet will be eclipsed by the moon on the 13th Feb.

Jupiter ♃ will be evening star to Jan. 20th, then morning Star to Aug. 10th, then evening star. This planet will be eclipsed by the moon on the morning of 29th June, and on the eve of 9th Dec.

Chronological Cycles for 1831.

Dominical Letter	B	Solar Cycle	20
Lunar Cycle or golden numb.	8	Roman Indiction	4
Epact	17	Julian Period,	6544

Ember days.

February 23, 25, & 26	September 21, 23 & 24
May 25, 27, & 28	December 14, 16, & 17

Moveable Feasts

Septuagesima Sunday Jan. 30	Low Sunday April 10
Qinq. or Shrove Sun. Feb. 13	Rogation Sunday, May 8
Ash Wed. or 1st day Lent Feb 16	Ascen. Day or Holy Th. May 12
Mid. Lent Sun. March 13	Whit Sunday, May 22
Palm Sunday, March 27	Trinity Sunday, May 29
Easter Day, April 3	Advent Sunday, Nov. 27

Holidays at the Public Offices.

1st Jany. New Year's Day.	24th—Whit Tuesday
17th March, St. Patrick	26th June, K. William IV's access.
1st April, Good Friday	13th Augt. Queen Adelaide's b. d.
4th—Easter Monday	21st Augt. K. William IV's birth day
5th—Easter Tuesday	5th Nov. Powder Plot
23d—St. George	30th—St Andrew
23d May, Whit Monday	25th Decr. Christmas Day

THE COMET.

(CONTINUED FROM OUR LAST.)

“ ————— Yet, yet,
 With every coming night the terrible star
 Expanded : men had now no thought but that ;
 All occupations were laid by; the earth
 Was left untilld; the voyagers on the deeps
 Forsook their ships, and got upon the land,
 To wait the dread event.”

The Comets of *Encke* and *Biela* will, it is expected, return in the year 1832, both having assigned to them, by some of the continental philosophers, the direful task of causing the destruction of this world. The Comet of *Encke*, (being the one referred to in our last as the comet of 1819,) was first observed in 1786 ; it was seen again in the years 1795 and 1805 ; no idea, however, had been formed that it was the same body ; its identity was not discovered till the year 1819, and its orbit computed by Professor *Encke*. At its return in 1822 it was invisible in Europe, but re-discovered by *M. Rumker* at *Paramatta*, *New South Wales*. In 1825 it was recognized in both hemispheres, and in the return of 1828 it was visible in October to beyond the middle of December ; it passed its perihelion on the 10th Jan. 1829, and its aphelion in August 1830 ; it is now returning to the Sun with its velocity daily augmenting, again to revisit these lower regions early in 1832.

The comet of *Biela* was visible near *Gemini* in Oct. 1830, and will pass its perihelion the 27th of November, 1832, but no apprehension need be entertained of any contact, for though it will in that year approach within 14,000 leagues of the earth's orbit, it will occur when our planet is in a distant part of its course ; this Comet is of the same nebulous nature as the *Encke*, and its period is 2461 days.

The Comet of *Halley*.—The return of this Comet in 1759 verified *Dr. Halley's* prediction, it is expected to be visible about the latter end of the year 1834, and to pass its perihelion 16th March, 1835.

Formerly these bodies were supposed not to be numerous, and only appearing at long intervals of time, but superior instruments in the hands of vigilant observers have penetrated dark regions hitherto unexplored, and unfolded many of the vast arcana of the universe ; the heavens are now found to be replete with cometary bodies, that the more splendid, as that of 1690 and 1811, are few in number when compared with those which like the *Encke* comet, dim, shadowy, unobtrusive,

are discovered only by an accidental position of the telescope when in search of other objects,—flitting like faint vapours in the field of view, yet moving onward as with conscious importance, to swell the harmony of the celestial spheres.

The most striking peculiarity of the Encke comet is the shortness of its period, (about 1203 days,) forming a remarkable contrast with that of 1811, the periodical time of which, is determined by the following celebrated astronomers, is :—

Calendrelli, - - - 3056 years.	Ferrer, - - - 3757 years.
Bessel, - - - 3383 „	Lemaur, - - - 4237 „

The Encke crossing the Earth's orbit 60 times in a century, the other when it approached the Sun in 1811, returning from a voyage of awful length through the vast fields of space, the duration of which was not measured by the circles of centuries, but by thousands of years, yet through the whole of its wondrous course, the solar influences,—the chain by which it was restrained—preventing its wandering off into the regions of space. It is not supposed that even this comet (1811) if not the most remote belonging to this system, or its period the most extended; one that appeared in 1763 has assigned it the astonishing period of 7734 years, but if the calculations of La Place are correct, that the limits of the solar system extend a hundred million times the earth's distance from the Sun, there is ample room for mightier movements than these referred to, and still to leave a vast void existing between the attraction of any neighbouring systems.

//////////
 EXPLANATION OF THE CALENDAR PAGES.

Left hand Page—First column contains the days of the month. Second, days of the week. Third, rising of the sun. Fourth, setting of the sun. Fifth, length of days in hours and minutes. Sixth, Sun's declination in degrees and minutes, taken from the nautical almanack. Seventh, Moon's rising or setting. Eighth, Moon's southing; the eighth column also gives the time of High water at Windsor, Horton, Parrsboro', &c. Ninth, Moon's place in the signs. Tenth, high water at Halifax.

Right hand Page.—First column, days of the month. Second, Holidays, Weather, &c. Third, Farmer's Calendar.

The top of the columns on each page shows the moon's phases, or the times of new and full moon, and of the first and last quarter or two quadratures with the sun.

SOLAR AND LUNAR ECLIPSES.

There will be **four** Eclipses this year. *two* of the **SUN**, and *two* of the **MOON**.

I. The first will be of the Sun, on Saturday 12th Feby. visible and nearly total. a small part only of the sun being visible at the greatest obscuration. It will be the greatest and most remarkable solar eclipse that has taken place for many years.—The earth at the time, will be near its Perchelion; and the moon not far from her apogee. The moon therefore being further *from*. and the sun nearer to the earth than is usual, the moon will not appear as large as the sun; this will cause a small ring of the Sun to be seen round the moon at the middle of the eclipse in all places where it is central

Beginning,	-	11 h. 34 m.	A. P.—A. M.		
Ecliptic ζ , or new \mathcal{D} ,		0	15	}	
Middle		1	3		} Apparent time,
Greatest obscurity		1	7		
End		2	32		

Quantity eclipsed, $11\frac{1}{2}$ digits on the \odot 's southern limb.— \mathcal{D} 's latitude, $42^{\circ} 15'$ North descending. If the atmosphere should be clear, it is probable that Several of the fixed stars will be seen. The planet Venus a little east, and Jupiter a little west of the sun, will also appear very brilliant.

II. The second will be of the moon on saturday 26th Feby, invisible as the moon will be below the horizon.

III. The third will be of the Sun, on Sunday 7th Augt at 5h. 19 m. afternoon yet on account of the moon's south latitude, it will not be visible in North America; but in the south Pacific Ocean, in the neighbourhood of the Society, Friendly, & Navigator's islands, in Latitude $26^{\circ} 36'$ S. and Longitude, $156^{\circ} 2'$ W. of London, it will be visible, central and total on the meridian. In New Holland, the Sun will rise totally eclipsed, and set totally eclipsed in South America.

IV. The fourth, and last, will be of the moon, on Tuesday					
23rd Augt. partly visible as follows H. M.					
Beginning	-	4	26	}	
Middle		5	43		} Apparent time in
Moon sits		5	50		
Ecliptic ζ		5	51		
End		6	58		

Digits eclipsed, $5^{\circ} 48'$ on the moon's north Limb, in the southern section of the earth's shadow.



Last ☾ 5th d. Gh. 40m eve. | New ☉ 13th d. 9h. 23m. eve.

D	D	☉	☉	Days'	Sun's	☾ R.	☾	☾'s	High
M	W	rises	sets	len'th	dec.S	& S.	south.	place.	water
1	Sa	7	38 4	22 8	44 23 3	8 16 2	27	heart	9 37
2	B	7	38 4	22 8	44 22 58	9 26 3	18	belly	10 28
3	M	7	38 4	22 8	44 22 52	10 24 4	6	belly	11 16
4	Tu	7	37 4	23 8	46 22 46	11 22 4	52	belly	morn.
5	W	7	36 4	24 8	46 22 40	morn. 5	34	reins	0 45
6	Th	7	35 4	25 8	50 22 33	0 21 6	18	reins	1 28
7	Fr	7	35 4	25 8	50 22 26	1 17 7	0	secrets	2 10
8	Sa	7	34 4	26 8	52 22 18	2 14 7	43	secrets	2 53
9	B	7	33 4	27 8	54 22 10	3 9 8	26	secrets	3 37
10	M	7	33 4	27 8	54 22 1	4 7 9	12	thighs	4 23
11	Tu	7	32 4	28 8	56 21 52	5 0 10	0	thighs	5 10
12	W	7	31 4	29 8	58 21 43	5 54 10	49	knees	6 0
13	Th	7	31 4	29 8	58 21 33	sets 11	39	knees	6 50
14	Fr	7	30 4	30 9	0 21 23	5 35	eve 30	knees	7 40
15	Sa	7	29 4	31 9	2 21 12	6 38 1	21	legs	8 31
16	B	7	28 4	32 9	4 21 1	7 45 2	11	legs	9 21
17	M	7	28 4	32 9	4 20 49	8 49 3	1	feet	10 11
18	Tu	7	27 4	33 9	6 20 37	9 54 3	50	feet	11 0
19	W	7	26 4	34 9	8 20 25	11 0 4	40	head	11 50
20	Th	7	25 4	35 9	10 20 13	morn. 5	30	head	evc 40
21	Fr	7	24 4	36 9	12 19 59	0 10 6	23	neck	1 32
22	Sa	7	23 4	37 9	14 19 46	1 19 7	15	neck	2 25
23	B	7	22 4	38 9	16 19 32	2 28 8	11	arms	3 21
24	M	7	21 4	39 9	18 19 18	3 34 9	10	arms	4 20
25	Tu	7	20 4	40 9	20 19 4	4 40 10	7	breast	5 17
26	W	7	19 4	41 9	22 18 49	5 39 11	5	breast	6 15
27	Th	7	18 4	42 9	24 18 34	rises. morn.	breast	7 2	
28	Fr	7	17 4	43 9	26 18 18	5 47 0	2	heart	8 46
29	Sa	7	15 4	45 9	30 18 2	6 53 0	55	heart	8 39
30	B	7	14 4	46 9	32 17 46	7 57 1	46	belly	9 15
31	M	7	12 4	48 9	36 17 30	8 59 2	34	belly	10 4

I Month



9h. 23m.eve.

C's place.	High water
heart	9 37
elly	10 28
elly	11 16
elly	morn.
eins	0 45
eins	1 28
ecrets	2 10
ecrets	2 53
ecrets	3 37
ighs	4 23
ighs	5 10
nees	6 0
nees	6 50
nees	7 40
egs	8 31
egs	9 21
ect	10 11
ect	11 0
ead	11 50
ead	evc40
eck	1 32
eck	2 25
rms	3 21
rms	4 20
reast	5 17
reast	6 15
reast	7 2
heart	8 46
heart	8 39
elly	9 13
elly	10 4



Winter. JANUARY begins on Saturday. 27.

The Sun, rejoicing round the earth, announced
Daily the wisdom, power, and love of God.

The Moon awoke, and from her maiden face,
Shedding her cloudy locks, looked meekly forth,
And with her virgin stars walked in the heavens,—
Walked nightly there, conversing as she walked,
Of purity, and holiness, and God." Pollok.

First ☽, 21st d. 3h 15m morn | Full ☾, 27th 10h 20m eve

HW | Holidays, Weather, &c | FARMER'S CALENDAR.

1	Circumcision. ☽ ☽ ☽	The revolving seasons have
B 2d	Sun af. Christmas. snow	once more brought the "Farmer's
3	Com. C. at Halifax. ☽ sets 0h 36	Almanack" before the public,
4	Inf. C. & Sess Peace at Amherst	which contains this year, in ad-
5	Very low tides [and at Windsor	dition to the matter usually given,
6	Epiphany. pleasant for the	a number of valuable and inter-
7	☽ apogee. Appearance	esting Tables, relating to our pro-
B 8th	Sun. af. Epiph. of a	vincial affairs, which we trust will
10	Not very high tides. storm.	not prove wholly unacceptable,
11	Sup. C. sits at Halifax ☽ gr elm	particularly to our friends in the
12	Fine again	country. Pages 2, 3 & 4, con-
13	♀ ♃	tain a table of Latitudes and Lon-
14	☐ ☉ ☽ few days.	gitudes of different parts of the pro-
15	snow may be expected	vince, made by direction of our
B 17th	2d Sun af Epiph. soon.	late worthy Admiral, Sir Charles
18	Inf. C. & Sess Peace held at	Ogle. p. 9. Imports and Exports
19	cold and [Truro	for the years 1827, 28 & 29 ;
20	☽ ☉ ♃ enters blustering	p 10, 12, 13, Population, Reli-
21	a storm of rain	gious Denominations and Agri-
22	♀ ♀ or snow	culture, in 1827; the table on
B 23d	Sun af Eph. about	p. 11, shows the quantity of flour,
24	☽ per. High tides. this time.	brandy and gin imported in one
25	Inf. C. & Sess Peace held at	year, and the amt. of duty paid
26	☽ ♀ ☉ beautiful [Pictou	thereon; p 14, abstract of dutiable
27	D. of Sussex b. 1773.	goods imported in one year and
28	evenings.	the amt. of duty paid or secured
29	more snow and very cold	under the provincial acts; p 15, 16,
B 30th	Septua. Sun. K. Chas. I. Martyr	17, 18 & 19 give a Dr. and Cr.
31	☽ ☉ ♀ weather	statement of the provincial funds,
		and a general account of pay-
		ments for 1829 ; p 20, table of
		all duties collected in the pro-
		vince in 1829, (the column of
		"General Duties," should have been under the head of "Collected
		at Custom House," instead of "payments under provincial acts.")
		with the salaries allowed for collection ; p 21 contains a copy of the
		Treasurer's Account, by which it appears that £38,015 19 2 were
		paid in by the Collectors of Customs; £1982 15 3 from Collectors of
		Light Duty; and £22,034 14 8 nett revenue received from the Offi-
		cers of Customs, after deducting their salaries (£8,535 11 6.) The
		payments out amount to £77,455 13 11, as particularized in p. 16,
		17, 18 and 19 leaving a balance in the Treasury of £12,543 8 7.



Last ☾, 4th d. 4h 0m eve | New ☉, 12th d 0h 45m eve

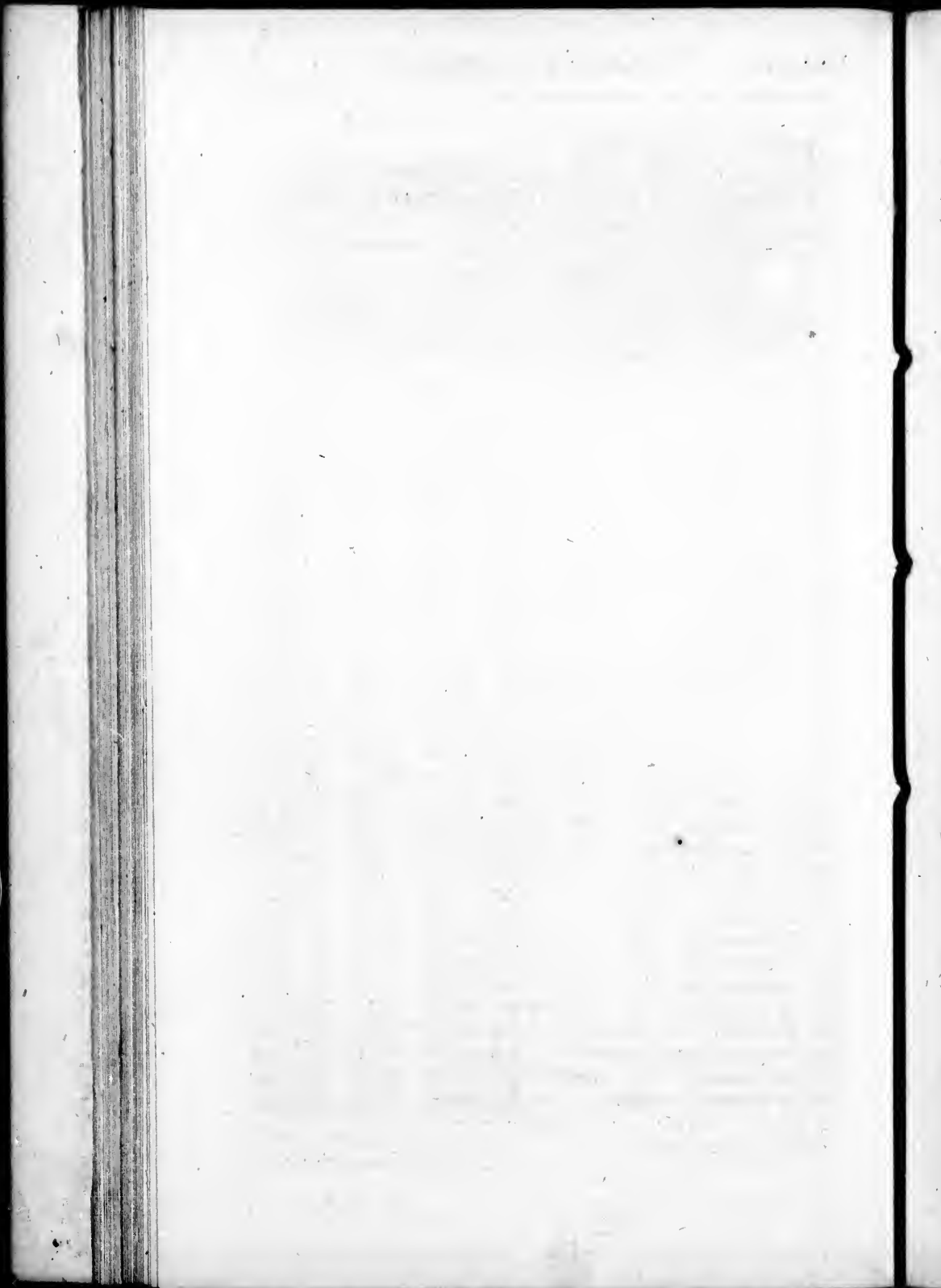
D	D	☺	☺	Days'	Sun's	☾ R.	☾	☾'s	High
M	W	rises	sets	len'th	dec.S	& S.	south.	place.	Water
1	Tu	7 9 4	51	9 42	17 13	9 58	3 19	reins	10 49
2	W	7 8 4	52	9 44	16 56	10 57	4 4	reins	11 19
3	Th	7 7 4	53	9 46	16 38	11 54	4 46	reins	11 59
4	Fr	7 5 4	54	9 50	16 21	morn 5	29	secrets	morn
5	Sa	7 4 4	55	9 52	16 30	51 6	14	secrets	1 24
6	B	7 3 4	56	9 54	15 44	1 49	7 0	thighs	2 10
7	M	7 2 4	57	9 56	15 26	2 44	7 46	thighs	2 56
8	Tu	7 1 4	59	9 58	15 7	3 36	8 34	thiggs	3 44
9	W	6 59 5	1	10 2	14 48	4 28	9 24	knees	4 34
10	Th	6 58 5	2	10 4	14 29	5 16	10 15	knees	5 25
11	Fr	6 56 5	4	10 8	14 9	5 58	11 6	legs	6 16
12	Sa	6 55 5	5	10 10	13 49	sets	11 58	legs	7 8
13	B	6 53 5	7	10 14	13 29	6 31	eve 50	feet	8 0
14	M	6 52 5	8	10 16	13 9	7 39	1 41	feet	8 51
15	Tu	6 51 5	9	10 18	12 49	8 48	2 32	head	9 42
16	W	6 49 5	11	10 21	12 28	9 58	3 24	head	10 34
17	Th	6 48 5	12	10 24	12 7	11 8	4 17	neck	11 26
18	Fr	6 47 5	13	10 26	11 46	morn 5	10	neck	eve 20
19	Sa	6 45 5	15	10 30	11 25	0 18	6 4	neck	1 14
20	B	6 44 5	16	10 32	11 4	1 25	7 1	arms	2 10
21	M	6 42 5	18	10 36	10 42	2 30	7 59	arms	3 6
22	Tu	6 41 5	19	10 38	10 20	3 28	8 56	breast	4 3
23	W	6 39 5	21	10 42	9 59	4 21	9 52	breast	4 53
24	Th	6 38 5	22	10 44	9 37	5 10	10 44	heart	5 43
25	Fr	6 36 5	24	10 48	9 14	5 50	11 36	heart	6 33
26	Sa	6 34 5	26	10 52	8 52	rises	morn	belly	7 23
27	B	6 33 5	27	10 54	8 30	6 46	0 25	belly	8 8
28	M	6 31 5	29	10 58	8 7	7 44	1 11	reins	8 48

II Month.



Oh 45m eve

C's place.	High Water
reins	10 49
reins	11 19
reins	11 59
secrets	morn
secrets	1 24
chighs	2 10
chighs	2 56
chiggs	3 44
knees	4 34
knees	5 25
legs	6 16
legs	7 8
feet	8 0
feet	8 51
head	9 42
head	10 34
neck	11 26
neck	eve 20
neck	1 14
arms	2 10
arms	3 6
breast	4 3
breast	4 53
heart	5 43
heart	6 38
belly	7 23
belly	8 8
reins	8 48

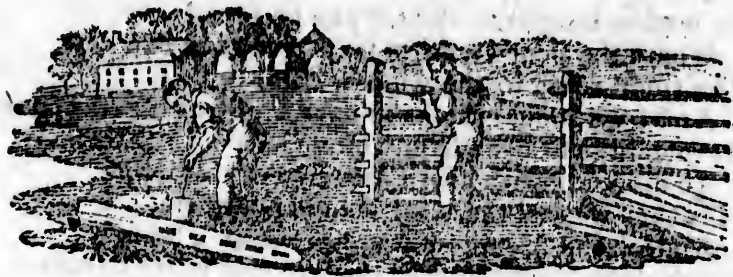


The wind howls loud, the snow is on the ground,
 The icy river has forgot to flow;
 On leafless boughs no shelter can be found
 Where the poor starving feathered race can go.
 The timid robin to the window flies,
 And begs some crumbs to save him from death's door.
 As round the fire the happy circle hies
 To dissipate with mirth drear winter's gloom.
 'Tis then we feel the blest delights of home,
 And for the friendless wanderer shed a tear,
 Who's doom'd unsheltered through this world to roam,
 Devoid of even hope his days to cheer.

Tyrrell

First D, 19th d. 10h 44m morn. | Full O, 26th d. 6h 37m eve

DM	Holidays, Weather, &c.	FARMER'S CALENDAR.
1		<i>More snow.</i> This is a cold and cheerless
2	Purif. of B V Mary	month, and those who have but
3		little wood and little food and
4	Low tides	little ambition to bestir them-
5	☾ apogee	selves, save now and then to
B.	Sexagesima Sun	make a visit to the Tavern,
7	Com. C. sits at Halifax	must be in a sorry predicament
8	☿ Start	— See that red-nosed, blotchy-
9		fac'd man. He takes little or
10	☾ ☿	no concern for friends or fami-
11		ly; he has a mortgaged farm;
12	High tides	three shrivell'd cows; an old
B.	Quinq Sun. ☾ ☿	mare; some meadow hay; an
14	Valentine	open ragged barn; a shabby
15	Shrove Tuesday	windowless house, where
16	Ash Wednesday	dwells a comfortless wife and
17	☿ ☽ h. ☾ in per.	six complaining little ones,
18	Greatest elong. of ☿	that would excite a tear of sym-
19	☽ enters ☿	pathy from any, but the dissi-
B.	1st Snn. in Lent.	pated and thoughtless: the fa-
21	Middling tides.	ther of this mournful group,
22	☽ runs high.	you will find at the tavern, the
23	☽ ☿ ♃	accursed resort of hard hearted
24	Duke of Camb b1774	tiplers, cheating jockies, and
25	High tides	lazy loungers! See the cup of
26	☽ eclipsed. invisible.	poison raised high and only ta-
B.	2d Sun. in Lent	ken from his lips to give free
28	Very high tides	utterance to impious blasphem-
		ies! Alas, how changed!



Last ☾, 6th d. 0h 57m eve. | New ☉, 14th d. 1h 36m morn

D	D	☉	☉	Days'	Sun's	☾ R.	☾	☾'s	High
M	W	rises	sets	len th	dec. S	& S.	south.	place.	water
1	Tu	6 29	5 31	11 27	44 8	45 1	56	reins	9 34
2	W	6 28	5 32	11 47	22 9	44 2	42	reins	10 20
3	Th	6 27	5 33	11 66	59 10	43 3	26	secrets	11 6
4	Fr	6 25	5 35	11 106	36 11	41 4	10	secrets	11 56
5	Sa	6 24	5 36	11 126	13	morn. 4	54	thighs	morn.
6	B	6 23	5 37	11 145	49 0	35 5	40	thighs	0 51
7	M	6 21	5 39	11 185	26 1	29 6	28	thighs	1 38
8	Tu	6 19	5 41	11 225	3 2	19 7	17	knees	2 27
9	W	6 18	5 42	11 244	40 3	9 8	8	knees	3 17
10	Th	6 16	5 44	11 284	16 3	54 8	58	legs	4 8
11	Fr	6 15	5 46	11 303	53 4	35 9	50	legs	5 0
12	Sa	6 13	5 47	11 343	29 5	15 10	42	legs	5 52
13	B	6 12	5 48	11 363	5 5	50 11	35	feet	6 44
14	M	6 10	5 50	11 402	42	sets eve	27	feet	7 37
15	Tu	6 9	5 51	11 422	18 7	48 1	20	head	8 30
16	W	6 7	5 53	11 461	54 9	0 2	15	head	9 24
17	Th	6 5	5 55	11 501	31 10	15 3	10	neck	10 19
18	Fr	6 4	5 56	11 521	7 11	23 4	5	neck	9 15
19	Sa	6 2	5 58	11 560	43	morn. 5	3	arms	eve 12
20	B	6 1	5 59	11 580	20 0	28 6	0	arms	1 10
21	M	5 59	6 1	12 2	3 1	30 6	57	breast	2 7
22	Tu	5 58	6 2	12 40	27 2	25 7	34	breast	3 3
23	W	5 56	6 4	12 80	50 3	14 8	47	heart	3 56
24	Th	5 54	6 6	12 121	14 4	0 9	38	heart	4 48
25	Fr	5 53	6 7	12 141	38 4	37 10	26	belly	5 37
26	Sa	5 51	6 8	12 182	1 5	7 11	14	belly	6 24
27	B	5 50	6 10	12 202	25 5	42	morn.	belly	7 20
28	M	5 48	6 12	12 242	48	rises 0	0	reins	7 54
29	Tu	5 46	6 14	12 283	12 7	44 0	44	reins	8 0
30	W	5 45	6 16	12 303	35 8	41 1	27	secrets	8 37
31	Th	5 43	6 17	12 343	58 9	38 2	12	secrets	9 23

Spring. MARCH begins on Tuesday.

Oh ! come sweet spring, and fill the world.

Again with all thy lovely bloom ;
Let wild-wing'd tempests far be hurl'd

To winter's deep and dreary tomb.

Give to the brook its lucid charms ;

Give to the grove its warbling throng ;

Give to the flowers their spicy balms :

And waken nature's general song ;

And give to man what oft he wants

A heart of gratitude and love,

For all the God of nature grants ;

His merits, oh ! how far above !

First ☽, 20th d 6h 4m eve | Full ☉, 28th d 4h 7m morn

☾ | Holidays, Weather, &c | FARMER'S CALENDAR

h 36m morn

☾'s lōce.	High water
ins	9 34
ins	10 20
erets	11 6
erets	11 56
morn.	
ighs	0 51
ighs	1 38
ees	2 27
ees	3 17
gs	4 8
gs	5 0
ys	5 52
et	6 44
et	7 37
ad	8 30
ad	9 24
ck	10 19
ck	9 15
ns	eve 12
ns	1 10
east	2 7
east	3 3
art	3 56
art	4 48
ly	5 37
ly	6 24
ly	7 20
ns	7 54
ns	8 0
rets	8 37
rets	9 23

1	St David. Sess Peace at Halifax	
2	Middling tides.	A He who means to be a good
3	<i>cold and driving</i>	farmer, must endeavour to be
4	☾ apogee <i>storm.</i>	also a good neighbour. He
5	<i>Dull weather</i>	had better not depend on bor-
B	3d. Sun. in Lent <i>with</i>	rowing. but should be at
7	Com. C. sits at Halifax.	any time necessitated to bor-
8	Inf. C. at Halifax. Inf. C. & Sess	row, let him be particular a-
9	☾ r. low. [Peace at Sydney, CB]	bout returning. There should
10	Low tides. ☽ sets 7.20.	be a place to deposit all tools.
11	<i>hail, rain, snow</i>	This is of great importance, sa-
12	<i>or sleet.</i>	ving the trouble, time and
B	4th Sun in Lent. Mid L. Sun	vexation of searching, scold-
14	<i>Pleasant again.</i>	ing and fretting about lost
15	Tides very high	hoes, shovels, rakes, spades,
16	☽ perigee <i>We may</i>	axes, chains, crowbars &c.
17	St Patrick <i>now look</i>	Let your tools be kept in per-
18	<i>out for fine</i>	fect order, but this cannot be
19	Middling tides <i>weather.</i>	done if your negligent neigh-
B	5th Sun in Lent. Duchess of	bour keeps them continually in
21	☽ enters ♀ [Camb. b. 1778]	possession. It is too provo-
22	☽ runs high <i>more snow.</i>	king to have a valuable axe
23	<i>cold and windy</i>	sent home all battered like a
24	<i>about</i>	broomstick ; a hoe or spade
25	Ann. B. V. Mary. Lady Day	returned with each corner
26	<i>this time.</i>	knocked off ; a chain broken,
B	6th Sun in Lent. Palm Sun.	with links lost,--this kind of
28	<i>looks much</i>	work will never do, altho' you
29	High tides <i>like</i>	must love your neighbours as
30	<i>snow perhaps if</i>	yourselves.
31	<i>will turn to rain.</i>	



Last ☾, 5th d. 7h. 50m morn | New ☉ 12th d. 11h. 46m morn.

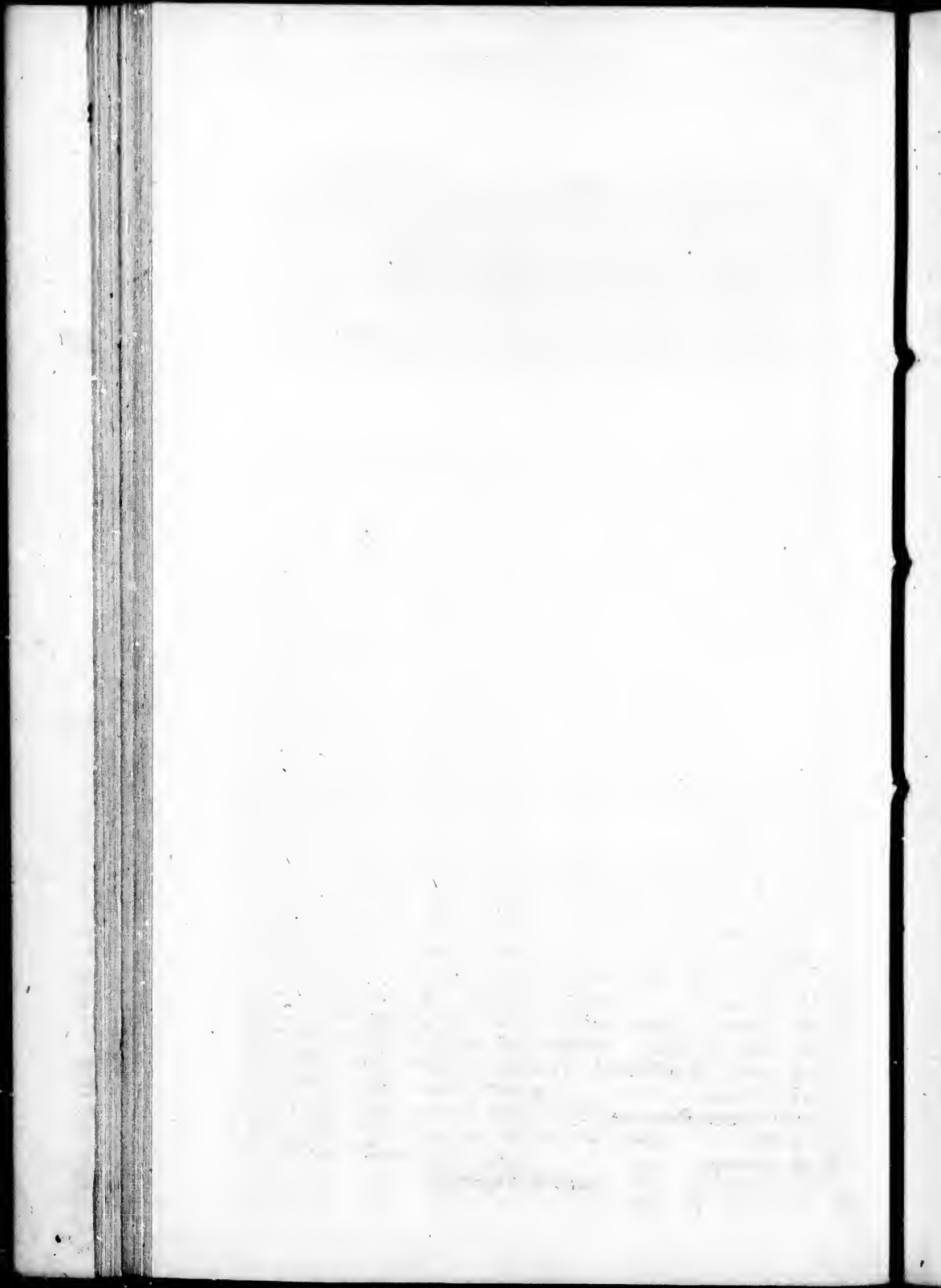
D	D	☉	☉	days	☉	☾ R.	☾	☾'s	High
M	W	rises	sets	len'th	dec.N	& S.	south	place'	water
1	Th	5 42 6	18 12 36	4 20 10 34 2 58	secrets	10	7		
2	Fr	5 40 6	20 12 40	4 44 11 28 3 42	thighs	10	52		
3	Sa	5 39 6	21 12 42	5 8 morn. 4 28	thighs	11	39		
4	C	5 37 6	23 12 46	5 30 0 21 5 17	knees.	morn.			
5	M	5 36 6	24 12 48	5 52 1 17 6 6	knees	1	16		
6	Tu	5 35 6	25 12 50	6 16 1 54 6 58	knees	2	6		
7	W	5 34 6	26 12 52	6 39 2 38 7 48	legs	2	56		
8	Th	5 32 6	28 12 56	7 13 17 8 37	legs	3	47		
9	Fr	5 31 6	29 12 58	7 24 3 54 9 28	feet	4	38		
10	Sa	5 29 6	31 13 2	7 46 4 30 10 20	feet	5	30		
11	B	5 27 6	33 13 6	8 8 5 2 11 13	head	6	23		
12	M	5 26 6	34 13 8	8 30 sets. evc. 8	head	7	17		
13	Tu	5 24 6	36 13 12	8 52 8 0 1 4	neck	8	13		
14	W	5 22 6	38 13 16	9 14 9 12 2 0	neck	9	10		
15	Th	5 21 6	39 13 18	9 35 10 26 3 0	arms	10	10		
16	Fr	5 20 6	40 13 20	9 57 11 31 4 0	arms	11	10		
17	Sa	5 13 6	42 13 21	10 18 morn. 5 0	breast	ev. 10			
18	B	5 17 6	42 13 26	10 39 0 31 5 57	breast	1	7		
19	M	5 15 6	45 13 30	11 0 1 23 6 52	heart	2	2		
20	Tu	5 14 6	46 13 32	11 21 2 7 7 43	heart	2	53		
21	W	5 18 6	47 13 34	11 41 2 45 8 32	heart	3	42		
22	Th	5 11 6	49 13 38	12 23 19 9 18	belly	4	39		
23	Fr	5 10 6	50 13 40	12 22 3 50 10 5	belly	5	15		
24	Sa	5 9 6	51 13 42	12 42 4 19 10 56	reins	6	0		
25	B	5 7 6	52 13 46	13 24 50 11 32	reins	6	42		
26	M	5 6 6	54 13 48	13 21 rise. morn. 15	reins	7	23		
27	Tu	5 5 6	55 13 50	13 40 7 36 0 15	secrets	8	0		
28	W	5 3 6	57 13 54	14 0 8 32 0 59	secrets	8	39		
29	Th	5 2 6	58 13 56	14 18 9 28 1 44	thighs	9	9		
30	Ff	5 0 7	0 14 0 14	37 10 22 2 31	thighs	9	42		

IV Month.



1h. 46m morn.

C's	High
place	water
secrets	10 7
thighs	10 53
thighs	11 39
knees	morn.
knees	1 16
knees	2 6
legs	2 56
legs	3 47
feet	4 38
feet	5 30
head	6 23
head	7 17
neck	8 13
neck	9 10
arms	10 10
arms	11 10
breast	ev. 10
breast	1 7
heart	2 2
heart	2 53
heart	3 42
belly	4 39
belly	5 15
reins	6 0
reins	6 42
reins	7 23
secrets	8 0
secrets	8 39
thighs	9 9
thighs	9 42



By nature charmed, I softly touch the string—
 Of April, and of April's queen, I sing;
 Oh! who would not on nature's beauties dwell?
 And seek her in her most sequestered cell?
 The clouds dispersing now, the sky serene,
 And Spring resumes her robe of purest green;
 Now Flora's train they timidly peep forth,
 The zephyr soft succeeds the sterner north,
 The earth confesses nature's bounteous powers—
 She sheds that bounty in refreshing showers;
 The feathered choristers of every grove
 Attune their notes to melody and love.

First ☽, 19th 2h 14m morn

Full ☉, 26th d 8h 5m eve

DM | Holidays, Weather, &c

FARMER'S CALENDAR.

1	Good Friday. ☽ apoge.	
2	Rather low tides	<i>Not</i>
B	Easter Day.	<i>unpleasant</i>
4	Easter Monday. Com. C at Ha-	lifax.
5	Easter Tuesday	[lifax.
6	Very low tides <i>for the season</i>	
7	Sup. ☽ ☺ ☽	
8		<i>fickle and unsteady</i>
9		<i>the mildness</i>
B	1st Sun. aft East. Low Sun	
11		<i>of the season</i>
12	Inf. C. & Sess Peace at Lunen-	
13	☽ per. [burg & Arichat, c. B.	
14	Very high tides.	
15		<i>increases.</i>
16	Tides decreasing	<i>frequent</i>
B	2d Sun. aft. East.	<i>showers.</i>
18	☽ runs hig'a	<i>grows warmer</i>
19	Low tides	
20	Sup. C at Halifax. Inf. C. & Ses	
21	[Peace at Annapolis & Port	
22	☉ enters ☽.	[Hood, c. B.
23	St George. Tides quite low.	
B	3d Sun. aft East.	<i>pleasant</i>
25	St Mark. Ds of Glou. b 1776.	
26	High tides	<i>and</i>
27	Inf. C. & Sess Peace at L'pool.	
28	h Stat.	<i>warm weather</i>
29	C apogee	
30		<i>quite fine</i>

"Tell me if you please,"
 said my neighbour," your
 opinion relative to the proper
 size of a farm In answer I
 would say that opinions differ.
 Many things there are for
 consideration. A man of little
 skill and little capital and little
 inclination to make improve-
 ments will need but a little
 spot of land, and no matter if
 this be all gravel or sand. Ma-
 ny of our farmer's are more
 anxious to possess land than
 to cultivate it. They have a cu-
 ble the quantity they need for
 profit and management. How
 productive is a small garden
 well managed! This shows the
 importance of laying out la-
 bour on such lands as are near-
 est our dwelling, that we need
 but little travel to get to them;
 that we have but a short dis-
 tance to transport our manure;
 that we can be frequent and
 often upon them, and have
 them continually under our
 inspection.



Last ☾ 4th d. 11h 21m eve | New ☀ 11th d. 7h 48m eve

D	D	☺	☺	Days'	Sun's	☾ R.	☾	☾'s	High							
M	W	rises	sets	len'th	decN	& S.	south.	place.	water							
1	B	4	59	7	1	14	2	14	55	11	12	3	19	thighs	10	32
2	M	4	58	7	2	14	4	15	14	morn.	4	7	7	knees	11	20
3	Tu	4	56	7	4	14	8	15	31	0	14	56	56	knees	morn.	
4	W	4	55	7	5	14	10	15	49	0	42	5	45	iegs	0	55
5	Th	4	54	7	6	14	12	16	6	1	21	6	34	legs	1	44
6	Fr	4	53	7	7	14	14	16	24	1	57	7	23	feet	2	33
7	Sa	4	52	7	8	14	16	16	40	2	31	8	13	feet	3	23
8	B	4	51	7	9	14	18	16	57	3	6	9	4	feet	4	14
9	M	4	49	7	11	14	22	17	13	3	40	9	57	head	5	6
10	Tu	4	48	7	12	14	24	17	29	4	13	10	50	head	6	0
11	W	4	47	7	13	14	26	17	45	sets	11	46	46	neck	6	56
12	Th	4	45	7	15	14	30	18	0	8	5	eve	45	neck	7	55
13	Fr	4	44	7	16	14	32	18	15	9	16	1	46	arms	8	56
14	Sa	4	43	7	17	14	34	18	30	10	21	2	48	arms	9	58
15	B	4	43	7	17	14	34	18	45	11	18	3	48	breast	10	58
16	M	4	42	7	18	14	36	18	59	morn.	4	46	46	breast	11	56
17	Tu	4	40	7	20	14	40	19	13	0	7	5	41	heart	eve	51
18	W	4	39	7	21	14	42	19	26	0	49	6	32	heart	1	42
19	Th	4	38	7	22	14	44	19	40	1	24	7	19	belly	2	30
20	Fr	4	37	7	23	14	46	19	52	1	56	8	6	belly	3	16
21	Sa	4	36	7	24	14	48	20	5	2	26	8	49	reins	4	0
22	B	4	35	7	25	14	50	20	17	2	55	9	33	reins	4	43
23	M	4	34	7	26	14	52	20	29	3	22	10	15	reins	5	26
24	Tu	4	33	7	27	14	54	20	40	3	51	11	0	secrets	6	10
25	W	4	32	7	28	14	56	20	52	4	22	11	44	secrets	6	54
26	Th	4	31	7	29	14	58	21	2	rises	morn			thighs	7	39
27	Fr	4	31	7	29	14	58	21	13	8	19	0	29	thighs	8	0
28	Sa	4	30	7	30	15	0	21	23	9	8	1	16	thighs	8	36
29	B	4	29	7	31	15	2	21	32	9	56	2	4	knees	9	16
30	M	4	28	7	32	15	4	21	42	10	42	2	52	kneea	10	2
31	Tu	4	27	7	33	15	6	21	51	11	21	3	41	leg	10	51

0000000000



d. 7h 48m eve

C's place.	High water
thighs	10 32
knees	11 20
knees	morn.
iegs	0 55
legs	1 44
feet	2 33
feet	3 23
feet	4 14
head	5 6
head	6 0
neck	6 56
neck	7 55
arms	8 56
arms	9 58
breast	10 58
breast	11 56
heart	eve 51
heart	1 42
belly	2 30
belly	3 16
reins	4 0
reins	4 43
reins	5 26
secrets	6 10
secrets	6 54
thighs	7 39
thighs	8 0
thighs	8 36
knees	9 16
knees	10 2
leg	10 51

0000000000

S
F
W
W
W
E
W
W
A
H
C
W
F
B
B
2
3
4
5
6
7
B
9
10
11
12
13
14
B
16
17
18
19
20
21
B
23
24
25
26
27
28
B
30
31

Farewell April, and thy showers;
 Welcome May, and all thy flowers;
 With lightsome heart and garlands gay,
 We haste to meet thee rosy May.

Ere Aurora opes the morning,
 While the dew, thee buds adorning,
 We rise to meet thee with the day,
 And greet thy coming welcome May.

Hark! the merry groups are singing;
 "Flowers beneath her feet are springing:"
 Cast vain tears and grief away,
 Welcome! welcome! sprightly May.

First ☽, 18th d. 11h 58m morn | Full ☉, 26th d 11h 46m morn

DM	Holidays, Weather, &c	FARMER'S CALENDAR.
B	4th Sun. aft Easter	The intelligent husbandman
2	Com. C. at Halifax	no longer considers himself as
3	Inf. C. & Sess Peace at Tusket	plodding in an humble sphere;
4	Very low tides. [Village	as devoted to an occupation,
5	☾ ☽. <i>serene and</i>	useful indeed as supplying the
6	St John Ev. ☐ ☉ ☿	physical wants of man, but
7	<i>pleasant weather.</i>	disconnected with the exercise
B	5th Sun. aft. East. Rog. Sun.	of his intellectual powers. His
9	Middling tides <i>storm.</i>	false shame and indifference
10	Inf. C. & Sess Peace at Guysboro'	to labour, fly before the con-
11	☐ ☉ ☽ [& at Shelburne.	viction that he ranks in soci-
12	Ascen. D. Holy Thurs. ☾ Per	ety with all that is useful and
13	Extreme high tides. ☐ ☉ ☽	dignified. He has the proud
14	☿ Stat. <i>rather cold</i>	consciousness of being enga-
B	Sun. aft. Asens. Day.	ged in an honourable calling;
16	☐ ☉ ☿ <i>fruitful</i>	a calling vitally important to
17	Inf. C. & Sess Peace at Kentville	social life; the basis which
18	Rather low tides. ☿ Stat.	supports "The Corinthian
19	<i>showers</i>	column of polished society."
20	<i>accompanied by</i>	He occupies a field affording
21	Low tides ☉ enters ☐ <i>thunder</i>	ample scope and constant oc-
B	Whit Sun. P's Homburg b 1770	casion for intellectual exer-
23	Whit Monday. <i>and lightning</i>	cise. He has the consolation
24	Whit Tuesday. Prs Alexandri-	of feeling, that cheerfulness
25	[na Victoria b. 1819	and health, respectability and
26	Dapogee. Inf. ☌ ☉ ☿ <i>more</i>	success, are the attendants of
27	<i>rain followed by</i>	his labours. He exults in re-
28	<i>very warm</i>	counting the worthies of all
B	Trinity Sun. K Chas II restored	ages, who, superior to vulgar
30	Low tides <i>weather.</i>	prejudice, have accounted in
31	Sup C at Pictou and Windsor.	their honour, and their happi-
	[Inf C & Sess. Peace at	
	[Dorchester.	



Last ☾, 3d d. 11h. 6m. morn | New ☉, 10th d. 2h. 37m morn

D	D	☺	☺	Days'	Sun's	☾ R.	☾	☾'s	High
M	W	rises	sets	len'th	dec. N	& S.	south.	place	Water.
1	W	4 27 7	33 15 6	21 59	11 58	4 29	legs	11 39	
2	Th	4 26 7	34 15 8	22 7	morn. 5	17	legs	morn.	
3	Fr	4 25 7	35 15 10	22 15	0 34	6 6	feet	1 16	
4	Sa	4 25 7	35 15 10	22 23	1 46	54	feet	2 4	
5	B	4 24 7	36 15 12	22 30	1 35	7 43	head	2 53	
6	M	4 24 7	36 15 12	22 36	2 9	34	head	3 44	
7	Tu	4 23 7	37 15 14	22 42	2 43	9 29	neck	4 38	
8	W	4 23 7	37 15 14	22 48	3 20	10 24	neck	5 34	
9	Th	4 22 7	38 15 16	22 54	4 4	11 23	arms	6 33	
10	Fr	4 22 7	38 15 16	22 59	sets ev.	25	arms	7 35	
11	Sa	4 22 7	38 15 16	23 3	9 0	1 29	breast	8 37	
12	B	4 21 7	39 15 18	23 8	9 55	2 28	breast	9 37	
13	M	4 21 7	39 15 18	23 11	10 43	3 26	heart	10 36	
14	Tu	4 21 7	39 15 18	23 15	11 20	4 21	heart	11 31	
15	W	4 20 7	40 15 20	23 18	11 55	5 11	belly	ev. 21	
16	Th	4 20 7	40 15 20	23 20	morn. 6	0	belly	1 10	
17	Fr	4 20 7	40 15 20	23 22	0 28	6 44	belly	1 54	
18	Sa	4 20 7	40 15 20	23 24	0 54	7 27	reins	2 37	
19	B	4 20 7	40 15 20	23 26	1 21	8 9	reins	3 20	
20	M	4 20 7	40 15 20	23 26	1 49	8 53	secrets	4 3	
21	Tu	4 20 7	40 15 20	23 27	2 19	9 36	secrets	4 47	
22	W	4 20 7	40 15 20	23 27	2 51	10 22	secrets	5 32	
23	Th	4 20 7	40 15 20	23 27	3 26	11 8	thighs	6 18	
24	Fr	4 20 7	40 15 20	23 26	4 3	11 56	thighs	6 58	
25	Sa	4 20 7	40 15 20	23 25	rises. morn.	knees	7 41		
26	B	4 20 7	40 15 20	23 23	8 35	0 44	knees	8 25	
27	M	4 20 7	40 15 20	23 21	9 18	1 33	kness	8 55	
28	Tu	4 20 7	40 15 20	23 19	9 55	2 22	legs	9 34	
29	W	4 21 7	39 15 18	23 16	10 36	3 10	legs	10 20	
30	Th	4 21 7	39 15 18	23 13	11 2	3 58	feet	11 10	

Faint, illegible text at the bottom of the page, possibly bleed-through from the reverse side or a secondary table.

VI Month



2h. 37m morn

C's place	High Water.
legs	11 39
legs	morn.
feet	1 16
feet	2 4
head	2 53
head	3 44
neck	4 38
neck	5 34
arms	6 33
arms	7 35
breast	8 37
breast	9 37
heart	10 36
heart	11 31
belly	ev. 21
belly	1 10
belly	1 54
reins	2 37
reins	3 20
secrets	4 3
secrets	4 47
secrets	5 32
thighs	6 18
thighs	6 58
knees	7 41
knees	8 25
kness	8 55
legs	9 34
legs	10 20
feet	11 10



[The main body of the page contains extremely faint and illegible text, appearing as a light gray cloud against the white background.]

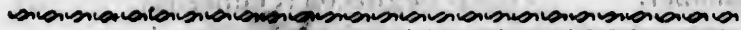
[A vertical column of text is visible on the far right edge of the page, partially cut off. The characters are difficult to discern but appear to be a sequence of numbers and letters.]

The sweet lovely morning is clear and serene,
 The innocent lambs are at play;
 The birds in sweet notes, as I pass o'er the green
 Delightfully sing on each spray.
 The scenes that are round us profusely are deck'd,
 The fields in rich verdure appear,
 May Providence kind all his creatures protect,
 And send them a plentiful year.
 The oxen so lusty, those grain fields so green,
 Those sheep that o'erspread the wide plains,
 Proclaim the kind hand of a Being unseen,
 Who splendid in majesty reigns.

First ☽ 16th d. 11h. 45m. eve | Full ☉ 25th d. 2h. 46m. morn

PM | Holidays, Weather. &c | FARMER'S CALENDAR.

1	☾ ☿ ♃	vegetation	ness, to be enrolled among the
2		advances rapidly.	cultivators of the soil. By such
3	Low tides	chilly	he finds his art to have been
4		easterly winds	honoured from the dark times
B	1st Sun aft Trin. DCumb b1771		of fable and mythology, to the
6	Commrs C sits at Halifax.		present moment of meridian
7	Sess Peace at Halifax, S Court		light. <i>Seest thou a man dili-</i>
8	☿ Stat [at Triuro & Kentville		<i>gent in his business! He shall</i>
9	☽ perigee	may be	<i>stand before Kings! He sh ill</i>
10	Very high tides	expected	<i>not stand before mean MEN.</i>
11	St Barnabas ☿ stat.		Prov. XXH. 29.
B	2d Sun aft Trin.		
13		becomes quite	The potatoe is undoubtedly
14	Inf C at Halifax. Sup C at		the most profitable crop that
15	[Amherst and Annapolis		the N.S. farmer can raise and
16		warm and pleasant	may be planted any time after
17	Low tides	colder	frost is out of the ground, till
18		look out for	4th July. Break up all waste
B	3d Sun aft Trin.	frequent	or fallow ground you can
20	Great Elong of ☿	showers	spare, and plant it with pota-
21	☉ enters ♄	of rain	toes, with or without manure.
22	☽ apogee		One hoeing will generally be
23	Tides rather high	fine	sufficient—and the ground
24	Nat. of St John Baptist.		will be rather enriched than
25	☽ runs low	growing	impoverished, even tho' little
B	4th Sun aft Trin. K. William		or no manure be used, but a
27		season. [IV's access 1830	little of any kind of manure,
28	Inf C & Sess Peace at Amherst,		in the hill, will greatly im-
29	St Peter [Sup C at Liverpool		prove the crop
30	Tides quite low.	warm	



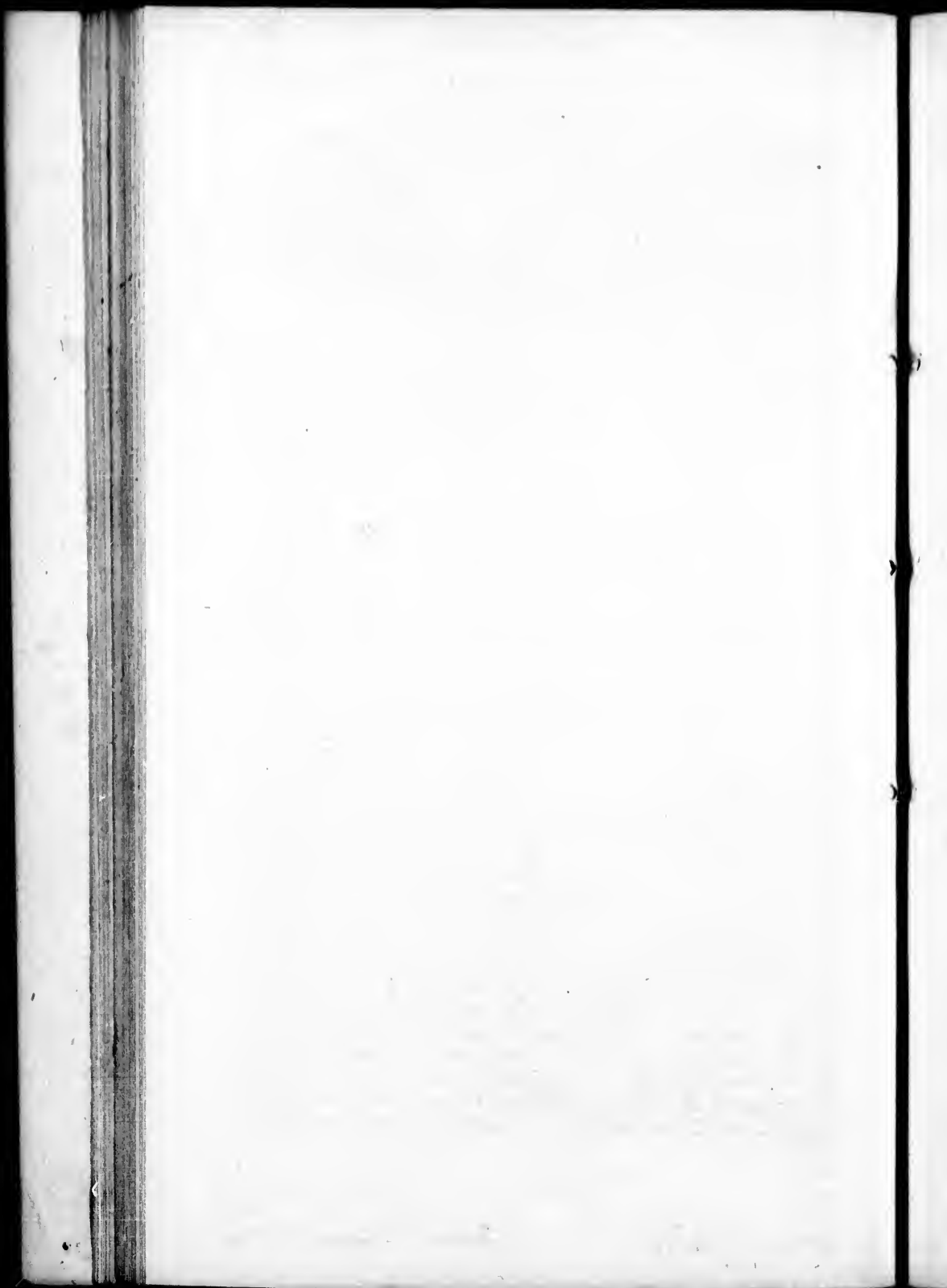
Last ☽, 2d d. 7h. 26m. eve				New ☉, 9th d. 9h. 34m. morn														
D	D	☺	☺	Days'	Sun's	☾ R.	☾	☾'s.	High									
M	W	rises	sets	len'th	dec. N	& S.	south.	place	water									
1	Fr	4	22	7	38	15	16	23	9	11	32	4	45	feet	11	55		
2	Sa	4	22	7	38	15	16	23	5	morn.	5	33	head	morn.				
3	B	4	22	7	38	15	16	23	1	0	5	6	22	head	1	32		
4	M	4	23	7	37	15	14	22	5	6	0	37	7	13	neck	2	23	
5	Tu	4	23	7	37	15	14	22	5	1	15	8	6	neck	3	16		
6	W	4	23	7	37	15	14	22	4	5	2	9	2	arms	4	12		
7	Th	4	24	7	36	15	12	22	3	2	3	10	1	arms	5	11		
8	Fr	4	24	7	36	15	12	22	3	3	3	11	2	breast	6	12		
9	Sa	4	25	7	35	15	10	22	2	6	sets.	eve	4	breast	7	14		
10	B	4	26	7	34	15	8	22	1	9	8	27	1	4	heart	8	14	
11	M	4	26	7	34	15	8	22	1	9	10	2	2	heart	9	12		
12	Tu	4	27	7	33	15	6	22	3	9	4	8	2	5	heart	10	5	
13	W	4	28	7	32	15	4	21	5	5	10	2	3	4	belly	10	56	
14	Th	4	29	7	32	15	4	21	4	6	10	5	4	3	belly	11	43	
15	Fr	4	29	7	31	15	2	21	3	7	11	19	5	18	reins	eve	28	
16	Sa	4	30	7	30	15	0	21	2	8	11	4	6	2	reins	1	12	
17	B	4	31	7	29	14	5	21	1	8	morn.	6	4	5	secrets	1	56	
18	M	4	32	7	28	14	5	21	8	0	1	8	7	2	secrets	2	39	
19	Tu	4	33	7	27	14	5	20	5	7	0	4	8	13	secrets	3	24	
20	W	4	33	7	27	14	5	20	4	7	1	2	9	0	thighs	4	10	
21	Th	4	34	7	26	14	5	20	3	5	2	0	9	4	thighs	4	57	
22	Fr	4	35	7	25	14	5	20	2	4	2	2	10	3	6	knees	5	46
23	Sa	4	36	7	24	14	4	20	1	2	3	3	11	2	5	knees	6	35
24	B	4	37	7	23	14	4	20	0	0	rises.	morn.			knees	7	24	
25	M	4	39	7	21	14	4	19	4	7	7	5	3	0	14	legs	8	0
26	Tu	4	40	7	20	14	4	19	3	4	8	2	8	1	4	legs	8	30
27	W	4	41	7	19	14	3	19	2	1	9	2	1	5	2	feet	9	2
28	Th	4	43	7	18	14	3	19	7	9	3	5	2	4	1	feet	9	51
29	Fr	4	43	7	17	14	3	18	5	8	10	5	3	2	9	head	10	39
30	Sa	4	44	7	16	14	3	18	3	9	10	3	4	1	7	head	11	27
31	B	4	45	7	15	14	3	18	2	5	11	1	5	7	head	morn.		

VII Month



1. 9h. 34m. morn

place	C's.	High water.
feet	11	55
head		morn.
head	1	32
neck	2	23
neck	3	16
arms	4	12
arms	5	11
breast	6	12
breast	7	14
heart	8	14
heart	9	12
heart	10	5
belly	10	56
belly	11	43
reins	eve	28
reins	1	12
secrets	1	56
secrets	2	39
secrets	3	24
thighs	4	10
thighs	4	57
knees	5	46
knees	6	35
knees	7	24
legs	8	0
legs	8	30
feet	9	2
feet	9	51
head	10	39
head	11	27
head		morn.



Heaven's sultry breath is heavy with perfume,
 And summer odours, summer hues obtain;
 The forest's stationary line of gloom,
 Dark and majestic, skirts the fulgent plain.
 And now is langour creeping stealthily,
 With unopposed, and irresistibile tread
 Over the frame,— The blue, religious sky,
 One stainless sapphire, arches over head
 With lore of love ineffable, outspread;
 Whilst health's full currents, equable and slow
 Making it adoration to respire,
 Thrill through the veins in warm perceptible flow,
 As if the founts of life were rising higher,
 Than man his Makers praise might hymn with seraph's
 fire.

First D, 10th d 1h 50m eve | Full O, 24th d 4h 50m eve
 DM | Holidays, Weather, &c. | FARMER'S CALENDAR.

1	<i>some appearance</i>	Mowing is laborious work per-
2	Visit of B. V. Mary. Low tides	formed in the hottest season
B 5th	Sun aft Trin <i>of rain</i>	of the year; and yet, strange
4	Com C at Halifax	enough, laborers seem to pre-
5	Inf C. & Sess Peace at Wind-	fer it to any other part of the
6	[sor & Digby. Sup C. at Li-	business of hay making. ma-
7	Dperigee. [verpool	ny value themselves on their
8	<i>fine weather for securing hay</i>	adroitness in mowing, they
9	<i>and grain</i>	have much bragging about it.
B 6th	Sun. aft Trin	but give me the man that talks
11	Very high tides	but little, cuts clean, carries
12	Sup C at Halifax & Shelburpe	a steady hand, and works with
13	[Inf. C. & Sess Peace at Tru-	prudence. I want none of your
14	<i>a storm is not</i> [ro	slashing and flouncing and
15	Swithin <i>very</i>	boasting and blustering and
16	<i>far distant</i>	halting every two rods to rest,
B 7th	Sun aft Trin <i>becomes</i>	under pretence of whetting
18	very low tides <i>cool</i>	the scythe. Awake all hands
19	Inf C & Sess Peace at Pictou	at peep of day! Tools all re-
20	Sup 6 ☺ ☽ ☽ apogee	dy and sharpened the night
21	<i>pleasant for</i>	before, spring to it in the cool
22	● runs low <i>some days</i>	of the sweet morning air, be-
23	☺ enters ♄	fore the sun chases the heavy
B 8th	Sun. aft Trin. <i>very</i>	dew away. One half the day's
25	St James. Duch Camb b 1797	work will be over before nine,
26	St Anne. Tides quite high.	and then rest awhile in the
27	6 ☽ ♃ <i>hot rain.</i>	heat and burning of the day.
28	<i>thunder and</i>	I am glad my boy to see you
29	<i>lightning</i>	have a stiff and firm snead your
30	Low tides. ♀ gr elong	scythe in good order and well
B 9th	Sun aft Trin.	fastened. This is of great im-



Fast D, 1st d, 1h, 27m. morn, | New ☉. 7th d, 5h, 50m eve,

D	D	☉	☉	Days	Sun's	☉ R	☉	☉'s	High							
M	W	rises	sets	len'th	dec. N	& S	south	place	water							
1	M	4	46	7	14	14	28	18	10	11	47	5	58	neck	1	8
2	Tu	4	47	7	13	14	26	17	55	morn	6	51	neck	2	1	
3	W	4	48	7	12	14	24	17	39	0	30	7	48	arms	2	53
4	Th	4	50	7	10	14	20	17	24	1	19	8	45	arms	3	56
5	Fr	4	51	7	9	14	18	17	8	2	15	9	46	breast	4	56
6	Sa	4	52	7	8	14	16	16	51	3	15	10	47	breast	5	57
7	B	4	53	7	7	14	14	16	35	sets	11	45	heart	6	55	
8	M	4	54	7	6	14	12	16	18	7	42	ev	41	heart	7	51
9	Tu	4	55	7	5	14	10	16	18	18	1	34	belly	8	44	
10	W	4	57	7	3	14	6	15	44	8	51	2	24	belly	9	31
11	Th	4	58	7	2	14	4	15	26	0	21	3	11	reins	10	21
12	Fr	4	59	7	1	14	2	15	8	9	50	3	56	reins	11	6
13	Sa	5	0	7	0	14	0	14	50	10	19	4	41	reins	11	51
14	B	5	2	6	53	13	56	14	32	10	49	5	25	secrets	eve	35
15	M	5	4	6	56	13	52	14	14	11	21	6	10	secrets	1	20
16	Tu	5	5	6	55	13	50	13	55	11	59	6	56	thighs	2	6
17	W	5	6	6	54	13	48	13	36	morn	7	43	thighs	2	53	
18	Th	5	7	6	53	13	46	13	17	0	39	8	31	thighs	3	41
19	Fr	5	9	6	51	13	42	12	57	1	26	9	20	knees	4	30
20	Sa	5	10	6	50	13	40	12	38	2	16	10	10	knees	5	20
21	B	5	11	6	49	13	38	12	18	3	14	11	0	legs	6	5
22	M	5	13	6	47	13	34	11	58	4	13	11	50	legs	6	50
23	Tu	5	14	6	46	13	32	11	38	rises	morn.	feet	7	35		
24	W	5	15	6	45	13	30	11	17	7	41	0	40	feet	8	6
25	Th	5	17	6	43	13	26	10	57	8	14	1	30	feet	8	47
26	Fr	5	18	6	42	13	24	10	36	8	45	2	18	head	9	28
27	Sa	5	20	6	40	13	20	10	15	9	19	3	10	head	10	20
28	B	5	21	6	39	13	18	9	54	9	56	4	0	neck	11	10
29	N	5	22	6	38	13	16	9	33	10	36	4	53	neck	morn.	
30	Tu	5	24	6	36	13	12	9	12	11	22	5	48	arms	0	58
31	W	5	26	6	34	13	8	8	50	morn	6	45	arms	1	55	

no no no



sh. 50m eve,

C's place	High water
beck	1 8
beck	2 1
rms	2 58
rms	3 53
roast	4 56
reast	5 57
wart	6 55
wart	7 51
belly	8 41
belly	9 31
bins	10 21
bins	11 6
bins	11 51
secrets	eve 35
secrets	1 20
ighs	2 6
ighs	2 53
ighs	3 41
ees	4 30
ees	5 20
gs	6 5
gs	6 50
et	7 35
et	8 6
t	8 47
ad	9 28
ad	10 20
Ek	11 10
ok	morn.
u	0 58
as	1 55

no no no

S
—
“
S
A
A
Q
A
T
T
“
A
T
—
F
—
D
—
1
2
3
4
5
6
B
8
9
10
11
12
13
B
13
10
17
18
19
20
B
22
22
22
22
22
B
22
3
3

“ ————— the reapers gaze
 Silent and trembling, on the frowning skies;
 A sudden flash the wonted signal gives,
 And loud, and long, the dreadful crush is heard;
 Quicker the lightnings glance—the increasing storm
 Approaches nearer:— mute the rustics stand.
 The master casts a pensive look around;
 Then upward turns his eyes;— a look that speaks,
 “Much corn is yet abroad; a few days more,
 And all had been secure: — but, gracious heaven!
 Thy will be done.”

First ☽, 15th d. 6h. 10m. morn. Full ☉, 23rd. d. 5h. 21m. morn.
 Last ☽ 30th d. 6h. 33m. morn.

DM | Holidays, Weather &c. | FARMER'S CALENDAR

1	Low tides	Rain.	portance; but there is Bill
2		Variable	Worry, he is so inattentive to
3		weather.	these particulars, and such
4	☽ perigee.	Becomes	a smasher, that he is ever in a
5	☽ ☺ ☿	more	foaming sweat.
6	Tides rise	settled	
B	10th Sun. aft. Trin		There is much said about <i>dom-</i>
8	Com. C. at H ₂		estic economy. Now my dear, A-
9		very warm	lice, we must go hand in hand in
10	St. Lawrence. ☽ ☺ ♃	for	this matter. You surely know
11		some days.	that, much, very depends on our
12		you	being united in the management of
13	Queen Adelaide, b. 1792.		our family affairs, in order to keep
B	11th Sun. aft. Trin.	may	our heads out of water, as we may
15	Low tides	now look	say. It is said that a woman can
16	☽ apogee	out for a	throw out at the window with a
17	Duchess Kent, b. 1786.	storm.	tea-spoon, more, than a man can
18	Very low tides		throw in at the door with a brood
19		becomes colder	shovel. It is your province, wife,
20	☽ runs low	and	to keep a good look out, and see
B	12th Sun. aft. Trin. K. Wm IV.		that Goody WASTE, that old, pes-
22		[born 1765.	tiferous hag, is no inmate of our
23	☽ enters ♀	more	family. Keep watch, otherwise
24	St. Bartholomew	pleasant	she may be dashing in pieces our
25	Tides rise		crockery; casting sweet whole-
26		damp and	some provisions into the hog pail;
27		disagreeable	breaking the window glass; burn-
B	13th Sun. aft. Trin. St. Augustine		ing the wood unnecessarily; fry-
29	St. John Bapt. beheaded about		ing nutsakes making sugar candy,
30	Sup. C. at Sydney C. B.		when you are away, and many
31	☽ gr. elong.	this time	other things too numerous to men-
			tion, as the shopkeepers say—
			These may be bought by some,



New ☉, 6th d. 4h 20m morn | First ♃, 14th d. 0h 28m morn

D	D	☉	☉	Days	Sun's	☾ R.	☾	☾'s	High	
M	W	rises	sets	len'th	dec.N	& S.	south.	place.	water	
1	Th	5 27	5 33	13 6	8 28	0 13	7 43	breast	2 52	
2	Fr	5 29	6 31	13 2	8 7	1 10	8 42	breast	3 52	
3	Sa	5 31	6 29	12 5	8 7	2 14	9 40	heart	4 50	
4	B	5 32	6 28	12 5	7 23	3 21	10 36	heart	5 46	
5	M	5 33	6 27	12 5	7 0	4 29	11 29	belly	6 39	
6	Tu	5 35	6 25	12 5	6 38	sets.	eve	20	belly	7 30
7	W	5 36	6 24	12 4	6 16	7 28	1 10	belly	8 20	
8	Th	5 37	6 23	12 4	5 53	7 55	1 55	reins	9 5	
9	Fr	5 39	6 21	12 4	5 31	8 24	2 41	reins	9 51	
10	Sa	5 40	6 20	12 4	5 8	8 54	3 26	secrets	10 36	
11	B	5 42	6 18	12 3	4 45	9 27	4 11	secrets	11 21	
12	M	5 43	6 17	12 3	4 22	10 31	5 57	thighs	eve 7	
13	Tu	5 45	6 15	12 3	3 59	10 40	5 44	thighs	0 54	
14	W	5 46	6 14	12 2	3 36	11 25	6 31	thighs	1 41	
15	Th	5 48	6 12	12 2	3 13	morn.	7 20	knees	2 30	
16	Fr	5 49	6 11	12 2	2 50	0 14	8 10	knees	3 20	
17	Sa	5 51	6 9	12 1	2 27	1 10	9 0	legs	4 10	
18	B	5 52	6 8	12 1	2 4	2 7	9 50	legs	5 0	
19	M	5 54	6 6	12 1	1 40	3 8	10 40	legs	5 50	
20	Tu	5 56	6 4	12 1	1 17	4 13	11 30	feet	6 35	
21	W	5 57	6 3	12 0	54	rises.	morn.	feet	7 20	
22	Th	5 59	6 1	12 0	30	6 53	0 20	head	8 0	
23	Fr	6 0	6 0	12 0	7 7	26	1 11	head	8 41	
24	Sa	6 2	5 58	11 5	8 15	8 1	2 3	neck	9 16	
25	B	6 3	5 57	11 5	8 30	8 41	2 56	neck	10 6	
26	M	6 5	5 55	11 5	9 2	9 27	3 52	arms	11 2	
27	Tu	6 6	5 54	11 4	9 26	10 17	4 50	arms	morn.	
28	W	6 8	5 52	11 4	9 49	11 15	5 47	breast	0 57	
29	Th	6 10	5 50	11 4	9 12	morn.	6 46	breast	1 56	
30	Fr	6 11	5 49	11 3	9 36	0 15	7 43	breast	2 53	



How splendid all the sky ! how still !
 How mild the dying gale !
 How soft the whispers of the rill,
 That wind along the vale !
 So tranquil Nature's works appear,
 It seems the Sabbath of the year:
 As if the summer's labour past, she chose
 This season's sober calm for blandishing repose.

0h 28m morn	
C's place.	High water
breast	2 52
breast	3 52
heart	4 50
heart	5 46
belly	6 39
belly	7 30
belly	8 20
reins	9 5
reins	9 51
secrets	10 36
secrets	11 21
thighs	eve 7
thighs	0 54
thighs	1 41
knees	2 30
knees	3 20
legs	4 10
legs	5 0
legs	5 50
feet	6 35
feet	7 20
head	8 0
head	8 41
neck	9 16
neck	10 6
arms	11 2
arms	morn.
breast	0 57
breast	1 56
breast	2 53

Full O, 21st d. 5h. 42h. eve	Last C, 29th d. 0h. 14m morn
DM Holidays, Weather, &c	FARMER'S CALENDAR.
1 ● runs high	Becomes unimportant matters, but, with us.
2 cooler, but	who have to work hard they are
3 very pleasant.	of very material consideration.—
B 14th Sun. aft Trin.	We must rise early & put in exer-
5 Com. C. at Halifax	cise our saving faculties; for
6 Sess. Peace at Halifax. Sup.	though we might amass even great
7 High tides [C. at Arichat. cb	treasures, without care & attention
8 Nativity of B. V. Mary rain	they would not make us rich or
9 and high winds.	happy.
10 fine again	Happiness seems to have fixed
B 15th Sun. aft. Trin.	her seat in rural scenes.
12 kinds of business	The spacious hall, the lighted
13 Inf. C. at Halifax & Shelburne	assembly, splendid equipages,
14 low tides [Sup. C. at Dorches-	and the pomp of courts, do
15 C runs low. [ster & Annapolis	not soothe and entertain the
16 Beautiful time for ripening	mind of man in any degree,
17 ♀ Stat. the fruits	like the verdant plain, the wa-
B 16th Sun aft. Trin	vy field, the artless stream, the
19 rain	enamelled mead, the fragrant
20 may be expected	grove, the melodious birds, the
21 Sup. C at Pictou & Kentville	sportive beasts, the azure sky,
22 St Matthew	and the starry heavens.
23 High tides	October.
24 ☺ enters ☾	The indolent farmer exhibits his
25 ♂ ☺ ♂	own disgrace to every passing
B 17th Sun. aft. Trin.	traveller, how often do we see a
26 Inf. ♂ ☺ ♂	farm susceptible of a high state of
27 Sup. C. at Truro. Inf. C. &	cultivation and which might with
28 [Sess. Peace at Yarmouth.	industry and economy, be a source
29 St Michael. Q. of Wirt. b.	of wealth to its possessor—how
30 St Jérôme. Low tides. colder	often do we see it grown over



New ☉, 5th d 5h 31m eve						First ☽, 13th d. 7h 46m eve									
D	D	☉	☉	Days	☉	C.R.	C	C's	High						
M	W	rises	sets	lent'h	dec.S.	& S.	south.	place.	water						
1	Sa	6	13 5	47	11	34	2	59	1	21	8	40	heart	3	50
2	B	6	14 5	46	11	32	3	22	2	27	9	32	heart	4	42
3	M	6	16 5	44	11	28	3	46	3	33	10	22	belly	5	32
4	Tu	6	17 5	43	11	26	4	9	4	39	11	11	belly	6	21
5	W	6	19 5	41	11	22	4	32	sets.	11	58	reins	7	8	
5	Th	6	20 5	40	11	20	4	55	6	34	ev.	43	reins	7	53
7	Fr	6	22 5	38	11	16	5	18	7	61	30	secrets	8	40	
8	Sa	6	23 5	37	11	14	5	41	7	36	2	14	secrets	9	24
9	B	6	25 5	35	11	10	6	4	8	93	0	secrets	10	10	
10	M	6	26 5	34	11	8	6	27	8	45	3	48	thighs	10	56
11	Tu	6	27 5	33	11	6	6	50	9	28	4	33	thighs	11	43
12	W	6	29 5	31	11	2	7	13	10	13	5	21	knees	ev.	31
13	Th	6	30 5	30	11	0	7	35	11	6	6	16	knees	1	20
14	Fr	6	32 5	28	10	56	7	58	morn.	6	58	knees	2	8	
15	Sa	6	34 5	26	10	52	8	20	0	0	7	47	legs	2	57
16	B	6	35 5	25	10	50	8	42	1	0	8	36	legs	3	46
17	M	6	37 5	23	10	46	9	5	2	1	9	25	feet	4	35
18	Tu	6	38 5	22	10	44	9	27	3	6	10	15	feet	5	25
19	W	6	40 5	20	10	40	9	48	4	14	11	6	head	6	16
20	Th	6	41 5	19	10	38	10	10	5	25	11	58	head	7	8
21	Fr	6	43 5	17	10	34	10	32	rises	morn.	head	7	40		
22	Sa	6	44 5	16	10	32	10	53	6	42	0	52	neck	8	20
23	B	6	46 5	14	10	28	11	14	7	25	1	48	neck	9	4
24	M	6	47 5	13	10	26	11	35	8	15	2	46	arms	0	58
25	Tu	6	48 5	12	10	24	11	56	9	10	3	46	arms	10	56
26	W	6	50 5	10	10	20	12	17	10	13	4	46	breast	11	56
27	Th	6	51 5	9	10	18	12	37	11	18	5	46	breast	morn	
28	Fr	6	53 5	7	10	14	12	58	morn.	6	41	heart	1	51	
29	Sa	6	54 5	6	10	12	13	18	0	23	7	35	heart	2	45
30	B	6	55 5	5	10	10	13	38	1	29	8	25	belly	3	45
31	M	6	57 5	5	10	10	13	58	2	34	9	13	belly	4	23

Month



16m eve

High
e. water

3	50
4	42
5	32
6	21
7	8
7	53
8	40
9	24
10	10
10	56
11	43
ev.	31
1	20
2	8
2	57
3	46
4	35
5	25
6	16
7	8
7	40
8	20
9	4
10	58
10	56
11	56
morn	
1	51
2	45
3	45
4	23

1
1
1
1
1
1
1
2
2
2
2
B
2
2
2
2
2
2
B
3

These are the days, when sadness reigns,
 And calls her gloomy thoughts abroad;
 Coldly the sun beams on the plains,
 The withered leaves are on the ground:
 Shadows are gathering o'er the earth,
 The beauty of the spring is gone;
 The flowers that blush'd at summer's birth,
 Have bloomed and perished every one:
 Like budding hopes of youth, they grew — and died;
 O'er life's crushed flowers, how oft has memory sighed.

Full ☉, 21st d. 4h. 33m. morn. | Last ☽, 27th d. 7h 49m. eve.

DM | Holidays, weather, &c.

FARMER'S CALENDAR.

1		<i>Thicker clothing</i>	with bushes, briars & thistles; & the
B 18th	Sun. aft. Trin.	<i>'becomes</i>	fields badly arranged, the fences
3	Com C, sits at Halifax		out of repair, the land half tilled,
4		<i>necessary as</i>	the barn doors broken from their
5	♁ Stat.	<i>the mornings</i>	hinges, and the windows of the
6	High tides	<i>and evenings</i>	house filled with hats and rags,
7		<i>are getting</i>	presenting any idea but that of
8	Inf ♂☉♀	<i>very</i>	comfort. And on a nearer exami-
B 19th	Sun, aft Trin. St Denis	<i>cold</i>	nation, the picture is still dar-
10	♃ stat		kened. Look at his stock, his
11	Sup C. at Halifax Inf. C &		outhouses, his implements of
12	[Sess Peace at Lunenburg		husbandry; every thing is poor
13	Drunks low	[☽ apogee	and out of its place. Enter his
14	Low tides	<i>look out for</i>	dwelling; his home; that sacred
15		<i>a storm</i>	place in which are to be found
B 20th	Sun aft Trin	<i>becomes</i>	the only fruits of Eden which
17		<i>fine again</i>	have survived the fall—is do-
18	St Luke. Inf C & Sess Peace		mestic peace and happiness ever
19	[at Dorchester.		found within, where negligence
20	Tides rise.	<i>cool weather</i>	and ruin are without? Does not
21	♁ stat	<i>but bracing</i>	every thing wear the same as-
22	☽ perigee	<i>and very</i>	pect, and is there not inscribed on
B 21st	Sun aft Trin. ☉enters ♀	<i>fine for the</i>	every thing on which the eye can
24			rest, indolence and waste? Look at
25	Crispin. Inf C. & Sess Peace		the farm of the man who is dis-
26	[at Guysboro at Liverpool;		gent in his business, and prudent
27	Low tides [& at Sydney. c. B		in his concerns—his own spirit is
28	St Simon & St Jude	<i>season.</i>	infused into every thing around
29		<i>a violent storm is</i>	him—every thing is in repair, eve-
B 22d	Sun aft Trin,	<i>coming</i>	ry thing is in its place; every thing
31			is in Season; every thing evinces
			that the master's eye has seen and
			directed all his concerns.



New ☉, 4th d. 9h 24m morn. | First ☽, 12th d. 2h 30m eve

D	M	☉	☽	Days'	Sun's	☾ R.	☾	☾'s	High
		rises	sets	lent'h	dec.S.	& S.	south.	place.	water
1	Tu	6 58	5 2	10 4	14 17	3 37	10 0	reins	5 10
2	W	7 0	5 0	10 0	14 36	4 41	10 44	reins	5 54
3	Th	7 14	59 9	58 14	55 5	42 11	36	reins	6 40
4	Fr	7 34	57 9	54 15	14 sets.	eve 13		secrets	7 23
6	Sa	7 44	56 9	59 15	33 6	10 0	58	secrets	8 8
7	B	7 54	55 9	50 15	51 6	47 1	44	thighs	8 54
8	M	7 64	54 9	48 16	9 7	26 2	31	thighs	9 41
9	Tu	7 74	53 9	46 16	27 8	9 3	18	thighs	10 28
10	W	7 94	51 9	42 16	44 8	59 4	6	knees	11 16
11	Th	7 104	50 9	40 17	19 51	4 54		knees	eve 4
12	Fr	7 114	49 9	38 17	18 10	47 5	41	legs	0 51
13	Sa	7 134	47 9	34 17	35 11	47 6	30	legs	1 40
14	B	7 144	46 9	32 17	51 morn.	7 16		legs	2 26
15	M	7 154	45 9	30 18	7 0	48 8	4	feet	3 14
16	Tu	7 164	44 9	28 18	23 1	53 8	52	feet	4 2
17	W	7 174	43 9	26 18	38 3	0 9	42	head	4 52
18	Th	7 184	42 9	24 18	53 4	10 10	34	head	5 44
19	Fr	7 194	41 9	22 19	8 5	22 11	30	neck	6 30
20	Sa	7 204	40 9	20 19	22 rises.	morn. neck			7 17
21	B	7 224	38 9	16 19	36 6	1 0	27	arms	8 0
22	M	7 234	37 9	14 19	50 6	55 1	28	arms	8 48
23	Tu	7 244	36 9	12 20	37 55	2 30		breast	9 40
24	W	7 254	35 9	10 20	16 9	13 32		breast	10 42
25	Th	7 264	34 9	8 20	28 10	9 4	31	heart	11 41
26	Fr	7 274	33 9	6 20	40 11	15 5	27	heart	morn.
27	Sa	7 284	32 9	4 20	52 morn.	6 19		belly	1 29
28	B	7 294	31 9	2 21	30 22	7 8		belly	2 18
29	M	7 304	30 9	0 21	14 1	27 7	54	reins	3 4
20	Tu	7 314	29 9	58 21	25 2	29 8	39	reins	3 49
30	W	7 314	29 9	58 21	35 3	30 9	23	reins	4 33

KI Month.



h 30m eve

C's	High
place.	water
ins	5 10
ins	5 54
ins	6 40
crets	7 23
crets	8 8
ighs	8 54
ighs	9 41
ighs	10 28
nees	11 16
nees	eve 4
gs	0 51
gs	1 40
gs	2 26
et	3 14
et	4 2
ead	4 52
ead	5 44
eck	6 30
eck	7 17
ms	8 0
ms	8 48
east	9 40
east	10 42
art	11 41
art	morn.
lly	1 29
lly	2 18
ms	3 4
ins	3 49
ius	4 33

I
F
n
1
2
3
4
5
B
7
8
9
10
11
12
B
14
15
16
17
18
19
B
21
22
23
24
25
26
B
28
29
30

'Twas autumn's stormy hour,
 The wild winds murmured in the yellow wood;
 The sere leaves, rustling in the naked bower,
 Were whirled in eddies to the mountain flood;
 Dark clouds enthralled the west; an orb of blood,
 The red sun, pierced the hazy atmosphere;
 And torrent murmurs broke the solitude,
 Where straying lonely, as with steps of fear,
 I marked the deepening gloom that shrouds the fall
 year.

Full ☉, 19th d. 2h 42m. eve.		Last ☾, 26th d. 6h 13m. morn.	
DM	Holidays, weather, &c.	FARMER'S CALENDAR.	
1	All Saints. Inf. C Sess. Peace	This is the most suitable	
2	All souls. [at Annapolis.	time for transplanting fruit	
3	Prs Sophia b 1777. ☐ ☉ ☿	trees of all kinds. Tie up all	
4	High tides	new planted trees to stakes,	
5	Powder Plot 1605. <i>unpleasant</i>	especially those that are ex-	
B	23rd Sun. aft Trin	posed to the winds: lay some	
7	Commrs. C. sits at Halifax	light litter over the roots of	
8	Prs Augusta Sophia b 1768. Inf	the more tender kind of trees	
9	[C & Sess Peace at Kentville	to protect them from frost.	
10	[& at Arichat C B ☾ apogee	Plough deep such land as is	
11	☉ runs low. <i>fine clear weather</i>	intended for Indian corn	
12	Low tides	next season, especially if it	
B	24th Sun aft Trin.	is accustomed to be eaten by	
14		cut or grub worms, and they	
15	Inf C & Sess P. at Port Hood, c	will be destroyed. The best	
16		method of preserving beets,	
17		carrots, &c. is to pack them	
18		separately in dry earth in a	
19		warm cellar.	
B	25th Sun. aft Trin	<i>December.</i>	
21	☾ runs high	<i>fine</i> "Poor Robin" for 1757,	
22	☉ enters ↑	says pleasantly enough, "now	
23	St Clement	comes December; after which,	
24		January, for new-years gifts;	
25		February, for pancakes and	
26	St Catharine	Valentines; March for leeks,	
B	Advent Sunday.	for the Welchmen; April for	
28		fools; May for milk-maids	
29		and their garlands; June for	
30	St Andrew	<i>month</i> green peas and mackerel.	



New ☉, 4th d. 3h 33m morn | First ☽, 12th d 7h 8m morn

D	D	☉	☉	Days,	☉	C.R.	☾	C's	High
M	W	rises	sets	lent'h,	dec.S.	& S.	south,	place.	water
1	Th	7	32 4	27	8	56 21 45 4	28	10 6	secrets 5 16
2	Fr	7	33 4		8	54 21 54 5	27	10 50	secrets 6 0
3	Sa	7	34 4	26	8	52 22 3 6	26	11 35	thighs 6 45
4	B	7	34 4	26	8	52 22 11 sets.	ev. 21		thighs 7 31
5	M	7	35 4	25	8	50 22 20 6	0 1	7	thighs 8 17
6	Tu	7	36 4	24	8	48 22 27 6	55 1	55	knees 9 5
7	W	7	36 4	24	8	48 22 34 7	38 2	43	knees 9 53
8	Th	7	37 4	23	8	46 22 41 8	31 3	30	legs 10 40
9	Fr	7	37 4	23	8	46 22 47 9	28 4	16	legs 11 26
10	Sa	7	38 4	22	8	44 22 53 10	28 5	3	legs ev. 13
11	B	7	38 4	22	8	44 22 58 11	32 5	50	feet 1 0
12	M	7	39 4	21	8	42 23 3 morn.	3	35	feet 1 45
13	Tu	7	39 4	21	8	42 23 8 0	34 7	22	head 2 32
14	W	7	39 4	21	8	42 23 12 1	38 8	11	head 3 21
15	Th	7	39 4	21	8	42 23 15 2	47 9	2	neck 4 12
16	Fr	7	40 4	20	8	40 23 18 3	58 9	57	neck 5 7
17	Sa	7	40 4	20	8	40 23 21 5	11 10	55	arms 6 5
18	B	7	40 4	20	8	40 23 23 6	23 11	57	arms 7 0
19	M	7	40 4	20	8	40 23 25 rises.	morn.		breast 7 46
20	Tu	7	40 4	20	8	40 23 26 6	27 1	0	breast 8 32
21	W	7	40 4	20	8	40 23 27 7	37 2	2	heart 9 16
22	Th	7	40 4	20	8	40 23 27 8	46 3	2	heart 10 12
23	Fr	7	40 4	20	8	40 23 27 9	53 3	58	heart 11 8
24	Sa	7	40 4	20	8	40 23 28 11	4 4	50	belly morn.
25	B	7	40 4	20	8	40 23 25 morn.	5	40	belly 0 50
26	M	7	40 4	20	8	40 23 23 0	8 6	25	reins 1 35
27	Tu	7	40 4	20	8	40 23 21 1	11 7	15	reins 2 20
28	W	7	39 4	21	8	42 23 19 2	10 7	52	secrets 3 2
29	Th	7	39 4	21	8	42 23 16 3	9 8	35	secrets 3 46
30	Fr	7	39 4	21	8	42 23 12 4	6 9	20	secrets 4 30
31	Sa	7	39 4	21	8	42 23 8 5	2 10	5	thighs 5 15

loath

noon

morn

High
water

5 16

6 0

6 45

7 31

8 17

9 5

9 53

10 40

11 26

ev. 13

1 0

1 45

2 32

3 21

4 12

5 7

6 5

7 0

7 46

8 32

9 16

10 12

11 8

morn.

0 50

1 35

2 20

3 2

3 46

4 30

5 15

1850

1851

1852

1853

1854

1855

1856
1857
1858
1859
1860
1861
1862
1863
1864
1865
1866
1867
1868
1869
1870
1871
1872
1873
1874
1875
1876
1877
1878
1879
1880
1881
1882
1883
1884
1885
1886
1887
1888
1889
1890
1891
1892
1893
1894
1895
1896
1897
1898
1899
1900

Hark, friends, it strikes :— the year's last hour :
 A solemn sound to hear
 Come, fill the cup, and let us pour
 Our blessing on the parting year.
 The years that were, the dir, the gray,
 Receive this night, with choral hymn,
 A sister shade as lost as they,
 And soon to be as gray and dim
 Fill high : she brought us both of weal and wo,
 And nearer lies the land to which we go.

Full ☉, 19th d. 0h 55m morn | Last ☾, 25th d 7h 56m eve
 ☽ | Holidays, Weather. &c | FURNER'S CALENDAR.

1		very cold	beans and bacon, and what
2		weather, and the	not—[this is a plentiful time ;]
3	Tides rather high	nights	July for hay in the country ;
B	2d Sun in Advent	long and	August for corn ; September
5	Com C. at Halifax.	☾ ap	for oysters ; October for brew-
6	Sess Peace at Halifax		ing good beer ; and Novem-
7	☐ ☺ ♀	dark	ber for drinking it. after all
8	Concep. of B V Mary	show	these are past, some for wor-
9	♁ ☺ ♀ ♀	may be	king, but all for eating and
10		expected.	drinking, after all comes De-
B	3d Sun in Advent	pleasant	cember, with the barns full of
12	Low tides	in the	corn, the larders full of beef
13	Inf C at Halifax		and pork, the barrels full of cy-
14		middle of the day.	der, the oven full of Christ-
15		look out for a	mas-pies, the pocket stored
16		snow storm	with money, the masters and
17	♀ gr. elong		mistresses full of charity, and
B	4th Sun in Advent	cold	the young men and maids full
19	☾ per. Very high tides		of play. Truly I know not how
20	Inf C & Sess Peace at Digby		better to conclude this short
21	St Thomas	the shortened	summary of agreeable infor-
22	☺ enters ♀	day and	mation, than by wishing that
23		long and sun	this description of the present
24		proclaim the	month, and the close of the
B	Christmas Day	close of	present year, may be com-
26	St Stephen. Low tides.	the	pletely realized, with all hear-
27	St John.	aged year,	ty and honest wishes for the
28	Innocents.	which ends	signal happiness and prosper-
29		with fine	ity of A D. one thousand
30		and pleasant	eight hundred and thirty one.
31		weather	

PROVINCE OF NOVA-SCOTIA.

Lieutenant-Governor and Commander in Chief of the Province of Nova-Scotia and its Dependencies, and Commander of the Forces in Nova-Scotia, New Brunswick, Prince Edward Island, &c. &c. &c. His Excellency Lieutenant General Sir PEREGRINE MAITLAND, Knight Grand Cross of the Most Honourable Military Order of the Bath, &c. &c. &c.

HIS MAJESTY'S COUNCIL*

Honourable Sampson Salter Blowers, President.

Honourable and Rt Rev John, Lord Bishop of Nova Scotia, Hon Michael Wallace, Chas Morris, Thos N. Jeffery, Brenton Halliburton, Hibbert N Binney, Enos Collins, Simion B Robie, Chas R Prescott, Samuel Cunard and

Clerk, Sir R D George, Bt.; asst clerks, Wm Hill and John C Halliburton, Esqrs. Chaplain, Revd Robert Willis, D D

HOUSE OF ASSEMBLY

S. G. W. ARCHIBALD, Esquire, Speaker.*

COUNTIES

Halifax
 † S G W Archibald, † Wm Lawson,
 † Geo Smith and Jotham Blanchard, Esqrs.

Annapolis † Wm H Roach and † Jno Johnston, Esqrs

Cumberland † Alex Stewart and † Joseph Caley, Esqrs

Lunenburg † Wm Rudolf and John Creighton, Esqrs

Kings † Elisha DeWolf, jr and Saul Chipman, Esqrs

Queens † Joseph Freeman and † Jas R Dewolf, Esqrs

Hants † Benj Dewolf and Wm B Bliss, Esqrs

Shelburne † John Forman and Herbert Huntington, Esqrs

Sydney † John Young and † Thos Dickson, Esqrs

Cape Breton † Jas B Uniacke and Lawrence Kavanagh, Esqrs

TOWNSHIPS

Halifax
 † Chas R F. irbanks and Stephen W. Deblois, Esqrs

Truro † Alex Archibald, Esq

Onslow † Robt Dickson Esq

Londonderry † John Wier, Esq

Annapolis † Jas R Lovett, Esq

Granville † Timo hy Ruggles, Esq

Digby, Charles Budd, Esq

Lunenburg † Jno Heckman, Esq

Amherst, † Jas S Morse, Esq

Horton, † Jas Harris, Esq

Cornwallis, † John Morton, Esq

Windsor, † David Dill, Esq

Falmouth, † Wm Shey, Esq

Barrington, † Jno Homer, Esq

Liverpool, Jas Bars, Esq

Newport, Felix Cochran, Esq

Shelburne, Chas Roche, Esq

Yarmouth, Clements Esq

† Members of the former House.

Rev R. Fitz Uniacke A M Chaplain; John Whidden Esq Clergy, J F Gray Esqr Asst Clerk--Jno Jas Sawyer, Esqr, Sergeant at Arms--Matthew Forrester, Asst. Sergt at Arms, Jno Gibbs Messenger and Door Keeper

*The Members of his Majesty's Council and the Speaker of the House of Assembly are Justices of the Peace throughout the Province

PROVINCIAL OFFICERS—Treasurer, Hon M Wallace; Secretary, Sir R D George, Bt; Surveyor Genl of Lands, Hon Chas Morris; Comr of Crown Lands, John Spry Morris, Esq; Registrar of Deeds, &c Sir R D George, Bt; Dep Reg Wm Hill, Esq; Surrogate General, John Spry Morris, Esq; Principal Inspector of Pickled Fish for the Province, Jonathan Tremain, Esq. Postmaster General for N S and N B, John Howe, Esq

COURT OF CHANCERY—Chancellor, His Excellency Sir P Maitland; Master of the Rolls, Hon S B Robie, LL.D; Masters in Chancery, Hon B Halliburten; Lewis M Wilkins, Peleg Wiswell and J G Marshall Esqrs; Registrar, H H Cogswell Esq; Counsellors and Solicitors, the Baristers and Attornies of the Supreme Court.

COURT OF ERROR, MARRIAGE AND DIVORCE—His Majesty's Council; Advocates and Proctors, the Barristers and Attornies of the Supreme Court.

COURT OF VICE ADMIRALTY—Judge, Hon S S Blowers; Advocate Genl ————, Solicitor Genl. S G W Archibald, Esq L L D; Registrar, L Pennell, Esq; Dep Registrar, J S Tremain, Esq Marshall, J Putnam, Esq; Dep Marshall, S W Deblois Esq. Advocates and Proctors, the Barristers and Attornies of the Supreme Court.

COURT OF ESCHEATS AND FORFEITURES—Commissioner, Hon Michael Wallace; Registrar, Sir R D George, Bt. Dep Reg Wm Hill Esqr.

SUPREME COURT—Chief Justice, Hon Sampson Salter Blowers; Puisne Judges Hon B Halliburton Lewis M Wilkins and Richard J Uniacke Esqrs; Associate Judge, P Wiswell, Esq; Attorney General ————; Sol Gen S G W Archibald, Esq L L D. King's Counsel, Wm Hill, C R Fairbanks and ————, Esqrs. Clerk of the Crown and Prothonotary throughout the Province, Wm Thompson, Esq; Deputy J W Nutting, Esq.

BARISTERS AND ATTORNIES AT LAW OF THE SUPREME COURT RESIDING IN THE PROVINCE

Halifax—H H Cogswell, D S Clarke, S G W Archibald, J W Nutting, William Hill, C R Fairbanks, Jas W Johnston, W Q Sawers, N W White, W B Bliss Beamish Murdoch, Alexander Primrose, James S Tremain, Chas Twining, Jas B Uniacke, J J Sawyer, J F Gray, W Fleigher, Jas Stewart Clarke, Wm Young, C W H Harris, Hugh Hartshorne, E H Harrington, Law O C Doyle, John C Halliburton, W Bowman, W H Keating, Wm Sutherland and Thomas B Aitken Esqrs.

Pictou; Thos Dickson, Jotham Blanchard, Henry Blackadar, Martin Wilkins, & Edw Roach, Esqrs — Truro; Jona Marsters, John D Archibald, & Geo H Emerson, Esqrs. — Annapolis; H Goldsmith, John Johnston, Wm H Lee, Jas A Denison, C T O MacColla, Esqrs — Digby, G K Nicholls, Esq. — Bridge- town; Steph Bromley, Esq. — Amherst; James S Morse

Alex Stewart, Chas D Roach, & Silas C Morse, Esqrs --- Kentville; John Whidden, Jno C Hall, Steph H Moore, & Wm F Smith, Esqrs. --- Windsor; H A Emerson, L M Wilkins, Harry King, Esqrs. --- Newport; D D Stewart, Esq. --- Antigonish; John Thos Hill, & Alex McDougall, Esqrs: --- Yarmouth, John Foreman, Esq. --- Guysborough, W F Des Barres, Esq. --- Liverpool; Wm Stearns, S P Fairbanks, Snow Parker Freeman, Esqrs. --- Lunenburg. Jno Creighton, G F Solomon, Chas B Owen, & Chas Bolman, Esqrs. --- Chester, Wm Greaves, Esq. --- Cape Breton, (Arichat) Wm C Delaney, & Jas Turnbull, Esqrs. (Sydney) R Gibbons and E M Dodd, Esqrs

Non-residents practising in Cumberland—E B Chandler and James Stewart, Esqrs.

Nova-Scotia Barrister's Society.

Patrons, His Excellency the Chancellor, the Honorable the Chief Justice.

Honorary Members, the Judges of the Supreme Court; Treasurer, H H Cogswell, Esq; Secretary and Librarian, J W Nutting, Esq.

Committee for 1831—S G W Archibald, C R Fairbanks and J W Johnston, Esqrs

Commissioners of the Revenue.

Hon M Wallace, Hon S B Robie, Wm Lawson, Law Harts-horne, and H H Cogswell, Esqrs Wm Newton, Esq clerk.

Commissioners for Light Houses.

Hon Saml Cunard, Thos Maynard and John Douglas, Esqrs. SHUBENACCADIE CANAL COMPANY—President, Hon Michael Wallace. Vice Presidents, Hon T N Jeffery, Hon S Cunard. Directors—James Bain, L E Piers, S W Deblois, M G Black J Allison, L Hirtshorne, J N Shannon, M Tobin, and Saml Head, M.D, Esqrs. C R Fairbanks, Sec'y and Treas. Francis Hall Esq Engineer.

King's College Windsor.

Patron, His Grace the Lord Archbishop of Canterbury, Visitor, the Lord Bishop of Nova-Scotia.

Governors, His Excellency the Lieutenant Governor, the Right Rev'd the Lord Bishop of Nova-Scotia, the Hon the Chief Justice, the Judge of the Court of Vice Admiralty, the Speaker of the House of Assembly, the Attorney General, the Solicitor General, the Secretary of the Province, the Revd the President of the College and the Revd Dr. Cochran.

President & Professor of Divinity and Hebrew, the Rev Chas Porter, D.D.; Vice President, Professor of Grammar, Rhetoric and Logic, and acting Professor of the moral Sciences and Metaphysics. Rev William Cochran, D.D.; Fellow and Bursar, Rev William B King, A.M.; Acting Professor of Mathematics, Natural Philosophy and Astronomy, John Stevenson, A.M.; Sec'y & Treasurer, _____ Esq; Librarian, _____; Academy under the direction of the Governors of King's College. Principal, Rev Fras Salt, M.A.

TERMS.—Sept. 1st—Michaelmas Term commences, and ends on the 15th Dec. Jan. 15, Hilary Term commences, and ends on the Saturday preceding Palm Sunday.

Monday after Easter Monday—Easter Term commences, and ends Saturday se'nnight before Whit Sunday.

The morrow of Trinity Sunday—Trinity Term commences, and ends on the 1st of July.

PICTOU ACADEMY.

Governed by fourteen Trustees, who are to profess, either the Presbyterian system of Religion, or that of the Church of England. Trustees, Hon S B Robie, L L D, S G W Archibald, Esq L L D, Rev Thos McCulloch D D, Duncan Ross, George Smith, Rev Jno McKinley A M, Jas Foreman, Alex Grant, John Patterson, Robt McKay, Jno McLean, Wm Matthewson, and Jas Robson. Head master, Rev Thos M'ulloch, D D.; Asst Mr M McCulloch; Sec'y, Rev Jno McKinley.—Terms—first term commences 1st April. second term, 1st Octr. each term lasts four months.

Clergy of the Established Church in N. S.

The Hon. and Rt. Rev, John, Lord Bishop, of Nova-Scotia New-Brunswick and their Dependencies.

Halifax---Ven. Robt Willis, D.D. Archdeacon and Rector of St Paul's; Rev Fitz. R. Uniacke, A.M. Rector of St Georges; Rev J T Twining, D D. Garrison Chaplain---Windsor, Rev Chas Porter, D D. Pres. of K C. and Rector of Newport Rev Wm Cochran D D. Vice Pres. and Rector of Falmouth Rev Wm B King, A M. Tutor and visiting Missionary; Rev Wm C King, A M; Rector of University Church; Rev Fras. Salt, A M. Princp. Collegiate School; Digby, Rev Roger Viets A B; Annapolis Rev Jno Milledge, L L D; Aylesford Rev Edwin Gilpin, A B; Granville; Rev Fras Whalley; Weymouth; Rev Alfred Gilpin A B; Yarmouth, Rev T A Grantham A M; Horton, Rev Jno Clarke A M; Cornwallis, Rev J Moore Campbell A M. and Rev. Robt Norris A M (retired); Rawdon, Rev Geo W Morris A B; Sackville Rev Jno Conolly A M; Dartmouth Rev M B Desbrisay A B; Chester Rev James Shreve A B; Lunenburg, Rev Jas C Cochran, A B. and Rev J W Weeks A B; Liverpool Rev J T T Moody A B; Shelburne Rev Thos B Rowland LLD; Truro Rev Jno Burnyeat, Visit Miss: Amherst Rev R B Wiggins, A B; Antigonish, Rev Thos H White A B; Guysboro' Rev Chas W Weeks A M; Pictou, Rev Chas Elliott, A B. Bridgetown, Rev J H Clach, A M; Sydney, C B, Rev Chas Ingles, A B; Arichat, Rev Jas A Shaw.

Ministers of the Established Church of Scotland.

Halifax, St Matthew's Church, Rev Jno Scott; St Andrew's, Church, Rev Jno Martin. Dalhousie College, Rev T Aitken, A M; Dartmouth, Rev Jas Morrison; Shelburne, Rev Gavin Lang; Cornwallis, Rev Wm Forsyth; Horton, Rev Geo Struthers; Pictou Town, Rev Ken J McKenzie; East River, Rev Don A Fraser; Upper Settlement, Jno McRae; West River, Merigomish, R Dugald, McKeichan.

---Kent-
Wm E
s, Harry
igonish;
th, John
Esq---
er Free-
on, Chas
ves, Esq
urnbull,
Chandler
rable the
Court ;
rarian, J
banks and
aw Harts-
q clerk.
glas, Esqrs
on Michael
S Cunard.
M G Black
Saml Head,
Francis Hall
erbury,
vernor, the
e Hon the
airalty, the
eneral, the
e Revd the
an.
e Rev Chas
r, Rhetoric
ciences and
w and Bur-
rofessor of
y, John Ste-
s Librarian,
action of the
as Salt, M A.

Presbyterian Church of Nova-Scotia.

PRESBYTERY OF TRURO.—Londonderry, Rev J Brown; Truro, Rev J Waddel; Douglas, Rev JS Crowe; Musquodobit, Rev Jno Sprott; Economy, Rev A Kerr; Sewiacke Rev J Smith.

PRESBYTERY OF PICTOU—West River, Rev D Ross; River John, Rev J Mitchell; Merigomish, Rev Wm Patrick; Antigonish, Rev T Trotter; Miramichi, Rev J Thompson; St Mary's, Rev A Lewis; Mabou, Rev W Millar; Pictou Town, Rev J McKintley M; Upper Settlement (East River) A McGilavery; Richibucto, Rev J McLean; Tatamagouche, Rev H Ross.

PRESBYTERY OF HALIFAX—Upper Shubenacadie, Rev R Blackwood; Windsor, Rev J Murdoch.

PRESBYTERY OF PRINCE EDWARD ISLAND—Prince Town, Rev J Keir; St Peters, Rev R Douglas; Richmond Bay, Rev W McGregor; Bedeque, Rev R S Paterson; New London, Rev H Dunbar.

Rev Thos McCulloch, D D Professor of Divinity; Rev Jas Robson, Synod Clerk; Rev D Ray, Preacher; Moderator.

Synod meets annually at Pictou, of June

Clergy of the Roman Catholic Church.

Right Rev. Dr Wm Fraser, Bishop of Tanen, and Vicar Apostolic of Nova Scotia. Rev John Laughnan, Halifax; Rev Dennis Geary, Chezetcook; Rev James Dunphy, Prospect; Rev Mr Sygogne, St Mary's Bay; Rev John B Morin, Argyle; Rev Mr Boland, Pictou; Rev James Grant, Manchester; Rev Pere Vincent, Tracadie; Rev Mr Francis, Pomket; Rev George McEageny, Sydney; Rev Mr McLeod, Bras d'Or; Rev Dennis Lawlor, St Peters.

Wesleyan Missionaries.

Halifax, Rev Wm Croscombe. Rev Taylor, and Rev Wm Black, supernumerary.—Liverpool, Rev H Pope.—Lunenburg, Rev George Miller.—Shelburne, Rev Thos H Davis.—Horton, Rev Robt H Crane.—Windsor, Rev Stephen Bamford.—Newport, Rev J o Marshall and Rev Wm Bennett, supernumerary.—Parrsboro' Rev Wm Temple.—Wallace, Rev W McDonald.—Yarmouth, Rev Wm Smith.—Sydney, Rev M Cranswick.—Ship Harbour, Rev J G Hennegar.

Baptist Ministers.

Halifax, Rev John Burton and Rev H K Green, AM.—Cornwallis, Rev Edw Manuing. Rev Wm Chipman and Rev D Harris.—Horton, Rev Thos Harding, and Rev Jas Stephens; Aylesford Rev Ezekiel Masters; Parrsboro', Rev Wm Barton. Annapolis, Rev Wm Elder.—Granville, Rev Thos Ansley; Nictau Rev J E Bill Digby, Rev Peter Grandall; Clements, Rev Israel Potter; Brier Island, Rev Saml Bancroft; Newport, Rev George Dimock; Rawdon, Rev Rich McLearn; Falmouth, Rev R B Dickie; Yarmouth, Rev H Harding, and Rev Wm Burton; Scissiboo, Rev Danl McGrigor; Rugged Islands, Rev John Craig; Hammond's Plains, Rev Geo Richardson; Chester, Rev Joseph Dimock, and Rev R W Guisingham; Onslow, Rev Jas Munro, Amherst, Rev Chas Tupper and Saml McCully.

Licentiates.—Ford, Hally, and Minard Parker. Lunenburg, John Bezanon, and Anny Dimock Chester; Westley Horton, Aylesford Theo H Porter and Joshua Cogswell Cornwallis.—Rev J Pryor, AM Principal in the Seminary at Horton,

MEMORANDUM— The Sitings of Courts, Names of Officers, &c. will be found arranged under the respective counties to which they belong.

COUNTY OF HALIFAX

Town and district of Halifax Proper—High Sheriff of the County, John James Sawyer, Esq; Coroner, James F. Gray, Esq.

High Court of Chancery, held before the Master of the Rolls, ever Monday.

Supreme Court sits at Halifax on the 2d Tues of Jan 3rd Tues. April, 2d Tues. of July, and 2d Tues. of Oct.

Inferior Court sits on the 2d Tues of March, June, Sept. and Dec.—Judges. Hon M Wallace, Jas Forman, sen Jno Howe, sen. and Wm Lawson, Esqrs.

Commissioners' Court sits the 1st Monday of every month. Commrs Jas Forman Senr, Jas Tobin, Rich Tremain, Jno Liddell, and D S Clarke, Esqrs. Clerk, Jas Stewart Clarke, Esq.

Police office open every day throughout the year, (Holidays excepted.)—Justices, John Liddell, H Yeomans, Mat. Richardson, Esqrs. D S Clarke, Esq. clerk.

Sessions of the Peace held on the 1st Tues of March, June, Sept. and Dec.

JUSTICES OF THE PEACE OF AND FOR THE COUNTY RESIDING IN THE DISTRICT OF HALIFAX.

Jas Forman, senr. [Custos Rotulorum] ; John Howe, senr. Rufus Fairbanks, Saml Head, M D, Jno Liddell, Rich Tremain, H Yeomans, P McNab, Wm Lawson, S Albro, J Albro, M Tobin, M Richardson, J D Hawthorne, Thos Holland, Isaac Rayne, H Y Mott, Jas Money, Jno Allan, G N Russell, John Leander Starr, Wm H Roach, H A Gladwin and Jno S Morris, Esqrs. D S Clarke, Esq. c p.

COMMISSIONERS FOR VISITING THE POOR-HOUSE

Hon C Morris, Hon T N Jeffery, John Stayner, Rich Tremain, H Yeomans, J Clark, M Tobin, G N Russell, Jas Forman, senr. and Thos Pyke, Esqrs.

COMMISSIONERS OF STREETS

Halifax—H. H. Cogswell, G N Russell, Joseph Allison, James H. Tidmarsh & James Tremain Esqrs— Dartmouth Saml Albro, Hugh Hartshorne and E H Lowe Esqrs. Health Officer for the Port of Halifax, Charles W Wallace Esq. n s.

OFFICERS OF H. M. NAVAL YARD.

A F Jones, Esq. mast. shipwright; John Douglas, Esq. mast. attendant; Mr Jas Ritchie, mast. shipwright's clerk; Mr Jas A McEwen, and Mr Felix King, clerks; Mr Jas Mathews, gate porter.

Officers of the Provincial Revenue.

Hon H N Binney, collector of impost and excise; Andrew Richardson, Esq. gauger and weigher. James Barrett, Robert Hodges, and Geo Sherlock, waiters and shipping officers. Wm Cleaveland, collector of licence duty. Edw Duckett, sen. collector of light duty.

Officers of His Majesty's Customs.

Hon Thos N Jeffery, collector. John Wallace, Esq. comptroller. D H Watson & Jos Dean, Esqrs waiters and searchers. Edw Duckett sen; survey officer of shipping. F W Acheson and T Holden tide surveyors. R B Young, Errol Boyd, Alex Hays, tidesmen. Jas Wall and W Hays, boatmen.

Esq Warehouse Keeper. R Dimmett, Locker.

Comrs. to examine and Select Pilots for the Port of Halifax, under An Act passed in 1830 Entitled "an act to regulate the Pilotage of Vessels at the Port of Halifax" Michael Head RN, Jno Douglas, W Pryor, Jas H Tidmarsh and Edw Cunard Esqrs.

Halifax Banking Company.

Henry H Cogswell, Esq. President. Wm Pryor, Esq Vice President. Hon Enos Collins, Jas Tobin, Samuel Cunard, Jno Clark, Joseph Allison, Martin G Black, Esqrs Directors. N T Hill, Esq. cashier. Mr. J C Wilkie clerk. Jos Keefer, messenger.

Discount Days—Tuesdays and Fridays.

Hours of business—from 10 to 3 o'clock. Sundays and Holidays at the Public Offices excepted—Notes for discount to be left the day previous before 2 o'clock, with the cashier.

Fire Wardens of the Town of Halifax.

Rich Tremain, Esq. Chairman,—Jno. Albro, Esq. sec'y. & treasurer. South Suburbs, Edw Pryor jr, C R Fairbanks and Jas Tremain, Esqrs.—St Peter's Ward, J Albro, J E Fairbanks and Jas Bain, Esqrs.—St Matthew's Ward, L Hartshorne and J A Barry, Esqrs.—St Paul's Ward, G N Russell and W A Black, Esqrs.—County Court House Ward, Jno Dupuy, and Thos Boggs, Esqrs.—St John's Ward, J Liddell, J Clark and Jos Allison, Esqrs.—North Barrack Ward, M Tobin and S W Deblois, Esqrs.—North Suburbs, J Dempster, S Cunard, and J N Shannon, Esqrs.

Committee of the Fire Wardens appointed to manage and direct at Fires—Rich Tremain, Thos Boggs, Jno Albro, E Pryor, and J Clarke, Esqrs—E Pryor and J Clarke, Esqrs to direct the Axemen.

Fire Engine Company for the Town of Halifax.**James Dechman, Captain**

First Division--David Hutton, Lieut; Henry Hill, Thos Mackie, Thos Pallister, Wm J Rogers, Wm Caldwell Donald McLennan, Timothy Conners, Wm Murray, J Wilkie J Mahony. H St. Andrews, Joseph Bennet, F Sturmy, Wm Liswell, Wm Flynn, H Langley, H G Hill, H Morris, & Jno Fox.

Second Division--Thos Cassedy, Lieut; Jas Carmichael, Edw Sturmy, J Drillio, Andw Crawford, Daniel McLean. Thos Wilson, Charles Hunter, Jeremiah Mullig, Jno Richardson, Benj Smithers, Jas Malcolm, Wm Crawford Jno Johnson, Joseph Scriven, Wm Miller, Thos Sutton, Thos Lownds, W G Anderson and Jno Anderson.

Third Division---Geo Little, Lieut; Henry Spike, Jas Thomson, R Haverstock, Saml Carten, Peter Manson, Jas Thomson 2d, Israel Thomas, R A Bigby, Secretary, Wm Dillen, & Geo Barlin.

Fourth Division---Michael Byren, Lieut; Elias Cabot, Jno West, Robt Norris, Alex Boyle, Robt Woodill, Philip Sparling, Jno Winters; Jas Smith, Honorary member and Treasurer.

AXE FIRE-MEN.---Robt Richardson, capt; Mich Creamer, lieut, Thos McKie, sec'y, Geo Jost, Peter Hall, Jno McNeal, Errol Boyd, Wm Marvin, Jas Grant, Henry Miller, Wm Strickland, Wm Rose, Matthew Lownds, Wm Johnston, Jas Mac-Nut, Patrick Mahony, Jno McPherson, Wm Fennerty, Samuel George Archibald Layng, Jas Lownds, truckman

National School-----Abel S Gore,

Acadian School-----Rev Jas Morrison, } masters

MAIL DAYS.---The Eastern and St John, N B. mails arrive in Halifax on Saturday at 3 o'clock, p.m. and made up every Wednesday at 1 o'clock, p. m.

The Western mails are made up at the Post Office on Mondays and Fridays at 4 p.m. and forwarded by the mail coach next morning, they arrive in Halifax every Monday and Friday at 7 p.m.

---ooxooo---

Officers of H. M. Ordnance.

J W Tapp, Esq. storekeeper. H Ince, Esq dep storekeeper. C H Fife, 1st clerk. J Forrester, 2d do. J E White, 3d do. W H Tapp, jr do. I Rigby, clerk bar. branch. C N Fife, foreman of carpenters. J Plummer, armourer. W Dalling, overseer of labourers. J Anderson, gate porter.

Engineer Department.

Col. G Nicolles, commanding Engineer; Capt C Rivers; Lieuts C McKenzie, S H Wentworth, and W H Ford. Clerk of the works. R Creed. Sen. clerks, Wm Rogers. Thos Goudge. G Creed, John Barron. Elwd Pryor, master carpenter. John McKenzie, foreman. Wm McDowall, master mason; W Gossip, master smith; P Dowling, office keeper and messenger.

EASTERN DIVISION.

Includes the Counties of Cumberland and Sydney, and Districts of Colchester and Pictou. Chief Justice of the Inferior Courts of Common Pleas and President of the Courts of Session in this Division—Jared Ingersoll Chipman, Esq.

COUNTY OF HALIFAX.**DISTRICTS OF COLCHESTER AND PICTOU.**

Supreme Court sits at Pictou on the last Tuesday of May, and 3d Tuesday of Sept. At Truro, on the 1st Tuesday of June and 4th Tuesday of Sept.

Inferior Court and Sessions of the Peace, held at Pictou on the 3d Tuesday of July and 4th Tuesday of January.

Assistant Judges, Hugh Denoon, George Smith, Robt Lowden, A M'Carra, & G Johnston Esqrs. And at Truro, on the 2d Tuesday of July and 3d Tuesday of Jan'y—Asst. Judges, Thomas I Brown, and Robt Dickson, Esqrs; dep proth'ys, Geo Dill, Esq. Colchester; Jas Skinner, Esq. Pictou.

Justices of the Peace—of and for the County residing in the Districts of Colchester and Pictou—Hugh Denoon, Jno Stewart, Robt Lowden, Sam Tupper, W Cutten John Dickson Wm M'Kay, Geo Roy Went Taylor, Jno Allen, Jas Skinner, Robert Dickson, George Smith, Jas Benvie, A Archibald, Jno Fraser, Nath Marsters, Thomas I. Brown, James Flemming, W Currie, Wm Matthewson, D M'Lean, R M'Kay, And M'Carra, E S Blanchard, Jas Carmichael, Jno Olding, G Johnston A Patterson Wm Mortimer, Jno Finlayson, Geo McLeod, Alex Campbell, J Fulton, D V Crow, Wm Logan, H Hatton, D Crichton, Sam Archibald 3d, Jno Holmes, Ken McLean, Adam Carr, and Jas Fraser, Esqrs.

Surrogate Judges—Colchester, S G W Archibald. Pictou, Geo Smith, Esqrs.

Comm'rs for taking Special Bail, on Actions dep'g in the S. Court.—Colchester, G Dill, Esq. Pictou, Jas Skinner and H Denoon, Esqrs.

Registrars of Deeds—Colchester, Israel Allison, Esq. Pictou, Hugh Denoon Esq.

Pictou—Col of Light Duties, R Corbett.—Col of Impost and Excise and Col of Customs, H Denoon, Esq.—Ditto for Colchester, J D Archibald, Esq. Col of light duties R Dickson.

Dep Sheriffs—Colchester, John Henderson, Pictou, J W Harris, Esqrs. Coroner J McKay. Health Officer Dr Johnston

Postmasters.—Pictou, Alex P Ross. Truro, Jon Graves; Gay's River, Samuel Moore, Esqrs.

Commrs of Streets; Robt McKay, John Patterson and George Campbell Esqrs. Pictou

COUNTY OF SYDNEY.

High Sheriff, Kenneth McDonald, Esq. — Dep. for the Lower District, Wm Heffernan. Coroners J H Weeks & J G Peabody. Supreme Court sits at Dorchester, on the 2d Tuesday of Sept—dep proth'y Alex McDonald, M D.

Inferior Court and Sessions of the Peace for the Upper District, held at Dorchester, on the last Tuesday of May and 3d Tuesday of Oct. Asst Judges, John Cunningham and Benj Ogden, Esqrs.

Justices of the Peace—T W Hierlihy, John Cunningham, Alex McDonald, M D, John McDonald, R N Henry, H McDonald Benj Ogden. Jas Randall. Wm Edge and Don Sinclair, Esqrs. R N Henry, Esq C P.

Surrogate Judge Alex McDonald, M D. Registrar. Ken McDonald, Esq. Dep. Registrar of Deeds, Jno Cunningham. Esq. Dep. Postmaster, R N Henry, Esq Antigomisho.

Inferior Court and Sessions of the Peace—for the Lower dis—held at Guysboro' on the 1st Tuesday of May and 3d Tuesday of Oct. Asst Judges, Jos Marshall, and Robt Hartshorne, Esqrs. Dep. Proth'y, Wen. Taylor, Esq

Comm'rs for taking Special Bail on Actions dep'g in the S. Court—Upper dis. Alex McDonald ; Lower dis. Wm Taylor, Esqrs

Justices of the Peace, Thos Cutler, Jos Marshall, Wm Atwater, Christian Miller, Robt M Cutler, Went. Taylor, Patrick Lannigan, C Archibald, Wm McKeene, T Glencross, D Campbell, H McDonald, R Hartshorne, Jno Newton, Jos Maxwell, Edward Langley, John Whitman, and George Norris, Esqrs. Mr W O Heffernan, C P. Dep. Reg. of Deeds, Thos Cutler, Esq. Surrogate Judge W. F. DesBarres, Esq. Postmasters, Robt M Cutler Esq. Guysboro' Hugh McDonald, Esq. Sherbrooke, St Mary's. Col. of Customs and Col of Impost and Excise, Duncan McColl, Esq.

COUNTY OF CUMBERLAND.

High Sheriff, Joshua Chandler, Esq. Coroners Jno Morse and W. W. Bent Esqrs.

Supreme Court sits at Amherst on the 2d Tues of June.

Inferior Court and Sessions of the Peace, held at Amherst on the 1st Tuesday of Jan'y and last Tuesday of June. Asst Judges, Thos Roach, D McFarlane, R McG Dickey and Wm Baker Esqrs S H Morse Esq. dep. proth'y.

Comm'rs for taking Special Bail on Actions dep'g in the Sup. Court, Chas Baker, Thos Roach, S H Morse and D McFarlane, Esqrs.

Justices of the Peace—Gilbert Purdy, Custos Rotulorum, Edw Baker, Gabriel Purdy, Thos Roach, D McFarlane, Wm Baker, Jno Black, Wm White, Geo Bergman, James M Nab, Thos Cooke, Step. Oxley, R McGowan Dickey, & Wm Baker, Esqrs. S C Morse, Esq. C P. Surrogate Judge, Alex Stewart, Esq. Registrar Court of Probates, A Stewart, Esq. Dep

Reg. of Deeds, Chas. Baker, Esq. Col of Impost and Excise, Thos Chapman, and Joshua Chandler Esqrs. Col of Customs, Mich Gordon, Esq.— Dep. Postmasters, SH Morse, Esq. Amherst; Gee Bergman, Esq. Pugwash, Josh Hustis, Esq Wallace. Col of Light Duties Joshua Chandler.

MIDDLE DIVISION

Includes the counties of Hants, King's, Queen's and Lunenburg—Chief Justice of the Inferior Courts of Common Pleas and President of the Courts of Session in this division, Thos C Haliburton, Esq

COUNTY OF HANTS

High Sheriff Charles J Wilkins Esqr.

Supreme Court sits at Windsor, on the last Tuesday of May and 4th Tuesday of Sept.

Inferior Court and Sessions of the Peace, held at Windsor on the 1st Tuesday of Jany and 1st Tuesday of July. Asst. Judges, Rev Wm Cochran, D. D., Wm H Shey and Jno Elder Esqrs.—Dep. proth'y. H Jenkins, Esq.

Comm'rs for taking Special Bail on Actions dep'g in the Sup Court, H Jenkins and Patriek Wright, Esqrs.

Justices of the Peace.—Jno. Emerson, Cus Rot. Wm Smith, Shubael Dimock, W Salter, J Walker Caleb Smith, W H Shey, Jno Smith, A Scott, J Parker, B Dewolf, W O'Brien, J Withrow, J Allison, J Dimock, J Elder, D Wier, R Smith, T King, B Casey, J Sentell, Benj Shillito, Jno Cochran, & Benj Smith, Esqrs.

Sur. Judge, L M Wilkins, Esq. Dep Reg of Deeds, Col of Imp. and Excise, and Dep. Postmaster, W Bowes, Esq.—Col. of Customs, Windsor, P Wright; Douglas, J D Archibald, Esqrs Comm'rs of Streets, P. Wright and D Dill, Esqrs

COUNTY OF KINGS

High Sheriff, Geo Chipman, Esq. Coroners, W C Moore, D Dewolf and Jas Allison, Esqrs.

Supreme Court sits at Kentville on the 1st Tuesday of June and 3d Tuesday of Sept. Inferior Court and Sessions of the Peace, held on the 3d Tues. of May and 2d Tues. of Nov.—Asst Judges, Jno Chipman, E Dewolf, W Campbell, W A Chipman and James D Harris, Esqrs. Dep proth'y and Com. for taking Special Bail on Actions dep'g in the Sup. Court, S L Allison, Esq

Justices of the Peace.—J Chipman, Cus. Rot.; E Dewolf, W Campbell, Wm A Chipman, Jas Ratchford, D Dewolf, S Bishop, J Wells, A Walker, S Demison, H V Baskirk, J Allison, D Lockart, J D Harris, W Chipman jr, H Harrington, J Maynard, C H Rand, J Lewis jr. S Beckwith, and D Whidden. Esqrs H Chipman C P. Sur Judge and Dep Reg of Deeds for Horton, Ayloford and Cornwallis, W Campbell, Esq. Ditto for Parrsboro, J Ratchford, Esq. Col of Imp and Excise and of Customs D Whidden, Esq. Postmasters, Elisha Dewolf Esq. Wolf ville Kentville, Jas Ratchford. Esq Parrsboro.

COUNTY OF QUEENS.

High Sheriff, Benj Knaut, Esq, Coroner, J Whitman, Esq.
 Supreme Court sits at Liverpool on the 1st Tues. of July.—
 Inferior Court Sess of the Peace held at Liverpool on the 4th
 Tues. of April and 4th Tues. of Oct. Asst Judges, J Newton,
 Jos Freeman, S Parker and Jas Dewolf, Esqrs. Dep proth'y.
 and Com. for taking Special Bail on Actions dep'g in the Sup.
 Court, J Rogers, Esq.—Justices of the Peace, J Newton,
 Cus. Rot. ; J R Dewolf, N Tupper, I Dexter, Jos Freeman,
 S Parker, Jas Gorham, Jno Bars, and Jas Dewolf, Esqrs. J Ro-
 gers, Esq C P. Sur. Judge, Collector of Imp. and Ex., and
 Col of Customs, J Newton, Esq. Dep Reg of Deeds and
 Postmaster, B Knaut, Esq.

Com'rs of Streets, J R Dewolf, Jno Roberts, & W Sterns, Esqrs
 Fire wards Jas Rogers, Jno H Dewall, Benj. Knaut, Paul
 Collins, Wm B Taylor and Stephen Collins senr. Esqr.
 Fire Engine Men James Barss (Capt) Wm McGill Jon Dewolf
 Wm Johnston, Wm Gold and Thos Freeman.

COUNTY OF LUNENBURG.

High Sheriff, Johu Henry Kaulback, Esq Coroner J C Ru-
 dolf Esqr.
 Supreme Court sits at Lunenburg on the last Tues. of June.
 Inferior Court and Sessions of the Peace held on the 2d Tues.
 of April and 2d Tues. of Oct. Asst Judges, J Pernette, G Mil-
 ler, & E James, Esqrs. Dep proth'y. and Comm'r. for tak-
 ing Special Bail on Actions dep'g in the Sup Court, D Owen,
 Esq—Justices of the Peace, E James, Cus. Rot. J Pernette, J
 Walker, J C Rudolf, John Evans, G Miller, W Alexander, Jno
 Heckman, T Godfrey, & Jno Hunt, Esqrs.—C B Owen, Esq
 C P. Sur. Judge, J Pernette, Esq. Reg'r, Geo T Solomon
 Esq Dep Reg of Deeds, P Rudolf, Esq. Col. of Imp. and
 Ex. T Godfrey, Esq. Prev. Officer, A S Bruce, Esq. Postm'r,
 J C Rudolf, Esq.
 Comrs of Streets, Wm Rudolf, Jno Creighton & Jno Heckman, Esqrs

WESTERN DIVISION

Includes the Counties of Annapolis and Shelburne. Chief Jus-
 tice of the Inferior Courts of Common Pleas and President of
 the Courts of Session in this District, THOS RITCHIE, Esq.

COUNTY OF ANNAPOLIS.

High Sheriff, E H Cutler, Esq. Coroners, Sil Snow. Wm
 Young, J R Lovett, and David Hall, Esqrs.

Supreme Court sits at Annapolis on the 2d Tues of June
 and 2d Tues of Sept. Inferior Court and Sessions of the Peace
 held at Annapolis on the 3d Tues of April and 1st Tues of Nov;
 & at Digby on the 1st Tues of July and 3d Tues of Dec. Asst,
 Judges, E Morton, A Snodgrass, C U Jones and W F Bonnell
 Esqrs. Dep proth'y, & Com taking Special Bail on Actions
 dep'g in the Sup. Court, E Cutler. Esq,

Justices of the Peace, E Thorn, Cus Rot. : Stephen Jones, M Shaw, T R Randolph, B Dodge, J Ruggles, E Morton, S V Bayard, J Whitman, P Lovett, J Morehouse, R Hankinson, J M Segoyne, W Jones, T Ritchie, J Querau, Jno Wiswell, jr. E Wheelock, W F Bonnell, C Jones, J Reed, C Jones, J F Randolph, W Bent, P Sanders, W Delancy, S Campbell, S Chesley S Hall, T Ruggles jr, J Ditmars, J Robertson, Robt Neiley, Anthony Hannan, Joseph Fitz Randolph, & Thos James, Esqrs. E Cutler; Esq C.P. Sur Judge. ———. Dep Reg'ts Deeds, East. Dis. Wm Winniett, Esq. Western, S Jones, Esqrs. . . . Col of Light Duty, of Imp. and Ex and Col of Customs, H Goldsmith, Esq. Dep Postm'rs, H Goldsmith, Esq, Annapolis; W F Bonnell, Esq Digby.

COUNTY OF SHELBURNE.

High Sheriff, John Bingay, Esq. Coroner, G Bingay, Esq. —
 Supreme Court sits at Shelburne on the 2d Tues of July. —
 Inferior Court and Sessions of the Peace for the dis of Yarmouth and Argyle, held at Tuskett Village on the 1st Tues. of May, and at Yarmouth on the 4th Tues. of Sept. Asst. Judges, S S Poole, J Lent, J N Bond, B D'Entremont and H G Farish, Esqrs Dep proth'y M Huntington, Esq—Ditto for the dis of Shelburne, held at Shelburne on the 2d Tues of May and 2d Tues of Sept.—Asst Judges, G White, W B Sargeant, J V Buskirk and T Crowell, Esqrs. Dep proth'y and com'r for taking special bail on Actions dep'g in the Sup Court, ; Justices of the Peace, G White. Cus Rot; S S Poole, B D'Entremont, J V Buskirk, Jas Dore, J N Bond, J Lent, Eb Crowell, H G Farish, T Crowell, J Bingay, G V Norden, A Laurens, J Kelly, B Bingay, J McKinnon, C Campbell, J Barclay, Rob Currie, Jno Homer, Esqs. C P. Sur. Judge, Gid White, Esq. Dep Reg of Deeds, for the Eastern dis. Esq. Western dis, H G Farish, Esq. Co'rs of Imp and Ex—Yarmouth, H G Farish, Esq—Shelburne, Jacob V Buskirk, Esq—Weymouth, R Hankinson Esq. Co'rs of Customs,—Shelburne, J V Buskirk—Weymouth, R Hankinson—Barrington, J Homer—Argyle, J McKinnon—Yarmouth, A V S Forbes, Esqrs. Collector Light duties for dis. Yarmouth C N Bond Esq. Postm'r, Jacob Weiser, Shelburne.

COUNTY OF CAPE BRETON.

Chief Justice of the Inferior Courts of Common Pleas, and President of the Courts of Sessions in this County, John G Marshall, Esq.

High Sheriff, John Fuller Esq. Coroners.—Jno Smith, Joseph Noad, & Jno McDonald, Esqrs

Supreme Court sits at Sydney on the last Tuesday of Aug and at Arichat on the 1st Tuesday of September. —
 Inferior Court and Sessions of the Peace for the Northern dis. held at Sydney on the 2nd Tues of March, and 4th Tues of

Oct; for the Southern dis. at Arichat on the 2d Tues of April and 2d Tues of Nov; and for the Western dis. at Port Hood on the 3d Tues April and 3d Tues of Nov. Asst Judges, T Crawley, J Leaver, C Hubert, J Jean & Wm Watts, Esqrs. Proth'y for the County, C E Leonard, Esq Sydney. Dep proth'ys, at Arichat, A Madden, Esq, at Mabou, J L Tremain, Esq. Justices of the Peace; J G Marshall, Cus. Rot.; A C Dodd, Thos Crawley, R Gibbons, C. Hubert, J Leaver, C E Leonard, R McKinnon, P H Clarke, C McNab, J Campbell, J Dodd, J Cameron, W Gammell, Wm Watts, A Madden, Hugh McDonald, John McKeen, N Paint, N H Martin, T E Chandler, J L Tremain, J Jean, P DeLisle, J S Ingraham, R Gammell, & Irad Hart, Esqrs. Rog'rs of Deeds—Western dis. J L Tremain—Southern, J Turnbull—Northern, C R Ward, Esqs.—Collector, J W Benn, Esq. Comptroller, C E Leonard, Esq Surveyor and Waiter, J Jean, Esq. Col'rs. of impost, Excise and of Light Duty, Chas E Leonard, Sydney—JL Tremain, W district—J Turnbull, Arichat. Dep Postmasters, Jos Noad, Sydney; Jno Fuller, Arichat; J McKeen, Port Hood; N Clough, Ship Harbour Surveyor Gent of Lands and Sur Judge, Thomas Crawley, Esq.

Health Officer for the Port of Sydney, Doctor Thos. E. Jean.

STAFF OF THE ARMY

In Nova-Scotia under the command of His Excellency * Lieut Genl. Sir Peregrine Maitland, K. C. B.

Aides-de-camp Capt Deedes, 34th f. and Lt Hon. Rob Boyle, 78th f; Military Secretary, Capt P. Maitland, 74th f; Dep. Adj. Gen, Lt Col H B Harris, h p 86 f; Dep. Q. M. G. Lt Col H G Broke; Major of Brigade, Major John Bazalgette, h p Unatt; Insp field officers of Militia, Lt Cols W. G Cochran h p. R R Loring and *W Marshall; Dep Com Genl, Geo Damerun Esq; Asst Com Genl. Charles A Clarke Esq; Dep Asst Com Genls Jas Slade. Oliver Goldsmith, Wm Low, Chas Williams, and Richard Inglis, Esqrs

Colin Allen, M D Surg to the Forces; Asst Surgs David Fitzcain, J Y Skelton, A T Jackson, Saml M Hadaway, Jno Stewart; Jno Carter, Apothecary to the Forces. J W Tapp, E. q Cr li-nance Store Keeper. Henry Ince, Esq. Dep Ordnance Store Keeper. Jas Blair, Esq. Barrack Master

Garrison of Halifax; Col Nicols, R E. Commandant, Lt J MacColla, Town Major. Rev J T Twining, D D Chaplain. Windsor, A McDougall, Esq. Barrack Master, Rev W C Kin, Chaplain. Annapolis, J Norman, Esq. Barrack Master, Revd J Milledge, LLD. Chaplain

OFFICERS OF THE ARMY.

Colonel NICOLLS, R. E. Commandant.

<i>Royal Staff</i>	"Niagara" Col	Ag Greenwood and Co.	T W Howe Adj Geo Harford
<i>Corps.</i>	Hen Bayly Lt gen	Ir Ag Atkinson	F P Glubb
"Egypt"	Lt Col		John Arnold
"Peninsula"	Hon G Cathcart Majors	34th (or Cumber- land) Regt.	Chas S Eustace
"Waterloo" captain	T Ger Ball	"Alubera"	J Fordyce
Henry Piers	Jno S Powell	"Vittoria"	R W Byron
Facings blue—	Capt's	"Pyrenees"	PMGLed. ngham
Lace silver.	J Fitzgerald, M	"Nivelle"	Adj T W Howe,
Ags. Greenwood & Co.	D Vans Machen	"Nive"	Q M. Tho Howe
	Simcoe Baynes	"Orthes"	Surg R Ranken
<i>Royal Artillery</i>	J H Maitland	"Peninsula" Col	A. S. Cha Bell
"Waterloo"	T Hart Davies	Sir T Macdougall	J Hendrick MD
Lt Col A Bredin	Alex Dirom	Brisbane, K CB	Facings yellow ; lace silver
Captains	C S Malet	Lt Gen	Agents, Macdon- ald & Co
G J Belsom	Cha Corkran	Lt Col.	Ir. do. Cane & C ^o
Thos Grantham	H W Hartley	R. Kelly	
1st Lieuts	Tho Kenyon	majors	
H Slade, q. m.	Lts	Rich Greives	52d (Oxford- shire)
F A Griffiths	H P Hill	Hon H S Fane,	Lt. Infantry.
W J Stokes	Alex Bourke	captains	"Hindoostan"
Jas Turner	T R Thompson	M McL Tew, m	"Vimiera"
Surg Wm Kobby	Wm Calder	Edw Conolly	"Corunna"
Blue—facings	Edm Gonnys	Rich Airey	"Busaco"
red; lace gold,	D Gardiner	Geo Ruxton	"Fuentes d'O- nor"
Pay. Greenwood,	Jas Byron	C B Brisbane	"Ciudad Rodri- go" "Badajoz"
Cox & co	Wm Senhouse	Hen Gascogne	"Salamanca"
	Jno Longfield	W N Orange	"Vittoria"
<i>Royal Engi- neers.</i>	E Hud Clarke	B J Hooke	"Nivelle"
Col. G Nicolls	JCV Molesworth	E S Bayly	"Nive"
2d Capts	Wm R Lucas	Hen Deedes	"Orthes"
Chas Rivers	Wm Chearnley	lieuts	"Toulouse"
1st Lieuts	Ira S Whitty	G R Thompson	"Peninsula"
C MacKenzie	Ensigns	Dep Pm	"Waterloo."
S H Wentworth	Ralph Cheney	Jno Elgee	Colonel
2d Lieuts	Edw Orme	W Lax	Sir G T Walker,
W H Ford	H W Roper	NR Brown	GCB. lt gen
St Geo L Lyster	Walter Lay	E Broderick	Lt Col
Scarlet—facings	C T Baldwin	Jno Reed	J. Fergusson, col majors
blue velvet—	Walter Ogilvy	Jno Auldjo	*J Cross
lace, gold.	Hen Lomax	C T Vandeleur	*G F B St John
	Pay	St Geo Cromie	Captains
	Adj. I S Whitty	W O Warren	S D Pritchard
	Q M * S Brodribb	Arthur Horne	*G Gawler
<i>8th (or the King's Regt.)</i>	Sar JHC Cardiff	T W Newcomen	
The White Horse	A. J K Adams	Wm Colt	
"Egypt"	P Fraser	Ensigns	
"Martinique"	Facings blue	R H Webster	
	Lace Gold		

Howe Adj
Harford
Glubb
Arnold
S Eustace
dyce
Byron
Led.ingham
W Howe,

Tho Howe
R Ranken
Cha Bell
drick MD
ga yellow ;
ilver
s, Macdon-
Co
Cane & C
O
(Oxford-
hire)
nfantry.
doostan"
imiera"
runna"
usaco"
tes d'O-
or"
ad Rodri-
Badajoz"
manca"
ttoria"
velle"
Nive"
thes"
hthouse"
insula"
erloo."
onel
Walker,
lt gen
Col
son, col
jors

St John-
tains
chard
er

Wm Blois	EH F Pockling	Lt Col	P F de Meuron
W S Moorson	ton	Fullerton, C	Robt Bush
R D King	R Twopenny	majors	J W A Wray
Geo Montagu	Geo Hall	Hen White Lt col	R B Warren
Lord C J Russell	Hon Jno Forbes	A Cairner's	D Kinsley
R K Hill	T N Kemp	Captains	Ensigns
Wm Considine	G Murray	Wm Hulme, m.	Jas Clyde
Wm O Gunning	B Palmer	Rich Gethin	R S Murray
Lieuts	* Pay mr J Win-	J W S Waller	E Hathaway
J Bentham, deppm	terbottom	E E Hill m	E W Blencowe
Walter Butler	Adj G C Swan, lt	Wm L Carey	Geo Anderson
Rich French	Q mr J Morgan	Wm Ouseley	M R Campbell
C F Norton	* Sg J B Gibson	C B Cumberland	Jno Lee
G C Swan	As sg R Tut-	Peter Cheape	Pmr B Scott capt
W J M Hughes	hill, M D	B H Cumberland	Adj E Sutherland
S R Stratfield	Facings buff—	H F Kennedy	Qm J Murchison
C W Forester	Lace Silver	Lieuts	Surg J Shorland
J A Vigors	Agents	L F Jones	As sg A McAn-
W Amh Hale	Greenwood & Co	Wm Kidman	drew
Hen S Davis		E Sutherland, ad	A W Murray
Ensigns		A Robertson, d p	Facings yellow ;
F G Bull	93d REGT,	P S Nugent	Lace silver.
J Atty	Colonel	A McKenzie	agents
Hon R LePoe	Sir Jos Fuller, G	Jos Telford	Greenwood & Co
Trench	CH lt gen	Thos Abbot	

This mark (*) prefixed to the names of Officers denote their having been at Waterloo. The words subscribed to the titles of Regiments as " Peninsula," " Waterloo," &c. denote the honorary distinctions permitted to be borne on their colours and appointments, in commemoration of their services.

MILITIA OF NOVA-SCOTIA.

His Excellency, Lieut General Sir PEREGRINE MAITLAND, K C B. Commander in Chief.
Lieutenant Colonels, Hon T N Jeffery and Sir Rupert D George, Et Aides de Camp to the Commander in Chief.
Lieut Cols. Wm G Cochran, R R Loring and W Marshall Insp. Field Officers. Lt Col A V S Forbes, Brigade Maj. to the Western Dis.
Adj General, Lieut Col. John McColla. Qr Master General, Major Edward Wallace. Judge Advocate Gen, Hon S B Rolie.

Artillery.

1st Volunteer Company—Lt Col Richard Tremain. Captain, James Cogswell. 1st Lieuts. Joshua Lee and Richard Tremain jr.
2d Company—Captain, James Tremain. 1st Lieut. Wm Foster.
2d Lieut. Alex Farquharson, Surgeon, Matthias Hoffman,
1st Halifax Regiment. John Slayter, adj. W. A. Flieger Edw Binney
Jas Black 1st Lieuts Adj J Slayter, cpt
Lieut Col. Jas G Boggs A B Richardson Qr mr G T Phillis
G N Russell Wm Donaldson F Stevens Surg A Wallace
Majors Thos Lydiard Robt Romans Ast do W Grigor
A Richardson Chas De Wolfe Saml Lydiard
James McNab Thos Adams Thos Kinnear
Captains Law O' C. Doyle Wm Emerson
Wm Pryor, jr S Binney John Robertson
Hon Sam Cunard

majors
 Chas J Hill
 W M Deblois
 Captains
 J A Barry, adj
 G B Creighton
 A G Fraser
 M Tobin, jr
 Thos Tobin
 Jno Cunard
 M Tobin, 2d
 J H Clark
 John E Starr
 J S Clarke
 1st Lieuts.
 H Pryor
 H Mignowitz
 A M Della Torre
 Edw Cunard jr
 Adj J. A Barry,
 Qr mr. J Dupuy
 Surg. W Balmon
 3d Halifax Re-
 giment.
 Lieut Col
 J Leander Starr
 majors
 John E Fairbanks
 H A Gladwin
 Edw Canard
 Captains
 H Y Mott
 S W Albro
 A Taylor
 P Ogilvie
 Thos R Grassie,
 A Dunbrack
 Edw H Low
 Jas Allen
 J M Chamberlain
 E G W Green-
 wood, adj
 Daniel Starr
 Jno Watson
 W J Starr
 G R Grassie
 John Harvie
 1st Lieuts
 W Hall
 G G. awson
 C Marks
 S Breedin
 Wm Albro
 R D Clarke

John Leslie
 W Anderson
 J Brown
 A Kent
 R A Logan
 G P VanBuskirk
 2d Lieuts
 J Kennedy
 W Guild
 John Linsie
 Alex Taylor jr
 E Duckett jr, pm
 J Y Patrick
 T Kenney
 H Leslie
 J H DeWolf
 J A Moren
 Jno Gammon
 Martin Nisforth
 J T Bishop
 J E Miller
 How. Blades
 Hen Gorham
 Chas Brereton
 Wm Muir
 Rich G White
 Adj E G W Green-
 wood, capt
 Pmr E Duckett jr
 QMr C H Belcher
 Surg. S Head, MD
 As R L Gray
 4th Halifax Re-
 giment.
 Lt Col J Albro
 Majors
 W A Black
 Edw Pryor 3rd
 Captains
 F Dauphiney
 John Parker
 Thos Pyke
 D Fletcher
 Jas Hearn
 Peter Power
 W Donaldson
 Jno Dauphiney
 Azor Stevens
 H Yeomans, jr
 A Scott adjt
 1st Lieuts
 Edw Allison
 A Keith
 Benj E Black

Nepean Clarke
 P J Holland
 W B Hamilton
 Arch McDonald
 Bal Brehm
 2d Lieuts
 Chas Gray
 Alex McDonald
 Jno Martin
 J Buchanan
 Pat Purcell
 E Ryan
 James Saul
 Angus Fraser
 C Hamilton
 G Dauphiney
 W Dowling
 Jno Sneden
 Jno Adams
 Hen Creighton
 Wm Vickers
 Geo Leppart
 Geo Grono
 Adj A Scott
 Cap
 Qr mr T Hoster-
 man
 Surg J Stirling
 Colchester Re-
 giments.
 1st BATT.
 Lt Col. Jas Kent
 Majors
 Alex Archibald
 Jas D Blair
 Captains
 Jas Phillips
 Jos Fulton
 John Gammill
 Jas Yuill
 W C Eaton, adj
 Geo Corbett
 Wm Blair,
 1st Lieuts
 Wm Phillips
 Jas Rutherford
 S Archibald
 Wm Logan
 Jas Dunlap
 Andw Yuill
 F Parker
 Jno L Fisher
 M T Smith
 2d Lieuts.

Wm McCulley
 John Gammill, 2d
 Jas Pollock
 Geo S Flemming
 Jno Tupper
 Jno Johnston
 David Page
 Geo S Rutherford
 Adj W C Eaton
 capt
 Sg W B Lynds
 QM Alex Knight
 2d BATT.
 Lt Col R Dickson
 majors
 Thos I Brown
 A Campbell
 Jas Flemming
 Captains
 Jas Dickson
 J Wier
 John Crow
 R McLelland
 R Spencer
 A Thompson
 E D Dickson, adj
 Robt B Dickson
 Jas D Baird
 Alex Vance
 1st Lieuts
 Rufus McNutt
 D Dewer
 Wm Baxter
 Alex Conkey
 Thos Corbett
 J Urquhart
 E Munro
 Jno McGrath
 Wm Vance
 Jac. Marsh
 Geo Ross
 J Archibald
 Jas Wilson
 Robt Spencer
 2d Lieuts
 D V Crow
 Alex Blair
 Sam Waugh
 M Waugh
 Edw Langille
 L V Crow
 Chas D M Curdy
 Jno McKay
 J M L Dickson
 Robt Corbet

Jas M Spencer
Wm Fletcher
Robt Murray
H M Laughlan
Pat Marsh
Wm Cuttee
Jno Blair 3d
Steph Linton
Jas Barnhill
Adj E DeW Dick-
son, Capt
Q: mr. W Cutten
Surg Chas Head
**Pictou Regi-
ments.**
1st BATT.
Lt Col Geo Smith
major
Robt McKay
Captains
Geo McDonald
John Patterson
Wm Corbett
John Gordon
Wm Mortimer
D. Cameron
Abn Patterson
Anthony Smith
Geo Campbell
Saml Archibald
Mich McCulloch
1st Lieuts
Wm Clark
R McDonald
David Davison
Jas Dawson
Mat Langille
Jno Taylor
Chas Patterson
Don Fraser
Colin McKenzie
2d Lieuts
H Douglass
F McDonald
Jas Crichton
David Ross
Thos M'Cube
Jas Perin
Geo Grant
Jas McGill
Jno Graham
Jns Robertson
Jno Campbell
Mat Patterson
Wm Campbell

Jno Lorrain
Thos Taylor
Jno McLeod
adj Geo M'Don-
ald, capt
Q mr. H Hatton
Sg
2d BATT.
Lt Col
J Carmichael
majors
D Murray
John Olding
Captains
T McPherson
Simon McKay
D McDonald
Thos Munro.
Simon Fraser
D Mc Lennan
Don McDonald
John Smith
A McDonald
Rod'k McKay
John Finlayson
1st Lieuts
W Jas Corbett
Hugh Fraser
Alex Fraser
Don Munro
Alex McDonald
Don McDonald
Jacob Olding
Don Robertson
Wm Chisholm
Wm Fraser
Robt Walker
2d Lieuts
Paul Foster
Mur McKenzie
Wm Fraser
John Fraser
Peter Ross
Hec McLean.
Pet Grant
Jas Fraser
Ang McDonald
Thos Copeland
Don McDougall
Don Sutherland
Alex Grant
Adj J Holmes.
Q mr A Fraser
Sg D Finlayson

County of Syd-
ney Regiments.
1st BATT.
Lt col Jno Munro
major
Jno G Peabody
Captains.
JD Cunningham
Ang McDonald
H McLennan
Wm Hierlihy
James Wilkie
A D Harrington
1st Lieuts
Alex McDonald
Allan McDonald
Aug A Ogden
GA Forrestall
Jas Thompson
Geo. Brennan
Wm J Corbett
2d Lieuts
Alex Campbell
Zeph Williams
Alex Thomson
Colin Chisholm
Jas Ross
Hugh McDonald
Jno Corbett
Arch McDonald
Adj A M Chis-
holm
Q M R J For-
restall
Sg A McDonald
2d BATT.
Lt Col R M Cutler
major
Isaac Wylde
Captains
J K McKeen
Wm Heffernan
D Atwater
Jno Soutir
John Grant
C Archibald
Jas Lyle
Edw Morris
Wm McKeen
Robt Boles
Jno Archibald
Wm Lynch
1st Lieuts
Jas Tory, jr
Wm Bedford

Jos Maxwell
M Taylor
Hugh McDonald
Wm Sinclair
Thos Peart
Wm Strogel
Alex Martin
Jno Hudson
2d Lieuts.
Wm Hart
Jno Newton, jr
Jno Stewart
Spin Whitman
Jno Kenealy
Chas Bromley
E J Cunningham
Wm Simpson jr
Wm Hadley
Edw Frenchville
Jas Marshall
Hall Foster
Iry Pride
Aaron McKinly
Da Martin
Jno Jamison
Jno Mitchell
Adj Robt Boles
Qr mr Jno Jost
Sg W Cantrill
3rd BATT.
Lt Col
Robt N Henry
Major
Joseph Symonds
Capt
Jas Terroir
Jas Bandall
Jno McMillan
Elisha M Randolt
Don McDonald
Don McPhee
Allan Cameron
1st Lts
Luke Terroir
Hugh McDonald
Wm Johnston
Don McDonald
Don McDonald
Alex Cameron
Don McKenzie
2nd Lts
Jno Fraser
Cel Dourout
Rich Connors
Angus Kennedy
Penj Hennig

Hugh McGregor	W H Shey	1st Lieut.	Thos Welton
Adj Hugh Mc-		J Woodworth	Judah Wells
Donald	majors	John Sterling	J C Magee
<i>Cumberland</i>	T Cochran	Alex Fesgu on	Wm Pearce
<i>Regiment.</i>	N Jenkins	Wm Knowles	D Burbidge
Lt Col	Dahl Wier	Hy Blois	Saml Sharpe
Tlos Roach	Captains.	J Blackburn	John Prescott
major	John Eider	D Ettingen	J H Allison
R McG Dickey	E Sandford	Jro Densmore	Jer Tupper
Captains	Dan Lockhart	Wm Withrow	E Burbidge
Wm Chapman	Wm S Church	2d Lieuts.	2d Lieuts.
T Chapman, adj	John Manning	Sam Meek	Wm Starr
Geo King	R A McHaffey	Jno McPhee	Ben Donaldson
Henry Purdy	F Parker	Evan McPhee	F B Campbell
H Purdy 2d	J Songster, adj	Arch Cox	Hen Gisher jr
Dan King	Elias Payzant	Caleb Burges	J F Hutchinson
Jas Roberts	J M Smith	Wm Withrow 2d	Rich Starr
Jos Black	Ich Dimmock	Hy Millar	Wm Miller, jr
Tlos Logan	Its Lieuts.	Jno McDougall	Dan Huntley
Wm Fowler	M Wright	Jas C Nelson	Saml Lowden
1st Lieuts	D. Mosher	Mich Terhune	Dan C Moore
Josh Hunter	Jacob Anthony	Robt Wilton	Adj A Beckwith
Gains Lewis	Jno Cochran	Adj J Withrow	Qm G Lockwood
G Lawrence	C Curran	Capt	Sg W Baxter
Saml Purdy	T McLatchy	Q mr M Casey	2d BATT.
R Cornio	R McHaffey	Sg F C Pike	Lt Col Denison
W M Nab	2d Lieuts		major, J N Crane
B Chapman	F Cochran	<i>King's County</i>	Captains
Jos Morse	Jos Northrup	<i>Regiments.</i>	Elias Brown
Brown Pipes	G Brightman	1st BATT.	Ben Bishop
Anth Taylor	Jas Sterling	Lt Col	Geo Forsyth
B Stevens	A Harvie	Henry Gisher	Jno Fuller
Amos Eaton	P Waller	majors	E Forsyth
Jno Rushton	Tlos Alliance	W C Moore	J Johnston
H Chapman,	S C Palmer	Jno Wells	D Rathburne
2d Lieuts	H Goude	Captains	1st Lieuts.
Josh Redce	E Corver	D Cogswell	Randall
Jro Dothen	Adj J Songster	Jro Moron	S Avery, jun
Ths Chapman, 2d	Qm T O'Brien	Jos Crane	J H Rand
Ezra Bent	Sg Jos Wiley	A Beckwith, ad	M Benjamin
Jas Coles	2d BATT.	T Barnaby	Elijah Fowler
Tim Weatherby	Lt Col Rich Smith	Jona Crane	2d Lieuts.
J G Purdy	major	J H Gisher	S Parmlin jr
Dan Pugsley	Benj Smith	N Woodworth	D Hamilton
Gilbert Seaman	Captains.	J Newcomb	Jas Bragg
Martin Bent jr	Thos Ellis	LV Buskirk	Geo Terry
Thos Smith	Mich Casey	J H Chipman	A Bishop
Adj T Chapman	J Withrow, adj	Saml Chipman	Dan S Deunton
capt	C Putnam	1st Lieuts.	Jas Woodman
Surg E Purdy	Alex McPhee	EM Terry	Eliphilet Fuller
	Don Grant	J T Allison	Adj J M Terry
<i>County Hunts</i>	Jas Densmore	John Belcher	Q mr J D Harris
<i>Regiments.</i>	John Grant	Elias Calkin	Sg W Webster
1st BATT.	Edw Murphey	W C Campbell	<i>Parrsborough</i>
Lt. Col.	Jno Withrow	O Cogswell	<i>Corps.</i>

Lt Col
Jas Ratchford
 Captains.
 Jesse Lewis
 Oman Lewis
 A Thompson
 Alex Fullerton
 W E Crane
CERatchford, adj
 1st Lieuts.
 B Fullerton
 Eben Kerr
 W Spratt
 Wm Marsh,
 Robt Dewis
 2d Lieuts.
 Edw Morrison
 John Petis
 J Fulmore jr, q m
 Danl Dickenson
 Jos Cox
 Ad CERatchford
 capt
 Q mr J Fulmore jr
 Sg A Gissner

East Annapolis
County Regts.
 1st BATT.
 Lt Col T Ritchie
 major
 Timothy Ruggles
 Captains.
 E Thorne
 Wm Davis
 G Robinson
 S Cowling
 E Whitman
 Abner Troop
 Wm Saunders
 Step Thorne
 Robt Spurr
 Sam McCormack
 1st Lieuts.
 Jacob Bogart
 Wm Harris
 S Parker
 S Chipman
 Hen Gates
 A Fowler
 Edw Hinkle
 Isaac Ditmars
 Hen Gisser
 2d Lieuts.
 Jon Woodberry

J H Ditmars
 Weston Hall
 Geo Barteux
 Jas LeCain
 Jno Hicks
 Jno Kennedy
 Constant Morse
 Jas Wade
 Adj Geo Robert-
 son, capt
 Qmr Jas Gray
 2d BATT.
 Lt. Col.
 B R Beardesley
 majors
 Eze'l Cleaveland
 Jno Delany
 Captains.
 C Shafner
 Foster Bolsor
 E Phinney
 Arch Hicks
 H Parker
 J Armstrong
 Robt Stone, adj
 Seth Leonard
 Chris Banks
 1st Lieuts.
 Jno Dodge
 Zeb Phinney
 Jno Feritzs
 Jas Gates
 Wm Banks
 Geo Fitch
 C Marshall
 2d Lieuts.
 Jno Smith
 Jas Hall
 H McGae
 Jno Banks
 Jno Shaffner
 Sam Langley
 Jas Charlton
 Geo Brown
 Phin Bent
 Saml B Chipman
 Felx Me Neal
 Alfred Parker
 Saml Starritt
 Minand Parker
 Sam, Warie jr
 Pet Delancey
 Adj R Stone, cap

Qmr Jno Ross
 Sg J V Burin

West Annapolis
Co's Regts.
 1st BATT.
 Lt Col
 W F Bonnell
 major Wm Muir
 Captains
 J Timpany
 T H Ruggles
 D Rutherford
 Edw Morgan
 J E Morton, adj
 B McCannell
 1st Lieuts
 Chas Budd
 Hen Stewart
 Chas C Moody
 Israel L Bent
 Jos Bancroft
 2d Lieuts
 Alpheus Jones
 M R Hutchinson
 Jones Morehouse
 JHEitzRandolph
 R' Journeay
 Isaac Morehouse
 Jonas Keen
 Israel Outhouse
 Jno Haynes
 Holland E Pay-
 son
 Adj J E Morton
 Qmr W Taylor
 Sg J W Light-
 foot
 2d BATT.
 Lt Col S Doucett
 major
 Saml Campbell
 Captains
 H Barr
 Saml White
 Jos Terrio
 F A Robichau
 Josiah Porter
 Jno Holden
 1st Lieuts
 Jos White
 Jos Commo
 Geo Taylor
 J Parry

Jno Terrio
 Fras Bournuf
 2d Lieuts
 Benj White
 Caprain Martin
 B Robichau
 Sel. Robichau
 Ciriac Belivo
 Benonie White
 Adj H Barr,
 Q, mr H Barr, jr

Shelburne Re-
giments.
 1st BATT.
 Lt Col J V Buskirk
 Captains
 I G Enslow, adj
 Benj Perry
 Wm Holden
 Jas Barclay
 P Spearwater
 Jno Lock
 Wm Muir
 1st Lieuts
 Saml Lock
 Wm McMillan
 Thos Johnston
 Eben Martin
 Wm Stulker
 2d Lieuts.
 Rich King
 D Matthews
 Jas Griffin
 Geo. Boole
 Josh Snow
 Gilbert Kennan
 A Vernon
 Adj I G Enslow,
 capt
 Q, mr J Tottle
 2d BATT.
 Lt Col
 Abraham Lent
 Major
 J McKinnon
 Captains
 D V Norden, adjt
 Jas Hatfield
 W Whitehouse
 J J D'Estremont
 J Servan

M Amero
D Bodreau
Theo K Frost
1st Lieuts
John Williams
Jno Hatfield
S D'Entremont
P D'Entremont
Ceil Porter
Sil Porter
M Jeffery
Jno Rider
2d Lieuts
C Blanvelt
G V Baskirk
W Larkin
J B Bodreau
Jos J Porter
T Nickerson
Chas McLarrin
R D'Entremont
Adj D V Norden
capt
Q mr Jas Leat

3d BATT.

Lt Col Jno Bingay
Major
G B Van Norden
Captains
Jas Dane
D Patten
Israel Kelly
John Cook
Benj Lewis
M Killum
A Huntington
Geo Bingay adj
Thos B Tooker
1st Lieuts
Jos Shaw
Jno Pattha
Z Churchill
Jas Allen
R Robins
G Bond
E W Moody
M Shaw
A Raymond
2d Lieuts
J Carin
J Hilton
D Gowen
J Crosby

C Lewis
Stayley Brown
Jos Stoneman
H Chipman
H Huntingdon
Edw Huestis
J Ultey
Ad G Bingay, ca
Q mr J Tooker
Sg H G Fariah
AS Jos E Bon
4th BATT.
Lt Col
W B Sargeant
Captains
J P Doane
Jas Smith
J Sargeant, adj
J Osborne
K Reynolds
1st Lieuts
S Kenny
Jethro Coville
E Knowles
Josh Atwood
Jno Lyle
2d Lieuts
Thos Coffin
Jas Kenny
J C Crowell
Wm Patterson
Adj Sargeant, cp
Q mr S O Doan

Queen's Count
Regiment.

Lt Col
Jos Freeman
majors
J R Dewolf
J Whitman
Captains
J Roberts
Jon Dewolf
Wm B Taylor
John Campbell
W Freeman, ad
Jas Morton
Mat Parke
1st Lieuts
F Tupper
T Freeman
N Freeman

Vm Irwin
L Darrov
ohn McViker
Sam Freeman
Thos P Calkin
Wm McGill
Freeman
S Freeman
Stephen Mack
Geo Pearson
Jno Fraser
2d Lieuts
ohn Cobb
os Ford
eo Freeman, sen
no McDonald
V McDonald
eo Freeman jr
E Knowles
o H Freeman
as A Taylor
no Kempson
Robt Rolerts
Adj W Freeman,
capt
J mr John H De-
waal
Sg A Webster
1st do D Grieve

County Lunen-
burg Regts.

1st BATT.
Lt Col JC Rudo
Majors
Vm Rudolf
Ien Oxner
Captains
J Oxner
I Kaulback
Jno Anderson
J J Rudolf
M Rudolf
P W James
Geo Anderson
Geo Creighton
F Oxner
Fras Rudolf
Wm Drew
Thos Boehner
1st Lieuts
Fras Boehner

Mat Ernst
Nich Oxner
Jno Harley
Philip Mason
Geo Fancy
Jno Fredetick
2d Lieuts
P Kaulback
Chas J Rudolf
Chas Bolman
Jno Ernst
Chas Perrette
Jos Miller
Garre Miller
Wm Mosher
Jas Dauphine
Adj GT Solomon
J mr D S Grout
Sg G Jacobs

2d BATT.

Lt. Col.
Jno Heckman
Majors.
John Evans
J Creighton
Jas S Thomson
Captains.
Geo Burgoyne
Hen Ernst, adj
G Ernst
John Hiltz
Jas Walker
P Strum
Jno Hunt
Geo Langille
Thos Zwicker
Alex Johnston
Jno G Thomon
Jno Zwicker
Geo Ernst
Geo Zwicker
Robt Moorey
G Metzler
Jno Crandle
1st Lieuts
John Nans
J B Comingo, qm
Leo Hiorthi
Jos Gates
Chas Evans
Jos Thomson
A Zwicker

F. Hiltz
 Jos Lordley
 Leon Gildert
 M Publicover
 Jos Dimmock
 Adam Lantz
 Wm Light
 Edw Zwicker
 Fred Ernst
 Jno Kedy
 Dan Dimmock
 Wm Heckman
 Adj H Ernst, cp
 Qm J B Comings
 Sg Jno Harley

CAPE BRETON.

1st Battalion.

1st Regt.

Lt Col

Chas E Leonard

Major

Wm H Crawley

Captains

Saml Plant

Sam Rigby, adj

Rich Brown

Wm R Bell

Chas M Dodd

Edm M Dodd

C Barrington

John Ferris

1st Lieuts

Luke Hall

Lewis Brown

Geo Rigby

Josh Weeks

Wm Gamuill

Chas Dumaresq

Arnold Holmes

Jno Hill

Peter Moore

Syd Barrington

2d Lt

Wm Cook

Rich Gibbons, jr

RCampbell

H Ross

J Ross

Edw Brown

Jno De'pard

Neil McKay

J French

J Woods
 A Martell
 A Grant
 adj S Rigby, capt
 Qr mr John Ball
 Sg Wm Haire

2d Regt
 Lt Col

Clement Hubert
 major J Janvrin
 captains

M Doyle

T E Chandler, adj

Peter de Carteret

John Ferrier

John Fuller

E F Le Montais

Wm Crichton

Thos Le Noir

John R Smith

Lieuts

Desirez Boudroit

Jno Ballaine

A Brymer

J F Wilson

B G G Potts

Victor Terriot

Isaac Paon

Thos du Bois

Sim Babin

Benj Terriot

Chas Wood

Chas Terriot

Hen Martell

Peter Terriot

Peter Forest

adjt Thomas E

Chandler, capt

Q mr Jno Walsh

Sg And. Madde

3d Regt.

Lt Col

Wm McKeen

captains

J L Tremain, adj

Wm Watts

Jno Murray

Jno Campbell

Alex McDonald

Jno McKeen

H McMillan

Na'h Clough

Law O'Byrne
 Robt Patterson
 Robt Gray
 Lts

Alex McMuir

C McMuir

Phill.e Brocque

H McDonald

T McDonald

A Chisholm

A McDonald

D Grouchy

Jas McDonald

Jas Hawley

Alex Beaton

Jas Doyle

A McDonald

Dun Campbell

Don Campbell

D Cameron

A McIntyre

Jno McKay

Adj J L Tre-

main, capt

2d Batt

1st Regt

major

Jas Duffus

captains

Jon Jones

GMcKay

Wm Duffus

Don McLeod

J McKay

Don Logan

Wm Jones

Jno Munro

1st lieuts

P Hume

Alex McKinnon

A Munro

Wm Jones

Kenneth McLeod

Don Carmichael

J Brown, adj

Jno McNeill

2d Lts

Samuel Peters

Jro Fraser

Jas Sparling

Robt Sutherland

Alex Anderson
 Jno Spirling
 H Ingraham
 Jno McLeod 1st
 Jno McLeod, 2d
 Jas. Frazer
 Flos Joice
 adj J Brown, lt

2d Reg
 Lt col

L Kavanagh,

major

Chas M McNab

capt

Jno Cameron

Dougald McNab

Dani Pellier, adj

Jno B McNeill

Jno Walsh

Thos Simons

M Kavanagh

And Le Brocque

Robt McNab

lieuts

Justin Muntour-

gette

Jno Matheson

Alex Murchison

F McPherson

N McMullen

Don Campbell

Jno McDougall

Jno Smith

J Morri on

Jno Proctor

Ad McPherson

adj D Pellier, apc

3d Regt

major

Hen Taylor

captains

N McLellan

A McLellan

A McDonald

A McDonald

Jno Campbell

R McKinnon

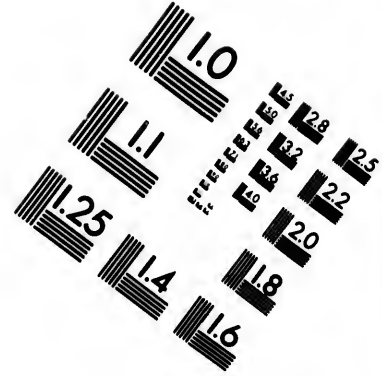
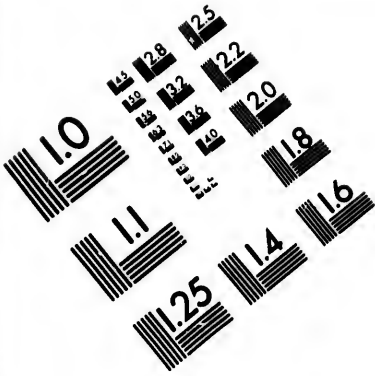
lieuts

Jno Ross

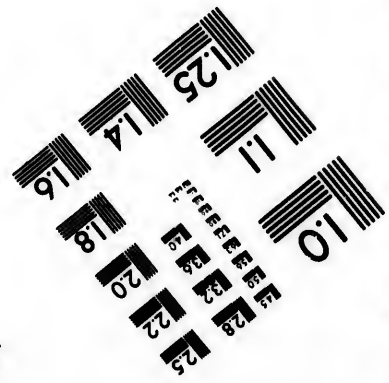
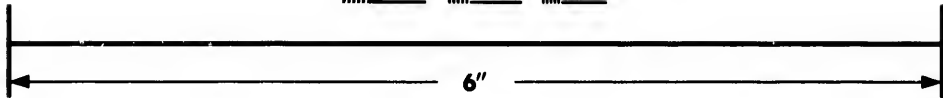
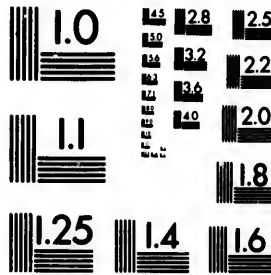
Jno McKinnon

Jno McFarling





**IMAGE EVALUATION
TEST TARGET (MT-3)**



**Photographic
Sciences
Corporation**

23 WEST MAIN STREET
WEBSTER, N.Y. 14580
(716) 872-4503

25
22

51

Jas McLellan	A Mc Lellan	Major	Alex Campbell
A Smith	A McInnis	Wm Gammill	Thos Pembroke
H O Quin	Jno Mc Lellan	Capt	Neil McNeil
Chas Boudroit	R McDonald	C McAlpine	Don McDonald
Dun McRae	Adj DCampbell	Jno Scott	Gibbs Gisner adj
M McDonald	3d Batt 1st Regt	1st Lts	Ang McGilvery
Wm Campbell	Lt Col	Jno Martin	Jno McEacran
	P H Clarke	Dun Currie	Adj G Gisner, lt

THE NAVY.

E G Colpoys, Vice Admiral of the Red, Commander in Chief on the West India, Halifax and Newfoundland Stations, &c &c.
Secy Edw Lawes, Esq

WINCHESTER 52, Vice Admiral E G Colpoys, Capt Charles J Austen; Com Hon Geo J Cavendish; Sup Com H W Bayfield; Lts JT Warren, Wm H Jervis, Hon A W Monckton; Sup P. E Collins, Wm Louis, F L; Capt Mar. — — — — ; 2d Lt Jno Urquhart Master Jas Napier; Surg Jno Campbell; Sup Matt Burnside; Chaplain, Rev Jno M Edwards. Purser, Thos Gliddon

BLANCH, 46, Capt Arthur Farquhar, CB. K H and Kt of the Sword of Sweden.—Com Wm Burnet; Lts H Stroud, Jno G D'Urban, S H Ussher. Purser J W Nicholls

CHAMPION, 18, Com F V. Cotton—Lts H Smith and Jno S Foreman. Purser W Hamilton

BLOSSOM, 16, Com. Rich Owen.—Lts Wm Wilson & Bird Alen Purser Jno C Harris

NORTH STAR, 28, Capt Rt Hon. Lord W Paget, Lts Jno Wheatly, Chas Bolton, and C. H M. Buckle. Purser R M Read.

RANGER, 28, Capt. Wm Walpole; Lts. T.M. Currie, Bdm H Seppings and D B. Bedford. Purser, Wm Reeve

ROSE, 18, Com E W Pilkington—Lts Arthur Wakefield and F T Brown. Purser, Geo Starr.

SHANNON, 46, Capt Benj Clement—Lts, Thos Archer, H B. Young and Thos Henderson. Purser, Jas Jones

SLANEY, 20 Com Cha Parker—Lts Arch Reed and Gow Lowe

SPARROWHAWK, 18, Com Thos Gill—Lts H A Griffith and W J Collins. Purser Jno Beal.

COLUMBINE 18, Com Jas W Gabriel—Lts W S Blount and Geo St V King. Purser, Jno Tindall.

GRASSHOPPER, 18, Com J E Erskine—Lts G S Hand and G J Hertzell. Purser, Robt Barron.

HARPY, 10, Com J P D Larcom—Lts Jno Gutzmer and Walter Taylor. Purser J W Nicholls.

HYACINTH, 18 Com Rob M Jackson—Lt G F Dawson

ICARUS, 10, Com Dawson Mayne Lts Chas Bagot and Jas Hogg

MANLY, 12, Lt Com ———— Master Edw F Chaffers

MERSEY, 26, Capt G W C Courtenay—Lts Jno Garrett, Geo Davies and Chas H Beddoes Purser, Wm Crane

FALCON 10. Com H.G. Colpoys, Lts Wm Croke and Thos Hope

VICTOR, 18, Com Rich Keant, Lts Andw Smith and Jno Jas Allen

