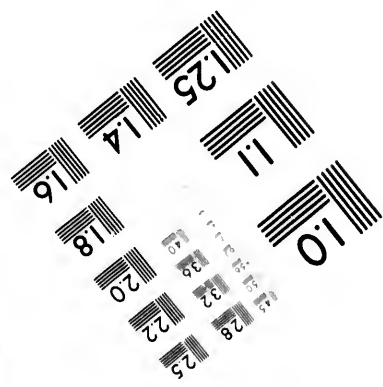
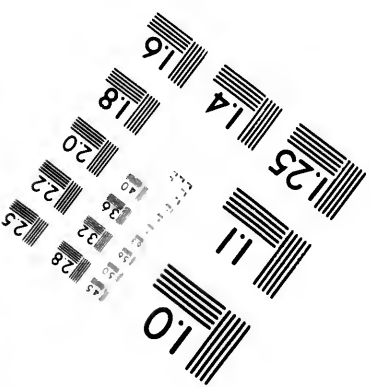
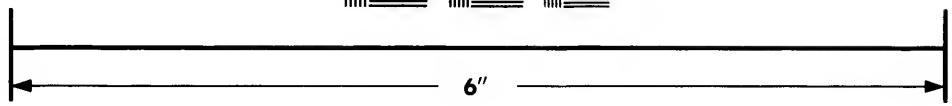
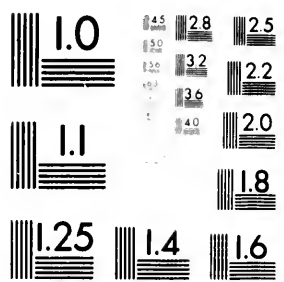


IMAGE EVALUATION TEST TARGET (MT-3)



Photographic
Sciences
Corporation

23 WEST MAIN STREET
WEBSTER, N.Y. 14580
(716) 872-4503

28
32
25
22
20

**CIHM/ICMH
Microfiche
Series.**

**CIHM/ICMH
Collection de
microfiches.**

01



Canadian Institute for Historical Microreproductions

Institut canadien de microreproductions historiques

1980

Technical and Bibliographic Notes/Notes techniques et bibliographiques

The Institute has attempted to obtain the best original copy available for filming. Features of this copy which may be bibliographically unique, which may alter any of the images in the reproduction, or which may significantly change the usual method of filming, are checked below.

L'Institut a microfilmé le meilleur exemplaire qu'il lui a été possible de se procurer. Les détails de cet exemplaire qui sont peut-être uniques du point de vue bibliographique, qui peuvent modifier une image reproduite, ou qui peuvent exiger une modification dans la méthode normale de filmage sont indiqués ci-dessous.

- Coloured covers/
Couverture de couleur
- Covers damaged/
Couverture endommagée
- Covers restored and/or laminated/
Couverture restaurée et/ou pelliculée
- Cover title missing/
Le titre de couverture manque
- Coloured maps/
Cartes géographiques en couleur
- Coloured ink (i.e. other than blue or black)/
Encre de couleur (i.e. autre que bleue ou noire)
- Coloured plates and/or illustrations/
Planches et/ou illustrations en couleur
- Bound with other material/
Relié avec d'autres documents
- Tight binding may cause shadows or distortion along interior margin/
La reliure serrée peut causer de l'ombre ou de la distorsion le long de la marge intérieure
- Blank leaves added during restoration may appear within the text. Whenever possible, these have been omitted from filming/
Il se peut que certaines pages blanches ajoutées lors d'une restauration apparaissent dans le texte, mais, lorsque cela était possible, ces pages n'ont pas été filmées.
- Additional comments:/
Commentaires supplémentaires:

- Coloured pages/
Pages de couleur
- Pages damaged/
Pages endommagées
- Pages restored and/or laminated/
Pages restaurées et/ou pelliculées
- Pages discoloured, stained or foxed/
Pages décolorées, tachetées ou piquées
- Pages detached/
Pages détachées
- Showthrough/
Transparence
- Quality of print varies/
Qualité inégale de l'impression
- Includes supplementary material/
Comprend du matériel supplémentaire
- Only edition available/
Seule édition disponible
- Pages wholly or partially obscured by errata slips, tissues, etc., have been refilmed to ensure the best possible image/
Les pages totalement ou partiellement obscurcies par un feuillet d'errata, une pelure, etc., ont été filmées à nouveau de façon à obtenir la meilleure image possible.

This item is filmed at the reduction ratio checked below/
Ce document est filmé au taux de réduction indiqué ci-dessous.

10X	14X	18X	22X	26X	30X
<input type="checkbox"/>	<input type="checkbox"/>	<input type="checkbox"/>	<input type="checkbox"/>	<input checked="" type="checkbox"/>	<input type="checkbox"/>
12X	16X	20X	24X	28X	32X

The copy filmed here has been reproduced thanks to the generosity of:

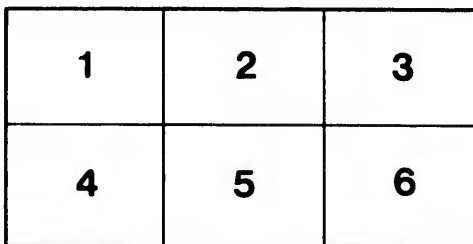
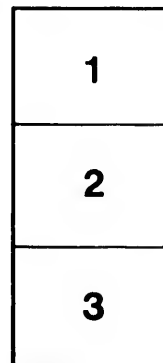
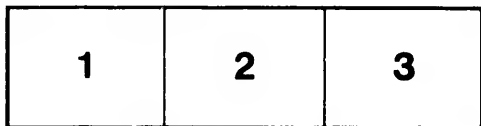
Douglas Library
Queen's University

The images appearing here are the best quality possible considering the condition and legibility of the original copy and in keeping with the filming contract specifications.

Original copies in printed paper covers are filmed beginning with the front cover and ending on the last page with a printed or illustrated impression, or the back cover when appropriate. All other original copies are filmed beginning on the first page with a printed or illustrated impression, and ending on the last page with a printed or illustrated impression.

The last recorded frame on each microfiche shall contain the symbol → (meaning "CONTINUED"), or the symbol ▼ (meaning "END"), whichever applies.

Maps, plates, charts, etc., may be filmed at different reduction ratios. Those too large to be entirely included in one exposure are filmed beginning in the upper left hand corner, left to right and top to bottom, as many frames as required. The following diagrams illustrate the method:



L'exemplaire filmé fut reproduit grâce à la générosité de:

Douglas Library
Queen's University

Les images suivantes ont été reproduites avec le plus grand soin, compte tenu de la condition et de la netteté de l'exemplaire filmé, et en conformité avec les conditions du contrat de filmage.

Les exemplaires originaux dont la couverture en papier est imprimée sont filmés en commençant par le premier plat et en terminant soit par la dernière page qui comporte une empreinte d'impression ou d'illustration, soit par le second plat, selon le cas. Tous les autres exemplaires originaux sont filmés en commençant par la première page qui comporte une empreinte d'impression ou d'illustration et en terminant par la dernière page qui comporte une telle empreinte.

Un des symboles suivants apparaîtra sur la dernière image de chaque microfiche, selon le cas: le symbole → signifie "A SUIVRE", le symbole ▼ signifie "FIN".

Les cartes, planches, tableaux, etc., peuvent être filmés à des taux de réduction différents. Lorsque le document est trop grand pour être reproduit en un seul cliché, il est filmé à partir de l'angle supérieur gauche, de gauche à droite, et de haut en bas, en prenant le nombre d'images nécessaire. Les diagrammes suivants illustrent la méthode.

The EDITH and LORNE PIERCE
COLLECTION of CANADIANA



Queen's University at Kingston

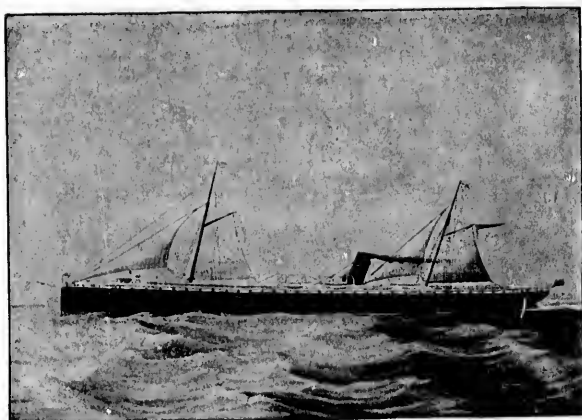


BEAVER FOOT RANGE, ROCKY MOUNTAINS, NEAR LEACHCOIL STATION, B.C.

THE
CANADIAN PACIFIC
RAILWAY.

MONTREAL - - - - - 1887.

LP F5012 1887 C212P



CANADIAN PACIFIC LAKE STEAMER: OWEN SOUND AND PORT ARTHUR.

R/
R/

9

THE CANADIAN PACIFIC RAILWAY.

A RAILWAY from the Atlantic to the Pacific, all the way on British soil, was long the dream of a few in Canada. This dream of the few became, in time, the hope of the many, and on the confederation of the British North American provinces, in 1867, its realization was found to be a political necessity. Then the Government of the new Dominion of Canada set about the building of the Canadian Pacific Railway, a work of such vast proportions that the richest empire of Europe might well have hesitated before entering upon it. s/

Much of the country through which the Railway must be built was unexplored. Towards the east, all about Lake Superior, and beyond to the Red river, was a vast rocky region, where nature in her younger days had run riot, and where deep lakes and mighty rivers in every direction opposed the progress of the engineer. Beyond the Red river for a thousand miles stretched a great plain, known only to the wild Indian and the fur trader; then came the mountains, range after range, in close succession, and all unexplored. Through all this, for a distance of nearly three thousand miles, the railway surveys had first to be made. These consumed much time and money; people became impatient and found fault and doubted. There were differences of opinion, and these differences became questions of domestic politics dividing parties, and it was not until 1875, that the work of construction commenced in earnest. t/

But the machinery of government is ill adapted, at best, to the carrying on of such an enterprise, and in this case it was blocked or retarded by political jealousies and party strife. Governments changed and delays occurred, until finally, in 1880, it was decided almost by common consent to surrender the work to a private company. >/

The explorations and surveys for the railway had made known the character of the country it was to traverse. In the wilderness east, north and west of Lake Superior, forests of pine and other timber, and mineral deposits of incalculable value, were found, and millions of acres of agricultural land as well. The vast prairie district between Winnipeg and the Rocky



SILVER CITY AND CASTLE MOUNTAIN, ROCKY MOUNTAINS.

x/

g

Mountains proved to be wonderfully rich in its agricultural resources. Towards the mountains great coal fields were discovered, and British Columbia, beyond, was known to contain almost every element of traffic and wealth. Thousands of people had settled on the prairies of the Northwest and their success had brought tens of thousands more. The political reasons for building the railway were lost sight of and commercial reasons took their place, and there was no difficulty in finding a party of capitalists ready and willing to relieve the government of the work and carry it on as a commercial enterprise. The Canadian Pacific Railway Company was organized early in 1881, and immediately entered into a contract with the government to complete the line within ten years.

x/
The railway system of Eastern Canada had already advanced far up the Ottawa valley, attracted mainly by the rapidly growing traffic from the pine forests, and it was from a point of connection with this system that the Canadian Pacific Railway had to be carried through to the Pacific coast, a distance of two thousand five hundred and fifty miles. Of this, the government had under construction one section of four hundred and twenty-five miles between Lake Superior and Winnipeg, and another of two hundred and thirteen miles from Burrard inlet, on the Pacific coast, eastward to Kamloops lake in British Columbia. The company undertook the building of the remaining nineteen hundred and twenty miles, and for this it was to receive from the government a number of valuable privileges and immunities, and twenty-five million dollars in money and twenty-five million acres of agricultural land. The two sections of the railway already under construction were to be finished by the government, and, together with a branch line of sixty-five miles already in operation from Winnipeg southward to the ~~international~~ boundary, were to be given to the company, in addition to its subsidies in money and lands; and the entire railway when completed was to remain the property of the company.

in timber

of the United States

With these liberal subventions the company set about its task most vigorously. While the engineers were exploring the more difficult and less known section from the Ottawa river to and around Lake Superior, and marking out a line for the navvies, work was commenced at Winnipeg and pushed westward across the prairies, where one hundred and sixty miles of the railway were completed before the end of the first year. During the second year the rails advanced four hundred and fifty miles. The end of the third year found them at the summit of the Rocky Mountains, and the fourth in the Selkirks, nearly a thousand and fifty miles from Winnipeg.

While such rapid progress was being made west of Winnipeg, the rails



ROCKY MOUNTAINS, NEAR CANMORE.

x/

x/

advancing at an average rate of more than three miles each working day, for months in succession, and frequently ~~reaching~~ five and even six miles in a day, armies of men with all modern appliances and thousands of tons of dynamite were breaking down the barriers of hard and tough Laurentian and Huronian rocks, and pushing the line through the forests north and east of Lake Superior with such energy that eastern Canada and the Canadian Northwest were united by a continuous railway early in 1885. *Handwritten: for a road*

sc/ The government section from the Pacific coast eastward had meanwhile reached Kamloops lake, and there the company took up the work and carried it on to a connection with the line advancing westward across the Rockies and the Selkirks. The forces working towards each other met in Eagle pass, in the Gold or Columbia range of mountains, and there, on a wet morning, the 7th day of November, 1885, the last rail was laid in the main line of the Canadian Pacific Railway. *at Craigellachie*

sc/ The energies of the company had not been confined to the mere fulfilment of its contract with the government. Much more was done in order that the railway might fully serve its purpose as a commercial enterprise. Independent connections with the Atlantic seaboard were secured by the purchase of lines leading eastward to Montreal and Quebec, branch-lines to the chief centres of trade in eastern Canada were provided by purchase and construction, to collect and distribute the traffic of the main line; and other branch-lines were built in the Northwest for the development of the great prairies.

The close of 1885 found the company, not yet five years old, in possession of no less than 4,315 miles of railway, including the longest continuous line in the world, extending from Quebec and Montreal all the way across the continent to the Pacific ocean, a distance of three thousand and fifty miles; and by the midsummer of 1886 all this vast system was fully equipped and fairly working throughout. Villages and towns and even cities, followed close upon the heels of the line-builders; the forests were cleared away, the prairie's soil was turned over, mines were opened, and even before the last rail was in place the completed sections were carrying a large and profitable traffic. The touch of this young Giant of the North was felt upon the world's commerce almost before his existence was known; and, not content with the trade of the golden shores of the Pacific from California to Alaska, his arms have already stretched out across that broad ocean and grasped the teas and silks of China and Japan to exchange them for the fabrics of Europe. *9*

With just pride in her work, the greatest perhaps that has ever been accomplished by human hands, Canada presents it to the Empire as her contri-



QUEBEC.

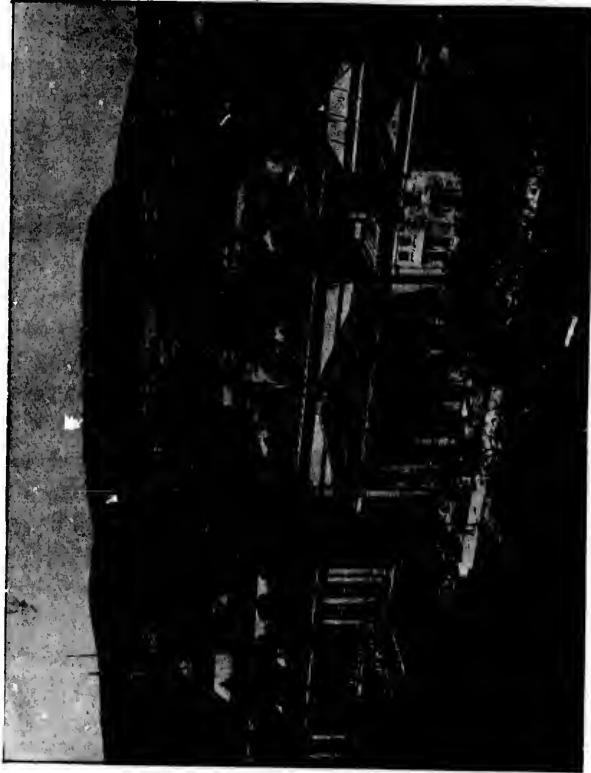
bution to its power and unity,—a new highway to Britain's possessions in the East, guarded throughout by loyal hearts. But she will not rest with this. Her new iron girdle has given a magnetic impulse to her fields, her mines and her manufactories, and the modest colony of yesterday is to-day an energetic nation with great plans, and hopes, and aspirations.

MAY I not tempt you, kind reader, to leave England for a few short weeks and journey with me across that broad land, the beauties and glories of which have only now been brought within our reach? There will be no hardships to endure, no difficulties to overcome, and no dangers or annoyances whatever. You shall see mighty rivers, vast forests, boundless plains, stupendous mountains and wonders innumerable; and you shall see all in comfort, nay, in luxury. If you are a jaded tourist, sick of Old World scenes and smells, you will find everything here fresh and novel. If you are a sportsman, you will meet with unlimited opportunities and endless variety, and no one shall deny your right to hunt or fish at your own sweet will. If you are a mountain climber, you shall have cliffs and peaks and glaciers worthy of your alpenstock, and if you have lived in India, and tiger hunting has lost its zest, a Rocky Mountain grizzly bear will renew your interest in life.

We may choose between a Montreal and a New York steamship. The former will take us directly up the noble St. Lawrence River to the old and picturesque city of Quebec, the "Gibraltar of America" and the most interesting of all the cities of the New World. Its quaint buildings, crowding along the water's edge and perching on the mountain-side, its massive walls and battlements rising tier upon tier to the famous citadel, crowning the mountain-top and dominating the magnificent landscape for many miles around, plainly tell of a place and a people with a history. All about this ancient stronghold, first of the French and then of the English, every height and hillside has been the scene of desperately fought battles. Here the French made their last fight for empire in America, in the memorable battle in which Wolfe and Montcalm fell. But peace has prevailed for many years; the fortifications are giving place to warehouses, manufactories, hotels and universities, and the great new docks of massive masonry indicate that Quebec is about to reenter the contest with Montreal for commercial supremacy in Canada.

Here we find the easternmost extension of the Canadian Pacific Railway and one of its trains will take us in a few hours along the north bank of the

colleges /
/



MONTREAL.

S
to
fr
fr
sl
th
Pr
fo
th
th
th
in
to
tr
th
tr
w
no
R
el
an
ni
w
m
e
V
C
a
f
t
i

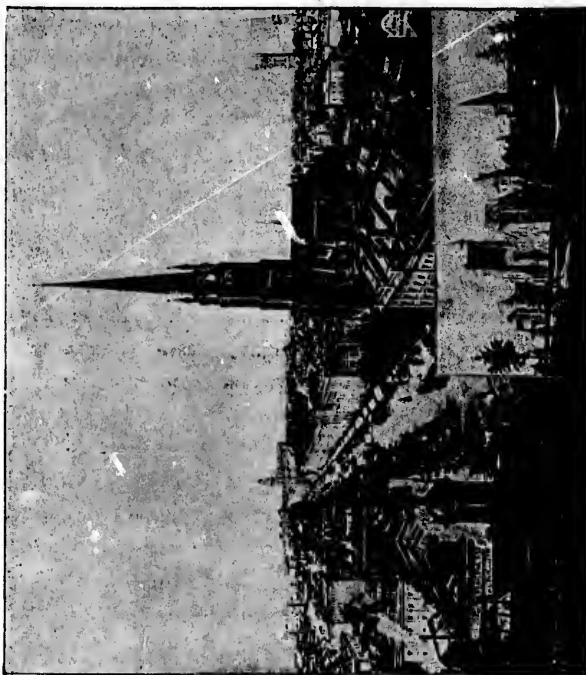
St. Lawrence river, through a well-tilled country and a chain of quaint French towns and villages, to Montreal, the commercial capital of the Dominion.

Had we chosen a New York steamship our route would have brought us from the American metropolis northward by railway along the banks of the fur-famed Hudson river to Albany, and thence through Saratoga and along the shores of Lake Champlain to Montreal,—a day or a night from New York.

Here in Montreal, a hundred years before the British conquest of Canada, the French bartered with the Indians, and from here their hardy soldiers, priests, traders and voyageurs, explored the vast wilderness beyond, building forts, establishing missions and trading-posts, and planting settlements on all of the great rivers and lakes. From here, until long after the British occupation, the wants of the Indians were supplied in exchange for furs and peltries, and in this trade Montreal grew rich and important.

But finally a change came. The appearance of steam navigation in the inland waters accelerated the settlement of the fertile country ~~at~~ the west, towns and cities sprang up about the old outposts of the missionaries and fur-traders, the Indians receded and disappeared, and agricultural products took the place of furs in the commerce of Montreal. Then came the railways penetrating the interior in every direction, bringing greater changes and giving a wonderful impetus to the western country, and Montreal grew apace. And now we find it rising from the broad St. Lawrence to the slopes of Mount Royal, and looking out over a densely peopled country dotted with bright and charming villages,—a large and beautiful city, half French, half English, half ancient, half modern; with countless churches, imposing public buildings, magnificent hotels, and tasteful and costly residences; with long lines of massive warehouses, immense grain elevators and many-windowed factories; and with miles of docks crowded with shipping of all descriptions, from the smallest river craft to the largest ocean vessels.

WHICHEVER way we came, Montreal should be regarded as the ~~initial~~ starting point of our transcontinental journey, for it is the principal eastern terminus of the Canadian Pacific Railway, and it is the terminus not only of the main line, but of numerous other lines built and acquired by the company to gather up and distribute its traffic. From here for a thousand miles we have the choice of two routes. We may go through the farms and orchards of Ontario to Toronto, the second city in importance in Canada, much younger than Montreal, but closely following in the extent



TORONTO.

of
bo
of
ne
si
F
w
br
st
ac
lif
gr
w

ch
w
an

ha
th
va
m
in
m
an
al
w
so
fi
so
d
P
c
r
c
n
l

of its trade and industries, and hoping soon to surpass its older rival in both,—a modern and handsomely built city where the solidity and culture of the older east is combined with the brightness and eager activity of the newer west. Here as at Montreal, many railway lines reach out, and on all sides may be seen the evidences of extensive commerce and great prosperity. From here we may in a few hours visit Niagara, and then, resuming our westward journey by one of the Canadian Pacific lines, four hours will bring us to Owen Sound on Georgian Bay, whence one of the trim Clyde-built steel steamships of the railway company will take us in less than two days across Lake Huron through the straits of Sault Ste Marie, where we will be lifted by enormous locks to the level of Lake Superior, and then across this greatest of fresh-water seas, to Port Arthur, on Thunder bay, where the western section of the Canadian Pacific Railway begins.

But you are impatient to see the mountains, and if you will permit me to choose, dear reader, we will start from Montreal by the main line of the railway, and in order that we may miss nothing we will return by the great lakes, and see Toronto and the Falls of Niagara then.

Although the locomotive is hissing, as if impatient for the signal to go, we have yet a few minutes to spare, and if it is agreeable to you, we will look over the train which is to carry us to the Pacific. Next to the engine we find a long van, in which a number of clerks are busily sorting letters and stowing away mail-sacks, then an express van, and then another laden with baggage. Following them are two or three bright and cheerful colonist-coaches, with seats which may be transformed into bunks at night, and with all sorts of novel contrivances for the comfort of the hardy and good-looking emigrants who have already secured their places for the long journey to the prairies of the Northwest or the valleys of British Columbia. Next we find two or three handsomely fitted coaches for passengers making short trips along the line, and finally come the sleeping-cars or "Pullmans" in one of which we are to live for some days and nights. The railway carriages to which you are accustomed are dwarfed to meet Old World conditions, but these in our train seem to be proportioned to the length and breadth of the land. Our sleeping-car is unlike the "Pullmans" you have seen in England, being much larger and far more luxurious. With its soft and rich cushions, silken curtains, thick carpets, delicate carvings and beautiful decorations, and with its numberless and ingenious appliances for convenience and comfort (even to the bath-room so dear to the travelling Englishman), it gives us promise of a delightful journey.

We glide out of the Montreal terminus, pass long low freight-sheds and

B / -1

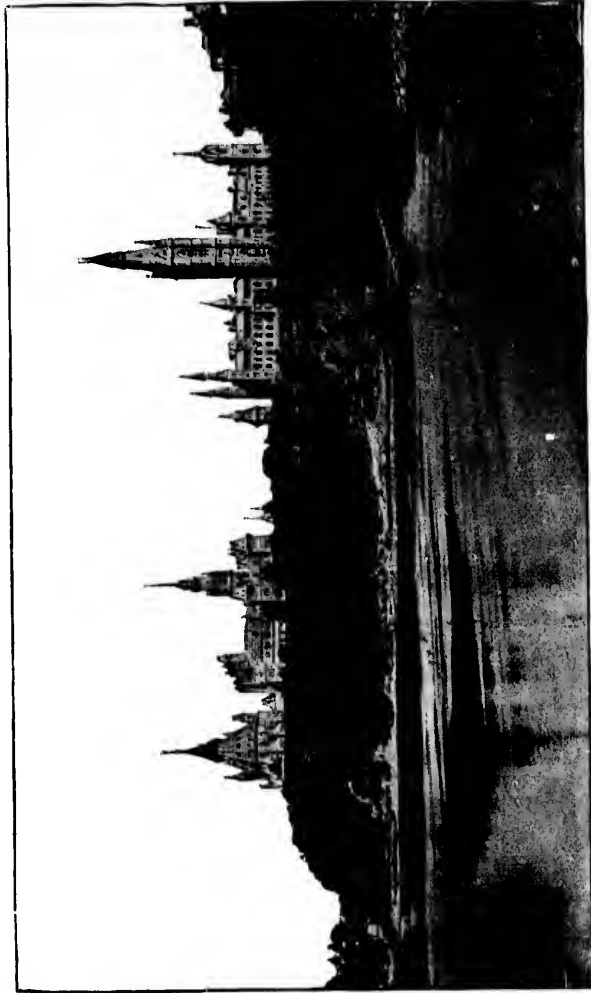
d)

first office

e)

o/

d)



PARLIAMENT BUILDINGS, OTTAWA.

plethoric grain-elevators, run along a terrace above the wharves, pass the railway workshops, and an extensive cattle depot, and leave the city behind. For a time we are still among the old French settlements, as is evidenced by the pretty cottages and the narrow, well-tilled farms. There is an air of thrift and comfort everywhere. We have hills and distant mountains on the one hand and the broad and beautiful Ottawa river on the other. Villages are passed in close succession, and soon we are nearing Ottawa, the capital of the Dominion. High up there, on a bold cliff overlooking the river, are the government buildings, and the Parliament House of the Dominion, with their Gothic towers and many pinnacles, making a magnificent group. Away to the left is Rideau Hall, the residence of the Governor-General, and stretching far over the heights beyond is the city.

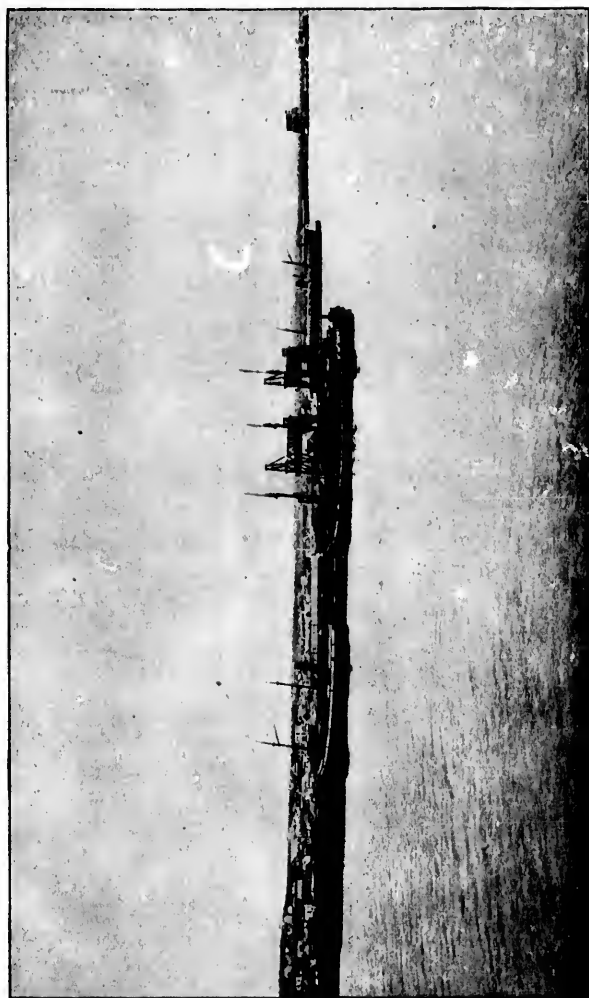
On the broad flats below are acres, perhaps miles, of great square piles of deals, and the cloud that rises beyond comes from the Chaudière falls, where the whole volume of the Ottawa river "takes a tumble," and is made to furnish power to a host of saw-mills and manufactories.

It is no wonder that you have been so absorbed in the wide stretches of the Ottawa river, since we left the Capital behind, that you have quite forgotten it is lunch-time. That white-aproned, white-jacketed boy will bring you sandwiches, coffee, claret and what not. *you will*

We are beyond the French country now; the farms are larger and the modest cottages have given place to farm-houses, many of them of brick and stone and all having a well-to-do air about them. The towns are larger, there are more manufactories and there is more hurry and more noise. At frequent intervals on the river bank are great saw-mills, surrounded by vast piles of lumber. The logs are floated down from the forests on the Ottawa river and its tributaries, and the product is shipped to Europe, to the United States and everywhere.

Gradually the towns become smaller and the farms more scattered; the valley contracts and deepens, and we are in the new country. We leave the Ottawa river, and strike across towards Lake Superior. We are surprised at the thriving villages that have already sprung up here and there, and at the number of hardy pioneers who are clearing away the timber and making homes for themselves. At intervals of four or five hours we come to the railway Divisional Stations, where there are workshops, engine-sheds, and quite a collection of neat cottages. At these places we change engines and then move on. It is a long way from the Ottawa to Lake Superior, but the ever-recurring, rocky, pine-clad hills, pretty lakes, dark forests, glistening streams and cascades, keep

*river**or**G/K /
architectural**e /**negro / X**> /**or*



FORT ARTHUR.

our interest alive. We are alert for the sight of a bear, a moose or a deer, and we do not heed the time. Our only regret is that we cannot stop for even an hour to cast a fly in one of the many tempting pools. A dining-car is attached to our train,—a marvel of comfort and convenience,—and we experience a new and delightful sensation in breakfasting and dining at our ease and in luxury, as we fly along through such wonderful scenery.

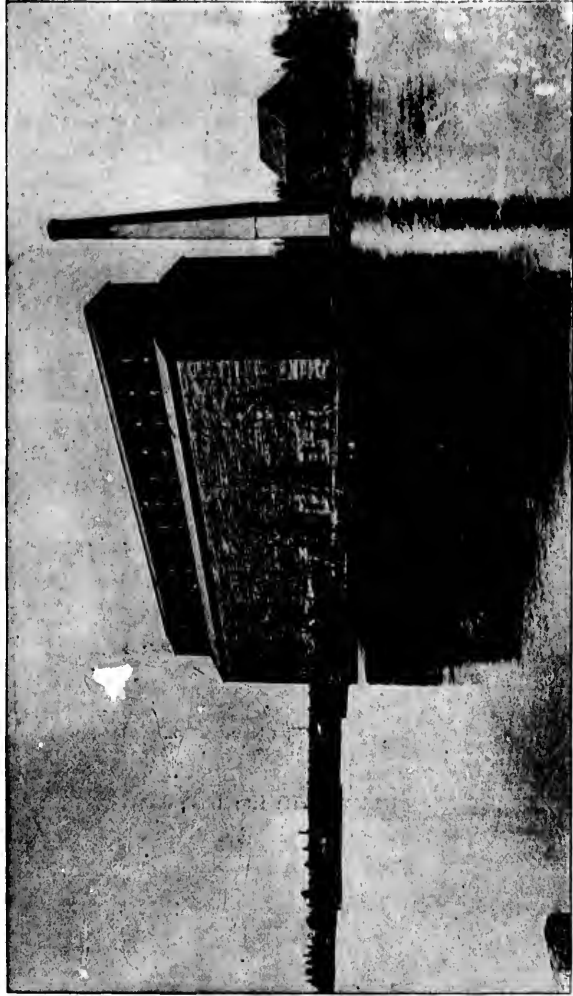
At Sudbury, a new-looking town planted in the forest, we find a branch-line of railway leading off towards the straits of Sault Ste Marie, where it is soon to connect with two or three American lines extending to Duluth, St. Paul and Minneapolis, and beyond; and here at Sudbury we see long lines of cars laden with copper ore from the deposits near by, which contain hundreds of millions of tons, and observe furnaces building, which are soon to smelt the copper ~~here~~. We move on through never-ending hills, meadows, forests and lakes, and now, the second morning from Montreal, we catch glimpses of Lake Superior away to our left, and soon we are running along its precipitous shore. On our right are tree-clad mountains, and there are rocks in plenty all about.

For many hours we look out upon the lake, its face just now still and smooth, and dotted here and there with sails or streaked with the black smoke of a steamer. At times we are back from the lake a mile or more, and high above it; again we are running along the cliffs on the shore as low down as the engineer dared venture. Hour after hour we glide through tunnels and deep rock-cuttings, over immense embankments, bridges and viaducts, everywhere impressed by the extraordinary difficulties that had to be overcome by the men who built the line.

We cross the Nipigon river, famed for its five-pound trout, run down the shore of Thunder Bay and stop at the station at Port Arthur, a thousand miles from Montreal. This place and Fort William, at the mouth of the Kaministiquia river, a short distance further down the bay, constitute together the lake terminus of the western section of the railway.

On the way hither we have met numerous long trains laden with grain and flour, cattle and other freight, but we have not until now begun to realize the magnitude of the traffic of the Northwest. Here on every side we see the evidences of it. Long piers and wharves crowded with shipping, great piles of lumber, coal and merchandise, with the railway grain-elevators looming above all. One of these elevators at Fort William is a monster, holding twelve hundred thousand bushels. And everything new,—the creation of a year!

The scenery here is more diversified and beautiful than any we have yet seen. The wide emerald-green waters of Thunder Bay are enclosed by



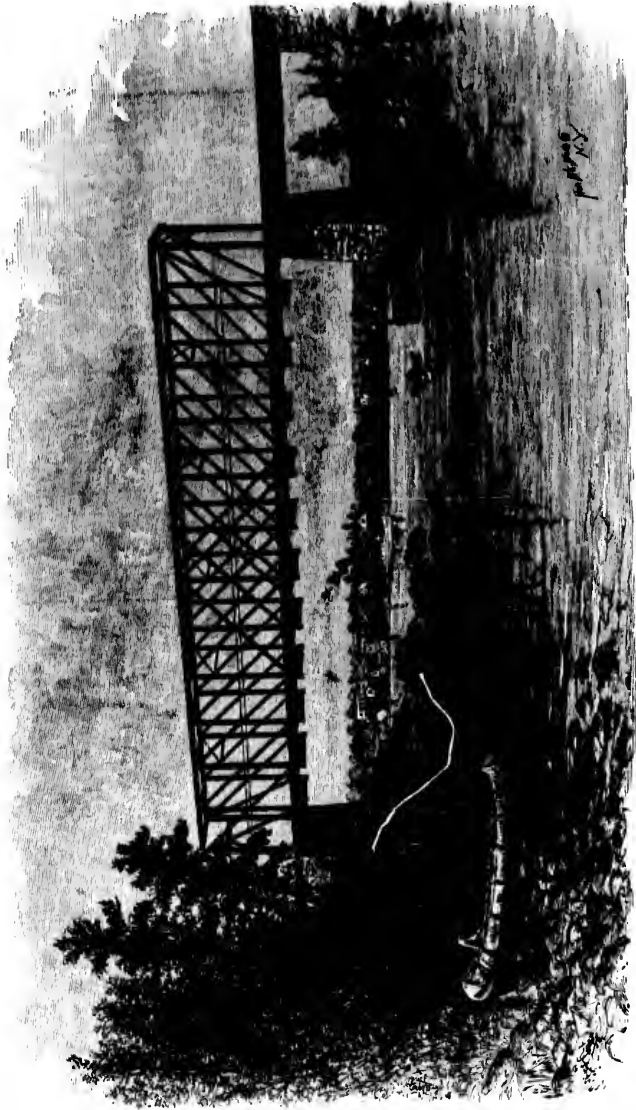
GRAIN ELEVATOR, FORT WILLIAM.

abrupt black-and-purple basaltic cliffs on the one side, and by hills rising roll upon roll on the other. Here the Kaministiquia river, broad, deep and placid, emerges from a dark forest and joins the waters of Lake Superior, giving little token that but a few miles back it has made a wild plunge from a height exceeding that of Niagara itself. Our train is increased to provide for the passengers who have come up by steamer and joined us here, and by a goodly number of pleasure seekers who have been fishing and hunting in the vicinity for a week or two, and who, like ourselves, are bent on seeing the great mountains far to the west. We leave the lake and again move westward, and for a night and part of the following day we are in a wild, strange country. The rivers seem all in a hurry and we are seldom out of sight of dancing rapids or foaming cataracts. The deep, rock-bound lakes grow larger as we move westward. Fires have swept through the woods in places and the blackened stumps and the dead trees, with their naked branches stretched out against the sky, are weird and ghost-like as we glide through them in the moonlight. It was through this rough and broken country, for a distance of more than four hundred miles, that Wolseley successfully led his army in 1870 to suppress a rebellion of the half-breeds on Red River, and some of his abandoned boats are yet to be seen from the railway.

But wild and rough as it is this country is full of natural wealth. Valuable minerals and precious metals abound, and from here, mainly, is procured the timber to supply the prairies beyond. As we draw nearer to the prairies, great saw-mills begin to appear, with piles of lumber awaiting shipment; and at all the stations are large accumulations of timber to be moved westward,—firewood, fence-posts, and beams and blocks for all purposes. Many men find employment in these forests, and villages are growing up at intervals. And, strange as it may seem, hardy settlers are clearing the land and making farms in this wilderness; but these are eastern Canadians who were born in the woods, and who despise the cheap ready-made farms of the prairies.

We suddenly emerge from among the trees and enter the wide, level valley of Red River, and in a little while we cross the river on a long iron bridge, catch a glimpse of many strange looking steamboats, and enter the magic city of Winnipeg.

It will be well worth your while to stop here for a day. Notwithstanding all you have been told about it, you can hardly be prepared to find the frontier trading-post of yesterday transformed into a city of thirty thousand inhabitants, with miles of imposing structures, hotels, stores, banks and theatres, with beautiful churches, schools and colleges, with tasteful and even splendid



HAT PORTAGE.

St. Paul

residences, with immense mills and many manufactories, with a far-reaching trade, and with all the evidences of wealth, comfort and cultivation to be found in cities of a century's growth.

While you will find in Winnipeg the key to much that you will see beyond, you must look beyond for the key to much you will see in Winnipeg. Situated just where the forests end, and the vast prairies begin, with thousands of miles of river-navigation to the north, south and west, and with railways radiating in every direction like spokes ~~in~~ a wheel, Winnipeg has become, what it must always be, the commercial focus of the Canadian Northwest. Looking at these long lines of warehouses, filled with goods, and these twenty miles or more of railway tracks all crowded with cars, you begin to realize the vastness of the country we are about to enter. From here the wants of the people in the west are supplied, and this way come the products of their fields, while from the far north, are brought furs in great variety and number.

AND now for the last stage of our journey. The beautiful sleeping-car in which we came up from Montreal, kept on its way westward whilst we were "doing" Winnipeg, but we find another awaiting us, differing from the first only in name. Looking through the train, we find but few of our fellow-passengers of yesterday. Nearly everybody stops at Winnipeg for a longer or shorter time, some to remain permanently, others to visit the land offices of the government or of the Railway Company; others to purchase supplies or materials for their new prairie homes; and still others only to see the town, as we have done. We find among the new passengers, representatives of all grades of society, gentlemen travelling for pleasure, sportsmen, merchants and commercial travellers, high-born young men seeking fortunes in large farms or in ranching, sturdy English, Scotch, German and Scandinavian immigrants, land-hunters in plenty, with pockets stuffed with maps and with pamphlets full of land lore, gold and silver miners for the mountains, coal miners for the Saskatchewan country, and professional men of all descriptions. There is not a sorrowful visage in the party; every face wears a bright and expectant look, and the wonderfully clear sky and the brilliant sunshine add to the cheerfulness of the scene.

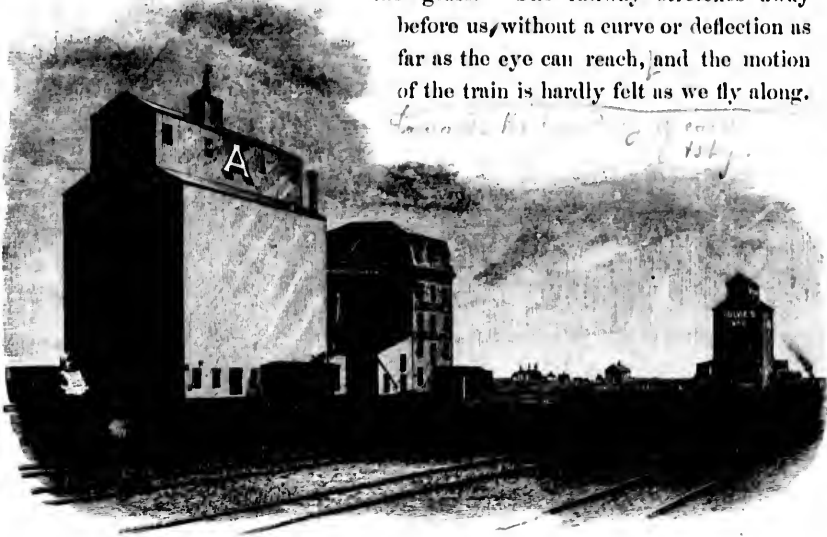
The Rocky Mountains are yet nearly a thousand miles away. A few short years ago this was a six weeks' journey, under the most favorable circumstances, and it was counted a good trip when the old time ox-trains, carrying



WINNIPEG, MANITOBA.

goods and supplies to the distant trading-posts, reached the mountains in three months; but our stages will be numbered by hours instead of days.

Leaving Winnipeg, we strike out at once upon a broad plain as level and green as a billiard table, extending to the north and west apparently without limit, and bordered at the south by a line of trees marking the course of the Assiniboine river. This is not yet the prairie, but a great widening of the valleys of the Red and Assiniboine rivers, which unite at Winnipeg. To the left, and skirting the river, is a continuous line of well-tilled farms, with comfortable farm-houses peering out from among the trees. To the right is a vast meadow, with countless cattle half-hidden in the grass. The railway stretches away before us, without a curve or deflection as far as the eye can reach, and the motion of the train is hardly felt as we fly along.



GRAIN ELEVATORS AND MILL, PORTAGE LA PRAIRIE, MANITOBA.

As we proceed westward, we imperceptibly reach higher ground, and the country is checkered with fields of grain, and dotted far into the distance with farm-houses and grain-stacks.

Fifty-five miles from Winnipeg we reach Portage la Prairie, another city of a day's growth, and the centre of a well-developed and prosperous farming region. Its big grain elevators and flouring mills, its busy streets and substantial houses tell their own story. From here a new railway reaches away two hundred miles to the northwest, making more lands accessible (if more be needed), bringing down grain and cattle, and before long to bring salt and petroleum as well.

Crossing a low range of sand-hills, marking the shore of an ancient lake, we pass through a beautifully undulating country fertile and well-settled, as the busy little towns and the ever-present grain elevators bear evidence.

One hundred and thirty miles from Winnipeg we cross the Assiniboine river, and reach Brandon, next to Winnipeg, the largest town in the Canadian Northwest, a city, in fact, although but five years old, with handsome buildings, well-made streets, and an unusual number of large grain elevators and mills.

Leaving Brandon we have fairly reached the first of the great prairie steppes, that rise one after the other at long intervals to the Rocky Mountains;



WILD GEESE.

and now we are on the real prairie, not the monotonous, uninteresting plain your imagination has pictured, but a great billowy ocean of grass and flowers, now swelling into low hills, again dropping into broad basins with gleaming ponds, and broken here and there by valleys and by irregular lines of trees marking the water-courses. The horizon only limits the view; and, as far as the eye can reach, the prairie is dotted with newly-made farms, with great black squares where the sod has just been turned by the plough, and with herds of cattle. The short, sweet grass, studded with brilliant flowers, covers the land as with a carpet, ever changing in color as the flowers of the different seasons and places give to it their predominating hue.

The deep, black soil of the valley we left in the morning, has given place to a soil of lighter color, over-lying a porous clay, less inviting to the inexperienced agriculturist, but, nevertheless, of the very highest value, for here is produced, in the greatest perfection, the most famous of all varieties of wheat—that known as the "Hard Fyfe wheat of Manitoba"—and oats as well, and rye, barley, and flax, and gigantic potatoes, and almost everything that can be grown in a temperate climate. All these flourish here without appreciable drain upon the soil. Once here, the English farmer soon forgets all about fertilizers. His children may have to look to such things, but he will not.

We pass station after station, nearly all alike, except as to the size of the



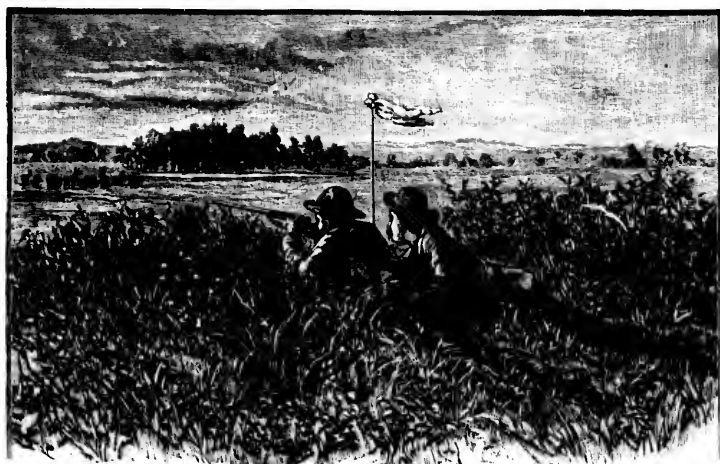
A PRAIRIE STATION.

villages surrounding them, some of which are of considerable importance. The railway buildings at these stations are uniform, and consist of an attractive station-house for passengers and goods, a great round water-tank, cottages for the trackmen, and the never-ending grain elevators—tall, solid structures, always telling the same story. Every minute or two, we see coveys of "prairie chickens" (pinnated grouse) rising from the grass, startled by the passing train. Ducks of many kinds are seen about the frequent ponds, together with wild geese and cranes, and occasionally great white pelicans. The sportsmen have nearly all dropped off at the different stations. Those who remain are after larger game farther west,—antelope or caribou.

Three hundred miles from Winnipeg, we pass through the famous Bell farm, embracing one hundred square miles of land. This is a veritable manu-

factory of wheat, where the work is done with an almost military organization, ploughing by brigades and reaping by divisions. Think of a farm where the furrows are ordinarily four miles long, and of a country where such a thing is possible! There are neat stone cottages and ample barns for miles around, and the collection of buildings about the headquarters near the railway station makes a respectable village, there being among them a church, a hotel, a flour-mill and, of course, a grain elevator, for in this country these elevators appear wherever there is wheat to be handled or stored.

Soon we reach Regina, the capital of the Province of Assiniboia, situated in the centre of an apparently boundless, but very fertile plain. The buildings here have more of a frontier look than those of the larger towns we



ANTELOPE.

have left behind; but it is a busy place, an important centre of trade, and one of the cities of the future. From here a railway branches off to the north, and is pushing away towards Battleford and Edmonton. As we leave the station going westward, we see on our right the governor's residence, and a little beyond, the headquarters of the Northwest mounted police, a body of men of whom Canada is justly proud. This organization is composed of young and picked men, thoroughly drilled, and governed by the strictest military discipline. Their firm and considerate rule won the respect and obedience of the Indians long before the advent of the railway, and its coming was attended with none of the lawlessness and acts of violence which have darkly marked the opening up of new districts elsewhere in America, so wholesome was the fame of these red-coated guardians of the wide prairies.

Leaving Regina we soon pass Moosejaw, four hundred miles from Winnipeg, and commence the ascent of another prairie *steppe*.

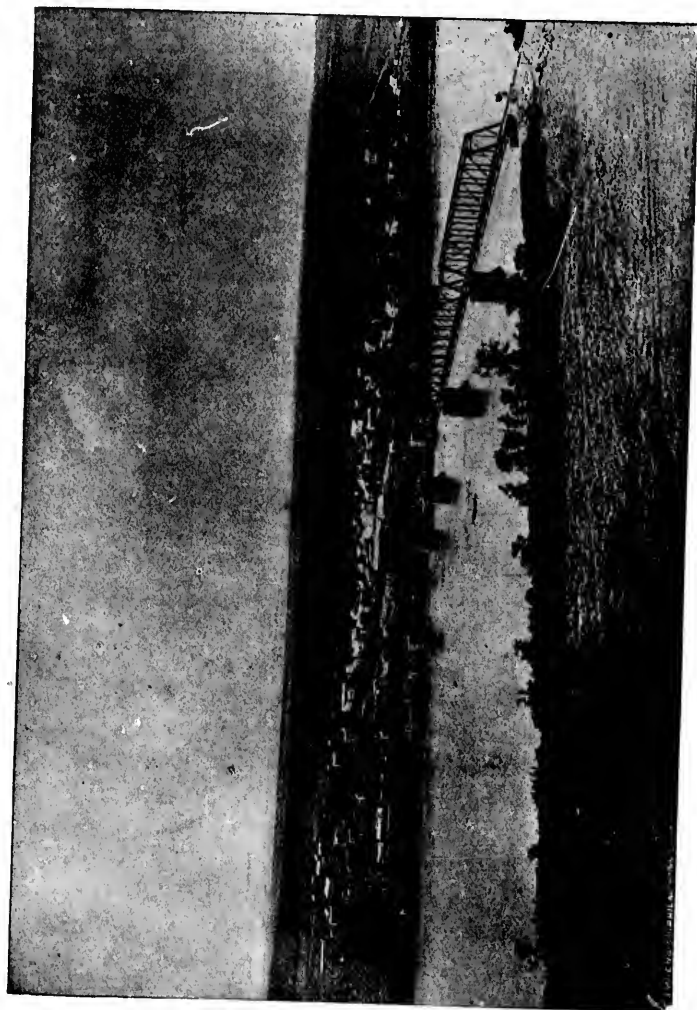
We have now nearly reached the end of the continuous settlement, and beyond to the mountains we shall only find the pioneer farmers in groups here and there. The country, while retaining the chief characteristics of the prairie, becomes more broken, and numerous lakes and ponds occur in the depressions. We shall see no trees now for a hundred miles, and without them the short buffalo-grass gives the country a desolate, barren look; but it is far from barren, as the occasional farms testify through their wonderful growth of cereals and vegetables. There is a flutter of excitement among the passengers, and a rush to the windows. Antelope! We shall see them often enough now. At Chaplin, we come to one of the Old Wive's lakes, which are extensive bodies of water having no outlet, and consequently alkaline.

We are now entering a very paradise for sportsmen. The lakes become more frequent. Some are salt, some are alkaline, but most of them are clear and fresh. Wild geese, cranes, ducks,—a dozen varieties—snipe, plover and curlew, all common enough throughout the prairies, are found here in myriads. Water-fowl blacken the surface of the lakes and ponds, long white lines of pelicans disport themselves along the shores, and we hear the notes and cries of many strange birds whose names I cannot tell you. "Prairie chickens" are abundant on the high ground, and antelope are common in the hills.

The country is reticulated with buffalo trails, and pitted with their wallows. A buffalo is a rare sight now, and the last one will soon have disappeared; but the hope of seeing one keeps all eyes straining. Hour after hour we roll along, with little change in the aspect of the country. The geese and ducks have ceased to interest us, and even a coyote no longer attracts attention; but the beautiful antelope has never-ending charms for us, and, as startled by our approach, he bounds away, we watch the white tuft which serves him for a tail until it disappears in the distance.

We have crossed the high broken country, known here as the Coteau, and far away to the southwest, we see the Cypress Hills appearing as a deep blue line, and, for want of anything else, we watch these gradually rising as we draw near to them. The railway skirts their base for many miles, following what seems to be a broad valley, and crossing many clear little streams making their way from the hills northward to the Saskatchewan. At Maple Creek, a little town with extensive yards for the shipment of cattle, which are driven here from Montana, feeding and fattening on the way, we see the red coats of the mounted

Some of



MEDICINE HAT, MANITOBA.

police who are looking after a large encampment of Indians near by. The Indians are represented on the station platform by braves of high and low degree. Maws and paposes, mostly bent on trading pipes and trinkets for tobacco and silver; a picturesque looking lot, but dirty withal. Leaving the station we catch sight of their encampment a mile or so away, tall, conical "tepees" of well-smoked cloths or skins; Indians in blankets of brilliant colors; hundreds of ponies feeding in the rich grasses; a line of graceful trees in the background, seemingly more beautiful than ever because of their rarity; —all making, with the dark Cypress Hills rising in the distance, a picture most novel and striking.

Two hours later we descend to the valley of the South Saskatchewan and soon arrive at Medicine Hat, a finely situated and rapidly growing town, a thousand miles from Lake Superior. Hereabouts are extensive coal mines from which came the coals we saw moving eastward on the railway; and from near this place a railway extends to other coal mines more than a hundred miles to the southwest. The broad and beautiful Saskatchewan river affords steamboat navigation a long way above, and for a thousand miles or more below; and western enterprise has been quick to seize upon the advantages offered here.

Crossing the river on a long iron bridge, we ascend again to the high prairie, now a rich pasture dotted with lakelets. Everywhere the flower-sprinkled sward is marked by the deep/narrow trails of the buffalo, and the saucer-like hollows where the shaggy monsters used to wallow; and strewn the plain in all directions are the whitened skulls of these noble animals now so nearly extinct. There are farms around many of the little stations even so far west as this, and the herds of cattle grazing on the knolls indicate the "ranch country."

As we approach Crowfoot station all are alive for the first view of the Rocky Mountains, yet more than a hundred miles away; and soon we see them, — a glorious line of snowy peaks rising straight from the plain and extending the whole length of the western horizon, seemingly an impenetrable barrier. As we speed on, peak rises behind peak, then dark bands of forest that reach up to the snow-line come into view; the snow-fields and glaciers glisten in the sunlight, and over the rolling tops of the foothills the passes are seen, cleft deep into the heart of the mountains. We are now in the country of the once dreaded Blackfeet, the most handsome and warlike of all the Indian tribes, but now peacefully settled on a reservation near by. We have been running parallel to the tree-lined banks of the Bow river, and now, crossing its crystal



VALLEY OF THE KICKING HORSE, NEAR HECTOR, B. C.

waters, we find ourselves on a beautiful hill-girt plateau in the centre of which stands the new city of Calgary, at the base of the Rocky Mountains, 2,268 miles from Montreal and 3,416 feet above the ocean.

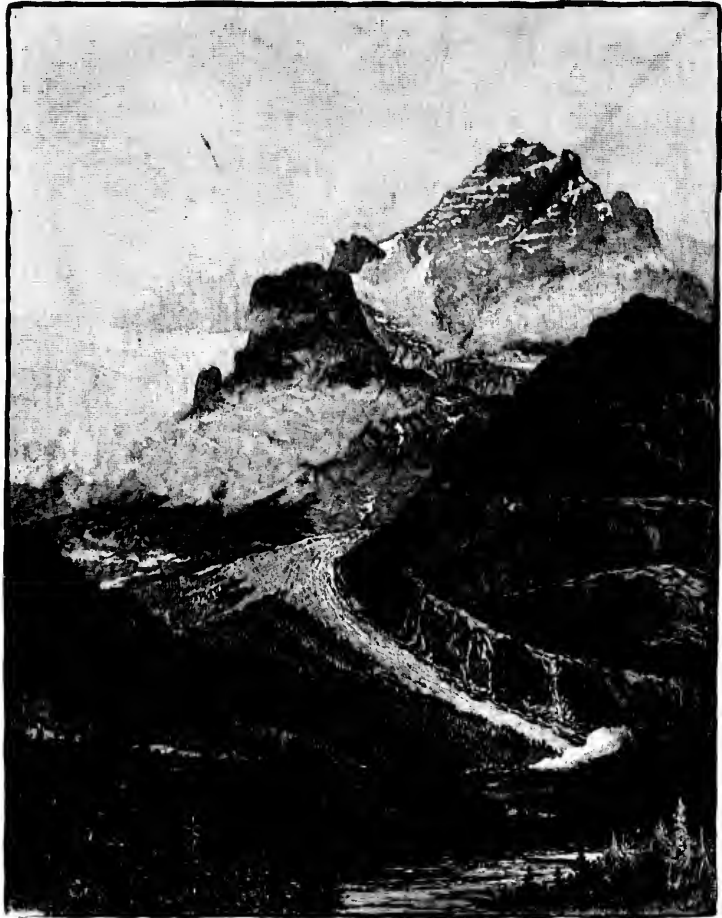
Before us, and on either side, the mountains rise in varied forms and in endless change of aspect, as the lights and shadows play upon them. Behind us is the great sea of open prairie. Northward is the wooded district of Edmonton and the North Saskatchewan, full of moose, elk, bear, and all manner of fur-bearing animals and winged game. Southward, stretching away 150 miles to the United States boundary, is the ranch country.

You may be sure of a cordial welcome should you visit the ranchmen, and it will be worth your while to do so. - You will find them all along the foothills, their countless herds feeding far out on the plain. Cattle and horses graze at will all over the country, summer and winter alike. The warm "Chinook" winds from across the mountains keep the ground free from snow in the winter, except for a day or two at a time, and the nutritious and naturally cured grasses are always within reach of the cattle. In the spring and autumn all the ranchmen join in a "round up," to collect and sort out the animals according to the brands of the different owners; and then the "cow-boy" appears in all his glory. To see these splendid riders "cutting out" or separating the animals from the common herd, lassoing and throwing them, that they may be branded with the owner's mark, or herding a band of free-born and unbroken horses, is well worth coming all this way. The ranchmen, fine fellows from the best families in the East and in England, live here in a lordly way. Admirable horsemen, with abundant leisure and unlimited opportunities for sport, their intense love for this country is no matter of wonder, nor is it surprising that every day brings more young men of the best class to join in this free and joyous life.

All along the base of the mountains clear streams come down to the plain at frequent intervals; coal crops out on the water-courses, and there is timber in plenty throughout the foothills. The soil is rich and deep, and the climate matchless. What more can one desire?

Leaving Calgary and going westward again, the railway follows the Bow River pass for 120 miles, and all this distance between two grand lines of lofty mountains. At every turn of the valley, which is an alternation of precipitous gorges and wide parks, a new picture presents itself. The beautiful river now roars through a narrow defile, now spreads out into a placid lake, reflecting the forests, cliffs and snowy summits. Serrated peaks, and vast pyramids of rock with curiously contorted and folded strata, are followed

R/ C/



MOUNT STEPHEN, NEAR THE SUMMIT OF THE ROCKIES.

by gigantic castellated masses down whose sides cascades fall thousands of feet. The marvellous clearness of the air brings out the minutest detail of this Titanic sculpture. Through the gorges we catch glimpses of glaciers and other strange and rare sights, and, now and then of wild goats and mountain sheep, grazing on the cliffs far above us near the snow line. The mountains would be oppressive in their grandeur, their solemnity and their solitude, but for a mining town or a sportsman's tent now and then, which give a human interest to the scene.

Three hours after leaving Calgary we touch the base of Cascade mountain and soon after stop at the station at Banff, already famous for its hot springs, which possess wonderful curative powers and which have already attracted thousands of people, many of them from great distances. There are hotels here, but not enough as yet to accommodate all of the invalids and tourists; and we find many people living in tents and log huts. A very large and handsome hotel is, however, nearing completion. The district for many miles about has been reserved by the Canadian government as a national park, and much has already been done to add to its natural beauty, or rather, to make its beauties accessible; for in this supremely beautiful place, the hands of man can add but little.

We are reminded by the increasing nearness of the fields of snow and ice on the mountain-slopes that we are reaching a great elevation, and an hour from Banff our train stops at a little station, and we are told that this is the summit of the Rocky Mountains just a mile above the sea, but it is the summit only in an engineering sense, for the mountains still lift their white heads five thousand to seven thousand feet above us, and stretch away to the northwest and the southeast like a great back-bone, as indeed they are — the "backbone of the continent."

Two little streams begin here almost from a common source. The waters of one find their way down to the Saskatchewan and into Hudson's Bay and the other joins the flood which the Columbia pours into the Pacific Ocean. Passing three emerald lakes, deep set in the mountains, we follow the west-bound stream down through a tortuous rock-ribbed cañon, where the waters are dashed to foam in incessant leaps and whirls. This is the Kicking-Horse pass. Ten miles below the summit we round the base of Mount Stephen, a stupendous mountain rising directly from the railway to a height of more than eight thousand feet, holding on one of its shoulders, and almost over our heads, a glacier whose shining green ice, five hundred feet thick, is slowly crowded over a sheer precipice of dizzy height, and crushed to atoms below. From the

s) (7)

+ sulphurous

#

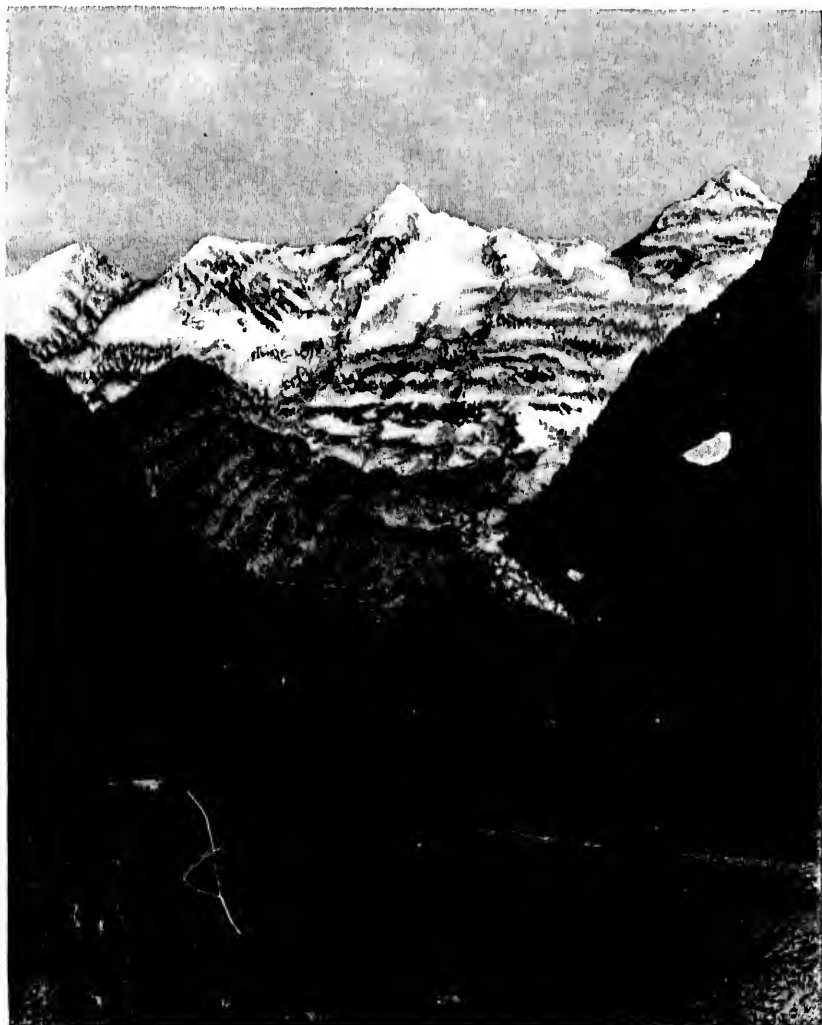
turned by a
fickle's eye

"The
mountain

eye like

3. 2. 1.
"The
mountain"

"The Two Streams"
Professional Breakfast table
chap VI



THE HEART OF THE SELKIRKS, VIEW NEAR GLACIER HOUSE.

railway, clinging to the mountain side, we look down upon the river-valley, which, suddenly widening, here holds between the dark pine-clad mountains a mirror-like sheet of water, reflecting with startling fidelity each peak and precipice.

Still following the river, now crossing deep ravines, now piercing projecting rocky spurs, now quietly gliding through level park-like expanses of greensward, with beautiful trees, pretty lakelets and babbling brooks, we soon enter a tremendous gorge whose frowning walls, thousands of feet high, seem to overhang the boiling stream which frets and roars at their base, and this we follow for miles, half shut in from the daylight.

Two hours from the summit and three thousand feet below it, the gorge suddenly expands, and we see before us high up against the sky a jagged line of snowy peaks of new forms and colors. A wide, deep, forest-covered valley intervenes, holding a broad and rapid river. This is the Columbia. The new mountains before us are the Selkirks, and we have now crossed the Rockies. Sweeping round into the Columbia valley we have a glorious mountain-view. To the north and south, as far as the eye can reach, we have the Rockies on the one hand and the Selkirks on the other, widely differing in aspect, but each indescribably grand. Both rise from the river in a succession of tree-clad benches, and soon leaving the trees behind, shoot upwards to the regions of perpetual snow and ice. The railway turns down the Columbia, following one of the river-benches through gigantic trees for twenty miles to Donald, where a number of our fellow passengers leave us. Some of them are miners or prospectors bound for the silver mines in the vicinity, or the gold "diggings" further down the river; others are ambitious sportsmen who are seeking caribou or mountain sheep—the famous "big horns." They will not fail to run upon a bear now and then, black or cinnamon, and perchance a grizzly.

Crossing the Columbia, and following it down through a great cañon, through tunnels and deep rock cuttings, we shortly enter the Beaver valley and commence the ascent of the Selkirks, and then for twenty miles we climb along the mountain sides, through dense forests of enormous trees, until, near the summit, we find ourselves in the midst of a wonderful group of peaks of fantastic shapes and many colors. At the summit itself, four thousand five hundred feet above tide-water, is a natural resting place—a broad level area surrounded by mountain monarchs all of them in the deadly embrace of glaciers. Strange, under this warm summer's sky, to see this battle going on between rocks and ice—a battle begun æons ago and to continue for æons to come! To the north, and so near us that we imagine



KAMLOOPS, B.C.

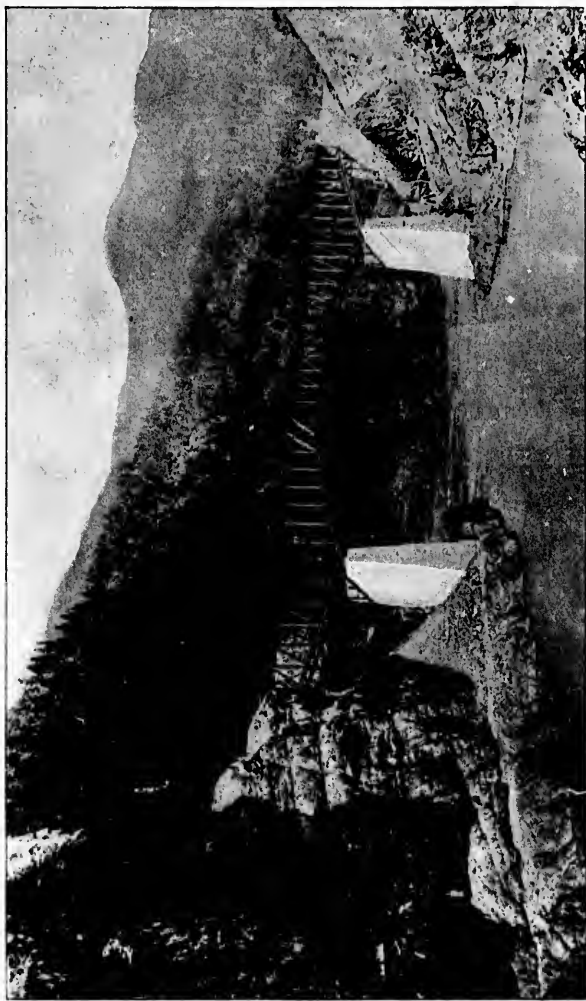
that we hear the crackling of the ice, is a great glacier whose clear green fissures we can plainly see. To the south is another, vastly larger, by the side of which ~~the greatest of those of the Alps~~ would be insignificant. *many of the Alps* Smaller glaciers find lodgment on all the mountain benches and slopes, whence innumerable sparkling cascades come leaping down.

Descending westerly from the summit we reach in a few minutes the Glacier House, a delightful hotel situated almost in the face of the Great Glacier and at the foot of the grandest of all the peaks of the Selkirks — Sir Donald — an acute pyramid of naked rock shooting up nearly eight thousand feet above us, ~~a dozen Matterhorns in all~~. In the dark valley far below us we see the glacier-fed Illicilliwaet glistening through the tree-tops, and beyond and everywhere the mountains rise in majesty and immensity beyond all comparison. To reach the deep valley below, the engineers wound the railway in a series of great curves or loops all about the mountain slopes, and as we move on this marvellous scene is presented to us in every aspect. We plunge again for hours through precipitous gorges, deep and dark, and again cross the Columbia river, which has made a great detour around the Selkirk mountains while we have come directly through them. The river is wider and deeper here, and navigable by steamboats southward for nearly two hundred miles.

We are now confronted by the Gold range, another grand snow-clad series of mountains, but broken directly across, and offering no obstacle to the railway. The deep and narrow pass through this range takes us for forty miles or more between parallel lines of almost vertical cliffs, into the faces of which the line is frequently crowded by deep, black lakes; and all the way the bottom of the valley is thickly set with trees of many varieties and astonishing size, exceeding even those of the Columbia. *2)*

A sudden flash of light indicates that we have emerged from the pass and we see stretching away before us the Shushap lakes, whose crystal waters are hemmed around and broken in every way by abruptly rising mountains. After playing hide-and-seek with these lovely lakes for an hour or two, the valley of the South Thompson river is reached — a wide almost treeless valley, already occupied from end to end by farms and cattle ranches; and here for the first time irrigating ditches appear. Flocks and herds are grazing everywhere, and the ever present mountains look down upon us more kindly than has been their wont. *3)*

The railway passes Kamloops lake, shooting through tunnel after tunnel, and then the valley shuts in and the scarred and rugged mountains frown



BRIDGE OVER THE FRASER RIVER, NEAR CISCO, B.C.

upon us again and for hours we wind along their sides, looking down upon a tumbling river, its waters sometimes almost within our reach and sometimes lost below. We suddenly cross the deep black gorge of the Fraser river, on a massive bridge of steel, seemingly constructed in mid-air, plunge through a tunnel, and enter the famous cañon of the Fraser.

The view here changes from the grand to the terrible. Through this gorge, so deep and narrow in many places that the rays of the sun hardly enter it, the black and ferocious waters of the great river force their way. We are in the heart of the Cascade range, and above the walls of the cañon we occasionally see the mountain-peaks far above us, gleaming against the sky. Hundreds of feet above the river is the railway, notched into the face of the cliffs, now and then crossing a great chasm by a tall viaduct or disappearing in a tunnel through a projecting spur of rock, but so well made, and so thoroughly protected everywhere, that we feel no sense of danger. For hours we are deafened by the roar of the waters below and pray for the broad sunshine once more. The scene is fascinating in its terror, and we finally leave it gladly, yet regretfully.

At Yale the cañon ends and the river widens out, but we have mountains yet in plenty, at times receding and then drawing near again. We see Chinamen washing gold on the sand-bars and Indians herding cattle on the meadows; and the villages of the Indians, each with its little unpainted houses and miniature chapel, alternate rapidly with the collections of huts where the Chinamen congregate. Salmon drying on poles near the river give brilliant touches of color to the landscape, and here and there we see the curious graveyards of the Indians, neatly enclosed and decorated with banners, streamers, and all manner of carved "totems."

A gleaming white cone rises towards the south east. It is Mount Baker, sixty miles away and fourteen thousand feet above us. We cross large rivers flowing into the Fraser, all moving slowly here as if resting after their tumultuous passage down between the mountain ranges. As the valley widens out farms and orchards become more and more frequent, and our hearts are gladdened with the sight of broom and gorse and other shrubs and plants familiar to English eyes, for as we approach the coast we find a climate like that of the south of England, but with more sunshine. Touching the Fraser river now and then, we see an occasional steamboat, and here in the lower part the water is dotted with Indian canoes, all engaged in catching salmon, which visit these rivers in astonishing numbers, and which when caught are frozen and sent eastward by the railway, or canned in great quantities and shipped to all parts of the world.

long

/

house & trees

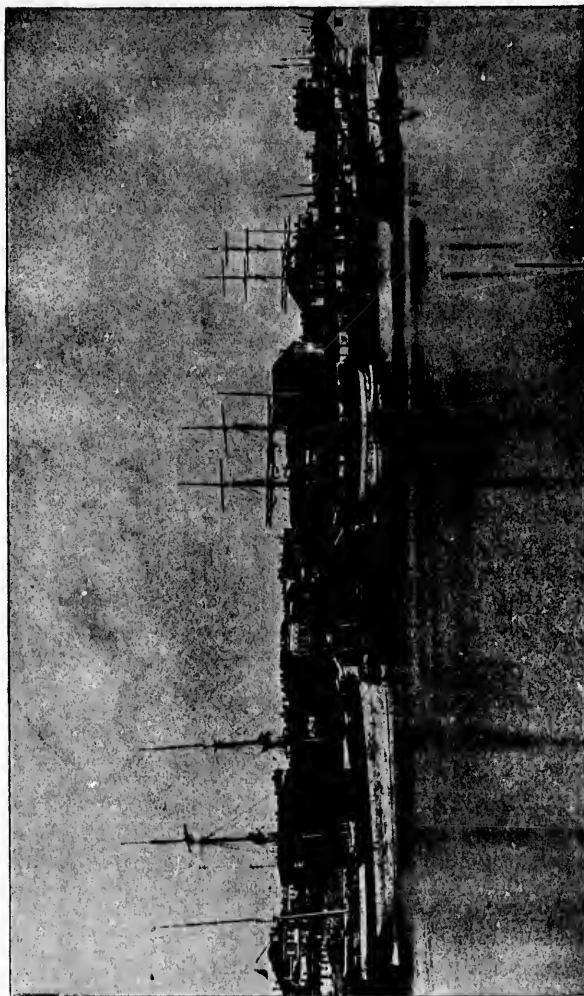


VIEW FROM THE GOVERNOR'S HOUSE, VANCOUVER ISLAND, BY H.R.H. PRINCESS LOUISE.

Passing through a forest of mammoth trees, some of them twelve feet or more in diameter, and nearly three hundred feet high, we find ourselves on the tidewaters of the Pacific at the eastern extremity of Burrard inlet. Following down the shore of this mountain-girt inlet for half an hour, our train rolls into the station at Vancouver, the western terminus of the Canadian Pacific railway.

WE soon find comfortable quarters in a fine hotel, equal to any we have seen in the east, and its situation on high ground affords us a most interesting and charming view of the new city, and the surrounding country. Far away at the southeast Mount Baker looms up all white and serene. At the north, and rising directly from the sea, is a beautiful group of the Cascade mountains bathed in a violet light and vividly reflected in the glassy waters of the inlet. Looking towards the west, out over English bay and the Straits of Georgia, we see the dark-blue mountains of Vancouver island, and at the southwest, beyond the broad delta of Fraser river is the Olympic range, — a long line of opalescent peaks fading into the distance.

At our feet is a busy scene. The city is new indeed; only one or two of its many buildings were here twelve months ago, — a forest stood here then. The men who built the town could not wait for bricks and mortar, and all of the earlier houses were built of wood; but now many solid, handsome structures of brick and stone are going up, and there is more of a come-to-stay look about it all. Down at the water's edge are long wharves where steamships from China and Japan, from California, Puget Sound and Alaska, are discharging or taking in cargoes; and at the warehouses along the wharves are lines of railway cars loading for the east with teas, silks, seal-skins, fish, fruit and many other commodities. Here and there all around the inlet, are great saw-mills, where steamships and sailing vessels are taking in timber and deals for China and Australia, and even for England. A few miles away is New Westminster, on the Fraser, one of the old towns of British Columbia, now quickened into vigorous growth by the advent of the railway, and the columns of smoke rising in that direction tell us of its extensive salmon canneries and saw-mills. There, too, ships are loading for all parts of the world. And over against Vancouver island are other columns of smoke, indicating the great coal mines from which nearly all of the steamships of the Pacific are supplied.



VICTORIA, B.C.

Northward for twelve hundred miles through the Gulf of Georgia and the wonderful fiords of Alaska, where the mountains are embraced in a thousand arms of the sea, pleasure-steamers, crowded with tourists, ply frequently. Southwestward the Straits of Fuca lead out past the entrance to Puget Sound and past the city of Victoria, to the open Pacific. All these waters, from Puget Sound to Alaska, hardly known a few years' ago, are now dotted with all kinds of craft, from the largest to the smallest, engaged in all manner of trade.

No wonder that with all her magnificent resources in precious metals, her coal and iron, her inexhaustible fisheries, and vast forests, her delightful climate and rich valleys, her matchless harbors and her newly-completed transcontinental railway, British Columbia expects a brilliant future; and no wonder that everybody here is at work with all his might!

I ask your pardon, patient reader, for my persistence in showing you all sorts of things as we came along, whether you wished to see them or not. My anxiety that you should miss nothing that you might wish to see is my only excuse. You have been bored nearly to death, no doubt, and I have noticed signs of impatience which lead me to suspect your desire for freedom to go and see as you like, and as you have found that no guide is necessary, I will with your permission, leave you here; but before releasing your hand, let me advise you not to fail, now that you are so near, to visit Victoria, the beautiful capital of British Columbia. A steamer will take you there in a few hours and you will be rewarded in finding a transplanted section of Old England, climate, people and all, more vigorous, perhaps, because of the transplanting. Near Victoria you will find Esquimalt, the North Pacific naval station, and an iron-clad or two, and perchance some old friends from home; and let me advise you, furthermore, to take all of your luggage with you to Victoria, for I am sure you will be in no hurry to come away.

THE CANADIAN PACIFIC RAILWAY.

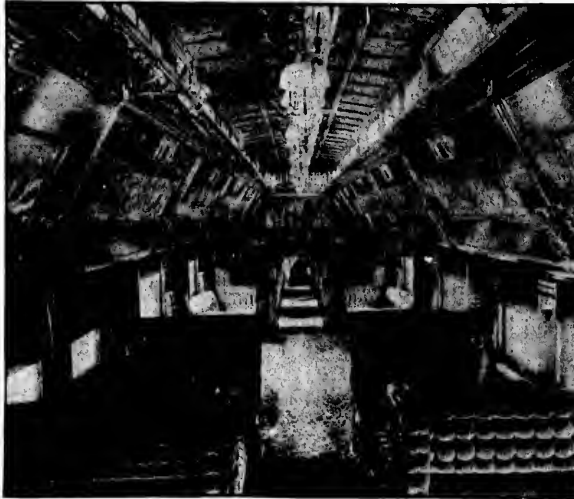
THE IMPERIAL HIGHWAY

FROM

THE ATLANTIC TO THE PACIFIC.

The Newest, The Most Solidly Constructed, and the Best Equipped Transcontinental Route!

Particular attention is called to the **PARLOR** and **SLEEPING-CAR SERVICE**, SO IMPORTANT AN ACCESSORY UPON A RAILWAY WHOSE CARS ARE RUN UPWARDS OF **Three Thousand Miles Without Change.**



CANADIAN PACIFIC SLEEPING-CAR.

These cars are of unusual strength and size, with berths, smoking and toilet accommodations correspondingly roomy. Each transcontinental sleeping-car is provided with

BATH ROOMS,

and all are fitted with double doors and windows to exclude the dust in summer and the cold in winter.

The seats are richly upholstered, with high backs and arms, and the centre sections are made into luxurious sofas during the day.

The upper berths are provided with windows and ventilators, and have curtains separate from those of the

berths beneath. The exteriors are of polished red mahogany, and the interiors are of combined mahogany and satinwood, elaborately carved. While the lamps, brackets, berth-locks, and other pieces of metal work are of old brass of antique design.

THE FIRST-CLASS DAY COACHES are proportionately elaborate in their arrangement for the comfort of the passenger; and, for those who desire to travel at a cheaper rate, **COLONIST SLEEPING CARS** are provided without additional charge. These cars are fitted with upper and lower berths after the same general style as other sleeping-cars, but are not upholstered, and the passenger may furnish his own bedding, or purchase it of the company's agents at terminal stations at nominal rates.

FIRST-CLASS SLEEPING AND PARLOR CAR TARIFF.

FOR ONE LOWER OR ONE UPPER BERTH IN SLEEPING CAR BETWEEN

Quebec and Montreal.....\$1.50	Pt. Arthur & Vancouver...\$15.00	Boston and Montreal.....\$2.00
Montreal and Toronto.....2.00	Toronto and Chicago.....3.00	New York and Montreal...2.00
Montreal and Winnipeg...8.00	Toronto and Detroit.....2.00	Chicago and St. Paul.....3.00
Ottawa and Toronto.....2.00	Toronto and Winnipeg.....8.00	St. Paul and Winnipeg...3.00
Ottawa and Vancouver...20.00	Toronto and Vancouver...20.00	Winnipeg and Vancouver...12.00

FOR ONE SEAT IN PARLOR CAR BETWEEN

Quebec and Montreal.....\$.75	Montreal and Toronto.....\$1.00	Toronto and Owen Sound...\$.50
Three Rivers & Montreal... .50	Ottawa and Toronto..... 1.00	Toronto and St. Thomas... .50
Montreal and Ottawa... .50	Peterboro' and Toronto... .25	Toronto and Detroit.....1.00

Accommodation in First-Class Sleeping Cars and in Parlor Cars will only be sold to holders of First-Class transportation. Between other stations in proportion.

THE CANADIAN PACIFIC RAILWAY **DINING CARS**

Excel in Elegance of Design and Furniture

AND IN THE

Quality of Food and Attendance

ANYTHING HITHERTO OFFERED TO

TRANSCONTINENTAL TRAVELLERS.

The fare provided in these cars is the best procurable, and the cooking has a wide reputation for excellence. Local delicacies such as trout, prairie hens, antelope steaks, Frazer River salmon, succeed one another as the train moves westward.

The wines are of the Company's special importation, and are of the finest quality.



CANADIAN PACIFIC DINING CAR.

FIRST-CLASS DINING STATIONS

are placed at convenient places along the line, and the railway company operates hotels at Field, near the summit of the Rockies, at Glacier station, near the summit of the Selkirks, and at North Bend on the Frazier River.

AT BANFF MINERAL HOT SPRINGS

a new hotel, to accommodate three hundred guests, is in process of erection, and will be completed during the current summer (1887). At this point the Canadian government has established a NATIONAL PARK, and the natural grandeur of the situation, together with the valuable remedial qualities of the spring waters, are sure to make this one of the most famous health and pleasure resorts of the world.

GENERAL OFFICERS CANADIAN PACIFIC RAILWAY.

HEAD OFFICES: MONTREAL CANADA.

SIR GEO. STEPHEN, Bart.	President	Montreal.
W. C. VAN HORNE	Vice-President	"
CHARLES DRINKWATER	Secretary	"
T. G. SHUAUGHNESSY	Assistant General Manager	"
GEORGE OLDS	General Traffic Manager	"
LUCIUS TUTTLE	Passenger Traffic Manager	"
HENRY BEATTY	Manager Steamship Lines and Lake Traffic	Toronto.
I. G. OGDEN	Comptroller	Montreal.
W. SUTHERLAND TAYLOR	Treasurer	"
J. H. McTAVISH	Land Commissioner	Winnipeg.
WM. WHITE	General Superintendent, Western Division	"
HARRY ABBOTT	General Superintendent, Pacific Division	Vancouver.
C. W. SPENCER	Acting Gen. Superintendent, Eastern Division	Montreal.
ROBERT KERR	General Freight and Passenger Agent, W. and P. Divs.	Winnipeg.
D. McNICOLL	General Passenger Agent, Eastern Division	Montreal.
G. M. BOSWORTH	Asst. Freight Traffic Manager, Eastern Division	"
E. TIFFIN	General Freight Agent, Ontario Division	Toronto.
G. W. SWETT	Supt. Dining, Sleeping and Parlor Cars	Montreal.

AGENCIES.

ADELAIDE	Aus.	Agents Oceanic Steamship Co.	
BOSTON	Mass.	{ H. J. Colvin	211 Washington St.
		{ L. S. Dow, Agent B. & L. R.R.	218 Washington St.
BROCKVILLE	Ont.	A. Caswell, Ticket Agent	145 Main Street.
CHICAGO	Ill.	J. Francis Lee, Commercial Agent	232 Clark Street.
GLASGOW	Scotland	Archer Baker, European Traffic Agent	135 Buchanan St.
HALIFAX	N.S.	C. R. Barry, Ticket Agent	126 Hollis Street.
HONG KONG	China	Messrs. Adamson, Bell & Co., Agents for China.	
LIVERPOOL	Eng.	Archer Baker, European Traffic Agent	17 James Street.
LONDON	Eng.	" " " " " " " " " " " "	88 Cannon Street.
LONDON	Ont.	T. R. Parker, Ticket Agent	Richmond St.
MONTREAL	Que.	C. E. McPherson, City Passenger Agent	266 St. James St.
NEW YORK	N.Y.	E. V. Skluner, General Eastern Agent	337 Broadway.
OTTAWA	Ont.	J. E. Parker, City Passenger Agent	42 Sparks Street.
PORTLAND	Ore.	C. G. McCord, Freight and Passenger Agent	6 Washington St.
QUEBEC	Que.	J. McKenna, City Passenger Agent	St. Louis Hotel.
ST. JOHN	N.B.	Messrs. Chubb & Co., Ticket Agents	
ST. JOHN'S	Newf'nd'l'd.	Geo. Shea, Ticket Agent	
SAN FRANCISCO	Cal.	{ Messrs. Goodall, Perkins & Co., Agts. Pac. Coast	10 Market St.
		{ Steamship Co.	
		{ D. B. Jackson, Passenger Agent	214 Montgomery St.
SEATTLE	Wash. Ter.	E. W. MacGinnes	
SHANGHAI	China	Messrs. Adamson, Bell & Co.	
SYDNEY	Australia	Alex. Woods	
TACOMA	Wash. Ter.	E. E. Ellis, Freight and Passenger Agent	
TORONTO	Ont.	W. R. Callaway, District Passenger Agent	110 King Street W.
VANCOUVER	B.C.	D. E. Brown, Dis. Freight and Pass. Agent	
VICTORIA	B.C.	G. A. Carleton, Freight and Passenger Agent	Wharf Street.
WINNIPEG	Man.	G. H. Campbell, City Ticket Agent	471 Main Street.
YOKOHAMA	Japan	Messrs. Frazar & Co., Agents for Japan	

A List of Tours over the Canadian Pacific Railway will be forwarded to any address on application to the Company's Agencies at London or Liverpool, Eng., New York, Boston and Chicago, or to the Passenger Traffic Manager at Montreal.

AY.

cal.

to.
cal.

peg.

uver.
cal.
peg.
cal.

to.
cal.

n St.
on St.
et.
et.
St.
et.

et.
ect.

St.

et.
St.
l.

St.
ry St.

et W.

et.

ncies

