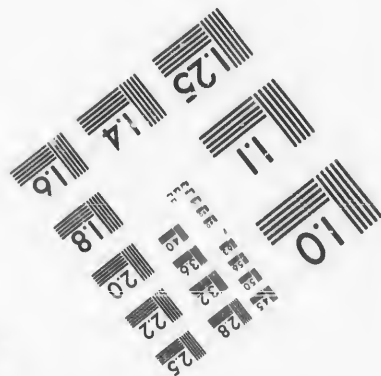
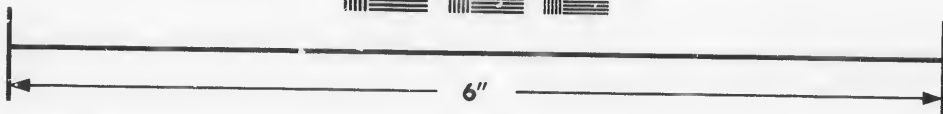
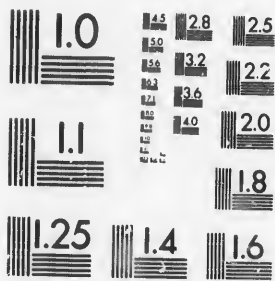


**IMAGE EVALUATION
TEST TARGET (MT-3)**



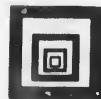
**Photographic
Sciences
Corporation**

23 WEST MAIN STREET
WEBSTER, N.Y. 14580
(716) 872-4503



**CIHM/ICMH
Microfiche
Series.**

**CIHM/ICMH
Collection de
microfiches.**



Canadian Institute for Historical Microreproductions / Institut canadien de microreproductions historiques



© 1986

Technical and Bibliographic Notes/Notes techniques et bibliographiques

The Institute has attempted to obtain the best original copy available for filming. Features of this copy which may be bibliographically unique, which may alter any of the images in the reproduction, or which may significantly change the usual method of filming, are checked below.

L'Institut a microfilmé le meilleur exemplaire qu'il lui a été possible de se procurer. Les détails de cet exemplaire qui sont peut-être uniques du point de vue bibliographique, qui peuvent modifier une image reproduite, ou qui peuvent exiger une modification dans la méthode normale de filmage sont indiqués ci-dessous.

- | | |
|--|--|
| <input type="checkbox"/> Coloured covers/
Couverture de couleur | <input checked="" type="checkbox"/> Coloured pages/
Pages de couleur |
| <input type="checkbox"/> Covers damaged/
Couverture endommagée | <input checked="" type="checkbox"/> Pages damaged/
Pages endommagées |
| <input type="checkbox"/> Covers restored and/or laminated/
Couverture restaurée et/ou pelliculée | <input type="checkbox"/> Pages restored and/or laminated/
Pages restaurées et/ou pelliculées |
| <input type="checkbox"/> Cover title missing/
Le titre de couverture manque | <input checked="" type="checkbox"/> Pages discoloured, stained or foxed/
Pages décolorées, tachetées ou piquées |
| <input type="checkbox"/> Coloured maps/
Cartes géographiques en couleur | <input type="checkbox"/> Pages detached/
Pages détachées |
| <input type="checkbox"/> Coloured ink (i.e. other than blue or black)/
Encre de couleur (i.e. autre que bleue ou noire) | <input checked="" type="checkbox"/> Showthrough/
Transparence |
| <input type="checkbox"/> Coloured plates and/or illustrations/
Planches et/ou illustrations en couleur | <input type="checkbox"/> Quality of print varies/
Qualité inégale de l'impression |
| <input type="checkbox"/> Bound with other material/
Relié avec d'autres documents | <input type="checkbox"/> Includes supplementary material/
Comprend du matériel supplémentaire |
| <input type="checkbox"/> Tight binding may cause shadows or distortion
along interior margin/
Lare liure serrée peut causer de l'ombre ou de la
distorsion le long de la marge intérieure | <input type="checkbox"/> Only edition available/
Seule édition disponible |
| <input type="checkbox"/> Blank leaves added during restoration may
appear within the text. Whenever possible, these
have been omitted from filming/
Il se peut que certaines pages blanches ajoutées
lors d'une restauration apparaissent dans le texte,
mais, lorsque cela était possible, ces pages n'ont
pas été filmées. | <input type="checkbox"/> Pages wholly or partially obscured by errata
slips, tissues, etc., have been refilmed to
ensure the best possible image/
Les pages totalement ou partiellement
obscurcies par un feuillet d'errata, une pelure,
etc., ont été filmées à nouveau de façon à
obtenir la meilleure image possible. |
| <input checked="" type="checkbox"/> Additional comments: / [Printed ephemera] [4] p.
Commentaires supplémentaires: | |

This item is filmed at the reduction ratio checked below/
Ce document est filmé au taux de réduction indiqué ci-dessous.

10X	12X	14X	16X	18X	20X	22X	24X	26X	28X	30X	32X
			<input checked="" type="checkbox"/>								

The copy filmed here has been reproduced thanks to the generosity of:

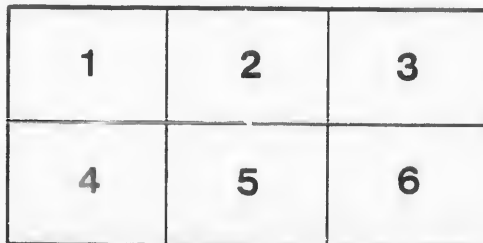
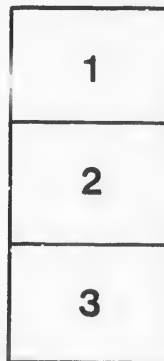
D. B. Weldon Library
University of Western Ontario
(Regional History Room)

The images appearing here are the best quality possible considering the condition and legibility of the original copy and in keeping with the filming contract specifications.

Original copies in printed paper covers are filmed beginning with the front cover and ending on the last page with a printed or illustrated impression, or the back cover when appropriate. All other original copies are filmed beginning on the first page with a printed or illustrated impression, and ending on the last page with a printed or illustrated impression.

The last recorded frame on each microfiche shall contain the symbol \rightarrow (meaning "CONTINUED"), or the symbol ∇ (meaning "END"), whichever applies.

Maps, plates, charts, etc., may be filmed at different reduction ratios. Those too large to be entirely included in one exposure are filmed beginning in the upper left hand corner, left to right and top to bottom, as many frames as required. The following diagrams illustrate the method:



L'exemplaire filmé fut reproduit grâce à la générosité de:

D. B. Weldon Library
University of Western Ontario
(Regional History Room)

Les images suivantes ont été reproduites avec le plus grand soin, compte tenu de la condition et de la netteté de l'exemplaire filmé, at an conformité avec les conditions du contrat de filmage.

Les exemplaires originaux dont la couverture en papier est imprimée sont filmés en commençant par le premier plat et en terminant soit par la dernière page qui comporte une empreinte d'impression ou d'illustration, soit par la second plat, selon le cas. Tous les autres exemplaires originaux sont filmés en commençant par la première page qui comporte une empreinte d'impression ou d'illustration et en terminant par la dernière page qui comporte une telle empreinte.

Un des symboles suivants apparaîtra sur la dernière image de chaque microfiche, selon le cas: la symbole \rightarrow signifie "A SUIVRE", la symbole ∇ signifie "FIN".

Les cartes, planches, tableaux, etc., peuvent être filmés à des taux de réduction différents. Lorsque le document est trop grand pour être reproduit en un seul cliché, il est filmé à partir de l'angle supérieur gauche, de gauche à droite, et de haut en bas, en prenant le nombre d'images nécessaire. Les diagrammes suivants illustrent la méthode.

• LONDON • MASONIC •

Mutual • Benefit • Association



HEAD OFFICE—ROOM D, MASONIC TEMPLE.
RICHMOND STREET, LONDON, ONT.

ORGANIZED MAY 27, 1870.
INCORPORATED MARCH 21, 1874.
REVISED OCTOBER 14, 1885.
REVISED FEBRUARY 8, 1888.

RESERVE FUND, CLASS A, \$65,000
AND INCREASING.

TOTAL AMOUNT PAID TO HEIRS OF DECEASED BROS., \$484,500.00



BOARD OF MANAGEMENT.

V. W. BRO. R. LEWIS - - - - - PRESIDENT
V. W. BRO. M. D. DAWSON - - - - - VICE-PRESIDENT

DIRECTORS,

R. W. BRO. J. S. DEWAR - - - - - St. John's, 209a
" " C. N. SPENCER - - - - - Corinthian, 330
" " D. W. VARY - - St. George's 42 (Strathroy)
" " WM. SKINNER - - - - - St. George's, 42
V. W. " THOS. BROCK - - - - - Kilwinning, 64
" " J. D. SHARMAN - - - - - St. John's, 20

AUDITORS,

W. BRO. JOHN OVERELL - - - - - Kilwinning, 64
BRO. D. C. HANNAH - - - - - St. John's, 20

W. BRO. J. H. FLOCK - - - - - Kilwinning, 64, Solicitor

W. BRO. A. ELLIS, JR. - - - - - St. George's, 42, Sec-Treas.

BRO. E. C. DAVIES. - - - - - Special General Agent, Room 31
Club Chambers, Toronto

BANKERS
BRO. DR. V. A. BROWN - - - - - Canadian Loan Society
Kilwinning, 64, Medical Director

LONDON · MASONIC · MUTUAL · "E"

This Association, belonging exclusively to the Masonic fraternity, on a par with the craft as cheap and reliable as can be met with. The system is a premium system, and the cheapness of the co-operative, while carefully avoided.

RESERVE FUND—CLASS A.

It has a Reserve of \$65,000, larger than any other mutual assessment association on this continent, in proportion to its membership, with a system of constant and permanent growth, calculated to make, in the near future, as full and adequate a guarantee as that obtained by the expensive system of the old line companies. It is raised by each member contributing 25 per cent. of his death claim assessment for 5 years.

ASSESSMENTS—CLASS A.

It has the established actuary's scale of graded assessments according to age, thus giving perfect justice to the young man; while he receives an insurance at less cost than he can get elsewhere.

PROFITS—CLASS A.

After five years, income from Reserve will be distributed every year as profits among the members, to the amount of about 20 per cent. of the cost of their insurance, and those profits constantly on the increase. Thus made cheap, equitable and reliable, shutting out the possibility of a collapse, according to the ordinary laws of business, the Association is enabled to give its members fixed and definite sums, with full assurance that when the inevitable does take place, their friends left behind will not fail to realize the provision which our brethren had fondly made on their behalf.

Certificates are issued for \$500, \$1,000 or \$1,500, at the option of the applicant or applicants.

Entrance Fee to accompany the Application.

\$ 500.....	\$3.00
1000.....	\$6.00
1500.....	\$8.00

Medical examination fee paid by the Association.

The following is the scale of assessment per \$1,000. Half the same for \$500, and one and a-half for \$1,500:

GRADE	AGE	AMOUNT OF RATE IN CLASS A.
• A	—21 to 25.....	\$.97
B	—26 to 30.....	1.08
C	—31 to 35.....	1.20
D	—36 to 40.....	1.32
E	—41 to 45.....	1.48
F	—46 to 50.....	1.71
G	—51 to 55.....	2.12

C
M
T
insu
N
BIRT
2
2
3
3
4
4
5
T
only
mor
for
men
mea
E
from
arre
befo
M
can
T
Law
T
it hi
able
F
Dav
Clu
Nov

MUTUAL · "BENEFIT" · ASSOCIATION

Masonic fraternity, on account of recent changes, is enabled to offer an Insurance with. The system is superior, embodying all the safeguards of the level life, while carefully avoiding their defects.

CLASS B.

Certificates issued for \$1,000 or \$2,000.

ENTRANCE FEE.

\$1,000.....	\$ 6.00
2,000.....	10.00

Medical examination paid for by the Association.

The following is the scale of assessments for each \$1,000 insurance in Class B.

AGE NEAREST BIRTHDAY.	BI-MONTHLY RATES OF EACH \$1,000.	TOTAL YEARLY COST IN SIX PAYMENTS.
21 to 25	\$1 25	\$ 7.50
26 to 30	1.40	8.40
31 to 35	1.55	9 30
36 to 40	1.75	10.50
41 to 45	2.00	12.00
46 to 50	2.35	14.10
51 to 55	3.00	18.00

These assessments are to be made bi-monthly, and six only will be made in a year. They include 25 per cent. of mortuary assessment for Reserve Fund, and 10 per cent. for expenses. After payment by any member of assessments for ten years, his assessments will be reduced 25% by means of the revenue from the reserve fund in this class.

Eligible members of Class A., who wish to retire therefrom and join class B., will be required to pay up any arrears due the Association, and deliver up their Certificates before receiving one in class B.

Members of Class A, holding Certificates in Class A, cannot get more than \$1,000 insurance in Class B.

The Rules and Regulation of the Constitution and By-Laws now in force will govern each Class.

The Board of Directors trust that every member will see it his duty to interest himself in making known our admirable features and the good we are doing the craft.

For further information apply to a Local Agent, to E. C. Davies, Special General Agent for the Dominion, Room 31, Club Chambers, Toronto, or to

A. ELLIS, JR., SEC-TREAS.,

MASONIC TEMPLE, LONDON, ONT.

Nov. 1, 1888.

M.

• Provincial • Directors •



	NAMES.	MASONIC DISTRICT.	P. O. ADDRESS.
R. W	Brc. D. B. Burch.....	London.....	Lambeth
" "	" G. J. Waugh.....	Huron.....	Stratford
" "	" I. C. Hegler.....	Wilson.....	Ingersoll
" "	" J. J. Mason.....	Hamilton.....	Hamilton
" "	" Wm. Forbes.....	Niagara.....	Grimsby
M. "	" Daniel Spry.....	Toronto.....	Toronto
R. "	" John Kerr.....	St. Lawrence.....	Kingston
" "	" A. McGinnis.....	St. Lawrence.....	Belleville
" "	" W. Rea.....	Ottawa.....	Ottawa
M. "	" W. G. Scott.....	Manitoba.....	Winnipeg
R. "	" W. H. Mills.....	Wellington.....	Guelph
" "	" Thos. McNab.....	St. Clair.....	Chatham
" "	" Chas. King.....	Whitby.....	Whitby
" "	" F. Massey.....	Montreal.....	Montreal
" "	" Amos Bowen.....	Quebec.....	Quebec
" "	" D. Thomas.....	Sherbrook.....	Quebec
" "	" W. F. Bunting.....	St. John.....	New Brunswick
" "	" Wilson Higgs.....	Charlottetown.....	P. E. I.
" "	" John P. Noyes.....	Waterloo, Eastern Tps.....	Quebec
" "	" W. Dalby.....	New Westminster.....	B. C.
" "	" John V. Ellis.....	St. John.....	New Brunswick
" "	" A. K. MacKinley.....	Halifax.....	Nova Scotia
" "	" J. Creasor.....	Georgian.....	Owen Sound
" "	" Judge I. Toms.....	Huron.....	Goderich
" "	" J. A. McKay.....	Prince Edward.....	Odessa
" "	" E. Peplow, jr.....	Ontario.....	Port Hope
" "	" H. C. Meyer.....	Huron.....	Wingham

MS of Ch D

Re Can. MS of P.

Exhib² Dec 14/1914

