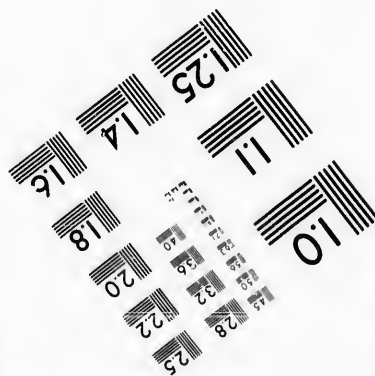
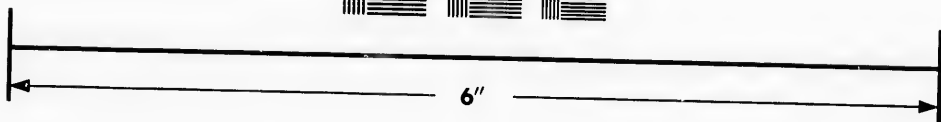
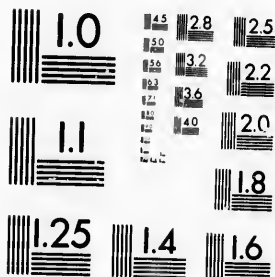


**IMAGE EVALUATION
TEST TARGET (MT-3)**



**Photographic
Sciences
Corporation**

23 WEST MAIN STREET
WEBSTER, N. Y. 14580
(716) 872-4503

**CIHM/ICMH
Microfiche
Series.**

**CIHM/ICMH
Collection de
microfiches.**



Canadian Institute for Historical Microreproductions / Institut canadien de microreproductions historiques

© 1986

Technical and Bibliographic Notes/Notes techniques et bibliographiques

The Institute has attempted to obtain the best original copy available for filming. Features of this copy which may be bibliographically unique, which may alter any of the images in the reproduction, or which may significantly change the usual method of filming, are checked below.

L'Institut a microfilmé le meilleur exemplaire qu'il lui a été possible de se procurer. Les détails de cet exemplaire qui sont peut-être uniques du point de vue bibliographique, qui peuvent modifier une image reproduite, ou qui peuvent exiger une modification dans la méthode normale de filmage sont indiqués ci-dessous.

- | | |
|--|--|
| <input type="checkbox"/> Coloured covers/
Couverture de couleur | <input type="checkbox"/> Coloured pages/
Pages de couleur |
| <input type="checkbox"/> Covers damaged/
Couverture endommagée | <input type="checkbox"/> Pages damaged/
Pages endommagées |
| <input type="checkbox"/> Covers restored and/or laminated/
Couverture restaurée et/ou pelliculée | <input type="checkbox"/> Pages restored and/or laminated/
Pages restaurées et/ou pelliculées |
| <input type="checkbox"/> Cover title missing/
Le titre de couverture manque | <input checked="" type="checkbox"/> Pages discoloured, stained or foxed/
Pages décolorées, tachetées ou piquées |
| <input type="checkbox"/> Coloured maps/
Cartes géographiques en couleur | <input type="checkbox"/> Pages detached/
Pages détachées |
| <input type="checkbox"/> Coloured ink (i.e. other than blue or black)/
Encre de couleur (i.e. autre que bleue ou noire) | <input checked="" type="checkbox"/> Showthrough/
Transparence |
| <input type="checkbox"/> Coloured plates and/or illustrations/
Planches et/ou illustrations en couleur | <input type="checkbox"/> Quality of print varies/
Qualité inégale de l'impression |
| <input type="checkbox"/> Bound with other material/
Relié avec d'autres documents | <input type="checkbox"/> Includes supplementary material/
Comprend du matériel supplémentaire |
| <input type="checkbox"/> Tight binding may cause shadows or distortion
along interior margin/
La reliure serrée peut causer de l'ombre ou de la
distorsion le long de la marge intérieure | <input type="checkbox"/> Only edition available/
Seule édition disponible |
| <input type="checkbox"/> Blank leaves added during restoration may
appear within the text. Whenever possible, these
have been omitted from filming/
Il se peut que certaines pages blanches ajoutées
lors d'une restauration apparaissent dans le texte,
mais, lorsque cela était possible, ces pages n'ont
pas été filmées. | <input type="checkbox"/> Pages wholly or partially obscured by errata
slips, tissues, etc., have been refilmed to
ensure the best possible image/
Les pages totalement ou partiellement
obscurcies par un feuillet d'errata, une pelure,
etc., ont été filmées à nouveau de façon à
obtenir la meilleure image possible. |
| <input checked="" type="checkbox"/> Additional comments: / Printed ephemera [4] p.
Commentaires supplémentaires: | |

This item is filmed at the reduction ratio checked below/
Ce document est filmé au taux de réduction indiqué ci-dessous.

10X	12X	14X	16X	18X	20X	22X	24X	26X	28X	30X	32X
									✓		

The copy filmed here has been reproduced thanks to the generosity of:

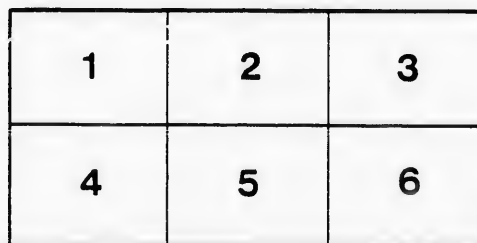
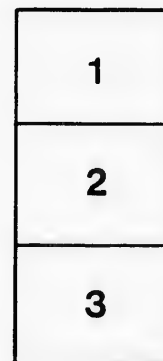
D. B. Weldon Library
University of Western Ontario
(Regional History Room)

The images appearing here are the best quality possible considering the condition and legibility of the original copy and in keeping with the filming contract specifications.

Original copies in printed paper covers are filmed beginning with the front cover and ending on the last page with a printed or illustrated impression, or the back cover when appropriate. All other original copies are filmed beginning on the first page with a printed or illustrated impression, and ending on the last page with a printed or illustrated impression.

The last recorded frame on each microfiche shall contain the symbol \rightarrow (meaning "CONTINUED"), or the symbol ∇ (meaning "END"), whichever applies.

Maps, plates, charts, etc., may be filmed at different reduction ratios. Those too large to be entirely included in one exposure are filmed beginning in the upper left hand corner, left to right and top to bottom, as many frames as required. The following diagrams illustrate the method:



L'exemplaire filmé fut reproduit grâce à la générosité de:

D. B. Weldon Library
University of Western Ontario
(Regional History Room)

Les images suivantes ont été reproduites avec le plus grand soin, compte tenu de la condition et de la netteté de l'exemplaire filmé, et en conformité avec les conditions du contrat de filmage.

Les exemplaires originaux dont la couverture en papier est imprimée sont filmés en commençant par le premier plat et en terminant soit par la dernière page qui comporte une empreinte d'impression ou d'illustration, soit par le second plat, selon le cas. Tous les autres exemplaires originaux sont filmés en commençant par la première page qui comporte une empreinte d'impression ou d'illustration et en terminant par la dernière page qui comporte une telle empreinte.

Un des symboles suivants apparaîtra sur la dernière image de chaque microfiche, selon le cas: le symbole \rightarrow signifie "A SUIVRE", le symbole ∇ signifie "FIN".

Les cartes, planches, tableaux, etc., peuvent être filmés à des taux de réduction différents. Lorsque le document est trop grand pour être reproduit en un seul cliché, il est filmé à partir de l'angle supérieur gauche, de gauche à droite, et de haut en bas, en prenant le nombre d'images nécessaire. Les diagrammes suivants illustrent la méthode.

LONDON F.T.B. & LITHO. CO.

MICHIGAN, OHIO
CANADIAN CIRCUIT
EIGHTEEN
THEATRES

CLEVELAND, CINCINNATI, BUFFALO,
DETROIT, TORONTO,
TOLEDO, LONDON, HAMILTON,
WOODSTOCK, SAGINAW,
GRAND RAPIDS, BAY CITY AND
JACKSON.

Grand OPERA HOUSE London.

C. J. WHITNEY.
LESSEE

A. E. ROOTE.
MANAGER

ONTARIO.



W. SMITH.

E. HOLLAND.

W. S. PARTRIDGE.

SMITH & BROS.

THE
LEADING
SANITARY
PLUMBERS
AND
HEATING
ENGINEERS
OF
WESTERN
ONTARIO.

376
RICHMOND STREET,

LONDON.

OPPOSITE GRAND OPERA HOUSE BUILDING.

A full stock of Supplies always on hand.

TELEPHONE 538.

LADIES! THE ONLY WAY TO GET HELP IS THROUGH THE "FREE PRESS" WANT COLUMN.



**Parisian
Steam
Laundry**

73 & 75 DUNDAS STREET.
BRANCH OFFICES:

226 Dundas St. 752 Waterloo. 410 Hamilton Rd.
480 " " 372 Pall Mall. 261 Wellington.
310 " " 380 Richmond. 339 Ridout.
032 " " 187 " "

J. K. SPRY, Manager.

HUESTON'S

**LIVERY,
Goupe & Gab Stables**
WELLINGTON STREET.

Finest Horses and Carriages in the City.
OPEN DAY AND NIGHT. TELEPHONE 441.

ROBT. HUESTON,
Proprietor.

H. McKENNA,

—FOR—
Choice Cigars, Tobaccos
AND PIPES.

ALWAYS OPEN
..... AFTER THE OPERA.

225 DUNDAS STREET.



— LATEST —

New York Fall Shapes

JUST OPENED.

THEY ARE NOBBY!

Rivard

London's Fashionable Hatter
and Furrier,
400 RICHMOND-ST.

WILLIAMS' Pianos CANADA'S FAVORITE

Cannot be excelled for touch, singing quality, delicacy and great power of tone, with highest excellence of workmanship.

ALL THE LATEST VOCAL AND INSTRUMENTAL MUSIC RECEIVED AS PUBLISHED.

Musical Instruments of all kinds, Strings and Fittings
AT LOWEST PRICES.

R. S. WILLIAMS & SON, 171 DUNDAS STREET,
LONDON, ONT.
J. A. CRODEN, Manager.

«PROGRAMME»

ONE WEEK.

Commencing **MONDAY, SEPT. 18th.**

MATINEE SATURDAY, 1893

ENGAGEMENT OF THE CELEBRATED COMEDIENNE
VERNONA

JARBEHU

Supported by her own Company of Comedy and Musical Talent
in Fred D. Maeler and Robert Frazer's
Musical Farce Comedy,

STARLIGHT

UNDER THE MANAGEMENT OF JEFF D. BERNSTEIN.

«CAST OF CHARACTERS»

Quackleton Quaver, a musical crank
and dealer in sheet music, anxious to become a manager. } .. Ross Snow

Old Muddlebrain, a boss crank. Ed. Sanford

Harold Marker, an artist with a true artist's appreciation of the beautiful. } .. Jas. F. Macdonald

Michael Bralligan, a tramp from America. Gus. Pixley

Munzio Flammetti, the red brigand, but has a voice and weakness for Starlight. Forrest D. Carr

Raphael. { Italian } .. Cora Strong

Anita. { Companions } .. Hattie Wells

Francesca. { of } .. Lella Collins

Paoli. { Starlight } .. Etta Hylands

FITZGERALD, SCANDRETT & CO.

169 Dundas Street.

—IMPORTERS OF—

English Biscuits, Fine Sardines,
Olives, Pickles,

—AND ALL LINES OF—

Staple and Fancy Groceries.

ESTABLISHED 1831.

H. DAVIS & SON,
WATCHMAKERS
AND
JEWELLERS

DEALERS IN
Watches, Clocks, Jewellery, Spectacles,
Silver Plated Ware, &c.

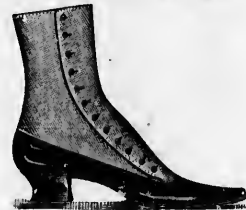
170 DUNDAS ST., LONDON, ONT.

W. T. STRONG

Dispensing
Chemist,

184 Dundas Street,
LONDON, - ONTARIO.

BROWN'S Central
SHOE STORE,
145 Dundas St.



Our fall stock of 1893 surpasses in style, finish and material anything heretofore attempted in the shoe line in London. We handle all the popular and standard styles; are noted for keeping the most satisfactory goods known to the modern buyer, and have superior advantages in procuring the latest American novelties in shoes. We buy no inferior goods; all our stock is of the highest grade and quality, and we guarantee the best results. We carry a complete assortment of the leading manufacturers in the United States and Canada. We can and will sell first-class Fine Italian shoes cheaper than any other house in the west; and we have a very large, new stock of Men's, Youths' and Children's Staple lines in which we cannot be undersold. We have just received a large assortment of the most handsome and artistic designs in Ladies' and Gents' Dress Shoes, and a beautiful selection of Overgaiters in all the leading colors. Our speciality in Ladies' Evening Shoes of the latest New York shades is certainly charming, and must be seen to be appreciated. Our new lines of Baby Moccasins are really elegant. Mothers should not fail to see them.



See our windows, inspect our goods, ascertain our prices, and we are satisfied you will be agreeably surprised.

John S. Brown,
TELEPHONE 881.

IF YOU WANT THE BEST, TAKE THE "FREE PRESS." ALL THE NEWS!

Dress Patterns

We are showing select and exclusive

... DESIGNS ...

NO TWO ALIKE.

Fine Dressmaking.

TELEPHONE 611.

Fine Dry Goods - Mantles, &c.

A. Rolfe

LADIES!

Do not fail to see our

Mantles

in the latest cut in

Childrens and Ladies.

A PLEASURE TO SHOW GOODS.

202 DUNDAS STREET.

« Programme Concluded. »

During the evening, incidental to the stage performance, the ORCHESTRA of the Grand Opera House, under the direction of MR. FRED. L. EVANS, will perform the following selections:

OVERTURE—"Jollities,"..... *Bucholz*
XYLOPHONE SOLO—"Hermina Polka,"..... *Lindor*
SELECTION—"Giroile-Giroila,"..... *Leocq*
GALOP—"Shanghai Rooster,"..... *Ferrazzi*

The above programme subject to transposition.

N. B.—The Orchestra of the Grand Opera House may be secured for engagements outside the theatre, by applying at or addressing the Box Office.

The Furniture used on stage is supplied by JOHN FERGUSON & SON, Furniture Manufacturers.

NEXT + ATTRACTION

SATURDAY, SEPT. 30TH.

GRAND SPECTACULAR PRODUCTION OF

The Silver King

COMPLIMENTARY BENEFIT

— TENDERED TO —

Mr. Geo. Morehead.

The Albion Restaurant

AND SAMPLE ROOM

No. 157 DUNDAS STREET.

— FOR A —

NICE LUNCH

after the Opera, go to the

ALBION + RESTAURANT

Steaks, Chops, Chicken,
Oysters, &c.

OPEN TILL 12.00 P. M.

D. DEWAR, Prop.

Telephone 703.

Roses, Carnations,

Palms,

Ferns, Bulbs,

J. GAMMAGE & SONS,

213 Dundas Street.

INDIAN... TEA IMPORTING HOUSE.

CEYLON

NEW BLENDS, DELICIOUS AND ECONOMICAL, AT MODERATE PRICES.

"English Breakfast," "Five o'clock Tea," & "Club House" Blends.
60c. 50c. 45c.

These Blends are standard selections of choice Teas. Highly recommended to families for their fine quality and economical properties.

S. FUGE,

— IMPORTER OF —
CHOICE TEAS, 436 Richmond St.
TELEPHONE 858. LONDON.



"BETWEEN THE ACTS"

CONSIDER that the theatrical season and the coal-burning season start about the same time, and make a note of it that we fill all orders, large or small, in a prompt and satisfactory manner.

CAMERON'S

CITY OFFICE, - 421 Richmond St.
YARD, - - Burwell St., at G. T. R.

WE call the attention of our business men to the PROMEX as an advertising medium. It reaches the class of people whose trade you want, and the way to get that trade is to make yourself known.

BELTON & ROOTE,

BILL POSTING,

DISTRIBUTING

...AND...

GENERAL ADVERTISING AGENTS

Control all the Bill Boards and Dead Walks throughout the City. Population of City, 40,000.

All orders for Bill Posting, Distributing, Card Tacking, and General Advertising for Western Ontario will receive prompt attention.

OFFICE: BOX OFFICE, OPERA HOUSE.

