

**CIHM
Microfiche
Series
(Monographs)**

**ICMH
Collection de
microfiches
(monographies)**



Canadian Institute for Historical Microreproductions / Institut canadien de microreproductions historiques

© 1995

Technical and Bibliographic Notes / Notes technique et bibliographiques

The Institute has attempted to obtain the best original copy available for filming. Features of this copy which may be bibliographically unique, which may alter any of the images in the reproduction, or which may significantly change the usual method of filming are checked below.

- Coloured covers / Couverture de couleur
- Covers damaged / Couverture endommagée
- Covers restored and/or laminated / Couverture restaurée et/ou pelliculée
- Cover title missing / Le titre de couverture manque
- Coloured maps / Cartes géographiques en couleur
- Coloured ink (i.e. other than blue or black) / Encre de couleur (i.e. autre que bleue ou noire)
- Coloured plates and/or illustrations / Planches et/ou illustrations en couleur
- Bound with other material / Relié avec d'autres documents
- Only edition available / Seule édition disponible
- Tight binding may cause shadows or distortion along interior margin / Le reliure serrée peut causer de l'ombre ou de la distorsion le long de la marge intérieure.
- Blank leaves added during restorations may appear within the text. Whenever possible, these have been omitted from filming / Il se peut que certaines pages blanches ajoutées lors d'une restauration apparaissent dans le texte, mais, lorsque cela était possible, ces pages n'ont pas été filmées.
- Additional comments / Commentaires supplémentaires:

L'Institut a microfilmé le meilleur exemplaire qu'il lui a été possible de se procurer. Les détails de cet exemplaire qui sont peut-être uniques du point de vue bibliographique, qui peuvent modifier une image reproduite, ou qui peuvent exiger une modifications dans la méthode normale de filmage sont indiqués ci-dessous.

- Coloured pages / Pages de couleur
- Pages damaged / Pages endommagées
- Pages restored and/or laminated / Pages restaurées et/ou pelliculées
- Pages discoloured, stained or foxed / Pages décolorées, tachetées ou piquées
- Pages detached / Pages détachées
- Showthrough / Transparence
- Quality of print varies / Qualité inégale de l'impression
- Includes supplementary material / Comprend du matériel supplémentaire
- Pages wholly or partially obscured by errata slips, tissues, etc., have been refilmed to ensure the best possible image / Les pages totalement ou partiellement obscurcies par un feuillet d'errata, une pelure, etc., ont été filmées à nouveau de façon à obtenir la meilleure image possible.
- Opposing pages with varying colouration or discolourations were filmed twice to ensure the best possible image / Les pages s'opposant ayant des colorations variables ou des décolorations ont été filmées deux fois afin d'obtenir le meilleur image possible.

This item is filmed at the reduction ratio checked below /
Ce document est filmé au taux de réduction indiqué ci-dessous.

10X		14X		18X		22X		26X		30X
<input type="checkbox"/>	<input type="checkbox"/>	<input type="checkbox"/>	<input type="checkbox"/>	<input type="checkbox"/>	<input type="checkbox"/>	<input checked="" type="checkbox"/>	<input type="checkbox"/>	<input type="checkbox"/>	<input type="checkbox"/>	<input type="checkbox"/>
	12X		16X		20X		24X		28X	32X

The copy filmed here has been reproduced thanks to the generosity of:

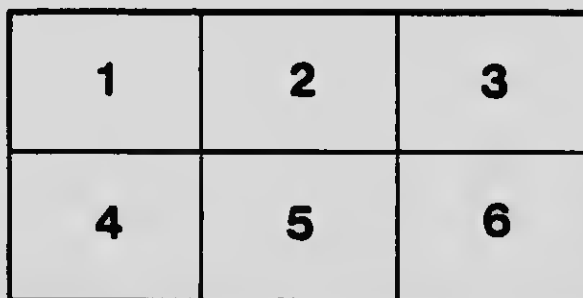
University of Victoria
McPherson Library

The images appearing here are the best quality possible considering the condition and legibility of the original copy and in keeping with the filming contract specifications.

Original copies in printed paper covers are filmed beginning with the front cover and ending on the last page with a printed or illustrated impression, or the back cover when appropriate. All other original copies are filmed beginning on the first page with a printed or illustrated impression, and ending on the last page with a printed or illustrated impression.

The last recorded frame on each microfiche shall contain the symbol \rightarrow (meaning "CONTINUED"), or the symbol ∇ (meaning "END"), whichever applies.

Maps, plates, charts, etc., may be filmed at different reduction ratios. Those too large to be entirely included in one exposure are filmed beginning in the upper left hand corner, left to right and top to bottom, as many frames as required. The following diagrams illustrate the method:



L'exemplaire filmé fut reproduit grâce à la générosité de:

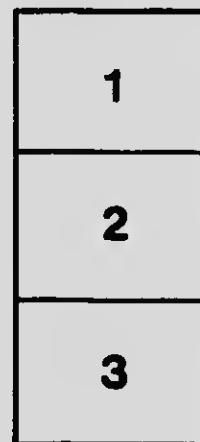
University of Victoria
McPherson Library

Les images suivantes ont été reproduites avec le plus grand soin, compte tenu de la condition et de la netteté de l'exemplaire filmé, et en conformité avec les conditions du contrat de filmage.

Les exemplaires originaux dont la couverture en papier est imprimée sont filmés en commençant par le premier plat et en terminant soit par la dernière page qui comporte une empreinte d'impression ou d'illustration, soit par le second plat, selon le cas. Tous les autres exemplaires originaux sont filmés en commençant par la première page qui comporte une empreinte d'impression ou d'illustration et en terminant par la dernière page qui comporte une telle empreinte.

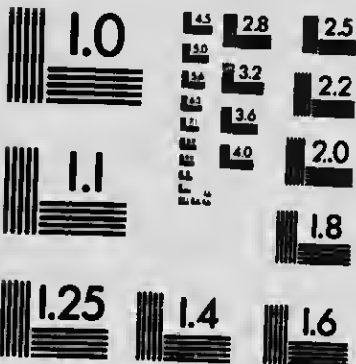
Un des symboles suivants apparaîtra sur la dernière image de chaque microfiche, selon le cas: le symbole \rightarrow signifie "A SUIVRE", le symbole ∇ signifie "FIN".

Les cartes, planches, tableaux, etc., peuvent être filmés à des taux de réduction différents. Lorsque le document est trop grand pour être reproduit en un seul cliché, il est filmé à partir de l'angle supérieur gauche, de gauche à droite, et de haut en bas, en prenant le nombre d'images nécessaire. Les diagrammes suivants illustrent la méthode.



MICROCOPY RESOLUTION TEST CHART

(ANSI and ISO TEST CHART No. 2)



APPLIED IMAGE Inc

1853 East Main Street
Rochester, New York 14609 USA
(716) 482-0300 - Phone
(716) 288-5989 - Fax

Follow the Birds
to
VICTORIA
B. C.





Inner Harbor Approach to the City of Victoria

The Call of Victoria

The delightful capital city of British Columbia, with her unrivalled environment of scenic attractions, is reaching out to increasing thousands each year. The discriminating tourist and pleasure seeker who is looking for the ultimate of picturesque charm, so bountifully bestowed by the gracious hand of nature on this beautiful spot, will have his expectations fully satisfied by a sojourn amidst the attractions of "The City That Is Different." He who but passes through, using the time between boats for a casual glance, will have missed the delights of one of the most attractive tourist regions of the continent, otherwise assured by a stay of some days or weeks.

The City of Victoria, situated at the southernmost point of "The Island of a Thousand Miles of Wonderland," an island of enchantment, named after Captain George Vancouver, of the British Navy who discovered it in 1792, is reached by a delightful water trip of a few hours from the City of Seattle, or from the British Columbia mainland rail terminal at Vancouver. Nowhere are water landscapes quite equal to those to be viewed on Puget Sound and the Straits of Juan de Fuca,

between Seattle and Victoria, or on the waters of the Gulf of Georgia between Vancouver and Victoria. The excellence of the service of the steamships connecting the State of Washington and British Columbia mainland with the Port of Victoria insures an added joy to the delightful trip.

There is an enticing welcome to the traveller entering the beautifully picturesque harbor of Victoria with



Cadboro Bay Beach

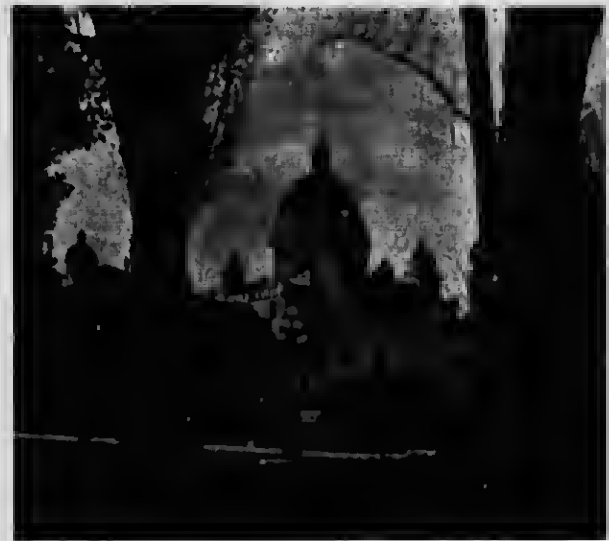
its setting of the blue-tinted Sooke Hills, of Little Saanich Mountain, upon which is seen in flashing whiteness the Dominion Government Observatory, housing one of the two largest telescopes of the world, and with a foreground of beautiful trees, shrubs, flower-gardens and majestic buildings. The nearby Olympic range of mountains lends its snowcapped grandeur to a scene that Rudyard Kipling, the eminent poet and writer compares to a combination of world-famous beauty spots in the following language: "To realize Victoria you must take all that the eye admires most in Bourne-mouth, Torquay, the Isle of Wight, the Happy Valley at Hong Kong, the Doon, Sorrento, and Camps Bay; add reminiscences of the Thousand Islands, and arrange the whole round the Bay of Naples with some Himalayas for the background."



Golf Is Played Every Day in the Year at Victoria

Victoria is noted for its magnificent drives, the beauties of which cannot be appreciated by a hurried survey.

Radiating from the City's centre are numerous incomparable highways, a joy to the motorist, leading through the beautiful residential sections of tree-bordered and boulevarded streets and along the ocean shores to the picturesque rural districts beyond, that open new delights to the sight-seer. The many drives through the lovely Saanich Peninsula, skirting Cadboro and Cordova Bays, and past charming Elk Lake, and on to Deep Bay, and to the Observatory, Butchart's wonderfully beautiful sunken gardens and Brentwood, and to Sooke Harbor, are long to be remembered, and such excellent roads, both paved and hard surfaced that



Parliament Buildings at Victoria

are a marvel to the motorist from afar who does not anticipate such excellence. And then there is the wonderful Malahat, one of the famous drives of the Continent, ascending for 1,250 feet above the blue waters of lovely Saanich Arm, an arm of the sea, and on farther north to the various up-Island resorts and beauty spots, among which may be mentioned Shawnigan Lake, with an excellent tourist hotel; Cowichan Bay, famed for its salmon fishing, where most comfortable hotel accommodations are provided, and to the quaint English town of Duncan, centre of the beautifully picturesque Cowichan District a district rich in agricultural, fruit-growing and poultry-raising potentialities. A stone's throw from Duncan ripples the

enchanting Cowichan River on its course to the sea—a river with a continent-wide reputation for its excellent trout fishing. From Duncan a side trip should be made to Cowichan Lake, a beautiful body of water 30 miles long, that offers exceptional attractions to the sportsman. Its waters teem with gamey trout, and the forests bordering its shores harbor feathered and furred game to the hunter's fondest dreams. Very comfortable hotel accommodations are assured the traveller at

ture-sque town, charmingly situated overlooking a beautiful bay. From here the tourist continues on to Parksville, where the roads (whether by rail or highway) diverge, one branch to Port Alberni on a wonderful arm of the Pacific Ocean that extends inland for many miles from the West Coast of the Island, and the other skirting the East Coast to Courtenay, from which point the Motor Highway proceeds on to Campbell River. The trip to Port Alberni is exceptionally



Moonlight on the Olympics from Marine Drive, Victoria

Cowichan Lake, and every facility for the fisherman in the way of launches and boats is provided. The drive from Duncan to Cowichan Lake through a stretch of wonderful timber is particularly attractive.

Proceeding on from Duncan, the towns of Chemainus and Ladysmith are viewed before Nanaimo is reached the latter an important coal-shipping point for the extensive mines near by. Nanaimo is a quaintly pic-

attractive, leading along the shores of Cameron Lake, a mountain gem with excellent trout fishing and an hotel—The Chalet—providing splendid accommodation, and on for miles through a magnificent forest, untouched by the hand of man, the immense trees which are compared to the pillars of some Gothic cathedral.



**Dominion Observatory, Housing
Two of the Two
Largest Telescopes in the World**

The attractively situated town of Port Alberni looks out on the majestic waters of Alberni Canal, a deep and mountain-skirted arm of the Pacific capable of giving anchorage to the shipping of the world. From Port Alberni a trip should be made to Sproat and Great Central Lakes, two beautiful bodies of water teeming with game-fish and set in frames of scenic loveliness. Both lakes have excellent accommodation for the sportsman and tourist.



The Famous Malahat Drive

Returning to Parksville, a delightful seaside resort with a charming inn for the comfort of travellers, situated on a beautiful beach, the Island Highway is again reached for a continuation of the trip to Courtenay and Campbell River—or the Railway to Courtenay. Leaving Parksville, the eastern seashore is followed to Qualicum Beach, where the delightfully situated Qualicum Beach Hotel, overlooking a splendid golf course and the sea, invites the tourist to tarry for a week or a day. Onward through a diversity of seashore and woodland beauty until the town of Courtenay is reached, and where two excellent hotels cater to the wants and comfort of the traveller. Courtenay is the centre for the rich Comox Valley Agricultural District, and is a growing town full



**Swimming Gala at the Gorge
An Arm of the Sea**

of enterprise situated on the Courtenay River, an excellent fishing stream, and looks over beautiful Comox Bay. Beyond Courtenay, the Highway skirts the beach for miles and again winds its way through wonderful forests of fir and cedar until Campbell River is reached. Here is the fisherman's ultimate goal, the essence of his dreams, for here he will find salmon and trout fishing unequalled anywhere on the continent. Campbell River has an excellent hotel, and every facility to meet the wants of the fisherman. The Highway continues on for nine miles to Forbes Landing, on Campbell Lake, the last outfitting point for the fisherman who, primed with the enthusiasm of an Izaak Walton, would pursue his fondest hopes of catches untold to the upper reaches of the Campbell River.



Sooke Harbor and Olympics from Sooke Harbor Hotel

Those who may wish to proceed to the Strathcona Park region, where magnificent scenery and wonderful fishing await, can secure pack horses and equipment at Forbes Landing.



Saanich Arm, From Brentwood Hotel

Midway between Campbell River and Forbes Landing, a mile off the main Highway, are the marvelous Elk Falls. The thunderous roar and crash of falling waters is heard for a mile or more before the majestic scene meets the eye and what a scene! No words are adequate to describe this wondrous cataract. The full volume of the river plunges for over 200 feet into a seething caldron, from which arises for hundreds of feet a cloud of spray and mist with an exquisite rainbow diadem—truly a sight worth while, and comparatively unknown to those who follow the beaten paths of travel.

It is difficult to give in a word picture the faintest conception of the Island's scenic beauty. It remains in large part unscarred by civilization and yielding little to the menace of years. Romance, history, fact, all join



Thro' the Gulf Islands on Mirrored Channels

in the story of this treasure island. It is a marvel of interest and loveliness, and the richest portion of Canada in the variety of its natural resources. From its rugged headlands, delightful ocean beaches, tumbling waterfalls, rivers and brooks where the trout leap, mountain ranges and peaks towering heavenwards, flashing, ice-clear streams fed by the glaciers from lofty summits, lakes of purest turquoise, cupped in fir-fringed defiles, canyons of grandeur and beauty and forests gray with the ages, to its beautiful stretches of agricultural and fruit-growing districts, it offers a play-ground of exceptional attraction alike to the visiting tourist and the resident who is unsated by its beauties.

MAKE VICTORIA YOUR PIVOTAL POINT for sight-seeing. The surrounding attractions of Victoria will keep the visitor fully interested for days. A suggested few of the local and nearby points of interest and drives are:—

DRIVES: Ocean Beaches, Gordon Head, Douglas Park, Cordova Bay, Dominion Government Observa-

tory Butchart's Sunken Gardens, Brentwood, Saanich Peninsula Drive, Deep Cove, etc., Colwood, Metchosin and Sooke Drive, Malahat Drive and Shawnigan Lake.

OCEAN BEACHES: Fowl Bay, Shoal Bay, Oak Bay, Willows Beach, Cadboro Bay, Cordova Bay, the Gorge Bathing Beach.



Among the Vancouver Island Alps

LOCAL ATTRACTIONS: The Gorge Park Beacon Hill Park, Natural History Museum, Provincial Library, Meteorological Observatory, Esquimalt Harbor, with one of the largest drydocks in the world now under construction, Marine Drive and residential section, House of Parliament, etc.

THE GULF ISLANDS TRIP: A day's cruise among Island gems on mirrored channels of beauty, unequalled by the famed "Thousand Islands" of the St. Lawrence, is a delightful trip. The steamer "Island Princess", of the Canadian Pacific Service, leaves Victoria Wednesdays and Saturdays at 8:00 a.m., returning at 7:00 p.m.

Fishing on Vancouver Island

Victoria is not only the gateway to the scenic, but also to the hunting and fishing resorts of Vancouver Island, which are so favorably known throughout America, as to win for this favored spot the appellation of "The Sportsman's Paradise."



Turquoise Lakes With Glacier-laden Mountains

Good fishing may be obtained in the vicinity of the city itself at the various ocean bays and lakes and streams within a radius of fifteen or twenty miles. At Tod Inlet, served by the British Columbia Electric, R.R., salmon can be caught throughout the greater part of the year, while at Prospect, Langford, and Sooke Lakes are bass and trout. Shawnigan Lake twenty-one miles along the line of the E. & N. Railway, furnishes some good-sized trout which can be taken either by trolling or with the fly.

But some of the finest fishing is to be had at the famous Cowichan River, fifty miles from Victoria, on the E. & N. Railway and the Island Highway. The lower reaches of this river may be fished from Cowichan Bay, four or five miles higher up from Duncan, or the headwaters where it empties from the lake at Cowichan



Mount Arrowsmith

Lake. The river itself is over twenty miles in length from the lake to the sea, and has many good pools and splendid "reaches." An ideal way to fish it is to get an Indian guide to send a canoe up to the lake for you, and then come down the river in it. It is an excellent stream for steel-heads in the early spring, and after the first freshets the rainbow and cut-throats begin to run. There are also a few Dolly Vardens. At Cowichan Bay salmon run in the winter, spring and fall, but the best fishing is in the autumn when the cohoes come in. Cowichan Lake has some fine big trout, and occasionally, in the summer, spring salmon as well.

At the Nanaimo lakes, seventy-seven miles from Victoria, there are some large trout which can be caught with the fly and by trolling. Cameron Lake, on the way to Alberni, also repays fishing, while from Port Alberni itself, one hundred and thirty-one miles from Victoria by rail or highway Great Central and Sproat Lakes furnish splendid fishing waters. For fish of all kinds it is doubtful if there is any lake on the coast that is equal to the former, and from its foot one can fish both Stamp and Ash Rivers. Sproat Lake is smaller than Great Central Lake, but is almost equally good.

salmon can be caught during most months of the year. There is also excellent trout fishing, both for rainbow and cut-throats, but after the middle of July trout fishing is best some miles up the river.

Other excellent fishing waters are:—

For Salmon: Oak Bay and Shoal Bay (Victoria), Sooke Harbor, Sooke River, Deep Bay, Qualicum.

For Trout: Sooke River, Koksilah River, Chemainus River (upper reaches), Englishman's River, Qualicum River and Horne Lake, Courtenay River, Oyster River.



In the Strathcona Park Region

Campbell River ranks with Cowichan as a world-famous fishing water, and is the headquarters for the tyece salmon, which run from ten to sixty pounds. At any time during August and the first week or two in September the tyece are running. During June and July there are cohoes and small silver springs. Spring

AUTO SIGHT-SEEING TRIPS

The visitor to Victoria is particularly well provided for with an excellent service of well-organized trips incorporating local points of attraction, and trips to outlying points, conducted by reliable auto companies and

individuals. Those who wish to drive themselves can have their wish fulfilled, by the services of the Drive Yourself Auto Liveries, these establishments furnishing everything but the driver, with first-class equipment, consisting of Chandlers, Dodges, Hupmobiles, Overlands, Baby Grand Chevrolets and Fords, all self-starters. The reasonable charges suggest more extended drives to up-Island points.

CLIMATE

The all-year climate of Victoria is unexcelled—tempered by the ocean breezes and the great Kuro-Siwo, or Japan current, the mid-summer days are never hot and the nights delightfully cool, insuring complete rest. The winters are extremely mild. The rainfall is less than at any point on the Pacific Northwest Coast.



Mirrored Lakes With Mountain Settings

GOLF AND OTHER SPORTS

Golf can be played at Victoria every day in the year. The excellence and scenic charm of the Colwood, Oak Bay and Esquimalt courses is well-known to visiting golfers who have been fortunate enough to play them. Boating, canoeing, fishing, baseball, cricket, tennis and, in fact, all outdoor sports can be enjoyed at Victoria.

VICTORIA and the Island generally is blessed with the best water obtainable anywhere.

The comparative absence of flies and mosquitoes is an added attraction that goes with the delightful climate of Victoria

**ESQUIMALT AND NANAIMO RAILWAY
SERVICE TO UP-ISLAND POINTS**

Leaving Victoria morning and afternoon for Nanaimo and intermediate points.

Leaving Victoria morning for Pprt Alberni and Courtenay and intermediate points.

B.C. ELECTRIC RAILWAY (INTERURBAN)

Saanich Peninsula Service—For the Dominion Government Observatory, Brentwood and Butchart's Garden, Experimental Farm, Deep Bay, leave Victoria at convenient hours during the day.

It is an enjoyable trip through a delightfully diversified country of 23 miles from Victoria to Deep Bay.



**UNIVERSITY
OF VICTORIA
LIBRARY**



"Thro' Forests Gray With the Ages"

HOTELS

The general excellence of Victoria's Hotels is acknowledged to be unexcelled by hotels of any city of like size, and the rates are made to fit the pocket-books of all.

The same excellence and moderate charges apply generally to the Hotels at up-Island points, even though some are far removed from centres of population.

INFORMATION FOR THE MOTOR TOURIST



Charming Cameron Lake

The island wonderland of scenic beauty which cannot be surpassed anywhere for the exceptional excellence of its hundreds of miles of good roads, is becoming more popular each year with the motorist, and for the benefit of those who drive, a few brief suggestions will be found of value. An understanding of the requirements goes far towards saving of time and eliminating confusion. From Seattle the choice of two boat lines is offered in case the entry into Canada is to be made that way. In any event, the customs rules are the same, no matter by what port of entry Canada is reached.



Great Central Lake—Where the Trout Abound

The Canadian Pacific boat leaves Seattle for Victoria at 9:00 a.m., and the steamer "Sol Duc," of the Puget Sound Navigation Co., leaves at midnight. Reservations should be made in advance and the space claimed not later than thirty minutes before time of departure. In this connection, address Baggage Master B.C. Coast Service, Canadian Pacific Railway, Canadian Pacific Dock, Seattle, or Mr. C. V. La Farge, G.P.A., Puget



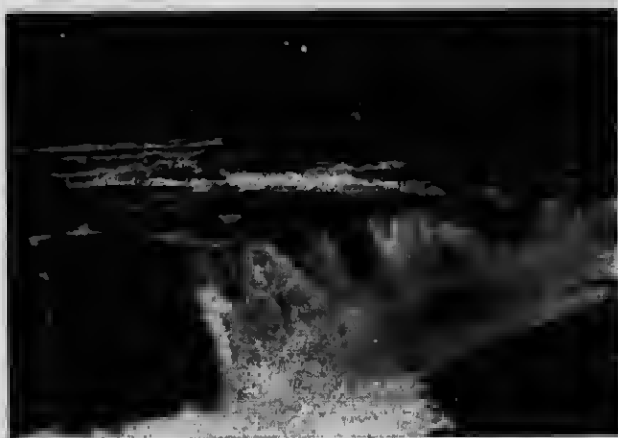
Sproat Lake—A Sportsman's Mecca

Sound Navigation Co., Colman Dock, Seattle, or if you ferry from Vancouver, B.C., address District Baggage Agent, C.F. Ry., Vancouver, B.C. Size of car and wheel base must be given when space is reserved, and the date of departure specified. The time of arrival on the pier should be so arranged that top and windshield can be lowered if necessary before the car is taken aboard. The owner or driver should be on hand to drive his own car aboard. Cars for Victoria are checked as excess baggage and nominal charges made

on them when the passengers travel on the same boat; otherwise straight freight charges are levied, and which are considerably higher.

Customs and immigration officers throughout the Dominion have established a reputation for courtesy to tourists and give all the aid in their power toward making tours there pleasant.

If it is desired to leave Canada through some other port of entry or by highway, the same papers used on entering will be required. On re-entering the United States the American immigration office will have to be visited in addition to the customs office. Automobiles and persons are subject to search in both countries, and tourists should not protest against it if the power is used because it is often necessary as protection against fraud and smuggling and will not be exercised except when necessary.



Stamp Falls, of the Stamp River

On Vancouver Island there are many spots of especial interest and beauty, and the tourist going there should plan a stay of some days or weeks.

CANADIAN AND UNITED STATES CUSTOMS REQUIREMENTS

In crossing from the United States into Canada, have all grips, tool boxes and side trunks unlocked. Do not carry any firearms unless on a hunting expedition. It will then be necessary to have a permit from the customs office.

Automobiles will not be permitted to cross the border if the driver cannot show the registration number of the car, also the maker's number.

It is suggested that the driver or chauffeur carry his chauffeur's license certificate. It is advisable for all persons to have some kind of credentials as identification.

If the automobile is to remain in Canada less than thirty days a touring permit is obtainable from the Canadian customs officer at the port of entry, allowing



Elk Falls, the Wonderful Cataract of the Campbell River

the car to be run in the Dominion for one month without securing a customs bond or depositing duty. If more than a thirty-day stay is planned in Canada, a customs bond valid for six months must be obtained, guaranteeing the re-exportation of the car within that period, and Canadian registration must be effected and licenses obtained. In order to bring the car back into the United States duty-free on the return journey it must be registered with the American customs office at the international border when leaving the United States, and a certificate of export obtained.



Off for the Fishing Grounds

CAMPING SITES

For the accommodation of automobile tourists the Provincial Government of B.C. has prepared a number of selected sites for those who wish to camp as they travel, and who carry their own camping equipment. These sites are located on the main highways, in close proximity to a good fresh water supply, and have been picked out with due consideration for their scenic charm.

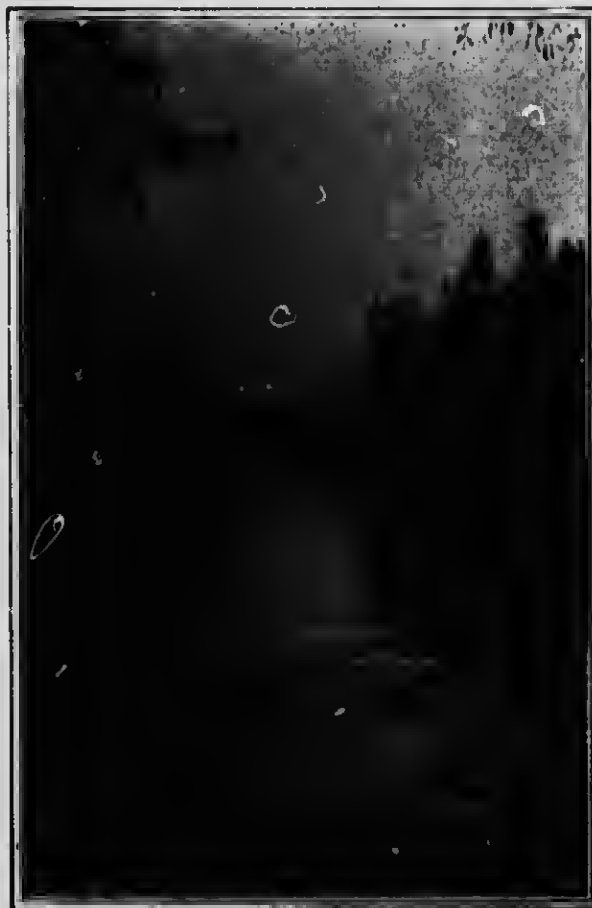
The exact location and distance from Victoria of these sites can be secured on application to the Free Information Bureau maintained by the Victoria and Island Development Association, ground floor of Belmont Building, Victoria.



Indians Poling Up the Cowichan River

MUNICIPAL CAMPING SITES

The City of Duncan has provided an excellent camping site within the bounds of the Agricultural Fair grounds close to the centre of the city, with shade trees, city water, cooking facilities and other conveniences.



Campbell River

A Famous Salmon and Trout Stream

The City of Nanaimo has provided a desirable camping site at Millstream Park two minutes by auto from the heart of the city, having a beautiful situation close to Millstream and Falls, well shaded by trees; with city water on the grounds and with cook stoves and other conveniences.

WARNING

As the camp locations provided by the Government are within or close to valuable timber areas, particular care should be exercised by the camper to see that any fires he is responsible for are kept from spreading, and that the same are thoroughly extinguished before leaving the ground.



"Streams Where the Trout Leap"

FISHING AND HUNTING LICENSES

For non-residents the angler's license is \$5.00, good for the season between March 25th and November 15th, and the license per day is \$1.00. For non-residents the general license to shoot is \$25.00 for the season.

TOURS OF THE ISLAND

A number of attractive combination rail and water trips from Seattle and Vancouver, B.C., through Victoria to up-Island points are provided by the Canadian Pacific Railway Steamship and Island Rail Service (the Esquimalt and Nanaimo Railway) at very reasonable rates, with liberal stop-over conditions, as follows:—

FROM SEATTLE

(Going or Returning via Victoria)

To "The Island of 1,000 Miles of Wonderland"

To	Route	Fare
VICTORIA and Return	Direct steamer	\$ 5.40
VANCOUVER and Return	Going via Victoria or direct steamer and return same or reverse of going route.....	9.90
VANCOUVER and Return	Same as above but routed via Gulf Islands instead of direct steamer between Victoria and Vancouver..	10.25



In the Early Morning the Fish Are Caught

SHAWNIGAN and Return	Going via Victoria and E. & N. Ry. Return same.....	7.40
DUNCAN and Return	Going via Victoria and E. & N. Ry. Return same.....	8.20
LAKE COWICHAN and Return	Going via Victoria and E. & N. Ry. Return same.....	9.70
NANAIMO and Return (Circuit Tour)	Going via Victoria and E. & N. Ry. Return via Vancouver or reverse	10.70
QUALICUM BEACH and Return	Going via Victoria and E. & N. Ry. Return same.....	12.80
QUALICUM BEACH and Return	Going same. Return via Vancouver	12.75
QUALICUM BEACH and Return	Going via Vancouver and reverse of above	12.75
COURTENAY and Return	Going via Victoria and E. & N. Ry. Return same	15.50
COURTENAY and Return	Going via Victoria and E. & N. Ry. Return via Vancouver.....	15.55

PORT ALBERNI and Return	Going via direct steamer to Victoria, West Coast steamer in Port Alberni, E. & N. Ry. to Victoria and direct steamer to Seattle.....	15.75
PORT ALBERNI and Return	Going via Victoria and E. & N. Ry. Return same.....	15.05
PORT ALBERNI and Return	Going via Victoria and E. & N. Ry. Return via Nanaimo and Vancouver	15.10
CAMPBELL RIVER and Return	Going via Victoria and E. & N. Ry. to Port Alberni, E. & N. Port Alberni to Nanaimo, steamer to Vancouver, steamer Vancouver to Campbell River and return to Seattle (berth and meals not included on steamer)	25.25
CAMPBELL RIVER and Return	Going via Vancouver and reverse of above	25.25
COMOX and Return	Going via steamer via Vancouver, returning by steamer to Nanaimo, E. & N. to Victoria and steamer to Seattle	15.25
PORT ALICE and Return	Going via Victoria and direct steamer (West Coast Route). Return same. (Fare includes meals and berth from Victoria while en route but not while steamer remains at Port Alice)	40.90

TOURS FROM VANCOUVER CITY

To "The Island of 1,000 Miles of Wonderland"

To	Route	Fare
VICTORIA and Return (Circuit Tour)	Going via Nanaimo and E. & N. Ry. and return direct or reverse...	6.05
SHAWNIGAN and Return	Going via Victoria and E. & N. Ry. Return same.....	6.95
DUNCAN and Return	Going via Victoria and E. & N. Ry. Return same.....	7.85
PORT ALBERNI and Return	Going via steamer to Victoria West Coast steamer to Port Alberni, E. & N. Ry. to Victoria, and direct steamer to Vancouver (berth and meals not included)...	10.75
PORT ALICE and Return	Going via Victoria and direct steamer (West Coast Route). Return same. (Fare includes meals and berth from Victoria while en route, but not while steamer remains at Port Alice)	40.45

AUTOMOBILE FERRY CHARGES (as Baggage)

	Between	Cars Under 2,000 Lbs.	Between 2,000 and 4,000 Lbs.	Over 4,000 Lbs.
Seattle and Victoria.....	\$5.00*	\$7.00*	\$9.00*	
Port Angeles and Victoria	5.00*	7.00*	9.00*	
Nanaimo and Vancouver..	5.00	6.50	7.50	

*U.S. War Tax not included—No War Tax in Canada.

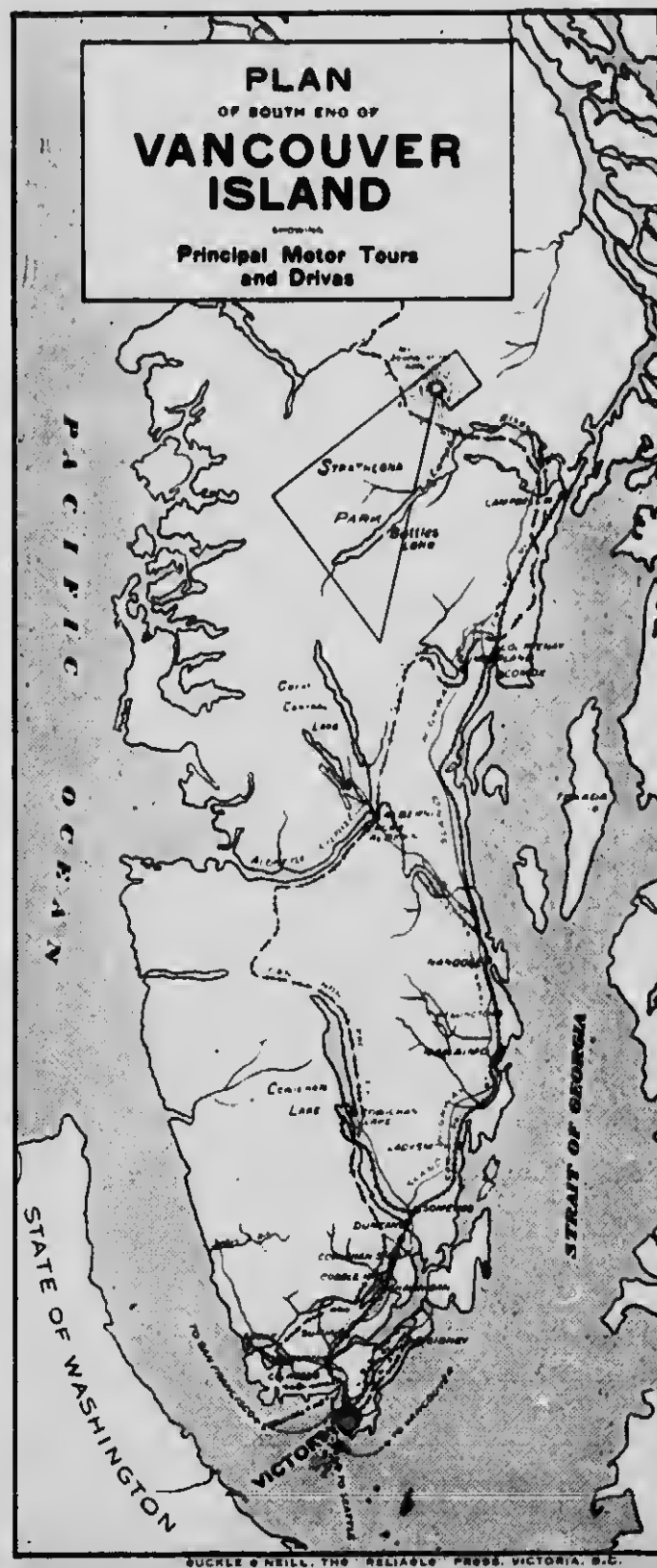
ISSUED BY

THE VICTORIA & ISLAND DEVELOPMENT ASSOCIATION

For Any Further Information Address

PUBLICITY COMMISSIONER

Belmont Building - - - - - Victoria, B.C.



VICTORIA

*Gateway to the
"Island of 1,000 Miles
of Wonderland"*



